





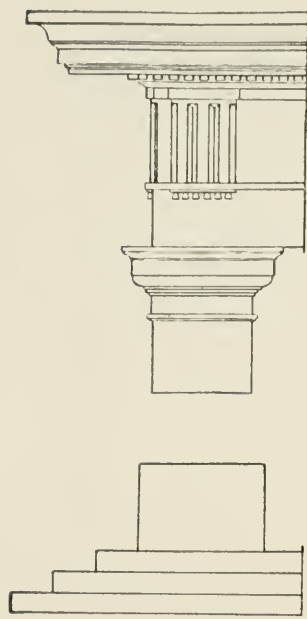
UNIVERSITY PRINTS, BOSTON

PRAYING HANDS: DRAWING  
ALBERTINA, VIENNA

DÜRER. 1471—1528  
GERMAN SCHOOL



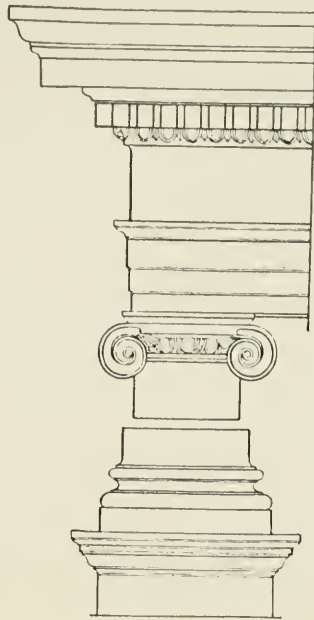
BAMBINO (Faience Medallion)  
*Innocenti, Florence*



UNIVERSITY PRINTS, BOSTON

DORIC

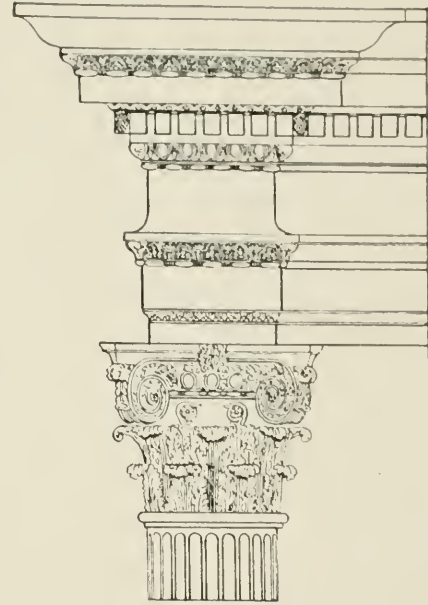
THE ROMAN ORDERS



IONIC



CORINTHIAN



COMPOSITE



PRESENTATION IN THE TEMPLE

*Mauritshuis, The Hague*

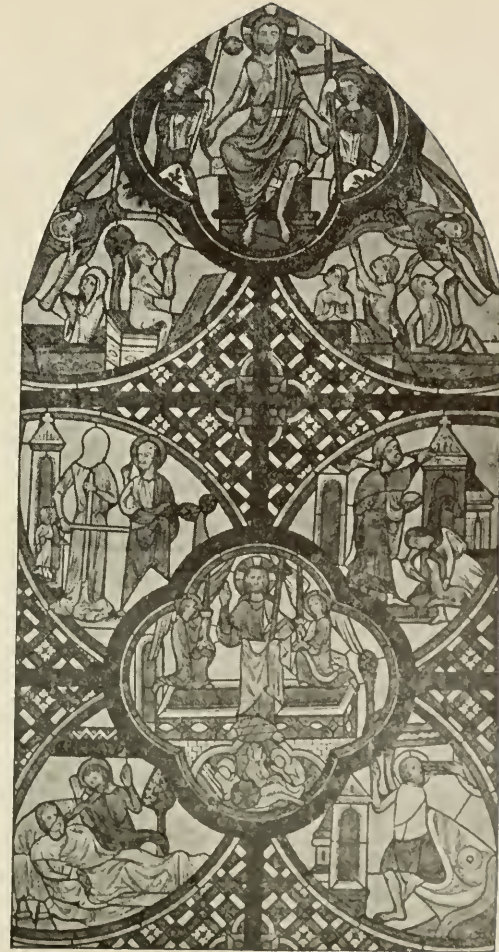


UNIVERSITY PRINTS, BOSTON

**GRIEF (ADAMS MEMORIAL)**

ROCK CREEK CEMETERY, WASHINGTON, D. C.

ST. GAUDENS. 1848—1907



PASSION WINDOW  
*Cathedral, Le Mans*

THE UNIVERSITY PRINTS  
BOSTON

FRENCH GOTHIC  
XIII CENT.



MADONNA AND CHILD WITH DONORS  
*Chartreuse of Champmol, Dijon*

THE UNIVERSITY PRINTS  
BOSTON

JEAN DE MARVILLE AND CLAUX SLUTER  
BURGUNDIAN SCHOOL  
END OF XIV CENT.





e uentre matris mee uocauit me dñs  
 nomine meo. et posuit os meū sicut  
 gladium acutum sub tegumento  
 manus sue protexit me posuit me



BIRTH OF JOHN THE BAPTIST; BAPTISM  
*Trivulzio Library, Milan*



THE MOSES WELL  
*Chartreuse of Champmol, Dijon*

THE UNIVERSITY PRINTS  
BOSTON

CLAUX SLUTER  
BURGUNDIAN SCHOOL  
END OF XIV CENT.



THE SYNAGOGUE  
*Cathedral, Strassburg*

THE UNIVERSITY PRINTS  
BOSTON

GERMAN GOTHIC  
END OF XIII CENT.



Photo: Marburg

THE CHURCH  
*Cathedral, Strassburg*



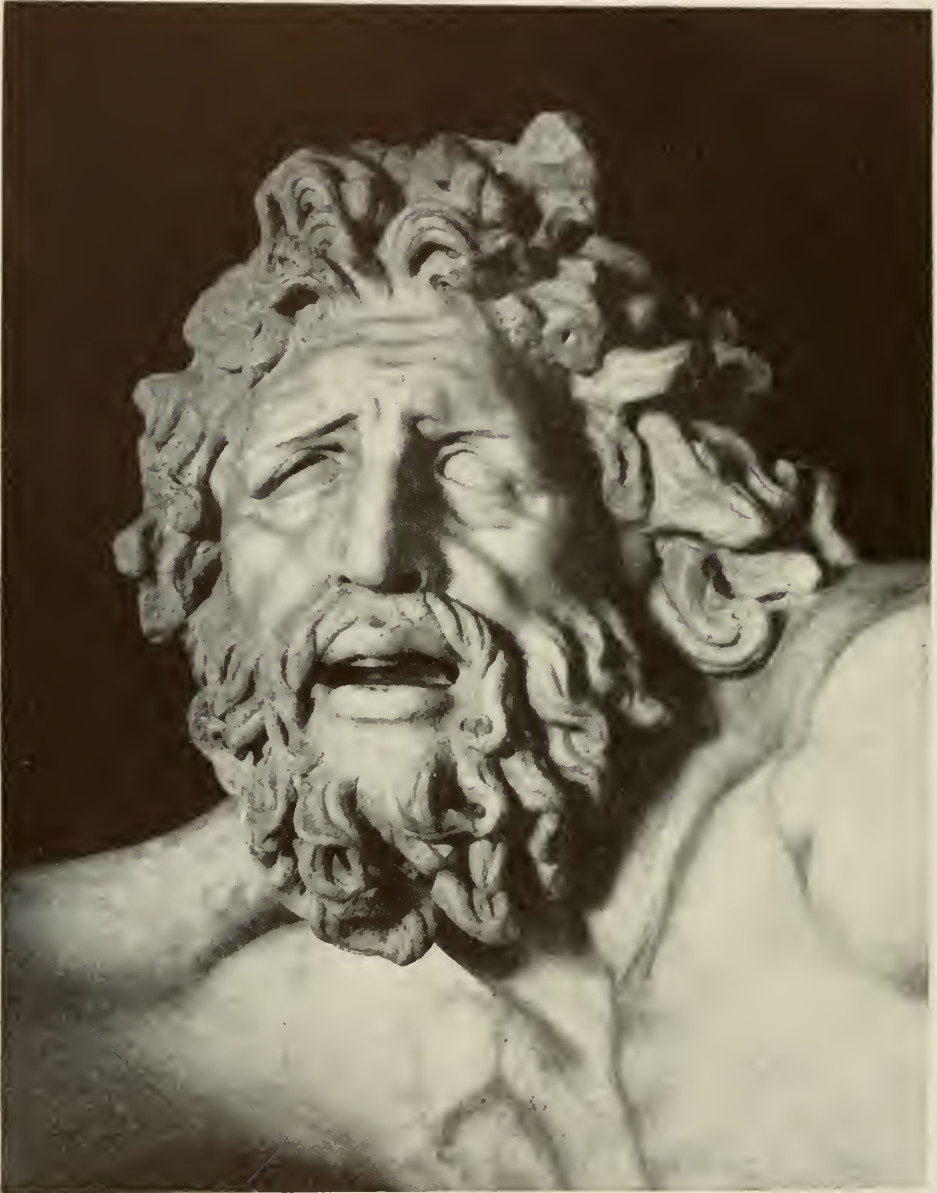
IKHNATON WORSHIPPING THE SUN  
*Museum, Cairo*



OFFERING INCENSE AND LIBATION: BOOK OF THE DEAD  
*Museum, Cairo*



GRAVE RELIEF OF HEGESO  
*National Museum, Athens*



LAOKOÖN

(Head set straight for purposes of comparison)

*Vatican, Rome*

THE UNIVERSITY PRINTS  
BOSTON





Photo. Giraudon.

**THE VIRGIN OF THE ROCKS**  
*Louvre, Paris*

**THE UNIVERSITY PRINTS**  
**BOSTON**

**LEONARDO DA VINCI. 1452—1519**



ASSUMPTION OF THE VIRGIN  
*Frari, Venice*



ST. FRANCIS PREACHING TO THE BIRDS  
*Upper Church, S. Francesco, Assisi*

THE UNIVERSITY PRINTS  
BOSTON

GIOTTO. 1266?—1336  
FLORENTINE SCHOOL



UNIVERSITY PRINTS, BOSTON

ASSUMPTION OF THE VIRGIN

THE ART INSTITUTE OF CHICAGO

EL GRECO. 1548?—1625

SPANISH





UNIVERSITY PRINTS, BOSTON

HERMES OF PRAXITELES  
MUSEUM, OLYMPIA





UNIVERSITY PRINTS, BOSTON

HERCULES FARNESE  
MUSEUM, NAPLES







UNIVERSITY PRINTS, BOSTON

LAOKOÖN  
VATICAN, ROME





Photo. Giraudon.

NIKE OF SAMOTHRACE  
*Louvre, Paris*





TYMPANUM OF PORTAL

*Church, Moissac*

THE UNIVERSITY PRINTS  
BOSTON

FRENCH ROMANESQUE  
SCHOOL OF LANGUEDOC  
FIRST HALF, XII CENT.





UNIVERSITY PRINTS, BOSTON

APOSTLES. PORTAL OF BEAU DIEU. CATHEDRAL. AMIENS  
FRENCH GOTHIC. FIRST HALF OF XIII CENT.







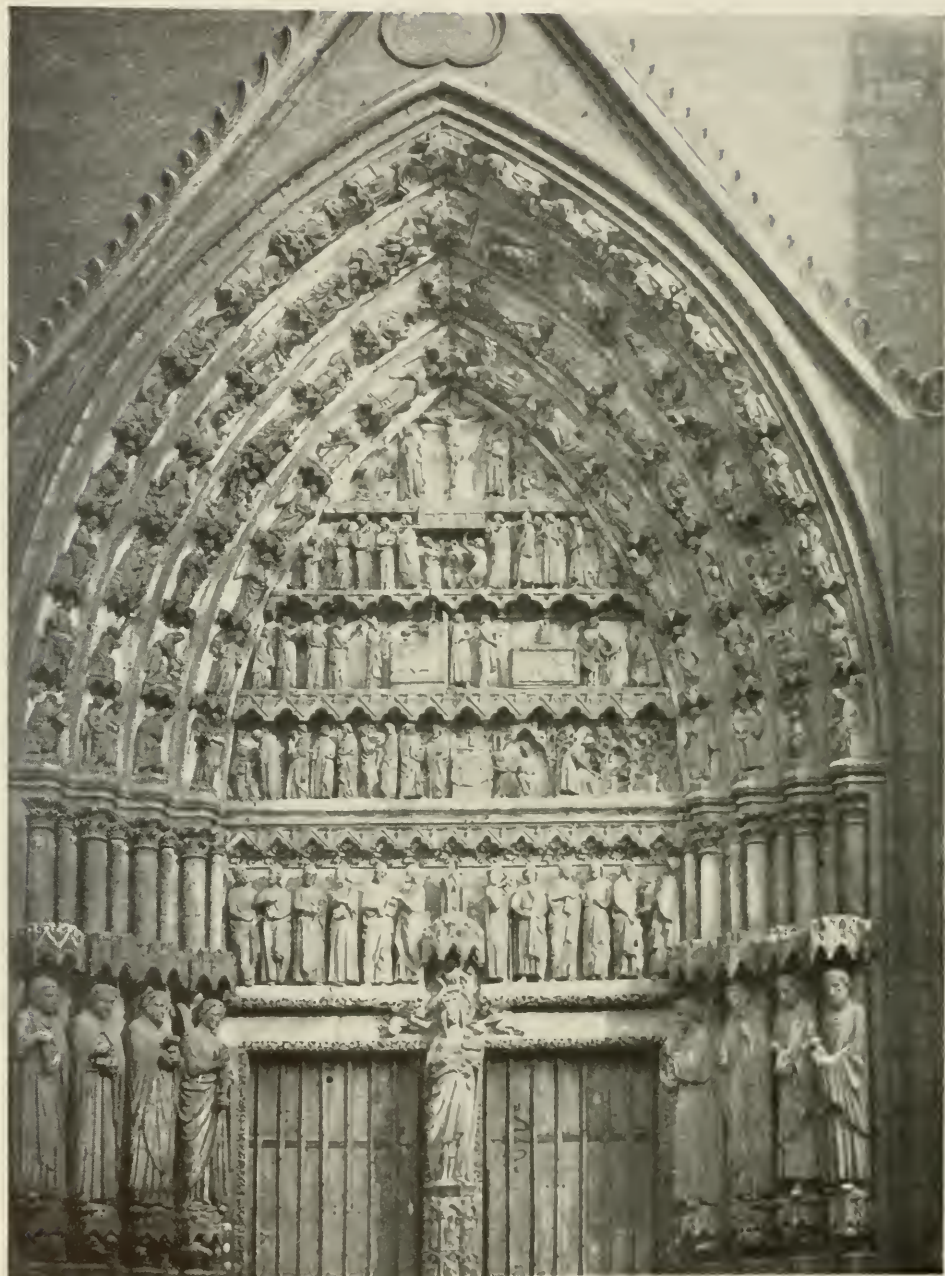
CHRIST (BEAU DIEU)

*Façade, Cathedral, Amiens*



ST. FIRMIN





UNIVERSITY PRINTS, BOSTON

PORTAL OF VIERGE DORÉE. CATHEDRAL AMIENS  
FRENCH GOTHIC. SECOND HALF OF XIII CENT.





TYPES OF CHRIST (IN STYLE OF CHARTRES)  
*West Front, Cathedral, Reims*

THE UNIVERSITY PRINTS  
BOSTON

FRENCH GOTHIC  
FIRST HALF, XIII CENT.





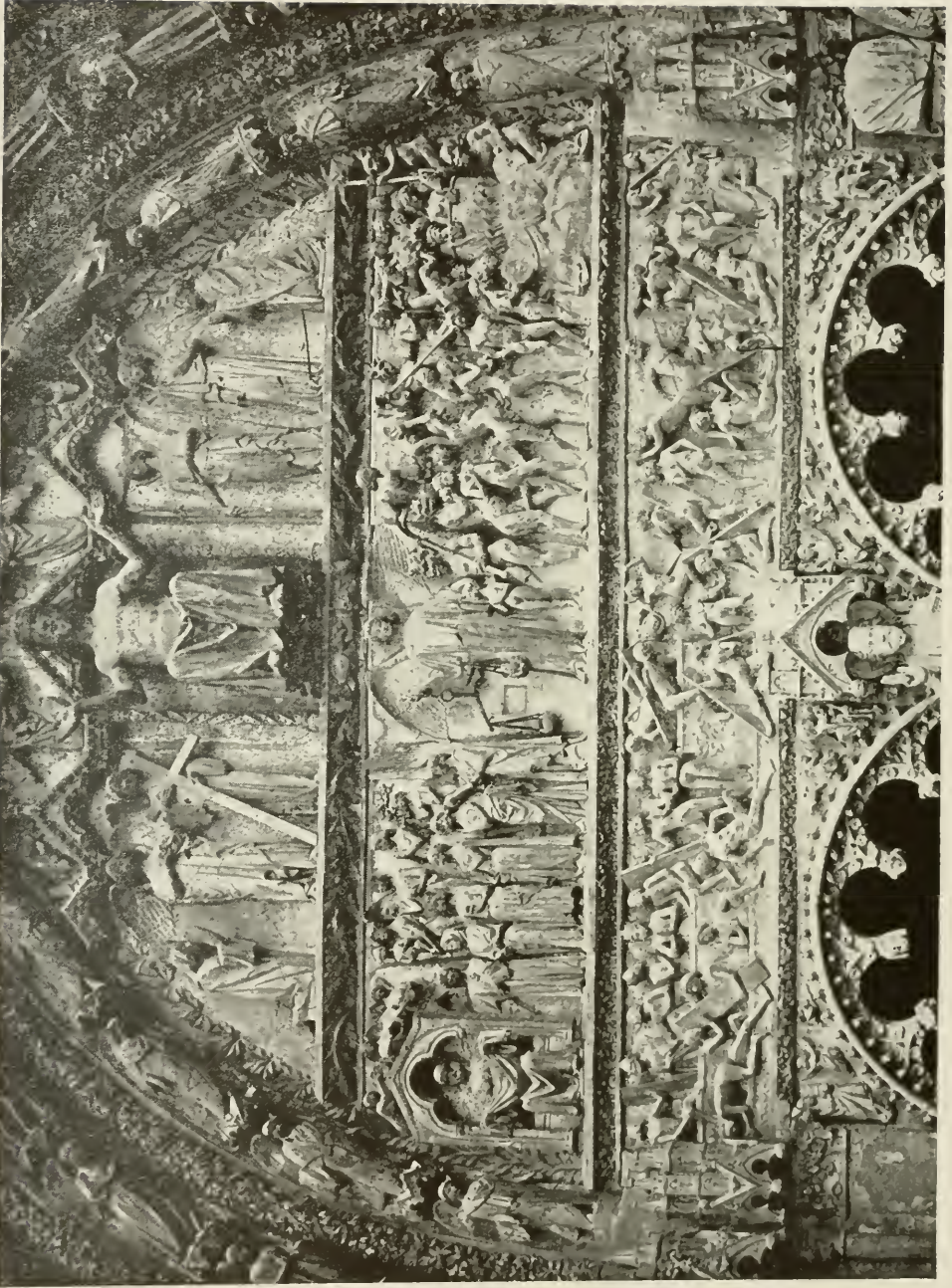
PORTAL OF LAST JUDGMENT  
*North Transept, Cathedral, Reims*

THE UNIVERSITY PRINTS  
BOSTON

FRENCH GOTHIC  
FIRST HALF, XIII CENT.







TYMPANUM OF LAST JUDGMENT  
*Façade, Cathedral, Bourges*









SECTION FROM JOSHUA ROLL — ANGEL APPEARING TO JOSHUA  
*Vatican Library, Rome*



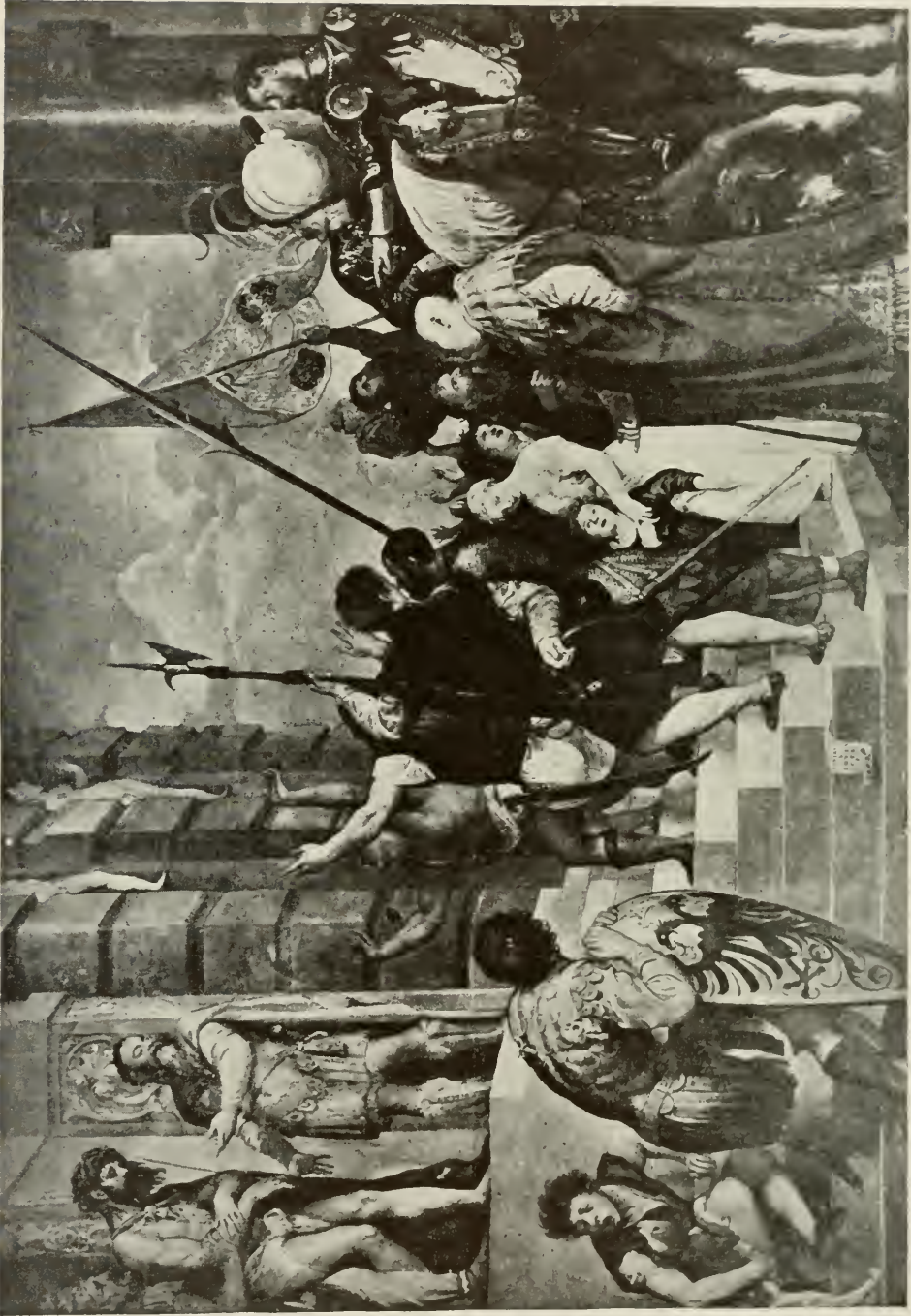


UNIVERSITY PRINTS, BOSTON

TEMPTATION AND EXPULSION FROM EDEN  
CEILING, SISTINE CHAPEL, VATICAN, ROME  
MICHELANGELO. 1475—1564







THE GREAT ECCE HOMO  
*Imperial Gallery, Vienna*

THE UNIVERSITY PRINTS  
BOSTON

TITIAN. 1477—1576  
VENETIAN SCHOOL





MADONNA OF THE PESARO FAMILY  
*Frui, Venice*





UNIVERSITY PRINTS, BOSTON

MOSES (DETAIL, TOMB OF POPE JULIUS II)

S. PIETRO IN VINCOLI, ROME

MICHELANGELO. 1475—1564





MADONNA DELLA SEDIA  
*Pitti, Florence*







SISTINE MADONNA  
*Gallery, Dresden*





CHRIST AT EMMAUS  
*Louvre, Paris*

THE UNIVERSITY PRINTS  
BOSTON

REMBRANDT VAN RIJN. 1606—1669  
DUTCH SCHOOL





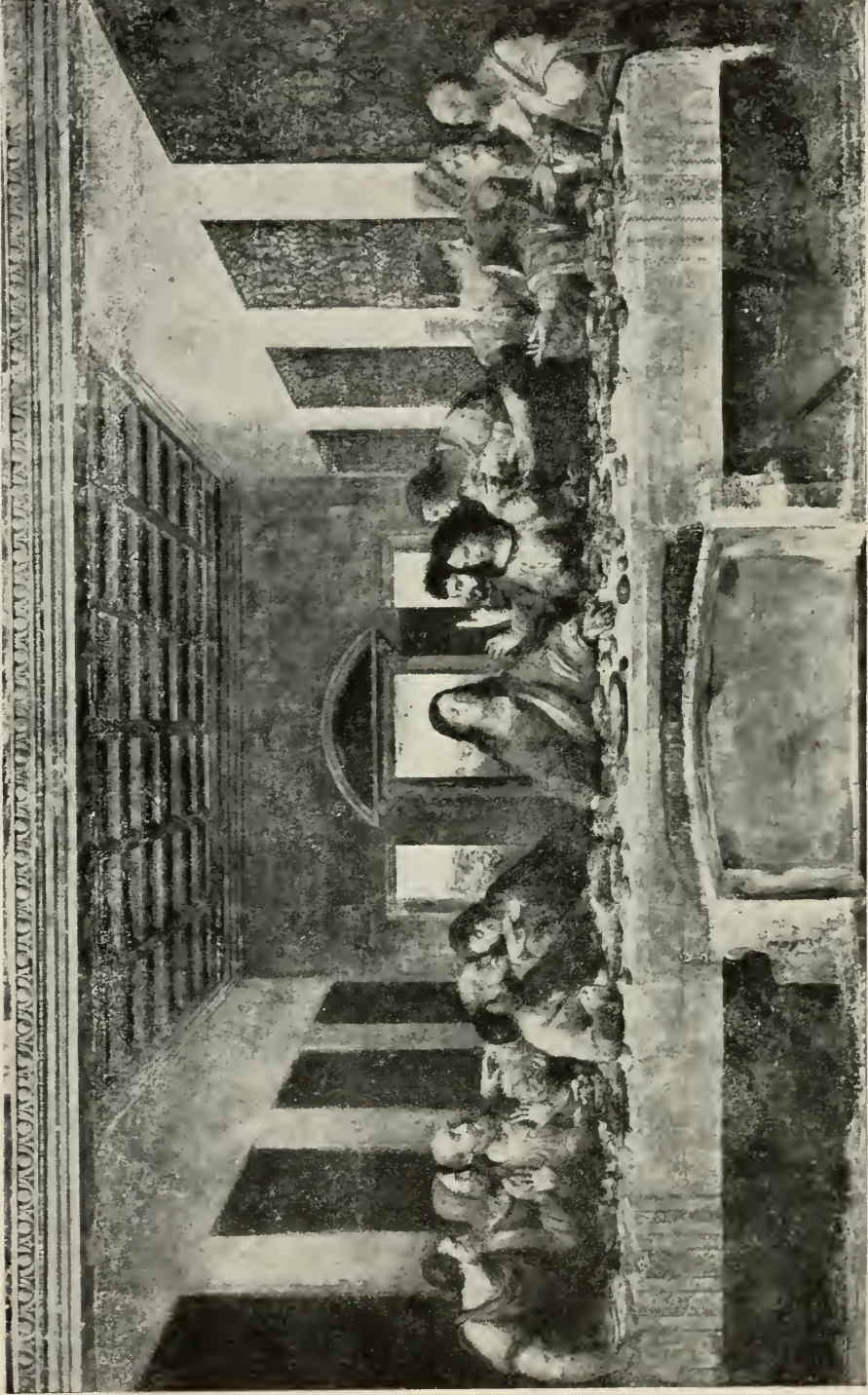
UNIVERSITY PRINTS, BOSTON

THE CREATION OF MAN

CEILING, SISTINE CHAPEL, VATICAN, ROME

MICHELANGELO. 1475—1564





UNIVERSITY PRINTS, BOSTON

LAST SUPPER  
REFECTORY. S. M. DELLE GRAZIE, MILAN  
LEONARDO DA VINCI. 1452—1519

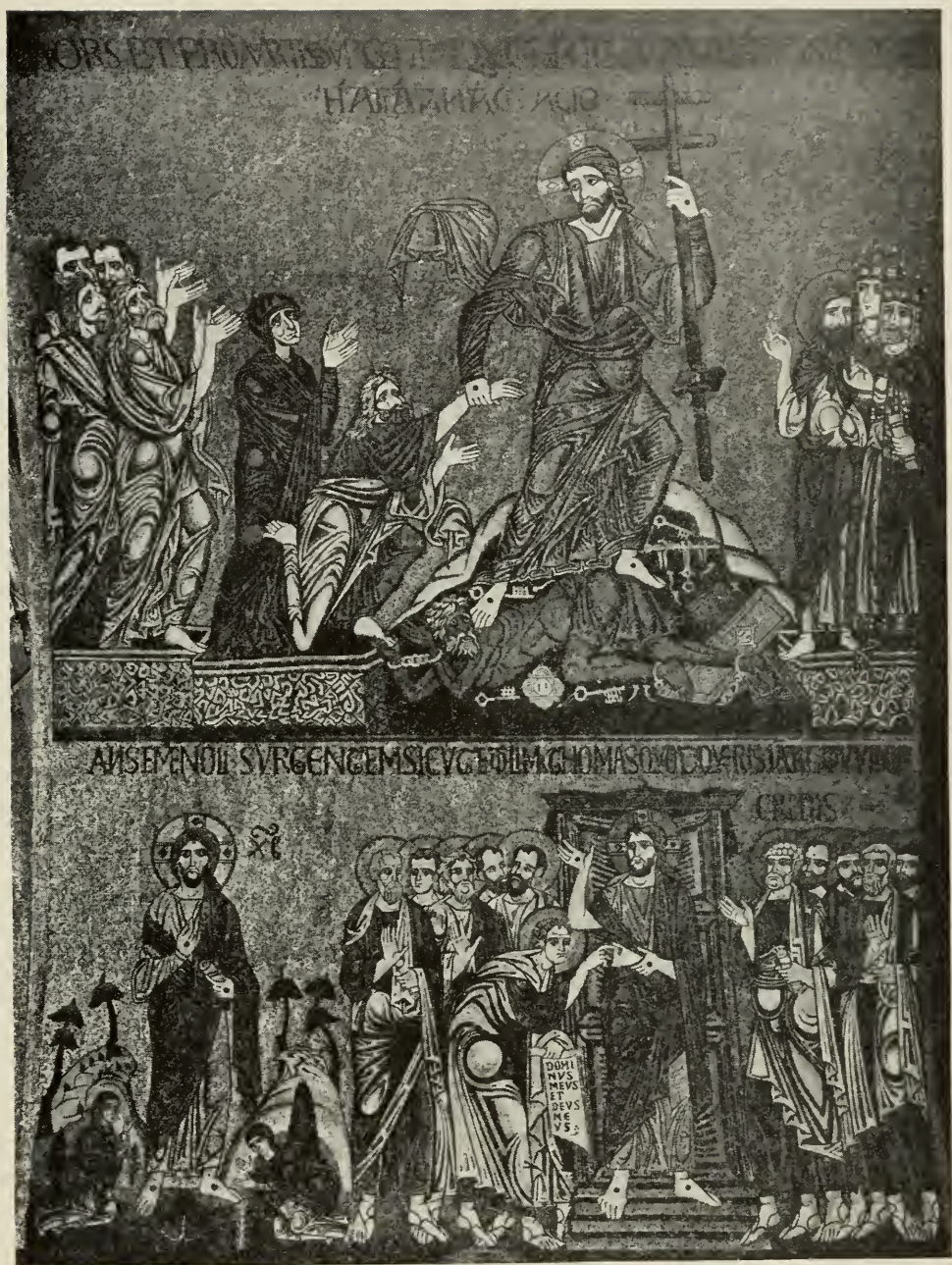






THE LIGHT OF THE WORLD  
*Keble College, Oxford*





SCENES FROM LIFE OF CHRIST  
*S. Marco, Venice*

THE UNIVERSITY PRINTS  
BOSTON

MOSAIC. BYZANTINE  
CA. 1100



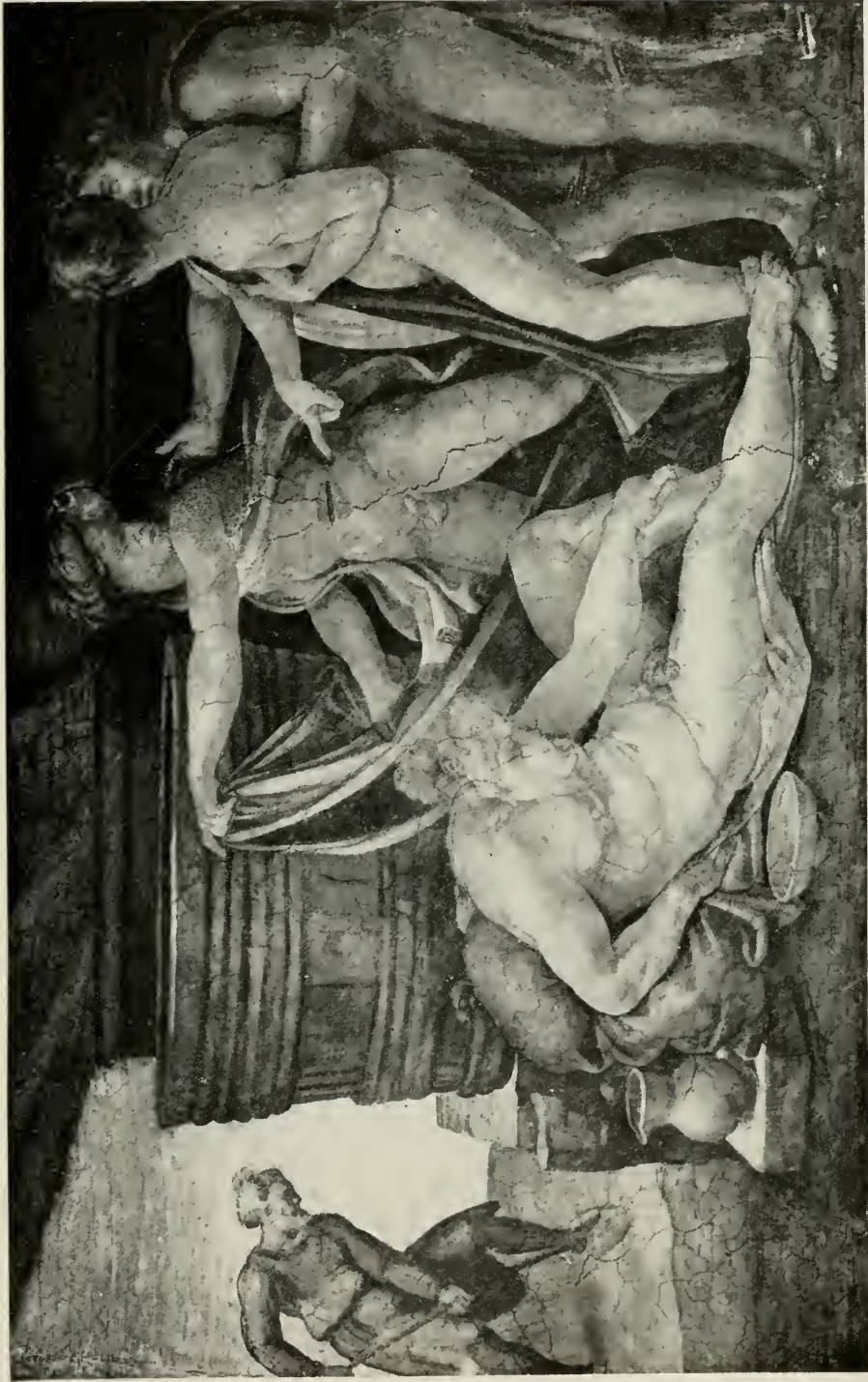


VIRGIN AND DONOR  
*Louvre, Paris*

THE UNIVERSITY PRINTS  
BOSTON

JAN VAN EYCK. C. 1382—1440  
EARLY SCHOOL OF THE NETHERLANDS





THE DRUNKENNESS OF NOAH  
*Ceiling, Sistine Chapel, Vatican, Rome*

THE UNIVERSITY PRINTS  
BOSTON

MICHELANGELO. 1475—1564







UNIVERSITY PRINTS, BOSTON

SEPARATION OF LIGHT AND DARKNESS

CEILING, SISTINE CHAPEL, VATICAN, ROME

MICHELANGELO. 1475—1564





THE LAST JUDGMENT

*East Wall, Sistine Chapel, Vatican, Rome*

THE UNIVERSITY PRINTS  
BOSTON

MICHELANGELO. 1475—1564





MADONNA ENTHRONED, WITH SAINT AND ANGELS  
*Uffizi, Florence*





THE ANNUNCIATION  
*Tate Gallery, London*







THE ANNUNCIATION  
*Prado, Madrid*

THE UNIVERSITY PRINTS  
BOSTON

PETRUS CRISTUS. c. 1400—1473?  
EARLY SCHOOL OF THE NETHERLANDS





ALTAR OF CHARLES V: Triptych  
*Kaiser Friedrich Museum, Berlin*

ROGER VAN DER WEYDEN. 1400—1464  
EARLY SCHOOL OF THE NETHERLANDS

THE UNIVERSITY PRINTS  
BOSTON





UNIVERSITY PRINTS, BOSTON

THE ANNUNCIATION  
CHAPEL OF THE ARENA, PADUA  
GIOTTO. 1266?—1336  
FLORENTINE SCHOOL





DETAILS FROM WALL DECORATIONS OF THE CATACOMBS

THIRD CENTURY?

THE UNIVERSITY PRINTS  
BOSTON







IN COEMETERIO CALLISTI

UNIVERSITY PRINTS, BOSTON

DETAILS FROM WALL DECORATIONS OF THE CATACOMBS  
THIRD CENTURY?



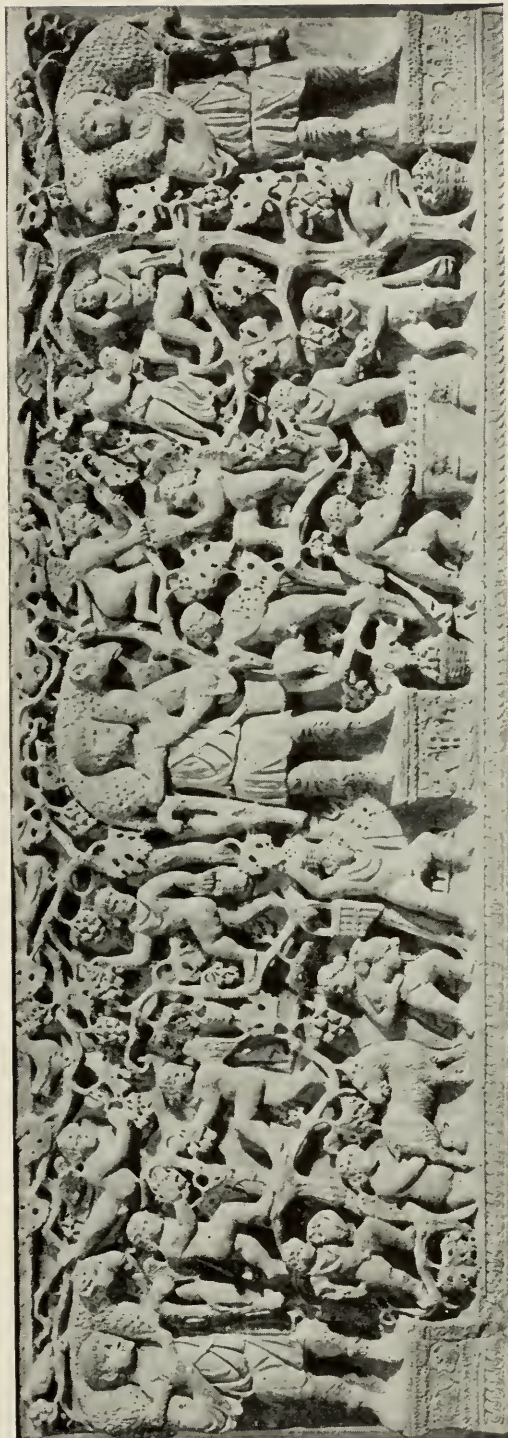


CHRISTIAN SARCOPHAGUS (Story of Jonah)  
*Lateran Museum, Rome*

THE UNIVERSITY PRINTS  
BOSTON

FOURTH CENTURY?





CHRISTIAN SARCOPHAGUS (Good Shepherds and Vintage Scenes)

*Lateran Museum, Rome*

THIRD CENTURY ?

THE UNIVERSITY PRINTS  
BOSTON





**ST. LONGINUS**  
*St. Peter's, Rome*







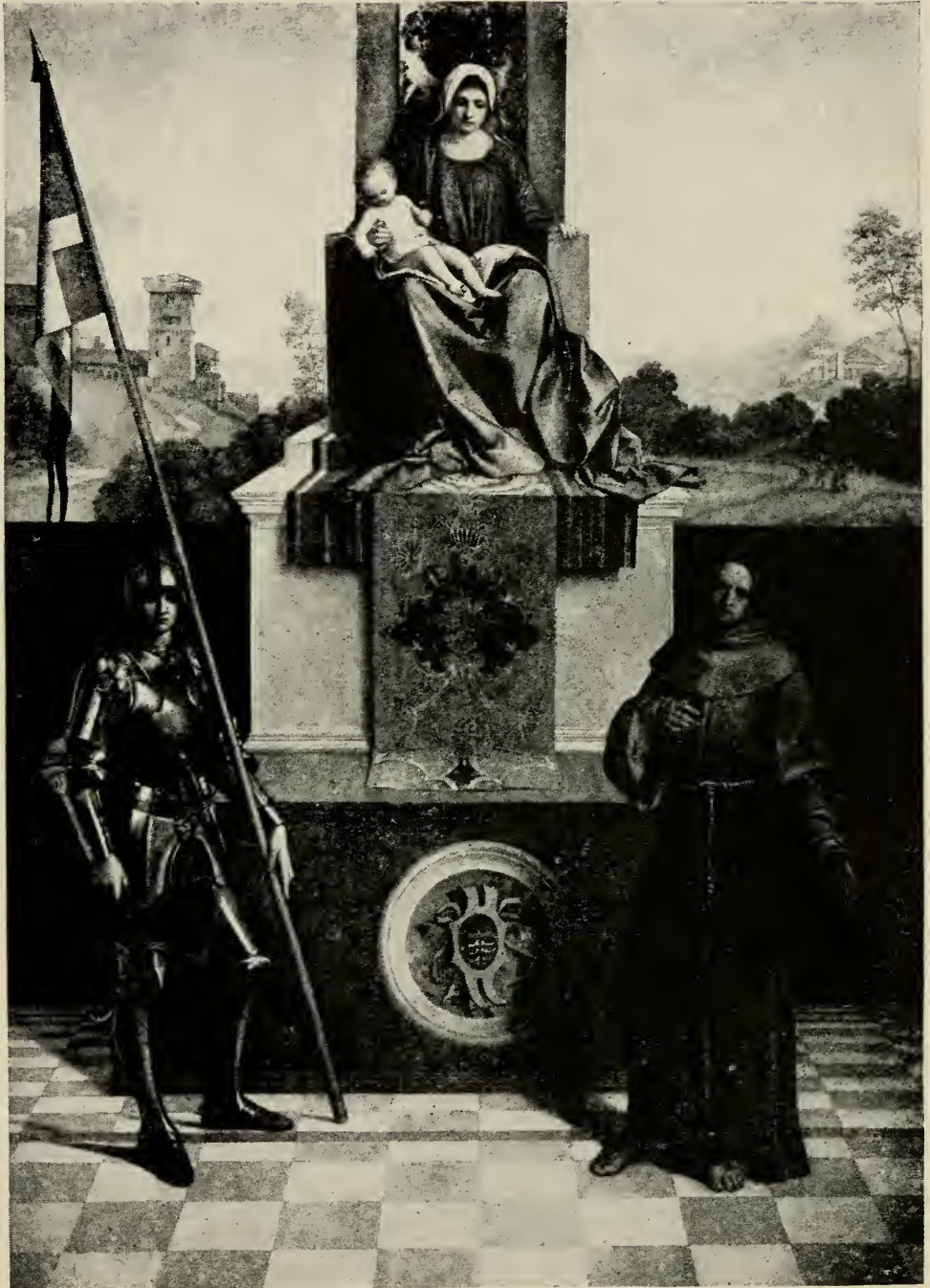
UNIVERSITY PRINTS, BOSTON

THE PRESENTATION OF THE VIRGIN

MADONNA DELL' ORTO, VENICE

TINTORETTO. 1518—1594





UNIVERSITY PRINTS, BOSTON

MADONNA WITH SS. LIBERALE AND FRANCIS  
CATHEDRAL, CASTELFRANCO

GIORGIONE. 1477—1511  
VENETIAN SCHOOL





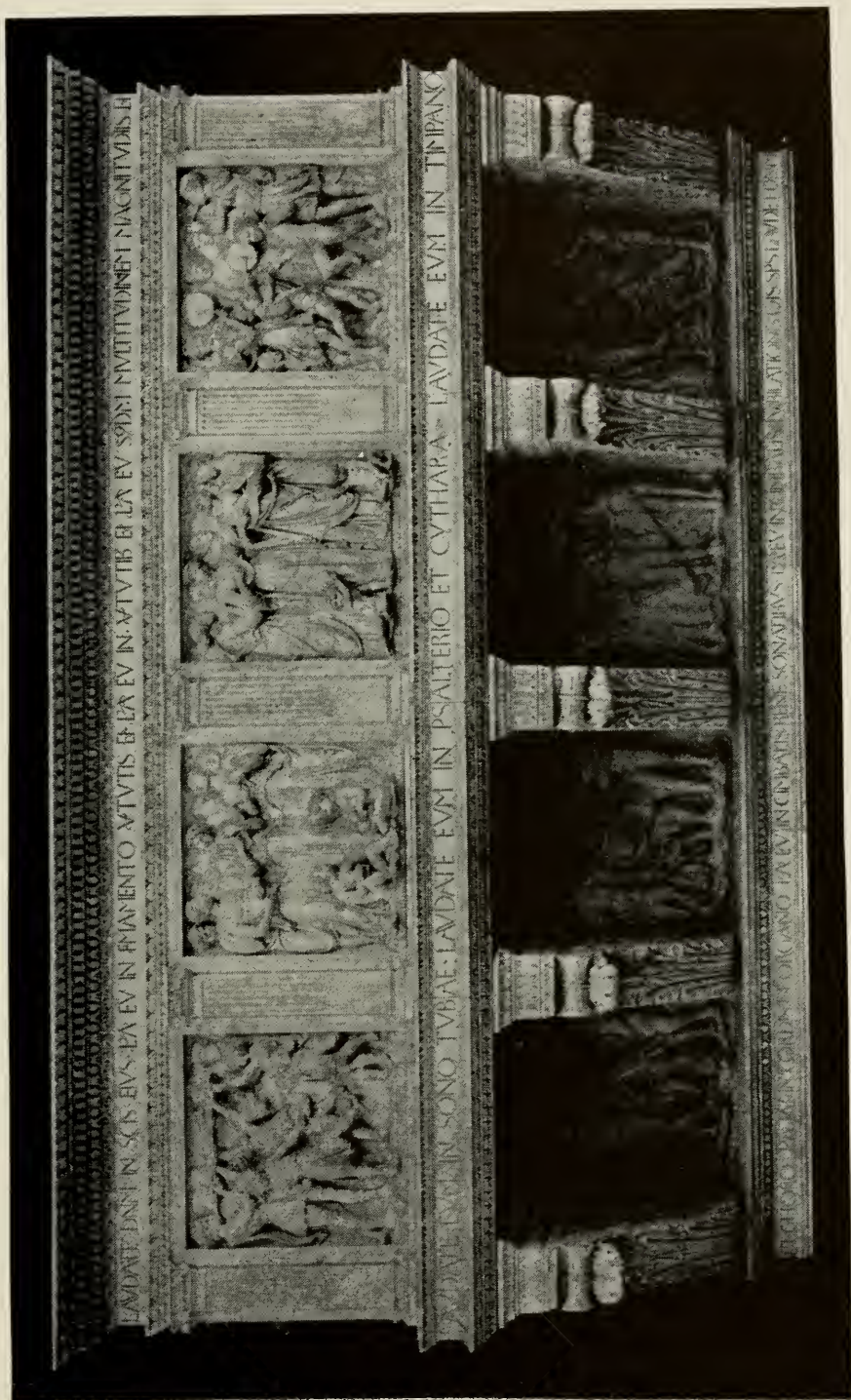
UNIVERSITY PRINTS, BOSTON

THE STORY OF ADAM AND EVE (FIRST PANEL)

EAST DOORS. BAPTISTERY, FLORENCE

GHIBERTI. 1378—1455





UNIVERSITY PRINTS, BOSTON

SINGING GALLERY  
CATHEDRAL MUSEUM, FLORENCE

LUCA DELLA ROBBIA. 1399—1482







EAST DOORS  
*Baptistery, Florence*





UNIVERSITY PRINTS, BOSTON

A PROPHET, CHURCH, SOUILLAC  
FRENCH ROMANESQUE (LANGUEDOC)  
FIRST HALF OF XII CENT.





UNIVERSITY PRINTS, BOSTON

BAYEUX TAPESTRY. VISION OF THE COMET  
MUSEUM, BAYEUX  
END OF XI CENT.





IN QUANTIS INCEDO  
DUM ADHUC ME INIMICUS

IUCENTUTIAM

IARE JULIUS MEIUSMS

F356

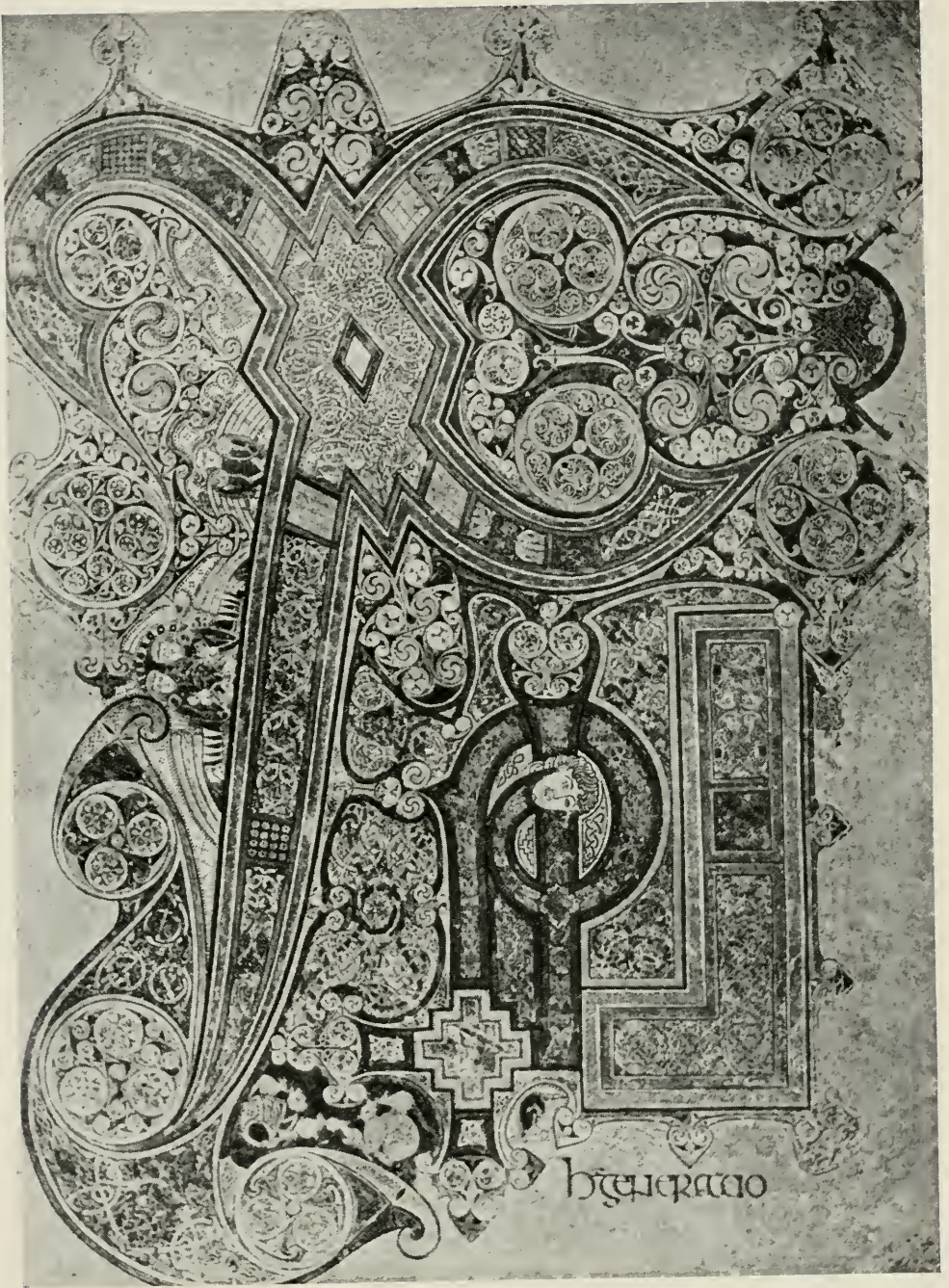
PAGE FROM UTRECHT PSALTER  
*University Library, Utrecht*

THE UNIVERSITY PRINTS  
BOSTON

MANUSCRIPT, CAROLINGIAN  
FIRST HALF, IX CENT.







INITIAL PAGE OF MATTHEW, BOOK OF KELLS  
*University Library, Dublin*

THE UNIVERSITY PRINTS  
BOSTON

MANUSCRIPT. CELTIC  
VIII-IX CENT.



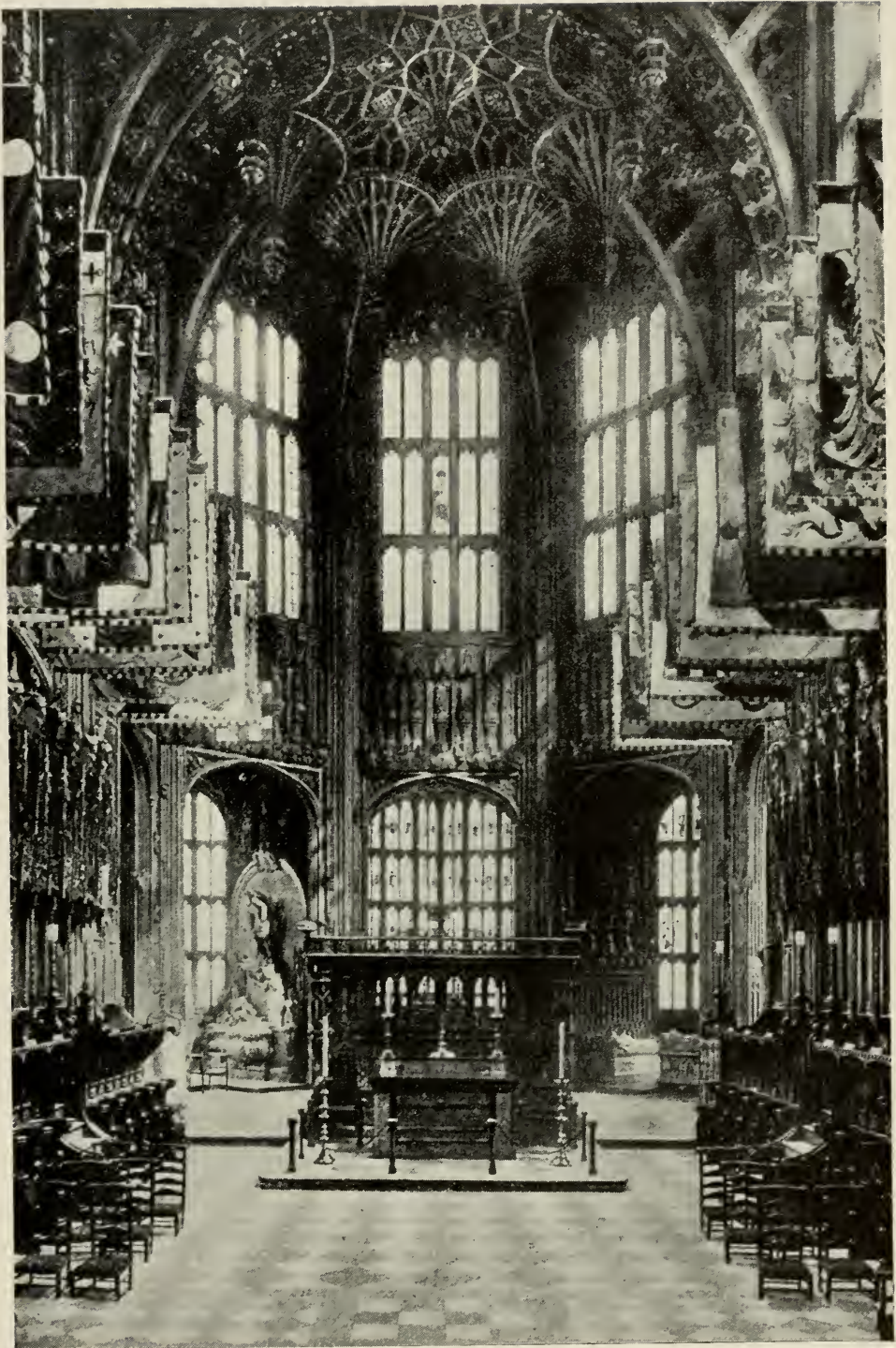


WEST END  
*St. Paul's, London*

THE UNIVERSITY PRINTS  
BOSTON

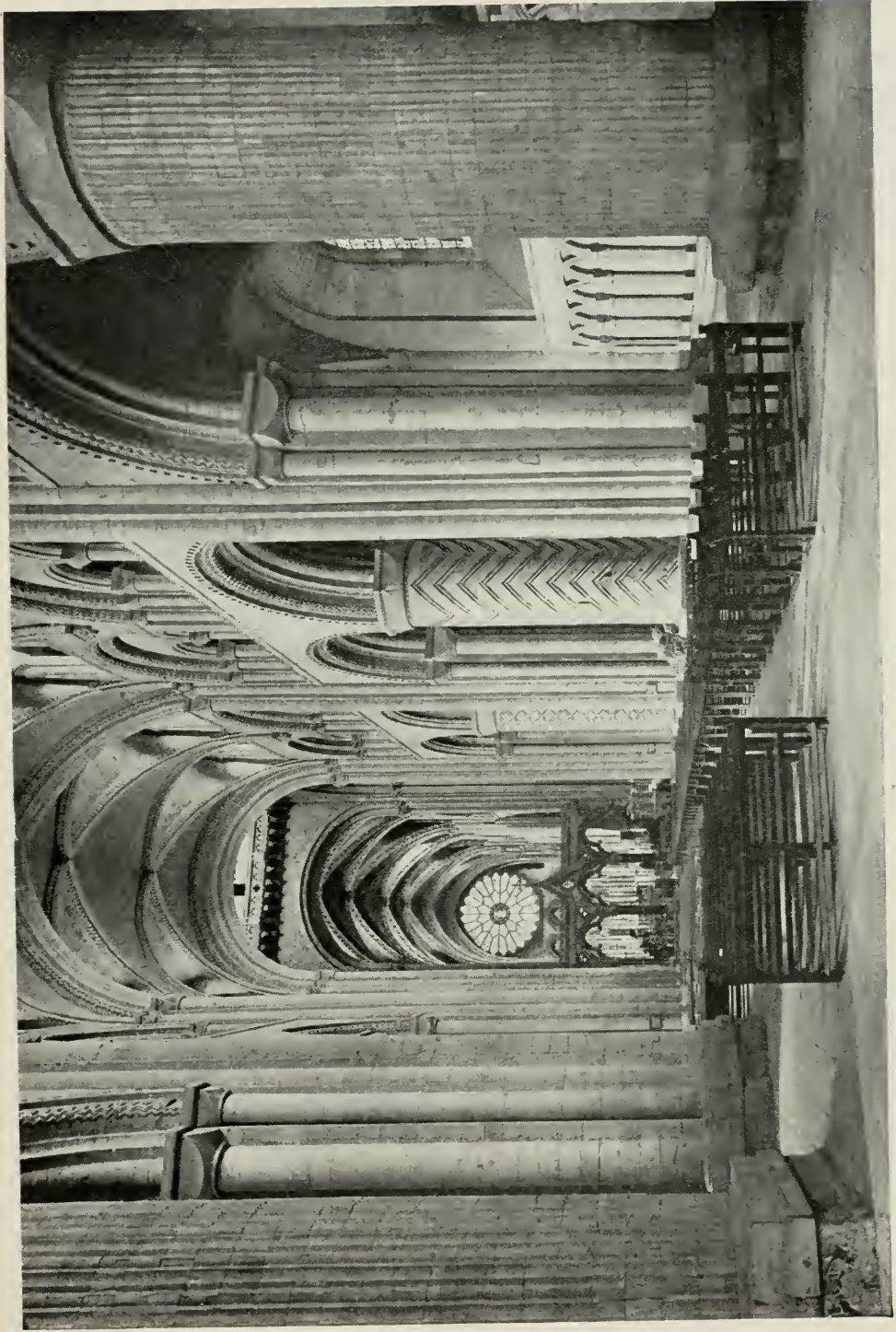
RENAISSANCE. 1675—1710  
ARCHITECT, SIR CHRISTOPHER WREN





INTERIOR OF HENRY VII'S CHAPEL  
*Westminster Abbey, London*





UNIVERSITY PRINTS, BOSTON

NAVE, LOOKING EAST. CATHEDRAL, DURHAM  
ROMANESQUE (NORMAN). BEGUN 1093. VAULTED BY 1133. LATER MODIFIED







MADONNA ENTHRONED, WITH FOUR SAINTS  
*S. Zaccaria, Venice*





NAVE, LOOKING EAST  
*Church, Vignory*





WEST END  
*Cathedral, Reims*





SAINTE-CHAPELLE  
*Paris*

THE UNIVERSITY PRINTS  
BOSTON

GOTHIC  
XIII CENT.



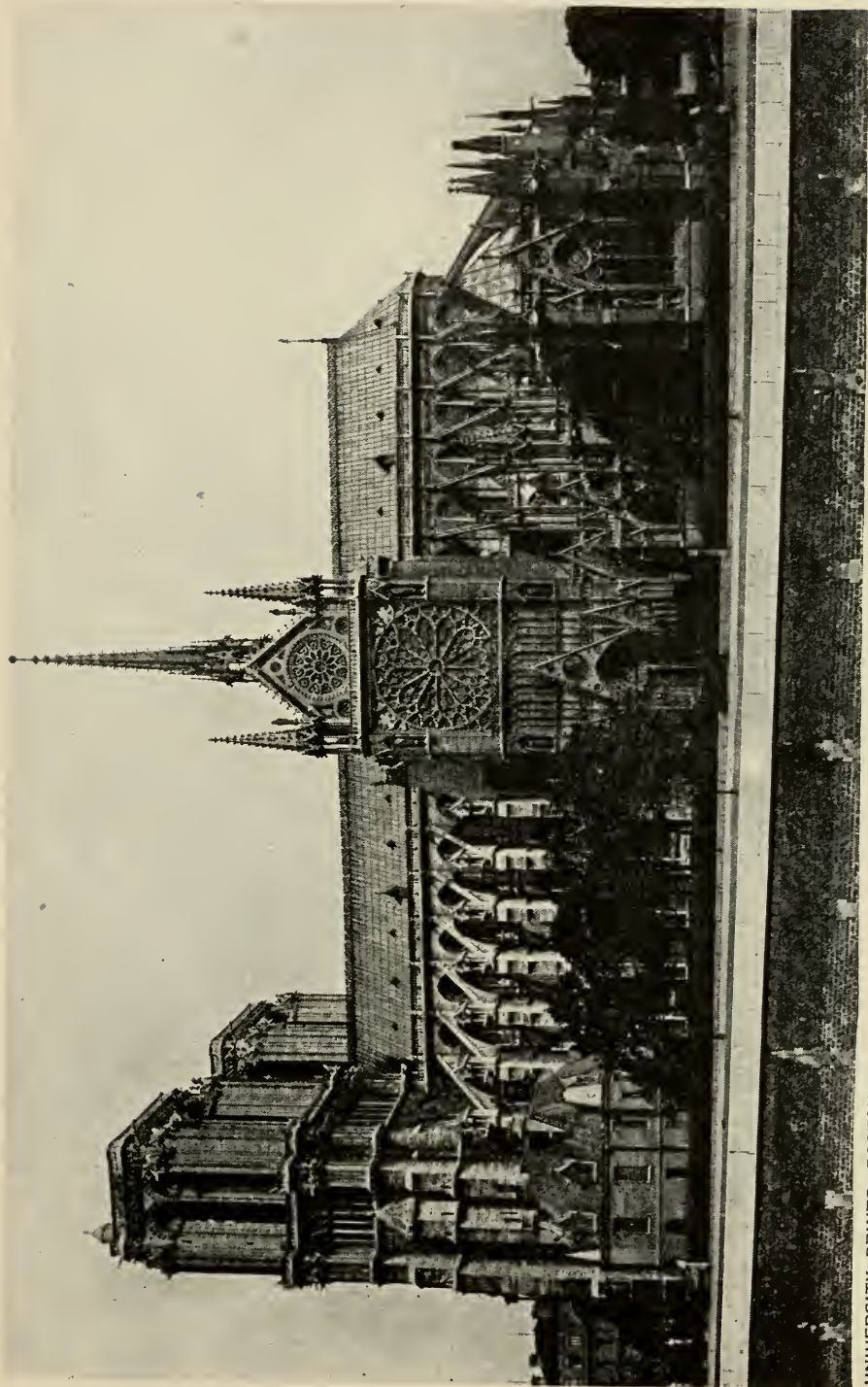




UNIVERSITY PRINTS, BOSTON

NOTRE DAME, PARIS. NAVE, LOOKING EAST  
GOTHIC. 1163—c. 1245





UNIVERSITY PRINTS, BOSTON

VIEW FROM SOUTH. CATHEDRAL (NOTRE DAME), PARIS  
GOTHIC. BEGUN IN 1163. WEST FRONT, NEW CLERESTORY AND TRANSEPT FAÇADES c. 1210-1260;  
CHAPELS c. 1296-1320; NEW SPIRE AND OTHER RESTORATIONS SINCE 1843

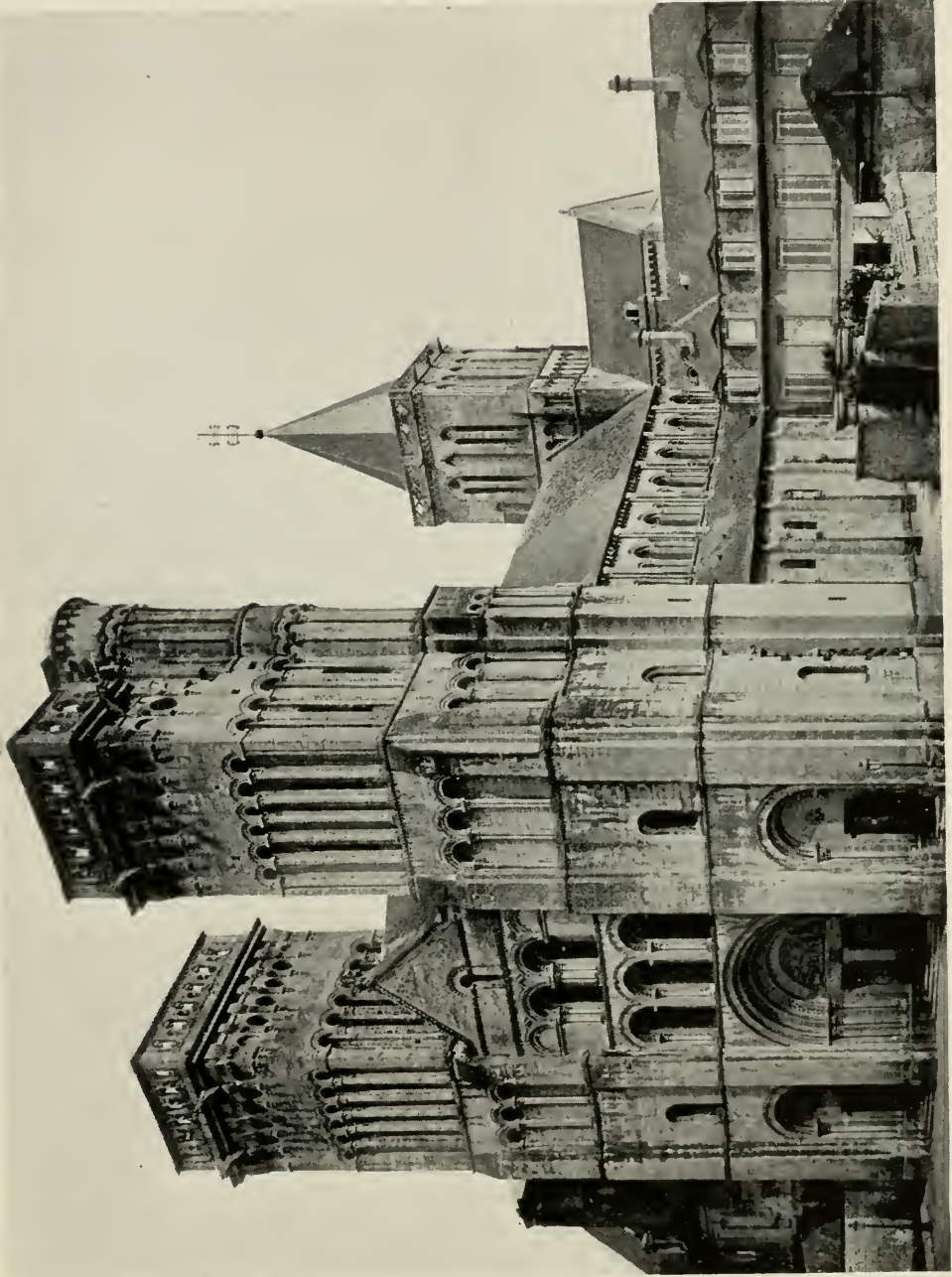




UNIVERSITY PRINTS, BOSTON

WEST END. CATHEDRAL, CHARTRES  
GOTHIC. OLDER PARTS c. 1135-45 AND c. 1200;  
SOUTH TOWER FINISHED c. 1180; NORTH TOWER FINISHED 1507-13  
ARCHITECT. JEAN DE BEAUCE





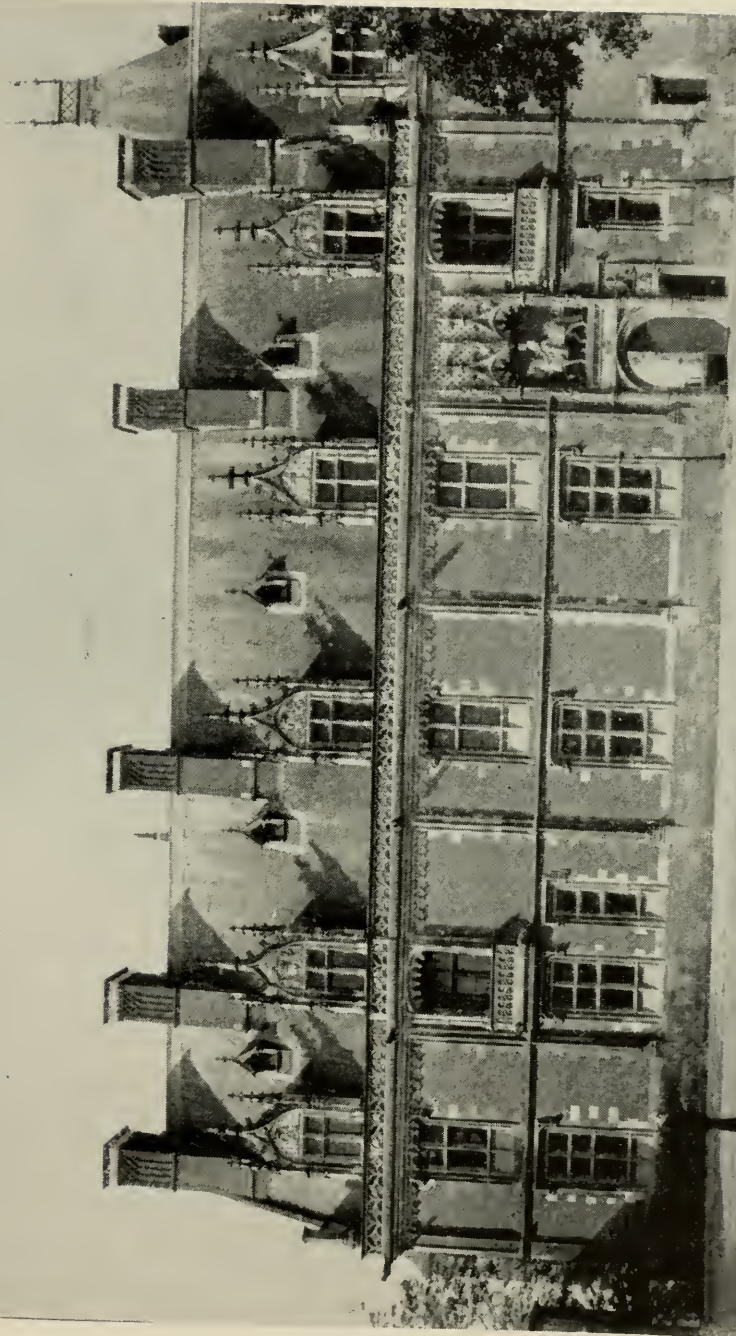
WEST END  
*Ste. Trinité (Abbaye-aux-Dames), Caen*

ROMANESQUE  
XI-XII CENT.

THE UNIVERSITY PRINTS  
BOSTON



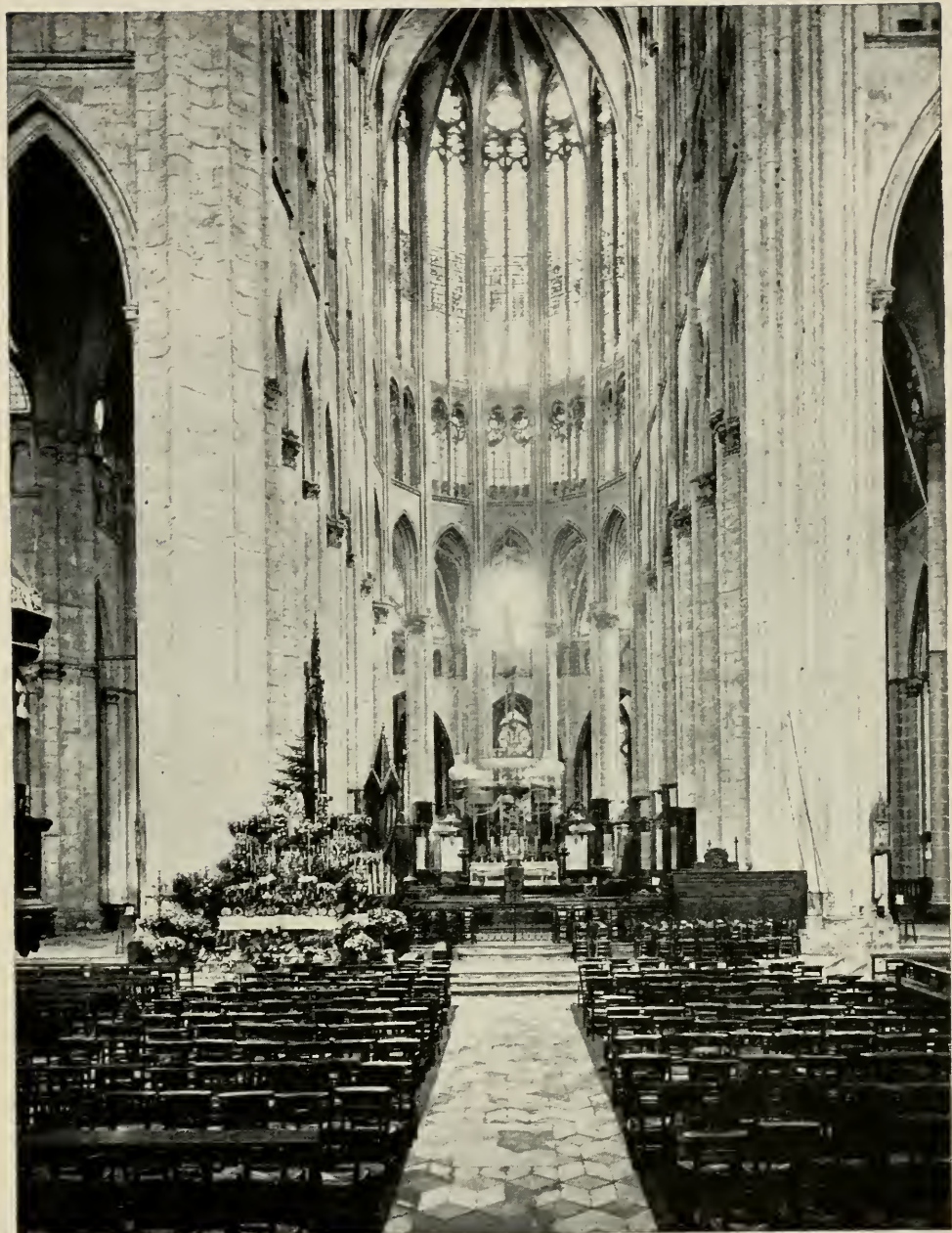




UNIVERSITY PRINTS, BOSTON

CHATEAU, BLOIS. WING OF LOUIS XII  
LATE GOTHIC. FINISHED 1503





UNIVERSITY PRINTS, BOSTON

CHOIR. CATHEDRAL, BEAUVAIS  
GOTHIC. 1227—1272. REBUILT 1284—1325





UNIVERSITY PRINTS, BOSTON

CHOIR FROM TRIFORIUM. CATHEDRAL, AMIENS  
GOTHIC. NAVE BEGUN 1220, CHOIR FINISHED 1269





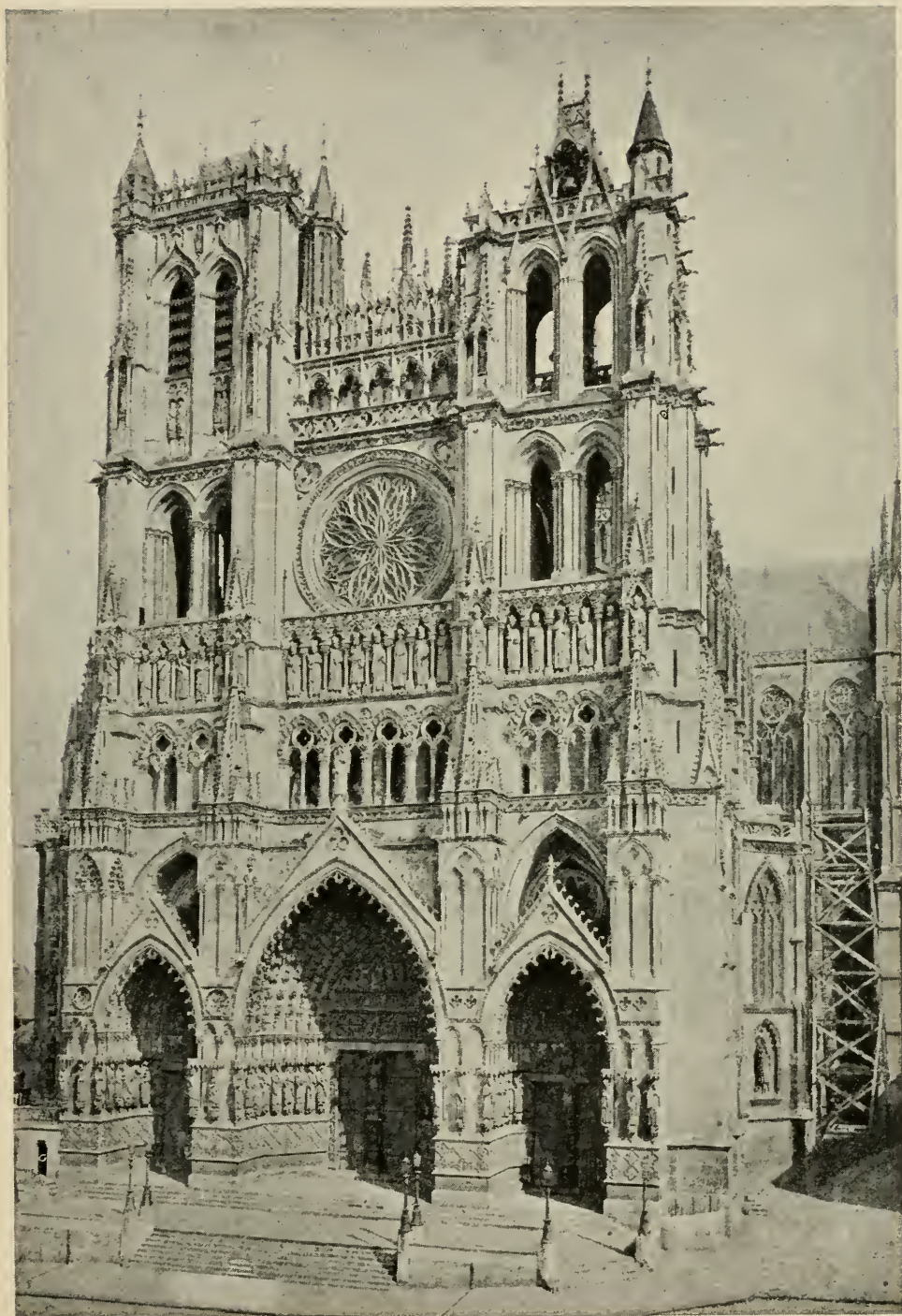
UNIVERSITY PRINTS, BOSTON

NAVE, LOOKING EAST. CATHEDRAL, AMIENS

GOTHIC. 1220—69





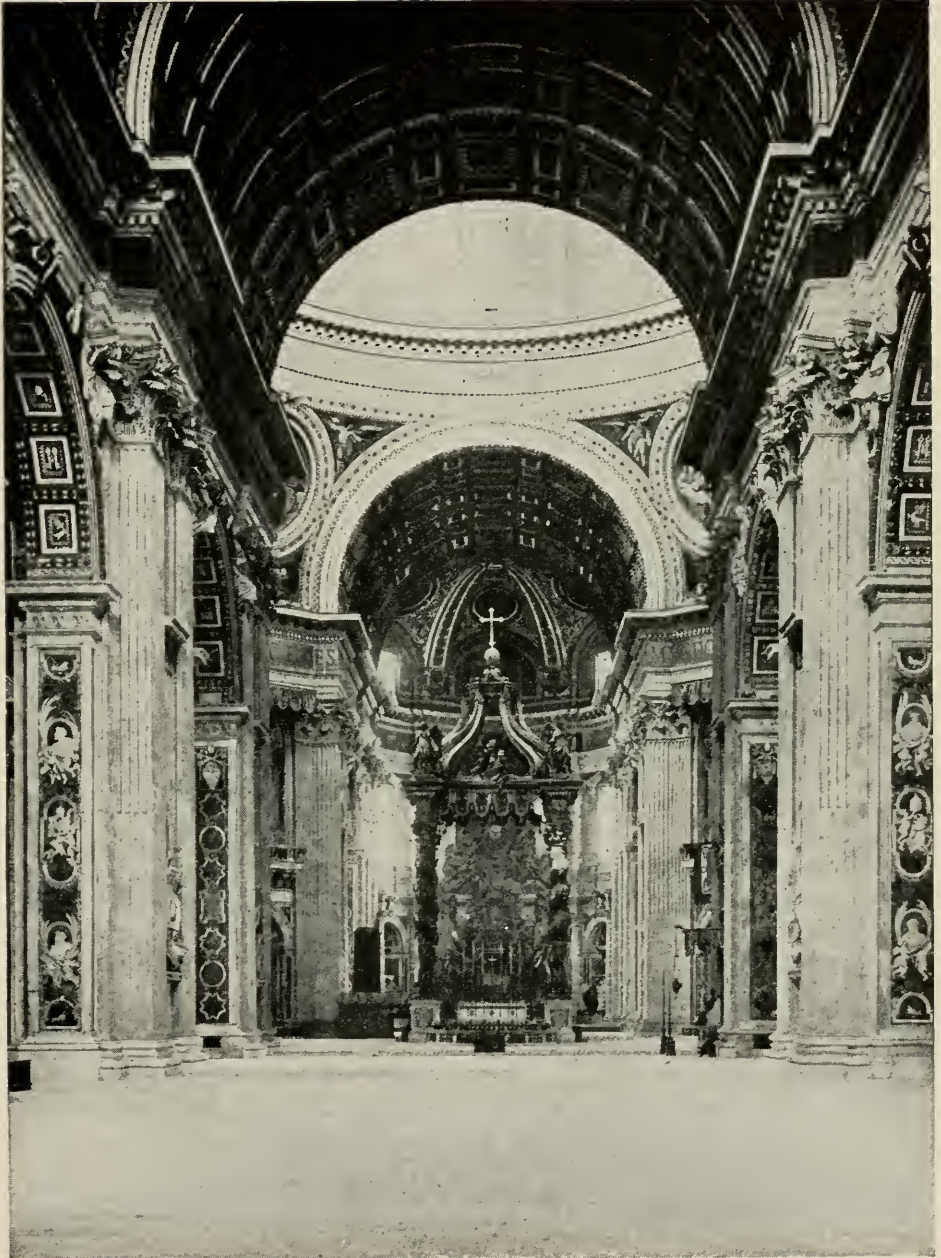


UNIVERSITY PRINTS, BOSTON

WEST END. CATHEDRAL, AMIENS

GOthic. MAINLY 1220—1269. FLAMBOYANT ADDITIONS 1373—1549

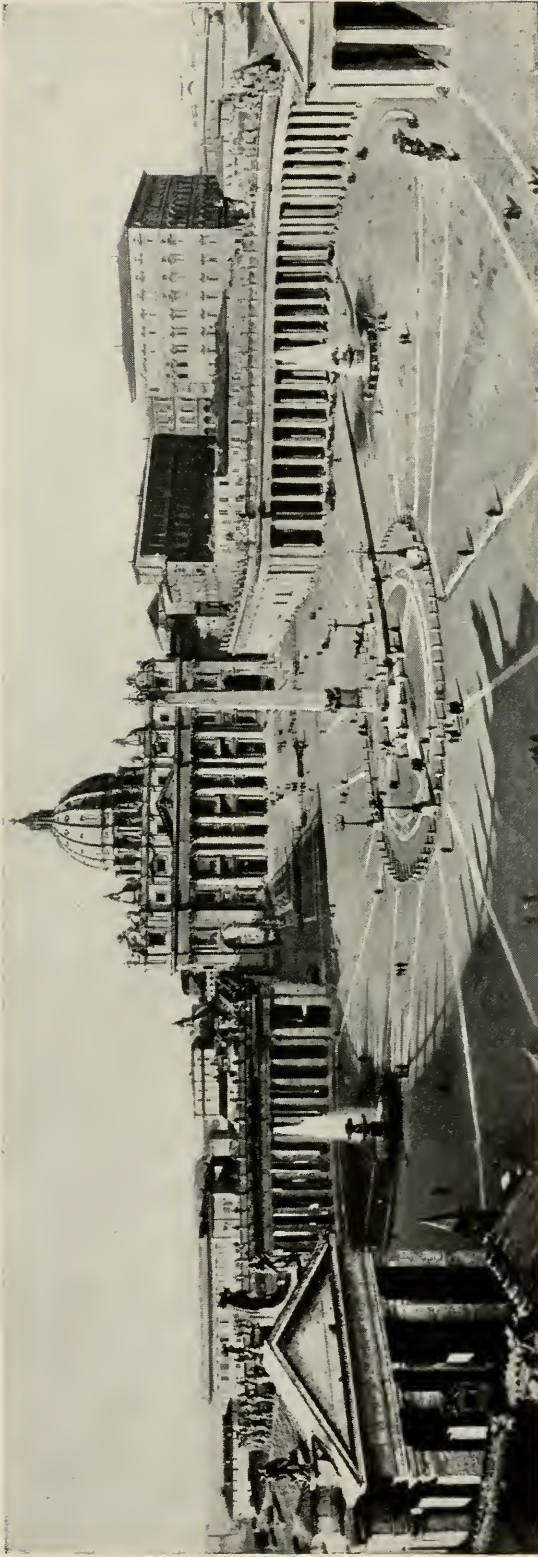




UNIVERSITY PRINTS, BOSTON

NAVE AND CROSSING. SAN PIETRO IN VATICANO, ROME  
RENAISSANCE. 1506—1626  
ARCHITECTS. CHIEFLY BRAMANTE, MICHELANGELO AND MADERNA

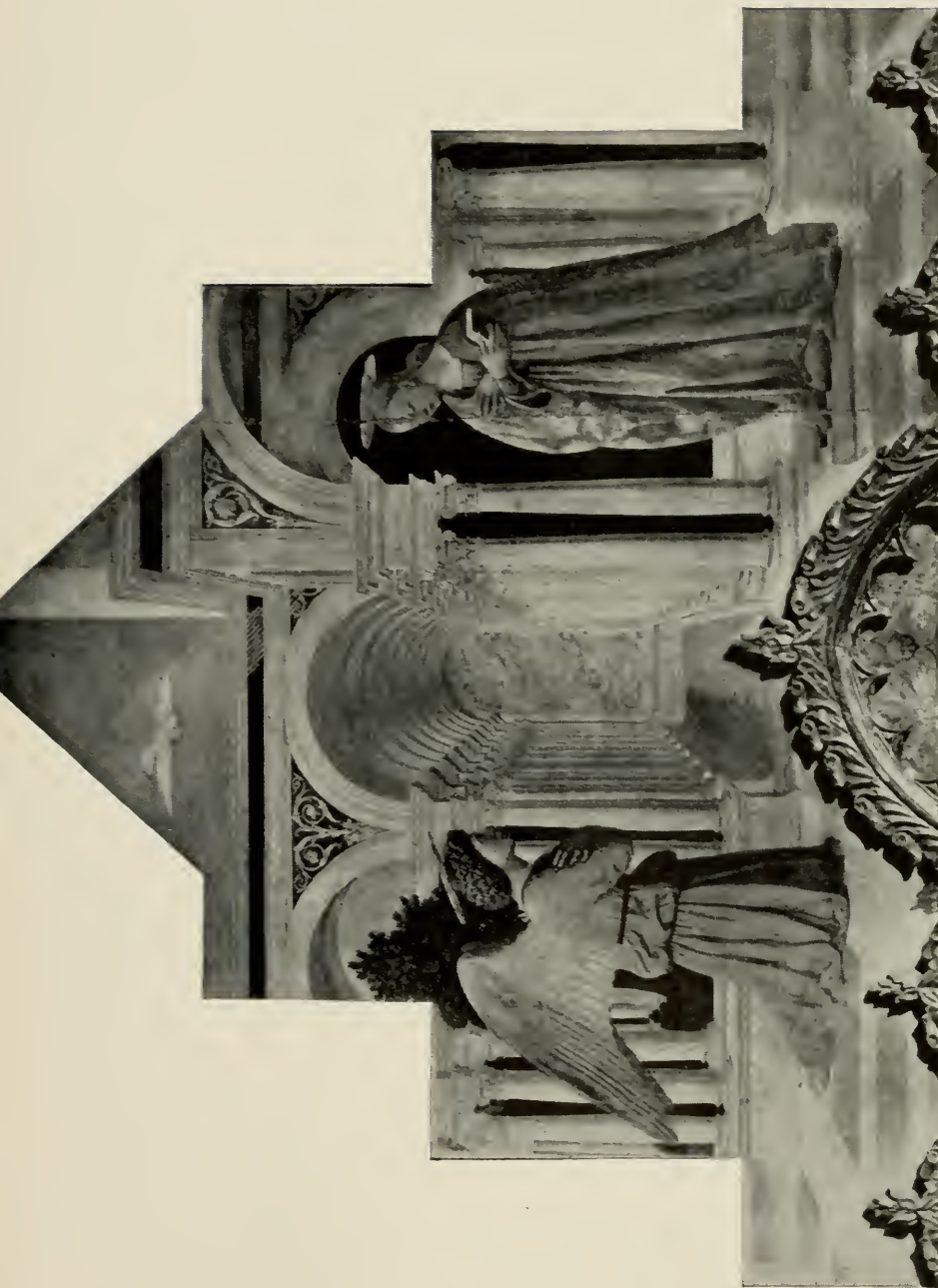




UNIVERSITY PRINTS, BOSTON

ST. PETER'S AND PIAZZA, ROME  
RENAISSANCE. 1506—1668  
PRINCIPAL ARCHITECTS. BRAMANTE, MICHELANGELO, MADERNA, BERNINI





ANNUNCIATION  
*Pierro della Francesca, Perugia*

THE UNIVERSITY PRINTS  
BOSTON

PIERRO DELLA FRANCESCA. 1420?—1492  
UMBRIAN SCHOOL







UNIVERSITY PRINTS, BOSTON

FAÇADE. CHURCH OF THE GESÙ, ROME  
RENAISSANCE. ARCHITECT. VIGNOLA c. 1568  
MODIFIED BY DELLA PORTA 1576—1584

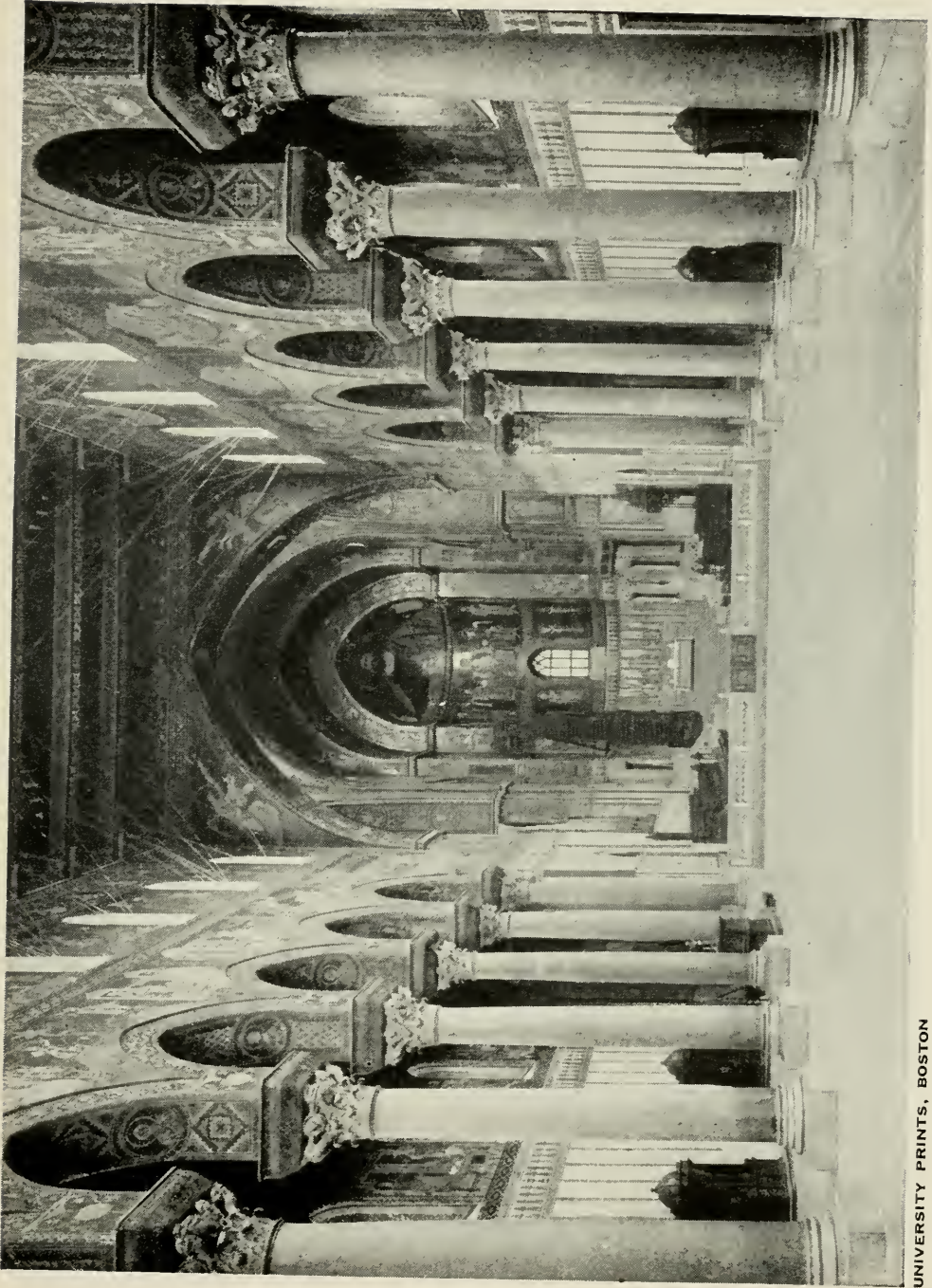




UNIVERSITY PRINTS, BOSTON

FAÇADE. SANT' ANDREA, MANTUA  
RENAISSANCE. 1472  
ARCHITECT. ALBERTI

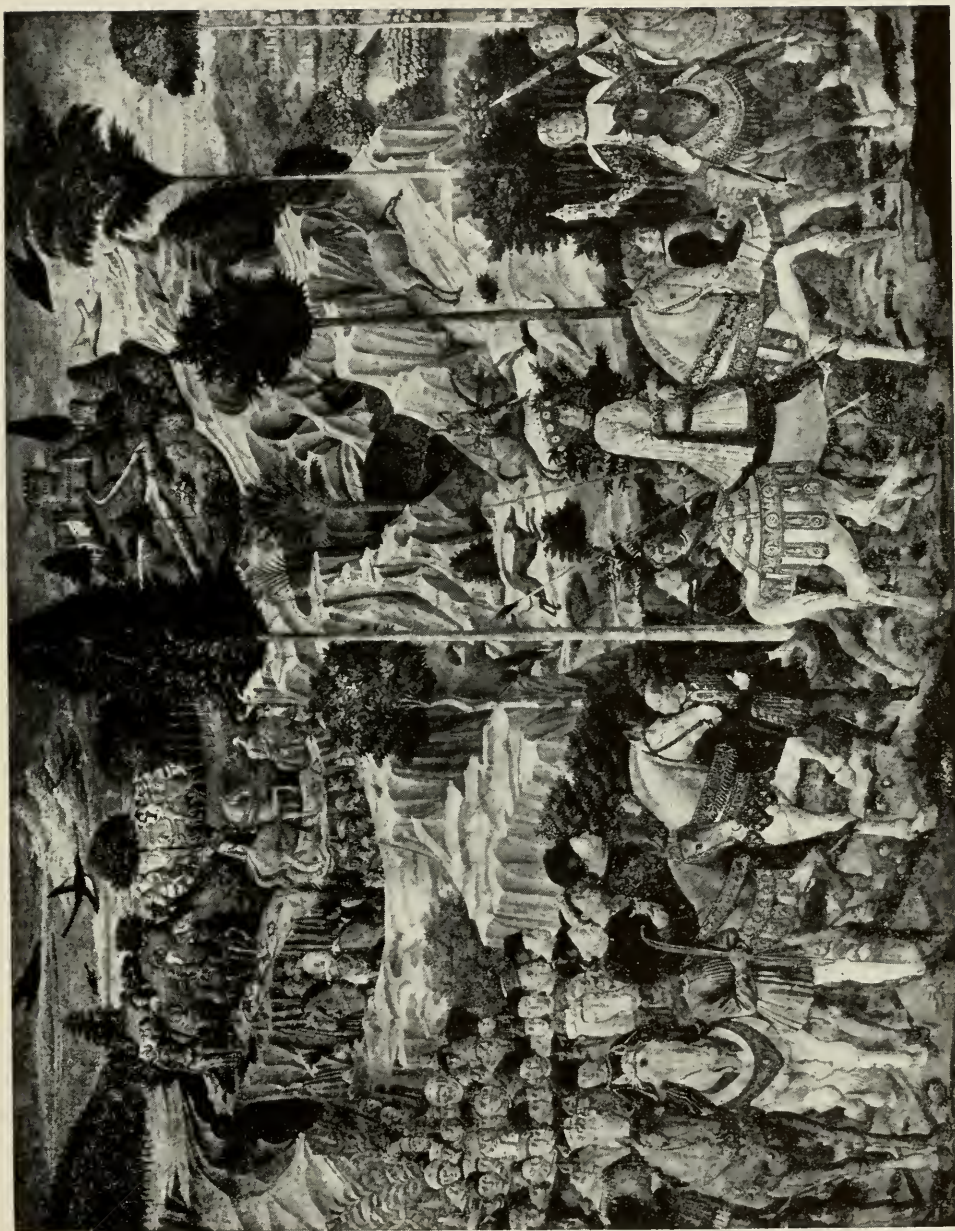




UNIVERSITY PRINTS, BOSTON

INTERIOR, CATHEDRAL, MONREALE  
SICILIAN ROMANESQUE. 1174—1189





THE JOURNEY OF THE MAGI (Detail)  
*Medici Chapel, Riccardi Palace, Florence*

THE UNIVERSITY PRINTS  
BOSTON

BENOZZO GOZZOLI. 1420—1497  
FLORENTINE SCHOOL







UNIVERSITY PRINTS, BOSTON

THE CORONATION OF THE VIRGIN  
UFFIZI, FLORENCE





UNIVERSITY PRINTS, BOSTON

INTERIOR. CATHEDRAL, FLORENCE

ITALIAN GOTHIC. BEGUN 1298. ARCHITECT. ARNOŁFO DI CAMBIO  
SCHEME ENLARGED 1367, MODIFIED 1407.  
FINISHED IN RENAISSANCE STYLE 1467

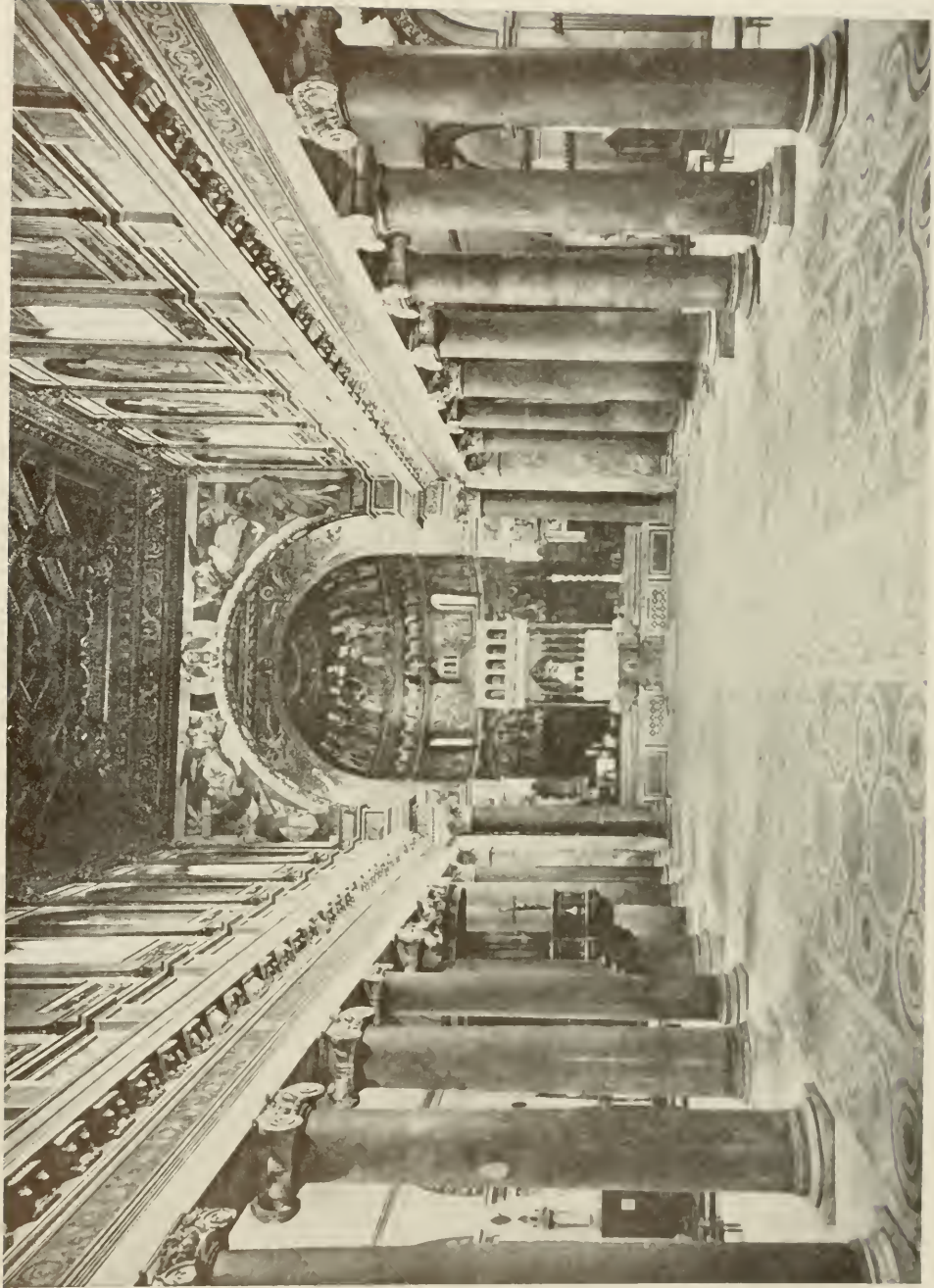




UNIVERSITY PRINTS, BOSTON

CATHEDRAL AND CAMPANILE, FLORENCE  
GOTHIC. PLAN ARNOLFO 1296, EXPANDED 1357—68, COMPLETED 1461





INTERIOR OF BASILICA

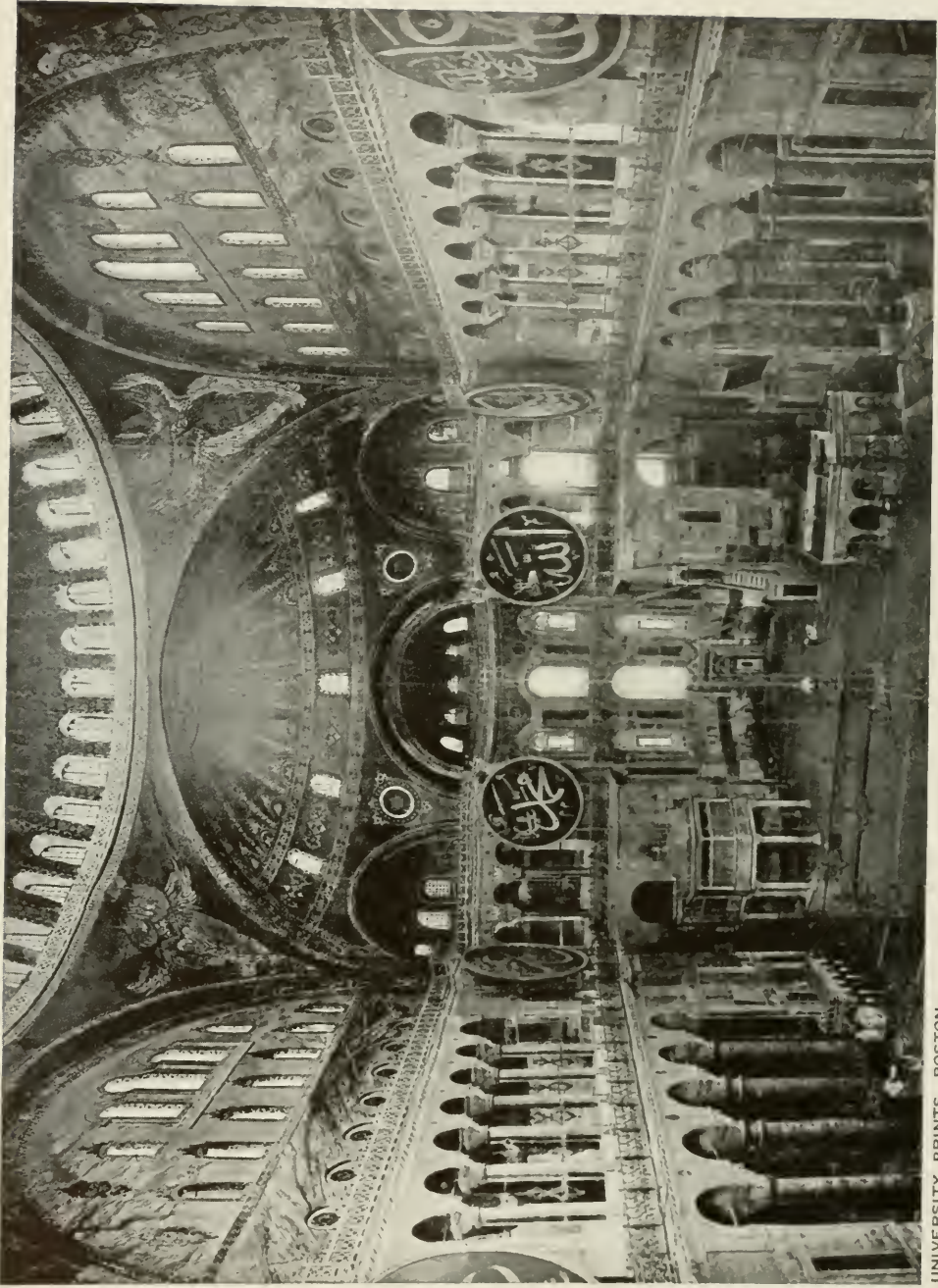
*Santa Maria in Trastevere, Rome*

THE UNIVERSITY PRINTS  
BOSTON

IV CENT. REMODELLED: RENAISSANCE ADDITIONS  
EARLY CHRISTIAN







UNIVERSITY PRINTS, BOSTON

INTERIOR, LOOKING EAST. SAINT SOPHIA, CONSTANTINOPLE  
BYZANTINE. 532—537. DOME 558—562





UNIVERSITY PRINTS, BOSTON

EXTERIOR. SAINT SOPHIA, CONSTANTINOPLE  
BYZANTINE. 532-537 AND 558-562





UNIVERSITY PRINTS, BOSTON

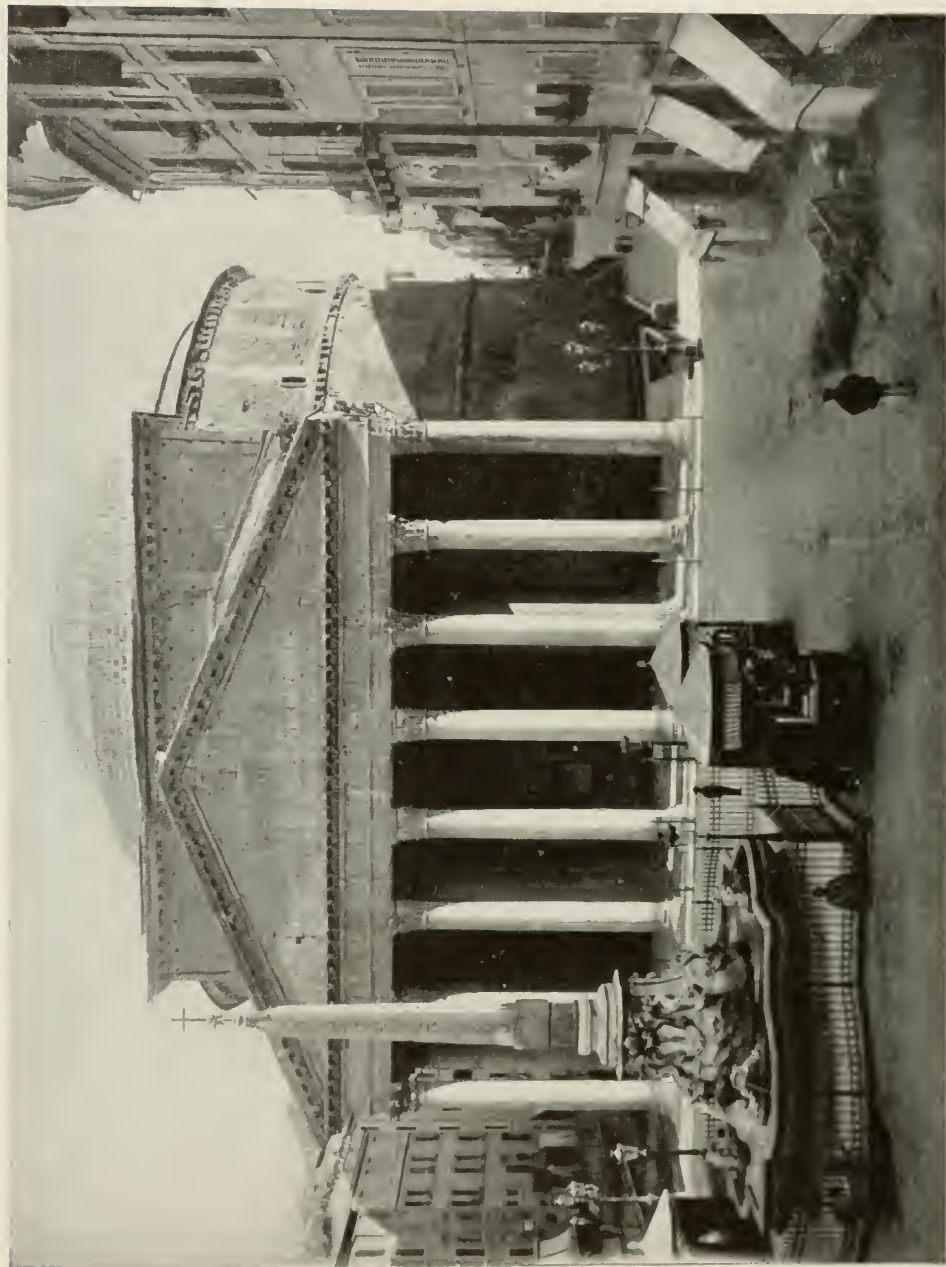
THE ANNUNCIATION

UFFIZI, FLORENCE

SIMONE MARTINI. 1283-1344

SIENESE SCHOOL





UNIVERSITY PRINTS, BOSTON

PANTHEON, ROME  
ROMAN. C. 120 - 125 A.D.



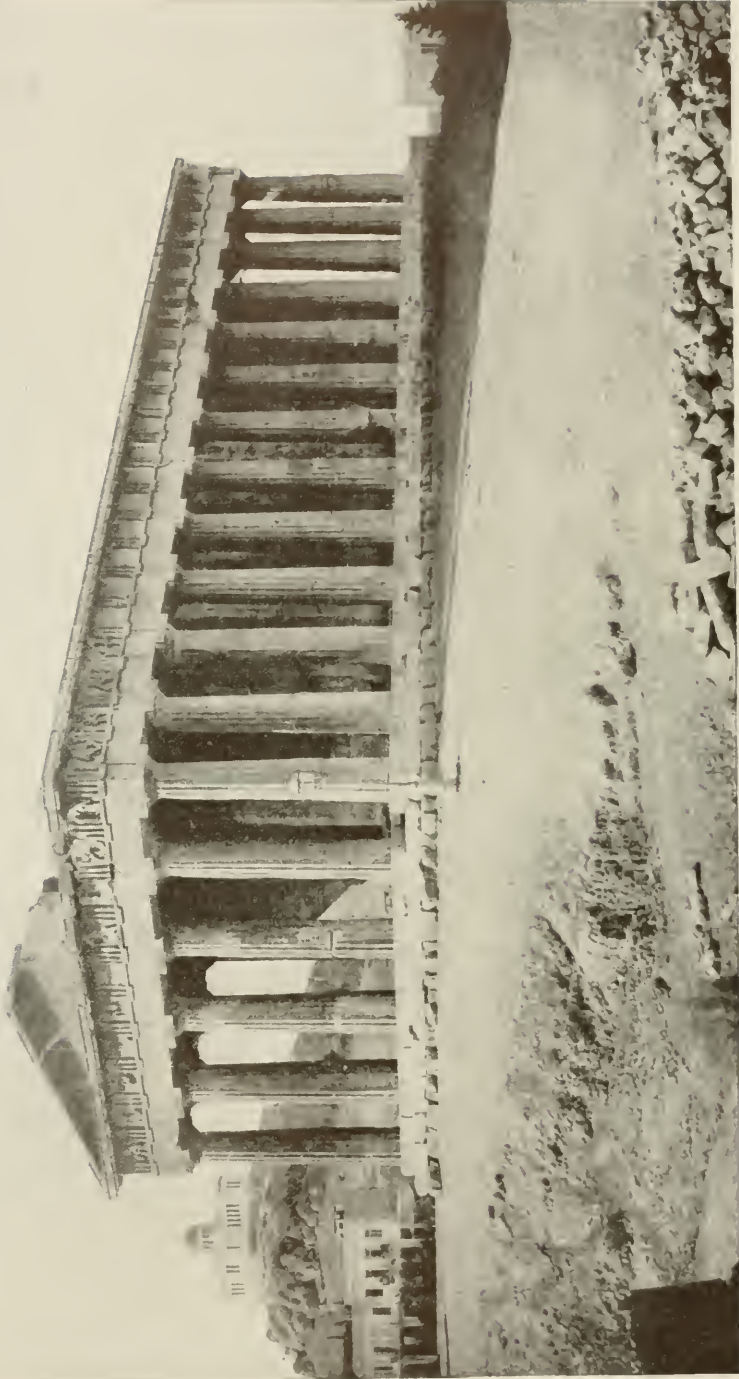




UNIVERSITY PRINTS, BOSTON

INTERIOR. CHAPEL OF THE ARENA, PADUA





THE "THESEUM" (TEMPLE OF HEPHAESTUS AND ATHENA)  
*Athens*

THE UNIVERSITY PRINTS  
BOSTON

GREEK  
450—440 B. C.





TRIBUNE  
*Cathedral, Monreale, Sicily*

THE UNIVERSITY PRINTS  
BOSTON

MOSAIC. TWELFTH CENTURY



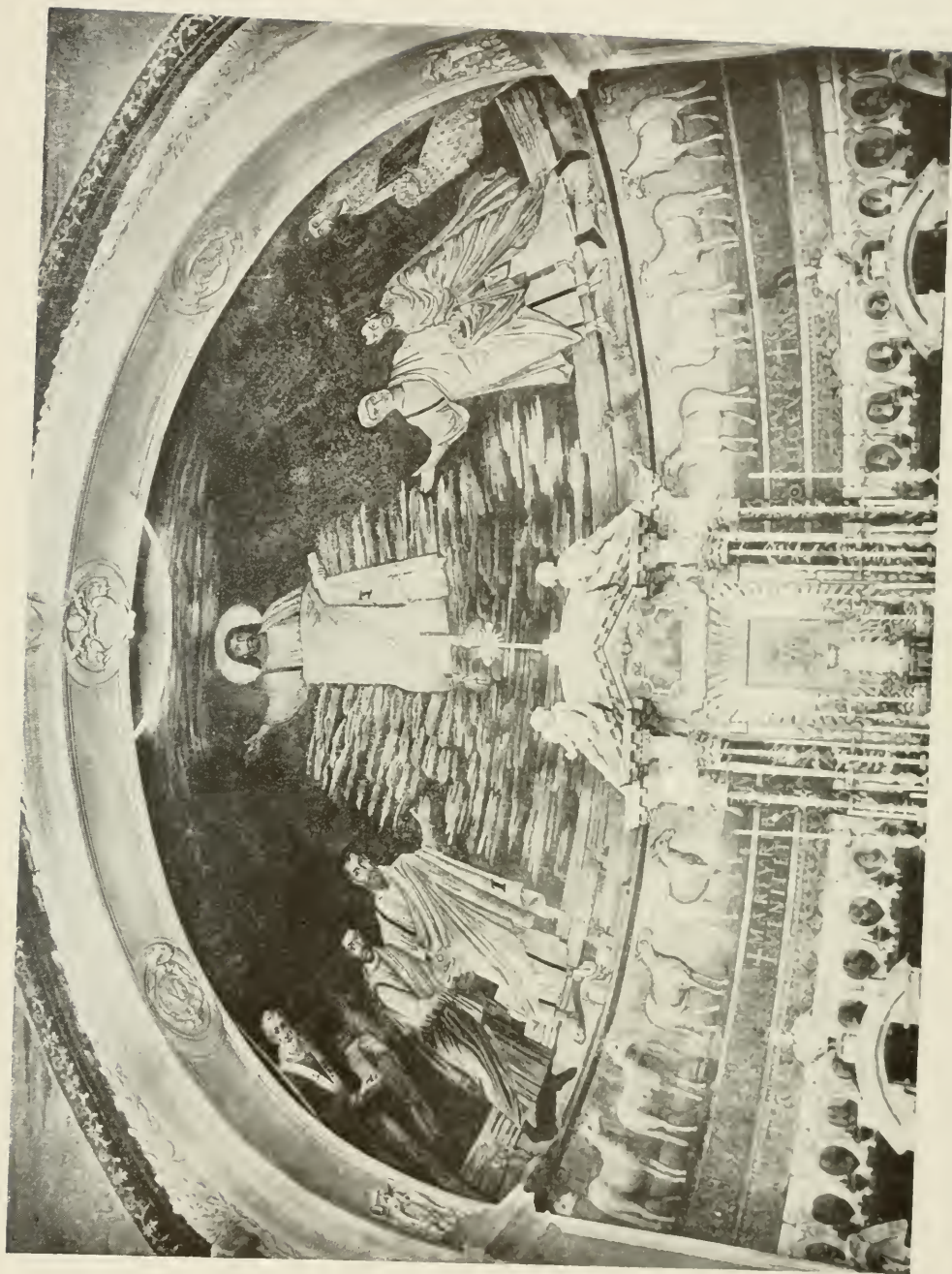


UNIVERSITY PRINTS, BOSTON

INTERIOR OF S. APOLLINARE NUOVO, RAVENNA  
MOSAIC. SIXTH CENTURY





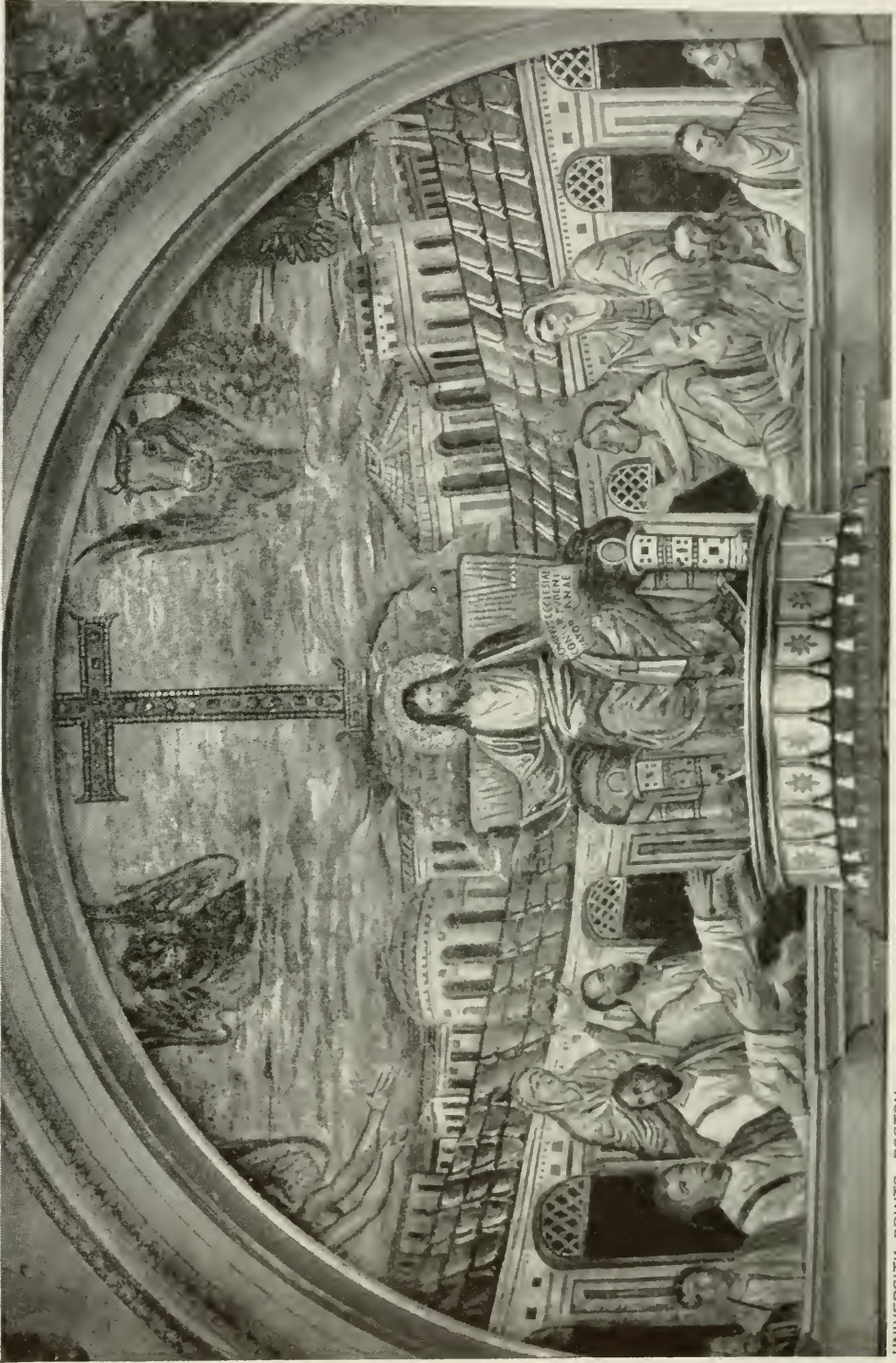


SEMI-DOME OF APSE  
SS. Cosmo & Damiano, Rome

MOSAIC, SIXTH CENTURY

THE UNIVERSITY PRINTS  
BOSTON





UNIVERSITY PRINTS, BOSTON

SEMI-DOME OF APSE  
CHURCH OF S. PUDENZIANA, ROME  
MOSAIC. IV CENT.





ADORATION OF THE LAMB: Detail, Ghent Altarpiece

*S. Bavon, Ghent*

HUBERT VAN EYCK. C. 1366—1426

JAN VAN EYCK. C. 1382—1440

EARLY SCHOOL OF THE NETHERLANDS

THE UNIVERSITY PRINTS  
BOSTON





THE GHENT ALTARPIECE  
*St. Bavon, Ghent*

HUBERT VAN EYCK. c. 1366—1426  
 JAN VAN EYCK. c. 1382—1440  
 EARLY SCHOOL OF THE NETHERLANDS

THE UNIVERSITY PRINTS  
 BOSTON







UNIVERSITY PRINTS, BOSTON

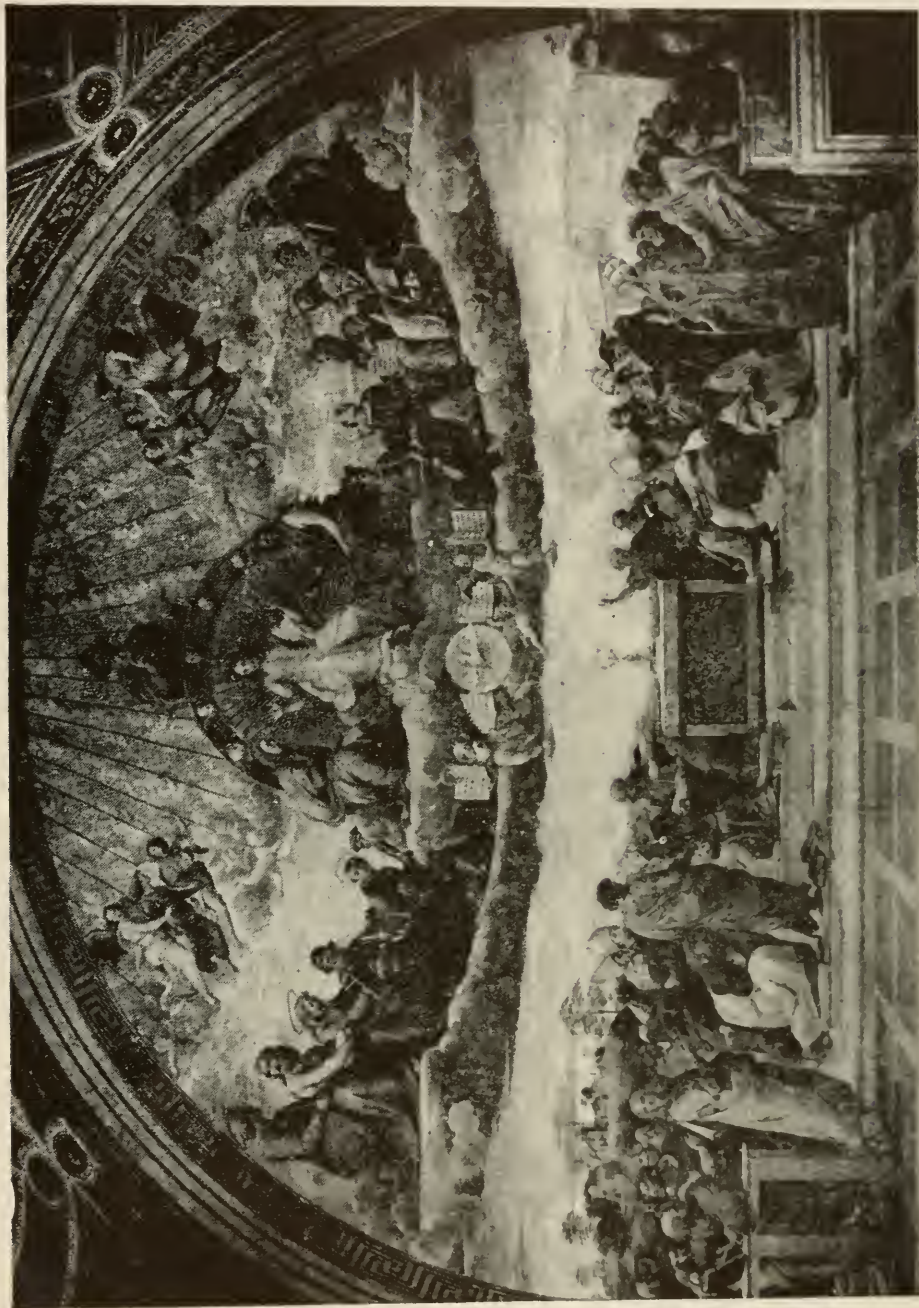
SECTION OF CUPOLA

CATHEDRAL, PARMA

CORREGGIO. 1494—1534

PARMA





UNIVERSITY PRINTS, BOSTON

THE DISPUTE OF THE SACRAMENT  
CAMERA DELLA SEGNATURA. VATICAN, ROME  
RAPHAEL. 1483-1520





SHRINE OF ST. URSULA  
*S. John's Hospital, Bruges*

THE UNIVERSITY PRINTS  
BOSTON

HANS MEMLING. c. 1430-1494  
EARLY SCHOOL OF THE NETHERLANDS





UNIVERSITY PRINTS, BOSTON

THE TEMPTATION OF ST. ANTHONY

ROYAL MUSEUM, BRUSSELS

HIERONYMUS VAN AEKEN (BOSCH). 1462?—1516

EARLY SCHOOL OF THE NETHERLANDS







MADONNA OF THE ROSE ARBOR  
*Museum, Cologne*

THE UNIVERSITY PRINTS  
BOSTON

STEPHEN LOCHNER. d. 1451  
GERMAN SCHOOL





THE FLAYING OF ST. BARTHOLOMEW  
*Kaiser Friedrich Museum, Berlin*

THE UNIVERSITY PRINTS  
BOSTON

RIBERA. 1588—1656





THE ECSTASY OF ST. ANTHONY OF PADUA  
*Cathedral, Seville*





THE STAR OF BETHLEHEM  
*Gallery, Birmingham*

THE UNIVERSITY PRINTS  
BOSTON

BURNE-JONES. 1833—1898







THE VIGIL  
*Tate Gallery, London*

THE UNIVERSITY PRINTS  
BOSTON

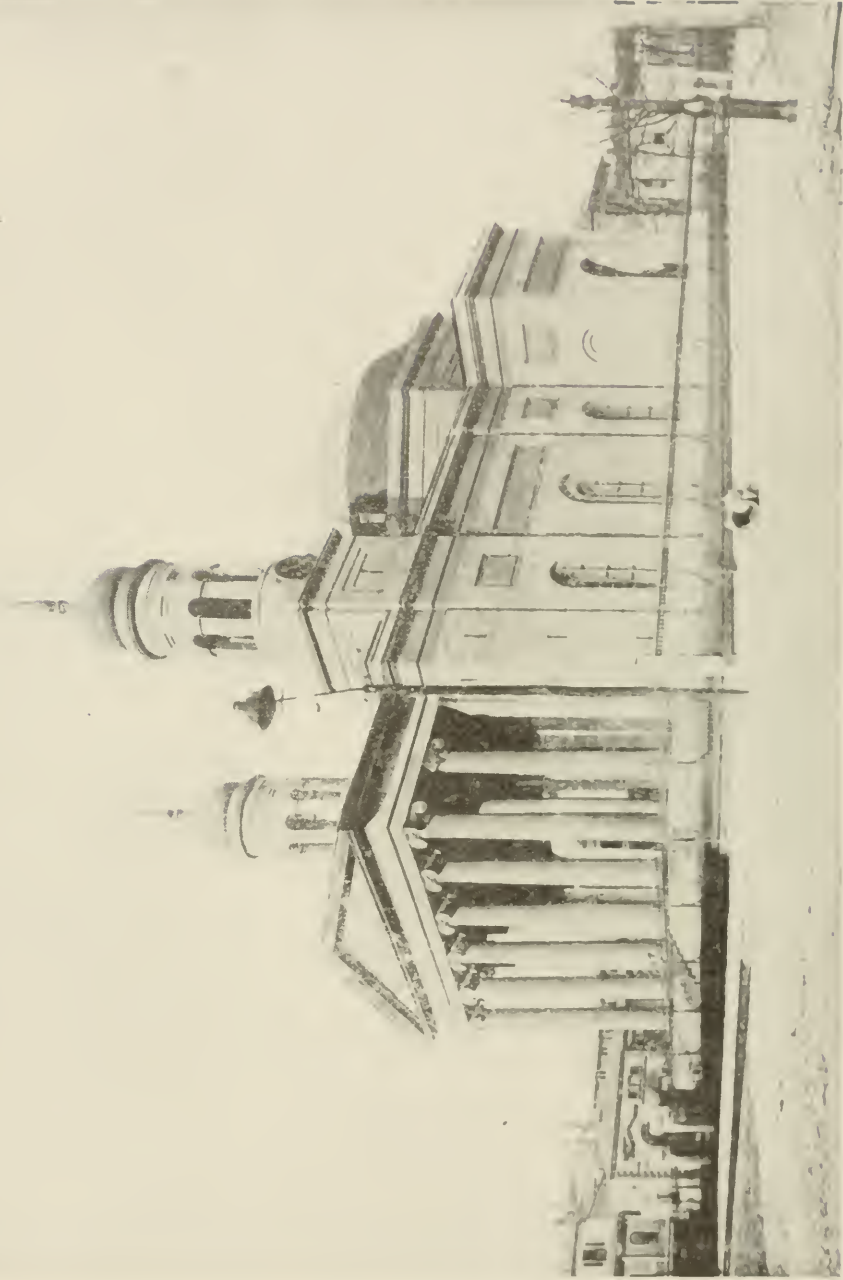
PETTIE. 1839 — 1893





ST. PAUL'S CHAPEL. ENGLISH COLONIAL. McBEAN. 1764—66. STEEPLE. 1794  
ST. PAUL BUILDING (MIDDLE RIGHT) POST. C. 1898  
PARK ROW BUILDING (MIDDLE LEFT) FUNCTIONAL STYLE. ROBERTSON. 1896—98  
*New York City*





ROMAN CATHOLIC CATHEDRAL  
*Baltimore, Maryland*

THE UNIVERSITY PRINTS  
BOSTON

NEO-CLASSIC  
ARCHITECT. LATROBE. 1805-21





STONE TEMPLE  
*Quincy, Mass.*

THE UNIVERSITY PRINTS  
BOSTON

NEO-CLASSIC  
ARCHITECT. PARRIS. 1828





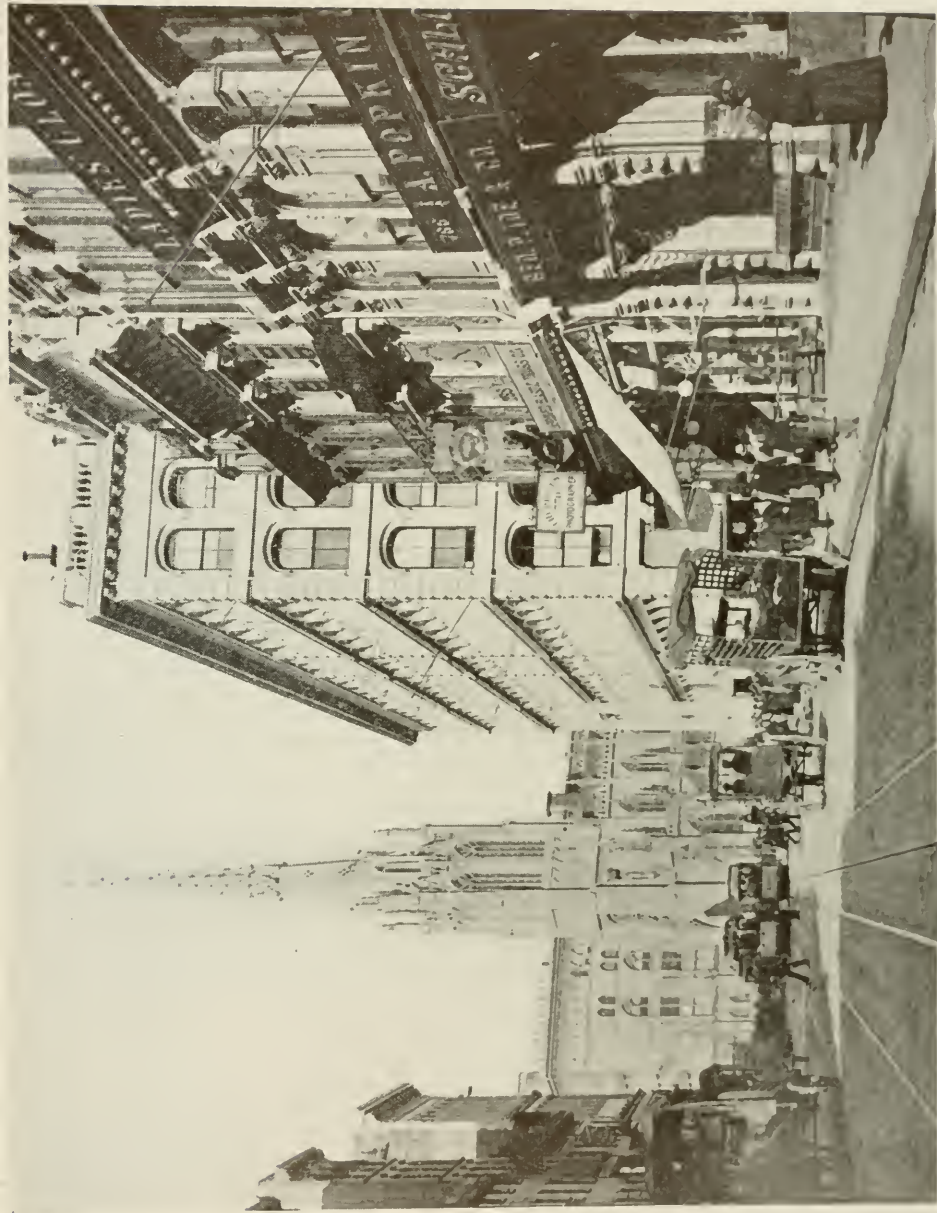


Photo. Ewing Galloway

GRACE CHURCH. GOTHIC REVIVAL. RENWICK. 1843—46  
STEWART STORE (CAST IRON FRONT). KELLUM. 1862—63  
*New York City*





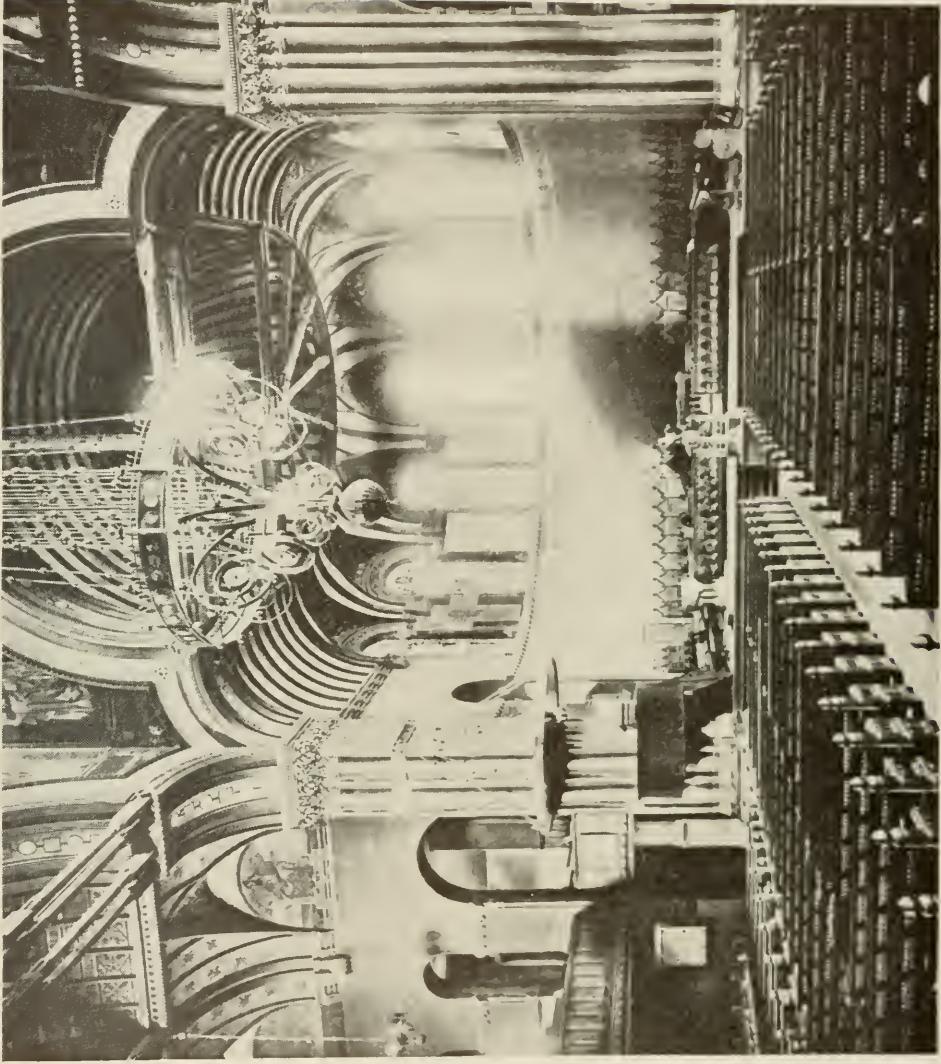
Photo. Ewing Galloway

TRINITY CHURCH  
*Boston, Mass.*

ROMANESQUE REVIVAL  
ARCHITECT. RICHARDSON. 1872—1877  
PORCH AND TURRETS. 1894—1898

THE UNIVERSITY PRINTS  
BOSTON





TRINITY CHURCH (INTERIOR)  
*Boston, Mass.*

THE UNIVERSITY PRINTS  
BOSTON

ROMANESQUE REVIVAL  
ARCHITECT. RICHARDSON. 1872—77



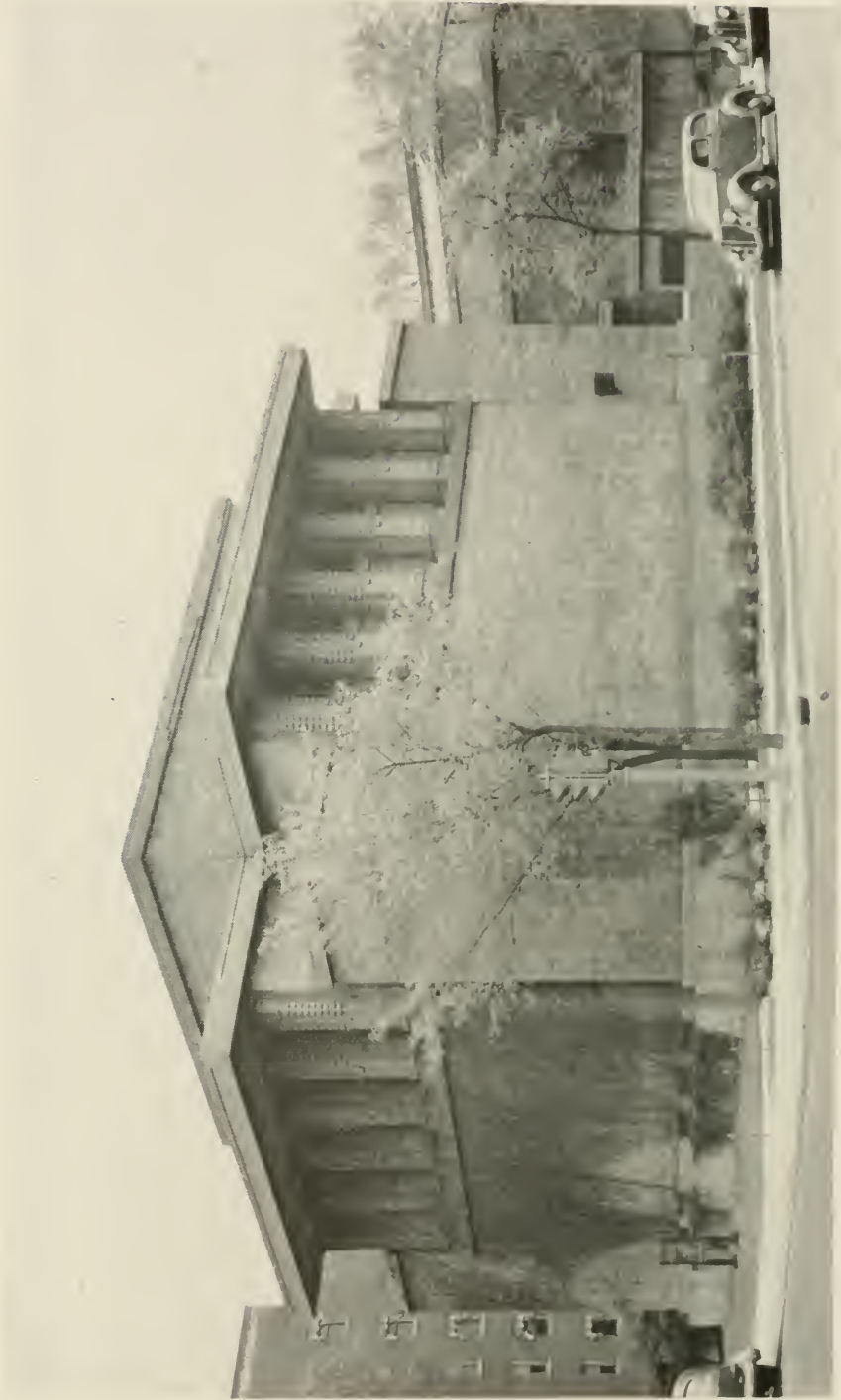


UNIVERSITY PRINTS, BOSTON

ST. THOMAS'S, NEW YORK CITY  
GOTHIC MANNER. 1906  
ARCHITECTS. CRAM, GOODHUE







UNIVERSITY PRINTS, BOSTON

UNITY TEMPLE. OAK PARK. ILLINOIS  
FUNCTIONAL STYLE. 1905—1907  
FRANK LLOYD WRIGHT





BOSTON AVENUE METHODIST CHURCH  
*Tulsa, Oklahoma*

THE UNIVERSITY PRINTS  
BOSTON

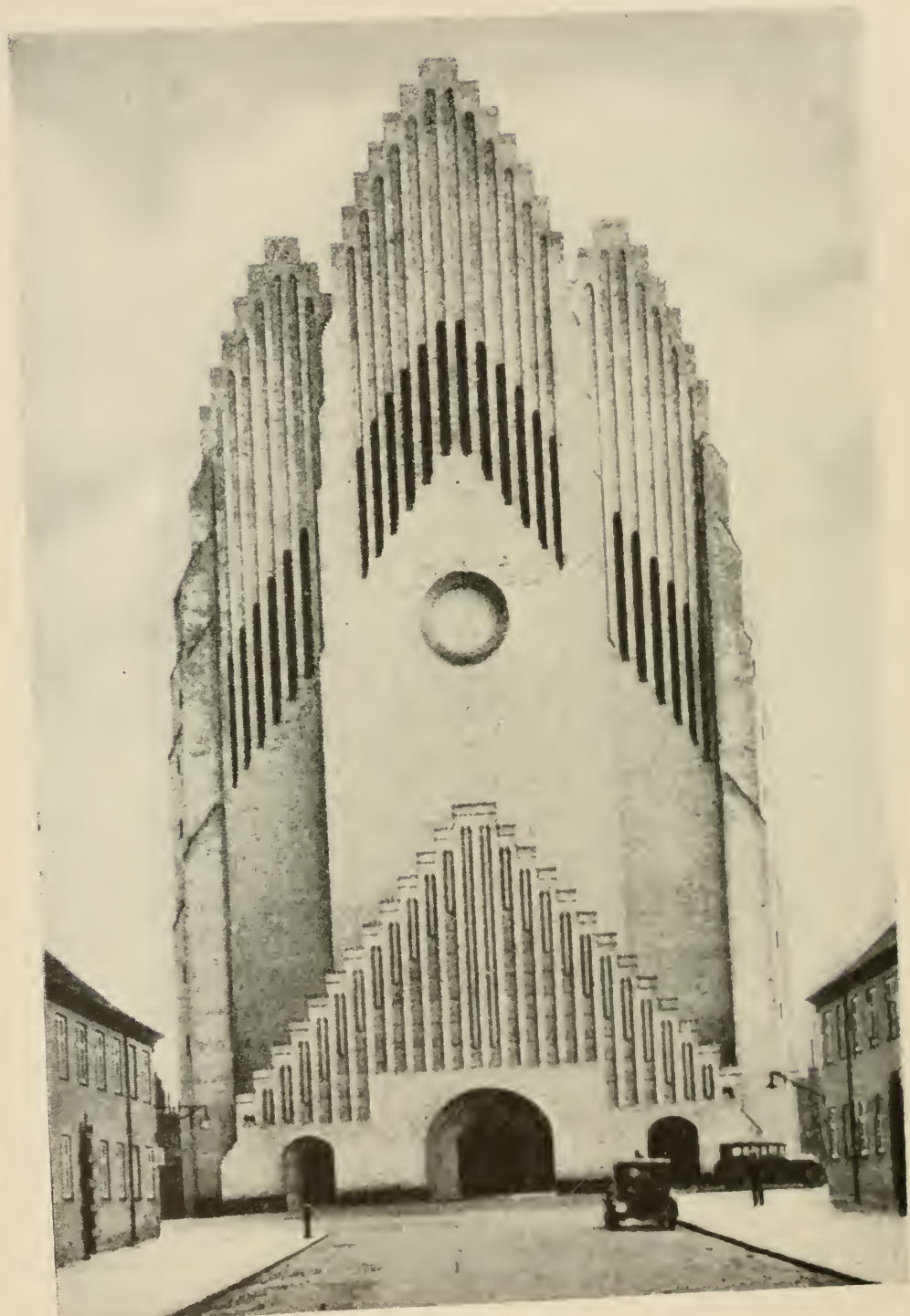
FUNCTIONAL STYLE  
ARCHITECTS. GOFF, RUSH, ENDACOTT. 1928





ST. PANCRAS CHURCH  
*London, England*



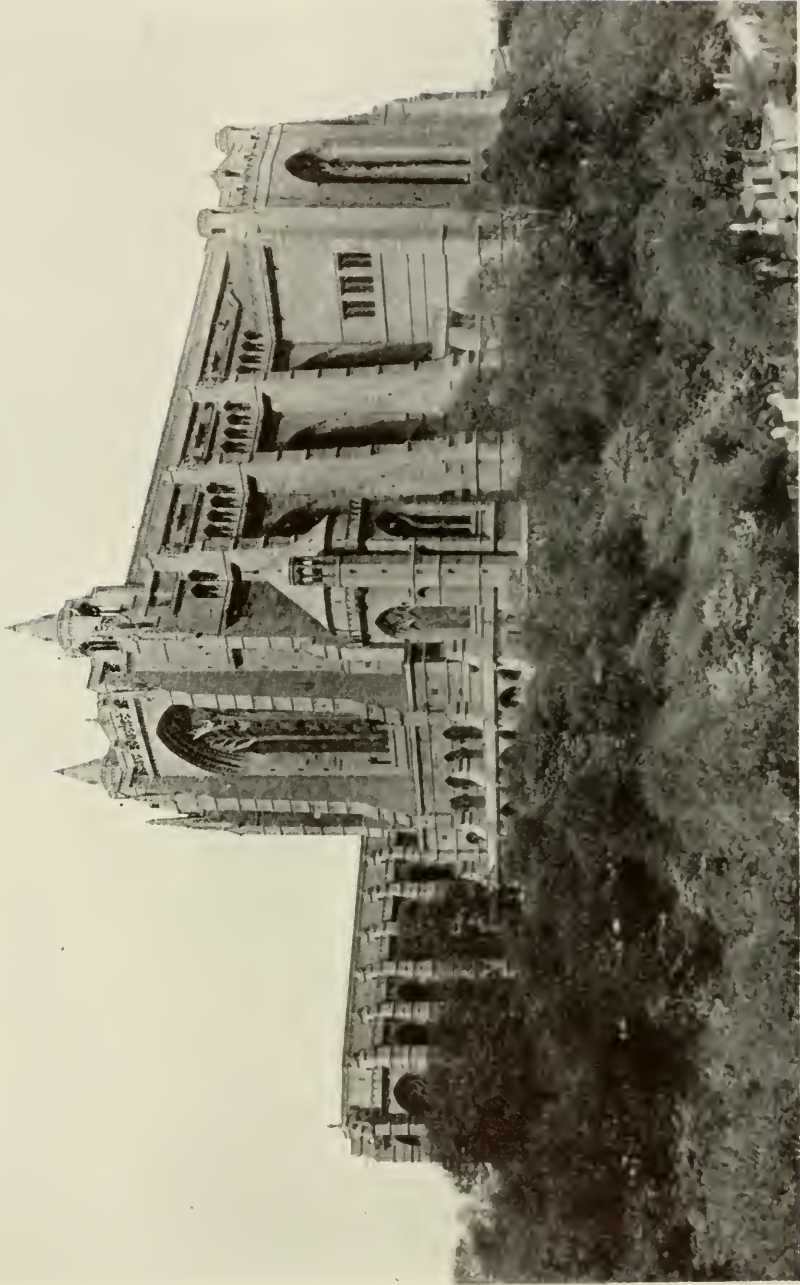


UNIVERSITY PRINTS, BOSTON

GRUNTVIG CHURCH, COPENHAGEN  
BALTIC STYLE. ADAPTATION. 1927  
ARCHITECT. JENSEN-KLINT







CATHEDRAL  
*Liverpool, England*

THE UNIVERSITY PRINTS  
BOSTON

GOTHIC MANNER  
ARCHITECT, G. G. SCOTT. 1904



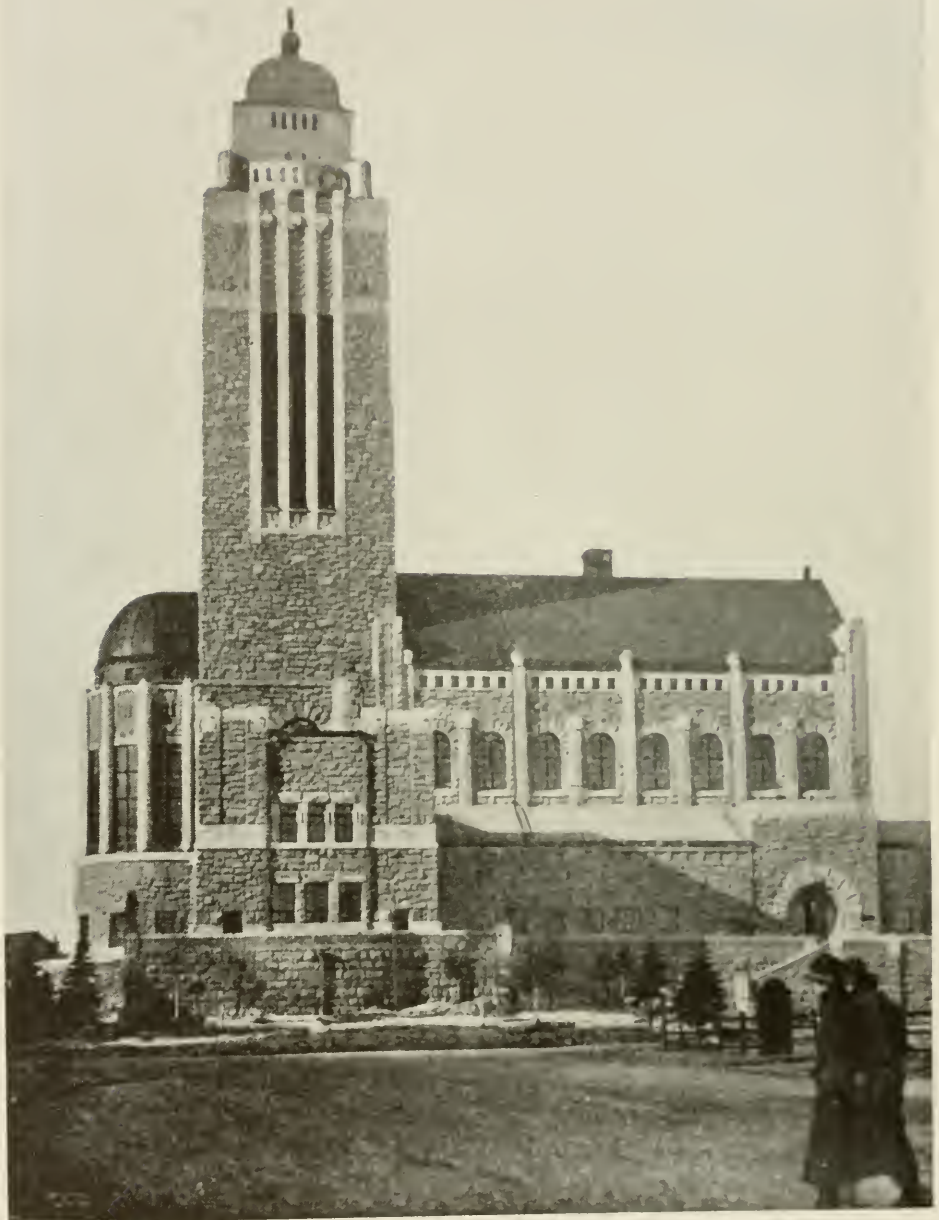


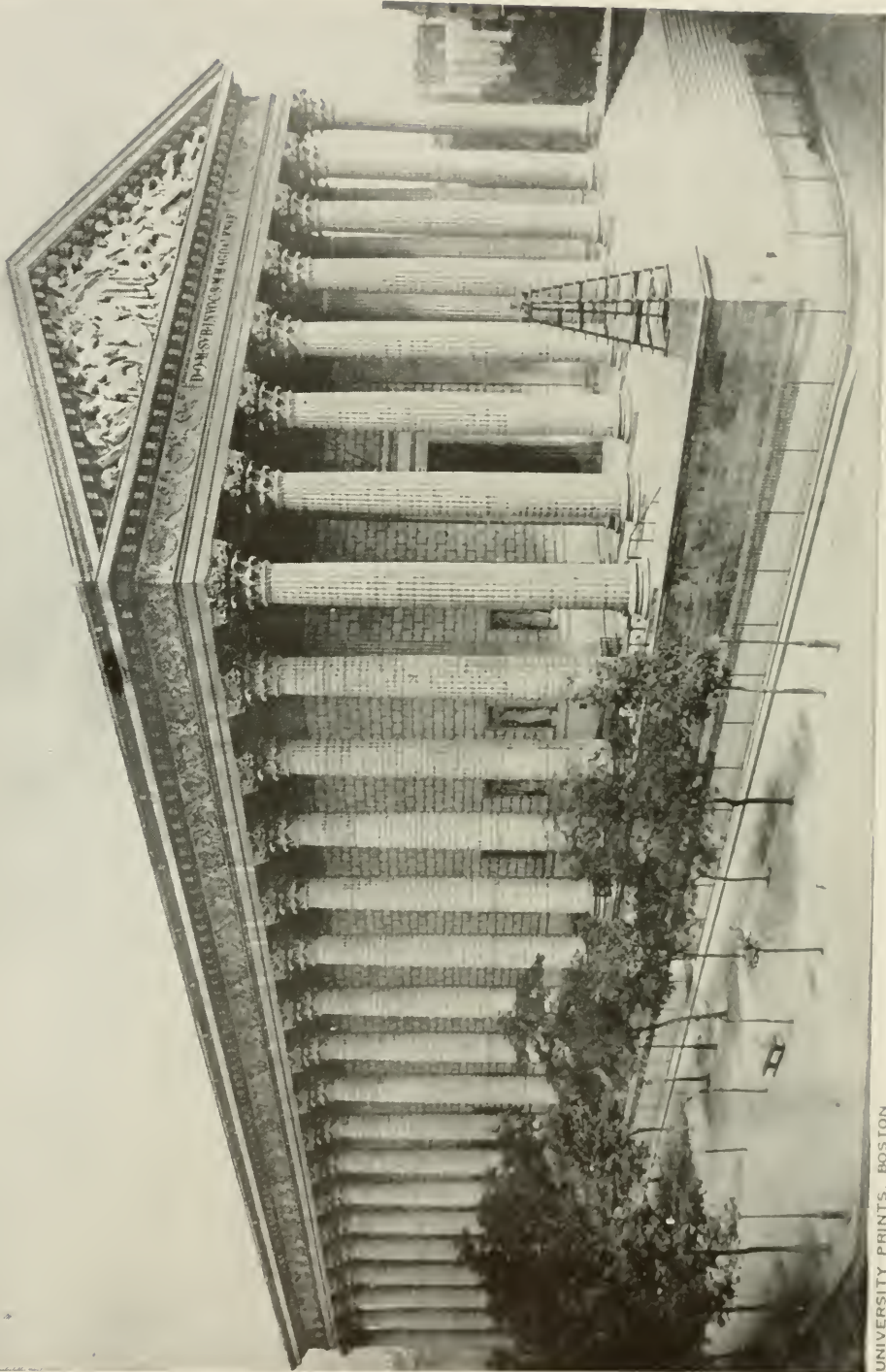
Photo. Ewing Galloway

**LUTHERAN CHURCH**  
*Helsingfors, Finland*

**THE UNIVERSITY PRINTS**  
**BOSTON**

**FUNCTIONAL STYLE**  
**ARCHITECT. SONCK, 1910**





UNIVERSITY PRINTS, BOSTON

CHURCH OF THE MADELEINE (EXTERIOR), PARIS, FRANCE  
NEO-CLASSIC

ARCHITECT, VIGNON. 1806-45





SACRÉ COEUR  
*Paris, France*

THE UNIVERSITY PRINTS  
BOSTON

ROMANESQUE REVIVAL  
ARCHITECT. ABADIE. 1874—1919







UNIVERSITY PRINTS, BOSTON

NOTRE DAME. LE RAINCY. FRANCE  
FUNCTIONAL STYLE  
ARCHITECT. PERRET. 1923—25

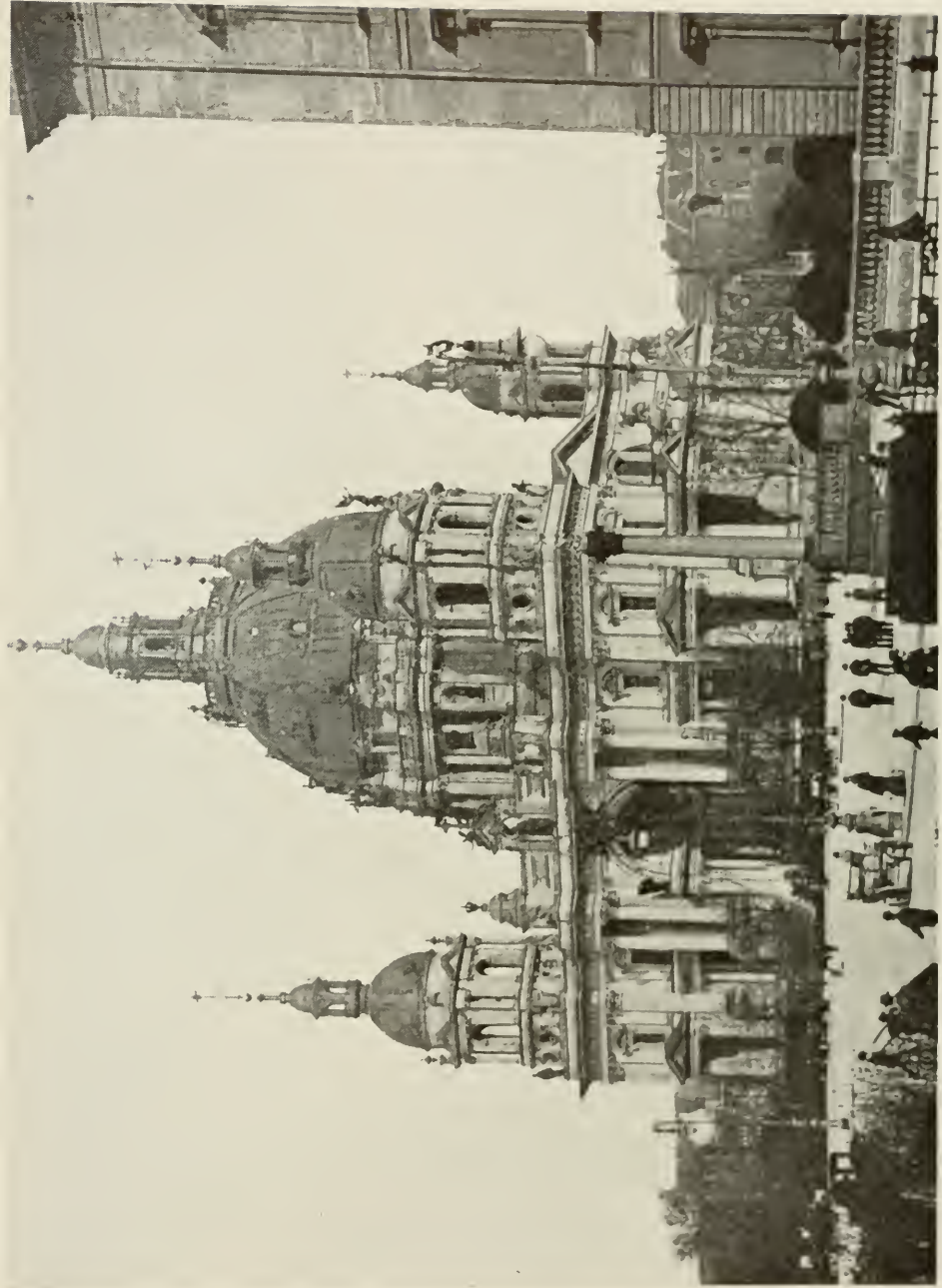




UNIVERSITY PRINTS, BOSTON

INTERIOR. NOTRE DAME. LE RAINCY, FRANCE  
FUNCTIONAL STYLE  
ARCHITECT. PERRET. 1923—25





CATHEDRAL  
*Berlin, Germany*

THE UNIVERSITY PRINTS  
BOSTON

BAROQUE REVIVAL  
ARCHITECT. RASCHDORF. 1894-1905





UNIVERSITY PRINTS, BOSTON

ROMAN CATHOLIC CHURCH. BISCHOFSSHEIM, GERMANY  
FUNCTIONAL STYLE  
ARCHITECT. BOEHM. 1926







ENGELBREKT CHURCH. EXTERIOR  
*Stockholm, Sweden*

THE UNIVERSITY PRINTS  
BOSTON

FUNCTIONAL STYLE  
ARCHITECT. WAHLMAN. 1914





ENGELBREKT CHURCH. INTERIOR  
*Stockholm, Sweden*

THE UNIVERSITY PRINTS  
BOSTON

FUNCTIONAL STYLE  
ARCHITECT. WAHLMAN, 1914





THREE WISE MEN  
*Museum of Fine Arts, Boston*

THE UNIVERSITY PRINTS  
BOSTON

LA FARGE. 1835—1910





AMOS • NAHUM • EZEKIEL • DANIEL

THE PROPHETS (Left Center)  
*Public Library, Boston*

THE UNIVERSITY PRINTS  
BOSTON

SARGENT. 1856—  
AMERICAN PAINTING







UNIVERSITY PRINTS, BOSTON

THE PROPHETS (RIGHT SIDE)

PUBLIC LIBRARY, BOSTON

SARGENT. 1856—1925





UNIVERSITY PRINTS, BOSTON

RAHOTEP AND NOFRET  
MUSEUM, CAIRO  
IV DYNASTY





SPHINX OF KHAFRE AND PYRAMID OF KHUFU

*Gizeh*

THE UNIVERSITY PRINTS  
BOSTON

IV DYNASTY





SEKHMET

*Metropolitan Museum of Art, New York*







Photo Am. Museum of Natural History

**STANDING BISON**  
*Font de Gaume, France*



Photo Am. Museum of Natural History

**RECUMBENT BISON**  
*Aitamiira, Spain*





UNIVERSITY PRINTS, BOSTON

HAMMURABI RECEIVING HIS LAW CODE FROM THE SUN GOD  
LOUVRE, PARIS  
1955—1913 B.C.





MADONNA OF THE HARPIES  
*Uffizi, Florence*

THE UNIVERSITY PRINTS  
BOSTON

ANDREA DEL SARTO  
1486—1531





MADONNA AND CHILD  
*Prado, Madrid*







UNIVERSITY PRINTS, BOSTON

ADORATION OF THE MAGI

UFFIZI, FLORENCE

DÜRER, 1471-1528

GERMAN SCHOOL





MADONNA AND CHILD WITH SAINTS AND DONOR  
*Gallery, Dresden*





UNIVERSITY PRINTS, BOSTON

MADONNA AND CHILD  
BARGELLO, FLORENCE

LUCA DELLA ROBBIA. 1399—1482





UNIVERSITY PRINTS, BOSTON

THE GOOD SHEPHERD  
LATERAN MUSEUM, ROME  
III CENT.







UNIVERSITY PRINTS, BOSTON

CHRIST HEALING THE SICK (THE "HUNDRED GUILDER PRINT"); ETCHING

REMBRANDT VAN RIJN. 1606—1669

DUTCH SCHOOL





UNIVERSITY PRINTS, BOSTON

AVE MARIA

CORCORAN ART GALLERY, WASHINGTON

HORATIO WALKER. 1858—1933





THE RESURRECTION  
*Chapel S. Brizio, Cathedral, Orvieto*

THE UNIVERSITY PRINTS  
BOSTON

SIGNORELLI, 1441—1523  
UMBRIAN SCHOOL?





CHRIST BETWEEN TWO THIEVES (COUP DE LANCE)  
*Museum, Antwerp*

THE UNIVERSITY PRINTS  
BOSTON

PETER PAUL RUBENS. 1577—1640  
LATE FLEMISH SCHOOL







**THE CRUCIFIXION**  
*S. Maria Antiqua, Forum, Rome*





THE CRUCIFIXION  
*Chapter House, S. Marco, Florence*

THE UNIVERSITY PRINTS  
BOSTON

FRA ANGELICO. 1387—1455  
FLORENTINE SCHOOL



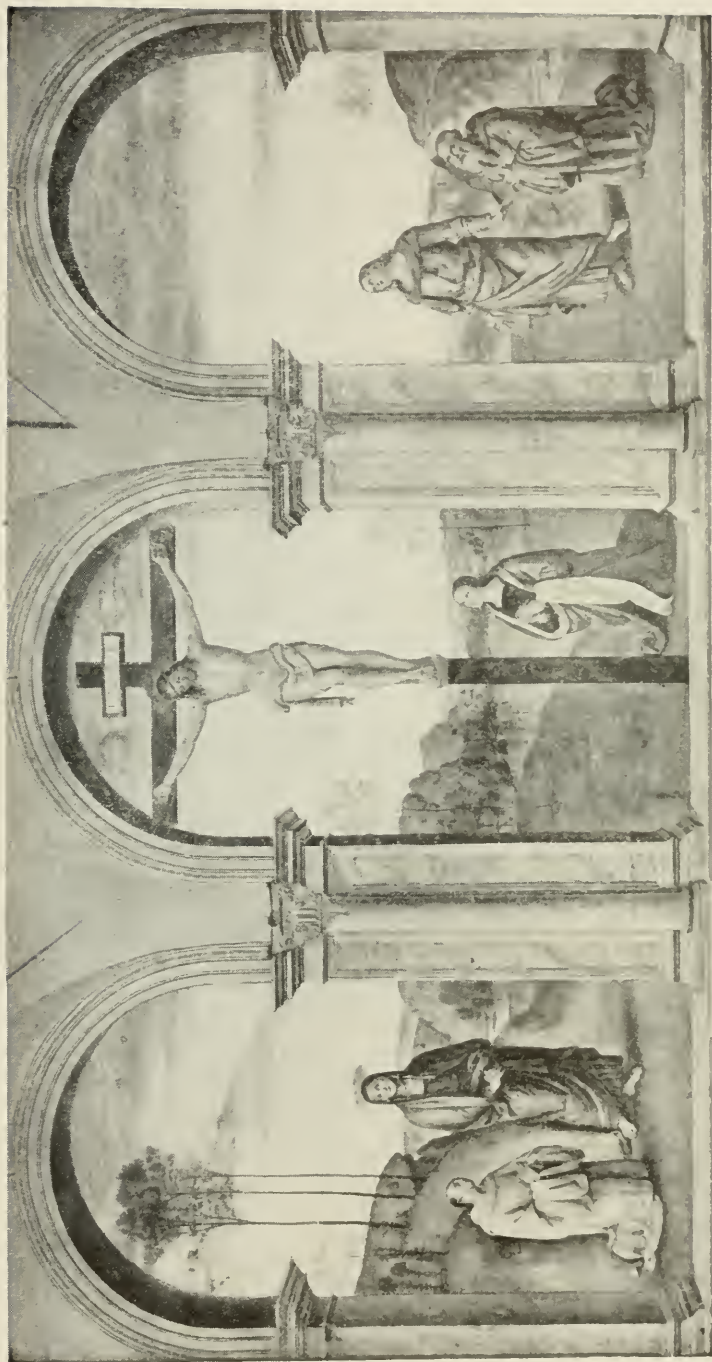


THE TRIBUTE MONEY  
*Brancacci Chapel, Carmine, Florence*

THE UNIVERSITY PRINTS  
BOSTON

MASACCIO  
1401?—1428?





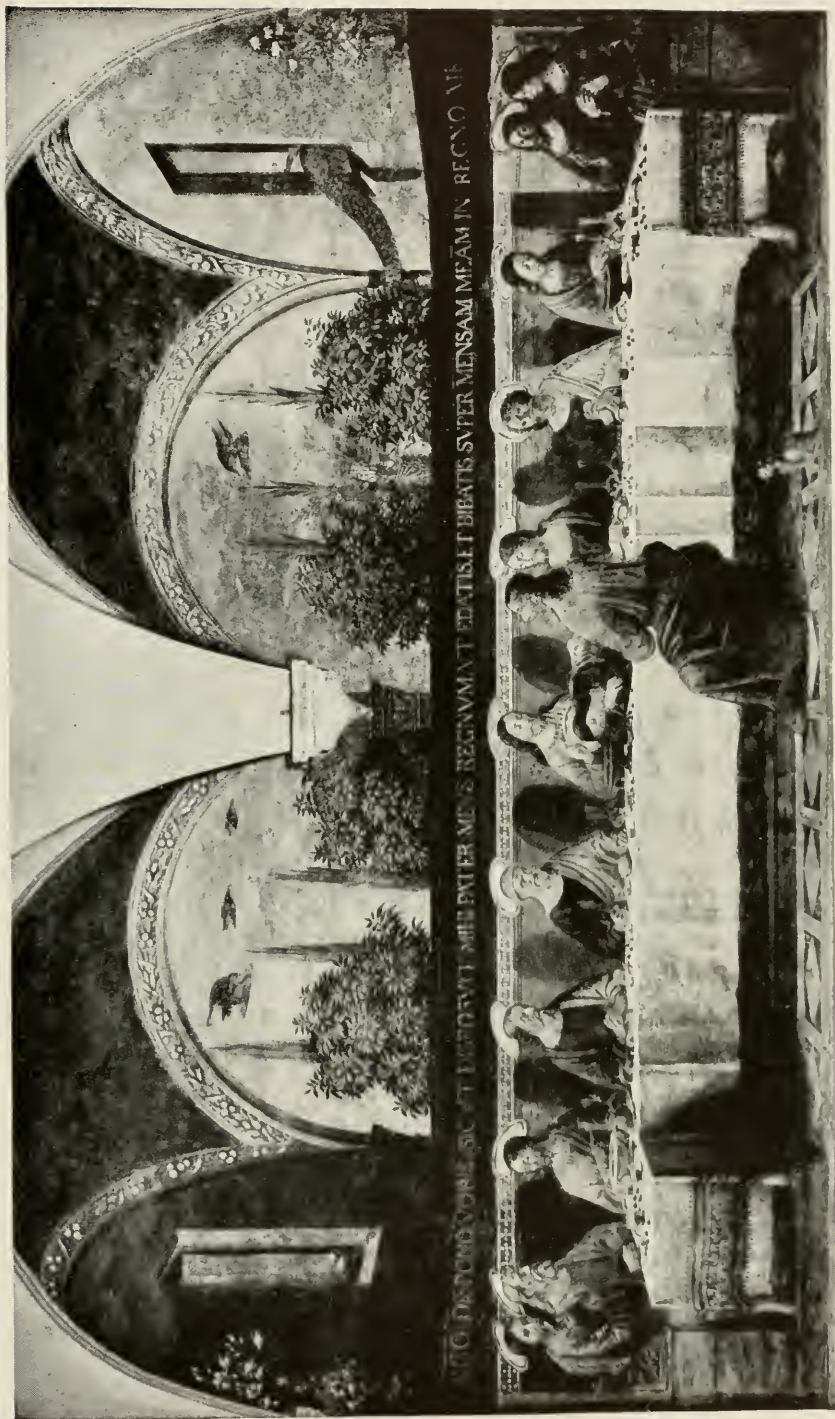
THE CRUCIFIXION  
*S. Maria Maddalena del Puzzi, Florence*

THE UNIVERSITY PRINTS  
BOSTON

PERUGINO. 1446-1524  
UMBRIAN SCHOOL







THE LAST SUPPER  
*Refectory, S. Marco, Florence*

THE UNIVERSITY PRINTS  
BOSTON

GHIRLANDAJO, 1449—1494  
FLORENTINE SCHOOL





THE DEPOSITION  
*Cathedral, Florence*





THE BEWAILING OF CHRIST  
*Chapel of the Ardent, Padua*

THE UNIVERSITY PRINTS  
BOSTON

GIOTTO. 1266?—1336  
FLORENTINE SCHOOL





DESCENT FROM THE CROSS: Triptych, Center Panel  
*Cathedral, Antwerp*

THE UNIVERSITY PRINTS  
BOSTON

PETER PAUL RUBENS. 1577—1640  
LATE FLEMISH SCHOOL







PIETÀ  
*St. Peter's, Rome*





THE VISION OF ST. FRANCIS OF ASSISI  
*Provincial Museum, Seville*

THE UNIVERSITY PRINTS  
BOSTON

MURILLO. 1618-1682





N7830 .U58

[Prints selected for use of class in

Princeton Theological Seminary-Speer Library



1 1012 00058 5804