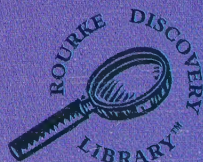


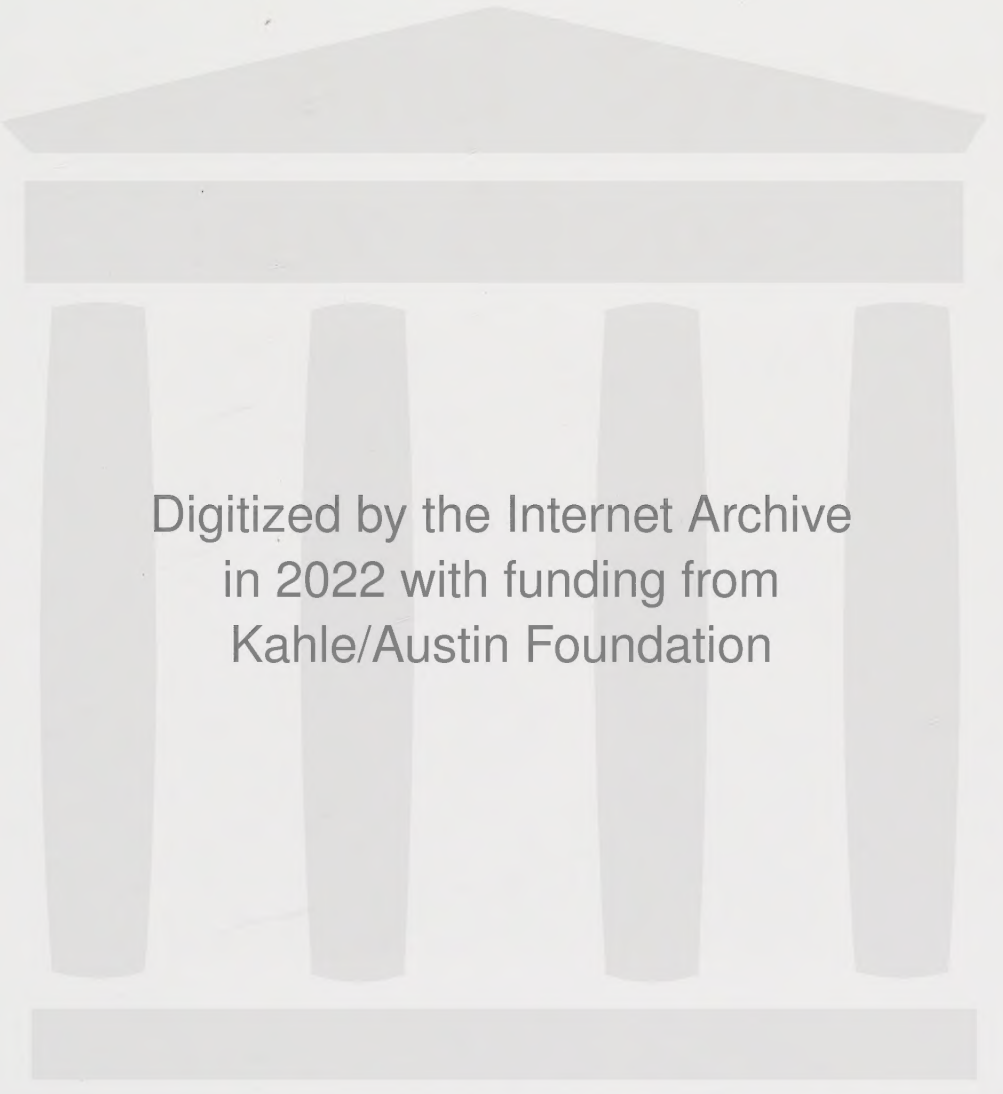
Keys and Symbols on Maps



Little World Geography



HENRY WALDINGER MEMORIAL LIBRARY



Digitized by the Internet Archive
in 2022 with funding from
Kahle/Austin Foundation

<https://archive.org/details/keyssymbolsonmap0000grev>

Keys and Symbols on Maps



Meg Greve

ROURKE PUBLISHING

Vero Beach, Florida 32964

b116545616 222 6825
912.0148
G
© 2010 Rourke Publishing LLC

All rights reserved. No part of this book may be reproduced or utilized in any form or by any means, electronic or mechanical including photocopying, recording, or by any information storage and retrieval system without permission in writing from the publisher.

www.rourkepublishing.com

PHOTO CREDITS: © Alexandr Dvorak: Title Page; © Mike Clarke: 3; © exi5: 4, 6, 14, 18, 20; © iofoto: 5, 21; © DIGlcal: 7; © Günay Mutlu: 8, 12; © jan kranendonk: 9, 23; © Windzeph: 11, 22; © Aimin Tang: 13, 22; © Gene Chutka: 15; © joannawnuk: 17; © Fernando Delvalle: 19;

Edited by Jeanne Sturm

Cover design by Nicola Stratford bdpublishing.com

Interior design by Tara Raymo

Library of Congress Cataloging-in-Publication Data

Greve, Meg.

Keys and symbols on maps / Meg Greve.

p. cm. -- (Little world geography)

Includes bibliographical references and index.

ISBN 978-1-60694-419-6 (hard cover)

ISBN 978-1-60694-535-3 (soft cover)

ISBN 978-1-60694-586-5 (bilingual)

1. Map reading--Juvenile literature. 2. Maps--Symbols--Juvenile literature.

I. Title.

GA130.G748 2010

912.01'48--dc22

2009006021

Rourke Publishing

Printed in the United States of America, North Mankato, Minnesota

062310

062210LP-B

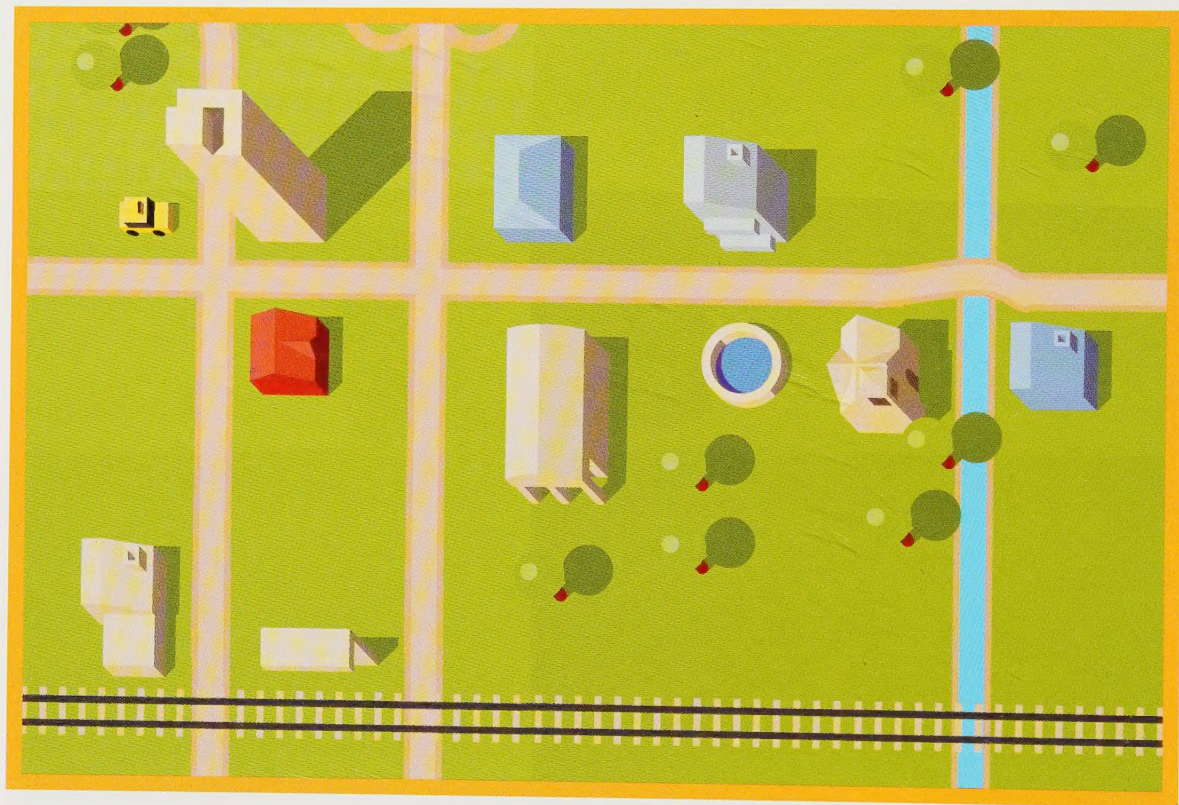
ROURKE PUBLISHING

www.rourkepublishing.com - rourke@rourkepublishing.com
Post Office Box 643328 Vero Beach, Florida 32964



Look at a **map**.

What do you see?



You see **symbols** and a **key**.



KEY

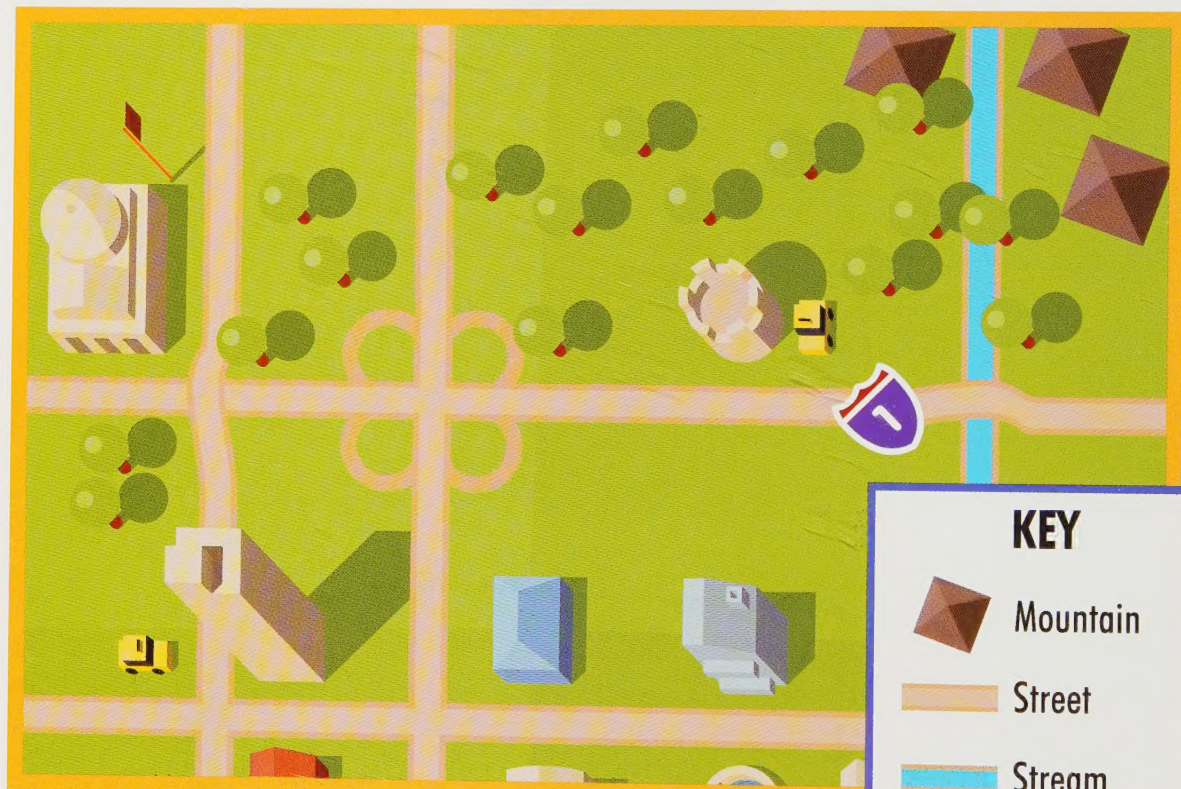
 Street

 River

 Railroad Tracks

 Parking Lot

 Houses



Symbols stand for bigger things, like **mountains**, streets, or even streams.



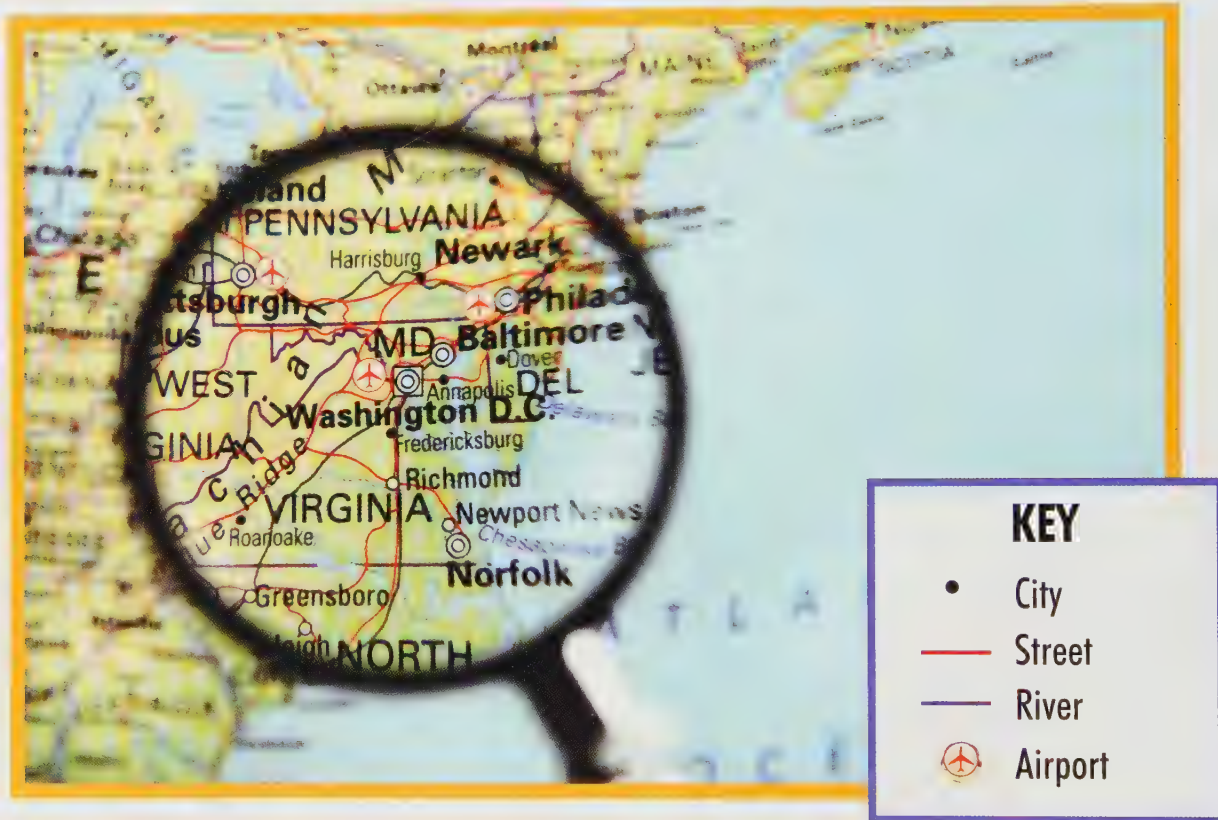


Symbols are so very small.



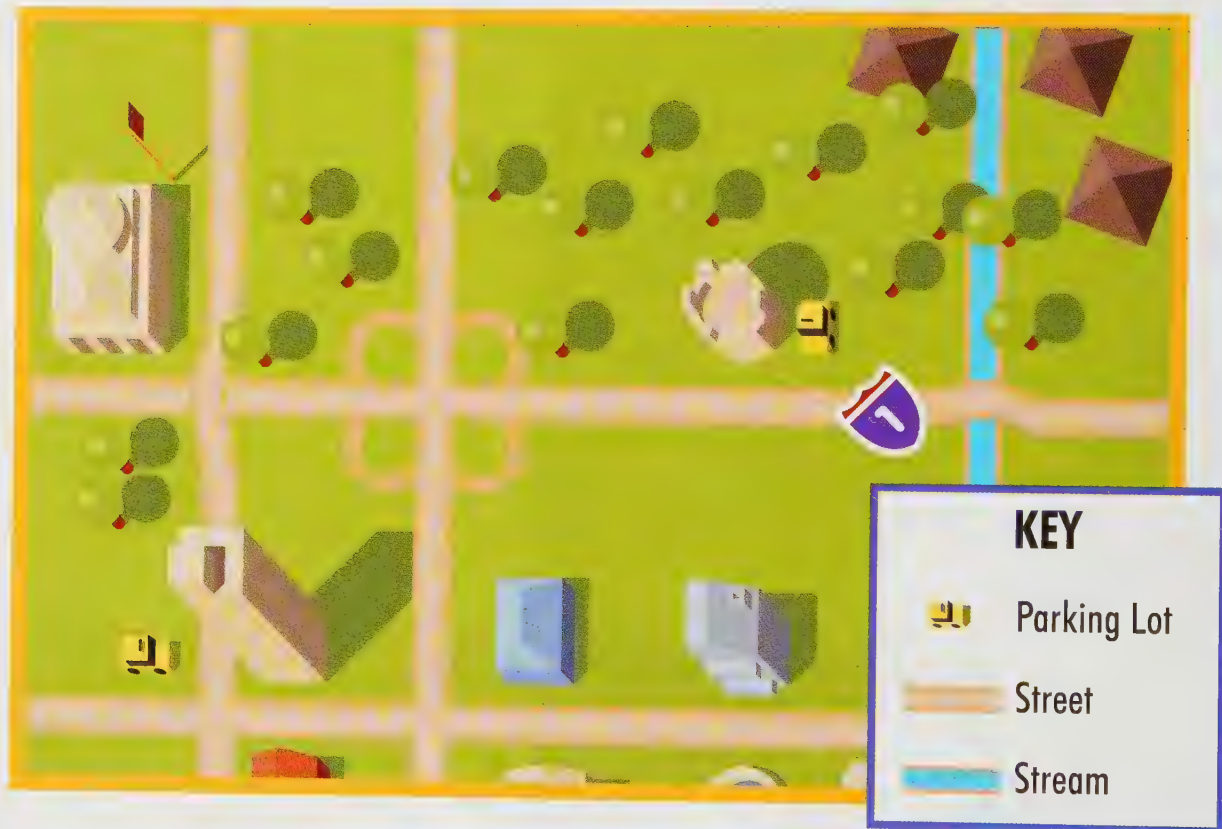
Maps and **globes** can't
show it all.





A **city** might be a little dot.





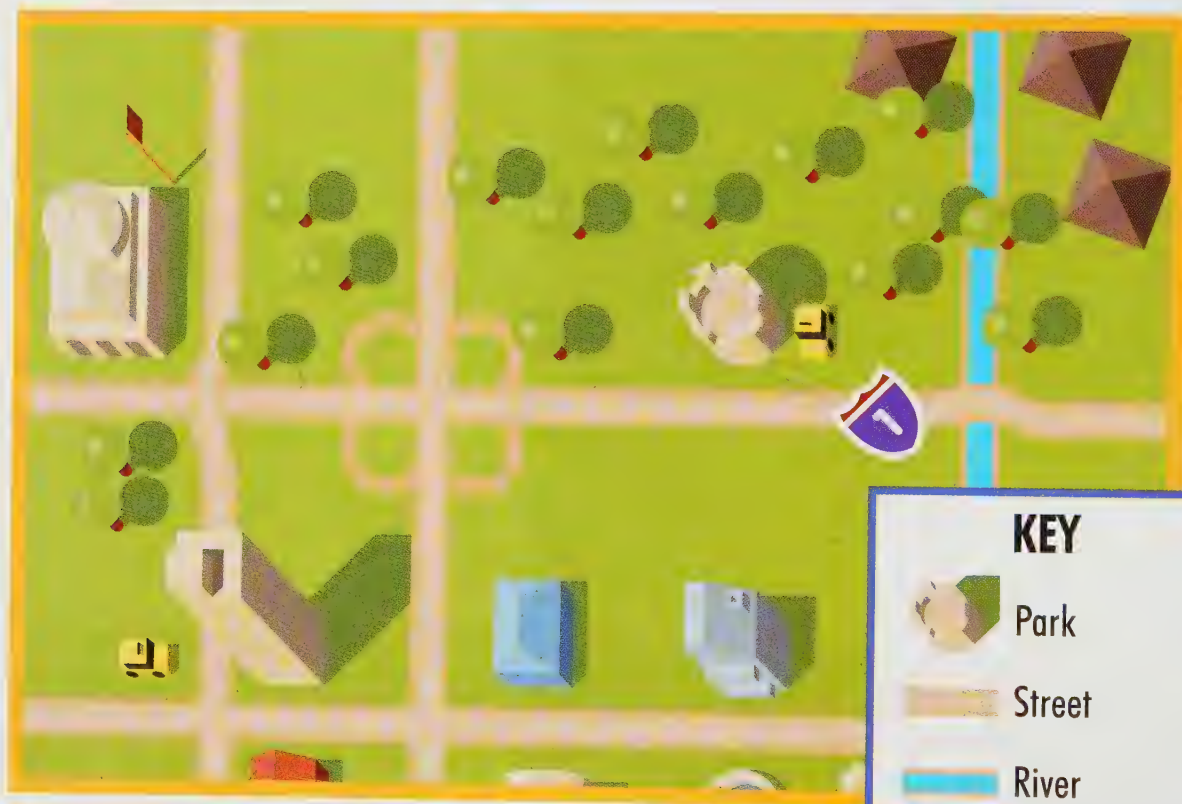
A car might mean a parking lot.


PURIFIED WATER



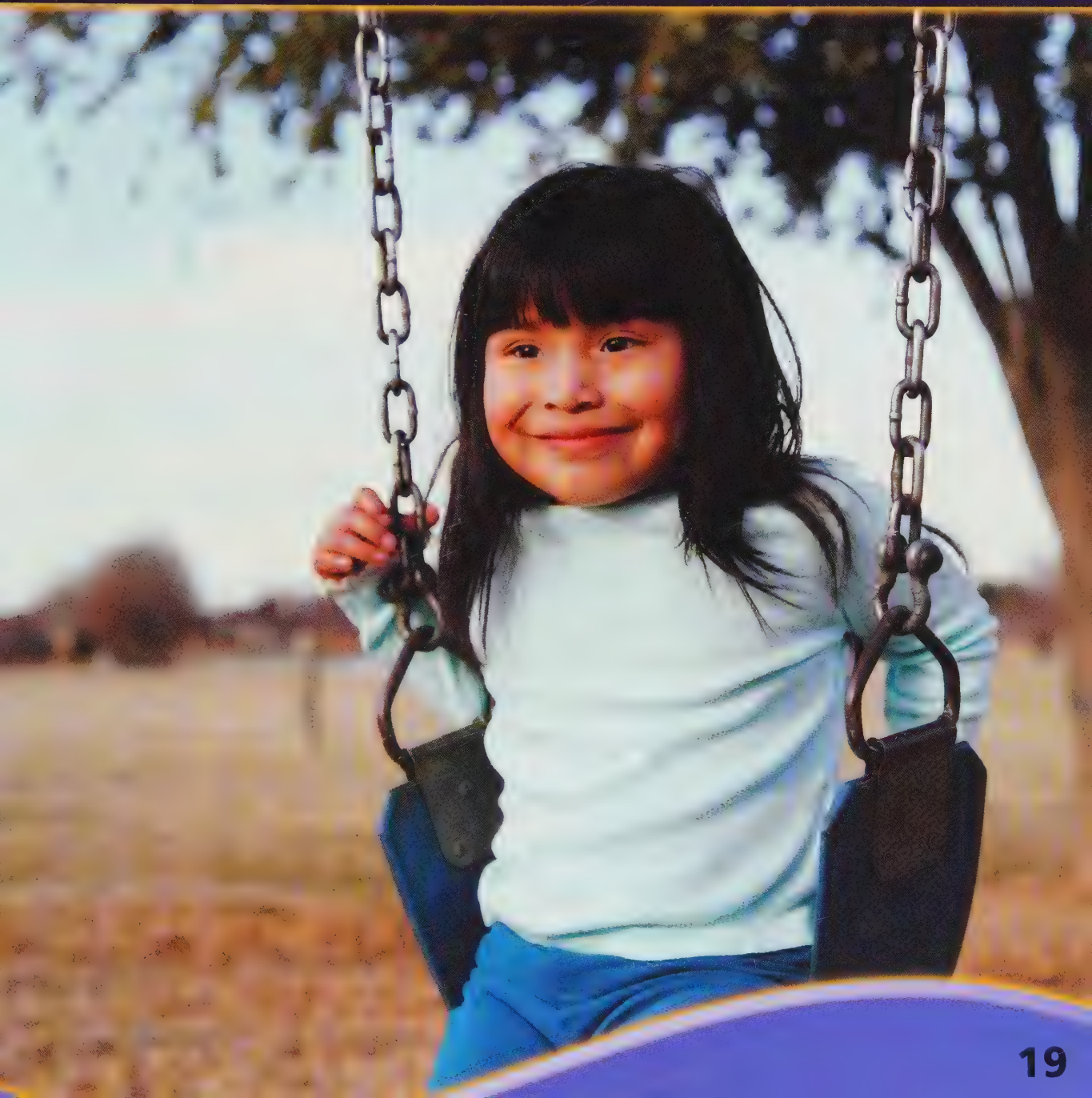
Look in the corner to find the
key, a handy tool to explain
what you see.

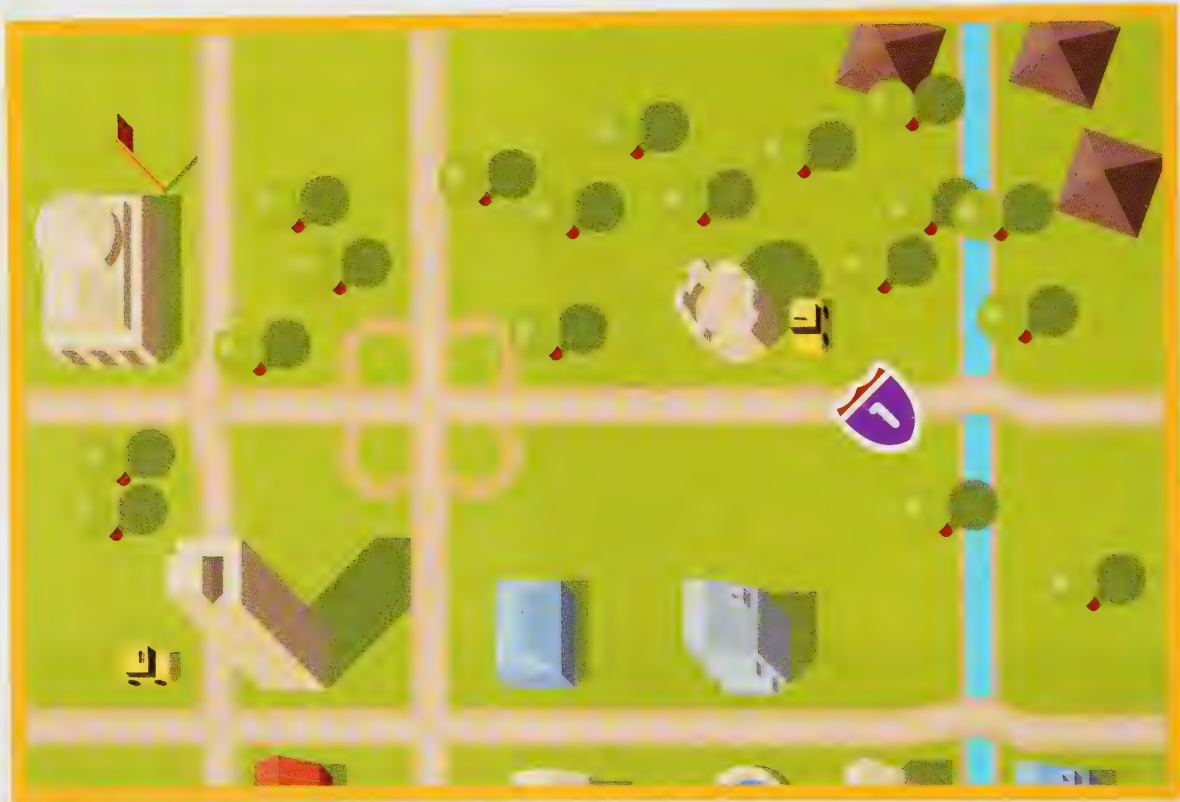




KEY	
	Park
	Street
	River

Maps can show us lots of things, like giant rivers or parks with swings.





Just use the symbols and
the key, reading maps is fun
and easy!




KEY

 Street

 River

 Park

 School

GLOSSARY



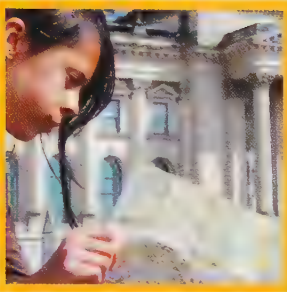
city (SIT-ee): A city is a very large town with lots of people living in it. Cities have lots of streets, buildings, and stores.



globes (GLOHBS): Globes are round spheres that show the entire Earth. Globes contain symbols and colors that stand for bigger things.



key (KEE): A key shows what the symbols stand for on a map. You can usually find the key in one of the bottom corners on a map. Sometimes a key is called a legend.



map (MAP): A map is a flat drawing of an area. There are maps of streets, towns, cities, the world, and much more. Maps contain symbols and colors, which all stand for something larger.



mountains (MOUN-tuhns): Mountains are parts of the land that are very high. Some mountains were created by glaciers or volcanoes.



symbols (SIM-buhls): Symbols are little pictures on a map that stand for bigger things. An airplane symbol stands for an airport, and blue lines show rivers.

Index

dot 12
globes 10
key 4, 16, 20
map(s) 3, 10, 18, 20
symbols 4, 6, 8, 20

Websites to Visit

www.maps4kids.com
www.fedstats.gov/kids/mapstats/
<http://kids.nationalgeographic.com/>

About the Author

Meg Greve lives in Chicago with her husband, daughter, and son. She loves to study maps and imagines traveling to new and different places.





3 6651 00222 6825

J

912.0148

1

G

Greve, Meg.

Keys and symbols on maps.

2279

549/17
5X
JUN 10 2011
JUN 10 2011

JAN 22 2011

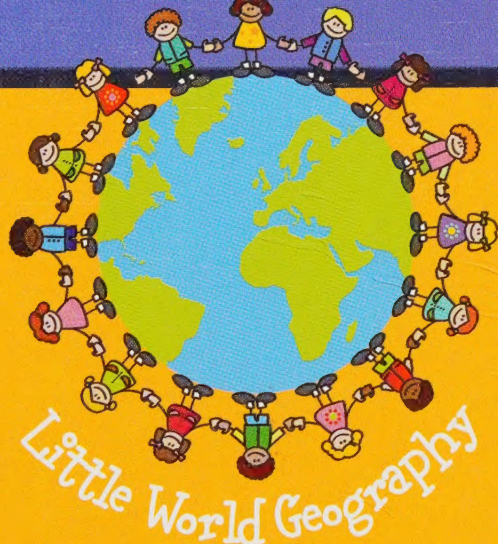
Henry Waldinger Memorial Library

60 Verona Place

Valley Stream, New York 11582

Phone: (516) 825-6422

DO NOT TOUCH THE DATE CARD



Rourke's Little World Geography series introduces emergent readers to basic geography concepts. Children learn about maps, globes, directions, and the Earth's features. Simple text supported by clear photos encourage curious readers to use geography skills while learning about the world around them.

Books In This Series Include:

Counting the Continents

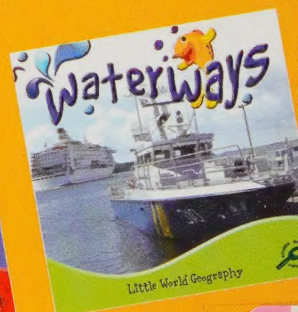
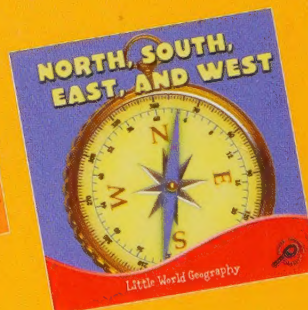
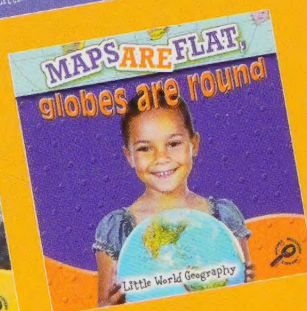
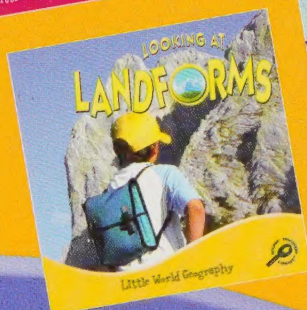
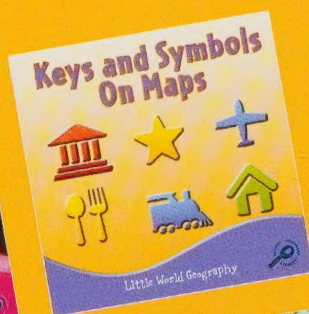
Keys and Symbols on Maps

Looking at Landforms

Maps Are Flat, Globes Are Round

North, South, East, and West

Waterways



ISBN 978-1-60694-419-6

9 0000



9 781606 944196

ROURKE PUBLISHING

www.rourkepublishing.com

P7-DJQ-375