









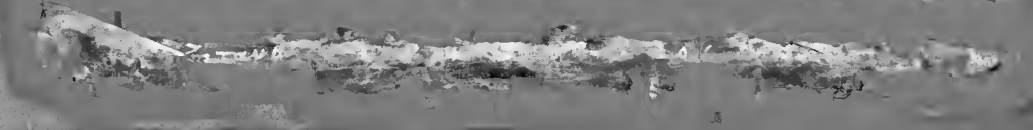




Handwritten text in a cursive script, possibly a list or a series of entries. The text is extremely faded and difficult to read, but appears to be organized in a structured manner, possibly as a table or a list of items.

Handwritten text in a cursive script, continuing from the left page. The text is extremely faded and difficult to read, but appears to be organized in a structured manner, possibly as a table or a list of items.

Fragment of an ancient Greek manuscript, showing two columns of text in a cursive script. The text is heavily faded and difficult to decipher, but appears to be organized into two distinct columns. The script is characteristic of ancient Greek cursive, with some recognizable characters like alpha, beta, gamma, and delta.



Fragment of an ancient Greek manuscript, showing two columns of text in a cursive script. The text is heavily faded and difficult to decipher, but appears to be organized into two distinct columns. The script is characteristic of ancient Greek cursive, with some recognizable characters like alpha, beta, gamma, and delta.





Handwritten text in a cursive script, likely a historical document or manuscript. The text is arranged in approximately 15 lines, though it is significantly faded and difficult to decipher. It appears to be a formal or legal document.

Handwritten text in a cursive script, continuing from the left page. It is also significantly faded and difficult to read. The text is arranged in approximately 15 lines.

Handwritten text in a cursive script, continuing from the top page. It is significantly faded and difficult to read. The text is arranged in approximately 15 lines.

Handwritten text in a cursive script, continuing from the top page. It is significantly faded and difficult to read. The text is arranged in approximately 15 lines.



Handwritten text in a medieval script, likely Latin, occupying the upper left portion of the page. The text is dense and appears to be a continuous passage.

Handwritten text in a medieval script, likely Latin, occupying the lower left portion of the page. The text is dense and appears to be a continuous passage.

Handwritten text in a medieval script, likely Latin, occupying the upper right portion of the page. The text is dense and appears to be a continuous passage.



Handwritten text in a medieval script, likely Latin, occupying the middle right portion of the page. The text is dense and appears to be a continuous passage.

Handwritten text in a medieval script, likely Latin, occupying the lower right portion of the page. The text is dense and appears to be a continuous passage.

Handwritten text in a cursive script, likely a medieval manuscript. The text is arranged in approximately 15 lines, though many are heavily obscured by dirt and fading. Some legible fragments include "et", "in", and "per".



Handwritten text in a cursive script, continuing from the left column. The text is arranged in approximately 15 lines, with significant fading and some illegible characters. Some legible fragments include "et", "in", and "per".

Handwritten text in a cursive script, continuing from the top left column. The text is arranged in approximately 15 lines, with significant fading and some illegible characters. Some legible fragments include "et", "in", and "per".

Handwritten text in a cursive script, continuing from the top right column. The text is arranged in approximately 15 lines, with significant fading and some illegible characters. Some legible fragments include "et", "in", and "per".





Handwritten text in a cursive script, likely a medieval manuscript. The text is arranged in several lines, with some words appearing to be in a different script or dialect. The ink is dark and the parchment shows signs of age and wear.

Handwritten text in a cursive script, continuing from the previous block. The text is arranged in several lines, with some words appearing to be in a different script or dialect. The ink is dark and the parchment shows signs of age and wear.

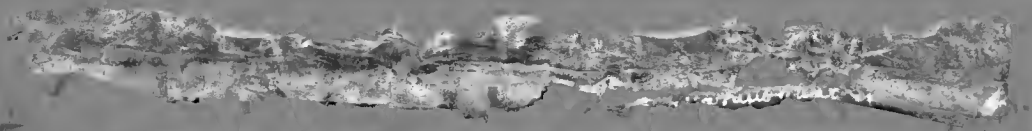
Handwritten text in a cursive script, continuing from the previous block. The text is arranged in several lines, with some words appearing to be in a different script or dialect. The ink is dark and the parchment shows signs of age and wear.

Handwritten text in a cursive script, likely a medieval manuscript. The text is arranged in several lines, with some words appearing to be in a different script or dialect. The ink is dark and the parchment shows signs of age and wear.

Handwritten text in a cursive script, continuing from the previous block. The text is arranged in several lines, with some words appearing to be in a different script or dialect. The ink is dark and the parchment shows signs of age and wear.

Fragment of ancient Greek text, likely from a papyrus scroll. The text is arranged in approximately 15 horizontal lines. The script is a cursive form of ancient Greek, with some characters appearing to be in a different dialect or script. The fragment is heavily damaged and stained, with significant portions of the text obscured by dark, irregular marks.

Fragment of ancient Greek text, likely from a papyrus scroll. The text is arranged in approximately 15 horizontal lines. The script is a cursive form of ancient Greek, with some characters appearing to be in a different dialect or script. The fragment is heavily damaged and stained, with significant portions of the text obscured by dark, irregular marks.



Fragment of ancient Greek text, likely from a papyrus scroll. The text is arranged in approximately 15 horizontal lines. The script is a cursive form of ancient Greek, with some characters appearing to be in a different dialect or script. The fragment is heavily damaged and stained, with significant portions of the text obscured by dark, irregular marks.

Fragment of ancient Greek text, likely from a papyrus scroll. The text is arranged in approximately 15 horizontal lines. The script is a cursive form of ancient Greek, with some characters appearing to be in a different dialect or script. The fragment is heavily damaged and stained, with significant portions of the text obscured by dark, irregular marks.



Handwritten text in a cursive script, likely a manuscript or letter. The text is arranged in several lines and appears to be a formal or official document. The ink is dark and the paper shows signs of age and wear.

Handwritten text in a cursive script, continuing from the left page. It includes a large, decorative initial letter 'T' at the beginning of a section. The text is dense and fills most of the right page.





Handwritten text in a cursive script, likely a medieval manuscript. The text is arranged in approximately 25 horizontal lines. The ink is dark and the parchment shows signs of age and wear. The script is dense and difficult to decipher due to the image quality.

Handwritten text in a cursive script, likely a medieval manuscript. The text is arranged in approximately 25 horizontal lines. A prominent circular mark or seal is visible in the middle of the page, overlapping the text. The ink is dark and the parchment shows signs of age and wear.

Handwritten text in a cursive script, likely a historical document or manuscript. The text is arranged in several columns and is significantly faded and obscured by surface wear and tear.

Handwritten text in a cursive script, likely a historical document or manuscript. The text is arranged in several columns and is significantly faded and obscured by surface wear and tear.

Handwritten text in a cursive script, likely a historical document or manuscript. The text is arranged in several columns and is significantly faded and obscured by surface wear and tear.

Handwritten text in a cursive script, likely a historical document or manuscript. The text is arranged in several columns and is significantly faded and obscured by surface wear and tear.

100

101

102

103

104

105

100

Handwritten text in a cursive script, likely a medieval manuscript. The text is arranged in approximately 20 lines, though many are heavily obscured by dark ink smudges and bleed-through from the reverse side of the page. The legible portions appear to be a continuous block of text.

Handwritten text in a cursive script, likely a medieval manuscript. The text is arranged in approximately 20 lines, though many are heavily obscured by dark ink smudges and bleed-through from the reverse side of the page. The legible portions appear to be a continuous block of text.

Handwritten text in a cursive script, likely a medieval manuscript. The text is arranged in approximately 20 lines, though many are heavily obscured by dark ink smudges and bleed-through from the reverse side of the page. The legible portions appear to be a continuous block of text.

Handwritten text in a cursive script, likely a medieval manuscript. The text is arranged in approximately 20 lines, though many are heavily obscured by dark ink smudges and bleed-through from the reverse side of the page. The legible portions appear to be a continuous block of text.

Handwritten text in a cursive script, likely a historical document or letter. The text is arranged in approximately 15 lines, though it is significantly faded and difficult to decipher. It appears to be a formal or semi-formal communication.

Handwritten text in a cursive script, continuing from the left page. It is also heavily faded and illegible. The script is consistent with the text on the left page, suggesting a single document spread across two pages.

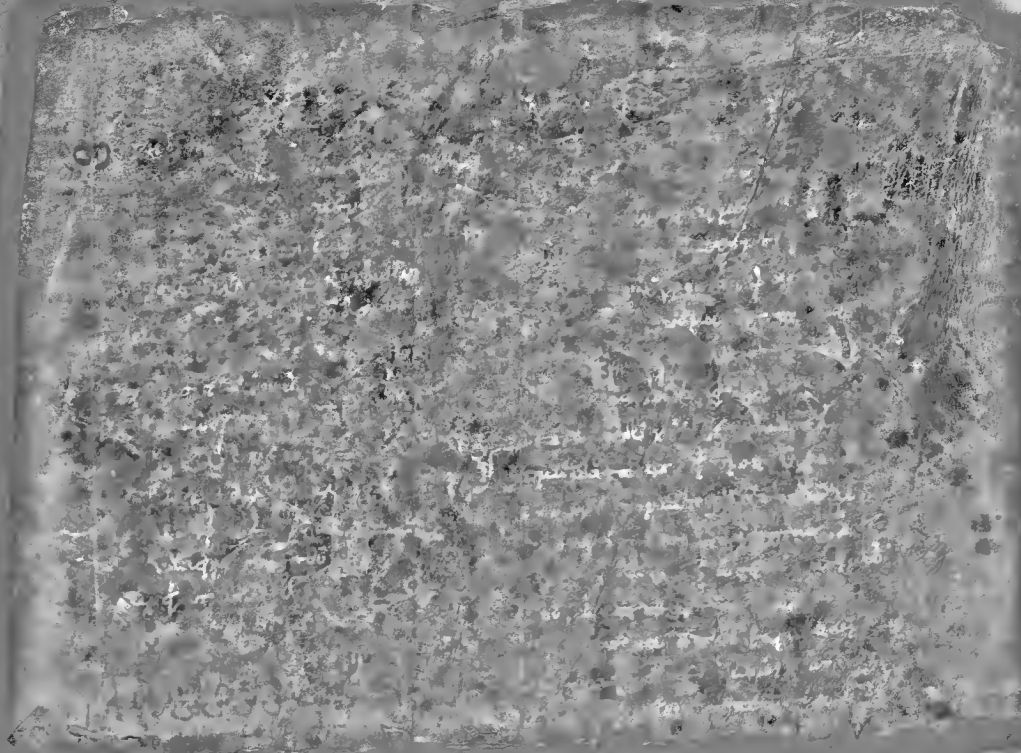
Handwritten text in a cursive script, continuing from the top page. The text is arranged in approximately 15 lines and is mostly illegible due to fading. It appears to be a continuation of the same document.

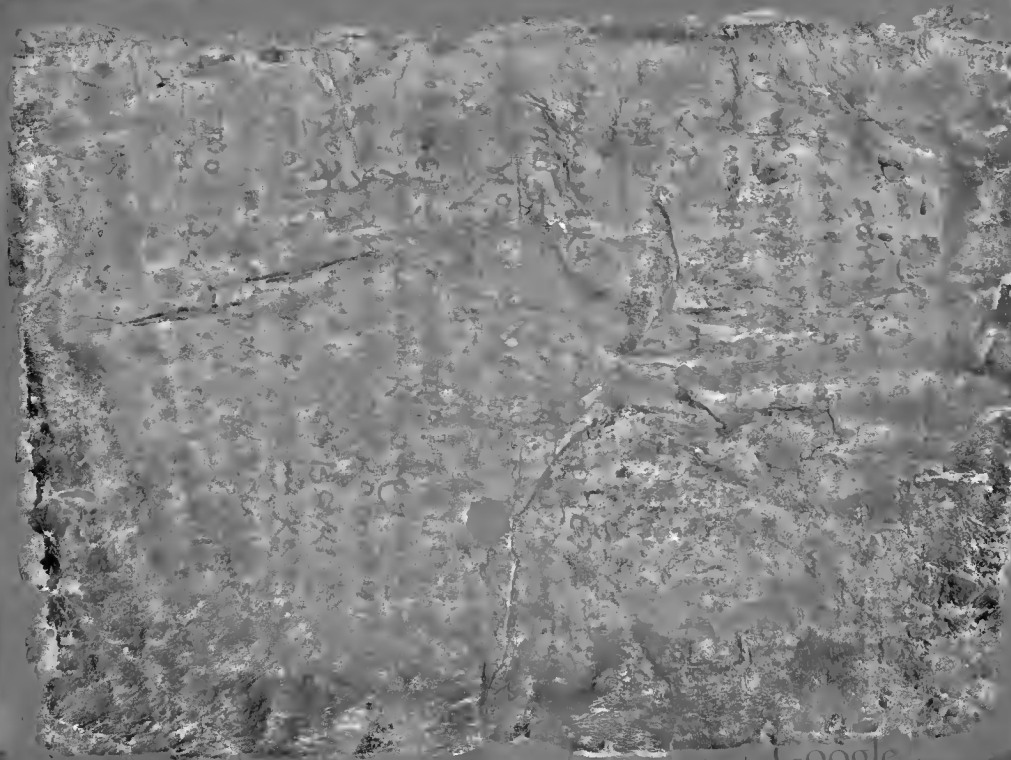
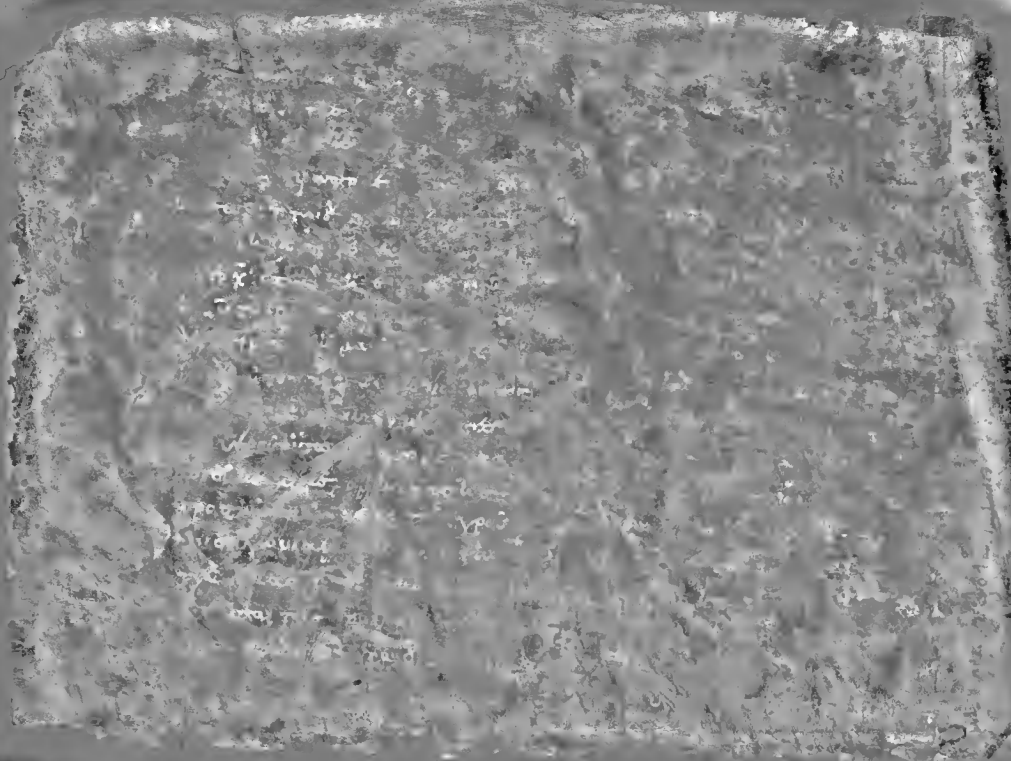
Handwritten text in a cursive script, continuing from the top page. The text is arranged in approximately 15 lines and is mostly illegible due to fading. It appears to be a continuation of the same document.







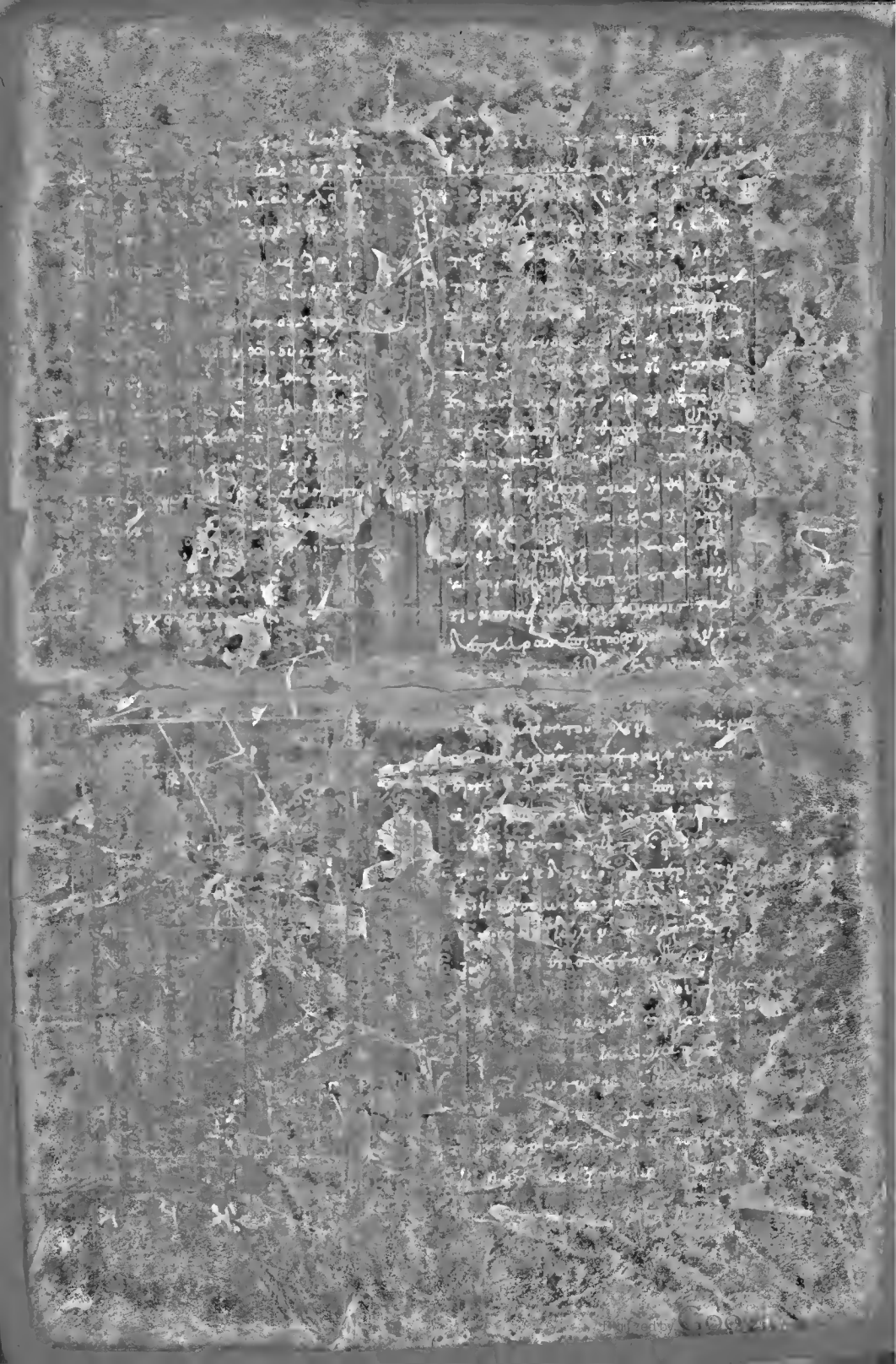




*[The page contains several columns of extremely faint, illegible text, likely bleed-through from the reverse side of the leaf. The text is too light to transcribe accurately.]*

Handwritten text in a cursive script, likely a historical document or manuscript. The text is arranged in several columns and is significantly obscured by heavy staining and fading. Some legible fragments include "1701" and "1702".

Handwritten text in a cursive script, continuing from the upper section. The text is arranged in several columns and is significantly obscured by heavy staining and fading. Some legible fragments include "1703" and "1704".



Handwritten text in a cursive script, likely a medieval manuscript. The text is arranged in approximately 15 lines, though many are obscured by ink bleed-through from the reverse side of the page. Some legible fragments include "et", "in", and "de".

Handwritten text in a cursive script, likely a medieval manuscript. The text is arranged in approximately 15 lines, though many are obscured by ink bleed-through from the reverse side of the page. Some legible fragments include "et", "in", and "de".

Handwritten text in a cursive script, likely a medieval manuscript. The text is arranged in approximately 15 lines, though many are obscured by ink bleed-through from the reverse side of the page. Some legible fragments include "et", "in", and "de".

Handwritten text in a cursive script, likely a medieval manuscript. The text is arranged in approximately 15 lines, though many are obscured by ink bleed-through from the reverse side of the page. Some legible fragments include "et", "in", and "de".



Handwritten text in Greek script, likely a header or title, located at the top of the page.

Main body of text in Greek script, arranged in columns. The text is heavily obscured by dark stains and a large irregular shape in the center, making it largely illegible.

Handwritten text in Greek script, likely a footer or concluding text, located at the bottom of the page.

Main body of text in Greek script, arranged in columns. The text is heavily obscured by dark stains and a large irregular shape in the center, making it largely illegible.

Fragment of an ancient manuscript page, likely a papyrus leaf, showing dense, handwritten text in a cursive script. The text is arranged in approximately 20 horizontal lines. The ink is dark, and the background is a light, textured surface. The fragment is irregularly shaped, with some missing sections at the top and right edges.

Fragment of an ancient manuscript page, likely a papyrus leaf, showing dense, handwritten text in a cursive script. The text is arranged in approximately 20 horizontal lines. The ink is dark, and the background is a light, textured surface. The fragment is irregularly shaped, with some missing sections at the top and right edges.



Handwritten text in a cursive script, likely a medieval manuscript. The text is arranged in several columns and is significantly obscured by dark, irregular ink smudges and stains, particularly in the lower half of the page. Some legible fragments include "et", "in", and "de".

Handwritten text in a cursive script, continuing from the left column. It is also heavily obscured by dark ink smudges and stains. Some legible fragments include "et", "in", and "de".

Handwritten text in a cursive script, continuing from the left column. It is heavily obscured by dark ink smudges and stains. Some legible fragments include "et", "in", and "de".

Handwritten text in a cursive script, continuing from the left column. It is heavily obscured by dark ink smudges and stains. Some legible fragments include "et", "in", and "de".

Handwritten text in a medieval script, likely Latin or Greek, arranged in a single column. The text is dense and appears to be a continuous passage, possibly a letter or a section of a treatise. The script is highly stylized and difficult to decipher due to the image quality.

Handwritten text in a medieval script, likely Latin or Greek, arranged in a single column. The text is dense and appears to be a continuous passage, possibly a letter or a section of a treatise. The script is highly stylized and difficult to decipher due to the image quality.

Handwritten text in a medieval script, likely Latin or Greek, arranged in a single column. The text is dense and appears to be a continuous passage, possibly a letter or a section of a treatise. The script is highly stylized and difficult to decipher due to the image quality.

Handwritten text in a medieval script, likely Latin or Greek, arranged in a single column. The text is dense and appears to be a continuous passage, possibly a letter or a section of a treatise. The script is highly stylized and difficult to decipher due to the image quality.

Handwritten text in the upper left quadrant, appearing as a list or series of entries.

Handwritten text in the upper right quadrant, appearing as a list or series of entries.

Handwritten text in the lower left quadrant, appearing as a list or series of entries.

Handwritten text in the lower right quadrant, appearing as a list or series of entries.



Handwritten text in a cursive script, likely a list or account. The text is significantly faded and difficult to decipher, but appears to contain several lines of entries.

Handwritten text in a cursive script, likely a list or account. The text is significantly faded and difficult to decipher, but appears to contain several lines of entries.

Handwritten text in a cursive script, likely a list or account. The text is significantly faded and difficult to decipher, but appears to contain several lines of entries.

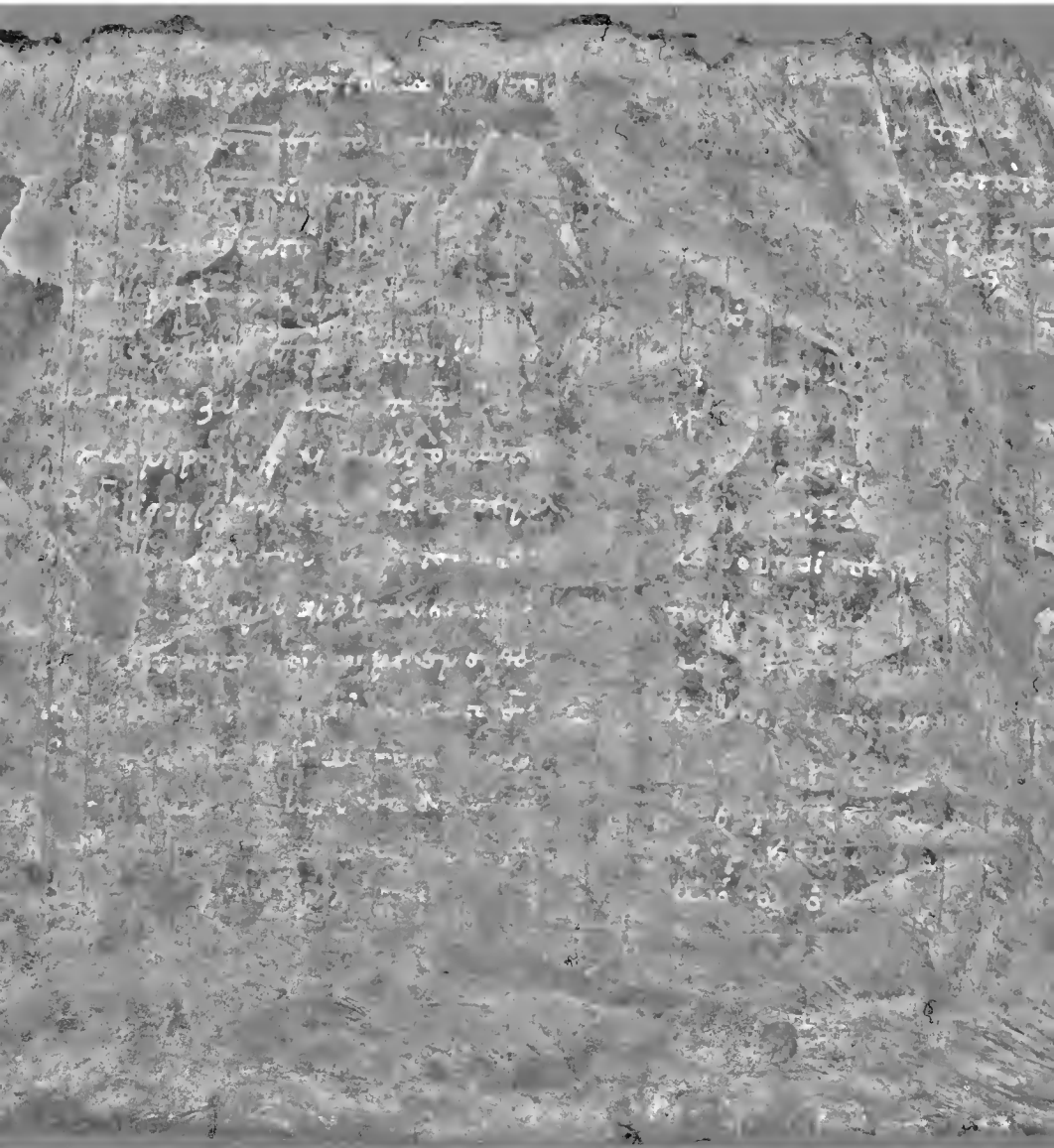
Handwritten text in a cursive script, likely a list or account. The text is significantly faded and difficult to decipher, but appears to contain several lines of entries.











Handwritten text, likely bleed-through from the reverse side of the page. The text is arranged in approximately 15 horizontal lines and is significantly obscured by dark, irregular ink smudges and stains, particularly in the center and right-hand portions of the page.

Handwritten text, likely bleed-through from the reverse side of the page. The text is arranged in approximately 15 horizontal lines and is significantly obscured by dark, irregular ink smudges and stains, particularly in the center and right-hand portions of the page.







Handwritten text in a cursive script, likely from a 17th or 18th-century manuscript. The text is arranged in several columns and is heavily obscured by dark, irregular ink blotches and smudges, particularly in the center and right-hand side. A small, faint circular mark is visible near the top center of the page.

Handwritten text in a cursive script, continuing from the top page. The text is arranged in several columns and is heavily obscured by dark, irregular ink blotches and smudges, particularly in the center and right-hand side. A small, faint circular mark is visible near the top center of the page.

Handwritten text in a cursive script, likely a historical document or manuscript. The text is arranged in approximately 15 lines across the left column.

Handwritten text in a cursive script, likely a historical document or manuscript. The text is arranged in approximately 15 lines across the right column.

Handwritten text in a cursive script, likely a historical document or manuscript. The text is arranged in approximately 15 lines across the left column of the lower page.

Handwritten text in a cursive script, likely a historical document or manuscript. The text is arranged in approximately 15 lines across the right column of the lower page.

Handwritten text in the top-left quadrant, appearing as a list or series of entries.

Handwritten text in the top-right quadrant, appearing as a list or series of entries.

Handwritten text in the bottom-left quadrant, appearing as a list or series of entries.

Handwritten text in the bottom-right quadrant, appearing as a list or series of entries.



Handwritten text in a cursive script, likely a historical document or manuscript. The text is arranged in several lines and is partially obscured by the texture of the paper and some staining.

Handwritten text in a cursive script, continuing from the left side. It appears to be a continuation of the same document or a separate entry. The handwriting is consistent with the left side.

Handwritten text in a cursive script, located in the lower-left quadrant of the page. The text is somewhat faded and partially obscured by the paper's texture.

Handwritten text in a cursive script, located in the lower-right quadrant of the page. The text is somewhat faded and partially obscured by the paper's texture.

Handwritten text in a medieval script, likely Gothic or similar, arranged in a single column on the left side of the page. The text is dense and fills most of the vertical space.

Handwritten text in a medieval script, likely Gothic or similar, arranged in a single column on the right side of the page. The text is dense and fills most of the vertical space.

Handwritten text in a medieval script, likely Gothic or similar, arranged in a single column on the left side of the page. The text is dense and fills most of the vertical space.

Handwritten text in a medieval script, likely Gothic or similar, arranged in a single column on the right side of the page. The text is dense and fills most of the vertical space.

Handwritten text in a cursive script, likely a medieval manuscript. The text is arranged in approximately 20 lines, though many are illegible due to fading and bleed-through from the reverse side of the page.

Handwritten text in a cursive script, likely a medieval manuscript. The text is arranged in approximately 20 lines, though many are illegible due to fading and bleed-through from the reverse side of the page.

Handwritten text in a cursive script, likely a medieval manuscript. The text is arranged in approximately 20 lines, though many are illegible due to fading and bleed-through from the reverse side of the page.

Handwritten text in a cursive script, likely a medieval manuscript. The text is arranged in approximately 20 lines, though many are illegible due to fading and bleed-through from the reverse side of the page.

Handwritten text in a cursive script, likely a historical document or manuscript. The text is dense and covers the upper left portion of the page.

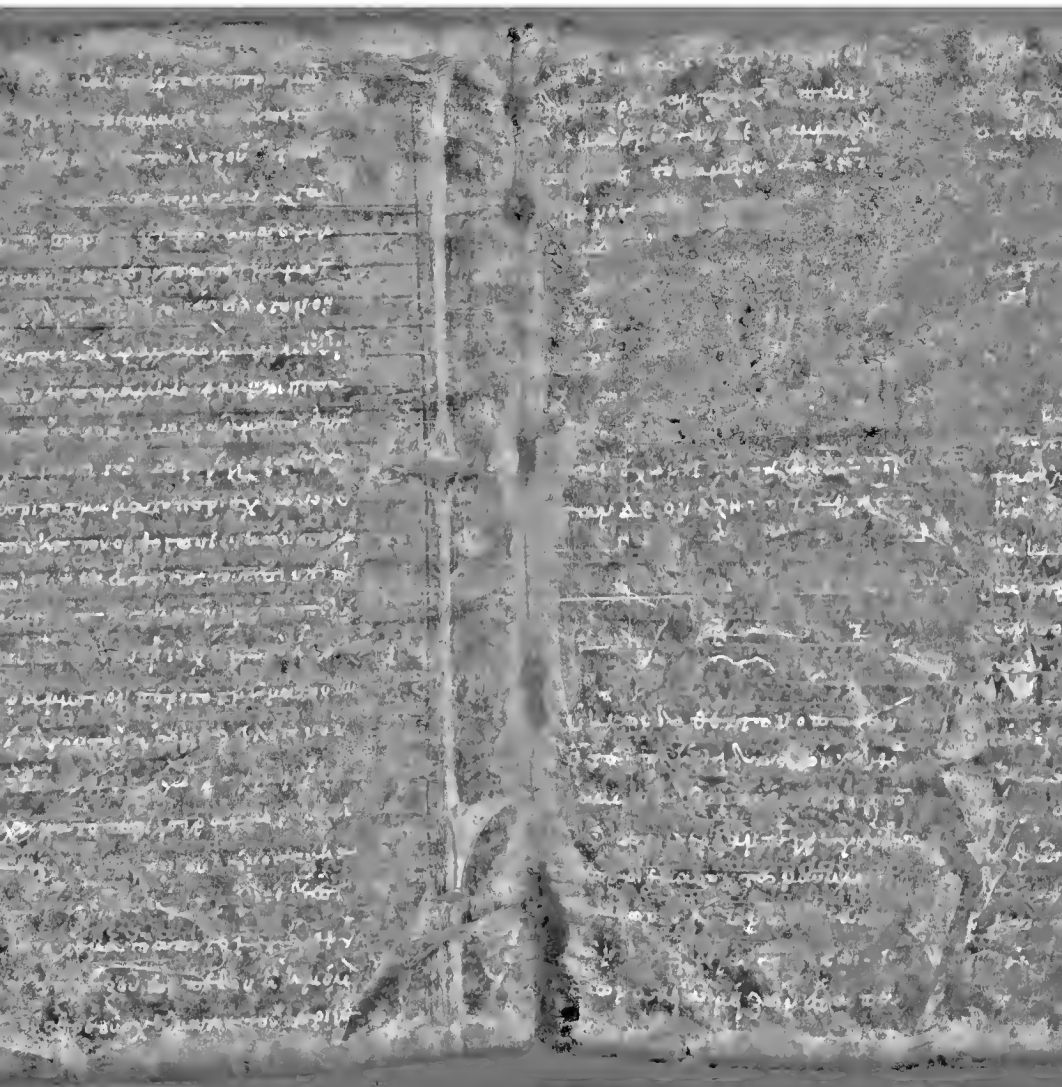
Handwritten text in a cursive script, likely a historical document or manuscript. The text is dense and covers the upper right portion of the page.

Handwritten text in a cursive script, likely a historical document or manuscript. The text is dense and covers the lower left portion of the page.

Handwritten text in a cursive script, likely a historical document or manuscript. The text is dense and covers the lower right portion of the page.

Handwritten text in two columns, top section. The script is dense and appears to be a historical or religious document. The text is significantly obscured by dark, irregular ink blotches and stains, particularly in the center and right-hand side of the page.

Handwritten text in two columns, bottom section. Similar to the top section, the text is dense but heavily obscured by dark ink blotches and stains, making it largely illegible. The layout remains consistent with two columns per section.





Handwritten text in a cursive script, likely a medieval manuscript. The text is arranged in approximately 15 lines, though many characters are obscured by the dark, mottled background of the parchment. Some legible fragments include "in", "et", "et", "et", "et", "et", "et", "et", "et", "et", "et", "et", "et", "et", "et".

Handwritten text in a cursive script, likely a medieval manuscript. The text is arranged in approximately 15 lines. Some legible fragments include "in", "et", "et", "et", "et", "et", "et", "et", "et", "et", "et", "et", "et", "et", "et".

Handwritten text in a cursive script, likely a medieval manuscript. The text is arranged in approximately 15 lines. Some legible fragments include "in", "et", "et", "et", "et", "et", "et", "et", "et", "et", "et", "et", "et", "et", "et".

Handwritten text in a cursive script, likely a medieval manuscript. The text is arranged in approximately 15 lines. Some legible fragments include "in", "et", "et", "et", "et", "et", "et", "et", "et", "et", "et", "et", "et", "et", "et".



Handwritten text in a cursive script, likely a medieval manuscript. The text is arranged in several columns and is significantly faded and obscured by dark, irregular ink blotches and smudges. The script is difficult to decipher due to the poor condition of the document.

Handwritten text, possibly a title or a section header, written vertically in a cursive script. It is partially obscured by the same dark ink blotches seen on the rest of the page.

Handwritten text in a cursive script, continuing from the left page. Like the rest of the document, it is heavily obscured by dark ink blotches and smudges, making the individual words and lines nearly illegible.

Handwritten text in a cursive script, located in the lower half of the page. The text is arranged in several columns and is heavily obscured by dark ink blotches and smudges, making it difficult to read.

Handwritten text in a cursive script, located in the lower half of the page. The text is arranged in several columns and is heavily obscured by dark ink blotches and smudges, making it difficult to read.

Handwritten text in a cursive script, likely a historical document or letter. The text is arranged in approximately 15 lines, though it is significantly obscured by ink bleed-through from the reverse side of the page. The script is dense and difficult to decipher due to the overlapping lines and the quality of the reproduction.

Handwritten text in a cursive script, continuing from the left column. It is also heavily obscured by ink bleed-through from the reverse side. The text appears to be a continuation of the same document or letter, with similar handwriting and line structure.

Handwritten text in a cursive script, located in the lower-left quadrant of the page. The text is arranged in approximately 15 lines and is similarly obscured by ink bleed-through from the reverse side. The handwriting remains consistent with the upper sections of the document.

Handwritten text in a cursive script, located in the lower-right quadrant of the page. It is arranged in approximately 15 lines and is heavily obscured by ink bleed-through from the reverse side. The text appears to be the final portion of the document or letter shown on this page.

*[The text on this page is extremely faint and illegible due to the poor condition of the manuscript. It appears to be a dense block of text, possibly in a historical or scientific context.]*



Handwritten text in a cursive script, likely a historical document or manuscript. The text is arranged in approximately 15 lines, though it is significantly obscured by dark, irregular ink smudges and stains, particularly in the lower half of the page.

Handwritten text in a cursive script, continuing from the left page. It is also heavily obscured by dark ink smudges and stains, making the individual words and lines difficult to discern. The text appears to be organized into several paragraphs.

Handwritten text in a cursive script, continuing from the left page. The text is arranged in approximately 15 lines, though it is significantly obscured by dark, irregular ink smudges and stains, particularly in the lower half of the page.

Handwritten text in a cursive script, continuing from the right page. It is also heavily obscured by dark ink smudges and stains, making the individual words and lines difficult to discern. The text appears to be organized into several paragraphs.



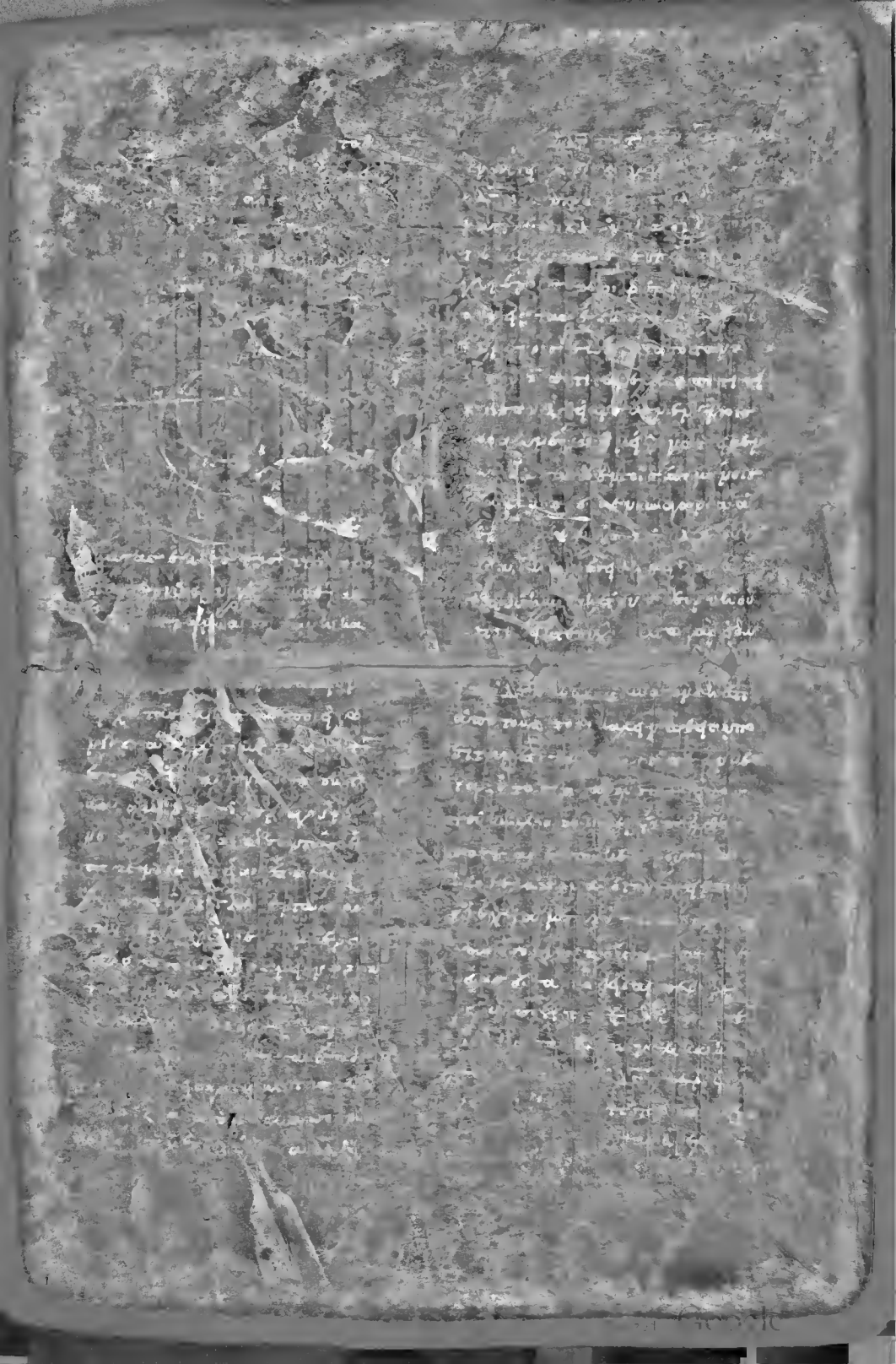
Handwritten text in a cursive script, likely a medieval manuscript. The text is arranged in several lines and is partially obscured by a large, irregular tear or hole in the parchment.

Handwritten text in a cursive script, likely a medieval manuscript. The text is arranged in several lines and is partially obscured by a large, irregular tear or hole in the parchment.

Handwritten text in a cursive script, likely a medieval manuscript. The text is arranged in several lines and is partially obscured by a large, irregular tear or hole in the parchment.

Handwritten text in a cursive script, likely a medieval manuscript. The text is arranged in several lines and is partially obscured by a large, irregular tear or hole in the parchment.

Vertical handwritten text, possibly a marginal note or a section header, located between the two main columns of text.



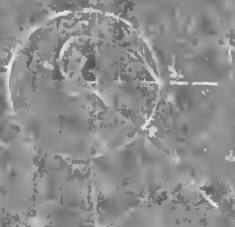


Handwritten text in a cursive script, likely a list or account. The text is heavily faded and difficult to decipher, but appears to contain several lines of entries.

Handwritten text in a cursive script, continuing the list or account. The text is heavily faded and difficult to decipher, but appears to contain several lines of entries.

Handwritten text, possibly a heading or a specific entry, located below the first column of text.

Handwritten text in a cursive script, continuing the list or account. The text is heavily faded and difficult to decipher, but appears to contain several lines of entries.



Handwritten text, possibly a heading or a specific entry, located below the second column of text.

Handwritten text in a medieval script, likely Latin, covering the upper left portion of the page. The text is dense and appears to be a continuation of a treatise or a list of items.

Handwritten text in a medieval script, likely Latin, covering the middle left portion of the page. The text is dense and appears to be a continuation of a treatise or a list of items.

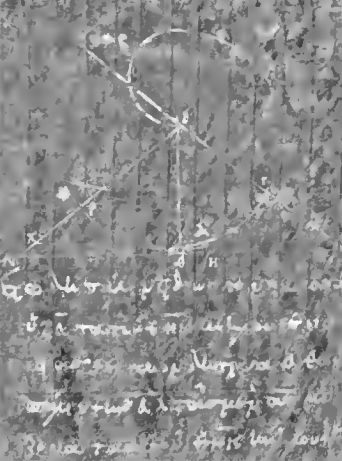


Handwritten text in a medieval script, likely Latin, covering the upper right portion of the page. The text is dense and appears to be a continuation of a treatise or a list of items.

Handwritten text in a medieval script, likely Latin, covering the middle right portion of the page. The text is dense and appears to be a continuation of a treatise or a list of items.

Handwritten text in a cursive script, likely a medieval manuscript. The text is arranged in approximately 15 lines, though some are partially obscured by the texture of the parchment. The ink is dark, and the script is dense and flowing.

Handwritten text in a cursive script, located in the upper right quadrant of the page. It appears to be a continuation of the text or a separate section, with some larger initial letters.



Handwritten text in a cursive script, located in the lower left quadrant of the page. The text is dense and follows the same style as the other text on the page.

Handwritten text in a cursive script, located in the lower right quadrant of the page. It continues the text from the upper right section.

Handwritten text in a cursive script, likely a medieval manuscript. The text is arranged in several lines, with some words appearing to be in a different script or dialect. The ink is dark and the parchment shows signs of age and wear.

Handwritten text in a cursive script, likely a medieval manuscript. The text is arranged in several lines, with some words appearing to be in a different script or dialect. The ink is dark and the parchment shows signs of age and wear.

Handwritten text in a cursive script, likely a medieval manuscript. The text is arranged in several lines, with some words appearing to be in a different script or dialect. The ink is dark and the parchment shows signs of age and wear.

Handwritten text in a cursive script, likely a medieval manuscript. The text is arranged in several lines, with some words appearing to be in a different script or dialect. The ink is dark and the parchment shows signs of age and wear.



The diagram consists of several concentric circles and lines, possibly representing a celestial model or a calendar. It is drawn with fine lines and is positioned between the two columns of text.

Handwritten text in a cursive script, likely a medieval manuscript. The text is arranged in approximately 15 lines, though many characters are obscured by ink bleed-through from the reverse side of the page. The script is dense and difficult to decipher due to the fading and overlapping of lines.

Handwritten text in a cursive script, continuing from the left column. It also consists of about 15 lines of text, with significant ink bleed-through from the back of the page. The characters are small and closely packed, typical of a medieval book's text block.

Handwritten text in a cursive script, possibly a separate section or a continuation. It is organized into roughly 15 lines. The text is very faint and heavily obscured by ink bleed-through, making it largely illegible. Some larger, possibly decorative or initial letters are visible but not clearly identifiable.

Handwritten text in a cursive script, continuing the text from the left column. It contains approximately 15 lines of text. Like the other sections, it is heavily affected by ink bleed-through from the reverse side, rendering the original text almost entirely unreadable.

Handwritten text in a cursive script, likely from a 17th-century manuscript. The text is arranged in several columns and is significantly faded and obscured by dark, irregular ink blotches and stains, particularly in the upper and right-hand portions of the page. The legible fragments appear to be Latin or French, with some words like "de" and "et" visible.

Handwritten text in a cursive script, continuing from the upper section. This section is also heavily obscured by dark ink blotches and stains, making the text largely illegible. Some faint traces of words and lines of text are visible through the noise.

Handwritten text in a cursive script, likely a medieval manuscript. The text is arranged in several columns and is partially obscured by the texture and wear of the parchment.

Handwritten text in a cursive script, likely a medieval manuscript. The text is arranged in several columns and is partially obscured by the texture and wear of the parchment.

Handwritten text in a cursive script, likely a medieval manuscript. The text is arranged in several columns and is partially obscured by the texture and wear of the parchment.

Handwritten text in a cursive script, likely a medieval manuscript. The text is arranged in several columns and is partially obscured by the texture and wear of the parchment.



*[The page contains two columns of extremely faint, illegible text, likely a manuscript or printed document. The text is too faded to be transcribed accurately.]*



Handwritten text in a cursive script, likely a medieval manuscript. The text is arranged in approximately 15 lines. The ink is dark and the parchment shows signs of age and wear.

Handwritten text in a cursive script, likely a medieval manuscript. The text is arranged in approximately 15 lines. The ink is dark and the parchment shows signs of age and wear.

Handwritten text in a cursive script, likely a medieval manuscript. The text is arranged in approximately 15 lines. The ink is dark and the parchment shows signs of age and wear.

Handwritten text in a cursive script, likely a medieval manuscript. The text is arranged in approximately 15 lines. The ink is dark and the parchment shows signs of age and wear.

Handwritten text in a cursive script, likely a historical document or letter. The text is dense and covers the upper left portion of the page.

Handwritten text in a cursive script, likely a historical document or letter. The text is dense and covers the upper right portion of the page.

Handwritten text in a cursive script, likely a historical document or letter. The text is dense and covers the lower left portion of the page.

Handwritten text in a cursive script, likely a historical document or letter. The text is dense and covers the lower right portion of the page.

Handwritten text in a cursive script, likely a historical document or manuscript. The text is arranged in several columns and is heavily obscured by dark, irregular ink smudges and stains, particularly in the center and right-hand side. The legible fragments include words such as "1770", "1771", "1772", "1773", "1774", "1775", "1776", "1777", "1778", "1779", "1780", "1781", "1782", "1783", "1784", "1785", "1786", "1787", "1788", "1789", "1790", "1791", "1792", "1793", "1794", "1795", "1796", "1797", "1798", "1799", "1800", "1801", "1802", "1803", "1804", "1805", "1806", "1807", "1808", "1809", "1810", "1811", "1812", "1813", "1814", "1815", "1816", "1817", "1818", "1819", "1820", "1821", "1822", "1823", "1824", "1825", "1826", "1827", "1828", "1829", "1830", "1831", "1832", "1833", "1834", "1835", "1836", "1837", "1838", "1839", "1840", "1841", "1842", "1843", "1844", "1845", "1846", "1847", "1848", "1849", "1850", "1851", "1852", "1853", "1854", "1855", "1856", "1857", "1858", "1859", "1860", "1861", "1862", "1863", "1864", "1865", "1866", "1867", "1868", "1869", "1870", "1871", "1872", "1873", "1874", "1875", "1876", "1877", "1878", "1879", "1880", "1881", "1882", "1883", "1884", "1885", "1886", "1887", "1888", "1889", "1890", "1891", "1892", "1893", "1894", "1895", "1896", "1897", "1898", "1899", "1900".

Handwritten text in a cursive script, likely a historical document or manuscript. The text is arranged in several columns and is heavily obscured by dark, irregular ink smudges and stains, particularly in the center and right-hand side. The legible fragments include words such as "1770", "1771", "1772", "1773", "1774", "1775", "1776", "1777", "1778", "1779", "1780", "1781", "1782", "1783", "1784", "1785", "1786", "1787", "1788", "1789", "1790", "1791", "1792", "1793", "1794", "1795", "1796", "1797", "1798", "1799", "1800", "1801", "1802", "1803", "1804", "1805", "1806", "1807", "1808", "1809", "1810", "1811", "1812", "1813", "1814", "1815", "1816", "1817", "1818", "1819", "1820", "1821", "1822", "1823", "1824", "1825", "1826", "1827", "1828", "1829", "1830", "1831", "1832", "1833", "1834", "1835", "1836", "1837", "1838", "1839", "1840", "1841", "1842", "1843", "1844", "1845", "1846", "1847", "1848", "1849", "1850", "1851", "1852", "1853", "1854", "1855", "1856", "1857", "1858", "1859", "1860", "1861", "1862", "1863", "1864", "1865", "1866", "1867", "1868", "1869", "1870", "1871", "1872", "1873", "1874", "1875", "1876", "1877", "1878", "1879", "1880", "1881", "1882", "1883", "1884", "1885", "1886", "1887", "1888", "1889", "1890", "1891", "1892", "1893", "1894", "1895", "1896", "1897", "1898", "1899", "1900".

Handwritten text in a cursive script, likely a historical document or letter. The text is arranged in approximately 15 lines, though many characters are obscured by ink bleed-through from the reverse side of the page. The script is dense and difficult to decipher due to the overlapping lines and the quality of the reproduction.

Handwritten text in a cursive script, continuing from the left page. This section contains approximately 10 lines of text, also heavily obscured by bleed-through from the reverse side. The handwriting is consistent with the first page, suggesting a single author or scribe.

Handwritten text in a cursive script, continuing from the top page. This section contains approximately 10 lines of text, with significant bleed-through from the reverse side. The script remains consistent with the previous pages.

Handwritten text in a cursive script, continuing from the top page. This section contains approximately 10 lines of text, with significant bleed-through from the reverse side. The script remains consistent with the previous pages.



Fragment of an ancient Greek papyrus scroll with handwritten text in two columns. The script is a cursive hand, likely from the Hellenistic or Roman periods. The text is heavily faded and difficult to decipher, but some words and phrases are visible, such as "ΕΙΣ ΤΟΝ ΚΑΙΝΟΝ ΚΑΙΝΟΝ" and "ΕΙΣ ΤΟΝ ΚΑΙΝΟΝ ΚΑΙΝΟΝ".

Handwritten text in a cursive script, likely a historical document or manuscript. The text is arranged in approximately 15 lines across the left column.

Handwritten text in a cursive script, continuing from the top section. It is arranged in approximately 15 lines across the left column.

Handwritten text in a cursive script, likely a historical document or manuscript. The text is arranged in approximately 15 lines across the right column.

Handwritten text in a cursive script, continuing from the top section. It is arranged in approximately 15 lines across the right column.

Faint, illegible handwritten text in a column on the left side of the page.

Faint, illegible handwritten text in a column on the right side of the page.

Faint, illegible handwritten text in a column on the left side of the lower section.

Faint, illegible handwritten text in a column on the right side of the lower section.



*[Faded, illegible text, likely a page from an ancient manuscript with significant damage and bleed-through.]*



Handwritten text in a cursive script, likely from a medieval manuscript. The text is arranged in approximately 15 lines and is partially obscured by a large, irregular stain on the left side of the page.

Handwritten text in a cursive script, likely from a medieval manuscript. The text is arranged in approximately 15 lines and is partially obscured by a large, irregular stain on the left side of the page.

Handwritten text in a cursive script, likely from a medieval manuscript. The text is arranged in approximately 15 lines and is partially obscured by a large, irregular stain on the left side of the page.

Handwritten text in a cursive script, likely from a medieval manuscript. The text is arranged in approximately 15 lines and is partially obscured by a large, irregular stain on the left side of the page.



Fragment of text on the left side of the page, showing several lines of cursive script. The text is partially obscured by damage and staining.

Fragment of text on the right side of the page, showing several lines of cursive script. The text is partially obscured by damage and staining.

Fragment of text on the left side of the page, showing several lines of cursive script. The text is partially obscured by damage and staining.

Fragment of text on the right side of the page, showing several lines of cursive script. The text is partially obscured by damage and staining.

Fragment of an ancient papyrus scroll with several columns of handwritten text in a cursive script. The text is heavily obscured by dark, irregular ink blotches and stains, particularly in the upper and middle sections. Some faint characters and words are visible, but they are largely illegible due to the damage and fading.

Fragment of an ancient papyrus scroll, similar to the one above, showing multiple columns of handwritten text. The script is consistent with the upper fragment. This section is also significantly obscured by dark ink blotches and stains, especially in the lower half. The overall appearance is that of a well-preserved but heavily damaged historical document.

Handwritten text in a cursive script, likely a religious or historical document. The text is arranged in approximately 15 lines across the upper left quadrant of the page.

Handwritten text in a cursive script, continuing from the left page or as a separate entry. It is arranged in approximately 15 lines across the upper right quadrant of the page.

Handwritten text in a cursive script, located in the lower left quadrant of the page. It appears to be a continuation of the text from the upper section.

Handwritten text in a cursive script, located in the lower right quadrant of the page. It appears to be a continuation of the text from the upper section.



Handwritten text in a medieval script, likely Latin or Gothic, covering the upper left portion of the page. The text is dense and appears to be part of a larger document or manuscript.

Handwritten text in a medieval script, likely Latin or Gothic, covering the upper right portion of the page. The text is dense and appears to be part of a larger document or manuscript.

Handwritten text in a medieval script, likely Latin or Gothic, covering the lower left portion of the page. The text is dense and appears to be part of a larger document or manuscript.

Handwritten text in a medieval script, likely Latin or Gothic, covering the lower right portion of the page. The text is dense and appears to be part of a larger document or manuscript.

Handwritten text in a cursive script, likely a medieval manuscript. The text is arranged in approximately 15 lines, with some lines starting with large initial letters. The ink is dark and the parchment shows signs of age and wear.

Handwritten text in a cursive script, continuing from the top section. It consists of about 15 lines of text, with some lines starting with large initial letters. The script is consistent with the top section.

Handwritten text in a cursive script, likely a medieval manuscript. The text is arranged in approximately 15 lines, with some lines starting with large initial letters. The ink is dark and the parchment shows signs of age and wear.

Handwritten text in a cursive script, continuing from the top section. It consists of about 15 lines of text, with some lines starting with large initial letters. The script is consistent with the top section.



Handwritten text in a cursive script, likely a historical document or manuscript. The text is arranged in approximately 15 lines across the left page.

Handwritten text in a cursive script, likely a historical document or manuscript. The text is arranged in approximately 15 lines across the right page.

Handwritten text in a cursive script, likely a historical document or manuscript. The text is arranged in approximately 15 lines across the left page.

Handwritten text in a cursive script, likely a historical document or manuscript. The text is arranged in approximately 15 lines across the right page.

Handwritten text in a cursive script, likely a historical document or manuscript. The text is dense and spans the upper left portion of the page.

Handwritten text in a cursive script, likely a historical document or manuscript. The text is dense and spans the upper right portion of the page.

Handwritten text in a cursive script, likely a historical document or manuscript. The text is dense and spans the lower left portion of the page.

Handwritten text in a cursive script, likely a historical document or manuscript. The text is dense and spans the lower right portion of the page.

Handwritten text in a cursive script, likely a historical document or manuscript. The text is arranged in approximately 15 lines, though it is significantly faded and difficult to decipher. Some words are partially legible, such as "George" and "London".

Handwritten text in a cursive script, continuing from the left page. It contains several lines of text, including what appears to be a signature or name at the bottom, possibly "George".

Handwritten text in a cursive script, continuing from the top page. The text is dense and difficult to read due to fading. Some words like "George" and "London" are visible.

Handwritten text in a cursive script, continuing from the top page. It includes several lines of text, with some words like "George" and "London" appearing.

Handwritten text in a cursive script, likely a medieval manuscript. The text is arranged in approximately 15 lines, though many are heavily obscured by ink bleed-through from the reverse side of the page. The script is dense and difficult to decipher due to the fading and overlapping of characters.

Handwritten text in a cursive script, continuing from the left column. It also consists of approximately 15 lines of text, with significant portions being illegible due to ink bleed-through and fading. The layout is consistent with the left column, suggesting a continuous narrative or list.

A shorter section of handwritten text, possibly a heading or a specific entry. It contains about 5 lines of text, which are partially obscured by bleed-through from the reverse side.

A larger section of handwritten text, possibly a list or a detailed entry. It contains about 10 lines of text, with some lines appearing to be numbered or organized in a specific way. The text is heavily obscured by bleed-through from the reverse side.

A final section of handwritten text at the bottom left of the page. It contains about 3 lines of text, which are also partially obscured by bleed-through from the reverse side.



Handwritten text in the upper left column, likely a list or account of items.

Handwritten text in the upper right column, continuing the list or account.

Handwritten text in the lower left column, possibly a continuation of the list.

Handwritten text in the lower right column, possibly a continuation of the list.

Fragment of an ancient manuscript page with dense, illegible text in a cursive script, possibly Greek or Latin. The page is heavily damaged, showing significant wear, discoloration, and a large tear near the top center. The text is arranged in approximately 20 horizontal lines, though many characters are obscured by the damage and fading. The script is highly stylized and difficult to decipher.

Handwritten text at the top left of the page, appearing to be a header or title.

Main body of handwritten text on the left side of the page, consisting of several lines of cursive script.

Lower section of handwritten text on the left side, continuing the narrative or list.

Main body of handwritten text on the right side of the page, continuing the narrative or list.

Lower section of handwritten text on the right side, continuing the narrative or list.

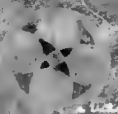
Handwritten text in a cursive script, likely a historical document or manuscript. The text is arranged in approximately 15 lines, though it is significantly obscured by dark, irregular ink smudges and stains, particularly in the lower half of the page. Some legible fragments include "Zur..." and "...

Handwritten text in a cursive script, continuing from the left column. It features a large, decorative initial letter, possibly a 'V' or 'W', which is highly stylized and partially obscured by ink smudges. The text is arranged in approximately 15 lines, with some characters appearing to be in a different script or dialect than the left column.

Handwritten text in a cursive script, continuing from the top left. The text is arranged in approximately 15 lines, with some characters appearing to be in a different script or dialect than the top left column. The text is significantly obscured by dark, irregular ink smudges and stains, particularly in the lower half of the page.

Handwritten text in a cursive script, continuing from the top right. The text is arranged in approximately 15 lines, with some characters appearing to be in a different script or dialect than the top right column. The text is significantly obscured by dark, irregular ink smudges and stains, particularly in the lower half of the page.



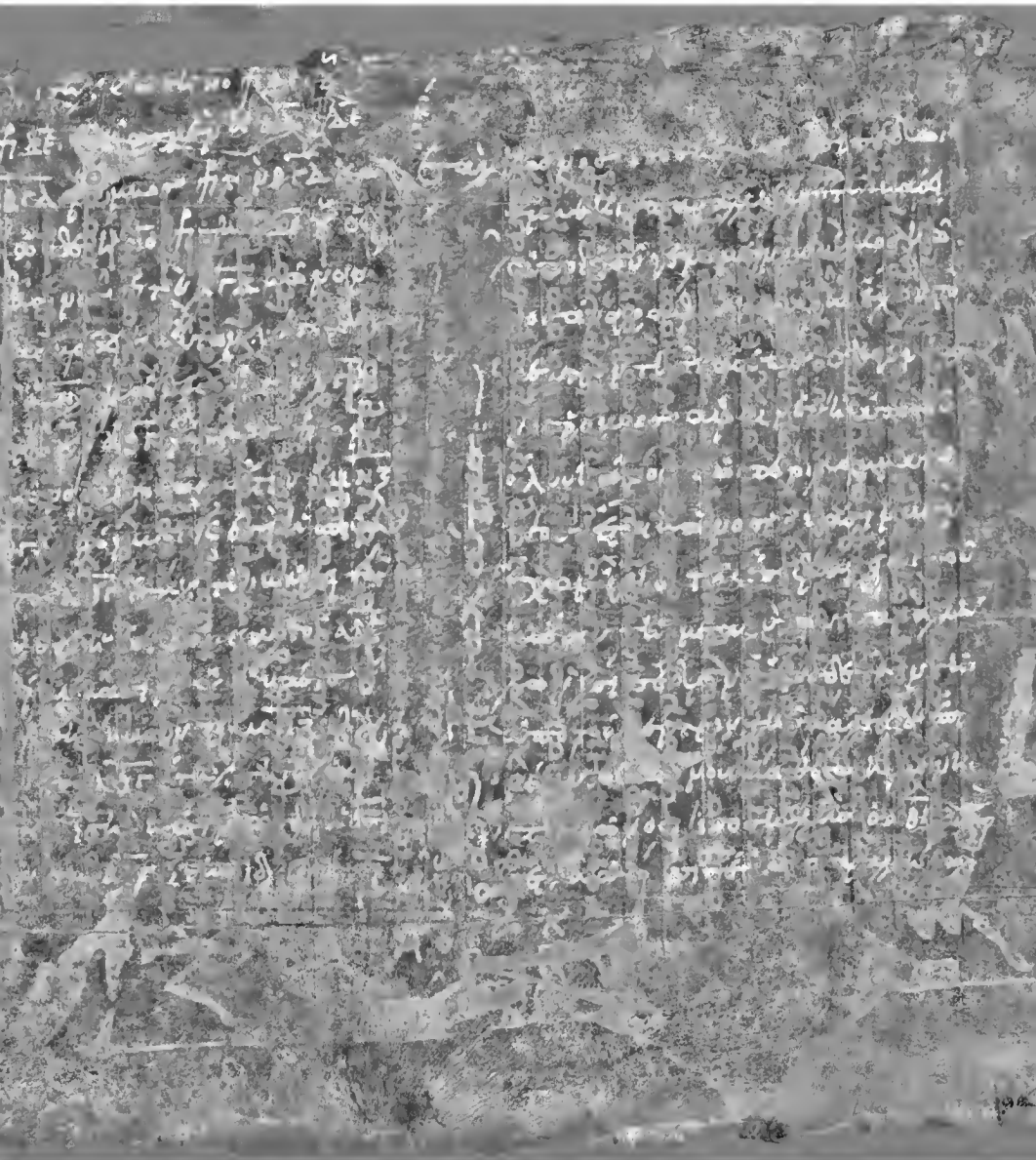


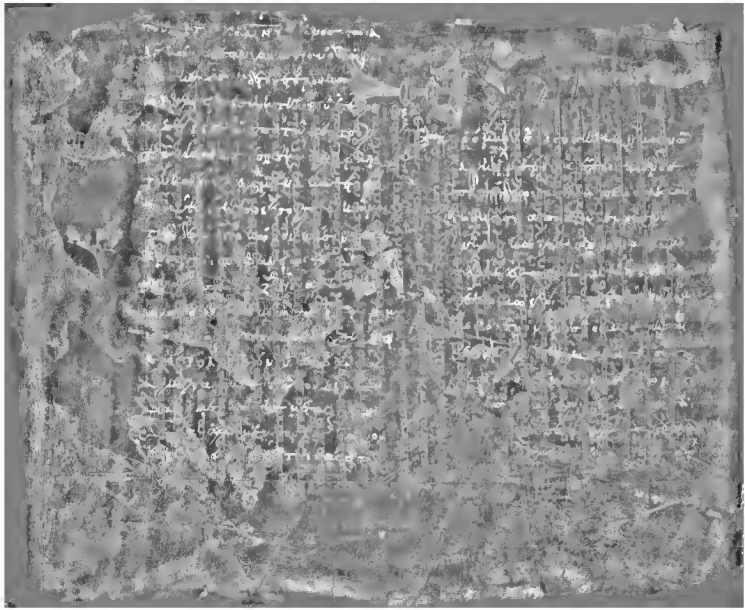
*[Faint, illegible handwritten text in a cursive script, likely a historical document or manuscript.]*

*[Faint, illegible handwritten text in a cursive script, likely a historical document or manuscript.]*

*[Faint, illegible handwritten text in a cursive script, likely a historical document or manuscript.]*

*[Faint, illegible handwritten text in a cursive script, likely a historical document or manuscript.]*





Handwritten text in a cursive script, likely a historical document or manuscript. The text is dense and occupies the left half of the page.

Handwritten text in a cursive script, likely a historical document or manuscript. The text is dense and occupies the right half of the page.

Handwritten text in a cursive script, likely a historical document or manuscript. The text is dense and occupies the left half of the page.

Handwritten text in a cursive script, likely a historical document or manuscript. The text is dense and occupies the right half of the page.

Handwritten text in a cursive script, likely a historical document or manuscript. The text is arranged in several lines and appears to be a formal record or account.

Handwritten text in a cursive script, likely a historical document or manuscript. The text is arranged in several lines and appears to be a formal record or account.

Handwritten text in a cursive script, likely a historical document or manuscript. The text is arranged in several lines and appears to be a formal record or account.

Handwritten text in a cursive script, likely a historical document or manuscript. The text is arranged in several lines and appears to be a formal record or account.

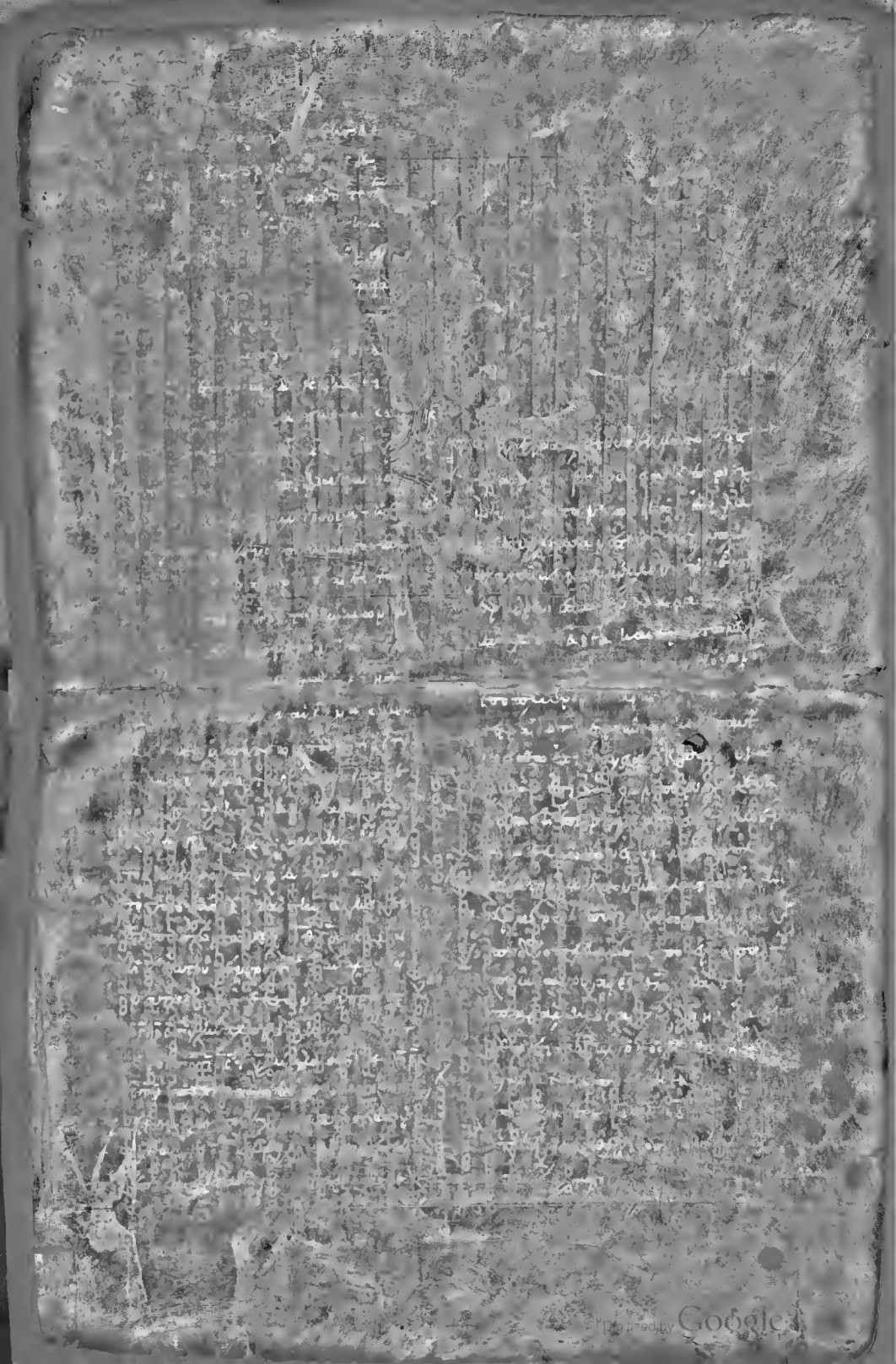
Handwritten text in the top left column, appearing to be a list or index of entries.

Handwritten text in the top right column, appearing to be a list or index of entries.

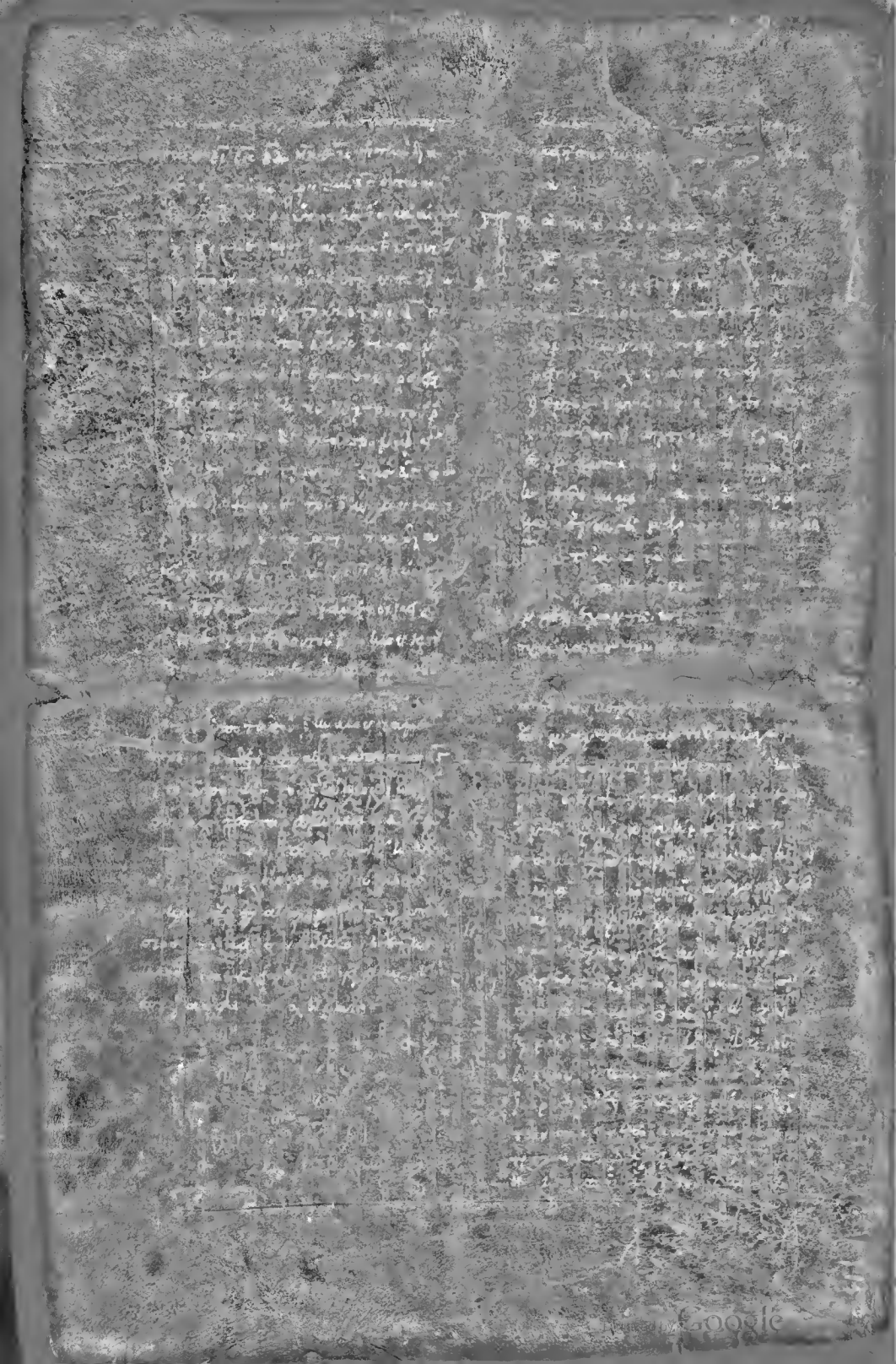
Handwritten text in the bottom left column, appearing to be a list or index of entries.

Handwritten text in the bottom right column, appearing to be a list or index of entries.









Handwritten text in a cursive script, likely a historical document or manuscript. The text is arranged in approximately 15 lines, though it is significantly obscured by dark, irregular ink smudges and stains, particularly in the lower half of the page. The legible portions appear to be a continuous block of text.

Handwritten text in a cursive script, continuing from the left page. It is also heavily obscured by dark ink smudges and stains. The text is arranged in approximately 15 lines, with some characters appearing to be in a different script or dialect than the left page, possibly indicating a bilingual or multilingual document.

Handwritten text in a cursive script, continuing from the left page. The text is arranged in approximately 15 lines, with some characters appearing to be in a different script or dialect. The page is heavily obscured by dark ink smudges and stains, particularly in the lower half.

Handwritten text in a cursive script, continuing from the left page. The text is arranged in approximately 15 lines, with some characters appearing to be in a different script or dialect. The page is heavily obscured by dark ink smudges and stains, particularly in the lower half.

Handwritten text in the upper left section of the page.

Handwritten text in the upper right section of the page.

Handwritten text in the lower left section of the page.

Handwritten text in the lower right section of the page.



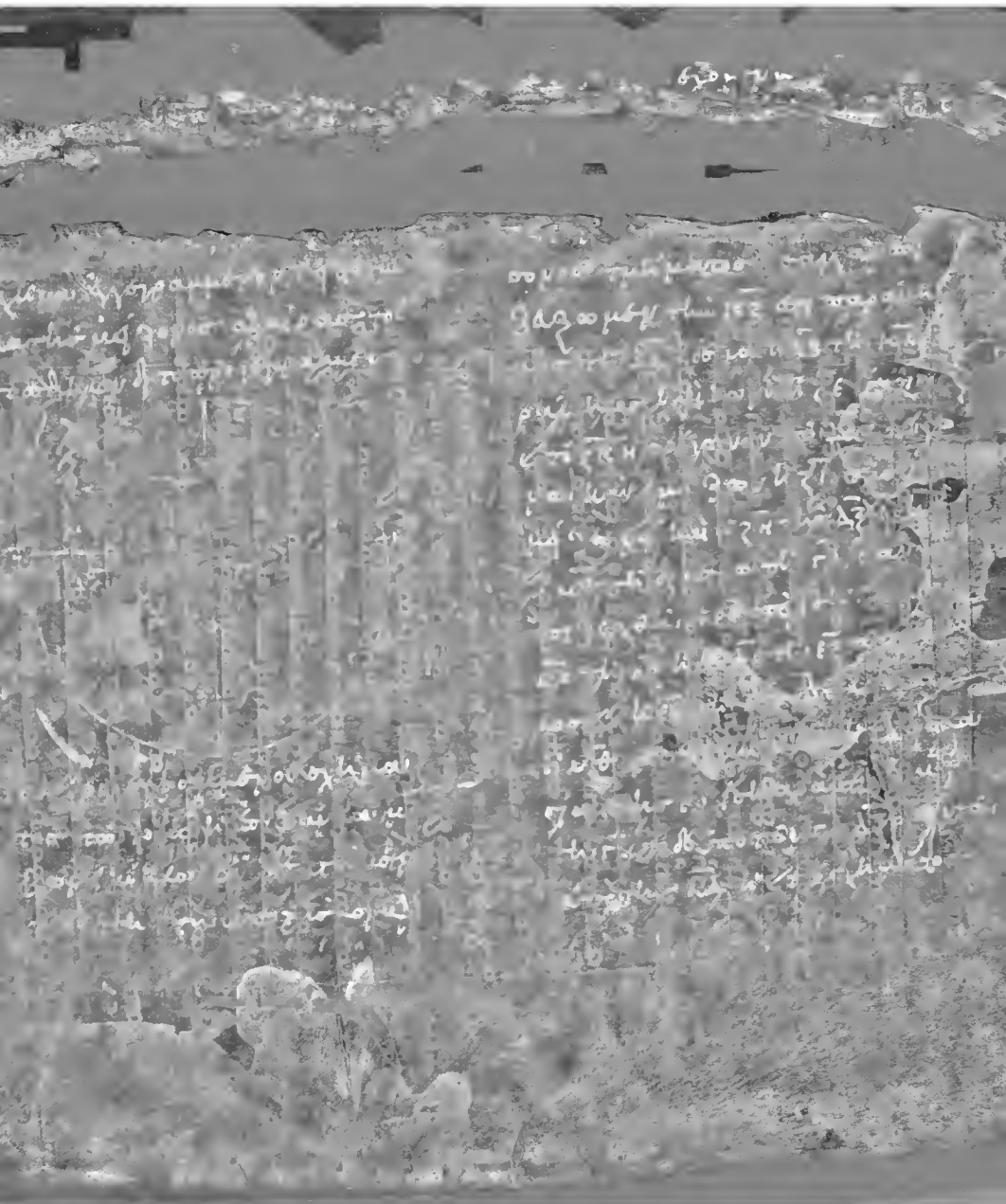


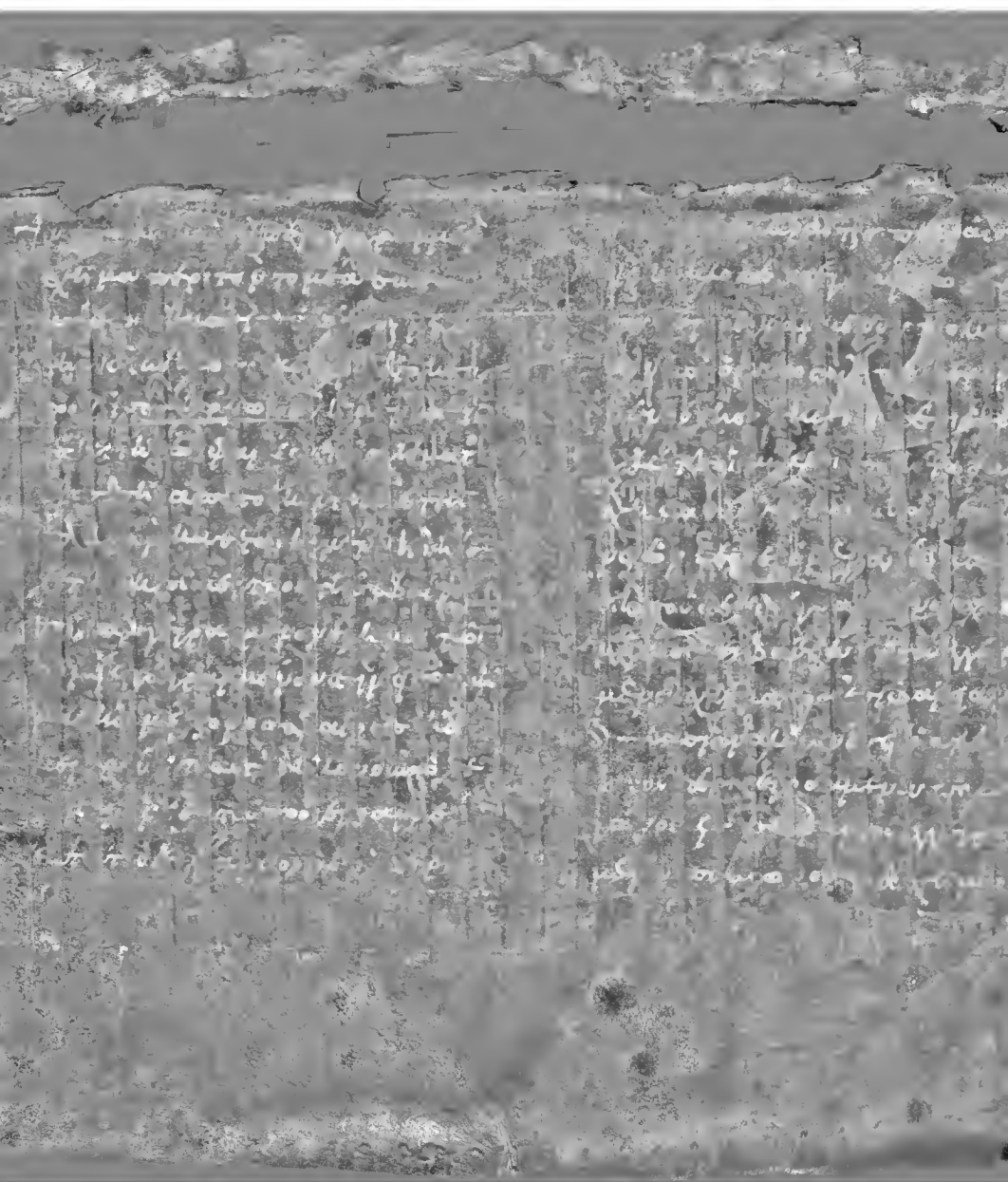
... in the year of our lord one thousand ...  
... and the said ...  
... and the said ...  
... and the said ...  
... and the said ...  
... and the said ...  
... and the said ...  
... and the said ...  
... and the said ...  
... and the said ...

... and the said ...  
... and the said ...  
... and the said ...  
... and the said ...  
... and the said ...  
... and the said ...  
... and the said ...  
... and the said ...  
... and the said ...  
... and the said ...

... and the said ...  
... and the said ...  
... and the said ...  
... and the said ...  
... and the said ...  
... and the said ...  
... and the said ...  
... and the said ...  
... and the said ...  
... and the said ...

... and the said ...  
... and the said ...  
... and the said ...  
... and the said ...  
... and the said ...  
... and the said ...  
... and the said ...  
... and the said ...  
... and the said ...  
... and the said ...







Fragment of ancient Greek text, likely from a papyrus scroll. The script is a cursive hand, possibly from the Hellenistic or Roman period. The text is arranged in approximately 15 horizontal lines, though the right edges are irregular due to the fragment's shape. The ink is dark and the background is a light, textured surface.

Fragment of ancient Greek text, continuing from the left fragment. It consists of about 15 lines of cursive script. The text is densely packed and shows signs of being part of a larger document. The fragment is roughly rectangular with some missing corners.

Fragment of ancient Greek text, showing a continuation of the script. The lines are somewhat irregular in length. The text is written in a consistent cursive hand. The fragment is roughly rectangular and appears to be a separate piece from the top section.

Fragment of ancient Greek text, showing a continuation of the script. The lines are somewhat irregular in length. The text is written in a consistent cursive hand. The fragment is roughly rectangular and appears to be a separate piece from the top section.

Handwritten text in a medieval script, likely Latin, arranged in two columns. The text is dense and appears to be a liturgical or legal document. A large, ornate initial letter 'I' is visible on the left side of the page, containing three circular motifs. The parchment shows signs of age and wear, with some staining and irregular edges.

Handwritten text in a medieval script, likely Latin, arranged in two columns. The text is dense and appears to be a liturgical or legal document. The parchment shows signs of age and wear, with some staining and irregular edges.

*[The page contains two columns of extremely faint, illegible handwritten text, likely in a historical script. The text is heavily obscured by noise and low contrast, making it impossible to transcribe accurately.]*

*[The page contains two columns of handwritten text in a cursive script, likely from a 17th or 18th-century manuscript. The text is extremely faded and difficult to decipher. A large, dark ink blot or smudge is visible in the upper right quadrant of the page, partially obscuring the text. The handwriting appears to be a form of early modern cursive, possibly French or Italian.]*

Handwritten text in a cursive script, likely a historical document or manuscript. The text is dense and covers the upper half of the page.

Handwritten text in a cursive script, continuing from the upper section. The text is dense and covers the lower half of the page.

Handwritten text in a cursive script, likely a historical document or manuscript. The text is dense and covers the upper half of the page.

Handwritten text in a cursive script, continuing from the upper section. The text is dense and covers the lower half of the page.

Faint, illegible handwritten text in the left column, possibly a list or account.

Handwritten text in the lower left section, appearing as a separate entry or note.

Handwritten text in the upper right section, continuing the list or account.

Handwritten text in the lower right section, appearing as a separate entry or note.

Handwritten text in a cursive script, likely a historical document or manuscript. The text is arranged in several columns and is significantly obscured by heavy staining and fading. The script is difficult to decipher due to the poor condition of the document.

Handwritten text in a cursive script, continuing from the top section. The text is arranged in several columns and is significantly obscured by heavy staining and fading. The script is difficult to decipher due to the poor condition of the document.

Faint handwritten text in a medieval script, possibly Latin or Gothic, arranged in a single column on the left side of the page.

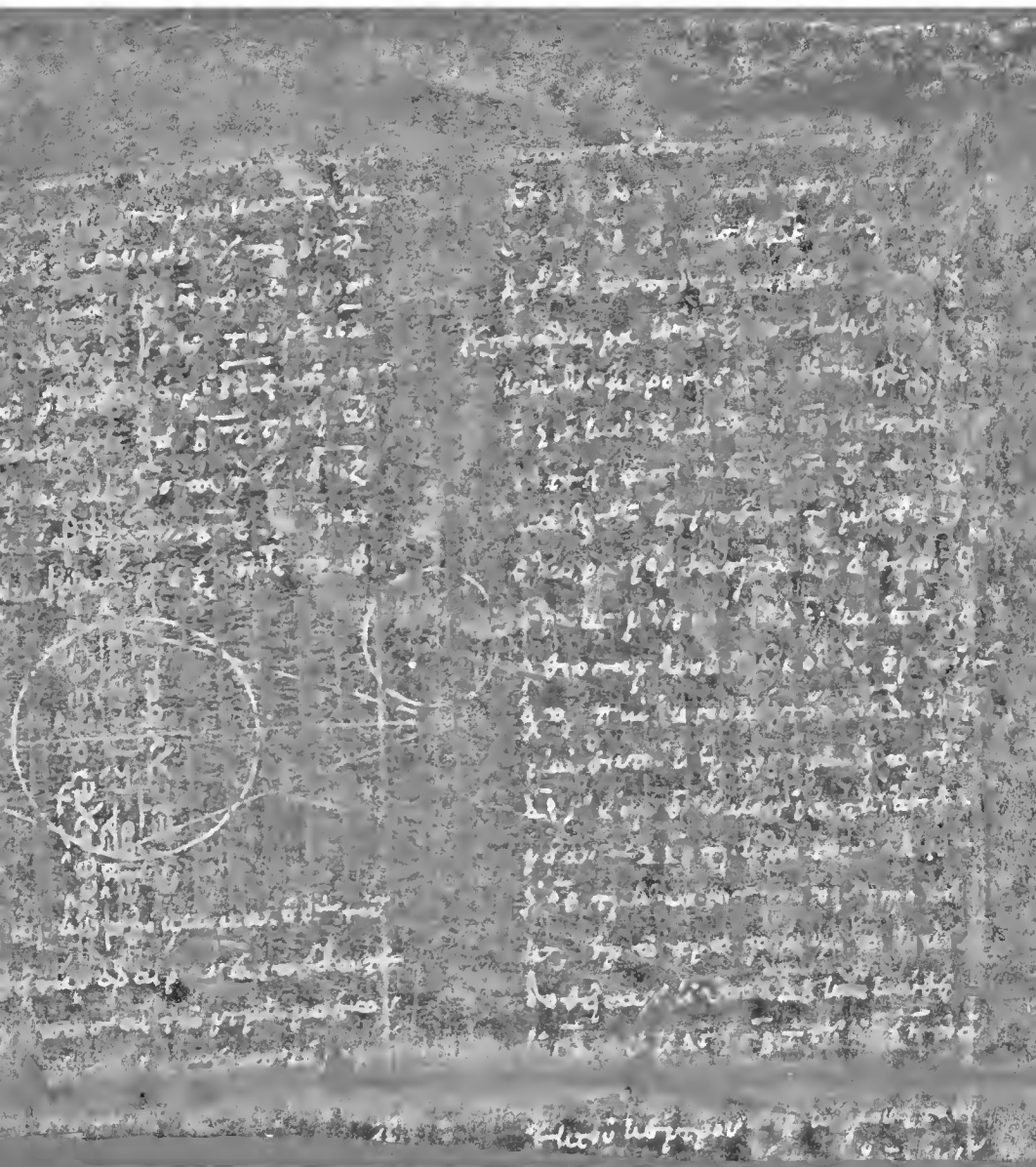
Faint handwritten text in a medieval script, possibly Latin or Gothic, arranged in a single column on the right side of the page.



Faint handwritten text in a medieval script, possibly Latin or Gothic, arranged in a single column on the left side of the page, below the diagram.

Faint handwritten text in a medieval script, possibly Latin or Gothic, arranged in a single column on the right side of the page, below the diagram.





*[Faded ancient Greek text, likely from a manuscript]*

ὄνομα τῶν ἁγίων πνευμάτων

*[Faded ancient Greek text, likely from a manuscript]*

Fragment of an ancient manuscript page, showing the top portion of several columns of text. The text is written in a cursive script, likely from the Middle Ages, and is heavily obscured by dark, irregular stains and a large, irregular tear at the top center. The remaining text is illegible due to the damage.

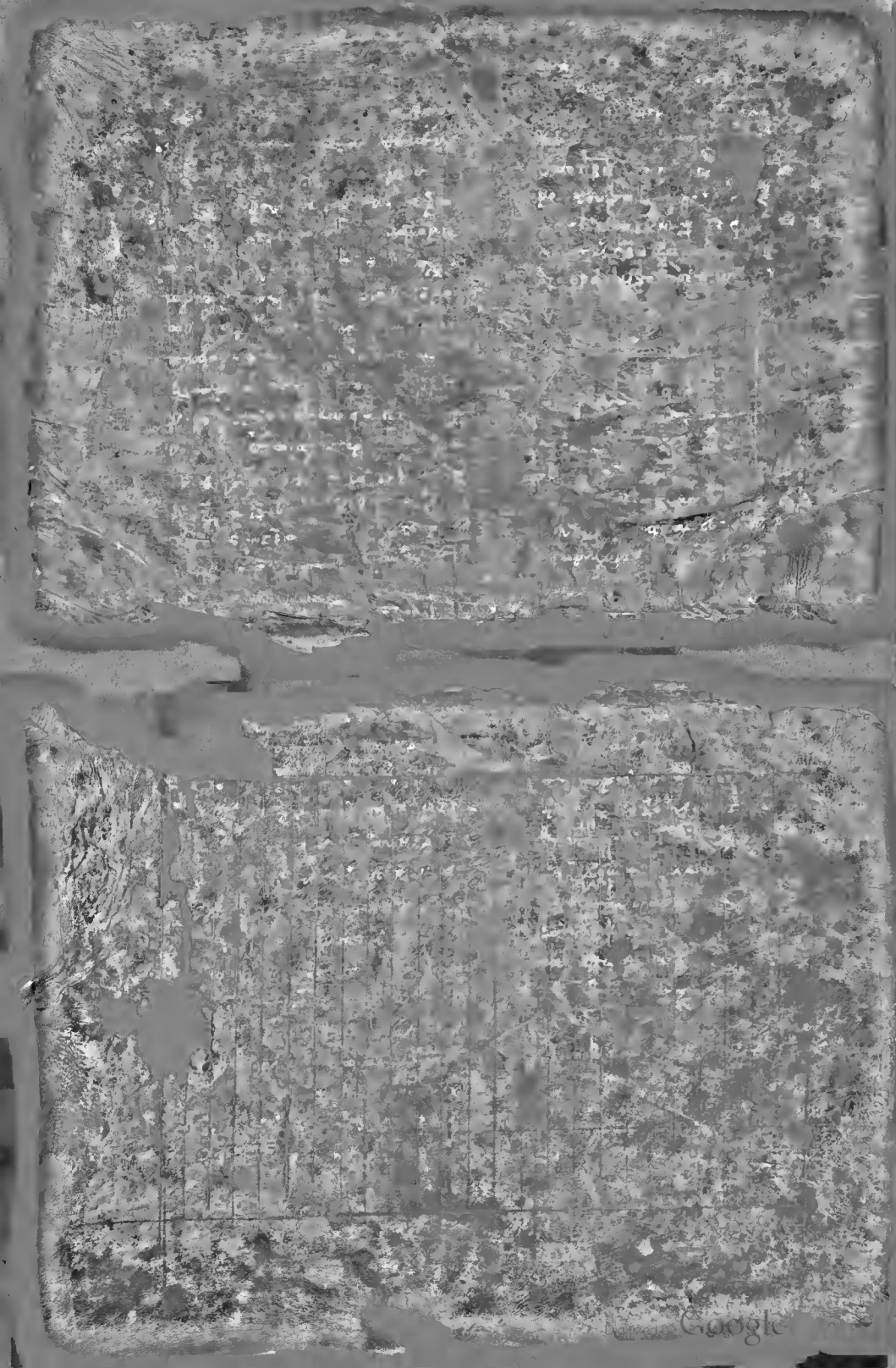
Fragment of an ancient manuscript page, showing the bottom portion of several columns of text. The text is written in a cursive script, likely from the Middle Ages, and is heavily obscured by dark, irregular stains and a large, irregular tear at the top center. The remaining text is illegible due to the damage.

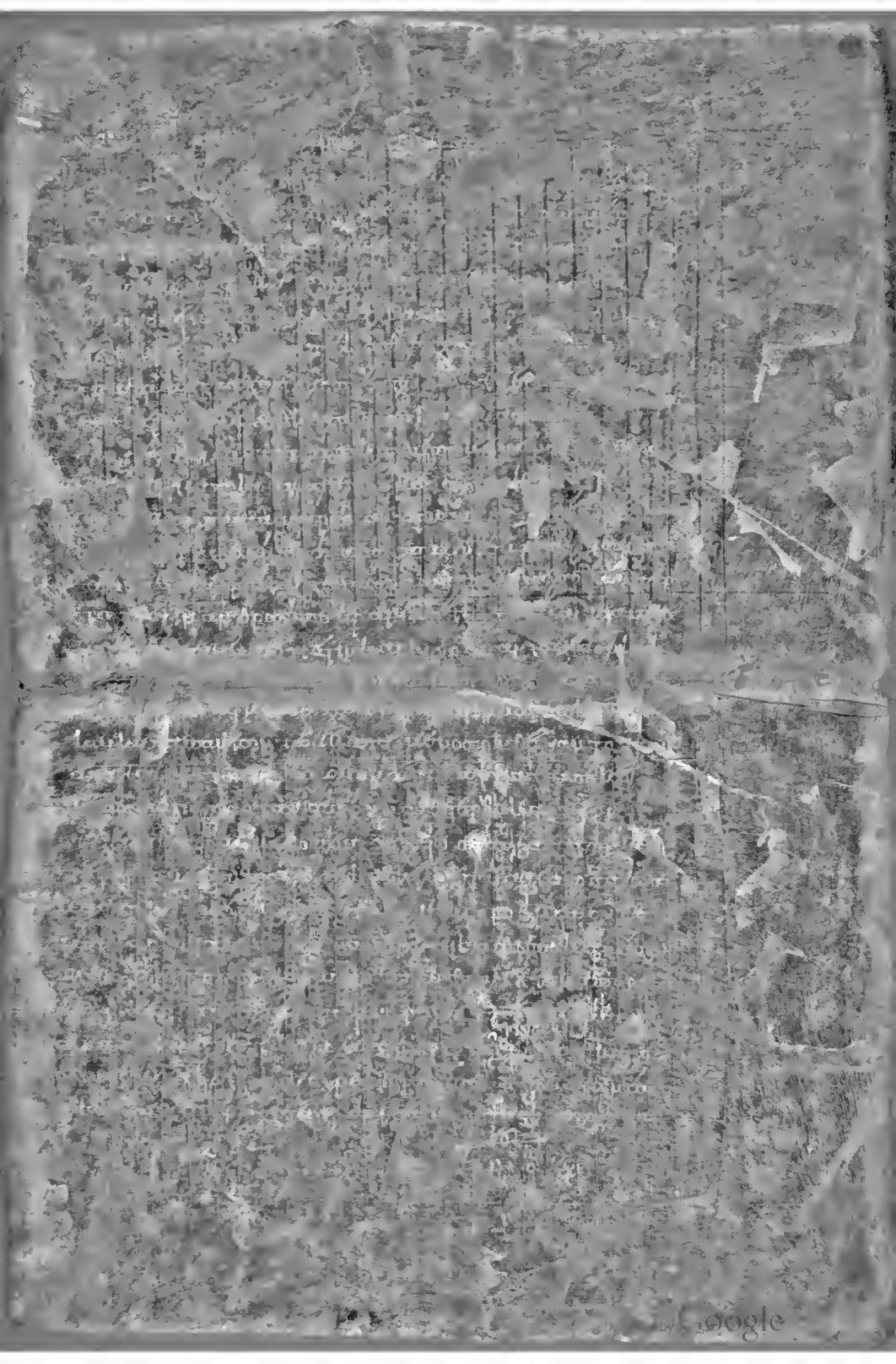




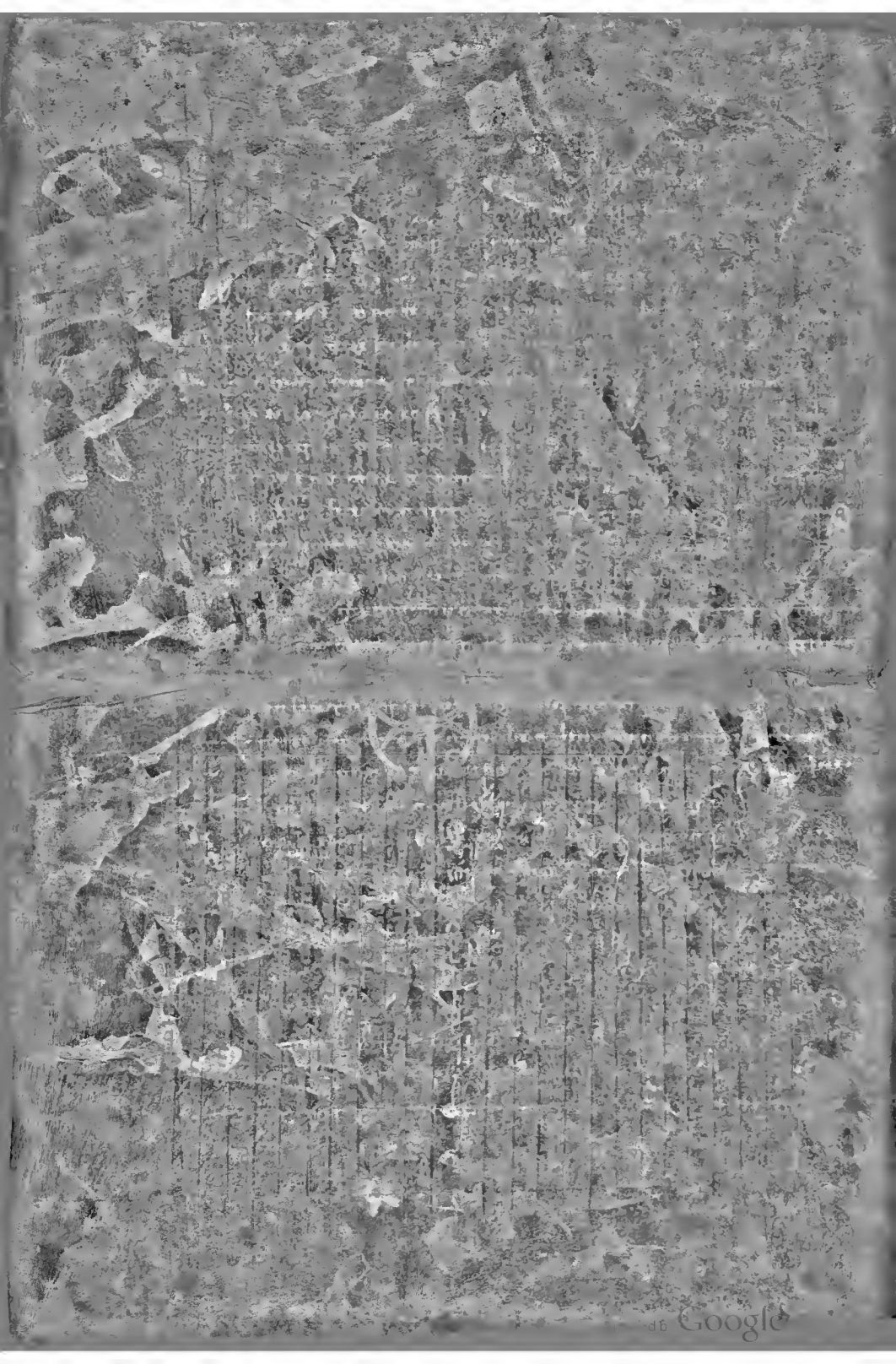
Handwritten text in a cursive script, likely from a 17th or 18th-century manuscript. The text is arranged in several lines and is significantly obscured by dark, irregular ink blotches and smudges, particularly in the lower half of the page. Some legible fragments include "1654" and "1655".

Continuation of handwritten text in a cursive script, also heavily obscured by dark ink blotches and smudges. The text is arranged in several lines. Some legible fragments include "1656" and "1657".



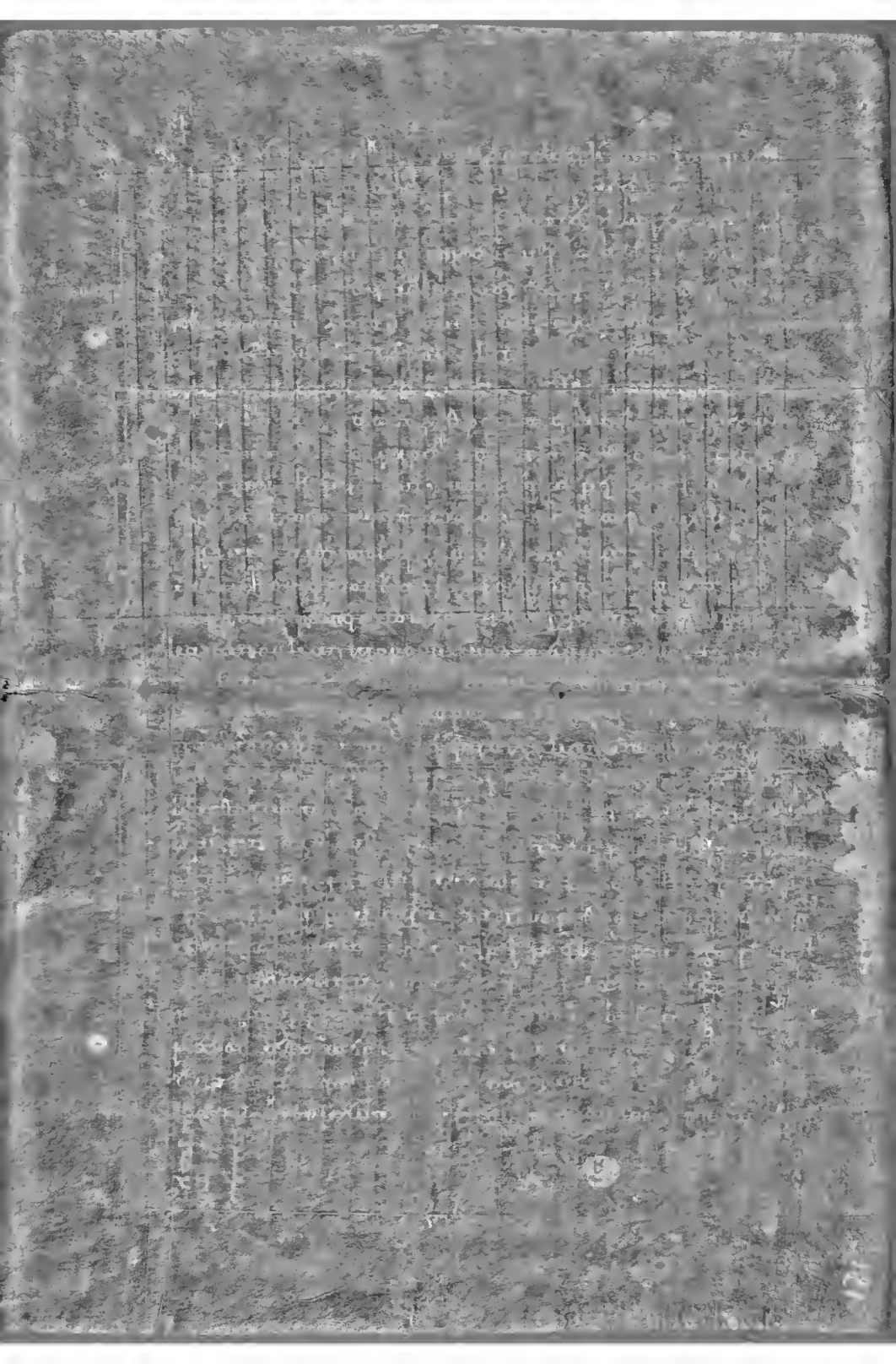




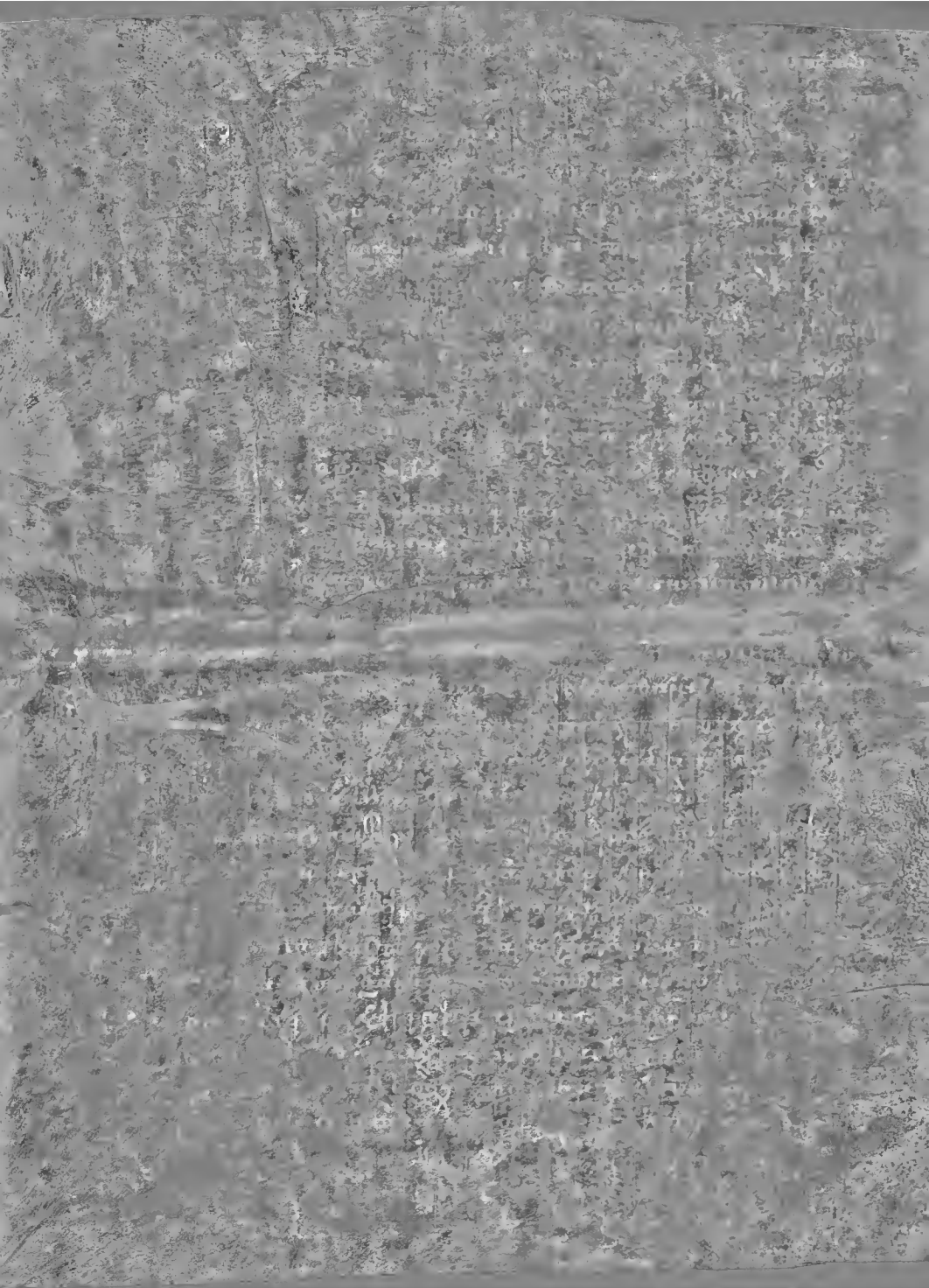


The first part of the document discusses the general principles of the law of nature, which are derived from the laws of God. It is argued that these laws are not arbitrary but are based on the nature of things themselves. The author then proceeds to discuss the specific laws of nature, which are derived from the general principles. These laws are said to be the same for all men, and are not subject to change or alteration. The author then discusses the laws of society, which are derived from the laws of nature. These laws are said to be the same for all men, and are not subject to change or alteration. The author then discusses the laws of government, which are derived from the laws of nature. These laws are said to be the same for all men, and are not subject to change or alteration.

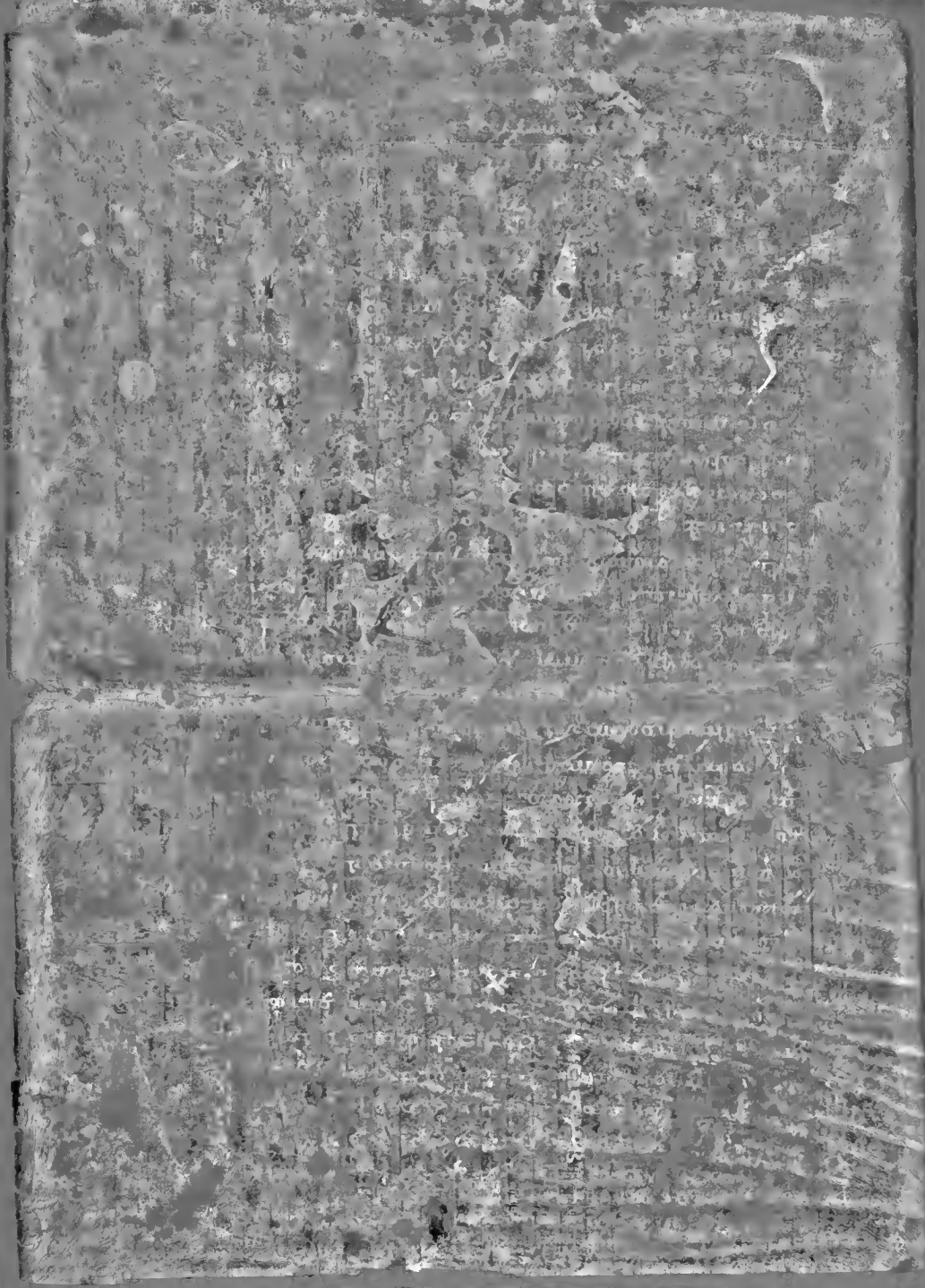
The second part of the document discusses the application of the laws of nature to the laws of society and government. It is argued that the laws of society and government should be based on the laws of nature, and should not be subject to change or alteration. The author then discusses the laws of society, which are derived from the laws of nature. These laws are said to be the same for all men, and are not subject to change or alteration. The author then discusses the laws of government, which are derived from the laws of nature. These laws are said to be the same for all men, and are not subject to change or alteration.





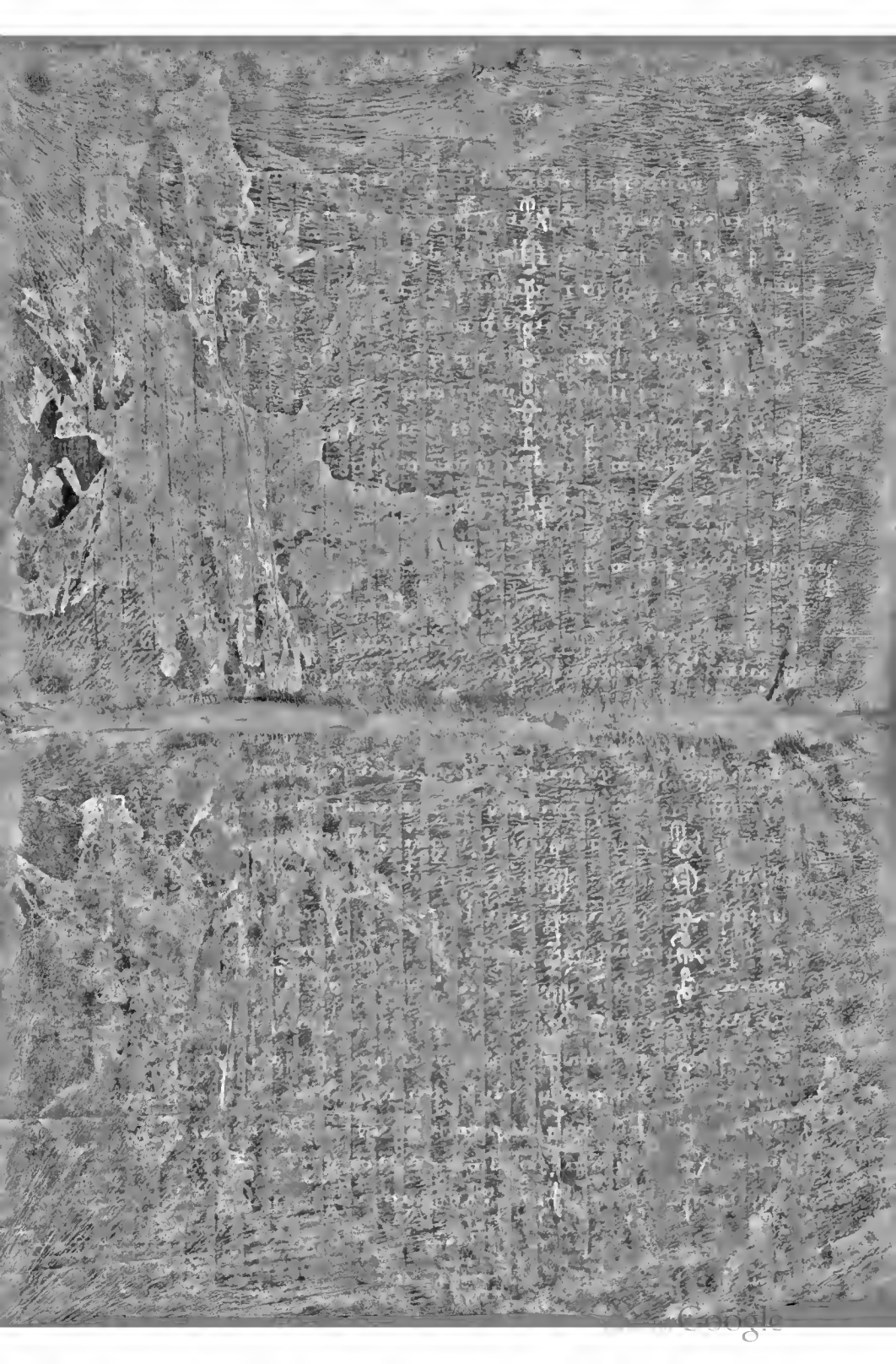


THE HISTORY OF THE  
CITY OF BOSTON  
FROM 1630 TO 1800  
BY  
JOHN B. HENNING



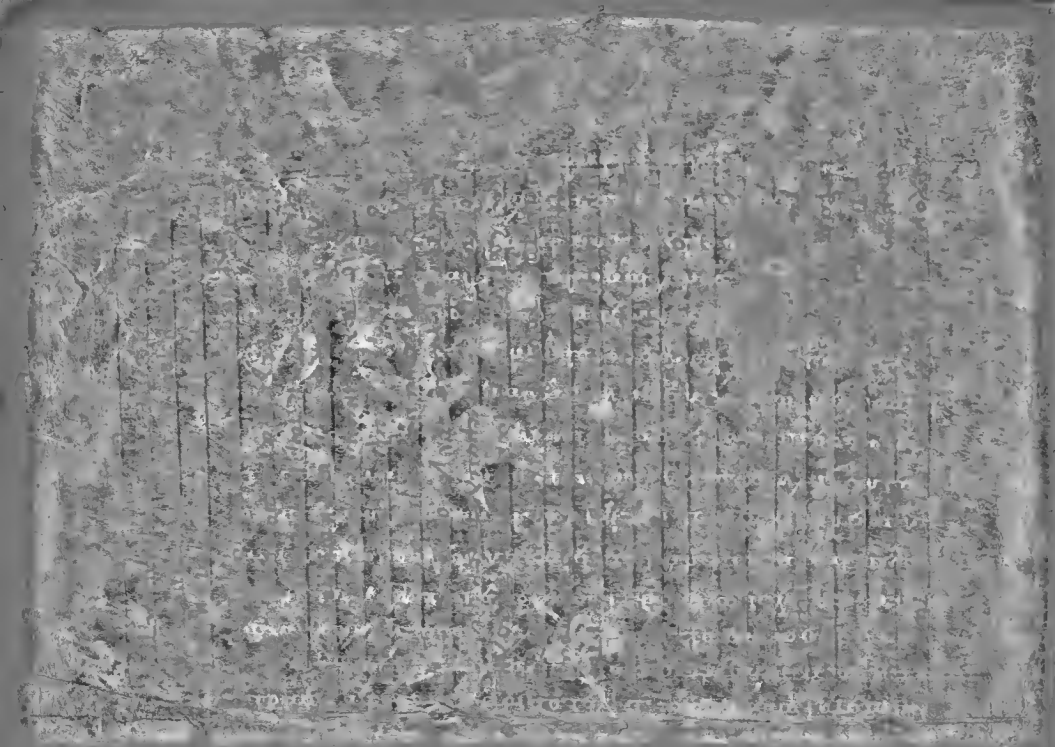


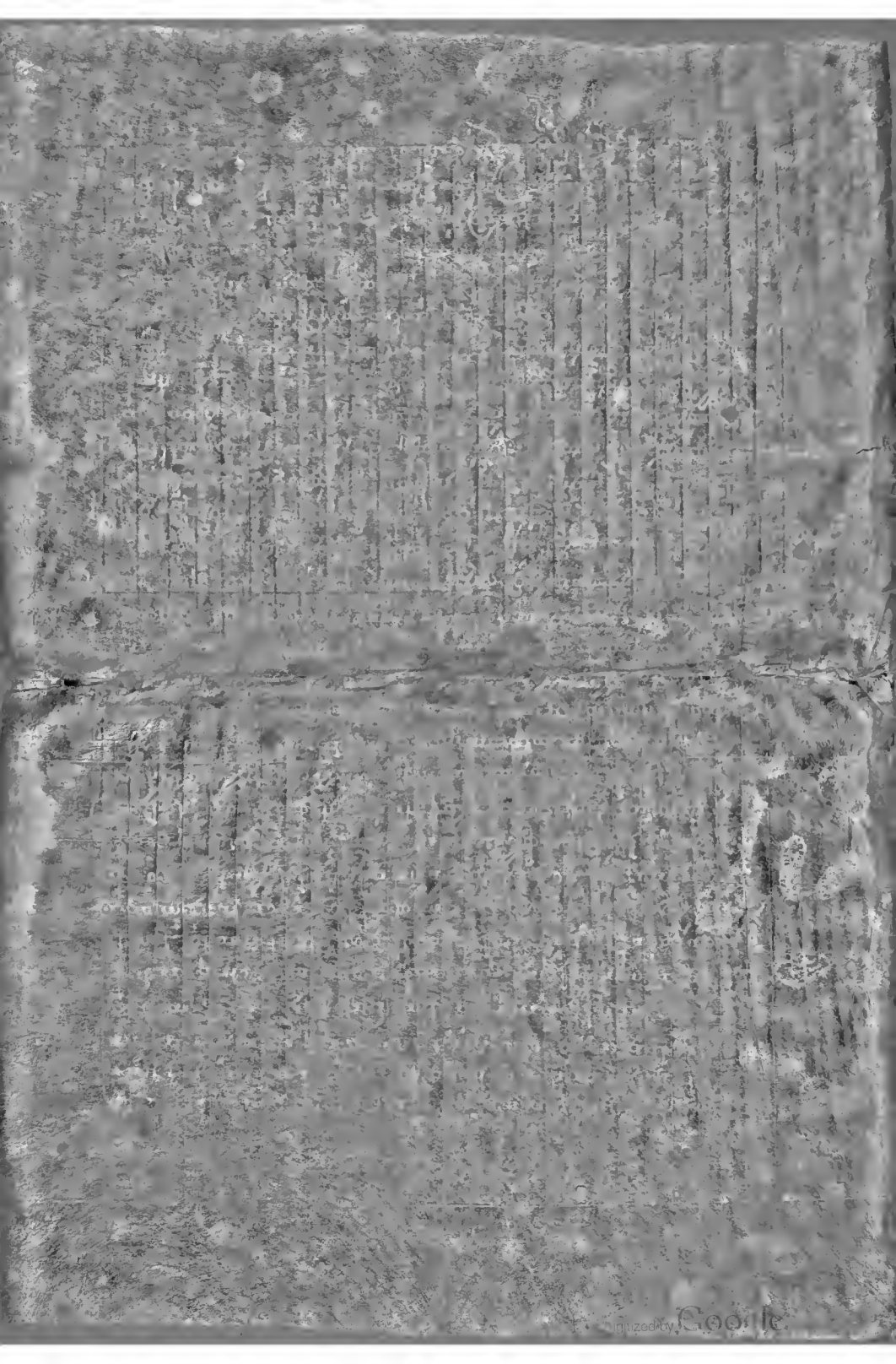




Digitized by Google

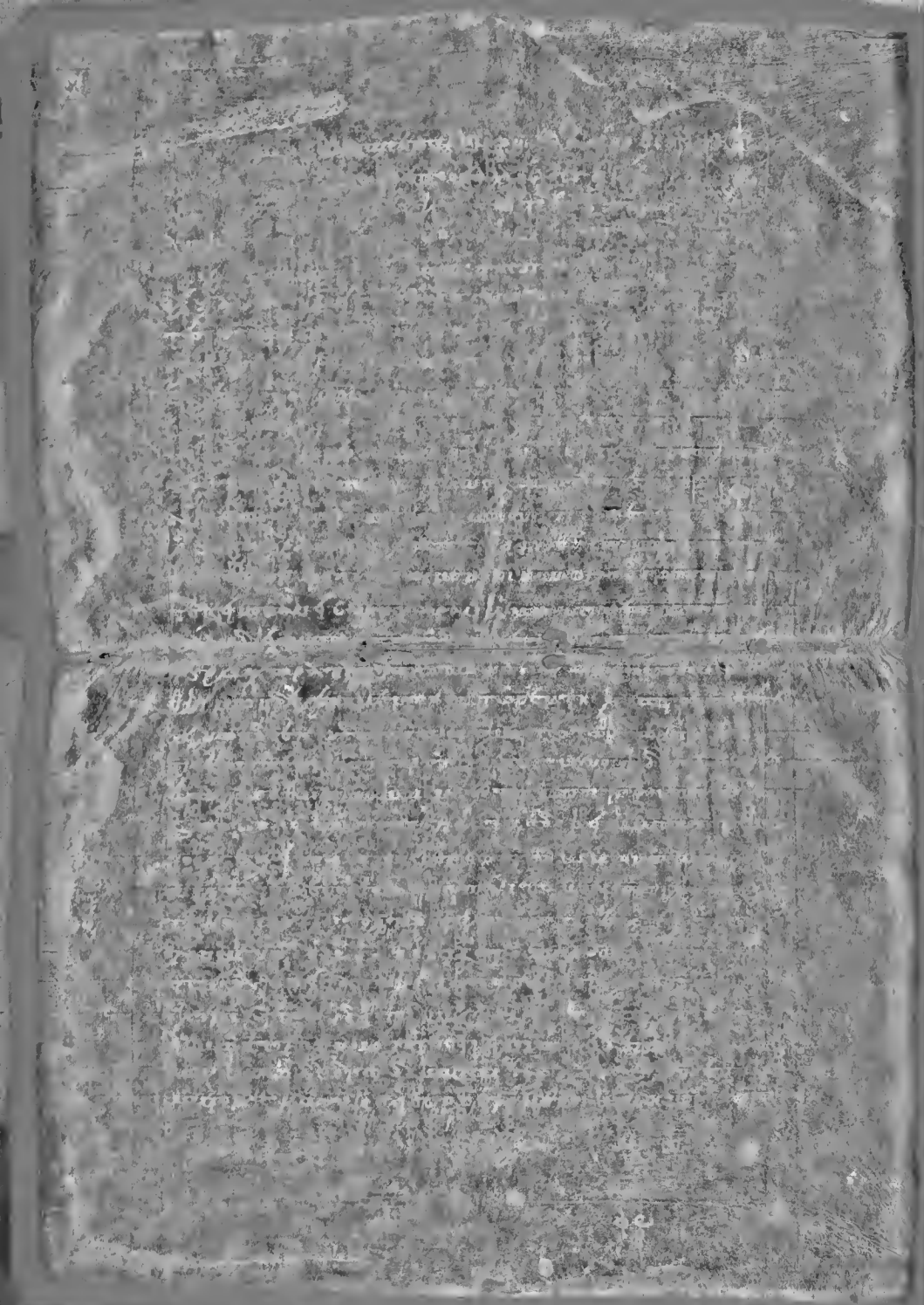






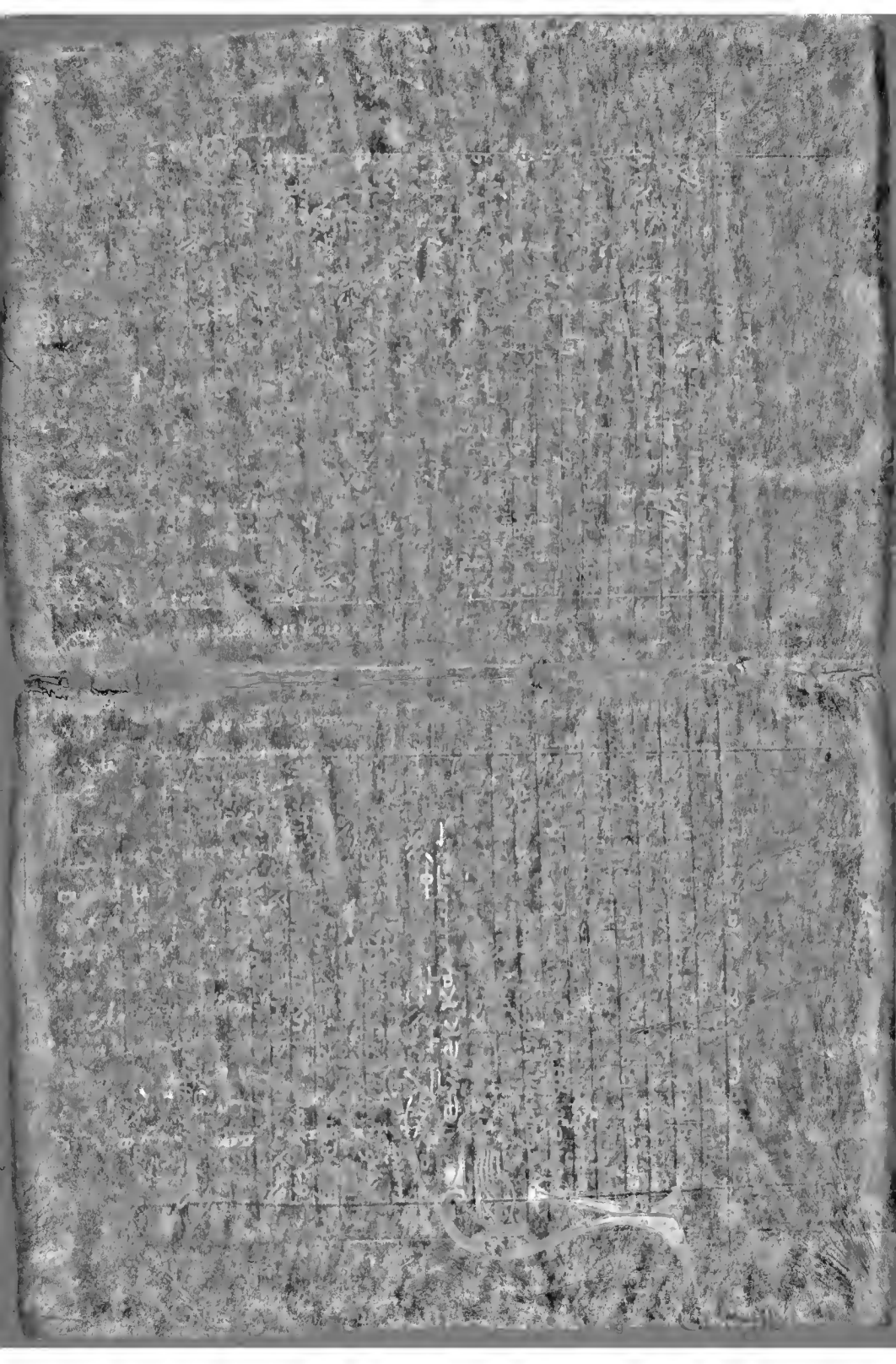
Vertical columns of text, likely bleed-through from the reverse side of the page. The characters are faint and difficult to decipher due to the image quality and bleed-through.

Vertical columns of text, likely bleed-through from the reverse side of the page. The characters are faint and difficult to decipher due to the image quality and bleed-through.

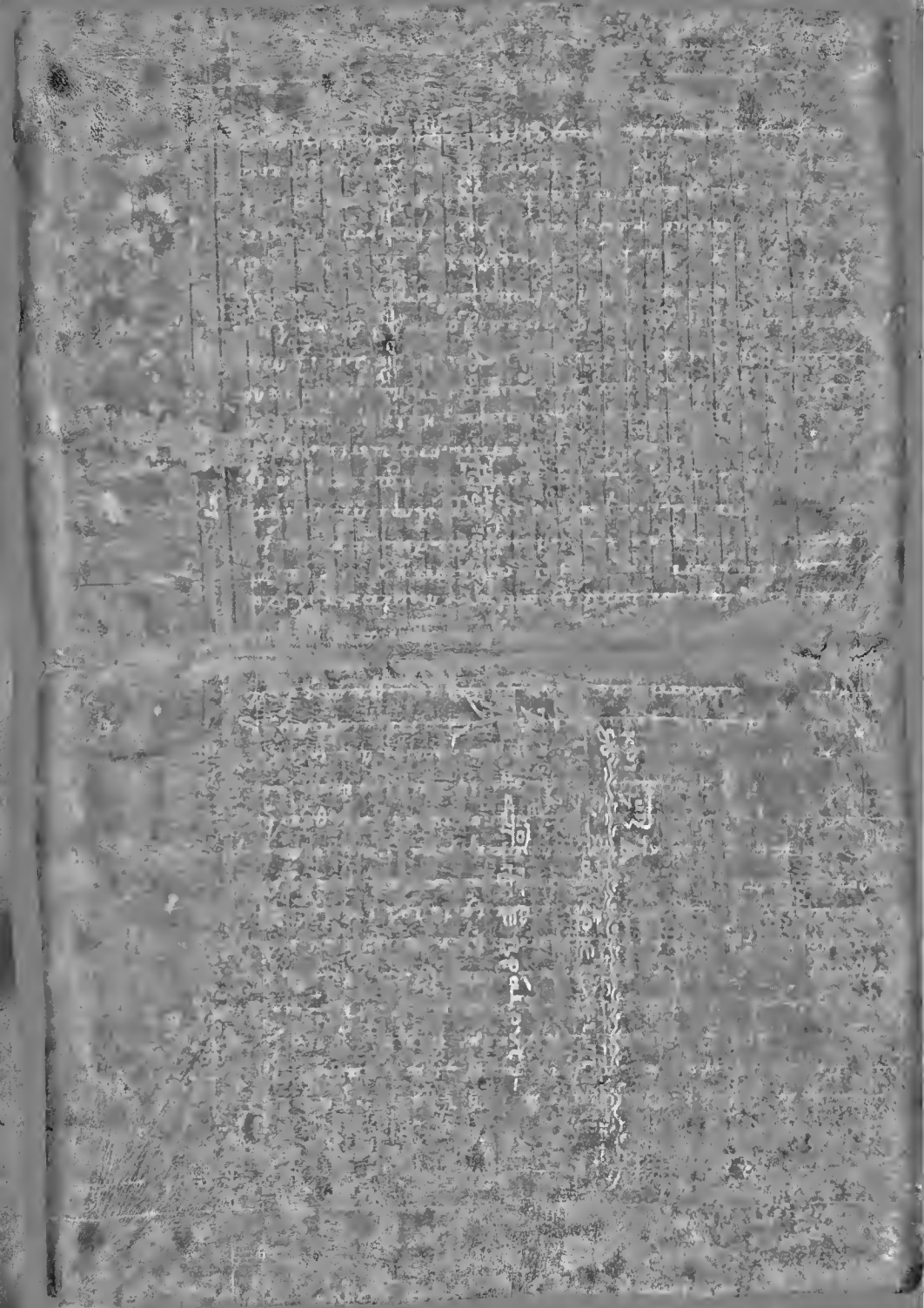


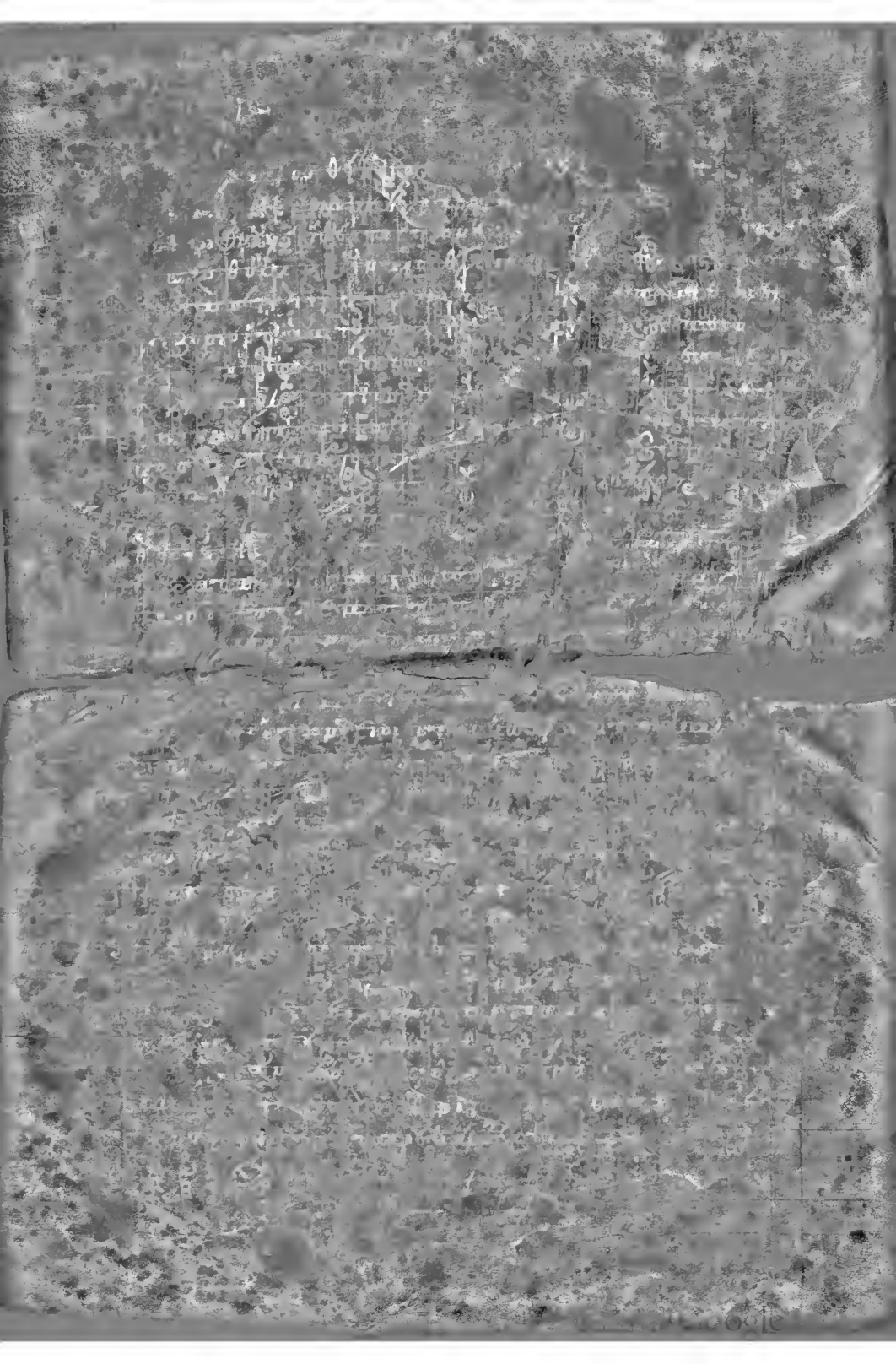
Handwritten text in a cursive script, likely a historical document or manuscript. The text is densely packed and spans the upper half of the page.

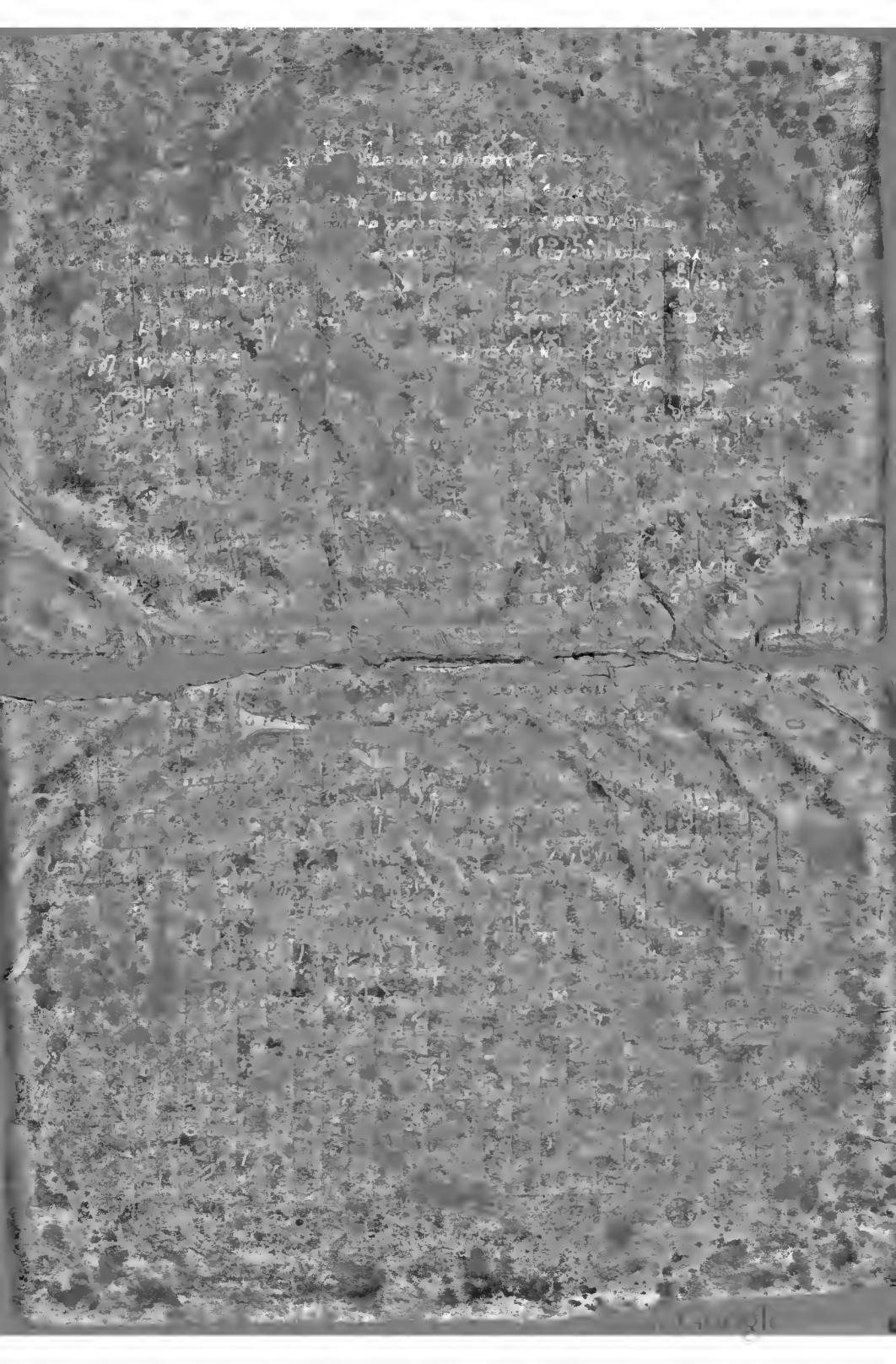
Handwritten text in a cursive script, likely a historical document or manuscript. The text is densely packed and spans the lower half of the page.

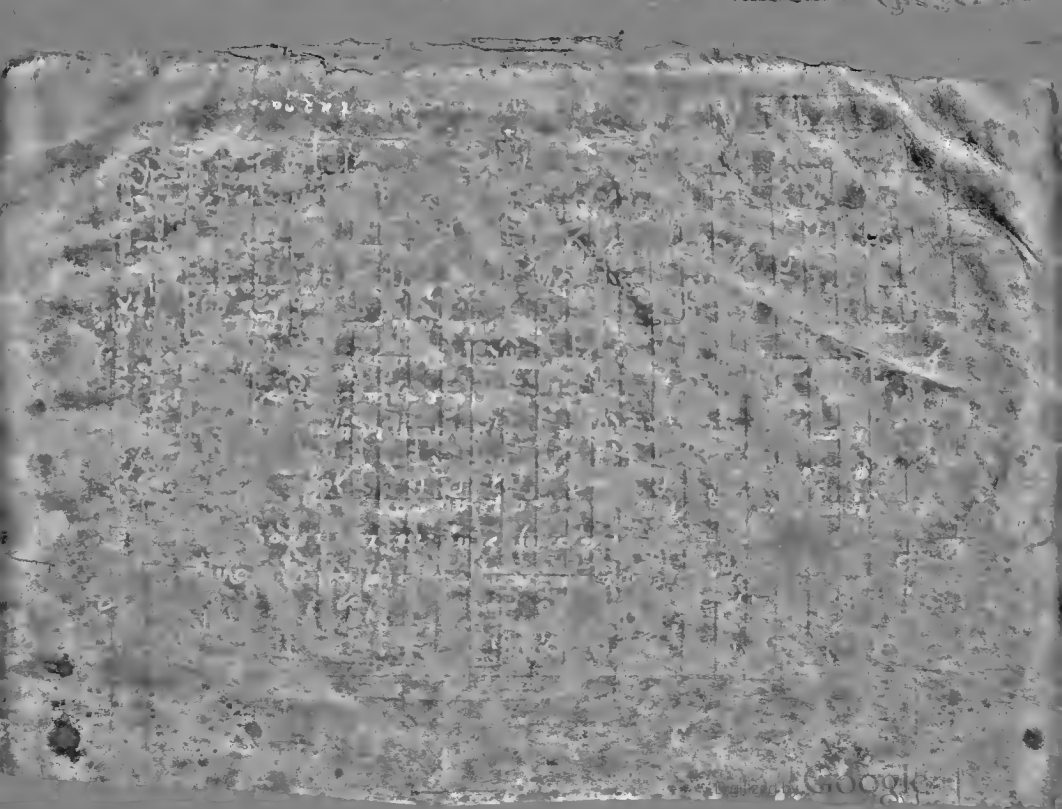
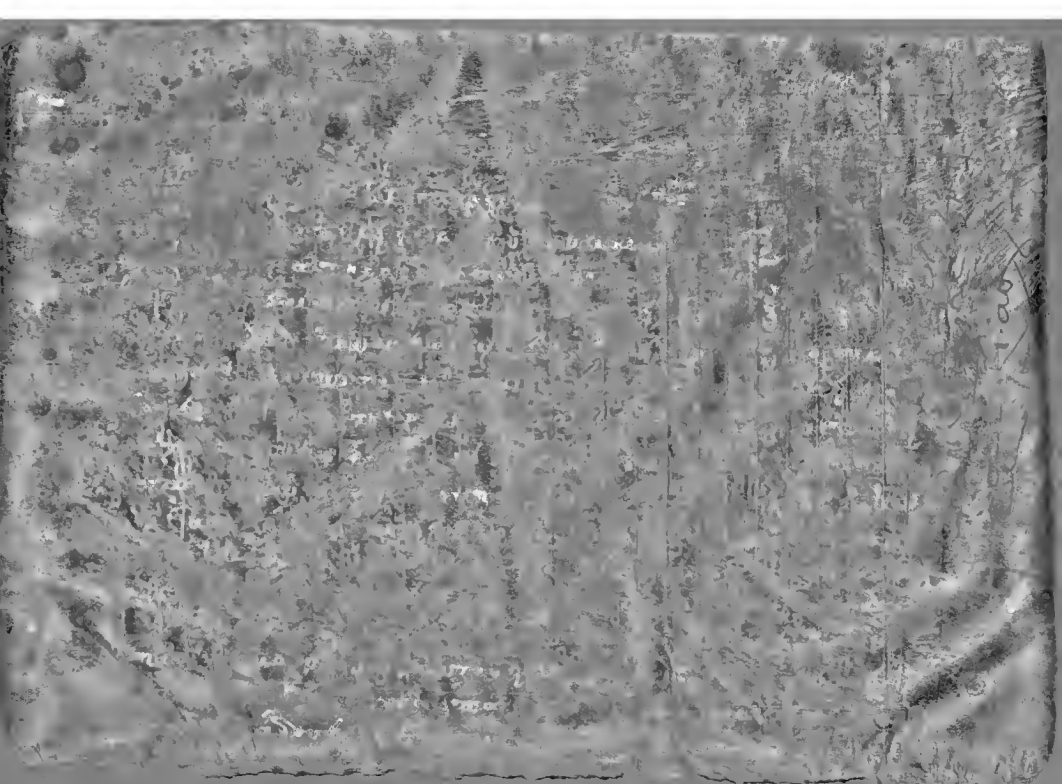










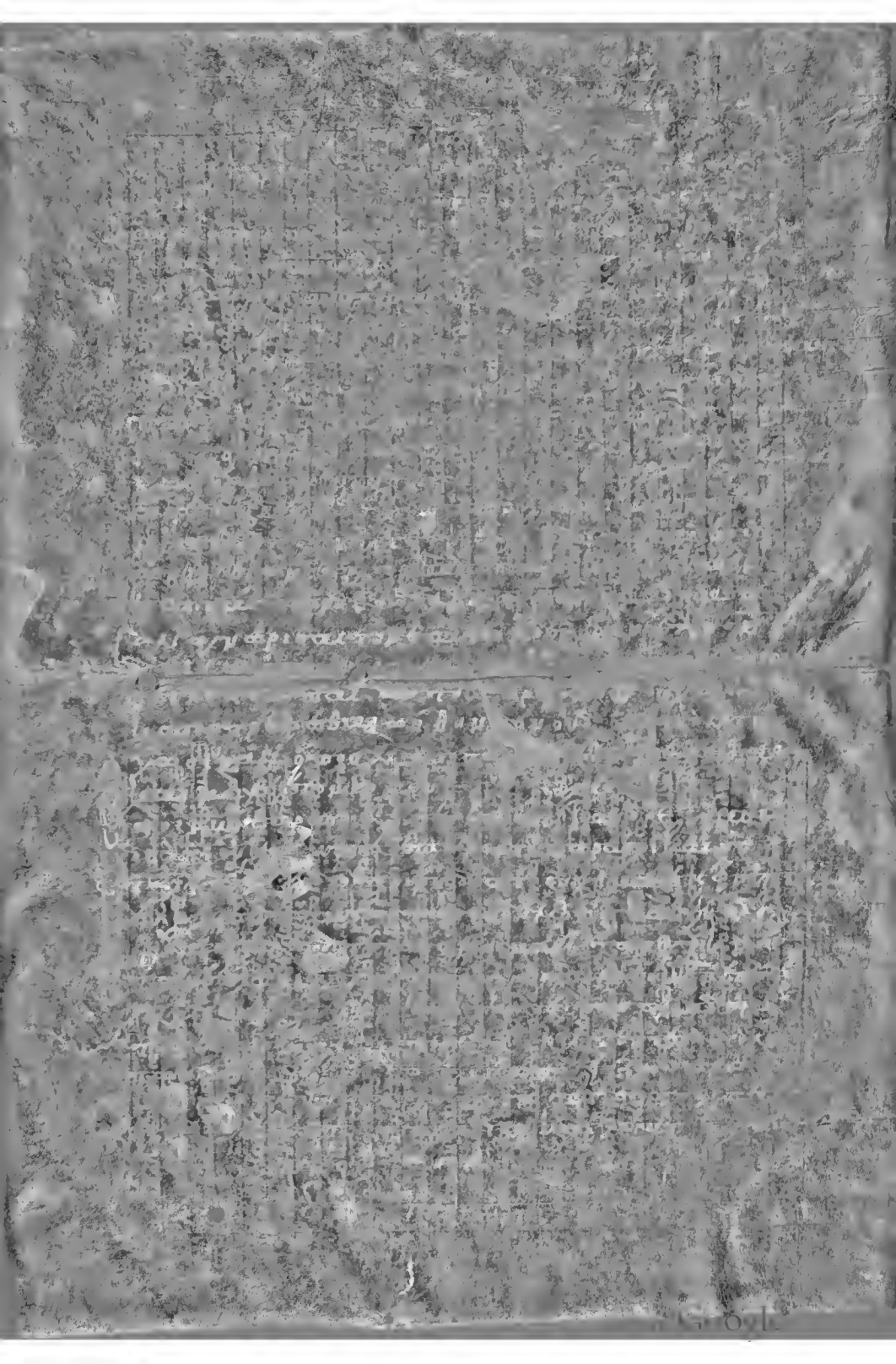


Fragment of an ancient manuscript page with faint, illegible text.

Fragment of an ancient manuscript page with faint, illegible text.

Handwritten text in a cursive script, likely a historical document or letter. The text is densely packed and spans the upper half of the page.

Handwritten text in a cursive script, likely a historical document or letter. The text is densely packed and spans the lower half of the page.







*[Faint, mostly illegible text in the upper section of the page, appearing to be a list or series of entries.]*

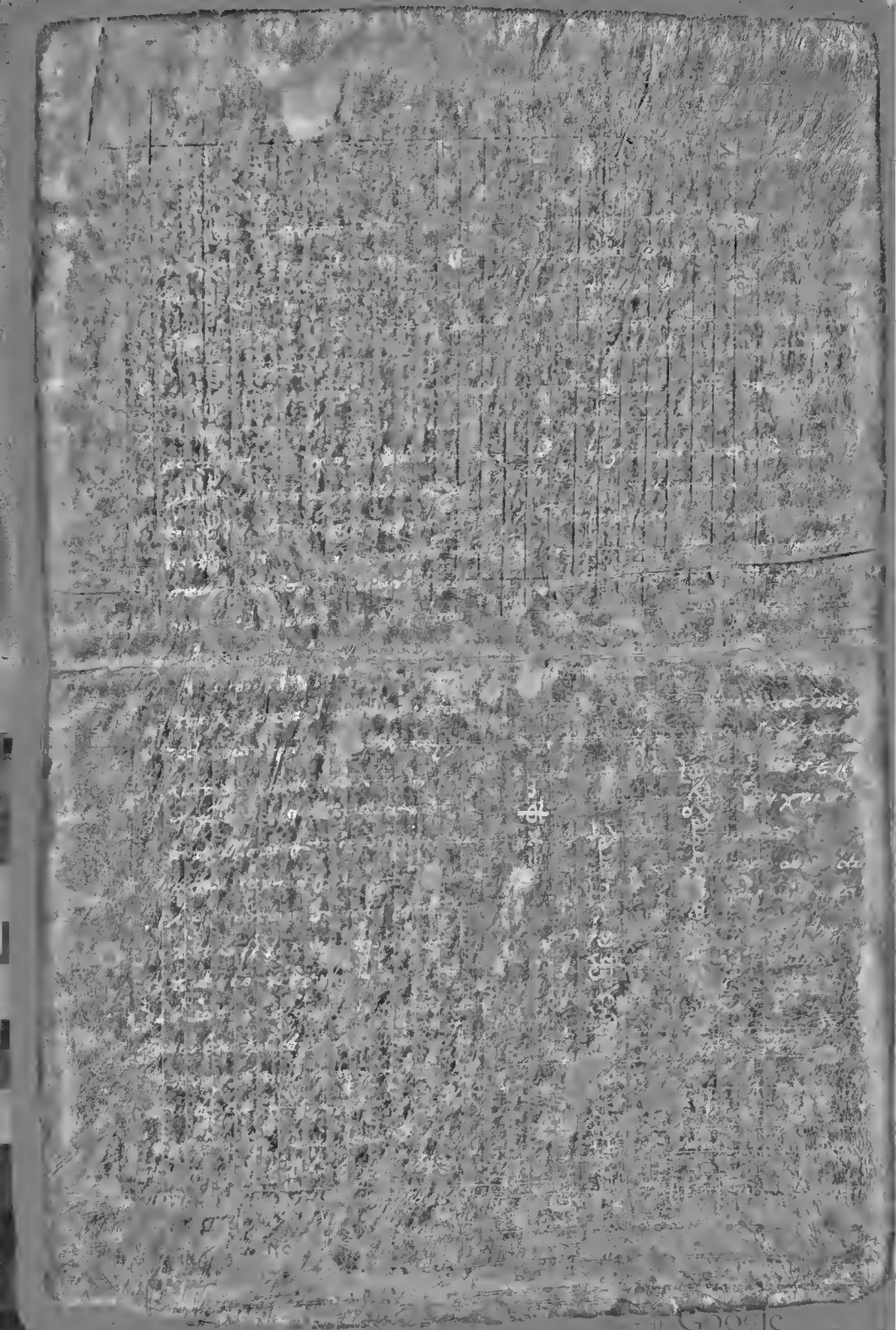
*[Faint, mostly illegible text in the middle section of the page.]*

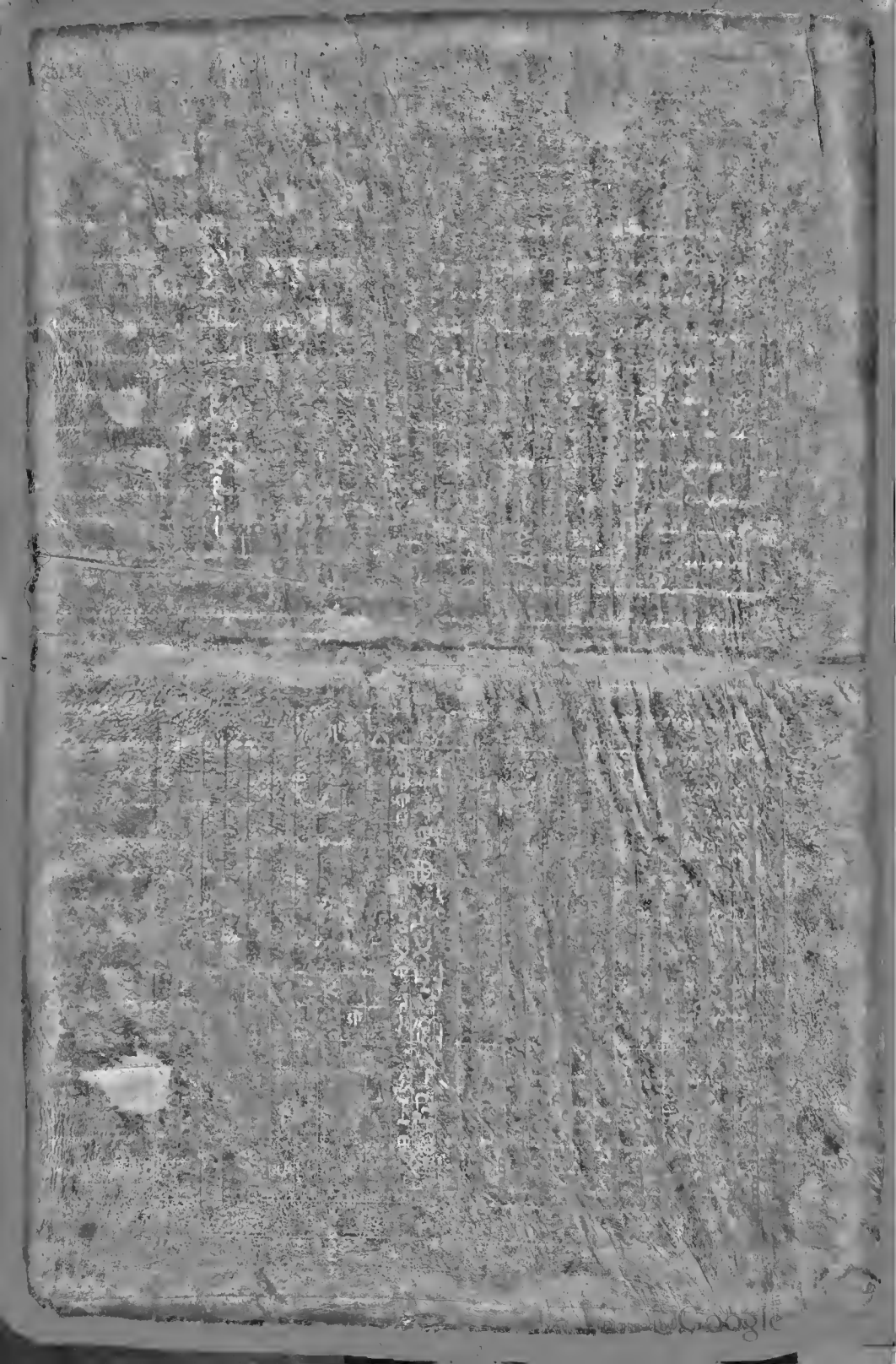
*[Faint, mostly illegible text in the lower section of the page.]*

11

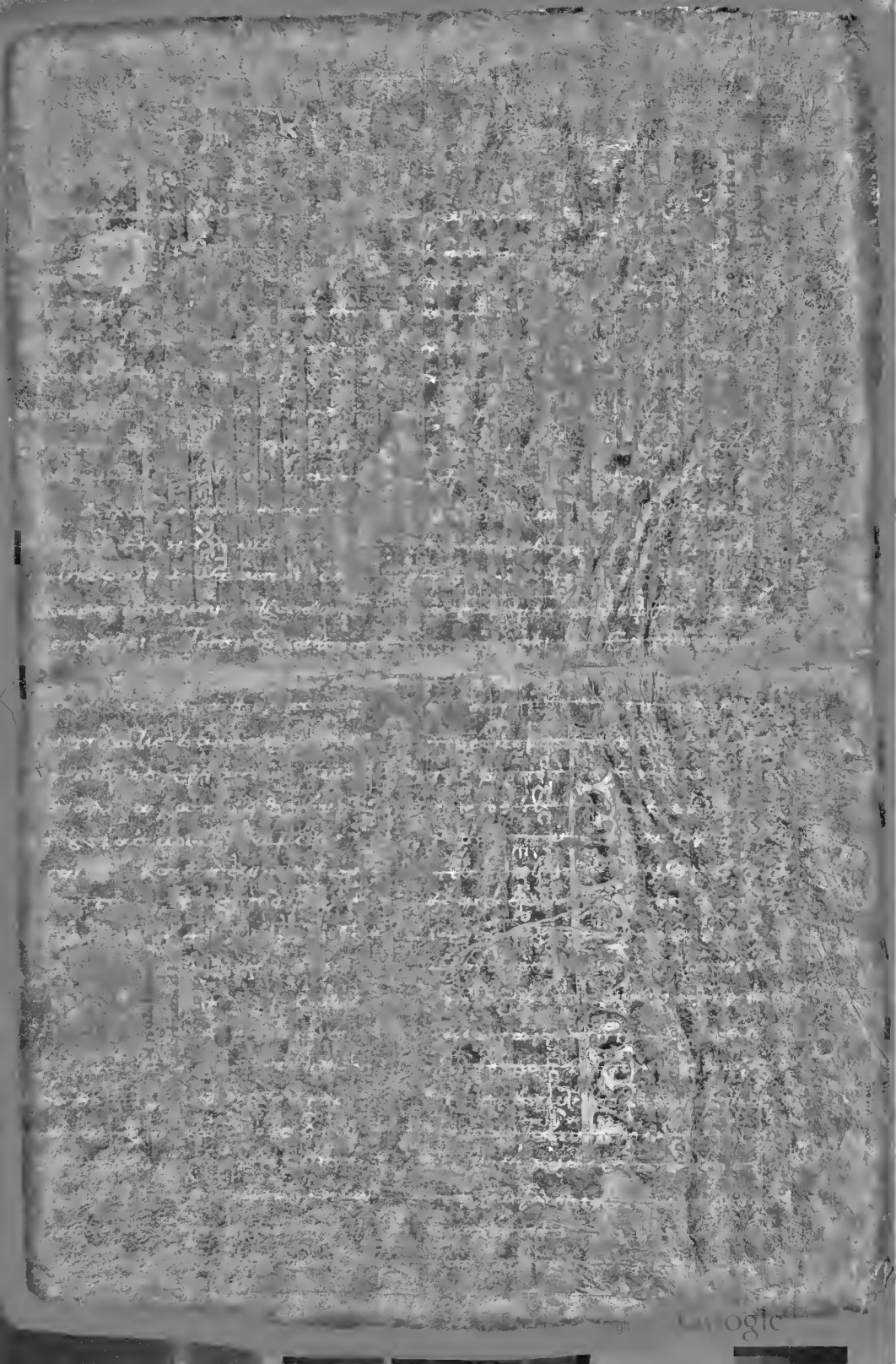
... τοις ἰουδαίοις ἀπελάττει τὸν  
 πατέρα σου ἔμελλε κἀγὼ ἀπολαττεῖν  
 σε ἵνα οὐκ εἴδῃς πρόσωπον ἐμοῦ ἕως  
 τῆς ἡμέρας τῆς ἀποκαταστάσεως  
 τοῦ οὐρανοῦ καὶ τῆς γῆς  
 καὶ ἐκεῖνος ἀπελάττει τὸν  
 ἰησοῦν καὶ λέγει οὐκ εἰσὶν  
 ἡμεῖς ἰουδαῖοι ἀλλὰ οὐράνοιοι  
 οὐκ εἴδωμεν πρόσωπον ἀνθρώπου  
 ἀλλὰ ἀποκαταστάμεθα ἵνα ἴδωμεν  
 τὸν ἀνθρώπον τοῦ ὕψους  
 καὶ οὗτος ἀπελάττει τὸν  
 ἀβραάμ λέγων οὐκ εἴδωμεν πρόσωπον

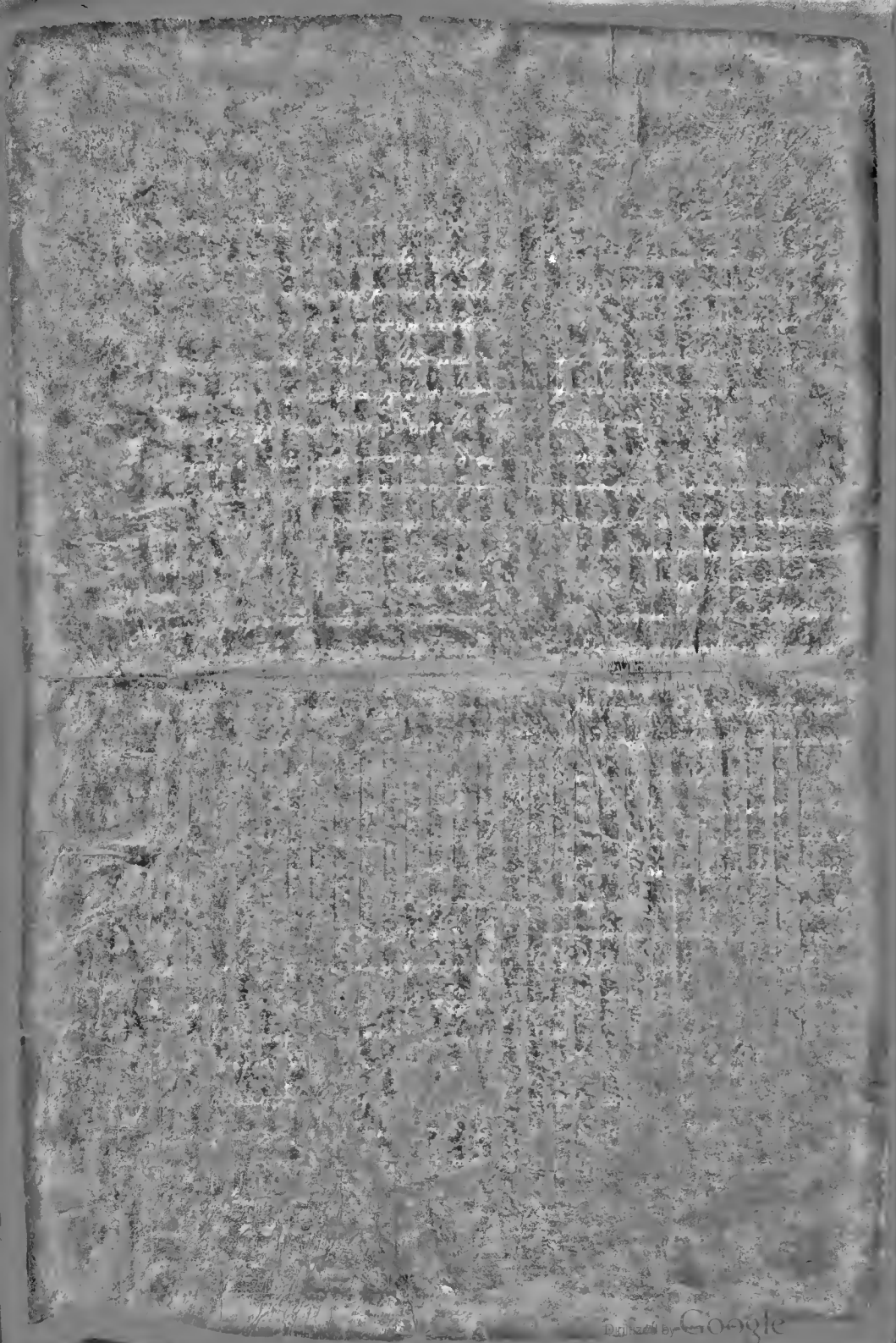
ἀνθρώπου ἀλλὰ ἀποκαταστάμεθα ἵνα  
 ἴδωμεν τὸν ἀνθρώπον τοῦ ὕψους  
 καὶ οὗτος ἀπελάττει τὸν  
 ἀβραάμ λέγων οὐκ εἴδωμεν πρόσωπον  
 ἀνθρώπου ἀλλὰ ἀποκαταστάμεθα ἵνα  
 ἴδωμεν τὸν ἀνθρώπον τοῦ ὕψους  
 καὶ οὗτος ἀπελάττει τὸν ἀβραάμ  
 λέγων οὐκ εἴδωμεν πρόσωπον ἀνθρώπου  
 ἀλλὰ ἀποκαταστάμεθα ἵνα ἴδωμεν  
 τὸν ἀνθρώπον τοῦ ὕψους





*[The page contains several columns of handwritten text in a cursive script, which is extremely faded and difficult to decipher. The text appears to be organized into paragraphs or sections, but the specific words and sentences are illegible due to the low contrast and wear of the document.]*

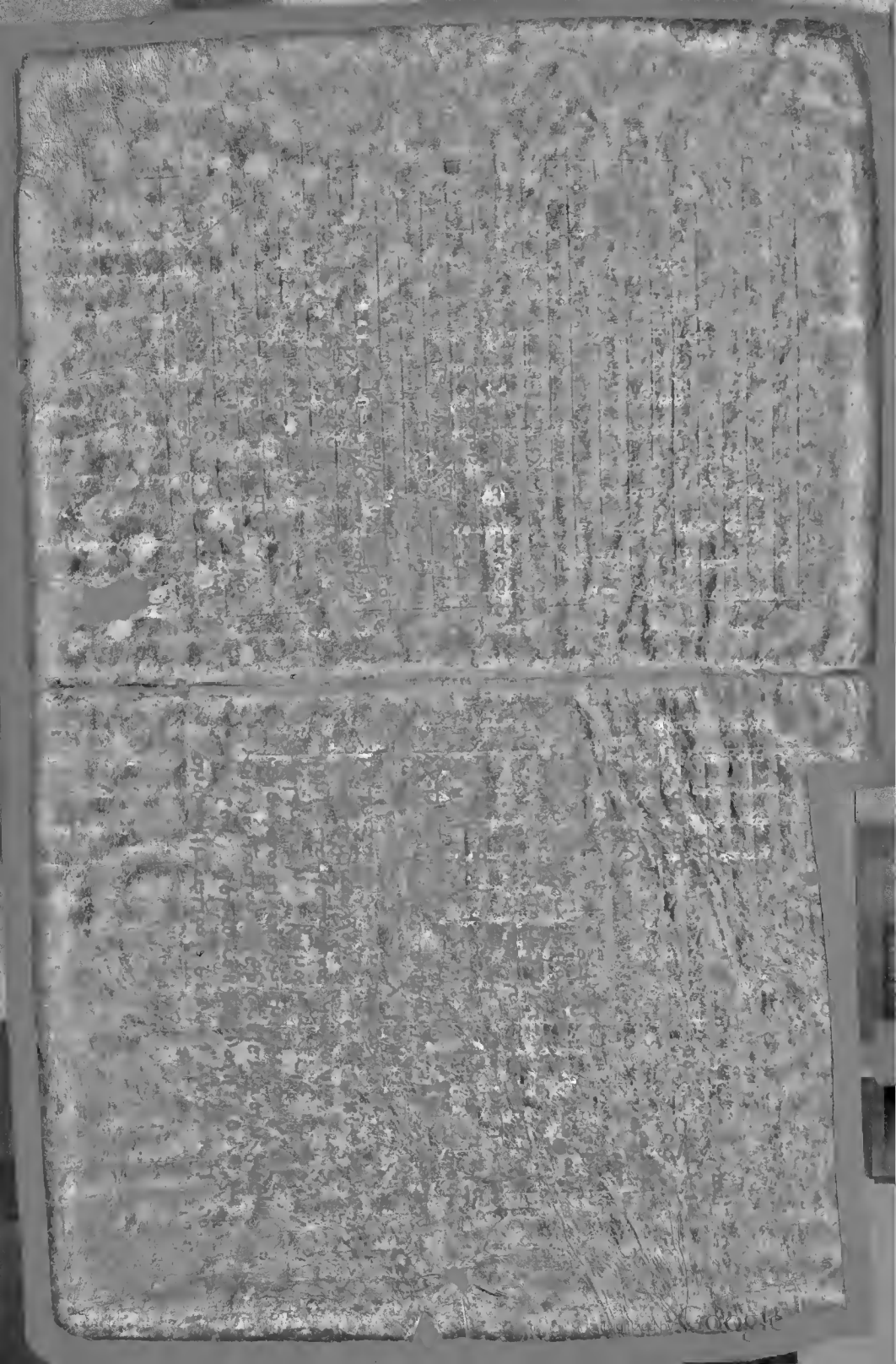


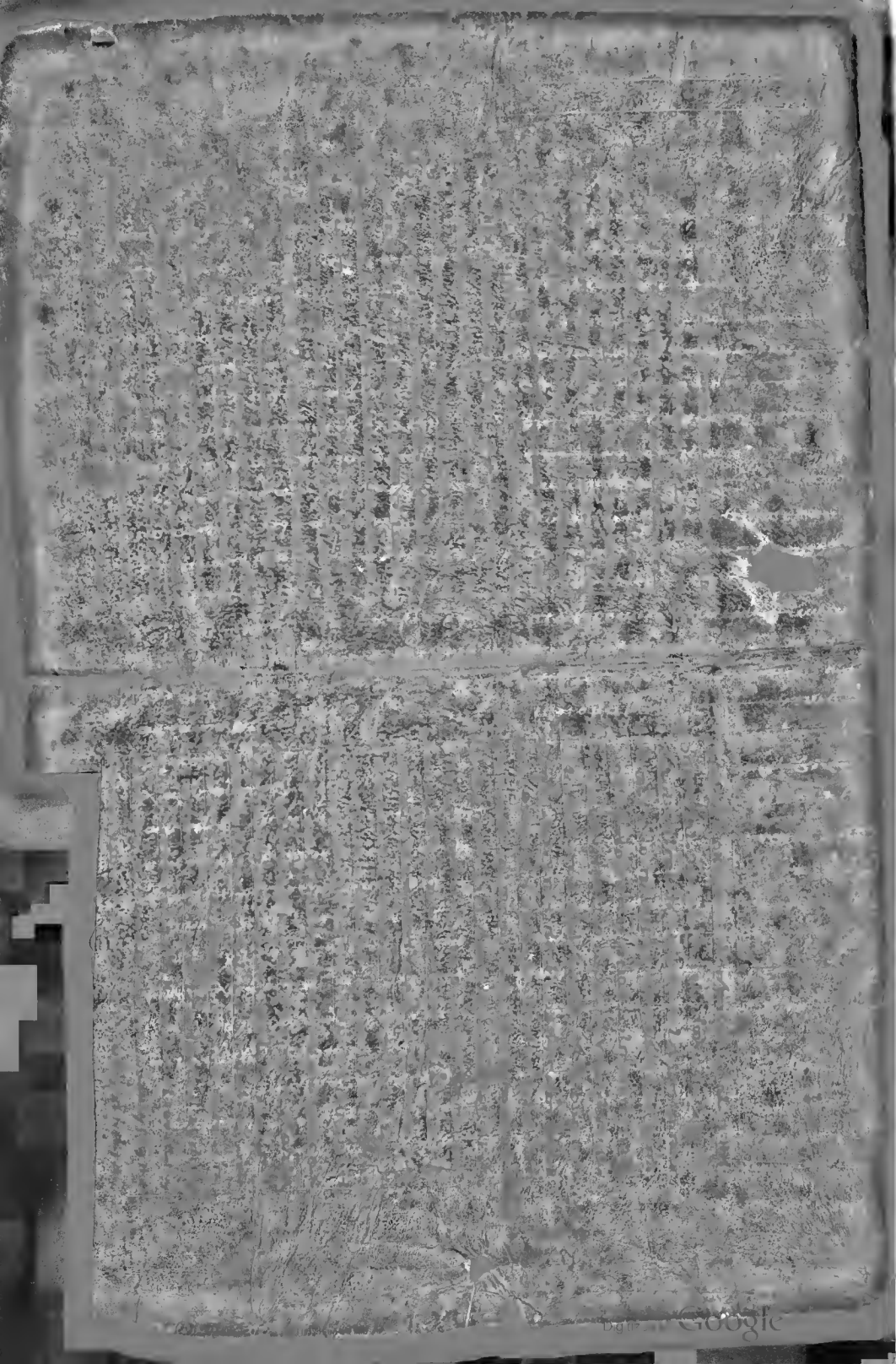


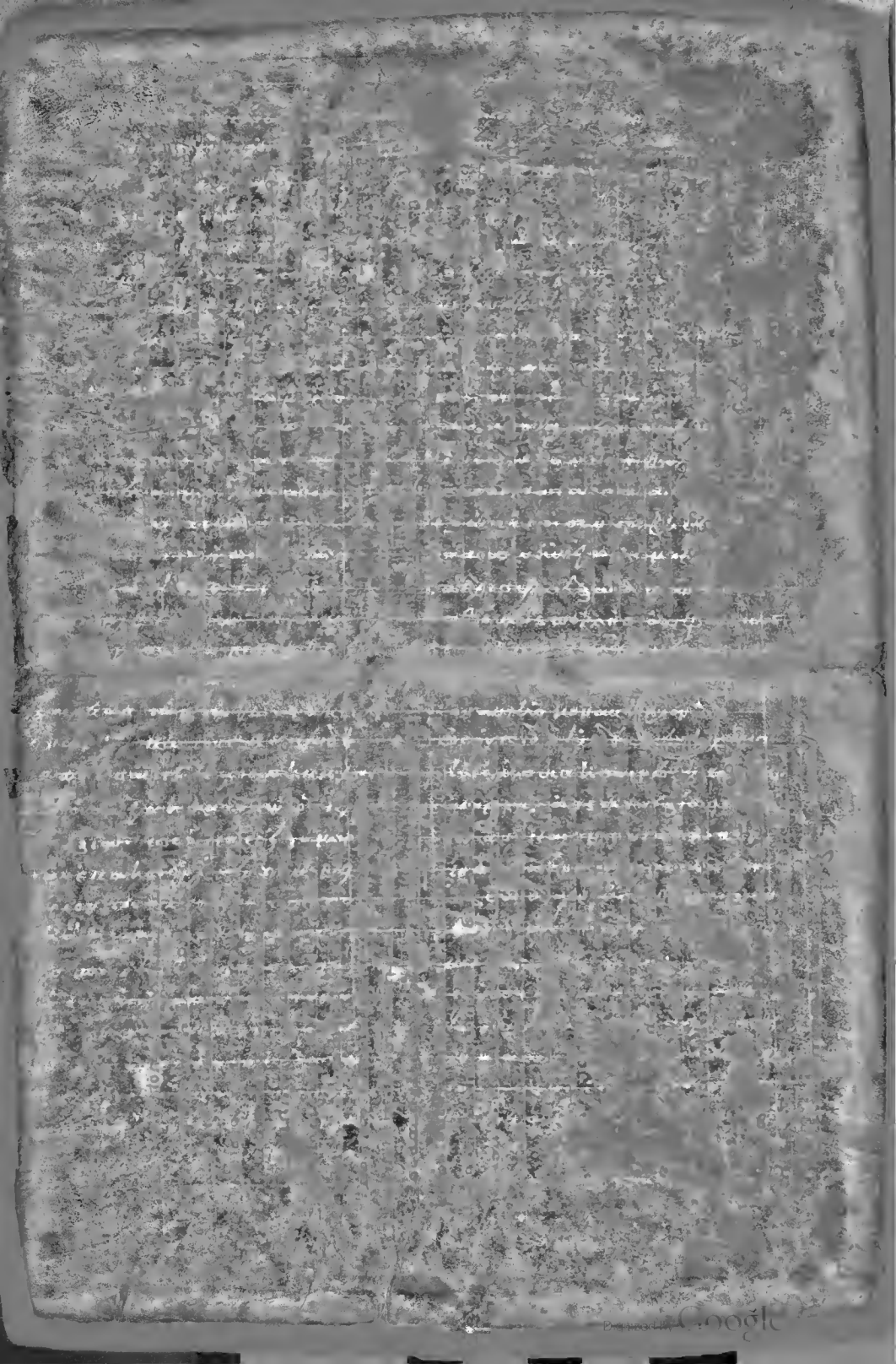
Handwritten text in a cursive script, likely a historical document or manuscript. The text is arranged in several lines and is significantly faded and obscured by the texture and wear of the parchment or paper. Some legible fragments include "AN" and "AN".

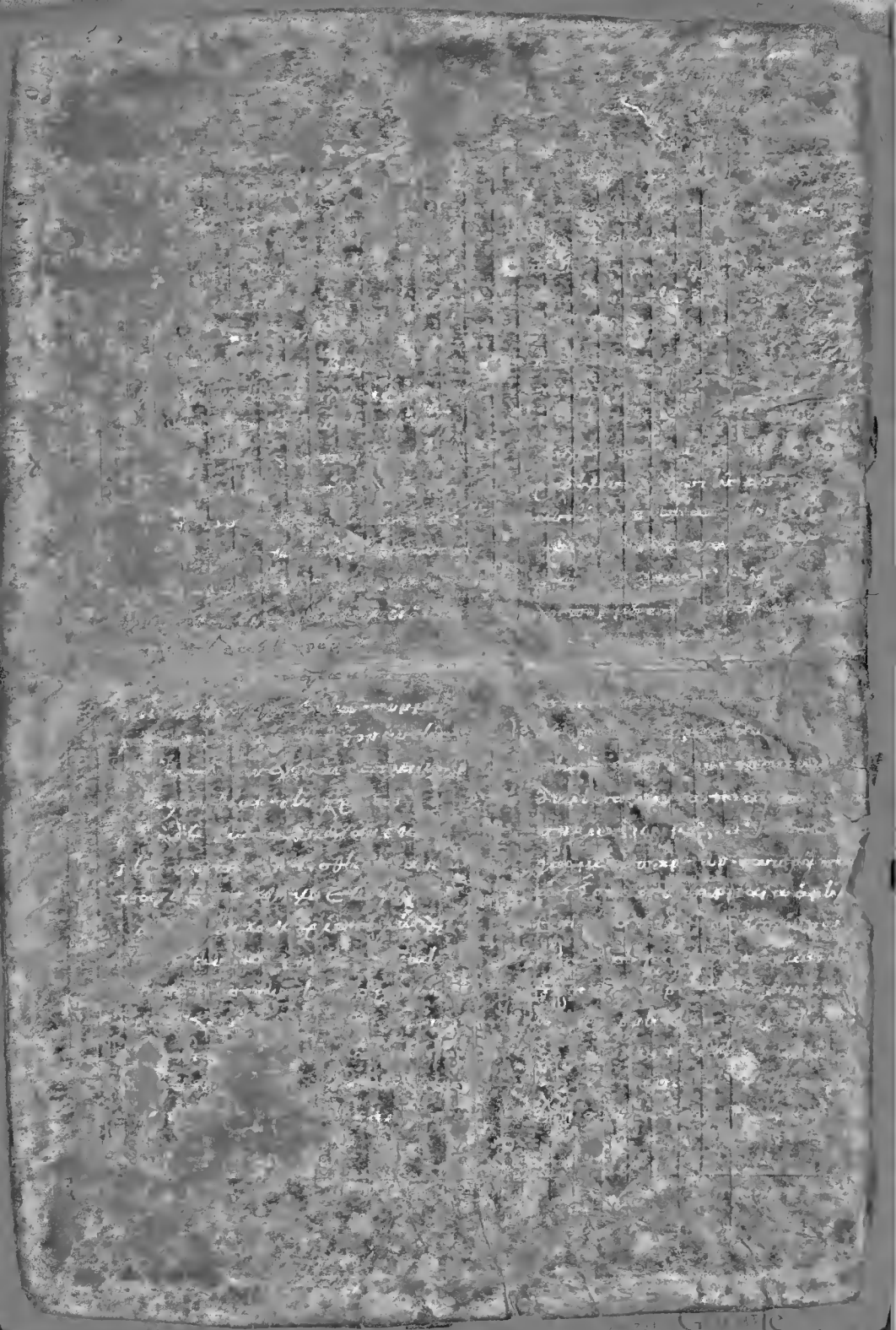
Handwritten text in a cursive script, continuing from the upper section. The text is arranged in several lines and is significantly faded and obscured by the texture and wear of the parchment or paper. Some legible fragments include "AN" and "AN".











Handwritten text in a cursive script, likely a list or account, with several lines of entries.

Handwritten text in a cursive script, continuing the list or account, with several lines of entries.

Handwritten text in a cursive script, continuing the list or account, with several lines of entries.

Handwritten text in a cursive script, continuing the list or account, with several lines of entries.

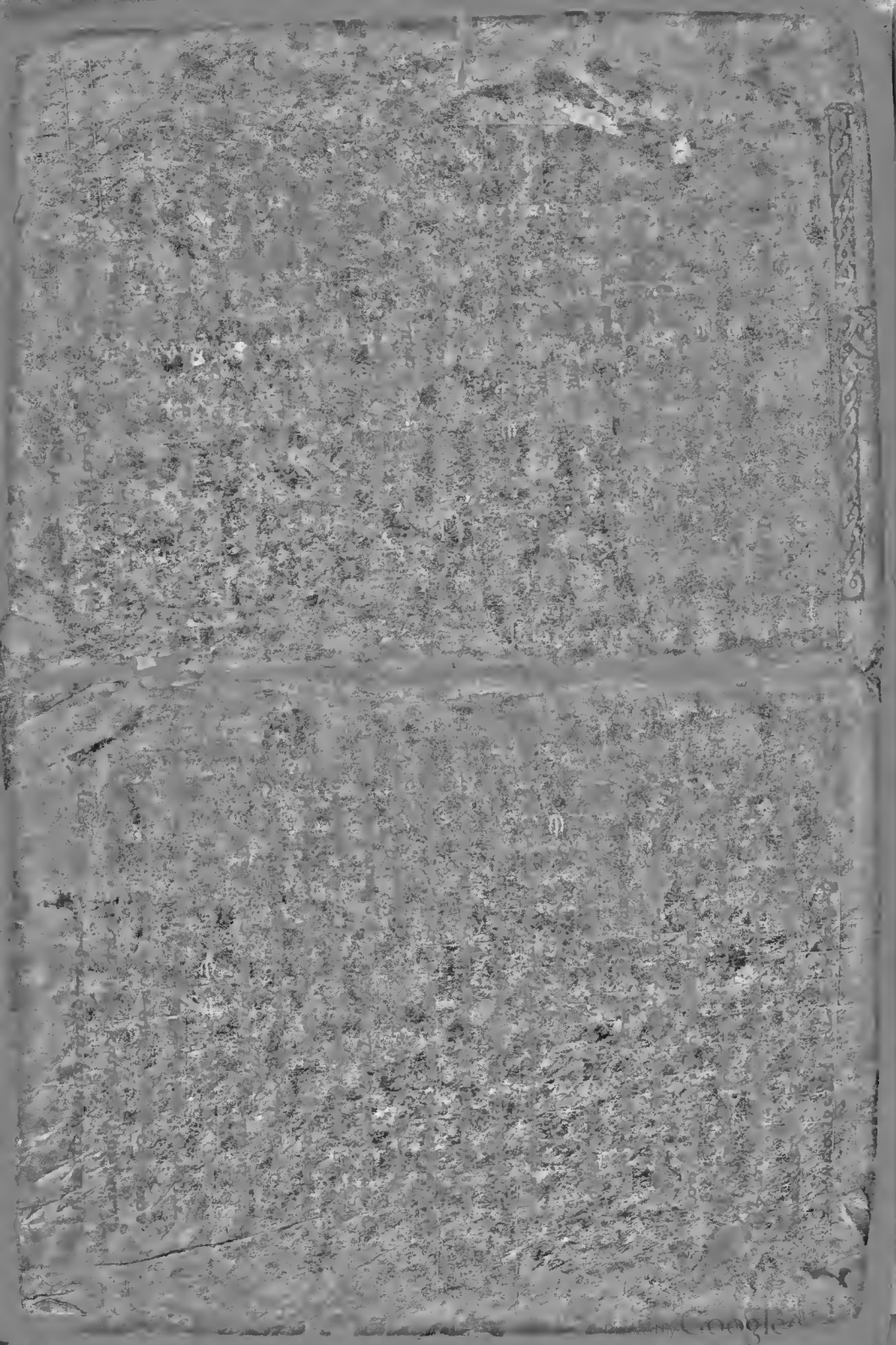
Handwritten text in a cursive script, continuing the list or account, with several lines of entries.

Handwritten text in a cursive script, continuing the list or account, with several lines of entries.

Handwritten text in a vertical column, possibly a list or index, with some characters resembling 'A', 'B', 'C', 'D', 'E', 'F', 'G', 'H', 'I', 'J', 'K', 'L', 'M', 'N', 'O', 'P', 'Q', 'R', 'S', 'T', 'U', 'V', 'W', 'X', 'Y', 'Z'.

Handwritten text in a vertical column, possibly a list or index, with some characters resembling 'A', 'B', 'C', 'D', 'E', 'F', 'G', 'H', 'I', 'J', 'K', 'L', 'M', 'N', 'O', 'P', 'Q', 'R', 'S', 'T', 'U', 'V', 'W', 'X', 'Y', 'Z'.







Handwritten text in the left margin, possibly a list or index.

11  
3  
5  
7  
9  
11  
13  
15  
17  
19  
21  
23  
25  
27  
29  
31  
33  
35  
37  
39  
41  
43  
45  
47  
49  
51  
53  
55  
57  
59  
61  
63  
65  
67  
69  
71  
73  
75  
77  
79  
81  
83  
85  
87  
89  
91  
93  
95  
97  
99

Handwritten text in two columns, likely a list or account. The text is extremely faded and mostly illegible. Some faint words like "Item" and "pro" are visible.

Handwritten text in two columns, continuing the list or account. The text is extremely faded and mostly illegible. Some faint words like "pro" and "Item" are visible.

Vertical handwritten text on the right margin, possibly a date or reference. Some faint characters like "1582" and "1583" are visible.

Folio

*[The page contains several columns of extremely faint, illegible text, likely bleed-through from the reverse side of the leaf. The text is arranged in approximately 10-12 columns across the page.]*

