

F 575

.M6 P6













PICTURESQUE

IRON AND COPPER MINING  
OF  
NORTHERN MICHIGAN.

PRINTED FROM RECENT NEGATIVES BY THE ALBERTYPE CO., NEW YORK.



36718 W

Published and Copyrighted, 1891, by A. Wittemann, 67 & 69 Spring St., N. Y.

E. J. MAC ADAM, WESTERN AGENT, MACKINAC ISLAND, MICH.







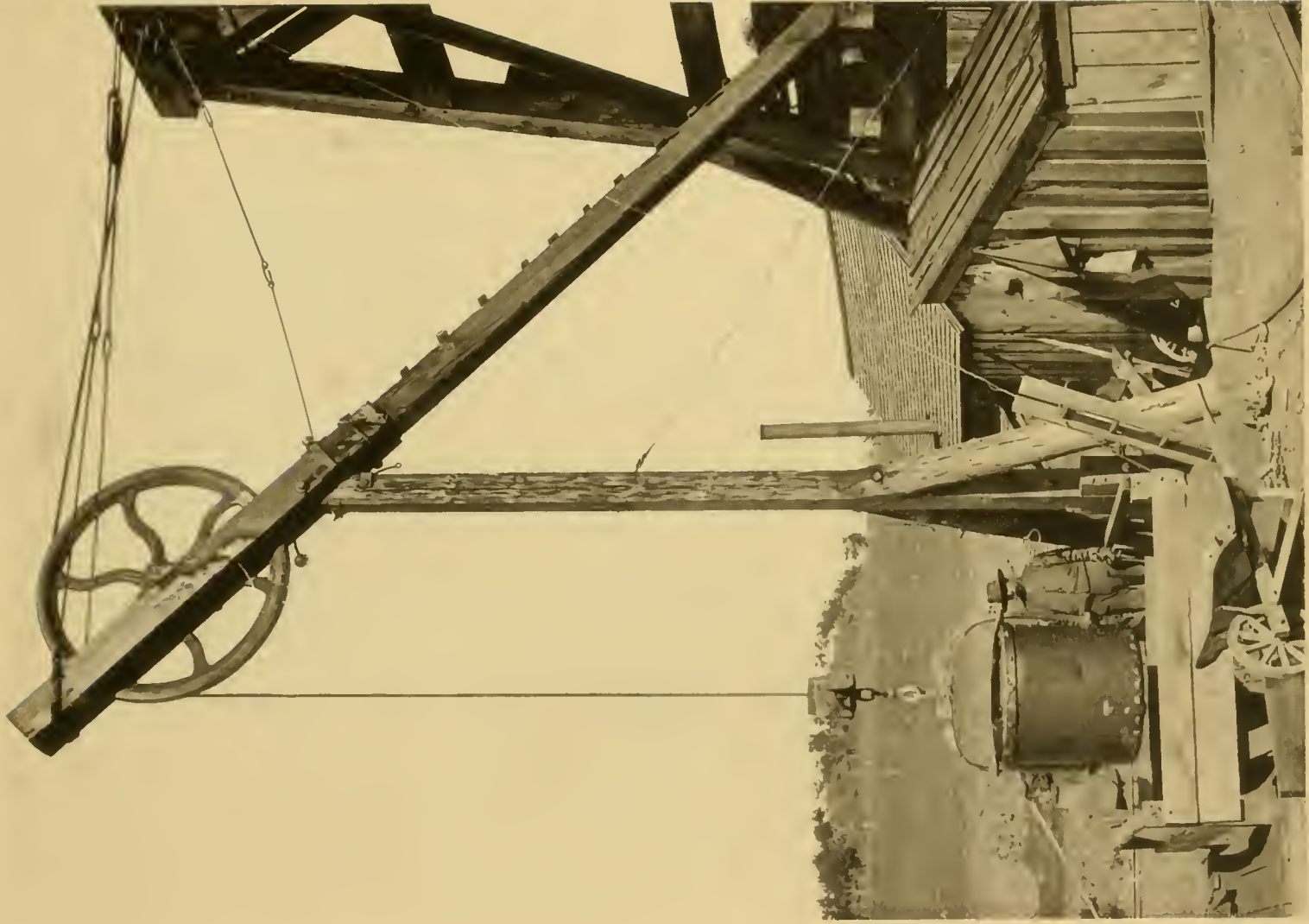
NEW ORE DOCK AT MARQUETTE.





MARQUETTE WEST FROM HOTEL MARQUETTE.





IRON ORE LIFT MEGAUNTT





NELSON IRON MINE, NEGAUNEE







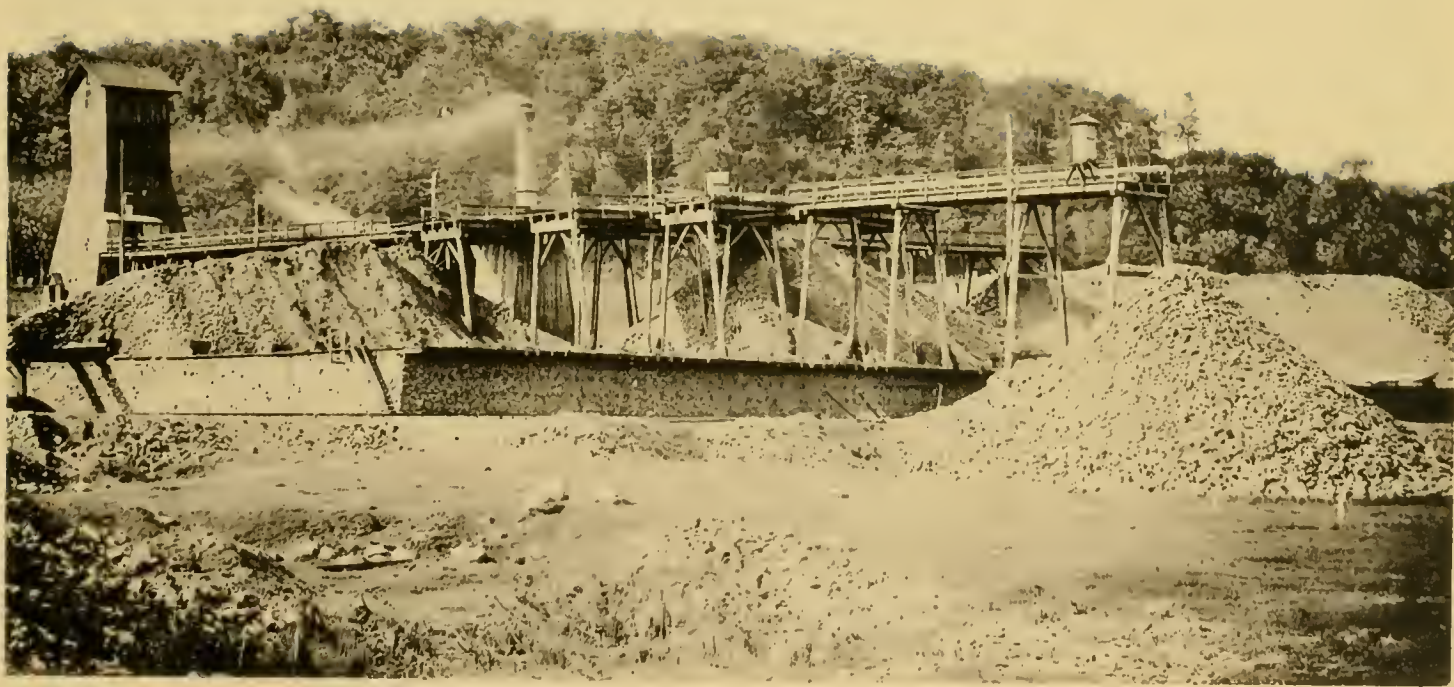
LOADING ORE ON RAILROAD TRAIN NEGAJ NEE





VIEW OF FISHPEMING LAKE SUPERIOR FROM THE FOREGROUND





BERT IRON MINE - ISHPEMING.





NEW YORK IRON MINE ISHPERING.







ISHPEMING





CLEVELAND IRON MINE ISHPEMING





TAMERICK MINE ROCK AND SHAFT HOUSE.

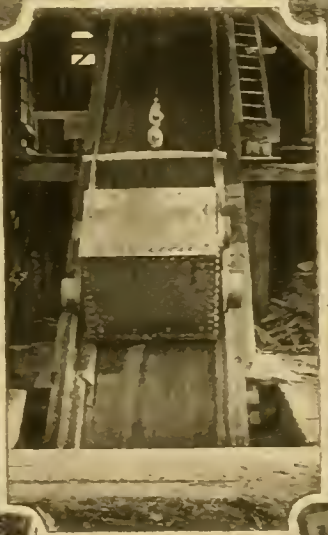
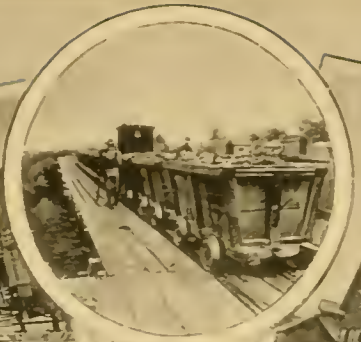




HOUGHTON







Quincy Street, Hancock  
Quincy Incline from Quincy Copper Mine

An Ore Train,  
Going Down for a Load—A Skip

Franklin Mine near Hancock,  
Copper Smelting Works at Hancock





HANCOCK, SEEN FROM HOUGHTON.





PUBLIC SCHOOL HOUSE AT HANCOCK





CLUMMET AND HULL ENGINE HOUSE CLUMMET







CALUMET AND HECLA MINES PUTTING LUMBER INTO THE MINES





CALUMET, LOOKING EAST FROM SHAFT 2





PAY OFFICE CALUMET MINING CO

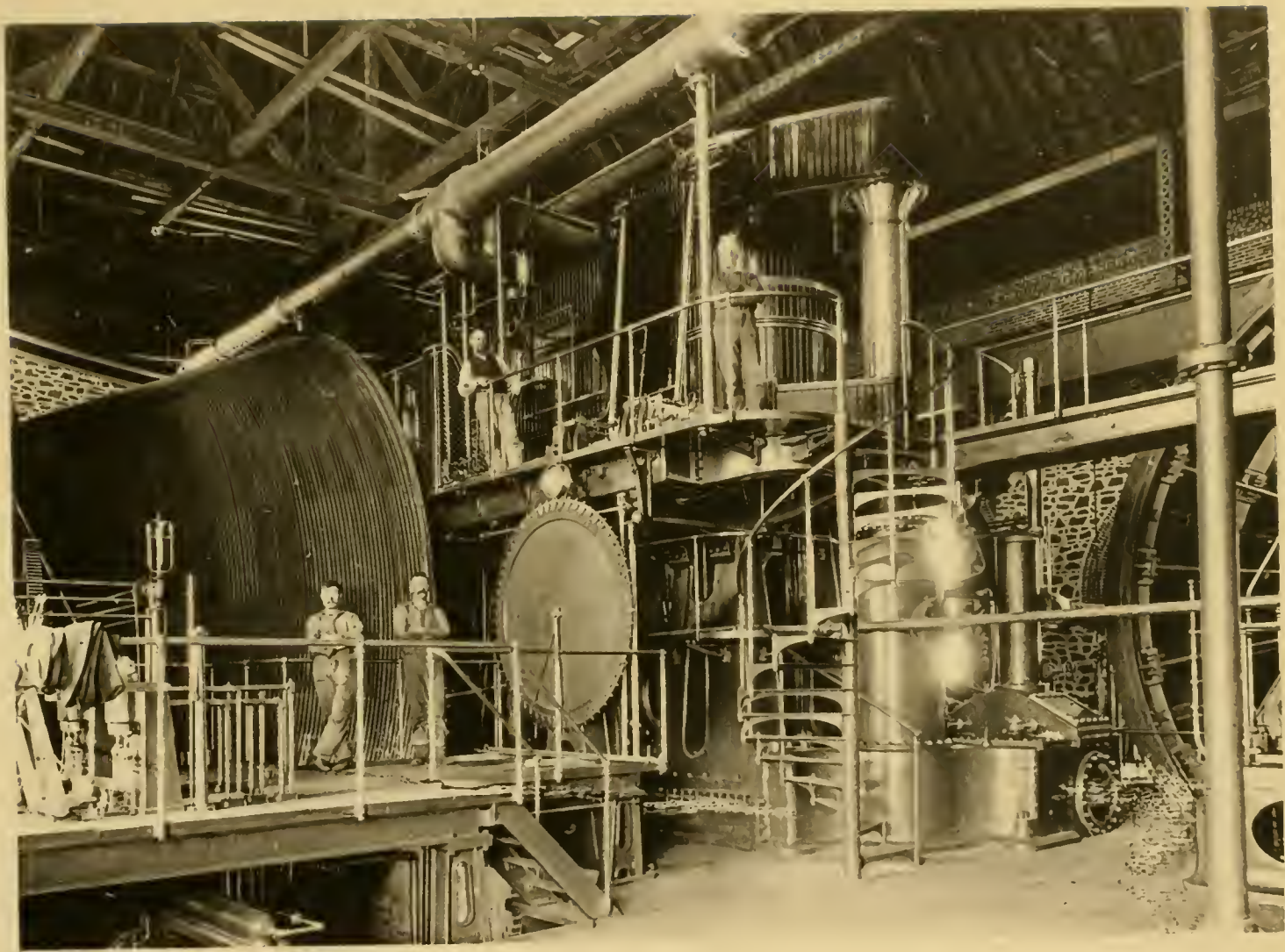




BLACK HILLS ENGINE HOUSE CALUMET







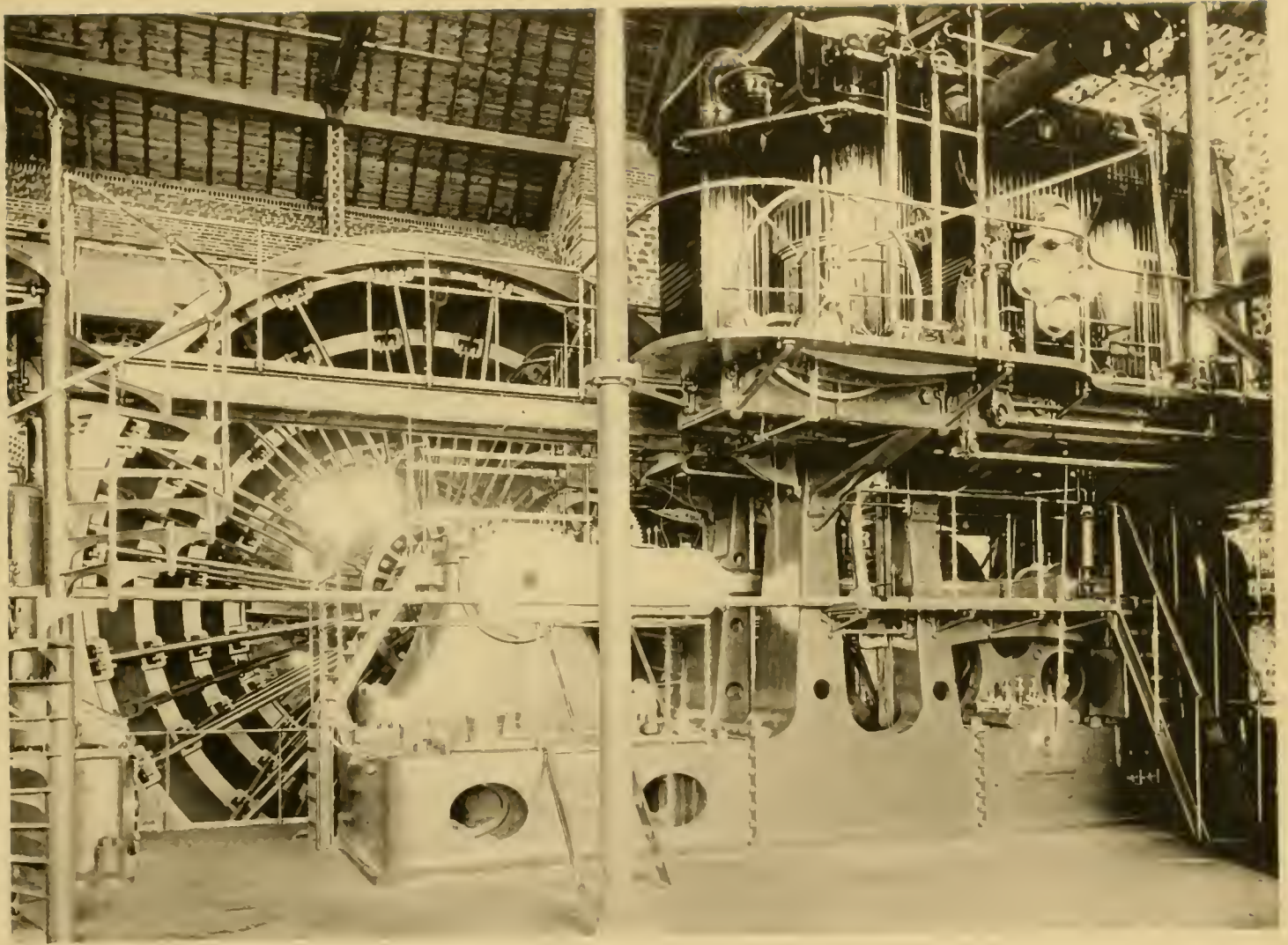
ENGINE ROOM OF THE CALUMET AND HECLA





ROCK HOUSE OF THE CALUMET AND PEORIA





JUMB ENGINE OF THE CALUMET AND HE





CALUMET CLUB HOUSE, CALUMET







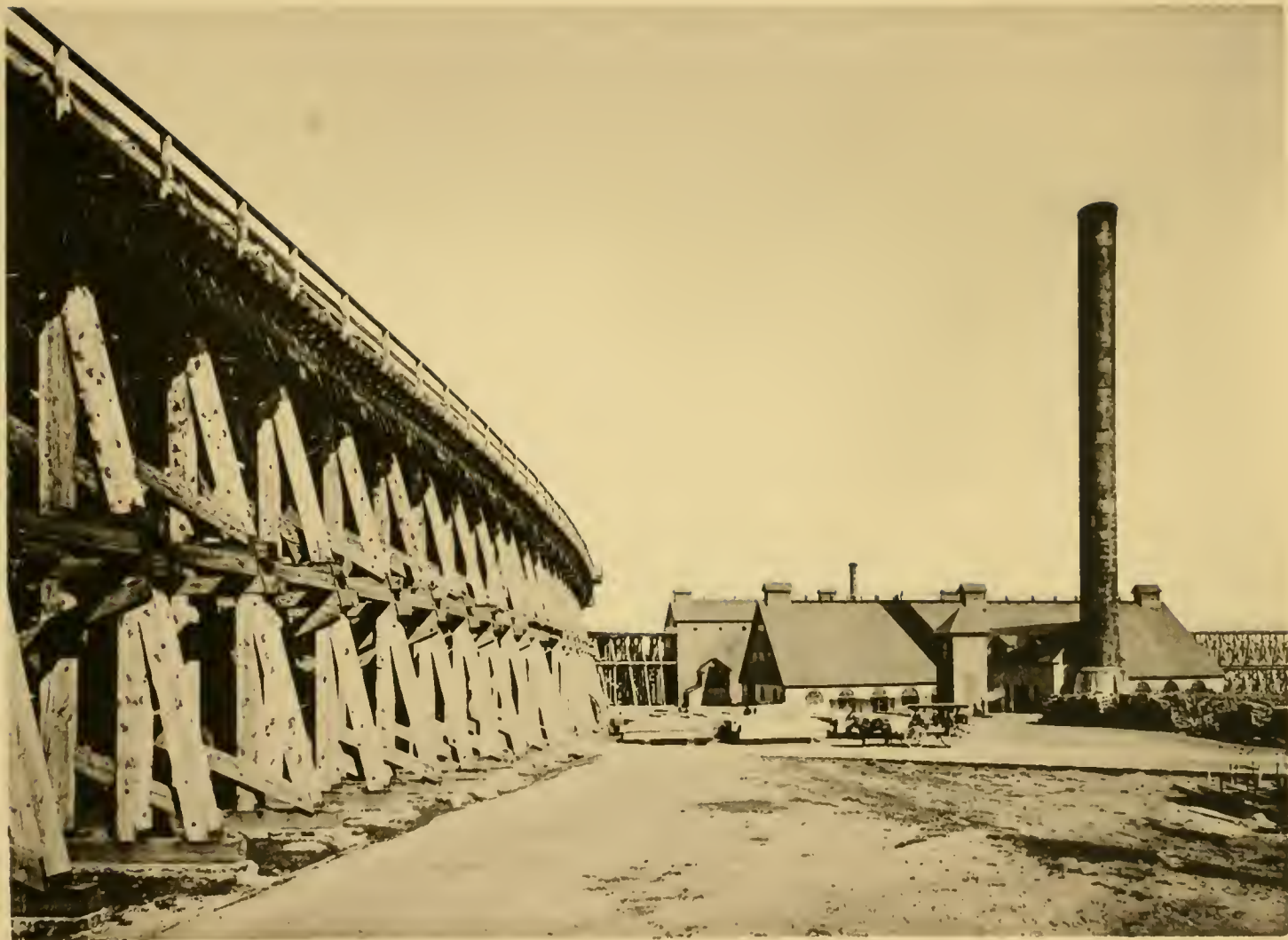
THE ROCK HOUSE AT BLACK HILLS EAST END OF CALUMET AND HECLA.





GRONE'S SMELTING WORKS SOUTH LAKE LINDEN





TRESTLE AND BOILER HOUSE LAKE LINDEN.





LAKE LINDEN STAMP MILL, LAKE LINDEN.







HAULING LUMBER TO GO INTO THE MINES.

RD 160.

R









DOBBS BROS.  
LIBRARY BINDING

JAN 76

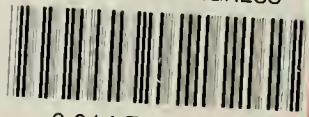
ST. AUGUSTINE

FLA.



32084

LIBRARY OF CONGRESS



0 014 754 646 4

