

# Geology of the Moon

Edward M. Murphy  
Department of Astronomy  
University of Virginia



6/24

2

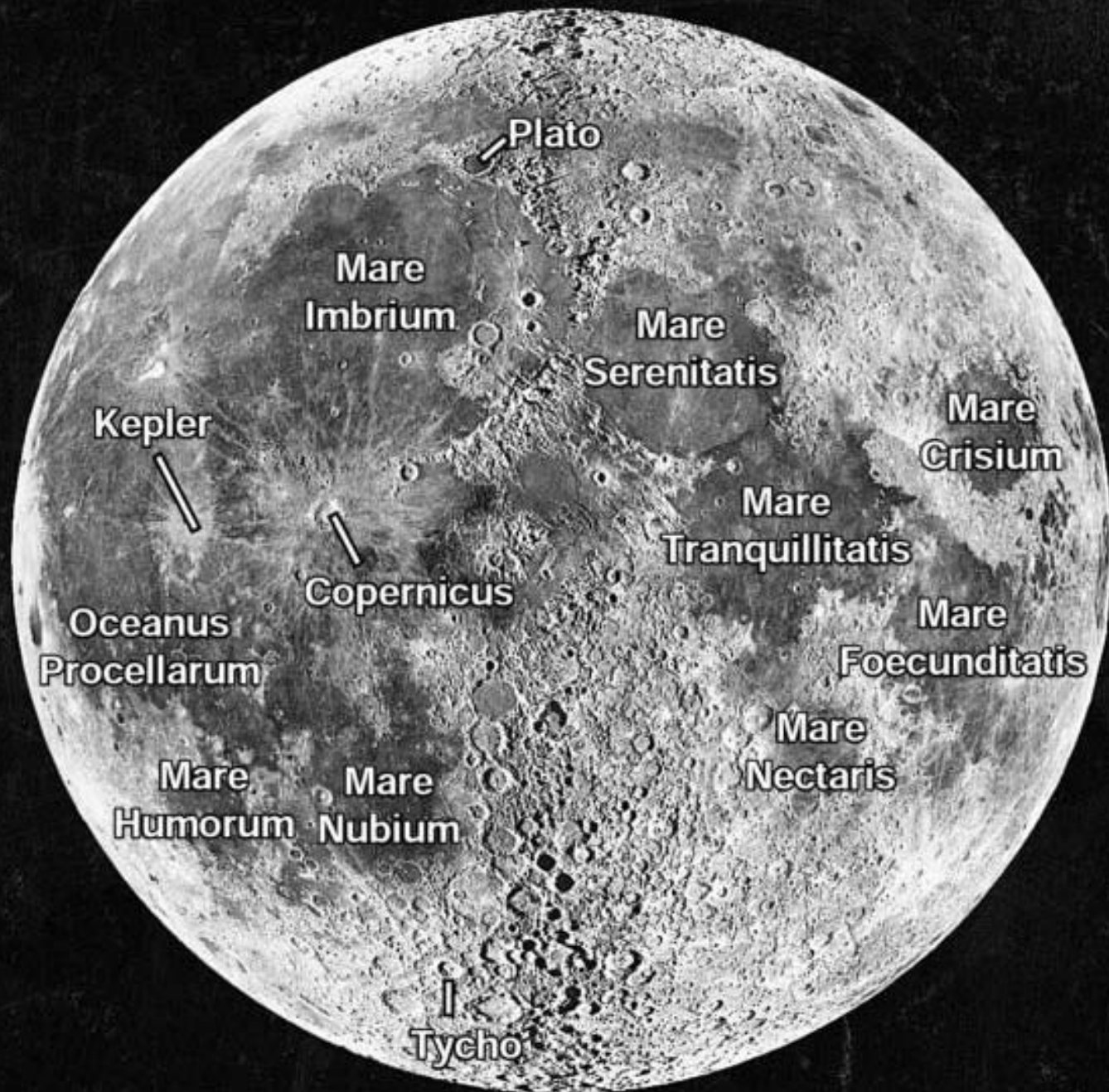


6/24

3

# Lunar Geology

- The near side of the Moon is dominated by two types of terrain.
  - The **maria** (singular mare) are smooth, dark lava flows that cover 17% of the Moon.
  - The brighter highlands (**terrae**) which are completely covered in craters.



# Grand Teton National Park, Wyoming



6/24/2005

The Geology of the Moon

6

# Blue Ridge Mountains, North Carolina



6/24/2005

The Geology of the Moon

7

# Age of the Lunar Surface

- The amount of cratering can be used to determine the age of the parts of the lunar surface.
  - The highlands have many more impact craters which means that they have been exposed to space longer (that is, they are older) than the maria.
  - Scientists can count the number of craters per square km and use that to determine the age of the surface.





6/24/2005

The Geology of the Moon

9



# Mare Imbrium lava flow



6/24/200

10

# Basalt lava flow, Hawaii



6/24/2005

The Geology of the Moon

11



# Highlands



6/24/2005

The Geology of the Moon

# Lunar Far Side

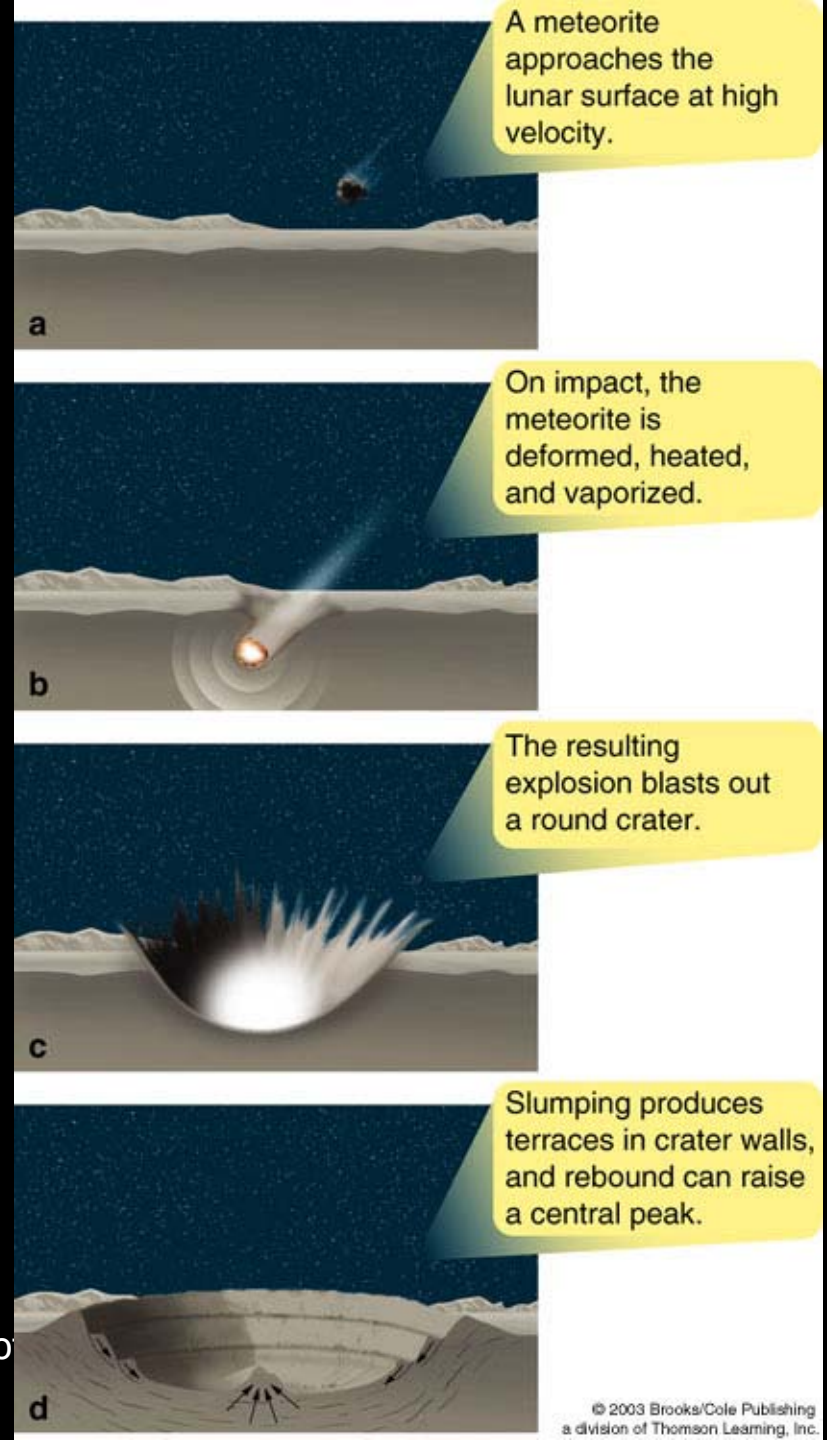


6/24/

# Impact Cratering

- Impact Craters are created when meteoroids, asteroids, and comets strike the moon.
  - The objects are typically traveling 10-20 km/s.
  - Very roughly, the crater is usually about 10 times the diameter of the impactor.

# Cratering



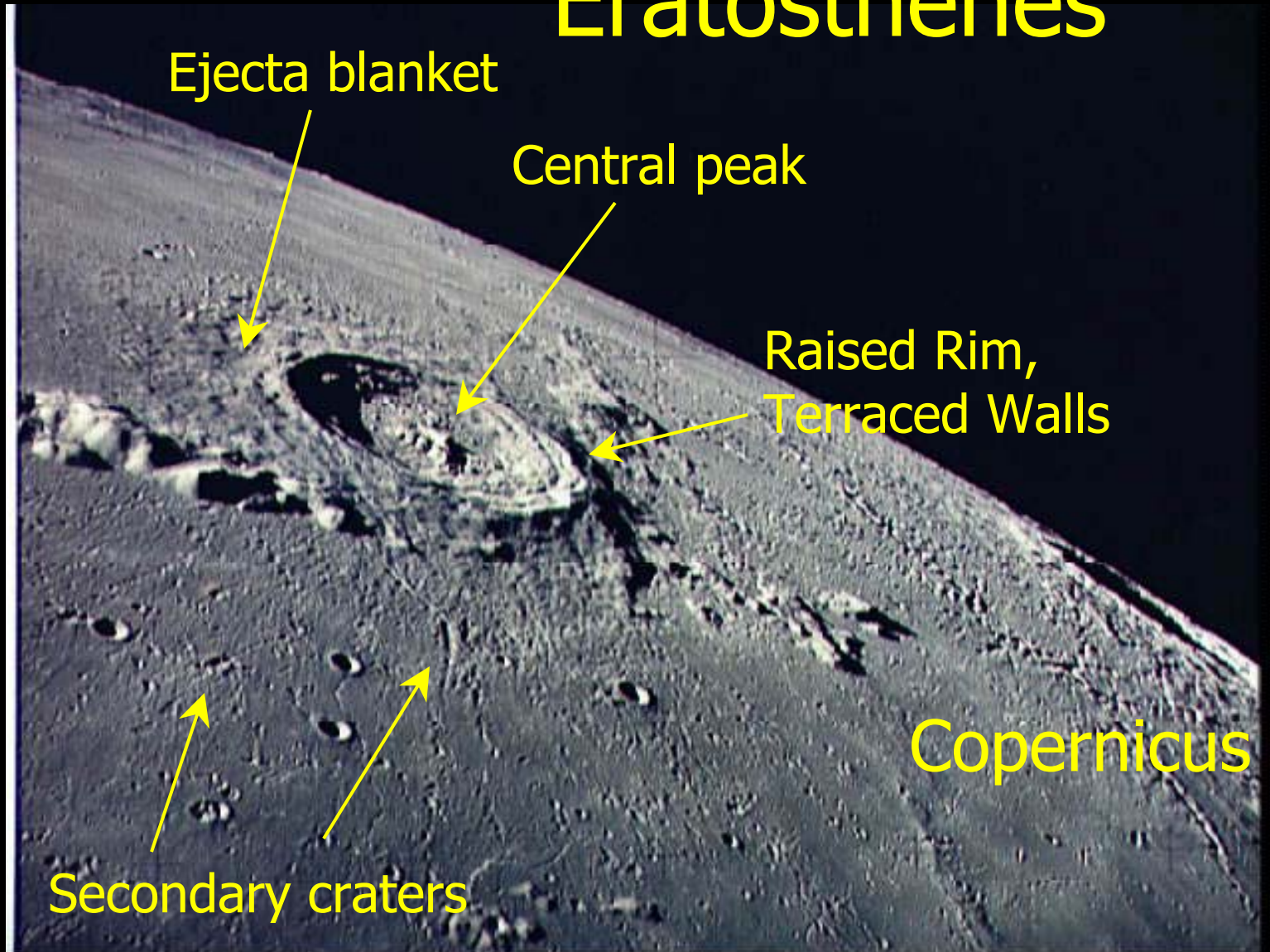
A meteorite approaches the lunar surface at high velocity.

On impact, the meteorite is deformed, heated, and vaporized.

The resulting explosion blasts out a round crater.

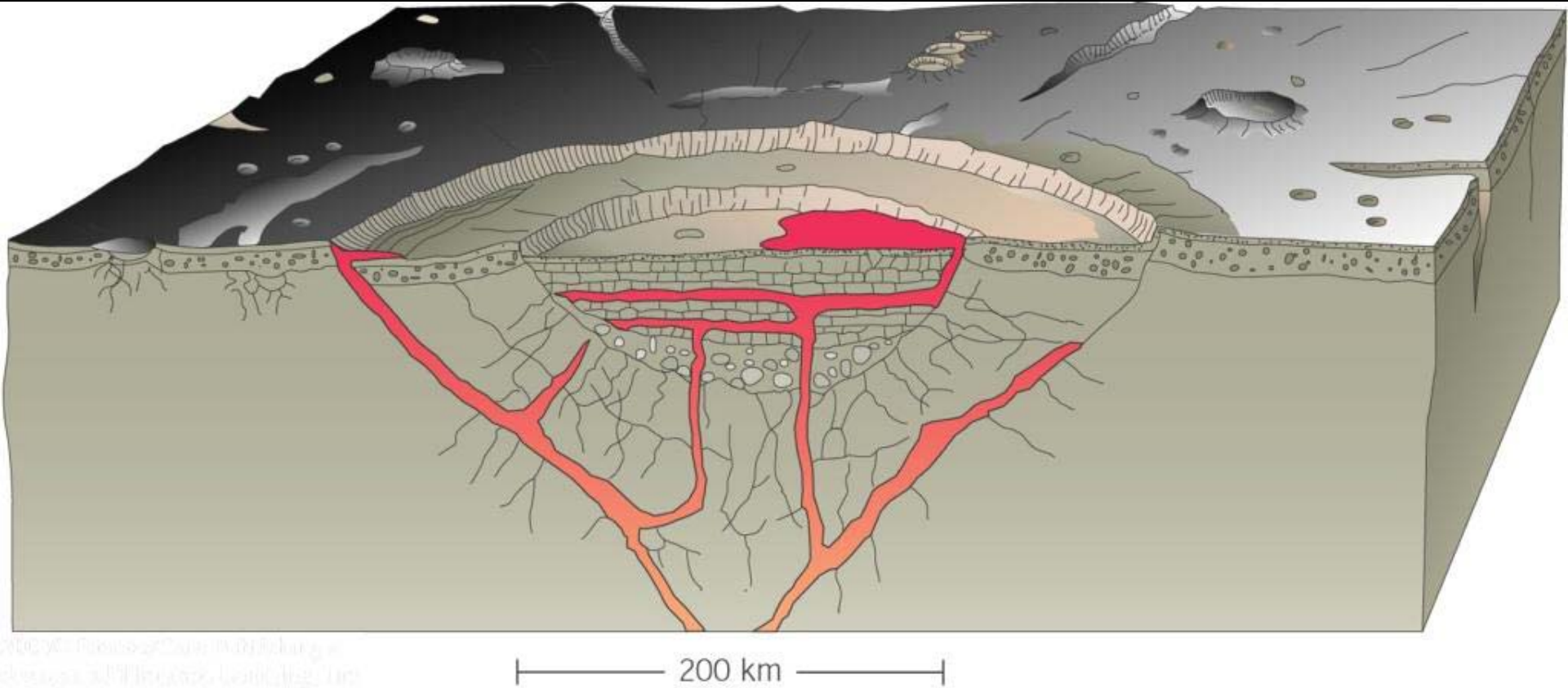
Slumping produces terraces in crater walls, and rebound can raise a central peak.

# Eratosthenes





# Impact Basin



# Oriente Basin



6/24/2005

# Mare Orientale



6/24/2005

# Why Doesn't the Earth Look Like This?





# Great Barringer Meteor Crater

- Located in Arizona
- Age  $49 \pm 3$  thousand years
- Diameter 1.2 km
- Created by an iron/nickel meteoroid 120-150 feet across traveling at 7 miles per second.

# Manicougan Crater



6/24/2005

The Geology of the Moon

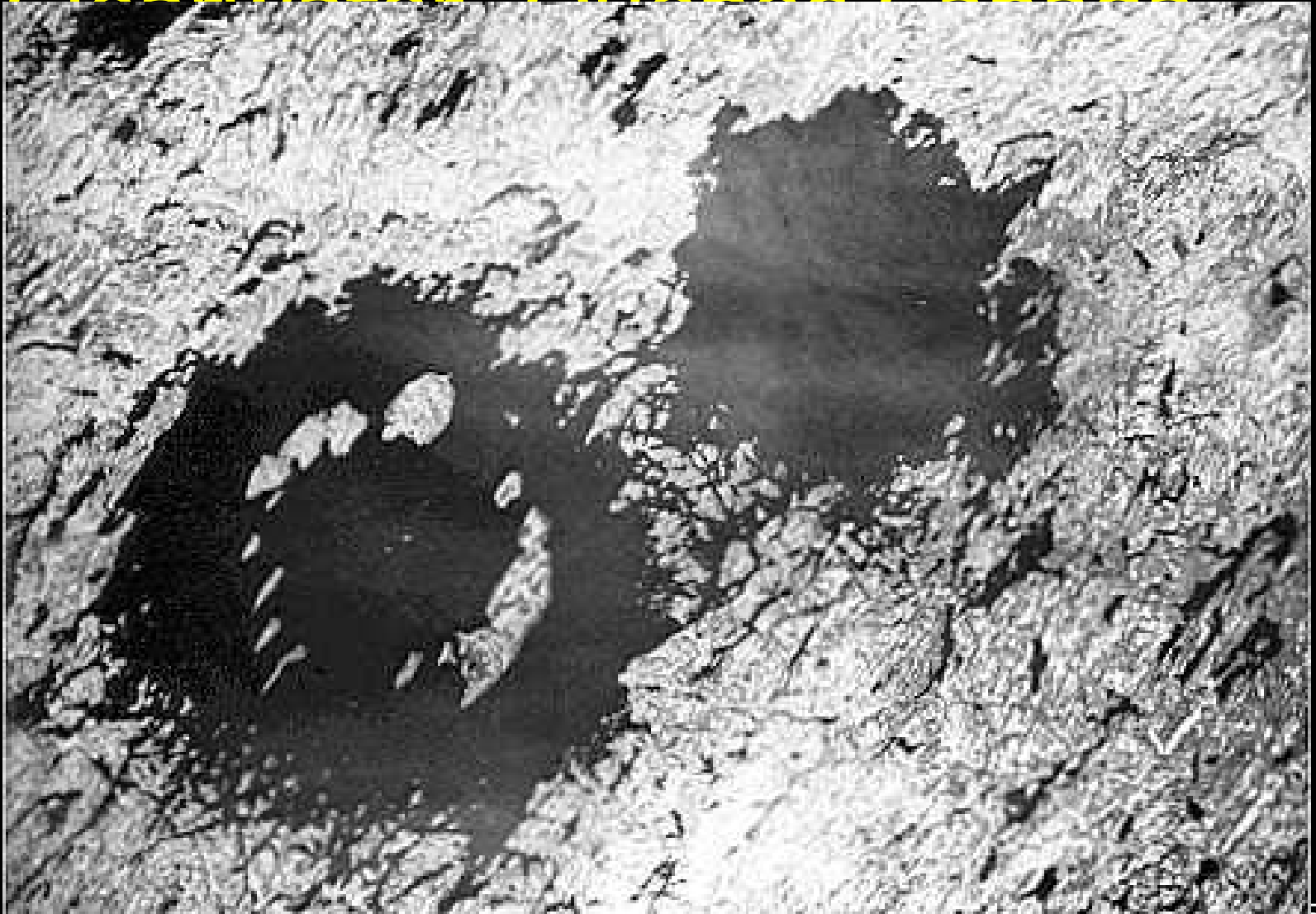
23

# Manicougan Crater

- Located in Quebec, Canada
- Age  $214 \pm 1$  million years
- Diameter 100 km



# Clearwater, Quebec, Canada



# Chicxulub Crater



NASA/JPL

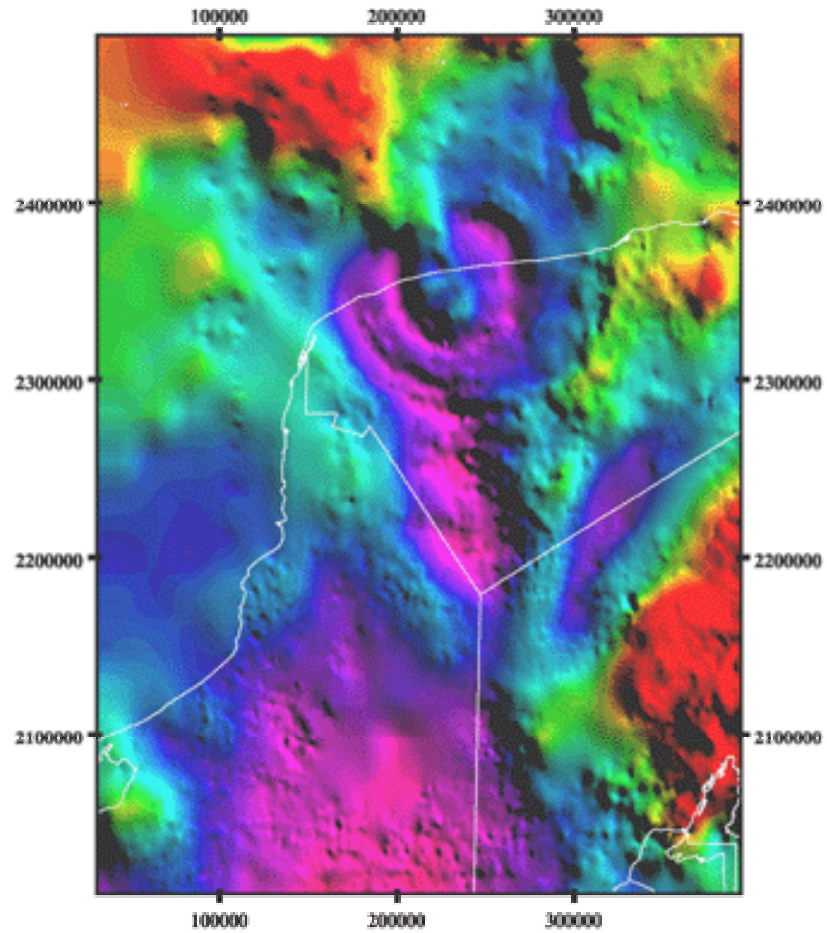
6/24/2005

The Geology of the Moon

26

# Chicxulub Crater

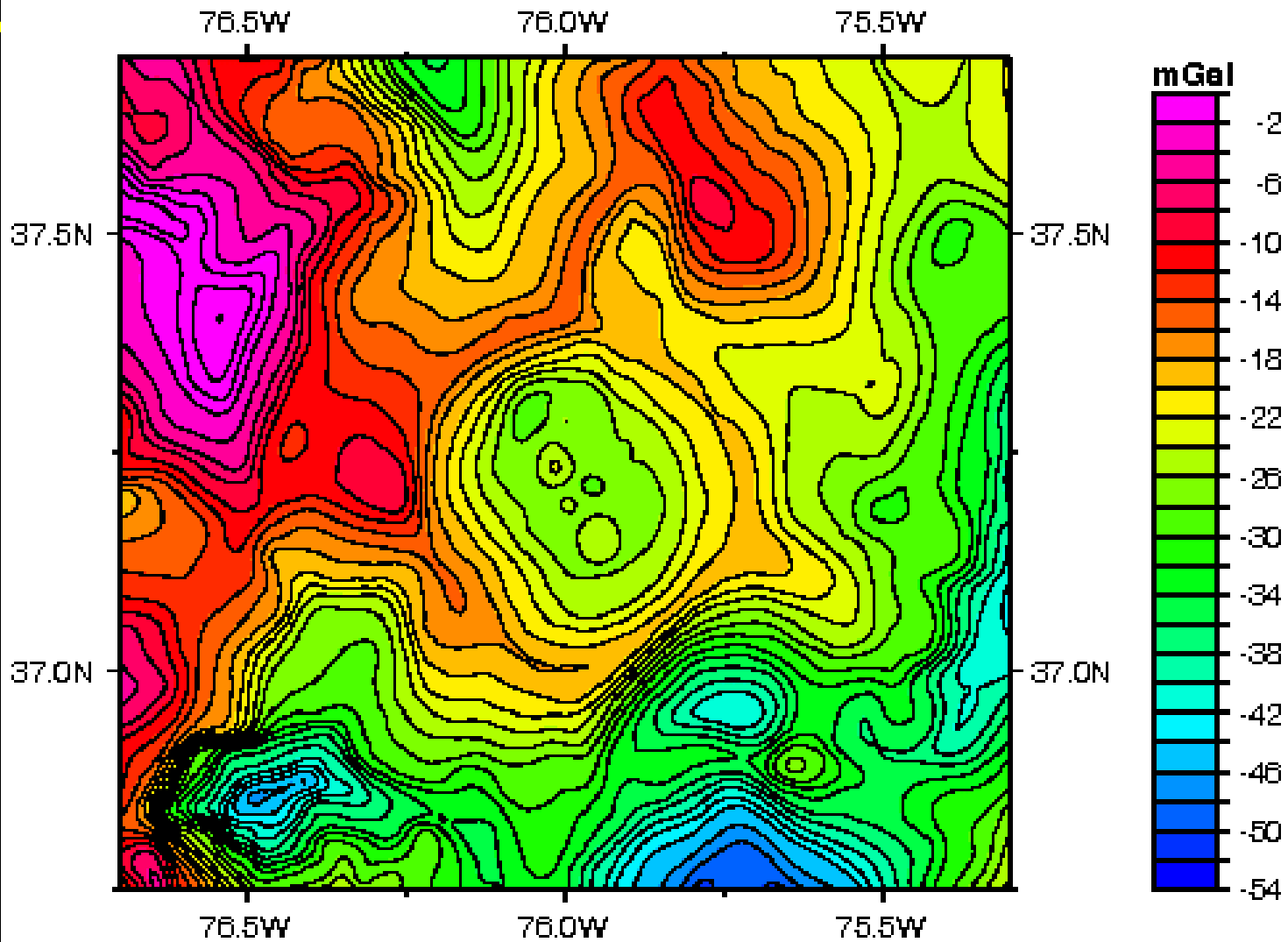




# Chicxulub Crater

- Located in Yucatan, Mexico
- Age  $64.98 \pm 0.05$  million years
- Diameter of 170 km

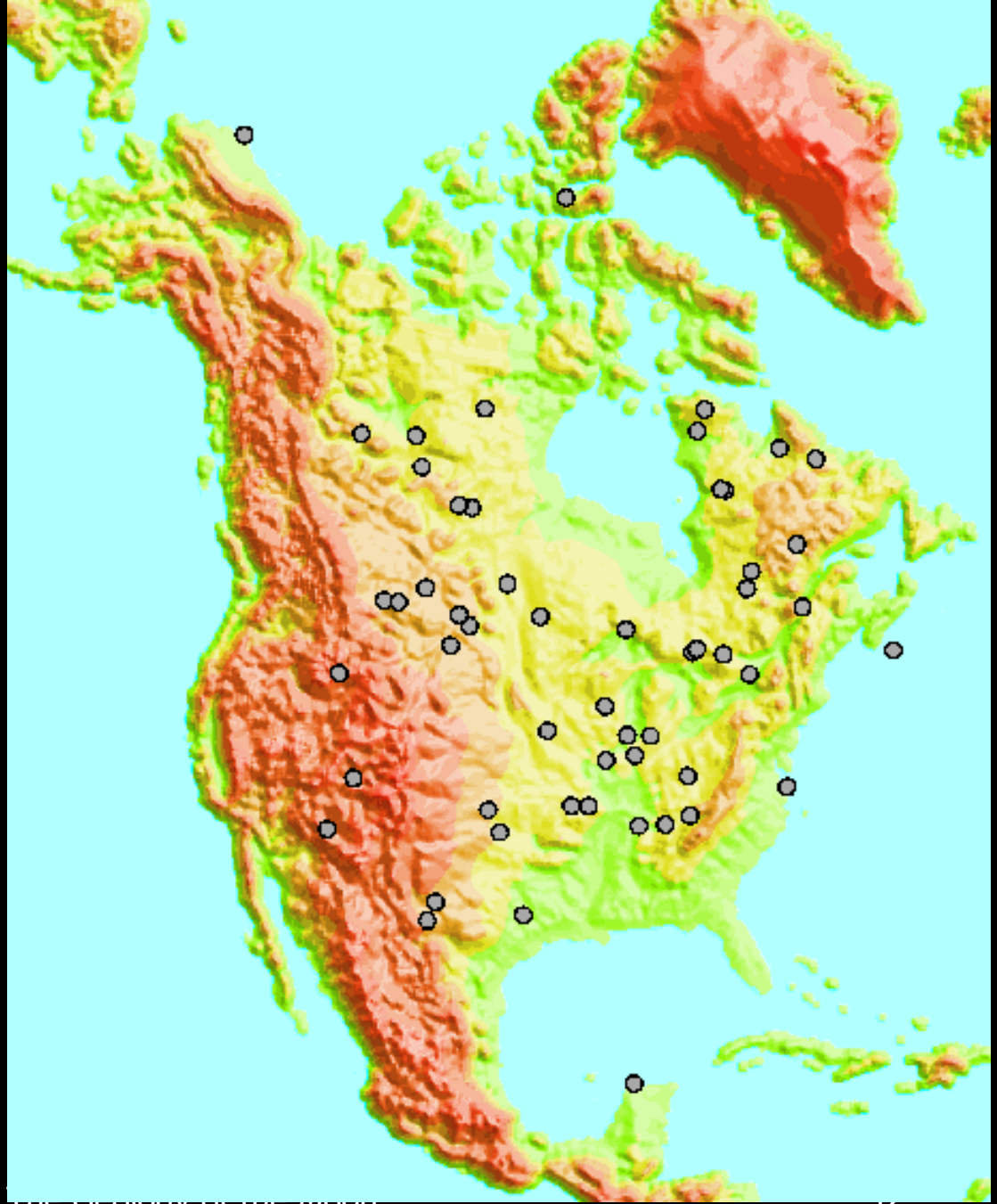
# Chesapeake Bay



# Chesapeake Bay

- Located in Virginia, USA
- Age  $35.5 \pm 0.6$  million years
- Diameter of 85 km

# North American Impact Craters



6/24/2005



# Vredefort Crater





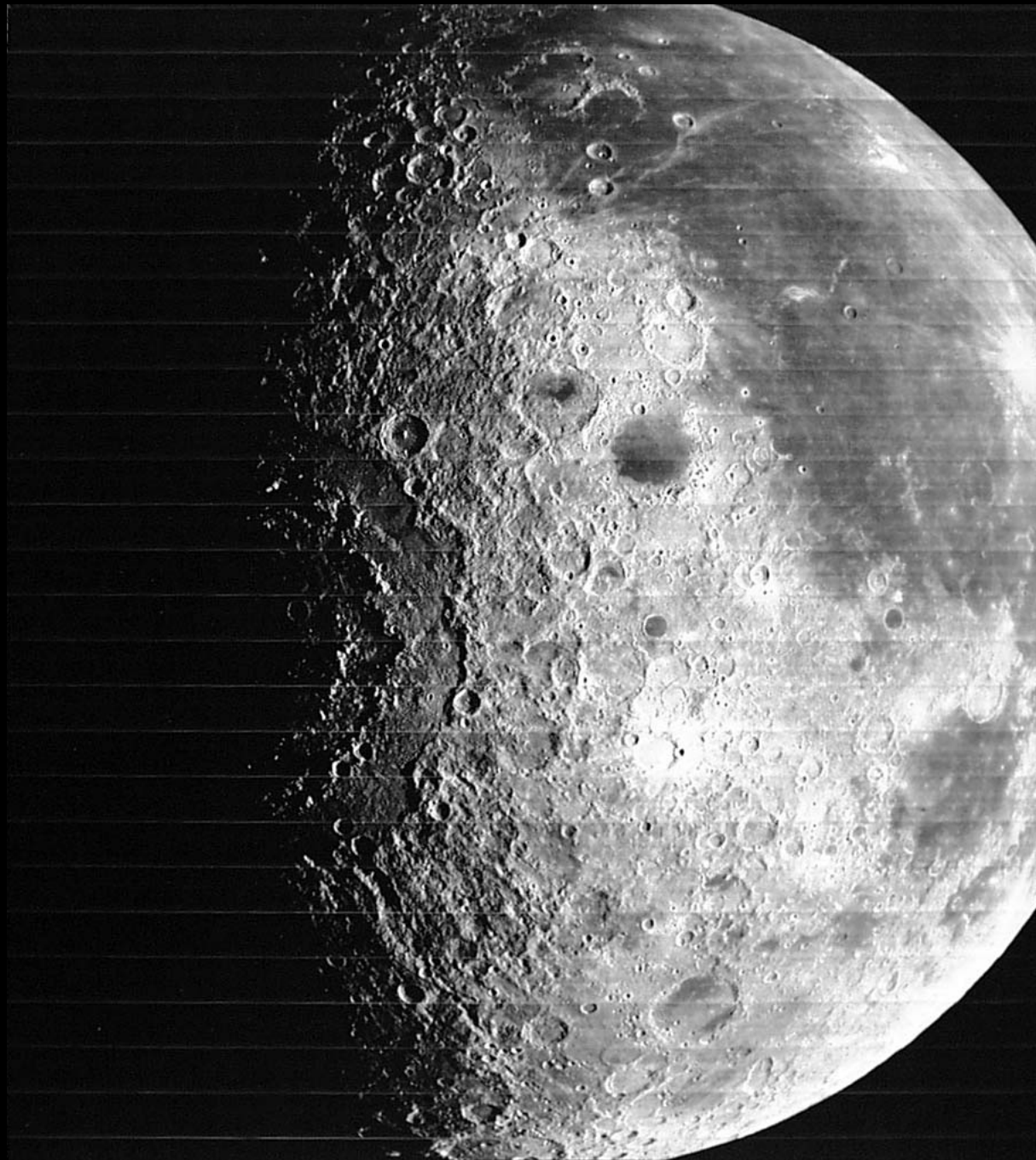
6/24/2005

The Geology of the Moon

34

# Vredefort Impact Crater

- The Vredefort Crater in South Africa is the largest remaining impact crater on the Earth.
- Age  $2.023 \pm 0.004$  billion years
- Diameter 300 km



6/24/2005

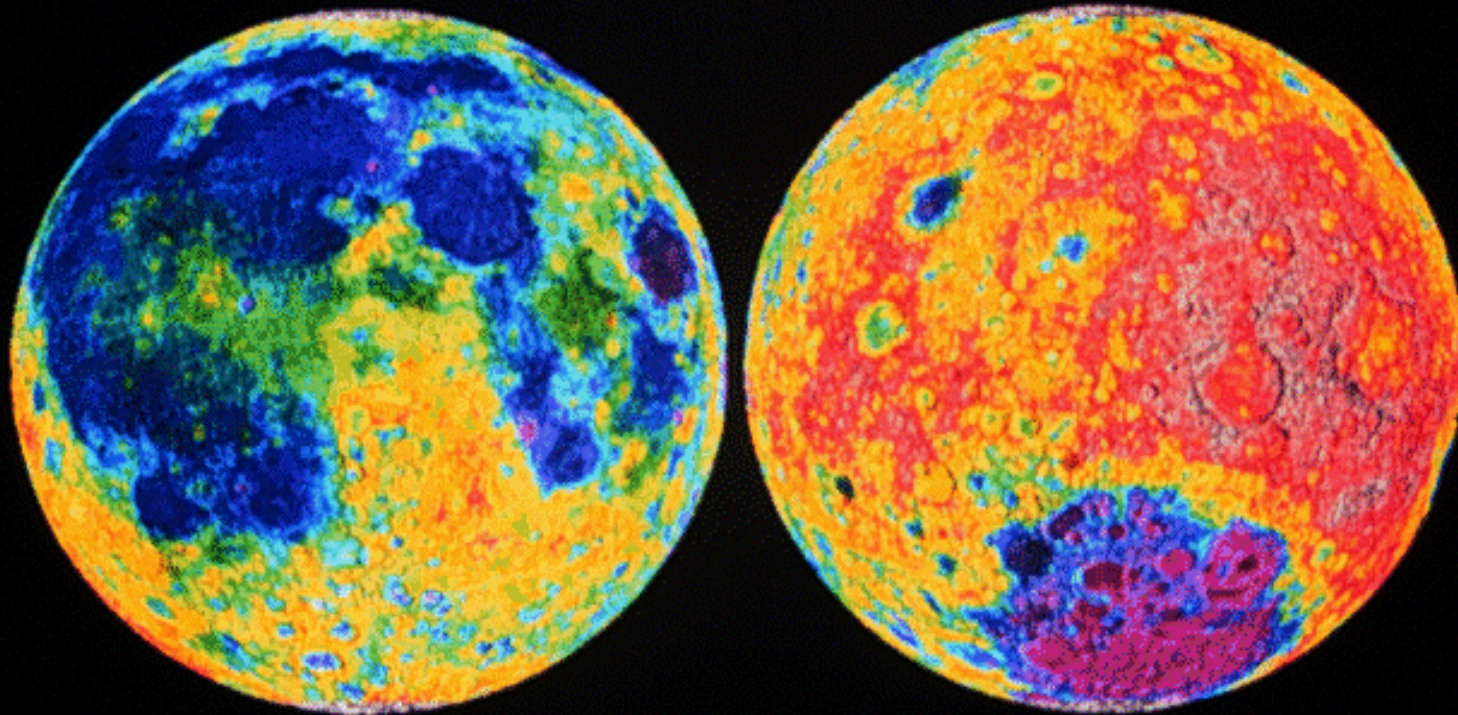


6/24/2005

37

# Clementine Topographic Map of the Moon

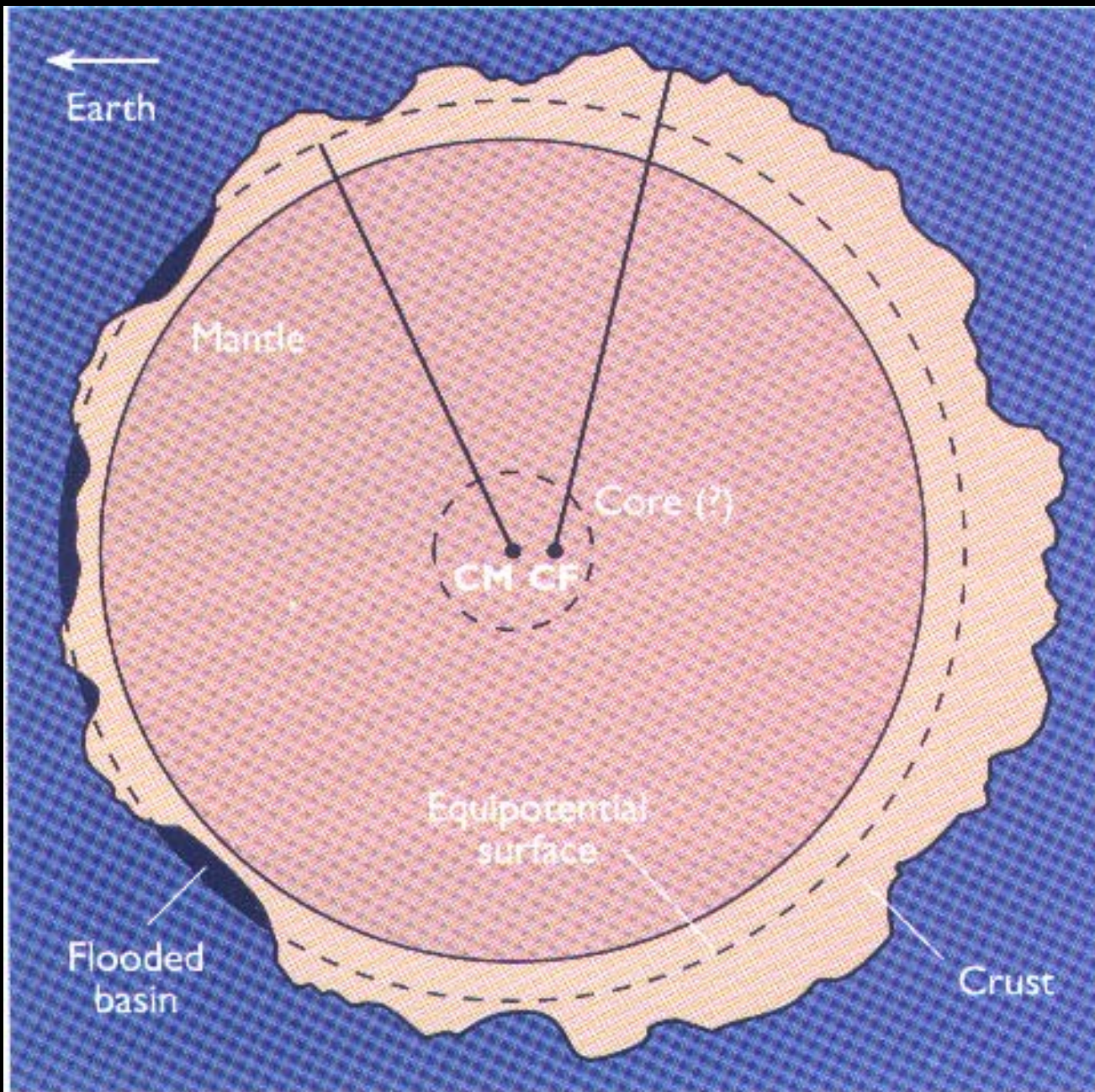
Contour Interval - 500 m



Near Side

Far Side



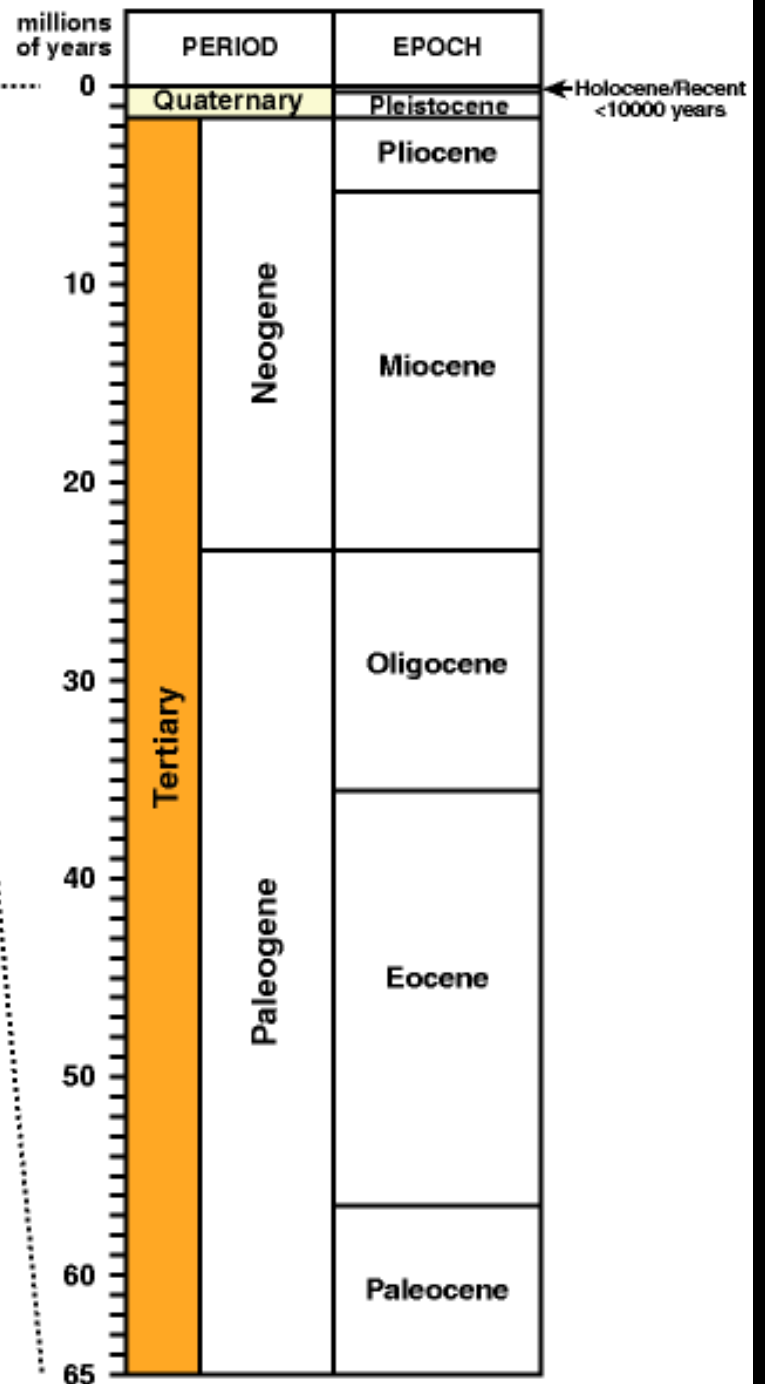
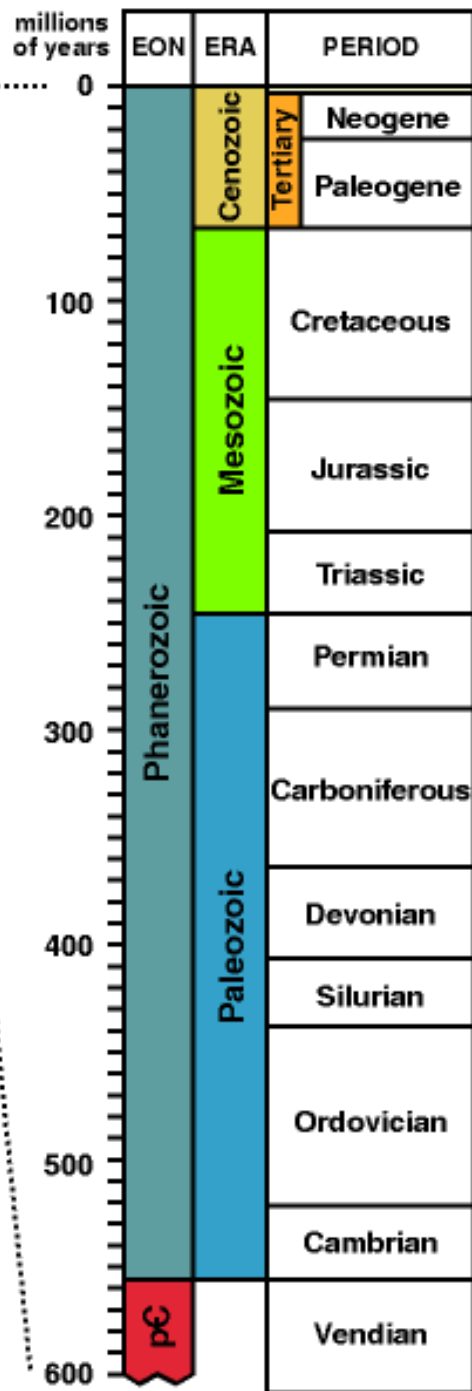
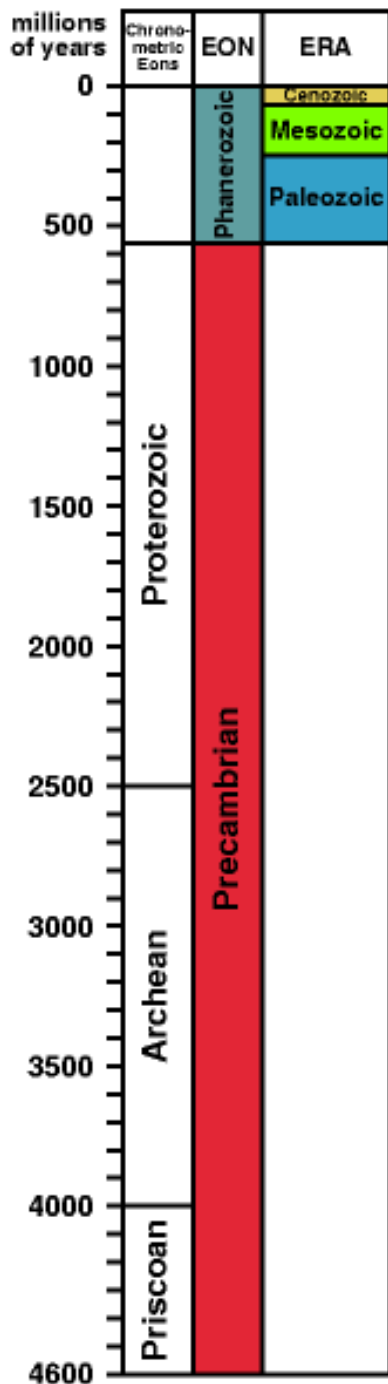




6/24/2005

40



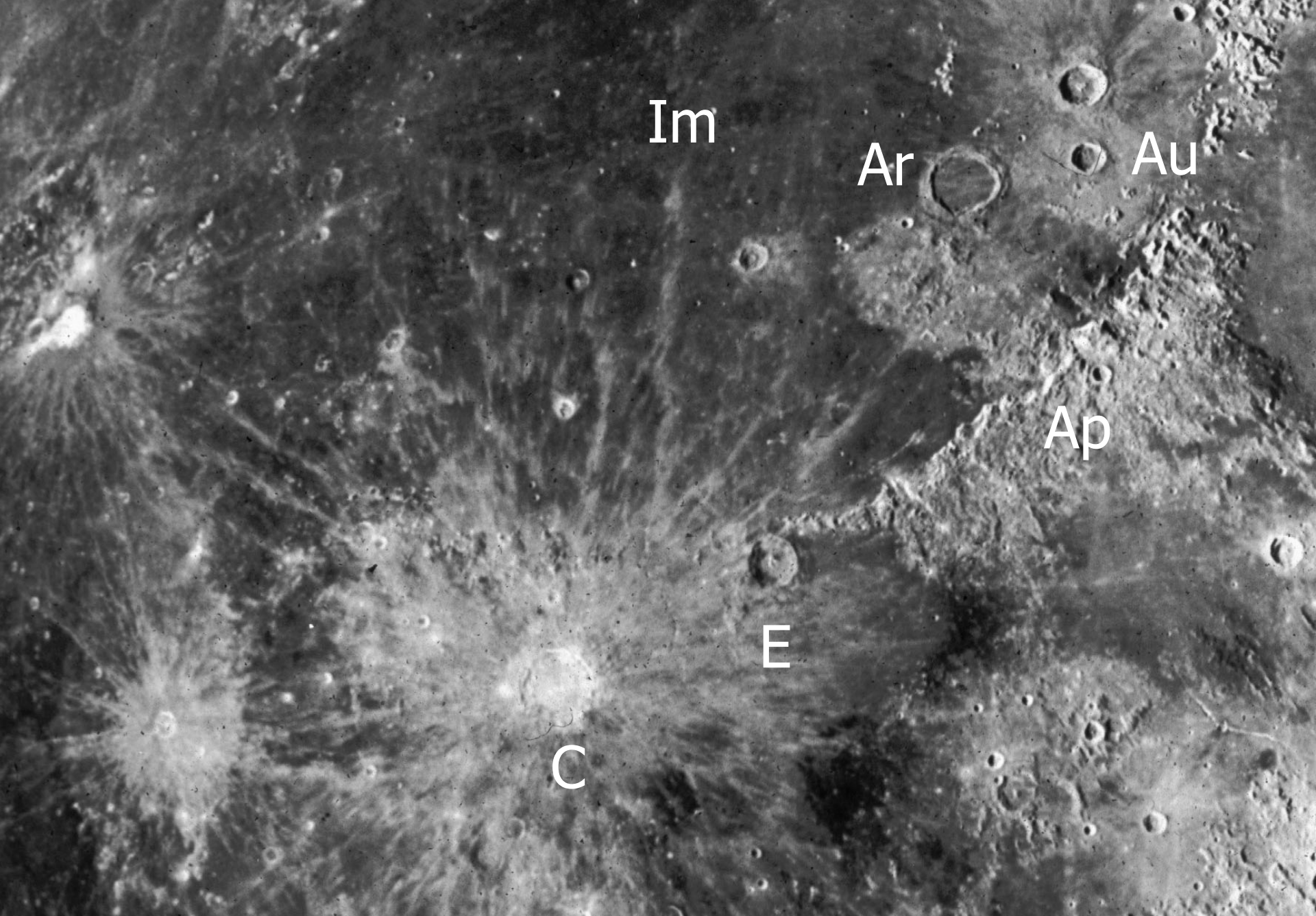




6/24/2005

The Geology of the Moon

42



Im

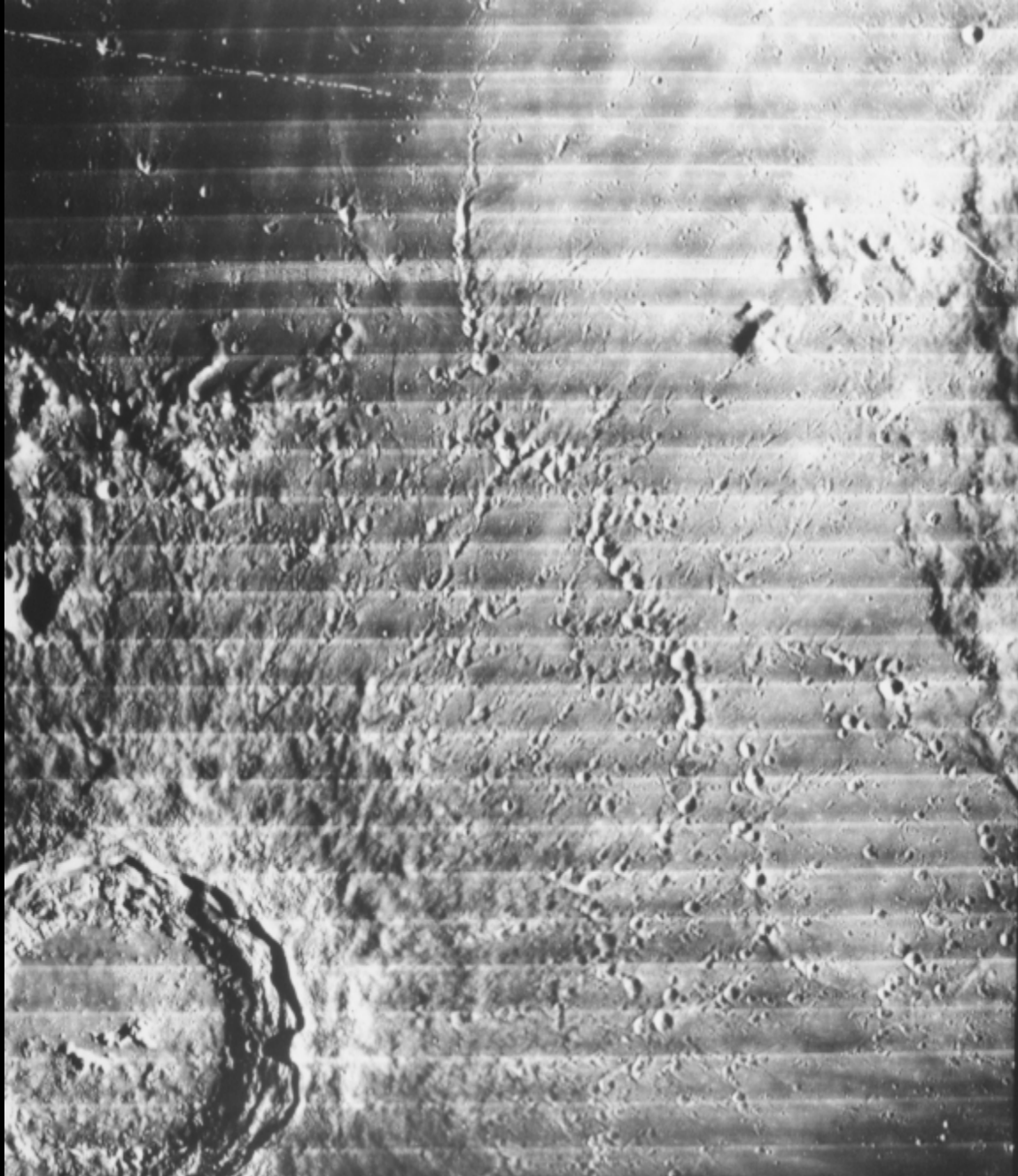
Ar

Au

Ap

E

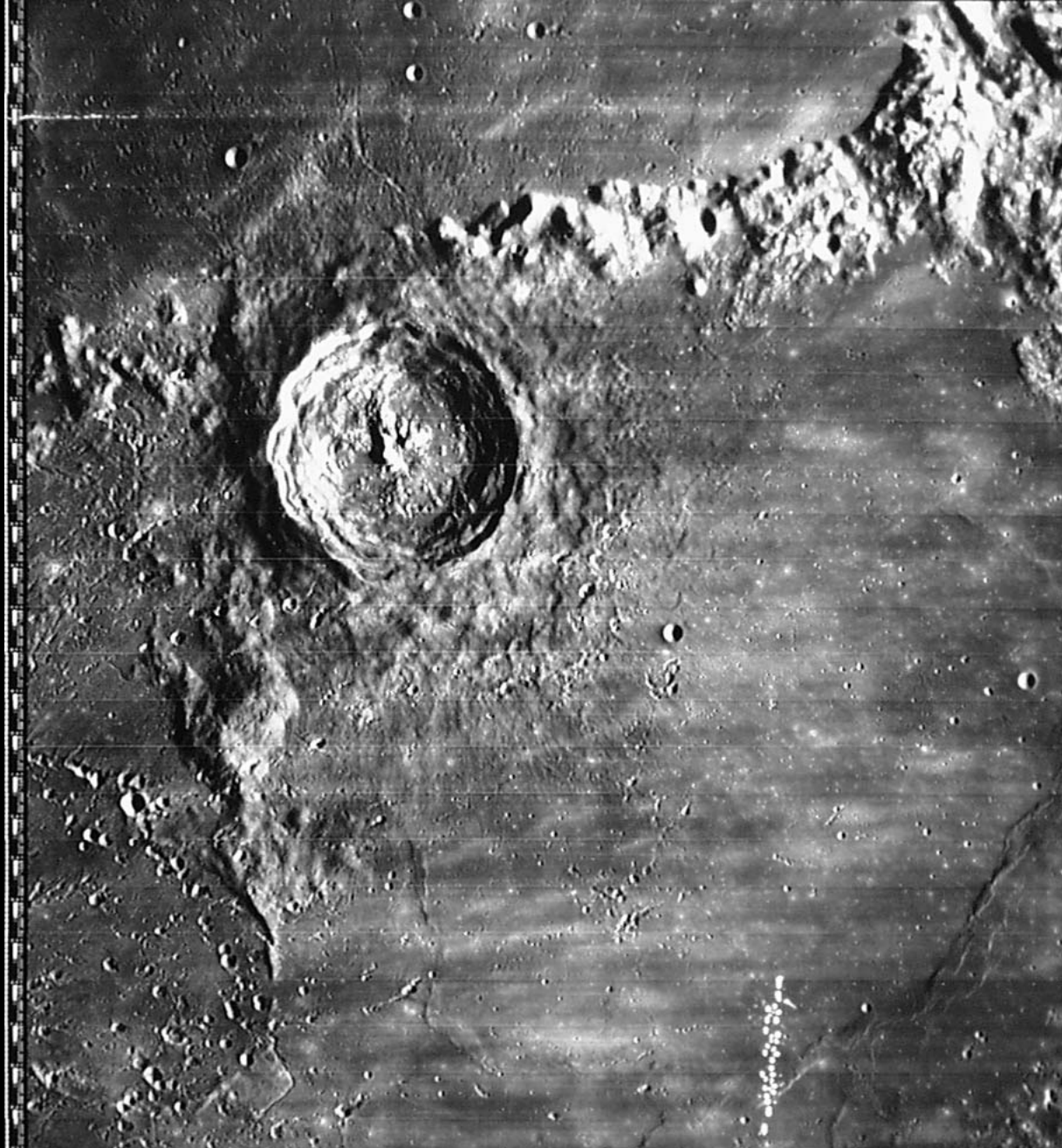
C



6/24/2005

The Geology of the Moon

44



6/24/2005

The Geology of the Moon

45

ASI5

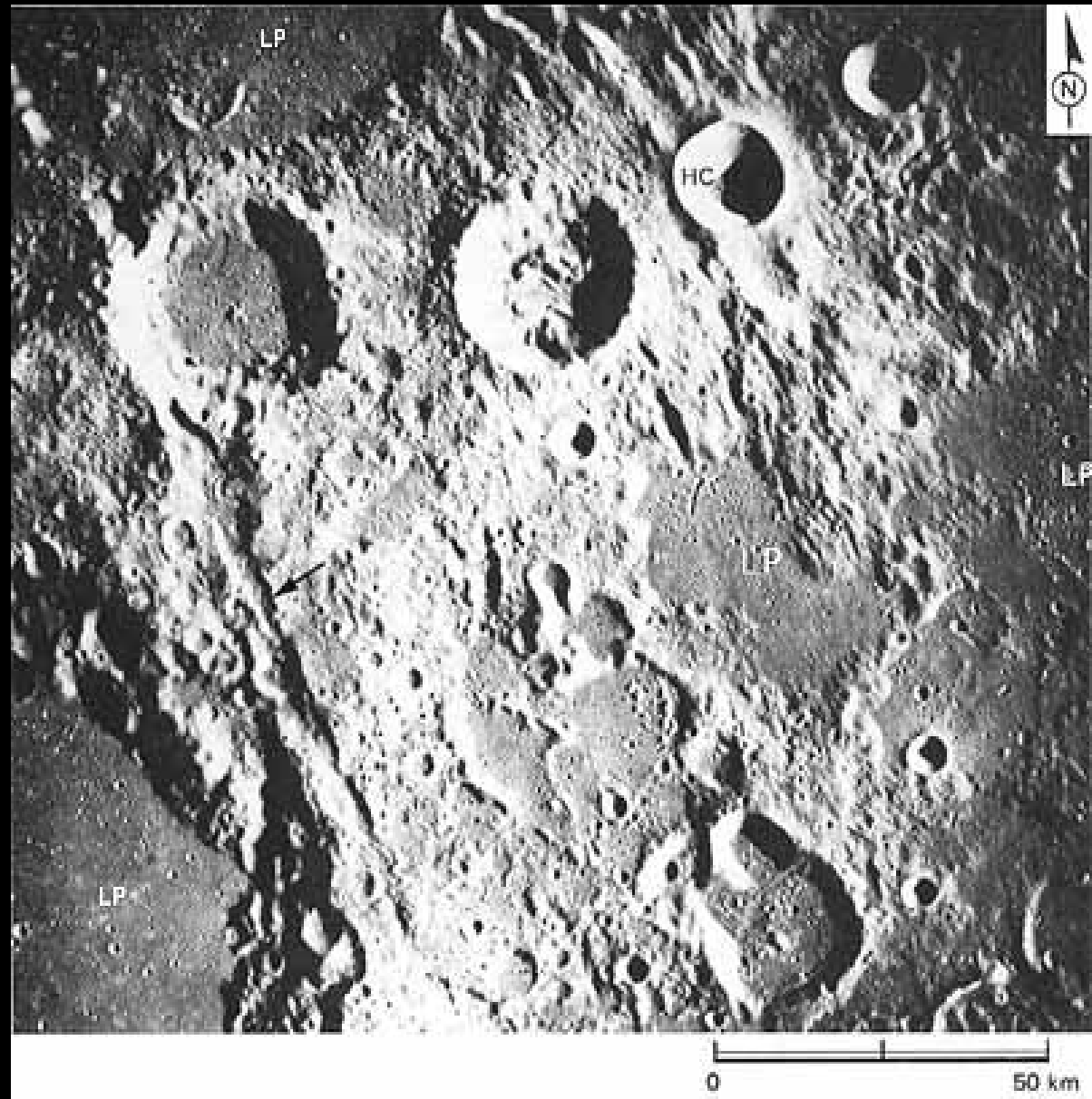
1541



6/24,

46

An area centered about 900 km southeast of the Imbrium basin, illustrating the radial fracturing and sculpturing of terra materials by the basin forming event. The arrow points to a 120 km long fracture that cuts the rims of the partly visible crater Albategnius in the lower left of the photograph and the crater Halley toward the upper left. It and similar trending fractures elsewhere in this picture are radial to the Imbrium basin and are related to its formation. The crater Hipparchus C (HC) is superposed on a fracture and, therefore, is younger than the Imbrium basin and the Imbrium sculpture. Light plains forming materials (LP) are younger than the Imbrium event, as indicated by the absence of fractures and the scarcity of superposed craters. Light plains deposits are a major stratigraphic unit of the terra regions.





an impact forms a multiringed basin over 1000 km (700 mi) in diameter.

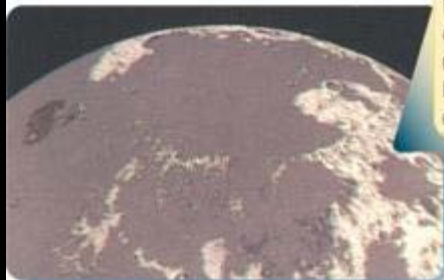


Continuing impacts crater the surface but do not erase the high walls of the multi-ringed basin.



Archimedes

Impacts form a few large craters, and, starting about 3.8 billion years ago, lava floods low regions.

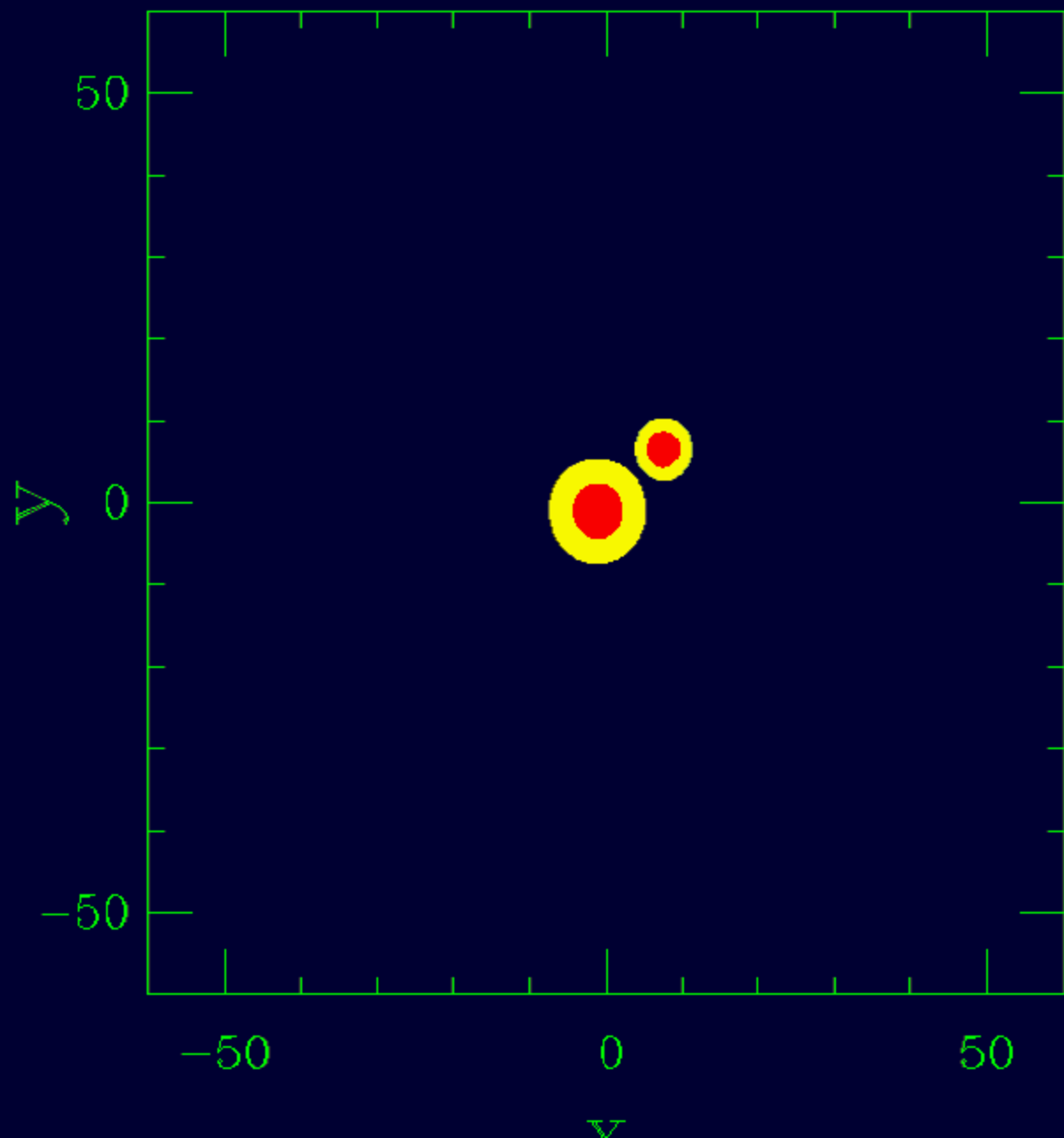


Repeated lava flows cover most of the inner rings and overflow the basin to merge with other flows.



Impacts continue, including those that formed the relatively young craters Copernicus and Kepler.





# Lunar History

<b>Time in past (aeons ago)</b>	<b>Event</b>
4.5	Accretion of Moon in Earth Orbit
4.5-4.2	Differentiation of crust and mantle; plutonism, volcanism, impact mixing and melting.
4.2	Crustal solidification and formation of oldest preserved basins.
4.2-3.92	Formation of at least 30 pre-Nectarian basins
3.92	Nectaris basin impact, beginning Nectarian Period
3.92-3.84	Formation of 10 Nectarian basins, including Serenitatis and Crisium
3.84	Imbrium basin impact, eruption of oldest dated intact mare lava flows, beginning Imbrian Period
3.8	Formation of last large basin (Orientale), marking Early Imbrian-Late Imbrian boundary.

# Lunar History

<b>Time in past (aeons ago)</b>	<b>Event</b>
3.8-3.2	Eruption of most voluminous mare lavas and pyroclastics; continued diminished impact cratering
3.2	Imbrian-Eratosthenian Period boundary
3.2-1.1	Continued mare volcanism and impact cratering
1.1	Eratosthenian-Copernican Period boundary
0.81	Copernicus impact
0.11	Tycho impact