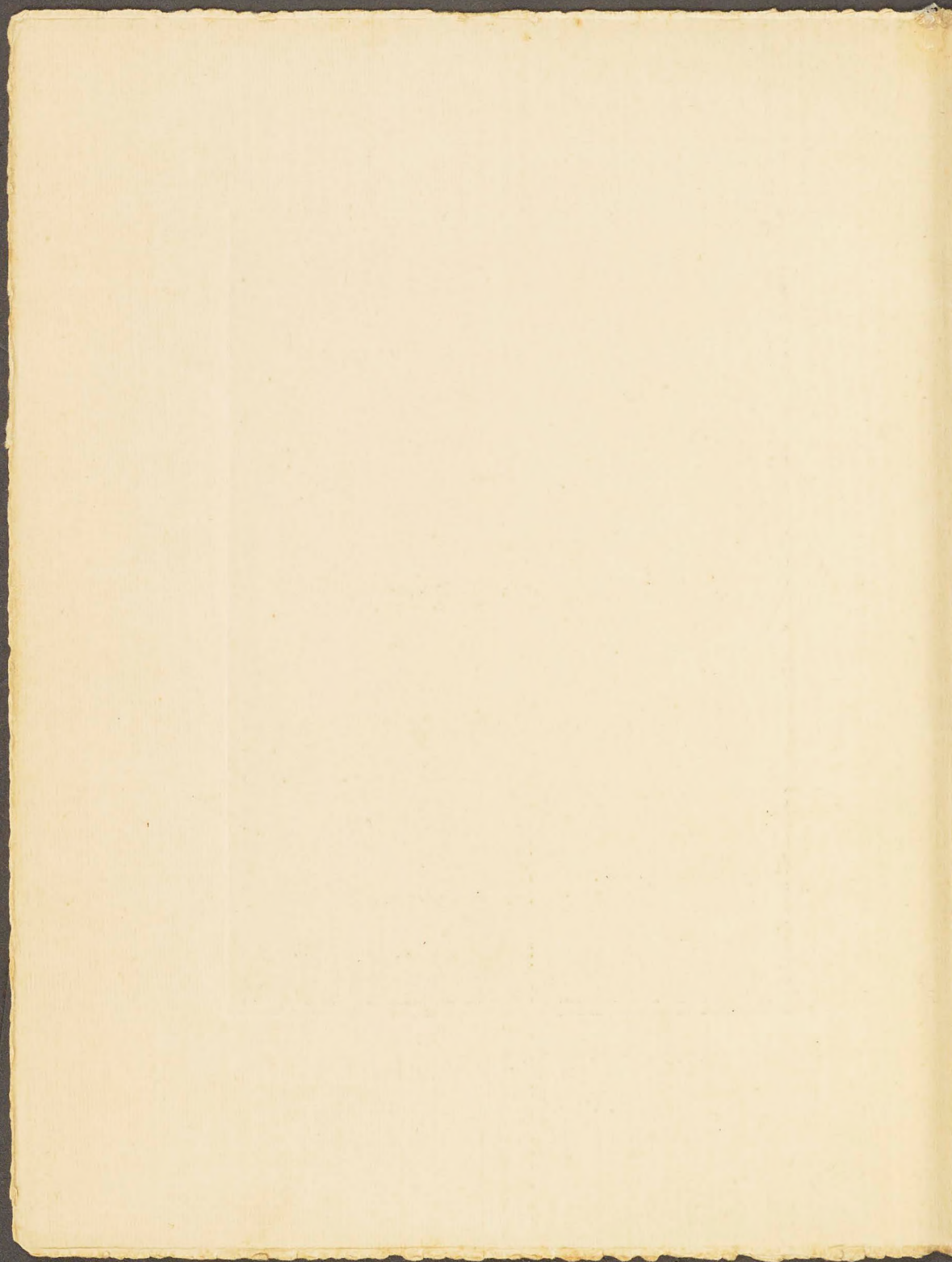
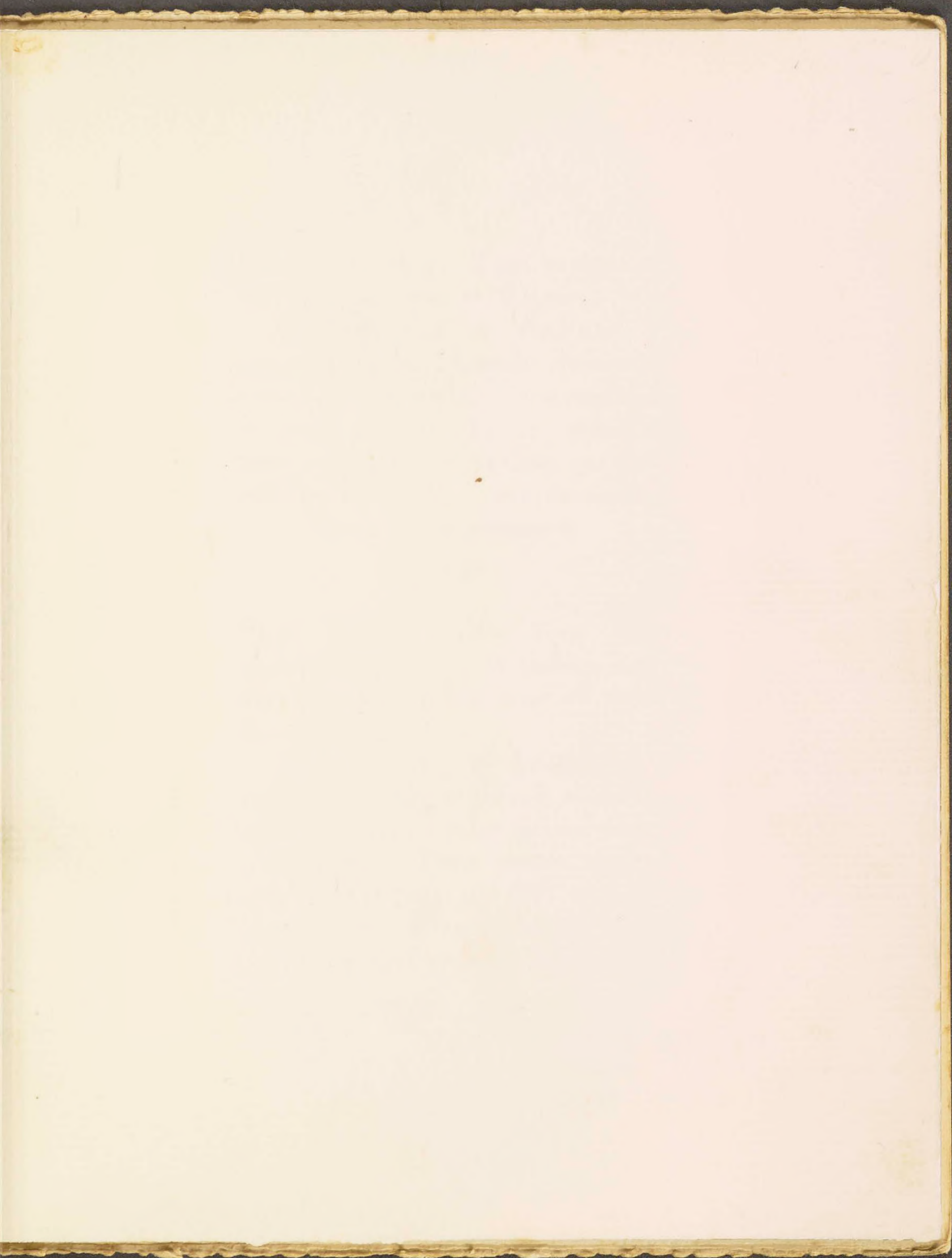


VAN CLEEF & ARPELS  
22, PLACE VENDÔME  
PARIS



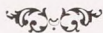




JSL  
00019618

Place Vendôme, d'où rayonnent  
sur le monde luxe et élégance,

VAN CLEEF & ARPELS  
présentent à une clientèle choisie la  
variété et la splendeur incomparables  
de leurs bijoux. Artistes délicats,  
leurs collaborateurs justifient par leur  
goût et leur talent une renommée  
sans cesse grandissante.



Place Vendôme, the very spot  
whence the dictates of fashion and  
true elegance are broadcast all over  
the world,

VAN CLEEF & ARPELS  
display to their exclusive clientèle  
gems of priceless value in undreamt  
of profusion. Their artistic work-  
manship, the taste and skill of their  
designers are evidenced by the ever  
increasing success they command.

VAN CLEEF & ARPELS

JOAILLIERS

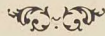
22, PLACE VENDÔME — PARIS

# 500.00

New Book World

11/06

Oiseaux merveilleux des pays lointains, vos couleurs brillantes resplendissent sur ces broches aux feux étincelants, éblouissantes parures.

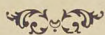


Ye wondrous birds from far-away lands, living gems rather than brooches, in your myriad morning hues, you set forth the shining glamour of alluring beauties.



VAN CLEEF & ARPELS

Le Temps suspend son vol aux ravissantes montres châtelaines enrichies de diamants, de jade ou d'onyx.



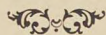
Time seems to have alighted in its flight on those delightful chatelaine watches inlaid with precious stones, jade or onyx.



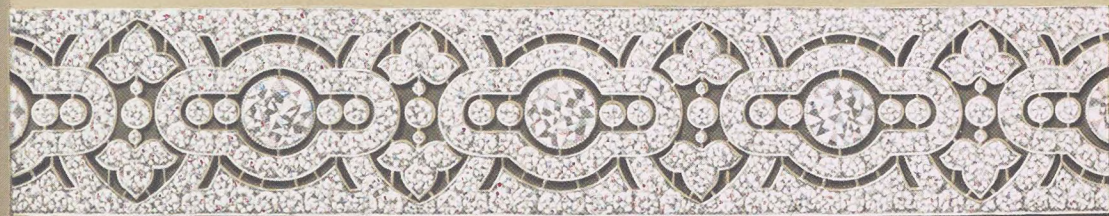


VAN CLEEF & ARPELS

Cercle d'or aimé de Cléopâtre, le  
bracelet s'enroule maintenant, large  
ruban de pierreries, délicatement  
cisé, aux bras de nos reines de la  
mode.

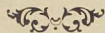


The heavy gold bangle Queen  
Cleopatra loved has evolved into the  
delicately wrought jewelled band of  
our days clasped round the wrists of  
our Queens of Fashion.



VAN CLEEF & ARPELS

Bijoux aux lignes harmonieuses,  
aux pierres splendides, les broches  
modernes ont une suprême distinction.

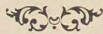


Perfect harmony of design and  
priceless gems achieve the paramount  
distinctiveness of the modern brooch.

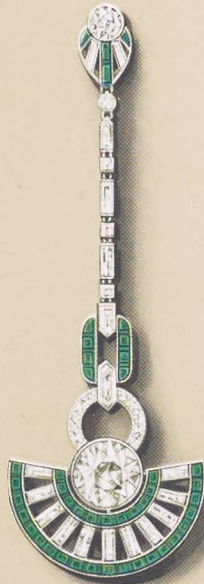


VAN CLEEF & ARPELS

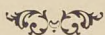
Gemmes précieuses, gouttes de  
lumière, les longues pampilles aux  
reflets chatoyants animent le visage  
féminin de leur grâce souple et  
mouvante.



Gems of rarest worth, drops of  
purest light, dangling pendants, by  
the charm of their glowing tones  
and gently swaying motion enhance  
the beauty of the feminine face.

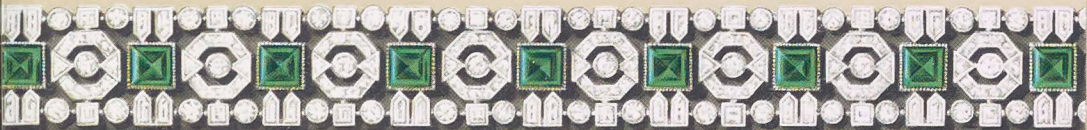


Le bracelet fut le premier ornement  
de la coquetterie. Mais peut-on  
reconnaître l'antique et lourd anneau  
dans cette chaîne légère qui scintille  
au bras nu?



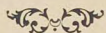
Can it be possible that this delicate  
chain brightly encircling a dainty  
arm was once the cumbersome heavy  
bangle, that first ornament of  
mankind?



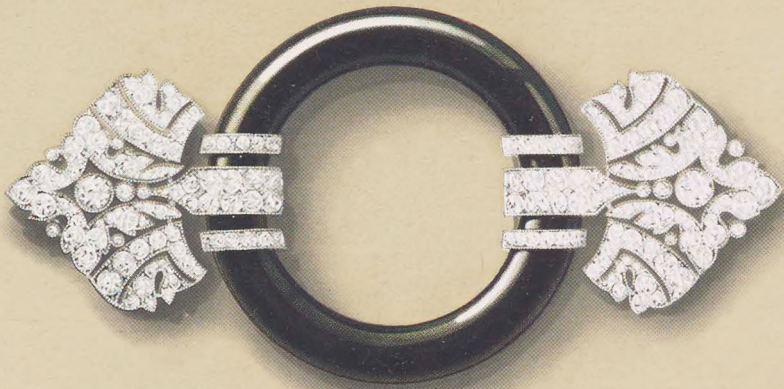


VAN CLEEF & ARPELS

Des artistes au goût raffiné ont créé  
ces formes inédites d'une richesse sans  
égale où la monture à peine se devine.

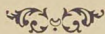


Of unparalleled richness these enti-  
rely novel designs where the setting  
is hardly perceptible have been  
created by genial artists.

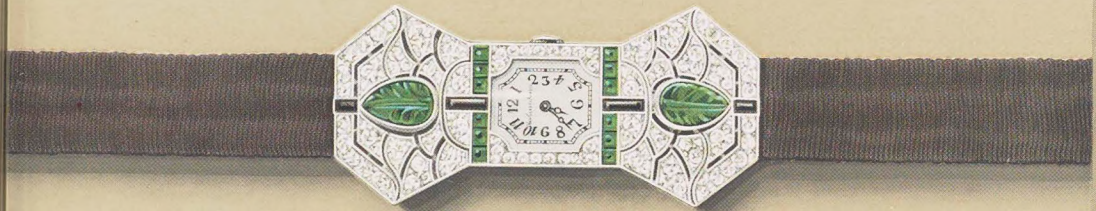


VAN CLEEF & ARPELS

Enchâssées des brillants et de la  
moire d'un bracelet-montre, les heures  
s'écoulent plus jolies.



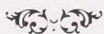
Encircled by diamonds, on a watered  
silk band, the hours pass more  
brightly by.



VAN CLEEF & ARPELS



VAN CLEEF & ARPELS se chargent de toutes les réparations et transformations de bijoux ; ils offrent le choix le plus rare de rangs de perles et de perles pour colliers. Une employée est mise gracieusement à la disposition des clientes pour l'enfilage des perles.



VAN CLEEF & ARPELS undertake all kinds of repairs and alterations. They have the widest choice of strings of pearls and loose pearls for necklaces. A lady specialist is in constant attendance for stringing customers' pearls free of charge.

Registre du Commerce :

Paris N° 115,808

Deauville N° 1,649

Nice N° 8,259

Cannes N° 2,060

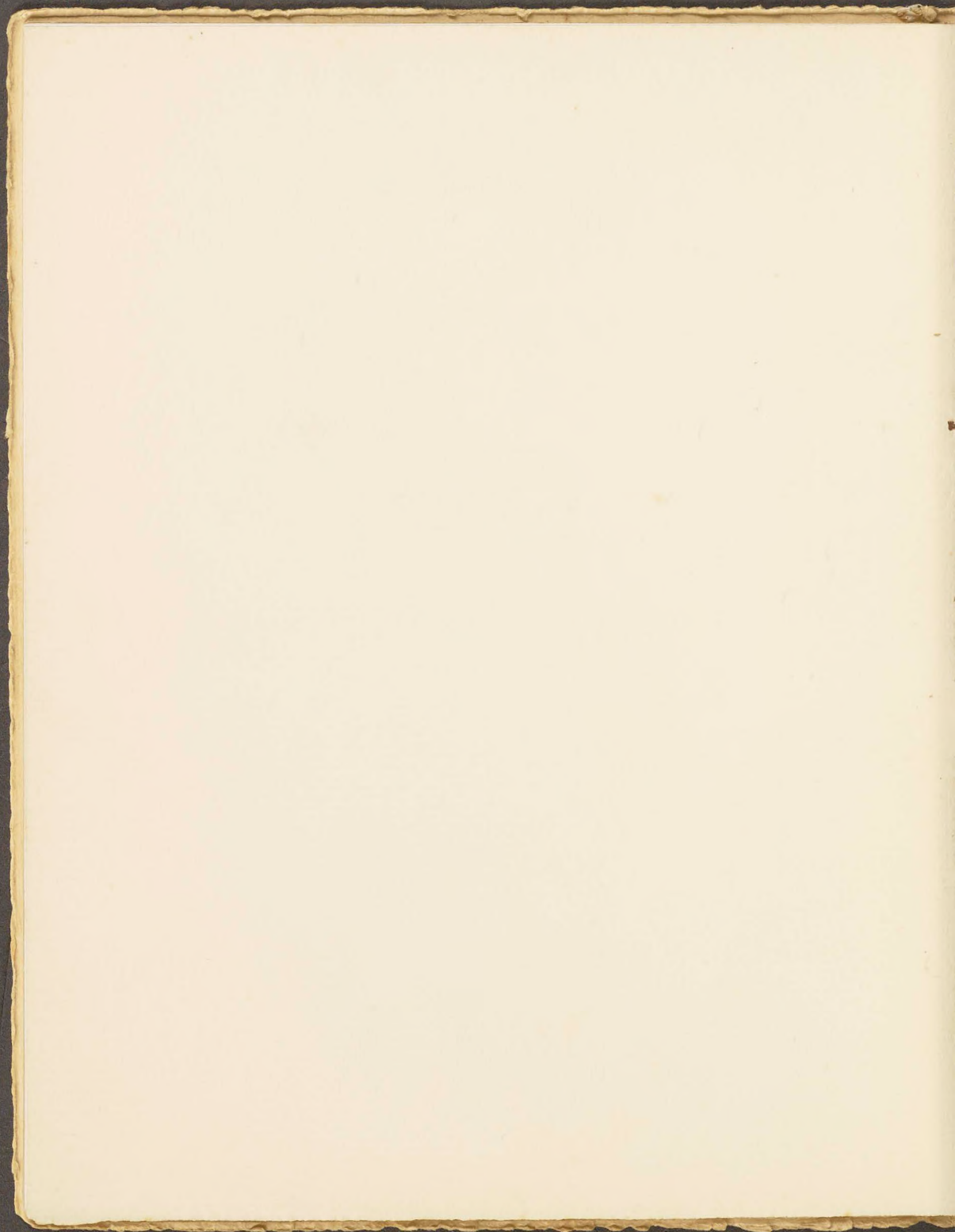
DRAEGER, IMP.

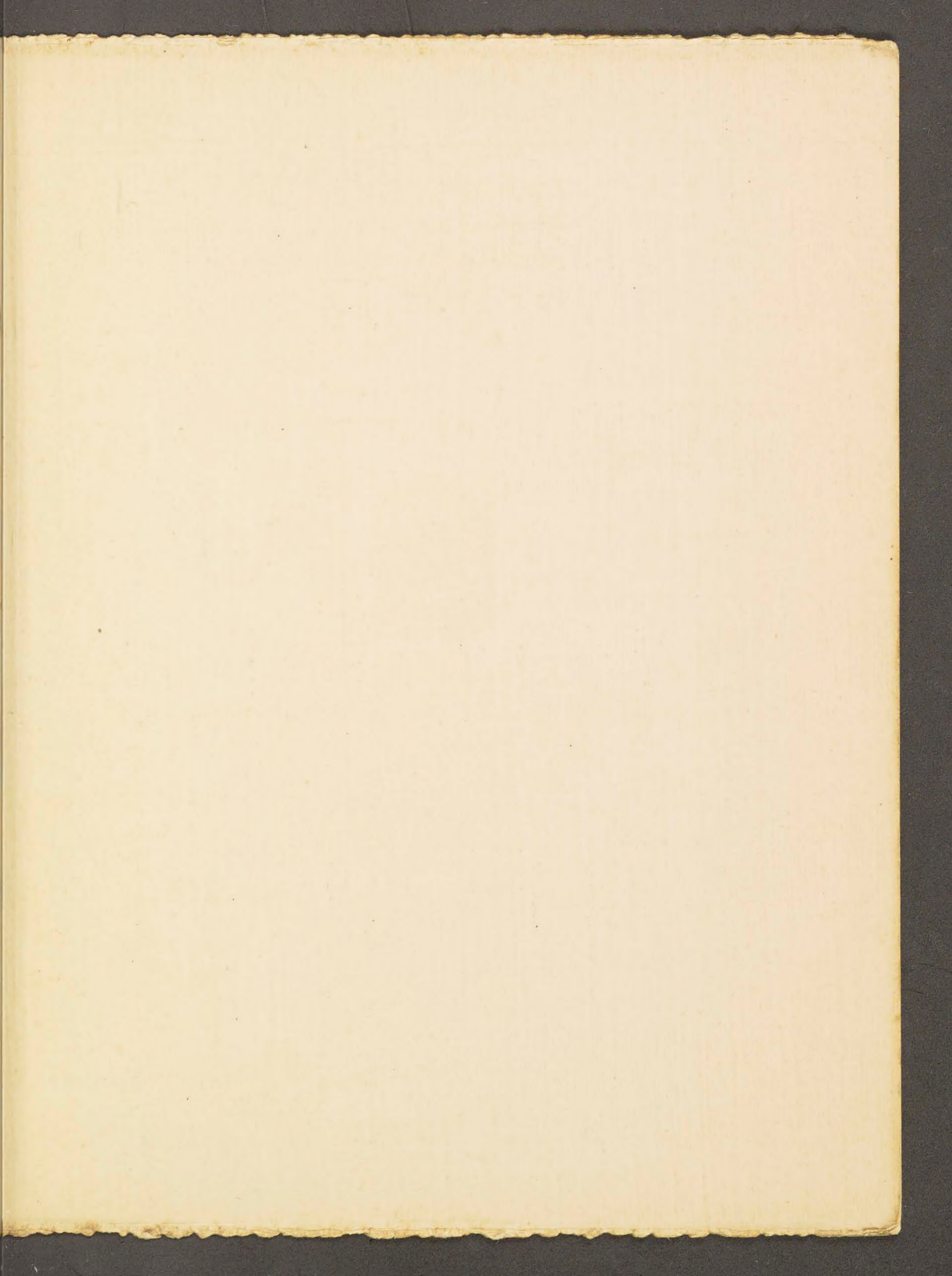
PARIS














DRAEGER  
IMP.  
PARIS

