

THE METROPOLITAN MUSEUM OF ART



3 0620 00575946 8



4

THE HARCOURT JOHNSTONE COLLECTIONS

CATALOGUE

OF

**THE VERY CHOICE COLLECTION OF
CHINESE CERAMICS**

**JADE AND HARDSTONE CARVINGS
ETC.**

*The Property of
Harcourt Johnstone, Esq.*

COMPRISING

A REMARKABLE SERIES OF HAN TOMB WARES
AND YUEH YAO FUNERARY VASES AND A FINE T'ANG MARBLE LION

A GOOD "YING CH'ING" WINE JAR

AN ATTRACTIVE LUNG CH'UAN CELADON VASE

IMPORTANT CHÜN YAO BOWLS AND INCENSE BURNERS

A SUPERB SERIES OF

MING 16TH CENTURY CLOISSONNÉ DECORATED AND COLOURED WARES

INCLUDING

A VERY FINE DOUBLE GOURD VASE AND AN IMPORTANT BALUSTER VASE

K'ANG HSI "FAMILLE-VERTE" PORCELAIN OF GOOD QUALITY

MONOCHROME GLAZES OF THE 18TH CENTURY

INCLUDING THREE SMALL CHOICE LANG YAO VASES

ATTRACTIVE JADES AND HARDSTONE CARVINGS

AND

AN EARLY BRONZE FOOD VESSEL OF THE CHOU DYNASTY

*The entire Collection has been exhibited on loan at thirty of the principal
Provincial Museums in this Country.*

WHICH WILL BE SOLD BY AUCTION

BY MESSRS.

SOTHEBY & CO.

G. D. HOBSON, M.V.O.

F. W. WARRE, O.B.E., M.C.

C. G. DES GRAS.

C. V. PILKINGTON.

P. C. WILSON.

Auctioneers of Literary Property & Works illustrative of the Fine Arts

AT THEIR LARGE GALLERIES, 34 & 35, NEW BOND STREET, W. (1)

On THURSDAY, the 13th of JUNE, 1940

AT ELEVEN O'CLOCK PRECISELY

On view at least Two Days prior.

Catalogues may be had

Illustrated Catalogue (10 plates)

**A Printed List of all Prices and Buyers' Names at this sale can be
supplied for two shillings, and for all sales at low subscription rates**

CONDITIONS OF SALE

- I. The highest bidder to be the buyer. If any dispute arise the Auctioneer shall have absolute discretion to settle it ; and to put any disputed lot up again.
- II. No person to advance less than 1s. ; above five pounds 5s., and so on in proportion.
- III. All lots are put up for sale subject (a) to any reserve price imposed by the seller and (b) to the right of the seller to bid either personally or else by any one person who may be the Auctioneer.
- IV. The purchasers to give in their names and places of abode, and if required, to pay down 10s. in the pound or more, in part payment of the purchase money ; in default of which the lot or lots purchased may be immediately put up again and re-sold.
- V. All lots are sold as shown with all faults, imperfections, and errors of description. Messrs. Sotheby & Co. act as agents ; they have full discretion to refuse any bidding or to withdraw any lot or lots from the sale without in either case giving any reason ; they are not responsible for errors of description or for genuineness or authenticity of any lot or for any fault or defect in it. Messrs. Sotheby make no warranty whatever.
- VI. The lots to be taken away at the buyer's risk and expense, immediately after the conclusion of the sale ; in default of which Messrs. Sotheby & Co. will not hold themselves responsible if the same are lost, stolen, damaged or otherwise destroyed, but they will be left at the sole risk of the purchaser, and subject to a charge for warehousing. If, at the expiration of Two Days after the conclusion of the sale, unless otherwise agreed, the lots are not cleared or paid for, they may then be sold immediately, either publicly or by private treaty, without any notice being given to the defaulter.
- VII. Upon failure of the buyer to comply with any of the above conditions, the money deposited in part-payment shall be forfeited ; and the defaulter at this sale shall make good any loss arising from the re-sale, together with the charges and expenses in respect of both sales.

To prevent confusion no purchases can be claimed or removed during the sale.

Messrs. SOTHEBY & Co.

are prepared to execute bids, and in addition to advise intending purchasers as far as possible, if requested by them to do so, without making any charge for either service. Lots will be procured as cheaply as is permitted by other bids or reserves, if any.

34 and 35, New Bond Street, London, W.1

Telegraphic Address :

" Abinitio, Wesdo, London."
 A.B.C. Code, 5th Edition.

Telephone : (3 lines)

Mayfair 6682, 6683, 6684

In sending Commissions this Catalogue may be referred to as "FERN"

RESERVES AND COMMISSIONS SENT BY TELEPHONE ARE ACCEPTED ONLY AT THE SENDER'S RISK AND MUST BE CONFIRMED BY LETTER OR TELEGRAM.

THE HARCOURT JOHNSTONE COLLECTIONS

CATALOGUE
OF
**THE VERY CHOICE COLLECTION OF
CHINESE CERAMICS,
JADE AND HARDSTONE CARVINGS,
Etc.**

*The Property of
Harcourt Johnstone, Esq.*

*The Entire Collection has been exhibited on Loan at thirty of the
principal Provincial Museums in this Country*

DAY OF SALE :

Thursday, 13th June, 1940

AT ELEVEN O'CLOCK PRECISELY

EARLY CHINESE POTTERY

- 1 A Granary Urn of cylindrical form, with green glaze, surmounted by a circular top in the form of a tiled roof with aperture, the body with bands of horizontal ribbing supported on three bear feet, 10½in. ; *Han Dynasty*

** The type is illustrated by Hobson in the catalogue of the Eumorfopoulos Collection, pl. 4, no. 20.

- 2 Another Granary Urn of similar form but slightly smaller, with a dark green glaze, 10in. ; *Han Dynasty*

- 3 A Jar of squat oviform shape covered with an iridescent green glaze and supported on a flat base, $5\frac{5}{8}$ in. ; and a Granary Urn of the usual form supported on three bear feet, red pottery with a drab green glaze, $9\frac{1}{4}$ in. ; *Han Dynasty* 2
- 4 A Hill Jar covered with a green iridescent glaze, the cylindrical body supported on three legs in the form of bears and decorated with a moulded frieze of animals, wave ornament, and mask and ring handles, the cover with pyramidal wave-like hills and spiritedly moulded animals, 11in. ; *Han Dynasty* 2
- ** The type is illustrated in the catalogue of the Eumorfopoulos Collection, pl. 6, no. 46.
- 5 Another Hill Jar of a very similar form, and with almost exactly similar moulded frieze, 11in. ; *Han Dynasty* 2
- 6 A large Wine Vase with globular body, high neck and expanding mouth, supported on a conical foot, with kiln rests on the base, the body moulded with concentric rings and covered with an iridescent green glaze, 18in. ; *Han Dynasty*
- ** Hobson and Hetherington in "The Art of The Chinese Potter" illustrate a more slender type on pl. 1.
- 7 The companion Wine Vase (*Hu*) of very similar form and colouring, the underside of the base also with three foot rests and fine silver iridescence, 18in. ; *Han Dynasty*
- 8 A Jar of small oviform shape with rich green glaze over a red pottery body, the shoulders with a spiritedly moulded frieze of hunters, jumping animals and wave ornament, $6\frac{3}{4}$ in. ; and a small Wine Jar with depressed globular body and expanded neck, $9\frac{1}{2}$ in. ; *Han Dynasty* ; with stand 3

- 9 A Cauldron and Cover of bold shape with two winged handles, supported on tripod animal feet, the cover with a cruciform fish design within dentate and wavy borders, the whole covered with a green iridescent glaze, $7\frac{3}{4}$ in. ; *Han Dynasty* 2

** See the catalogue of the Eumorfopoulos Collection, pl. 6, no. 27, and for a bronze and silver inlaid example, catalogue of the Chinese Exhibition, no. 391.

- 10 A Wine Vase with oviform body and expanding neck covered with a dark green iridescent glaze, the shoulders with a moulded frieze of animals and hunting scenes and mask and ring handles, 14in. ; *Han Dynasty*

** See an interesting article on Mortuary Pottery of the Han Era in "International Studio", March 1927, by J. W. Harrington, p. 50 ; also Eumorfopoulos catalogue, pl. 2, no. 9.

- 11 Another Wine Vase of larger size, with iridescent green glaze and mask and ring handles elaborately moulded on the shoulders and with concentric ribbing, 17in. ; *Han Dynasty*

- 12 A tall Granary Urn of cylindrical form, with conical roof having an aperture in the centre, the body and roof with bands of engraved ornament under a rich green glaze, tripod support, $16\frac{1}{4}$ in. ; *Han Dynasty* ; wood cover 2

** This tall type is seen in the Winkworth Collection, catalogue of the Chinese Exhibition, no. 459.

- 13 A Model of a House, with apex roof and a stout ridge, the lower part with two folding doors, one placed open, the base supported on four bear masks, the whole covered with a rich green iridescent glaze, $11\frac{1}{4}$ in. high, 13in. long ; *Han Dynasty*

** Models of Chinese Homesteads are discussed in an article by Anneliese Bulling in the Burlington Magazine, Oct. 1937, in the British and Royal Ontario Museums.

- 14 A Hill Jar and Cover of typical cylindrical form, moulded with a hunting frieze and mask and ring handles, the pyramidal cover with hills in relief, the whole supported on three bear feet, 12in. ; *Han Dynasty* ; wood stand 3
- 15 A pottery Model of a Duck, with red body and traces of iridescence, 9in. ; and another of a Hen with similar body, 5½in. ; *Han Dynasty or later* (cf. *Eumorfopoulos cat.*, pl. 11) 2
- 16 A good pottery Figure of a Watch Dog, covered with a green iridescent glaze, wearing a stout collar and body harness showing the buckles, the tail curled over the back, perhaps a prototype of the Chow dog seen today, 11in. ; *Han Dynasty*

** Type cf. cat. Eumorfopoulos Collection, pl. 9, no. 63.

[See ILLUSTRATION]

- 17 Another pottery Watch Dog, with more elaborately modelled head and stamped leather collar and harness, with a green iridescent glaze, a small tail curved over the body, the interior hollow, the mouth open, and capable of being used like an aquamanile, 12in. ; *Han Dynasty*

** Hobson illustrates a very similar example in the catalogue of the Eumorfopoulos Collection, pl. 9, no. 66.

[See ILLUSTRATION]

- 18 A Granary Urn of cylindrical body covered with a green glaze, the circular top in the form of a tiled roof with aperture, supported on three bear feet, the whole covered with a green glaze iridescent in places, 9½in. ; *Han Dynasty* (cf. *Eumorfopoulos cat.*, pl. 4, no. 20)



16



17



Digitized by the Internet Archive
in 2019 with funding from
The Metropolitan Museum of Art

<https://archive.org/details/verychoicecollec00soth>

- 19 A Hill Jar with cylindrical body supported on three legs, the body decorated with a frieze of animals in relief and with ring and mask handles, the cover moulded in the form of wave-like hills, the whole covered with a dark green iridescent glaze over a red pottery body, 10in., *Han Dynasty* ; wood stand 3
- ** See Hetherington "The Early Ceramic Wares of China", pl. 3 (abridged).
- 20 A HORSE, saddled with ornate trappings and long saddle cloth, full mane, short tail and flexed neck, unglazed with traces of red pigment on the saddle and short tail, 13in. ; *T'ang Dynasty*
- 21 A PAIR OF TALL YUEH YAO FUNERARY VASES AND COVERS, with oviform bodies and tall necks, moulded in relief, with figures of Sages and immortals, birds, animals and coiling dragons, the bulbous mouths with loops and frilled borders, surmounted by conical covers with bird finials, the circular bases of ebonised wood, 35½in. ; *Tang/Sung Dynasty* 4
- ** The type of this and the following two lots may be seen in the catalogue of the Eumorfopoulos Collection, nos. 458 and 459.
- 22 ANOTHER PAIR of Yueh Funerary Vases with slender oviform bodies, a frieze of figures of mourners and dragons in relief round the neck and shoulders, surmounted by pyramidal stupa-like covers, circular ebonised bases, 30in. ; *end Tang or Sung Dynasty* 4
- 23 ANOTHER PAIR with oviform bodies, and tall tapered necks, moulded in a relief with a fence, figures, and dragons among foliage, covered with a grey glaze, 18in., *T'ang/Sung Dynasty* 2
- ** See Hobson "Chinese Pottery and Porcelain", vol. 1, pl. 14, fig. 4.
- 24 A "Ying Ch'ing" Bowl, with hexagonal lobed rim, covered with a shadowy-blue glaze and supported on a circular foot, 6¾in. ; and six Saucer Dishes, carved with flower sprays and moulded in relief with fish among waves, 5¾in. ; *Sung Dynasty* 7

- 25 A "YING CH'ING" STEM CUP, of shallow form with six lobed sides, incised in the interior with flower sprays, on a short foot, 5in. ; four "Ying Ching" Saucer Dishes, moulded in relief with fish among aquatic flowers and weeds, and borders of fret, flowers and *pao shan hai shui*, 5½in. ; and a deep Bowl with plain interior carved with lotus on the exterior, 6½in. ; *Sung Dynasty* 6
- 26 A "YING CH'ING" BOWL, of shallow form, attractively carved under a shadowy blue glaze, with a freely drawn lotus, the underside without decoration, the rim with six lobes, 7½in. ; *Sung Dynasty*
- 27 A "YING CH'ING" COSMETIC BOX, of shallow circular shape, moulded on the lid with *feng huang* in relief, and in the centre a small flower head, 4in. ; *Sung Dynasty* 2
- 28 A PAIR OF "YING CH'ING" VASES, of fluted pear shape, with double dragon handles, masks and flower heads moulded on the shoulders, surmounted by foliate necks and supported on circular hollow feet in biscuit state, 9in. ; *Sung Dynasty* ; wood stands 4
- 29 A RARE "YING CH'ING" CUP, with shadowy blue glaze, moulded in high relief, with double dragon handles, the tails coiling round the sides, the cup supported on a circular foot, 5in. ; *Sung Dynasty*
- ** From the Howard Back Collection.
Illustrated in "Old Furniture", June 1929, pl. 7, p. 111.
- 30 A PAIR OF "YING CH'ING" VASES, of inverted baluster shape with fluted bodies and trumpet necks, each with S scroll handles, supported on hollow circular feet, attractive colouring and shape, 7¾in. ; *Sung Dynasty* 2



- 31 AN IMPORTANT "YING CH'ING" BALUSTER VASE, of massive form, with short cylindrical neck, decorated round the body with a scroll in foliate design, the shoulders with a meander of peonies, the base with stiff leaves, a ferric-oxide splash on the lower part of the body, $11\frac{1}{8}$ in. ; *Sung Dynasty* ; wood cover 2

** The decoration resembles the well known mei p'ing vase in the Eumorfopoulos Collection (pl. 11, B. 34), illustrated by Hobson in "Chinese Art", 1927, pl. 23.

[See ILLUSTRATION]

- 32 AN INTERESTING VASE, with pear shaped body and trumpet neck decorated with two elephant handles and supported on a conical foot, the rim of which is neatly finished off, the thin brown ware body is covered with a large crackled greyish-white glaze, $7\frac{7}{8}$ in. ; ? *Sung Dynasty or later*

** Another Vase with somewhat similar Ko type crackle was exhibited at the Chinese Exhibition, 1935, cat. 1193.

- 33 A TZU CHOU VASE (*mei p'ing*), of inverted baluster shape, decorated on a green ground in black, with three barbed medallions containing figures of Immortals within floral borders at the shoulders and base, $10\frac{1}{2}$ in. ; *Sung/Ming Dynasty* ; (cf. *Art of the Chinese Potter*, pl. 83)

- 34 ANOTHER TZU CHOU VASE of similar shape decorated in black on a green ground with a bold band of small meander between narrower foliage borders at the neck and base, $9\frac{1}{4}$ in., *14th Century or later*

- 35 A Celadon Flower Pot of deep cylindrical form, supported on three short cabriole legs, and incised on a sea-green celadon glaze with a regular lattice design, the underside of the foot burnt red, $10\frac{1}{2}$ in. diam., $7\frac{1}{8}$ in. high ; *Ming Dynasty*

- 36 A Celadon octagonal Dish incised with a lotus medallion in the centre and radiating panels of similar flowers on the sides, $8\frac{1}{8}$ in. ; a small slender oviform Vase, moulded with a scrolling lotus design above stiff leaves, $6\frac{3}{8}$ in. ; and a good small Vase with globular body and trumpet neck, similarly decorated, $5\frac{3}{4}$ in. ; *Sung/Ming Dynasty* ; wood stands 5
- 37 A PAIR OF CELADON VASES of good quality, with oviform bodies, wide trumpet necks, carved with a scroll in floral design round the body between borders of stiff leaves at the necks and bases and horizontal grooving under the rims, $9\frac{1}{2}$ in. ; *Sung Dynasty* ; wood stands 4
- 38 A CELADON PERFORATED VASE AND STAND, the vase of bottle shape with *ling lung* sides, decorated with scrolling lotus below stiff leaves and dentate motifs round the neck, $11\frac{1}{2}$ in. ; the hexagonal stand with foliate biscuit sides perforated and supported on an openwork base, $6\frac{3}{4}$ in. wide ; *perhaps Ch'u - chou ; Yuan/Ming Dynasty* 2
- ** This type of ware is illustrated in "Chinesische Frühkeramik" by Rücker Embden, pl. 15, and Hobson, Eumorfopoulos cat., pl. 39.
- 39 AN ATTRACTIVE LUNG CH'UAN CELADON VASE, with baluster body and slightly flared neck boldly decorated in relief with a scrolling peony design round the body above a deep band of stiff leaves, the neck with three vertical flower sprays in relief and with metal rim, superb quality, $16\frac{1}{2}$ in. ; *Sung Dynasty* ; wood stand 2
- ** This type is illustrated by Hobson in "Chinese Pottery and Porcelain", vol. 1, pl. 22.

[See ILLUSTRATION]

- 40 A CHÜN YAO LARGE BULB BOWL, of circular shape, supported on three cloud-scroll feet, and covered with a crackled lavender glaze, the exterior decorated with two rows of studs, the underside with a brown glaze and a ring of spur marks, inside one of the feet is the numeral (*san*) 3, $9\frac{1}{2}$ in. ; *Sung Dynasty*

** For type see Eumorfopoulos cat., pl. 6, no. C5.



41 ANOTHER FINE CHÜN YAO BULB BOWL, of smaller size and with somewhat similar lavender coloured glaze, ornamented with two rows of studs and supported on three cloud-scroll feet, $7\frac{3}{4}$ in. ; *Sung Dynasty* (cf. *Hobson Eumorfopoulos cat.*, pl. 6)

42 A CHÜN DEEP BOWL, with rounded sides slightly contracted at the lip, the deep conical body terminating in a small foot, the whole covered with a close fitting almost "clair de lune" glaze, 6in. ; *Sung Dynasty*

** From the Eumorfopoulos Collection.

Illustrated by Hobson in the catalogue of that Collection, pl. 21, **B73**.

43 A CHÜN YAO BOTTLE, of pear shape, covered with a close fitting, blue-grey glaze, with small crackle of *Ju* type, the underside of the base similarly crackled, $5\frac{3}{4}$ in ; *Sung Dynasty* ; wood stand 2

44 A CHÜN YAO INCENSE BURNER, with a globular body, a short cylindrical neck, with everted rim and two fish-dragon handles, supported on three short monster legs with mask and ring handles in relief and fruit or flower sprays round the neck, the whole covered with a thick opalescent glaze of milky lavender grey, $7\frac{3}{4}$ in. high ; *Sung/Yuan Dynasty*

** From the Eumorfopoulos Collection, illustrated in the cat., pl. 19, C89.

45 A CHÜN YAO LARGE BULB BOWL of circular shape supported on three flower-scroll feet and decorated with a band of studs in a sunk border round the rim and another band around the base, coloured both inside and out with a lavender glaze enriched with a purple bloom tending to go brown round the raised parts, the base with a ring of spur marks and the numeral *i* (one), $9\frac{5}{8}$ in. diam. ; *Sung Dynasty*

** Hobson illustrates similar examples in the catalogue of the Eumorfopoulos Collection, pl. 6.

- 46 A MASSIVE CHÜN YAO INCENSE BURNER with globular body and short cylindrical neck, decorated in relief with lions' masks and leafage and covered with a thick flocculent lavender glaze enriched with brilliant purple splashes, supported on three feet, 8in. ; *Sung/Yuan Dynasty* ; wood stand
- ** From the Winkworth Collection, Sotheby's, 15th April, 1933, lot 28, illustrated.
- 47 AN ATTRACTIVE SMALL MA CHUN VASE (*mei p'ing*) of inverted baluster shape covered with a thick crackle glaze of rich pale blue tint, the underside of the base with similar glaze, 4 $\frac{7}{8}$ in. ; *Yuan/Ming Dynasty*
- ** This soft Chun Vase resembles the Alexander example sold in these rooms on 6th May, 1931, lot 102, illustrated by Hobson and Hetherington in the "Art of the Chinese Potter", pl. 39, and by Hobson in "Chinese Art", 1927, pl. 15.
- 48 A TZU CHOU TOWER of pagoda form with eight stories, decorated to simulate brick with perforated arches and doorways with figures in relief and with stupa-like finial, 24in. ; ?*Ming Dynasty*

CHINESE PORCELAIN OF THE MING DYNASTY

- 49 A pair of blue and white Bowls decorated on the exterior with an unusual design of a meandering vine branch with large bunches of grapes above an interlaced *j'ui* border, the interiors with medallions of the same fruit, 7 $\frac{1}{4}$ in. ; *six character mark of Chia Ching ; transition period*
- ** Exhibited at the Manchester City Art Gallery, 1913.
- 50 A WINE EWER (*hu p'ing*) with globular body, trumpet neck, scroll spout and handle, surmounted by a circular cover and painted in *su ni po* blue, with dragons and *feng huang* round the body and the Three Friends round the neck, 8in. ; *six character mark of Wan Li and period (type cf. cat. Chinese Exhibition, no. 1977)*

- 51 A PAIR OF STEM CUPS (*pa pei*), decorated on the exterior with sketchily drawn dragons in underglazed blue, the interior with scaly dragons in white slip within blue borders, supported on simulated bamboo stems, 4in., 16th Century 2
- ** Various patterns of Ming Stem Cups are dealt with by A. D. Brankston in "Early Ming Wares of Chingtechen", pls. 8, 9 and 10.
- 52 Two CUPS very similar in shape and decoration to those in the preceding lot, 3 $\frac{3}{4}$ in., 16th Century 2
- 53 KUAN YIN, a seated Figure of the Goddess of Mercy, with jewelled diadem and hooded robes, decorated in underglaze blue, with cloud bands, lattice diaper, flaming pearls and aquatic plants, terminating in an oblong base, 9 $\frac{3}{4}$ in.; *Wan Li*
- 54 A DOUBLE GOURD VASE, the lower bulb of square shape decorated with *Shou Lao* and his familiar the Deer carrying longevity symbols, the upper bulb with the same deity riding on a crane among cloud bands, the waist with four characters *Ch'iu Pao Ch'ang Ch'un* (seek peace and eternal spring), 10 $\frac{1}{2}$ in.; seal mark, *fu kuei chia ch'i*, *Wan Li*
- ** For type see Eumorfopoulos cat., pl. 1, D. 24, and Hobson, "Chinese Pottery and Porcelain", pl. 68, fig. 2.
- 55 A BEAKER of almost cylindrical form with slightly flared neck, enamelled in the upper zone with a scene perhaps intended to be Si Wang Mu and her fairy handmaid in procession regarded by three immortals in the Taoist Paradise, two zones of fruit and flowers below, 15 $\frac{3}{4}$ in.; *Wan Li*
- 56 A Flower Pot of plain circular form, decorated in cloisonné style with lotus sprays in turquoise and biscuit on an aubergine and purple ground, the interior plain turquoise, 7in., 16th Century (cf. "Wares of the Ming Dynasty", pl. 53, fig. i)

- 57 A BALUSTER VASE (*mei p'ing*) decorated on a dark blue ground in cloisonné style with flowering peony sprays, root ornament and *ling chih* fungus in turquoise and yellow, above a deep border of false gadroons round the base and Buddhistic symbols and pendant tassels round the shoulders, the neck restored, 12in., circa 1500

** Hobson illustrates the type in "Chinese Pottery and Porcelain", vol. 2, pl. 84.

- 58 AN ATTRACTIVE OVIFORM JAR of squat shape, decorated on an aubergine ground, with scrolling lotus design in turquoise and white, short circular foot rim, the underside with pale brown crackled glaze, 6 $\frac{1}{8}$ in., circa 1500

[See ILLUSTRATION]

- 59 A RARE BALUSTER VASE with double foliate handles in turquoise and white, the aubergine body decorated with sprays of lotus in turquoise and white, much in the same style as the jar in the preceding lot, 10 $\frac{5}{8}$ in., circa 1500; wood stand 2

[See ILLUSTRATION]

- 60 A FINE INCENSE BURNER AND COVER, the latter of circular shape with double lug handles, the whole covered with a brilliant turquoise *chi ts'ui* glaze, and ornamented on the cover and sides with archaic dragons, cloud bands and florettes in biscuit relief, the interior with a trace of ivory glaze, the whole supported on three short legs, 9 $\frac{1}{4}$ in. high, 7 $\frac{1}{2}$ in. wide, 16th Century; wood stand 3

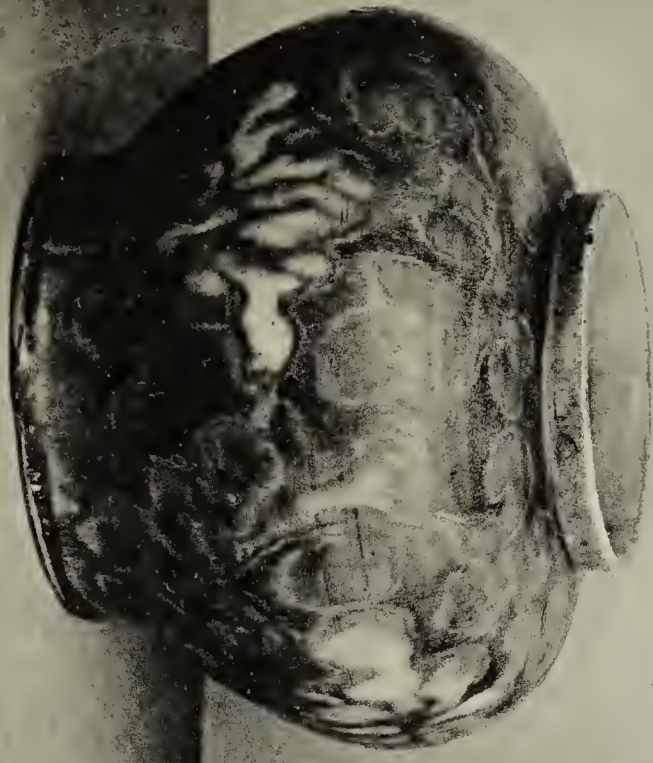
[See ILLUSTRATION]

- 61 A VERY FINE TURQUOISE DOUBLE GOURD VASE, decorated in cloisonné style with a *hui hui wen* design of scrolling lotus in white, yellow and pale aubergine on the upper and lower bulb between borders of stiff leaves, cloud bands, and *pa pao* symbols, 13 $\frac{1}{2}$ in., circa 1500

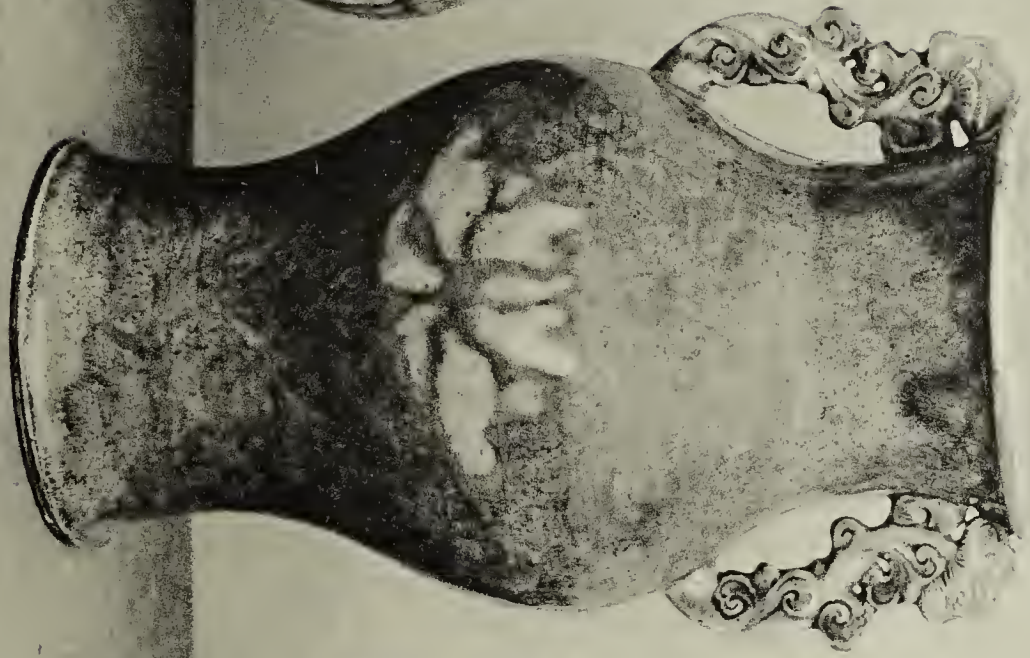
** Formerly in the Edson Bradley Collection.

For type see Eumorfopoulos cat., pl. 36, and "Art of the Chinese Potter", pl. 123.

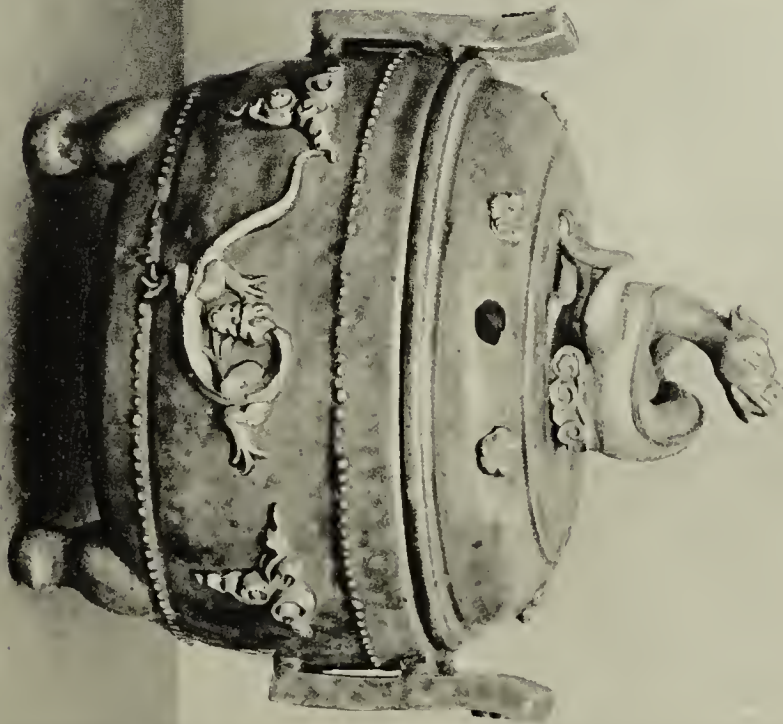
[See FRONTISPIECE]



58



59



60

- 62 AN IMPORTANT BALUSTERVASE, with trumpet neck and double rustic and foliate handles, covered with a *chi ts'ui* glaze and decorated in cloisonné style with two large lotus sprays in aubergine and white, the spreading foot with a band of moulded false gadroons in similar colours, cracked, $16\frac{1}{4}$ in., circa 1500

** Formerly in the Edson Bradley Collection.

Similar types exist in the British Museum and also in the Louvre.

- 63 A TALL GARDEN SEAT (*liang tun*) of barrel shape with hollow interior, and four moulded and perforated lions' masks and ring handles, the centre of the body with foliate motifs in turquoise and white on a ground of dark aubergine within studded borders and narrow bands in turquoise, the top with a floral medallion in similar colours, $19\frac{3}{8}$ in., 16th Century

- 64 A FINE WINE JAR of oviform shape with wide mouth and short cylindrical neck, decorated in cloisonné style on a rich dark blue ground, with cranes, lotus and other aquatic plants in white, yellow and turquoise, below a pendant tassel, false gadroons and cloud bands round the neck, $12\frac{1}{2}$ in., circa 1500 ; wood cover and stand 3

** A similar example in the Victoria and Albert Museum is illustrated in the Burlington Monograph on Chinese Art, pl. 12, and Eumorfopoulos cat., pl. 33, D. 157

- 65 A PAIR OF GARDEN SEATS (*liang tun*) of barrel shape, with pierced sides and bold lions' masks in relief, ornamented in yellow, white, turquoise and blue with cranes, peacocks among peonies and many other kinds of flowers within large studded borders in turquoise, the tops with kylins and brocade balls in orange, yellow and turquoise, $14\frac{5}{8}$ in., 16th Century 2

** Hobson illustrates a very similar example in the catalogue of the Eumorfopoulos Collection, D. 166.

- 66 A quadrangular porcelain Vase decorated in underglaze blue and enamel colours with four vertical panels of ladies at the Liberal Accomplishments of calligraphy, painting, music and checkers, the neck cut down, $14\frac{1}{2}$ in. ; *Wan Li* ; wood stand 2
- 67 A PAIR OF JARS AND COVERS of oviform shape, painted in underglaze blue and enamel colours with *mei jen* figures of ladies on garden terraces with trees on the reverse, the necks with flower sprays and the covers with *wa wa* subjects, 15in. ; *Wan Li* 4
- 68 A BEAKER of bronze form, very similarly decorated in enamel colours with figures on terraces round the trumpet neck, sprays of flowers on the central bulb and the conical base with the Three Fruits, symbolic of the Three Abundances of Years, Sons and Happiness, 16in. ; *Wan Li*
- 69 A PAIR OF JARS AND COVERS in enamel colours with a *shua wa wa* scene of the children's dragon festival against a mountainous background, the neck in flower sprays, the covers with *wa wa* subjects, 15in. ; *Wan Li* 4
- 70 A BEAKER of almost cylindrical form with slightly raised bulb, enamelled in colours round the neck with an Emperor surrounded by his attendants bringing to him refreshments, the bulb and lower part with flower sprays and the Three Fruits, $16\frac{1}{2}$ in. ; *Wan Li*
- 71 AN ENAMELLED BRUSH TRAY of oblong shape, divided into two compartments by a mountain range brush rests, the whole enamelled both within and without with scaly dragons and *feng huang* amongst cloud bands within fret borders in green, orange, yellow and red and underglaze blue, $12\frac{1}{8}$ in. ; *six character mark of Wan Li within a narrow label* ; wood stand 2



72



73

- 72 A RARE WHITE MOULDED BOWL, decorated with a moulded band of key fret and decorated in relief with five medallions containing figures of *Shou Lao* and the *Pa Hsien* in pairs with traces of gilding, between fillet borders of small meander and *j'ui* shape lattice at the neck and base, $5\frac{5}{8}$ in. diam. ; six character mark of *Ch'eng Hua* ; period of *Wan Li*

** See Hobson " Chinese Pottery and Porcelain ", vol. 2, pl. 78, " Wares of The Ming Dynasty ", pl. 34, figs. 1, 2 and 3, and " Art of the Chinese Potter ", pl. 107, fig. 1.

[See ILLUSTRATION]

- 73 A YELLOW GROUND SQUARE SCRAP BOWL of deep shape, decorated on a yellow ground with *feng huang* and *li wan* birds in brilliant green amongst foliage, the interior with a scrolling lotus border, supported on a square base, $7\frac{2}{3}$ in. ; six character mark and period of *Chia Ching*

** See Hobson " Wares of the Ming Dynasty ", pl. 27, fig. 1, and the Eumorfopoulos catalogue, pl. 21, D. 93.

[See ILLUSTRATION]

PORCELAIN OF THE CH'ING DYNASTY
WITH UNDERGLAZE BLUE AND ENAMEL DECORATION

- 74 A Vase of *yen yen* form, decorated on the baluster body and trumpet neck in blue and white with a scrolling and bold lotus pattern, $18\frac{1}{2}$ in. ; *K'ang Hsi*
- 75 A Ginger Jar, decorated in underglaze blue with reserve panels of Symbols of the Liberal Accomplishments on a " prunus on cracked ice " ground, 7in. ; and a cylindrical Vase with reserve panels on a blue " cracked ice " ground, decorated with dragons and lotus sprays, *ching tai pai hua*, $11\frac{1}{2}$ in., 18th Century ; wood cover and stands

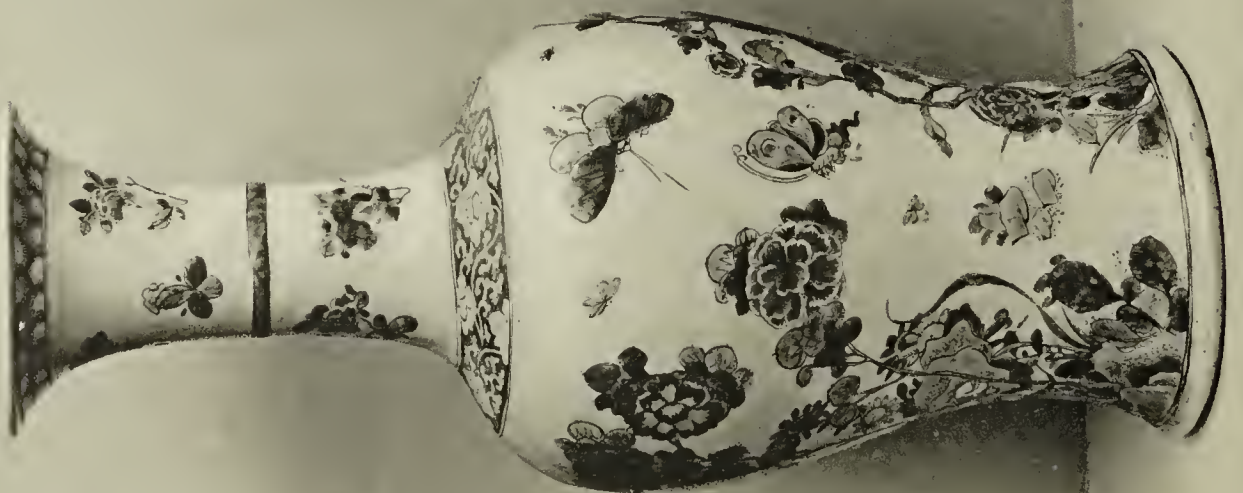
- 76 A Jar and Cover of squat baluster shape, decorated in underglaze blue with the Three Fruits symbolic of the Three Abundances, $7\frac{1}{2}$ in. ; and a soft paste bottle-shape Vase with dragon and cloud bands on a crackled *hua shih* glaze, $14\frac{1}{4}$ in. ; *Ch'ien Lung* ; wood stands 5
- 77 A pair of blue and white Bowls, decorated both within and without with a bold scrolling lotus design between borders of stiff leaves and lotus flower heads, $7\frac{5}{8}$ in. ; *six character mark of K'ang Hsi* ; wood stands 4
- 78 A small Vase with depressed globular body and cylindrical neck, decorated in light blue, with lotus and stiff leaves, $5\frac{1}{2}$ in. ; *K'ang Hsi* ; a globular Jar with similar decorations, $3\frac{1}{2}$ in. ; and a miniature baluster Vase, decorated with the Three Abundances on a *hua shih* crackled glaze, $3\frac{1}{4}$ in., 18th Century ; wood stand 5
- 79 A SET OF TWELVE PLATES, decorated in underglaze blue with an interior scene of figures enclosed by a lattice diaper border and four panels of flowers emblematic of The Seasons, $9\frac{1}{8}$ in. ; *six character mark of Cheng Hua* ; *K'ang Hsi* 12
- 80 A PAIR OF VASES of *Yen Yen* form, painted in underglaze blue on baluster bodies and trumpet necks, with *feng huang* flying 'mid scrolling peonies between crenellated borders at the necks and bases, $18\frac{1}{4}$ in. ; *K'ang Hsi* ; wood stands 4
- 81 A FINE BLUE AND WHITE ARMORIAL SERVICE boldly painted in the centre with the Arms of Johnstone within lattice diaper well borders, the rims with the crest and alternate sprays of flowers and branches of fruit, comprising:—sixty-one plates, eighteen soup plates, seven oblong dishes in sizes, four large circular dishes, $15\frac{1}{8}$ in. ; six shallow circular Fruit Dishes and two Jugs, $7\frac{1}{4}$ in. and $8\frac{5}{8}$ in. ; 18th Century 98
- ** This service was made for Colonel Johnstone, who commanded the British Artillery at the battle of Plassey, 1757.



85



86



85

- 82 A "famille-verte" Saucer Dish, decorated in the centre with the seated figure of an emperor giving an audience, the underside with sprays of flowers, $13\frac{3}{8}$ in. ; 17/18th Century
- 83 A "café-au-lait" Saucer Dish, decorated in low relief with scaly dragons pursuing flaming pearls 'mid cloudbands in yellow, the underside of the dish with similar ornament, 8in. ; six character mark of Chia Ching ; 18th Century
- 84 A "famille-verte" Bowl moulded with lotus leaves and decorated on the exterior with birds and flowers on a "café-au-lait" ground, the interior with underglaze blue decoration, $8\frac{1}{8}$ in. ; Seal mark ; K'ang Hsi ; wood stand 2
- 85 A PAIR OF "FAMILLE-VERTE" VASES, the baluster bodies surmounted by narrow trumpet necks, brilliantly enamelled with butterflies, flowering peonies, asters and root ornament, the shoulders with bands of "rouge-de-fer" floral meander, $14\frac{1}{2}$ in. ; K'ang Hsi

** From the Baron Hirsch Collection.

The shape is illustrated by Hobson in "The Later Ceramic Wares of China", pl. 19, fig. 1.

[See ILLUSTRATION]

- 86 A "FAMILLE-VERTE" SQUARE VASE, enamelled with reserve panels of flowers and symbols of the Liberal Accomplishments on a green stippled ground ornamented with flower sprays and florettes in aubergine, red, yellow, black and blue, 18in. ; Artemesia Leaf mark ; K'ang Hsi ; wood stand 2

[See ILLUSTRATION]

- 87 A "FAMILLE-VERTE" BRUSH POT of wide cylindrical form, enamelled with figures grouped round a table at which others are playing chequers, the reverse with a long inscription, 7in. diam., $5\frac{5}{8}$ in. high ; K'ang Hsi ; wood stand 2

- 88 A SAUCER DISH PAINTED IN CHINESE TASTE in "famille-verte" enamels with a *shan shui* subject, figures, trees and a mountainous landscape and river scene, with an inscription on the right, $13\frac{3}{8}$ in. ; *Ling chih mark* ; *K'ang Hsi*
- 89 A HEXAGONAL BOWL, painted in enamel colours with panels of flowering trees and plants, including magnolia, peony, prunus, lotus, etc., the interior with a wide diaper and flower-head border, 8in. ; *six character mark of Cheng Hua* ; *K'ang Hsi* ; wood stand
- 90 A PAIR OF DISHES PAINTED IN CHINESE TASTE, in "famille-verte", with pagodas, houses and mountainous landscapes and inscriptions, 10in. ; *K'ang Hsi* 2
- 91 A PAIR OF FINE "FAMILLE-VERTE" BOWLS of quadrangular form, brilliantly enamelled on the exterior with figure subjects, warriors and landscapes, the interiors with *shan shui* medallions in the centres and "rouge-de-fer" herring-roe borders round the rims, 8in. ; *six character mark of Hsuan Te* ; *K'ang Hsi* ; wood stands 4

[See ILLUSTRATION]

- 92 A GOOD QUALITY VASE of baluster shape with trumpet neck, brilliantly decorated in underglaze blue and famille verte enamels with an exotic bird, flowering peony trees, butterflies and root ornament, $9\frac{3}{4}$ in. ; *K'ang Hsi* ; wood stand 2

[See ILLUSTRATION]

- 93 A Cinerary Urn made for the Siamese market, and enamelled in red, green, yellow and white with conventional floral scrolls, medallions and taypanom, $6\frac{1}{2}$ in. ; another, larger, with a fruit and floral design, $8\frac{1}{2}$ in. ; and two others, smaller, $3\frac{1}{2}$ in. to 4in. ; *late 18th Century* ; wood stand 9



91



92



91



- 94 A large Cinerary Urn and Cover, decorated on a red ground in green, yellow and white, with foliate motifs and taypanom, $8\frac{1}{2}$ in. ; another, with vertical panels of flowering plants, $7\frac{1}{2}$ in. ; another, smaller, $5\frac{1}{2}$ in. ; and a Bowl and Stand elaborately decorated in enamel colours with taypanom and Norassing (half man and half horse), $5\frac{1}{2}$ in., late 18th Century ; wood stand

** For this lot and the preceding see Honey, V. and A. Guide, pl. 20b, and Hobson B. M. Guide, fig. 212.

- 95 A pair of " famille rose " Vases of almost *yen yen* form, enamelled with lotus and peonies on a plain white ground, $9\frac{1}{4}$ in. ; and a massive oblong Jardinière painted on the sides with birds, prunus and *ling chih* fungus, the top with a diaper border, 11in. ; *Ch'ien Lung* 2

- 96 A HUNTING BOWL of large size, painted in " famille rose " enamels on the exterior with reserve panels of European Fox Hunting Scenes and smaller panels with birds and flowers on a rich gold arabesque ground, $15\frac{1}{4}$ in. ; *Ch'ien Lung*

- 97 A PAIR OF FINE LARGE " FAMILLE-VERTE " VASES, with baluster bodies, trumpet necks and double elephant mask handles, brilliantly enamelled on the bodies with figure subjects and audience scenes, one probably intended for the summoning of feudatories by Pao Ssu, the consort of the Emperor Yu Wang, (B.C. 781-771), by a false alarm to rescue the Capital from a pretended Tartar assault ; the necks with flowers and *shua wa wa* subjects, $26\frac{1}{2}$ in. ; *K'ang Hsi* ; wood stands 4

** From the Morgan Collection cat. by Bushell and Laffan, nos. 493 and 494.

See Mayers " Chinese Readers Manual", p. 168 no. 541.

[See ILLUSTRATION]

- 98 A BISCUIT SHRINE of rectangular form with pagoda top under which is seated a small gilt bronze figure of Buddha within a gallery, steps leading down to a forecourt, the whole supported on an oblong base with dragons and cell diaper, the back painted with a prunus tree and three apertures, probably for brushes or incense, $10\frac{1}{8}$ in. ; *K'ang Hsi*
- 99 BISCUIT. Two Brush Washers in the form of garden ponds with pagodas and hills in miniature, in yellow, green and aubergine, the bases with *huang pan tien* glaze, 7in. ; *K'ang Hsi* 2
- 100 A MINIATURE GROUP comprising a Judge or an Emperor and three attendants in yellow, green and aubergine, on a white glazed bench with rectangular base, 4in. ; *K'ang Hsi*
- 101 KUAN YIN. A seated biscuit Figure of the Goddess of Mercy in green, yellow, aubergine and white robes, on a separate hexagonal stand pierced and ornamented with various diaper and *kuei feng* medallion in the centre, $13\frac{1}{2}$ in. total height ; *K'ang Hsi* 2
- 102 A PAIR OF FIGURES of a Youth and a Girl holding vases in "famille rose" enamels, wearing richly ornamented robes and standing on pierced rectangular bases decorated in yellow and "rouge-de-fer", $15\frac{1}{4}$ in. ; *Ch'ien Lung* 2

MONOCHROME GLAZES

- 103 A PAIR OF DISHES of shallow tazza form, decorated in low relief with medallions of *ling chih* fungus, bats and gourds, emblems of longevity and happiness, the undersides with radiating stiff leaves, supported on short conical feet, 5in. ; *four-character mark of Yung Cheng* 2

** From the Howard Back Collection.

- 104 A CELADON GOURD VASE of good quality with double loop handles, the lower bulb with a scrolling lotus design in low relief, divided from the upper which has a similar design by a double band of false gadroons in low relief, $11\frac{3}{4}$ in. ; *Ch'ien Lung* ; seal mark

** From the Howard Back Collection.

- 105 A PAIR OF LIBATION CUPS of square rhinoceros beaker form in white with archaic dragons and lizards in pink relief, the white bodies moulded with stiff leaves and key fret, $4\frac{3}{8}$ in. ; *Ch'ien Lung* 2

** Hobson illustrates the type in the B. M. Guide, 1937, fig. 166

- 106 A FINE SMALL " LANG YAO " BOTTLE with depressed globular body and cylindrical neck, decorated with a brilliant cherry red glaze, with specking on the shoulders turning a light colour near the top of the neck, 4in. ; *K'ang Hsi*

** Though the body is more depressed the glaze resembles the well-known small Schiller Vase illustrated by Hobson in the " Later Ceramic Wares of China ", pl. 21.

- 107 A PAIR OF RARE " LANG YAO " SMALL VASES of pear shape, covered with a brilliant cherry-red glaze, coagulating in darker tints round the bases enriched with green, the mouth rims a light tint, $5\frac{1}{4}$ in. ; *K'ang Hsi* ; wood stands . 4

- 108 PERSIAN. A Sultanabad Bowl of deep conical form, painted with a turquoise trellis design on a dark exterior, $8\frac{1}{4}$ in. ; another with a pseudo kufic border round the rim under a turquoise glaze, $6\frac{5}{8}$ in., 14th Century ; and a Vase of later date, $5\frac{1}{2}$ in. 3

CHINESE WORKS OF ART
METAL WORK, JADE, HARDSTONES, ETC.

- 109 AN EARLY BRONZE RITUAL FOOD VESSEL (*Kuei or Yi*) of circular shape, with double handles ornamented with winged monster heads and terminating in inscribed lugs, the sides with vertical ribs and ogre masks, supported on a hollow conical foot with narrower bands of the same motifs, green patination, $10\frac{1}{4}$ in. wide, $6\frac{1}{8}$ in. high; *Chou Dynasty*

** Somewhat similar vessels were exhibited in the Berlin Exhibition 1929, cat. no. 14, and the Chinese Exhibition, London, 1935, cat. no. 211.

[See ILLUSTRATION]

- 110 A MARBLE FIGURE OF A LION, seated and scratching its head with its off hind leg, the head turned sideways, the mane and muscles well depicted and the whole supported on a square base, $5\frac{1}{2}$ in.; *T'ang Dynasty*

** The Lion was a favourite subject in early Chinese sculpture, from the early wing form used as colossal guardians for tombs to the smaller type seen above; it probably came through Turkestan from Persia or may have been introduced by the Scytho-Sarmatians

[See ILLUSTRATION]

- 111 AN EARLY JADE VASE of inverted baluster form with six vertically lobed panels each containing a deeply cut archaic character surrounded by engraved and interlaced foliate motifs above a band of *ling chih* fungus round the base, a brownish-green tint, 6in.; possibly early *Ming Dynasty*

[See ILLUSTRATION]

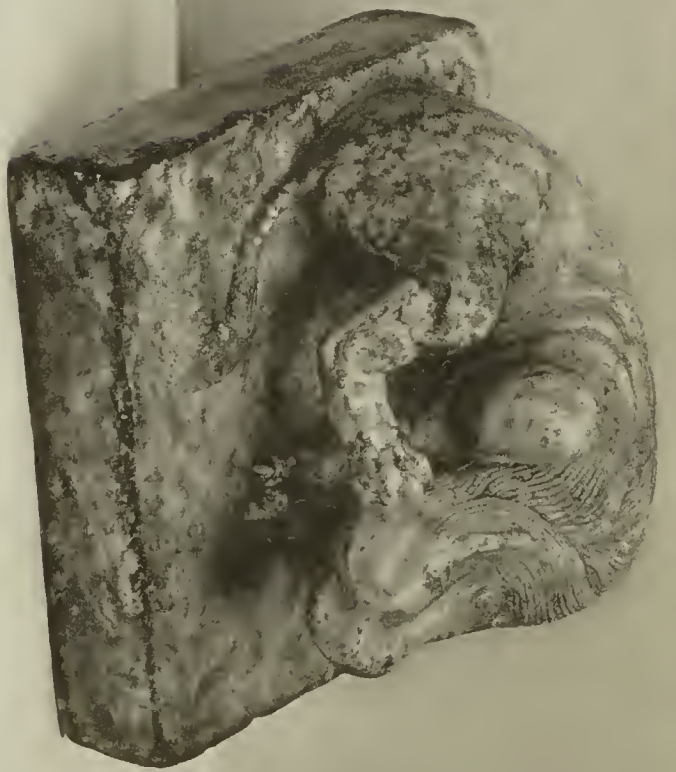
- 112 A JADE INCENSE BURNER of archaic bronze form with double mask handles, the rectangular body with a broad band of prunts and ribbed in relief, the neck and base engraved with dragons, grey-white tone with some rust markings and stone inlay, 8in.; *Ming Dynasty*; wood stand 2

** An example of similar technique is illustrated by George Frederic Lees in "Apollo", Feb. 1939, fig. 7.

[See ILLUSTRATION]



112



110



111



109

- 113 A pair of carved wood Figures of Lohan, in flowing robes with deep sleeves, their hands joined together in an attitude of devotion, supported on shaped terraced bases with traces of red, green, white and black pigment, $14\frac{1}{2}$ in. ; *Ming Dynasty* 2
- 114 CRYSTAL. A small crystal Vase and Cover of flattened baluster form with elephant-mask handles carved with lotus in relief, $3\frac{1}{2}$ in. ; ivory stand ; and a lotus-leaf crystal Bowl, $3\frac{7}{8}$ in. 4
- 115 CRYSTAL. A crystal Figure of a Quail, with finely carved plumage, $4\frac{3}{4}$ in. ; another of Pu tai, $3\frac{1}{2}$ in. ; and a small Cup with dragon handle, 3in. ; wood stands 6
- 116 CANTON ENAMEL. A pair of Canton enamel Bowls, well decorated on the exteriors with flocks of goats and deer on river banks with distant views of mountainous landscapes, the interiors with turquoise colouring, 7in. ; *Ch'ien Lung* ; wood stands 4
- 117 KUAN YIN. A massive and finely carved soapstone Figure of Kuan Yin, standing with her green robes folded about her, the hood also in green, the face of brown tint with green urna spot, red jewelled corsage and red flowing skirts, $18\frac{7}{8}$ in. ; *Ch'ien Lung* ; wood stand
- 118 TUNG FANG SO. A grey-green jade Figure, bearded, holding a fruiting branch of peaches over his shoulder, his long robes girdled at the waist, $4\frac{3}{4}$ in. ; a jade Fish in archaic style with rust marking, $9\frac{1}{2}$ in. ; and a small Clasp in brown jade with dragons carved in relief in *Han* style, 3in. 3
- 119 JADE. A lotus-leaf Bowl in translucent jade, carved with smaller leaves and buds, 6in. ; and a plain turned jade Cup and Saucer, also translucent, $5\frac{7}{8}$ in. ; *Ch'ien Lung* ; wood stands 6

- 120 A LAPIS LAZULI INK SCREEN of upright rectangular form engraved and gilt with a landscape on one side and a long inscription on the reverse, $7\frac{1}{8}$ in., 18/19th Century; wood stand 2
- 121 A JADE GROUP of three Kylins playing with a brocade ball round a flat baluster shape vase with double ring handles, in translucent grey-green jade, $6\frac{1}{8}$ in.; *Ch'ien Lung*; wood stand 3
- 122 A PAINTING of two dappled grey Horses, tethered to pegs, one depicted grazing, both with long full tails, manes and forelocks, each with four white socks, numerous inscriptions and Seals, oblong, framed, 36in. by 12in., 17/18th Century
- 123 SOAPSTONE. A finely carved Soapstone Figure of a seated Sage in long flowing robes girdled to the waist and engraved with cloud bands, floral medallions and borders, holding a *j'ui* sceptre in his right hand, on a perforated base, warm marble tint enriched with red, 8in.; *Ch'ien Lung*
- ** For Soapstone Figures of this quality see Sotheby's Catalogue of the Winkworth Collection, 29th April, 1938, lots 542-587; and F. Gordon Roe "The Connoisseur", Nov. 1920.
- 124 A JADE VASE AND COVER, of flattened pear shape, with elephant mask double handles, the sides carved in high relief with a conventional flowering lotus design, the cover surmounted by an archaic dragon, translucent grey-green tint, $9\frac{1}{2}$ in.; wood stand 2
- 125 A MASSIVE LAPIS CARVING of the Taoist Mountain Retreat in the Happy Isles of the Blest, carved with pine trees, mountain torrents and a long inscription on the back, 10in.; *Ch'ien Lung*; wood stand 2
- ** A massive carving of the same material representing Singhalaputra was illustrated in colour by Charles Nott in "The Connoisseur", June 1937.

- 126 A MASSIVE JADE BOTTLE with slightly flared trumpet neck, boldly carved in high relief, with two scaly dragons pursuing flaming pearls mid *ling shih* cloud bands, supported on a circular foot, grey-white tone with dark striations, $9\frac{1}{2}$ in., 17/18th Century ; wood stand 2
- 127 PAINTING. A Painting on silk of a mountain gorge with a Pavilion and figures, including a man in a sampan, with trees, clouds and distant mountains, 6ft. 4in. by 3ft. 3in., 17/18th Century ; framed
- 128 PAINTING. An attractive Painting on silk of a flowering peony tree and root ornament, in soft shades of green, purple, red, blue and white, 5ft. 2in. by 3ft., 17/18th Century ; framed

END OF SALE

LONDON :
PRINTED BY KITCHEN & BARRATT, LTD.
PARK ROYAL ROAD, N.W.10

THE HARCOURT JOHNSTONE COLLECTIONS

SOTHEBY & Co.'s

SALE OF

THE VERY CHOICE COLLECTION OF CHINESE CERAMICS, JADE AND HARDSTONE CARVINGS, Etc.

The Property of
Harcourt Johnstone, Esq.

*The Entire Collection has been exhibited on Loan at thirty of the
principal Provincial Museums in this Country*

13th June, 1940

PRICES AND BUYERS' NAMES

LOT		£	s.	d.	LOT		£	s.	d.
1	Gardiner	1	10	0	22	Bridgeman	1	0	0
2	Passed	—	—	—	23	Faussett, Lady ..	1	0	0
3	Ohly	2	0	0	24	Taylor	3	5	0
4	Passed	—	—	—	25	Sparks	8	10	0
5	Moss	1	10	0	26	Taylor	3	15	0
6	Sparks	7	0	0	27	Taylor	2	0	0
7	Sparks	7	10	0	28	Watson	3	10	0
8	Baer	4	15	0	29	Jones, O. H.	17	0	0
9	Moss	1	10	0	30	Moss	16	0	0
10	Moss	5	10	0	31	Watson	38	0	0
11	Baer	5	0	0	32	Moss	6	10	0
12	Baer	3	10	0	33	Bridgeman	2	5	0
13	Passed	—	—	—	34	Bluett	3	10	0
14	Moss	1	0	0	35	Bluett	4	10	0
15	Taylor	3	15	0	36	Bluett	7	10	0
16	Moss	9	10	0	37	Sparks	34	0	0
17	Moss	11	0	0	38	Sparks	20	0	0
18	Baer	1	15	0	39	Sparks	40	0	0
19	Brockbank	3	15	0	40	Spottiswood, Mrs.	3	15	0
20	Warren, N.	17	0	0	41	Moss	52	0	0
21	Passed	—	—	—	42	Moss	27	0	0

LOT		£	s.	d.	LOT		£	s.	d.
43	Taylor	13	0	0	87	Moss	8	0	0
44	Fransella	18	0	0	88	Kimber	9	0	0
45	Taylor	48	0	0	89	Moss	4	10	0
46	Rudorff	8	0	0	90	Watson	14	0	0
47	Moss	33	0	0	91	Moss	42	0	0
48	Passed				92	Boode	21	0	0
49	Passed				93	Marchant	1	0	0
50	Boode	21	0	0	94	Marchant	1	5	0
51	Norton	17	0	0	95	Marchant	2	0	0
52	Norton	6	0	0	96	Vandekar, E. ..	9	0	0
53	Boode	7	10	0	97	Partridge, F. ..	160	0	0
54	Yamanaka	19	0	0	98 }	Fransella	4	0	0
55	Moss	5	0	0	99 }				
56	Partridge, F. ..	11	0	0	100	Moss	29	0	0
57	Boode	26	0	0	101	Perkins	7	10	0
58	Tilley	35	0	0	102	Sparks	36	0	0
59	Sparks	38	0	0	103	Bluett	8	10	0
60	Partridge, F. ..	130	0	0	104	Moss	8	0	0
61	Kimber	340	0	0	105	Fransella	6	0	0
62	Watson	42	0	0	106	Partridge, F. ..	40	0	0
63	Kendall	16	0	0	107	Partridge, F. ..	42	0	0
64	Kimber	90	0	0	108	Warren, N. ..	2	15	0
65	Passed				109	Fawcett	38	0	0
66	Bridgeman	1	0	0	110	Fransella	14	0	0
67	Fransella	23	0	0	111	Spink	14	0	0
68	Fransella	8	10	0	112	Moss	14	0	0
69	Moss	17	0	0	113	Harris, E. V. ..	8	0	0
70	Good, L. T. ..	8	10	0	114	Stevens, Dr. ..	3	15	0
71	Yamanaka	28	0	0	115	Spink	6	15	0
72	Moss	32	0	0	116	Watson	4	10	0
73	Spink	28	0	0	117	Spink	3	10	0
74	Passed				118	Bluett	9	0	0
75	Rushton	3	10	0	119	Bluett	8	10	0
76	Rudorff	2	10	0	120	Kimber	5	10	0
77	Spink	7	10	0	121	Moss	6	0	0
78	Bluett	6	10	0	122	Harris, E. V. ..	36	0	0
79	Todd	7	0	0	123	Spink	54	0	0
80	Gotthilf	4	0	0	124	Spottiswood ..	3	5	0
81	Kimber	90	0	0	125	Spink	18	0	0
82	Moss	1	0	0	126	Spink	36	0	0
83	Taylor	16	10	0	127 }	Bluett	2	0	0
84	Passed				128 }				
85	Partridge, F. ..	95	0	0					
86	Watson	52	0	0					
					Total of Sale ..		£2,477	15	0



THE EUMORFOPOULOS & HARCOURT JOHNSTONE COLLECTIONS

CATALOGUE

OF

MODERN POTTERY

by VYSE, W. STAITE MURRAY, BERNARD LEACH
KATHERINE H. D. PLEYDELL-BOUVERIE, ETC.

MODERN SCULPTURE AND BRONZES

by EPSTEIN, MESTROVIC, GAUDIER-BRZESKA, SIMMONDS, ETC.

Collected by the late George Eumorfopoulos, Esq.

[SOLD BY ORDER OF MRS. EUMORFOPOULOS AND OF THE EXECUTORS]

BRONZES

by EPSTEIN AND FRANK DOBSON

A FINE PAIR OF ORMOLU FIGURES OF NYMPHS

by E. M. Falconet

**AN IMPORTANT GREEK MARBLE TORSO OF APHRODITE
FROM THE STUDIO OF PRAXITELES**

A FINE ARMORIAL TAPESTRY AFTER D. TENIERS, Jun., 1683

AND

AN ANTIQUE KHORASSAN CARPET

The Property of Harcourt Johnstone, Esq.

"

WHICH WILL BE SOLD BY AUCTION

BY MESSRS

SOTHEBY & CO.

G. D. HOBSON, M.V.O.

F. W. WARRE, O.B.E., M.C.
C. V. PILKINGTON.

C. G. DES GRAZ

P. C. WILSON.

Auctioneers of Literary Property & Works illustrative of the Fine Arts.

AT THEIR LARGE GALLERIES, 34 & 35, NEW BOND STREET, W.1

On FRIDAY, the 14th of JUNE, 1940

AT ELEVEN O'CLOCK PRECISELY

On View at least Two Days Previous.

Catalogues may be had.

Illustrated Catalogue (7 plates)

A Printed List of all Prices and Buyers' Names at this sale can be supplied for two shillings, and for all sales at low subscription rates

CONDITIONS OF SALE

- I. The highest bidder to be the buyer. If any dispute arise the Auctioneer shall have absolute discretion to settle it ; and to put any disputed lot up again.
- II. No person to advance less than 1s. ; above five pounds 5s., and so on in proportion.
- III. All lots are put up for sale subject (a) to any reserve price imposed by the seller and (b) to the right of the seller to bid either personally or else by any one person who may be the Auctioneer.
- IV. The purchasers to give in their names and places of abode, and if required, to pay down 10s. in the pound or more, in part payment of the purchase money ; in default of which the lot or lots purchased may be immediately put up again and re-sold.
- V. All lots are sold as shown with all faults, imperfections, and errors of description. Messrs. Sotheby & Co. act as agents ; they have full discretion to refuse any bidding or to withdraw any lot or lots from the sale without in either case giving any reason ; they are not responsible for errors of description or for genuineness or authenticity of any lot or for any fault or defect in it. Messrs. Sotheby make no warranty whatever.
- VI. The lots to be taken away at the buyer's risk and expense, immediately after the conclusion of the sale ; in default of which Messrs. Sotheby & Co. will not hold themselves responsible if the same are lost, stolen, damaged or otherwise destroyed, but they will be left at the sole risk of the purchaser, and subject to a charge for warehousing. If, at the expiration of Two Days after the conclusion of the sale, unless otherwise agreed, the lots are not cleared or paid for, they may then be sold immediately, either publicly or by private treaty, without any notice being given to the defaulter.
- VII. Upon failure of the buyer to comply with any of the above conditions, the money deposited in part-payment shall be forfeited ; and the defaulter at this sale shall make good any loss arising from the re-sale, together with the charges and expenses in respect of both sales.
To prevent confusion no purchases can be claimed or removed during the sale.

Messrs. SOTHEBY & Co.
are prepared to execute bids, and in addition to advise intending purchasers as far as possible, if requested by them to do so, without making any charge for either service. Lots will be procured as cheaply as is permitted by other bids or reserves, if any.

34 and 35, New Bond Street, London, W.1

Telegraphic Address :
" Abinitio, Wesdo, London."
A.B.C. Code, 5th Edition.

Telephone : (3 lines)
Mayfair 6682, 6683, 6684

In sending Commissions this Catalogue may be referred to as " CHERRY."

RESERVES AND COMMISSIONS SENT BY TELEPHONE ARE ACCEPTED ONLY AT THE SENDER'S RISK AND MUST BE CONFIRMED BY LETTER OR TELEGRAM.

THE EUMORFOPOULOS & HARCOURT JOHNSTONE COLLECTIONS

CATALOGUE
OF
FINE SCULPTURE AND BRONZES
OF VARIOUS PERIODS
IMPORTANT TAPESTRIES, MODERN POTTERY
RENAISSANCE WORKS OF ART, ETC.

DAY OF SALE :

Friday, 14th June, 1940

AT ELEVEN O'CLOCK PRECISELY

The Collections of the late George Eumorfopoulos, Esq.

[SOLD BY ORDER OF MRS. EUMORFOPOULOS AND OF THE EXECUTORS]

MODERN POTTERY

- 1 A stoneware Bowl, by *Bernard Leach*, covered with a mottled blue-grey glaze, $3\frac{1}{2}$ in. high; a small Bowl with fluted ornament, $3\frac{1}{2}$ in. diam.; a mottled grey Vase with tortoise cover, $4\frac{1}{4}$ in. high; and a grey crackled Vase, $4\frac{1}{2}$ in. high 5

** The bowl by Bernard Leach exhibited at the Exposition Internationale, Paris, 1937, cat. no. 2733.

- 2 A stoneware Bowl, by *W. Staite Murray*, with buff-coloured glaze, painted with conventional designs in brown, $4\frac{1}{4}$ in. diam.; another with reddish-brown glaze, with green and metallic mottled decoration, $8\frac{1}{2}$ in. diam.; and a light buff-coloured Bowl, the exterior with spiral ornament in dark brown, 10in. diam. 3

** The first-named exhibited at the same Exhibition, cat. no. 2786.

- 3 A globular Bowl of stoneware, by *Bernard Leach*, with bluish-grey glaze, $3\frac{1}{4}$ in. high; a brown glazed Bowl, by *W. Staite Murray*, $3\frac{3}{4}$ in. diam.; another, $3\frac{3}{4}$ in. diam.; a Vase with mottled buff glaze, $3\frac{1}{4}$ in. high; and a circular Dish with dark-brown glaze, having metallic splashes in "rouge-de-fer", $8\frac{1}{2}$ in. diam. 5

** The bowl by *W. Staite Murray* exhibited at the same Exhibition, cat. no. 2777.

- 4 A large Flower Pot and Stand, by *Katherine H. D. Pleydell-Bouverie*, in unglazed stoneware, decorated with a broad band of leaf scrolls between rows of grooved lines, with flat ribbed handles, $9\frac{1}{2}$ in. high; and a massive Bottle of ovoid form with short neck, covered with a reddish-brown glaze splashed with grey at the rim, 16in. high 3

** The first-named exhibited at the same Exhibition, cat. no. 2754.

- 5 A square Vase, by *Vyse*, 1935, covered with a celadon glaze mottled with pink, with ring handles at the sides, 7in. high; a French Bottle with short trumpet neck and a band of incised scrolls round the shoulders, 8in. high; and a rouleau Vase, painted with foliage on a greyish-white ground, $9\frac{1}{2}$ in. high 3

- 6 A Bowl, by *Vyse*, 1936, of shallow form with marbled glaze in shades of grey and brown, the exterior metallic brown, $6\frac{3}{4}$ in. diam.; another Bowl with light grey interior, the exterior with "hare's fur" glaze in temmoku style, 7in. diam.; a massive leaf Dish, $8\frac{1}{4}$ in. wide; two Bowls; and an enamelled deep Bowl with straight sides 6

- 7 An oviform Jar, by *Norah Braden*, covered with a mottled buff glaze, 8in. high; a tall narrow Vase with vertical ribbing, cream and brown glaze, 18in. high; another Vase with foliage and scrolls on a brown ground, 12in. high; and a Vase of flattened form decorated with a bird, 9in. high 4

** The first-named exhibited at the Exposition Internationale, Paris, 1937, cat. no. 2751.

- 8 A globular Jar, by *Katherine H. D. Pleydell-Bouverie*, covered with a crackled celadon glaze, $5\frac{1}{4}$ in. high ; an oviform Vase moulded in compartments and with a mottled greenish-brown glaze, 8in. high ; and a pear shape Vase, the green glaze with ferruginous splashes, 11in. high 3
- ** The first-named exhibited at the same Exhibition, cat. no. 2756.
- 9 A stoneware Vase, by *Katherine H. D. Pleydell-Bouverie*, of inverted pear shape, covered with a crackled brown glaze, $8\frac{1}{2}$ in. high ; another with mottled grey and brown glaze, 10in. high ; and a brown glazed Vase decorated in cream and dark brown, $9\frac{1}{2}$ in. high 3
- ** The first-named exhibited at the same Exhibition.
- 10 AN ATTRACTIVE GLOBULAR JAR, by *Bernard Leach*, of grey glazed stoneware, with a broad band of incised floral and foliate decoration round the centre, 7in. high
- ** Exhibited at the Exposition Internationale, Paris, 1937, cat. no. 2779.
- 11 A stoneware baluster Vase, by *Vyse*, 1935, with foliate and other motifs in dark brown on a greenish-brown ground, $9\frac{1}{2}$ in. high
- 12 A stoneware tall Vase, with designs in cream on brown ground, $16\frac{1}{2}$ in. high ; a Vase with tall trumpet neck, the pale buff glaze with shadowy grey and brown decoration, $12\frac{1}{4}$ in. high ; and another Vase with scroll designs in blue-grey on a grey ground, $11\frac{1}{2}$ in. high 3
- 13 A FINE INVERTED PEAR SHAPE VASE, by *Vyse*, 1936, decorated in Tzu-chou style with leafage and scrolls in cream and brown, $13\frac{1}{2}$ in. high

FINE MODERN BRONZES AND SCULPTURE

LEON UNDERWOOD.

- 14 VIOLIN RHYTHM
Stylized nude female figure in bronze 22in.

GAUDIER-BRZESKA.

- 15 THE DANCER
Nude female figure in bronze, *signed and dated 1913* 30in.

FRANK DOBSON.

- 16 A FEMALE NUDE, *signed Dobson*
Bronze 10½in. by 13in.

DORA GORDINE.

- 17 HEAD OF A BABY, *signed*
Bronze, on wood stand 7½in.

FRANK DOBSON.

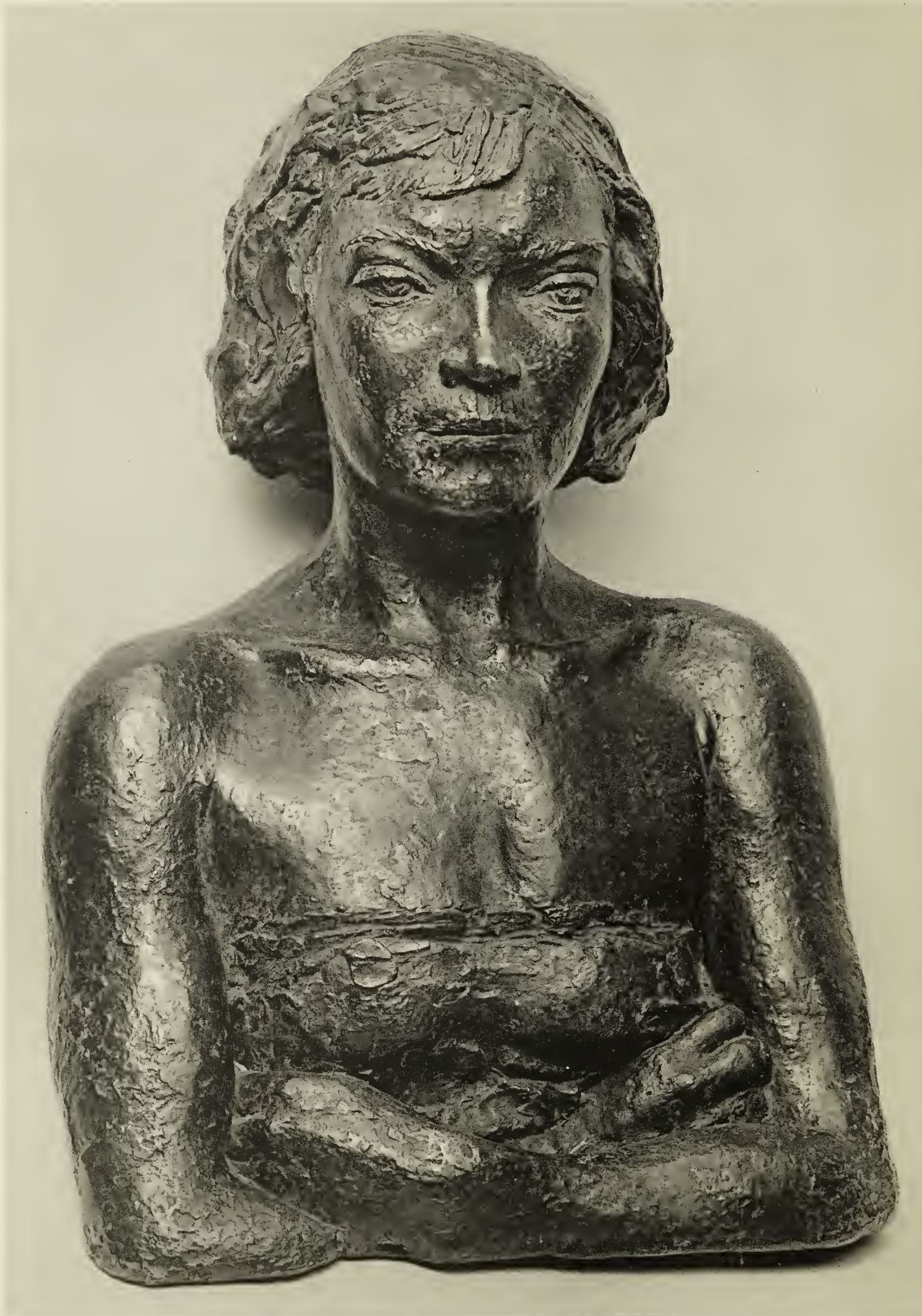
- 18 HEAD OF A GIRL
Bronze, on wood base 11½in.

JACOB EPSTEIN

- 19 HEAD OF AN INFANT
Bronze, on green marble pedestal 7in.

JACOB EPSTEIN.

- 20 NAN
Bronze portrait Bust, wood base 13¼in.



JACOB EPSTEIN.

- 21 ROM
Bronze Head of a Child, on marble pedestal 9in.

JACOB EPSTEIN.

- 22 EUPHEMIA LAMB
Bronze Bust 21in.
** Exhibited at the International Exhibition, Venice, 1938.

JACOB EPSTEIN.

- 23 BETTY MAY
Bronze Bust 21in.

[See ILLUSTRATION]

CELINE EMELIAN.

- 24 BRONZE PLAQUE, *signed*
Angel bearing a cup, on wood stand 7in. by 5½in.

GAUDIER-BRZESKA.

- 25 MADEMOISELLE B.
Bronze Head of heroic size, on marble pedestal
and the original plaster cast 16in. 2

GAUDIER-BRZESKA.

- 26 SEPULCHRAL FIGURE
Bronze seated figure of a nude woman, on marble base 14½in.

MESTROVIC.

- 27 SEATED FIGURE OF A WOMAN
Bronze 30in.

MESTROVIC.

- 28 STUDY FOR PIETA
Plaster Relief 21½in. by 14in.
** Exhibited at the Manchester City Art Gallery

BARBARA HEPWORTH.

- 29 DOVES
A Group in Parian marble 11½in.
** Exhibited at the Beaux Arts Gallery, London, 1928.

JOHN SKEAPING.

- 30 BARBARA HEPWORTH
A marble Bust Portrait 19½in.

GAUDIER-BRZESKA.

- 31 MATERNITY
A marble Group on granite base 11¼in.

FRANK DOBSON.

- 32 BOY'S HEAD AND DOVE
A marble Carving 8½in.



R. P. BEDFORD.

- 33 A SIENNA MARBLE CARVING representing coiled stems ending in a pendent tulip head, on rectangular base 24in.
- 34 ANOTHER in the form of three coiled stems emerging from three other coils at the base, on rectangular base 23in.

BARBARA SKEAPING.

- 35 MOTHER AND CHILD, *signed*
Marble half-length Group 19in.

MODIGLIANI.

- 36 A STONE CARVING in the form of a female head with flattened features 15½in.

BARBARA SKEAPING.

- 37 MASSIVE SEATED FIGURE OF A NUDE WOMAN, *signed and dated 1927*
In veined marble 21in.

MESTROVIC.

- 38 THE VIRGIN AND CHILD, *signed*
Half-length marble Group 27in.

[See FRONTISPIECE]

SIMMONDS.

- 39 A MASSIVE LUSTROUS BLACK FIGURE OF A HORSE
On rectangular wood base 17in. by 29in.

[See ILLUSTRATION]

MESTROVIC.

- 40 A WHITE MARBLE RHOMBOID with perforated "eye" 14in.

JOHN SKEAPING.

- 41 A TERRA-COTTA HALF-LENGTH GROUP OF THE VIRGIN AND CHILD, the Virgin's head-dress and mantle with blue glaze 11½in.

The Property of Harcourt Johnstone, Esq.

FINE MODERN BRONZES, ETC.

- 42 The Madonna and Child, a standing figure in bronze, by *Emile Bourdelle*, pupil of Rodin, 21in.
- 43 A Marble Head of a Woman, by *Dimitri Tsapline*, with a bandeau round her hair, "fleur de pêche" tints, signed, 12¼in.
- 44 A Bone Carving of a Leopard, by *Dimitri Tsapline*, signed, 32in.
- 45 A BRONZE HEAD OF A YOUNG NEGRO, by *L. Leslie*, signed and dated 1938, 12in. ; on wood plinth
- 46 A BRONZE FEMALE TORSO, by *Frank Dobson*, 9in. ; on square marble plinth
- 47 A BRONZE NUDE FEMALE FIGURE, by *Frank Dobson*, signed, seated with legs crossed, resting on her right arm, on rectangular bronze base, 12½in. by 8¾in.



50



51



49

- 49 AN ATTRACTIVE BRONZE HEAD OF MEUM, by *Jacob Epstein*, green patination, 12in., rectangular base

[See ILLUSTRATION]

- 50 A FINE BRONZE HEAD OF A GIRL, by *Jacob Epstein*, green patination, 13in., rectangular base

[See ILLUSTRATION]

- 51 AN IMPORTANT BRONZE BUST OF ISOBEL POWYS, by *Jacob Epstein*, full bust with draped scarf over the shoulder, 20in.; oval wooden base

** Exhibited at the Leicester Galleries, 1931.

* Mentioned in "The Sculptor Speaks" by Epstein and Haskell, p. 189.

[See ILLUSTRATION]

ANTIQUÉ MEDIEVAL AND RENAISSANCE

STATUARY AND WORKS OF ART

- 52 A SPANISH IVORY GROUP of the Immaculate Conception, the Virgin on a crescent supported by cherubs and clouds, the hands in an attitude of prayer, the flowing robes with traces of red and green pigment, 16in., 16/17th Century; carved wood stand
2

- 53 An Italian 16th Century small bronze Figure of a Cat, seated with a rat in its mouth, 5in.; on marble plinth; and another Bronze of a kneeling female Satyr holding a conch shell in her right hand, 7½in.; on square marble plinth (*the Cat figured by Bode*)
2

- 54 A French terra-cotta Figure of a seated Girl, with her head turned looking downwards over her right shoulder, her hair in long plaits, lightly draped bust, her left hand resting on an urn at her side, square base, 10in. ; glazed case 2
- 55 A PAIR OF FINE ORMOLU FIGURES OF NYMPHS, by *Etienne Maurice Falconet*, depicted nude seated on drapery supported by oval bases, each with a dove, one of which is dead, perhaps emblematic of love dead, both on white oval marble plinths with chased ormolu borders of fine quality, 8in. ; glazed cases 4
- [See ILLUSTRATION]
- 56 TWO ROMAN GLASS URNS AND COVERS, with ovoid bodies with traces of iridescence and with massive double loop handles on the shoulders, the covers with spiked and button finials, 14in., 2/4th Century ; glazed case, 30in. 5





- 57 AN IMPORTANT GREEK MARBLE TORSO OF APHRODITE, of the same type and size as the statue from Ostia in the British Museum (*B.M. Catalogue of Sculpture*, vol. III, p. 29, no. 1577). No other replicas are known. The goddess is represented as disrobing to enter the sea, the subject and pose being closely similar to those of the Aphrodite made by Praxiteles in the second quarter of the fourth century B.C. and bought by the Cnidians, to become later the most famous statue of the ancient world, and the standard of womanly beauty among ancient critics.

This similarity of motive, taken together with the minute correspondence in the actual details of the body between the statue in the British Museum and the present torso, makes it clear that both originals were inspired by the same model, and that both must have issued from the studio of Praxiteles within a few years of each other; possibly they were executed on the same occasion. The broad sure treatment of the forms shows the Second Attic School at its highest, the back especially being admirable for the restraint and beauty of its modelling. *fine Greek work, Pentelic marble, unrestored, 22 $\frac{3}{4}$ in. high; purchased in Rome about the year 1854*

** From the Sir John Leslie Collection, Sotheby's Sale, 9th June, 1925, lot 312.

Exhibited on Loan at the National Museum of Wales, Cardiff.

[See ILLUSTRATION]

TAPESTRIES AND CARPETS

- 58 A FLEMISH VERDURE TAPESTRY PANEL woven with a woodland scene with lakes and parkland in the distance, within a wide red floral border ornamented with cartouches and masks, 11ft. high by 10ft. 3in. wide, 17th Century
- 59 A FLEMISH TAPESTRY PANEL woven with figures in a woodland scene, in the centre a lady seated in an arbour playing with a dog, in the distance a village and peasants at various pursuits, within a wide border with musical trophies, musicians and horseman, 8ft. 8in. high, 14ft. 6in. wide, 17th Century
- 60 A BRUSSELS TAPESTRY PANEL woven with the subject of the sack of a City, in the foreground a Roman Emperor on a prancing charger with legionaries bearing banners and standards, 8ft. 6in. high by 6ft. 4in. wide, 17th Century
- 61 A FINELY WOVEN BRUSSELS TAPESTRY PANEL, by *I. le Clerc after D. Teniers, Jun. Pinx*, 1683, with the subject of "Love binding Time", the kneeling figure of Time below a coat-of-arms held in a cartouche by cupids and angels, within a framed surround of drapery festoons and swags of flowers supported by putti, the whole in attractive colours, 11 ft. 10in. high by 10ft. 4in. wide, 17th Century

** The David Teniers Jun. is the third of that name who was responsible for armorial designs of William and Mary and various Continental Nobles and also the set of the Continents. See Marillier, "Teniers Tapestries", p. xviii.

[See ILLUSTRATION]



D. FEMERS
W. N. PINK: 1689

P. E. CLERO

- 62 AN ANTIQUE KHORASSAN CARPET woven with a cream pole medallion, and a bold floral and leaf design in Herati style on a blue field, enclosed by a wide red floral border between two narrower golden borders, 24ft. 4in. by 9ft. 10in.
- 63 A ZIEGLER CARPET with a dark blue and ivory stepped pole medallion on a red field, enclosed by a pale blue surround with a wide dark blue border within two narrower red and ivory borders, 14ft. 10in. by 11ft. 9in.

END OF SALE

LONDON
PRINTED BY KITCHEN & BARRATT, LTD.
PARK ROYAL ROAD, N.W.10

THE EUMORFOPOULOS & HARCOURT JOHNSTONE COLLECTIONS

SOTHEBY & Co.'s

SALE OF

FINE SCULPTURE AND BRONZES

OF VARIOUS PERIODS

IMPORTANT TAPESTRIES, MODERN POTTERY

RENAISSANCE WORKS OF ART, ETC.

14th June, 1940

PRICES AND BUYERS' NAMES

LOT		£	s.	d.	LOT		£	s.	d.
1	Zwemmer	2	0	0	33	Zwemmer	1	0	0
2	Collis	4	10	0	34	Mott	1	0	0
3	Zwemmer	3	0	0	35	Fawcett	5	0	0
4	Sparks	2	0	0	36	Brown & Phillips	26	0	0
5	Good, L.	1	0	0	37	McGee	3	0	0
6	Zwemmer	2	0	0	38	Kerin	17	0	0
7	Read	3	10	0	39	Vlasto	62	0	0
8	Good, L.	3	0	0	40	Read	3	10	0
9	Sedgwick, Mrs.	4	0	0	41	Williams, S. ..	6	0	0
10	Good, L.	1	15	0	42	Abbo	4	0	0
11	Carnegie	2	5	0	43	Lessore	2	0	0
12	Read	1	10	0	44	Lessore	2	0	0
13	Good, L.		10	0	45	Passed			
14	Brown & Phillips	5	0	0	46	Savile	10	10	0
15	Storran Gallery	32	0	0	47	Savile	16	0	0
16	Good, L.	8	10	0	49	Stedman	30	0	0
17	Vlasto	4	0	0	50	Stedman	21	0	0
18	Good, L.	2	10	0	51	Brown & Phillips	28	0	0
19	Brockbank	25	0	0	52	Korda	24	0	0
20	Good	12	0	0	53	Black, D.	76	0	0
21	Brown & Phillips	6	10	0	54	Sparks	4	0	0
22	Thornton	11	0	0	55	Milburn	290	0	0
23	Brown & Phillips	34	0	0	56	Good, L.	1	10	0
24	Carnegie	1	5	0	57	Bodkin, Prof.	1,150	0	0
25	Storran Gallery	5	10	0	58	Rubin	28	0	0
26	Brown & Phillips	9	0	0	59	Catmur	38	0	0
27	Good, L.	9	0	0	60	Caple	28	0	0
28	Bodkin	6	0	0	61	Wallace	50	0	0
29	Lessore	7	10	0	62	Bagge	9	0	0
30	Rickards	2	10	0	63	Morris, C.	11	0	0
31	Sedgwick, Mrs.	47	0	0					
32	Rickards	2	10	0					
					Total of Sale ..	£2,209	5	0	

THE METROPOLITAN
MUSEUM OF ART

Thomas J. Watson Library

