

# SOTHEBY'S

## *Preview*

N  
8640  
S63  
S67a  
October  
1998  
PER



OCTOBER 1998





*Ionica Model  
available in  
platinum 950,  
18ct. yellow  
or pink gold*

**PARMIGIANI  
FLEURIER**

**Célébrer le Temps.**

Parmigiani Mesure et Art du Temps SA  
Manufacture Rue de l'Hôpital 33 CH 2114 Fleurier  
T +41 32 862 66 30 F +41 32 862 66 31  
Catalogues and price list on request



# Contents

## Front cover:

Emerald bead, sapphire and diamond necklace. Jewels from the Estate of Betsey Cushing Whitney. Estimate: \$100,000–150,000 (£60,000–90,000).

See pages 34–35

## Below:

A prince and his mistress in a palace bed-chamber at night, Kangra, *circa* 1820–40, gouache with gold on paper, framed, 43.7 by 29.4 cm. (17¼ by 11⅞ in.).

Estimate: £2,000–3,000 (\$3,500–5,000).

Enquiries: 0171 293 5332

5  
View from Sotheby's

6  
People at Sotheby's

10  
The Wine Column

12  
Sotheby's News

18  
Milanese Art at the Palazzo Broggi  
Giuseppe Ceccatelli heralds the arrival of a major exhibition at Sotheby's Milan

20  
The Davis Collection  
George Plumptre introduces an exhibition at South Africa's National Gallery, sponsored by Sotheby's

22  
The Ties That Bind  
Alexandra Murphy examines the power of Jean-François Millet's painting *La Charité*

24  
On Stage  
Pierre Cardin's Collection of designs by Fernand Léger reveal a little-known aspect of the artist's work, as Oliver Barker shows

26  
Expressionist Films  
Miles Barton explores the influence of modern art on early German silent films

28  
Double Exposure  
Father and son, Edward and Brett Weston both photographed the same woman; Denise Bethel compares their work

30  
A Russian Apocalypse Rediscovered  
Kenneth Archer discusses Nicholas Roerich's *Treasure of the Angels*

34  
Jewels From the Estate of Betsey Cushing Whitney  
John Block introduces one of the most impressive jewellery collections ever to be sold at auction

36  
Society's Belle  
Glamorous and a champion of issues she believed in, Dorothy Hirshon is remembered by James Niven

38  
Savannah Style  
Ronald Varney reviews the range of items included in the Koger Collection

40  
An American Eye for Europe's Cultural History  
The silver collected by Francis Fowler III spans centuries, styles, patrons and artists, as Kevin Tierney explains

42  
"What visions have I seen"  
Renée du Pont Harrison describes a collection of Victorian paintings with Shakespearean themes

44  
A Hidden Art:  
The Work of John Napper  
A personal account of the artist's life and work by Sir Julian Critchley

46  
In Living Colour  
Natural history was Stanley Smith's passion, as Emma Lawson discovers

48  
A Passion for Wine  
Serena Sutcliffe introduces highlights from The Girardet Collection

50  
A Brush with Genius  
David Bennett anticipates a retrospective of Daniel Brush's beautiful creations

52  
Islamic Week at Sotheby's London

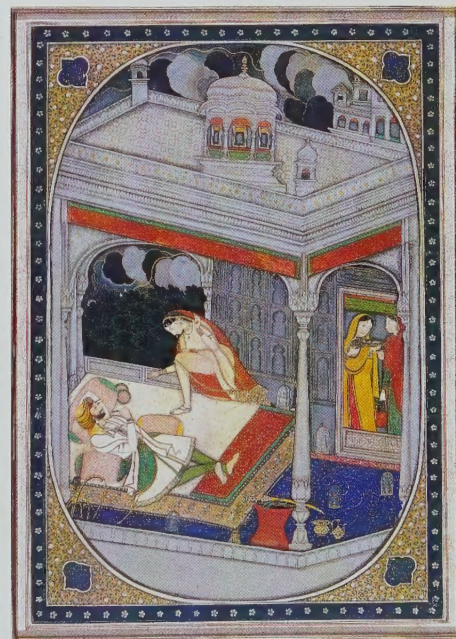
61  
Asia Week at Sotheby's New York

72  
Sales by Category

119  
Sotheby's International Realty

122  
Auction Calendar and Highlights

128  
Principal Offices Worldwide



SOTHEBY'S PREVIEW 34–35 New Bond Street, London W1A 2AA. Telephone: 0171 293 5000

Editor-in-Chief Emma Lawson Art Director Liz Thorp Associate Editor Renée du Pont Harrison Editorial Assistants Malcolm Cossons, Margaret Pugliese, Kate Ebsworth Designer Alexandra Drewitt Advertising Johanna Farrar (0171 629 3771), US: Bob Berg (609 397 8297) see p.128

Publisher L.P.H. Rittner Senior Director, European Marketing © Sotheby's Inc. 1998 William F. Ruprecht, Principal Auctioneer No. 0794917







WHO IS BEHIND  
AN AUDEMARS PIGUET WATCH?

AP  
AUDEMARS PIGUET  
*Le maître de l'horlogerie depuis 1875*



Millenary Collection







# View from Sotheby's

---



Above  
Diana D. Brooks  
President and Chief Executive Officer

## Illustration Opposite

Ramphastos Culmenatus (Culmenated Toucan), from John Gould, *A Monograph on the Ramphastidae, or Family of Toucans*, 1833–54. From the Stanley Smith Collection of Natural History Books, see pages 46–47

As many of you have already witnessed first-hand, the reconstruction of Sotheby's York Avenue location in New York is currently under way. Amidst the excitement that will ultimately result in a state-of-the-art auction facility for our clients is a packed schedule of sales that opens Sotheby's autumn season.

Undoubtedly, the highlight of these sales will be the auction of Jewels from the Estate of Betsey Cushing Whitney, the wife of John Hay Whitney. A philanthropist in a wide variety of fields, Betsey Cushing's life represented a rare standard of excellence as demonstrated through her dedication to numerous institutions, including The National Gallery, The Museum of Modern Art, North Shore University Hospital, New York Hospital and the Yale Medical School and Yale University Art Gallery. A romantic and personal collection, the offering of jewels from her estate, given to her by her late husband, reflects an exquisite taste that was often well ahead of its time. Fittingly, we have dedicated the cover of *Preview* to her exquisite emerald bead, sapphire and diamond necklace, one of many extraordinary pieces in her collection.

In addition, the autumn schedule includes three impressive single-owner sales. In September, fine art, French furniture and decorations, Continental porcelain and jewellery will be offered from the estate of Dorothy Hirshon. Like Mrs Whitney, Dorothy Hirshon was known for her generous contributions to institutions such as the Neighborhood Children's Center, The New York City Human Rights Commission, Carnegie Hall and Phoenix House, to name but a few. The following month, exceptional silver, including several pieces by Paul de Lamerie, will be offered from the Collection of Francis Fowler III and, later that month, we will begin offering the Ira and Nancy Koger Collection of furniture, silver, ceramics, rugs, prints and fine art.

And last, but not least, Sotheby's New York Asia Week will take place in September. This follows in the footsteps of the record-breaking Asia Week in March 1998 during which the highest sale totals in auction history were realized.

We look forward to seeing everyone over the upcoming months and would like to thank you in advance for your patience during the initial reconstruction phase of Sotheby's New York auction rooms.

DIANA D. BROOKS  
President and Chief Executive Officer

---

## Board of Directors, Sotheby's Holdings, Inc.

A. Alfred Taubman (Chairman), Max M. Fisher (Vice Chairman), The Marquess of Hartington (Deputy Chairman), Diana D. Brooks (President and Chief Executive Officer), The Hon. Conrad M. Black, The Viscount Blakenham, Ambassador Walter J. P. Curley, Henry R. Kravis, Jeffrey H. Miro, Sharon Percy Rockefeller

## Advisory Board, Sotheby's Holdings, Inc.

Giovanni Agnelli, Her Royal Highness The Infanta Pilar de Borbón, Duchess of Badajoz, Ann Getty, Alexis Gregory, Sir Q. W. Lee, John L. Marion, The Hon. Sir Angus Ogilvy, Carroll Petrie, Mrs Charles H. Price II, Professor Dr Werner Schmalenbach, Baron Hans Heinrich Thyssen-Bornemisza de Kaszon



# People at Sotheby's



1. Jeff and Eileen Nathan admiring Warhol's *Orange Marilyn*

2. Left to right: Micheline Connery, Stephane Cosman-Connery, Senior Vice President of Impressionist and Modern Paintings, and Sean Connery



Sotheby's Los Angeles showed highlights of many of the East Coast sales on 24th March. The auctions took place in the first two weeks of May in New York.

Wendy Vanderbilt, a descendent of William K. Vanderbilt, together with Barbara Cates and Nancy Harrison of Sotheby's view Alfred Stevens' *Le salon du peintre* at the Belle Époque Paintings reception in New York on 4th May.



On 5th March 1998 Henry Wyndham, Chairman of Sotheby's Europe, Lord Hartington, Deputy Chairman of Sotheby's, and Hubert d'Ursel, Director of Sotheby's Brussels, hosted a lunch in the Hotel Solvay in Brussels to celebrate the 100th anniversary of René Magritte's birth.

1. Cornelius Broere and Henry Wyndham
2. From left to right: Oscar Mairlot, Claire De Pauw, Madame Oscar Mairlot and La Baronne Paul Jannssen
3. Monique Bréhier, Director of Impressionist, Modern and Contemporary Art, Sotheby's Brussels and Charly Herscovici



- 1 Cäsar Menz, Director of the Musée d'Art et d'Histoire, Geneva and José Blanco
- 2 José Blanco and David Bennett, Chairman of Sotheby's Switzerland

Sotheby's Geneva hosted one of its regular *Le lundi chez Sotheby's* events, this time on the subject of *Calouste Gulbenkian: Portrait of an Art Collector*. The guest speaker was José Blanco, Director of the Calouste Gulbenkian Foundation, Lisbon.

All photos © Photac/ Creutzer, Brussels



On 15th April 1998 Sotheby's Israel hosted a dinner in honour of the contemporary artist Frank Stella.

*Right:* Frank Stella and Rivka Saker, Managing Director of Sotheby's Israel



On 16th June Citibank held a dinner in Sotheby's Bond Street galleries to preview the Indian and South Asian Paintings sales that took place the following day. Guests enjoyed a fashion show where the costumes and models were kindly supplied by Libas Collection of Mayfair. The models also wore a selection of pieces from Sotheby's summer sales of Important and Belle Époque jewellery.



1. Jeremy Nestel of Citibank Private Bank and Savita Apte of Sotheby's

2. Sehyr Saigol, the designer of the Libas Collection (right) with her daughter Sabene

3. A model from the Libas Collection



Sotheby's France organized a charity sale of Modern and Contemporary art in aid of the Claude Pompidou Foundation on 26th May. The event raised a total of FF7,500,000 (£750,000; \$1,250,000) and a reception was held at the Galerie Charpentier, the Paris office of Sotheby's in France.

1. Madame Georges Pompidou and Princesse de Beauvau Craon, Chairman of Sotheby's France and Deputy Chairman of Sotheby's Europe

2. *Left to right:* Maitre Cornette de Saint Cyr, Madame Georges Pompidou and Madame Florence de Botton of Sotheby's



Sotheby's New York played host to an exhibition of works of art from the collections of alumni from the Ethel Walker School in Simsbury, Connecticut. This independent boarding school for girls has a strong tradition of supporting education in the arts. Some 50 works were shown, ranging from Old Masters to contemporary pieces.



Twenty-two watercolours and sketches by artist and architect Sergio Lerman, depicting some of the historical buildings on Rothschild Boulevard, went on display at Sotheby's Tel Aviv in June.

*Left to right:* Roni Milo, Mayor of Tel Aviv, Sergio Lerman and Rivka Saker, Managing Director of Sotheby's Israel



1. Kate Crichton Gubelmann and Mary Tullis Kinnear

2. *Left to right:* Members of the Benefit Organizing Committee



# People at Sotheby's

On 1st July Sotheby's London hosted a dinner to coincide with its sale of Contemporary Art. The function was held in the galleries in Bond Street with many of the pieces from the sale on view.

1. Xavier Hufkens, Alain Freulich and Pierre Huber
2. Keith Coventry, Jay Jopling and Gavin Turk
3. Isabelle de Waverin and Jérôme de Noirmont
4. Elena Geuna, head of Contemporary Art, Sotheby's Europe, Eden Endfield and Brad Lochore
5. Nicholas Logsdail and Howard Karshan



Sotheby's New York hosted a reception as part of this year's celebrations for the 50th anniversary of the Foundation of the State of Israel. This was held in conjunction with a symposium entitled "Art in Israel".



1. Left to right: Gideon Ofrat, author of *One Hundred Years of Israeli Art*; Jennifer Roth; Eitan Ben Tsur, Director General, Ministry of Foreign Affairs, Israel; Richard Oldenburg, Chairman of Sotheby's North America; Rivka Saker and Rafi Gamzou, Consul for Cultural Affairs



2. Left to right: Dr and Mrs Michael Salcman; Ambassador Shmuel Sisso; Renee Schreiber of the Consulate General and Rafi Gamzou



The Basel Art Fair was the occasion for a party hosted by Sotheby's Switzerland and the International Contemporary Art department. The party was held on 10th June 1998 at the residence of Ruedi and Anna Maria Staechelin.

1. Guests at the event
2. Helmut Newton
3. Ruedi Staechelin of Sotheby's Basel





*There is only One.*



*A spectacular  
109.24 carat platinum  
& diamond set necklace,  
created by  
Jeremy Morris.*

**DAVID MORRIS**

180 New Bond Street, London W1. Telephone 0171 499 2200



# The Wine Column

## Discoveries

One of the questions I am most frequently asked is whether I ever become tired of wine. I can understand that a lifetime of tasting (even drinking!) wine might seem boring to some but, in reality, trying any wine is always an adventure. It is a constantly changing mosaic and no two bottles are ever quite alike. As wines age, there is bottle variation and there is certainly human variation as our moods alter and we view wines differently according to time, place, food and the company sharing the bottle!

We are also constantly discovering wines we have not seen before. There is a new vintage every year and new producers keep appearing in an ever-widening choice of countries and regions. Even the most experienced taster and stalwart of the wine trade (the two may not be synonymous!) can never say that he, or she, knows it all. Ultimately, we should be grateful for this, as life is thus rendered more stimulating.

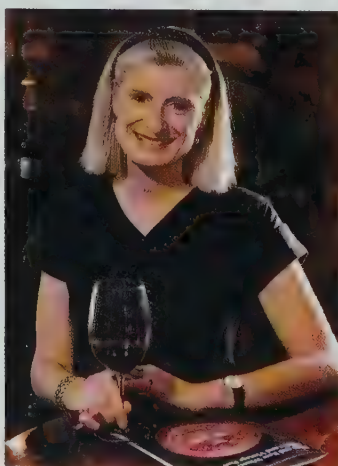
Over the years, for instance, in Northern Spain and Portugal, I had experienced somewhat thin, acid wines made from the Albariño grape. However, quite suddenly, Galicia's Rias Baixas Denominacion de Origen is producing quite delicious Albariño, with a winning formula of bouquet and palate appeal that is wow-ing everyone. My favourite is Albariño Valdamor – the recently released 1997 has a glorious bouquet of peaches and apricots and delivers a mouthful of luscious, opulent clementine fruit.

There is also the white Vermentino grape, which gives real, lemony freshness and seems to be at its best in Sardinia. Certainly, I love the Argiolas Vermentino and it has proved wildly popular at Sotheby's Café.

Then, on a recent weekend visit to the Dordogne, we eschewed all "classic" wines from neighbouring Bordeaux and decided to go native which, in this region, means drinking Bergerac, Pécharmant and sweet white Monbazillac – the latter goes down a treat with foie gras. Top wine turned out to be Château Tour des Gendres 1996, Cuvée à la Gloire de mon Père, a red Bergerac of beguiling fruit and charm and a real "find". The thirst-quenching rosé was also a resounding vote winner and neither are on my usual flight path.

So, make discovering new wines a fixture for your spare time. Not all of them will be winners, but some will surprise you by their presumption!

SERENA SUTCLIFFE, MW



## People at Sotheby's



Sotheby's was given the chance to celebrate the prompt actions of the crew of a British Airways flight who diverted their plane and administered first aid when passenger Janet Gough of Sotheby's was taken critically ill. They were invited to lunch in the Bond Street Galleries in London during March.

*Left to right:* Denis Oldis, Head of Cabin Crew; Sandy Ewington, Purser; Janet Gough of Sotheby's; Dr John Pasi of the Royal Free Hospital, London; Captain Ulick Palmer



The Friends of the Israel Philharmonic Orchestra Foundation were invited to a Bavarian Breakfast on 7th June by Sotheby's Munich. A weekend of events was arranged, including two concerts and a gala dinner at Nymphenburg Palace, Munich which was hosted by HRH The Duke of Bavaria. Their Serene Highnesses The Prince and Princess zu Oettingen-Spielberg received guests for a concert and dinner at Schloss Oettingen, Bavaria.

1 Thomas Greinwald and HRH Princess Eugen of Bavaria

2 Graf von Spreiti of Sotheby's Germany (right) with Oded Gera, President of the Israel Philharmonic Orchestra Foundation

3 Peter Batkin, Dame Shirley Porter, Mrs R. Zimmermann John Porter and Nina Buhne, Sotheby's Frankfurt







1. The theme of this year's Summer Party was *Painting at Sotheby's*
2. HRH Princess Margaret and Linda Howard

On 25th June Sotheby's London threw its annual Summer Party. The galleries were strikingly decorated for the occasion and hung with a selection of works from sales that took place in the following weeks.



3. Henry Wyndham, Chairman of Sotheby's Europe and the Earl of Chichester
4. Colleen Graffy and Sir Robin Day
5. James and Selina Tollemache
6. Sherry Phillips and Irma Buchanan-Jardine

A reception for Sotheby's fourth Irish Sale took place in London on 19th May. An auction and raffle to aid the John Crown Breast Cancer Research Trust were also held, raising over £0.5 million. Among the items sold were a pair of Dame Edna Everage's glasses, as modelled below.



A group of ceramicists whose work featured in the 20th-century International and Israeli Studio Ceramics sale at Sotheby's Tel Aviv.

1. The charity auction in progress
2. Lady Charles Spencer-Churchill and Phillip Martyn
3. Viscount and Viscountess Linley
4. Elizabeth Hurley and Hugo Swire of Sotheby's



Left to right: Takeshi Yasuda, Rupert Spira and Gabrielle Koch with Rivka Saker, Managing Director of Sotheby's Israel, and Joram Rosenheimer, Sotheby's ceramics consultant



# Sotheby's News

## "A Century of Style" in Geneva

A special sale to celebrate a century of the most stylish jewellery will be one of the highlights of the autumn auction calendar.

The sale, to be held at Sotheby's Geneva in November, will concentrate on all that is best in 20th-century European jewellery. Beginning with the jewels of the Belle Époque and the delicate creations of the Garland Style, these will be followed by geometrical, exotic Art Deco ornaments and opulent creations of the 1930s.

The post-war years will be represented with gold jewels of the late 1940s and cascades of diamonds from the 1950s. Jewels of the 1960s are noted for their stylized forms, while designers in the 1970s favoured traditional as well as more exotic designs; gem-set creations are a feature of the 1980s. The last decade of the 20th century has produced dramatic jewels suited to contemporary fashion.

Pieces by Boucheron, Bulgari, Cartier, Van Cleef & Arpels and many others will show the evolution of jewellery design as it kept pace with the changes in social life, artistic climate and fashion.

From tiaras to corsage ornaments, from necklaces to brooches, all forms of jewels will be analyzed in a lavish and meticulously researched catalogue, which is likely to become a reference book for future generations. The closing date for consignments to this and the Magnificent Jewels sale, also to be held in the same week in Geneva, is early September.

Enquiries: Alexandra Rhodes  
(London) 0171 293 5311 or  
David Bennett (Geneva)  
41 22 908 4849

Right: a gold, carved emerald, sapphire, ruby and diamond flowerhead brooch with earrings *en suite*, by Chaumet, c. 1935. Estimate: £20,000–30,000

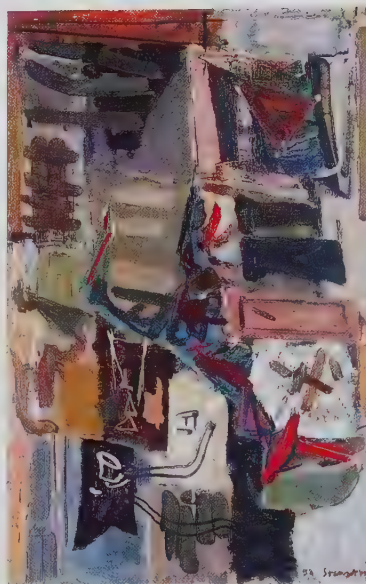


## Chichester Open Art Exhibition

Sotheby's is the principal sponsor of the Chichester Open Art Exhibition under the Presidency of the Duke of Richmond. Now in its third year, the exhibition will be on view, free of charge, from 31st October to 14th November at the Grade I-listed John Edes House in Chichester, West Sussex.

A total of £6,000 in prize money is to be awarded, including £1,000 for the best work by an artist under the age of 26. All artists may submit works, which will be offered for sale. Pictures can be entered at Sotheby's offices in Chester, Cheltenham and Sussex, and the final entry date is 15th October at Sotheby's Sussex saleroom.

Enquiries: Eva McCullough 01798 831 272 (9am to 5pm weekdays)



from around the globe, proved so successful in 1998 that the concept has been expanded and the next sale will be held at Sotheby's Tel Aviv and Sotheby's Chicago.

Over 750 applications by artists from 10 countries and 23 art schools are now being reviewed by a panel of art professionals for inclusion in the sale. Ultimately, 240 works are to be sold in Tel Aviv on 21st January and in Chicago on 28th January 1999.

Enquiries: Sotheby's Tel Aviv 972 3 560 1666

Above: Avigdor Stematsky, *The Pipe*, signed and dated 1958, oil on canvas, 92 by 58.5 cm. (36¼ by 23 in.). Estimate: \$30,000–40,000. To be sold in Tel Aviv on 8th October.

## Events in Tel Aviv

While Sotheby's in Israel offers a wide selection of paintings by leading Israeli artists in October (see page 87), plans are also taking shape for the second sale of International Young Art. In keeping with its increased activities following its move to landmark premises in the city's financial district, Sotheby's Israel has added the Young Art sale to its schedule of auctions.

This event, which brings to auction works by young, unknown artists

## The China Circle: A Three-day Seminar

Sotheby's Institute in London is offering an exceptional global view of the Export trade in Chinese porcelain in a London seminar, 11th to 13th November, entitled "The China Circle – the Export of Chinese Porcelain Round the World".

For the first time, an international group of scholars will each lecture on the trade with their own country, analyzing in depth the differences between these trades over the last four centuries.

Taking part are Professor Liu Xinyuan of Jingdezhen; Professor John Carswell who will speak on the Middle East trade; Dr Oliver Impey of the Ashmolean on the trade with Japan; Professor Christian Jörg on the Dutch trade; Chantal Kozyreff of the Chinese Pavilion, Brussels, on the Ostend Company; Monique Crick on the French trade; David Howard on the British and Kee Il Choi on the American trade; while Kristian Jakobsen will cover Denmark; Kristina Söderpalm, Sweden; Drs Pinto de Matos, Portugal; Antonio Diez de Rivera, Spain; and, it is hoped, a German speaker. Enquiries: Sotheby's Institute 0171 462 3232; fax: 0171 580 8160

ASIAN ART  
IN LONDON



# SOLEIL genève

*Feel*  
the secret glow.





# Sotheby's News

## Benefit Lecture: Jewels of the Rich and Famous

Nicholas Rayner, previously Chairman of Sotheby's Geneva and head of jewellery sales, had a severe stroke four years ago. During his recovery he has organized lecture evenings to benefit The Stroke Association and, to date, has raised more than £30,000.

His lectures include a wealth of fascinating stories about important gems and their owners, Maharajahs, film stars, Heads of State and billionaires. Yet the tale he most enjoys recounting is his sale of a rare pink diamond found quite by chance by a penniless young man in a street of Rome, which realized more than any winning lottery ticket.

Nicholas Rayner's forthcoming benefit lecture will take place at Sotheby's London at 6pm on Tuesday 6th October. Tickets (including drinks) are priced at £33 each and can be purchased from the Wilma Leroy Stroke Association, 39 St Peter's Grove, London W6 9AY, telephone: 0181 741 8729.

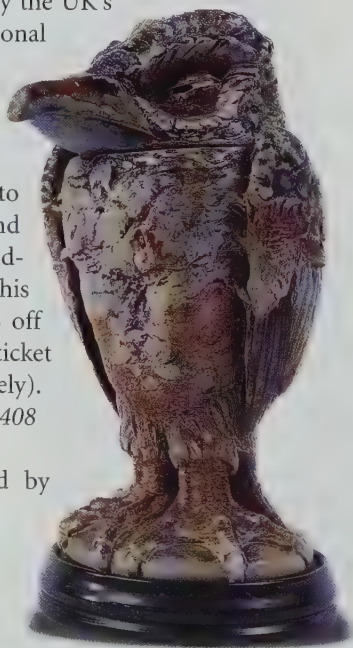
## Award for London Car Department

Sotheby's London Car department won the prestigious 1998 *Classic Cars* Award for "Auction House of the Year". The award was presented by The Rt Hon Alan Clark MP at the Goodwood Festival of Speed dinner on 13th June. It was voted for by readership and was also based on prices achieved at auction during 1997.

## Preview Readers' Offer

Sotheby's are pleased to announce a special offer for readers of *Preview* to visit the LAPADA show at the Royal College of Art, Kensington Gore, London SW7, which takes place between 13th and 18th October. Organized by the UK's largest association of professional art and antiques dealers, the show contains exhibits from more than 65 leading dealers. Everything from furniture, paintings, silver and textiles to antiquities, Masonic items and barometers will be for sale. Readers of *Preview* who produce this October issue will receive 50% off the price of a single or double ticket (usual price £8 or £14 respectively). Further information: 01223 830 408

Right: saltglaze stoneware bird by the Martin brothers



## Decorative Arts in Australia

Sotheby's Melbourne decorative arts sale on 9th November will feature the collection of Mr and Mrs Ivor Trescowthick. Highlights include a pair of satinwood demi-lune cardtables, circa 1790 (estimate: A\$15,000–20,000), an 18th-century Chippendale style mirror (estimate: A\$20,000–30,000, left) and a pair of George III silver entrée

dishes dated 1805 by Thomas Robins, with silver plate stands (estimate: A\$3,500–5,500). As with the majority of the collection, these items were purchased during tours of Europe and, consequently, are fresh to the Australian market.

From other properties come European furniture and works of art, such as a 16th-century parcel-gilt carving of St Lazarus from the Rhine region of Germany, circa 1550 (estimate: A\$25,000–35,000) and a Spanish walnut stretcher table, circa 1680 (estimate: A\$12,000–18,000).

Consignments are invited until the end of August. The auction will be on view from Friday 6th to Sunday 8th November.

Enquiries: Sotheby's Melbourne 61 3 9509 2900

## A Summer of Record Results

Summer at Sotheby's was notable for the number of record-breaking results achieved across the collecting fields. From Reynolds' *Lady Williams Wynn with her Children* (£1.4 million; \$2.2 million) to Monet's *Bassin aux nymphéas et sentier au bord de l'eau* (£19.8 million; \$33.1 million); from Alfred Stevens' *Le salon du peintre* (\$1.6 million; £1 million) to Warhol's *Orange Marilyn* (£17.3 million; \$10.6 million), works of extraordinary quality in the fine art categories established many new artist records.

Provenance played its part in securing high prices. The Thyssen Meissonnier Tureen, originally commissioned by the Duke of Kingston in 1733, sold for \$5.7 million (£3.5 million) in May. The following month witnessed the Livinec-Valladier Commodes made for Prince Marcantonio IV Borghese achieve £1.1 million (\$1.8 million). Whilst the Warwick Tables, which bear the cypher of Queen Anne, brought £1.7 million (\$2.7 million).

Recent discoveries also proved irresistible. A letter from Beatrix Potter in which she first introduces Jeremy Fisher was rescued from a rubbish bin and sold for £144,500 (\$239,870). The Burdett Psalter, dating from the 13th century yet previously unrecorded, set a world auction record for any French manuscript selling for £2.8 million (\$4.6 million).



# *The Carlyle*

NEW YORK



A MOBIL FIVE-STAR HOTEL  
FOR OVER A  
QUARTER OF A CENTURY

212 744 1600



# Sotheby's News

## Rare Venetian Glass Discovery

Two previously unrecorded 15th-century Venetian glass goblets have been discovered by Sotheby's experts in a house in West Wales. Found while cataloguing the contents of Derwydd (see page 115), the goblets have been in the family's possession from as early as 1900. Due to their importance, they will be included in the British and Continental Glass sale in London on 15th December, bearing estimates of £50,000–70,000 each. The last goblet of similar type to be sold at auction in London achieved £55,000 in 1978.

Such luxury items were generally made to order for a special purpose, like a marriage present or liturgical vessel. Intended as works of art, they stand out as superior aesthetically to the general level of craftwork of the time. These refined examples appear to have been inspired by enamelled metalwork.

*Enquiries:*

*Simon Cottle*

*0171 293 5133*



## New Director for Mexico City Office

Ana Yturbe de Sepulveda has become the new director of Sotheby's Mexico City office. Ana joins the company after a long career in the arts and the diplomatic world, having worked for the Galeria de Arte Mexicano, as well as accompanying her husband as ambassador to Washington, DC and the Court of St. James's.

## Relaunch of Sotheby's Website

Since June 1998 Sotheby's clients have had access to a redesigned version of the company's website. Now significantly larger, the site contains a variety of new features including articles on specific sales, items on general subjects under the section Collector's Eye and detailed calendar information on Sotheby's sales worldwide. The most significant development is the presence on the site of Sotheby's auction catalogues for all major sales locations; it is possible to leaf through the text on-line and search for items by subject, keywords and lot numbers. Sotheby's is the first international auction house in the world to provide this facility.

Sotheby's has linked key words in the articles to other pertinent websites in order to facilitate accessing related information. Sotheby's bookshop publications can be purchased and sales catalogue subscriptions can be taken up or renewed, with payment made with security on the site. Information is also available on other services offered by the company, such as the Institute, Realty, Restoration and Financial Services.

*Sotheby's website address: [www.sothebys.com](http://www.sothebys.com)*



## Appointments at Sotheby's Germany

Heinrich Graf von Spreti (above right), currently Managing Director of Sotheby's Germany, has been appointed President of Sotheby's Germany, with Dr Philipp Herzog von Württemberg (above left) taking over as Managing Director.

Dr Philipp Herzog von Württemberg was educated at the Eberhard-Karls-University in Tübingen, from where he graduated in 1993, obtaining his PhD in History of Art in 1997. He joined Sotheby's in 1996 as a specialist in the Continental Furniture department in London. A trained auctioneer, he will be based in Sotheby's Frankfurt office from Spring 1999.

Graf von Spreti joined Sotheby's in London 20 years ago as a specialist in gold boxes, objects of vertu and Fabergé and became Managing Director of Sotheby's Germany in January 1996. He was closely involved in the Regensburg and Baden-Baden sales, both of which set record totals for European house sales. Graf von Spreti will play an important representative role for the company in addition to his responsibilities as head of the Munich office and specialist in his field.



*Above: Harry Hall, Lord Poulett's Celebrated Racehorse 'The Lamb' with George Ede Up at Newmarket, 1871, oil on canvas. Estimate: £20,000–30,000*

## The Racing Sale

Sotheby's third Racing Sale will take place on Wednesday 25th November. Included will be a large selection of memorabilia, as well as racing trophies, sculpture, watercolours, paintings, prints and racing colours, which will be sold on behalf of the British Horseracing Board. The closing date for consignments is Friday 25th September. *Enquiries: Hugo Swire 0171 293 5484*





# WINE ART

Tenute Sella & Mosca S.p.A. | Piani 07041 Alghero (Sassari) Italia  
Tel. 0039 - 79 - 99.77.00 – <http://www.sellaemosca.com>



# Milanese Art at the Palazzo Broggi

**Giuseppe Ceccatelli** heralds the arrival of a major exhibition to be jointly hosted by Sotheby's Milan and FAI, Fondo per l'Ambiente Italiano

From 1st to 6th October Sotheby's Milan will host an exhibition entitled *Cristina Trivulzio Princess of Belgioioso, A Milanese Collection from the Masino Castle*. The objects on display are all outstanding examples of works of art from the city, the core of which come from the collection at the Masino Castle near Turin. What runs through all is their connection to Princess Cristina Trivulzio Belgioioso (1808–71). Born into one of Italy's wealthiest families, Cristina lived an eventful, peripatetic life. At the age of 16 she married playboy Prince Emilio Barbiano di Belgioioso, but the relationship soon ended. Involvement in the Italian Risorgimento led to persecution by the Austrian political police and Cristina fled to Paris, becoming a noted society hostess and acquaintance of Balzac, Liszt, Chopin and George Sand, amongst others. In the 1850s she travelled around Turkey, Syria and Iraq, staying for a year in the harem of the Mufti of Tcherkess. She was one of Italy's first female journalists, and a skilled painter. The princess's daughter married Marchese Lodovico Trotti Bentivoglio and it was through his family that the collection left Milan to become part of the Masino's treasures.

On display will be one of Cristina's watercolours and a portrait of her by Henry Lehmann dated 1844 that has been exhibited at the Louvre in Paris. Highlights also include a magnificent pair of Lombard console tables richly carved with sea monsters, which date from the end of the 17th century and were originally located in the Castle Salone degli Dei, and a tableau by Gian Battista Gigola, with hardstone mounts and portraits of the Trivulzio family.

The exhibition is held in conjunction with FAI, Fondo per l'Ambiente Italiano and will be opened by its chairwoman, Giulia Maria Mozzoni Crespi. A non-profit organization, FAI was established in 1975 following the example of England's National Trust. It numbers over 30,000 members and currently runs 28 estates, which include castles, villas, ancient palaces, monumental gardens and natural parks. The Masino Castle is one of the Italian Historical Buildings that belongs to FAI, and its large art collection is currently in need of restoration. A range of items included in the exhibition have recently been restored through the financial assistance of Sotheby's.

It is Sotheby's pleasure to welcome the return of the princess's collection to Milan, the city that it left 50 years ago.

*Giuseppe Ceccatelli is the managing director of Sotheby's Italy.*

**Exhibition: Cristina Trivulzio Princess of Belgioioso,  
A Milanese Collection from the Masino Castle  
Sotheby's, Palazzo Broggi, Via Broggi 19, Milan  
1st to 6th October  
Enquiries: Sotheby's Milan 39 (02) 295 001**



Above: detail of a console table, Lombard, late 17th century, from the Belgioioso Collection



Left: view of the Masino Castle, Piedmont

Below: the Ball Room, Masino Castle







You never  
actually own a Patek Philippe.

You merely look after it for the next  
generation. The new ladies' Travel Time with dual

  
PATEK PHILIPPE  
GENEVE



hour hands. One local time. The other, home. Begin your own tradition.





## The Davis Collection

**George Plumptre** introduces an exhibition at South Africa's National Gallery, sponsored by Sotheby's



The art institutions of South Africa are rich with gifts from men who, during the late 19th and early 20th centuries, made their fortunes from the country's booming mining industries. At the National Gallery in Cape Town one of the less well-known, but most distinguished and interesting of these gifts is the group of works presented by Sir Edmund and Lady Davis. The works have not been on public display for many years and, consequently, are not widely known. Sotheby's are delighted to be assisting in their appearance by sponsoring the catalogue of a major exhibition at the National Gallery that opens in late September 1998 and will run until July 1999.

In addition to the group presented by the Davis's, which is notable for works on paper as well as sculpture and oil paintings, the exhibition will present works in the National Gallery's permanent collection by artists whom the couple originally collected and especially admired. A representative example is one of the gallery's most distinguished paintings, *The Wood Nymph* by Edward Burne-Jones.



*Above left:*  
Edward Burne-Jones,  
*The Wood Nymph*,  
oil on canvas.  
Talbot Bequest on loan  
to the South African  
National Gallery

*Left:* Glyn Philpot,  
*Head of a Man*, black  
chalk on tinted paper.  
Davis Presentation

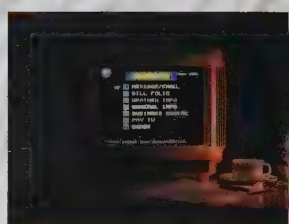
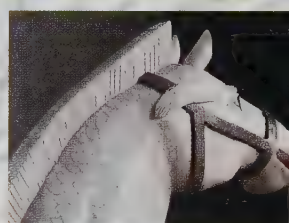
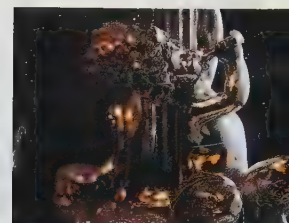
*Below left:* Charles  
Haselwood Shannon,  
*The Toilet*, oil on canvas.  
Davis Presentation

Edmund Davis made a fortune through his acquisition of mineral rights in South Africa during the 1890s and his subsequent establishment of the monopolistic Chrome Company Ltd. With his wife Mary, he began to build up what became a substantial art collection rich in works by contemporary British artists such as Burne-Jones, Millais, Orchardson and Watts. Although some of the artists whose works they collected – such as Charles Ricketts, also their chief adviser on purchases – would fall from rapidly fashion in the face of 20th-century modernism and admiration for the Impressionist movement, at the time, the Davis's collecting was adventurous – and prolific. At its height, the collection contained over 170 oil paintings, some 100 drawings and over 30 sculptures. The gift to the South African National Gallery was made in 1935–36, but when the childless couple died a few years later the bulk of the collection was dispersed at auction.

At a time when the cultural and artistic perspectives of South Africa are diversifying to an exciting degree, it is fascinating to admire a group of works that evoke an earlier period of artistic styles, of impressive private collecting and an example of generous benefaction.

*George Plumptre is director of Sotheby's South Africa.*





THE  
DETAILS  
MAKE  
A  
PENINSULA

THE PENINSULA  
GROUP



Peninsula: Hong Kong • Manila • New York • Beverly Hills • Quail Lodge Resort & Golf Club Carmel • The Palace Hotel Beijing • The Kowloon Hotel Hong Kong

Members of  
*The Leading Hotels of the World*

PREFERRED  
HOTELS OF THE WORLD

UTELL  
INTERNATIONAL

SRS (For Kowloon Hotel)

E-mail: [info@peninsula.com](mailto:info@peninsula.com) Website: [www.peninsula.com](http://www.peninsula.com) or CONTACT YOUR TRAVEL PROFESSIONAL





## The Ties That Bind

The relationship between mother and daughter is portrayed with great sensitivity in Millet's *La Charité*; **Alexandra Murphy** examines the painting's power

Jean-François Millet (1814–75), *La Charité* or *Le vieux mendiant*, signed, oil on panel, 40 by 45.1 cm. (15¾ by 17¾ in.). Property formerly in the Collection of Gladys Moore Vanderbilt. Estimate: \$700,000–1,000,000 (£430,000–615,000)

*La Charité*, one of Jean-François Millet's most affecting scenes of rural customs, will be offered in Sotheby's sale of Important 19th Century European Paintings. In an unusual, asymmetric composition, a young girl and her mother prepare to offer a slab of bread to a beggar waiting discreetly beyond their doorstep. Unlocated for perhaps a century (although the painting's original commission in 1858 is uncommonly well documented), *La Charité* was rediscovered during a recent estate appraisal.

It was painted in 1858–59, during a period when Millet's work was closely focused on subjects taken from the daily routines of his own family and from the lives of peasant wives and children throughout Barbizon. In contrast to the public pronouncements on rural poverty that made his Salon paintings of those years – *The Gleaners* and *Peasant Woman Pasturing Her Cow* – so disturbing to Parisian authorities, *La Charité* was a quiet celebration of the strength of family life and the lessons and virtues quietly passed down from mother to daughter.

To emphasize the mother's gesture and her daughter's shy reticence, Millet constructed an original composition that uses

light and empty space to great dramatic effect. A background window accents the mother–daughter grouping, while a broad block of sunlight across the stone floor emphasizes the distance the hesitant child must cross to address the stranger outside the door. In a most unusual step, Millet has forced the figure of the itinerant beggar into the deeply angled doorway, almost outside the picture frame, quietly underlining the marginality of the impoverished and forcing the viewer actively to search him out in the scene.

*La Charité* is well-recorded in the Millet literature and known to scholars from a late 19th-century photograph; but such a documentary record is hardly an adequate substitute for the actual experience of viewing this remarkable painting.

*Alexandra Murphy is the leading authority on Jean-François Millet and is an advisor on the Barbizon School to Sotheby's 19th Century European Paintings department.*

**Important 19th Century European Paintings, Drawings and Sculpture**  
New York, 10th November

**Enquiries: Benjamin Dollar or Nancy Harrison 212 606 7140**



The sign of excellence in private banking.  
Worldwide.



The name LGT Bank in Liechtenstein is synonymous with prestigious private banking services.

As a leading member of the Liechtenstein Global Trust (LGT), we can offer you both the well-established investment advantages of the Liechtenstein financial centre and all the benefits of a strong global financial services group.

Why not get in touch with us. You'll be surprised how much we can do for you.

LGT Bank in Liechtenstein  
Aktiengesellschaft  
Herrengasse 12, P.O. Box 85  
FL-9490 Vaduz  
Principality of Liechtenstein  
Phone +41 75 235 11 22  
Fax +41 75 235 15 22

Zurich Branch  
Gladbachstrasse 105  
P.O. Box 832  
CH-8044 Zurich  
Phone +41 1 250 81 81  
Fax +41 1 252 51 78



**LGT Bank in Liechtenstein**  
A Member of Liechtenstein Global Trust



# On Stage

Fernand Léger's designs for opera and ballet in Pierre Cardin's Collection reveal a little-known aspect of his work, as **Oliver Barker** explains

Pierre Cardin's collection of theatrical set and costume designs by Fernand Léger numbers around 70 works and provides an insight into this area of the artist's oeuvre. The designs form part of the rich tradition in France in the 20th century of a cross-fertilization between the visual and performing arts, a tradition already enriched by artists such as Braque, de Chirico, Derain, Gris, Matisse and Picasso, who had created designs for Diaghilev's seminal *Ballets Russes* productions.

Part of the collection relates to the ballet *La création du monde*, performed by the



Left:  
Fernand Léger  
(1881–1955),  
*Bolivar Maquette*,  
signed, gouache  
and brush and  
ink over pencil  
on paper, 25 by  
32.5 cm. (9⅞ by  
12¾ in.).  
Estimate:  
£10,000–15,000  
(\$16,500–25,000)

Ballets Suédois at the Théâtre des Champs Elysées in Paris in 1923. Léger's designs, Blaise Cendrars' scenario, Jean Börlin's choreography and Darius Milhaud's music were all inspired by African art, myth and ethnography. It would be, wrote Léger, "the only possible ballet nègre in the entire world", one that would "remain as a model of the genre."

The production mirrored the increased interest in Primitive culture in Europe at this time. Theatre was pivotal to this development – just as Picasso's decor for *Parade* exposed audiences to Cubist ideas, so theatre familiarized them with Primitive culture. Its emphasis on symbols of creation corresponded with the desire for social rebirth following the First World War, and African art, sounds and rhythms all became popular, as did jazz music, introduced to Paris in the 1920s with the influx of American visitors. Léger's beautifully composed designs recall those heady days in their wonderful fusion of colour and decor.

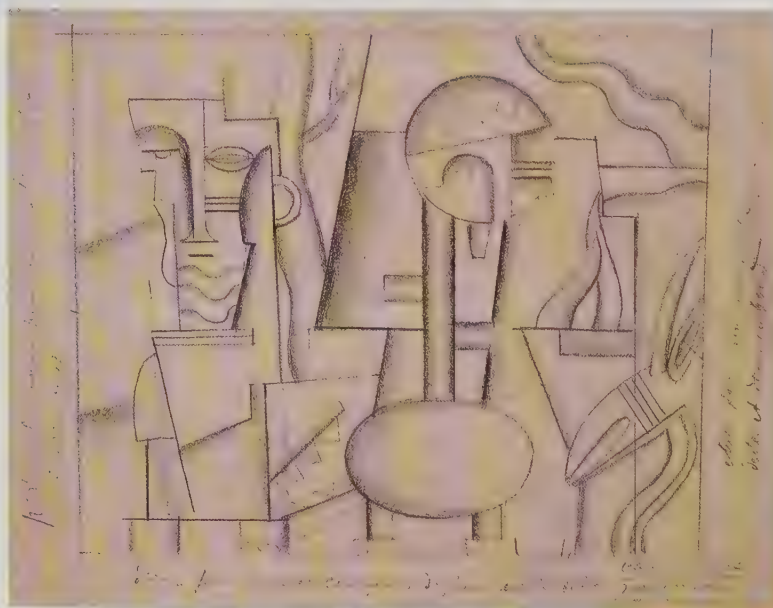
In 1950, 27 years later, Léger undertook his most ambitious commission, that for the three-act opera *Bolivar* which was based on the life of Simon Bolivar, the liberator of the South American States in the War of Independence against Spain in 1821. Léger produced many gouaches and drawings, creating a series of dramatic costumes and sets that are full of movement and liberating modernity, perfectly reflecting the colourful life of this national hero.

The artist's work continues to exert its influence, as Pierre Cardin has said of this collection, "I have always been fascinated by dance and theatre and when I opened the Espace Cardin in Paris, I realized that all my research was in parallel with Fernand Léger's interests. I was attracted by the industrial techniques, the volumes and the geometry. It was very revolutionary and at the same time very simple. This is what I intended to do myself in my designs."



Right: Fernand Léger, *Étude pour "La création du monde"*, pencil on paper, 21 by 27 cm. (8¼ by 10⅝ in.). Estimate: £20,000–30,000 (\$33,000–49,000)

Above: stage model for *La création du monde* in the Dansmuseet, Stockholm



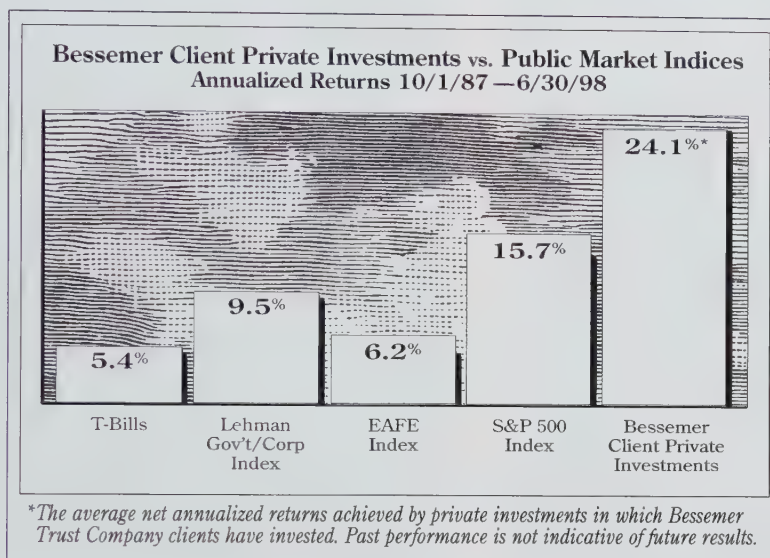
Fernand Léger: Stage Set and Costume Designs from the Collection of Pierre Cardin  
London, 21st October  
Enquiries: Oliver Barker  
0171 293 5392



Oliver Barker is a deputy director in the Impressionist and Modern Art department, Sotheby's London.



# WHY SUBSTANTIAL INVESTORS REQUIRE A COMMITMENT TO PRIVATE INVESTMENTS.



Our 90-year history has taught us that individuals and families with substantial fortunes find it advantageous to have a portion of their assets invested for significant capital appreciation. With the erosion of wealth due to taxes and inflation, we believe private investments in buyouts, venture capital and other private investment opportunities should be a key part of a well-designed, long-term investment program intended to span generations. We believe clients should typically commit 10% to 25% of their assets to private investments.

Bessemer clients' private investments have achieved a **24.1%** net annualized return since October 1987—well ahead of public market indices. The risks associated with private investments may be higher than public market investments.

Private foundations and endowment funds with significant long term funding needs should also consider committing a portion of their assets to private investments.

If you have \$5 million or more to invest and would like to learn more about Bessemer's investment capabilities, including our booklet "Private Investing for Substantial Investors," please write or call Robert C. Elliott at (212) 708-9141.

## Bessemer Trust

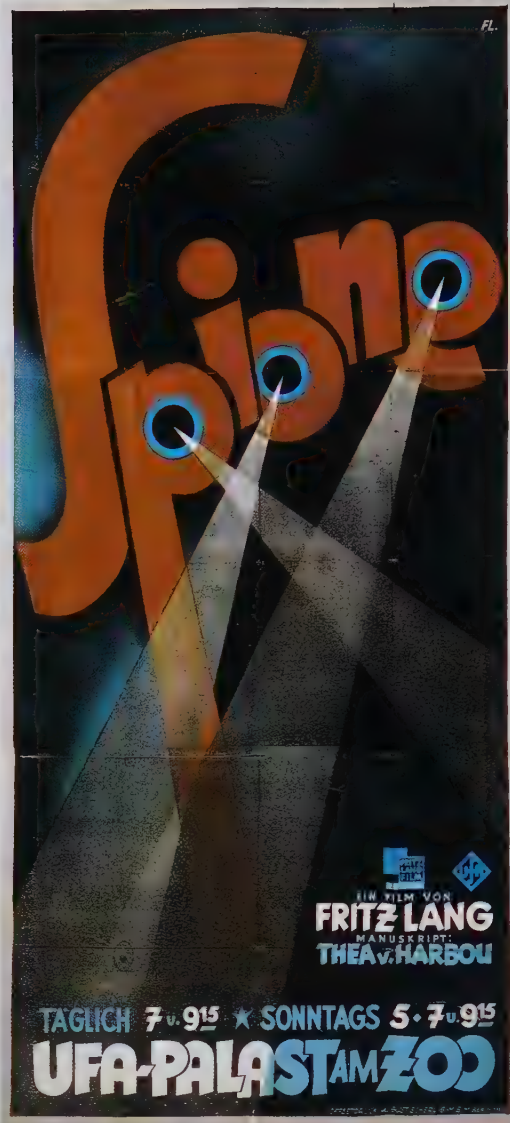
ENHANCING PRIVATE FORTUNES FOR GENERATIONS

New York (212) 708-9141 | Washington, DC (202) 659-3330 | Chicago (312) 220-9898  
Palm Beach (561) 655-4030 | Miami (305) 372-5005 | Naples (941) 435-0034  
Los Angeles (213) 892-0900 | San Francisco (415) 291-1810

630 Fifth Avenue, New York, New York 10111

E-Mail at: [wealth@bessemer.com](mailto:wealth@bessemer.com)





Far left:  
*The Cabinet of Dr Caligari*, 1919, UFA, Austrian, art by Theo Matejko, 127 by 193 cm. (50 by 76 in.). Estimate: £15,000–18,000 (\$25,000–29,000)

Left: *Spione (Spies)*, 1928, UFA, German, art by Max Fleiss, 96 by 212 cm. (38 by 83 in.). Estimate: £20,000–30,000 (\$33,000–50,000)

## Expressionist Films

German silent films were heavily influenced by developments in modern art; **Miles Barton** discusses two examples

“Not for years have I sat in the cinema so rivetted as I was here. The film is something quite new”, so wrote Kurt Tucholsky of *The Cabinet of Dr Caligari* (1919). This was the first and greatest of the Expressionist films produced in Germany during the silent era which clearly translated on to the big screen the haunting visions of artists such as Beckmann, Kirchner and Die Brücke group. Designers Walter Reiman, Walter Rohrig and Herman Warm produced stylized, Expressionist sets with distorted perspectives and seemingly arbitrary angular areas of space. Within this tortuously constructed world exist the murderous characters, menacingly performed by Werner Krauss as Caligari and Conrad Veidt as his servant.

This film is recognized as a cinematic landmark; original posters are highly sought after and exceptionally rare. The Austrian version to be sold on 17th September was designed by Theo Matejko in a style redolent of the great Expressionist masters and is one of the best evocations of the Doctor and the hellish streets he stalks.

Fritz Lang was to have directed *Dr Caligari* but due to prior commitments was unable to oblige producer Erich Pommer. Renowned for his masterpiece *Metropolis*, Lang formed his own company to produce his next film *Spione (Spies)* in 1928, which again returned to the theme of an underworld master criminal who plans to rule the world. Lang’s Expressionist vision is evident in the scenes of Japanese ghosts haunting the envoy who sent them to their death, as well as the disturbing mental images projected by people involved in a tunnel train wreck. This visually arresting film reflected the paranoia about spies that gripped Europe in the years prior to the Second World War. Designed by Max Fleiss, this poster is just one of four known to exist.

The sale of these posters offers a chance to acquire a major piece of film history. As the market for film posters broadens, so the quality and design of these early rare images become increasingly desirable to serious collectors.

**Film Posters and Memorabilia**  
**London, 17th September**  
**Enquiries: Miles Barton**  
**0171 293 5894**



*Miles Barton is a specialist in the Collectibles department, Sotheby’s London.*



# PITCAIRN ON WEALTH MANAGEMENT: THE DESIGN IS INTRICATE, THE PURPOSE IS SIMPLE. TAKING YOU WHERE YOU WANT TO GO.

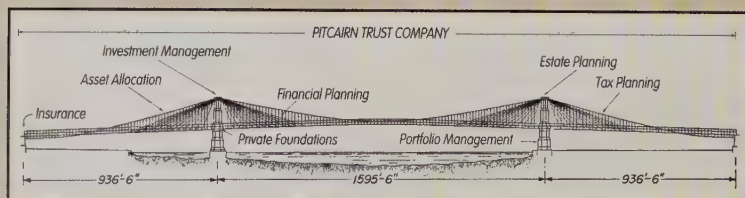
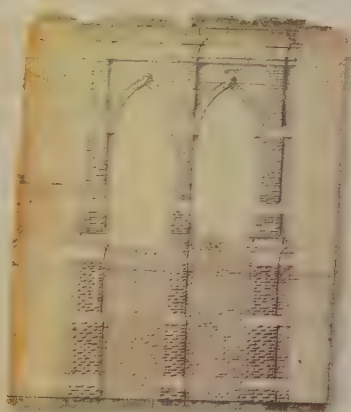


## THE SMARTEST WAY TO GET THERE



The Brooklyn Bridge, an engineering triumph proclaimed as the "Eighth Wonder of the World," was simply constructed to connect the people of Brooklyn to the island of Manhattan. At Pitcairn, we are in the business of connecting each and every client to their financial goals. For 75 years,

we have been engineering integrated and comprehensive Wealth Management Plans on behalf of individuals, families, and institutions. Each plan is custom-built with financial services that take into account your investment objectives, estate planning, insurance needs, and tax profile. Since Pitcairn limits the number of clients served, we are able to execute your plan on a highly personalized and confidential basis.



© 1976 Atlas Editions, Inc.

## THE RIGHT STRATEGY YIELDS THE RIGHT RETURNS

3,515 miles of cable, along with an innovative suspension strategy, made Brooklyn the first bridge passable by pedestrians, trolleys, and carriages. Implementing the right strategy at the right time has put Pitcairn at the forefront of the investment field. Over the last year, Pitcairn has yielded higher after-tax returns than the S&P 500, Russell Mid Cap, Russell 2000, Wilshire 5000 and Lehman Municipal Bond indices.



## STEERING YOU TO YOUR DESTINATION



With a rooster in her lap as a symbol of victory, Emily Roebling was the first to ride over the completed bridge. At Pitcairn, we understand that when you lose focus of your goals, you never cross your bridge. Pitcairn minimizes this risk with periodic meetings to review your financial status and discuss any changes in your goals and needs. Now, granted, a rooster is a nice symbol of victory... but isn't the luxury of doing what you want, when you want, a better one?



**PITCAIRN TRUST COMPANY**  
BUILDING ADVANCED SOLUTIONS FOR WEALTH MANAGEMENT

1 - 800 - 211 - 1745

[www.pitcairn.com](http://www.pitcairn.com)



# Double Exposure

Father and son, Edward and Brett Weston both photographed Christel Gang; **Denise Bethel** compares their work

Sotheby's photographs sale in October will feature two fascinating portraits of the same woman, Christel Gang, taken only two years apart, by different photographers. In the history of visual arts, such comparisons have always been interesting: how two artists, working with the same model, present both the obvious and subtle aspects of their subject's physical visage and character. Here, however, a further ingredient is added to the mix: the artists in question are father and son, Edward and Brett Weston.

Christel Gang met Edward Weston in 1925, and they quickly became lovers. Weston returned to Mexico shortly thereafter, but when he moved back to California at the end of 1926, they resumed their physical relationship. Edward Weston's 1927 photograph of Gang is stunning: intimate and sensual, yet at the same time describing the delicate curves of shoulders, wrists and elbows with a sculptor's precision. It is a mesmerizing and complex picture that resists categorization: is it a portrait or a nude study? Weston's lover of the 1920s, or an archetypal woman of the ages?

The portrait by Brett Weston, however, taken only two years later, shows Gang as filled with character, personable, perhaps a little feisty. Although Gang's physical relationship with Edward had ended by 1929, she remained his loyal friend for decades. In Brett's portrait we get a glimpse of the woman who would write letters faithfully, purchase photographs from the Westons, send gifts – including the occasional cheque when times



were hard – and even try her hand at painting. It is a candid and refreshing portrait of a busy woman, taken when the precocious Brett was only 18 years old. This photograph, along with other early Brett Westons in the Sotheby's auction, should prompt a re-evaluation of his very distinct talents, long overshadowed by his father's formidable reputation.

The two photographs were originally gifts from Christel Gang to the family of the late Seymour Stern, a filmmaker and critic.

## Photographs

New York, 7th October

Enquiries: Denise Bethel 212 606 7240



*Above: Brett Weston, Christel Gang, gelatin silver print, 1929, 24.1 by 17.8 cm. (9½ by 7 in.), mounted, signed and dated by the photographer in pencil on the mount. © The Brett Weston Archive from the Christian Keesee Collection.*

Estimate: \$5,000–8,000 (£3,000–5,000)

*Left: Edward Weston, Christel Gang, gelatin silver print, 1927, 18.4 by 23.2 cm. (7¼ by 9½ in.), mounted, signed and dated by the photographer in pencil on the mount. © 1981 Arizona Board of Regents, Center for Creative Photography. Estimate: \$70,000–100,000 (£40,000–60,000)*



*Denise Bethel is director of the Photographs department, Sotheby's New York*



# gérald genta genève



The Tourbillon  
Unique Masterpiece  
Entirely manufactured in the Gérald Genta Workshops  
Poinçon de Genève







Nicholas Roerich (1874–1947), *The Treasure of the Angels*, 1904–05, mixed media on canvas, 320 by 366 cm. (126 by 144 in.). Estimate: £180,000–220,000 (\$290,000–360,000)

## A Russian Apocalypse Rediscovered

**Kenneth Archer** discusses Nicholas Roerich's *Treasure of the Angels*

*Treasure of the Angels* is a monumental painting in Byzantine icon style reconceived in post-Impressionist terms. An archangel and heavenly host guard a boulder covered with cryptic signs. The restricted palette, simplified lines and elision of detail turn the 12th-century conventions of Nicholas Roerich's painting into 20th-century forms. His Byzantine subject of the Holy City is localized in Northern Russian hills. No untroubled paradise, this is an armed camp. Completed in 1905, the work evokes the anxious sense of an ending that materialized in the proto-Revolution of that year. Ideologically, Roerich was in accord with patrons like Princess Maria Tenisheva, who strove to preserve traditional Russian culture in artists' colonies such as Talashkino.

*Treasure of the Angels* evinces a sombre, apocalyptic atmosphere, yet the treasure of its stone is full of promise, particularly

in the crucifixion and resurrection symbols on the boulder and archangel's shield. One of Roerich's earliest and most important religious paintings, this canvas marked his transition from historical to spiritual themes. Art historians have regarded it as the design for a mosaic or fresco at the Church of the Holy Spirit, Talashkino, which Roerich first visited in 1903. Later he created his massive mosaic *Saviour* (1909) over the church entrance and the *Queen of Heaven* fresco (1910) for its vaulted interior. *Treasure of Angels* may have been intended as a Talashkino mural, since Roerich in 1904 had executed *Archangel*, an oil sketch on canvas for Princess Tenisheva, which was presumably a detail of the larger work.

At the time of the Revolution the painting was with a group of Roerich's work being exhibited in Scandinavia, where he and his family relocated before moving to

England and the US. By 1923 patrons in New York established a museum in Roerich's name, which was housed in a purpose-built skyscraper on Riverside Drive. Originally owned by Helena Roerich, *Treasure of the Angels* was acquired by the museum and prominently displayed.

Until the painting was appropriated by the Roerich Museum chairman, Louis Horch, as part of a contested takeover in 1935, it was arguably the artist's most exhibited work. With the rest of his paintings at the museum, it was put into storage and lost to view. In 1971 the Horch family donated this and other Roerich canvases to the Rose Art Museum of Brandeis University where it was recently rediscovered and restored to reveal Roerich's rich mosaic of colour and texture. For the first time in 60 years the public can see *Treasure of the Angels* in all its former glory.

*Kenneth Archer is an internationally renowned art historian and scenic consultant. In 1983 he received a travel grant for research into Roerich's work from the Indian Council for Cultural Relations.*

**The Russian Sale**  
**London, 7th October**  
**Enquiries: Alice Milica Ilich**  
**0171 293 5325**



They say having money isn't important as long as  
you have your health. What if you have both?



Through diligence, discipline — and sheer hard work — you have been blessed with wealth. But to be truly fiscally fit, wealthy individuals must address unique financial questions. Which is where Glenmede can help. We've been managing the assets of prosperous people for more than 40 years, with an approach we call Total Wealth Management. First, we identify your financial challenges. Then, and only then, do we put our expertise to work to tailor a comprehensive solution that meets your needs and goals. This individually crafted plan puts a wide range of disciplines at your disposal, including investment management, business planning, estate planning, and tax and retirement planning. The result is a personal, long-term solution that ensures all of your assets work in concert. To preserve principal and maximize return with the least amount of risk. To learn more about Glenmede, call J. Thomas Dunlevy at 1-800-966-3200, or visit our web site at [www.glenmede.com](http://www.glenmede.com).

THE  
**GLENMEDE**  
TRUST  
COMPANY

*Most Personal. Most Secure.*

PHILADELPHIA • PRINCETON • CLEVELAND





# THE ART OF



Born in 1755, matured with the experience of generations of dedicated craftsmen, the art of Vacheron Constantin embodies centuries of achievement. Guided by long-established rules of excellence, today's watchmakers fuse inspired design and inventive horology into exceptional contemporary timepieces. Watches in the spirit of our time. Watches by Vacheron Constantin.

*Featuring an elaborate balance-wheel cover and dated 1755, its founder's first recorded watch set the tone: the art of Vacheron Constantin would prove epochal. From dainty 19th century ring watches to richly enamelled Art Deco table clocks and a Grande Complication's fifteen functions, vast watchmaking knowhow accumulated over the years. Today it comes alive in every new Vacheron Constantin.*



# VACHERON CONSTANTIN



**VACHERON CONSTANTIN**

THE WORLD'S OLDEST WATCH MANUFACTURER  
Geneva, since 1755

Vacheron Constantin, rue des Moulins 1, CH-1204 Geneva.



# Jewels from the Estate of Betsey Cushing Whitney



**John Block** introduces one of the most impressive  
jewellery collections ever to be sold at auction



This autumn, Sotheby's New York will have the privilege of offering jewels from the Estate of Betsey Cushing Whitney. Through 40 years of marriage to John Hay Whitney, Mrs Whitney was given jewellery celebrating their extraordinary life together. As such, the pieces offered from the Estate represent one of the most romantic collections of jewels ever to appear at auction.

One of three daughters of Katherine Crowell Cushing and Dr Harvey Cushing, the renowned neurosurgeon and Professor of Surgery at Johns Hopkins, Harvard and Yale Universities, Mrs Whitney was born in Baltimore in May 1908. In 1942 she married John Hay ("Jock") Whitney, the son of Payne and Helen Hay Whitney. Mr Whitney's maternal grandfather, John Hay, was well known throughout the country, having served as Secretary to President Abraham Lincoln and as Secretary of State to both Presidents William McKinley and Theodore Roosevelt. In addition, he was appointed to serve as the American Ambassador to the Court of St James's in Great Britain.

A dedicated philanthropist throughout her life, Betsey Whitney had numerous charitable commitments to which she lent her support, including North Shore Hospital in Manhasset, New York Hospital and Yale University Medical School. In addition, she and her husband were benefactors and donors to The National Gallery of Art, The Museum of Modern

Art and Yale University Art Gallery. Mr Whitney was an accomplished man of diverse talents who was known for his vision and generosity. In 1933 he organized Pioneer Pictures, which produced the first technicolour film short, and from 1936 to 1940 was Chairman of the Board of Selznick International Pictures. In 1946 he founded J. H. Whitney & Company, the first venture capital company in America. That same year, he started the John Hay Whitney Foundation, "to help people achieve social and economic justice, with particular focus on those who experience discrimination in our country because of race, gender or economic condition". He was also a leading figure in the publishing

business and his company, Whitney Communications Corporation, at various times owned several of the country's most distinguished publications including *The New York Herald Tribune* of which he was, from 1961, Editor-in-Chief as well as Publisher. Mr Whitney was Chairman of the *International Herald Tribune* from 1966 until his death in 1982.

In 1957 Mr Whitney was asked by President Eisenhower to serve as the American Ambassador to the Court of St James's, the same position to which his grandfather had been appointed 60 years earlier. The couple moved to England where they remained for four years. As the wife of the Ambassador, Betsey entertained frequently, often wearing the wonderful jewels designed and given to her by her husband. Mr Whitney loved to buy jewellery for his wife, delighting in surprising her with exquisite pieces on special occasions including her birthday, their anniversary and Christmas. He would choose a jeweller and engage in extensive consultations regarding the quality of colour and design of the piece he had in mind. What resulted, after years of creating extraordinarily personal pieces for his wife, was a collection that was truly ahead of its time. Many of these pieces exhibit a boldness of colour and whimsical design, giving them a character that was uniquely meaningful to Betsey. Whether the gift was a pearl and diamond bracelet by Verdura or a pair of canary diamond earrings by Van Cleef & Arpels, its personal nature and the enduring depth of their relationship are always apparent.



*Top:* an exquisite pair of diamond pendant-earclips, set with a colourless diamond weighing 11.59 carats and a Fancy Vivid Blue diamond weighing 11.04 carats, Cartier. Estimate upon request

*Above:* a pair of Fancy Vivid Yellow diamond earclips, Van Cleef & Arpels and Schlumberger. Estimate: \$500,000–600,000 (£300,000–370,000)

*Opposite:* an 18-karat gold and diamond necklace, mounted by Schlumberger. Estimate: \$400,000–500,000 (£245,000–300,000)

**Jewels from the Estate of  
Betsey Cushing Whitney  
New York, 19th October  
Enquiries: John Block and Paul Russo  
212 606 7392**



*John Block is director of International Jewels, Sotheby's North and South America.*



# Society's Belle

Glamorous and beautiful, Dorothy Hirshon was also a champion of issues and institutions that she believed in. **James Niven** looks back over her life

In September, Sotheby's New York will offer an impressive selection of fine art, French furniture and decorations, Continental porcelain and jewellery from the estate of Dorothy Hirshon. The late Mrs Hirshon was described by society writer David Patrick Columbia as "the most glamorous woman I've ever known: charismatic, brilliant, with just the right amount of breeding to give her a ticket to the world. Social, stylish, and chic on the outside, with a keen sense of beauty expressed in her art, her jewels, her clothes and her houses."

Frequently photographed as well as written about ("one of the most beautiful



Above: Sir Cecil Beaton, *Portrait of Dorothy Hirshon*, signed, water-colour, pen and ink on paper. Estimate: \$4,000–6,000 (£2,500–3,700)



Left: interior of Dorothy Hirshon's house with *Long Island Landscape (Path to the Beach)* by Childe Hassam on the far wall





Above: a pair of Régence-style provincial red-painted commodes, estimate: \$2,000–3,000 (£1,200–1,800); a pair of Venetian rococo-style blackamoor figures, 19th century, estimate: \$2,000–3,000 (£1,200–1,800), a pair of Louis XV-style painted and parcel-gilt bergères, estimate: \$2,000–3,000 (£1,200–1,800)

Below: Frederick C. Frieseke, *Punting on a Stream*, signed, oil on canvas, 73 by 92.1 cm. (28¾ by 36¼ in.) Estimate: \$400,000–600,000 (£245,000–370,000)



girls in Southern California”, said Irene Selznick), Dorothy Hirshon first captured the attention of the American public in 1927 with her marriage at the age of 19 to John Hearst, one of the five sons of William Randolph Hearst who, at that time, was the most powerful name in the newspaper business. The couple settled in New York where they became involved in the glamorous café society that characterized the lives of Manhattan’s wealthy elite. In between the glittering parties that dominated the couple’s social calendar,

Dorothy worked for *Harper’s Bazaar*, writing a successful column for the magazine. Her husband’s mother introduced her to the cream of New York society, but it was through her adoring father-in-law that Dorothy was able to refine her eye for fine and decorative art. The elder Mr Hearst, who admired Dorothy’s inquisitive mind, would often take her to Knoedler’s or Duveen Brothers to view the masterpieces that he was considering acquiring. Dorothy did not waste opportunities such as these to educate

herself and, over time, developed a refined sensibility.

After her divorce from John Hearst, she married William S. Paley, the founder of the Columbia Broadcasting System, better known as CBS, and they made a glamorous couple. As one of the best-dressed women in the world, the then Mrs Paley was frequently photographed for *Vogue* and *Harper’s Bazaar*. Horst and Cecil Beaton, two of the world’s most renowned photographers, worked with her as well as Matisse, who in 1939 presented her with a charming charcoal portrait.

In 1953 she married a great friend, Walter Hirshon, and began devoting her time to her favourite charities, which remained a priority until her death in June 1997. Dorothy Hirshon will long be remembered for her extraordinary contribution to institutions such as the Neighborhood Children’s Center, the New York City Human Rights Commission, the Hospitality Committee of the United Nations, the Vivian Beaumont Theater, Lincoln Center, Carnegie Hall, Phoenix House and the New School for Social Research, to name but a few. She was a courageous champion of issues and institutions that she believed in and was passionate in her defence of the same. To say that one had spirited conversations with Dorothy Hirshon would be an understatement. Greatly loved, she was a person of whom one can conclude that she had much but gave more.

**The Collection of the  
Late Dorothy Hirshon  
New York, 26th September**  
**Enquiries: Kevin Tierney (Silver)**  
**212 606 7160, Peter Rathbone or**  
**Dara Mitchell (American Paintings)**  
**212 606 7280, Mary Cunningham or**  
**Larry J. Sirolli (Furniture) 212 606 7577**



James Niven is a senior vice president and a director of Sotheby’s North America.





## Savannah Style

From deep in the American South comes a collection rich in variety and history. **Ronald Varney** reviews the Koger Collection

The deep South antebellum city of Savannah, Georgia, with its moss-draped streets and squares and its pervasive atmosphere of genteel elegance, was until recently little known and well off the tourist path. With the publication of John Berendt's blockbuster novel *Midnight in the Garden of Good and Evil*, however, along with a movie version of the book, Savannah has become a place of considerable mystique, its cobbled streets now busy with tour trolleys and visitors from all over the world. Having survived the Civil War intact, Savannah promises to survive its recent success as a classic, and very well-preserved, southern town.

On one of the most fashionable streets in Savannah's Historic district sits the Abraham Minis House, a part-Greek and

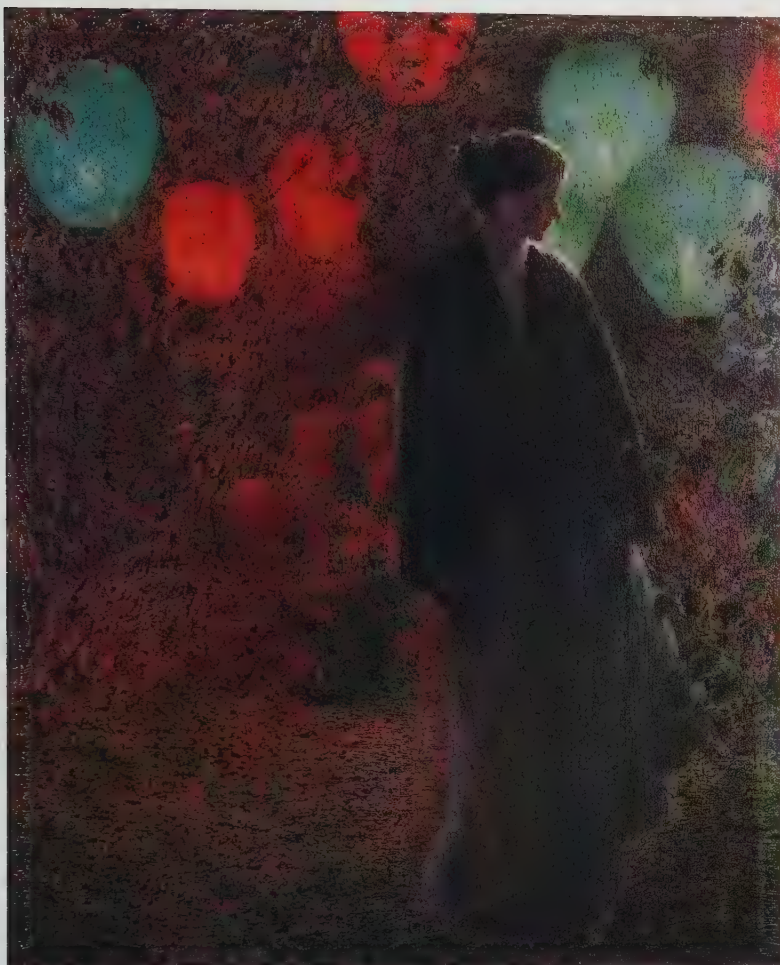
part-Italianate villa of 1860 that, until recently, housed the collection of Ira and Nancy Koger, which will be offered in a series of auctions this autumn at Sotheby's New York.

The centrepiece of these sales will take place on 24th October as the spirit of Savannah is evoked in a single-owner sale of English furniture and decorations, silver, Continental porcelain and ceramics, rugs, prints and fine art from the Koger Collection. Among the highlights will be a number of superb pieces of English furniture, including a pair of George II mahogany open-arm chairs, *circa* 1755, with their original Royal Aubusson tapestry covers from Newhailes House, Scotland. A fine George I walnut bureau cabinet, *circa* 1720, a Regency ebonized and

brass-mounted library cabinet, *circa* 1810, as well as a George III mahogany bed, *circa* 1770, and a number of fine mirrors will also be sold. The large collection of silver offered includes superb examples of different periods, such as monumental strapwork cups by London Huguenot makers, a brilliant set of Adam-style salvers of great refinement and a Regency inkstand of sarcophagus form decorated with masks, lions and urns. The pottery and porcelain in the sale offers further opportunities for collectors, comprising important delftware from England and Holland, an assortment of excellent English saltglaze and lead-glazed pottery, as well as many pieces of early English and Continental porcelain, predominantly from the 18th century.

Additional works of fine and decorative art will be offered from the Koger Collection in sales this autumn and winter. The American furniture and decorations will be sold on 9th October, with highlights such as an exceptional Federal inlaid mahogany sideboard labelled by William Lloyd, Springfield, Massachusetts, *circa* 1811, a Chippendale mahogany camel-back sofa, *circa* 1780, and





the James Wilson pair of Chippendale carved mahogany side chairs from Philadelphia, circa 1780, previously owned by a signer of the Declaration of Independence.

Among the many superb paintings in the Koger Collection are Joaquin Sorolla y Bastida's magisterial portrait of 1897, *The Three Errazuriz Sisters*, as well as Jules Bastien LePage's *Painting of a Country Girl*, dated 1882, both to be offered in Sotheby's sale of 19th Century European Paintings on 10th November. The unquestioned highlight of the American paintings is Childe Hassam's romantic picture of 1898, *July Night*, with its lush portrait of a woman awash in festive evening summer light. These and other American works will be sold on 3rd December, with the collection's Old Master paintings offered on 28th January 1999.

With the elegant interiors of the Abraham Minis house recreated for the Koger Collection single-owner sale, the style of old Savannah will come to Sotheby's New York on 24th October, bringing with it, no doubt, some of the mystical allure of that wonderful, and now highly popular, Southern capital.



*Top right:* Childe Hassam, *July Night*, 1898, oil on canvas.  
Estimate: \$1,500,000–2,000,000 (£920,000–1,230,000)

*Above:* the Abraham Minis House in Savannah's Historic district, formerly the home of Ira and Nancy Koger

*Opposite:* the Kogers' dining room

**Savannah Style: The Ira & Nancy Koger Collection, including the Property of Woodcock-Koger Corporation**  
New York, 24th October  
Enquiries: (English Furniture) Larry J. Sirolli 212 606 7577,  
(American Paintings) Peter Rathbone & Dara Mitchell 212 606 7280,  
(American Furniture) Leslie Keno 212 606 7130,  
(Silver) Kevin Tierney & Ian Irving 212 606 7160,  
(Porcelain) Christina Prescott-Walker 212 774 5325



*Ronald Varney is a senior vice president of Trust and Estates, Sotheby's North America.*



# An American Eye for Europe's Cultural History

The silver collected by Francis Fowler III spans centuries, styles, patrons and artists, as **Kevin Tierney** explains

The Fowler Museum on Wilshire Boulevard, Beverly Hills, closed its doors in the early 1980s and a three-day sale of related property was held at Sotheby's New York in February 1985. The major pieces from the museum were given to the University of California, whose gallery was renamed The Francis E. Fowler Jr Museum of Cultural History, the proceeds from the sale funding the installation. It may not be fully realized, outside the university and specialist silver circles, that the collection contains some exceptional Elizabethan and later material and that an excellent catalogue by Timothy Schroder, with an abridged essay by the late John Hayward of Sotheby's, has been available since 1991.

The title of the museum stresses cultural history, reminding us of the collecting interests of Francis Fowler Jr (1892–1975), inventor of the popular drink Southern Comfort. Echoes of the museum's collection reverberate in the sale of his late son's silver to be offered in New York. The earliest piece is a German 17th-century silver-gilt figural cup in the form of a lion rampant (opposite, below). Several items are by Paul de Lamerie, including a set of four Régence-style table candlesticks, a rare pair of double-lipped sauce boats, and a pair of serving dishes from the famous service ordered by Admiral Lord Anson following his circumnavigation of the world and his capture of booty from a Spanish treasure ship.

Some of the silver has Imperial or Royal pedigree. A pair of Augsburg neo-classical wine coolers was ordered by Catherine the Great for the Charkowschen service, demonstrating that her patronage went beyond Paris and London in her thirst for visible European cultural status. A large service of silver was ordered for the accession of George III to the throne of England in 1760; from this is a set of six large square-based table candlesticks by Simon Le Sage, who held the position of subordinate royal goldsmith from 1753 to 1759. The arms of one of George III's sons appear on a magnificent pair of candelabra by Benjamin Smith (left), executed in the Egyptian style popular after the Mediterranean campaigns and spread by designers such as Thomas Hope. By the same maker in conjunction with his partner Digby Scott is a suite of soup tureen and pair of sauce tureens in extremely refined Regency taste (opposite, above), showing detailed cast and applied work and Medusa head handles derived from French silver such as the work of Henry Auguste. These were supplied to the royal goldsmiths Rundell, Bridge and Rundell in 1806–07.

Francis Fowler III's collection also contains extensive useful silver for the dinner table, including entrée dishes, platters, salts and salvers. Many of these have interesting coats of arms, which, with the original role of function and status and the evidence they show of changing style, combine to tell the tale of Europe's cultural history as proscribed by the Fowler family.

**Important English and Continental Silver and Silver Gilt including the Collection of Francis E. Fowler III**

New York, 21st October

Enquiries: Kevin Tierney or Ian Irving  
212 606 7160



*Left: one of a pair of Regency silver three-light candelabra with the Royal Arms, Benjamin Smith, London, 1807, height 57.5 cm. (23 in.). Estimate: \$80,000–120,000 (£50,000–75,000)*





*Above:* a Regency silver soup tureen and pair of sauce tureens, Digby Scott & Benjamin Smith and Benjamin Smith, London, 1806–07 with the Latin signature of Rundell, Bridge and Rundell, length of soup tureen 41.2 cm. (16¼ in.). Estimate: \$70,000–90,000 (£43,000–55,000)



*Left:* a German silver-gilt cup in the form of a lion, Elias Zorer, Augsburg, circa 1600, height 22 cm. (8⅝ in.). Estimate: \$40,000–60,000 (£25,000–37,000)



Kevin Tierney and Ian Irving are joint senior vice presidents of the Silver department, Sotheby's New York.





Edward Matthew Ward, RA (1816–79), *King Lear and Cordelia*, signed and dated 1857, oil on canvas, 134.5 by 159 cm. (53 by 62½ in.). Estimate: \$80,000–100,000 (£50,000–60,000)

## “What visions have I seen”

**Renée du Pont Harrison** reviews a collection of Victorian paintings with Shakespearean themes



Throughout the Victorian era painters sought to gain a better understanding of important literary works by creating romantic narrative paintings of scenes from legends, plays, poetry and fairy tales. The dramatic and poetic effect achieved by these works was greatly appreciated by a public that delighted in sumptuous, allegorical compositions with a moral subtext. Accomplished artists such as Sir Edward Burne-Jones, John Everett Millais, William Morris, Dante Gabriel Rossetti and John Ruskin all regularly took their inspiration from such sources.

On 10th November a unique private collection of Victorian paintings employ-

ing Shakespearean themes, which, from 1985 to 1989, was part of an extensive travelling exhibition, will be offered at Sotheby's New York. Comprised of works by noted European painters, the collection includes episodes from many of Shakespeare's most popular plays. The romantic garden scene by Charles Delort from *Romeo and Juliet*, in which Juliet delivers her soliloquy revealing her love for Romeo, captures the essence of the story of two star-crossed lovers. Edward Matthew Ward depicts the moment when the ever-loyal Cordelia is reunited with her distraught father, King Lear. James Sant's grief-stricken, bewildered Ophelia,

delicate and ethereal, is portrayed just before her death, having endured Hamlet's rejection and the death of her father by her lover's sword.

Descriptive paintings such as these were often exhibited with an accompanying caption that further elaborated the subject. For example, Philip Hermogenes Calderon's *The Young Lord Hamlet* depicts a reminiscence shared by the prince with a gravedigger encountered on his return from exile in England. When a skull is unearthed and identified as belonging to Yorick, the long-dead court jester, Hamlet recalls the fond relationship that existed between them during his childhood: "Alas poor Yorick, I knew him Horatio; a fellow of infinite jest, of most excellent fancy. He hath borne me on his back a thousand times".

Clearly, one objective of this genre was to intensify the emotional import of such scenes. A belief common to the time was that post-Renaissance western art had become too cold and unemotional. From *Measure for Measure*, Calderon chooses to depict the charged scene that is alluded to have taken place between Mariana and Angelo when Mariana informs her lover that her dowry has been lost and is rejected by him. The character of Mariana was immensely popular with the Victorians who saw her as a symbol of spurned love; she is, for example, the subject of two poems by Alfred Lord Tennyson. As such, it is not surprising that Calderon chose this as the subject of his work, despite the fact that it is not acted out in Shakespeare's play.

Renée du Pont Harrison is Associate Editor of Preview.



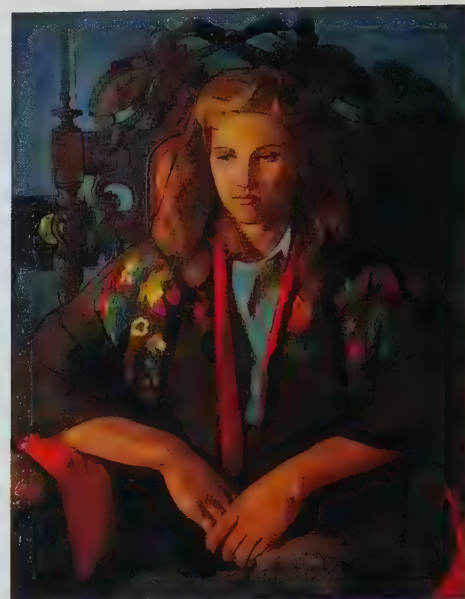
**Important 19th Century  
European Paintings, Drawings  
and Sculpture**  
New York, 10th November  
Enquiries: Nancy Harrison or  
Benjamin Dollar 212 606 7140

*Above left:* Philip Hermogenes Calderon, RA (1833–98), *Measure for Measure*, signed and dated 1873, oil on canvas, 71 by 93 cm. (28 by 36½ in.) Estimate: \$60,000–70,000 (£37,000–43,000)

*Left:* Philip Hermogenes Calderon, RA, *The Young Lord Hamlet*, signed and dated 1868, oil on canvas, 88 by 140 cm. (34½ by 55 in.). Estimate: \$70,000–80,000 (£43,000–50,000)



# A Hidden Art: The Work of John Napper



A personal account of artist John Napper's life and work, by friend and collector, **Sir Julian Critchley**



*Top left: Orchard in Winter (Clee Hill on the Horizon), signed and dated 1998, watercolour, 25.5 by 74.5 cm. (10 by 29¼ in.). Estimate: £3,000–5,000 (\$5,000–8,000)*

*Top right: Pauline in a Japanese Kimono, signed and dated 1947, oil on canvas, 91.5 by 71 cm. (36 by 28 in.). Estimate: £8,000–12,000 (\$13,000–20,000)*

*Above: John Napper in his studio, 1998*

*Right: Cats (Coco and Felix), signed and dated 1980, oil on canvas, 75 by 71.5 cm. (29½ by 28¼ in.). Estimate: £6,000–8,000 (\$10,000–13,000)*

The 82-year-old painter John Napper, who has been practising his art for the better part of 60 years, is to give a talk to an invited audience at Sotheby's London on the evening of 28th September. This will be as an introduction to a showing of his work that will be offered at auction in the Bond Street galleries two days later. Napper, one of the favourite painters of the Prince of Wales, whose portrait he painted two years ago, is to show 21 oils and some 12 watercolours.

A painter's painter, Napper began his career as a pupil of his father, an illustrator and a gifted watercolourist. Following war service, which included being an artist to Ceylon Command for a year, he had his first one-man show at the Leicester Galleries in 1949. After which, for seven years, he taught life painting two days a week at St Martin's School of Art. "Art Schools are the damnation of painting," he says now, "one tends to solve one's problems in the classroom rather than in the studio." Among his pupils were Frank Auerbach and Sheila Fell.

Napper abandoned teaching and portrait painting in 1956 – amongst his sitters were The Queen and Lady Churchill – in favour of going to live in France where he was able to develop a greater understanding of the use of oil paint. He had four one-man exhibitions in Paris. After 14 years spent in France, Napper was taken on by a New York dealer with whom he exhibited for 12 years. During this time he went to America where, for a year, he taught History of Art at the University of Southern Illinois.

In 1951 Napper had been commissioned by the Earl of Plymouth to paint a portrait of Lady Plymouth. Lord Plymouth became, in effect, his patron and since their return from the United States in 1971 the Nappers have lived in a farmhouse on the Earl's estate in South Shropshire.

Napper says that it is only in the past 20 years that he "has come into his own". A contemporary of William Scott and John Armitage, he has endlessly experimented. He does not fit into any of the fashionable critical categories so beloved by the contemporary art establishment. Not for him are cows cut in half. Napper's still lifes are much sought after, both at home and abroad. His "Modern Mythology" series express a strong sense of urban angst, as do the paintings from his Paris "Black Period" (1962–65). In this present selection of his work, *Dédoublement* and





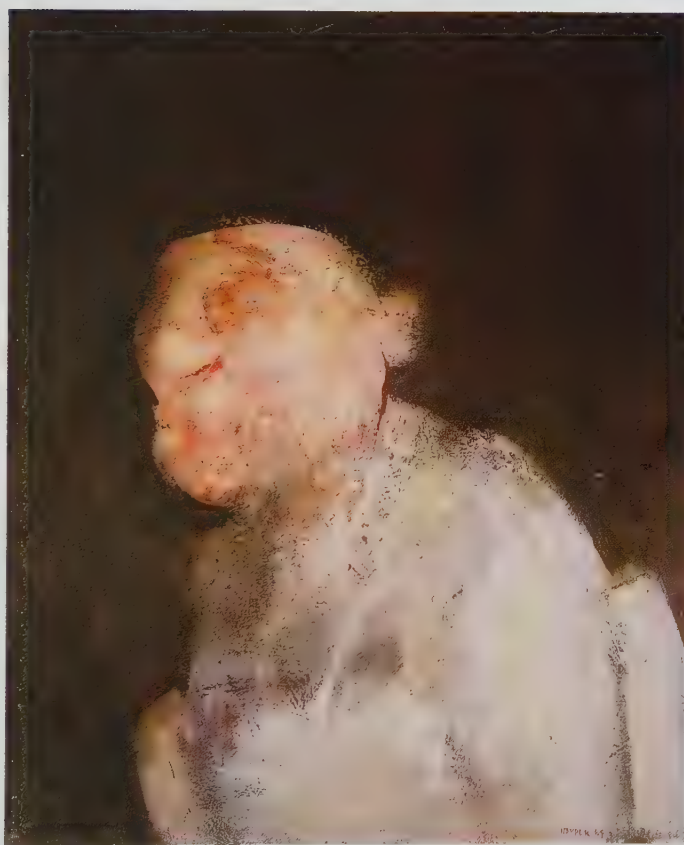


*Left: Aga and  
Upside-down  
Cat, signed and  
dated 1997,  
watercolour,  
49.5 by  
73.5 cm. (19½  
by 29 in.).  
Estimate:  
£4,000–6,000  
(\$6,500–9,800)*

*Above: the kitchen  
of Napper's home,  
showing the Aga  
that has been a  
central theme of the  
artist's since 1980*

*Right: Jack, signed  
and dated '64, oil  
on canvas, 73 by  
61 cm. (29 by  
24 in.). Estimate:  
£6,000–8,000  
(\$9,800–13,000)*

*Below: Notes for a  
Modern Mythology  
No. 1: Travelling  
Light, signed and  
dated 1987,  
watercolour, 71.5  
by 103 cm. (28¼ by  
40½ in.). Estimate:  
£5,000–7,000  
(\$8,000–11,500)*



the large *Red Nude* are examples of this phase, though maybe *Jack* is the most potent image from this period. Over the last 20 years it is the vitality of his home and surroundings that have given him inspiration for his work.

I have been a friend of the Nappers for several years and own many of his works, including six or more from his series of 37 views of Titterstone Clee Hill, the lion-headed hill that lies between Ludlow and the river Severn, which he painted in 1995 in response to Hokusai's 36 views of Mount Fuji. We have lunched with John and Pauline many times. Pauline, whom John met in Ceylon when she was a Wren during the Second World War, has inspired John to be almost as good a cook as he is a painter. John's painting of her new Aga may hang on the walls of the Ryder Street entrance to Christie's but the stove itself is responsible for the best cassoulet this side of Toulouse and a choucroute worthy of La Maison des Tanneurs in Strasbourg.

It will be my privilege to take the chair for Napper's talk at Sotheby's on 28th September where he promises not only to justify his art – which is hardly necessary – but to explain the philosophy behind so many years of creative endeavour.

*Sir Julian Critchley is a writer and served as a Member of Parliament for many years.*

**The John Napper Studio Sale  
London, 30th September  
Enquiries: Mark Adams  
0171 293 5381**



# In Living Colour

Stanley Smith's passion for natural history was just one aspect of his eventful life, as **Emma Lawson** explains



Right: Stanley Smith

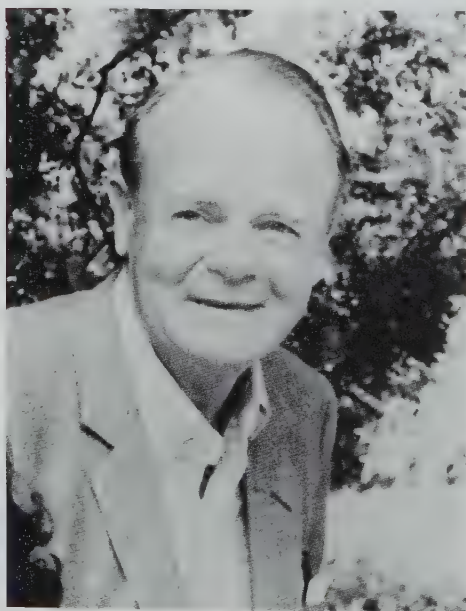
Above: Robert Warner and Benjamin S. Williams, *Select Orchidaceous Plants*, First Series, first edition, 40 hand-coloured lithographed plates, 1862–65. Estimate: £2,500–3,000 (\$4,075–4,900)

Opposite page: John Gould, *The Birds of Australia*, 8 volumes including Supplement, first edition, 681 hand-coloured lithographed plates, 1848–69. Estimate: £100,000–150,000 (\$165,000–245,000)

On 22nd October Sotheby's will offer the Stanley Smith Collection of Natural History Books. Consisting of some 300 lots of important colour-plate bird and flower books, this collection is a reflection of Smith's passions and of the places and events that shaped his life.

It is perhaps a defining feature of a century so marked by unprecedented global change, that some individuals, while being caught up and swept along by events, have also been able to maximize the opportunities provided, seeming to have a heightened awareness of their situation. Stanley Smith was such a man. Born in Brisbane, Australia in 1907, little is known of Stanley's early life but at the age of 16 he ran away from home and within a year was working as a journalist on the *Sydney Sun*, where he met John Galvin. The two men set out to walk across Australia, taking jobs working as "horseraiders" and running a number of business ventures, which included selling the exotic birds that sailors brought back from their voyages. It is not known whether this was profitable but it is the first evidence of an entrepreneurial spirit – and an interest in ornithology – that stayed with Smith for the rest of his life.

At the outbreak of the Second World War Stanley Smith was in Sydney, married with a daughter, Barbara, and working





for a magazine distributor. He was sent to Singapore to open a branch of the company, which was used as a front for gathering intelligence and disseminating anti-propaganda material, and established an underground information network in what was to become enemy territory. One of the last foreign-nationals to leave the country, Smith travelled to Bangkok and was there when it was bombed by the Japanese. He then went on to China's wartime capital Chungking and was appointed First Secretary of the British Embassy before being sent to the Ministry of Information in London. At the war's end he was repatriated to Hong Kong, where he again met up with John Galvin.

In their youth the friends had practised in miniature what they now put into effect on a grand scale. In addition to running a number of publications, they also set up a company to export goods from Japan. On learning that an acquaintance and his partners had had their lease cancelled on an iron ore mine in China, Smith suggested an alternative in Malaya. Not only did Japan have no ore of its own, it was also furnished with the only foundries that could process the sticky ore brought out from the Malayan mine: Smith and Galvin were perfectly placed for transporting and selling the product. Closely involved in all aspects of production, the two men eventually purchased the mine in 1952. Ten years later Smith bought out his partner and finally sold the company to its managing director in 1965.

Stanley Smith's business achievements facilitated his many other interests. His great passion was orchids: on moving to Nassau, Smith chartered a Boeing 707 to transport his collection from Singapore. He accumulated over a million plants and became one of the world's leading experts on the subject. Among the books offered on exotic flora are those that beautifully depict the orchids of Australia, Brazil, Guatemala, India, Mexico, Peru and the Philippines. In addition, the birds of these countries, as well as those of Asia, Europe and North America, are strongly represented, along with monographs on, for example, brush-tongued parrots, cranes, finches, humming-birds, kingfishers, swallows and toucans.

His interest in natural history led Smith to support many related causes around the world with money, enthusiasm and commitment: his gift of £150,000 in 1963 enabled the New Guinea Biological Foundation to be formed, he was one of the original benefactors of the World

Wildlife Fund and was a patron of the Rukeitu Rhododendron Trust in New Zealand, while he helped fund many major botanical projects in Australia. He originated the National Tropical Botanical Garden in Hawaii and made a major contribution to Kew Gardens in London, including a substantial gift to develop the "Queen's Garden".

When Stanley Smith died in 1968 he was in the process of establishing a horticultural trust. Twin foundations were set up in his name by his daughter

and second wife, May, with the former Director of Kew, Sir George Taylor; these continue to make a major contribution to the world of horticulture.

*Emma Lawson is editor-in-chief of Preview.*

**The Stanley Smith Collection of Important Natural History Books  
London, 22nd October  
Enquiries: Roger Griffiths or Alan Gillitt  
0171 293 5292 or 5293**





# A Passion for Wine

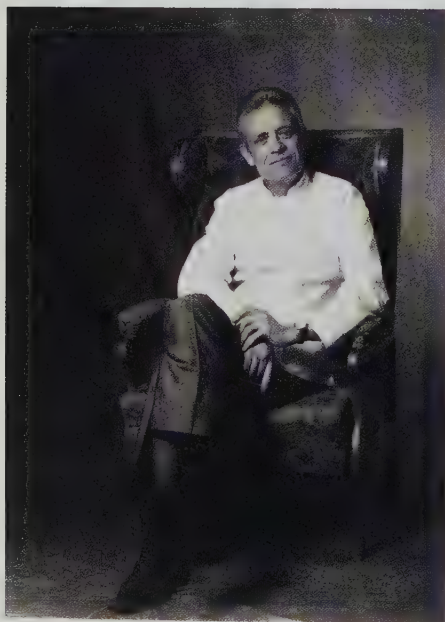
fg

The wine cellar of one of the greatest exponents of the art of gastronomy, the renowned Swiss chef, Fredy Girardet, will be auctioned by Sotheby's London in early October. For nearly three decades, connoisseurs of great food and wine made the pilgrimage to his restaurant, Girardet, in the small town of Crissier, near Lausanne on the shores of Lake Geneva. All the wines in his cellar were chosen personally by Monsieur Girardet for their outstanding quality to complement the sublime flavours of his cooking. The Girardet Collection includes all the world's most desirable wines with vintages back to the fabled epoch of the 1920s and into the wonderful 1990s. Extraordinary Bordeaux and Burgundy from the greatest Châteaux and Domains is a feature, while the Rhône and Alsace wines are from the best producers, as are those from Italy and Spain.

I have rarely seen a collection as well stored as this cellar, reflecting Fredy Girardet's passion for wine. The very cold temperature means that the wines retain

## Serena Sutcliffe

introduces highlights from  
The Girardet Collection



Above: Fredy Girardet

Right: Château d'Yquem 1921, estimate:  
£1,000–1,300 (\$1,600–2,100) per bottle;  
Château d'Yquem 1967, estimate:  
£250–350 (\$400–570) per bottle





all their splendour and youth. More than 2,000 cases will be sold and the sale is estimated to raise more than £1.2 million.

Classic wines form the backbone of this great sale, from Clarets of the magnitude of Pétrus, Lafite, Latour, Margaux and Mouton Rothschild to Romanée-Conti, Richebourg and La Tâche from Burgundy, as well as great domains such as Rousseau, d'Angerville, Leroy, de Vogüé and de Montille. "The white Burgundy is as fine as the red, featuring superb domains such as Leflaive and Sauzet and grands crus from the illustrious vintages of the 1990s. Notable Rhône wines include Reynaud's Châteauneuf-du-Pape Rayas 1989 and his celebrated 1978.

Italy is well-represented by Sassicaia 1985 and 1990, Gaja's Barbaresco and Barolo 1990 and Le Pergole Torte Riserva 1990, while from Spain there is Vega Sicilia.

Glorious Château d'Yquem is a major feature of the sale, with the finest Sauternes vintages of the century, such as 1928, 1955, 1976 and 1983. Luscious old Madeira and vintage Calvados make an appearance, as does top-level Champagne, such as Dom Pérignon, Krug and Bollinger.

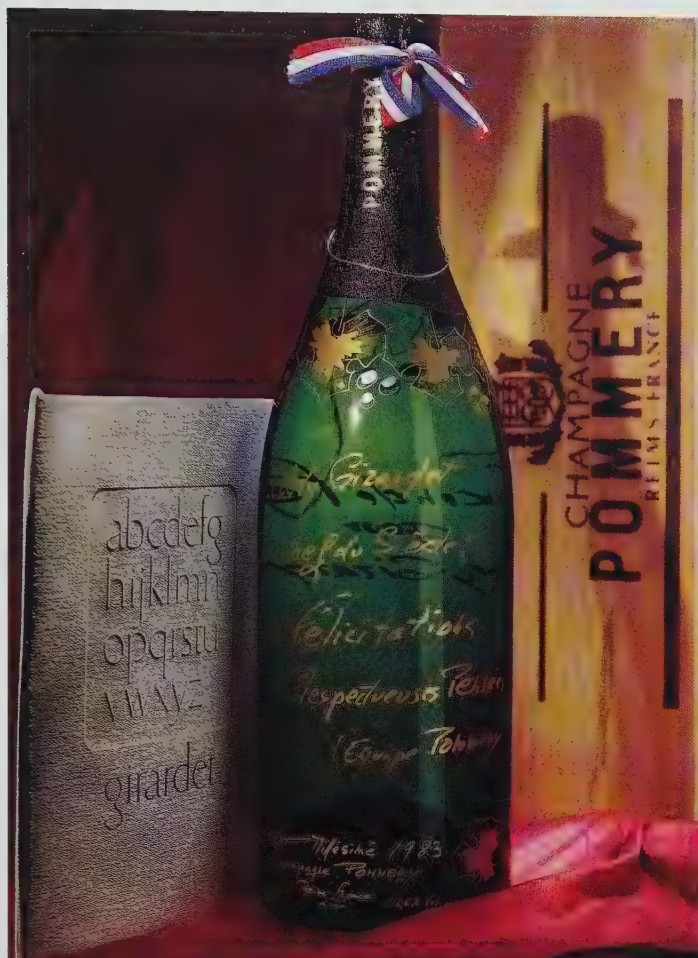
Bottle sizes vary from halves to Imperials and the span of vintages is all-encompassing with enormous strength in Claret all-time greats such as 1959 and 1961. Those looking for both young and mature wines will find all that they wish.

Every wine lover will appreciate the knowledge and enthusiasm that created this outstanding collection of wines.

**The Girardet Collection of  
Finest and Rarest Wines  
London, 6th and 7th October  
Enquiries: Serena Sutcliffe, MW  
0171 293 5045**



Serena Sutcliffe, MW is head of Sotheby's International Wine department.



*Left: a jeroboam of Pommery Brut 1983, which was specially dedicated to Fredy Girardet, estimate: £300–500 (\$490–815)*

*Below: Château Lafite 1945, estimate: £500–650 (\$815–1,000) per bottle; Romanée-Conti 1942, estimate: £700–1,000 (\$1,140–1,630) per bottle*





# A Brush with Genius

**David Bennett** anticipates the long-awaited retrospective of Daniel Brush's strikingly beautiful creations







This autumn the Smithsonian Institution in Washington DC will host an exhibition of the precious objects and sculptures created by Daniel Brush. Visitors to the Renwick Gallery of the National Museum of American Art will have the privilege of viewing the work of a modern master, work that is unparalleled in the history of contemporary art and yet, until now, unknown beyond a small international circle of informed collectors.

Daniel Brush's career began to great acclaim with an exhibition of his paintings at the Phillips Collection and the Corcoran Gallery of Art, which coincided with his appointment as a tenured professor at Georgetown University. This was followed by a long period of virtual seclusion spent almost exclusively in his New York loft. There he devoted himself to intense study and reflection, and to an awe-inspiring, uncompromising mastery of materials. This single-minded dedication resulted in a body of work of unique importance and extraordinary range: from exquisite,

granulated gold domes of absolute precision and breathtaking virtuosity, to the profoundly challenging beauty of the steel and gold sculptures that are each as enigmatic as a Zen koan.

Indeed, Oriental philosophy has been one of the many influences on Brush's idiosyncratic work, influences as varied and eclectic as the Noh theatre, W. O. Bentley's piston designs, Masumuni's blades and W. H. Auden's poems.

To coincide with the Smithsonian exhibition, Harry N. Abrams is publishing a lavishly illustrated monograph entitled *Daniel Brush, Gold without Boundaries*, to which, as a friend of Daniel's and an admirer of his work, I have contributed an essay. Further insights are provided by Ralph Esmerian, Paul Theroux, Donald Kuspit and Daniel Brush himself.

For those unacquainted with Brush's work, these events are a welcome introduction to his creative genius: you will not be disappointed.

*David Bennett is chairman of Sotheby's Switzerland, and the director of international jewels for Sotheby's Europe.*

**Exhibition: Daniel Brush**  
**Renwick Gallery of the National**  
**Museum of American Art,**  
**Washington DC**  
**11th September 1998 to**  
**10th January 1999**

---

*Above: First Dome, 1982-89,*  
 pure gold, steel, 6.99 by 6.05 cm.  
 (2¾ by 2⅜ in.)

*Opposite: Canto I, 1994-97,*  
 pure gold, steel, 27.94 by 10.16  
 by 1.27 cm. (11 by 4 by ½ in.)

*Photographs by John Bigelow Taylor,*  
 compliments Abrams



# Islamic Week

Making its annual appearance at Sotheby's in London, this event is rich with opportunity for the interested collector.

**Marcus Fraser** surveys the range of objects available



Above: Sir Richard Burton, *Personal Narrative of a Pilgrimage to El-Medinah and Meccah*, 3 vol., first edition, 1855–56. Estimate: £2,000–2,500 (\$3,300–4,000)

Above right: a Kutahya pottery flask, with Armenian inscription and dated AD 1794, Turkey, 19.5 cm. (7¾ in.) Estimate: £40,000–60,000 (\$65,000–100,000)



Every October at Sotheby's in London the galleries are filled with Middle Eastern exotica, from finely written Arabic calligraphy and inlaid metalwork to embroidered textiles and panoramic vistas of Ottoman life. The building is enlivened by an Oriental mystique that brings to mind the courtly life of Moorish Spain, Cairo, Constantinople, Isfahan and Mughal Delhi. With four sales devoted to the varied arts of the Islamic world there is a wealth of opportunity for collectors, museums and anyone interested in the culture of the Islamic world.

This year, for the first time, Sotheby's is holding a single main sale of Islamic art. Entitled "Arts of the Islamic World", it will include Arabic, Persian and Mughal manuscripts, calligraphy, miniatures, paintings, metalwork, ceramics, jewellery and arms and armour, and will effectively combine the old sales categories of Oriental manuscripts and Islamic works of art. Among the highlights is a 17th-century life-size portrait of a Persian princess

dressed in a lavish costume (see page 55). Showing the clear influence of Dutch artists, who were known to be present at the Safavid court in the Persian capital Isfahan at the time, it is one of only 12 such paintings known to have survived. Other notable pieces include a group of Mughal jade objects, a spectacular Indian diamond-set enamelled necklace (see page 56) and an important 14th-century illustrated manuscript of Firdausi's famous Persian epic poem the *Shahnama*.

An exciting addition to this year's sales is the Library of Peter Hopkirk (see page 60), a fascinating collection of books relating to the Middle East and Central Asia, including a rare early edition of Sir Richard Burton's *Personal Narrative of a Pilgrimage to El-Medinah and Meccah* (left). Peter Hopkirk is a well-known author and journalist and was, for many years, the Middle East correspondent for the London *Times*. The sale of his library offers an unrivalled opportunity for Oriental bibliophiles.



The sale of Oriental rugs and carpets is dominated by a rare and fine Safavid Persian silk velvet and metal thread brocade depicting a youth and a maiden drinking wine under a tree in a landscape (see page 57). It was probably made for the royal court at the end of the 16th century and is one of the largest surviving pieces of its kind in the world. Also included are an important 17th-century Star Ushak carpet and a fine collection of classical carpet fragments.

The grand finale of the week is the Turkish Sale, the third such event held at Sotheby's London devoted to Turkish art and European paintings of the Ottoman world. The Ottoman empire was one of the greatest the world has seen. At its height in the 17th century it stretched from the borders of Austria to Southern Arabia and from Morocco to the shores of the Persian gulf. Culturally it was a fascinating mix of East and West, with the Central Asian traditions of the Ottomans' ancestors combining with the inherited culture of the Byzantine empire and the Islamic traditions of the Middle East.

The sale contains a rich variety of works of art, including two pairs of 16th-century Iznik tile panels, a magnificent Ottoman wood-panelled interior, a late 18th-century gem-set jade box and a spectacular 19th-century set of gilded glasses and decanters. A fine group of Turkish textiles includes a group of four rare silk velvet and metal-thread *Yastiks* (cushion-covers). Among the paintings featured are a strong selection of works by European artists including portraits, views of Istanbul and landscapes of the Ottoman domains. Of particular importance are a rare portrait of Yousouf Bey, the Turkish envoy to the Court of St James's, painted in 1795 by Carl Friedrich von Breda (see page 58), and a fine 19th-century view of Istanbul by Ivan Aivazovsky.

*Above right:* an illustrated leaf from a manuscript of the *Siyar-i-Nabi* (Life of the Prophet), made for Sultan Murad III of Turkey, Constantinople, circa 1594, 37.2 by 22.4 cm. (14½ by 8¾ in.). Estimate: £15,000–25,000 (\$25,000–40,000)

*Right:* an Ottoman voided velvet and metal thread cushion cover, Bursa or Istanbul, Turkey, 17th century, 113 by 61 cm. (3 ft. 9 in. by 2 ft.). Property of the Erlenmeyer Foundation. Estimate: £8,000–12,000 (\$13,000–20,000)



Arts of the Islamic World  
London, 15th October 1998  
Enquiries: Marcus Fraser  
or Nicholas Shaw  
0171 293 5332 or 5154

The Library of Peter  
Hopkirk: Books on  
the Middle East and  
Central Asia  
London, 13th and 14th  
October 1998  
Enquiries: Roger Griffiths  
or Mitzi Mina  
0171 293 5292 or 5893

Fine Oriental and  
European Rugs and  
Carpets  
London, 14th October 1998  
Enquiries: Jacqueline  
Coulter or Jonathan  
Wadsworth 0171 293 5152  
or 5006

The Turkish Sale  
London, 16th October 1998  
Enquiries: Jonathan  
Coulborn (paintings)  
0171 293 5382;  
Nicholas Shaw (works of  
art) 0171 293 5154;  
Jacqueline Coulter  
(textiles) 0171 293 5152



Marcus Fraser is director  
of the Islamic and Indian  
Art department, Sotheby's  
London.



Arts of the Islamic World

LONDON

Thursday 15th October 1998

Enquiries: Marcus Fraser or  
Nicholas Shaw 0171 293 5332 or 5154

A Safavid blue-slip decorated pottery  
bowl, 17th century, diameter 38 cm.  
(15 in.). Estimate: £10,000–15,000  
(\$16,000–24,000)

*Opposite:* a portrait of a lady, Persia,  
probably Isfahan, *circa* 1650–90, oil on  
canvas, 162 by 89.5 cm. (63¾ by 35¼ in.).  
Estimate: £200,000–300,000  
(\$330,000–490,000)











Arts of the Islamic World

LONDON

Thursday 15th October 1998

Enquiries: Marcus Fraser or Nicholas Shaw

0171 293 5332 or 5154

An Indian diamond and emerald-set necklace with enamelled reverse, 19th century, 54.5 cm. (21½ in.). Estimate: £80,000–120,000 (\$130,000–200,000)





A Safavid silk velvet and metal thread strip  
and ciselé figural panel, possibly Kasvin,  
North Persia, last quarter 16th century,  
156 by 137 cm. (5 ft. 2 in. by 4 ft. 6 in.).  
Estimate upon request

Fine Oriental and European Rugs and Carpets

LONDON

Wednesday 14th October 1998

Enquiries: Jacqueline Coulter or

Jonathan Wadsworth 0171 293 5152 or 5006





## The Turkish Sale

LONDON

Friday 16th October 1998

Enquiries: Jonathan Coulborn (Paintings),  
Nicholas Shaw (Works of Art) or  
Jacqueline Coulter (Textiles) 0171 293 5382,  
5154 or 5152

Carl Fredrick von Breda (1759–1818),  
*Portrait of Yousouf Effendi, Turkish  
Ambassador to the English Court*, signed, oil  
on canvas, 240 by 148 cm. (94½ by 58¾ in.).  
Estimate: £150,000–200,000  
(\$250,000–350,000)

*Opposite: an Iznik polychrome pottery  
'Animal' dish, circa AD 1575, diameter  
30.5 cm. (12 in.). From the Kelekian  
Collection. Estimate: £30,000–40,000  
(\$50,000–80,000)*







# Adventures and Explorations



RAJAH'S PALACE, ADAM



P. 18. 2



Indian Foot Soldiers in their World of 1840

**Peter Hopkirk's collection of books on the Middle East and Central Asia is introduced by Roger Griffiths**

From the Ottoman Empire centred on Constantinople, bordering the Mediterranean and encompassing the Balkans, Greece, the Levant, Egypt and Arabia; by way of the Silk Route through Mesopotamia, Persia, the Caucasus and Afghanistan, to the Himalayas and the deserts of Taklamakan and Gobi in the east, the Peter Hopkirk Collection represents the finest group of 19th- and 20th-century travel and history books on the Middle East and Central Asia ever to be offered at auction by Sotheby's. These are the stories told by the great and famous explorers, of Burton, Hedin, Doughty, Schliemann, Layard, Burckhardt, Younghusband, Stein and Philby, and also of those now largely forgotten but equally heroic and extraordinary figures such as Buckingham, Wellsted, Freshfield, Pottinger, Prejevalsky, Conolly, Wolff and many more. Theirs was a world and a time inhabited by spies, scholars, adventurers, preachers and politicians.

The collection of some 3,000 titles in fine condition represents a lifetime of collecting by Peter Hopkirk, newspaper reporter, traveller and author. His six books include *The Great Game*, *Foreign Devils on the Silk Road* and *On Secret Service East of Constantinople*, and he has made extensive use of the books in his library as prime sources. Like the great explorers and travellers he describes, he is no stranger to adventure: twice he has been held in cells by secret police and has also been hijacked by terrorists.

Between the covers of these books can be found Richard Burton entering Mecca in disguise (*Personal Narrative of a Pilgrimage to El-Medinah and Meccah*, 1855-56), Carter discovering the treasures of Tutankhamen (*The Tomb of Tut Ankh Amen*, 1923-33), and the futile attempts of the Tibetans to defend their sacred city of Lhasa from outsiders (Candler's *The Unveiling of Lhasa*, 1905).

There are numerous eye-witness accounts of the Greek War of Independence (for example, Thomas Gordon's *History of the Greek Revolution*, 1832), and as many reports of the never-ending tragedy of the Balkans, notably by Edith Durham at the turn of the century.

There are also tales of the British Empire and the Great Game. Of Captain Arthur Conolly and Colonel Charles Stoddart, executed in Bokhara one June morning in 1842

as spies by the Emir, 4,000 miles from home, having spent their last months forgotten, half-starved and in filthy captivity (Wolff's *Narrative of a Mission to Bokhara*, 1845); also Dr William Brydon's escape from the disastrous British retreat from Kabul in 1842, the only one of some 16,000 who left the city to reach the destination of Jalabad (Lady Sale, *A Journal of Disasters in Affghanistan*, 1843).

On one level many of these books appear to be "ripping yarns" undertaken by young adventurers, but often they were also soldiers and spies who would become the foreign governors and administrators of these lands, as well as leading politicians.

The collection covers a period of great change in the Middle East and Central Asia. It was a time of expansion and consolidation for the European powers, and both China and Japan had interests in Central Asia. Countries that had existed in isolation for hundreds, if not thousands, of years were for the first time exposed to the unwelcomed attention of outsiders. Their world was never to be the same again. The Ottoman Empire was waning and by the close of the period British influence had disappeared forever. The map of every country was redrawn.

Many of these books have not appeared at auction before and this represents a unique opportunity to acquire works that are becoming increasingly difficult to find in any condition, let alone such fine copies.

*Roger Griffiths is a director of the Book department, Sotheby's London.*



**The Library of Peter Hopkirk: Books on the Middle East and Central Asia**  
**London, 13th and 14th October**  
**Enquiries: Roger Griffiths 0171 293 5292**



# ASIAWEEK

SOTHEBY'S

New York, 14th–19th September





Fine Chinese Ceramics, Furniture  
and Works of Art

NEW YORK

Thursday 17th September 1998

Enquiries: James B. Godfrey 212 606 7332

A large Ming blue and white dish,  
Jiajing mark and period, diameter 67 cm.  
(26 $\frac{3}{8}$  in.). Property from a Southwestern  
Collection. Estimate: \$40,000–60,000  
(£25,000–35,000)





Large and magnificent glazed caparisoned horse, Tang dynasty, height 77.5 cm. (30½ in.). Property of a Private American Collector. Estimate: \$250,000–280,000 (£150,000–170,000)







The Neal W. and Frances R. Hunter Collection  
of Fine Chinese Snuff Bottles

NEW YORK

Tuesday 15th September 1998

Enquiries: Dick Wang 212 606 7021

*Left to right:*

Agate snuff bottle, 19th century, 66 mm.  
(2 $\frac{5}{8}$  in.) high. Estimate: \$15,000–20,000  
(£10,000–12,000)

Suzhou white jade snuff bottle, 18th  
century, 46 mm. (1 $\frac{3}{4}$  in.) high. Estimate:  
\$8,000–12,000 (£5,000–7,500)

Agate snuff bottle, 18th–19th century,  
59 mm. (2 $\frac{3}{8}$  in.) high. Estimate:  
\$8,000–12,000 (£5,000–7,000)



Fine Chinese Paintings  
and Calligraphy

NEW YORK

Monday 14th September 1998

Enquiries: Andrew Wang  
or Noah Kupferman

212 606 7334

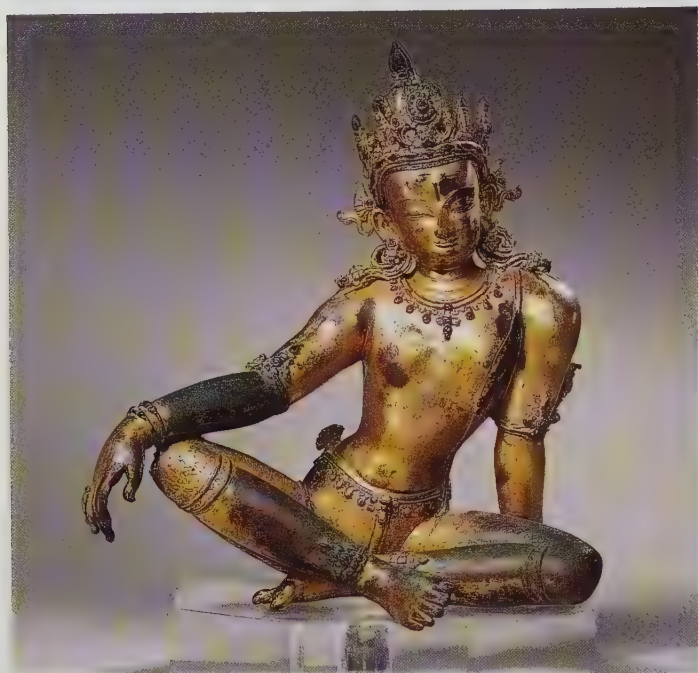


Shitao (1642–1707), *Bamboo*, hanging  
scroll ink on paper, 228.6 by 99.1 cm.  
(90 by 39 in.). Estimate: \$200,000–250,000  
(£120,000–150,000)



# Sublime Sculpture

**Carlton C. Rochell, Jr** introduces a group of gilt-bronze figures from Nepal that combine grace with sensuality



Among the many highlights from the forthcoming sale of Indian and Southeast Asian Art is an outstanding group of early Nepalese gilt-bronze sculptures that is undoubtedly one of the finest selections ever presented at auction. From the whimsical image of eagle-headed Garuda to the sublime standing figure of Buddha, this group represents the artistic skill and creativity of the Newari craftsmen working in the Kathmandu Valley from the 12th to 17th centuries. These anonymous Nepali sculptors achieved

*Above left:* a Nepalese gilt-bronze figure of a bodhisattva, circa 1300, height 36.8 cm. (14½ in.). Estimate: \$150,000–200,000 (£90,000–120,000)

*Above right:* a Nepalese gilt-bronze figure of Vasudhara, 1300–50, height 27.6 cm. (10¾ in.) Estimate: \$100,000–150,000 (£60,000–90,000)

*Opposite:* a Nepalese gilt-bronze figure of Buddha Sakyamuni, circa 1200, 50.8 cm. (20 in.). Estimate: \$300,000–500,000 (£180,000–300,000)

remarkably expressive representations of their gods, ranging from elegant and simple images of Buddha and bodhisattvas to vigorous and animated tantric deities, either wrathful or benign.

Surrounded by the snow-capped peaks of the Himalayas to the north, the kingdom of Nepal was strongly influenced by the pilgrims that arrived from the Indian subcontinent to the south, who mixed with the native population and founded the Licchavi dynasty around AD 400. They introduced Buddhism to the Kathmandu Valley and inspired its aesthetic tradition, as can be seen in the large standing figure of Buddha Sakyamuni, circa 12th century (opposite). The modelling of the torso beneath a diaphanous robe clearly derives from the earlier Gupta style produced in northern India, at Sarnath. A Nepalese gilt-bronze figure of a seated bodhisattva, circa 1300 (above left), demonstrates the ability of the Newari sculptors to create images that have both a divine and sensual presence. This was the classic pose in which kings in the Indo-Nepali world sat on thrones to demonstrate relaxed comfort and affability. A gilt-bronze figure of Vasudhara (above right), circa 1300–50, portrays the goddess of wealth seated



regally as she bestows kindness through the gesture of her right hand.

The Newari craftsmen were so highly respected for their skill and artistry that many were invited to the Yuan Court (1279–1368) to work in the imperial ateliers of the emperor. There they created the Yongle style, considered to be a benchmark in terms of the quality of bronze casting that the sculptures exemplified. These sophisticated and sublimely beautiful pieces will be on view during the exhibition of Indian and Southeast Asian Art 11th to 15th September.

**Indian and Southeast Asian Art including Modern and Contemporary Indian Paintings**

**New York, 16th and 17th September**  
**Enquiries: Carlton C. Rochell, Jr or Jeanne de Guardiola 212 606 7304**



*Carlton C. Rochell, Jr is senior vice president and director of the Asia Division, Sotheby's North America*









Indian and Southeast Asian Art including  
Modern and Contemporary Indian Paintings

NEW YORK

Wednesday 16th and Thursday 17th  
September 1998

Enquiries: Carlton C. Rochell Jr or  
Jeanne de Guardiola 212 606 7304

Jamini Roy, *Three Women*, signed in  
Bengali in lower right, gouache on card,  
74.3 by 38.4 cm. (29¼ by 15⅞ in.).  
Estimate: \$6,000–9,000 (£3,700–5,500)

*Opposite:* an important South Indian  
bronze figure of Shiva Nataraja, Chola  
dynasty, 12th century, 76.8 cm. (30¼ in.)  
high. Estimate: \$400,000–600,000  
(£250,000–350,000)







# A Refined Eye for Art in Miniature

Further items from the Collection of the late Charles A. Greenfield are to be offered for sale in New York in September; **Neil Davey** introduces a selection of highlights

Following the successful sale of *inro* from the Collection of the late Charles A. Greenfield in March, Sotheby's New York is pleased to offer further items from the collection in September. Unlike the earlier sale, Part II reflects the variety of Mr Greenfield's interests in the field of Japanese art with a selection of *netsuke*, *inro*, lacquer, swords and sword fittings from the collection.

Charles A. Greenfield initially began collecting *netsuke* in the late 1930s, but soon branched out to include *inro*, lacquer and sword fittings. He developed a refined eye and, over 60 years, compiled one of the most important collections of its type. Apart from a few pieces sold privately in the 1970s, this will be the first time that *netsuke* from the collection have been offered on the open market.



Above: a *Shakudo nanako tsuba* inlaid with gold, silver and *shakudo* romping horses in high relief, signed Yanagawa Naoharu, late 18th century, 7.8 cm. (3 1/8 in.).

Estimate: \$4,000–5,000 (£2,500–3,000)

Below: a *Shakudo kozuka* with Mt. Fuji rising above scattered clouds in cloisonné enamel, attributed to Hirata Donin, 17th century, length 9.8 cm. (3 7/8 in.).

Estimate: \$8,000–10,000 (£5,000–6,000)

Far left from top: a lacquered wood figure of Tekkai sennin, signed with green pottery seal Kan, (Ogawa Haritsu, 1663–1747), height 9.2 cm. (3 5/8 in.).

Estimate: \$30,000–40,000 (£18,000–25,000)

An unusual ivory *netsuke* of an *inro*, unsigned, 19th

century, length 3.8 cm. (1 1/2 in.). Estimate: \$2,500–3,500 (£1,500–2,000)

An ivory *netsuke* of a *yakko*, unsigned, late 18th century, height 6.7 cm. (2 5/8 in.).

Estimate: \$4,000–5,000 (£2,500–3,000)

The art of *netsuke* carving developed from a functional need. As the Japanese *kimono* has no pockets, it was necessary to carry everyday accessories slung through the waist sash or *obi*. Small toggles, or *netsuke*, were used to suspend objects such as tobacco pouches, pipe cases and *inro* (medicine or seal boxes) from the wearer's belt. Those used in the 16th century were simple, but by the late 17th and 18th centuries *netsuke* carving had become an art form.

It was only natural that Mr. Greenfield's interests would lead him to appreciate the remarkable metalwork found on Japanese sword fittings. As the sword was regarded as the "soul" of a *samurai*, considerable attention was devoted to its mountings. The various fittings used, including *tsuba* (guards), *menuki* (decorative grips), *fuchi-kashira* (end pieces to the hilt), and *kozuka* (hilt of a small knife concealed within the scabbard), were often decorative as well as functional. The masterful Japanese metalworkers utilized a palette of coloured metals, numerous surface treatments and an endless variety of subjects. The Greenfield Collection includes examples from the pierced ironwork of the 16th century to the elaborately decorated mixed-metalwork of the late 19th century.

Japanese Works of Art from the Collection of the Late Charles A. Greenfield, Part II

New York, 18th September

Enquiries: Ryoichi Iida or Katherine Martin (New York) 212 606 7338, Neil Davey (London) 0171 293 5141



Neil Davey is senior specialist in the Japanese Art department, Sotheby's London.





Yokoyama Taikan (1868–1958), *Pine and Cranes*, pair of six-panel screens, ink, colour and gold leaf on paper, each screen signed and sealed *Taikan*, 172.5 by 384 cm. (67 $\frac{7}{8}$  by 151 $\frac{1}{8}$  in.). Estimate: \$400,000–600,000 (£250,000–350,000)

Japanese Works of Art

NEW YORK

Friday 18th September 1998

Enquiries: Ryoichi Iida or Katherine Martin

212 606 7338





## Southeast Asian Paintings

SINGAPORE

Saturday 3rd October 1998

Enquiries: Quek Chin Yeow (Singapore)

65 732 8239 or Miety Heiden (Amsterdam)

31 20 550 2200

Adrien Jean Le Mayeur de Merprès  
(1880–1958), *Festival*, oil on canvas,  
90 by 120.5 cm. (35½ by 47½ in.).  
Estimate: S\$220,000–280,000  
(£80,000–100,000; \$130,000–160,000)





Trees of Life:  
The World of Hong Tong  
Fine Modern Chinese  
Oil Paintings, Drawings,  
Watercolours and Sculpture

TAIPEI

Sunday 18th October 1998

Enquiries: Crix Wu

886 2 2755 2906

Hong Tong (1920–87), *Space Cruising*, signed *hong tong* in Chinese, with one painted seal of the artist, *tong*, acrylic on paper, painted in the early 1970s, 143 by 41.3 cm. (56¼ by 16¼ in.). Estimate: NT\$2,000,000–3,000,000 (£35,000–55,000; \$60,000–90,000)





## Old Master Paintings

NEW YORK

Wednesday 14th October 1998

Enquiries: George Wachter, Heidi Chin or  
Christopher Apostle 212 606 7230

Jan van Kessel, the Elder (1626–79),  
*Still life of grapes and plums in a blue and  
white bowl, a bundle of asparagus, figs, an  
artichoke, a bowl of berries and a squirrel,  
all on a ledge*, oil on copper, 16.5 by  
21.8 cm. (6½ by 8⅝ in.). Estimate:  
\$20,000–30,000 (£12,000–18,000)





Nicola Casissa (d. 1730), *Ornamental gardens with still lifes of various flowers and birds, a pair, the first signed in the centre: . . . Casissa f.*, oil on canvas, each: 63.3 by 76.1 cm. (25 by 30 in.). Estimate: £30,000–40,000 (\$50,000–65,000)

Old Master Paintings

LONDON

Thursday 29th October 1998

Enquiries: Alexander Bell or George Gordon

0171 293 5420 or 5414





Important 19th Century European Paintings,  
Drawings and Sculpture

NEW YORK

Tuesday 10th November 1998

Enquiries: Nancy Harrison or  
Benjamin Doller 212 606 7140

Ludwig Deutsch (German 1855–1930),  
*Sharia El-Sanadkyeth*, signed and dated  
*Le Caire* 1889, oil on cradled panel, 61 by  
48.3 cm. (24 by 19 in.). Estimate:  
\$125,000–175,000 (£75,000–110,000)





Jean-Léon Gérôme (French 1824–1904),  
*Mufti Reading in his Prayer Stool*, signed,  
oil on canvas, 74 by 54.5 cm. (29 by  
21½ in.). Estimate: \$125,000–175,000  
(£75,000–110,000)



# Impressionist and Modern Art

LONDON

Wednesday 21st October 1998

Enquiries: Adrian Biddell, Helena Newman,  
Oliver Barker or Orla Coleman 0171 293 5392

A selection of ceramics by Pablo Picasso  
from a group of approximately 100.  
Estimates range between £300–500  
(\$500–800) and £15,000–20,000  
(\$25,000–30,000)







Above: Maurice Utrillo (1883–1955),  
*Rue de village*, oil on panel, signed,  
 27 by 46 cm. (10½ by 18 in.). Estimate:  
 £40,000–50,000 (\$65,000–80,000)

Right: Aristide Maillol (1861–1944),  
*Leda*, stamped with the monogram, white  
 terracotta, 28 cm. (11 in.) high. Estimate:  
 £25,000–30,000 (\$40,000–50,000)







Contemporary Art

LONDON

Thursday 22nd October 1998

Enquiries: Elena Geuna, Cheyenne Westphal  
or Benjamin Brown 0171 293 5401,  
5391 or 5494

Andy Warhol (1928–87), *Vesuvius*,  
signed and dated '85 on the overlap,  
synthetic polymer paint on canvas,  
180 by 200 cm. (70¾ by 78¾ in.).  
Estimate: £90,000–120,000  
(\$150,000–200,000)





Pierre Soulages (b.1919), *Peintre*:  
*13 Août 1959*, signed and titled on the  
reverse, oil on canvas, 162 by 113.5 cm.  
(63¾ by 44¾ in.). Estimate: £100,000–  
120,000 (\$160,000–200,000)





Scottish and Sporting Pictures

GLENEAGLES HOTEL

Wednesday 2nd September 1998

Enquiries: Sarah Colegrave 0171 293 5496

William McTaggart RSA RSW  
(1835–1910), *A Summer Day,  
Carnoustie*, oil on canvas, signed  
and dated W McTaggart 1890–9, 89  
by 138 cm. (35 by 54¼ in.). Estimate:  
£60,000–80,000 (\$100,000–130,000)





William Scott RA, *Eggs and Ivy Leaves*,  
gouache, 38 by 49.5 cm. (15 by 19½ in.).  
Estimate: £10,000–15,000 (\$15,000–25,000)

Modern British and Irish Paintings,  
Drawings and Sculpture

LONDON

Wednesday 30th September 1998

Enquiries: Susannah Pollen or Mark Adams  
0171 293 5388 or 5381





The Russian Sale

LONDON

Wednesday 7th October 1998

Enquiries: Alice Milica Ilich 0171 293 5325

Ivan Konstantinovich Aivazovsky  
(1817–1900), *View of the Bay of Naples  
with the Castel del'Ovo as seen from  
Posillipo*, signed and dated 1892, oil on  
canvas, 107 by 177 cm. (42 by 69½ in.).  
Estimate: £100,000–120,000  
(\$150,000–200,000)





*Above:* a selection of Objets de Vertu, by Fabergé, circa 1900

*Right:* Konstantin Egorovich Makovsky, (1839–1915), *Portrait of a Young Russian Beauty*, signed, oil on canvas, 79 by 53.5 cm. (31 by 21 in.). Estimate: £25,000–35,000 (\$40,000–60,000)







The Russian Sale

LONDON

Wednesday 7th October 1998

Enquiries: Alice Milica Ilich 0171 293 5325

Liubov Sergeevna Popova (1889–1924),  
*Birsk Landscape*, signed, oil on canvas,  
65 by 91 cm. (25½ by 36 in.). Estimate:  
£120,000–160,000 (\$200,000–250,000)



# Israeli and International Art in Tel Aviv



As Sotheby's in Tel Aviv continues to celebrate the 50th anniversary of the founding of the State of Israel, it brings to sale an unprecedented group of works spanning the history of Israeli art from the 1920s through to contemporary times.

Works from the earliest period of Israeli art reflect the response of the immigrant artists to the atmosphere and colours, light and landscape of the new Zionist settlement. Just such a work is Romanian-born Reuven Rubin's depiction of *Old Jerusalem*. Also notable are Israel Paldi's *Landscape of the Galilee* of 1923–25 and Nahum Gutman's painting on board, *The Fig Seller*, dated 1932, which portrays the Tel Aviv suburb of Neveh Zedek.

In 1948, with the birth of the State, came a transformation from figurative naiveté to the lyrical abstract. Leaders of the resulting "New Horizons" group are represented by an exceptional selection of works from the 1950s, including Yehezkel Streichman's *Nude by a Window*, Joseph Zaritsky's oil *Composition* and Avigdor Stematsky's *Pipe* (see page 12).

The conceptualism of 1960s Israeli art is found in several paintings on offer by Aryeh Aroch, a student at the Bezalel Art Academy in Jerusalem and of the Académie Collarossi in Paris. Aroch searched for forms taken from memory, literature, traditional motifs and anonymous objects, interpreting them through unconventional techniques, as seen in his *Grey Tzakpar* and *Blue Arch Violet*, to be sold here.



Above: Reuven Rubin, *Old Jerusalem*, signed, oil on canvas, 1926, 73 by 92 cm. (28¾ by 36¼ in.). Estimate: \$150,000–200,000 (£90,000–125,000)



Above left: Avigdor Arikha, *The Old Tuxedo*, signed and dated 12 V 75, oil on canvas, 146 by 114 cm. (57½ by 44⅞ in.). Estimate: \$60,000–80,000 (£35,000–50,000)

Left: Chaim Soutine, *Les Glailleuls Rouges*, signed, oil on canvas, painted circa 1919, 66 by 58 cm. (26 by 22¾ in.). Estimate: \$100,000–150,000 (£60,000–90,000)

Israeli contemporary art rounds out the collection on offer, with such works as *The Old Tuxedo*, a piece by Avigdor Arikha in which the artist attempts to express the quality of something quite ordinary.

Also distinguishing this October auction are paintings by masters of the École de Paris, such as Marc Chagall; Chaim Soutine's *Les Glailleuls Rouges*; Mane Katz' *Simchat Torah* and works by other leading artists such as Lesser Ury.

**Israeli and International Art**  
**Tel Aviv, Thursday 8th October 1998**  
**Enquiries: Rivka Saker or Daria Glück**  
**(Tel Aviv) 972 3 560 1666 or**  
**Richard Aronowitz-Mercer (London)**  
**0171 293 5723**





Old Master, 19th and 20th Century and  
Contemporary Prints

LONDON

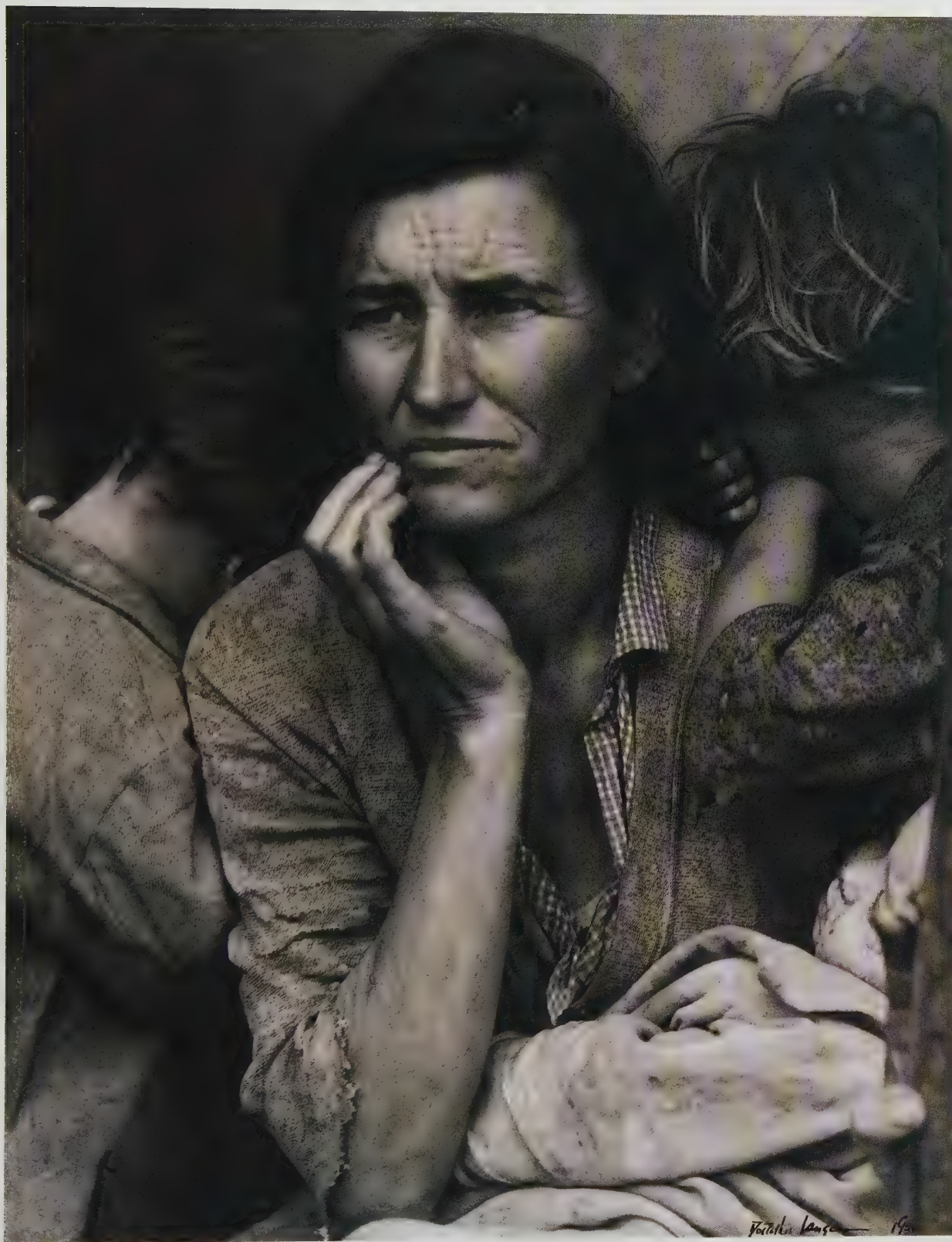
Wednesday 21st October 1998

Enquiries: Jonathan Pratt or Susan Harris

0171 293 5211

Andy Warhol (1928–87), *Marilyn* (F. & S. 28), silkscreen printed in colours, 1967, initialled and dated in pencil *verso*, stamp numbered 74/250, published by Factory Additions, New York, 91.5 by 91.5 cm. (36 by 36 in.). Estimate: £8,000–9,000 (\$13,000–15,000)





Dorothea Lange (1895–1965),  
*Human Erosion in California*, gelatin  
 silver print, 1936, mounted, signed, titled,  
 dated and with extensive notations by the  
 photographer in ink on the reverse, 34 by  
 26.7 cm. (13⅜ by 10½ in.). Estimate:  
 \$100,000–150,000 (£60,000–90,000)

## Photographs

NEW YORK

Wednesday 7th October 1998

Enquiries: Denise Bethel or Chris Mahoney

212 606 7240





European Works of Art, Arms and Armour,  
Furniture and Tapestries

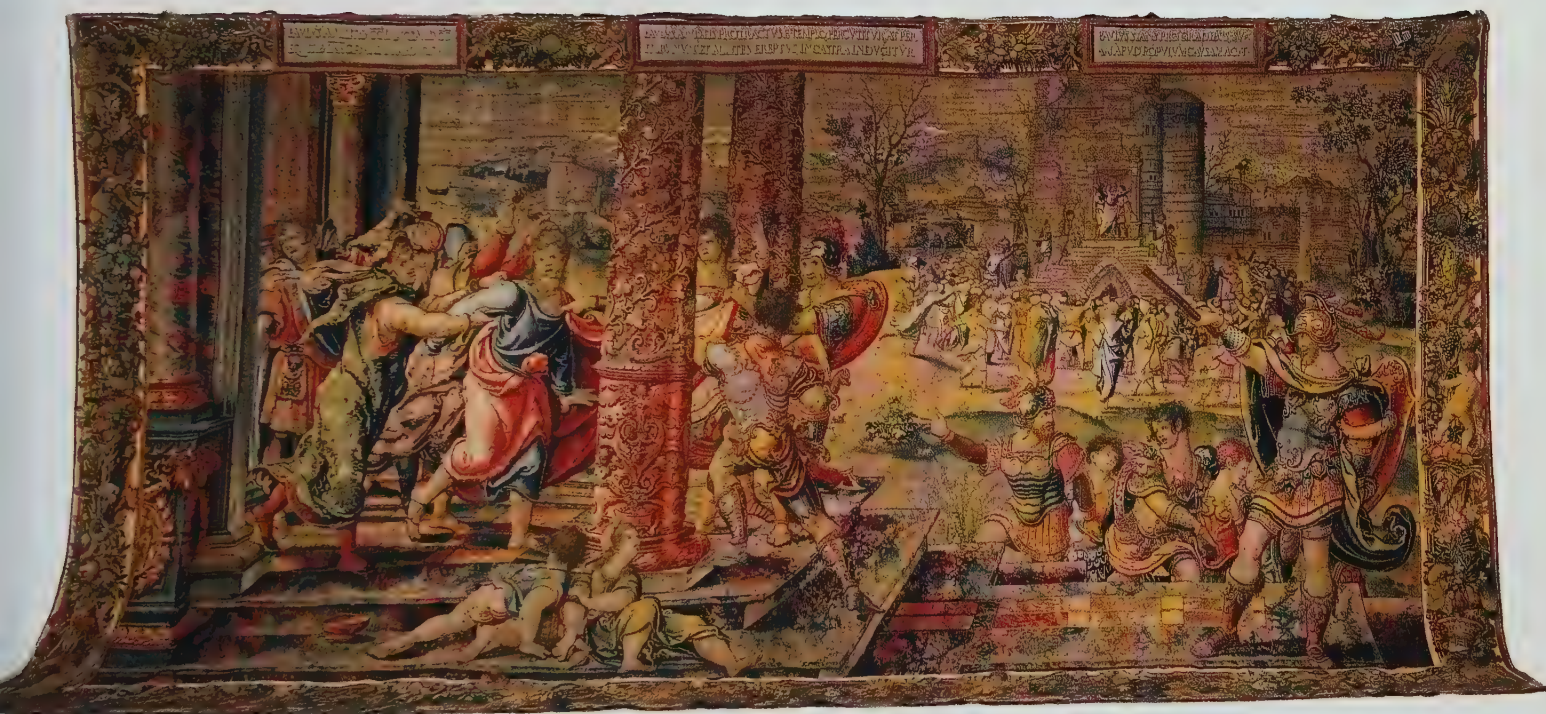
NEW YORK

Wednesday 23rd September 1998

Enquiries: Margaret Schwartz 212 606 7250

A gilt and polychrome wood triptych  
altar depicting scenes from the Life of the  
Virgin, possibly Saxony, late 15th century,  
central panel: 163.8 by 123.8 cm. (64½ by  
48 in.); wings 163.8 by 62.2 cm. (64½ by  
24½ in.). Estimate: \$200,000–300,000  
(£130,000–190,000)





A Brussels Old Testament tapestry depicting Saint Paul seized at the temple of Jerusalem, from the series *The Story of Saint Paul*, probably after designs by Pieter Coecke van Aelst, attributed to the workshops of Wilhelm de Pannemaker, second third of the 16th century, 4.2 by 8 m. (14 by 26 ft.). Estimate: \$200,000–250,000 (£120,000–150,000)





Continental Furniture, Decorations  
and Carpets

NEW YORK

Friday 25th September 1998

Enquiries: Phillips Hathaway or  
Mary F. Cunningham 212 606 7213

A pair of South American silvered-metal and ebonised mirrors, first quarter 19th century, signed *BNF Alpaca, No.3*, 138 by 99 cm. (4 ft. 6¼ by 39 in.), estimate: \$20,000–30,000 (£12,000–18,000); a Colonial silvered-metal-mounted ebony and hardwood Partner's Desk, third quarter 19th century, 93 by 145 by 104 cm. (36¾ in. by 4 ft. 9¼ in. by 40¾ in.), estimate: \$20,000–30,000 (£12,000–18,000); a Colonial silvered-metal-mounted ebony and hardwood parquetry mineral box, third quarter 19th century, 9.5 by 54 by 36 cm. (3¾ by 21¼ by 14¼ in.), estimate: \$2,000–3,000 (£1,000–2,000)



Fine English Furniture

LONDON

Friday 25th September 1998

Enquiries: Joseph Friedman, Graham Child,  
Fergus Lyons, Daniel Morris 0171 293 5470

A William and Mary oyster veneered and  
marquetry cabinet on stand. Estimate:  
£10,000–12,000 (\$15,000–20,000)





Important English Furniture, European  
Ceramics and Decorations

NEW YORK

Friday 23rd October 1998

Enquiries: Larry J. Sirolli or Peter Lang  
212 606 7577

A fine George III giltwood armchair,  
probably supplied to Sir Lawrence Dundas  
for Moor Park, Hertfordshire. Estimate:  
\$60,000–80,000 (£35,000–50,000)







A selection of fine Derbyshire spar objects, 18th/19th century, including a pair of obelisks, estimate: \$10,000–15,000 (£6,000–10,000); a gold-mounted urn, height 60 cm. (24 in.), estimate: \$25,000–35,000 (£15,000–20,000); a smaller companion pair, estimate: \$15,000–20,000 (£10,000–12,000); a pair of tazza, estimate: \$10,000–15,000 (£6,000–10,000)



19th and 20th Century Furniture and  
Decorations, Belle Epoque Series

LONDON

Friday 2nd October 1998

Enquiries: Jonathan Meyer

0171 293 5350 or 5107

A pair of marble and bronze sphinxes  
with putti, Leon Bruyer (d. 1885), dated  
1877, 114 cm. (44 $\frac{7}{8}$  in.) high,  
140 cm. (55 $\frac{1}{8}$  in.) wide. Estimate:  
£80,000–100,000 (\$130,000–160,000)





Part of an ebony, cedarwood, ivory and mother-of-pearl salon suite to a design by Sir Laurence Alma Tadema, comprising a settle, a pair of small settles and a set of four side chairs; large settle 246 cm. (97 in.) wide; small settles 128 cm. (50 in.) wide. From the Henry Marquand Mansion, New York City. Estimate: £150,000–200,000 (\$250,000–350,000)







*Above:* a pair of Regency silver-gilt wine coolers, Benjamin Smith II, London, 1814, formerly in the collection of the Dukes of Buckingham at Stowe, 39.3 cm. (15½ in.) high. Estimate: \$150,000–200,000 (£90,000–120,000)

Important English and Continental Silver  
and Silver-Gilt including the Collection of  
Francis E. Fowler III

NEW YORK

Wednesday 21st October 1998

Enquiries: Kevin Tierney or Ian Irving  
212 606 7160

*Opposite:* a Louis XVI silver soup tureen, cover, liner and stand, after designs by Jean-Guillaume Moitte and Henri Auguste, Paris, 1789, signed *Auguste Orfevre du Roi Paris 1790*, bearing the arms of Prince Vladimir Galatzine, 45 cm. (18 in.) high, 56 cm. (22 in.) diameter. Estimate: \$200,000–300,000 (£120,000–180,000)









Fine Americana

NEW YORK

Friday 9th October 1998

Enquiries: Leslie Keno, William Stahl, Jr  
or John B. A. Nye (Furniture) 212 606 7130  
and Nancy Druckman (Folk Art) 212 606 7225

A Chippendale carved and 'quilted'  
mahogany block-front, serpentine-front  
slant-front desk, attributed to John Cogswell,  
Boston, Massachusetts, *circa* 1770. Estimate:  
\$60,000–80,000 (£35,000–50,000)





The Howard A. and Catherine L. Feldman  
Collection of Important Chinese Treaty Port  
Paintings, English and American Furniture,  
Decorations, Folk Art, Clocks, Rugs and  
Phrenological Material

NEW YORK

Friday 9th October 1998

Enquiries: Leslie Keno, William Stahl, Jr  
or John B. A. Nye (Furniture) 212 606 7130  
and Nancy Druckman (Folk Art) 212 606 7225

Chinese Treaty Port paintings and  
English and American furniture in the  
living room of the Feldman residence



Fine Oriental and  
European Carpets  
including the Sailer Collection

NEW YORK

Thursday 1st October 1998

Enquiries: Mary Jo Otsea  
and Emily Moqtaderi

212 606 7996



An Oushak *Lotto* rug, West Anatolia,  
16th century, approx. 2.28 m. (7 ft. 6 in.)  
by 1.24 m. (4 ft. 1 in.). Property from the  
Sailer Collection. Estimate: \$200,000–  
250,000 (£120,000–150,000)



Applied Arts from 1880

LONDON

Wednesday 28th October 1998

Enquiries: Philippe Garner,  
Lydia Cresswell-Jones or  
Siobhán Anderson

0171 293 5138

*Les Têtards*, a carved, internally decorated and applied glass vase by Emile Gallé, circa 1900, 23 cm. (9 in.) high. This vase was a gift from Gallé to Louis Majorelle and is offered for sale by his descendants. Estimate: £80,000–120,000 (\$130,000–200,000)





## Magnificent Jewellery

NEW YORK

Monday 19th and Tuesday 20th October 1998

Enquiries: John Block or Paul Russo 212 606 7392

Diamond clip-brooch, Verdura. Estimate:

\$200,000–300,000 (£120,000–180,000)

Yellow diamond flower brooch,

Van Cleef & Arpels, New York. Estimate:

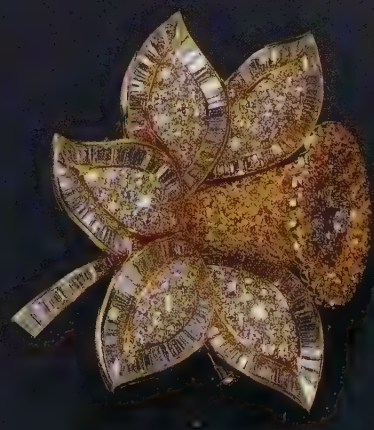
\$20,000–30,000 (£12,000–18,000)

Purplish pink sapphire and diamond  
pendant-brooch/necklace, pendant by

Verdura. Estimate: \$50,000–75,000

(£30,000–45,000) Property from the

Estate of Lydia B. Mann.

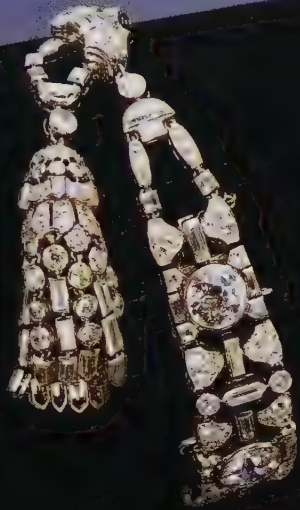




Platinum and diamond bow brooch,  
late 19th century. Property of a Private  
Collector. Estimate: \$65,000–75,000  
(£40,000–45,000)

Diamond tassel bracelet, Van Cleef &  
Arpels, France, *circa* 1925. Property of a  
Lady. Estimate: \$120,000–150,000  
(£75,000–90,000)

Art Deco platinum, sapphire and  
diamond bangle-bracelet, Cartier, *circa*  
1920. Property of a Private Collector.  
Estimate: \$150,000–200,000  
(£90,000–120,000)







Magnificent Jewellery

NEW YORK

Monday 19th and Tuesday 20th October 1998

Enquiries: John Block or Paul Russo

212 606 7392

Diamond necklace, Petoichi, *circa* 1900. Property of a member of a European Royal Family, from Queens Margherita, Elena and Marie Jose of Italy, by direct descent to the present owner. Estimate: \$400,000–500,000 (£250,000–300,000). Platinum, sapphire and diamond brooch, *circa* 1900. From the Collection of Queen Elena of Italy, by direct descent to the present owner. Estimate: \$20,000–30,000 (£12,000–18,000).





Platinum, ruby, diamond and cultured pearl bracelet, *circa* 1935. Property of a Gentleman. Estimate: \$50,000–75,000 (£30,000–45,000)  
 Ruby and diamond fringe-necklace, late 19th century. Property of a Private Collector. Estimate: \$75,000–100,000 (£45,000–60,000)  
 Kashmir sapphire and diamond ring, weighing approximately 13.25 carats, J. E. Caldwell & Co., *circa* 1930. Property from the Estate of Ruth C. Dunbar. Estimate: \$150,000–200,000 (£90,000–120,000).



Jewels from the Estate of  
Betsey Cushing Whitney

NEW YORK

Monday 19th October 1998

Enquiries: John Block or Paul Russo

212 606 7392



*From the top:* Sapphire and diamond  
brooch, Tiffany, Schlumberger. Estimate:  
\$80,000–100,000 (£50,000–60,000)  
Sapphire and diamond flower brooch,  
Schlumberger, Tiffany & Co. Estimate:  
\$60,000–80,000 (£35,000–50,000)  
Pair of Kashmir sapphire and diamond  
earclips, Schlumberger, Tiffany & Co.  
Estimate: \$125,000–150,000 (£75,000–90,000)



*Opposite:* Ruby bead, emerald and  
diamond necklace and matching earclips,  
Van Cleef & Arpels, New York. Estimate:  
\$100,000–150,000 (£60,000–90,000)









Fine Jewels

LONDON

Thursday 8th October 1998

Enquiries: Jonathan Condrup or  
Carmen Mata 0171 293 5485 or 5307

A ruby and diamond bracelet, circa 1930.  
Estimate: £6,000–8,000 (\$10,000–13,000).  
An emerald and diamond ring, Estimate:  
£4,000–5,000 (\$6,000–8,000). An emerald  
and diamond bracelet, circa 1930.  
Estimate: £10,000–12,000  
(\$16,000–20,000). A diamond necklace by  
Boucheron, 1920s. Estimate: £6,000–8,000  
(\$10,000–13,000).





A three-stone diamond ring. Estimate: £8,000–10,000 (\$13,000–16,000). A diamond rivière, *circa* 1880. Estimate: £7,000–9,000 (\$11,000–15,000). A pair of diamond flowerhead brooches. Estimate: £2,500–3,000 (\$4,000–5,000). A diamond rivière, last quarter of the 19th century. Estimate: £15,000–20,000 (\$24,000–33,000). A gold, half-pearl and diamond bracelet, *circa* 1870. Estimate: £2,000–3,000 (3,000–5,000)



## Important Watches, Wristwatches and Clocks

NEW YORK

Tuesday 27th October 1998

Enquiries: Daryn Schnipper 212 606 7162



A gold single-button chronograph wristwatch with register and tachometer, Patek Philippe & Co., Geneva, no. 860041, *circa* 1936. Estimate upon request

A gold single-button chronograph wristwatch with register, Patek Philippe & Co., Geneva, no. 198228, *circa* 1923. Estimate upon request

Gene Clark no. 4, an American gold openface tourbillon watch with constant force, moon phases and up-and-down indicator, *circa* 1991. Estimate: \$100,000–125,000 (£60,000–75,000)



Important Clocks, Watches,  
Wristwatches, Barometers and  
Mechanical Musical Instruments

LONDON

Thursday 1st October 1998

Enquiries: Michael Turner,

Jonathan Darracott or

Simon Chesters-Thompson

0171 293 6407



George Graham, No. 734, London,  
*circa* 1735, a burr walnut longcase clock,  
with original numbered winder, 238 cm.  
(7 ft. 9 in.) high. Estimate: £50,000–70,000  
(\$80,000–110,000)







Sherry Lehmann with Sotheby's  
Finest and Rarest Wines

NEW YORK

Saturday 26th September 1998

Enquiries: Jamie Ritchie, Robert Sleigh or  
Oliver Bareau (New York) 212 774 5330 or  
Serena Sutcliffe, MW (London) 0171 293 5045

A unique Superlot of ten Melchior's  
(18 litre bottles) of Caymus Special  
Selection Cabernet Sauvignon 1985–1995  
(1993 was not produced). Estimate:  
\$60,000–100,000 (£35,000–60,000).  
Offered without reserve



# COUNTRY HOUSE SALE

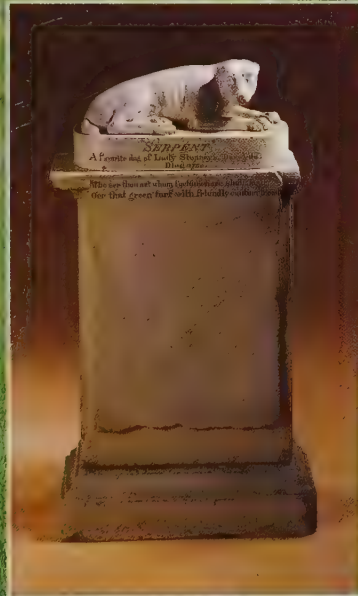
## Derwydd Mansion, Llandeilo, Carmarthenshire



Above: Francis Cotes, RA, *The Vaughan Children*, pastel, signed and dated. Estimate: £40,000–60,000 (\$65,000–100,000)

Middle: a George II painted stone monument to Serpent, a favourite dog, the property of Lady Stepney, circa 1750. Estimate: £5,000–8,000 (\$8,000–13,000)

Right: a 'famille-rose' armorial dinner, tea and coffee service, Qianlong, circa 1750. Estimate: £20,000–30,000 (\$30,000–50,000)



Sale:  
Tuesday 15th September 1998  
10.30am & 2.30pm

Viewing in September:  
Saturday 12th, 9.30am to 5.30pm  
Sunday 13th, 9.30am to 5.30pm  
Monday 14th, 9.30am to 5.30pm

Enquiries: James Miller or Georgiana Bruce  
(London) 0171 293 5405 or 5055  
John Harvey (Cheltenham) 01242 510 500

Derwydd is the ancestral seat of the Vaughan, Stepney and Gulston families. Never sold, it has passed down by inheritance since the 14th century and the collection reflects the tastes and interests of many members of the family. The sale, comprising in excess of 450 lots, will include furniture, oriental ceramics, works of art and sculpture, books, glass, miniatures, fans, costumes and textiles, photographs, and the celebrated collection of English and Welsh portraits.



# COUNTRY HOUSE SALE

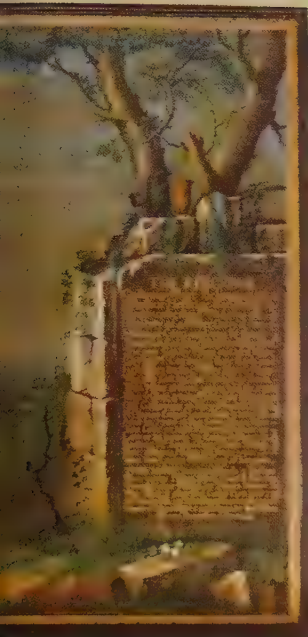
## Noseley Hall

### Billesdon, Leicestershire

Noseley Hall has been the seat of the Hazlerigg family since 1420. The history, aspirations and taste of successive generations are reflected in its collection. The sale includes paintings, works of art and furniture collected by Sir Arthur Hesilrige, 7th Bt., who visited Italy on his Grand Tour in 1723 and 1724. Also featured are works of art associated with Sir Arthur Hesilrige, 2nd Bt., the great Parliamentary general; furniture and sculpture relating to Sir Arthur Grey's refurbishment of the house in the early 19th century; and the Japanese works of art purchased by Sir Arthur Hazlerigg, 14th Bt. on his 1902 world tour. Books, silver, European ceramics and glass, armour and other household effects from the estate make up the other 550 lots included in the sale.







## Sale:

Monday 28th September, 11.00am & 2.30pm  
and Tuesday 29th September, 11.00am

## Viewing in September:

Friday 25th, 9.30am to 5.30pm

Saturday 26th, 9.30am to 5.30pm

Sunday 27th, 9.30am to 5.30pm

Enquiries: James Miller or the Hon. Ralph Foljambe (London) 0171 293 5405 and Louise Massey (Stamford) 01789 751 666

## Clockwise from top left:

E. Forsett, *Ringtail, a Galloway Mare, held by a groom*, circa 1730. Estimate: £60,000–80,000 (\$100,000–130,000)

An Italian scagliola table top attributed to Hugford on a George II gilded walnut side table. Estimate: £60,000–80,000 (\$100,000–130,000)

Studio of Giovanni Paolo Pannini, *An architectural capriccio of Roman ruins with soldiers and other figures before an Equestrian sculpture of Marcus Aurelius*, in a magnificent English contemporary frame. Estimate: £30,000–40,000 (\$50,000–65,000)

The Northampton Stakes silver-gilt cup and cover, 1817. Estimate: £4,000–6,000 (\$6,500–10,000)

Robert Walker (1607–58/60), *Portrait of Sir Arthur Hesilrige, 2nd Bt., (d. 1661)*, oil on canvas, dated 1640, in a carved wood frame. Estimate: £70,000–90,000 (\$110,000–145,000)

One of a pair of George II giltwood mirrors, circa 1735. Estimate: £60,000–80,000 (\$100,000–130,000)





HEY JUDE don't make it bad,  
take a sad song and make it better.  
Remember to let her into your heart  
Then you can start to make it better.

Hey Jude don't be afraid,  
You were made to go out and get her.  
The minute you let her under your skin,  
Then you begin to make it better.

And any time you feel the pain,  
Hey Jude refrain, don't carry the world upon  
your shoulders.  
For well you know that it's a fool who plays  
it cool by making his world a little colder.

Hey Jude don't let me down,  
Admit your feelings and don't forget her.

So let it out + let it in,  
Hey Jude begin - bow down to the plasticine banana.

## Rock and Roll Memorabilia

### LONDON

Tuesday 15th and Wednesday 16th September 1998

Enquiries: Stephen Maycock 0171 293 5206

Mal Evans' notebook, compiled during  
1967-68, which includes a draft by Paul  
McCartney of the lyrics for *Hey Jude*,  
red ink. Estimate: £90,000-120,000  
(\$150,000-200,000)



# SOTHEBY'S

---

## International Realty

BEVERLY HILLS

BOSTON

BRENTWOOD

BRIDGEHAMPTON

EAST HAMPTON, NY

GREENWICH

HONG KONG

LONDON

MELBOURNE

NEWPORT BEACH

NEW YORK

PALM BEACH

PARIS

SAN FRANCISCO

SANTA BARBARA

SANTA FE

SOUTHAMPTON, NY

SYDNEY



## DEER VALLEY, UTAH

### *Deer Crest*

Presenting the new leader in mountain resort luxury – Deer Crest – North America's most prestigious new Ski-in, Ski-out Community. Located only 35 minutes from Salt Lake City International Airport, this gated community encompasses 600 acres of exquisite woodlands in the heart of world-famous Deer Valley Resort, Utah, the venue for several competitive events in the 2002 Winter Olympics. Deer Crest comprises an impressive array of ski-in, ski-out real estate, including luxury condominiums, hotel condominiums, and 125 single-family homesites. The homesites average approximately  $\frac{3}{4}$  acres each. With a vertical elevation separation of over 1,500 ft., each homesite will command breathtaking vistas of the surrounding mountains, Jordanelle Reservoir and Deer Valley Resort's ski-runs.

Equally impressive are the community's amenities: entry gates, nine world-class ski runs, a high-speed quad lift, the mile-long Jordanelle Express Gondola (all operated by Deer Valley Resort), a mountain bike trail system and the planned five-star Deer Crest Grand Lodge and Hotel. Many of the Hotel's services and facilities will be available to Deer Crest homeowners, including 24-hour concierge, catering, gourmet restaurants, world-class spa and health centre, culinary school and Kid's Delight Activity Centre. Initial estate lot prices range from \$675,000–1,500,000. *Brochure no 6028001*

Not available in jurisdictions where the property is not registered to be sold

#### **Sotheby's International Realty**

980 Madison Avenue, New York, NY 10021

Telephone: 212 606 4100 Fax: 212 606 4199

1111 Bayside Drive,

Corona del Mar, CA 92695

Telephone: 949 644 9200 Fax: 949 644 3588

#### **Enquiries in London**

Nicholas Kibble, 34–35 New Bond Street,

London W1A 2AA

Telephone: 0171 293 6443 Fax: 0171 293 5949

#### **Enquiries in Sydney**

Martin Schiller, 118–122 Queen Street,

Woollahra 2025

Telephone: 612 9362 1000 Fax: 612 9362 1100



# SOTHEBY'S

## International Realty



Brookline, Massachusetts  
Distinguished Estate Home

15,000+ sq. ft. home designed by renowned architect Robert A. M. Stern, set on 6+ park-like acres. Formal entry reveals the skylit marble-floored gallery and vaulted living room with marble fireplace and broad bow window overlooking the grounds. The 6-bedroom residence enjoys a formal dining room and oak-panelled library with fireplace, kitchen complex, family room with fireplace, and luxurious indoor sporting amenities including a basketball court and pool. \$7,995,000. *Brochure no P0540418*



Sydney, Australia  
Elizabeth Bay

This luxury waterfront development of six apartments enjoys magnificent harbour views. Features include a 24-hour concierge, comprehensive security system, gourmet kitchens with Gaggenau appliances, large terraces, a 20-metre heated lap pool and pavilion, a perfect north easterly aspect, world class finishes and double garaging. A\$5,000,000



Mont d'Arbois, France  
Megève Chalet

The chalet was built in the beginning of 1900 on the heights of Pettoreaux. With 7 bedrooms, 3 reception rooms, a basement and large garage, it sits on 7,000 sq. m. of wooded grounds with a panoramic view of the surrounding mountains. *Brochure no P1830089*

Greenwich, Connecticut  
The Merritt-Finch House

This historic 17-room main house sited on 4+ acres (*circa* 1860) was extensively renovated in 1995. Replete with period detailing, the stately home is distinguished by 8 fireplaces, fluted columns, corkscrew staircase balusters and arched passageways. The compound also includes carriage house with apartment, stables, pool, magnificent gardens and century-old trees. *Brochure no P5410162*





## Southampton, New York Halsey Neck Lane

This meticulously restored shingle-style estate (*circa* 1905) in Southampton on nearly four manicured acres with 100-year-old specimen trees and formal gardens boasts a magnificent main house with verandahs, wrap-around porches, pool house, sunken tennis court and 3-car garage with additional unfinished space. Mint move-in condition.  
*Brochure no P5810074*

## St. Vincent, West Indies The Terraces, Mustique

One of the Caribbean's finest properties, this 17± acre estate enjoys 360-degree vistas to the sea. The Palladian-style villa is a masterwork of Old World elegance and state-of-the-art luxury with 13 rooms, terraces, fountain courtyard, 100 ft. long heated pool and tennis complex. The rooms are lavished with important marble, exquisite hand-painted walls and ceilings, and fine furnishings from around the world. Furnished.

*Brochure no P0840123*



## Bedford, New York Hemlock Hill

Designed for grand living and entertaining, Hemlock Hill is known for its magnificent grounds where velvety lawns and 4 sparkling ponds provide an ideal backdrop for enchanting English gardens. Exquisitely detailed, the 1928 French Country-style residence offers grandly scaled formal rooms, 6 bedrooms, 6 bathrooms and 6 ornate fireplaces. Pool, poolhouse, tennis court, 5 bedroom guest house, caretaker's apartment, two greenhouses, and a 9-car garage.  
*Brochure no P8100292*



# Highlights & Auction Calendar



**Animalier and Scottish Sculpture**  
Gleneagles Hotel,  
Tuesday 1st September 1998  
Enquiries: (London) 0171 293 5337

Isidore-Jules Bonheur (1827–1901), *A Running Wild Boar*, signed, bronze, dark brown patina.  
Estimate: £3,000–5,000 (\$5,000–8,000)



**Scottish and Sporting Pictures**  
Gleneagles Hotel,  
Wednesday 2nd September 1998  
Enquiries: (London) 0171 293 5496

Louis Bosworth Hurt (1856–1929), *Coming Down From The Hills*, signed and dated *Louis B. Hurt/1895*, oil on canvas.  
Estimate: £25,000–35,000 (\$40,000–60,000)

## Note:

This is the provisional auction calendar for the months of August, September, October & November. It is correct at the date of going to press.

## London

34–35 New Bond Street  
London W1A 2AA  
Tel: 0171 293 5000  
Open: Monday–Friday  
9am–4.30pm  
Sunday 12 noon–4pm  
During the sale season  
late-night viewing Monday  
until 8pm  
24-hour Recorded  
Auction Information:  
Current Auctions  
& Viewing  
Tel: 0171 293 5868  
Spoken Auction Results  
Tel: 0171 293 5855  
Faxed Auction Results  
Tel: 0171 293 5959

## SEPTEMBER

- 8 Rugs, Carpets, Furniture & Decorations
- 9 19th Century Paintings & British Watercolours
- 10 Silver
- 15 Furniture & Decorations
- 15–16 Rock & Roll Memorabilia
- 16 Fine & Rare Wines, Spirits & Vintage Port
- 17 Film Posters & Memorabilia  
Jewels
- 23 Formula 1 & Grand Prix Memorabilia
- 24 Important Costumes, Textiles & Fabric Swatch Books
- 25 Fine English Furniture
- 30 Modern British & Irish Paintings, Drawings & Sculpture  
The John Napper Studio Sale

## OCTOBER

- 1 Important Clocks, Watches, Wristwatches, Barometers & Mechanical Musical Instruments

- 2 19th & 20th Century Furniture & Decorations, Belle Époque Series
- 6 Furniture & Decorations  
European Works of Art
- 6–7 The Girardet Collection of Finest & Rarest Wines
- 7 The Russian Sale  
Sculpture  
Rugs & Carpets
- 8 Fine Jewels  
Russian Paintings & Works of Art
- 13–14 The Library of Peter Hopkirk: Books on the Middle East & Central Asia
- 14 Fine Oriental & European Rugs & Carpets  
Fine & Rare Wine, Spirits & Vintage Port
- 15 Arts of the Islamic World (including Islamic & Medieval Manuscripts)  
Travel Books & Maps, including the Near & Middle East  
Islamic Art & Indian Paintings  
Jewels
- 15–16 Coins, Medals & Banknotes
- 16 The Turkish Sale
- 21 Impressionist & Modern Art & Ceramics  
including Set & Costume Designs by Fernand Léger from the Collection of Pierre Cardin  
Old Master, 19th & 20th Century & Contemporary Prints  
Novelty Toys
- 22 Contemporary Art  
The Stanley Smith Collection of Important Natural History Books: Birds, Flowers & Orchids  
Silver & Vertu
- 28 Fine Instruments of Science & Technology  
British Paintings  
Applied Arts
- 29 Old Master Paintings
- 30 Applied Arts from 1880



## NOVEMBER

- 3 Scientific Books from the Library of a Gentleman Furniture
- 4 Early Musical Instruments Rugs & Carpets
- 5 19th Century Paintings
- 10-11 Illustrated & Children's Books
- 11 Victorian Pictures Burne-Jones & His Circle Fine & Rare Wines, Spirits & Vintage Port
- 12 Silver, Portrait Miniatures & Objects of Vertu British Fantasy Art & Illustrations Important Dolls, Automata, Toys, Trains & Chess Sets Jewels
- 13 Important English Furniture
- 16-18 Asian Art in London
- 17 Musical Instruments Chinese Works of Art & Snuff Bottles Japanese Works of Art
- 18 Chinese Export Porcelain & Works of Art Fine Chinese Ceramics & Works of Art Japanese Works of Art, Prints & Paintings
- 20 Period & Contemporary Motor Cars
- 23 A Private Collection of European Porcelain European Ceramics
- 24 Fine Early & Later European Ceramics Enid Blyton: Noddy Part II Single-owner Wine Sale Passion For Fashion
- 25 The Racing Sale
- 26 19th & 20th Century Sculpture
- 26-27 General Printed Books & Maps

## New York

1334 York Avenue,  
New York NY 10021  
Tel: 212 606 7000  
Viewing Monday-Saturday  
10am-5pm  
Sunday 1pm-5pm  
Auction Enquiries  
Tel: 212 606 7010  
24-hour Recorded  
Information  
Tel: 212 606 7909  
Faxed Auction Results  
Tel: 212 606 7960

## SEPTEMBER

- 10-11 Arcade Auction: Silver, Decorations, French & Continental Furniture, Rugs & Carpets
- 14-19 Asia Week
- 14 Fine Chinese Paintings & Calligraphy
- 15 The Neal W. & Frances R. Hunter Collection of Fine Chinese Snuff Bottles
- 16-17 Indian & Southeast Asian Art including Modern & Contemporary Indian Paintings
- 17 Fine Chinese Ceramics, Furniture & Works of Art
- 18 Japanese Works of Art Japanese Works of Art from the Collection of the Late Charles A. Greenfield
- 19 Arcade Auction: Along the Silk Road
- 22 United States & Foreign Stamps & Covers
- 23 European Works of Art, Arms & Armour, Furniture & Tapestries
- 24 Arcade Auction: American Paintings, Drawings & Sculpture
- 25 Continental Furniture, Decorations & Carpets
- 26 Sherry-Lehmann with Sotheby's Finest & Rarest Wines Property from the Collection of the late Dorothy Hirshon



**Oak and Country Furniture**  
Sussex,  
**Tuesday 15th September 1998**  
Enquiries: 01403 833 555

A small mid 18th-century oak bureau, estimate: £700-1,000 (\$1,100-1,600); an early 17th-century Flemish tapestry covered screen; estimate: £1,000-1,500 (\$1,600-2,400); a mid 19th-century yew wood, ash and elm, Windsor armchair, estimate: £600-800 (\$1,000-1,300)



**British Pottery and Porcelain**  
Sussex, Wednesday 16th September 1998  
Enquiries: 01403 833 542

Pilkington's Royal Lancastrian pottery wares from 1906-28, estimates range from £150-250 (\$250-400) to £500-800 (\$800-1,300).



**Jewels**  
London, Thursday 17th  
September 1998  
Enquiries: 0171 293 5307

A ruby and diamond brooch by Tiffany & Co.  
Estimate: £1,500-2,000 (\$2,500-3,200)



# Highlights & Auction Calendar



**Garden Statuary**  
Sussex, Tuesday 22nd  
September 1998  
Enquiries: 01403 833 560

A pair of carved stone allegorical groups of putti in the style of Jan Pieter van Bauerscheit, Low Countries, early 18th century.  
Estimate: £10,000–15,000  
(\$15,000–25,000)



**Clocks, Watches, Wristwatches, Barometers & Mechanical Musical Instruments**  
London, Thursday 1st October 1998  
Enquiries: 0171 293 5810

A silver and fishskin pair cased verge calendar watch with the coat of arms of Oliver Cromwell, Henry Harpur, London *circa* 1665–70. Estimate: £8,000–12,000 (\$13,000–20,000). An early triple colour gold musical automaton virgule watch, Pierre Morand, *circa* 1783–89. Estimate: £20,000–25,000 (\$30,000–40,000)

## OCTOBER

- 1 Fine Oriental & European Carpets including the Sailer Collection
- 6 Impressionist, Modern & Contemporary Art
- 7 Photographs
- 8 Arcade Auction: Impressionist, Modern & Contemporary Art
- 9-10 Fine Americana
- 14 Old Master Paintings
- 15 Arcade Auction: Silver, Decorations, American & English Furniture, Rugs & Carpets
- 19 Jewels from the Estate of Betsy Cushing Whitney
- 19-20 Magnificent Jewels
- 21 Important English & Continental Silver & Silver-Gilt including the Collection of Francis E. Fowler III
- 21-22 Arcade Auction: Jewels
- 23 Important English Furniture, European Ceramics & Decorations
- 24 Savannah Style: The Ira & Nancy Koger Collection, including the Property of Woodcock-Koger Corporation

## OCTOBER

- 23 Important English Furniture, European Ceramics & Decorations
- 24 Savannah Style: The Ira & Nancy Koger Collection, including the Property of Woodcock-Koger Corporation
- 26 Fine Manuscripts & Printed Americana
- 27 Important Watches, Wristwatches & Clocks
- 28 19th Century Furniture
- 29-30 19th & 20th Century Prints
- 31 Contemporary Prints

## NOVEMBER

- 2 An Important Private Collection of Byzantine Coins
- 5 Highly Important Continental Furniture & Decorations
- 9 Fine 19th Century European Paintings, Drawings & Sculpture
- 10 Important 19th Century European Paintings, Drawings & Sculpture

- 16 Impressionist & Modern Art, Part I
- 17 Impressionist & Modern Art, Part II
- Contemporary Art, Part I
- 18 Contemporary Art, Part II
- 20-21 Sherry-Lehmann with Sotheby's Finest & Rarest Wines
- 22 Important African & Oceanic Art
- 23 Pre-Columbian Art
- 23-24 Latin American Art

## Chicago

215 West Ohio Street,  
Chicago, IL 60610  
Tel: 312 670 0010

## SEPTEMBER

- 13-14 Marketplace: Furniture, Decorations, Jewels & Fine Art
- 28 Fine Jewels & Watches

## OCTOBER

- 18 Centuries of Style II: Furniture, Decorations & Fine Art

## NOVEMBER

- 8 20th Century Sale: Furniture, Decorations & Modern & Contemporary Art

## Los Angeles

9665 Wilshire Blvd,  
Beverly Hills, CA 90212  
Tel: (310) 274 0340

## OCTOBER

- 24 Wine

## NOVEMBER

- 3 Fine Jewels & Watches

## Amsterdam

Rokin 102,  
1012 KZ Amsterdam  
Tel: 31 20 550 2200

## SEPTEMBER

- 8 Autumn Paintings Sale
- 15 Fine Jewellery

## OCTOBER

- 14 European Ceramics, Delftware & Glass



- 15 Furniture & Good Decorations
- 26 19th Century European Paintings & Watercolours

#### NOVEMBER

- 3 Clocks, Watches & Wristwatches
- 10 Old Master Paintings  
Dutch & Flemish  
Old Master Drawings
- 23 Dutch & European Silver
- 24 Fine Jewellery
- 30 Modern & Contemporary Art

### Cape Town

86 Hout Street,  
Cape Town 8001  
Tel: 27 21 23 47 28

#### OCTOBER

- 20-21 Decorative & Fine Arts

### Geneva

at the Hotel Beau Rivage  
13 Quai du Mont Blanc,  
1201 Geneva  
Tel: 41 22 908 4800

#### NOVEMBER

- 16 Silver
- 17 Gold Boxes, Objects of Vertu, Russian Works of Art & Fabergé  
Clocks & Watches
- 19 Magnificent Jewels  
A Century of Style
- 20 Magnificent Motor Cars

### Hong Kong

Level 18, Li Po Chun  
Chambers, 189 Des Voeux  
Road Central, Hong Kong  
Tel: (852) 2524 8121

#### NOVEMBER

- 1 Fine Modern & Contemporary Chinese Paintings  
Fine & Rare Wines
- 2 Fine Chinese Ceramics,  
Works of Art & Jade  
Carvings  
Fine Chinese Snuff Bottles
- 3 Important Watches & Wristwatches

Magnificent Jadeite Jewels  
Important Jewels

- 12 Beckman Collection of  
Stamps from China  
Postage Stamps of China  
& Hong Kong

### Johannesburg

13 Biermann Avenue,  
Rosebank,  
Johannesburg 2196  
Tel: 27 11 880 3125/9

#### SEPTEMBER

- 7-8 Decorative Arts & Collectors' Items

#### OCTOBER

- 24 Postage Stamps & Postal History

#### NOVEMBER

- 9 South African, British & Continental Paintings,  
Drawings, Watercolours,  
Prints & Sculpture
- 23-24 Decorative Arts & Collectors' Items

### Madrid

Plaza de la Independencia  
8, 28001 Madrid  
Tel: 349 (1) 552 2902

#### NOVEMBER

- 19 Old Master/19th & 20th  
Century Paintings

### Melbourne

926 High Street,  
Armada, Melbourne,  
Victoria 3143  
Tel: 61 (3) 9509 2900

#### AUGUST

- 25-26 Fine Australian & European Paintings,  
Sculpture, Drawings  
& Prints

#### NOVEMBER

- 8 Jewellery, Clocks, Watches  
& Objects of Vertu
- 9 The Interior Decorator  
& Avant-Garde Design
- 10 Decorative Arts, Antiques  
& Oriental Art including  
The Colonial Sale



#### Fine Jewels and Watches

Singapore, Sunday 4th October 1998

Enquiries: 65 732 8239

An 18-carat gold and diamond brooch,  
Gianmaria Buccellati.

Estimate: S\$3,400–4,400 (£1,200–1,500; \$2,000–2,500)



#### Old Master Paintings

New York, Wednesday 14th October 1998

Enquiries: 212 606 7230

Willem Verschuring (1657–1715), *A Young Lady Listening to a Violinist*, monogrammed and dated W.VS 1685, oil on canvas.

Estimate: \$6,000–8,000 (£3,500–5,000)

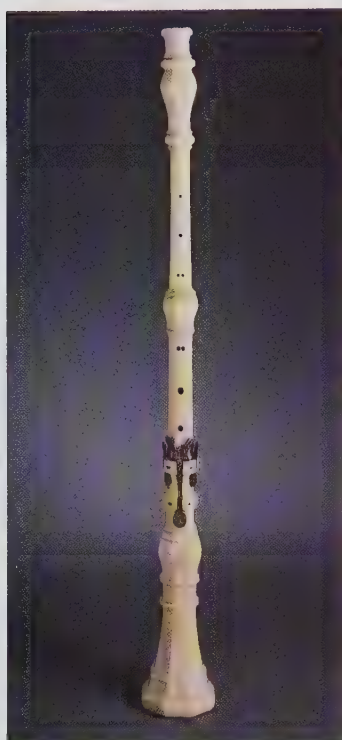


# Highlights & Auction Calendar

## Musical Instruments

**Milan,**  
**Tuesday 22nd October 1998**  
**Enquiries: (London)**  
**0171 293 5343 or**  
**(Milan) 39 (2) 2950 0220**

A three-keyed ivory oboe,  
 Milan, 1722, by Giovanni  
 Maria Anciuti (*circa* 1709–40).  
 Estimate upon request



## Decorative and Fine Arts

**Cape Town,**  
**Tuesday 20th and Wednesday**  
**21st October 1998**  
**Enquiries: 27 (21) 234 728**

Irma Stern (1894–1966), *Still*  
*life of a bowl of peaches*, oil on  
 board, signed and dated 1935.  
 Estimate: SA Rand 80,000–  
 100,000 (£8,000–10,000;  
 \$13,000–16,000)



## Fine Instruments of Science and Technology

**London, Wednesday 28th**  
**October 1998**  
**Enquiries: 0171 293 5205**  
**or 5209**

An Edmund Culpeper  
 compound monocular  
 microscope, English, *circa*  
 1730, with case, signed on the  
 trade label *E Culpeper Sculp.*  
*London*. Estimate: £10,000–  
 15,000 (\$16,000–24,000)



**24-25** Fine Australian &  
 European Paintings,  
 Sculpture, Drawings  
 & Prints

## Milan

Palazzo Broggi,  
 Via Broggi 19, 20129 Milan  
 Tel: 39 (2) 295 001

## OCTOBER

**22** Musical Instruments

## NOVEMBER

**11-13** Books / Prints

**24-25** Modern &  
 Contemporary Drawings

## Singapore

1 Cuscaden Road,  
 #01-01 The Regent,  
 Singapore 249715.  
 Tel: (65) 732 8239

## OCTOBER

**3** Southeast Asian Paintings

**4** Fine Jewels & Watches

## Sydney

118-122 Queen St,  
 Woollahra NSW 2025  
 Tel: 61 (2) 9362 1000

## NOVEMBER

**9** Aboriginal & Oceanic  
 Art & Artefacts

## Taipei

1/F. No. 79. Sec. 1  
 An Ho Road  
 Taipei, Taiwan  
 Tel: (886 2) 2755 2906

## OCTOBER

**18** Trees of Life:  
 The World of Hong Tong  
 In Memory of Formosa:  
 Important Works by Xi  
 Dejin

Special Sale of Oil Paintings  
 by Ding Yanyong –  
 The Great Master

Fine Modern Chinese  
 Oil Paintings, Drawings,  
 Watercolours &  
 Sculpture

## Tel Aviv

46 Rothschild Blvd,  
 Tel Aviv  
 Tel: 972 3 5601666

## OCTOBER

**8** Israeli & International Art

## UK Regional Calendar

Summers Place,  
 Billingshurst,  
 West Sussex RH14 9AD  
 Tel: 01403 833500

## SEPTEMBER

**2** European Ceramics  
 & Glass

**3** Antique & Decorative  
 Furniture

**8** Paintings, Prints &  
 Picture Frames

**15** Oak & Country  
 Furniture, Textiles, Treen,  
 Pewter, Metalwork &  
 Works of Art

**16** British Pottery &  
 Porcelain

**22** Garden Statuary, Chimney  
 Pieces & Architectural  
 Items

**23** Toys & Dolls

**29** Antique & Decorative  
 Furniture & Oriental  
 Rugs

**30** Oriental Ceramics &  
 Works of Art

## OCTOBER

**6** Oil Paintings &  
 Watercolours

**7** Silver & Allied Wares  
 Portrait Miniatures, Fans,  
 Canes & Vertu

**13** Selected English Furniture  
 Bronzes & Works of Art

**14** Clocks & Watches

**19** The Dining Room:  
 Furniture, Works of Art,  
 Silver & Ceramics

**20** Selected Paintings  
 to include Southern Views

**27** Antique & Decorative  
 Furniture  
 Oriental Rugs

**28** European Ceramics  
 & Glass



## NOVEMBER

- 3** Oil Paintings & Watercolours
- 10** Aeronautica  
Militaria
- 11** Fine Sporting Guns & Rifles
- 17** Continental Furniture & Works of Art  
Oriental Rugs
- 18** Continental Ceramics
- 24** Primitive Pictures  
Oak & Country  
Furniture, Textiles, Treen & Works of Art  
Pewter, Metalwork & Works of Art
- 25** British Pottery & Porcelain

## Gleneagles

Gleneagles Hotel,  
Auchterarder,  
Perthshire, PH3 1HF  
Tel: (London)  
0171 293 5000

## AUGUST

- 31** Fine Sporting Guns & Rifles

## SEPTEMBER

- 1** Jewellery, Silver, Wemyss Ware, Animalier & Scottish Sculpture
- 2** Scottish & Sporting Pictures

## Country House Sales

### SEPTEMBER

- 15** Derwydd Mansion,  
Llandeilo, Carmarthenshire  
Tel: (London) 0171 293 5055 or (Cheltenham) 01424 510500
- 28-29** Noseley Hall,  
Billesdon, Leicestershire  
Tel: (London) 0171 293 5405 or (Newmarket) 01789 751666

## Sotheby's Institute

### Extra Mural Course Dates

#### New York

1334 York Avenue, New York,  
NY 10021 212 606 7822

### LECTURE SERIES

#### September – November

American Furniture  
American Paintings

### VINTAGE EVENINGS AT SOTHEBY'S

#### 22 September

Caymus Vineyards Special Selection  
Cabernet Sauvignon

#### 24 September

New York Style Through Furniture,  
Silver and Prints

#### 21 October

The Koger Collection: Savannah Style

### REGIONAL PROGRAMME

#### 16 October

A Primer of Historic Interpretation:  
Restoration, Reconstructing and  
Refurbishing Stratford Hall,  
Montrose, Virginia

#### Date TBA

Hillstead Museum, Farmington,  
Connecticut

### OTHER EVENTS

#### 20 November

Tribal Art Symposium

#### London

30 Oxford Street, London  
WIN 9FL 0171 462 3232

### EVENING CLASSES

#### 28 September – 30 November

English Furniture 1600–1700  
(Term 1 of 3)  
Discovering Drawings & Prints

#### 29 September – 1 December

Silver Studies (Term 1 of 2)  
Continental Furniture  
1500–1750 (Term 1 of 2)  
Fashion & Society – From the  
Sun King to Schiaparelli

#### 30 September – 2 December

A Century of Design  
1860–1960 (Term 1 of 3)

#### 30 September – 16 December

Carpets, Textiles & Tapestries

#### 5 October – 7 December

Looking at Sculpture  
Collecting Oriental Ceramics

#### 7 October – 9 December

Dreams and Realities: Painting  
in Victorian Britain

### OTHER EVENTS

#### 10 – 12 November

Jewellery Seminar (Geneva)

#### 14 – 17 November

Jewellery Lecture Series (Geneva)

#### 11 – 13 November

The China Circle Seminar



### Old Master Paintings

London, Thursday 29th October 1998

Enquiries: 0171 293 6414

Frans Francken the Younger (1578–1628), *The Meeting of Solomon and the Queen of Sheba*, signed, oil on prepared panel.

Estimate: £15,000–20,000 (\$25,000–30,000)



### Important 19th Century European Paintings, Drawings and Sculpture

New York, Tuesday 10th November 1998

Enquiries: 212 606 7140

Sir Lawrence Alma-Tadema OM RA (1836–1912), *A Love Missile*, signed and inscribed, oil on panel.

Estimate: \$250,000–350,000 (£150,000–210,000)



# Principal Offices Worldwide

Each principal office can give details of Sotheby's representatives and consultants that additionally cover each country

## United States

1334 York Avenue,  
New York, N.Y. 10021  
Tel: (212) 606 7000  
Fax: (212) 606 7107

## Beverly Hills

9665 Wilshire Blvd.,  
Beverly Hills,  
California 90212  
Tel: (310) 274 0340

## Chicago

215 West Ohio Street,  
Chicago, Illinois 60610  
Tel: (312) 670 0010

## Miami

Douglas Entrance,  
800 Douglas Road,  
Suite 125, Coral  
Gables, Florida 33134  
Tel: (305) 448 7882

## Minneapolis/ St. Paul

2030 Foshay Tower,  
821 Marquette Ave.,  
Minneapolis,  
MN 55402  
Tel: (612) 332 8938

## New England

671 Chestnut Street,  
Boston,  
Massachusetts 02108  
Tel: (617) 367 6323

## Palm Beach

225 Peruvian Avenue,  
Palm Beach,  
Florida 33480  
Tel: (561) 833 2582

## Philadelphia

1831 Chestnut Street,  
Suite 601, Philadelphia,  
Pennsylvania 19103  
Tel: (215) 751 9540

## San Francisco

214 Grant Avenue,  
Suite 350,  
San Francisco,  
California 94108  
Tel: (415) 772 9028

## Washington, D.C.

2201 Wisconsin  
Avenue, N.W., Suite  
390, Washington,  
D.C. 20007  
Tel: (202) 457 1910

## Canada

### Toronto

9 Hazelton Avenue  
Toronto, Ontario  
M5R 2E1  
Tel: (416) 926 1774

## UK & Ireland

### London Saleroom

34-35 New Bond Street,  
London W1A 2AA  
Tel: (0171) 293 5000  
Fax: (0171) 293 5989

### Sussex Saleroom

Summers Place,  
Billingshurst,  
Sussex RH14 9AD  
Tel: (01403) 833500

### The Midlands, Wales & South West

18 Imperial Square,  
Cheltenham,  
Gloucestershire  
GL50 1QZ  
Tel: (01242) 510500

### Wessex

Cheviot House,  
69-73 Castle Street,  
Salisbury, Wiltshire  
SP1 3SP  
Tel: (01722) 330793

### East Midlands

The George Hotel  
Mews, Station Road,  
Stamford,  
Lincolnshire PE9 2LB  
Tel: (01780) 51666

### East Anglia

The Railway Station,  
Green Road,  
Newmarket,  
Suffolk CB8 9BA  
Tel: (01638) 561426

### Home Counties

34-35 New Bond Street,  
London W1A 2AA  
Tel: (0171) 293 5897

### North West

Lightfoot Street,  
Hoole, Chester,  
Cheshire CH2 3AD  
Tel: (01244) 315531

### Yorkshire

8-12 Montpelier  
Parade, Harrogate,  
North Yorks HG1 2TJ  
Tel: (01423) 501466

## Scotland & Border Counties

112 George Street,  
Edinburgh EH2 4LH  
Tel: (0131) 226 7201

30 Douglas Street,  
Glasgow G2 4HF  
Tel: (0141) 221 4817

11 Osborne Terrace,  
Jesmond, Newcastle-upon-Tyne NE2 1NE  
Tel: (0191) 281 8867

## Ireland

The Estate Office,  
Grey Abbey,  
Newtownards,  
Co. Down. Tel: (012477)  
88666/88668

51b Dawson Street,  
Dublin 2.  
Tel: 353 (1) 6711786

## Channel Islands

Bailiwick of Guernsey  
Tel: (01481) 715415

## Europe

### Austria

Palais Breuner,  
Singerstr. 16,  
1010 Vienna  
Tel: 43 (1) 512 4772/3

### Belgium

32 Rue Jacques  
Jordaens, 1050 Brussels  
Tel: 32 (2) 648 00 80

### Cyprus

15 Them Dervis Str.,  
PO Box 1139,  
Nicosia  
Tel: 357 (2) 461410

### Czech Republic

Mala Stupartska 5,  
110 00 Prague 1  
Tel: 42 (2) 2482 6538

### Denmark

Bredgade 6, 1260  
Copenhagen K  
Tel: 45 (33) 135556

### Finland

Fabianinkatu 14 A,  
00100 Helsinki  
Tel: 358 (0) 6221558

### France

76 rue du Faubourg  
Saint-Honoré,  
75008 Paris  
Tel: 33 (1) 5305 5305

## Germany

Odeonsplatz 16,  
80539 Munich  
Tel: 49 (89) 291 3151

St. Aperi-Strasse  
17-21 D50667 Cologne  
Tel: 49 (221) 257 4956

## Greece

5 Them Dervis Str.,  
PO Box 1139,  
Nicosia, Cyprus  
Tel: 357 (2) 461410

## Holland

102 Rokin,  
1012 KZ Amsterdam  
Tel: 31 (20) 550 2200

## Iceland

1 Hofsvallagata,  
101 Reykjavik  
Tel: 354 (55) 20437

## Italy

Via Broggi 19,  
20129 Milan  
Tel: 39 (02) 295001

Piazza di Spagna 90,  
00186 Rome  
Tel: 39 (06) 678 1798  
& 39 (06) 699 41791

## Monaco

BP 45, Le Sporting  
d'Hiver, Place du  
Casino, MC 98001  
Tel: 377 (93) 30 88 80

## Norway

Bjornveien 42,  
0387 Oslo 3  
Tel: 47 (22) 1472 82

## Spain

Plaza de la  
Independencia 8,  
28001 Madrid  
Tel: 34 (91) 522 2902

## Sweden

Arsenalsgatan 6,  
111 47 Stockholm  
Tel: 46 (8) 679 5478/9

## Switzerland

13 quai du Mont Blanc,  
CH-1201 Geneva  
Tel: 41 (22) 908 4800

Piazza Riforma,  
CH-6900 Lugano  
Tel: 41 (91) 923 8562

20 Bleicherweg,  
CH-8022 Zurich  
Tel: 41 (1) 202 0011

## Middle East

### Israel

46 Rothschild Blvd.,  
Tel Aviv  
Tel: 972 (3) 560 1666

### Syria & Jordan

P.O. Box 2011,  
Damascus, Syria  
Tel: 963 (11) 429 502

## Asia

### China

The Shanghai Hilton,  
250 Hua Shan Road,  
Shanghai 200040  
Tel: 86 (21) 248 0000  
Ext. 723

### Hong Kong

Level 18, Li Po Chun  
Chambers,  
189 Des Voeux Road,  
Central, Hong Kong  
Tel: (852) 2524 8121

### India

213 Jor Bagh,  
New Delhi 110003  
Tel: 91 (11) 463 8385

12 Juhu Ajanta,  
Gulmohar Road  
J.V.P.D. Scheme,  
Bombay 400 049  
Tel: 91 (22) 620 2321

### Indonesia

Subentra Bldg 8th  
Floor, Jl Gatot Subroto  
Kav 21, Jakarta 12930  
Tel: 62 21 522 0156

### Japan

Fuerte Kojimachi Bldg.  
3F, 1-7 Kojimachi,  
Chiyoda-ku, Tokyo 102  
Tel: 81 (3) 3230 2755

### Korea

Shinyoung Gikum  
Bldg. 2F, 192-11  
Kwanhoon-Dong,  
Jongro-Gu,  
Seoul 110-300  
Tel: 82 (2) 733 5733

### Malaysia

25 Jalan Pudu Lama,  
50200 Kuala Lumpur  
Tel: 6 (03) 230 0319

### Singapore

1 Cuscaden Road,  
#01-01, The Regent  
Singapore 1024  
Tel: (65) 732 8239

## Taiwan, ROC

1st floor, No. 79,  
Sec. 1, An Ho Road,  
Taipei  
Tel: 886 (2) 755 2906

## Thailand

6th floor, Rajapark  
Building, 163 Asoke  
Road, Sukhumvit 21,  
Bangkok 10110  
Tel: 66 (2) 611 1064

## Latin America

### Argentina

Avenida Callao 1777  
(P.B.), 1024 Buenos  
Aires  
Tel: (541) 811 2965

### Brazil

Caixa Postal 62519  
Rio de Janeiro RJ  
CEP 22250-970  
Tel: 55 (21) 551 6775

Rua João Cachoeira,  
267, São Paulo SP CEP  
04535-010  
Tel: 55 (11) 282 0066

### Mexico

Campos Eliseos 325-5  
Polanco  
Mexico DF 11560  
Tel: (525) 281 2100

### Venezuela

CCCT. la Etapa,  
Piso 3. Of. 312,  
Chua, Caracas 1060  
Tel: (582) 959 2249

## Australia

118-122 Queen St,  
Woollahra NSW 2025  
Tel: 61 (2) 9362 1000

926 High Street,  
Armada, Melbourne,  
Victoria 3143  
Tel: 61 (3) 9509 2900

## South Africa

Stephan Welz & Co.,  
13 Bierman Avenue,  
Rosebank,  
Johannesburg 2196  
Tel: 27 (11) 880 3125

86 Hout Street,  
Cape Town 8000  
Tel: 27 (21) 23 47 28



# Catalogue Order Form

To order catalogues for sales mentioned in this issue of *Preview* please indicate the catalogues required by circling the relevant price (includes postage), then complete the details overleaf and return to us with your payment.

## North America (US), Canada and Latin America (Can/Lat Am)

*Please write to:* Subscriptions Dept.,  
PO Box 5111, Norwalk, CT 06856 USA  
*or telephone:* (800) 444 3709 (within the USA)  
(203) 847 0465 (outside the USA)  
*or fax:* (203) 849 0223

## United Kingdom (UK) and Rest of the World (RoW)

*Please write to:* Sotheby's Catalogues,  
34-35 New Bond Street, London W1A 2AA  
*or telephone:* 0171 293 6444 (UK)  
+44 171 293 6444 (elsewhere)  
*or fax:* 0171 293 5909 (UK)  
+44 171 293 5909 (elsewhere)

## NEW YORK

1334 York Avenue, New York, NY 10021  
Telephone: 212 606 7000

Sale Title	Sale No	US	Can/Lat Am	UK	RoW
<b>Fine Chinese Paintings &amp; Calligraphy</b>					
14 September	N87179	\$27	\$35	£26	£26

### The Neal W. & Frances R. Hunter Collection of Fine Chinese Snuff Bottles

15 September	N87180	\$32	\$39	£24	£24
--------------	--------	------	------	-----	-----

### Indian & Southeast Asian Art including Modern & Contemporary Indian Paintings

16 & 17 September	N87181	\$37	\$45	£28	£28
-------------------	--------	------	------	-----	-----

### Fine Chinese Ceramics, Furniture & Works of Art

17 September	N87182	\$37	\$45	£28	£28
--------------	--------	------	------	-----	-----

### Japanese Works of Art

18 September	N87183	\$37	\$45	£28	£28
--------------	--------	------	------	-----	-----

### Japanese Works of Art from the Collection of the Late Charles A. Greenfield

18 September	N87184	\$34	\$41	£25	£25
--------------	--------	------	------	-----	-----

### European Works of Art, Arms & Armour, Furniture & Tapestries

23 September	N87185	\$37	\$45	£28	£28
--------------	--------	------	------	-----	-----

### Continental Furniture, Decorations & Carpets

25 September	N87186	\$42	\$49	£30	£30
--------------	--------	------	------	-----	-----

### Sherry Lehmann with Sotheby's Finest & Rarest Wines

26 September	N87187	\$18	\$23	£14	£14
--------------	--------	------	------	-----	-----

### Property from the Collection of the Late Dorothy Hirshon

26 September	N87188	\$35	\$42	£26	£26
--------------	--------	------	------	-----	-----

### Fine Oriental & European Carpets including the Sailer Collection

1 October	N87191	\$32	\$39	£24	£24
-----------	--------	------	------	-----	-----

### Photographs

7 October	N87194	\$32	\$39	£24	£24
-----------	--------	------	------	-----	-----

### Fine Americana

9 & 10 October	N87195	\$39	\$46	£28	£28
----------------	--------	------	------	-----	-----

Sale Title	Sale No	US	Can/Lat Am	UK	RoW
<b>Old Master Paintings</b>					
14 October	N87199	\$29	\$37	£23	£23

### Magnificent Jewels

19 & 20 October	N87203	\$39	\$46	£28	£28
-----------------	--------	------	------	-----	-----

### Important English & Continental Silver & Silver-Gilt, including the Collection of Francis E. Fowler III

21 October	N87204	\$32	\$39	£24	£24
------------	--------	------	------	-----	-----

### Important English Furniture, European Ceramics & Decorations

23 October	N87206	\$44	\$51	£31	£31
------------	--------	------	------	-----	-----

### Savannah Style: The Ira & Nancy Koger Collection, including the Property of Woodcock-Koger Corporation

24 October	N87207	\$34	\$41	£25	£25
------------	--------	------	------	-----	-----

### Important Watches, Wristwatches & Clocks

27 October	N87208	\$34	\$41	£25	£25
------------	--------	------	------	-----	-----

### Important 19th Century European Paintings, Drawings & Sculpture

10 November	N87215	\$49	\$56	£34	£34
-------------	--------	------	------	-----	-----

## LONDON

34-35 New Bond Street, London W1A 2AA  
Telephone: 0171 293 5000

Sale Title	Sale No	US	Can/Lat Am	UK	RoW
<b>Rock &amp; Roll Memorabilia</b>					
15 & 16 September	LN8527	\$34	\$34	£18	£21

### Jewels

17 September	LN8850	\$15	\$15	£8	£9
--------------	--------	------	------	----	----

### Film Posters & Memorabilia

17 September	LN8533	\$29	\$29	£16	£18
--------------	--------	------	------	-----	-----

### Fine English Furniture

25 September	LN8269	\$34	\$34	£18	£21
--------------	--------	------	------	-----	-----

### Modern British & Irish Paintings, Drawings & Sculpture

30 September	LN8588	\$26	\$26	£14	£16
--------------	--------	------	------	-----	-----

### The John Napper Studio Sale

30 September	LN8591	\$26	\$26	£14	£16
--------------	--------	------	------	-----	-----

### Important Clocks, Watches, Wristwatches, Barometers & Mechanical Musical Instruments

1 October	LN8592	\$26	\$26	£14	£16
-----------	--------	------	------	-----	-----

### 19th & 20th Century Furniture & Decorations, Belle Époque Series

2 October	LN8601	\$34	\$34	£18	£21
-----------	--------	------	------	-----	-----

### The Girardet Collection of Finest & Rarest Wines

6 & 7 October	LN8559	\$23	\$23	£12	£14
---------------	--------	------	------	-----	-----

### Fine Jewels

8 October	LN8623	\$29	\$29	£16	£18
-----------	--------	------	------	-----	-----

### The Library of Peter Hopkirk

13 & 14 October	LN8563	\$34	\$34	£18	£21
-----------------	--------	------	------	-----	-----

### Fine Oriental & European Rugs & Carpets

14 October	LN8605	\$26	\$26	£14	£16
------------	--------	------	------	-----	-----

### Arts of the Islamic World

15 October	LN8629	\$33	\$33	£18	£20
------------	--------	------	------	-----	-----

### The Turkish Sale

16 October	LN8612	\$33	\$33	£18	£20
------------	--------	------	------	-----	-----



# Catalogue Order Form

Sale Title                      Sale No                      US    Can/Lat Am    UK    RoW  
**Impressionist & Modern Art & Ceramics including Set & Costume Designs by Fernand Léger from the Collection of Pierre Cardin**  
 21 October                      LN8643                      \$34                      \$34                      £18                      £21

**Old Master, 19th & 20th Century & Contemporary Prints**  
 21 October                      LN8610                      \$26                      \$26                      £14                      £16

**Contemporary Art**  
 22 October                      LN8609                      \$34                      \$34                      £18                      £21

**The Stanley Smith Collection of Important Natural History Books**  
 22 October                      LN8611                      \$42                      \$42                      £24                      £26

**Fine Instruments of Science & Technology**  
 28 October                      LN8594                      \$23                      \$23                      £12                      £14

**Old Master Paintings**  
 29 October                      LN8618                      \$34                      \$34                      £18                      £21

**Applied Arts from 1880**  
 30 October                      LN8607                      \$23                      \$23                      £12                      £14

**The Racing Sale**  
 25 November                      LN8685                      \$34                      \$34                      £18                      £21

**GENEVA**  
 at 13 Quai du Mont Blanc, CH 1201 Geneva Telephone: 41 21 23 4728

Sale Title                      Sale No                      US    Can/Lat Am    UK    RoW  
**Magnificent Jewels**  
 19 November                      GE0234                      \$34                      \$34                      £21                      £21

## I would like to order the catalogues indicated

Name: \_\_\_\_\_

Address: \_\_\_\_\_

Zip/Post Code: \_\_\_\_\_

Country: \_\_\_\_\_

Telephone: \_\_\_\_\_

Account or Client Card No: \_\_\_\_\_

[ ] I enclose a cheque for \$/£ \_\_\_\_\_  
 made payable to Sotheby's

OR Please charge my:

[ ] Visa

[ ] Master Card

[ ] American Express

Card Number: \_\_\_\_\_

Expiry date: \_\_\_\_\_

Signature: \_\_\_\_\_

Date: \_\_\_\_\_

Please send this form to the relevant address for  
 Sotheby's Catalogues printed overleaf.

## MILAN

Palazzo Broggi, Via Broggi 19, 20129 Milan Telephone: 39 (2) 295 001

Sale Title                      Sale No                      US    Can/Lat Am    UK    RoW  
**Musical Instruments**  
 22 October                      MI0145                      \$20                      \$20                      £12                      £12

## SINGAPORE

1 Cuscaden Road, #01-01 The Regent, Singapore, 249715  
 Telephone: (65) 732 8239

Sale Title                      Sale No                      US    Can/Lat Am    UK    RoW  
**Southeast Asian Paintings**  
 3 October                      SG7005                      \$35                      \$35                      £25                      £25

**Fine Jewels & Watches**  
 4 October                      SG7006                      \$35                      \$35                      £25                      £25

## TAIPEI

Far Eastern Plaza Hotel, Taipei, Taiwan Telephone: (886) 2378 8888

Sale Title                      Sale No                      US    Can/Lat Am    UK    RoW  
**Trees of Life: The World of Hong Tong**  
 18 October                      TW7008                      \$20                      \$20                      £18                      £18

**Fine Modern Chinese Oil Paintings, Drawings, Watercolours & Sculpture**  
 18 October                      TW7007                      \$30                      \$30                      £18                      £18

## TEL AVIV

46 Rothschild Blvd, Tel Aviv Telephone: (972) 3560 1666

Sale Title                      Sale No                      US    Can/Lat Am    UK    RoW  
**Israeli & International Art**  
 8 October                      TA0009                      \$20                      \$20                      £12                      £12

## UK REGIONAL SALES

Summers Place, Billingshurst, West Sussex, RH14 9AD  
 Telephone: 01403 833500

Sale Title                      Sale No                      US    Can/Lat Am    UK    RoW  
**Oak & Country Furniture, Textiles, Treen, Pewter, Metalwork & Works of Art**  
 15 September                      BH8078                      \$20                      \$20                      £11                      £12

**British Pottery & Porcelain**  
 16 September                      BH8078                      \$20                      \$20                      £11                      £12

**Garden Statuary, Chimney Pieces & Architectural Items**  
 22 September                      BH8080                      \$21                      \$21                      £12                      £13

**Selected Paintings to include Southern Views**  
 20 October                      BH8090                      \$20                      \$20                      £11                      £12

## GLENEAGLES

Gleneagles Hotel, Auchterarder, Perthshire, PH3 1HF  
 Telephone: (London) 0171 293 5000

Sale Title                      Sale No                      US    Can/Lat Am    UK    RoW  
**Jewellery, Silver, Wemyss Ware, Amalier & Scottish Sculpture**  
 1 September                      LN8468                      \$30                      \$30                      £16                      £18

**Scottish & Sporting Pictures**  
 2 September                      LN8468                      \$30                      \$30                      £16                      £18

## COUNTRY HOUSE SALES

Telephone: (London) 0171 293 5055 or 5405

Sale Title                      Sale No                      US    Can/Lat Am    UK    RoW  
**Derwydd Mansion, Llandeilo, Carmarthenshire**  
 15 September                      LN8541                      \$23                      \$23                      £12                      £14

**Noseley Hall, Billesdon, Leicestershire**  
 28 & 29 September                      LN8223                      \$34                      \$34                      £18                      £21



# Lombard Odier & Cie



## Harmony in the art of asset management

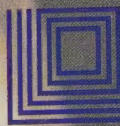
*Lombard Odier & Cie*



**Our first 200 years  
as private bankers**

11, rue de la Corraterie  
1204 Geneva - Switzerland

"Lombard Odier & Cie is not regulated in the United Kingdom. The protection provided by the UK regulatory system does not apply and compensation under the investors compensation scheme is not available. This advertisement has been approved for issue in the United Kingdom by Lombard Odier Private Asset Management Limited, regulated by IMRO"



**Lombard Odier**

*Worldwide*





# LE TEMPS CHANEL

NEW FROM THE MATELASSÉE COLLECTION  
POLISHED STAINLESS STEEL BRACELET WATCH. DIAMOND BEZEL, \$3,750. ALL STEEL, \$2,450.

AT CHANEL BOUTIQUES, SPECIALTY STORES AND FINE JEWELERS.

FOR INFORMATION ON CHANEL FINE TIMEPIECES, PLEASE CALL 800-550-0005