

The Dubai Sale
Jewels
& WATCHES
28 April 2009

CHRISTIE'S



The Dubai Sale
Jewels
& WATCHES
28 April 2009



CHRISTIE'S

INTERNATIONAL JEWELLERY AND WATCH AUCTIONS

AUCTION CALENDAR 2009

TO INCLUDE YOUR PROPERTY IN THESE SALES PLEASE CONSIGN TEN WEEKS BEFORE THE SALE DATE.
CONTACT THE SPECIALISTS OR REPRESENTATIVE OFFICE FOR FURTHER INFORMATION.

7 APRIL
JEWELS AT SOUTH KENSINGTON
LONDON

22 APRIL
THE NEW YORK SALE

28 APRIL
THE DUBAI SALE

29 APRIL
JEWELS AND WATCHES
AMSTERDAM

11 MAY
IMPORTANT POCKET WATCHES AND
WRISTWATCHES
GENEVA

13 MAY
THE GENEVA SALE

14 MAY
JEWELS AT SOUTH KENSINGTON
LONDON

26 MAY
THE HONG KONG SALE

27 MAY
MILAN JEWELS

27 MAY
IMPORTANT WATCHES
HONG KONG

10 JUNE
THE LONDON SALE

10 JUNE
IMPORTANT POCKET WATCHES AND
WRISTWATCHES
NEW YORK

11 JUNE
THE NEW YORK SALE

16 JUNE
JEWELS AT SOUTH KENSINGTON
LONDON

14 JULY
JEWELS AT SOUTH KENSINGTON
LONDON

8 SEPTEMBER
JEWELS AT SOUTH KENSINGTON
LONDON

6 OCTOBER
PARIS JEWELS

21 OCTOBER
THE NEW YORK SALE

27 OCTOBER
JEWELS AT SOUTH KENSINGTON
LONDON

27 OCTOBER
THE DUBAI SALE

3 NOVEMBER
JEWELS AND WATCHES
AMSTERDAM

16 NOVEMBER
IMPORTANT WATCHES
GENEVA

17 NOVEMBER
JEWELS AT SOUTH KENSINGTON
LONDON

18 NOVEMBER
THE GENEVA SALE

25 NOVEMBER
MILAN JEWELS

1 DECEMBER
THE HONG KONG SALE

3 DECEMBER
IMPORTANT WATCHES
HONG KONG

9 DECEMBER
THE LONDON SALE

9 DECEMBER
IMPORTANT WATCHES
NEW YORK

10 DECEMBER
THE NEW YORK SALE

15 DECEMBER
JEWELS AT SOUTH KENSINGTON
LONDON



Subject to change

11/03/09

JEWELS & WATCHES: THE DUBAI SALE

Tuesday 28 April 2009

AUCTION

Tuesday 28 April 2009
at precisely 7.00 pm (Lots 1-125)

PRE-SALE REFRESHMENTS

Tuesday 28 April 2009
6.00 - 7.00 pm

To be held at:

Jumeirah Emirates Towers Hotel, Godolphin Ballroom

Please note that refreshments will be served in the foyer throughout the sale

VIEWING

Jumeirah Emirates Towers Hotel, Godolphin Ballroom

Sunday	26 April	2.00 pm - 10.00 pm
Monday	27 April	2.00 pm - 10.00 pm
Tuesday	28 April	10.00 am - 4.30 pm

AUCTIONEERS

François Curiel, Rahul Kadakia

AUCTION CODE AND NUMBER

In sending absentee bids or making enquiries, this sale should be referred to as **SHINING STAR-7801**

AUCTION RESULTS

christies.com

CONDITIONS OF SALE

This auction is subject to Important Notices, Conditions of Sale and to reserves. This auction will be conducted in US Dollars.
[60]

This auction features

CHRISTIE'S LIVE™
Bid live in Christie's salerooms worldwide
register at www.christies.com

CHRISTIE'S

View catalogues and leave bids online at christies.com



CONTENTS

2	Calendar of Auctions
3	Auction Information
7	Specialists and Services for this Auction
8	Property for Sale
78	Index
79	Biographies
82	Colourless Diamond Index
83	Diamonds, The 4 C's
84	Ring Sizes
85	Important Notices and Explanation of Cataloguing Practice
87	Buying at Christie's
88	Storage and Collection
89	Conditions of Sale and Limited Warranty
91	Salerooms and Offices Worldwide
97	Absentee Bids Form
98	Catalogue Subscriptions

PAGE ONE:
Lot 98

OPPOSITE TITLE PAGE:
Lot 111

OPPOSITE:
Lot 119

FRONT COVER:
Lot 109

BACK COVER:
Lots 36

INSIDE FRONT COVER:
Lot 47

INSIDE BACK COVER:
Lot 49

BIOGRAPHY PAGE:
Lot 76

christies.com

5

INTERNATIONAL JEWELLERY AND WATCH DEPARTMENTS

INTERNATIONAL DIRECTOR

François Curiel
Tel: +41 (0)22 319 1700

INTERNATIONAL BUSINESS DIRECTOR

Myriam Christinaz
Tel: +41 (0)22 319 1732

BUSINESS DEVELOPMENT DIRECTOR

Natacha Vassiltchikov
Tel: +41 (0)22 319 1725

SENIOR EUROPEAN DIRECTOR

Raymond Sancroft-Baker
Tel: +44 (0)20 7389 2388

INTERNATIONAL SALES DIRECTOR

John Souglides
Tel: +44 (0)20 7389 2381

CLIENT DEVELOPMENT

Sarah O'Brien
(International Client Development
Director)
Tel: +44 (0)20 7389 2494

BUSINESS MANAGERS

AMERICAS

Sarah Cashin
Tel: +1 212 636 2300

ASIA

Ida Lee
Tel: +852 2978 9985

LONDON & DUBAI

Armelle de Laubier-Rhally
Tel: +44 (0)20 7389 2447

WORLDWIDE

AMSTERDAM

Jessica Koers
Daniel Girod
Tel: +31 (0)20 575 5915

BANGKOK

Yaovanee Nirandara (Liaison)
Tel: +66 2 652 1097

BARCELONA

Cuca Escoda (Liaison)
Tel: +34 (0)93 487 82 59

BERLIN

Frederik Schwarz
Tel: +49 (0) 175 524 4379

BOSTON

Susan Florence
Tel: +1 617 536 6000

CHICAGO

Tel: +1 312 787 2765

DUBAI

David Warren
(Senior International Specialist)
Tel: +44 (0)20 7389 2383

GENEVA

Eric Valdieu
Jean-Marc Lunel
Helen Molesworth
Tel: +41 (0)22 319 1730
Aurel Bacs (Watches)
Tel: +41 (0)22 319 1720

HONG KONG

Vickie Sek (Jewellery and Jadeite)
Karen Au Yeung
Tel: +852 2521 5396
Tim Bourne (Watches)
Tel: +852 2978 9940

JAKARTA

Tel: +62 (0)21 7278 6268

KUALA LUMPUR

Lim Meng Hong (Liaison)
Tel: +60 3 2070 8837

LONDON

KING STREET
Keith Penton
Tel: +44 (0)20 7389 2526

David Warren

(Senior International Specialist)
Tel: +44 (0)20 7389 2383

SOUTH KENSINGTON

Geoff Young
Tel: +44 (0)20 7752 3267

LOS ANGELES

Debbie Bloom
Elizabeth Irvine
Tel: +1 310 385 2666

MADRID

Maria Sempere
Tel: +34 (0) 91 532 6627

MILAN

Teresa Scarlata
Tel: +39 02 30 32 83 70

MUNICH

Uta Baroness Dalwigk-Machatus (Liaison)
Tel: +49 (0)89 2420 9680

NEW YORK

Rahul Kadakia
Daphne Lingon
Leslie Roskind

Maria Los, Sales Representative

Tel: +1 212 636 2300

Sam Hines (Watches)

Tel: +1 212 636 2608

PARIS

Marie-Laurence Tixier
Tel: +33 (0)1 40 76 85 81

ROME

Francesco Alverà
Tiziana Appetiti
Tel: +39 06 686 3340

SHANGHAI

Brenda Kang
Tel: +86 21 6279 8773

SINGAPORE

Wen Li Tang
Tel: +65 6235 3828

SYDNEY

Ronan Sulich
Tel: +61 (0) 2 9326 1422

TAIPEI

Ada Ong (Liaison)
Tel: +886 2 2736 3356

TOKYO

Kaori Yoshida (Liaison)
Tel: +81 (0)3 3571 0668

ZURICH

Marianne Trümpler (Liaison)
Tel: +41 (0)44 268 1016

11/03/09

6 Email. First initial followed by last name@christies.com
(eg. François Curiel = fcuriel@christies.com)

SPECIALISTS AND SERVICES FOR THIS AUCTION

SPECIALISTS

Jewels

David Warren
(International Director, in charge)
Tel: +44 (0)20 7389 2380
From 26-30 April
Tel: +971 (0)4 330 0913

Clocks and Watches

Tim Bourne
(International Director, in charge)
Tel: +852 2978 9940
From 26-30 April
Tel: +971 (0)4 330 0131

AUCTION ADMINISTRATOR AND CATALOGUER

Bryony Learmonth, F.G.A.
Tel: +44 (0)20 7389 2172
Fax: +44 (0)20 7389 2311
From 26-30 April
Tel: +971 (0)4 330 0913
Fax: +971 (0)4 319 8114

BUSINESS MANAGER

Armelle de Laubier-Rhally
Tel: +44 (0)20 7389 2381

GENERAL INFORMATION CHRISTIE'S DUBAI

Tel: +971 (0)4 425 5647
Fax: +971 (0)4 425 5639
From 26 - 30 April
Tel: +971 (0)4 330 0431
Fax: +971 (0)4 319 8114

REGARDING THE EXPORT OF WATCH BANDS INCORPORATING MATERIALS FROM ENDANGERED SPECIES

Each lot is marked with two asterisks (**) and will be sold without the strap unless the purchaser collects the watch himself / herself. Christie's will not ship these straps out of UAE.

For further information, please refer to the 'IMPORTANT NOTICES AND EXPLANATION OF CATALOGUING PRACTICE' on pages 85-86.

SALE CONTACTS

Michael Jeha
(Managing Director, Middle East)
Tel: +971 (0)4 425 5647
From 26-30 April
Tel: +971 (0)4 330 3464

Valérie Didier (Sale Manager)
Tel: +971 (0)4 425 5647
Fax: +971 (0)4 425 5639
From 26-30 April
Tel: +971 (0)4 330 0431
Fax: +971 (0)4 319 8114

Shanti Veigas
(Shipping Manager)
Tel: +971 (0)4 425 5647
Fax: +971 (0)4 425 5639
From 26-30 April
Tel: +971 (0)4 330 0431
Fax: +971 (0)4 319 8114

CLIENT CONTACTS & GENERAL ENQUIRIES

Isabelle de La Bruyère
(Director, Middle East)
Tel: +44 (0)7717 881 985
From 26-30 April
Tel: +971 (0)4 330 3464

Chaden Khoury
(Client Development & Event Manager,
Middle East)
Tel: +971 (0)4 425 5647
From 26-30 April
Tel: +971 (0)4 330 0431

IMPORTANT INFORMATION FOR BUYERS

*IMPORT DUTY

WATCHES, CLOCKS, LOOSE PEARLS AND SILVER BOXES
Watches, Clocks, loose Pearls and Silver Boxes offered for sale (identified with the symbol *) are subject to a 5% import duty on the importation value (low estimate) levied at the time of collection shipment within UAE.

It is the buyers' responsibility to ascertain and pay all taxes due. For more information, please contact Purchaser

Payments at:
+971 (0)4 425 5647
(from 26-30 April +971 (0)4 330 0431).

For further information on buying at Christie's please see page 87.

SERVICES

ABSENTEE AND TELEPHONE BIDS

Tel: +44 (0)20 7389 2658
Fax: +44 (0)20 7930 8870
Internet: www.christies.com
From 26-30 April
Tel: +971 (0)4 330 3462
Tel: +971 (0)4 330 3463
Fax: +971 (0)4 330 0739

CATALOGUES ONLINE

Lotfinder®
Internet: www.christies.com

PAYMENT FOR BUYERS

Tel: +971 (0)4 425 5647
Fax: +971 (0)4 425 5639
From 26-30 April
Tel: +971 (0)4 330 0740
Tel: +971 (0)4 330 0147
Fax: +971 (0)4 319 8113

PAYMENT FOR CONSIGNORS

Tel: +44 (0)20 7389 2587
Fax: +44 (0)20 7581 5295

STORAGE AND COLLECTION

Brinks Global Services FZE
Dubai Airport Free Zone
Warehouse C-6
Dubai UAE
Tel: +971 (0)4 299 6936
Mobile: +971 (0)50 652 4257
Fax: +971 (0)4 299 6946
Email: craig.cummings@brinksinc.com

AUCTION RESULTS

Internet: www.christies.com

EMAIL

First initial followed by last name@christies.com (e.g. David Warren = dwwarren@christies.com)

christies.com



1

***1**
CORUM, QUADRATUS

SET OF THREE PLATINUM AND GEM-SET AUTOMATIC CHRONOGRAPH WRISTWATCH WITH DATE DISPLAY MANUFACTURED IN 1990s

Mechanical movement, guilloché silvered dial with mother-of-pearl subdials and sector, small seconds, date display and power-reserve indicator, two-part case, *the first diamond-set, the second sapphire-set, and the third ruby-set*, case back fastened by eight screws, 18k white gold Corum buckle, *case, dial and movement signed*
Dimensions: 33 x 36 mm. (3)

US\$7,500-12,000

AED28,000-44,000

***2**
ETOILE, MAUBOUSSIN AND FRANCK MULLER

SET OF THREE WHITE GOLD QUARTZ WRISTWATCH AND BRACELET WATCHES MANUFACTURED IN 2000s

Etoile: quartz standardisation, mother-of-pearl dial, two-part case in 18k white gold, diamond-set bezel, 18k white gold and part diamond-set bracelet, *case signed*
Diameter: 19 mm.

Mauboussin: quartz standardisation, diamond-set and mother-of-pearl dial, three-part case in 18k white gold, diamond-set bezel, case back fastened by four screws, 18k white gold *Mauboussin* bracelet, *case and dial signed*
Diameter: 26 mm.

Franck Muller: quartz standardisation, diamond-set and mother-of-pearl dial, two-part case in 18k white gold, case back fastened by four screws, 18k white gold buckle, *case signed*
Dimensions: 22 x 29.5 mm. (3)

US\$4,000-6,000

AED 15,000-22,000



2

***3**
HUBLOT

SET OF THREE TITANIUM QUARTZ CHRONOGRAPH WRISTWATCH WITH DATE DISPLAY MANUFACTURED IN 1990s

Calibre 1270, quartz standardisation, 22 jewels, *the first: mother-of-pearl dial with light blue mother-of-pearl counters, second: matte black dial with mother-of-pearl counters, and the third: silvered with snailed black counters*, two-part case, case back fastened by six screws, titanium buckle, *case and dial signed*
Diameter: 36.5 mm. (3)

US\$2,000-3,000

AED7,400-11,000



3



4

*4
DELACOUR, GRAND CITY DUO

*4
DELACOUR, GRAND CITY DUO

PINK GOLD AND DIAMOND-SET AUTOMATIC DUAL TIME WRISTWATCH WITH DATE DISPLAY
NO. 100, CIRCA 2006

Mechanical movement, pave-set diamond dial with two time zones, date display, two-part case in 18k pink gold, diamond-set bezel, case back fastened by eight screws, 18k pink gold and diamond-set buckle, case, dial and movement signed
Dimensions: 49 x 45 mm.

US\$3,500-5,000

AED13,000-18,000

*5
ROGER DUBUIS, TOO MUCH

WHITE GOLD, DIAMOND AND RUBY-SET QUARTZ WRISTWATCH, LIMITED PRODUCTION OF 888
NO. 128/888, CIRCA 2004

Quartz standardisation, pave-set diamond and ruby dial, two-part case in 18k white gold with pave-set diamonds, case back fastened by eight screws, 18k white gold and diamond-set RD buckle, case signed
Dimensions: 30 x 31 mm.

US\$2,500-4,000

AED9,200-15,000



5

*6
DELACOUR, GRAND CITY DUO

WHITE GOLD AND DIAMOND-SET AUTOMATIC DUAL TIME WRISTWATCH WITH DATE DISPLAY
NO. 195, CIRCA 2006

Mechanical movement, pave-set diamond dial with two time zones, date display, two-part case in 18k white gold, diamond-set bezel, case back fastened by eight screws, 18k white gold and diamond-set buckle, case, dial and movement signed
Dimensions: 49 x 45 mm.

US\$3,500-5,000

AED13,000-18,000



6

*7

CARTIER, PENDULE MYSTÉRIEUSE PRISME

GOLD, SILVER, DIAMOND-SET AND LAPIS LAZULI
MINIATURE DESK CLOCK
NO. 582003, CIRCA 1970

Quartz standardisation, gilt dial, concealed in the base and visible through a series of crystal prisms, case with lapis lazuli panels and set with brilliant-cut diamonds, base plate in gold-plated silver, cabochon sapphire-set crown to the back, *case and dial signed*
Dimensions: 28 x 28 x 44 mm.

US\$8,000-12,000

AED30,000-44,000

With a *Cartier* protective case.



7



8

THE PROPERTY OF A PRIVATE COLLECTOR

*8

**AUDEMARS PIGUET, QUANTIÈME
PERPETUEL AUTOMATIQUE

YELLOW GOLD AUTOMATIC PERPETUAL CALENDAR
WRISTWATCH WITH MOON PHASE DISPLAY
NO. 2215, CIRCA 1993

Calibre 2120/2, 36 jewels, gloss porcelain-white dial, subdials for date, day, month, and age and phases of the moon, three-part case in 18k gold, snap on case back, 18k gold AP buckle, *case, dial and movement signed*
Diameter: 36 mm.

US\$6,000-8,000

AED23,000-29,000

10



9

THE PROPERTY OF A PRIVATE COLLECTOR

*9

**BREGUET, MARINE HORA MUNDI

YELLOW GOLD AUTOMATIC WORLD TIME WRISTWATCH WITH DATE DISPLAY
CASE 41711, CIRCA 2000

Calibre 563, 25 jewels, guilloché silvered gold dial, outer city ring, sweep centre seconds, date in aperture, three-part case in 18k gold, case back fastened by six screws, milled band, two superimposed winding crowns, 18k gold Breguet deployant clasp, case, dial and movement signed
Diameter: 38 mm.

US\$ 10,000-15,000

AED37,000-55,000

*10

**A. LANGE & SÖHNE, GRAND LANGE 1

YELLOW GOLD MANUALLY-WOUND WRISTWATCH WITH DATE DISPLAY AND POWER-RESERVE INDICATION
CASE 149518, MANUFACTURED IN 2008

Calibre L901.2, three-quarter plate, 53 jewels, 9 screwed gold chatons, twin mainspring barrels, matte two-tone solid silver dial, small seconds, power-reserve indicator, patented outsize date, three-part case in 18k gold, brushed and polished, transparent case back fastened by six screws, 18k gold Lange buckle, case, dial and movement signed
Diameter: 42 mm.

US\$ 10,000-15,000

AED37,000-55,000



10

*11

**BREGUET, TRADITION

YELLOW GOLD MANUALLY-WOUND WRISTWATCH WITH DUAL POWER-RESERVE INDICATION
CASE 3280 V, CIRCA 2005

Calibre 507DR, 24 jewels, monometallic balance with poising screws, off-centred guilloché silvered-gold dial, power reserve indicators above and underneath, three-part case in 18k gold, transparent snap on back, milled band, 18k gold Breguet buckle, case, dial and movement signed
Diameter: 38 mm.

US\$ 10,000-15,000

AED37,000-55,000



11



12

THE PROPERTY OF A PRIVATE COLLECTOR

*12

**RAYMOND WEIL, DON GIOVANNI COSI GRANDE

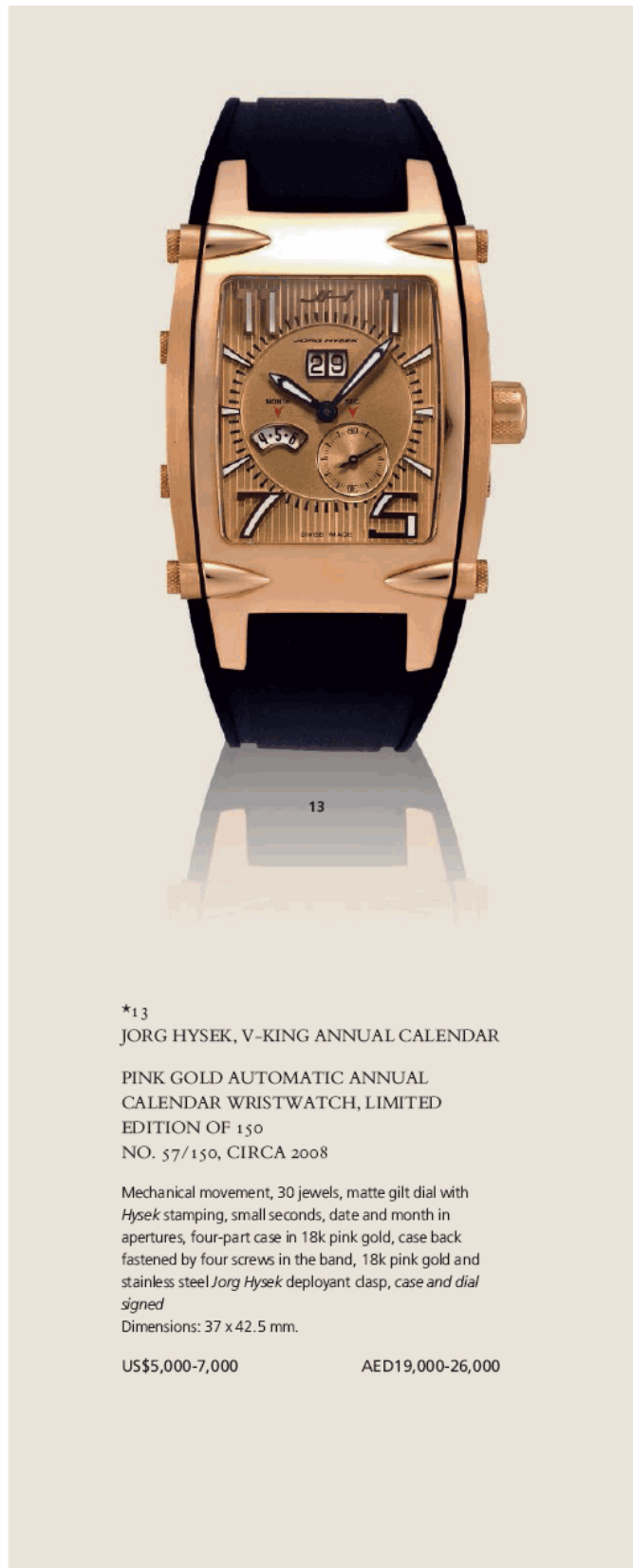
PINK GOLD AUTOMATIC DUAL TIME WRISTWATCH WITH DATE DISPLAY NO. 12898, CIRCA 2008

Calibre RW2200, 25 jewels, matte silvered dial with hobnail decorations, two separate time zone subdials, two-part case in 18k pink gold, brushed and polished, transparent case back fastened by four screws, two screw-down crowns, 18k pink gold *Raymond Weil* buckle, *case, dial and movement signed*

Dimension: 37.5 x 50 mm.

US\$3,000-4,000

AED12,000-15,000



13

*13

JORG HYSEK, V-KING ANNUAL CALENDAR

PINK GOLD AUTOMATIC ANNUAL CALENDAR WRISTWATCH, LIMITED EDITION OF 150 NO. 57/150, CIRCA 2008

Mechanical movement, 30 jewels, matte gilt dial with *Hysek* stamping, small seconds, date and month in apertures, four-part case in 18k pink gold, case back fastened by four screws in the band, 18k pink gold and stainless steel *Jorg Hysek* deployant clasp, *case and dial signed*

Dimensions: 37 x 42.5 mm.

US\$5,000-7,000

AED19,000-26,000



14

*14
**PATEK PHILIPPE, GONDOLO, REF. 5111J
YELLOW GOLD MANUALLY-WOUND
WRISTWATCH
MOVEMENT 1893133, CASE 4282212,
MANUFACTURED IN 2004

Calibre 215 PS, Geneva Seal hallmarked, matte silvery
grey dial, small seconds, two-part case in 18k gold, case
back fastened by four screws, 18k gold PFCo buckle,
case, dial and movement signed
Dimensions: 33 x 48 mm.

US\$7,000-10,000 AED26,000-37,000



15

*15
**PARMIGIANI, KALPA XL AUTOMATIC
GOLD

PINK GOLD AUTOMATIC WRISTWATCH
WITH
DATE DISPLAY
NO. 23361, CIRCA 2007

Calibre PF331.02, 32 jewels, double spring barrel, 22k
gold rotor, matte guilloché grey dial, sunken centrefield
with snailed small seconds, date in aperture, two-part
case in 18k pink gold, transparent back fastened by six
screws, 18k pink gold PF buckle, case, dial and
movement signed
Dimensions: 37.5 x 53 mm.

US\$7,000-10,000 AED26,000-37,000

VARIOUS PROPERTIES

*16

JAEGER-LECOULTRE, AMVOX₂ CHRONOGRAPH DBS

PINK GOLD AUTOMATIC SEMI-SKELETONISED WRISTWATCH WITH DATE DISPLAY AND VERTICAL-TRIGGER MECHANISM, LIMITED SERIES OF 300 NO. 129/300, MANUFACTURED IN 2008

Calibre 751E, 41 jewels, ruthenium-coloured bridges and mainplate, black openworked dial, chronograph seconds, minute and hour counters, date display, operating indicator, seven-part case in 18k pink gold, engraved case back fastened by ten screws, vertical trigger system in the band, 18k pink gold *JL* deployant clasp, case signed *JLC* and *Aston martin*, dial and movement signed *JLC*
Diameter: 44 mm.

US\$17,000-23,000

AED63,000-85,000

With *Jaeger-LeCoultre* presentation box and certificate.

THE PROPERTY OF A GENTLEMAN

*17

AUDEMARS PIGUET, ROYAL OAK OFFSHORE ALINGHI TEAM

AUTOMATIC FLYBACK CHRONOGRAPH WRISTWATCH WITH DATE AND REGATTA COUNTDOWN, CASE ENTIRELY OF FORGED CARBON, LIMITED EDITION OF 1,300 IN HONOUR OF ALINGHI TEAM'S NEW SAILBOAT FOR THE 32ND AMERICA'S CUP NO. 811/1300, MANUFACTURED IN 2007

Calibre 2326/2848, 50 jewels, variable inertia balance, black lacquered textured dial with "Mega Tapisserie" motif, minute and hour counters, regatta countdown in aperture, three-part case, engraved case back fastened by eight screws, ceramic chronograph pushers and crown, PVD-coated titanium buckle, case, dial and movement signed
Dimensions: 50 x 55.5 mm.

US\$20,000-30,000

AED74,000-110,000

*18

IWC, PILOT'S WATCH DOUBLE CHRONOGRAPH

CERAMIC AND TITANIUM AUTOMATIC SPLIT SECONDS CHRONOGRAPH WRISTWATCH WITH DAY AND DATE DISPLAY, LIMITED EDITION OF 1,000 CASE 3309687, MANUFACTURED IN 2006

Calibre 79230, matte black dial, small seconds, minute and hour counters, aperture for day and date, three-part case with soft-iron inner case, screw-down titanium case back with a plaque of the "TOP GUN" symbol, screw-in crown, titanium *IWC* buckle, case, dial and movement signed
Diameter: 46 mm.

US\$5,000-7,000

AED19,000-26,000

With an *IWC* certificate.





THE PROPERTY OF A COLLECTOR

*19

GIRARD-PERREGAUX, PIÈCE UNIQUE

PLATINUM MANUALLY-WOUND MINUTE REPEATING TOURBILLON
WRISTWATCH WITH ENAMEL DIAL
CIRCA 2000

Calibre 9892, 38 jewels, tourbillon regulator, finely engraved gold bridges, repeating on gongs via hammers, translucent zircon-blue enamel dial depicting a racing car over a prancing horse, three-part case, transparent case back inscribed *Girard Perregaux, Pièce unique*, secured by four screws, case, dial and movement signed
Diameter: 39 mm.

US\$40,000-60,000

AED 150,000-220,000



THE PROPERTY OF A GENTLEMAN

*20

**PARMIGIANI, BUGATTI TYPE 370

WHITE GOLD MANUALLY-WOUND 10-DAY-GOING SKELETONISED WRISTWATCH WITH TRANSVERSAL MOVEMENT AND POWER-RESERVE INDICATION, LIMITED EDITION OF 10
NO. 06/10, CASE 15966, CIRCA 2005

Calibre PF370.01, five-plated transversal movement, 37 jewels, two series-coupled barrels, power-reserve indicator on a rotating drum, black silvered gold dial with varnished applique in blue, eight-part form case in 18k white gold with six sapphire crystals, cambered and domed, case back with dynamometric system, time-setting and movement winding crowns, 18k white gold PF deployant clasp, case and dial signed PF and Bugatti, movement signed PF
Dimensions: 32.5 x 52.5 mm.; thickness: 18.5 mm.

US\$80,000-120,000

AED300,000-440,000

With Parmigiani presentation box, certificate, product literature and setting instrument.

The visual accessibility at the heart of the Bugatti Type 370 is entirely original and truly unique. The movement is spread between five plates, held by cross-arms arranged along a horizontal axis reminiscent of the construction of a Bugatti engine.

The dynamometric system - the movement's starting and winding systems, called for over three years of research and represents a world première. A "choke", in the form of an instrument external to the watch, is used to action the two crowns placed beneath the case.

All components and plates were developed, machined, decorated, assembled and then cased up in the workshops of the Manufacture Parmigiani Fleurier.





21

*21
CORUM, LABYRINTHOS

WHITE GOLD AUTOMATIC
WRISTWATCH WITH
LABYRINTHOS DIAL
NO. 6, CIRCA 1998

ETA 2824-2, the silvered dial in the
form of a labyrinth, sweep centre
seconds, three-part case in 18k white
gold, case back fastened by five screws,
case signed

Diameter: 38 mm.
US\$1,800-2,600 AED6,700-9,600

18



22

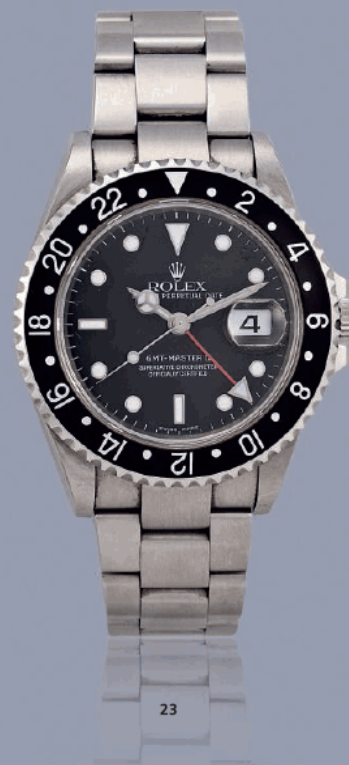
THE PROPERTY OF A PRIVATE COLLECTOR

*Φ22
**ROLEX, CELLINI PRINCE

WHITE GOLD MANUALLY-
WOUND CHRONOMETER
WRISTWATCH
MANUFACTURED IN 2007

Calibre 7040-1, rectangular form
movement, 21 jewels, rayon flammé de
la gloire dial, small seconds, two-part
case in 18k white gold, transparent snap
on case back, 18k white gold Rolex
deployant clasp, *case, dial and
movement signed*

Dimensions: 28 x 35 mm.
US\$6,000-8,000
AED23,000-29,000



23

*Φ23
ROLEX, GMT-MASTER II, REF.
16710

STAINLESS STEEL
AUTOMATIC DUAL TIME
BRACELET WATCH WITH
DATE DISPLAY
CASE F733512,
MANUFACTURED IN 2004

Calibre 3185, 31 jewels, gloss black
dial, sweep centre seconds, GMT hand,
date display, three-part case, brushed
and polished, sapphire crystal with
magnified lens, rotatable 24-hour
bezel, screw-down case back, *Twinlock*
crown, stainless steel Rolex Oyster
bracelet, *case, dial and movement
signed*

Diameter: 39.5 mm.
US\$3,000-4,000
AED12,000-15,000

*24

FRANCK MULLER,
PULSATION

PLATINUM MANUALLY-
WOUND CHRONOGRAPH
WRISTWATCH WITH
PULSOMETRIC SCALE
NO. 00, MANUFACTURED
IN 1990s

Calibre 13^{'''}, gloss white dial,
pulsometric scale, seconds and minute
counters, three-part case, transparent
case back, milled band,
18k white gold FM buckle, *case, dial
and movement signed*
Diameter: 37 mm.

US\$5,000-7,000

AED 19,000-26,000



24

*25

**FABERGÉ, AGATHON

PLATINUM AUTOMATIC
TRIPLE CALENDAR
WRISTWATCH WITH MOON
PHASE DISPLAY, LIMITED
EDITION OF 50
NO. 15/50, CIRCA 2006

Mechanical movement, engraved gold
rotor shaped as a double-headed
Romanov eagle, guilloché silvered
dial, sweep centre seconds, radial date
display, day, month and moon-phases
in apertures, three-part case, brushed
and polished, transparent case back
fastened by five screws, cabochon
sapphire-set crown, platinum Fabergé
buckle, *case, dial and movement
signed*
Diameter: 40 mm.

US\$5,000-7,000

AED 19,000-26,000



25

*26

**PARMIGIANI, TORIC
RETROGRADE PERPETUAL
CALENDAR

WHITE GOLD AUTOMATIC
PERPETUAL CALENDAR
WRISTWATCH WITH MOON
PHASE DISPLAY
NO. 15491, CIRCA 2008

Calibre PF333.01, 32 jewels, 22k gold
rotor, matte grey snailed dial with
applied satin finished sectors, sweep
centre seconds, day, moth, leap year
and moon phases in apertures,
retrograde date, three-part case in 18k
white gold, transparent case back
fastened by six screws, 18k white gold
PF deployant clasp, *case, dial and
movement signed*
Diameter: 40.5 mm.

US\$10,000-15,000

AED 37,000-55,000



26



27

*27

**GLASHÜTTE ORIGINAL, SENATOR MEISSEN

PLATINUM MANUALLY-WOUND WRISTWATCH WITH PORCELAIN DIAL, LIMITED EDITION OF 40 NO. 02/40, CIRCA 2006

Calibre GUB 49, three-quarter plate, 18 jewels, screwed gold chatons, hand-painted porcelain dial, three-part case, brushed and polished, milled bezel, transparent case back fastened by five screws, cabochon sapphire-set crown, platinum GG buckle, case, dial and movement signed
Diameter: 38.5 mm.

US\$13,000-18,000

AED48,000-66,000

With *Glashütte Original* presentation box, certificate and product literature.



29

*28

ALAIN SILBERSTEIN, TOURBILLON D'ART, TOURBILLON BLUE HOPE

TITANIUM MANUALLY-WOUND TOURBILLON WRISTWATCH WITH DATE DISPLAY AND MOTHER-OF-PEARL DIAL, LIMITED EDITION OF 9 NO. 1/9, CIRCA 2005

Calibre ASC 1.3, 25 jewels, tourbillon regulator, mother-of-pearl dial, date display, two-part case, star-shaped crown with triangular red enamel inlay, transparent case back fastened by eight screws, titanium *Alain Silberstein* buckle, case and movement signed
Diameter: 40 mm.

US\$20,000-30,000

AED74,000-110,000



28

THE PROPERTY OF A PRIVATE COLLECTOR

*29

**CHRONOSWISS, RÉGULATEUR À TOURBILLON

PLATINUM MANUALLY-WOUND TOURBILLON WRISTWATCH WITH REGULATOR DIAL NO. 974, CIRCA 2007

Calibre C.361, 23 jewels, screwed chatons, tourbillon regulator, twin barrels, guilloché platinum dial, three-part case, transparent screw down case back, platinum CR buckle, case, dial and movement signed
Diameter: 38 mm.

US\$15,000-20,000

AED56,000-73,000

20



30

VARIOUS PROPERTIES

*30

AUDEMARS PIGUET

WHITE GOLD AND DIAMOND-SET MANUALLY-WOUND BRACELET WATCH WITH ONYX DIAL

CASE C-88703, CIRCA 1990

Calibre 2080, 20 jewels, onyx dial, applied diamond-set numerals, two-part case in 18k white gold, bezel set with 60 brilliant-cut diamonds, case back fastened by six screws, 18k white gold AP bracelet, case, dial and movement signed
Diameter: 32mm.

US\$7,000-9,000

AED26,000-33,000

*31

AUDEMARS PIGUET, EDWARD PIGUET CHRONOGRAPH

WHITE GOLD AND DIAMOND-SET AUTOMATIC CHRONOGRAPH WRISTWATCH WITH DATE DISPLAY

CASE E-74580, CIRCA 2003

Calibre 2385, 37 jewels, engine-turned black dial, diamond-set hour markers, small seconds, minute and hour counters, date display, two-part case in 18k white gold, case back fastened by four screws, curved sides set with 44 diamonds (~1.60 cts), 18k white gold AP deployant clasp, case, dial and movement signed
Dimensions: 29 x 45 mm.

US\$10,000-15,000

AED37,000-55,000



31

*32

GIRARD-PERREGAUX, VINTAGE 1945 TOURBILLON AUTOMATIQUE

WHITE GOLD AUTOMATIC TOURBILLON WRISTWATCH NO.25, CIRCA 2000

Calibre 9610, 30 jewels, tourbillon regulator, matte black dial, two-part case in 18k white gold, case back fastened by four screws, 18k white gold GP deployant clasp, case, dial and movement signed
Dimensions: 32 x 48 mm.

US\$25,000-30,000

AED92,000-110,000

With Girard-Perregaux cardboard slipcase, certificate and product literature.



32

21

THE PROPERTY OF A GENTLEMAN

*33

**ULYSSE NARDIN, SAN MARCO CLOISSONNÉ,
ST. BASIL RED SQUARE

PLATINUM AUTOMATIC CHRONOMETER
WRISTWATCH WITH ENAMEL CLOISSONNÉ DIAL,
PRESENTED IN MULTI-LAYER TRANSLUCENT
ENAMEL *EGG OF THE TSARS*, LIMITED EDITION OF 30
NO. 10/30, MANUFACTURED IN 2005

Calibre UN-13, 21 jewels, enamel cloisonné dial depicting the
St. Basil Cathedral, sweep centre seconds, three-part case,
engraved case back fastened by six screws, platinum UN buckle,
case, dial and movement signed
Diameter: 40 mm.

US\$80,000-120,000

AED300,000-440,000

With *Ulysse Nardin* presentation case in the style of the *Egg of the Tsars* with outer wooden box, certificate, C.O.S.C and product literature.

The ST. BASIL RED SQUARE was created by Ulysse Nardin to honour the Kremlin on its 200th anniversary and is the most refined San Marco Cloisonné timepiece ever made.

It takes the artist in Switzerland one full month to complete each enamel cloisonné dial. The blue multi layer Egg of the Tsars is designed by Ulysse Nardin and hand made by Andrei Ananov, Russian artist in St. Petersburg. The egg is decorated with diamond showing the Cathedral St. Basil and the gates and walls of the Kremlin.



22





VARIOUS PROPERTIES

*34

AUDEMARS PIGUET, ROYAL OAK

WHITE GOLD QUARTZ BRACELET WATCH WITH DATE DISPLAY, SET WITH 336 BRILLIANT-CUT DIAMONDS (~3.00 CTS) AND 66 BAGUETTE-CUT EMERALDS (~4.65 CTS)

NO. 231, CASE D-45616, CIRCA 1994

Calibre 2610 quartz standardisation, 8 jewels, pave-set diamond dial, applied baguette-cut emerald-set hour markers, date display, three-part case in 18k white gold, baguette-cut emerald-set bezel, case back fastened by eight screws, 18k white gold, diamond and baguette-cut emerald-set AP bracelet, case, dial and movement signed
Dimensions: 25 x 31 mm.

US\$32,000-50,000

AED120,000-180,000

*35

AUDEMARS PIGUET, ROYAL OAK

WHITE GOLD QUARTZ BRACELET WATCH WITH DATE DISPLAY, SET WITH 508 BRILLIANT-CUT DIAMONDS (~4.42 CTS) AND 66 BAGUETTE-CUT EMERALDS (~5.56 CTS)

NO. 177, CASE D-51944, CIRCA 1995

Calibre 2612 quartz standardisation, 8 jewels, pave-set diamond dial, applied baguette-cut emerald-set hour markers, date display, three-part case in 18k white gold, baguette-cut emerald-set bezel, case back fastened by eight screws, 18k white gold, diamond and baguette-cut emerald-set AP bracelet, case, dial and movement signed
Dimensions: 33 x 42 mm.

US\$42,000-60,000

AED160,000-220,000



*36

OMEGA, CENTRAL TOURBILLON NO. 1

WHITE GOLD AUTOMATIC CENTRAL TOURBILLON BRACELET WATCH,
ENTIRELY SET WITH 148 BAGUETTE-CUT DIAMONDS (~16.10 CTS) AND
176 BAGUETTE-CUT EMERALDS (~21.56 CTS)

NO. 1, RETAILED BY ASPREY, LONDON, CIRCA 2000

Calibre 1170, tourbillon regulator, platinum rotor, matte silver-plated guilloché dial, hands on
two revolving sapphire discs, three-part case in 18k white gold, bezel set with 36 diamonds and
12 emeralds, 18k white gold *Omega* bracelet set with 112 diamonds and 164 emeralds, case,
dial and movement signed

Diameter: 38 mm.

US\$80,000-120,000

AED300,000-440,000

With *Omega* presentation box, certificate and product literature.

Omega created the world's first self-winding central tourbillon wristwatch in 1994 to
celebrate the company's 100th anniversary. Production is limited to 20 examples per
year but the actual quantities made are believed to be much smaller.





37

*37

AUDEMARS PIGUET, ROYAL OAK NICK FALDO

STAINLESS STEEL AND PLATINUM AUTOMATIC BRACELET WATCH WITH DATE DISPLAY, LIMITED SERIES OF 450 IN HONOUR OF NICK FALDO AND TO CELEBRATE THE 30TH ANNIVERSARY OF THE ROYAL OAK COLLECTION IN 2002

CASE E-80053, MANUFACTURED IN 2002

Calibre 2225, 36 jewels, 21k gold golf ball textured rotor, engraved with the signature of *Nick Faldo*, matte textured black dial, date display, three-part case, platinum bezel, transparent case back fastened by eight screws, screw-in crown, stainless steel AP bracelet, case, dial and movement signed

Dimensions: 36 x 41 mm.

US\$7,000-9,000

AED26,000-33,000

*38

AUDEMARS PIGUET, ROYAL OAK MINI

WHITE GOLD AND DIAMOND-SET QUARTZ BRACELET WATCH WITH MOTHER-OF-PEARL DIAL NO. 087, CASE D-91200, CIRCA 1998

Calibre 2601 quartz standardisation, 3 jewels, mother-of-pearl dial, applied diamond-set hour markers, three-part case in 18k white gold, bezel set with 32 brilliant-cut diamonds, case back fastened by eight screws, 18k white gold AP bracelet, case, dial and movement signed

Dimensions: 20 x 26 mm.

US\$6,000-8,000

AED23,000-29,000



38

*39

**PATEK PHILIPPE, REF. 5159G

WHITE GOLD AUTOMATIC PERPETUAL CALENDAR OFFICER'S-STYLE
WRISTWATCH WITH RETROGRADE DATE AND MOON PHASE DISPLAY
MOVEMENT 3410709, CASE 4436744, MANUFACTURED IN 2007

Calibre 315/236, Geneva Seal hallmarked, 30 jewels, 4-arm Gyromax balance, matte silvery
opaline dial with hand-guilloché sunburst pattern, sweep centre seconds, day, month, leap year
and moon phases in apertures, retrograde date, four-part case in 18k white gold, display case back
protected by a hinged dustcover, "turban"-style crown, 18k white gold PP deployant clasp, case,
dial and movement signed
Diameter: 38 mm.

US\$50,000-70,000

AED190,000-260,000

With Patek Philippe winding box, Certificate of Original, product literature and corrector.



THE PROPERTY OF A PRIVATE COLLECTOR

*40

**A. LANGE & SÖHNE, LANGE 1 TIME ZONE

PINK GOLD MANUALLY-WOUND WORLD TIME WRISTWATCH WITH DATE DISPLAY AND POWER-RESERVE INDICATION

CASE 172625, CIRCA 2007

Calibre L031.1, three-quarter plate, 54 jewels, 4 screwed gold chatons, twin mainspring barrels, matte solid silver dial, outer city ring, day/night indicators for main and zone times, power-reserve indicator, patented outside date, three-part case in 18k pink gold, transparent case back fastened by six screws, 18k pink gold Lange buckle, case, dial and movement signed
Diameter: 42 mm.

US\$18,000-22,000

AED67,000-81,000



40

*41

**A. LANGE & SÖHNE, LANGE 1 TIME ZONE

WHITE GOLD MANUALLY-WOUND WORLD TIME WRISTWATCH WITH DATE DISPLAY AND POWER-RESERVE INDICATION

CASE 167576, CIRCA 2006

Calibre L031.1, three-quarter plate, 54 jewels, 4 screwed gold chatons, twin mainspring barrels, matte solid silver dial, outer city ring, day/night indicators for main and zone times, power-reserve indicator, patented outside date, three-part case in 18k white gold, transparent case back fastened by six screws, 18k white gold Lange buckle, case, dial and movement signed
Diameter: 42 mm.

US\$20,000-25,000

AED74,000-92,000

*42

**VULCAIN, THE WORLD

PINK GOLD MANUALLY-WOUND WORLD TIME WRISTWATCH WITH ENAMEL CLOISSONNÉ DIAL AND ALARM FUNCTION, LIMITED EDITION OF 30 NO. 03/30, MANUFACTURED IN 2008

Calibre V-13, double barrel, enamel cloisonné dial, outer alarm and city rings, sweep centre seconds, alarm hand, three-part case in 18k pink gold, snap on case back, screw-in crowns, 18k pink gold Vulcain buckle, case, dial and movement signed
Diameter: 42 mm.

US\$6,000-8,000

AED23,000-29,000



42



43

*43

**PATEK PHILIPPE, WORLD TIME, REF. 5130R

PINK GOLD AUTOMATIC WORLD TIME WRISTWATCH

MOVEMENT 3640648, MANUFACTURED IN 2007

Calibre 240/228, Geneva Seal hallmarked, 33 jewels, 22k gold mini-rotor, guilloché silvery sunburst dial, outer city ring, three-part case in 18k pink gold, transparent screw-down case back, 18k pink gold PPCo deployant clasp, case, dial and movement signed
Diameter: 39.5 mm.

US\$18,000-25,000

AED67,000-92,000

*44

**PATEK PHILIPPE, WORLD TIME, REF. 5110J

YELLOW GOLD AUTOMATIC WORLD TIME WRISTWATCH

MOVEMENT 3214444, MANUFACTURED IN 2003

Calibre 240/188, Geneva Seal hallmarked, 33 jewels, 22k gold mini-rotor, guilloché silvery dial, outer city ring, three-part case in 18k gold, transparent screw-down case back, 18k gold PP deployant clasp, case, dial and movement signed
Diameter: 37 mm.

US\$15,000-20,000

AED56,000-73,000



44

THE PROPERTY OF A GENTLEMAN

*45

**PIAGET, BLACK TIE, EMPERADOR
TOURBILLON SKELETON

WHITE GOLD AND DIAMOND-SET MANUALLY-
WOUND SKELETONISED TOURBILLON WRISTWATCH
NO. 12, CASE 939076, MANUFACTURED IN 2008

Calibre 600P, 23 jewels, tourbillon regulator, transparent dial with gem-
set bridges, three-part case in 18k white gold, transparent case back
fastened by four screws, 18k white gold and diamond-set Piaget
deployant clasp, case, dial and movement signed
Dimensions: 29 x 40.5 mm.

US\$80,000-100,000

AED300,000-370,000

With a Piaget certificate.



THE PROPERTY OF A PRIVATE COLLECTOR

*46

**A. LANGE & SÖHNE, CABARET TOURBILLON

PLATINUM MANUALLY-WOUND 5-DAY-GOING
TOURBILLON WRISTWATCH WITH PATENTED
STOP-SECONDS MECHANISM, DATE DISPLAY AND
POWER-RESERVE INDICATION

CASE 170001, MANUFACTURED IN 2008

Calibre L042.1, three-quarter plate form movement, 45 jewels, 2 diamond endstones, 9 screwed gold chatons, tourbillon regulator with patented stop-seconds mechanism, twin mainspring barrel, hand-engraved intermediate-wheel and tourbillon cocks, matte solid-silver dial, subsidiary seconds, power-reserve indicator, patented outside date, four-part case, brushed and polished, transparent case back fastened by six screws, platinum Lange deployant clasp, case, dial and movement signed
Dimensions: 29.5 x 39 mm.

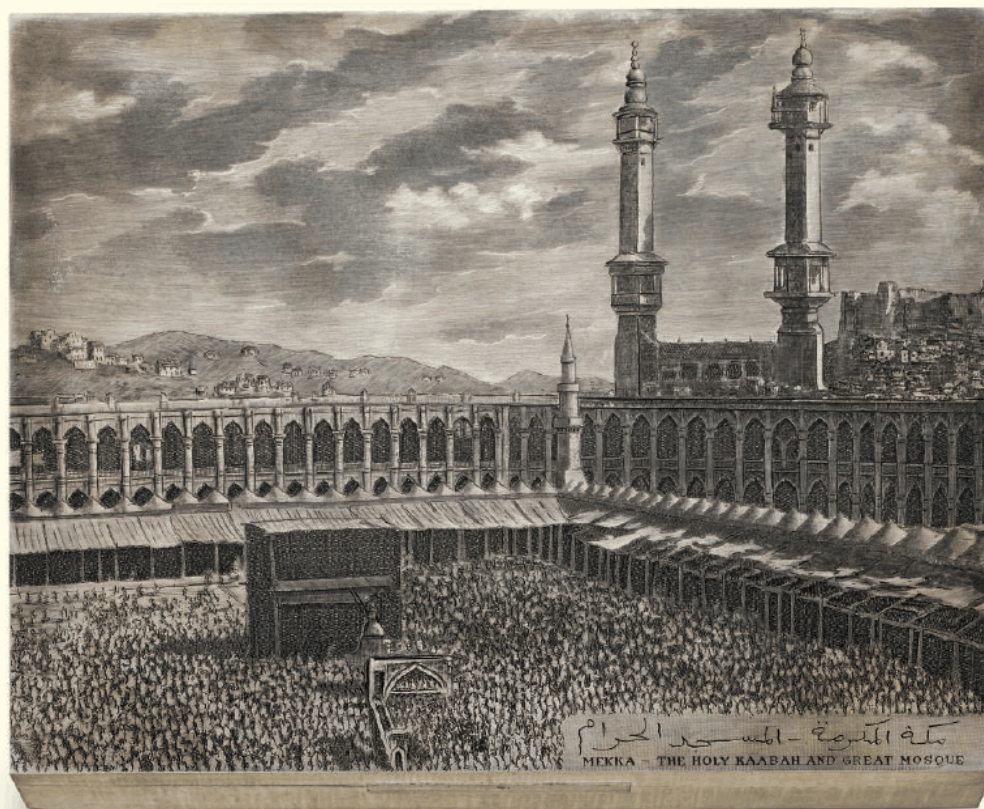
US\$120,000-180,000

AED450,000-660,000

The CABARET TOURBILLON represents a breakthrough in the tourbillon's two hundred-year existence. It is the first timepiece of its type that can be set precisely to the second, allowing an accurate synchronisation with an external time source. This horologically challenging complication is achieved with Lange's patented stop-seconds mechanism.

When the crown is pulled, a complex mechanical motion brings a stop lever with two V-shaped spring arms into contact with the outer rim of the balance wheel, which immediately causes it to stop. The delicate two-armed steel spring is hinged at one of the brake lever's rotation points, avoiding any one of the tourbillon cage's three posts. The asymmetric geometry of the two spring ends ensures they exert optimal pressure regardless of the spring's position in relation to the balance wheel.





47
(illustrated reduced)

***47**
A SILVER BOX, BY BUCCELLATI

Of rectangular outline, the textured box with engraved hinged cover depicting the great Mosque of Mecca with minarets and city in the background, engraved *Mekka - The Holy Kaabah and Great Mosque* in English and Arabic, 26.0 by 20.0 by 4.0 cm

With maker's mark for Mario Buccellati, signed *Incisa Nella Bottega Di Mario Buccellati* (Engraved in the Workshop of Mario Buccellati)

US\$10,000-15,000 AED37,000-55,000

***48**
A SILVER BOX, BY BUCCELLATI

Of rectangular outline, the textured box with engraved hinged cover depicting a traditional Arabic town, engraved *Jiddah - A Typical Square* in English and Arabic, 20.0 by 15.0 by 3.0 cm, in Buccellati fitted green case

With indistinct maker's mark, signed *Incisa Nella Bottega Di Mario Buccellati* (Engraved in the Workshop of Mario Buccellati)

US\$5,000-7,000 AED19,000-26,000

***49**
A SILVER BOX, BY BUCCELLATI

Of square outline, the textured box with engraved hinged cover depicting the minaret and domes of Medina, engraved *Medina - The Green Dome* in English and Arabic, 25.0 by 25.0 by 3.5 cm, in Buccellati fitted green case

With indistinct maker's mark, signed *Incisa Nella Bottega Di Mario Buccellati* (Engraved in the Workshop of Mario Buccellati)

US\$10,000-15,000 AED37,000-55,000





48
(illustrated reduced)



49
(illustrated reduced)



50

***50**
A PAIR OF SAPPHIRE, GARNET AND DIAMOND FLOWER EAR PENDANTS

Each designed as an articulated line of three graduated flower heads set with vari-coloured sapphires and green garnets to the brilliant-cut diamond centres and three-stone diamond spacers, 7.4 cm long

US\$7,500-8,000

AED28,000-29,000



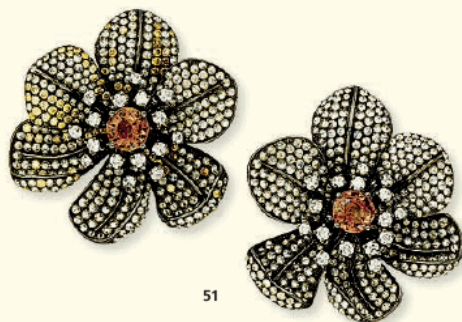
52

52
A TOURMALINE AND DIAMOND PENDANT

The oval-shaped pink tourmaline weighing 49.55 carats to the pavé-set vari-cut diamond surround, surmount and braided chain, 45.3 cm long

US\$18,000-22,000

AED67,000-81,000



51

***51**
A PAIR OF TOURMALINE AND DIAMOND FLOWER EAR CLIPS

Each designed as a circular-shaped pink tourmaline centre with brilliant-cut diamond pistils to the six pavé-set diamond petals, one ear clip with yellow diamond accents, 3.6 cm wide

US\$7,500-8,000

AED28,000-29,000

53
A SUITE OF MOONSTONE AND DIAMOND JEWELLERY

The necklace composed of thirteen slightly graduated cabochon moonstones within a pavé-set diamond surround to the similarly set diamond link spacers, with matching ear pendants, necklace 42.5 cm long, ear pendants 5.2 cm long (2)

US\$15,000-20,000

AED56,000-73,000



53



53



54

***54**
A LADY'S DIAMOND AND SAPPHIRE 'HAPPY SPORT' WRISTWATCH, BY CHOPARD

With quartz movement, the circular white dial with Roman numeral quarters and blue steel hands containing five free-floating diamond collets within a pavé-set diamond two-tiered bezel with cabochon sapphire lugs and crown to the diamond-set brick-link bracelet and concealed double deployant clasp, 2.6 cm diameter

Case, dial and movement signed Chopard Geneva, case no. 380327

US\$6,000-8,000

AED23,000-29,000



55

****55**
A LADY'S DIAMOND AND SAPPHIRE WRISTWATCH, BY CHOPARD

With quartz movement, the square mother-of-pearl dial with silvered hands within a pavé-set diamond bezel with cabochon sapphire lugs and crown to the brick-link bracelet with concealed double deployant clasp, 2.1 cm wide

Case, dial and movement signed Chopard Geneva, case no. 463951 419 1, Ref 10/6115-23

US\$3,000-5,000

AED12,000-18,000



56

56
A PAIR OF DIAMOND CUFFLINKS

Of circular outline, each set with a brilliant-cut brown diamond within a pavé-set diamond and coloured diamond surround to the similarly designed hinged bar and post, 2.6 cm diameter

US\$15,000-20,000

AED56,000-73,000



57

57
A PAIR OF DIAMOND CUFFLINKS

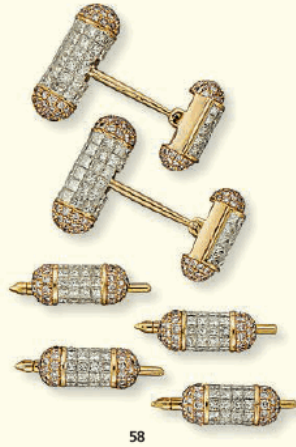
Each designed as a cylindrical baton pavé-set with calibré-cut diamonds and black diamond-set domed terminals to the similarly designed hinged bar, 2.0 cm wide

US\$7,000-10,000

AED26,000-37,000

One of only twelve similar cufflinks ever produced

THE DRESS-SETS AND CUFFLINKS OFFERED AS LOT 57 TO 60 ARE EXCEPTIONAL IN THE FACT THAT THE DIAMONDS USED TO CREATE THIS UNUSUAL SETTING MUST BE CUT TO VERY PRECISE DIMENSIONS. THIS HIGHLY SKILLED CALCULATION IS COMPUTER GENERATED TO ENSURE THE EXACT SHAPE IS ACHIEVED. THE EXECUTION OF THIS CUT IS FURTHER CHALLENGED BY THE SUPREME HARDNESS OF THE DIAMOND WHICH IS NOT THE CASE WHEN CUTTING SOFTER STONES SUCH AS RUBY OR EMERALD. VERY FEW CRAFTSMEN HAVE THE EXPERTISE AND TALENT TO ACCOMPLISH SUCH A VENTURE, THEREFORE RESULTING IN A PIECE OF JEWELLERY THAT IS AS RARE AS IT IS HANDSOME



58
A DIAMOND DRESS-SET

The cufflinks designed as a cylindrical baton pavé-set with calibré-cut diamonds and pink diamond-set domed terminals to the similarly designed hinged bar, with four matching dress-buttons, cufflinks 2.0 cm wide, dress-buttons 1.5 cm wide

(5)

US\$15,000-20,000 AED56,000-73,000

One of only two similar dress-sets ever produced



59
A DIAMOND DRESS-SET

The cufflinks designed as a cylindrical baton pavé-set with calibré-cut diamonds and yellow diamond-set domed terminals to the similarly designed hinged bar, with four matching dress-buttons, cufflinks 2.0 cm wide, dress-buttons 1.5 cm wide

(5)

US\$12,000-15,000 AED45,000-55,000

One of only two similar dress-sets ever produced

60
A DIAMOND DRESS-SET

The cufflinks designed as a cylindrical baton pavé-set with calibré-cut diamonds and diamond-set domed terminals to the similarly designed hinged bar, with four matching dress-buttons, cufflinks 2.0 cm wide, dress-buttons 1.5 cm wide

(5)

US\$15,000-20,000 AED56,000-73,000

One of only four similar dress-sets ever produced





61

61
A SUITE OF MULTI-COLOURED SAPPHIRE AND DIAMOND JEWELLERY, BY DAVID MORRIS

The necklace designed as five rows of alternating oval-shaped multi-coloured sapphires and brilliant-cut diamonds to the pavé-set diamond line spacers and similarly set back chain, with matching ear pendants, necklace 40.0 cm long, ear pendants 5.5 cm long (3)

Signed David Morris

US\$20,000-30,000

AED74,000-110,000



61

•Ψ62
A RUBY AND DIAMOND PENDENT NECKLACE

Designed as an articulated pear-shaped ruby weighing 3.01 carats within a pavé-set diamond double surround to the rose-cut diamond surmount and spectacle-set diamond chain, 40.0 cm long

US\$8,000-12,000

AED30,000-44,000



62

Ψ63
A CARVED EMERALD, DIAMOND AND MULTI-GEM PENDENT NECKLACE

The pendant comprising a triangular-shaped carved emerald weighing 27.64 carats suspended from a series of diamond-set spheres interspaced with alternating ruby, sapphire and emerald beads to the similarly designed necklace and sapphire three-bead clasp, 40.0 cm long

US\$25,000-35,000

AED92,000-130,000

Ψ64
A CARVED EMERALD, DIAMOND AND RUBY RING

The symmetrically carved oval-shaped emerald weighing 13.35 carats to the square-shaped ruby and tapered baguette-cut diamond shoulders with pavé-set diamond accents, emerald carving only circa early 1800s, ring size 6

US\$30,000-40,000

AED120,000-150,000



64

63

39



Ψ65
****A SET OF DIAMOND, RUBY AND
 IVORY ELEPHANT JEWELLERY,
 BY SANZ**

The bangle designed as a textured gold elephant head with carved cabochon ruby and single-cut diamond ornamentation to the circular-cut ruby eyes and ivory tusks, with matching brooch, earrings and ring, circa 1965, bangle inner diameter 14.0 cm, brooch 5.7 cm wide, earrings 1.9 cm long, ring size 3½ (4)

Signed Sanz

US\$6,000-8,000 AED23,000-29,000

66
**A PAIR OF DIAMOND
 EAR PENDANTS**

Each designed as a reverse-set diamond bombé drop suspended from a brilliant-cut diamond line to the similarly designed circular surmount, 6.2 cm long

US\$14,000-18,000 AED52,000-66,000



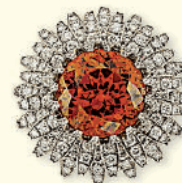
67
**A SPESSARTINE GARNET AND
 DIAMOND FLORAL RING**

The circular-shaped orange spessartine garnet weighing 19.14 carats to the double row of pavé-set diamond rotating petals, gallery and hoop, ring size 5½

Accompanied by report 91024509 dated 26 September 2005 from the AGTA Gemological Testing Centre stating that the spessartine garnet shows no indications of enhancement

US\$25,000-35,000 AED92,000-130,000

Often thought of as dark red gems, garnets in reality are found in a variety of colours. Not a single mineral, but a group of six closely related in physical and chemical properties. Spessartine garnet is one of the rarer of these minerals. When pure, it displays a vibrant orange colour but this is commonly dampened to a reddish or brownish colour due to iron impurities. The spessartine offered here is rare not only owing to its bright orange colour free from many of the more common impurities, but also for its large size and clarity, displaying very few of the typical feather-like or drop-shaped inclusions.





Ψ68

A NATURAL AND CULTURED PEARL, DIAMOND AND MULTI-GEM
NECKLACE, BY VAN CLEEF & ARPELS

The front comprising three articulated drop-shaped pearls within a diamond, emerald and sapphire surround suspended from the similarly designed pearl fringed necklace, 18.0 cm long

Signed and numbered VCA NY 44977 for Van Cleef & Arpels

Accompanied by report 2105603078 dated 6 March 2009 from the Gemological Institute of America (GIA) stating that twenty of the pearls are natural and four are cultured

US\$35,000-45,000

AED130,000-170,000



69

***69**
A GOLD, AMETHYST AND DIAMOND COMPACT,
BY FRED

Of basketweave design, the wedge-shaped case with calibr -cut amethysts and brilliant-cut diamond sides to the amethyst push-piece, opening to reveal a mirror, *7.2 cm long*

Signed Fred Paris

US\$3,000-5,000

AED12,000-18,000



70

71
A MULTI-STRAND DIAMOND CASCADE NECKLACE,
BY MICHAEL YOUSSEOUFIAN

The front designed as five rows of spectacle-set brilliant-cut diamonds and coloured diamonds gathered by two pav -set diamond circular terminals to the similarly designed three-row backchain with rose-cut diamond clasp, *60.0 cm long*

Signed MY for Michael Youssoufian

US\$55,000-65,000

AED210,000-240,000

70
A PAIR OF DIAMOND EARRINGS,
BY VAN CLEEF & ARPELS

Each designed as a pav -set yellow diamond bomb  half-hoop with brilliant-cut diamond terminals and marquise-cut diamond accents, *3.3 cm long*

Signed VCA NY no. 51914, for Van Cleef & Arpels

US\$25,000-35,000

AED92,000-130,000

72
A DIAMOND CLUSTER RING

The cushion-shaped light yellow diamond weighing 13.01 carats within a diamond ten-stone cluster surround to the bifurcated shoulders and double hoop, *ring size 6 1/2*

US\$120,000-140,000

AED450,000-510,000





KNOWN AS 'KAWKAB AL SHARQ' - 'THE SHINING STAR OF THE MIDDLE EAST', UMM KULTHUM (1904-1975) WAS UNQUESTIONABLY THE GREATEST ARAB SINGER OF THE 20TH CENTURY. HER INCOMPARABLE VOICE WAS RENOWNED ALL OVER EGYPT BY THE TIME SHE WAS 5 YEARS OLD AND HER IMPORTANCE IN THE ARAB COUNTRIES WAS SO GREAT THAT SHE WAS RECEIVED WITH THE SAME CEREMONY AS HEADS OF STATE. HER CONCERTS WERE HELD ON THE FIRST THURSDAY OF EACH MONTH IN WHICH SHE WOULD SING HER MASSIVE AUDIENCE INTO AN ALMOST TRANCE-LIKE STATE WITH SINGLE SONGS LASTING WELL OVER AN HOUR AS SHE REPEATED LINES OVER AND OVER AGAIN, EACH IN A SLIGHTLY DIFFERENT STYLE. HER FUNERAL, LED BY THE PRESIDENTIAL COURT, WAS FOLLOWED BY SEVERAL MILLION OF HER ADMIRERS AND HER POPULARITY REMAINS STRONG EVEN THIRTY YEARS AFTER HER DEATH.

FORMERLY THE PROPERTY OF UMM KULTHUM
LOTS 73 TO 76

73
A CULTURED PEARL AND PASTE FESTOON BROOCH

The pavé-set paste openwork plaque designed as two facing swans with red paste eyes to the five-strand cultured pearl festoon, 15.0 cm long

US\$3,000-5,000

AED 12,000-18,000

PROVENANCE:

The brooch was a gift from the late Shah of Iran, Mohammed Reza Pahlavi (1919-1980) to Umm Kuthum on the occasion of his wedding to Princess Fawzia, the sister of King Farouk, the late King of Egypt.

*74
A LADY'S CULTURED PEARL AND DIAMOND
WRISTWATCH

The round cream dial with baton hour markers within a fan-shaped frame with cultured pearl border and brilliant-cut diamond accents to the metal strap and buckle clasp, 17.0 cm long

US\$4,000-6,000

AED 15,000-22,000



73



74



illustrated reduced

75
AN INDIAN MULTI-STRAND PEARL AND TURQUOISE NECKLACE

The front designed as a stylised peacock with pearl and turquoise detail suspended from ten rows of seed pearls measuring from 7.6 to 2.0 mm to the openwork gold, pearl and turquoise spacers and rope-like backchain, *circa 1900, 54.0 cm long, pearls untested*

US\$15,000-25,000

AED56,000-92,000





Umm Kulthum wearing the brooch from lot 76

76

A SET OF EMERALD, DIAMOND AND CULTURED PEARL JEWELLERY

Comprising a brooch designed as a stylised pavé-set diamond bow with cultured pearl and cabochon emerald detail to the articulated cabochon emerald and diamond tassel, with matching bracelet and ear pendants, *brooch 11.0 cm wide, bracelet 18.0 cm long, ear pendants 7.3 cm long* (3)

US\$40,000-60,000

AED150,000-220,000



VARIOUS PROPERTIES

77

A TURQUOISE AND DIAMOND BRACELET, BY CARTIER

The central cabochon turquoise and diamond cluster with pavé-set diamond leaves and baguette-cut diamond detail to the graduated turquoise bracelet with brilliant-cut diamond border and turquoise and diamond cluster clasp, 17.5 cm long

Signed and numbered Cartier Paris 8998

US\$30,000-40,000

AED120,000-150,000

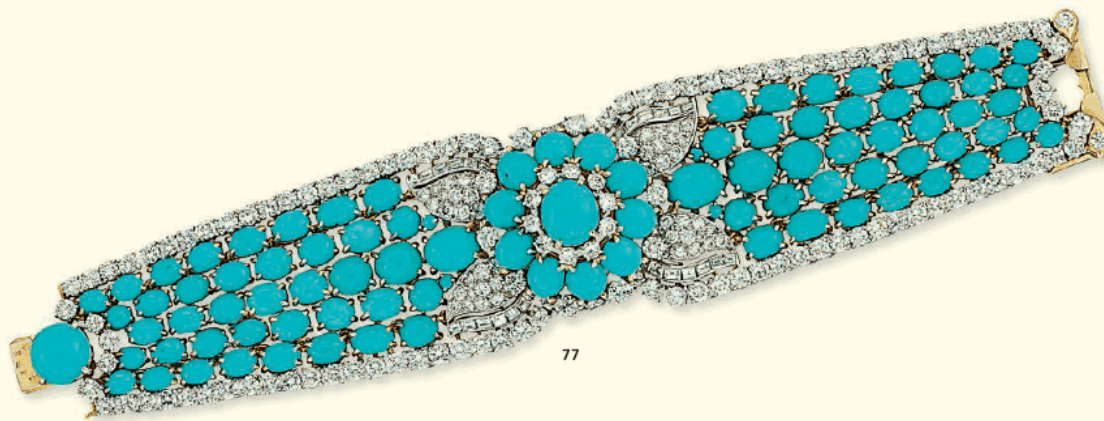
79

AN AMETHYST AND DIAMOND NECKLACE

The detachable pendant composed of an oval-shaped amethyst weighing 47.43 carats within a brilliant-cut diamond surround to the V-shaped brilliant-cut diamond double line necklace, 43.5 cm long, pendant may be worn as a brooch

US\$35,000-45,000

AED130,000-170,000



78

A DIAMOND RING

The central brilliant-cut diamond weighing 7.18 carats to the pear-shaped diamond shoulders and plain hoop, ring size 5½

Accompanied by reports 16846299 and 17220285 dated 12 May 2008 and 22 January 2008 from the Gemological Institute of America (GIA) stating that the diamonds weighing 1.54 and 1.52 carats are K colour, SI1 clarity

US\$45,000-55,000

AED170,000-200,000

80

A PAIR OF DIAMOND EAR STUDS

Each set with a brilliant-cut diamond weighing 2.03 and 2.01 carats to the plain claw mount

Accompanied by reports 16948144 and 16934454 dated 4 April 2008 and 28 March 2008 from the Gemological Institute of America (GIA) stating that the diamonds are I colour, SI1 clarity

US\$22,000-28,000

AED81,000-100,000





81

81
A DIAMOND PENDENT NECKLACE

Designed as an articulated line of five slightly graduated brilliant-cut diamonds each within a pavé-set diamond surround to the spectacle-set diamond chain, 39.5 cm long

US\$9,000-12,000 AED34,000-44,000



82

•82
A DIAMOND THREE-STONE PENDANT

The pear-shaped diamond weighing 5.72 carats suspended from the marquise-cut diamond spacer weighing 2.05 carats to the heart-shaped diamond surmount weighing 3.02 carats within a rub-over setting, 4.4 cm long

Accompanied by report 14629820 dated 3 November 2005 from the Gemological Institute of America (GIA) stating that the diamond weighing 2.05 carats is S to T colour range, VVS1 clarity

Report 14613114 dated 31 October 2005 from the GIA stating that the diamond weighing 3.02 carats is Y-Z colour range, VS2 clarity

US\$40,000-60,000 AED150,000-220,000

84
A PAIR OF DIAMOND EAR STUDS

Each set with a brilliant-cut diamond weighing 4.26 and 4.17 carats to the plain claw mount

US\$40,000-60,000 AED150,000-220,000

•85
A PAIR OF DIAMOND TWO-STONE EAR PENDANTS

Each designed as an octagonal-shaped diamond weighing 3.02 and 3.01 carats suspended from an oval-shaped diamond weighing 2.41 and 2.33 carats within a rub-over setting, 3.0 cm long

US\$30,000-50,000 AED120,000-180,000

83
A DIAMOND LINE NECKLACE

Comprising eighty-one slightly graduated brilliant-cut diamonds, 37.2 cm long

Accompanied by report 15799125 dated 11 April 2007 from the Gemological Institute of America (GIA) stating that the diamond weighing 1.00 carat is G colour, SI2 clarity

US\$22,000-28,000 AED81,000-100,000

86
A DIAMOND RING

The rectangular-shaped tinted yellow diamond weighing 7.54 carats to the vari-cut diamond surround and quatrefoil diamond shoulders, ring size 6¼

US\$35,000-50,000 AED130,000-180,000



83



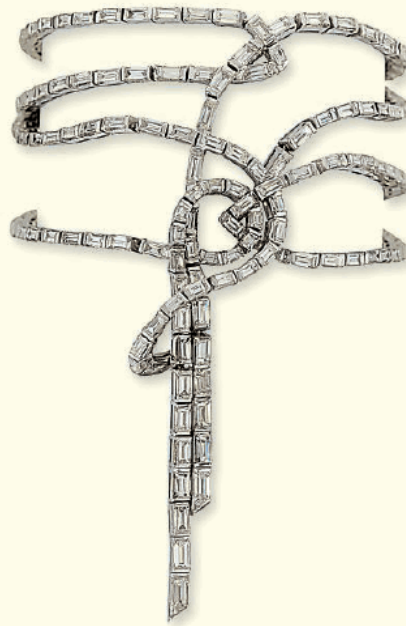
84



85



86



87

87
A DIAMOND BRACELET

Of stylised ribbon design, comprising four rows of baguette-cut diamonds intertwined to form a knot to the centre with articulated tassel terminal, 17.0 cm long

US\$12,000-15,000

AED45,000-55,000

88
A GROUP OF DIAMOND JEWELLERY

The necklace designed as a series of pavé-set diamond curved panels suspending a graduated fringe of brilliant-cut diamond collet tassels, the ear clips each of bombé design set with brilliant-cut diamonds, necklace 39.0 cm long, ear clips 3.3 cm long (2)

US\$50,000-60,000

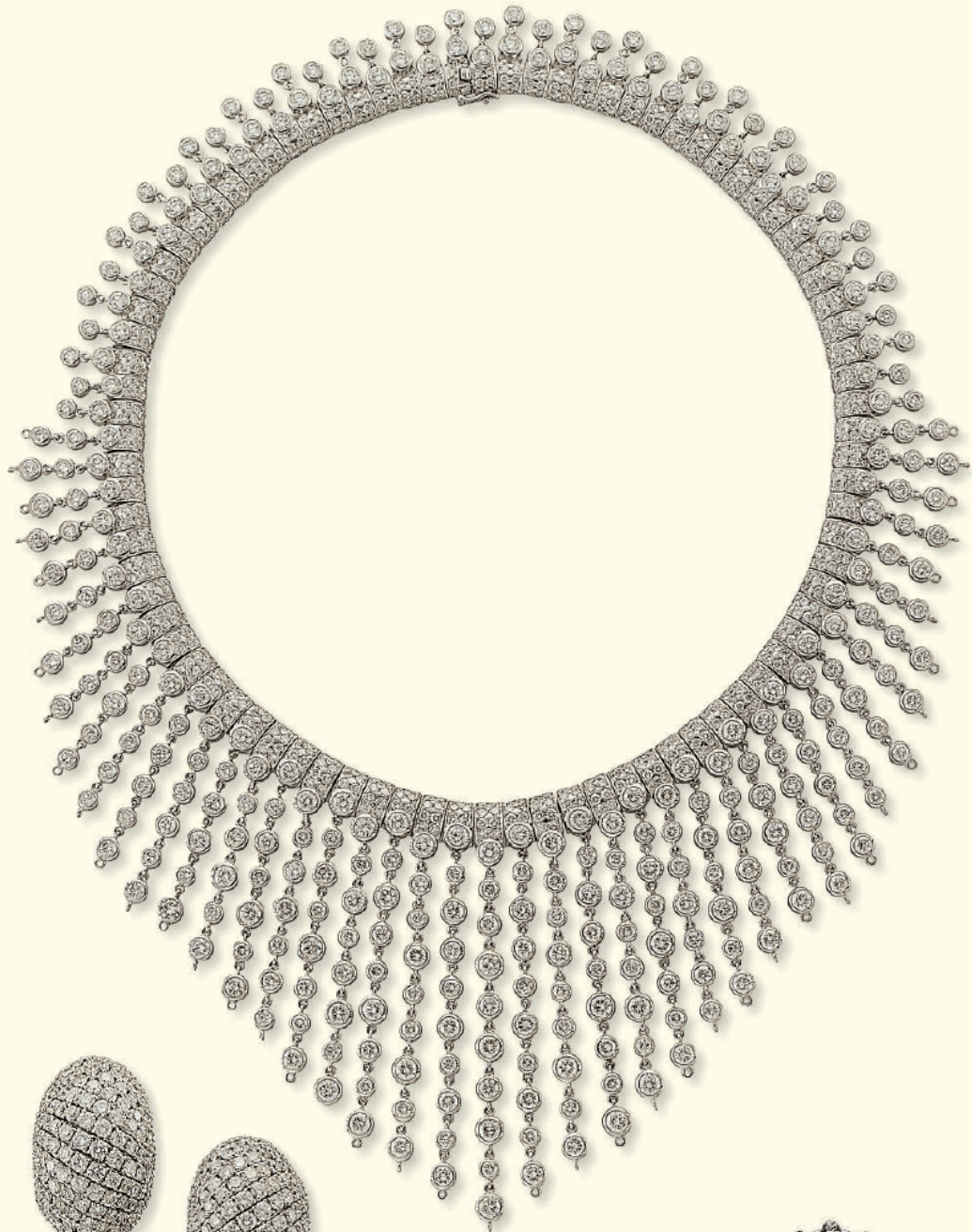
AED190,000-220,000

89
A DIAMOND SINGLE-STONE RING

The brilliant-cut diamond weighing 9.38 carats to the crenellated bombé surround, ring size 9½

US\$35,000-50,000

AED130,000-180,000



88



88



89

Ψ90

A SUITE OF RUBY AND DIAMOND JEWELLERY

The front designed as a fringe of graduated pear-shaped rubies and diamonds to the diamond trefoil surmount and marquise-shaped diamond spacers suspended from a baguette-cut diamond line, with matching ear pendants, *necklace 39.0 cm long, ear pendants 4.3 cm long* (2)

Accompanied by ten reports dated from 5 December 2000 to 3 April 2008 from the Gemological Institute of America (GIA) with the following details:

Report	Date	Colour	Clarity	Weight (carats)	Cut
16310299	24 August 2007	D	VS2	1.03	Marquise
14583940	10 August 2005	D	SII	1.20	Pear
16310156	27 August 2007	E	VS2	1.06	Marquise
14157111	4 February 200	E	SII	1.17	Pear
11337980	5 December 2000	E	SII	1.10	Pear
16325355	16 October 2007	F	SII	1.14	Pear
16408790	19 October 2007	F	SII	1.03	Pear
16879842	26 February 2008	F	SI2	1.01	Pear
16948594	3 April 2008	G	VS2	1.29	Pear
16947927	31 March 2008	G	SI2	1.51	Pear
US\$110,000-130,000					AED410,000-480,000

Ψ91

A RUBY AND DIAMOND RING

The cushion-shaped ruby weighing 5.07 carats to the micro pavé-set diamond surround, gallery and fine hoop, *ring size 5½*

Accompanied by report 2007-032888 dated 31 March 2007 from the Gem Research SwissLab (GRS) stating that the ruby is of Burmese origin (Myanmar) with no indications of thermal treatment

US\$130,000-150,000 AED480,000-550,000

92

A DIAMOND LINE BRACELET

Composed of thirty-five slightly graduated rectangular-shaped diamonds, the largest weighing 1.41 carats, *17.5 cm long*

US\$85,000-100,000 AED320,000-370,000



90



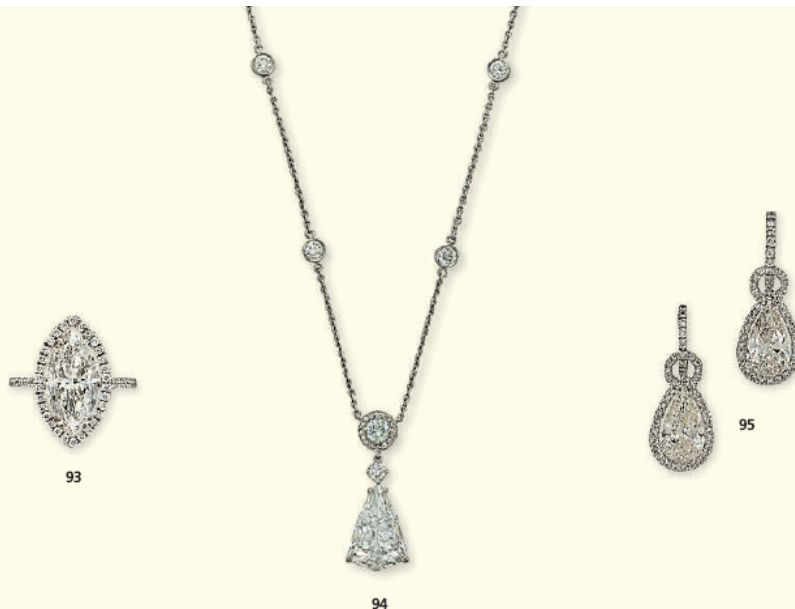
90



91



92



93
A DIAMOND SINGLE-STONE RING

The marquise-shaped diamond weighing 5.02 carats to the pavé-set diamond surround, shoulders and half hoop, ring size 6

US\$50,000-60,000 AED190,000-220,000

94
A DIAMOND AND COLOURED DIAMOND PENDANT

The modified kite-shaped diamond weighing 5.01 carats suspended from a brilliant-cut diamond spacer to the brilliant-cut Fancy Light Bluish Green diamond within a pavé-set diamond halo with spectacle-set diamond chain, 48.0 cm long, may also be fastened at 43.0 cm

Accompanied by report 16325430 dated 8 October 2007 from the Gemological Institute of America (GIA) stating that the diamond weighing 5.01 carats is D colour, Internally Flawless clarity

Report 15265058 dated 11 December 2006 from the GIA stating that the diamond weighing 0.23 carats is natural Fancy Light Bluish Green

US\$160,000-180,000 AED590,000-660,000

95
A PAIR OF DIAMOND EAR PENDANTS

Each designed as a pear-shaped diamond to the micro pavé-set diamond surround, connecting link and hoop, 2.8 cm long

US\$10,000-15,000 AED37,000-55,000

96
A DIAMOND NECKLACE

Composed of three heart-shaped diamonds of increasing degrees of colour within a pavé-set diamond surround each individually suspended from a graduated spectacle-set diamond chain, 40.0 cm long

US\$20,000-30,000 AED74,000-110,000

97
A COLOURED DIAMOND RING, BY CALLEIJA

The pear-shaped Fancy Light Purplish Pink diamond weighing 1.52 carats to the oval-shaped pink diamond shoulders, ring size 7, in Calleija dark blue case

Signed Calleija and with maker's mark for John Calleija

Accompanied by report 14584350 dated 26 September 2005 from the Gemological Institute of America (GIA) stating that the diamond weighing 1.52 carats is Fancy Light Purplish Pink, SI2 clarity

US\$22,000-28,000 AED81,000-100,000

International Award winning designer John Calleija is known for his one of a kind designs which feature rare Australian pink diamonds. Founded in 1985, Calleija has a boutique located in Queensland's Gold Coast as well as London's Old Bond Street

98
A COLOURED DIAMOND AND DIAMOND RING

The oval-shaped Fancy Vivid Purplish Pink diamond weighing 1.53 carats to the marquise-cut diamond double tiered surround and plain hoop, ring size 6½

Accompanied by report 2105602775 dated 5 March 2009 from the Gemological Institute of America (GIA) stating that the diamond is Fancy Vivid Purplish Pink, I1 clarity

US\$60,000-80,000 AED220,000-290,000



96



97



98



98
(illustrated unmounted)



100

99

99

A THREE-STRAND NATURAL PEARL NECKLACE

Comprising three rows of sixty-seven, sixty-five, and sixty-three graduated pearls measuring from 8.0 to 3.7 mm to the triangular-shaped twelve pearl clasp, 48.5 cm long, pearls on clasp untested

Accompanied by report 52332 dated 9 September 2008 from the Swiss Gemmological Institute (SSEF) stating that 195 pearls are of natural saltwater origin

US\$50,000-70,000

AED190,000-260,000

100

**A PAIR OF NATURAL PEARL AND DIAMOND
EAR PENDANTS**

Each designed as a drop-shaped pearl to the pavé-set diamond half cap suspended from a line of brilliant and baguette-cut diamonds, 3.0 cm long

Accompanied by report 0127855 dated 20 January 2008 from The Gem Testing Laboratory of Great Britain (Gem-A) stating that the pearls are of natural origin

US\$18,000-25,000

AED67,000-92,000



101
A SUITE OF NATURAL PEARL AND
DIAMOND JEWELLERY

The necklace designed as a pendant comprising three button-shaped pearls to the pavé-set diamond links suspended from a similarly designed necklace, with matching ear pendants, necklace 41.5 cm long, ear pendants 4.5 cm long (2)

Accompanied by fifteen reports dated 19 August 2008 from the Gübelin Gem Lab stating that the fifteen (largest) pearls are of natural saltwater origin
Thirteen smallest pearls untested

US\$55,000-75,000

AED210,000-280,000



102



103

102

A NATURAL PEARL AND DIAMOND NECKLACE

The drop-shaped pearl weighing 73.27 grains (18.31 carats) and measuring 12.8 by 12.7 mm to the pavé-set diamond cap suspended from a V-shaped diamond-set necklace, 42.0 cm long

The necklace signed Monture Van Cleef & Arpels 5603, pearl later addition

Accompanied by report 0510075 dated 3 November 2005 from the Gübelin Gem Lab stating that the pearl is of natural saltwater origin

US\$50,000-70,000

AED190,000-260,000

103

A PAIR OF NATURAL PEARL AND DIAMOND EAR PENDANTS

Each designed as a drop-shaped pearl to the pavé-set diamond cap suspended from five marquise-shaped diamonds to the brilliant-cut diamond surmount, 4.0 cm long

Accompanied by report 17118 dated 13 March 2008 from the AnchorCert Laboratory stating that the pearls are of natural origin

US\$20,000-30,000

AED74,000-110,000

104

A FIVE-STRAND NATURAL PEARL NECKLACE

Comprising five rows of ninety-nine, ninety-three, ninety-one, eighty-five and eighty-four graduated pearls measuring from 9.8 to 2.6 mm to the pavé-set diamond clasp, 40.0 cm long

Accompanied by five reports dated 19 December 2007 from the Gemological Institute of America (GIA) stating that the pearls are of natural saltwater origin

US\$130,000-150,000

AED480,000-550,000



104

63



105
A SINGLE-STRAND NATURAL PEARL NECKLACE

Comprising eighty-three graduated pearls measuring from 11.1 to 5.8 mm to the rectangular-shaped emerald and pavé-set diamond clasp, 69.0 cm long

Accompanied by report 2105603066 dated 6 March 2009 from the Gemological Institute of America (GIA) stating that eighty-three pearls are natural

US\$160,000-180,000

AED590,000-660,000

106
A PAIR OF NATURAL PEARL AND DIAMOND EAR PENDANTS

Each designed as a drop-shaped pearl with pavé-set diamond cap suspended from a line of circular-cut diamonds, circa 1915, 4.5 cm long

Accompanied by report 10037809 dated 9 July 2007 from the AGTA Gemological Testing Centre stating that the pearls are of natural saltwater origin

US\$40,000-60,000

AED150,000-220,000

107
A COLOURED NATURAL PEARL AND DIAMOND RING

The undrilled pinkish/purplish button pearl weighing 19.60 grains (4.90 carats) and measuring 9.60 by 7.17 mm within a marquise-cut diamond surround to the plain hoop, ring size 6

Accompanied by report 0128052 dated 7 March 2008 from the Gem Testing Laboratory of Great Britain (Gem-A) stating that the pearl is natural with no indications of treatment

US\$15,000-20,000

AED56,000-73,000





108

108
AN INDIAN NATURAL PEARL, MULTI-GEM AND
ENAMEL NECKLACE

Designed as seventeen graduated links each comprising a drop-shaped pearl with enamel cap, table-cut diamond plaque and pearl terminal to the pearl and carved emerald spacers and adjustable backcord, 33.5 cm long, seed pearls untested

Accompanied by report 2105603329 dated 6 March 2009 from the Gemological Institute of America (GIA) stating that the pearls are natural

US\$ 140,000-180,000

AED520,000-660,000

109
A THREE-STRAND NATURAL PEARL NECKLACE

Comprising three rows of seventy-one, sixty-seven and sixty-three graduated pearls, measuring from 10.9 to 5.6 mm to the diamond-set rectangular-shaped plaque clasp, 46.0 cm long

Accompanied by report 973531 dated 24 July 2003 from the Precious Stone Laboratory London stating that the pearls are natural

US\$ 140,000-180,000

AED520,000-660,000



109

67



110

110
A DIAMOND AND EMERALD RING

The central rectangular-shaped diamond weighing 4.30 carats to the undulating calibré-cut emerald surround, ring size 5
Accompanied by report 16790549 dated 8 January 2008 from the Gemological Institute of America (GIA) stating that the diamond is D colour, VS1 clarity

US\$60,000-80,000 AED230,000-290,000



111

111
AN EMERALD AND DIAMOND RING

The rectangular-shaped emerald weighing 16.71 carats to the trapezoid-shaped diamond shoulders and plain hoop, ring size 6
Accompanied by report 0804534 dated 3 April 2008 from the Gübelin Gem Lab stating that the emerald is of Colombian origin with indications of minor clarity enhancement

US\$130,000-140,000 AED480,000-510,000



112
AN EMERALD AND DIAMOND NECKLACE

The front designed as a fringe of thirteen slightly graduated pear-shaped emeralds within a micro pavé-set diamond surround interspaced with pear-shaped and trefoil diamond motifs suspended from a diamond line necklace to the similarly designed emerald and diamond pendant clasp,
41.0 cm long

US\$45,000-55,000

AED170,000-200,000



113

113
A PAIR OF DIAMOND CHANDELIER EAR PENDANTS

Each designed as an articulated rose-cut diamond chandelier to the pear-shaped rose-cut diamond central pendant and terminals,
8.5 cm long

US\$10,000-15,000 AED37,000-55,000

116
A PAIR OF DIAMOND EAR PENDANTS

Each designed as a circular-cut diamond weighing 3.71 and 3.24 carats with knife-edge spacer to the brilliant-cut diamond surmount, *1.5 cm long*
Accompanied by report 2105355802 dated 5 November 2008 from the Gemological Institute of America (GIA) stating that the diamond weighing 3.24 carats is L colour, SI2 clarity
Report 5101355795 dated 5 November 2008 from the GIA stating that the diamond weighing 3.71 carats is M, Faint Brown colour, VS2 clarity

US\$30,000-50,000 AED120,000-180,000

114
A PAIR OF DIAMOND EAR CLIPS

Each designed as a seven-stone pear-shaped diamond cluster,
2.5 cm long

US\$20,000-30,000 AED74,000-110,000

117
A DIAMOND SINGLE-STONE RING

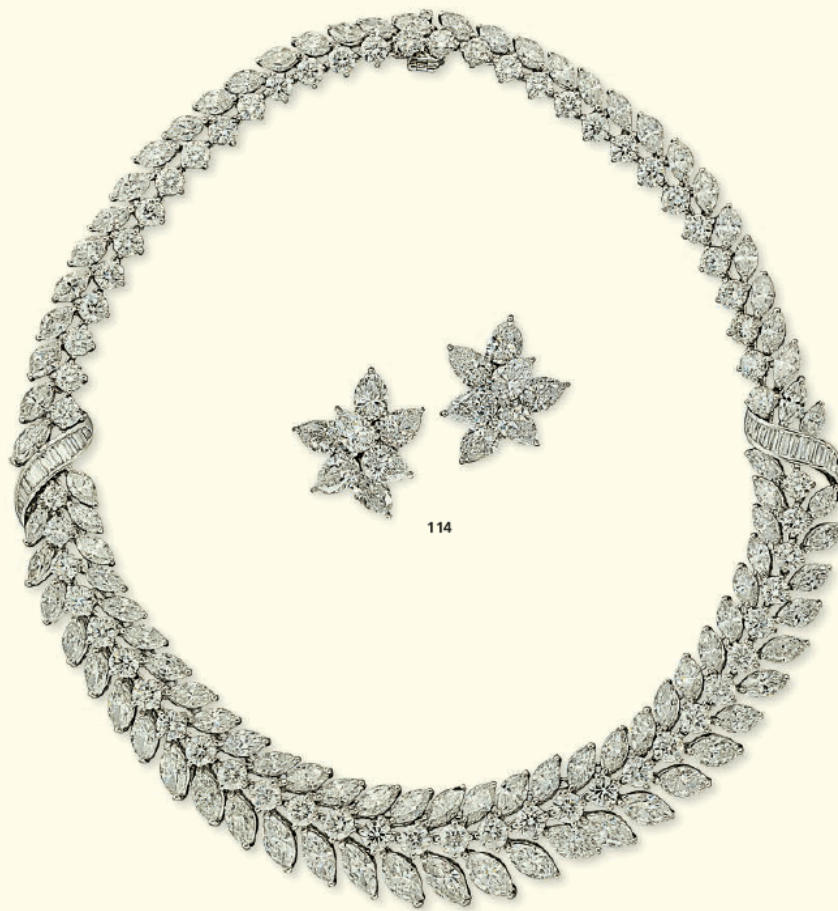
The marquise-shaped diamond weighing 8.74 carats to the tapered baguette-cut diamond shoulders and plain hoop, *ring size 6*

US\$50,000-70,000 AED190,000-260,000

115
A DIAMOND NECKLACE

Of foliate design, the front set with a brilliant-cut diamond line between two rows of slightly graduated marquise-cut diamonds gathered by baguette-cut diamond scrolls to the similarly designed backchain,
37.0 cm long

US\$120,000-150,000 AED450,000-550,000



114

115



116



117

118

A SUITE OF EMERALD AND DIAMOND JEWELLERY, BY TABBAH

The necklace designed as a rectangular-shaped emerald weighing 17.33 carats within a vari-cut diamond double surround suspended from marquise and brilliant-cut diamond lines at the front to the brilliant-cut diamond double line neckchain, with matching bracelet, ear clips and ring, necklace 39.5 long, bracelet 18.0 cm long, ear clips 2.9 cm long, ring size 7, rhodium plated (4)

Signed Tabbah

Accompanied by report 52416 dated 19 September 2008 from the Swiss Gemmological Institute (SSEF) stating that the (largest) emerald is of Colombian origin with moderate amounts of oil in fissures

US\$180,000-200,000

AED670,000-730,000



119

A PAIR OF DIAMOND EAR PENDANTS

Each designed as a brilliant-cut diamond weighing 5.29 and 5.07 carats, suspended from a diamond spacer and brilliant-cut diamond surmount weighing 3.07 and 3.06 carats to the diamond-set hook fitting, 4.8 cm long

Accompanied by six reports dated from 26 October 2008 to 27 May 2008 from the Gemological Institute of America (GIA) with the following details:

Report	Date	Colour	Clarity	Weight (carat)
2107145325	28 August 2008	F	VS1	0.80
17233764 27	May 2008	F	S12	0.86
16928530	26 March 2008	G	IF	3.07
16204169	26 October 2008	G	VVS2	3.06
17233060	22 May 2008	G	VS2	5.07
17233061	5 June 2008	H	S11	5.29

US\$300,000-500,000

AED1,200,000-1,800,000

120

A DIAMOND BRACELET

Of flexible lattice design, the wide tapered band composed of a series of brilliant-cut diamonds to the baguette-cut diamond spacers, 18.5 cm long

US\$80,000-120,000

AED300,000-440,000

121

A DIAMOND SINGLE-STONE RING

The brilliant-cut diamond weighing 4.02 carats to the broad bifurcated shoulders and plain hoop, ring size 7½

Accompanied by report 2105110407 dated 13 August 2008 from the Gemological Institute of America (GIA) stating that the diamond is G colour, VS1 clarity

US\$70,000-90,000

AED260,000-330,000

122

A DIAMOND SINGLE-STONE RING

The circular-cut diamond weighing 4.56 carats to the pierced gallery and plain hoop, ring size 5½

Accompanied by report 5101306892 dated 22 October 2008 from the Gemological Institute of America (GIA) stating that the diamond is F colour, VVS1 clarity

US\$100,000-140,000

AED370,000-510,000



120

119



121



122

Ψ123

A PAIR OF RUBY AND DIAMOND EAR CLIPS, BY HARRY WINSTON

Each set with an oval-shaped ruby weighing 6.01 and 5.07 carats to the marquise-cut diamond cluster surround, 2.9 cm long

With maker's mark for Harry Winston

Accompanied by reports 9300172 and 93001802 dated 8 March 1999 from the AGTA Gemological Testing Center stating that the rubies are of Burmese origin, with evidence of enhancement by heat

US\$30,000-40,000

AED120,000-150,000

Ψ124

A RUBY AND DIAMOND NECKLACE

Of V-shaped design, the front set with twenty-three oval-shaped rubies to the brilliant and marquise-cut diamond borders and necklace, 39.0 cm long

US\$60,000-80,000

AED230,000-290,000

125

A PAIR OF DIAMOND EAR STUDS

Each set with a circular-cut diamond weighing 12.56 and 11.65 carats, to the plain mount

Accompanied by report 2105355263 dated 5 November 2008 from the Gemological Institute of America (GIA) stating that the diamond weighing 12.56 carats is U to V colour range, VS1 clarity

Report 2105355256 dated 5 November 2008 from the GIA stating that the diamond weighing 11.65 carats is Q to R colour range, VS2 clarity

US\$150,000-200,000

AED560,000-730,000

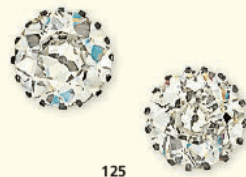
END OF SALE



124



123



125

INDEX

A

A. Lange & Söhne 10, 40-41, 46
Alain Silberstein 28
Audemars Piguet 8, 17, 30-31, 34-35,
37-38

B

Breguet 9, 11
Buccellati 47-49

C

Calleija 97
Cartier 77
Chopard 54-55
Chronoswiss 29
Corum 1, 21

F

Fabergé 25
Franck Muller 24
Franck Muller, Mauboussin, Etoile 2
Fred 69

G

Girard-Perregaux 32
Glashütte Original 27

H

Hublot 3

I

IWC 18

J

Jaeger-LeCoultre 16
Jorg Hysek 13

L

deLaCour 4, 6

M

Morris, David 61

O

Omega 36

P

Parmigiani 15, 20, 26
Patek Philippe 14, 39, 43-44
Piaget 45

R

Raymond Weil 12
Roger Dubuis 5
Rolex 22-23

S

Sanz 65

T

Tabbah 118

U

Ulysse Nardin 33

V

Van Cleef & Arpels 68, 70, 102
Vulcain 42

W

Winston, Harry 123

Y

Youssoufian, Michael 71

BIOGRAPHIES

AUDEMARS PIGUET

Audemars Piguet was founded in 1875 by Jules Audemars and Paul-Edouard Piguet in Le Brassus, Switzerland. Their first achievement was the creation of the Grande Complication, a pocket watch comprising three complicated mechanisms. They went on to develop the thinnest manual winding and repeating watches ever made, the first skeleton watch and the ultra-thin automatic perpetual calendar watch. Since 1992, Mrs. Jasmine Audemars descendant of the Audemars family, is Chair of the Board of Directors. The president of the company is Mr. Georges-Henri Meylan.

BREGUET

Abraham-Louis Breguet was born in 1747 in Neuchâtel, Switzerland. He founded his first shop in 1775 on the Ile de la Cité in Paris, providing his timepieces to such historical figures as Louis XVI, Marie-Antoinette and Napoleon I. He was known to all the European courts, as well as being the watchmaker of reference for diplomatic, scientific, military and financial elites. The firm remained in the hands of the Breguet family until the workshop foreman, Edward Brown took control. For the next 100 years, the firm passed down through three generations of his family. In the 1970s, watch production was moved entirely to the Joux Valley of Switzerland. In 1987, the firm was purchased by Investcorp. It is located in L'Abbaye, Switzerland. The firm has been acquired by the Swatch Group.

BUCCELLATI

In 1903, Mario Buccellati began an apprenticeship in goldsmithing at Beltrami e Besnati in Milan and in 1919, he opened his first shop in Via Santa Margherita. In the following years, the fame of Buccellati jewels began to attract the attention of royalty all over the world. In 1925, he opened a shop in Rome, in Via dei Condotti followed in 1929 by one in Florence, in Via Tornabuoni, and it was in 1953 that a shop in New York opened. In 1965, the three sons of Mario, who were goldsmiths themselves, decided to create their own company. Federico Buccellati runs the shop in Rome and in Milan, in Via della Spiga. He continued his father's activity by preserving all the ideas that had been instilled in him while they worked together. No matter what precious materials are employed, taste, beauty and personalization are the prime factors when a Buccellati jewel is created. Production is carried out today by 70 Italian craftsmen. Six licenses have been set up in the Tokyo and Osaka area, a new distributor has opened up in Sidney and the foreign sales network is to be extended in the near future. The tradition is maintained by Federico and now by his children Lorenzo, Rodolfo and Benedetta.

CALLEJA, JOHN

John Calleja founded his first workshop in Australia in 1985 at the age of 22. After becoming a successful wholesaler Calleja transferred his attentions to retail with shops located in Australia's Gold Coast as well as more recently London's Bond Street. Specialising in pink diamonds, Calleja places particular importance on the cut of a stone and travels the world to source the highest quality diamonds. He won the 1999 Australian Jewellery Award as well as the De Beers International design award in 2000 for his Virtual Eros Mask which adorned British fashion designer Alexander McQueen's New York catwalk that year.

CARTIER

Cartier was founded in Paris in 1847 by Louis-François Cartier. It was his three grandsons, Louis, Pierre and Jacques, who were responsible for establishing the famous world-wide empire. Louis retained responsibility for the Paris branch, moving it to the rue de la Paix in 1899. Jacques took charge of the London operation and eventually moved to the current location in New Bond Street. Pierre established the New York branch in 1909, moving in 1917 to the current location at 653 Fifth Avenue. Prominent amongst Cartier's gifted team, were Charles Jacquau who joined Louis Cartier in 1909 for a lifetime and Jeanne Toussaint who was appointed Director of Fine Jewellery from 1933. In the 1960s Cartier New York and Cartier Paris passed into outside hands. In 1972, a group of investors led by Joseph Kanoui bought Cartier Paris whose President became Robert Hocq, originator of the concept "Les Must de Cartier" in collaboration with Alain Dominique Perrin. In 1974, Cartier London was bought back and Cartier New York in 1976. In 1983, the "Art of Cartier Collection" was initiated by the late Eric Nusbaum. Today, Cartier is part of the Richemont group.

CHOPARD

Chopard was founded in 1860 by Louis-Ulyse Chopard in Sonvilier, Switzerland as creators of high precision pocket watches. Not having any heirs, the grandson of the original founder sold his company in 1963 to a German family, the Scheufele, who had already been in the jewellery and watch business for four generations. The firm manufactures all its watches and jewellery in Geneva in their own workshops. The Chopard collection consists of many famous lines such as "Happy Diamonds", "Casmir", "Happy Sport" and classical ladies' and gentlemen's watches as well as a wide range of jewellery products.

CORUM

Corum was founded in 1956 in La Chaux-de-Fonds, Switzerland, by Ren Bannwart and his uncle and cousin Gaston and Simone Ries. The firm, relatively young amongst the established Swiss watchmakers, is renowned today for its commitment to innovation and craftsmanship. In 2001, Severin Wunderman took over as the new owner of the company. His dynamic designs, such as the popular 'Boutique' series, have reinforced Corum's excellent reputation and have continued the tradition of luxurious Swiss watches.

ROGER DUBUIS

Founded by Carlos Dias in 1995 as SOGEM SA, the company laid claim to its current title of Manufacture in 1999. By 2001 Dias established building of the Manufacture Roger Dubuis which enables the process of verticalisation for the production of the brand's movement. Since achieving independence in 2003, Roger Dubuis conceives, develops and produces all their movement parts in-house. Remarkably, the entire brand production submits to the stringent demands of the Geneva Seal Hallmark and each movement carries this token of superlative quality. Roger Dubuis has also developed a highly exclusive jewellery concept that offers unique adornments representing heart-felt tributes.

FABERGE

Peter Carl Fabergé (1846-1920) is best known for the Easter eggs he began making in 1884 for the Tsar and Tsarina of Russia. After studying in several European centres, he began working for his father Gustav's firm. Upon his father's retirement in 1870, he took over the establishment. His international renown was secured in 1900 at the Paris Exposition. Afterwards, he began creating objects for Edward VII and other European royals. The firm's success continued until the 1917 Revolution when Fabergé escaped to Switzerland.

FRED

In 1936, Fred Samuel founded the jewellery firm which bears his name at 6 rue Royale in Paris, creating jewellery for such screen luminaries as Marlene Dietrich and Douglas Fairbanks. After the war, when business resumed its pre-war pace, he re-established his foothold in the world of "haute joaillerie", creating not only his trademark pearl jewellery, but also bold contemporary designs. The business expanded to the United States, beginning in 1977 with their first branch location in Beverly Hills, followed by Houston, and then Costa Mesa in 1995. They also have salons in Cannes, Monte Carlo and Tokyo. In 1995, the firm was purchased by the luxury group LVMH.

LANGE & SOHNE

A. Lange & Sohne was first established in 1868 by Aldolph Lange in the town of Glashütte, Saxony. The firm established itself as makers of distinctive timepieces. After a three year period of turmoil due to World War II, the factory was destroyed and in 1948 Lange & Sohne lost all of their assets to the new regional communist government. Shortly after 1951 the Lange Co. name ceased to exist. In 1990 two months after the reunification of Germany Mr. Walter Lange put A. Lange & Sohne back in to business. Using his great grandfather's journey book as a beacon, the company returned to horological eminence. The latest creations include an over-sized date window now incorporated in to a column wheel controlled by a fly-back feature. This "Datograph" epitomises the attention to aesthetics and mechanics found in all Lange timepieces, and reveals a family endowed with both drive and watch making prowess.

MAUBOUSSIN

In 1827, a Mr. Rocher and his cousin, Baptiste Noury, established a jewellery shop in Paris which, by 1850, had been taken over by Noury. His nephew, Georges Mauboussin, joined the firm, assuming control in 1896. The House of Mauboussin contributed exhibits to all major international exhibitions in the first half of the 20th century including Milan in 1923 and 1924; New York, 1924 and 1939; Strasbourg, 1924; and Paris 1925, 1931 and 1937. They were awarded the Grand Prix at the 1925 Exposition des Arts Décoratifs in Paris and, for his contributions to the world of joaillerie, Georges Mauboussin was given the "Légion d'Honneur". The firm opened branches in London and Buenos Aires which have subsequently closed. In October 1929, they opened an office in New York. Due to difficult times, they sold their stock to the jeweller Trabert & Hoeffler along with the right to use their name. All jewellery retailed under this contract was signed "Trabert & Hoeffler Inc. - Mauboussin". This relationship lasted until the 1950s. The firm is currently located at 20,

Place Vendôme. In 2002, Dominique Frémont, a Swiss businessman, acquired a majority of the firm with Patrick Mauboussin remaining involved in the creation of the jewellery.

GIRARD PERREGAUX

The company was established in 1856 when the watchmaker Constant Girard married Marie Perregaux, sister of a famous maker of chronometers. From the outset, the company aimed at setting new records in high precision work. In 1906, when watchmaking was flourishing, the company took over the Geneva atelier of Jean Francois Butte which had been established in 1791. Girard-Perregaux is celebrated for its pioneering developments in wristwatches and quartz movements as well as its chronometers and prestigious watches. The "Tourbillon with three gold Bridges" which was awarded two gold medals at the Universal Exhibitions of 1867 and 1889 remains no doubt its most important creation.

IWC

International Watch Co., or IWC, was established by an American engineer from Boston, Florentine Ariosto Jones, in the year 1868. Headquartered in Schaffhausen, north-east Switzerland, with unmistakable originals of chronometry, including the first "Grande Complication" for the wrist, the super-antimagnetic "Ingenieur", the diver's watches, which are capable of withstanding water pressure down to a depth of 2000 metres, and the professional Pilot's watches. IWC was acquired by Richemont SA in 2000.

JAEGER-LECOULTRE

In 1833 Antoine LeCoultre founded his watch company in the Joux Valley of Switzerland. Shortly after, he invented a machine for measuring the thousandth part of a millimetre, which established the firm as leaders in micromechanics. In 1903, the company invented the thinnest movement in the world, only 1.38mm. thick, and in 1929, the smallest mechanical movement in the world, measuring 14.00 x 4.85mm. In 1917, Edmond Jaeger went into business with Jacques-David LeCoultre, grandson of the founder, to form the modern company Jaeger-LeCoultre. Their most famous watch was designed and produced in 1931 and marketed under the name of the "Reverso", which is still being produced today. The firm has been acquired by the Richemont Group, one of the world's leading luxury goods company.

DAVID MORRIS

David Morris began working as a goldsmith in the 1960s and has been dedicated to bringing creative flare to the world ever since. Sparks flew when he quickly won two prestigious Diamond International awards, then launched his own business, attracting fashionable socialites, clients from showbusiness and discerning jewellery devotees with sophisticated international tastes.

Jeremy Morris who grew up alongside his father, is also passionate about innovation and ingenuity in jewellery design. He scours the globe for ideas to keep him one step ahead of fashion and design trends, and delves into jewellery history, updating themes and details to create exclusive, exquisitely refined jewels for today's most stylish and individual women. His work, has very quickly established him as a leading light in the new generation of fine jewellery designers.

As head of design, Jeremy oversees the Bond Street atelier. He cuts, polishes and sets the most precious of stones, including coloured diamonds and natural pearls. David Morris offer an enviable personal service, designing and creating exquisite pieces to individual specifications, using only the rarest of precious gemstones, sourced from around the world. David Morris also offers a bespoke engagement ring service.

This is not jewellery for the faint-hearted or those afraid attracting attention: pieces are daringly different and tantalizingly diverse: new cuts and shapes of diamonds, unusual gemstones used like painter's palette, new combinations of colour, texture, and form. Recent successes include the revival of rose-cut diamonds in Edwardian-inspired necklaces of the finest lace-like pave loops enclosing rose-cut diamond drops; and in a thrilling change of direction, a new range of dress watches using large diamonds and colored stones.

Showbusiness stars still can not resist the allure and glamour of David Morris jewellery. From the early days, he has enjoyed an association with Hollywood, providing stars such as Madonna, Pierce Brosnan, Catherine Zeta Jones and Elizabeth Taylor all dazzling in David Morris Splendor. He has also provided the diamonds for the James Bond films Diamonds Are Forever, Tomorrow Never Dies, and the World Is Not Enough, more recently, in Guy Ritchie's hit movie Snatch.

OMEGA

The watchmaking firm Omega was founded in 1848 by Louis Brandt in Le Chaux-de-Fonds, Switzerland. In 1880, it moved to its current location in Bienna, Switzerland. At the beginning, the company was not referred to as Omega. The name was later christened, in 1894, when a watch model, the "Omega" was launched. One of the world's better known watch companies, they have been the official timekeepers for the Olympic Games since 1932 and have also been supplying American and Russian astronauts with their "moon watch" since 1965 and 1975 respectively. The firm has been a member of the Swatch Group since 1983.

PATEK PHILIPPE

Patek Philippe was founded in 1839 by two Polish nationals, Antoine Norbert de Patek and Francois Czapek as Patek, Czapek & Co. In 1845, Patek joined forces with French watchmaker, Adrien Philippe. A great innovator, Philippe invented the modern stem-winding and setting mechanism for watches. The firm then developed the first keyless watch, one of the early versions of which was purchased by Queen Victoria at the world's first international trade fair - the Great Exhibition of 1851. The company went on to create an array of extremely complicated watches. Today, the company is run by the Stern family and is represented by about 350 watchmakers and jewellers worldwide.

PIAGET

Georges Piaget established his workshop in 1874 at La Côte-aux-Fées, Switzerland. He specialised in lever escapements before his rapidly growing company became a manufacturer. Supplier of watch movements to many world-famous brands, the family introduced watches under its own name only in the late 1940s, launching the brand world-wide in 1957, and opening the first showroom at 40 rue du Rhône, Geneva, in 1959. Piaget rapidly became the specialist of the world's thinnest watches, creating

them exclusively in gold and platinum, many enriched by precious stones. Pioneer of the stone dial in 1965, Piaget is regarded as a synonym for innovation in the luxury watch business. Since 1988, when Piaget joined the Vendôme Luxury Group, the company has upheld and consolidated its position as one of the main players in the field of top class horology as well as jewellery.

ROLEX

The company Rolex was set up by M. H. Wilsdorf in London in 1905 in order to launch the new fashion of wristwatches in Britain. The trade name Rolex was devised as it was short and easy to pronounce in most languages. In 1919 Wilsdorf relocated the company to Geneva and in 1926 invented the waterproof "Oyster" model, made famous by Mercedes Gleitze, who wore it when she swam the English Channel in record time. Rolex has won countless prizes for precision and records under hazardous conditions. Edmond Hillary wore a Rolex on his great Everest expedition and Jacques Piccard also wore one when he explored the depths of the ocean bed. Rolex, still located in Geneva, remains today one of the largest and most popular Swiss watch manufacturers.

SANZ

The firm of Sanz was founded in 1854 by Mr. Felipe Sanz at 36, Montera Street in Madrid. In 1912, his son, Juan, took over the family business relocated to 29, Montera Street. Their clientele includes many of the Royal Families of Europe as well as those of North Africa. The grandson of the founder, José Antonio, has headed the firm since 1940 and his son, Juan, opened a branch in Mexico City in 1981. This contact has led to the establishing of relations with Central America. Since 1983, Jaime Sanz has been the manager of the branch in Madrid and director of Sanz International.

TABBABH

A well-known jewellery dynasty of exceptional flair and virtuosity, Tabbabh's history dates back to the 17th century when the family was active in the printing of fine silk. In 1862, the Tabbabh jewellery house was founded in Beirut under the direction of Bechara Tabbabh. His unusual mastery of the trade allowed him to alter the focus from silk printing to the engraving of silver and gold and eventually to jewellery. Today, Nabil Tabbabh, a member of the fourth generation, has built up an international reputation. Starting with the first Tabbabh shop in Beirut, the company gradually moved further afield to Monte Carlo and Beverly Hills.

ULYSSE NARDIN

Founded in 1846 in Le Locle, Switzerland, Ulysse Nardin was named after its founder, Ulysse Nardin, an accomplished watchmaker. The collection is in the proud tradition of quality and mechanical innovation, and its excellence had been recognised by the award of 18 international gold medals and 4,300 first prizes in chronometric excellence. Historically Ulysse Nardin was best known for the manufacture of marine chronometers, sought by collectors around the world, and have seen service with the navies of some 50 countries. Today, Ulysse Nardin continues to develop and produce specialised timepieces of the highest technical level in limited editions, including the renowned Trilogy of Astrolabium, Planetarium and Tellurium; the Jaquemart Minute Repeater, the Hour Striker San Marco, and the Freak.



VAN CLEEF & ARPELS

Founded in 1906 by Alfred Van Cleef and his brothers-in-law Charles and Julien Arpels on the Place Vendôme in Paris, Van Cleef & Arpels is one of the world's most exquisite jewellers. The immediate success of the House prompted the founders to expand to important seaside resorts in France and well as abroad. New York City became the first location in the United States for Van Cleef & Arpels in 1939 and the House has since opened boutiques in five more U.S. cities. Van Cleef & Arpels is renowned for its innovative designs and techniques such as the Mysterious Setting, in which the prongs are hidden underneath a gemstone. The designs include only the highest quality gemstones and pieces are often interchangeable – brooches can become pendants or hair clips, earrings have detachable drops and bracelets can be linked together to create necklaces. Van Cleef & Arpels is currently part of the Richemont Group.

HARRY WINSTON

At the age of 24, Harry Winston opened his first business in New York City, known as the Premier Diamond Company. Twelve years later, he established another company under his own name and began to manufacture jewellery. Winston was responsible for the cutting of such famous diamonds as the Jonker, the Taylor-Burton, the Star of Sierra Leone, and the Vargas. He donated three important diamonds to the Smithsonian: The Hope, the Portuguese and the Oppenheimer. By the 1950s, Winston was acknowledged as the "King of Diamonds", owning at one time or another as many as one-third of all the famous diamonds in the world. In 1962 the company moved from 7 East Fifty-first Street to its present location at 718 Fifth Avenue. With his death in 1978, Winston was succeeded by his son, Ronald, now the chairman of the company, who continues his father's tradition of offering "Rare Jewels of the World", the firm's motto for many years. In an effort to address an ever-expanding market for their jewellery, the firm opened a salon in Tokyo in 1989 and one on Rodeo Drive in Beverly Hills the following year. They also created a watch department "The Ultimate Timepiece".

MICHAEL YOUSSEOUFIAN

Michael Yousseoufian comes from a long tradition of jewellers since 1865. His grandfather was appointed Jeweller to the Royal Courts of Egypt, His Royal Highness King Fouad and later King Farouk. In 1962, Michael's father, Alfred Yousseoufian, opened boutiques in Geneva, Rome and Capri. Michael attended the Art School in Geneva to master his painting skills and later to earn his degree as a jeweller craftsman. After many years in the jewellery business, Michael Yousseoufian moved to Hong Kong where he uses his palette of gemstones, decades of experience and love of the exotic to create exceptional jewellery.

COLOURLESS DIAMOND INDEX

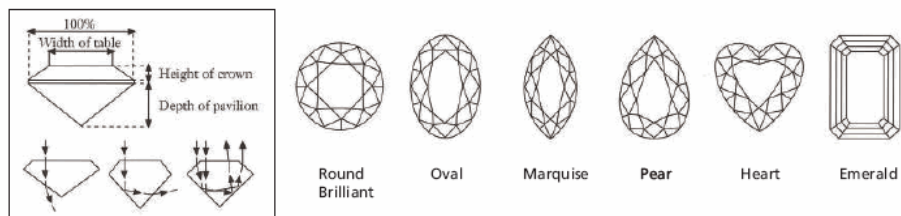
COLOUR	CLARITY	CARAT	CUT	LOT
D	IF	5.01	modified kite	94
D	VS1	4.30	rectangular	110
F	VVS1	4.56	circular	122
G/ G/ G/ H	IF/ VVS2/ VS2/ SI2	3.07/ 3.06/ 5.07/ 5.29	brilliant	119
G	VS1	4.02	brilliant	121
I	SI1	2.03/ 2.01	brilliant	80
K	SI1	1.54/ 1.52	pear	78
L/ M, faint brown	SI2/ VS2	3.24/ 3.71	circular	116
S-T / Y-Z	VVS1/ VS2	2.05/ 3.02	marquise/ heart	82
Q-R/ U-V	VS2/ VS1	11.65/ 12.56	circular	125

COLOURED DIAMOND INDEX

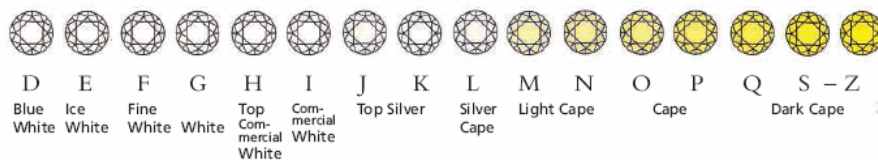
COLOUR	CLARITY	CARAT	CUT	LOT
Fancy Vivid Purplish Pink	I1	1.53	oval	98
Fancy Light Purplish Pink	SI2	1.52	pear	97
Fancy Light Bluish Green	N/A	0.23	brilliant	94

DIAMONDS • THE 4 C'S

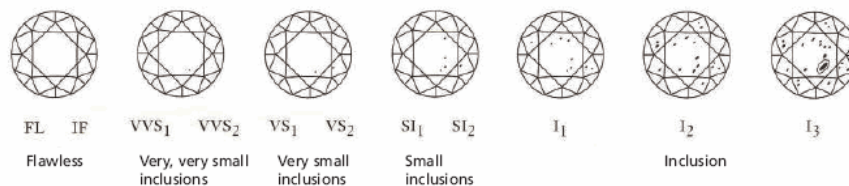
Cut



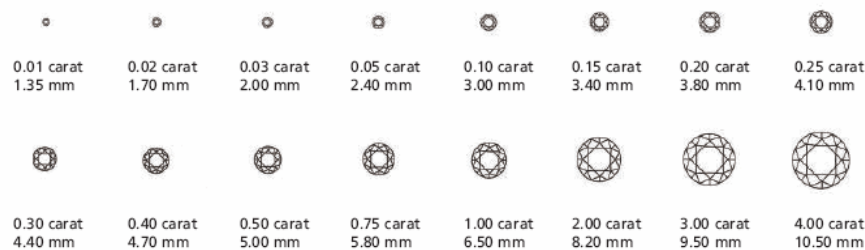
Colour (G.I.A.)



Clarity (G.I.A.)



Carat



Courtesy of Jewellers Network, the Southern African Jewellery Trade Directory, from information supplied by De Beers.
www.jewellersnetwork.co.za

CONVERSION CHART

RING SIZE

AMERICAN	FRENCH/JAPANESE	ENGLISH	METRIC
½	—	A	37.8252
1	—	A½	38.4237
1	—	B	39.0222
1¼	—	B½	39.6207
1½	—	C	40.2192
1¾	—	C½	40.8177
2	1	D	41.4162
2¼	2	D½	42.0147
2½	—	E	42.6132
2¾	3	E½	43.2117
3	4	F	43.8102
3¼	—	F½	44.4087
3½	5	G	45.0072
3¾	—	G½	45.6057
4	6	H	46.2042
4¼	—	H½	46.8027
4½	7	I	47.4012
4¾	8	I½	47.9997
5	—	J	48.5982
5¼	9	J½	49.1967
5½	10	K	49.7952
5¾	—	K½	50.3937
6	11	L	50.9922
6¼	—	L½	51.5907
6½	12	M	52.1892
6¾	13	M½	52.7877
7	—	N	53.4660
7¼	14	N½	54.1044
7½	15	O	54.7428
7¾	—	O½	55.3812
8	16	P	56.0196
8¼	—	P½	56.6580
8½	17	Q	57.2964
8¾	18	Q½	57.9348
9	—	R	58.5732
9¼	19	R½	59.2116
9½	20	S	59.8500
9¾	—	S½	60.4884
10	21	T	61.1268
10¼	22	T½	61.7652
10½	—	U	62.4026
10¾	23	U½	63.0420
11	24	V	63.6804
11¼	—	V½	64.3188
11½	25	W	64.8774
11¾	—	W½	65.4759
12	26	X	66.0744
12¼	—	X½	66.6729
12½	—	Y	67.2714
12¾	—	Y½	67.8699
13	—	Z	68.4684

MEASUREMENTS

INCHES	CM
—	—
—	1
—	2
1	3
—	4
2	5
—	6
—	7
3	8
—	9
4	10
—	11
—	12
5	13
—	14
6	15
—	16
—	17
7	18

IMPORTANT NOTICES AND EXPLANATION OF CATALOGUING PRACTICE

IMPORTANT NOTICES

CHRISTIE'S INTEREST IN PROPERTY CONSIGNED FOR AUCTION

From time to time, Christie's may offer a lot which it owns in whole or in part. Such property is identified in the catalogue with the symbol Δ next to its lot number.

On occasion, Christie's has a direct financial interest in lots consigned for sale, which may include guaranteeing a minimum price or making an advance to the consignee that is secured solely by consigned property. Such property is identified in the catalogue with the symbol ∇ next to the lot number. This symbol will be used both in cases where Christie's holds the financial interest on its own, and in cases where Christie's has financed all or part of such interest through third parties. When a third party agrees to finance all or part of Christie's interest in a lot, it takes on all or part of the risk of the lot not being sold, and will be remunerated in exchange for accepting this risk. The third party may also bid for the lot. Where it does so, and is the successful bidder, the remuneration may be netted against the final purchase price. If the lot is not sold, the third party may incur a loss. Where Christie's has an ownership or financial interest in every lot in the catalogue, Christie's will not designate each lot with a symbol, but will state its interest at the front of the catalogue.

ALL DIMENSIONS ARE APPROXIMATE

CONDITION

Christie's catalogues include references to condition only in descriptions of multiple works (such as prints, books and wine). For all other property, only alterations or replacement components are listed. Please contact the Specialist Department for a condition report on a particular lot. The nature of the lots sold in our auctions is such that they will rarely be in perfect condition, and are likely, due to their nature and age, to show signs of wear and tear, damage, other imperfections, restoration or repair. Any reference to condition in a catalogue entry will not amount to a full description of condition. Condition reports are usually available on request, and will supplement the catalogue description. In describing lots, our staff assess the condition in a manner appropriate to the estimated value of the item and the nature of the auction in which it is included. Any statement as to the physical nature or condition of a lot, in a catalogue, condition report or otherwise, is given honestly and with appropriate care. However, Christie's staff are not professional restorers or trained conservators and accordingly any such statement will not be exhaustive. We therefore recommend that you always view property personally, and, particularly in the case of any items of significant value, that you instruct your own restorer or other professional adviser to report to you in advance of bidding.

REGARDING COLOURED STONES

Prospective buyers are reminded that many coloured gemstones have historically been treated to enhance their appearance. Certain enhancement methods, such as heating, are commonly used to improve both colour or transparency, particularly in rubies and sapphires. Other methods, such as oiling, enhance the clarity of emeralds. These methods have been generally accepted by the international jewellery trade. Although heat enhancement of colour is widely believed to be permanent, it may have some impact on the durability of the gemstone and special care of the stone may be required over time. For example, gemstones which have been oiled may require re-oiling after a period of years to retain their maximum appearance.

It is Christie's policy to obtain gemmological reports from internationally recognised gemmological laboratories describing certain gemstones sold by Christie's. The availability of such reports will be disclosed in the catalogue. Reports from American gemmological laboratories used by Christie's will disclose any heat enhancement or treatment. European gemmological laboratory reports will disclose heat enhancement only if specifically requested but will confirm when no heat enhancement or treatment has been made. Because of variations in approach and technology there may not be consensus among laboratories as to whether any particular gemstone has been treated, the extent of treatment and whether treatment is permanent.

It is not feasible for Christie's to obtain a gemmological report for each gemstone offered by Christie's. Prospective buyers should be aware that all gemstones may have been enhanced by some method. For further details, prospective buyers in the United States are referred to the information chart prepared by the Gemstones Standards Commission, available in the viewing area. Prospective buyers may request laboratory reports for any uncertified item if requests are made at least three weeks before the scheduled date of auction. This service is subject to prepayment by the requesting party.

Because enhancement affects market value, Christie's estimates will reflect the information disclosed in a report or, if no report is available, the assumption that gemstones may have been enhanced.

Condition reports are usually available for all lots upon request and Christie's specialists will be happy to answer any questions.

NOTICE REGARDING BURMESE STONES

Items which contain rubies or jadeite originating in Burma (Myanmar) may not be imported into the U.S. As a convenience to our bidders, we have marked these lots with Ψ . Please be advised that a purchaser's inability to import any such item into the U.S. or any other country shall not constitute grounds for non-payment or cancellation of the sale. With respect to items that contain any other types of gemstones originating in Burma (e.g., sapphires), such items may be imported into the U.S., provided that the gemstones have been mounted or incorporated into jewellery outside of Burma and provided that the setting is not of a temporary nature (e.g., a string).

REGARDING ESTIMATED WEIGHTS

Certain weights in the catalogue have been estimated through measurement. These figures are to be used as approximate guidelines and should not be relied upon as exact.

LOTS OFFERED WITHOUT RESERVE

Please note that all lots highlighted with red titles in this sale are offered "Without Reserve". These items will be sold to the highest bidder, regardless of the pre-sale estimate printed in the catalogue. We hope that you will find this visual presentation helpful.

CATALOGUE EXCHANGE RATE:

US \$1 = AED 3.674

The rate of exchange was established at the latest practical date prior to the printing of the catalogue and may therefore have changed by the time of the sale.

Bidders should bear in mind that estimates are prepared well in advance of the sale and are not definitive. They are subject to revision.

IMPORTANT NOTICES AND EXPLANATION OF CATALOGUING PRACTICE

TO PROSPECTIVE BUYERS OF CLOCKS AND WATCHES

The description of the condition of clocks and watches in this catalogue, including references to defects and repairs, is provided as a service to prospective buyers, but such description is not necessarily complete. While Christie's will furnish a condition report on any lot to a prospective purchaser upon request, any such report may also be incomplete and may not specify all mechanical replacements or defects. Accordingly, all clocks and watches should be viewed personally by prospective buyers to evaluate the condition of the property offered for sale. All lots are sold "as is," and the absence of any reference to the condition of a clock or watch does not imply that the lot is in good condition and without defects, repairs or restorations. Virtually all clocks and watches have been repaired in the course of their normal useful lifetime and may now incorporate parts not original to them. Furthermore, Christie's makes no representation or warranty that any clock or watch is in working order. Watches are not always illustrated life size, buyers should refer to the catalogue description for the dimensions of each watch.

It should be noted that most wristwatches with water-resistant cases have been opened to identify type and quality of movement. It cannot be assumed that the watches are still waterproof and purchasers are advised to have the watches checked by a competent watch-maker before use.

Please note that gold of less than 18ct. does not qualify in all countries as 'gold' and may be refused import. Christie's cannot accept liability if import is refused.

Please note that all Rolex watches in the Christie's sale catalogue are sold as viewed and that Christie's cannot guarantee the authenticity of any individual component part of these Rolex watches. The bracelets described as "associated" are not part of the original piece and may not be authentic.

Prospective buyers should satisfy themselves by personal inspection as to the condition of each Lot. Condition reports can be requested from Christie's and are given 'without prejudice' in accordance with the terms of the conditions of sale and limited warranty printed in the back of the catalogue.

Nevertheless, such reports are for general guidance only and will not specify all mechanical replacements or imperfections. Such reports will, of necessity, be subjective. Buyers are advised that certificates are not available unless otherwise stated. As collectors' watches often contain extremely fine and complex mechanisms, buyers should be aware that a general service, change of battery or further repair work, for which the buyer is solely responsible, may be necessary.

REGARDING IMPORTATION OF WATCHES INTO THE US

Prospective buyers should be aware that the importation of luxury watches such as Rolex into the United States is highly restricted. These watches may not be shipped into the USA and can only be imported personally. Generally, a buyer may import only one watch into the USA. In this catalogue, these watches have been marked with a Φ .

It is the buyer's responsibility to determine whether there are any import restrictions and to comply with such restrictions. The failure by Christie's to mark a lot with a Φ shall not constitute grounds to rescind or cancel a sale.

For further information, please contact our specialists in charge of the sale.

PROPERTY INCORPORATING MATERIALS FROM ENDANGERED AND OTHER PROTECTED SPECIES

Property made of or incorporating (irrespective of percentage) endangered and other protected species of wildlife are marked with the symbol (**) in the catalogue. Such material includes, among other things, ivory, tortoiseshell, crocodile skin, rhinoceros horn, whale bone and certain species of coral, together with Brazilian rosewood. Prospective purchasers are advised that several countries prohibit altogether the importation of property containing such materials, and that other countries require a permit (e.g., a CITES permit) from the relevant regulatory agencies in the countries of exportation as well as importation. Accordingly, clients should familiarize themselves with the relevant customs laws and regulations prior to bidding on any property with wildlife material if they intend to import the property into another country. For example, the U.S. generally prohibits the importation of articles containing species that it has designated as endangered or threatened if those articles are less than 100 years old.

Please note that it is the client's responsibility to determine and satisfy the requirements of any applicable laws or regulations applying to the export or import of property containing endangered and other protected wildlife material. The inability of a client to export or import property containing endangered and other protected wildlife material is not a basis for cancellation or rescission of the sale. Please note also that lots containing potentially regulated wildlife material are marked as a convenience to our clients, but Christie's does not accept liability for errors or for failing to mark lots containing protected or regulated species.

REGARDING THE EXPORT OF WATCH BANDS INCORPORATING MATERIALS FROM ENDANGERED SPECIES

Many of the watches offered for sale in this catalogue have bands which may be made of endangered or protected animal materials such as alligator or crocodile and which may not lawfully be exported from the sales site without a CITES export permit. As explained above, these lots are marked with the symbol (**) in the catalogue. Accordingly, for purchased watches that are to be shipped out of the sales site for delivery, Christie's will remove and retain the band before shipping the watch and buckle.

EXPLANATION OF CATALOGUING PRACTICE

FOR JEWELLERY

Terms used in this catalogue have the meanings ascribed to them below. Please note that all statements in this catalogue as to Authorship are made subject to the provisions of the CONDITIONS OF SALE and LIMITED WARRANTY.

Jewellers in the Title

1. By Boucheron

When maker's name appears in the title, in Christie's qualified opinion it is by that maker.

Jewellers beneath the description

2. Signed Boucheron

Has signature which in Christie's qualified opinion is authentic.

3. With maker's mark for Boucheron

Has a mark denoting a maker which in Christie's qualified opinion is authentic.

4. By Boucheron

In Christie's qualified opinion the object is by the jeweller although unsigned.

5. Mounted by Boucheron

In Christie's qualified opinion the setting has been created by the jeweller using stones originally supplied by the jeweller's client.

6. Mount only by Boucheron

In Christie's qualified opinion the mounting is by the jeweller, but either the gemstones have been replaced or the piece has been altered in some way after its manufacture.

Periods

1. Antique

Over 100 years old

2. Art Nouveau

1895-1910

3. Belle Epoque

1895-1914

4. Art Deco

1915-1935

5. Retro

1940s

BUYING AT CHRISTIE'S

CONDITIONS OF SALE

Christie's Conditions of Sale and Limited Warranty are set out later in this catalogue. Bidders are strongly encouraged to read these as they set out the terms on which property is bought at auction.

ESTIMATES

Estimates are based upon prices recently paid at auction for comparable property, condition, rarity, quality and provenance. Estimates are subject to revision. Buyers should not rely upon estimates as a representation or prediction of actual selling prices. Estimates do not include the buyer's premium.

Where "Estimate on Request" appears, please contact the Specialist Department for further information.

RESERVES

The reserve is the confidential minimum price the consignor will accept and will not exceed the low pre-sale estimate. Lots that are not subject to a reserve are highlighted with red titles in this sale.

BUYER'S PREMIUM

Christie's charges a premium to the buyer on the final bid price of each lot sold at the following rates: 25% of the final bid price of each lot up to and including US\$50,000, 20% of the final bid price of each lot above US\$50,000 and up to and including US\$1,000,000 and 12% of the excess of the hammer price above US\$1,000,000. For all lots, taxes are payable on the premium at the applicable rate.

PRE-AUCTION VIEWING

Pre-auction viewings are open to the public free of charge. Christie's specialists are available to give advice and condition reports at viewings or by appointment.

BIDDER REGISTRATION

Prospective buyers should register for a numbered bidding paddle at least 30 minutes before the sale. New clients, or those who have not made a recent purchase at Christie's, may be asked to supply identification and/or a bank reference to register. To avoid any delay in the release of purchases, please pre-arrange cheque or credit approval through Christie's Credit Department at +44 (0)20 7389 2825 or by fax at +44 (0)20 7389 2863.

BIDDING

The auctioneer accepts bids from those present in the saleroom, from telephone bidders, or by absentee written bids left with Christie's in advance of the auction. The auctioneer may also execute bids on behalf of the seller up to the amount of the reserve. The auctioneer will not specifically identify bids placed on behalf of the seller. Under no circumstances will the auctioneer place any bid on behalf of the seller at or above the reserve. Bid steps are shown on the Absentee Bid Form at the back of this catalogue.

ABSENTEE BIDS

Christie's staff will attempt to execute an absentee bid at the lowest possible price taking into account the reserve price. Absentee bids submitted on "no reserve" lots will, in the absence of a higher bid, be executed at approximately 50% of the low pre sale estimate or at the amount of the bid if it is less than 50% of the low pre-sale estimate. The auctioneer may execute absentee bids directly from the rostrum, clearly identifying these as "absentee bids," "book bids," "order bids" or "commission bids." Absentee Bid Forms are available in this catalogue, at any Christie's location or online at christies.com.

TELEPHONE BIDS

Telephone bids will be accepted for lots with low-end estimates of US\$1,500 and above, where arrangements are made no later than 24 hours prior to the sale and only if the capacity of our pool of staff telephone bidders allows. Arrangements to bid in languages other than English must be made well in advance of the sale date.

Telephone bids may be recorded. By bidding on the telephone, prospective purchasers consent to the recording of their conversations.

Christie's offers all absentee and telephone bidding services as a convenience to our clients, but will not be responsible for errors or failures to execute bids.

SUCCESSFUL BIDS

While invoices are sent out by mail after the auction, we do not accept responsibility for notifying you of the result of your bids. Buyers are requested to contact us by telephone or in person as soon as possible after the sale to obtain details of the outcome of their bids to avoid incurring unnecessary storage charges. Successful bidders will pay the price of the final bid plus premium plus any applicable taxes.

PAYMENT

Buyers are required to pay for purchases immediately after the auction. **Please note Christie's does not accept payment from third parties. Christie's can only accept payment from the client, and not from the person bidding on their behalf.** Payment may be made by personal cheque, bank wire transfers, credit cards (Visa, Mastercard), debit cards (Visa Delta, Switch, Maestro), cash (in US currency up to \$7,500), travellers cheques (in US currency up to \$7,500) and money orders (in US currency up to \$7,500). To avoid delivery delays, prospective buyers are encouraged to supply bank or other suitable references before the auction. For wire transfers, payment should be made to JP MORGAN CHASE MANHATTAN BANK NA, NEWYORK, USA

SWIFT: CHASUS33

ABA: 021000021

For credit to: Lloyds TSB Bank PLC
City Office Branch
72 Lombard Street
London EC3

SWIFT: LOYDGB2LCTY

For further credit to the account of: Christie, Manson & Woods
Limited Dubai

Account Number GB25LOYD3096341159909

Please note that Christie's will be unable to accept payments from Iran. Christie's reserve the right to amend these payment terms at any time at its discretion

IMPORT DUTY

JEWELS

All jewels lots offered for sale have been imported and can be freely disposed of within UAE. There is no further duty due within UAE.

WATCHES AND CLOCKS

All watches and clocks offered for sale (identified with the symbol *) are subject to a 5% import duty on the importation value (low estimate) levied at the time of collection/shipment within UAE. It is the Buyer's responsibility to ascertain and pay all taxes due. For more information, please contact Buyers Payments at +971 (0)4 425 5647.

LOOSE PEARLS AND SILVER BOXES

All loose pearls and silver boxes offered for sale (identified with the symbol *) are subject to a 5% import duty on the importation value (low estimate) levied at the time of collection/shipment within UAE. It is the Buyer's responsibility to ascertain and pay all taxes due. For more information, please contact Buyers Payments at +971 (0)4 425 5647.

EXPORT

JEWELS

All purchased lots can be exported from UAE and there are no duty refunds applicable.

WATCHES AND CLOCKS

If purchased lots are exported by Christie's Logistics and Service Provider, Brinks Global Services FZE, Dubai, then there is no duty applicable but only custom clearance/handling charges. It is the Buyer's responsibility to ascertain and pay all charges due. For more information, please contact Buyers Payments at +971 (0)4 425 5647.

LOOSE PEARLS AND SILVER BOXES

If purchased lots are exported by Christie's Logistics and Service Provider, Brinks Global Services FZE, Dubai, then there is no duty applicable but only custom clearance/handling charges. It is the Buyer's responsibility to ascertain and pay all charges due. For more information, please contact Buyers Payments at +971 (0)4 425 5647.

SHIPPING

It is the buyer's responsibility to pick up purchases or make all shipping arrangements. After payment has been made in full including duty, if applicable, and customs clearance/handling charges, Brinks Global, can arrange for domestic and international door to door deliveries at the Buyer's request and expense. For more information please contact Brinks Global Services FZE, attention Mr. Craig Cummings on
Tel: +971 (0)4 299 6936
Mobile: +971 (0)50 652 4257
Fax: +971 (0)4 299 6948
Email: craig.cummings@brinksinc.com

IMPORT PERMITS

Property sold at auction may be subject to import restrictions of foreign countries. It is the buyer's sole responsibility to obtain any relevant import license. The denial of any license or any delay in obtaining licenses shall neither justify the rescission of any sale nor any delay in making full payment for the lot. Upon request, Christie's will assist the buyer in submitting applications to obtain the appropriate licenses. However, Christie's cannot ensure that a license will be obtained. Local laws may prohibit the import of some property and/or may prohibit the resale of some property in the country of importation. No such restriction shall justify the rescission of any sale or delay in making full payment for the lot.

STORAGE, COLLECTION, PAYMENTS AND DELIVERIES

STORAGE AND COLLECTION

Buyers are advised that all purchases not collected by and the day following the sale will be held for collection at no charge for 30 days. After 30 days from the date of the auction, there will be a minimum charge of \$10 per lot per day.

COLLECTION TIMES

Items can be collected at the Jumeirah Emirates Towers Hotel as follows:
Tuesday 28 April until 1 hour after the end of the sale and Wednesday 29 April, from 12 noon - 5 p.m.

After this, items can be collected by appointment against a collection order issued by Christie's at:
Brinks Global Services FZE
Dubai Airport Free Zone
Warehouse C-6, Dubai, UAE.
Office Hours: 8am - 5pm, Sunday until Thursday. Contact Mr Craig Cummings on
Tel: +971 (0)4 299 6936
Mobile: +971 (0)50 652 4257
Fax: +971 (0)4 299 6948
Email: craig.cummings@brinksinc.com

PAYMENTS

Lots may only be released from Brinks Global Services FZE on production of the collection order from Christie's, 8 King Street, London SW1, or Christie's, Level 4, Precinct Building 5, Office 406, Dubai International Financial Center, PO Box 506685, Dubai, UAE. Lots will not be released until all outstanding charges, duty due to Christie's and Brinks Global Services FZE are settled.

DELIVERIES

We can offer on-site delivery, pick-up arrangements, airfreight shipments and domestic deliveries within UAE through our exclusive Service and Logistic Provider, Brinks Global Services FZE
Dubai Airport Free Zone
Warehouse C-6, Dubai, UAE. For more information and quotes, please contact Mr Craig Cummings on
Tel: +971 (0)4 299 6936
Mobile: +971 (0)50 652 4257
Fax: +971 (0)4 299 6948
Email: craig.cummings@brinksinc.com

INSURANCE

As set out in the Condition of Sale, paragraph 3 (j), risk and responsibility for the lot passes to the buyer at the expiration of seven calendar days from the date of sale or on collection by the buyer if earlier. Buyers are reminded that it is their responsibility to arrange adequate insurance for purchased lots

Method	Where	Watches per consignment Duty/Charges Due	Jewels per consignment Duty/Charges Due	Payment Method
On-site delivery Pick-up at Brink's Global Services (by appointment)	At Emirates Towers At Dubai Airport Free Zone, C-6	5% duty plus \$75 for customs clearance and handling charges	Duty free, \$50 handling charges	Must be prepaid at Christies
Domestic Deliveries	Dubai City Limits	5% duty plus \$75 for customs clearance and handling plus delivery charges of \$0.05 per 1000 of value or min. of \$55 per trip	Duty free, \$50 handling plus delivery charges of \$0.05 per 1000 of value or min. of \$55 per trip	Must be prepaid at Christies
	Outside Dubai City Limits	same as above except delivery charges of \$0.05 per 1000 of value or min. of \$95 per trip	same as above except delivery charges of \$0.05 per 1000 of value or min. \$95 per trip	Must be prepaid at Christies
	Abu Dhabi	same as above except delivery charges upon request	same as above except delivery charges upon request	Must be prepaid at Christies

Export Shipments (Duty Free)	Base Rate	Weight Included	Valuation charges	Service Type Collect
Hong Kong	\$400	4 kg, \$29.20 per addit. kg	\$0.225 per 1000	Door to Door
New York	\$450	4 kg, \$33.50 per addit. kg	\$0.225 per 1000	Door to Door
Los Angeles	\$550	4 kg, \$33.50 per addit. kg	\$0.225 per 1000	Door to Door
Geneva	\$475	4 kg, \$15.20 per addit. kg	\$0.225 per 1000	Door to Door
London	\$450	4 kg, \$16.75 per addit. kg	\$0.225 per 1000	Door to Door

All export shipments from Dubai are subject to an Export Customs fee of \$11 or At Actual.
All export shipments will be delivered to business addresses only and the quoted charges are for delivery within city limits at destination
Customs clearance and processing at destination will be on the account of the consignee

CONDITIONS OF SALE

These Conditions of Sale and the Important Notices and Explanation of Cataloguing Practice set out the terms governing the legal relationship of Christie's and the seller with the buyer. You should read them carefully before bidding.

1. CHRISTIE'S AS AGENT

Except as otherwise stated Christie's acts as agent for the seller. The contract for the sale of the property is therefore made between the seller and the buyer.

2. CATALOGUE DESCRIPTIONS AND CONDITION

Lots are sold as described and otherwise in the condition they are in at the time of the sale, on the following basis.

(a) Condition

The nature of the lots sold in our auctions is such that they will rarely be in perfect condition, and are likely, due to their nature and age, to show signs of wear and tear, damage, other imperfections, restoration or repair. Any reference to condition in a catalogue entry will not amount to a full description of condition. Condition reports are usually available on request, and will supplement the catalogue description. In describing lots, our staff assess the condition in a manner appropriate to the estimated value of the item and the nature of the auction in which it is included. Any statement as to the physical nature or condition of a lot, in a catalogue, condition report or otherwise, is given honestly and with appropriate care. However, Christie's staff are not professional restorers or trained conservators and accordingly any such statement will not be exhaustive. We therefore recommend that you always view property personally, and, particularly in the case of any items of significant value, that you instruct your own restorer or other professional adviser to report to you in advance of bidding.

(b) Cataloguing Practice

Our cataloguing practice is explained in the Important Notices and Explanation of Cataloguing Practice, which appear after the catalogue entries.

(c) Attribution etc

Any statements made by Christie's about any lot, whether orally or in writing, concerning attribution to, for example, an artist, school, or country of origin, or history or provenance, or any date or period, are expressions of our opinion or belief. Our opinions and beliefs have been formed honestly and in accordance with the standard of care reasonably to be expected of an auction house of Christie's standing, due regard having been had to the estimated value of the item and the nature of the auction in which it is included. It must be clearly understood, however, that, due to the nature of the auction process, we are unable to carry out exhaustive research of the kind undertaken by professional historians and scholars, and also that, as research develops and scholarship and expertise evolve, opinions on these matters may change. We therefore recommend that, particularly in the case of any item of significant value, you seek advice on such matters from your own professional advisers.

(d) Estimates

Estimates of the selling price should not be relied on as a statement that this is the price at which the item

will sell or its value for any other purpose.

(e) Fitness for Purpose

Lots sold are enormously varied in terms of age, category and condition, and may be purchased for a variety of purposes. Unless otherwise specifically agreed, no promise is made that a lot is fit for any particular purpose.

3. AT THE SALE

(a) Refusal of admission
Christie's has the right, at our complete discretion, to refuse admission to the premises or participation in any auction and to reject any bid.

(b) Registration before bidding

Prospective buyers must complete and sign a registration form with his or her name and permanent address, and provide identification before bidding. We may require the production of bank details from which payment will be made or other financial references.

(c) Bidding as principal

When making a bid, a bidder is accepting personal liability to pay the purchase price, including the buyer's premium and any applicable taxes, plus all other applicable charges, unless it has been explicitly agreed in writing with Christie's before the commencement of the sale that the bidder is acting as agent on behalf of an identified third party acceptable to Christie's, and that Christie's will only look to the principal for payment.

(d) Absentee bids

We will use reasonable efforts to carry out written bids delivered to us prior to the sale for the convenience of clients who are not present at the auction in person, by an agent or by telephone. Bids must be placed in the currency of the place of the sale. Please refer to the catalogue for the Absentee Bids Form. If we receive written bids on a particular lot for identical amounts, and at the auction these are the highest bids on the lot, it will be sold to the person whose written bid was received and accepted first. Execution of written bids is a free service undertaken subject to other commitments at the time of the sale and provided that we have exercised reasonable care in the handling of written bids, the volume of goods is such that we cannot accept liability in any individual instance for failing to execute a written bid or for errors and omissions in connection with it arising from circumstances beyond our reasonable control.

(e) Telephone bids

If a prospective buyer makes arrangements with us prior to the commencement of the sale we will use reasonable efforts to contact them to enable them to participate in the bidding by telephone but we do not accept liability for failure to do so or for errors and omissions in connection with telephone bidding arising from circumstances beyond our reasonable control.

(f) Currency converter

At some auctions a currency converter may be operated. Errors may occur in the operation of the currency converter. Where these arise from circumstances beyond our reasonable control we do not accept liability to bidders who follow the currency converter rather than the actual bidding in the saleroom.

(g) Video or digital images

At some auctions there may be a video or digital screen. Errors may occur in its operation and in the quality of the image. We do not accept liability for such errors where they arise for reasons beyond our reasonable control.

(h) Reserves

Unless otherwise indicated, all lots are offered subject to a reserve, which is the confidential minimum price below which the lot will not be sold. The reserve will not exceed the low estimate printed in the catalogue. Lots that are not subject to a reserve are highlighted with red titles in this sale. The auctioneer may open the bidding on any lot below the reserve by placing a bid on behalf of the seller. The auctioneer may continue to bid on behalf of the seller up to the amount of the reserve, either by placing consecutive bids or by placing bids in response to other bidders.

(i) Auctioneer's discretion

The auctioneer has the right to exercise reasonable discretion in refusing any bid, advancing the bidding in such a manner as he may decide, withdrawing or dividing any lot, combining any two or more lots and, in the case of error or dispute, and whether during or after the sale, determining the successful bidder, continuing the bidding, cancelling the sale or reoffering and reselling the item in dispute. If any dispute arises after the sale, then, in the absence of any evidence to the contrary the sale record maintained by the auctioneer will be conclusive.

(j) Successful bid and passing of risk

Subject to the auctioneer's reasonable discretion, the highest bidder accepted by the auctioneer will be the buyer and the striking of his hammer marks the acceptance of the highest bid and the conclusion of a contract for sale between the seller and the buyer. Risk and responsibility for the lot (including frames or glass where relevant) passes to the buyer at the expiration of seven calendar days from the date of the sale or on collection by the buyer if earlier.

4. AFTER THE SALE

(a) Buyer's premium

Christie's charges a premium to the buyer on the final bid price of each lot sold at the following rates: 2.5% of the final bid price of each lot up to and including US\$50,000, 2.0% of the final bid price of each lot above US\$50,000 and up to and including US\$1,000,000 and 1.2% of the excess of the hammer price above US\$1,000,000. For all lots, taxes are payable on the premium at the applicable rate.

(b) Payment and ownership

The buyer must pay the full amount due (comprising the hammer price, buyer's premium and any applicable taxes) immediately after the sale. The buyer will not acquire title to the lot until all amounts due to us from the buyer have been received by us in good cleared funds even in circumstances where we have released the lot to the buyer.

(c) Collection of purchases

We shall be entitled to retain items sold until all amounts due to us, or to Christie's International plc, or to any of its affiliates, subsidiaries or parent companies worldwide, have been received in full in good cleared funds or until the buyer has performed any other outstanding obligations. Subject to this, the buyer shall collect purchased lots as of Saturday 1 November 2008.

(d) Packing, handling and shipping

Although we shall use reasonable efforts to take care when handling, packing and shipping a purchased lot and in selecting third parties for these purposes, we are not responsible for the acts or omissions of any such third parties. Similarly, where we suggest other handlers, packers or carriers if so requested, we are not responsible to any person to whom we have made a recommendation for the acts or omissions of the third party concerned.

(e) Remedies for non payment

If the buyer fails to make payment in full in good cleared funds within 7 days after the sale, we shall have the right to exercise a number of legal rights and remedies. These include, but are not limited to, the following:

- (i) to charge interest at an annual rate equal to 5% above the base rate of Lloyds TSB Bank Plc;
- (ii) to hold the defaulting buyer liable for the total amount due and to commence legal proceedings for its recovery together with interest, legal fees and costs to the fullest extent permitted under applicable law;
- (iii) to cancel the sale;
- (iv) to resell the property publicly or privately on such terms as we shall think fit;
- (v) to pay the seller an amount up to the net proceeds payable in respect of the amount bid by the defaulting buyer;
- (vi) to set off against any amounts which we, or Christie's International plc, or any of its affiliates, subsidiaries or parent companies worldwide, may owe the buyer in any other transactions, the outstanding amount remaining unpaid by the buyer;
- (vii) where several amounts are owed by the buyer to us, or to Christie's International plc, or to any of its affiliates, subsidiaries or parent companies worldwide, in respect of different transactions, to apply any amount paid to discharge any amount owed in respect of any particular transaction, whether or not the buyer so directs;
- (viii) to reject at any future auction any bids made by or on behalf of the buyer or to obtain a deposit from the buyer before accepting any bids;
- (ix) to exercise all the rights and remedies of a person holding security over any property in our possession owned by the buyer, whether by way of pledge, security interest or in any other way, to the fullest extent permitted by the law of the place where such property is located. The buyer will be deemed to have granted such security to us and we may retain such property as collateral security for such buyer's obligations to us;
- (x) to take such other action as we deem necessary or appropriate.

If we resell the property under paragraph (iv) above, the defaulting buyer shall be liable for payment of any deficiency between the total amount originally due to us and the price obtained upon resale as well as for all reasonable costs, expenses, damages, legal fees and commissions and premiums of whatever kind associated with both sales or otherwise arising from the default. If we pay any amount to the seller under paragraph (v) above, the buyer acknowledges that Christie's shall have all of the rights of the seller, however arising, to pursue the buyer for such amount.

(f) Selling Property at Christie's

In addition to expenses such as transport, all consignors pay a commission according to a fixed scale of charges based upon the value of the property sold by the consignor at Christie's in a calendar year. Commissions are charged on a sale by sale basis.

5. LIMITED WARRANTY

In addition to Christie's liability to buyers set out in clause 2 of these Conditions, but subject to the terms and conditions of this paragraph, Christie's warrants for a period of five years from the date of the sale that any property described in headings printed in UPPER CASE TYPE (i.e. headings having all capital-letter type) in this catalogue (as such description may be amended by any saleroom notice or announcement) which is stated without qualification to be the work of a named author or authorship, is authentic and not a forgery. The term "author" or "authorship" refers to the creator of the property or to the period, culture, source or origin, as the case may be, with which the creation of such property is identified in the UPPER CASE description of the property in this catalogue. Only UPPER CASE TYPE headings of lots in this catalogue indicate what is being warranted by Christie's. Christie's warranty does not apply to supplemental material which appears below the UPPER CASE TYPE headings of each lot and Christie's is not responsible for any errors or omissions in such material. The terms used in the headings are further explained in Important Notices and Explanation of Cataloguing Practice. The warranty does not apply to any heading which is stated to represent a qualified opinion. The warranty is subject to the following:

- (i) It does not apply where (a) the catalogue description or saleroom notice corresponded to the generally accepted opinion of scholars or experts at the date of the sale or fairly indicated that there was a conflict of opinions; or (b) correct identification of a lot can be demonstrated only by means of either a scientific process not generally accepted for use until after publication of the catalogue or a process which at the date of publication of the catalogue was unreasonably expensive or impractical or likely to have caused damage to the property.
- (ii) The benefits of the warranty are not assignable and shall apply only to the original buyer of the lot as shown on the invoice originally issued by Christie's when the lot was sold at auction.
- (iii) The original buyer must have remained the owner of the lot without disposing of any interest in it to any third party.

- (iv) The buyer's sole and exclusive remedy against Christie's and the seller, in place of any other remedy which might be available, is the cancellation of the sale and the refund of the original purchase price paid for the lot. Neither Christie's nor the seller will be liable for any special, incidental or consequential damages including, without limitation, loss of profits nor for interest.
- (v) The buyer must give written notice of claim to us within five years from the date of the auction. It is Christie's general policy, and Christie's shall have the right, to require the buyer to obtain the written opinions of two recognised experts in the field, mutually acceptable to Christie's and the buyer, before Christie's decides whether or not to cancel the sale under the warranty.
- (vi) The buyer must return the lot to the Christie's saleroom at which it was purchased in the same condition as at the time of the sale.

6. COPYRIGHT

The copyright in all images, illustrations and written material produced by or for Christie's relating to a lot including the contents of this catalogue, is and shall remain at all times the property of Christie's and shall not be used by the buyer, nor by anyone else, without our prior written consent. Christie's and the seller make no representation or warranty that the buyer of a property will acquire any copyright or other reproduction rights in it.

7. SEVERABILITY

If any part of these Conditions of Sale is found by any court to be invalid, illegal or unenforceable, that part shall be discounted and the rest of the conditions shall continue to be valid to the fullest extent permitted by law.

8. LAW AND JURISDICTION

The rights and obligations of the parties with respect to these Conditions of Sale, the conduct of the auction and any matters connected with any of the foregoing shall be governed and interpreted by the laws of the United Arab Emirates. By bidding at auction, whether present in person or by agent, by written bid, telephone or other means, the buyer shall be deemed to have agreed that any dispute arising out of or in connection with the matters referred to above shall, at Christie's option, be referred to arbitration in accordance with the Dubai Chamber of Commerce and Industry or to the courts of the domicile of the buyer.

[Please note an Arabic version of the Conditions of Sale is available upon request].

WORLDWIDE SALEROOMS AND OFFICES

ARGENTINA

BUENOS AIRES
+54 11 43 93 42 22
Cristina Carlisle

AUSTRALIA

MELBOURNE
+61 (0)3 9820 4311
Patricia Kontos
SYDNEY
+61 (0)2 9326 1422
Ronan Sulich

AUSTRIA

VIENNA
+43 (0)1 533 8812
Angela Bailou

BELGIUM

BRUSSELS
+32 (0)2 512 88 30
Roland de Lathuy

BERMUDA

BERMUDA
+1 401 849 9222
Betsy Ray

BRAZIL

RIO DE JANEIRO
+5521 2225 6553
Candida Sodre
SÃO PAULO
+5511 3081 0435
Christina Haegler

CANADA

TORONTO
+1 416 960 2063
Suzanne Davis

CHILE

SANTIAGO
+562 263 1642
Denise Ratinoff de Lira

FINLAND AND THE BALTIC STATES

HELSINKI
+358 (0)9 608 212
Barbro Schauman
(Consultant)

FRANCE

• PARIS
+33 (0)1 40 76 85 85

GERMANY

BERLIN
+49 (0)30 88 56 95 30
Viktoria von Specht
DÜSSELDORF
+49 (0)21 14 91 59 30
Andreas Rumbler
FRANKFURT
+49 (0)61 74 20 94 85
Anja Schaller
HAMBURG
+49 (0)40 27 94 073
Christiane Gräfin zu
Rantzau
MUNICH
+49 (0)89 24 20 96 80
Marie Christine Gräfin
Huy
STUTT GART
+49 (0)71 12 26 96 99
Eva Susanne Schweizer

INDIA

MUMBAI
+91 22 2280 7905
Menaka Kumari-Shah

INDONESIA

JAKARTA
+6221 7278 6268
Amalia Wirjono

ISRAEL

TEL AVIV
+972 (0)3 695 0695
Roni Gilat-Baharaff

ITALY

• MILAN
+39 02 303 2831
ROME
+39 06 686 3333

JAPAN

TOKYO
+81 (0)3 3571 0668
Kanae Ishibashi

MALAYSIA

KUALA LUMPUR
+60 3 2070 8837
Lim Meng Hong

MEXICO

MEXICO CITY
+52 55 5281 5503
Gabriela Lobo

MONACO

+377 97 97 11 00
Nancy Dotta
(Consultant)

THE NETHERLANDS

• AMSTERDAM
+31 (0)20 57 55 255

PEOPLES REPUBLIC OF CHINA

BEIJING
+86 (0)10 6500 6517
Jane Shan
• HONG KONG
+852 2521 5396
SHANGHAI
+86 (0)21 6279 8773
Harriet Yu

RUSSIA

MOSCOW
+7 495 937 6364
+44 20 7389 2318

SINGAPORE

SINGAPORE
+65 6235 3828
Wen Li Tang

SOUTH KOREA

SEOUL
+82 2 720 5266
Hye-Kyung Bae

SPAIN

BARCELONA
+34 (0)93 487 8259
Cuca Escoda
MADRID
+34 (0)91 532 6626
Juan Varez
Dalia Padilla

• DENOTES SALEROOM ENQUIRIES— Call the Saleroom or Office
For a complete salerooms & offices listing go to christies.com

EMAIL— info@christies.com

26/02/09

SWITZERLAND

- GENEVA
+41 (0)22 319 1766
Eveline de Proyart
- ZURICH
+41 (0)44 268 1010
Dr. Dirk Boll

TAIWAN

- TAIPEI
+886 2 2736 3356
Ada Ong

THAILAND

- BANGKOK
+66 2 652 1097
Yaovane Nirandara

TURKEY

- ISTANBUL
+90 (0)532 582 4895
Zeynep Kayhan
(Consultant)

UNITED ARAB

EMIRATES

- DUBAI
+971 (0)4 425 5647
Chaden Khoury

UNITED KINGDOM

- LONDON
+44 (0)20 7839 9060
LONDON,
• SOUTH KENSINGTON
+44 (0)20 7930 6074
SOUTH
+44 (0)845 900 1766
Mark Wrey
- NORTH
+44 (0)845 900 1766
Thomas Scott
- EAST
+44 (0)845 900 1766
Simon Reynolds
- NORTHWEST AND
WALES
+44 (0)845 900 1766
Mark Newstead
- Jane Blood

SCOTLAND

- +44 (0)131 225 4756
Bernard Williams
Robert Lagneau
Grant MacDougall
David Bowes-Lyon
(Consultant)
- ISLE OF MAN
+44 1624 814502
The Marchioness
Conyngham
(Consultant)
- CHANNEL ISLANDS
+44 (0)1534 485 988
Melissa Bonn

IRELAND

- +353 (0)59 86 24996
Christine Ryall

UNITED STATES

- BOSTON
+1 617 536 6000
Elizabeth M. Chapin
- CHICAGO
+1 312 787 2765
Steven J. Zick
- DALLAS
+1 214 599 0735
Capera Ryan
- HOUSTON
+1 713 802 0191
Lisa Cavanaugh
- LOS ANGELES
+1 310 385 2600
- MIAMI
+1 305 445 1487
Vivian Pfeiffer
- NEWPORT
+1 401 849 9222
Betsy D. Ray
- NEW YORK
+1 212 636 2000
- PALM BEACH
+1 561 833 6952
Meg Bowen
- PHILADELPHIA
+1 610 520 1590
Alexis McCarthy
- SAN FRANCISCO
+1 415 982 0982
Martine Krumholz

THE WALL AND THE SCRIPT, PARVIZ TANAVOLI (Iranian, b. 1937)
bronze, 110cm, high x 72cm, wide x 35cm, deep
Executed in 2007, this work is number four from an edition of five
US\$120,000-180,000



Wednesday 29 April 2009 at 7.00 pm
INTERNATIONAL MODERN AND CONTEMPORARY ART,
FEATURING ARAB, IRANIAN, TURKISH AND WESTERN ART
JUMEIRAH EMIRATES TOWERS HOTEL, DUBAI

ENQUIRIES
William Lawrie
wlawrie@christies.com
+971 4 425 5647

christies.com

CHRISTIE'S

AN IMPORTANT RECTANGULAR-CUT
DIAMOND WEIGHING 20.46 CARATS,
D COLOUR, VS1 CLARITY

SFr. 1,200,000-1,800,000

\$1,000,000-1,500,000

€800,000-1,200,000

Auction
13 May 2009

Viewing
9-13 May 2009

Enquiries
Eric Valdieu
+41 (0)22 319 1730

Catalogues
New York
+1 800 395 6300
London
+44 (0)20 7389 2820

Geneva
8 Place de la Taconnerie
1204 Geneva

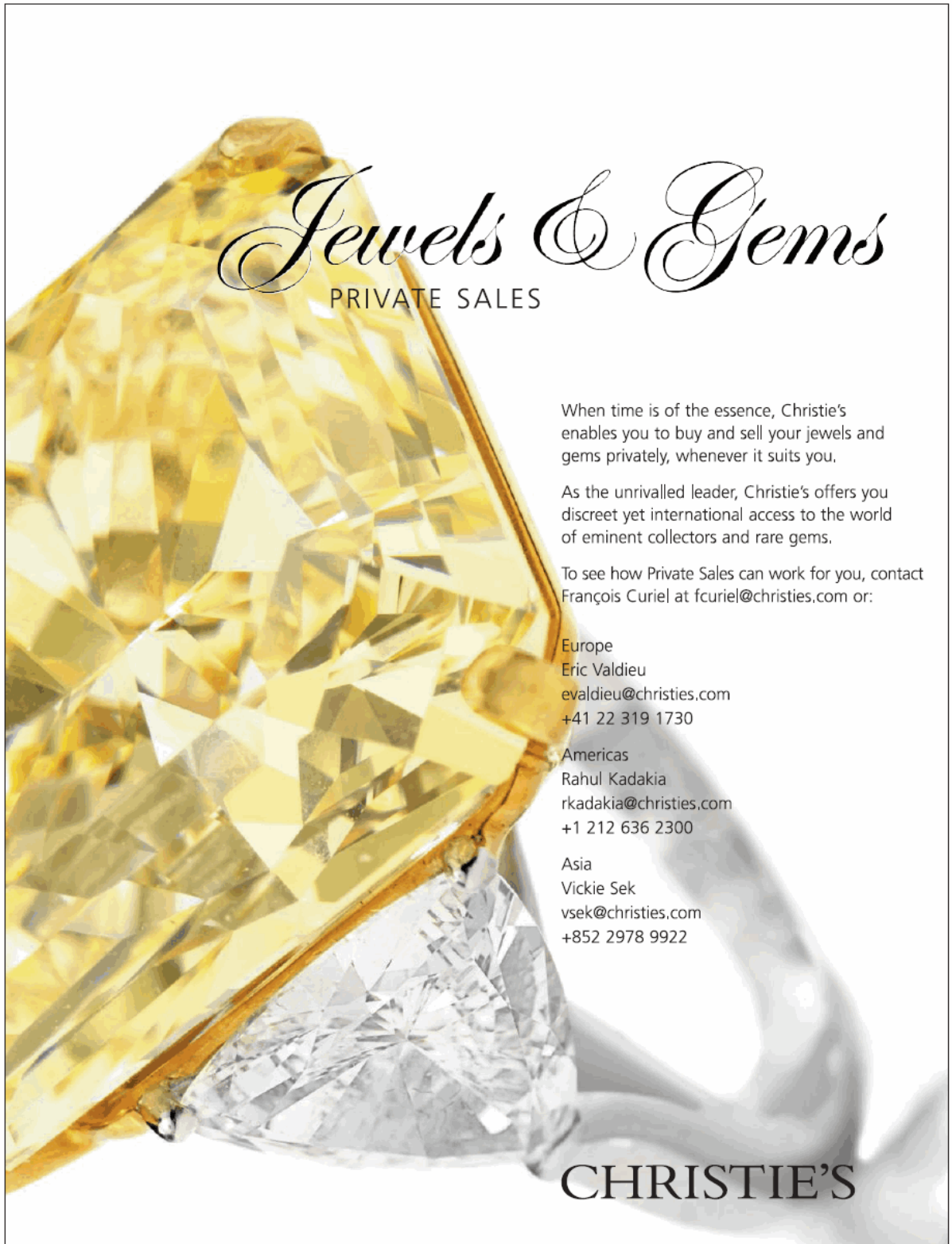
View catalogues and
leave bids online at
christies.com



JEWELS: THE GENEVA SALE

Geneva, 13 May 2009

CHRISTIE'S
SINCE 1766



Jewels & Gems

PRIVATE SALES

When time is of the essence, Christie's enables you to buy and sell your jewels and gems privately, whenever it suits you.

As the unrivalled leader, Christie's offers you discreet yet international access to the world of eminent collectors and rare gems.

To see how Private Sales can work for you, contact François Curiel at fcuriel@christies.com or:

Europe
Eric Valdieu
evaldieu@christies.com
+41 22 319 1730

Americas
Rahul Kadakia
rkadakia@christies.com
+1 212 636 2300

Asia
Vickie Sek
vsek@christies.com
+852 2978 9922

CHRISTIE'S

**VACHERON CONSTANTIN, MALTE
PERPETUAL CALENDAR MINUTE
REPEATER, REF. 30040**

Pink gold manually-wound perpetual calendar minute repeating wristwatch with leap years and moon phase display

Manufactured in 2008

HK\$1,100,000 – 1,600,000
(US\$ 140,000 – 200,000)

Auction
27 May 2009

Viewing
22 - 26 May 2009

Enquiries
Tim Bourne
+852 2978 9920
watcheshk@christies.com

Venue
Hong Kong Convention
and Exhibition Centre,
No.1 Harbour Road,
Wanchai, Hong Kong

Catalogues
London
+44 (0)20 7389 2820
New York
+1 800 395 6300

Hong Kong
22nd Floor
Alexandra House
18 Chater Road Central,
Hong Kong
+852 2521 5396

View catalogues and leave
bids online at christies.com



IMPORTANT WATCHES

Hong Kong, 27 May 2009

CHRISTIE'S
SINCE 1766

JEWELS AND WATCHES

Catalogue Subscriptions Order Form

Code	Subscription Title	Location	Issues	UKPrice	USPrice	EURPrice
Jewellery						
<input type="checkbox"/> K316	Vintage Jewels at South Kensington (included in K16)	South Kensington	2	17	29	27
<input type="checkbox"/> A16	Amsterdam Jewels (includes Watches)	Amsterdam	3	40	66	60
<input type="checkbox"/> D16	Jewels and Watches: The Dubai Sales	Dubai	2	70	114	106
<input type="checkbox"/> N16	Magnificent Jewels: The New York Sales	New York	4	141	228	213
<input type="checkbox"/> L16	Magnificent Jewels: The London Sales	King Street	2	57	95	87
<input type="checkbox"/> P16	Paris Jewels	Paris	2	38	61	57
<input type="checkbox"/> K16	Jewels at South Kensington (includes K316)	South Kensington	11	94	157	146
<input type="checkbox"/> M16	Milan Jewels (includes Watches)	Milan	2	27	44	40
<input type="checkbox"/> G16	Magnificent Jewels: The Geneva Sales	Geneva	2	70	114	106
<input type="checkbox"/> H16	Magnificent Jewels: The Hong Kong Sales (includes Jadeite)	Hong Kong	2	70	114	106
Watches and Wristwatches						
<input type="checkbox"/> A16	Jewels (includes Watches)	Amsterdam	3	40	66	60
<input type="checkbox"/> D16	Jewels and Watches: The Dubai Sales	Dubai	2	70	114	106
<input type="checkbox"/> H44	Important Watches	Hong Kong	2	65	105	99
<input type="checkbox"/> N44	Important Pocket Watches and Wristwatches	New York	2	65	105	99
<input type="checkbox"/> G44	Important Pocket Watches and Wristwatches	Geneva	2	65	105	99
<input type="checkbox"/> M16	Milan Jewels (includes Watches)	Milan	2	27	44	40

Catalogue Subscriptions Order Form

Billing Address/Send catalogues to:

Name _____

Address _____

Daytime Telephone _____ Facsimile _____ e-mail _____

Please tick if you prefer not to receive information about our upcoming sales by e-mail

Christie's Client Number _____

Method of payment: Visa MasterCard American Express

Card Number _____ Expiry Date _____

Card Member Signature _____

Cheque endorsed US\$ UK£ EUR Please make cheque payable to **Christie's**
Residents of the US states of CA, CT, DC, FL, IL, MA, NJ, NY, PA, RI, and TX please add local sales tax.
Residents of Belgium, France, Germany, Italy, the Netherlands, and Spain please add local VAT. Tax Exempt
clients must include a copy of their Tax Exempt Certificate.
Orders shipped to North or South America will be charged in US dollars. Orders shipped to the European
Union (except the UK) will be charged in euros. All other orders will be charged in UK pounds sterling.

Receive beautifully illustrated catalogues from our auctions around the world. Your private view of some of the world's most beautiful objects and an indispensable guide to forth-coming auctions will be mailed to you as soon as available. To place an order: please indicate your choice above and complete your details on the left and fax or mail this form. Alternatively, view catalogues free online at christies.com.

Reply to:
Christie's Catalogues, 8 King Street, St James's
London SW1Y 6QT, United Kingdom
Tel: +44 (0)20 7389 2820 Fax: +44 (0)20 7389 2869
subscribe-uk@christies.com

Christie's Catalogues, 20 Rockefeller Plaza
New York, NY 10020, USA
Tel: +1 800 395 6300 Fax: +1 800 395 5600
From outside US
Tel: +1 212 636 2500 Fax: +1 212 636 4940
subscribe-us@christies.com

CHRISTIE'S

CHRISTIE'S

THE BOARD OF CHRISTIE'S

Patricia Barbizet, Chairman,
Edward Dolman, Chief Executive Officer;
Charles Cator, Deputy Chairman,
François Curiel, Deputy Chairman,
Nick Deeming, Pedro Girao, Brett Gorvy,
Nicholas Hall, Lisa King, Stephen Lash,
Viscount Linley, Marc Porter,
Jussi Pylkkänen, Theow-Huang Tow

CHRISTIE'S UK

CHAIRMAN'S OFFICE

Viscount Linley, Chairman;
Noël Annesley, Honorary Chairman;
Richard Roundell, Vice Chairman;

Robert Copley, Deputy Chairman;
The Earl of Halifax, Deputy Chairman;
Jonathan Horwich, Deputy Chairman;
Francis Russell, Deputy Chairman;
Edward Clive
Amin Jaffar
Roy Miller
Orlando Rock

Jane Hay, UK Managing Director;
Lisa King, International Managing Director;
Gerard Barrett, International Commercial Director

DIRECTORS

Anke Adler-Slotke, James Alabaster,
Philip Anders, Simon Andrews,
Richard Bagnall-Smith, Upasana Bajaj,
Martin Beisly, Philip Belcher, Tara Bell,
Dominic Bennett, Jeremy Bendley,
Ellen Berkeley, Giovanna Bertazzoni,
Rufus Bird, Jane Blood, David Bowes-Lyon,
Peter Brown, Robert Brown,
James Bruce-Gardyne, Olivier Camu,
Benjamin Clark, Karen Cole,
Jamie Collingridge, Ingrid Cowan,
Migi Coyle, John Croom, Sebastian Davies,
Isabelle de La Bruyere, Willem de Gier,
Julia Delves Broughton, Adrian Denton,
Harriet Drummond, Adam Duncan,
Hugh Edmeades, (Chairman, Christie's South Kensington), David Elswood,
Jean Paul Engelen,
Meredith Etherington-Smith, Nick Finch,
Peter Flory, Elizabeth Floyd, Margaret Ford,
Patricia Frost, Philippe Garner, Simon Green,
David Gregory, Peter Gwynn, Philip Harley,
Paul Hewitt, Rachel Hilderley, Mark Hinton,
Gillian Holden, Sarah Hornsby, Tim Hunter,
Michael Jeha, Susan Johnson,
Donald Johnston, Richard Knight,
Robert Lagneau, Nicholas Lambourn,
Elizabeth Lane, Laura Lindsay,
David Llewellyn, Richard Lloyd,
William Lorimer, Grant MacDougall,
Catherine Manson, Hugo Marsh,
John McDonald, Nic McElhatton,
Bernadette McKernan, Alexandra McMorro,
Andrew McVinish, Franca Mercati,
Yamini Mehta, Roy Miller, Edward Monagle,
Chris Munro, Rupert Neelands,
Mark Newstead, Liberte Nuti,
Nicholas Orchard, Pilar Ordovas,
Andreas Pampoulides, Keith Penton,
Henry Pettifer, Anthony Phillips,
William Porter, Marcus Räddecke, Paul Reason,
Amjad Rauf, William Robinson,
Christine Ryall, Raymond Sanicroff-Baker,
Tom Scott, Thomas Seydoux,
Dominic Simpson, John Souglides,
John Stainton, Matthew Stephenson,
Jonathan Stone, Kay Sutton,
Anastasia Tennant, Alexis de Tiesenhausen,
Nicolette Tomkinson, Brenda Van Camp,
Thomas Venning, Jay Vincze, David Warren,
Andrew Waters, Nick White,
Mark Wilkinson, Bernard Williams,
Harry Williams-Bulkeley, Martin Wilson,
Victoria Wolcough, Rodney Woolley,
Toby Woolley, Tom Woolston, Mark Wrey

ASSOCIATE DIRECTORS

Richard Addington, Deborah Allan,
Dina Amin, Claire Bailey-Coombs,
Johanna Baring, Sven Becker,
Piers Boothman, Mark Bowis,
Louise Broadhurst, Jo Brooks, Lucy Brown,
Anne Bury, Michael Cowley, Daniel Gallen,
Pat Galligan, Sebastian Goetz, Lara Grieve,
Coral Hall, Peter Horwood, Rosie Jarvie,
Alexandra Kindermann, Teresa Krasny,
Mark Henry Lampé, Jeffrey Lassaline,
William Lawrie, Brandon Lindberg, Joy
McCall, Murray Macaulay, Sarah Mansfield,
Nicolas Martineau, Jeremy Morgan,
Sandra Nedvetskaia, Caroline Porter,
Michael Prevezer, Simon Reynolds,
Sumiko Roberts, Tim Schmelcher,
Rosemary Scott, Birgid Seynsche-Vautz,
Nigel Shorthouse, Laura Tayler,
Daniel Tolson, Bart van Son, Tony Walshe,
Adrienne Waterfield, Gower Williams,
Annette Wilson, Yuka Yamaji, Geoff Young

EUROPEAN DIRECTORS

Jussi Pylkkänen, President
Angela Baillou, Dr. Dirk Boll,
Roni Gilat-Baharaff, Clarice Pecori Giraldi,
Christiane Gräfin zu Rantzau,
Roland de Lathuy, Eveline de Proyart,
Francois de Ricqles, Andreas Rumbler,
Jop Ubbens, Juan Varez

CHRISTIE'S EUROPEAN ADVISORY BOARD

Pedro Girao, Chairman,
Christopher Balfour, Patricia Barbizet,
Geneva Elkann, I. D. Fürstin zu Fürstenberg,
S.D. Dr Johann Georg Prinz von Hoherzollern,
H.R.H. Prince Pavlos of Greece,
Alicia Kopolowitz, Robert Manoukian,
Her Grace The Duchess of Marlborough,
Usha Mittal, Leopoldo Rodés, Çiğdem Simavi

The Paper used in this catalogue has been manufactured at a mill which has been awarded the ISO 14001 for Environment Management and is a registered mill with EMAS (the EU Eco-Management and Audit Scheme)



09/03/09

Catalogue photo credits: Alberto Gonzalez Carcavilla
Printed in England
© Christie, Manson & Woods Ltd. (2007)









CHRISTIE'S

LEVEL 4, PRECINCT BUILDING 5, OFFICE 406, DUBAI INTERNATIONAL FINANCIAL CENTRE, PO BOX 506685, DUBAI, UNITED ARAB EMIRATES
+971 (0)4 425 5647 TELEPHONE +971 (0)4 425 5639 FACSIMILE