

AMSTERDAM

JEWELS & WATCHES

Wednesday 29 April 2009



CHRISTIE'S

INTERNATIONAL JEWELLERY DEPARTMENT & AUCTION CALENDAR

INTERNATIONAL DIRECTOR

François Curiel
Tel: +41 (0)22 319 1700

INTERNATIONAL BUSINESS DIRECTOR

Myriam Christinaz
Tel: +41 (0)22 319 1732

BUSINESS DEVELOPMENT DIRECTOR

Natacha Vassiltchikov
Tel: +41 (0)22 319 1725

SENIOR EUROPEAN DIRECTOR

Raymond Sanicroff-Baker
Tel: +44 (0)20 7389 2388

CLIENT DEVELOPMENT

Sarah O'Brien
(International Client Development Director)
Tel: +44 (0)20 7389 2494

BUSINESS MANAGERS

AMERICAS

Sarah Cashin
Tel: +1 212 636 2300

ASIA

Ida Lee
Tel: +852 2978 9985

LONDON & DUBAI

Armelle de Laubier-Rhally
Tel: +44 (0)20 7389 2447

WORLDWIDE

AMSTERDAM

Jessica Koers
Daniel Girod
Tel: +31 (0)20 575 5915

BANGKOK

Yaovanee Nirandara (Liaison)
Tel: +66 2 652 1097

BARCELONA

Cuca Escoda (Liaison)
Tel: +34 (0)93 487 82 59

BERLIN

Frederik Schwarz
Tel: +49 (0) 175 524 4379

BOSTON

Susan Florence
Tel: +1 617 536 6000

CHICAGO

Tel: +1 312 787 2765

DUBAI

David Warren
(Senior International Specialist)
Tel: +44 (0)20 7389 2383

GENEVA

Eric Valdieu
Jean-Marc Lunel
Helen Molesworth
Tel: +41 (0)22 319 1730

HONG KONG

Vickie Sek (Jewellery and Jadeite)
Karen Au Yeung
Tel: +852 2521 5396

JAKARTA

Tel: +62 (0)21 527 2606

KUALA LUMPUR

Lim Meng Hong (Liaison)
Tel: +60 3 2070 8837

LONDON

KING STREET

Keith Penton
Tel: +44 (0)20 7389 2526
Emma Checkley
Tel: +44 (0)20 7389 2483

David Warren

(Senior International Specialist)
Tel: +44 (0)20 7389 2383

SOUTH KENSINGTON

Geoff Young
Tel: +44 (0)20 7752 3267

LOS ANGELES

Debbie Bloom
Elizabeth Irvine
Tel: +1 310 385 2666

MADRID

Maria Sempere
Tel: +34 (0) 91 532 6627

MILAN

Teresa Scarlata
Tel: +39 02 30 32 83 70

NEW YORK

Rahul Kadakia
Daphne Lingon
Leslie Roskind
Maria Los, Sales Representative
Tel: +1 212 636 2300

PARIS

Marie-Laurence Tixier
Tel: +33 (0)1 40 76 85 81

ROME

Francesco Alverà
Tiziana Appetiti
Tel: +39 06 686 3340

SHANGHAI

Brenda Kang
Tel: +86 21 6279 8773

SINGAPORE

Wen Li Tang
Tel: +65 6235 3828

SYDNEY

Ronan Sulich
Tel: +61 (0) 2 9326 1422

TAIPEI

Ada Ong (Liaison)
Tel: +886 2 2736 3356

TOKYO

Kaori Yoshida (Liaison)
Tel: +81 (0)3 3571 0668

ZURICH

Marianne Trümpler (Liaison)
Tel: +41 (0)44 268 1016

06/03/09

AUCTION CALENDAR

To include your property in these sales please consign ten weeks before the sale date. Contact the specialists or representative office for further information.

7 APRIL
JEWELS AT SOUTH
KENSINGTON
LONDON

22 APRIL
THE NEW YORK SALE

28 APRIL
THE DUBAI SALE

29 APRIL
AMSTERDAM JEWELS

12 MAY
JEWELS AT SOUTH
KENSINGTON
LONDON

13 MAY
THE GENEVA SALE

26 MAY
THE HONG KONG SALE

27 MAY
MILAN JEWELS

10 JUNE
THE LONDON SALE

11 JUNE
THE NEW YORK SALE

17 JUNE
JEWELS AT SOUTH
KENSINGTON
LONDON

14 JULY
JEWELS AT SOUTH
KENSINGTON
LONDON

8 SEPTEMBER
JEWELS AT SOUTH
KENSINGTON
LONDON

6 OCTOBER
PARIS JEWELS

21 OCTOBER
THE NEW YORK SALE

27 OCTOBER
THE DUBAI SALE

27 OCTOBER
JEWELS AT SOUTH
KENSINGTON
LONDON

3 NOVEMBER
AMSTERDAM JEWELS

17 NOVEMBER
JEWELS AT SOUTH
KENSINGTON
LONDON

18 NOVEMBER
THE GENEVA SALE

25 NOVEMBER
MILAN JEWELS

1 DECEMBER
THE HONG KONG SALE

9 DECEMBER
THE LONDON SALE

10 DECEMBER
THE NEW YORK SALE

15 DECEMBER
JEWELS AT SOUTH
KENSINGTON
LONDON

Subject to change.

02/03/09

JEWELS & WATCHES

Wednesday 29 April 2009

SELECTED VIEWING

A selection of the lots on offer will be on view at:

Christie's London

8 King Street, St. James's, London
Thursday 16 April from 10.00 am - 5.00 pm
Friday 17 April 10.00 am - 4.00 pm
(By appointment only with Cecile Brüggen on +31(0)20 575 52 18)

AUCTION

Wednesday 29 April 2009
at 10.30 am Lots 1-105
and at 2.00 pm Lots 106-267
Cornelis Schuytstraat 57,
1071 JG Amsterdam
under the aegis of
Lubbers & Dijk, Notaries

AUCTION CODE AND NUMBER

In sending absentee bids or making enquiries, this sale should be referred to as **AMS-2816**

VIEWING IN AMSTERDAM

Saturday	25 April	10.00 am - 5.00 pm
Sunday	26 April	10.00 am - 5.00 pm
Monday	27 April	10.00 am - 5.00 pm
Tuesday	28 April	10.00 am - 4.00 pm

AUCTIONEERS

Anna-Paulina Cramer and Leila de Vos van Steenwijk

SPECIALISTS

Jessica Koers
Daniel Girod
Tel: +31 (0)20 575 59 15
Fax: +31 (0)20 575 59 54

ADMINISTRATOR

Cecile Brüggen
Tel: +31 (0)20 575 52 18
Fax: +31 (0)20 575 59 54

EMAIL

First initial followed by last name
@christies.com
(eg. Jessica Koers=
jkoers@christies.com)

For general enquiries about this auction, email should be addressed to the auction administrator

Front cover: Lot 256
Back cover: Lot 4

SERVICES

ABSENTEE BIDS

Tel: +31 (0)20 575 52 57/8
Fax: +31 (0)20 575 59 56

TELEPHONE BIDS

Tel: +31 (0)20 575 59 50
Fax: +31 (0)20 575 59 74

AUCTION RESULTS

+44 (0)20 7627 2707

PAYMENT

Tel: +31 (0)20 575 52 11
Fax: +31 (0)20 575 59 24

SHIPPING

Tel: +31 (0)20 575 52 52
Fax: +31 (0)20 575 52 44

CLIENT SERVICE CENTRE

Tel: +31 (0)20 575 52 55
Fax: +31 (0)20 664 08 99

CONDITIONS OF SALE

This auction is subject to Important Notices, Conditions of Sale and to Reserves

BUYING AT CHRISTIE'S

For an overview of the process, see the Buying at Christie's section.
[21]

christies.com

This auction features
CHRISTIE'S LIVE™
Bid live in Christie's salerooms worldwide
register at www.christies.com

CHRISTIE'S

View catalogues and leave bids online
at christies.com

MORNING SESSION 10.30 AM

1
AN ANTIQUE SAPPHIRE, ENAMEL AND DIAMOND BROOCH
 Designed as a central cabochon star sapphire within four black and white enamelled ribbons highlighted with small diamonds, *circa 1870, repairs*
 €1,400-1,600 US\$1,800-2,000



1

2
AN ANTIQUE CAMEO DEMI PARURE
 The necklace composed of eight variously cut agate cameo's connected by black and white enamelled openwork foliate links; and a pair of earrings and a matching pendant, *mid 19th Century*
 €3,000-5,000 US\$3,800-6,300

3
TWO ANTIQUE ENAMEL AND GEM SET RINGS
 One in neo-renaissance style set with a mabé pearl surrounded by rose-cut diamonds and rubies to a carved shank; and a polychrome enamelled ring with diamond set flower centre, *both mid 19th Century*
 €1,200-1,800 US\$1,600-2,300

4
A RARE ENAMEL AND GEM SET VERGE WATCH
 Designed as a polychrome enamelled figurine representing the Roman priestess Rhea Silvia keeping an eye on young Romulus and Remus, to a bell shaped base with table-cut diamond set borders and polychrome enamelled acanthus decoration, underneath revealing an enamel and gilt dial, centred by polychrome enamel floral pattern, black Roman numerals on gilt cartouches, gilt hour hand
 Unsigned, movement bearing the signature of Breguet, No. 12, *circa 1820*
 €6,500-8,500 US\$8,300-11,000

5
AN ANTIQUE ENAMEL AND DIAMOND RING
 In neo-renaissance style, set with a table-cut diamond to the partly blue and black enamelled raised bevel, white enamelled scroll decorated shoulders, *mid 19th Century*
 €2,500-3,500 US\$3,200-4,400

6
A PAIR OF ANTIQUE MICRO-MOSAIC EARRINGS
 Each of vase shape, set with a polychrome micro-mosaic decor of flowers and a central bird perched on a twig, supporting three similarly-set drops to a circular surmount, *circa 1870*
 €3,000-5,000 US\$3,800-6,300

7
AN ANTIQUE PEARL AND GEM SET TIE PIN
 Designed as a chinese smoking man with pearl belly and nodding head to a ruby and emerald set base, *19th Century, one stone deficient*
 €1,000-1,500 US\$1,300-1,900

8
AN ANTIQUE ENAMEL NECKLACE
 Composed of black and white enamelled quatrefoil and foliate links, *late 19th Century, 120.0 cm long*
 €2,500-3,500 US\$3,200-4,400



2



4



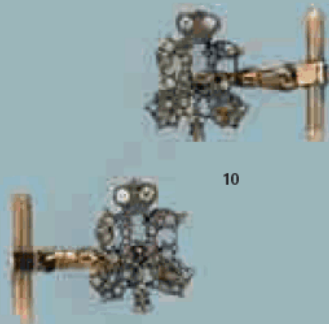


9



Grand Duke Alexander Mikhailovich with his wife Grand Duchess Xenia Aleksandrovna and Grand Duchess Olga Aleksandrovna, sisters of Tsar Nicholas II. Grand Duke Andrei Aleksandrovich (1897-1981) is seated second from the left, Photo Courtesy of Jacques Ferrand

9
AN ANTIQUE RUSSIAN ENAMEL AND DIAMOND HEART PENDANT
 The heart-shaped locket with pink *guilloché* enamel centering a circular-cut diamond, suspended from a similarly-set foliate gold surmount, opening to reveal two glazed compartments, *Russian marks, circa 1900, case* (2)
 €3,500-4,500 US\$4,500-5,700



10

10
A PAIR OF DIAMOND SET CUFF LINKS
 Each designed as a crowned monogram set with cushion-shaped and rose-cut diamonds to a ribbed cylindrical baton with square-cut ruby and diamond details, *Russian marks* (2)
 €1,400-1,800 US\$1,800-2,300



11

11
A ROSE QUARTZ AND DIAMOND BOX
 The oval rose quartz box with gold trimmings, the lid applied with a diamond set crown surmounting a gold wreath, cabochon sapphire set button
 €1,500-2,500 US\$1,900-3,200



12

12
A GOLD BRACELET, PROBABLY FABERGÉ
 The gold bracelet designed as entwined links, *21.0 cm long*
 Workmaster's mark of August Holmstrom, St. Petersburg, 1896-1908
 Provenance: Grand Duchess Xenia Alexandrovna (1975-1960) Grand Duke Andrei Alexandrovich (1897-1981) Then by direct descent.
 Previously sold at Christie's NY, 20 April 2001
 €800-1,200 US\$1,100-1,500



Empress Alexandra Feodorovna

13

A RUSSIAN GOLD MEDAL

The circular medal with red enamelled cross to a diamond set crown summount

€1,000-1,500

US\$1,300-1,900



13

14

A RUSSIAN ENAMEL AND DIAMOND PENDANT

The gold bar centring a red enamel button with rose-cut diamond Russian Imperial Eagle appliqué within a ribbed gold frame. Inscribed: Formerly The Property of The Late Czarina of Russia. *circa 1890*. Together with an original postcard depicting Empress Alexandra Feodorovna. (3)

Provenance: Watski, London.

€3,000-5,000

US\$3,800-6,300



14

15

A PAIR OF ENAMEL AND DIAMOND CUFF LINKS

Each circular panel with red *guilloché* fond applied with a white enamelled imperial eagle centering a rose-cut diamond within a border of diamonds, *modern Russian marks* (2)

€1,000-1,500

US\$1,300-1,900



15



16

AN ANTIQUE GOLD FOB SEAL BRACELET

The bracelet of curb chain linking supporting ten fob seals and two egg pendants, *20.0 cm long*

€3,000-5,000

US\$3,800-6,300



16

5



17

17
AN AQUAMARINE TORSADE NECKLACE, BY KHAZAMA
 Composed of multiple strands of light coloured and faceted aquamarine beads, fastening through a loop on one end, terminating in octahedral gold beads, *adjustable length*
 Signed Khazama
 €1,000-1,500 US\$1,300-1,900

18
AN ANTIQUE OPAL BEAD NECKLACE
 Strung with graduated opal beads divided by faceted quartz spacers to a ruby and rose-cut diamond set cluster clasp, *51.0 on long, circa 1900*
 €1,800-3,000 US\$2,300-3,800

19
AN ART DECO ENAMEL AND DIAMOND VANITY CASE
 The rectangular box with marbled green and yellow enamel applied with a diamond set monogram, opening to reveal a mirror and two compartments to a partly enamelled chain; and a matching lipstick holder, *circa 1925*
 €1,800-2,200 US\$2,300-2,800

20
AN ANTIQUE ART NOUVEAU ENAMEL PENDANT
 Composed of graduated maple keys with green *plique-a-jour* enamelled leaves and freshwater pearl set buds to the silver frame, *circa 1900*
 €4,000-6,000 US\$5,100-7,600

21
A SET OF ENAMELLED HAIRCOMBS, BY MUSASHIYA
 The three graduated tortoise combs each set with a gold mount with a fine polychrome enamelled dragon, the largest clenching the sacred pearl, *circa 1900, original fitted case by Musashiya jewellers, Yokohama* (4)
 €3,500-5,500 US\$4,500-6,900

22
AN ANTIQUE 18TH CENTURY CHRYSOBERYL FLOWER BROOCH
 The brooch of openwork form, the central entwined stems with flowerhead cluster details set throughout with cushion-cut chrysoberyls, *circa 1770*
 €1,500-2,500 US\$1,900-3,200

23
AN ART NOUVEAU GLASS "DEUX AIGLES" BROOCH, BY RENÉ LALIQUE
 Designed as a pressed greyish green iridescent glass plaque depicting two eagles centring a garland, mounted in an ornate gilt frame, *9.5 on long*
 Signed Lalique
 This model was introduced in 1911. Literature: Exhibition catalogue, Ren Lalique, 1996, p. 130, fig. 221; exhibition catalogue, Ren Lalique, 2001, p. 128, fig. 193; exhibition catalogue, Ren Lalique, 2005, p. 83, fig. 106.
 Exhibited: Navio 1996; Cifu 2001; Hamamatsu 2001.
 €1,000-2,000 US\$1,300-2,500

24
AN ANTIQUE MOON TIE PIN AND ROSE-CUT DIAMOND BROOCH
 The stickpin centering a circular moonstone carved as the face of the man in the moon surrounded by four old-cut diamonds, *19th century, fitted case stamped Wolfers Frères Bruxelles*; and a rose-cut diamond flower brooch, *19th Century* (2)
 €1,500-2,500 US\$1,900-3,200



21

6



25

AN OPAL AND DIAMOND BROOCH

Composed as a flower set with navette shaped opals and enhanced with diamonds, *circa 1970*
 €800-1,400

US\$1,100-1,800



25

26

AN ANTIQUE TURQUOISE AND DIAMOND NECKLACE AND BROOCH

The necklace composed of graduated cabochon turquoise flanked by pairs of cushion-shaped diamonds to a similarly-set cluster clasp, *39.0 cm long*; and an antique star brooch set with cabochon turquoise and halfpearls, *both circa 1870*
 €1,000-1,500

US\$1,300-1,900

27

A TURQUOISE AND DIAMOND DRAGONFLY BROOCH

The thorax and abdomen set with graduated cabochon turquoises, the wings set with numerous rose-cut diamonds and black enamelled veins, the reverse finely engraved
 €1,000-1,500

US\$1,300-1,900

28

TWO NATURAL PEARL NECKLACES

One necklace strung with graduated pearls measuring from approximately 5.2 to 3.9 mm in diameter to a calibrated emerald and diamond cluster clasp, *47.0 cm long*; the other strung with uniform pearls measuring approximately 3.5 mm in diameter on a diamond and pearl set clasp, *38.5 cm long, both circa 1920*
 €2,000-3,000

US\$2,600-3,800

29

A PAIR OF TURQUOISE AND DIAMOND EARRINGS

Each designed as a shell-shaped turquoise drop to a sapphire and diamond set mount, connected by turquoise links to the diamond set amoeba surmount
 €2,000-4,000

US\$2,600-5,100

30

A PAIR OF AQUAMARINE AND DIAMOND EARRINGS

Each pear-shaped aquamarine surrounded by brilliant-cut diamonds to a diamond set surmount
 €1,200-3,000

US\$1,600-3,800

31

A COLLECTION OF SEVEN UNMOUNTED DIAMONDS

The brilliant-cut stones weighing respectively 0.78, 0.77, 0.72, 0.52, 0.47, 0.45 and 0.45 carats
 €2,000-3,000

US\$2,600-3,800

32

A ROCK CRYSTAL AND DIAMOND MODEL OF A RABBIT

The seated rabbit with diamond set eyes

€1,800-2,200

US\$2,300-2,800



8

32





33

33

AN ANTIQUE DIAMOND NECKLACE

The front designed as four *guirlandes* with crescent shaped diamond set connections, supporting a drop shaped as a *bouquet des fleurs* to a bar link backchain, *French, circa 1900, 37.0 cm long*

€2,000-3,000

US\$2,600-3,800

34

AN ANTIQUE GOLD AND ENAMEL NECKLACE

Composed of tapered band-shaped links with filigree decoration connected by oval loop links, supporting an oval locket set at the front with a blue enamelled star motif centering halfpearls, *circa 1877, 44.5 cm long*

€1,500-2,500

US\$1,900-3,200

35

AN ANTIQUE GARNET AND ENAMEL PENDANT

Set with an oval garnet within a beaded frame with white and green enamel foliate decoration, a compartment at the reverse, *circa 1870*

€1,000-2,000

US\$1,300-2,500

36

AN ANTIQUE RUBY AND DIAMOND BRACELET

Composed of reeded quatrefoil links applied with flowerheads set with alternatively circular-cut rubies and cushion-shaped diamonds, *French marks, 19th Century*

€3,500-4,500

US\$4,500-5,700

37

A PAIR OF ANTIQUE GEM SET BROOCHES, BY CASTELLANI

Each designed as a cross set with cabochon emeralds and rubies to a circular background with trefoil piercework, enhanced with filigree borders, ormulu finish, *circa 1860, for a similar but larger brooch see Christie's Amsterdam jewellery sale 2803, Lot 26* (2)

With endorsed C's maker's mark for Castellani

€5,000-7,000

US\$6,400-8,800

38

AN ANTIQUE GEM SET GOLD PURSE

The fine mesh gold purse to a clasp set with oval cabochon sapphires interspersed with small rose-cut diamonds, *late 19th century*

€2,000-4,000

US\$2,600-5,100

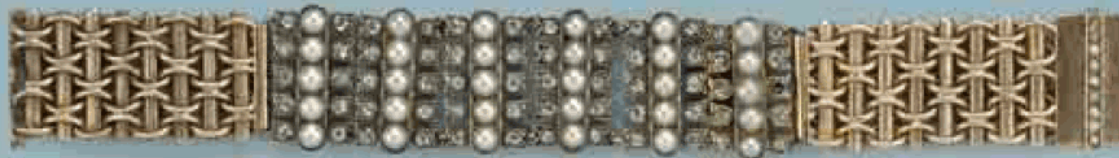
39

AN ANTIQUE DIAMOND BRACELET

The central part composed of six panels with rows of halfpearls flanked by rose-cut diamond set tulip-shaped ornaments, to a woven bamboo shaped bracelet, *19th Century*

€1,500-2,000

US\$1,900-2,500



39

10



Two Royal Italian Jewels

40

A PAIR OF ROYAL ITALIAN CUFF LINKS, BY MASENZ

Each designed as a double oval gold panel with initial E with crown above for Elena, Queen of Italy (1873-1952). French import marks, circa 1900. With original postcard depicting Queen Elena. (3)

Original fitted leather case with crown applique stamped G. Masenz a Roma

Queen Elena of Italy (1873-1952) née Elena del Montenegro married Victor Emmanuel III of Italy in 1896

€1,000-1,500

US\$1,300-1,900

41

A ROYAL ITALIAN PORTRAIT BANGLE

The bangle with central oval miniature portrait of Vittorio Emanuele, wearing orders including the Royal Sardinian Order of the Most Sacred Annunciation, the cover set with lines of old-cut diamonds, cushion-cut emeralds and rubies, shoulders with similarly-set V and E initials surmounted by a crown, circa 1860

Depicted is Vittorio Emanuele, King of Italy (1820-1878). He was the son of Carlo Alberto, 7th Prince of Carignano and King of Sardinia (first Sardinian King from the Savoia-Carignano line). Vittorio Emanuele was King of Sardinia (1849-1861) as Vittorio Emanuele II and became the first King of Italy in 1861. He married firstly his cousin Marie Adelaide of Habsburg-Lorraine in 1842. Among his children were Umberto I, King of Italy. Vittorio Emanuele marriedmorganatically, in 1869, his principal mistress Rosa Vercellana Guerrieri, who had been created Contessa di Mirafiori e Fontanafredda in 1858. Ferdinando Maria Alberto, duca di Genova, married Elisabeth, daughter of King Johann I of Saxony, in 1850. Their daughter Margherita Maria married her cousin King Umberto I of Italy, and their son Tommaso Alberto married Princess Isabella of Bavaria.

€18,000-28,000

US\$23,000-35,000



40



41 (portrait in bangle)



41



****42**

A PAIR OF CORAL AND DIAMOND EARRINGS

Each red coral drop suspended from a line of brilliant-cut diamonds (2)
 €1,500-1,600 US\$1,900-2,000

****43**

AN ANTIQUE CORAL NECKLACE

Composed of five rows of bouton-shaped coral beads measuring approximately 8.0 mm in diameter on a circular clasp decorated with cannetille motifs and coral, 19th Century, Dutch mark for gold, 35.0 cm long
 €1,800-2,800 US\$2,300-3,500

44

A PAIR OF RUBY AND DIAMOND CUFF LINKS

Each designed as a crown set with rubies and diamonds to a cabochon ruby set baton link (2)
 €800-1,200 US\$1,100-1,500

ψ45

FOUR ANTIQUE DIAMOND BROOCHES AND A RING

Comprising: a pearl and diamond set pierced bar brooch, circa 1920; a bar brooch with diamond set cluster; a rose-cut diamond cluster brooch, 19th Century and a foliate brooch set with circular and rose-cut diamonds; and a crossover ring set with an oval ruby and a circular-cut diamond between cross-over shoulders set with rose-cut diamonds, circa 1900 (5)
 €3,000-5,000 US\$3,800-6,300

46

THREE DIAMOND SINGLE STONE RINGS

Each set with a brilliant-cut diamond (3)
 €4,000-6,000 US\$5,100-7,600

47

AN ANTIQUE NATURAL PEARL, RUBY AND DIAMOND BANGLE

The central natural pearl within an old-cut diamond and ruby surround and similarly-set shoulders, circa 1880, French mark for gold and maker's mark
 €1,500-2,500 US\$1,900-3,200



48 (part)

48

A COLLECTION OF JEWELLERY, BY CARTIER

Comprising: a pair of tricolore earrings, No. B49511 with certificate; a pair of white and yellow gold earrings, signed Cartier, No. 117092 and a ropetwist necklace with bangle, signed Cartier No. 116326 (6)
 €3,000-5,000 US\$3,800-6,300

49

A COLLECTION OF GOLD ARTEFACTS

Comprising eight gold replica statues (8)
 €8,400-10,400 US\$11,000-13,000

50

A GEM SET NECKLACE AND BRACELET

Each designed as a curling snake, its head set with circular-cut emeralds and ruby set eyes (2)
 €800-1,200 US\$1,100-1,500



50 (part)

51

A COLLECTION OF GOLD ARTEFACTS

Comprising eight gold replica statues (8)
 €3,000-4,000 US\$3,800-5,100

52

A COLLECTION OF GOLD ARTEFACTS

Comprising six gold replica statues (6)
 €6,400-8,400 US\$8,100-11,000

53

A COLLECTION OF GOLD ARTEFACTS

Comprising seven gold and one metal replica artefacts (8)
 €1,600-2,600 US\$2,100-3,300

54

A COLLECTION OF GOLD ARTEFACTS

Comprising eight gold replica statues (11)
 €5,000-7,000 US\$6,400-8,800

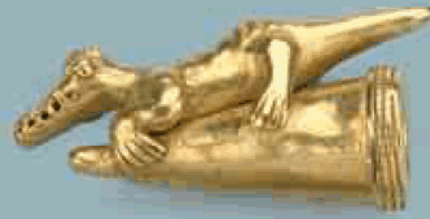
***55**

A COLLECTION OF NEPHRITE ARTEFACTS

Comprising 45 modern replica's of South American tools (45)
 €800-1,200 US\$1,100-1,500



49 (part)



51 (part)



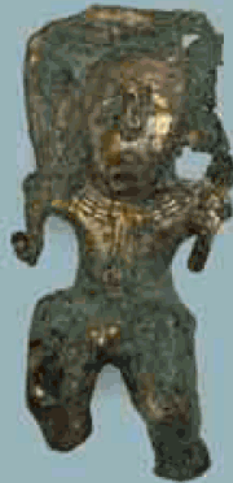
52 (part)



53 (part)



54 (part)



55 (part)



56

56
A FINE ANTIQUE AMETHYST AND DIAMOND BRACELET
 Composed of tulip-shaped links set with oval-cut amethysts surrounded by rose-cut diamonds, supporting a pear-shaped amethyst drop encrusted with spiral lines set with rose-cut diamonds, 19th Century
 €4,000-6,000 US\$5,100-7,600

57
A PAIR OF AMETHYST AND DIAMOND EARRINGS
 Each amethyst briolette drop suspended from a diamond set foliate summit (2)
 €1,800-2,800 US\$2,300-3,500

58
AN AMETHYST, CITRINE AND DIAMOND SAUTOIR
 The longchain set with pear-shaped and oval-cut amethysts and citrines divided by cushion-shaped diamonds, 130.0 cm long
 €4,000-6,000 US\$5,100-7,600

59
AN ANTIQUE SAPPHIRE AND DIAMOND PENDANT
 Set with a large cushion-shaped yellow sapphire within a diamond set foliate frame, supporting a later yellow briolette sapphire, late 19th Century (2)
 Accompanied by a N.E.L. certificate No. E15145 dated 16 december 2008 stating both sapphires to be natural with no indications of heat
 €4,000-6,000 US\$5,100-7,600

60
AN AMETHYST AND TURQUOISE SNAKE RING, BY CARTIER
 Composed of a pair of entwining rings with hammer textured shanks each terminating in a snake's head set with a pear-shaped amethyst and turquoise set eyes (2)
 Both signed Cartier and numbered 1139
 €3,500-5,500 US\$4,500-6,900

61
A PAIR OF GEM SET EARRINGS
 Each of girandole design, set with circular citrine tops and supporting three pear-shaped amethyst drops connected by brilliant-cut diamonds (2)
 €1,200-1,800 US\$1,600-2,300

62
A GEM SET BRACELET, BY BULGARI, AND A RING BY CARTIER
 The bracelet composed of hematite beads set in between with amethyst, peridot and citrine spacers, by Bulgari; and a moonstone ring, model Tank, by Cartier (2)
 The bracelet signed Bulgari, 1988; the ring signed Cartier, numbered G05606, 1997
 €1,600-2,600 US\$2,100-3,300



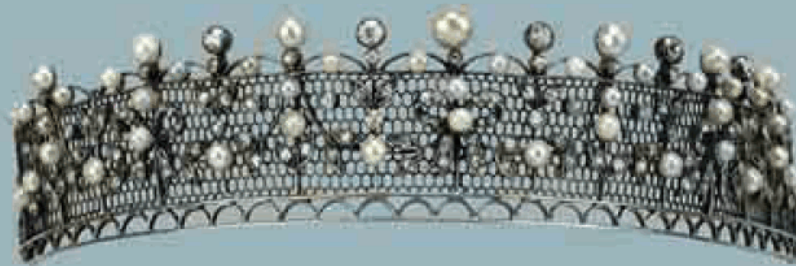
57

63
AN ANTIQUE AMETHYST AND NATURAL PEARL BRACELET
 Composed of seven step-cut amethysts connected by spiral-shaped spacers and seedpearls, cased by Warski (2)
 €2,000-4,000 US\$2,600-5,100



63





64

THE PROPERTY OF A GENTLEMAN

64

AN ANTIQUE PEARL AND DIAMOND TIARA

Designed as a fine mesh band applied with ribbon bows and floral scenes set with natural pearls and circular-cut diamonds supporting a row of larger pearls and diamonds, *circa 1900*
 €6,000-8,000

US\$7,600-10,000

68

A PAIR OF NATURAL PEARL AND DIAMOND EARRINGS

Each earring supporting a silver grey baroque pear-shaped natural pearl drop suspended from a line of circular-cut diamonds (3)
Accompanied by a N.E.L. report No. P4910, dated 27 May 2009, stating that both pearls are natural
 €8,000-12,000

US\$11,000-15,000

OTHER PROPERTIES

Δ•65

A BELLE EPOQUE NATURAL PEARL AND DIAMOND PENDANT

Designed as a diamond-set crown supporting a central old-cut diamond to millegrain-set diamond garlands and three natural pearl pendants, *circa 1915*, with a fine chain, *original case stamped Auguste Feys Joaillier-Orfèvre de la Cour, Bruxelles* (2)
 €2,600-3,000

US\$3,300-3,800

69

AN ANTIQUE NATURAL PEARL AND DIAMOND DOG COLLAR NECKLACE

The necklace strung with nine rows of seed pearls divided by diamond set bars, *circa 1900, 32.0 cm long* (2)
Accompanied by a N.E.L. report No. P4772, dated 26 May 2006, stating the pearls to be natural
 €5,000-7,000

US\$6,400-8,800

66

A DIAMOND ETERNITY RING

Set with a line of brilliant-cut diamonds, Ring size 7.5
 €1,000-2,000

US\$1,300-2,500

70

A FINE PAIR OF ROSE-CUT DIAMOND EARRINGS

Each composed of three rose-cut diamond set flowers supporting pear-shaped diamond set drops, connected by three diamond set chains to the single stone set summit (2)
 €10,000-15,000

US\$13,000-19,000

THE PROPERTY OF A GENTLEMAN

71

A DIAMOND CROSSOVER RING

Set with two cushion-shaped diamonds weighing 4.10 and 3.56 carats respectively, between diamond set shoulders, *circa 1920*
 €10,000-15,000

US\$13,000-19,000

67

AN ANTIQUE DIAMOND BIRD BROOCH

Designed as a bird in flight, set throughout with old-cut diamonds
 €3,000-5,000

US\$3,800-6,300



67



OTHER PROPERTIES

72

A BELLE EPOQUE PEARL, SAPPHIRE AND DIAMOND TASSEL SAUTOIR

The necklace strung with small natural pearls supporting a detachable pendant with a fringe of seedpearls to an umbrella shaped surmount pavé-set with cushion-shaped diamonds set in between with lines of calibrated sapphires, *circa 1920*
 €6,000-8,000 US\$7,600-10,000

73

AN ANTIQUE RUSSIAN SILVER CIGARETTE CASE

Rectangular shape, with triangular embossed decoration, cabochon sapphire thumbpiece, gilt interior, with match compartment, plaited tinder-cord and silver chain with acorn terminal, *10.0 cm long, with mark of Ivan Arkarov, 1895-1917, assaymaster Yakov Lyapimov 1899-1903, St. Petersburg between 1899 and 1903*
 €800-1,200 US\$1,100-1,500

74

A FINE SAPPHIRE AND DIAMOND RING

The cushion-shaped blue sapphire flanked by two old-cut diamonds
 €7,000-9,000 US\$8,900-11,000

75

A BELLE EPOQUE SPINEL AND DIAMOND BROOCH

Designed as a finely pierced circular front pavé-set with numerous circular-cut diamonds, centering a large cushion-shaped blue spinel, four larger diamonds set at the cardinal points, the base with scrolled bow motifs, *circa 1910*
 €4,000-6,000 US\$5,100-7,600

76

A PAIR OF DIAMOND EARRINGS

Each composed of three tassels of millegrain-set circular-cut diamonds from a single stone set surmount (2)
 €2,800-4,000 US\$3,600-5,100

**77

A PAIR OF SEA SHELL EARCLIPS, BY SEAMAN SHEPPS

Each shell within a gold frame set with a cabochon sapphire (2)
 One clip signed Seaman Shepps S.V.O.F.
 €1,000-1,500 US\$1,300-1,900

THE PROPERTY OF A LADY

78

AN ART DECO SAPPHIRE AND DIAMOND BRACELET

Composed of diamond set octagonal loops connected by baguette sapphire set links, *circa 1925, 17.5 cm long*
 €10,000-15,000 US\$13,000-19,000

79

A SAPPHIRE BANGLE

The bangle composed of an openwork lace band, the front set with a line of oval-cut sapphires
 €2,000-3,000 US\$2,600-3,800



75

79



THE PROPERTY OF A GENTLEMAN

80

A DIAMOND RIVIERE NECKLACE

Composed of a line of graduated circular-cut diamonds, *40.0 cm long*
 €10,000-15,000 US\$13,000-19,000

OTHER PROPERTIES

81

A PAIR OF DIAMOND EARCLIPS

Each designed as a flowerhead, pavé-set with single-cut diamonds, the centre set with larger brilliant-cut stones (2)
 €2,500-3,500 US\$3,200-4,400

782

A GEM SET AND DIAMOND BUTTERFLY BROOCH

The wings set with lines of graduated emeralds flanked by cushion-shaped and rose-cut diamonds to the ruby and diamond set abdomen, supporting two chains terminating in pear-shaped diamond set drops, *French marks, circa 1930*
 €1,000-2,000 US\$1,300-2,500

83

A SAPPHIRE AND DIAMOND RING AND A PAIR OF DIAMOND EARRINGS

The ring set at the front with a rose-cut diamond surrounded by calibrated sapphires and smaller diamonds; the earrings of cluster design, set with similar diamonds (3)
 €2,000-3,000 US\$2,600-3,800



88

84

A PAIR OF PERIDOT AND DIAMOND EARRINGS

Each set with a pear-shaped peridot within a graduated old-cut diamond surround (2)
 €4,000-6,000 US\$5,100-7,600

85

AN UNMOUNTED DIAMOND

The emerald-cut diamond weighing 2.40 carats
 €4,500-6,500 US\$5,700-8,200

+86

AN ART DECO DIAMOND RING

Set with a circular-cut diamond weighing 2.34 carats between baguette diamond set shoulders, *circa 1930*
 €7,000-9,000 US\$8,900-11,000

87

A DIAMOND BRACELET

Set with a line of brilliant-cut diamonds, *17.8 cm long*
 €1,000-1,500 US\$1,300-1,900

88

A RUSSIAN FLOWER VASE MINIATURE

Designed as a lily-of-the-valley on a rock crystal base, nephrite leaf, the gold stem terminating in frosted quartz flowerheads with diamond set pistils, *Russian marks* (2)
 €2,000-3,000 US\$2,600-3,800





89

THE PROPERTY OF A LADY

89

A DIAMOND NECKLACE

Composed of graduated openwork scroll motifs set with cushion-shaped diamonds mounted to a gold necklace, *formerly a tiara remounted as a necklace, tiara part 19th Century*

€4,000-6,000 US\$5,100-7,600

93

A PAIR OF SOUTH SEA CULTURED PEARL EARRINGS

Each set with silvery-white and an *asbergine* coloured South Sea cultured pearl each surmounted by a brilliant-cut diamond (2)

€1,000-1,500 US\$1,300-1,900

OTHER PROPERTIES

90

AN ART DECO ENAMEL AND DIAMOND VANITY CASE, BY JANESICH

The rectangular case black enamelled with white enamel wavy pattern along the border, centering a diamond set monogram, opening to reveal two compartments, a lipstick holder, a mirror, a cardholder and a pen with writing tablet, to a pearl and black enamelled baton chain on a diamond set loop, *circa 1925*

Signed Janesich Paris - Monte Carlo - Vichy
€8,000-10,000 US\$11,000-13,000

94

A DIAMOND RING, BY CHOPARD

The flexible penannular band composed of paisly segments set with brilliant-cut diamonds

Signed Chopard, numbered G9118V8, model Casmir
€1,500-2,500 US\$1,900-3,200

95

A PAIR OF CULTURED PEARL AND DIAMOND EARRINGS

Each earring composed of a grey South Sea cultured pearl surmount supporting a larger baroque cultured pearl drop connected by a brilliant-cut diamond (2)

€1,500-2,500 US\$1,900-3,200

91

A PAIR OF SOUTH SEA CULTURED PEARL AND DIAMOND EARRINGS

Each silver-grey South Sea cultured pearl surmounted by a brilliant-cut diamond (2)

€1,200-1,400 US\$1,600-1,800

92

A SOUTH SEA CULTURED PEARL NECKLACE

Strung with graduated silver-grey South Sea cultured pearls, measuring from 15.2 to 12.2 mm in diameter, to a sapphire set sphere clasp, *47.0 cm long*

€5,000-7,000 US\$6,400-8,800

96

A DIAMOND BRACELET

Designed as a broad band composed of zig-zag links each set with brilliant-cut diamonds, *19.0 cm long*

€4,000-6,000 US\$5,100-7,600



90

24





97

97
A PAIR OF ROCK CRYSTAL AND MALACHITE OBELISKS
 The rock crystal segments divided by malachite sections and foot, mounted in silver (2)
 €800-1,200 US\$1,100-1,500

98
AN ANTIQUE ROSE-CUT DIAMOND RING
 The front set with two opposing pear-shaped rose-cut diamonds, 19th Century
 €1,000-2,000 US\$1,300-2,500

99
AN EMERALD AND DIAMOND NECKLACE
 Composed of graduated openwork panels with neo-gothic motifs set with cabochon emeralds, further enhanced with rose-cut diamonds, connected to multiple chains and a similarly set clasp, 39.0 cm long
 €2,000-4,000 US\$2,600-5,100

THE PROPERTY OF A LADY

100
A RARE ANTIQUE ROSE-CUT DIAMOND PENDANT
 The large rose-cut diamond weighing 11.54 carats to a diamond set surmount on a fine chain, mid 19th Century
 €25,000-35,000 US\$32,000-44,000

OTHER PROPERTIES

101
AN ANTIQUE ENAMEL AND DIAMOND RING
 The oval front set with a cluster of pear-shaped rose-cut diamonds within a royal blue enamelled band surrounded by halfpearls, circa 1800
 €1,600-2,600 US\$2,100-3,300

102
AN ANTIQUE NATURAL PEARL AND DIAMOND BROOCH
 Designed as an old-cut diamond and natural pearl-set flowerhead centring an old-cut diamond weighing 1.17 carats, circa 1890, in original fitted case stamped Bonebakker & Zoon, Hoflevenanciers Amsterdam (2)
 €2,000-4,000 US\$2,600-5,100

103
AN ANTIQUE CRESCENT BROOCH
 Set with three rows of graduated cushion-shaped diamonds, circa 1870
 €2,600-4,600 US\$3,300-5,800

+104
A NATURAL PEARL NECKLACE
 Strung with graduated natural pearls to a diamond set barrel-shaped clasp, 54.0 cm long
 €1,500-2,500 US\$1,900-3,200

105
A PAIR OF MALACHITE CANDLESTICKS
 Each with a carved malachite plinth and stem with gilt scone, early 20th century, 16.5 cm long (2)
 €1,500-2,500 US\$1,900-3,200

END OF MORNING SESSION



105



AFTERNOON SESSION
AT 2.00 PM

THE PROPERTY OF A EUROPEAN COLLECTOR

****106**

AN ANTIQUE SNUFF BOX

Of circular shape, tortoiseshell exterior, with engraved snake encircling the lid, applied with a foiled citrine rosette, plain gold interior, *apparently unmarked, circa 1800*

US\$3,800-6,300
€3,000-5,000



106

OTHER PROPERTIES

***107**

A FINE 18K GOLD HUNTER QUARTER REPEATING KEYLESS LEVER WATCH WITH CHAIN, BY LEGA

Gilt-finished jewelled lever movement, quarter repeating with one hammer onto one gong, glazed cover, gold cuvette, white enamel dial with Arabic numerals, subsidiary seconds, inner Arabic five minute divisions, circular case with engraved monogram, repeating slide in the band, together with an 18k gold chain with French mark for gold, 19 grs, *case and dial signed, 55mm diam* (2)

Signed Lega, case no. 324579, circa 1906
€1,500-2,500

US\$1,900-3,200



107

28



108

108
AN 18K GOLD AUTOMATIC WRISTWATCH WITH DATE, POWER RESERVE AND CO-AXIAL ESCAPEMENT, BY OMEGA
 With nickel-finished lever movement, 29 jewels, co-axial escapement, the silvered dial with applied baton numerals, luminous hands, window for date, two engine-turned subsidiary dials for seconds and power reserve, in circular water-resistant-type case with stepped bezel and screw back, with an 18k gold Omega concealed deployant clasp, *case, dial and movement signed, 39mm diam.* (2)
 Signed Omega, De Ville Automatic Chronometer, Circa 2002
 This watch is accompanied by an Omega presentation box and International Warranty
 €2,000-4,000 US\$2,600-5,100



109

109
AN 18K GOLD SKELETONIZED WRISTWATCH, BY VAN CLEEF & ARPELS
 With finely engraved and skeletonized nickel-finished jewelled lever movement, the engraved and skeletonized dial with Roman and baton numerals to the outer silver chapter ring, the circular case with raised bezel, t-lugs, snap on back, *case signed, 31mm diam.*
 Signed Van Cleef & Arpels Paris, no. 12125 33245, circa 1995
 €2,000-3,000 US\$2,600-3,800

THE PROPERTY OF A GENTLEMAN

+110
AN 18K GOLD OCTAGONAL WRISTWATCH WITH HINGED BACK, BY PATEK PHILIPPE
 Cal. 10th gilt-finished lever movement, 15 jewels, white dial, Arabic numerals, octagonal case, hinged back, *case, dial and movement signed, 24 mm. wide & 47 mm. overall length*
 Signed Patek Philippe & Co., Geneva, movement No. 165'632, case No. 600'256, manufactured in 1912
 €3,500-4,500 US\$4,500-5,700

111
A 14K PINK GOLD TONNEAU-SHAPED "PETROGRAD" WRISTWATCH WITH HINGED BACK, BY OMEGA
 Cal. 13th SOB nickel-finished jewelled lever movement, gilt dial, Arabic numerals, subsidiary seconds, outer railway minute divisions, tonneau-shaped case, hinged back, *dial and movement signed, 36 mm. wide & 58 mm. overall length*
 Signed Omega, movement No. 4'621'160, case of Russian production, stamped 56, manufactured in 1916
 €2,000-3,000 US\$2,600-3,800

112
AN 18K GOLD RECTANGULAR WRISTWATCH, BY PATEK PHILIPPE
 Cal. 9th rectangular-shaped nickel-finished lever movement, 18 jewels, two-tone silvered dial, gold baton numerals, subsidiary seconds, rectangular case, snap on back, *case, dial and movement signed, 21 mm. wide & 42 mm. overall length*
 Signed Patek Philippe & Co., Geneva, movement No. 832'909, case No. 618'421, circa 1938
 €4,000-6,000 US\$5,100-7,600



110



111



112

29

OTHER PROPERTIES

113

A LADY'S 18K GOLD WRISTWATCH, BY CARTIER

With nickel-finished jewelled lever movement, the white dial with Roman numerals, blued steel hands, the small rectangular case with cabochon sapphire-set crown, the back secured by four screws in the band, together with an 18K gold Cartier deployant clasp, *case and dial signed*, 28mm long

Signed Cartier, model: Mini Tank, case no. 031353, circa 1990
 €1,500-2,000 US\$1,900-2,500

114

A LADY'S 18K GOLD TONNEAU AUTOMATIC WRISTWATCH WITH CENTER SECONDS AND BRACELET, BY CARTIER

With nickel-finished lever movement, white matte dial with Roman numerals, secret Cartier signature at 7 o'clock, circular water-resistant-type case with octagonal screw-set bezel, the back secured by four screws, sapphire-set crown, case, dial and movement signed, with an 18k gold Cartier Santos bracelet and deployant buckle 28mm diam.

Accompanied by Cartier red leather-covered box, Cartier guarantee and extra links
 €3,000-6,000 US\$3,800-7,600



113



114



115



116

115

AN 18K GOLD AUTOMATIC WATER-RESISTANT WRISTWATCH WITH SWEEP CENTRE SECONDS, BY ROLEX

With nickel-finished lever movement, the brushed gilt dial with applied baton numerals with luminous accents, luminous dauphine hands, sweep centre seconds, in circular water-resistant-type case with fluted bezel, screw back and screw down crown, to an 18k gold woven Rolex bracelet, *case, dial and movement signed*, 34mm diam. (2)

Signed Rolex Oyster Perpetual, ref. 1005, case no. 1785418
 Delivered with wooden original case
 €3,000-4,000 US\$3,800-5,100

116

AN 18K GOLD AUTOMATIC WRISTWATCH WITH SWEEP CENTRE SECONDS AND DATE, BY ROLEX

With nickel finished lever movement, 26 jewels, the textured gilt dial with applied baton numerals, sweep centre seconds, magnified window for the date, aperture for the day, the tonneau-shaped water-resistant-type case with screw back and screw down crown, with an 18K gold Rolex President bracelet and deployant clasp, *case, dial and movement signed*, 36mm diam.

Signed Rolex, Oyster Perpetual Day-Date, ref. 18038, case no. 5530964, circa 1990
 €3,000-6,000 US\$3,800-7,600



117



117

117
TWO 18K GOLD WRISTWATCHES, BY BUCHERER

One watch with automatic movement, two tone dial with applied baton numerals, date aperture, to tapering matted gold bracelet with oval openwork links; The other with quartz movement, gold dial with applied baton numerals, date aperture, to a matted gold tapered bracelet, *case, dial and movement signed* (2)

Signed Bucherer, no. 30 191, circa 1970
€1,200-2,200

US\$1,600-2,800

118
A LADY'S 18K GOLD BRACELET WATCH, BY CHANEL

With quartz movement, cut-cornered black dial with faceted glass, gold plain bezel to an integral gold curb-link bracelet, *case and dial signed, 15.5 cm total length*

Signed Chanel, no. R.H. 10988, 1987
€2,000-4,000

US\$2,600-5,100

119
FOUR LADY'S WRISTWATCHES

Comprising: a quartz "Cartier Must de 21" stainless steel and gold wristwatch; an 18k gold curb link wristwatch, by Piaget, *circa 1970, 19.0 cm long*; an 18k gold buckle-shaped wristwatch, by Baume & Mercier; and a 14k gold Art Deco tonneau-shaped gold and blue enamel wristwatch (4)
€1,000-2,000

US\$1,300-2,500



118

119 (part)



120

THE PROPERTY OF A GENTLEMAN

120

A STAINLESS STEEL AUTOMATIC CHRONOGRAPH WRISTWATCH WITH BRACELET, BY ROLEX

With nickel finished lever movement, 31 jewels, the matte white dial with applied baton numerals, luminous accents to the hands and numerals, three subsidiary dials indicating constant seconds, 30 minute and 12 hour registers, the water-resistant-type case with engraved bezel calibrated for 200 units per hour, screw back and screw down crown, two screw down chronograph buttons in the band, together with a stainless steel Rolex Oyster bracelet and concealed deployant clasp, *case, dial and movement signed, 39mm. diam.*

Signed Rolex, Oyster Perpetual Daytona, Ref. 16520, Case No. L244097, circa 1998

€10,000-15,000

US\$13,000-19,000

OTHER PROPERTIES

121

A STAINLESS STEEL AND DIAMOND SQUARE AUTOMATIC WATER-RESISTANT TWO TIME ZONE WRISTWATCH, BY DE GRISOGONO

With black steel lever movement, 20 jewels, the black engine-turned dial with two time displays, one with diamond-set dagger and dot numerals, the other with applied Arabic numerals, in curved square case with diamond-set H-shaped lugs, secured by four screws, together with a stainless steel *de Grisogono* concealed double deployant clasp, *case and dial signed, total length including lugs 49mm*

Signed de Grisogono Geneve, model: Instrumentino, no. 009788, circa 2000

€800-1,200

US\$1,100-1,500

122

AN 18K WHITE GOLD DOUBLE DIAL DUAL TIME REVERSO WRISTWATCH, BY JAEGER-LECOULTRE

Cal. 84.5 rectangular-shaped copper-finished lever movement, 21 jewels, one engine-turned black matte dial with applied dagger and Arabic numerals, silvered dauphine hands, subsidiary seconds, the second engine-turned pink dial with applied dagger and luminous Arabic numerals, luminous hands, subsidiary seconds, in rectangular case with ribbed ends, pivoting within the rectangular backplate, 18K white gold Jaeger-LeCoultre deployant clasp, *case, dial and movement signed, 26 mm. wide & 42 mm. overall length* (2)

Signed Jaeger-LeCoultre, Reverso, Night & Day model, case no. 1862652, ref. 270.3.54, circa 1997

€4,000-6,000

US\$5,100-7,600



121



122

123

AN 18K GOLD AND DIAMOND WRISTWATCH, BY PIAGET

With mechanical movement, rectangular black dial with applied baton numerals, diamond-set bezel, snap on back, to an integral textured 18k white gold bracelet, *case, dial and movement signed, 19.0 cm total length*

Signed Piaget, no. 9675 A 6 132552, circa 1970

€1,000-2,000

US\$1,300-2,500



123



124

124

A LADY'S 18K GOLD BRACELET WATCH, BY BOUCHERON

With mechanical movement, 17-jewels, signed Omega, silvered dial with engraved baton numerals, textured bezel with sapphire cabochon crown and integral textured bracelet, *case signed, total length 19.0 cm*

Signed Boucheron, no. 8860, circa 1970

€1,200-2,500

US\$1,600-3,200



125

Φ125

A LADY'S STAINLESS STEEL AND GOLD AUTOMATIC WRISTWATCH WITH SWEEP CENTRE SECONDS AND DATE, BY ROLEX

With nickel-finished lever movement, 29 jewels, glucydur balance, adjusted to 5 positions and temperature, blue metallic dial, baton numerals, magnified aperture for date, stainless steel tonneau water-resistant-type case with gold fluted bezel, screw back and screw-down crown, with stainless steel and gold *Rolex Jubilee* bracelet and deployant clasp *case, dial and movement signed, 26mm diam.*

Signed Rolex, Oyster Perpetual, Datejust, case no. S237532, ref. 69173, circa 1990

€1,400-2,400

US\$1,800-3,000



126 (part)



127

126

A COLLECTION OF JEWELLERY

Comprising: an emerald and tapered baguette diamond ballerina cluster ring; a diamond set ribbon bow brooch; a woven gold bracelet with diamond set centre; and a lady's watch with diamond set bezel to a brilliant-cut diamond set bracelet, *17.5 cm long* (4)

€2,000-3,000

US\$2,600-3,800

127

AN 18K GOLD OVAL WRISTWATCH, BY CARTIER

With mechanical movement, the white dial with black Roman numerals, in oval case with raised bezel, cabochon sapphire-set crown, together with an 18K white gold Cartier deployant clasp, *case, dial and movement signed*

Signed Cartier, Baigmoire model, case no. 780941436, circa 1990

€1,000-2,000

US\$1,300-2,500

128

AN INDIAN GEM SET AND ENAMEL NECKLACE

The front with a row of tear-shaped ornaments set with green paste alternating with parts set with white sapphire, supporting a fringe of seedpearls, emerald and green paste beads, surmounted by five larger pearls, to a silk strap adjustable in size, the reverse polychrome enamelled, *early 20th Century*

€2,000-3,000

US\$2,600-3,800

129

A PAIR OF HARDSTONE NOVELTY CUFF LINKS

Each link designed as an onyx and jasper ladybird connected by gold chains (2)

€1,000-1,500

US\$1,300-1,900

130

AN ART DECO ENAMEL AND DIAMOND BROOCH

The square black enamelled pendant with diamond set panel opening to reveal a compartment, suspended from a diamond and cabochon onyx brooch fitting, *circa 1925*

€2,600-3,600

US\$3,300-4,500

**131

AN ART DECO ENAMEL AND DIAMOND BLACKAMOOR BROOCH, BY CARTIER

The black enamelled face with pearl earrings, white enamelled turban with rose-cut diamond *appliqué*, *Cartier fitted case*

Signed Cartier Paris, numbered 95207 00931

€3,500-4,500

US\$4,500-5,700

132

A DIAMOND BRACELET

Composed of hexagonal links set with brilliant-cut diamonds flanked by two rows of single-cut stones, *18.5 cm long*

€5,000-7,000

US\$6,400-8,800

**133

AN ART DECO CORAL ONYX AND DIAMOND BROOCH

The oval onyx panel applied with a carved coral panel with diamond set rim, connected by fine chains to a circular onyx loop and halfround onyx surmount with coral terminals, *circa 1925*

€2,200-2,400

US\$2,800-3,000

**134

A PAIR OF CORAL AND DIAMOND CUFF LINKS

Each coral link of carved ribbed shape set with a diamond connected by an onyx bead (2)

€800-1,200

US\$1,100-1,500







135

135

A PAIR OF DIAMOND EARRINGS

Each flexible lozenge drop composed of diamond set navette links, from a diamond set loop link surmount (2)

€4,000-6,000

US\$5,100-7,600

136

A CULTURED PEARL, ONYX AND DIAMOND BRACELET

Strung with six rows of cultured pearls divided by rows of onyx beads and diamond set pierced bars, 18.5 cm long

€3,000-5,000

US\$3,800-6,300

137

A PAIR OF ONYX AND DIAMOND EARRINGS

Each tapered onyx drop applied with a pierced diamond set panel to the tapered diamond set surmount (2)

€2,000-5,000

US\$2,600-6,300

138

A PAIR OF ART DECO ONYX AND DIAMOND CUFF LINKS

Each designed as a tapered panel set with geometrically-shaped onyx and a circular-cut diamond, *circa 1920* (2)

€800-1,200

US\$1,100-1,500

139

A BELLE EPOQUE DIAMOND PENDANT

Millegrain-set with a circular-cut diamond, *circa 1915*

€10,000-15,000

US\$13,000-19,000

THE PROPERTY OF A LADY

140

A DIAMOND SINGLE STONE RING

Set with a step-cut diamond within plain white gold shoulders

€12,000-15,000

US\$16,000-19,000

OTHER PROPERTIES

141

A DIAMOND ETERNITY BAND

Channel-set with a line of princess-cut diamonds, *Ring Size 7.5*

€1,400-1,800

US\$1,800-2,300

142

A GENTLEMEN'S ONYX AND DIAMOND DRESS SET, BY MARGHERITA BURGNER

The pair of cufflinks and four shirt studs each set with a square cabochon onyx surrounded by brilliant-cut diamonds (6)

Signed Margherita Burgener

€2,400-2,800

US\$3,100-3,500





143A

W143

A GEM SET AND DIAMOND BRACELET

Designed as a band with diamond set meandering line terminating in carved ruby, emerald and sapphire leaves, to a diamond set buckle-shaped clasp, 19.0 cm long

€8,000-12,000

US\$11,000-15,000

146

AN EMERALD AND DIAMOND DRESS RING

The oval front set with two step-cut emeralds surrounded by graduated brilliant-cut diamonds

€2,000-3,000

US\$2,600-3,800

****143A**

A PAIR OF GEM-SET BIRD EARRINGS

each earring designed as a parrot on it's perch, the plumage pave-set with green garnets, rubies and yellow diamonds, pink coral beaks, suspended from a diamond-set heart-shaped sumount

€2,000-3,000

US\$2,600-3,800

147

AN EMERALD AND DIAMOND DRESS RING AND A BROOCH

The ring set with a step-cut emerald within a border of brilliant-cut diamonds; the brooch of cluster design, set with circular-cut emeralds and brilliant-cut diamonds, circa 1960

€1,500-2,500

US\$1,900-3,200

W144

A CARVED GEM-SET AND DIAMOND NECKLACE

The front with diamond-set branches enhanced by carved ruby, emerald and sapphire leaves and berries, to a sapphire bead backchain and similarly-set clasp, 42.0 cm long

€16,000-26,000

US\$21,000-33,000

148

AN ART DECO EMERALD AND DIAMOND RING

Set with a square-cut emerald flanked by circular-cut and graduated baguette diamond set shoulders, circa 1925, with additional modern yellow gold ring guard

€1,500-2,000

US\$1,900-2,500

W145

A GEM SET AND DIAMOND BROOCH

Designed as a bunch of flowers with carved ruby, sapphire and emerald leaves, three larger cushion-shaped diamonds set in between

€4,000-6,000

US\$5,100-7,600

149

A DIAMOND NECKLACE

Composed of a line of spectacle-set circular-cut diamonds, 42.5 cm long

€4,500-6,500

US\$5,700-8,200





144

145

146

147 (part)

148

149



150



151

150
A PAIR OF CHALCEDONY AND DIAMOND EARRINGS
 Each designed as a diamond-set star supporting a chalcodony drop (2)
 €1,500-2,600 US\$1,900-3,300

151
A SAPPHIRE AND DIAMOND RING
 Set with a cabochon blue sapphire between shoulders pavé-set with brilliant-cut diamonds
 €2,500-4,500 US\$3,200-5,700

152
A DIAMOND NECKLACE
 The necklace of cable linking, the loops partly pavé-set with brilliant-cut diamonds, 44.5 cm long
 €2,600-3,600 US\$3,300-4,500

153
A PAIR OF CULTURED PEARL AND DIAMOND EARRINGS
 Each cultured pearl drop suspended from a line of brilliant-cut diamond set links (2)
 €2,000-3,000 US\$2,600-3,800

154
A CONTEMPORARY SAPPHIRE AND DIAMOND RING
 The rectangular front composed of two swiveling corners each pavé-set with fields of circular-cut sapphires, cognac and white coloured diamonds
 €1,800-2,800 US\$2,300-3,500

155
A PAIR OF DIAMOND EARCLIPS AND A MATCHING RING
 Each earclip designed as a ribbon bow set with baguette and brilliant-cut diamonds; the ring of similar design, circa 1960 (3)
 €2,200-2,400 US\$2,800-3,000

156
A DIAMOND BRACELET
 Set with a line of brilliant-cut diamonds, 18.0 cm long
 €3,000-4,000 US\$3,800-5,100

157
A PAIR OF CHALCEDONY, SAPPHIRE AND DIAMOND CUFF LINKS
 Each lavender coloured chalcodony within a border of brilliant-cut diamonds to a reeded sapphire set baton link (2)
 €1,000-1,500 US\$1,300-1,900



157





158



159

Ψ158

A RUBY AND DIAMOND RING

Set with a large ruby cabochon flanked by two brilliant-cut diamonds

Signed Schilling

€3,000-5,000

US\$3,800-6,300

Ψ159

A PAIR OF GEM SET AND DIAMOND EARCLIPS BY NEIMAN MARCUS

Each of stylised flowerhead design, set with tapered baguette sapphires and kite-shaped diamonds with ruby and diamond set centre (2)

Signed Neiman Marcus

€8,000-12,000

US\$11,000-15,000

Ψ160

A RUBY AND DIAMOND BANGLE

The swirl front set with three rows of graduated oval-cut rubies flanked by two rows of brilliant-cut diamonds (2)

Accompanied by a N.E.L. report No. E14851 dated 02-04-2007 stating the rubies to be natural with properties associated with rubies from Myanmar (Birma) with no indication of heat

€15,000-20,000

US\$19,000-25,000

161

A DIAMOND BAND RING

The front set with a line of graduated baguette diamonds flanked by brilliant-cut stones

€1,800-3,000

US\$2,300-3,800

Ψ162

A DIAMOND BRACELET AND A RUBY BRACELET

One bracelet set with a line of brilliant-cut diamonds, 17.5 on long, and a square-cut ruby line bracelet, 18.0 on long (2)

Both bracelets signed Schilling

€1,400-2,400

US\$1,800-3,000

Ψ163

A RUBY AND DIAMOND BAND RING

The split front set with an oval-cut ruby surrounded by brilliant-cut diamonds

€1,600-2,600

US\$2,100-3,300

Ψ164

A PAIR OF FLOWER RUBY EARCLIPS, BY ANDREA MOLINARI

Each designed as a flowerhead pavé-set with circular-cut rubies, mounted in palladium (2)

Signed AM

€2,000-4,000

US\$2,600-5,100

Ψ165

A PAIR OF GEM SET CUFF LINKS

Each of circular shape, set with respectively an oval cut ruby and a step-cut sapphire (2)

€1,000-1,500

US\$1,300-1,900



165





Lots 166-174 and 244 are sold to the benefit of the *Kuychi* foundation. The *Kuychi* foundation supports the work of Helena van Engelen and her project *Ninos del Arco* which helps young Peruvian children with food, education and medical care, and helps to give these victims of poverty, broken families and violence a future perspective.
www.Kuychi.org

•166

A LADY'S 18K WHITE GOLD AND DIAMOND RECTANGULAR WRISTWATCH, BY PIAGET

With quartz movement, the silvered dial with diamond-set dot numerals, in rectangular case with reeded bezel, with an 18k white gold *Piaget* link bracelet to the diamond clasp joining the top edge of the case, *case, dial and movement signed, 20.0 cm total length, extra link*

Signed Piaget, model: Miss Protocole, no. 5222 852150, circa 2000
 €1,500-2,000 US\$1,900-2,500

•167

A GROUP OF DIAMOND-SET JEWELLERY

Comprising: a sapphire and diamond necklace; a diamond necklace; a diamond bracelet; a sapphire and diamond bracelet; a sapphire and diamond cluster ring; a diamond cluster ring; a cultured pearl and diamond ring; a diamond four stone ring; a small diamond ring; a sapphire and diamond brooch; a pair of diamond earclips; a pair of sapphire and diamond earclips and a pair of cultured pearl and diamond earclips (16)
 €2,000-4,000 US\$2,600-5,100

•168

A HEARTWARMING GROUP OF JEWELLERY

Comprising: a segmented necklace set at the front with five diamond-set hearts; a similarly set bangle; a diamond set heart pendant on a twisted wire chain; a diamond set heart ring and a similar pair of earclips (6)
 €2,000-4,000 US\$2,600-5,100

•169

TWO DIAMOND PARURES, BY SVEN BOLTENSTERN

One parure of abstract design set with a circular-cut garnet and a line of brilliant-cut diamonds, matching bangle, ring and earclips; the other parure designed as a plain gold inflexible necklace with onyx and diamond applique, matching bangle, ring and earclips (10)

Maker's mark for Sven Boltenstern, circa 1996
 For similar work of Sven Boltenstern, see page 131 of *Sven Boltenstern*, by Graham Huges, 1993
 €2,000-3,000 US\$2,600-3,800

•170

A DIAMOND PARURE

Comprising: a necklace composed of abstract overlapping segments, the front partly set with lines of brilliant-cut diamonds, 40.5 cm long; a similarly set bracelet, 21.5 cm long; an abstract ring of similar design and a pair of earclips (5)
 €1,000-2,000 US\$1,300-2,500

•171

A COLLECTION OF JEWELLERY

Comprising: a diamond set chain necklace; a woven gold bracelet; a diamond set curb chain bracelet; a gold pill box; a chain with cultured pearl front and thirteen gem set and diamond rings (18)
 €1,500-2,000 US\$1,900-2,500

•172

A COLLECTION OF EMERALD AND DIAMOND JEWELLERY

Comprising: two emerald and diamond cluster rings; an emerald and diamond bangle; an emerald and diamond necklace and a pair of earclips, all circa 1980 (6)
 €1,000-1,500 US\$1,300-1,900

•173

AN 18K GOLD RECTANGULAR WRISTWATCH, BY PIAGET

With quartz movement, square engine-turned gilt dial with dot numerals, dauphine hands, back secured by four screws to an integral 18k gold *Piaget* bracelet, *case and dial signed, 18.5 cm total length, extra links*

Signed Piaget, no. 80317 552153, circa 1980
 €1,500-2,000 US\$1,900-2,500

•174

A LADY'S 18K GOLD AND DIAMOND REVERSIBLE WRISTWATCH, BY JAEGER-LECOULTRE

With nickel-finished jewelled lever movement, the mother-of-pearl dial within a diamond-set frame, dauphine hands, diamond-set bezel, reversing to an engine-turned silvered dial with diamond dot numerals, blued steel hands, diamond-set bezel, diamond-set crown, case with diamond-set shoulders to an 18k gold *Jaeger-LeCoultre* diamond-set brick-link bracelet with concealed double deployant clasp, *case and dial signed, 33mm. long; total length 19 cm with extra links*

Signed Jaeger-leCoultre, model: Reverso Duetto, no. 1883169, circa 2000
 €5,000-7,000 US\$6,400-8,800



166



167 (part)



44

167 (part)





175
A RETRO DIAMOND DRESS RING
 The bow front set with graduated circular-cut diamonds, *circa 1940*
 €2,000-3,000 US\$2,600-3,800

¥**176**
A GEM SET AND DIAMOND DEMI PARURE
 Comprising a woven gold necklet with ruby, sapphire and diamond set bow front; a pair of similarly set earclips, and a ruby sapphire and diamond brooch, *circa 1950, fitted case*
 €3,000-5,000 US\$3,800-6,300

177
A PAIR OF RETRO RUBY AND DIAMOND EARRINGS
 Each earring composed of seven graduated circular panels set with rubies and diamonds, *circa 1940*
 €800-1,200 US\$1,100-1,500

178
A DIAMOND PENDANT
 Set with a pear-shaped diamond weighing 2.02 carats, to a gold chain
 €2,000-4,000 US\$2,600-5,100

179
A DIAMOND SINGLE STONE RING
 Set with a circular-cut diamond weighing 6.38 carats
 €10,000-12,000 US\$13,000-15,000

¥**180**
A GEM SET AND DIAMOND DRESS RING
 Set with a brilliant-cut diamond between diamond set split shoulders enhanced with navette-shaped rubies and circular-cut emeralds
 €2,400-3,400 US\$3,100-4,300

181
A RETRO GOLD AND DIAMOND BRACELET
 The flexible band composed of hexagonal links, partly-set with single-cut diamonds, to bow-shaped terminals pavé-set with diamonds, *circa 1940, 18.0 cm long*
 €5,000-6,000 US\$6,400-7,600

182
A GOLD POWDER COMPACT, BY CARTIER
 The square reeded box opening to reveal a mirrored powder compartment, the lid applied with a diamond set monogram EC, *circa 1940*
 Signed Cartier, numbered 3496
 €3,000-4,000 US\$3,800-5,100





183 (part)



184

183

A COLLECTION OF GOLD JEWELLERY

Comprising: a ropewrist necklace with four tassels; a mesh-link bracelet with matching earclips, 22.5 cm long; and a double curb-link necklace with two diamond clasps (5)

€3,000-4,000 US\$3,800-5,100

184

A DIAMOND PENDANT AND MATCHING EARSTUDS

The pendant set with a brilliant-cut diamond weighing 1.50 carats, the earstuds each set with a brilliant-cut stone weighing 1.02 carats (3)

€3,800-5,800 US\$4,800-7,300

185

A GOLD NECKLACE

Composed of entwined chains terminating in two pear-shaped drops, *circa 1970*

€1,000-1,500 US\$1,300-1,900

ψ186

A RUBY AND DIAMOND BROOCH, BY BULGARI

Designed as a pleasantly surprised owl with cabochon ruby eyes perched on a diamond set twig

Signed Bulgari

€2,500-3,500 US\$3,200-4,400

187

A DIAMOND TIE PIN

Set with a brilliant-cut diamond weighing 2.10 carats

€3,000-5,000 US\$3,800-6,300

****188**

A GEM SET AND DIAMOND PARROT RING

The parrot set throughout with brilliant-cut green and orange garnets, diamonds and a coral beak, perched on a plain band ring

€800-1,200 US\$1,100-1,500

189

AN ENAMEL AND DIAMOND LION BRACELET

Composed of a red enamelled lion's head with emerald eyes and diamond set snout to oval openwork loops connected by a diamond set double loop connection, *circa 1970, made in Italy, 19.0 cm long*

retailed by Bucherer €2,000-4,000 US\$2,600-5,100





191

190

192 (part)

193

190

A GOLD "CARMEN LA CROTALOS" PENDANT, BY SALVADOR DALI
 Designed as a three dimensional female figurine depicting Carmen on a chain with rose-shaped links, 60.0 cm long

Signed Dali, circa 1983

This pendant was a limited edition of The Metropolitan Opera Edition of "Carmen La Crotalos". Only one hundred pendants were made.

€1,200-1,800

US\$1,600-2,300

191

A GOLD NECKLACE

Composed of graduated gold spheres connected by multiple chains, supporting a chain tassel, circa 1960

€1,600-2,600

US\$2,100-3,300

192

A COLLECTION OF TIGER'S EYE QUARTZ JEWELLERY

Comprising: a gold gent's watch with tiger's eye dial, by Piaget; two abstract tiger's eye set rings; a tiger's eye sphere necklace and a bracelet composed of circular links party set with tiger's eye plaques, 18.0 cm long, all circa 1970 (5)

The watch numbered 9467A6 205370

€2,000-4,000

US\$2,600-5,100

193

A WOOD AND DIAMOND CUFF BANGLE

The curved wooden band inset with stylised gold flower motifs and diamond set collets

€1,600-1,800

US\$2,100-2,300



194

194

AN 18K GOLD AND MALACHITE CUFF BRACELET WATCH, BY PIAGET
 With mechanical movement, oval malachite dial with gold Dauphine hands, back secured by four screws, set in a tapered cuff composed of entwined corded wire set with cabochon malachites, case, dial and movement signed, 6.0 cm inner diam., fitted case (2)

Signed Piaget, numbered 9850 D50 191269, circa 1970
 €1,800-2,800 US\$2,300-3,500

195

AN 18K GOLD LAPIS LAZULI AND JADE CUFF BRACELET WATCH, BY PIAGET

With mechanical movement, lapis lazuli dial, gold dauphine hands, back secured by four screws set in a textured gold bracelet with rectangular lapis lazuli and jade panels, case, dial and movement signed, 19.0 cm total length (2)

Signed Piaget, numbered 9212D76 171398, circa 1970
 €2,000-4,000 US\$2,600-5,100



195



196

196

A GEM SET AND DIAMOND BROOCH AND MATCHING EARCLIPS

The brooch designed as a spray of flowers set with cabochon turquoise and lapis lazuli buds enhanced with brilliant-cut diamonds; the earclips of similar design, circa 1960, retailed by Bucherer (3)

€3,000-6,000 US\$3,800-7,600

197

AN 18K GOLD AND LAPIS LAZULI OVERSIZED MEN'S WRISTWATCH, BY PIAGET

With Cal. Beta 21 electroquartz movement, 13 jewels, lapis lazuli dial, gold hands, within a large rectangular case with a triple stepped bezel, the back secured by four screws, leather strap with 18k gold Piaget buckle, case, dial and movement signed, 40mm long

Signed Piaget, case no. 1401 196719, circa 1970
 €1,400-2,400 US\$1,800-3,000



197



198

198

A GEM SET PENDANT ON A GOLD CHAIN

The pendant set with a large cabochon emerald, the front carved with foliate motifs and encrusted with a navette ruby, sapphire, emerald and yellow and white diamond, the mount set with diamonds to a fantasy link chain, circa 1980, French marks, fitted case and retailed by Willem van Pampus (2)
 €3,000-6,000 US\$3,800-7,600

199

A CHRYSOPHRASE NECKLACE WITH EARCLIPS, BY VAN CLEEF & ARPELS

Designed as a gold chain, set with a series of chrysophrase clover links with matching earclips, French mark for gold, 40.0 cm long, each in Van Cleef & Arpels beige poche (3)
 Signed VCA, model: Alhambra, no. B4097 H1
 €2,000-3,000 US\$2,600-3,800

200

A GEM SET AND DIAMOND BROOCH, BY CARTIER

Designed as a plant with carved green and red chalcedony leaves, cabochon sapphire and brilliant-cut diamond set buds in an onyx pot with diamond set rims, circa 1989
 Signed Cartier, numbered 913 103
 €2,000-3,000 US\$2,600-3,800

201

A DIAMOND DRESS RING, BY VAN CLEEF & ARPELS

Designed as a flowerhead, the bombé-shaped centre pavé-set throughout with brilliant-cut diamonds, circa 1950
 Signed V.C.A. and numbered 101 53
 €2,000-3,000 US\$2,600-3,800

202

A COLLECTION OF JEWELLERY

Comprising: five various gold band bracelets; a bracelet, ring and pendant of globe design partly set with brilliant-cut diamonds; a cabochon sapphire ring and a pair of diamond cluster earrings (5)
 €4,500-6,500 US\$5,700-8,200

203

A DIAMOND BRACELET WATCH, BY OMEGA

Designed as a woven gold band, the buckle shaped centre with diamond set rim opening to reveal a circular white dial with baton numerals, to a diamond set clasp, circa 1960, Omega Ladymatic, 19.0 cm long
 Retailed by Meister
 €2,000-4,000 US\$2,600-5,100

204

A GOLD NECKLACE, BY VAN CLEEF & ARPELS

Composed of two colour gold woven links, 97.0 cm long
 Signed VCA and numbered B4062R38
 €4,000-6,000 US\$5,100-7,600

205

A DIAMOND DOG BANGLE, BY BUCHERER

Designed as a graduated curb link bangle terminating in a dog's head with chalcedony eyes and green enameled collar studded with brilliant-cut diamonds
 Stamped CB
 €2,500-3,500 US\$3,200-4,400



205



206

TWO PAIRS OF CONVERTABLE EARCLIPS, BY WILM

Comprising two pairs of earclips, one with tapered baguette diamonds, the other with a steel cabochon surmount together with seven additional detachable drops respectively-set with: coral; diamonds; faceted rock crystal; South Sea cultured pearl and calibrated sapphires; silver and gold; triangular-shaped emerald (18)

Signed with maker's mark for Wilm

€5,000-7,000

US\$6,400-8,800

207

A PANTHER BANGLE, BY CARTIER

Designed as a series of flexible gold panthers each set with an emerald eye, with original fitted Cartier case, 6.0 cm inner diameter (2)

Signed Cartier, model: Panthere, no. 910180

€5,000-7,000

US\$6,400-8,800



206 (part)



207

208

A PAIR OF GOLD EARRINGS, BY BULGARI

Each earring composed of two lines of square and circular segments terminating in openwork circular links (3)

Signed Bulgari

€1,000-2,000

US\$1,300-2,500

209

A SAPPHIRE AND DIAMOND SUITE BY CHRISTOFFEL

Comprising: a flexible flattened tubular necklace with pear-shaped sapphire and baguette diamond clasp; a baguette diamond and sapphire ring and a pair of matching earclips (4)

Signed Christoffel and numbered 001

€2,500-3,500

US\$3,200-4,400

210

A GOLD AND STEEL PANTHER BANGLE, RING AND EARCLIPS, BY CARTIER

The steel bangle with five gold panther motifs within a gold frame, the ring and earclips of similar design, French marks for gold, original case and certificate (4)

Signed Cartier, No. 671780, 673379 52 and 673488

€6,500-8,500

US\$8,300-11,000

211

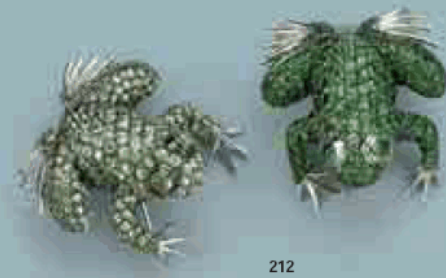
A SAPPHIRE AND DIAMOND BRACELET

Set with three rows of concealed square-cut sapphires flanked by lines of brilliant-cut diamonds, 18.0 cm long

€2,500-4,500

US\$3,200-5,700





212

212
TWO GARNET FROG BROOCHES, BY ANDREA MOLINARI
 One frog pavé-set with circular-cut tsavorite garnets, the other with demantoid garnets (2)
 Signed Andrea Molinari
 €3,000-5,000 US\$3,800-6,300

213
AN EMERALD AND DIAMOND RING, BY VAN CLEEF & ARPELS
 Set with a step-cut emerald within a border of brilliant-cut diamonds to diamond set shoulders
 Signed VCA and numbered B 5118 A23
 €2,000-3,000 US\$2,600-3,800

214
AN EMERALD AND DIAMOND BAND RING
 The split front set with a step-cut emerald surrounded by brilliant-cut diamonds
 €1,600-2,600 US\$2,100-3,300

215
A CULTURED PEARL, GEM SET AND DIAMOND NECKLACE
 Strung with uniform cultured pearls divided by diamond set spacers, supporting a pendant set with a pear-shaped emerald and cabochon sapphire surrounded by brilliant-cut diamonds, 42.0 cm long
 €1,000-1,500 US\$1,300-1,900

216
A SOUTH SEA CULTURED PEARL AND DIAMOND NECKLACE
 Strung with graduated baroque-shaped South Sea cultured pearls divided by diamond set spacers to a diamond set sphere clasp, 61.0 cm long
 €3,000-5,000 US\$3,800-6,300

217
A GROUP OF CULTURED PEARL, EMERALD AND JADE JEWELLERY
 Comprising: a baroque cultured pearl, jade cabochon, emerald and diamond stylised tree brooch; a pair of foliate brooches set with carved emerald leaves and cultured pearl buds and a cultured pearl and ruby ring, circa 1970 (4)
 €1,400-2,400 US\$1,800-3,000

218
A JADE AND DIAMOND RING
 Designed as a brilliant-cut diamond set frog seated on a jade waterlily to a black oxidised gold mount interspersed with small diamonds
 €2,000-3,000 US\$2,600-3,800



218



Ψ219

A RETRO EVENING BAG, BY BOUCHERON

The black silk evening bag with detachable gold compact with pierced engraved front depicting butterflies and flowers, set with rubies, opening to reveal a powder compact and mirror compartment, and a similarly set lipstick holder, *circa 1940*

Signed Boucheron, the compact numbered 875012
 €3,500-4,500 US\$4,500-5,700

220

A RETRO GOLD NECKLACE AND BRACELET

Each of tubogaz design, *circa 1940*, length respectively 42.0 and 19.0 cm long (2)
 €1,000-1,500 US\$1,300-1,900

221

A COLOURED DIAMOND AND DIAMOND BAND RING

The split front set with a champagne coloured brilliant-cut diamond surrounded by white coloured smaller diamonds
 €1,600-2,600 US\$2,100-3,300

THE PROPERTY OF A GENTLEMAN

222

AN UNMOUNTED DIAMOND

The emerald-cut diamond of fancy yellowish brown colour weighing 17.91 carats
Accompanied by a H.R.D. report No. 09001724001 dated February 4, 2009, stating the stone to be of natural fancy yellowish brown colour and VS2 clarity
 €60,000-80,000 US\$76,000-100,000

OTHER PROPERTIES

223

A COLLECTION OF JEWELLERY

Comprising: a citrine and diamond clip/brooch, by Wilm; a curb link bracelet set with four large oval pink tourmalines, 21.0 on long; a six row *peau d'ange* coral necklace with diamond terminals, 40.0 cm long; and four novelty brooches, a rabbit, a swan, a ladybird and a cat (7)
 €1,500-2,000 US\$1,900-2,500

224

AN OPAL AND DIAMOND TURTLE RING

The turtle with cabochon opal shield, the tail, paws and head pavé-set with cognac coloured brilliant-cut diamonds
 €1,400-1,600 US\$1,800-2,000

225

A COLOURED DIAMOND PENDANT AND RING

The pendant of torpedo shape, set with a brilliant-cut brownish coloured diamond weighing 4.26 carats; and a diamond single stone ring set with a deep brownish coloured brilliant-cut diamond weighing 0.95 carat (2)
 €2,600-4,600 US\$3,300-5,800

226

A COLOURED DIAMOND LINE BRACELET

Set with a row of cognac-coloured brilliant-cut diamonds, 18.0 on long
 €1,000-1,500 US\$1,300-1,900



219





227

227
A PINK SAPPHIRE AND DIAMOND DRESS RING
 The two lobed front pavé-set with circular-cut pink sapphires and brilliant-cut diamonds
 €2,200-3,200 US\$2,800-4,000



228

228
AN ANTIQUE ENAMEL AND DIAMOND PENDANT
 Designed as a central polychrome enamelled angel face set between two old-cut diamond set wings supporting a diamond set flowerhead drop, a compartment at the reverse, *mid 19th Century*
 €3,000-4,000 US\$3,800-5,100

+229
A PAIR OF DIAMOND EARSTUDS
 Each set with a cushion-cut diamond respectively weighing 1.52 and 1.42 carats (2)
 €2,000-4,000 US\$2,600-5,100

THE PROPERTY OF A GENTLEMAN
230
A COLOURED DIAMOND AND DIAMOND PENDANT
 The pendant centring a pear-shaped fancy intense purplish-pink diamond weighing 0.69 carats in a diamond-set surround (2)
With certificate 14307272 dated 09 May 2005 from the Gemological Institute of America (GIA) stating that the diamond is fancy intense purplish-pink, natural colour and SI2 clarity
 €20,000-30,000 US\$26,000-38,000

OTHER PROPERTIES

231
A PAIR OF SAPPHIRE AND DIAMOND EARRINGS
 Designed as a cascade of pink and violet coloured heart-shaped sapphires set in between with brilliant-cut diamonds (2)
 €6,000-8,000 US\$7,600-10,000

232
A GEM SET BEAD NECKLACE
 Strung with graduated beads of pink opal, green grossular garnet, pink tourmaline and South Sea cultured pearls divided by diamond set spacers, 58.0 cm long
 €2,000-4,000 US\$2,600-5,100

****233**
A GROUP OF CORAL AND SAPPHIRE JEWELS
 The earrings each designed as a flowerhead pavé-set with purple and violet sapphires with pink coral bud; the dress ring of similar design (3)
 €2,200-3,200 US\$2,800-4,000

234
A COLLECTION OF JEWELLERY
 Comprising: a moonstone Tank ring, by Cartier; a pair of earrings composed of graduated chevron links set with diamonds, supporting a cultured pear drop; and a square-cut diamond set eternity band, *Ring size 6.5* (4)
 Tank ring signed Cartier, numbered H26101
 €3,000-5,000 US\$3,800-6,300

235
A MODERN RUSSIAN PHOTOFRAME
 The heart-shaped pink guilloché enamel frame surmounted by a pearl-set ribbon with central oval photo compartment, *Russian mark for gold and maker's mark*
 €1,400-2,400 US\$1,800-3,000



235



Coloured Diamonds



237



238



239



236

PROPERTY OF A GENTLEMAN

236

A COLOURED DIAMOND PENDANT

The openwork pendant set with an oval yellow diamond weighing 1.14 carat

Accompanied by a H.R.D certificate No. 9000603003 dated February 2, 2009 stating the stone to be of natural fancy intense yellow colour and VVS2 clarity

€4,000-6,000

US\$5,100-7,600

237

A COLOURED DIAMOND AND DIAMOND PENDANT

The circular pendant with sun-shaped centre set with a light blue diamond weighing 0.61 carats within a border of brilliant-cut diamonds

€4,000-6,000

US\$5,100-7,600

238

A COLOURED DIAMOND PENDANT

The swirl-shaped pendant set with a brilliant-cut olive coloured diamond weighing 0.64 carats (2)

Accompanied by a H.R.D. report No. 20011241902 dated 03/09/2001 stating the stone to be of Natural Fancy Olive colour

€1,000-2,000

US\$1,300-2,500

239

A COLOURED DIAMOND AND DIAMOND PENDANT AND MATCHING EARRINGS

The openwork pendant set with a navette-shaped greyish blue coloured diamond weighing 0.25 carat, to a similarly shaped brilliant-cut diamond set mount to a fine chain; and a pair of diamond set earrings (5)

Accompanied by a H.R.D. report No. 09000603001 dated February 3, 2009, stating the stone to be of natural fancy greyish blue colour, VVS1 clarity

€3,000-5,000

US\$3,800-6,300

OTHER PROPERTIES

240

A PAIR OF SOUTH SEA CULTURED PEARL AND DIAMOND EARCLIPS

Each South Sea cultured pearl measuring approximately 15 mm in diameter within a border of petals pavé-set with brilliant-cut diamonds (2)

€2,600-3,500

US\$3,300-4,400



241
AN UNMOUNTED DIAMOND
 The step-cut stone weighing 5.24 carats
 €20,000-30,000 US\$26,000-38,000

242
A SOUTH SEA CULTURED PEARL AND DIAMOND NECKLACE
 Comprising 35 cultured pearls measuring from 14.0 to 10.5 mm diameter on a sphere-shaped brilliant-cut diamond-set clasp, 44.0 cm long
 €2,000-3,000 US\$2,600-3,800



241

243
A PLATINUM DIAMOND BRACELET, BY OSCAR HEYMAN
 Designed as a flexible band set with various circular-cut diamonds, centering three larger diamonds, 16.5 cm long (2)
 Maker's mark for Oscar Heyman
 Accompanied by an attest by Oscar Heyman & Brothers, New York, that the bracelet was manufactured by stated company
 €10,000-15,000 US\$13,000-19,000



240



243

242



244 (part)

SOLD TO THE BENEFIT OF THE KUYCHI FOUNDATION

244

A GROUP OF CULTURED PEARL JEWELLERY

Comprising: a three row cultured pearl necklace to a diamond cluster clasp, *41.0 cm long*; a three row cultured pearl bracelet on a diamond cluster clasp, *24.0 cm long*; and an endless cultured pearl necklace with diamond set clasp, *86.0 cm long* (3)
 €1,500-2,000 US\$1,900-2,500

OTHER PROPERTIES

245

A DIAMOND SINGLE STONE RING

Set with a brilliant-cut diamond weighing 2.45 carats, to a plain white gold mount
 €3,000-5,000 US\$3,800-6,300

246

A DIAMOND BAND RING

Designed as an openwork foliate band set with navette and brilliant-cut diamonds
 €1,000-2,000 US\$1,300-2,500

247

A PAIR OF DIAMOND EARCLIPS

Each earclip composed of a graduated line of tapered baguette diamond set clusters terminating in a cultured pearl drop, *circa 1960* (2)
 €1,000-2,000 US\$1,300-2,500

THE PROPERTY OF A LADY

248

A DIAMOND SINGLE STONE RING

Set with a circular-cut diamond weighing 5.05 carats
 €12,000-15,000 US\$16,000-19,000

OTHER PROPERTIES

249

A DIAMOND NECKLACE AND BRACELET

The necklace set at the front with a meandering line of navette, brilliant-cut and baguette diamonds supporting a larger diamond drop to a brick link backchain, *42.5 cm long*; the bracelet of similar design, *18.0 cm long*, both *circa 1960* (2)
 €3,000-5,000 US\$3,800-6,300

250

A DIAMOND DOUBLE CLIP BROOCH

Of fluted scroll shape, pavé-set throughout with circular, brilliant-cut and baguette diamonds, *detachable to form two smaller clips*, *circa 1935* (3)
 €2,000-3,000 US\$2,600-3,800

251

A DIAMOND SINGLE STONE RING

Set with a brilliant-cut diamond
 €1,000-2,000 US\$1,300-2,500

252

A PAIR OF CULTURED PEARL AND DIAMOND EARRINGS

Each designed as a baguette and brilliant-cut diamond-set scroll suspending a detachable line of diamonds and a cultured pearl drop, *circa 1960* (2)
 €2,000-3,000 US\$2,600-3,800



244 (part)



253

A PAIR OF GEM SET AND DIAMOND EARRINGS

Each set with a large triangular amethyst within a border of tsavorite garnets and diamonds suspended from diamond set loop links (2)

€3,000-4,000

US\$3,800-5,100



253

254

A COLLECTION OF ANTIQUE JEWELLERY

Comprising: two rings, one set with an oval sardonyx intaglio depicting a playful satyr; the other set with an oval intaglio depicting a roman statue, both circa 1800, and two brooches; one set with a circular-cut amethyst within a border of halfpearls, four larger pearls at the cardinal points, circa 1870; and a bar brooch set with five square-cut amethysts to a frame set with halfpearls and rose-cut diamonds, circa 1900 (4)

€2,000-3,000

US\$2,600-3,800

255

AN AMETHYST AND DIAMOND NECKLACE AND RING, BY MARGHERITA BURGNER

The necklace composed of amethyst beads divided by diamond set spacers to a diamond set sphere clasp; and a ring set with a cabochon amethyst surrounded by brilliant-cut diamonds (2)

Signed Margherita Burgener

€3,000-5,000

US\$3,800-6,300

THE PROPERTY OF A LADY

256

AN AMETHYST AND DIAMOND "BIRD ON A ROCK" BROOCH, BY JEAN SCHLUMBERGER, TIFFANY & CO.

Designed as a pavé-set diamond bird, with a circular-cut ruby eye and gold head feathers, beak, legs and feet, perched on a cushion-shaped amethyst, mounted in 18k gold, in a Tiffany & Co. suede box (2)

Signed Schlumberger for Tiffany & Co., circa 1960

Jean Schlumberger created the original design of the "Bird on a Rock" brooch in the 1960s to hold the Tiffany Diamond, weighing approximately 128.54 carats. The diamond bird holding the cushion-cut fancy yellow diamond is still exhibited at Tiffany & Co.'s Fifth Avenue store in New York Cf. John Loring, *Tiffany's 20th Century: A Portrait of American Style*, Harry N. Abrams, Inc., 1997

€10,000-15,000

US\$13,000-19,000

OTHER PROPERTIES

257

A SAPPHIRE BAND RING

The front composed of multiple bands set with rubies, sapphires, tsavorite garnets, yellow sapphires, black and white diamonds

€1,000-1,500

US\$1,300-1,900

258

A PAIR OF AMETHYST AND JADE EARRINGS

Each octagonal surmount set with an amethyst surrounded by brilliant-cut diamonds, supporting a detachable pear-shaped lavender jade drop within a border of diamonds (2)

€4,000-6,000

US\$5,100-7,600

259

AN AMETHYST BRACELET

Composed of seven rows of amethyst beads divided by diamond set bars and spacers to a diamond set bar clasp, adjustable length

€2,400-2,600

US\$3,100-3,300



256





260

260
A LADY'S ART DECO DIAMOND WRISTWATCH, BY HAMILTON
 With mechanical movement, 17-jewels, cream dial with Arabic numerals, blue steel hands, diamond-set bezel, baguette-cut diamond-set lugs to a similarly-set bracelet, *dial signed, 18.0 on total length*
 Signed Hamilton, case no 2400, circa 1920
 €1,000-1,500 US\$1,300-1,900

THE PROPERTY OF A LADY

261
A DIAMOND NECKLACE
 Composed of hexagonal links set with circular-cut diamonds, six larger diamonds set in flowerhead collets dividing at the front, *43.0 cm long*
 €7,000-9,000 US\$8,900-11,000

OTHER PROPERTIES

262
A PAIR OF NATURAL PEARL AND DIAMOND EARRINGS
 Each earring set with a pear-shaped natural pearl drop suspended from a diamond set surmount (2)
 €8,000-12,000 US\$11,000-15,000

THE PROPERTY OF A LADY

263
A DIAMOND SINGLE STONE RING
 Set with a brilliant-cut diamond weighing 10.41 carats
 €40,000-60,000 US\$51,000-76,000

264
A DIAMOND SINGLE STONE RING
 The brilliant-cut stone weighing 8.13 carats
 €25,000-35,000 US\$32,000-44,000

OTHER PROPERTIES

265
A DIAMOND ETERNITY BAND
 Set with a line of brilliant-cut diamonds, *Ring Size 7*
 €3,500-4,500 US\$4,500-5,700

266
AN ANTIQUE NATURAL PEARL BRACELET
 The bracelet designed as a finely woven band of seedpearls to a diamond set bar clasp, *circa 1900, 19.0 cm long* (2)
Accompanied by a N.E.L. report No. P4793, dated 7 september 2006, stating the pearls to be natural
 €2,000-4,000 US\$2,600-5,100

267
TWO DIAMOND BROOCHES
 A finely pierced Art Deco brooch with spade-shaped terminals, set with circular and rose-cut diamonds, *circa 1925*; and an openwork circular Belle Epoque brooch set with a pearl and circular-cut diamonds, *circa 1915* (2)
 €1,800-2,400 US\$2,300-3,000

END OF SALE



267



267



INDEX

A

Arkarov, Ivan 73

B

Baume & Mercier 119
Boltenstern, Sven 169
Boucheron 124, 219
Breguet 4
Bucherer 117, 189, 196, 203
Bulgari 62, 186, 208

C

Cartier 48, 60, 62, 113-114, 119, 127,
131, 182, 200, 207, 210, 234
Castellani 37
Chanel 118
Chopard 94
Christoffel 209

D

De Grisogono 121

F

Fabergé 12

H

Hamilton 260
Heyman, Oscar 243

J

Jaeger-LeCoultre 122, 174
Janesich 90

K

Khazama 17

L

Lega 107

M

Masenz 40
Meister 203
Margherita Burgener 142, 235
Molinari, Andrea 164, 212
Musashiya 21

N

Neiman Marcus 159

O

Omega 108, 111, 203

P

Pampus, W. van 198
Patek Philippe 110, 112
Piaget 119, 123, 166, 173, 192, 194-195,
197

R

René Lalique 23
Rolex 115-116, 120, 125

S

Salvador Dali 190
Schilling 138, 162
Schlumberger, Tiffany & Co. 236
Seaman Shepps 77

V

Van Cleef & Arpels 109, 199, 201, 204,
213

W

Wartski 63
Wilm 206, 223

EXPLANATION OF CATALOGUING PRACTICE

FOR JEWELLERY

Terms used in this catalogue have the meanings ascribed to them below. Please note that all statements in this catalogue as to Authorship are made subject to the provisions of the CONDITIONS OF SALE.

Jewellers in the Title

1. By Boucheron

When maker's name appears in the title, in Christie's qualified opinion it is by that maker.

Jewellers beneath the description

2. Signed Boucheron

Has signature which in Christie's qualified opinion is authentic.

3. With maker's mark for Boucheron

Has a mark denoting a maker which in Christie's qualified opinion is authentic.

4. By Boucheron

In Christie's qualified opinion the object is by the jeweller although unsigned.

5. Mounted by Boucheron

In Christie's qualified opinion the setting has been created by the jeweller using stones originally supplied by the jeweller's client.

6. Mount only by Boucheron

In Christie's qualified opinion the mounting is by the jeweller, but either the gemstones have been replaced or the piece has been altered in some way after its manufacture.

Periods

1. Antique
Over 100 years old
2. Art Nouveau
1893-1910
3. Belle Epoque
1893-1914
4. Art Deco
1915-1935
5. Retro
1940s

IMPORTANT NOTICES

SYMBOLS USED IN THE CATALOGUE

- Lot offered without reserve. This lot will be sold to the highest bidder regardless of the pre-sale estimate printed in the catalogue.
- ! For each Lot the Buyer's Premium is calculated as 37.05% of the Hammer Price up to a value of € 20,000, plus 31.1% of the Hammer Price between € 20,001 and € 800,000, plus 21.58% of any amount in excess of € 800,000.
- + 19% VAT applies to both the Hammer Price and the Buyer's Premium. The Buyer's Premium is calculated for each lot as 48.75% of the Hammer Price up to a value of € 20,000, plus 42.8% of the Hammer Price between € 20,001 and € 800,000, plus 33.28% of any amount in excess of € 800,000.
- o On occasion, Christie's has a direct financial interest in lots consigned for sale which may include guaranteeing a minimum price or making an advance to the consignor that is secured solely by consigned property.
- Δ This lot is owned in whole or in part by Christie's.

λ ARTIST'S REALE RIGHT REGULATIONS ("DROIT DE SUITE/VOLGREGHT")

If a lot is affected by this right it will be identified with the symbol λ next to the lot number. The buyer agrees to pay to Christie's an amount equal to the resale royalty and we will pay such amount to the artist. Resale royalty applies where the Hammer Price is 3,000 Euro or more and the amount cannot be more than 12,500 Euro per lot. The amount is calculated as follows:

Royalty (in Euro)	For the portion of the Hammer Price
4.00%	up to 50,000
3.00%	between 50,000.01 and 200,000
1.00%	between 200,000.01 and 350,000
0.50%	between 350,000.01 and 500,000
0.25%	in excess of 500,000

IMPORTANT NOTICES

CHRISTIE'S INTEREST IN PROPERTY CONSIGNED FOR AUCTION

From time to time, Christie's may offer a lot which it owns in whole or in part. Such property is identified in the catalogue with the symbol Δ next to its lot number.

On occasion, Christie's has a direct financial interest in lots consigned for sale, which may include guaranteeing a minimum price or making an advance to the consignor that is secured solely by consigned property. Such property is identified in the catalogue with the symbol o next to the lot number. This symbol will be used both in cases where Christie's holds the financial interest on its own, and in cases where Christie's has financed all or part of such interest through third parties.

When a third party agrees to finance all or part of Christie's interest in a lot, it takes on all or part of the risk of the lot not being sold, and will be remunerated in exchange for accepting this risk. The third party may also bid for the lot. Where it does so, and is the successful bidder, the remuneration may be netted against the final purchase price. If the lot is not sold, the third party may incur a loss. Where Christie's has an ownership or financial interest in every lot in the catalogue, Christie's will not designate each lot with a symbol, but will state its interest at the front of the catalogue.

ALL DIMENSIONS ARE APPROXIMATE.

Picture lots are sold framed, unless otherwise stated. Measurements: height precedes width.

CONDITION REPORTS

Christie's catalogues include references to condition only in descriptions of multiple works (such as prints, books and wine). For all other property, only alterations or replacement components are listed. Please contact the Specialist Department for a condition report on a particular lot. Condition reports are provided as a service to interested clients. Prospective Buyers should note that descriptions of property are not warranties and that each lot is sold "as is".

PROPERTY INCORPORATING MATERIALS FROM ENDANGERED SPECIES

An export licence issued by the Department Cites of the Ministry of Agriculture, Nature and Food Quality will be required for the export of any item made of or incorporating (irrespective of percentage) animal material such as ivory, whalebone, tortoiseshell, rhinoceros horn etc., and this may take up to eight weeks to obtain. Clients are advised to check with the regulating body in the country of importation regarding any possible restrictions on the importation of items within this category – some countries have an absolute ban on the importation of certain materials. For example, the U.S. generally prohibits the importation of articles containing species that it has designated as endangered or threatened if those articles are less than 100 years of age.

COLLECTION AND STORAGE CHARGES

To avoid further transport with the risks involved, Buyers are urgently requested to pay and collect their purchases at the place of sale on 29 April 2009 and 1 May - 8 May 2009 from 9.00 a.m. - 5.00 p.m. Please note the Amsterdam office is closed on Thursday 30 April 2009. If instructed by the Buyer, Christie's can arrange for the transport of the acquired works at the Buyer's risk and expense.

In accordance with Christie's Conditions of Sale (Section B.9) printed at the back of this catalogue, the risk of lost or damage to purchased Lots shall be borne by the Buyer from the moment when the Buyer's bid is accepted as the highest bid by Christie's at the auction. This means that Buyers have a legal obligation to pay for their purchases in full in accordance with the conditions of business, even if the Lots are subsequently lost or damaged. Buyers are advised to arrange their own insurance cover as soon as practicable after the sale.

...HOME JAMES!

As an additional service to Buyers, Christie's can arrange delivery for purchased lots via Gerlach Art Packers and Shippers within the Netherlands. The charges per delivery (i.e. one or multiple lots shipped to the same address) are as follows:

Deliveries within postal code areas starting with 10 or 11:
For small items (i.e. those that can be carried by one person): € 75 (incl.VAT) per delivery.
For large items (i.e. those that require two persons): € 140 (incl.VAT) per delivery.

Deliveries to all other areas in the Netherlands:
For small items: € 140 (incl.VAT) per delivery
For large items: € 240 (incl.VAT) per delivery

Full payment of the purchased lots is required before actual delivery can take place.

It is the client's responsibility to ensure that they arrange adequate insurance cover for their property. If required, Gerlach can arrange insurance and will be pleased to provide a quotation on request. For items that need to be hoisted up, please ask for a separate quotation.

Please contact Gerlach at +31 (0)20 611 42 15, if you are interested in the above service, and if you would like to discuss further details such as time of delivery and insurance cover. Deliveries will be within one week after payment of the purchased lots (and transport charges) has been received, in a time slot of 2 hours.

12/7/07

IMPORTANT NOTICES

REGARDING COLOURED STONES

Prospective buyers are reminded that many coloured gemstones have historically been treated to enhance their appearance. Certain enhancement methods, such as heating, are commonly used to improve both colour or transparency, particularly in rubies and sapphires. Other methods, such as oiling, enhance the clarity of emeralds. These methods have been generally accepted by the international jewellery trade. Although heat enhancement of colour is widely believed to be permanent, it may have some impact on the durability of the gemstone and special care of the stone may be required over time. For example, gemstones which have been oiled may require re-oiling after a period of years to retain their maximum appearance.

It is Christie's policy to obtain gemmological reports from internationally recognised gemmological laboratories describing certain gemstones sold by Christie's. The availability of such reports will be disclosed in the catalogue. Reports from American gemmological laboratories used by Christie's will disclose any heat enhancement or treatment. European gemmological laboratory reports will disclose heat enhancement only if specifically requested but will confirm when no heat enhancement or treatment has been made. Because of variations in approach and technology there may not be consensus among laboratories as to whether any particular gemstone has been treated, the extent of treatment and whether treatment is permanent.

It is not feasible for Christie's to obtain a gemmological report for each gemstone offered by Christie's. Prospective buyers should be aware that all gemstones may have been enhanced by some method. For further details, prospective buyers in the United States are referred to the information chart prepared by the Gemstones Standards Commission, available in the viewing area. Prospective buyers may request laboratory reports for any uncertified item if requests are made at least three weeks before the scheduled date of auction. This service is subject to prepayment by the requesting party.

Because enhancement affects market value, Christie's estimates will reflect the information disclosed in a report or, if no report is available, the assumption that gemstones may have been enhanced.

Condition reports are usually available for all lots upon request and Christie's specialists will be happy to answer any questions.

TO PROSPECTIVE BUYERS OF CLOCKS AND WATCHES

The description of the condition of clocks and watches in this catalogue, including references to defects and repairs, is provided as a service to prospective buyers, but such description is not necessarily complete. While Christie's will furnish a condition report on any lot to a prospective purchaser upon request, any such report may also be incomplete and may not specify all mechanical replacements or defects. Accordingly, all clocks and watches should be viewed personally by prospective buyers to evaluate the condition of the property offered for sale. All lots are sold "as is," and the absence of any reference to the condition of a clock or watch does not imply that the lot is in good condition and without defects, repairs or restorations. Virtually all clocks and watches have been repaired in the course of their normal useful lifetime and may now incorporate parts not original to them. Furthermore, Christie's makes no representation or warranty that any clock or watch is in working order.

REGARDING THE SALE OF MATERIAL FROM ENDANGERED SPECIES

Prospective purchasers are advised that several countries prohibit the importation of property containing materials from endangered species, including but not limited to coral, ivory and tortoiseshell. Accordingly, prospective purchasers should familiarize themselves with relevant customs regulations prior to bidding if they intend to import this lot into another country. In this catalogue, such jewellery has been marked with two asterisks (***) as a reminder.

REGARDING ESTIMATED WEIGHTS

Certain weights in the catalogue have been estimated through measurement. These figures are to be used as approximate guidelines and should not be relied upon as exact.

REGARDING IMPORTATION OF WATCHES INTO THE US

Prospective buyers should be aware the the importation of Rolex watches into the United States is highly restricted. These watches may not be shipped into the USA and can only be imported personally. Generally, a buyer may import only one watch into the USA. In this catalogue, these watches have been marked with a ⚡.

It is the buyer's responsibility to determine whether there are any import restrictions and to comply with such restrictions. The failure by Christie's to mark a lot with a ⚡ shall not constitute grounds to rescind or cancel a sale. For further information please contact our specialists in charge of the sale.

NOTICE REGARDING BURMESE STONES

Items which are made of, or contain, rubies or jadeite originating in Burma (Myanmar) may not be imported into the U.S. As a convenience to our bidders, lots which contain rubies or jadeite of Burmese origin or of indeterminate origin have been marked with ⚡. Please be advised that a purchaser's inability to import any such item into the U.S. or any other country shall not constitute grounds for nonpayment or cancellation of the sale.

Please note that with respect to items that contain any other types of gemstones originating in Burma (e.g., sapphires), such items may be imported into the U.S., provided that the gemstones have been mounted or incorporated into jewelry outside of Burma and provided that the setting is not of a temporary nature (e.g., a string).

BUYING AT CHRISTIE'S

CONDITIONS OF SALE

Christie's Conditions of Sale and limited warranty are set out later in this catalogue. Bidders are strongly encouraged to read these as they set out the terms on which property is bought at auction.

ESTIMATES

Estimates are based upon prices recently paid at auction for comparable property, condition, rarity, quality and provenance. Estimates are subject to revision. Buyers should not rely upon estimates as a representation or prediction of actual selling prices. Estimates do not include the buyer's premium or VAT. Where "Estimate on Request" appears, please contact the Specialist Department for further information.

RESERVES

The reserve is the confidential minimum price the consignor will accept and will not exceed the low pre-sale estimate. Lots that are not subject to a reserve are identified by the symbol * next to the lot number.

BUYER'S PREMIUM

Christie's charges a premium to the buyer on the Hammer Price of each lot sold at the following rates: 29.75% of the Hammer Price of each lot up to and including € 20,000, plus 23.8% of the Hammer Price between € 20,001 and € 800,000, plus 14.28% of any amount in excess of € 800,000. Buyer's premium is calculated on the basis of each lot individually.

PRE-AUCTION VIEWING

Pre-auction viewings are open to the public free of charge. Christie's specialists are available to give advice and condition reports at viewings or by appointment.

BIDDER REGISTRATION

Prospective buyers should register for a numbered bidding paddle at least 30 minutes before the auction. New clients, or those who have not made a recent purchase at Christie's, may be asked to supply a bank reference to register.

BIDDING

The auctioneer accepts bids from those present in the saleroom, from telephone bidders, or by absentee written bids left with Christie's in advance of the auction. The auctioneer may also execute bids on behalf of the seller up to the amount of the reserve. The auctioneer will not specifically identify bids placed on behalf of the seller. Under no circumstances will the auctioneer place any bid on behalf of the seller at or above the reserve. Bid steps are shown on the Absentee Bids Form at the back of this catalogue.

ABSENTEE BIDS

Absentee bids are written instructions from prospective buyers directing Christie's to bid on their behalf up to a maximum amount specified for each lot. Christie's staff will attempt to execute an absentee bid at the lowest possible price taking into account the reserve price. Absentee bids submitted on "no reserve" lots will, in the absence of a higher bid, be executed at approximately 50% of the low pre-sale estimate or at the amount of the bid if it is less than 50% of the low pre-sale estimate. The auctioneer may execute absentee bids directly from the rostrum, clearly identifying these as "absentee bids", "book bids", "order bids" or "commission bids". Absentee Bids Forms are available in this catalogue, at any Christie's location, or online at christies.com.

Absentee bids must be received at least 24 hours before the auction begins.

TELEPHONE BIDS

Telephone bids cannot be accepted for lots estimated below €2,200. Arrangements must be confirmed with the Bid Department at least 24 hours prior to the auction at +31 (0)20 575 59 50. Arrangements to bid in languages other than Dutch and English must be made well in advance of the sale date. Telephone bids may be recorded. By

bidding on the telephone, prospective purchasers consent to the recording of their conversation.

SUCCESSFUL BIDS

The fall of the auctioneer's hammer indicates the final bid, at which time, the buyer assumes full responsibility for the lot. The results of absentee bids will be mailed after the auction. Successful bidders will pay the price of the final bid plus premium plus any applicable VAT.

PAYMENT

Buyers are expected to pay for purchases immediately after the auction. Payment can be made in cash, cheque, or by bank transfer in Euros to Christie's Stichting Dordengelden: ABNAMRO Bank (BIC/SWIFT code ABNANL2A), Apollolaan 171, 1077 AS Amsterdam. Account No. 54.76.17.100; IBAN: NL79ABNA0547617100. By credit card in person at our cashier's counter (telephone or mail transactions are not possible); Eurocard Mastercard, VISA, American Express (please note a surcharge will apply).

It is Christie's Company policy not to accept single or multiple payments in cash or cash equivalents of more than €7,500 or the equivalent value in another currency. As of 1 January 2002, all cash payments made at Christie's Amsterdam will require formal identification. If you are active as a private person, this identification may be a valid passport, European identity card or driving license. If you act on behalf of one or more other persons, identification, as above is required for this or those person(s) in addition to your personal identification. If you act on behalf of a company, please bring an original extract of the registration with the Chamber of Commerce (not older than three months) of your company in addition to your personal identification.

Source: Dutch Law Mention Unusual Transactions and Dutch Law Identification Service rendering. Cheques and drafts should be made payable to Christie's Amsterdam B.V. Only Certified Bank Cheques i.e. those cheques that are drawn on the bank, can be accepted as form of payment in cases of immediate collection. Identification as above is required and the limit of €7,500 applies. For further information call the Cashier at +31 (0)20 575 52 11. Please note that Christie's will not accept payments for purchased Lots from any party other than the buyer, unless otherwise agreed between the buyer and Christie's prior to the sale.

LOCAL TAXES AND VAT

If a Lot is marked "+*" or "!", it will have a special VAT status and will be subject to higher rates as follows:

! : Lot is imported from outside the EU. For each Lot the Buyer's Premium is calculated as 37.05% of the Hammer Price up to a value of € 20,000, plus 31.1% of the Hammer Price between € 20,001 and € 800,000, plus 21.58% of any amount in excess of € 800,000.

+ : 10% VAT applies to both the Hammer Price and the Buyer's Premium. The Buyer's Premium is calculated for each lot as 48.75% of the Hammer Price up to a value of € 20,000, plus 42.8% of the Hammer Price between € 20,001 and € 800,000, plus 33.28% of any amount in excess of € 800,000.

VAT

REFUNDS FOR BUYERS OUTSIDE THE EU VAT charged on both the Hammer Price and the Premium may be refunded provided the following conditions are met:

- Property must be exported from the EU within 2 months of the date of the sale.
- Christie's must be provided with proof of export bearing the original customs stamp from the point of export from the EU. Netherlands tax authorities will not accept photocopies.

- The purchase invoice must be addressed to a party resident outside of the EU.

Christie's remains liable to account for VAT on all Lots unless the conditions listed above are satisfied.

Therefore Buyers will generally be asked to initially deposit all amounts of VAT invoiced. To apply for a refund the appropriate export evidence must be sent to Christie's accounts department clearly marked 'VAT REFUND'. There will be an administration charge of € 35 payable to Christie's for this service.

An immediate refund of VAT is possible if shipping is arranged by Christie's within 2 months of the date of the sale.

SHIPPING

A shipping form is enclosed with each invoice to buyers outside of the Netherlands. It is the buyer's responsibility to pick up purchases or make all shipping arrangements. After payment has been made in full, Christie's can arrange property packing and shipping at the buyer's request and expense. Buyers should request an estimate for any large items or property of high value that require professional packing. For more information please contact the Shipping Department at +31 (0)20 575 52 52.

INSURANCE AND STORAGE

Buyers are advised to arrange their own insurance cover as soon as practicable after the sale. Please note that (subject to availability of space at our premises) all uncollected purchases may be transferred to third party storage at your expense if you fail to arrange timely collection or to issue instructions for shipping.

VAT

BUYERS FROM WITHIN THE EU

Buyers who are resident outside The Netherlands, but within the EU, and who have obtained a valid VAT identification number that has been made known to Christie's before or immediately after the sale, and who furthermore comply with all other conditions specified by Christie's, will be eligible for a VAT rate of 0%. The buyer guarantees to Christie's the correctness of all information provided. Lots that are sold in accordance with the above, shall be ineligible to be resold under the Margin Scheme.

EXPORT/IMPORT PERMIT

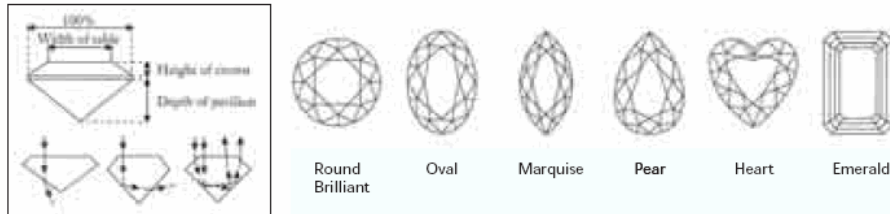
Overseas buyers are advised to familiarise themselves with any restrictions or licence requirements relating to their intended purchases. In case of doubt, buyers are advised to consult their local customs authority or a reputable international shipper.

Export licences in the Netherlands can usually be obtained within two to four weeks. Sellers and Buyers are advised that the Ministry of Education, Culture and Sciences may designate cultural objects as 'protected cultural objects', in which case restrictions with regard to the exportation and transfer of title of these objects apply. Sellers and Buyers are further advised that certain objects may fall within the scope of EU-regulation no 3911/92, as a consequence of which an export licence from the Ministry of Education, Culture and Sciences may be required if the objects are to be exported to a country outside of the EU.

An export licence issued by the Ministry of Agriculture, Nature and Food Quality, Department CITES will be required for the export of any item made of, or incorporating (irrespective of percentage) animal material such as ivory, whalebone, tortoiseshell, rhinoceros horn etc. and this generally takes up to 8 weeks. Clients are advised to check with the regulating body in the country of importation regarding items within this category - some countries have an absolute ban on the importation of certain materials.

DIAMONDS • THE 4 C'S

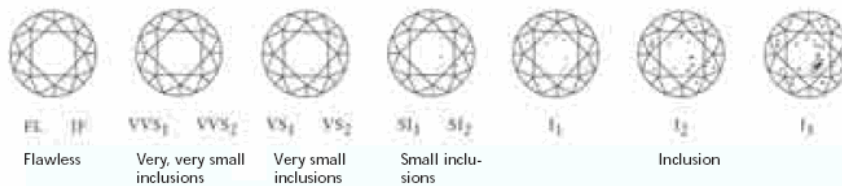
Cut



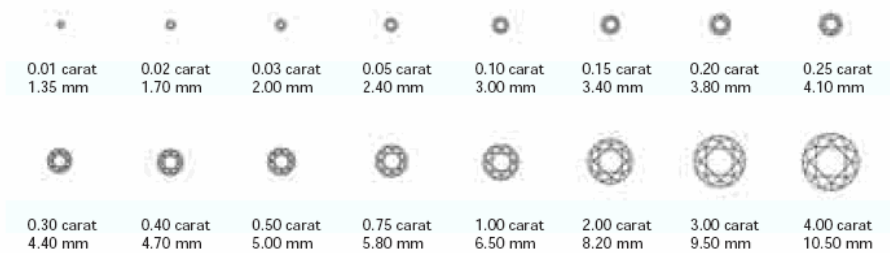
Colour (G.I.A.)



Clarity (G.I.A.)



Carat



Courtesy of Jewellers Network, the Southern African Jewellery Trade Directory, from information supplied by De Beers.
www.jewellersnetwork.co.za

CONVERSION CHART

RING SIZE

AMERICAN	FRENCH/JAPANESE	ENGLISH	METRIC
½	—	A	37.8252
1	—	A½	38.4237
1	—	B	39.0222
1¼	—	B½	39.6207
1½	—	C	40.2192
1¾	—	C½	40.8177
2	1	D	41.4162
2¼	2	D½	42.0147
2½	—	E	42.6132
2¾	3	E½	43.2117
3	4	F	43.8102
3¼	—	F½	44.4087
3½	5	G	45.0072
3¾	—	G½	45.6057
4	6	H	46.2042
4¼	—	H½	46.8027
4½	7	I	47.4012
4¾	8	I½	47.9997
5	—	J	48.5982
5¼	9	J½	49.1967
5½	10	K	49.7952
5¾	—	K½	50.3937
6	11	L	50.9922
6¼	—	L½	51.5907
6½	12	M	52.1892
6¾	13	M½	52.7877
7	—	N	53.3862
7¼	14	N½	54.1044
7½	15	O	54.7428
7¾	—	O½	55.3812
8	16	P	56.0196
8¼	—	P½	56.6580
8½	17	Q	57.2964
8¾	18	Q½	57.9348
9	—	R	58.5732
9¼	19	R½	59.2116
9½	20	S	59.8500
9¾	—	S½	60.4884
10	21	T	61.1268
10¼	22	T½	61.7652
10½	—	U	62.4036
10¾	23	U½	63.0420
11	24	V	63.6804
11¼	—	V½	64.3188
11½	25	W	64.8774
11¾	—	W½	65.4759
12	26	X	66.0744
12¼	—	X½	66.6729
12½	—	Y	67.2714
12¾	—	Y½	67.8699
13	—	Z	68.4684

MEASUREMENTS

INCHES	CM
—	—
—	1
—	2
1	3
—	4
2	5
—	6
3	7
—	8
—	9
4	10
—	11
—	12
5	13
—	14
6	15
—	16
—	17
7	18

CONDITIONS OF SALE

The following Conditions of Sale apply to the legal relationship between Christie's Amsterdam B.V. (hereinafter: "Christie's") and the participants in the auctions held by Christie's and related activities. By participating in the auction, the persons who bid at the auctions held by Christie's (hereinafter: "Intending Buyer(s)") accept the applicability of these Conditions of Sale. Christie's therefore request Intending Buyers to read carefully both the Conditions of Sale and the definitions of some of the terms used in the catalogue.

For ease of reference, the Conditions of Sale are divided into sections: Section A gives a background to some of the terms used in the Conditions generally; section B to (Intending) Buyers; and section C contains some general provisions.

(A) BACKGROUND TO TERMS USED IN THESE CONDITIONS

1. In the conditions set out below, some terms are used regularly that need explanation. They are as follows:

- The "Buyer" means the person with the highest bid accepted by the auctioneer, assuming this highest bid is at least equal to the Reserve, if any;
- The "Buyer's premium" means the charge payable by the Buyer as a percentage of the Hammer Price, at the rates set out in Article B.4.;
- "Condition report" means additional information on a particular lot in the catalogue, as supplied by Christie's;
- The "Consignment Agreement" means the written agreement between Christie's and the Seller containing the instruction from the Seller to Christie's to sell the Lots during one or several auctions;
- "Forgery" means a Lot constituting an imitation originally conceived and executed as a whole with a fraudulent intention to deceive as to authorship, origin, age, period, culture or source where the correct description as to such matters is not reflected by the description in the catalogue and which at the date of the auction had a value materially less than it would have had if it had been in accordance with the description in the catalogue. Accordingly, no Lot shall be capable of being a Forgery by reason of any damage and/or restoration work of any kind (including repainting);
- The "Hammer Price" means the amount of the highest bid accepted by the auctioneer in relation to a Lot;
- "Margin Scheme" means that the Buyer's Premium includes VAT as set out in Article B.4;
- "Lot" means any object or set of objects accepted by Christie's for the purpose of selling the same at the auction and described in the catalogue under one lot number;
- "Proceeds of Sale" means the Hammer Price less the commission and V.A.T. chargeable thereon and less all costs payable to Christie's;
- "Purchase Price" means the Hammer Price plus the Buyer's premium and all other costs payable to Christie's (including the resale royalty) plus any applicable VAT;
- The "Reserve" means the amount below which Christie's agree with the Seller that the Lot cannot be sold;
- The "Seller" means the person offering an object or a set of objects to Christie's for sale at one of the auctions held by Christie's;

(B) THE BUYER

1. THE BUYER

- (a) The Buyer is the person accepted as the highest bidder by Christie's acting as agent for the Seller. The decision whether or not to accept a bid shall be made by Christie's. The purchase agreement between the Seller and the Buyer comes into being at the moment when Christie's accept a bid as the highest bid.
- (b) When making a bid, a bidder is accepting personal liability to pay the purchase price, including buyer's premium and all applicable taxes, plus all other applicable charges, unless it has been explicitly agreed in writing with Christie's before the commencement of the sale that the bidder is acting as agent on behalf of an identified third party acceptable to Christie's, and that Christie's will only look to the principal for payment.
- (c) Anyone wishing to bid at an auction must fill out and sign a registration form before the beginning of the auction.

2. CHRISTIE'S ACTING AS REPRESENTATIVES

- (a) In effecting sales Christie's are acting as representatives for the Seller. Christie's do not warrant to the Intending Buyers that the Sellers have the right of disposal of the objects sent in, nor that the objects are not charged with real rights or leased out, nor that all legal requirements relating to any export or import of the objects have been complied with.
- (b) Christie's are not obliged to disclose the name of the Seller to the Intending Buyer or the Buyer.
- (c) Christie's recommend Intending Buyers to attend the auction and to make bids themselves.
- (d) If an Intending Buyer gives Christie's instructions to bid on his behalf, by using the form printed after the catalogue entries, Christie's shall - without charging any additional fee - use reasonable efforts to do so, provided the instructions are received not later than 24 hours before the auction. If Christie's receive commission bids on a particular Lot for identical amounts, and at auction these bids are the highest bids for the Lot, it will be sold to the person whose bid was received first. Commission bids are accepted by Christie's subject to other commitments at the time of the sale, and the conduct of the sale may be such that Christie's are unable to bid as requested. Christie's do not accept liability whatsoever for failure to make a commission bid or for failure to correctly execute a commission bid. Intending Buyers should therefore always attend personally if they wish to be certain of bidding.
- (e) If an Intending Buyer makes arrangements with Christie's not later than 24 hours before the auction, Christie's shall - without charging any additional fee - use reasonable efforts to contact the Intending Buyer to enable him to participate in bidding by telephone. Christie's does not accept liability whatsoever for failure to make a telephone bid or for failure to correctly execute a telephone bid.

3. DESCRIPTIONS IN THE CATALOGUE AND VIDEO IMAGES

- (a) All statements of Christie's in the catalogue and condition reports as to the (presumptive) designer, author, writer, origin, date, age, genuineness, source,

provenance, condition or estimated Hammer Price of any Lot are statements of opinion only and shall never imply any guarantee by Christie's. All illustrations in the catalogue serve merely as guidance for Intending Buyers; they do not provide any decisive information as to pattern, colours and degree of damage of any Lot.

- (b) Lots may be in imperfect condition. The absence of any reference in the catalogue to defects in a Lot does not imply that such Lot is free from defects, nor does reference to particular defects imply the absence of others.
- (c) Intending Buyers will have to form an opinion regarding the matters discussed in paragraph (a) and paragraph (b) above by personal inspection or otherwise during the previews.
- (d) Without prejudice to the provisions in paragraph (a) and paragraph (b) above, neither Christie's nor their employees or representatives give any guarantee as to the correctness or completeness of any information supplied either verbally or in writing about any Lot.
- (e) If within one year after the auction the Buyer proves that a Lot bought by him is a Forgery, the sale of the Lot shall be cancelled and the Purchase Price shall be refunded by Christie's to the Buyer. The Buyer should note that this refund can be obtained only if the following conditions are met:
 - (i) the Buyer has notified Christie's in writing within one year from the date of the auction that in his view the Lot is a Forgery;
 - (ii) the Buyer has within fourteen days after the date of the notification referred to hereabove under (i) returned the Lot to Christie's in the same condition as it were in when the Buyer took delivery of the Lot; and
 - (iii) the Buyer has at latest upon return of the Lot produced evidence satisfactory to Christie's that the Lot is a Forgery and that he is able to transfer the title to Christie's, free from any third party claims.

The right to a refund as contained in this paragraph shall not exist if either (a) the catalogue description at the auction date corresponded to the generally accepted opinion of scholars or experts at that time, or fairly indicated that there was a conflict of opinions; or (b) it can be demonstrated that a Lot is a Forgery only by means of either a scientific process not generally accepted for use until after publication of the catalogue or a process which at the date of the auction was unreasonably expensive or impracticable or likely to have caused damage to the Lot.

In no circumstance shall Christie's be obliged to pay the Buyer any more than the Purchase Price for the Lot. The Buyer shall have no claim for interest. Christie's shall be entitled to rely on any scientific or other process to establish that the Lot is not a Forgery, whether or not such process was used or in use at the date of the auction.

The right to a refund as contained in this paragraph is not capable of being transferred and is solely for the benefit of the Buyer.

The right to a refund as contained in this paragraph does not apply to coins, medals and jewellery.

(f) At some auctions there will be a video screen. Mistakes may occur in its operation, and Christie's shall not be liable to the Intending Buyer regarding either the correspondence of the image to the Lot being sold or the quality of the image as a reproduction of the original.

5/2/07

4. STANDARD CHARGES FOR PURCHASERS

(a) Buyer's Premium

Christie's charges a Buyer's Premium calculated at 29.75% of the Hammer Price for each lot up to and including € 20,000, plus 23.8% of the Hammer Price between € 20,001 and € 800,000, plus 14.28% of any amount in excess of € 800,000. Buyer's premium is calculated on the basis of each lot individually.

The Buyer's Premium does not include shipping or storage charges. These will be charged separately if shipping or storage is requested by the Buyer.

(b) Artist's Resale Right Regulations ("Droit de Suite/Volgrecht"):

If the Artist's Resale Right Regulations apply to the lot the buyer also agrees to pay to us an amount equal to the resale royalty provided for in those Regulations and we undertake to the buyer to pay such amount to the artist. Lots affected are identified with the symbol λ next to the lot number.

5. V.A.T.

If a Lot is not marked "+" or "!" in the catalogue, Christie's will offer such Lot for sale under the Margin Scheme.

If a Lot is marked "+" or "!", it will have a special V.A.T. status and will be subject to higher rates as follows:

"!": Lot is imported from outside the EU. For each Lot the Buyer's Premium is calculated as 37.05% of the Hammer Price up to a value of € 20,000, plus 31.1% of the Hammer Price between € 20,001 and € 800,000, plus 21.58% of any amount in excess of € 800,000.

"+": 19% VAT applies to both the Hammer Price and the Buyer's Premium. The Buyer's Premium is calculated for each lot as 48.75% of the Hammer Price up to a value of € 20,000, plus 42.8% of the Hammer Price between € 20,001 and € 800,000, plus 33.28% of any amount in excess of € 800,000. The Buyer must furnish Christie's with all relevant information concerning his V.A.T. position. The Buyer warrants this information to be correct. Changes in the V.A.T. status of a Lot may be communicated by a sale room notice.

6. REGISTRATION OF BIDDERS

Before the commencement of the bidding, each Intending Buyer must state his name and permanent address to Christie's and also his bank or other suitable references if Christie's so request. Christie's may demand that Intending Buyers show valid proof of identity.

7. PAYMENT

The Buyer shall pay the Purchase Price to Christie's within seven days after the auction, failing which he shall be in default. The Buyer shall owe interest on the Purchase Price to Christie's at a rate equal to the legal interest plus two percentage points from the moment he is in default. The Purchase Price includes V.A.T. The Buyer shall pay the Purchase Price in full even if a subsequent V.A.T. refund may be granted.

8. RELEASE OF LOTS

(a) Without prejudice to the provision of article B.2.(a), the title to the objects belonging to the Lot shall not pass to the Buyer until he has fully paid the Purchase Price as well as any and all other moneys due from the Buyer to Christie's as a result of any other purchase agreements. Until such time, Christie's shall have a lien ("retentierecht") on the objects belonging to the Lot.

(b) The Buyer must take away the Lot(s) purchased by him at his expense within seven days of the auction, failing which he shall be in default. The period of seven days mentioned here may be deviated from in the auction catalogue.

(c) The Buyer shall be liable for the costs of removal, storage or other costs of any Lot which has not been taken away by him within the period referred to in paragraph (b) above. Christie's shall have a lien ("retentierecht") on the Lot in respect of said costs.

(d) The Buyer may request Christie's to pack a purchased Lot or to cause the same to be packed. Such packing shall be done entirely at the discretion of Christie's and at the expense and risk of the Buyer.

(e) Christie's does not provide a packing, postal or delivery service. Christie's can suggest the names of companies that provide these services if requested to do so. However Christie's does not accept responsibility for any loss or damage which may occur during packing, storage or transportation of the Lot(s).

9. RISK OF PURCHASED LOTS

The risk of loss or damage to purchased Lots shall be borne by the Buyer from the moment when the Buyer's bid is accepted as the highest bid by Christie's at the auction. This means that Buyers have a legal obligation to pay their purchases in full, even if the Lots are subsequently lost or damaged.

10. DEFAULT OF THE BUYER

(a) If the Buyer is in default, Christie's shall be authorised to sell the Lot(s) purchased by the Buyer without further notice, either by private or by public sale. The Buyer shall continue to be liable for the part of the Purchase Price remaining unpaid after such sale, while the Buyer shall never be entitled to any surplus proceeds which may be realized upon re-auctioning.

(b) If, as a result of the Buyer's default, Christie's are sued by the Seller or by third parties or if any property belonging to Christie's or the sold Lot(s) is/are seized by the Seller or by third parties, or if Christie's suffer damage or incur expenses in any other way as a result of the Buyer's default, Christie's shall be entitled to recover from the Buyer all damage suffered and expenses incurred by Christie's as a result thereof. Christie's shall moreover be authorized to disclose the identity of the Buyer to the Seller or to the said third parties if the Buyer is in default.

(c) If the Buyer is in default, Christie's may reject at any future auction any bids made by the Buyer.

11. LIABILITY

(a) Without prejudice to the provisions set forth elsewhere in these Conditions of Sale, Christie's are liable for damage suffered by the Buyer only, if the occurrence of the damage is the consequence of gross negligence or intent of Christie's or their employees or representatives.

(b) In the cases referred to in paragraph (a) above the extent of the liability of Christie's for damage suffered by the Buyer shall be limited to the amount of the Buyer's premium.

(c) The limitation of liability as contained in this article may also be invoked by the employees and representatives of Christie's.

12. EXPIRATION

(a) The right of the Buyer to annul, rescind or cancel the purchase agreement or to cause same to be annulled or rescinded shall expire after one year from the day on which the purchase agreement is concluded. If the Buyer decides to exercise any of the rights set forth above, he shall be obliged to deliver the objects belonging to the purchased Lot to Christie's forthwith, in the same condition that they were in when the Buyer took delivery of them, without prejudice to the provisions of Article B.3.(e) in case the Lot is claimed to be a Forgery.

(b) The annulment, nullification, rescission or cancellation of the purchase agreement shall not affect the Buyer's obligation to pay the Buyer's premium and to reimburse the expenses incurred by Christie's.

C. GENERAL PROVISIONS (APPLICABLE TO BOTH BUYERS AND SELLERS)

1. Neither Christie's nor their employees nor their representatives are liable for any damage suffered by the Seller or the Buyer, as the case may be, as a result of default of the Buyer or the Seller, respectively.

2. Christie's are authorised, without reason given, to refuse any person admission to the auction premises and the auction, and also to exclude any person from making bids for a Lot.

3. Christie's are authorised to combine several Lots, to combine different objects from one and the same Seller into one Lot, to refuse any bid, to continue the bidding, to withdraw or to divide a Lot, and in the event of a dispute about the bidding to put up the Lot for sale once again immediately.

4. All notifications and communications to Christie's shall be made in writing.

5. The legal relationship between Christie's and the Buyer shall be governed by Netherlands law.

6. Any dispute between Christie's and the Buyer shall be adjudicated by the competent court of Amsterdam, on the understanding that a Buyer who is a natural person and who is not acting in pursuance of a profession or a sale shall have the right, within a period of 32 days after Christie's have invoked this clause against him in writing, to choose to have the dispute adjudicated by the court that has jurisdiction by law.

7. This text is a translation in the English language of the Dutch Conditions of Sale. The Dutch text shall be the authentic text in all cases. A copy of the Dutch text is on public display at our sale premises and is available on request.

8. The copyright in all images, illustrations and written material, relating to a Lot is and shall remain at all times the property of Christie's and shall not be used by the Buyer nor anyone else without the prior written consent of Christie's.

12/7/07

77

WORLDWIDE SALEROOMS AND EUROPEAN OFFICES

AUSTRIA

VIENNA
+43 (0)1 533 8812
Angela Baillou

BELGIUM

BRUSSELS
+32 (0)2 512 88 30
Roland de Lathuy

FINLAND AND THE BAL TIC STATES

HELSINKI
+358 (0)9 608 212
Barbro Schauman
(Consultant)

FRANCE

• PARIS
+33 (0)1 40 76 85 85

GERMANY

DÜSSELDORF
+49 (0)21 14 91 59 30
Andreas Rumbler

FRANKFURT

+49 (0)61 74 20 94 85
Anja Schaller

HAMBURG

+49 (0)40 27 94 073
Christiane Gräfin zu

Rantzau

MUNICH

+49 (0)89 24 20 96 80
Marie Christine Gräfin
Huyn

STUTTGART

+49 (0)71 12 26 96 99
Eva Susanne Schweizer

ISRAEL

TEL AVIV
+972 (0)3 695 0695
Roni Gilat-Baharaff

ITALY

• MILAN
+39 02 303 2831
ROME
+39 06 686 3333

JAPAN

TOKYO
+81 (0)3 3571 0668
Kanae Ishibashi

MONACO

+377 97 97 11 00
Nancy Dotta
(Consultant)

THE NETHERLANDS

• AMSTERDAM
+31 (0)20 57 55 255

PEOPLES REPUBLIC OF CHINA

• HONG KONG
+852 2521 5396

RUSSIA

MOSCOW
+7 495 937 6364
+44 20 7389 2318
Anastasia Volobueva

SPAIN

BARCELONA
+34 (0)93 487 8259
Cuca Escoda
MADRID
+34 (0)91 532 6626
Juan Varez
Dalia Padilla

SWITZERLAND

• GENEVA
+41 (0)22 319 1766
Eveline de Proyart
• ZURICH
+41 (0)44 268 1010
Dr. Dirk Boll

TURKEY

ISTANBUL
+90 (0)532 582 4895
Zeynep Kayhan
(Consultant)

UNITED ARAB EMIRATES

• DUBAI
+971 (0)4 425 5647
Chaden Khoury

UNITED KINGDOM

• LONDON
+44 (0)20 7839 9060
LONDON,
• SOUTH KENSINGTON
+44 (0)20 7930 6074
SOUTH
+44 (0)845 900 1766
Mark Wrey
NORTH
+44 (0)845 900 1766
Thomas Scott

EAST

+44 (0)845 900 1766

Simon Reynolds

NORTHWEST AND

WALES

+44 (0)845 900 1766

Mark Newstead

Jane Blood

SCOTLAND

+44 (0)131 225 4756

Bernard Williams

Robert Lagneau

Grant MacDougall

David Bowes-Lyon

(Consultant)

ISLE OF MAN

+44 1624 814502

The Marchioness

Conyngham

(Consultant)

CHANNEL ISLANDS

+44 (0)1534 485 988

Melissa Bonn

IRELAND

+353 (0)59 86 24996

Christine Ryall

UNITED STATES

LOS ANGELES

+1 310 385 2600

• NEW YORK

+1 212 636 2000

• DENOTES SALEROOM ENQUIRIES— Call the Saleroom or Office
For a complete salerooms & offices listing go to christies.com

EMAIL— info@christies.com

27/02/09

CHRISTIE'S SPECIALIST DEPARTMENTS AND SERVICES

DEPARTMENTS

20TH CENTURY DECORATIVE ARTS
AMS: +31 (0)20 575 52 67

AMERICAN FURNITURE
NY: +1 212 636 2230

AMERICAN INDIAN ART
NY: +1 212 606 0536

AMERICAN PICTURES
NY: +1 212 636 2140

ANGLO-INDIAN ART
KS: +44 (0)20 7389 2570

ANTIQUITIES
SK: +44 (0)20 7752 3018

ARMS AND ARMOUR
KS: +44 (0)20 7389 2020

AUSTRALIAN PICTURES
KS: +44 (0)20 7389 2040

BOOKS AND MANUSCRIPTS
KS: +44 (0)20 7389 2158
SK: +44 (0)20 7752 3203

BRITISH & IRISH ART
KS: +44 (0)20 7389 2682
NY: +1 212 636 2084
SK: +44 (0)20 7752 3257

BRITISH ART ON PAPER
KS: +44 (0)20 7389 2278
SK: +44 (0)20 7752 3293
NY: +1 212 606 0565

BRITISH PICTURES 1500-1850
KS: +44 (0)20 7389 2945

CAMERAS AND OPTICAL TOYS
SK: +44 (0)20 7752 3279

CARPETS
AMS: +31 (0)20 575 52 22

CHINESE WORKS OF ART
AMS: +31 (0)20 575 52 05

CLOCKS
AMS: +31 (0)20 575 52 22

CONTEMPORARY ART
AMS: +31 (0)20 575 52 82
KS: +44 (0)20 7389 2920
SK: +44 (0)20 7752 3313

CORKSCREWS
SK: +44 (0)20 7752 3263

COSTUME, TEXTILES AND FANS
SK: +44 (0)20 7752 3215

DOLLS
SK: +44 (0)20 7752 3276

EUROPEAN CERAMICS AND GLASS
SK: +44 (0)20 7752 3026

FURNITURE
AMS: +31 (0)20 575 52 22

HOUSE SALES

AMS: +31 (0)20 575 59 75
SK: +44 (0)20 7752 3260

ICONS
SK: +44 (0)20 7752 3261

IMPRESSIONIST AND NINETEENTH CENTURY PICTURES
AMS: +31 (0)20 575 52 82
KS: +44 (0)20 7389 2452
SK: +44 (0)20 7752 3253

INDIAN CONTEMPORARY ART
KS: +44 (0)20 7389 2409

INDIAN, HIMALAYAN, SOUTHEAST ASIAN
AMS: +31 (0)20 575 52 20

INTERIORS
SK: +44 (0)20 7389 2236
NY: +1 212 636 2032

ISLAMIC WORKS OF ART
KS: +44 (0)20 7389 2370
SK: +44 (0)20 7752 3239

JAPANESE WORKS OF ART
AMS: +31 (0)20 575 52 05

JEWELLERY
AMS: +31 (0)20 575 59 15

JUDAICA & HEBRAICA
AMS: +31 (0)20 575 52 19

LATIN AMERICAN ART
NY: +1 212 636 2150

MARITIME MODELS, INSTRUMENTS AND EPHEMERA
SK: +44 (0)20 7752 3119

MARITIME PICTURES
AMS: +31 (0)20 575 52 80
SK: +44 (0)20 7752 3284
NY: +1 212 707 5949

MECHANICAL MUSIC
SK: +44 (0)20 7752 3278

MINIATURES
KS: +44 (0)20 7389 2347
SK: +44 (0)20 7752 3177

MODERN DESIGN
AMS: +31 (0)20 575 52 67
SK: +44 (0)20 7389 2142

MOTOR CARS
KS: +44 (0)20 7389 2851

MUSICAL INSTRUMENTS
SK: +44 (0)20 7752 3305

NINETEENTH CENTURY EUROPEAN ART
AMS: +31 (0)20 575 52 80

NINETEENTH CENTURY FURNITURE AND SCULPTURE
KS: +44 (0)20 7389 2144

OBJECTS OF VERTU

AMS: +31 (0)20 575 52 17
KS: +44 (0)20 7389 2666
SK: +44 (0)20 7752 3001

OLD MASTER DRAWINGS
KS: +44 (0)20 7389 2251

OLD MASTER PICTURES
AMS: +31 (0)20 575 59 58

ORIENTAL CERAMICS AND WORKS OF ART
SK: +44 (0)20 7752 3235

PHOTOGRAPHS
SK: +44 (0)20 7389 2292

PICTURE FRAMES
SK: +44 (0)20 7389 2763

POPULAR ENTERTAINMENT
SK: +44 (0)20 7752 3275

POST WAR ART
AMS: +31 (0)20 575 52 82
KS: +44 (0)20 7389 2450
SK: +44 (0)20 7752 3210

POSTERS
SK: +44 (0)20 7752 3208

PRINTS
AMS: +31 (0)20 575 52 86
KS: +44 (0)20 7389 2266

RUSSIAN WORKS OF ART
KS: +44 (0)20 7389 2662

SCIENTIFIC INSTRUMENTS
SK: +44 (0)20 7752 3286

SCULPTURE
AMS: +31 (0)20 575 52 82

SILVER
KS: +44 (0)20 7389 2331

SPORTING MEMORABILIA
SK: +44 (0)20 7752 3007

TEDDY BEARS
SK: +44 (0)20 7752 3335

TOPOGRAPHICAL PICTURES
AMS: +31 (0)20 575 52 80
KS: +44 (0)20 7389 2040
SK: +44 (0)20 7752 3291

TOYS
SK: +44 (0)20 7752 3274

TRIBAL AND PRE-COLUMBIAN ART
PAR: +33 (0)140 768 386

TWENTIETH CENTURY BRITISH ART
KS: +44 (0)20 7389 2684
SK: +44 (0)20 7752 3311

TWENTIETH CENTURY PICTURES
AMS: +31 (0)20 575 52 82
SK: +44 (0)20 7752 3218

VICTORIAN PICTURES
KS: +44 (0)20 7389 2468
SK: +44 (0)20 7752 3257

WATCHES

AMS: +31 (0)20 575 59 15

WATERCOLOURS AND DRAWINGS
AMS: +31 (0)20 575 52 80
SK: +44 (0)20 7752 3293

WINE
AMS: +31 (0)20 575 52 08

AUCTION SERVICES

CHRISTIE'S FINE ART SECURITY SERVICES
Tel: +44 (0)20 7622 0609
Fax: +44 (0)20 7978 2073
Email: cfass@christies.com

CORPORATE COLLECTIONS
Tel: +44 (0)1798 344440
Fax: +44 (0)1798 344442
Email: nmwrey@christies.com

FINANCIAL SERVICES
Tel: +44 (0)20 7389 2317
Fax: +44 (0)20 7389 2204
Email: nmcullen@christies.com

HERITAGE AND TAXATION
Tel: +44 (0)20 7389 2101
Fax: +44 (0)20 7389 2300
Email: sjohnson@christies.com

HOUSE SALES
Tel: +44 (0)20 7752 3260
Fax: +44 (0)20 7752 3154
Email: awaters@christies.com

MUSEUM SERVICES
US: +1 212 636 2620
Fax: +1 212 636 4929
Email: awhiting@christies.com

PRIVATE SALES
US: +1 212 636 2034
Fax: +1 212 636 2035
Email: jplacent@christies.com

VALUATIONS
Tel: +31 (0)20 575 5975
Fax: +31 (0)20 57 55 954
Email: jdejong@christies.com

OTHER SERVICES

CHRISTIE'S EDUCATION
London
Tel: +44 (0)20 7665 4350
Fax: +44 (0)20 7665 4351
Email: christieseducation@christies.edu
New York
Tel: +1 212 355 1501
Fax: +1 212 355 7370
Email: christieseducation@christies.edu
Paris
Tel: +33 (0)1 42 25 10 90
Fax: +33 (0)1 42 25 10 91
Email: ChristiesEducationParis@christies.com
Melbourne
Tel: +61 (0)3 9820 4311
Fax: +61 (0)3 9820 4876
Email: christieseducation@christies.edu
CHRISTIE'S GREAT ESTATES
US: +1 505 983 8733
Fax: +1 505 982 0348
Email: info@christiesge.com

KEY TO ABBREVIATIONS

AMS: *Amsterdam*
KS: *London, King Street*
NY: *New York, Rockefeller Plaza*
PAR: *Paris*
SK: *London, South Kensington*

BERNARDUS JOHANNES BLOMMERS
(DUTCH, 1845-1914)

A day at the beach

signed 'Blommers' (lower right)
oil on canvas
57 x 82 cm.

€70,000–90,000

Auction
10 June 2009

Viewing
5-9 June 2009

Enquiries
Sarah de Clercq
+31 (0)20 57 55 281
sdeclercq@christies.com

Catalogues
Amsterdam
+31 (0)20 575 5255
New York
+1 800 395 6300
London
+44 (0)20 7389 2820

Amsterdam
Cornelis Schuytstraat 57
1071 JG Amsterdam

View catalogues and
leave bids online at
christies.com



IMPRESSIONIST AND MODERN ART
Amsterdam, 10 June 2009

CHRISTIE'S
SINCE 1766

JEWELS & WATCHES

**WEDNESDAY 29 APRIL 2009
AT 10.30 AM AND 2.00 PM**

Cornelis Schuytstraat 57, 1071 JG Amsterdam
**CODE NAME: AMS
SALE NUMBER: 2816**

(Dealers billing name and address must agree with taxexemption certificate. Invoices cannot be changed after they have been printed.)

BID ONLINE FOR THIS SALE AT CHRISTIES.COM

BIDDING INCREMENTS

Bidding generally opens below the low estimate and advances in increments of up to 10%, subject to the auctioneer's discretion. Absentee bids that do not conform to the increments set below may be lowered to the next bidding interval.

- €100 to €200 by €10
- €200 to €300 by €20
- €300 to €500 by €20-50-80
- €500 to €1,000 by €50
- €1,000 to €2,000 by €100
- €2,000 to €3,000 by €200
- €3,000 to €5,000 by €200-500-800
- €5,000 to €10,000 by €500
- €10,000 to €20,000 by €1,000
- €20,000 to €30,000 by €2,000
- €30,000 to €50,000 by €2,000-5,000-8,000
- €50,000 to €100,000 by €5,000
- €100,000 + by €10,000

The auctioneer may vary the increments during the course of the auction at his or her own discretion.

Auction Results: +44 (0)20 7627 2707

Please also refer to the information contained in Buying at Christie's at the back of this catalogue.

I request Christie's to bid on the following lots up to the maximum price I have indicated for each lot. I understand that if my bid is successful, the purchase price payable shall be the aggregate of the final bid and a VAT inclusive premium calculated at 29.75% of the Hammer Price for each lot up to and including € 20,000, plus 23.8% of the Hammer Price between € 20,001 and € 800,000, plus 14.28% of any amount in excess of € 800,000.

Buyer's Premium is calculated on this basis for each lot individually. Lots marked with a '+' or 'VAT' is applied differently.

I understand that Christie's provides the service of executing absentee bids for the convenience of clients and that Christie's is not responsible for failing to execute bids or for errors relating to execution of bids. On my behalf, Christie's will try to purchase these lots for the lowest possible price, taking into account the reserve and other bids. Absentee bids submitted on "no reserve" lots will, in the absence of a higher bid, be executed at approximately 50% of the low pre-sale estimate or at the amount of the bid if it is less than 50% of the low pre-sale estimate. If identical absentee bids are received for the same lot, the written bid received first at Christie's will take precedence. Absentee bids in another currency will be converted into Euros using the official exchange rate on the day of receipt of the absentee bid. The results of absentee bids will be mailed after the auction. An invoice will be sent to you on the following business day after the sale.

Please contact the Telephone Bid office at least 24 hours in advance of the sale to make arrangements for telephone bidding. Tel: +31 (0)20 575 3950. All bids are subject to the terms of the Conditions of Sale printed in this Christie's catalogue.

ABSENTEE BIDS FORM

CHRISTIE'S AMSTERDAM

Absentee bids must be received at least 24 hours before the auction begins. Christie's will confirm all bids received by fax by return fax. Tel: +31 (0)20 575 52 58/57 Fax: +31 (0)20 575 59 56 on-line www.christies.com

2816

Client Number (if applicable) Sale Number

Billing Name (please print)

Address

Post Code

Daytime Telephone Evening Telephone

Fax (Important) Email

Please tick if you prefer not to receive information about our upcoming sales by e-mail

Signature

New clients, or those who have not made a purchase from any Christie's office within the last two years, will be asked to supply a bank reference. If you are bidding on behalf of a client known to Christie's, you will need to present a signed letter of authorisation and two forms of identification to register. Please be advised that existing clients wishing to spend an amount inconsistent with their previous buying pattern, will also be asked to supply a new bank reference. We also request that you complete the section below with your bank details:

Name of Bank(s)

Address of Banks(s)

Account Number(s)

Name of Account Officer(s)

Bank Telephone Number

PLEASE PRINT CLEARLY

Lot number (in numerical order)	Maximum € Price (excluding buyer's premium)	Lot number (in numerical order)	Maximum € Price (excluding buyer's premium)

If you are registered within the European Community for VAT/IVA/TVA/BTW/MWST/MOMS Please quote number below:

JEWELS AND WATCHES

Catalogue Subscriptions Order Form

Code	Subscription Title	Location	Issues	UKEPrice	US\$Price	EURPrice
Jewellery						
<input type="checkbox"/> K316	Vintage Jewels at South Kensington (included in K16)	South Kensington	2	19	30	29
<input type="checkbox"/> A16	Amsterdam Jewels (includes Watches)	Amsterdam	2	27	44	40
<input type="checkbox"/> D16	Jewels and Watches: The Dubai Sales	Dubai	2	70	114	106
<input type="checkbox"/> N16	Magnificent Jewels: The New York Sales	New York	4	141	228	213
<input type="checkbox"/> L16	Magnificent Jewels: The London Sales	King Street	2	57	95	87
<input type="checkbox"/> P16	Paris Jewels	Paris	2	38	61	57
<input type="checkbox"/> K16	Jewels at South Kensington (includes K316)	South Kensington	10	95	152	143
<input type="checkbox"/> M16	Milan Jewels (includes Watches)	Milan	2	27	44	40
<input type="checkbox"/> G16	Magnificent Jewels: The Geneva Sales	Geneva	2	70	114	106
<input type="checkbox"/> H16	Magnificent Jewels: The Hong Kong Sales (includes Jadeite)	Hong Kong	2	70	114	106
Watches and Wristwatches						
<input type="checkbox"/> A16	Jewels (includes Watches)	Amsterdam	2	27	44	40
<input type="checkbox"/> D16	Jewels and Watches: The Dubai Sales	Dubai	2	70	114	106
<input type="checkbox"/> H44	Important Watches	Hong Kong	2	70	114	104
<input type="checkbox"/> N44	Important Pocket Watches and Wristwatches	New York	2	70	114	104
<input type="checkbox"/> G44	Important Pocket Watches and Wristwatches	Geneva	2	70	114	104
<input type="checkbox"/> M16	Milan Jewels (includes Watches)	Milan	2	27	44	40

Catalogue Subscriptions Order Form

Billing Address/Send catalogues to:

Name _____

Address _____

Daytime Telephone _____ Facsimile _____ e-mail _____

Please tick if you prefer not to receive information about our upcoming sales by e-mail

Christie's Client Number _____

Method of payment: Visa MasterCard American Express

Card Number _____ Expiry Date _____

Card Member Signature _____

Cheque enclosed US\$ UK£ EUR Please make cheque payable to **Christie's**
Residents of the US states of CA, CT, DC, FL, IL, MA, NJ, NY, PA, RI, and TX please add local sales tax.
Residents of Belgium, France, Germany, Italy, the Netherlands, and Spain please add local VAT. Tax Exempt clients must include a copy of their Tax Exempt Certificate.
Orders shipped to North or South America will be charged in US dollars. Orders shipped to the European Union (except the UK) will be charged in euros. All other orders will be charged in UK pounds sterling.

Receive beautifully illustrated catalogues from our auctions around the world. Your private view of some of the world's most beautiful objects and an indispensable guide to forth-coming auctions will be mailed to you as soon as available.

To place an order, please indicate your choice above and complete your details on the left and fax or mail this form. Alternatively, view catalogues free online at christies.com.

Reply to:
Christie's Catalogues, 8 King Street, St James's
London SW1Y 6QT, United Kingdom
Tel: +44 (0)20 7389 2820 Fax: +44 (0)20 7389 2869
subscribe-uk@christies.com

Christie's Catalogues, 20 Rockefeller Plaza
New York, NY 10020, USA
Tel: +1 800 395 6300 Fax: +1 800 395 5600
From outside US
Tel: +1 212 636 2500 Fax: +1 212 636 4940
subscribe-us@christies.com

CHRISTIE'S



CHRISTIE'S

THE BOARD OF CHRISTIE'S

Patricia Barbizet, Chairman,
Edward Dolman, Chief Executive Officer;
Charles Cator, Deputy Chairman,
François Curiel, Deputy Chairman,
Nick Deeming, Pedro Girao, Brett Gorvy,
Nicholas Hall, Lisa King, Stephen Lash,
Viscount Linley, Marc Porter,
Jussi Pylkänen, Theow-Huang Tow

EUROPEAN DIRECTORS

Jussi Pylkänen, President
Angela Baillou, Dr. Dirk Boll,
Roni Gilat-Baharaff, Clarice Pecori Giraldi,
Roland de Lathuy, Eveline de Proyart,
Francois de Ricqlès, Andreas Rumbler,
Jop Ubbens, Juan Varez

CHRISTIE'S EUROPEAN ADVISORY BOARD

Pedro Girao, Chairman,
Christopher Balfour, Patricia Barbizet,
Ginevra Elkann, I. D. Fürstin zu Fürstenberg,
S.D. Dr Johann Georg Prinz von Hohenzollern,
H.R.H. Prince Pavlos of Greece,
Alicia Koplowitz, Robert Manoukian,
Her Grace The Duchess of Marlborough,
Usha Mittal, Leopoldo Rodés, Çiğdem Simavi

CHRISTIE'S AMSTERDAM B.V.

Jop Ubbens, Chairman;
Harco van den Oever, Managing Director;
Jeroen Bulk, General Manager
Hetti von der Gablentz;
Jetske Homan van der Heide;
Senior Directors

Sarah de Clercq; Cees van Emmerik;
Arno Verkade;
Senior Associate Directors

Damian Brenninkmeyer; Marcel Brouwer;
Bernadette de Bruijn; Vera Carasso;
Stefan Doebner; Julia de Jong; Jessica Koers;
Peter Mansell; Yvonne Ploegsma;
Christiaan van Rechteren Limpurg;
Michiel Elsevier Stokmans;
Nicole Verkade-Schraven;
Leila de Vos van Steenwijk,
Associate Directors

AMSTERDAM BASED CERTIFIED VALUERS

Victor Bouman; Marcel Brouwer;
Bernadette de Bruijn; Sarah de Clercq;
Odette van Ginkel;
Jetske Homan van der Heide; Tjabel Klok;
Koen Samson; Jan Pieter Six; Jop Ubbens;
Arno Verkade

AMSTERDAM AUCTION CALENDAR

EUROPEAN NOBLE AND PRIVATE COLLECTIONS

Sale number: 2818

TUESDAY 31 MARCH AT 2.00 PM AND WEDNESDAY 1 APRIL AT 10.30 AM AND 2.00 PM

Viewing: 27, 28, 29 and 30 March

FINE WINE AND VINTAGE PORT

Sale number: 2817

TUESDAY 7 APRIL 10.30 AM & 2.00 PM

JEWELS AND WATCHES

Sale number: 2816

WEDNESDAY 29 APRIL 10.30 AM & 2.00 PM

Viewing: 25, 26, 27 and 28 April

OLD MASTER AND 19TH CENTURY ART

Sale number: 2820

WEDNESDAY 6 MAY 2.00 PM & 7.00 PM

Viewing: 2, 3, 4 and 5 May

FINEST AND RAREST WINES

Sale number: 2824

TUESDAY 19 MAY 6.30 PM

TWO IN ONE:

CONTEMPORARY ART FROM WITTE DE WIT & DE APPEL

Sale number: 2836

WEDNESDAY 20 MAY 5.00 PM

Viewing: 16, 17, 18 and 19 May

IMPRESSIONIST AND MODERN ART

Sale number: 2819

WEDNESDAY 10 JUNE 2.00 PM & 7.00 PM

Viewing: 6, 7, 8 and 9 June

POST-WAR AND CONTEMPORARY ART

Sale number: 2822

WEDNESDAY 17 JUNE 10.30 AM & 2.00 PM

Viewing: 13, 14, 15 and 16 June

FURNITURE AND WORKS OF ART

Sale number: 2825

TUESDAY 30 JUNE 10.30 AM & 2.00 PM

Viewing: 26, 27, 28 and 29 June

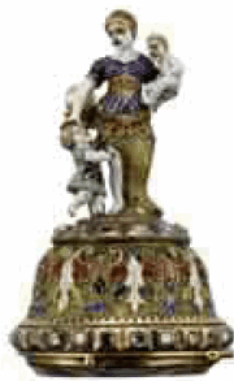
The Paper used in this catalogue has been manufactured at a mill which has been awarded the ISO 14001 for Environment Management and is a registered mill within EMAS (the EU Eco-Management and Audit Scheme)



Printed in England

© Copyright, Christie's Amsterdam B.V. (2004)





CHRISTIE'S

CORNELIS SCHUYTSTRAAT 57 1071 JG AMSTERDAM +31 (0)20 575 52 55 TELEPHONE +31 (0)20 664 08 99 FACSIMILE