

SOUTH KENSINGTON

JEWELS AT
SOUTH KENSINGTON

*Tuesday 14 July 2009
at 2.00 pm*



CHRISTIE'S

INTERNATIONAL JEWELLERY DEPARTMENT & AUCTION CALENDAR

INTERNATIONAL DIRECTOR

François Curiel
Tel: +41 (0)22 319 1700

INTERNATIONAL BUSINESS DIRECTOR

Myriam Christinaz
Tel: +41 (0)22 319 1732

BUSINESS DEVELOPMENT DIRECTOR

Natacha Vassiltchikov
Tel: +41 (0)22 319 1725

SENIOR EUROPEAN DIRECTOR

Raymond Sancroft-Baker
Tel: +44 (0)20 7389 2388

CLIENT DEVELOPMENT

Sarah O'Brien
(International Client
Development Director)
Tel: +44 (0)20 7389 2494

BUSINESS MANAGERS

AMERICAS

Sarah Cashin
Tel: +1 212 636 2300

ASIA

Ida Lee
Tel: +852 2978 9985

LONDON & DUBAI

Amelle de Laubier-Rhally
Tel: +44 (0)20 7389 2831

WORLDWIDE

AMSTERDAM

Jessica Koers
Daniel Girod
Tel: +31 (0)20 575 5915

BANGKOK

Yaovane Nirandara (Liaison)
Tel: +66 2 652 1097

BARCELONA

Cuca Escoda (Liaison)
Tel: +34 (0)93 487 82 59

BERLIN

Frederik Schwarz
Tel: +49 (0) 175 524 4379

CHICAGO

Tel: +1 312 787 2765

DUBAI

David Warren
(Senior International Specialist)
Tel: +44 (0)20 7389 2383

GENEVA

Eric Valdiou
Jean-Marc Lunel
Helen Molesworth
Tel: +41 (0)22 319 1730

HONG KONG

Vickie Sek (Jewellery and Jadeite)
Karen Au Yeung
Tel: +852 2521 5396

JAKARTA

Tel: +62 (0)21 527 2606

KUALA LUMPUR

Lim Meng Hong (Liaison)
Tel: +60 3 2070 8837

LONDON

KING STREET
Keith Penton
Tel: +44 (0)20 7389 2526

Emma Checkley
Tel: +44 (0)20 7389 2483

David Warren
(Senior International Specialist)

Tel: +44 (0)20 7389 2383

SOUTH KENSINGTON

Geoff Young
Tel: +44 (0)20 7752 3267

LOS ANGELES

Tel: +1 310 385 2666

MADRID

Maria Sempere
Tel: +34 (0) 91 532 6627

MILAN

Teresa Scarlata
Tel: +39 02 30 32 83 70

NEW YORK

Rahul Kadakia
Daphne Lingon
Leslie Roskind

Maria Los, Sales Representative
Tel: +1 212 636 2300

PARIS

Marie-Laurence Tixier
Tel: +33 (0)1 40 76 85 81

ROME

Francesco Alverà
Tiziana Appetiti
Tel: +39 06 686 3340

SHANGHAI

Brenda Kang
Tel: +86 21 6279 8773

SINGAPORE

Wen Li Tang
Tel: +65 6235 3828

SYDNEY

Ronan Sulich
Tel: +61 (0) 2 9326 1422

TAIPEI

Ada Ong (Liaison)
Tel: +886 2 2736 3356

TOKYO

Kaori Yoshida (Liaison)
Tel: +81 (0)3 3571 0668

ZURICH

Marianne Trümpler (Liaison)
Tel: +41 (0)44 268 1016

27/04/09

AUCTION CALENDAR

To include your property in these sales please consign ten weeks before the sale date. Contact the specialists or representative office for further information.

17 JUNE

JEWELS AT
SOUTH KENSINGTON
LONDON

14 JULY

JEWELS AT
SOUTH KENSINGTON
LONDON

8 SEPTEMBER

JEWELS AT
SOUTH KENSINGTON
LONDON

6 OCTOBER

PARIS JEWELS

21 OCTOBER

THE NEW YORK SALE

28 OCTOBER

JEWELS AT
SOUTH KENSINGTON
LONDON

28 OCTOBER

THE DUBAI SALE

3 NOVEMBER

AMSTERDAM JEWELS

18 NOVEMBER

THE GENEVA SALE

19 NOVEMBER

JEWELS AT
SOUTH KENSINGTON
LONDON

25 NOVEMBER

MILAN JEWELS

1 DECEMBER

THE HONG KONG SALE

9 DECEMBER

THE LONDON SALE

10 DECEMBER

THE NEW YORK SALE

15 DECEMBER

JEWELS AT
SOUTH KENSINGTON
LONDON

Subject to change.

03/06/09

JEWELS AT SOUTH KENSINGTON

Tuesday 14 July 2009

AUCTION

Tuesday 14 July 2009
at 2.00 pm Lots 1-243
85 Old Brompton Road
London SW7 3LD

AUCTION CODE AND NUMBER

In sending absentee bids or making enquiries, this sale should be referred to as **JLS-5893**

VIEWING

Saturday	11 July	10.00 am - 4.00 pm
Sunday	12 July	10.00 am - 4.00 pm
Monday	13 July	9.00 am - 7.30 pm
Tuesday	14 July	9.00 am - 12.00 noon

AUCTIONEERS

Emma Checkley & Philip Belcher

SPECIALISTS

Geoff Young, F.G.A., D.G.A.
Tel: +44 (0)20 7752 3267
Mark Bowis, F.G.A., D.G.A., F.S.A.
Tel: +44 (0)20 7752 3266
Savannah Britten-Long, G.G.
Tel: +44 (0)20 7752 3351

ADMINISTRATOR

Rachel Evans
Tel: +44 (0)20 7752 3269
Fax: +44 (0)20 7752 3352

BUSINESS MANAGER

Armelle de Laubier-Rhally
Tel: +44 (0)20 7389 2381
Fax: +44 (0)20 7389 2311

EMAIL

First initial followed by last name
@christies.com (eg. Mark Bowis =
mbowis@christies.com)
For general enquiries about this auction,
email should be addressed to the
auction administrator

Front cover: Lot 62
Back cover: Lot 2

SERVICES

ABSENTEE BIDS

Tel: +44 (0)20 7752 3225
Fax: +44 (0)20 7581 1403

AUCTION RESULTS

UK: +44 (0)20 7627 2707
USA: +1 212 703 8080
christies.com

TELEPHONE BIDS

Tel: +44 (0)20 7752 3111
Fax: +44 (0)20 7591 0987

CLIENT LIAISON

Migi Coyle
Tel: +44 (0)20 7752 3179
Victoria Wolcough
Tel: +44 (0)20 7752 3100

This auction features

CHRISTIE'S LIVE™
Bid live in Christie's salerooms worldwide

register at www.christies.com

PAYMENT

BUYERS

Tel: +44 (0)20 7752 3137
Fax: +44 (0)20 7752 3143

VENDORS

Tel: +44 (0)20 7389 2586
Fax: +44 (0)20 7581 5295

SHIPPING

Tel: +44 (0)20 7389 2712
Fax: +44 (0)20 7389 2819

STORAGE AND COLLECTION

Tel: +44 (0)20 7752 3248
Fax: +44 (0)20 7581 3321

CONDITIONS OF SALE

This auction is subject to
Important Notices,
Conditions of Sale and to Reserves

BUYING AT CHRISTIE'S

For an overview of the process, see the
Buying at Christie's section.

[10]

christies.com

CHRISTIE'S

View catalogues and leave bids online
at christies.com

- 1**
A DIAMOND SINGLE STONE RING
 The old brilliant-cut diamond, *weighing approximately 1.10 carats*, in gypsy style mount
 £600-800 US\$910-1,200
 €680-900
- 2**
AN EARLY 19TH CENTURY GOLD AND AMETHYST PARURE
 Comprising: a necklace of claw-set graduated oval amethysts, *one amethyst detached*; a pair of matching drop earpendants, *later screw fittings*; a pair of meshwork bracelets each with oval amethyst single stone clasps in claw mounts; a matching brooch; and a matching gilt mounted amethyst haircomb/diadem designed as a row of graduated oval amethysts in foliate mount, *all circa 1830*
See back cover illustration
 £2,000-3,000 US\$3,100-4,500
 €2,300-3,400
- 3**
A PAIR OF LATE 19TH/EARLY 20TH CENTURY DIAMOND EARRINGS
 Each with cushion shaped old brilliant-cut diamond centre to an old-cut diamond border, hinged hook fittings, *circa 1900* (2)
 £1,000-1,500 US\$1,600-2,300
 €1,200-1,700
- 4**
A GEORGIAN GOLD AND AQUAMARINE NECKLACE
 Each connection composed of two oval aquamarines, one in claw mount, the other a collet, each within gold foliate and scroll surround with shell surmount, to alternating smaller links set with a single aquamarine collet, *approximately 41.0 cm. long*
 £600-800 US\$910-1,200
 €680-900
- 5**
AN EARLY 19TH CENTURY GOLD AND GARNET LOCKET PENDANT AND NECKCHAIN
 The three colour gold heart-shaped hinged locket with chased foliate and garnet decoration, with interior locket compartment and fine belcher link suspension with pendant loop, to a belcher-link neckchain, *approximately 55.0 cm. long, both circa 1830*
 £1,400-1,800 US\$2,200-2,700
 €1,600-2,000
- 6**
A VICTORIAN LOCKET AND CHAIN
 The heart shaped blue enamel locket set to the front with rose-cut diamond flower motif and foliate engraved reverse, suspended from a connection loop and flexible back chain, *circa 1850, approximately 41.0 cm. long*
 £1,500-2,000 US\$2,300-3,000
 €1,700-2,200
- 7**
A MID 19TH CENTURY GOLD, TURQUOISE, DIAMOND AND GEM SERPENT NECKLACE
 Designed as a graduated flexible link necklace with pavé turquoise head and tail, the head with garnet eyes and rose-cut diamond detail, *circa 1850, approximately 40.0 cm. long*
 £1,200-1,500 US\$1,900-2,300
 €1,400-1,700
- 8**
A PAIR OF LATE 19TH CENTURY PEARL AND ROSE-CUT DIAMOND EARRINGS
 Each circular panel with pearl centre to a rose-cut diamond twin row border and single stone surmount, hinged hook fittings, *circa 1890, please note that the pearls have not been tested for natural origin* (2)
 £400-500 US\$610-750
 €450-560
- 9**
A MID 19TH CENTURY GOLD, DIAMOND, ENAMEL AND EMERALD SERPENT BRACELET
 The engraved graduated flexible link bracelet to a pale blue enamel head with old-cut diamond cluster decoration, rose-cut diamond points and emerald eyes, *the reverse with inscription dated 1857, approximately 20.0 cm. long*
 £1,200-1,500 US\$1,900-2,300
 €1,400-1,700
- 10**
A VICTORIAN GOLD, DIAMOND AND ENAMEL SNAKE BANGLE
 The hinged sprung body with blue and white enamel head set with an old brilliant-cut diamond cluster crest with central solitaire diamond *detached*, rose-cut diamond tongue, *circa 1840*
 £3,000-5,000 US\$4,600-7,500
 €3,400-5,600



- 11**
A LATE 19TH CENTURY DIAMOND FIVE STONE RING AND A SMALL GROUP OF CULTURED PEARL JEWELLERY
 Comprising: the ring with five old brilliant-cut diamonds and rose-cut diamond points, *some deficient, two replaced with paste*, to carved gallery, *circa 1890*; a pair of cultured pearl and diamond earpendants, the pear shaped cultured pearl drops to old-cut diamond two stone collet suspensions, post fittings; and three graduated cultured pearl necklaces, one with cultured pearl single stone clasp, the other two with marcasite cluster clasps (2)
 £700-900 US\$1,100-1,400
 €790-1,000
- 12**
AN 18CT. GOLD AND PERIDOT PENDANT, BY THEO FENNEL
 The pendant modelled as a key with cylindrical peridot stem, cabochon peridot terminal and oval buff top peridot surmount, to an 18ct. gold fancy link neckchain, *pendant hallmarked London 1999, neckchain hallmarked Birmingham 1999*
 Pendant with maker's mark TF
 £500-700 US\$760-1,100
 €570-790
- 13**
A LAPIS LAZULI NECKLACE
 The chain composed of lapis lazuli batons with lozenge shaped textured links, suspending an oval lapis lazuli plaque carved to depict an Oriental lady, *approximately 84.0 cm. long*
 £800-1,200 US\$1,200-1,800
 €900-1,300
- 14**
A CULTURED PEARL, DIAMOND AND ENAMEL NECKLACE, BY DE VROOMEN
 The uniform row of cultured pearls with detachable clasp/brooch of circular design with blue enamel border, central cultured pearl and pavé diamond floral motif, *clasp/brooch with London hallmark, approximately 93.0 cm. long*
 Clasp/brooch with maker's initials L.D.V.
 £1,000-1,500 US\$1,600-2,300
 €1,200-1,700
- 15**
A DIAMOND SINGLE STONE RING
 The old brilliant-cut diamond in claw mount to an 18 ct gold hoop, *Convention hallmark, Birmingham*
 £2,000-3,000 US\$3,100-4,500
 €2,300-3,400
- 16**
A PAIR OF IOLITE AND DIAMOND EARRINGS
 Comprising twin oval shaped iolites within brilliant-cut diamond cluster surrounds to single stone diamond collet connection (2)
 £600-800 US\$910-1,200
 €680-900
- 17**
A DIAMOND SINGLE STONE RING
 The brilliant-cut diamond in 18ct. gold scalloped claw mount and wide band, *hallmarked London 1979*
 £800-1,200 US\$1,200-1,800
 €900-1,300
- 18**
AN MULTI-STRAND TORSADE NECKLACE, BY KHAZANA
 Comprising fifteen rows of faceted colourless beryl beads with octahedral bead terminals, *unsigned, approximately 78.0 cm. long*
 £1,200-1,600 US\$1,900-2,400
 €1,400-1,800
- 19**
AN 18 CT GOLD AND DIAMOND BROOCH
 Of domed openwork woven design with brilliant-cut diamond tapered line detail, *London hallmark*
 £900-1,100 US\$1,400-1,700
 €1,100-1,200
- 20**
A DIAMOND CLUSTER BROOCH/PENDANT
 The circular openwork gold plaque claw set with old brilliant-cut diamonds in scalloped mounts, *first half of the 20th century, spurious marks to the pin*
 £1,000-1,500 US\$1,600-2,300
 €1,200-1,700
- 21**
A PAIR OF COLOURED DIAMOND AND DIAMOND EARRINGS
 Each with open domed oval shaped drop, link suspension and matching surmount, set with yellow diamonds and diamond detail, *please note that the yellow diamonds have not been tested for natural colour origin* (2)
 £1,300-1,600 US\$2,000-2,400
 €1,500-1,800
- 22**
A DIAMOND BRACELET
 Composed of a line of brilliant-cut diamond collets, *approximately 17.0 cm. long*
 £500-700 US\$760-1,100
 €570-790



- 23**
A DEMANTOID GARNET AND DIAMOND PENDANT NECKLACE
 The oval demantoid garnet with diamond border and single stone surmount, to a trace link neckchain
 £1,200-1,500 US\$1,900-2,300
 €1,400-1,700
- 24**
AN EDWARDIAN PEARL AND DIAMOND PENDANT
 The flowerhead cluster drop with central pearl to an old brilliant-cut diamond surround, knife edge bar suspension with old brilliant-cut diamond collet accent and single stone top within an openwork trefoil border, *circa 1905, in fitted case, neckchain deficient, please note that the pearl has not been tested for natural origin*
 £500-700 US\$760-1,100
 €570-790
- 25**
A CULTURED PEARL, DIAMOND AND PEARL PENDANT NECKLACE
 The pendant composed of grey and white cultured pearl tassel drops to a brilliant-cut diamond set cupola surmount, suspended from a fine link neckchain with pearl spacers, *please note that the pearls in the neckchain have not been tested for natural origin*
 £2,400-2,800 US\$3,700-4,200
 €2,700-3,100
- 26**
A VICTORIAN GOLD, ENAMEL, OPAL, DIAMOND AND CULTURED PEARL ST. ESPRIT PENDANT
 The blue enamel bird with pear shaped opal body, old-cut diamond head, garnet eyes, rose-cut diamond detail and red enamel beak suspending a blue enamel heart shaped locket pendant with old-cut diamond trefoil cluster to a later cultured pearl drop, *circa 1860*
 £600-800 US\$910-1,200
 €680-900
- 27**
AN EDWARDIAN DIAMOND PENDANT
 The circular pendant with central old brilliant-cut diamond collet against a grill design ground with rose-cut diamond surround and old and rose-cut diamond wreath border, *circa 1905*
 £700-900 US\$1,100-1,400
 €790-1,000
- 28**
A LATE 19TH CENTURY PEARL AND DIAMOND PENDANT/BROOCH
 The oval pendant with central pearl and old brilliant-cut diamond cluster to a pierced scroll surround and pearl border, *circa 1880, detachable brooch fitting, please note that the pearls have not been tested for natural origin*
 £400-600 US\$610-900
 €450-670
- THE PROPERTY OF A NOBLEMAN
•29
A SMALL GROUP OF GOLD OBJECTS
 Comprising: a late 19th century gold locket pendant of twin scarab design, *circa 1880*; an early 19th century gold oval snuff box with engraved Greek key and looped decoration, the lid with engraved flowerhead, the base with engraved monogram, the lid hinged in the middle opening to reveal twin compartments; and a gold vesta case, the front with rose-cut diamond ship on shaded green and blue enamel sea, *circa 1900* (3)
 £1,000-1,500 US\$1,600-2,300
 €1,200-1,700
- VARIOUS PROPERTIES
•30
SIX LATE 19TH/EARLY 20TH CENTURY GOLD AND DIAMOND LOCKET PENDANTS
 Comprising: five vari-sized heart shaped pendants each set with a single old brilliant-cut diamond in star mount, one with engraved monogram to the reverse, *one 18ct. gold hallmarked Birmingham 1907*; and an hexagonal pendant, the central old brilliant-cut diamond within a green guilloché enamel surround, *later re-enamelled*, to a raised foliate border, *circa 1900* (6)
 £400-600 US\$610-900
 €450-670
- 31**
A LATE 19TH CENTURY GOLD AND PEARL NECKLACE
 Composed of a line of pearl drops with ropetwist tops, *circa 1890, approximately 39.0 cm. long, cased*
Accompanied by report No. 0806/29, dated 18/6/08 from Gwilym M Jones FGA DCA stating that the pearls were found to be natural
 £3,000-4,000 US\$4,600-6,000
 €3,400-4,500
- 32**
A DIAMOND AND ENAMEL BROOCH
 Modelled as a horse and jockey with pavé rose-cut diamond horse, the jockey with blue enamel racing colours, white enamel breeches, black and brown enamel boots and flesh coloured enamel face
 £1,000-1,500 US\$1,600-2,300
 €1,200-1,700
- 33**
A LATE VICTORIAN GOLD, DIAMOND AND SAPPHIRE SET BRACELET
 Composed of a series of gate link panels with twist detail and alternately set with a sapphire or old brilliant-cut diamond collet with triple bead divisions, *circa 1880, one diamond replaced with a modern brilliant-cut stone, approximately 20.0 cm. long*
 £500-700 US\$760-1,100
 €570-790



23

24

25

26

27

28

29

30

30

31

32

33

30

29

**34

AN EARLY 20TH CENTURY REVERSE PAINTED ROCK CRYSTAL INTAGLIO AND DIAMOND PENDANT

The circular intaglio painted to depict a stage coach with mother-of-pearl reverse, to an old brilliant-cut diamond border and diamond two stone surmount

£1,800-2,200 US\$2,800-3,300
€2,100-2,500

Please note that this lot will be subject to US Fish and Wildlife restrictions if it is imported into the USA

•35

A LATE 19TH CENTURY DIAMOND JABOT PIN

Modelled as a nail set throughout with old-cut diamonds, the head with old brilliant-cut diamond accent

£600-800 US\$910-1,200
€680-900

•36

A LATE 19TH CENTURY GOLD, CULTURED PEARL AND ROSE-CUT DIAMOND NOVELTY PENDANT, BY HAMILTON & CO.

Modelled as a cannon with foliate scroll engraved gun carriage and monogram design wheels with rose-cut diamond accents to the rim, to a later cultured pearl gun barrel, *gun carriage circa 1890*

Signed Hamilton & Co. Calcutta
£400-600 US\$610-900
€450-670

Ψ37

A LATE 18TH CENTURY AGATE AND ROSE-CUT DIAMOND ETUI CASE

Of tapered form, the faceted agate case with rose-cut diamonds fittings in silver gilt scroll design mounts, foiled ruby thumbpiece and single stone accent, *interior empty, in leather case*

£1,000-1,500 US\$1,600-2,300
€1,200-1,700

38

A DIAMOND, GARNET AND PEARL BROOCH

Modelled as a shell set with lines of graduated circular green garnets and old-cut diamonds, with single pearl accent, *please note that the pearl has not been tested for natural origin*

£1,500-2,000 US\$2,300-3,000
€1,700-2,200

39

A LATE 19TH CENTURY SCOTTISH GOLD AND HARDSTONE BROOCH
Modelled as a powder horn set with vari-coloured agates, with pink foiled rock crystal accents and faceted citrine terminal, *circa 1880*

£600-800 US\$910-1,200
€680-900

THE PROPERTY OF A NOBLEMAN

Ψ*40

A LATE 19TH CENTURY DIAMOND AND RUBY MONOGRAM BROOCH AND AN EARLY 19TH CENTURY ROSE-CUT DIAMOND SET LOCKET PENDANT

The brooch composed of a closed-set ruby scrolling "C" entwined with closed-set old-cut diamond "B" and "C", *circa 1880*; the rock crystal locket pendant with rose-cut diamond surmount, *circa 1830* (2)

£500-700 US\$760-1,100
€570-790

Ω41

A PAIR OF EARLY 20TH CENTURY ROYAL PRESENTATION GOLD, REVERSE PAINTED ROCK CRYSTAL INTAGLIO AND ENAMEL CUFFLINKS

Each composed of two oval intaglio links, one painted with the monogram of King George V beneath a crown, the other Queen Mary, to green guilloché enamel borders, with chain link connections, *circa 1910* (2)

£600-800 US\$910-1,200
€680-900

VARIOUS PROPERTIES

42

A PAIR OF DIAMOND AND ENAMEL CUFFLINKS

The oval blue guilloché enamel panels with applied Russian eagle with rose-cut diamond accent, to rose-cut diamond borders and opposed marquise shaped blue guilloché enamel panels with hinged fittings (2)

£500-800 US\$760-1,200
€570-900

THE PROPERTY OF A NOBLEMAN

*43

A PAIR OF LATE 19TH/EARLY 20TH CENTURY GOLD, DIAMOND AND ENAMEL CUFFLINKS

The pink guilloché enamel circular panels with white enamel borders, painted white enamel wreath detail and old-cut diamond single stone accents, single clip connections, *circa 1900* (2)

£800-1,200 US\$1,200-1,800
€900-1,300



34



36



35



38



40



40



39



37



41



42



43

VARIOUS PROPERTIES

- 44**
A SUITE OF DIAMOND AND BRONZE SET JEWELLERY, BY CHAUMET
 Comprising: a hinged torque design necklace, one terminal with hammered effect berries to bronze leaves with brilliant-cut diamond edging, the other terminal of twist design with oval bronze accent; and a pair of earclips of similar design, the single bronze leaves with brilliant-cut diamond edging; *French marks, circa 1975, in retailer's case by Wolfers* (3)
 Necklace and one earclip with applied plaque stamped Chaumet Paris
 £2,500-3,000 US\$3,800-4,500
 €2,900-3,400
- 45**
A SUITE OF 18CT. GOLD, DIAMOND AND ENAMEL JEWELLERY, BY DE VROOMEN
 Comprising: a brooch of graduated black enamel circular loop design with opposed graduated pavé diamond triangular panels and polished triangular accents, *hallmarked London 1989*; and a pair of matching demi-lune black enamel earrings with pavé diamond triangular panel accent, in two colour mounts, clip and later post fittings, *chip to enamel, hallmarked London 1988*
 All with maker's mark L.D.V, earrings signed de Vroomen
 £1,000-1,500 US\$1,600-2,300
 €1,200-1,700
- 46**
TWO 18CT. GOLD RINGS, BY BULGARI
 The first of two colour modular design, *London import mark 1990*; the second of twin hoop design, the oval iolite and topaz single stones to reeded mounts, *hallmarked London 1992* (2)
 Both rings signed Bulgari with maker's mark S.B
 £600-800 US\$910-1,200
 €680-900
- 47**
AN 18CT. GOLD, AQUAMARINE AND DIAMOND RING, BY ANDREW GRIMA
 The cut-cornered rectangular aquamarine to a brilliant-cut diamond border and opework textured gallery and hoop, *hallmarked London 1968*
 Signed Grima with maker's mark HJCo
 £1,200-1,600 US\$1,900-2,400
 €1,400-1,800
- 48**
A DIAMOND AND CULTURED PEARL COLLAR NECKLACE
 Set to the front with pavé brilliant-cut diamond stepped panels with cultured pearl and diamond cluster spacers and fluted divisions, to a fluted panel back section
 £1,000-1,500 US\$1,600-2,300
 €1,200-1,700
- Ψ•49**
A PAIR OF RUBY SET CUFFLINKS
 The fluted circular panels with central circular ruby collet, *spurious marks* (2)
 £500-700 US\$760-1,100
 €570-790
- 50**
SEVEN DIAMOND BRACELETS
 Each composed of a line of brilliant-cut diamond collets mounted in 18ct. gold, *London hallmarks, measuring approximately 17.7 (2), 18.0 (3) and 18.2 cm. (2) respectively* (7)
 £1,400-1,600 US\$2,200-2,400
 €1,600-1,800
- 51**
AN ITALIAN TIGER'S EYE SET BRACELET
 Composed of domed cushion shaped tiger's eye loops with plain polished bar spacers, *approximately 20.0 cm. long*
 £1,000-1,500 US\$1,600-2,300
 €1,200-1,700
- 52**
A GREEN TOURMALINE SET BRACELET
 Composed of a series of graduated oval green tourmalines with graduated oval link spacers, each with openwork figure-of-eight motif, *approximately 18.0 cm. long*
 £900-1,100 US\$1,400-1,700
 €1,100-1,200
- 53**
AN ITALIAN BANGLE
 Of hinged openwork sculptural design, *signed Mancadori*
 £600-800 US\$910-1,200
 €680-900



44

44

45

46

47

49

48

50

51

52

53

- 54**
A CULTURED PEARL, SAPPHIRE AND DIAMOND NECKLACE AND SAPPHIRE AND DIAMOND EARCLIPS
 The cultured pearl single row, *graduating from approximately 5.0 mm. to 10.0 mm.*, to an old brilliant-cut diamond and sapphire clasp of lozenge design, *approximately 46.5 cm. long*; the earclips of layered flowerhead design with central six stone sapphire cluster to brilliant-cut diamond accent points, clip fittings (3)
 £600-800 US\$910-1,200
 €680-900
- 55**
A DIAMOND, TOURMALINE AND EMERALD SNAKE BROOCH
 The central oval tourmaline cabochon encircled by the pavé brilliant-cut diamond body to textured head with cabochon emerald eyes, twin-prong clip fitting
 £1,200-1,500 US\$1,900-2,300
 €1,400-1,700
- 56**
AN INDIAN GREEN BERYL NECKLACE
 Of multi-strand design with two panel spacers embellished with foiled colourless gem and red foiled gem details, to a cord fastening
 £600-800 US\$910-1,200
 €680-900
- 57**
A SMALL GROUP OF CULTURED PEARL JEWELLERY
 Comprising: a pair of mabé cultured pearl earstuds with textured branch design frame and brilliant-cut diamond accents together with a pink pear shaped cultured pearl pendant to pink diamond star shaped cusp and loop suspension, *please note that the coloured diamonds have not been tested for natural origin* (3)
 £800-1,200 US\$1,200-1,800
 €900-1,300
- Ψ58**
A PAIR OF RUBY AND DIAMOND EARPENDANTS
 Each oval ruby cabochon drop to six stone brilliant-cut diamond surmount to baguette and brilliant-cut diamond suspension, post fittings
 £800-1,000 US\$1,200-1,500
 €900-1,100
- Δ59**
A YELLOW ZIRCON AND DIAMOND RING
 The oval yellow zircon to two stone baguette diamond shoulders
 £200-300 US\$310-450
 €230-340
- Ψ**60**
A SMALL GROUP OF JEWELLERY
 Comprising: two 18ct. gold frog brooches, one playing the symbols with pavé brilliant-cut diamond accents and emerald eyes, *hallmarked London 1990*, the other by Theo Fennell with pale blue gem collet accents and ruby eyes, *signed Fennell with maker's mark TF, hallmarked London 1998*, together with a multi-gem necklace and earclips of matching flower spray design each with oval fancy-cut amethyst centre, amethyst, turquoise and mother of pearl flowers with diamond accents, and vari-gem detail, the pendant with briolette amethyst drop to trace link neckchain (5)
 £700-900 US\$1,100-1,400
 €790-1,000
- Please note that this lot will be subject to US Fish and Wildlife restrictions if it is to be imported into the USA*
- 61**
A VARI-COLOURED SAPPHIRE BRACELET
 Of open work flexible mesh design, the blue, pink, orange and green sapphires in claw mounts, *approximately 18.4 cm. long*
 £3,000-4,000 US\$4,600-6,000
 €3,400-4,500
- Ψ•62**
AN 18CT. GOLD, RUBY AND DIAMOND BROOCH, BY KUTCHINSKY
 Modelled as a flower with brilliant-cut diamond cluster centre and pavé-set circular ruby embellished petals to entwined ruby and gold leaves and patinated stalk, *hallmarked London 1977*
See front cover illustration
 Signed Kutchinsky
 £800-1,200 US\$1,200-1,800
 €900-1,300
- **63**
TWO PAIRS OF EARCLIPS
 One of domed circular panel design with paisley decoration, reed borders and baguette diamond accents; the second mother-of-pearl flowerheads with cabochon citrine centres (4)
 £700-900 US\$1,100-1,400
 €790-1,000
- Please note that this lot will be subject to US Fish and Wildlife restrictions if it is to be imported into the USA*
- Ψ64**
A SMALL GROUP OF JEWELLERY
 Comprising: a ropework design bracelet with tassel terminal and ruby detail; an old brilliant-cut diamond and ruby five stone ring of half hoop design; and a calibré sapphire eternity ring, *finger size K* (3)
 £900-1,100 US\$1,400-1,700
 €1,100-1,300
- 65**
A PAIR OF VARI-COLOURED SAPPHIRE EARCLIPS
 Of shaped garland design set with oval, vari-coloured sapphires including blue, pink, orange, yellow and green, post and clip fittings (2)
 £1,200-1,500 US\$1,900-2,300
 €1,400-1,700
- 66**
A DIAMOND RING
 Of geometric design with a recessed panel of pavé-set brilliant-cut diamonds, *in maker's case by Skrein*
 £600-800 US\$910-1,200
 €680-900



- 67**
A PAIR OF DIAMOND EARRINGS
 Of flowerhead design, the central cluster to two stone petals, set throughout with brilliant-cut diamonds, *central clusters detachable for separate wear*, post fittings (2)
 £1,200-1,500 US\$1,900-2,300
 €1,400-1,700
- 68**
A DIAMOND PENDANT NECKLACE
 The marquise diamond single stone drop suspended within a diamond frame to a single collet suspension, diamond suspension loop and trace link neckchain
 £6,500-7,500 US\$9,800-11,000
 €7,300-8,400
- 169**
A PEAR SHAPED DIAMOND COLLET AND A GROUP OF UNMOUNTED GEMSTONES
 Comprising: the pear shaped diamond in collet mount; an oval black opal, weighing 3.52 carats; a circular cabochon emerald, weighing 6.41 carats; two cultured pearls, approximate diameters 15.0 and 15.8 mm.; a brilliant and two baguette diamonds, total carat weight 0.56 carats; and a group of drilled cultured pearls and pearls, *please note that the pearls have not been tested for natural origin* (15)
 £2,500-3,000 US\$3,800-4,500
 €2,900-3,400
- 70**
A DIAMOND NECKLACE
 Composed of a line of brilliant-cut diamonds in claw mounts with flowerhead cluster spacers, *approximately 43.0 cm. long*
 £2,400-2,600 US\$3,700-3,900
 €2,700-2,900
- 71**
A DIAMOND NECKLACE
 The brilliant-cut diamond collet triple and twin row swag front to a twin row back section with baguette diamond scroll and curved panel accents, *approximately 42.5 cm. long*
 £7,000-10,000 US\$11,000-15,000
 €7,900-11,000
- 72 NO LOT**
- 73**
A PAIR OF DIAMOND SINGLE STONE EARRINGS
 The brilliant-cut diamonds in stepped collet mounts, clip and post fittings, *one post deficient* (2)
 £3,000-4,000 US\$4,600-6,000
 €3,400-4,500
- 74**
A DIAMOND RING
 Of rectangular panel design, the raised graduated old brilliant-cut diamond twin lines against a pavé diamond ground, to a broad tapering hoop
 £800-1,200 US\$1,200-1,800
 €900-1,300
- 75**
A RUBY AND DIAMOND RING
 The oval ruby, weighing 2.24 carats, in claw mount to brilliant-cut diamond line shoulders and gallery
 £1,000-1,200 US\$1,600-1,800
 €1,200-1,300
- 76**
A CULTURED PEARL NECKLACE
 The grey cultured pearl single row, *graduating from approximately 14.5 to 11.0 mm.*, to a colourless gem spherical clasp, *approximately 46.0 cm. long*
 £2,700-3,000 US\$4,100-4,500
 €3,100-3,400
- 77**
A DIAMOND AND RUBY RING
 Of triple cluster design, the three old-cut diamonds in circular ruby conjoined borders to an old-cut diamond surround
 £350-500 US\$530-750
 €400-560
- 78**
A DIAMOND AND RUBY RING
 The central princess-cut diamond square cluster to calibré ruby tapered triple line shoulders and pavé diamond ridged borders
 £500-700 US\$760-1,100
 €570-790
- 79**
A PAIR OF CULTURED PEARL AND DIAMOND EARPENDANTS
 Each cultured pearl drop to a brilliant-cut diamond line suspension and diamond three stone surmount, post fittings (2)
 £500-700 US\$760-1,100
 €570-790
- 80**
A PAIR OF RUBY AND DIAMOND EARRINGS
 Of old-cut diamond scrolling flower design with ruby bead accent, clip and post fittings, *circa 1935* (2)
 £1,500-2,000 US\$2,300-3,000
 €1,700-2,200
- 81**
AN EMERALD AND DIAMOND RING
 The oval emerald in gypsy style mount with brilliant-cut diamond shoulder detail
 £600-800 US\$910-1,200
 €680-900
- 82**
A SMALL GROUP OF JEWELLERY
 Comprising: a diamond bracelet composed of a line of brilliant-cut diamond collets, *approximately 17.7 cm. long*; a pair of ruby and diamond earrings of graduated ruby five row curved panel design with diamond points, clip and post fittings; a freshwater seed pearl long chain necklace, *approximately 142.0 cm. long*; an amethyst single stone ring, the fancy-cut square amethyst in stepped mount; a sapphire and ruby three stone clasp fitting; a swag design bead bracelet; and an onyx bead bracelet (7)
 £850-950 US\$1,300-1,400
 €960-1,100
- 83**
A RUBY AND DIAMOND RING
 The broad tapering hoop set to the front with a single oval ruby, to diamond and baguette diamond openwork trellis design shoulders and diamond line borders
 £1,000-1,500 US\$1,600-2,300
 €1,200-1,700
- 84**
A SMALL GROUP OF JEWELLERY
 Comprising: a diamond, coloured diamond and garnet brooch pin, one terminal a marquise and fancy-cut garnet spray with orange diamond accents, the other a diamond pierced tapered panel with lozenge shaped garnet detail, *one diamond deficient, please note that the orange diamonds have not been tested for natural colour origin*; two novelty rings, one with a hardstone dog with pink sapphire eyes and collar detail, the other a hardstone cat with sapphire eyes and diamond ribbon detail; a brooch modelled as a textured penguin with diamond eye; and a stylised two colour bird brooch with oval lapis lazuli body (5)
 £1,200-1,500 US\$1,900-2,300
 €1,400-1,700



- 85**
A LATE 19TH CENTURY GOLD COLLAR NECKLACE
 Of archaeological revival style, composed of a series of shaped geometric panels on a meshwork back, *circa 1890, approximately 41.0 cm. long*
 £500-700 US\$760-1,100
 €570-790
- 86**
A 19TH CENTURY SUITE OF MICRO MOSAIC JEWELLERY
 Comprising: a necklace composed of nine gold mounted oval graduated mosaic panels alternately depicting Roman monuments and sprays of flowers to a mosaic clasp depicting a butterfly; a pair of matching mosaic single panel and chain-link bracelets, brooch and a pair of earpendants, *circa 1830, general damages throughout, fitted case*
 £1,500-2,000 US\$2,300-3,000
 €1,700-2,200
- **87**
A LATE 19TH CENTURY GOLD, CORAL BROOCH
 Designed as a bouton coral circular cluster with half-pearl detail suspending coral triple torpedo drops with seed pearl and onyx coral accents, to a matching suspension loop *circa 1880, French marks*
 £600-800 US\$910-1,200
 €680-900
Please note that the coral in this lot is corallium and that this lot will be subject to US Fish and Wildlife restrictions if it is to be imported into the USA
- 88**
A 19TH CENTURY GOLD-MOUNTED AGATE CAMEO BROOCH
 The oval agate cameo carved to depict a classical female provile, the mount with pierced key pattern border, *circa 1890*
 £400-500 US\$610-750
 €450-560
- **89**
A PAIR OF CORAL EARPENDANTS
 Each composed of a single coral *corallium* drop carved as a scarab with beadwork summit, suspended from a smaller scarab to loop mounts (2)
 £800-1,200 US\$1,200-1,800
 €900-1,300
Please note that this lot will be subject to US Fish and Wildlife restrictions if it is to be imported into the USA
- 90**
AN EDWARDIAN DIAMOND RING
 Designed as an old brilliant-cut diamond three stone crossover with triple-row hoop, each central diamond with old brilliant and rose-cut diamond graduated shoulders and rose-cut diamond accents to reeded hoops, *circa 1905*
 £400-600 US\$610-900
 €450-670
- 91**
AN EARLY 19TH CENTURY GOLD AND SWISS ENAMEL DEMI-PARURE
 Composed of a pendant with pierced fan-shaped panel suspending a navette shaped drop mounted with painted swiss enamel depicting the profile of a lady in traditional costume her hair adorned with flowers and feathers the central garland set with three rose-cut diamonds and with pearl and diamond detail above and below the border with scroll decoration; and a pair of matching earpendants, *circa 1840, fitted case* (3)
 £1,500-2,000 US\$2,300-3,000
 €1,700-2,200
- 92**
AN EARLY 19TH CENTURY ROSE-CUT DIAMOND CLUSTER RING
 The central closed-set rose-cut diamond with rose-cut diamond surround, mounted in silver and gold, *circa 1840*
 £600-800 US\$910-1,200
 €680-900
- 93**
A PAIR OF 19TH CENTURY GOLD-MOUNTED SARDONYX CAMEO EARPENDANTS
 Each composed of a single oval sardonyx cameo drop depicting the profile head of Diana within pierced border decorated with seed pearls and black enamel detail, *circa 1880* (2)
 £600-800 US\$910-1,200
 €680-900
- 94**
A LATE 19TH CENTURY GOLD MOUNTED SHELL CAMEO BROOCH
 The oval cameo carved to depict an allegorical scene of a women on bended knee with cherub seated upon her back bearing a whip, *possibly representing the penitent Mary Magdalene, the gold mount with locket back, circa 1880*
 £500-700 US\$760-1,100
 €570-790
- 95**
A PAIR OF EMERALD AND DIAMOND EARPENDANTS
 Each composed of antique components comprising a foiled emerald suspending a faceted pear-shaped drop in cagework mount suspending a table-cut diamond drop to a bow-shaped openwork panel connecting link with table-cut diamond centre (2)
 £500-700 US\$760-1,100
 €570-790



85

86

88

87

93

89

90

91

92

94

95

Ψ96

A LATE 19TH CENTURY ONYX, DIAMOND, RUBY AND EMERALD PAPAL LOCKET

The large oval hinged onyx locket with applied rose-cut diamond figurative decoration of a mitre, ribbon and bound cross key motif representing the Vatican, with ruby, sapphire and emerald detail to diamond and ruby pendant loop, *circa 1880*

£2,000-3,000

US\$3,100-4,500

€2,300-3,400

97

A DIAMOND NECKLACE

Designed as a graduated line of collet-set old brilliant and rose-cut diamond knife edge articulated links, *approximately 35.0 cm. long*

£800-1,000

US\$1,200-1,500

€900-1,100

98

A ROSE-CUT DIAMOND RING

The central oval rose-cut diamond flanked to either side by a pear shaped rose-cut diamond with rose-cut diamond points, all in foiled mounts

£3,000-4,000

US\$4,600-6,000

€3,400-4,500

•99

A SEED PEARL AND DIAMOND CHOKER NECKLACE

The seed pearl multi-row choker with central rose-cut diamond pierced panel of foliate design to slide action clasp, *approximately 25.0 cm. long*

£800-1,200

US\$1,200-1,800

€900-1,300

100

A PEARL AND DIAMOND NECKLACE

The single row of pearls to diamond single stone clasp, *diamond detached, please note that the pearls have not been tested for natural origin*

£1,500-2,000

US\$2,300-3,000

€1,700-2,200

•101

A LATE VICTORIAN DIAMOND BROOCH

Modelled as twin hearts pierced by an arrow, pavé set with old brilliant-cut diamonds, *circa 1890*

£500-700

US\$760-1,100

€570-790

102

A LATE VICTORIAN DIAMOND BROOCH

Modelled as a crescent moon with twin-row of old brilliant-cut diamonds, mounted in gold, *circa 1880*, with later brooch fitting

£600-800

US\$910-1,200

€680-900

103

A PAIR OF DIAMOND AND COLOURED DIAMOND EARPENDANTS

Each with a pear shaped old brilliant-cut brown diamond drop suspended from a single old brilliant-cut brown diamond surmount with five stone old brilliant-cut diamond connecting panel, hook fittings, *please note that the brown diamonds have not been tested for natural colour origin* (2)

£900-1,100

US\$1,400-1,700

€1,100-1,200

104

A LATE VICTORIAN GOLD AND DIAMOND BANGLE

The hinged hoop with central old brilliant-cut diamond circular border, *central stone deficient*, to old brilliant-cut diamond shoulders with scrolling gold detail to open-work linear design hoop, *circa 1890*

£1,500-2,000

US\$2,300-3,000

€1,700-2,200

105

A LATE VICTORIAN GOLD AND MOONSTONE BANGLE

Set with a graduated line of oval moonstones to an openwork linear design hinged hoop, *circa 1890*, in fitted case

£1,500-2,000

US\$2,300-3,000

€1,700-2,200

106

A PAIR OF DIAMOND CLUSTER EARPENDANTS

Composed of two old brilliant-cut cushion shaped diamond clusters with old-cut diamond line surround and single stone diamond suspension and surmount, hook fittings (2)

£2,000-2,500

US\$3,100-3,800

€2,300-2,800



•107

A PAIR OF CULTURED PEARL AND DIAMOND EARRINGS

Each with marquise diamond four stone base to a single cultured pearl, clip fittings (2)

£800-1,200 US\$1,200-1,800
€900-1,300

108

A DIAMOND RING

Of pavé diamond bombé design with matching tapering hoop, one diamond deficient

£2,000-2,500 US\$3,100-3,800
€2,300-2,800

109

A PEARL AND DIAMOND CLUSTER RING

The central bouton shaped pearl to an old brilliant-cut diamond surround
Accompanied by a photocopy of pearl report No. 0127970 from The Gem Testing Laboratory of Great Britain, dated 26 February 2008 stating that the pearl weighing 10.02 carats was found to be a Natural Pearl

£3,000-4,000 US\$4,600-6,000
€3,400-4,500

110

A CULTURED PEARL AND DIAMOND NECKLACE

The slightly graduated double row of cultured pearls to a brilliant and baguette-cut diamond pierced shaped scroll design panel clasp, approximately 52.7 cm. long

£2,500-3,000 US\$3,800-4,500
€2,900-3,400

111

A DIAMOND BROOCH

Composed of a line of graduated old brilliant-cut diamonds in millegrain collet mounts on a knife edge bar, circa 1930

£2,000-2,500 US\$3,100-3,800
€2,300-2,800

112

A DIAMOND RING

The central line of five square-cut diamonds between pavé diamond domed line borders

£1,200-1,500 US\$1,900-2,300
€1,400-1,700

113

AN AQUAMARINE AND DIAMOND RING

The cut-cornered rectangular aquamarine to brilliant-cut diamond three stone shoulders

£800-1,200 US\$1,200-1,800
€900-1,300

114

A CULTURED PEARL AND DIAMOND PENDANT

The cultured pearl drop, approximate diameter 14.0 mm., to the brilliant-cut diamond collet connecting-link and suspension loop

£500-700 US\$760-1,100
€570-790

115

A SMALL GROUP OF AQUAMARINE JEWELLERY

Comprising: a brooch, the cut-cornered rectangular aquamarine to a textured petal border; a pair of matching earclips; and an aquamarine and diamond ring, the cut-cornered rectangular aquamarine to eight-cut diamond trefoil shoulders (4)

£800-1,200 US\$1,200-1,800
€900-1,300

•116

A DIAMOND THREE STONE RING

The central cut-cornered rectangular diamond to baguette diamond single stone shoulders, in 18ct. gold mount

£700-900 US\$1,100-1,400
€790-1,000

117

A DIAMOND SINGLE STONE RING

The pear shaped diamond, weighing 1.23 carats, claw set to a tapering hoop with baguette-cut diamond shoulders bordered by brilliant-cut diamonds

£1,000-1,500 US\$1,600-2,300
€1,200-1,700

•118

A DIAMOND ETERNITY RING

Set with a line of baguette-cut diamonds in claw mounts, finger size M

£800-1,200 US\$1,200-1,800
€900-1,300

119

A DIAMOND ETERNITY RING

Composed of a line of baguette diamonds, finger size O1/2

£1,200-1,500 US\$1,900-2,300
€1,400-1,700

120

A DIAMOND ETERNITY RING

Set with a line of baguette diamonds, finger size P1/2

£1,000-1,200 US\$1,600-1,800
€1,200-1,300

121

A CULTURED PEARL AND DIAMOND NECKLACE

The three uniform rows of cultured pearls to an old brilliant-cut diamond set clasp of scrolling ribbon design, shortest row approximately 41.0 cm. long

£600-800 US\$910-1,200
€680-900

•122

A DIAMOND TWO STONE RING

Of crossover design, the two old brilliant-cut diamonds to single-cut diamond curved line shoulders

£600-800 US\$910-1,200
€680-900

123

A PAIR OF DIAMOND EARRINGS

Of domed hoop design, the fronts with brilliant-cut diamond accents, the reverse with openwork heart, crescent, star and moon motifs, post fittings (2)

£500-700 US\$760-1,100
€570-790

124

AN AQUAMARINE BRACELET

Composed of a line of five cut-cornered square aquamarines with scroll divisions, approximately 17.3 cm. long

£1,000-1,500 US\$1,600-2,300
€1,200-1,700

THE PROPERTY OF A NOBLEMAN

Ω125

A SMALL GROUP OF JEWELLERY

Comprising: a pair of gem cufflinks claw-set with cut-cornered rectangular amethyst and blue, yellow and orange zircon single stones, with single clip connections; a diamond and baguette diamond panel fitting of stylised wing design; a single diamond earclip of scroll design with old brilliant-cut diamond two stone drop; and a closed-set rose-cut diamond four stone fragment (5)

£1,000-1,200 US\$1,600-1,800
€1,200-1,300



VARIOUS PROPERTIES

126**A LADY'S WRISTWATCH, BY CARTIER**

The cut-cornered square dial with Roman numerals and two colour stepped bezel, to leather straps with gilt buckle, *mechanical movement 25 mm.*

Dial and movement signed Cartier, case signed Cartier Paris and No. 782100514

£800-1,200

US\$1,200-1,800
€900-1,300

****127****A STAINLESS STEEL AUTOMATIC WRISTWATCH, BY VERSACE**

The circular black dial with Arabic "12", luminous dot hour markers and three subsidiary dials indicating constant seconds, 30 minute and 12 hour registers and date aperture, in brushed effect stainless steel case with two chronograph buttons in the band, the glazed reverse revealing the 37 jewel movement, to maker's alligator straps with maker's stainless steel deployant buckle 40 mm.

Dial, movement and clasp signed Versace, case No. 1891 928943 BLC99

£500-700

US\$760-1,100
€570-790

Please note that this lot will require a CITES licence to leave the EU and will be subject to US Fish and Wildlife restrictions if it is imported into the USA

•128**TWO STAINLESS STEEL WRISTWATCHES, ONE BY CARTIER THE OTHER BY BULGARI**

The first a lady's stainless steel automatic "Santos", the square dial with Roman numerals and sweep centre seconds, the bezel with screw head detail, the back secured by eight screws, to an integral tapering panel bracelet with deployant clasp, *dial and clasp signed Cartier, case signed Cartier Automatique and No. 090113278, 28.5 mm.*; the second a stainless steel quartz "Quadrato" wristwatch, the square black dial with Arabic "6" and "12", baton hour markers and date aperture, to leather straps with maker's stainless steel buckle, *dial, case and buckle signed Bulgari, case No. F 943 SQ 29 SLD, 29 mm.* (2)

£450-550

US\$680-830
€510-620

129**A DIAMOND RING, BY CHAUMET AND A STAINLESS STEEL QUARTZ WRISTWATCH, BY BULGARI**

The ring of waved tapered band design, the sides with pavé diamond detail, *signed Chaumet and No. 184512, with maker's case, pochette and certificate of authenticity dated 30th June 1998*; the watch with circular cream dial with Arabic "6" and "12" and baton hour markers in stainless steel case, the bezel engraved *BULGARI BULGARI*, with maker's buckle, *the case and quartz movement signed Bulgari, case No. 5 BB 33 SLD D 181296, case interior No. 1218, in maker's box 33 mm.* (2)

£700-900

US\$1,100-1,400
€790-1,000

Please note that as the strap for the above watch may be made of endangered or protected animal materials, such as crocodile, it is not sold with the watch but is for display purposes only. Christie's will need to remove and retain the strap before collection by the purchaser.

Ψ•130**AN 18CT. TWO COLOUR GOLD, DIAMOND AND RUBY LIGHTER, BY COLIBRI**

The 18ct. gold lighter of rounded rectangular form in removable 18ct. two colour gold case of reeded curved herringbone design with brilliant-cut diamond and calibre ruby curved line detail, *outer case hallmarked London 1958*

Outer case signed Colibri

£800-1,200

US\$1,200-1,800
€900-1,300

•131**A 18CT. WHITE GOLD QUARTZ WRISTWATCH, BY PIAGET**

The square blue dial with Roman numerals to a plain polished square case, the back secured by eight screws, with maker's 18ct. white gold buckle, *convention hallmarks 30 mm.*

Dial, case and buckle signed Piaget, case No. 50930 824586

£500-700

US\$760-1,100
€570-790

Please note that as the strap for the above watch may be made of endangered or protected animal materials, such as crocodile, it is not sold with the watch but is for display purposes only. Christie's will need to remove and retain the strap before collection by the purchaser.

132**AN ALUMINIUM AND RUBBER AUTOMATIC WRISTWATCH, BY BULGARI**

The silvered matt dial with Arabic "12", baton hour markers, date aperture and three black subsidiary dials for constant seconds, 30 minutes and 12 hour registers, in an aluminium case with rubber bezel engraved *BULGARI BULGARI*, with screw back, screw down crown and two chronograph buttons in the band, to maker's rubber and aluminium bracelet with maker's aluminium buckle 38 mm.

Dial signed Bulgari Aluminium, case back signed Bulgari and No. AC 38 TAL 10936

£500-700

US\$760-1,100
€570-790

133**AN ALUMINIUM AND RUBBER AUTOMATIC WRISTWATCH, BY BULGARI**

The silvered matt dial with Arabic "6" and "12", baton hour markers, sweep centre seconds and date aperture, in aluminium case with rubber bezel engraved *BULGARI BULGARI*, to maker's rubber and aluminium straps with maker's aluminium buckle 38 mm.

Dial signed Bulgari Aluminium, case back signed Bulgari and No. AC 38 TAL 51355

£500-700

US\$760-1,100
€570-790

134**TWO PAIRS OF CUFFLINKS AND A TIE CLIP, BY GEORG JENSEN**

The first pair of cufflinks of reeded square cross section design with chain link connections, *signed Georg Jensen and No. 64*; the second pair of bar design with triple bead detail above and below and chain link connections, *signed Georg Jensen and No. 61B*; the tie clip of rectangular panel design with central floral motif and linear detail, *signed Georg Jensen, with maker's mark GJ and No. 216* (5)

£800-1,200

US\$1,200-1,800
€900-1,300

Φ•135**A 9CT. GOLD WRISTWATCH, BY ROLEX**

The circular white enamel dial with Arabic numerals, subsidiary seconds and luminous hands, in 9ct. gold case by Dennison with reeded bezel and screw back, *the case back with engraved monogram, case hallmarked Birmingham 1922 35.5 mm.*

Dial signed Rolex, movement signed Rolex 15 jewels, case signed Dennison Watch Case Co. Ltd. and No. 241615

£800-1,200

US\$1,200-1,800
€900-1,300

Please note that as the strap for the above watch may be made of endangered or protected animal materials, such as crocodile, it is not sold with the watch but is for display purposes only. Christie's will need to remove and retain the strap before collection by the purchaser.

136**A WRISTWATCH, BY BOUCHERON**

The circular engine turned dial with applied square dot quarters and circular dot hour markers, to a plain polished bezel and later flexible bracelet 29.5 mm.

Dial and movement signed Boucheron, case No. 71.817, case interior No. 4721

£800-1,200

US\$1,200-1,800
€900-1,300



126

127

128

129

130

131

134

132

135

133

136

137

A 9CT. GOLD CIGARETTE CASE

Of rectangular engine turned design, *hallmarked Birmingham 1959, gross weight approximately 188.0 gm., No. L1031, in fitted case by Cartier*

£1,000-1,500

US\$1,600-2,300

€1,200-1,700

138

AN ALUMINIUM AND RUBBER AUTOMATIC WRISTWATCH, BY BULGARI

The silvered matt dial with Arabic "6" and "12", baton hour markers, sweep centre seconds and date aperture, in aluminium case with rubber bezel engraved *BULGARI BULGARI*, to maker's rubber and aluminium straps with maker's aluminium buckle
38 mm.

Dial signed Bulgari Aluminium, case signed Bulgari and No. Al 38 TA L3 1957, buckle signed Bulgari

£800-1,200

US\$1,200-1,800

€900-1,300

139

A CITRINE AND AMETHYST NECKLACE

The central large pear shaped citrine in collet mount to a multi-row faceted amethyst bead necklace, *approximately 45.0 cm. long*

£600-800

US\$910-1,200

€680-900

THE PROPERTY OF A NOBLEMAN

Ω140

A TWO COLOUR GOLD BOX, BY BOUCHERON

Of rectangular form with two colour geometric decoration, reeded sides, one end with striking plate, and two cabochon sapphire thumbpieces for the sectioned lid, opening to reveal two compartments originally for cigarettes and matches, now with two glazed inserts for photograph and hair, *circa 1930, the interior with inscription*

Signed Boucheron Paris London

£1,500-2,000

US\$2,300-3,000

€1,700-2,200

VARIOUS PROPERTIES

Ψ141

A SMALL GROUP OF INDIAN JEWELLERY

Comprising: a broad hinged bangle with engraved floral decoration and foiled cabochon ruby and emerald detail and two pairs of earstuds, the first of circular panel design with raised scrolling floral decoration and bead border detail, the second circular panels with berry detail and foiled cabochon ruby and emerald accents (3)

£700-900

US\$1,100-1,400

€790-1,000

THE PROPERTY OF A NOBLEMAN

•••142

A GROUP OF BOXES AND JEWELLERY

Comprising: an early 19th century silver gilt box of rectangular form with engraved wave decoration, the lid with later applied single-cut diamond monogram *OK*; a late 19th century silver vinaigrette with ray and dot decoration, the front with engraved monogram within a wreath, *maker's mark TH for Thomas Hobbs, hallmarked London 1798*; a late Victorian silver cased shaving brush with waved decoration and cartouche detail, *hallmarked London 1888*; a rounded rectangular engine turned cigarette case, *hallmarked Birmingham 1937*; a single dress button of rose-cut diamond and pearl flaming grenade design, *please note that the pearl has not been tested for natural origin*; a 19th century gilt haircomb with faceted coral, *corallium*, accents; and a propelling pencil with entwined serpent decoration (7)

£400-500

US\$610-750

€450-560

Please note that this lot will be subject to US Fish and Wildlife restrictions if it is to be imported into the USA

VARIOUS PROPERTIES

•143

TWO EARLY 20TH CENTURY SILVER AND ENAMEL VESTA CASES AND TWO SILVER RING BOXES

Comprising: one vesta case of rectangular form, the front enamelled with a horse's head; the second of curved rectangular form, the hinged front with blue and white enamel monogram opening to reveal an enamelled panel depicting a naked lady standing in front of a mirror; and two cut-cornered rectangular silver ring boxes by Birks, *circa 1930, both signed Birks, one with applied plaque with a lion and signed Birks, the other with a similar applied plaque signed Birks Ellis Rylie, both with engraved monograms to the front* (4)

£400-600

US\$610-900

€450-670

•144

A BAND RING AND FOUR RING MOUNTS

Comprising: a band ring, *signed Jess James*; ring mounts - one for a circular stone with diamond gallery and shoulders; one for a rectangular stone; one for three rectangular stones, and a gypsy style mount for a single stone; and a pair clip fittings for earrings

Not illustrated

£280-350

US\$430-530

€320-390



137

138

139

140

141

142

143

Ψ•Ω145

A DIAMOND AND GEM NECKLACE AND BRACELET

The necklace of flexible 'gas pipe' design with central polished panel set with diamonds, rubies and emeralds and a single square-cut sapphire, *approximately 40.0 cm. long*; and a matching bracelet, *approximately 16.0 cm. long* (2)

£500-700

US\$760-1,100

€570-790

Ψ•Ω151

A PAIR OF RUBY AND DIAMOND EARCLIPS

Each of scroll design the baguette diamond graduated triple row with applied collet-set cabochon ruby three stone diagonal detail (2)

£600-800

US\$910-1,200

€680-900

•Ω146

A PAIR OF DIAMOND AND CULTURED PEARL EARPENDANTS

Each composed of a single cultured pearl drop to a diamond and baguette diamond cluster spray with marquise diamond single stone connecting link, *diameter of each cultured pearl approximately 13.0mm, post and clip fittings* (2)

£700-900

US\$1,100-1,400

€790-1,000

Ψ•Ω152

A PAIR OF DIAMOND AND RUBY EARRINGS

Each designed as a stylised folded ribbon with diamond and square-cut ruby chequer board pattern decoration with folding post and clip fittings (2)

£600-800

US\$910-1,200

€680-900

•Ω147

A PAIR OF DIAMOND AND CULTURED PEARL EARPENDANTS AND RING

The earpendants designed as a golden cultured pearl drop with pavé diamond ball articulated surmount to a diamond openwork flowerhead cluster clip; and a matching cultured pearl and diamond cluster ring.

diameter of each cultured pearl approximately 15.2mm, 15.5mm, the ring 16.0mm (3)

£1,000-1,500

US\$1,600-2,300

€1,200-1,700

•Ω153

A PAIR OF DIAMOND AND SAPPHIRE EARRINGS AND RING

The earrings designed as flowerheads with central vari-coloured cushion-cut sapphire cluster with pavé diamond petals, *post and clip fittings*; and a matching diamond and vari-colour heart-shaped sapphire ring with marquise diamond four stone shoulders (3)

£800-1,200

US\$1,200-1,800

€900-1,300

•Ω148

A PAIR OF DIAMOND EARRINGS AND A DIAMOND RING

The earrings of pavé diamond twin lobed shaped crossover design in two colour mount, *post and clip fittings*; and a matching diamond crossover cluster ring (3)

£800-1,200

US\$1,200-1,800

€900-1,300

Ψ•Ω154

A DIAMOND, SAPPHIRE AND RUBY HAIRCOMB

In the form of a textured panel with applied diamond sapphire and ruby collet floral decoration, the stems with textured detail, to wire prongs

£500-700

US\$760-1,100

€570-790

•Ω149

A PAIR OF SAPPHIRE AND DIAMOND EARCLIPS

Each designed as a pavé diamond scroll panel with oval sapphire centre and three stone terminals with baguette diamond divisions (2)

£700-900

US\$1,100-1,400

€790-1,000

•Ω155

A PAIR OF DIAMOND AND COLOURED DIAMOND EARRINGS

Each designed as a brush textured hoop with applied yellow diamond and diamond leaf motif, *post and clip fittings, please note that the yellow diamonds have not been tested for natural colour origin* (2)

£500-700

US\$760-1,100

€570-790

•Ω150

A PAIR OF DIAMOND EARRINGS

Each designed as a pavé diamond domed scroll with baguette diamond line border, *post and clip fittings* (2)

£500-700

US\$760-1,100

€570-790

•Ω156

AN 18CT. GOLD, QUARTZ, DIAMOND BANGLE WATCH BY OMEGA

The circular champagne dial with spear point markers, within diamond bezel, mounted in a broad hinged bangle with pavé diamond heart-shaped domed shoulder motifs, *convention hallmark*

Dial signed Omega De Ville, case signed De Ville and No. 54840289

£500-700

US\$760-1,100

€570-790



157

A PAIR OF MULTI-GEM EARPENDANTS

Each with mixed-cut pear shaped amethyst drop to a suspension composed of a yellow sapphire, an aquamarine and an amethyst flowerhead cluster, each with brilliant-cut diamond accent centre, with cut-cornered rectangular amethyst surmount, clip and post fittings (2)

£1,000-1,500 US\$1,600-2,300
€1,200-1,700

158

A MULTI-GEM NECKLACE

Composed of a series of graduated cut-cornered rectangular amethysts with a yellow sapphire, an aquamarine and an amethyst flowerhead cluster between, each with brilliant-cut diamond accent centre, suspending three mixed-cut pear shaped amethyst single stone drops, the central drop with multiple flowerhead cluster suspension, *approximately 42.0 cm. long, one stone deficient*

£3,500-4,500 US\$5,300-6,800
€4,000-5,100

Ψ159

A PINK SAPPHIRE, DIAMOND AND GEM NECKLACE AND EARPENDANTS

The necklace composed of a central brilliant-cut diamond hexagonal panel with vari-gem cross arms, gems include ruby, sapphire and emerald, to a graduated pink sapphire faceted bead five row necklace and tassel fringe drop, the matching diamond hexagonal panel clasp with oval ruby centre, *approximately 41.0 cm. long*; the matching earpendants with diamond and gem hexagonal panel tops suspending a faceted pink sapphire bead tassel fringe, clip and post fittings (3)

£1,500-2,000 US\$2,300-3,000
€1,700-2,200

160

A KUNZITE AND DIAMOND NECKLACE

The central pendant with pear shaped kunzite drop to a triangular kunzite and diamond cluster surmount and trace link neckchain

£1,000-1,200 US\$1,600-1,800
€1,200-1,300

161

A KUNZITE AND DIAMOND RING

The central circular kunzite with brilliant-cut diamond surround and circular kunzite line shoulders

£800-1,200 US\$1,200-1,800
€900-1,300

162

A KUNZITE AND DIAMOND CLUSTER RING

The fancy-cut cushion shaped kunzite to a diamond border

£1,200-1,500 US\$1,900-2,300
€1,400-1,700

163

A PAIR OF PINK TOURMALINE AND DIAMOND EARPENDANTS

Each drop with pavé diamond half crescent and marquise pink tourmaline to a reeded connection link and pavé diamond openwork pear shaped surmount, clip fittings, *signed G. Bilbault, French mark* (2)

£800-1,200 US\$1,200-1,800
€900-1,300

•164

A PINK BERYL AND DIAMOND RING, BY VAN CLEEF & ARPELS

The cushion shaped pink beryl collet set within a two colour tapering hoop, the chequerboard shoulders with brilliant-cut diamond accents

Signed Van Cleef & Arpels Paris and No. 77453

£400-600 US\$610-900
€450-670

165

AN AMETHYST, DIAMOND AND ENAMEL NECKLACE

The floral carved amethyst drop with applied diamond scroll motif and black enamel cap, to a graduated faceted amethyst bead necklace, *approximately 44.0 cm. long*

£800-1,200 US\$1,200-1,800
€900-1,300

Ψ166

A RUBY AND DIAMOND CLUSTER RING

The central cushion shaped ruby, *weighing 2.46 carats*, in collet mount to a brilliant-cut diamond twin row border and line shoulders

Accompanied by certificate No. BN 17901/HG/08 dated 25th Nov 2008 from the British Gemmological Institute stating that the ruby weighs 2.46 carats and that there was no treatment detected

£6,000-8,000 US\$9,100-12,000
€6,800-9,000

Ψ167

A KUNZITE, DIAMOND AND RUBY BROOCH

The oval mixed-cut kunzite within a textured surround of flowerhead motifs claw set with brilliant-cut diamonds and circular-cut rubies to a beaded outer border

£1,200-1,500 US\$1,900-2,300
€1,400-1,700

Ψ168

A PAIR OF AMETHYST, CULTURED PEARL, DIAMOND AND RUBY EARPENDANTS

Each with faceted drop shaped amethyst to cultured pearl and diamond rondelle surmount, diamond dome and cultured pearl suspension and cabochon ruby top, post fittings (2)

£700-900 US\$1,100-1,400
€790-1,000

169

A PAIR OF PERIDOT, TOURMALINE AND DIAMOND EARPENDANTS

Set with either a pink tourmaline or peridot and diamond oval cluster drop to diamond single stone suspension, to an opposed peridot or pink tourmaline and diamond cluster top, post fittings (2)

£600-800 US\$910-1,200
€680-900



170 A PAIR OF SAPPHIRE AND DIAMOND EARRINGS Comprising four lines of baguette diamonds to oval sapphire terminals, clip and post fittings £500-700 US\$760-1,100 €570-790	•178 A PAIR OF CULTURED PEARL, SAPPHIRE AND DIAMOND EARCLIPS Each suspending a drop shaped cultured pearl to a pavé set stylised floral surmount with triple oval sapphire accents, clip fittings (2) £800-1,000 US\$1,200-1,500 €900-1,100
Ω171 A DIAMOND PENDANT The brilliant-cut diamond in four claw mount to a fine chain £1,000-1,500 US\$1,600-2,300 €1,200-1,700	179 A PAIR OF SAPPHIRE AND DIAMOND CLUSTER EARSTUDS Each designed as an oval collet-set sapphire with brilliant-cut diamond surround (2) £800-1,200 US\$1,200-1,800 €900-1,300
172 A SAPPHIRE AND DIAMOND PENDANT The front set with an oval sapphire to six stone brilliant-cut diamond collet detail and fine chain £1,000-1,200 US\$1,600-1,800 €1,200-1,300	180 A PAIR OF IOLITE AND DIAMOND EARRINGS Each suspending a pear shaped cabochon iolite within a diamond surround to diamond set loop suspensions and cabochon iolite and diamond surmount, post fittings (2) £1,200-1,500 US\$1,900-2,300 €1,400-1,700
173 AN EDWARDIAN SAPPHIRE AND DIAMOND BROOCH Modelled as a horseshoe with oval sapphires to old brilliant-cut diamond two stone spacers, <i>circa 1900</i> £800-1,200 US\$1,200-1,800 €900-1,300	181 A DIAMOND AND SAPPHIRE CLUSTER RING The brilliant-cut diamond, <i>weighing 1.01 carats</i> , in claw mount to a pear shaped sapphire concave cluster surround £700-900 US\$1,100-1,400 €790-1,000
174 A PAIR OF DIAMOND SINGLE STONE EARSTUDS Each brilliant-cut diamond in collet mount (2) £3,000-4,000 US\$4,600-6,000 €3,400-4,500	•182 A DIAMOND AND EMERALD RING The old brilliant-cut diamond in square mount to diamond set pierced shoulders and crescent emerald detail £800-1,200 US\$1,200-1,800 €900-1,300
175 A PAIR OF SAPPHIRE AND DIAMOND EARRINGS Each designed as a single leaf set with oval sapphires to a brilliant-cut diamond border, post and clip fittings (2) £1,200-1,400 US\$1,900-2,100 €1,400-1,600	183 A SAPPHIRE AND DIAMOND CLUSTER RING The central cushion shaped sapphire within a border of brilliant-cut diamonds to tapered diamond corners £800-1,200 US\$1,200-1,800 €900-1,300
176 A DIAMOND BRACELET Comprising a graduated line of articulated panels, each set with a central brilliant-cut diamond to a baguette and brilliant-cut diamond cross detail cluster surround, <i>approximately 18.5 cm. long</i> £3,000-4,000 US\$4,600-6,000 €3,400-4,500	•177 A DIAMOND LINE BRACELET Composed of a line of channel set baguette diamonds, <i>approximately 18.0 cm. long</i> £800-1,200 US\$1,200-1,800 €900-1,300
	184 A SAPPHIRE AND DIAMOND CLUSTER RING The central oval sapphire to a brilliant-cut diamond surround £1,200-1,500 US\$1,900-2,300 €1,400-1,700



185

A DIAMOND, PINK SAPPHIRE AND EMERALD BROOCH

Modelled as a toucan with pavé pink sapphire body, pavé diamond head with emerald eye and baguette emerald twin line tail

£1,200-1,800 US\$1,900-2,700
€1,400-2,000

Ψ191

A DIAMOND, RUBY AND EMERALD RING AND EARRINGS

Each of flowerhead design, the ruby stamen to pavé diamond petals with emerald accents, the earrings with clip and post fittings (3)

£500-700 US\$760-1,100
€570-790

186

AN AMETHYST AND DIAMOND CLUSTER RING

The circular amethyst to a brilliant-cut diamond wave design surround

£500-700 US\$760-1,100
€570-790

192

TWO DIAMOND AND GEM RINGS

Comprising: one modelled as a turtle with free form fire opal body to brown diamond head and legs, *please note that the brown diamonds have not been tested for natural colour origin*; the second of abstract figure-of-eight design, one loop tiger's eye, the other brilliant-cut diamonds, to reeded shoulders (2)

£500-700 US\$760-1,100
€570-790

•••187

A ENAMEL AND GEM SET NOVELTY BROOCH, BY VAN CLEEF & ARPELS

Modelled as a panther with black enamel spots, emerald eyes and coral, *ovallium*, nose

Signed VCA (c) 66 and No. B9708

£600-800 US\$910-1,200
€680-900

Please note that this lot will be subject to US Fish and Wildlife restrictions if it is to be imported into the USA

193

AN EMERALD AND DIAMOND RING

Of abstract floral design, the two oval cabochon emerald buds with pavé diamond petals and brilliant-cut diamond accents

£1,800-2,200 US\$2,800-3,300
€2,100-2,500

188

A DIAMOND AND COLOURED DIAMOND RING

Modelled as a lily with pavé diamond petals and pavé yellow diamond articulated stamen, *please note that the yellow diamonds have not been tested for natural colour origin*

£2,800-3,500 US\$4,300-5,300
€3,200-3,900

194

A DIAMOND AND COLOURED DIAMOND RING, BY SAVRANSKY

Claw set with an oval-cut brown diamond, *weighing 2.01 carats* to a raised pavé set diamond mount with yellow diamond heart shaped cluster to each shoulder, *please note that the brown and yellow diamonds have not been tested for natural colour origin*

Signed Savransky

£800-1,200 US\$1,200-1,800
€900-1,300

•189

A DIAMOND BROOCH

Modelled as a rose, the entremblant stamen with brilliant-cut diamond terminals, to mesh petals, the stem with textured leaves

£800-1,200 US\$1,200-1,800
€900-1,300

Ψ190

A SAPPHIRE AND DIAMOND BUTTERFLY BROOCH

The central pavé diamond body with ruby eyes and diamond set antennae, each pavé diamond wing with a single collet-set sapphire

£800-1,000 US\$1,200-1,500
€900-1,100

195

A PAIR OF DIAMOND AND MULTI-GEM SCROLL EARPENDANTS

Composed of pear shaped citrine drops with diamond surround to brilliant-cut diamond cascading, scrolling branch suspensions set with vari-coloured gem leaf and flower detail gems include sapphire and pink sapphire, with oval citrine surmount, post fittings (2)

£2,500-3,000 US\$3,800-4,500
€2,900-3,400



185



186



187



189



190



188



193



194



192



191



195



196

A AQUAMARINE AND DIAMOND PENDANT NECKLACE

Designed as a pear-shaped aquamarine with diamond twin line flared surmount to a diamond six stone and trace-link neckchain

£1,000-1,200 US\$1,600-1,800
€1,200-1,300

197

A DIAMOND CLUSTER RING AND A PAIR OF AQUAMARINE AND DIAMOND EARPENDANTS

The ring of brilliant-cut diamond circular cluster design, the single stone centre with twin row border; the earpendants with pear shaped aquamarine drop, knife edge bar suspensions and old brilliant-cut diamond single stone tops, post fittings (3)

£600-800 US\$910-1,200
€680-900

**198

A DIAMOND AND CONCH PEARL NECKLACE

Designed as diamond twin foliate swags centred on a bow motif suspending a single conch pearl with diamond single stone surmount to a matching diamond foliate suspension and fine link neckchain, approximately 42.0 cm. long

£2,200-2,500 US\$3,400-3,800
€2,500-2,800

Please note that this lot will be subject to US Fish and Wildlife restrictions if it is to be imported into the USA

199

A FRENCH ART DECO OPAL, ONYX AND DIAMOND PENDANT NECKLACE

The single pear shaped black opal drop with alternately-set calibré onyx and rose-cut diamond border with old brilliant-cut diamond collet articulated connecting link to a neckchain, circa 1930, French marks

£2,000-3,000 US\$3,100-4,500
€2,300-3,400

200

A DIAMOND PENDANT NECKLACE

The stylised heart shaped openwork pendant channel set with a graduated line of brilliant-cut diamonds with central pear-cut diamond, to a fancy trace-link neckchain, in case stamped Boodle & Dunthorne

£1,000-1,200 US\$1,600-1,800
€1,200-1,300

Ψ201

AN OPAL AND DIAMOND SNAIL BROOCH

With opal-set coiled shell with diamond detail, the body pavé-set with old-brilliant-cut diamonds, diamond and ruby eyes

£1,500-2,000 US\$2,300-3,000
€1,700-2,200

202

A DIAMOND CRESCENT BROOCH AND A PAIR OF DIAMOND EARRINGS

The brooch composed of a series of graduated brilliant-cut diamonds; and a pair of diamond line hoop earrings (3)

£800-1,200 US\$1,200-1,800
€900-1,300

203

A CULTURED PEARL AND DIAMOND NECKLACE

The uniform double row of treated black cultured pearls to a pavé diamond cluster bow clasp with central baguette diamond band, with alternate, cultured pearl rectangular clasp, approximately 34.0 cm. long

£800-1,200 US\$1,200-1,800
€900-1,300

204

A PAIR OF DIAMOND EARPENDANTS

Each designed as a pavé diamond crescent-shaped hoop with diamond line articulated suspension loop (2)

£1,600-2,000 US\$2,500-3,000
€1,800-2,200

205

A DIAMOND AND COLOURED DIAMOND FLEXIBLE BRACELET

Of openwork design composed of a series of alternate collet-set diamond and black diamond four stone cluster panels, approximately 18.0 cm. long, please note that the black diamonds have not been tested for natural colour origin

£2,000-2,500 US\$3,100-3,800
€2,300-2,800

206

A DIAMOND BANGLE

Of hinged half-hoop design, the front section composed of a series of diamond and baguette diamond cross over lines forming a woven pattern to a rectangular section back

£2,600-3,000 US\$4,000-4,500
€3,000-3,400

207

A PLATINUM AND DIAMOND BANGLE, BY BOODLE AND DUNTHORNE

Of hinged half-hoop design, the front section with a line of channel-set brilliant-cut diamonds, hallmarked London 1989 with inscription dated 1989, with maker's box

Signed B&D and engraved Boodles, 1989
£1,000-1,200 US\$1,600-1,800
€1,200-1,300

208

A DIAMOND ETERNITY RING

Set with a single line of baguette diamonds in plain polished hoop, finger size - L1/2

£600-800 US\$910-1,200
€680-900

•209

A DIAMOND FLEXIBLE BRACELET

Of articulated design composed of a single line of baguette diamonds, approximately 18.0 cm. long

£500-700 US\$760-1,100
€570-790

210

A PAIR OF AQUAMARINE, DIAMOND AND TANZANITE EARPENDANTS

The pear shaped aquamarine drops with tanzanite and diamond borders, to diamond three stone flexible line suspension and pear shaped aquamarine tops, post fittings (2)

£1,000-1,500 US\$1,600-2,300
€1,200-1,700



196

197

198

199

201

200

202

204

203

205

207

206

208

209

210

211

A PEARL AND DIAMOND NECKLACE

Suspending four natural pearls of varying sizes within brilliant-cut diamond cluster surrounds with diamond single stone collets, to a fine chain

Accompanied by report No. 0902/25, dated 21/2/09 from Gwilym M Jones FGA DGA stating that the pearls were found to be natural

£2,500-3,000 US\$3,800-4,500
€2,900-3,400

212

A PAIR OF DIAMOND EARPENDANTS

The swag suspension with central drop, to a three stone cluster surmount, set throughout with old brilliant and single-cut diamonds, hook fittings (2)

£3,500-4,000 US\$5,300-6,000
€4,000-4,500

213

A VARI-COLOURED SAPPHIRE NOVELTY BROOCH

Modelled as a bird with vari-coloured oval sapphire body and single-cut diamond set head, wing and feet

£1,000-1,200 US\$1,600-1,800
€1,200-1,300

Ψ214

A DIAMOND AND RUBY FLOWER BROOCH

The central cushion shaped diamond to a diamond collet surround and cabochon ruby stamen border, the wide petals set with old brilliant-cut diamonds

£1,500-2,000 US\$2,300-3,000
€1,700-2,200

Ψ215

A GEM AND DIAMOND RING

The central grey cultured pearl to cabochon opal single stone shoulders with cushion shaped single stone ruby and emerald terminals within an openwork mount and old brilliant-cut diamond border, *finger size H*

£2,000-2,500 US\$3,100-3,800
€2,300-2,800

216

A DIAMOND FLOWER BROOCH

The openwork flowerhead set with old brilliant-cut diamonds

£4,000-5,000 US\$6,100-7,500
€4,500-5,600

217

A LATE 19TH CENTURY CHRYSOBERYL AND DIAMOND BRACELET

The front set with graduated oval chrysoberyls with old brilliant-cut diamond two stone spacers, *circa 1890, to a later expanding bracelet*

£500-700 US\$760-1,100
€570-790

218

A WILLIAM IV LOCKET AND A VICTORIAN BROOCH

The oval glazed locket containing hair, *the reverse with inscription attributed to Lord and Lady Clayton, dated 1833 and 1834*; the brooch modelled as a star with old brilliant-cut diamond centre to six rose-cut diamond rays and single stone accents, *circa 1890* (2)

£600-800 US\$910-1,200
€680-900

Ψ219

A GROUP OF JEWELLERY

Including: a Georgian mourning locket pendant with glazed sepia miniature depicting two mourners beside an obelisk monument, *the reverse with inscription dated 22nd February 1787*; an Austro Hungarian brooch with cabochon garnet centre and cabochon turquoise accents; an onyx cross pendant with applied rose-cut diamond cross detail; a late 19th/early 20th century circular reverse painted rock crystal intaglio brooch depicting a horse's head; a stickpin modelled as a rapier with calibré ruby handle and diamond collet detail, *cased*; a brooch modelled as a pickaxe with coiled detail and pearl set flower accent, *cased*; and a calibré emerald and rose-cut diamond set geometric shaped pendant, suspending two pearls, *one emerald deficient; please note that the pearls have not been tested for natural origin* (7)

£1,200-1,500 US\$1,900-2,300
€1,400-1,700

220

A LATE 19TH CENTURY, PEARL AND DIAMOND BRACELET

The front of openwork lozenge shape set with rose-cut diamonds, four pearl accents and diamond collet and linear detail, *circa 1890, to a later diamond collet bracelet, approximately 17.0 cm. long, one diamond deficient, please note that the pearls have not been tested for natural origin*

£1,700-2,000 US\$2,600-3,000
€2,000-2,200

Ψ221

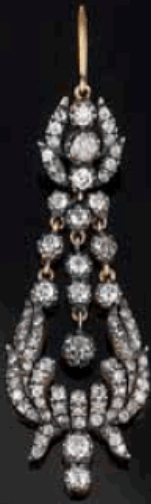
A GROUP OF TEN STICKPINS

Including: a late 19th/early 20th century reverse painted rock crystal intaglio depicting a dog's head; a ruby and diamond set horseshoe with interlaced whip; a triangular-cut single stone diamond; a late 19th century diamond set duck in flight; a spider with a tiger's eye abdomen; a horse's head; a late 19th century rose-cut diamond key; a baguette diamond house with emerald tree; and two ruby and diamond set pins (10)

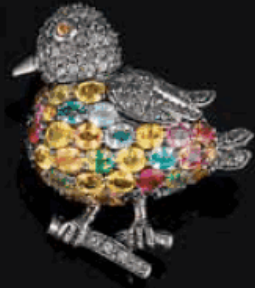
£2,000-3,000 US\$3,100-4,500
€2,300-3,400



211



212



213



214



215



11



216



217



220



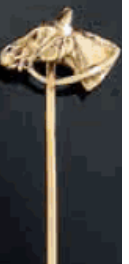
218



219



221



222

A DIAMOND THREE STONE RING

The three old brilliant-cut diamonds in claw mounts, *centre stone weighing approximately 1.20 carats*

£1,500-2,000 US\$2,300-3,000
€1,700-2,200

223

A PAIR OF DIAMOND EARSTUDS

Each with single brilliant-cut diamond in claw mount to a brilliant-cut diamond border (2)

£5,000-6,000 US\$7,600-9,000
€5,700-6,700

•224

A CULTURED PEARL NECKLACE

The single row of cultured pearls, *graduating from approximately 12.4 to 10.0 mm.*, to a spherical clasp with diamond accents, *approximately 42.5 cm. long*

£500-700 US\$760-1,100
€570-790

225

A GARNET AND DIAMOND RING

The square cushion shaped garnet to square-cut diamond three stone shoulders, in 18ct. white gold mount, *London hallmark*

£800-1,000 US\$1,200-1,500
€900-1,100

226

A PAIR OF DIAMOND EARPENDANTS

Each composed of pavé diamond scroll tops with brilliant-cut diamond curved line detail suspending a fringe of brilliant-cut diamond collet and marquise diamond flexible line drops, clip and post fittings (2)

£6,500-7,500 US\$9,800-11,000
€7,300-8,400

227

A DIAMOND, PEARL, CULTURED PEARL AND IMITATION STONE CHOKER NECKLACE

Composed of multi-rows of seed pearls with brilliant-cut diamond bar and tapered openwork panel spacers, to cultured pearl single row borders set at intervals with diamond rondelles and diamond and imitation stone shaped panel clasp, the three principal collets set with imitation colourless stones, *approximately 35.0 cm. long, please note that the pearls have not been tested for natural origin*

£3,500-5,000 US\$5,300-7,500
€4,000-5,600

228

FIVE DIAMOND BRACELETS

Each composed of a line of brilliant-cut diamond collets, *four mounted in 18ct. white gold, London hallmarks, measuring approximately 17.7 cm., 18.0 cm.(3) and 18.5 cm. long respectively* (5)

£1,000-1,500 US\$1,600-2,300
€1,200-1,700

229

A DIAMOND PENDENT NECKLACE

The pendent drop composed of a series of four pear shaped diamond and diamond clusters, to a trace link neckchain

£1,800-2,200 US\$2,800-3,300
€2,100-2,500

230

A PAIR OF DIAMOND HOOP EARRINGS

The hinged hoops set to the front and the rear interior with a line of brilliant-cut diamonds, post fittings (2)

£1,200-1,500 US\$1,900-2,300
€1,400-1,700

Ψ231

A RUBY AND DIAMOND BAND RING

Composed of twin lines of calibré rubies with brilliant-cut diamond line borders, *finger size M*

£1,000-1,500 US\$1,600-2,300
€1,200-1,700

Ψ232

TWO PLATINUM AND GEM ETERNITY RINGS

One calibré ruby, the other sapphire, each with engraved mounts, *both circa 1925, finger sizes ruby K, sapphire J 1/2* (2)

£500-700 US\$760-1,100
€570-790

•233

A MULTI-HOOP RING

Composed of fifteen entwined hoops

£400-500 US\$610-750
€450-560



Ψ234

A GEMSET CHARM BRACELET

The fancy link chain suspending various charms including: a diamond set frog with emerald eyes; a boat with diamond sails and sapphire detail; a diamond umbrella; a diamond openwork twin heart; a diamond squirrel with ruby eye; a diamond cat with pink sapphire eye; and a cockerel with ruby eye, *approximately 18.5 cm. long*

£2,200-2,400

US\$3,400-3,600

€2,500-2,700

235

A PAIR OF ONYX AND DIAMOND EARPENDANTS

Of geometric drop shaped design with central onyx within brilliant-cut diamond surround to single stone diamond collet surmount (2)

£1,300-1,600

US\$2,000-2,400

€1,500-1,800

236

A DIAMOND RING

The central rectangular-cut diamond, *weighing approximately 1.40 carats*, to diamond two stone step shoulders

£2,000-3,000

US\$3,100-4,500

€2,300-3,400

THE PROPERTY OF A NOBLEMAN

Ω237

AN ART DECO DIAMOND PENDANT

Suspending three graduated drops from an openwork crescent shaped surmount with baguette diamond line detail and old brilliant-cut diamond collet accents, *circa 1935*

£1,800-2,200

US\$2,800-3,300

€2,100-2,500

VARIOUS PROPERTIES

238

A PAIR OF DIAMOND EARSTUDS

Each single stone brilliant-cut diamond in claw mount, post fittings (2)

£3,000-4,000

US\$4,600-6,000

€3,400-4,500

239

A DIAMOND CLUSTER RING

The central old brilliant-cut diamond collet within an openwork cluster surround to single-cut diamond two stone shoulders

£2,400-2,800

US\$3,700-4,200

€2,700-3,100

240

A DIAMOND CLIP BROOCH

Of geometric openwork design set with brilliant-cut diamonds

£1,200-1,500

US\$1,900-2,300

€1,400-1,700

Ψ•241

A DIAMOND THREE STONE RING

Of panel design, the three old brilliant-cut diamonds to an openwork border with calibr e ruby detail and shoulders, mounted in platinum, *hallmarked London 1980*

£600-800

US\$910-1,200

€680-900

Ψ242

A GROUP OF GEMSET NOVELTY STICKPINS

Comprising seven characters including a cowboy, a swordsman and a lady with umbrella, each with cabochon ruby, sapphire or emerald stomach and detail, *spurious marks* (7)

£3,000-5,000

US\$4,600-7,500

€3,400-5,600

243

AN ART DECO DIAMOND BRACELET

Composed of a series of geometric shaped panels set throughout with old brilliant and single-cut diamonds, the front set with three old brilliant-cut diamond collet accents, *approximately 16.5 cm. long*

£1,800-2,500

US\$2,800-3,800

€2,100-2,800

END OF SALE



234



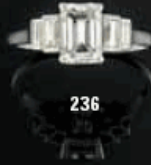
235



237



238



236



243



241



240



239



242

IMPORTANT NOTICES

IMPORTANT NOTICES

CHRISTIE'S INTEREST IN PROPERTY CONSIGNED FOR AUCTION

From time to time, Christie's may offer a lot which it owns in whole or in part. Such property is identified in the catalogue with the symbol Δ next to its lot number.

On occasion, Christie's has a direct financial interest in lots consigned for sale, which may include guaranteeing a minimum price or making an advance to the consignor that is secured solely by consigned property. Such property is identified in the catalogue with the symbol \circ next to the lot number. This symbol will be used both in cases where Christie's holds the financial interest on its own, and in cases where Christie's has financed all or part of such interest through third parties.

When a third party agrees to finance all or part of Christie's interest in a lot, it takes on all or part of the risk of the lot not being sold, and will be remunerated in exchange for accepting this risk.

The third party may also bid for the lot. Where it does so, and is the successful bidder, the remuneration may be netted against the final purchase price. If the lot is not sold, the third party may incur a loss. Where Christie's has an ownership or financial interest in every lot in the catalogue, Christie's will not designate each lot with a symbol, but will state its interest at the front of the catalogue."

ALL DIMENSIONS ARE APPROXIMATE CONDITION

Christie's catalogues include references to condition only in descriptions of multiple works (such as prints, books and wine). For all other property, only alterations or replacement components are listed.

Please contact the Specialist Department for a condition report on a particular lot. The nature of the lots sold in our auctions is such that they will rarely be in perfect condition, and are likely, due to their nature and age, to show signs of wear and tear, damage, other imperfections, restoration or repair.

Any reference to condition in a catalogue entry will not amount to a full description of condition.

Condition reports are usually available on request, and will supplement the catalogue description.

In describing lots, our staff assess the condition in a manner appropriate to the estimated value of the item and the nature of the auction in which it is included.

Any statement as to the physical nature or condition of a lot, in a catalogue, condition report or otherwise, is given honestly and with appropriate care. However, Christie's staff are not professional restorers or trained conservators and accordingly any such statement will not be exhaustive. We therefore recommend that you always view property personally, and, particularly in the case of any items of significant value, that you instruct your own restorer or other professional adviser to report to you in advance of bidding.

PROPERTY INCORPORATING MATERIALS FROM ENDANGERED SPECIES

An export licence issued by the Department of the Environment will be required for the export of any item made of or incorporating (irrespective of percentage) animal material such as ivory, whalebone, tortoiseshell, rhinoceros horn, Rosewood and Lignum Vitae etc., and this may take up to eight weeks to obtain. Clients are advised to check with the regulating body in the country of importation regarding any possible restrictions on the importation of items within this category – some countries have an absolute ban on the importation of certain materials. For example, the U.S. generally prohibits the importation of articles containing species that it has designated as endangered or threatened if those articles are less than 100 years of age.

3/9/08

EXPLANATION OF SYMBOLS

- Lots offered without a reserve are denoted by this symbol as well as the title in red.
- Ω Import VAT is payable at 15% on the hammer price and VAT is payable at 15% on the buyer's premium on a VAT inclusive basis. These lots have been imported from outside the EU for sale, using the Temporary Importation procedure.
- † VAT is charged at 15% on both the hammer price and premium.
- * Import VAT is payable at 5.001 % on the hammer price and VAT is payable at 15 % on the buyer's premium on a VAT inclusive basis. These lots have been imported from outside the EU for sale, using the Temporary Importation procedure.
- α The VAT treatment of the lot is determined by the registered address of the purchaser
 - Buyers from within the EU:
 - VAT payable at 15% on just the buyer's premium (NOT the hammer price)
 - Buyer's from outside the EU:
 - VAT payable at 15% on hammer price and buyer's premium.
- Φ Restrictions on Rolex watch brand when being imported to the USA
- λ Artist's resale right.
- Δ or \circ Christie's interest in property consigned for auction.
- ** Import restrictions may apply or a CITES Licence might be required as this lot contains material from endangered species.
- Ψ Items which contain rubies or jadeite originating in Burma (Myanmar) may not be imported into the U.S.

Please refer to Important Notices and Buying at Christie's in the back of the catalogue for further detailed information.

EXPLANATION OF CATALOGUING PRACTICE

FOR JEWELLERY

Terms used in this catalogue have the meanings ascribed to them below. Please note that all statements in this catalogue as to Authorship are made subject to the provisions of the **CONDITIONS OF SALE and LIMITED WARRANTY.**

Jewellers in the Title

1. By Boucheron

When maker's name appears in the title, in Christie's qualified opinion it is by that maker.

Jewellers beneath the description

2. Signed Boucheron

Has signature which in Christie's qualified opinion is authentic.

3. With maker's mark for Boucheron

Has a mark denoting a maker which in Christie's qualified opinion is authentic.

4. By Boucheron

In Christie's qualified opinion the object is by the jeweller although unsigned.

5. Mounted by Boucheron

In Christie's qualified opinion the setting has been created by the jeweller using stones originally supplied by the jeweller's client.

6. Mount only by Boucheron

In Christie's qualified opinion the mounting is by the jeweller, but either the gemstones have been replaced or the piece has been altered in some way after its manufacture.

Periods

1. Antique

Over 100 years old

2. Art Nouveau

1895-1910

3. Belle Epoque

1895-1914

4. Art Deco

1915-1935

5. Retro

1940s

NOTICE REGARDING BURMESE STONES

Items which are made of, or contain, rubies or jadeite originating in Burma (Myanmar) may not be imported into the U.S. As a convenience to our bidders, lots which contain rubies or jadeite of Burmese origin or of indeterminate origin have been marked with Ψ . Please be advised that a purchaser's inability to import any such item into the U.S. or any other country shall not constitute grounds for nonpayment or cancellation of the sale.

Please note that with respect to items that contain any other types of gemstones originating in Burma (e.g., sapphires), such items may be imported into the U.S., provided that the gemstones have been mounted or incorporated into jewellery outside of Burma and provided that the setting is not of a temporary nature (e.g., a string).

REGARDING COLOURED STONES

Prospective buyers are reminded that many coloured gemstones have historically been treated to enhance their appearance. Certain enhancement methods, such as heating, are commonly used to improve both colour or transparency, particularly in rubies and sapphires. Other methods, such as oiling, enhance the clarity of emeralds. These methods have been generally accepted by the international jewellery trade. Although heat enhancement of colour is widely believed to be permanent, it may have some impact on the durability of the gemstone and special care of the stone may be required over time. For example, gemstones which have been oiled may require re-oiling after a period of years to retain their maximum appearance.

It is Christie's policy to obtain gemmological reports from internationally recognised gemmological laboratories describing certain gemstones sold by Christie's. The availability of such reports will be disclosed in the catalogue. Reports from American gemmological laboratories used by Christie's will disclose any heat enhancement or treatment. European gemmological laboratory reports will disclose heat enhancement only if specifically requested but will confirm when no heat enhancement or treatment has been made. Because of variations in approach and technology there may not be consensus among laboratories as to whether any particular gemstone has been treated, the extent of treatment and whether treatment is permanent.

It is not feasible for Christie's to obtain a gemmological report for each gemstone offered by Christie's. Prospective buyers should be aware that all gemstones may have been enhanced by some method. For further details, prospective buyers in the United States are referred to the information chart prepared by the Gemstones Standards Commission, available in the viewing area. Prospective buyers may request laboratory reports for any uncertified item if requests are made at least three weeks before the scheduled date of auction. This service is subject to prepayment by the requesting party.

Because enhancement affects market value, Christie's estimates will reflect the information disclosed in a report or, if no report is available, the assumption that gemstones may have been enhanced.

Condition reports are usually available for all lots upon request and Christie's specialists will be happy to answer any questions.

REGARDING IMPORTATION OF WATCHES INTO THE US

Prospective buyers should be aware that the importation of luxury watches such as Rolex into the United States is highly restricted. These watches may not be shipped into the USA and can only be imported personally. Generally, a buyer may import only one watch into the USA. In this catalogue, these watches have been marked with a Φ .

It is the buyer's responsibility to determine whether there are any import restrictions and to comply with such restrictions. The failure by Christie's to mark a lot with a Φ shall not constitute grounds to rescind or cancel a sale.

For further information, please contact our specialists in charge of the sale.

TO PROSPECTIVE BUYERS OF CLOCKS AND WATCHES

The description of the condition of clocks and watches in this catalogue, including references to defects and repairs, is provided as a service to prospective buyers, but such description is not necessarily complete. While Christie's will furnish a condition report on any lot to a prospective purchaser upon request, any such report may also be incomplete and may not specify all mechanical replacements or defects. Accordingly, all clocks and watches should be viewed personally by prospective buyers to evaluate the condition of the property offered for sale. All lots are sold "as is," and the absence of any reference to the condition of a clock or watch does not imply that the lot is in good condition and without defects, repairs or restorations. Virtually all clocks and watches have been repaired in the course of their normal useful lifetime and may now incorporate parts not original to them. Furthermore, Christie's makes no representation or warranty that any clock or watch is in working order.

Watches are not always illustrated life size, buyers should refer to the catalogue description for the dimensions of each watch.

It should be noted that most wristwatches with water-resistant cases have been opened to identify type and quality of movement. It cannot be assumed that the watches are still waterproof and purchasers are advised to have the watches checked by a competent watch-maker before use.

Please note that gold of less than 18ct. does not qualify in all countries as 'gold' and may be refused import. Christie's cannot accept liability if import is refused. Please note that all Rolex watches in the Christie's sale catalogue are sold as viewed and that Christie's cannot guarantee the authenticity of any individual component part of these Rolex watches. The bracelets described as "associated" are not part of the original piece and may not be authentic.

Prospective buyers should satisfy themselves by personal inspection as to the condition of each Lot. Condition reports can be requested from Christie's and are given 'without prejudice' in accordance with the terms of the conditions of sale and limited warranty printed in the back of the catalogue.

Nevertheless, such reports are for general guidance only and will not specify all mechanical replacements or imperfections. Such reports will, of necessity, be subjective. Buyers are advised that certificates are not available unless otherwise stated. As collectors' watches often contain extremely fine and complex mechanisms, buyers should be aware that a general service, change of battery or further repair work, for which the buyer is solely responsible, may be necessary.

BUYING AT CHRISTIE'S

CONDITIONS OF SALE

Conditions of Sale and Limited Warranty are set out later in this catalogue. Bidders are strongly encouraged to read these as they set out the terms on which property is bought at auction.

ESTIMATES

Based upon prices recently paid at auction for comparable property, and take into account condition, rarity, quality and provenance. Estimates are subject to revision. Buyers should not rely upon estimates as a representation or prediction of actual selling prices. Estimates do not include the buyer's premium or VAT. Where "Estimate on Request" appears, please contact the Specialist Department for further information.

RESERVES

The reserve is the confidential minimum price the consignee will accept and will not exceed the low pre-sale estimate. Lots that are not subject to a reserve are identified by the symbol * next to the lot number.

BUYER'S PREMIUM

Christie's charges a premium to the buyer on the final bid price of each lot sold at the following rates: 25% of the final bid price of each lot up to and including £25,000, 20% of the excess of the hammer price above £25,000 and up to and including £500,000 and 12% of the excess of the hammer price above £500,000. Exceptions: Wine and Cigars: 15% of the final bid price of each lot. For all lots, VAT is payable on the premium at the applicable rate.

PRE-AUCTION VIEWING

Pre-auction viewings are open to the public free of charge. Christie's specialists are available to give advice and condition reports at viewings or by appointment.

BIDDER REGISTRATION

Prospective buyers who have not previously bid or consigned with Christie's should bring:

- * Individuals: government-issued photo identification (such as a driving licence, national identity card, or passport) and, if not shown on the ID document, proof of current address, for example a utility bill or bank statement.
 - * Corporate clients: a certificate of incorporation.
 - * For other business structures such as trusts, offshore companies or partnerships, please contact Christie's Credit Department at +44 (0)20 7752 3137 for advice on the information you should supply.
 - * Persons registering to bid on behalf of someone who has not previously bid or consigned with Christie's should bring identification documents not only for themselves but also for the party on whose behalf they are bidding, together with a signed letter of authorisation from that party.
- To allow sufficient time to process the information, new clients are encouraged to register at least 48 hours in advance of a sale.

Prospective buyers should register for a numbered bidding paddle at least 30 minutes before the auction. New clients, clients who have not made a purchase from any Christie's office within the last two years, and those wishing to spend more than on previous occasions, may be asked to supply a bank reference. For assistance with references, please contact Christie's Credit Department at +44 (0)20 7389 2862 (London, King Street) or at +44 (0)20 7752 3137 (London, South Kensington).

REGISTERING TO BID ON SOMEONE ELSE'S BEHALF

Persons bidding on behalf of an existing client should bring a signed letter from the client authorising the bidder to act on the client's behalf. Please note that Christie's does not accept payments from third parties. Christie's can only accept payment from the client, and not from the person bidding on their behalf.

BIDDING

The auctioneer accepts bids from those present in the saleroom, from telephone bidders, or by absentee written bids left with Christie's in advance of the auction. The auctioneer may also execute bids on behalf of the seller up to the amount of the reserve. The auctioneer will not specifically identify bids placed on behalf of the seller. Under no circumstances will the auctioneer place any bid on behalf of the seller at or above the reserve. Bid steps are shown on the Absentee Bid Form at the back of this catalogue.

ABSENTEE BIDS

Absentee bids are written instructions from prospective buyers directing Christie's to bid on their behalf up to a maximum amount specified for each lot. Christie's staff will attempt to execute an absentee bid at the lowest possible price taking into account the reserve price. Absentee bids submitted on "no reserve" lots will, in the absence of a higher bid, be executed at approximately 50% of the low pre sale estimate or at the amount of the bid if it is less than 50% of the low pre-sale estimate. The auctioneer may execute absentee bids directly from the rostrum, clearly identifying these as "absentee bids", "book bids", "order bids" or "commission bids". Absentee Bid Forms are available in this catalogue, at any Christie's location, or online at christies.com.

TELEPHONE BIDS

Telephone bids cannot be accepted for lots estimated below £2,000. Arrangements must be confirmed with the Bid

Department at least 24 hours prior to the auction at +44 (0)20 7389 2658 (London, King Street) or +44 (0)20 7752 3111 (London, South Kensington). Arrangements to bid in languages other than English must be made well in advance of the sale date.

Telephone bids may be recorded. By bidding on the telephone, prospective purchasers consent to the recording of their conversation.

SUCCESSFUL BIDS

Christie's South Kensington is not able to notify successful bidders by telephone. While Invoices are sent out by mail after the auction we do not accept responsibility for notifying you of the result of your bid. Buyers are requested to contact us by telephone or in person as soon as possible after the sale to obtain details of the outcome of their bids to avoid incurring unnecessary storage charges. Successful bidders will pay the price of the final bid plus premium plus any applicable VAT.

PAYMENT

Buyers are expected to make payment for purchases immediately after the auction. To avoid delivery delays, prospective buyers are encouraged to supply bank or other suitable references before the auction. Please note that Christie's will not accept payments for purchased Lots from any party other than the registered buyer. Lots purchased in London may be paid for in the following ways: wire transfer, credit card: Visa and MasterCard only (up to £25,000), and cash (up to £5,000 (subject to conditions)), bankers draft (subject to conditions) or cheque (must be drawn in GBP on a UK bank; clearance will take 5 to 10 business days).

Wire Transfers: Lloyds TSB Bank Plc City Office PO Box 217 72 Lombard Street, London EC3P 3BT A/C: 0012710 Sort Code: 30-00-02 for international transfers; SWIFT LOYDGB2LCTY. For banks asking for an IBAN: GB81 LOYD 3000 0200 1727 10. Credit Card: Visa and MasterCard only A limit of £25,000 for credit card payments will apply. This limit is inclusive of the buyer's premium and any applicable taxes. Credit card payments at London sale sites will only be accepted for London sales. Christie's will not accept credit card payments for purchases made in any other sale site. The fax number to send completed CNP (Card Member not Present) authorisation forms to is +44 (0) 20 7389 2821. The number to call to make a CNP payment over the phone is +44 (0) 20 7752 3388. Alternatively clients can mail the authorisation form to the address below.

Cash is limited to £5,000 (subject to conditions). Bankers Draft should be made payable to Christie's (subject to conditions). Cheques should be made payable to Christie's (must be drawn in GBP on a UK bank; clearance will take 5 to 10 business days).

In order to process your payment efficiently, please quote sale number, invoice number and client number with all transactions.

All mailed payments should be sent to: Christie's, Cashiers' Department, 8 King Street, St James's, London, SW1Y 6QT

Please direct all inquiries to King Street Tel: +44 (0) 20 7389 2996 Fax: +44 (0) 20 7389 2863 or South Kensington Tel: +44 (0) 20 7752 3138 Fax: +44 (0) 20 7752 3143

VAT

Ω or †

VAT payable at 15% on hammer price and buyer's premium *

VAT payable at 5.001% on hammer price and at 15% on the buyer's premium

Ω or *

These lots have been imported from outside the EU for sale using a Temporary Importation procedure. Where a buyer of such a lot has registered an EU address but wishes to export the lot or complete the import into another EU country, he must advise Christie's immediately after the auction.

Buyers from within the EU:

VAT payable at 15% on just the buyer's premium (NOT the hammer price).

Buyers from outside the EU:

VAT payable at 15% on hammer price and buyer's premium. If a buyer, having registered under a non-EU address, decides that the item is not to be exported from the EU, then he should advise Christie's to this effect immediately (no symbol)

Auctioneers' Margin Scheme

In all other circumstances no VAT will be charged on the hammer price, but VAT payable at 15% will be added to the buyer's premium which is invoiced on a VAT inclusive basis. However, if the item falls under the HMC&E category of "printed matter", the premium will also be free of VAT.

Book Auctions

As above except:

(no symbol)

No VAT charged.

#

In all other circumstances no VAT will be charged on the hammer price, but VAT payable at 15% will be added to the buyer's premium which is invoiced on a VAT inclusive basis.

Wine Auctions

As above except:

‡

Stock offered duty-paid, but available in bond. VAT at 15% on hammer price and buyer's premium (wine only).

VAT Refunds

Refunds cannot be made where lots have been purchased from an address in the EU.

Under all circumstances, lots must be exported outside the UK within 3 months, and proof of export provided to Christie's in the appropriate form. No refund will be processed where the total amount is less than £100 UK & EU private buyers cannot reclaim VAT. Christie's will charge £35 for each refund processed. In respect of Daggared lots, Christie's are disallowed by HMC&E from refunding the VAT on the buyer's premium under any circumstances. For detailed information please see the leaflets available, or email VAT_London@Christies.com

ARTIST'S RESALE RIGHT ("DROIT DE SUITE")

If a lot is affected by this right it will be identified with the symbol A next to the lot number. The buyer agrees to pay to Christie's an amount equal to the resale royalty and we will pay such amount to the artist's collecting agent. Resale royalty applies where the Hammer Price is 1,000 Euro or more and the amount cannot be more than 12,500 Euro per lot. The amount is calculated as follows:

Royalty	For the portion of the Hammer Price (in Euro)
4.00%	up to 50,000
3.00%	between 50,000.01 and 200,000
1.00%	between 200,000.01 and 350,000
0.50%	between 350,000.01 and 500,000
0.25%	in excess of 500,000

Invoices will, as usual, be issued in Pounds Sterling. For the purposes of calculating the resale royalty the Pounds Sterling/Euro rate of exchange will be the European Central Bank reference rate on the day of the sale.

SHIPPING

It is the buyer's responsibility to pick up purchases or make all shipping arrangements. After payment has been made in full, Christie's can arrange property packing and shipping at the buyer's request and expense. Buyers should request an estimate for any large items or property of high value that require professional packing. A shipping form is enclosed with each invoice, alternatively buyers can visit www.christies.com/shipping to request a shipping estimate. For more information please contact the Shipping Department at +44 (0)20 7389 2712 or via ArtTransport_London@christies.com for both London, King Street and London, South Kensington sales.

EXPORT OF GOODS FROM THE EU

If you are proposing to take purchased items outside the EU the following applies:

Christie's Art Transport:

If you use Christie's Art Transport you will not be required to pay the VAT at the time of settlement.

Christie's VAT authorised Shipper:

If you use a Christie's VAT authorised shipper you will not be required to pay the VAT at the time of settlement.

Own Shipper:

VAT will be charged on the invoice, refundable by the VAT Department upon receipt of the appropriate official documents sent to us by your shipper.

Hand-Carried:

VAT will be charged on the invoice. This will be refunded by the VAT Department upon receipt of the appropriate official document.

* or Ω

Starred and Omega lots - A C88 can be obtained from Christie's Shipping Department. This document must be stamped by UK Customs on leaving the UK.

or †

Margin Scheme and Daggared lot - Please obtain VAT Notice 4 07 from the Cashiers. This document must be stamped by UK Customs on leaving the UK.

Under all circumstances lots must be exported within 3 months of the date of sale, and proof of export provided on the appropriate form.

EXPORT/IMPORT PERMITS

Buyers should always check whether an export licence is required before exporting. It is the buyer's sole responsibility to obtain any relevant export or import licence. The denial of any licence or any delay in obtaining licences shall neither justify the rescission of any sale nor any delay in making full payment for the lot. Christie's can advise buyers on the detailed provisions of the export licensing regulations and will submit any necessary export licence applications on request. However, Christie's cannot ensure that a licence will be obtained. Local laws may prohibit the import of some property and/or may prohibit the resale of some property in the country of importation. For more information, please contact Christie's Shipping Department at +44 (0)20 7389 2828 or the Museums, Libraries and Archives Council: Acquisitions, Export and Loans Unit at +44 (0)20 7273 8269/8267.

AML 31/03/09

CONDITIONS OF SALE

These Conditions of Sale and the Important Notices and Explanation of Cataloguing Practice set out the terms governing the legal relationship of Christie's and the seller with the buyer. You should read them carefully before bidding.

1. CHRISTIE'S AS AGENT

Except as otherwise stated Christie's acts as agent for the seller. The contract for the sale of the property is therefore made between the seller and the buyer.

2. CATALOGUE DESCRIPTIONS AND CONDITION

Lots are sold as described and otherwise in the condition they are in at the time of the sale, on the following basis.

(a) Condition

The nature of the lots sold in our auctions is such that they will rarely be in perfect condition, and are likely, due to their nature and age, to show signs of wear and tear, damage, other imperfections, restoration or repair. Any reference to condition in a catalogue entry will not amount to a full description of condition. Condition reports are usually available on request, and will supplement the catalogue description. In describing lots, our staff assess the condition in a manner appropriate to the estimated value of the item and the nature of the auction in which it is included. Any statement as to the physical nature or condition of a lot, in a catalogue, condition report or otherwise, is given honestly and with appropriate care. However, Christie's staff are not professional restorers or trained conservators and accordingly any such statement will not be exhaustive. We therefore recommend that you always view property personally, and, particularly in the case of any items of significant value, that you instruct your own restorer or other professional adviser to report to you in advance of bidding.

(b) Cataloguing Practice

Our cataloguing practice is explained in the Important Notices and Explanation of Cataloguing Practice, which appear after the catalogue entries.

(c) Attribution etc

Any statements made by Christie's about any lot, whether orally or in writing, concerning attribution to, for example, an artist, school, or country of origin, or history or provenance, or any date or period, are expressions of our opinion or belief. Our opinions and beliefs have been formed honestly and in accordance with the standard of care reasonably to be expected of an auction house of Christie's standing, due regard having been had to the estimated value of the item and the nature of the auction in which it is included. It must be clearly understood, however, that, due to the nature of the auction process, we are unable to carry out exhaustive research of the kind undertaken by professional historians and scholars, and also that, as research develops and scholarship and expertise evolve, opinions on these matters may change. We therefore recommend that, particularly in the case of any item of significant value, you seek advice on such matters from your own professional advisers.

(d) Estimates

Estimates of the selling price should not be relied on as a statement that this is the price at which the item will sell or its value for any other purpose.

(e) Fitness for Purpose

Lots sold are enormously varied in terms of age, category and condition, and may be purchased for a

variety of purposes. Unless otherwise specifically agreed, no promise is made that a lot is fit for any particular purpose.

3. AT THE SALE

(a) Refusal of admission

Christie's has the right, at our complete discretion, to refuse admission to the premises or participation in any auction and to reject any bid.

(b) Registration before bidding

Prospective buyers must complete and sign a registration form with his or her name and permanent address, and provide identification before bidding. We may require the production of bank details from which payment will be made or other financial references.

(c) Bidding as principal

When making a bid, a bidder is accepting personal liability to pay the purchase price, including the buyer's premium and all applicable taxes, plus all other applicable charges, unless it has been explicitly agreed in writing with Christie's before the commencement of the sale that the bidder is acting as agent on behalf of an identified third party acceptable to Christie's, and that Christie's will only look to the principal for payment.

(d) Absentee bids

We will use reasonable efforts to carry out written bids delivered to us prior to the sale for the convenience of clients who are not present at the auction in person, by an agent or by telephone. Bids must be placed in the currency of the place of the sale. Please refer to the catalogue for the Absentee Bids Form. If we receive written bids on a particular lot for identical amounts, and at the auction these are the highest bids on the lot, it will be sold to the person whose written bid was received and accepted first. Execution of written bids is a free service undertaken subject to other commitments at the time of the sale and provided that we have exercised reasonable care in the handling of written bids, the volume of goods is such that we cannot accept liability in any individual instance for failing to execute a written bid or for errors and omissions in connection with it arising from circumstances beyond our reasonable control.

(e) Telephone bids

If a prospective buyer makes arrangements with us prior to the commencement of the sale we will use reasonable efforts to contact them to enable them to participate in the bidding by telephone but we do not accept liability for failure to do so or for errors and omissions in connection with telephone bidding arising from circumstances beyond our reasonable control.

(f) Currency converter

At some auctions a currency converter may be operated. Errors may occur in the operation of the currency converter. Where these arise from circumstances beyond our reasonable control we do not accept liability to bidders who follow the currency converter rather than the actual bidding in the saleroom.

(g) Video or digital images

At some auctions there may be a video or digital screen. Errors may occur in its operation and in the quality of the image. We do not accept liability for such errors where they arise for reasons beyond our reasonable control.

(h) Reserves

Unless otherwise indicated, all lots are offered subject to a reserve, which is the confidential minimum price below which the lot will not be sold. The reserve will not exceed the low estimate printed in the catalogue. If any lots are not subject to a reserve, they will be identified with the symbol * next to the lot number. The auctioneer may open the bidding on any lot below the reserve by placing a bid on behalf of the seller. The auctioneer may continue to bid on behalf of the seller up to the amount of the reserve, either by placing consecutive bids or by placing bids in response to other bidders.

(i) Auctioneer's discretion

The auctioneer has the right to exercise reasonable discretion in refusing any bid, advancing the bidding in such a manner as he may decide, withdrawing or dividing any lot, combining any two or more lots and, in the case of error or dispute, and whether during or after the sale, determining the successful bidder, continuing the bidding, cancelling the sale or reoffering and reselling the item in dispute. If any dispute arises after the sale, then, in the absence of any evidence to the contrary the sale record maintained by the auctioneer will be conclusive.

(j) Successful bid and passing of risk

Subject to the auctioneer's reasonable discretion, the highest bidder accepted by the auctioneer will be the buyer and the striking of his hammer marks the acceptance of the highest bid and the conclusion of a contract for sale between the seller and the buyer. Risk and responsibility for the lot (including frames or glass where relevant) passes to the buyer at the expiration of seven calendar days from the date of the sale or on collection by the buyer if earlier.

4. AFTER THE SALE

(a) Buyer's premium

In addition to the hammer price, the buyer agrees to pay to us the buyer's premium together with any applicable value added tax. The buyer's premium is 25% of the final bid price of each lot up to and including £25,000, 20% of the excess of the hammer price above £25,000 and up to and including £300,000 and 12% of the excess of the hammer price above £300,000. Exceptions: Wine: 15% of the final bid price of each lot. VAT is payable at the applicable rate.

(b) Artist's Resale Right ("Droit de Suite")

If the Artist's Resale Right Regulations 2006 apply to the lot the buyer also agrees to pay to us an amount equal to the resale royalty provided for in those Regulations and we undertake to the buyer to pay such amount to the artist's collection agent. Lots affected are identified with the symbol λ next to the lot number.

(c) Payment and ownership

The buyer must pay the full amount due (comprising the hammer price, buyer's premium and any applicable taxes or resale royalty) immediately after the sale. This applies even if the buyer wishes to export the lot and an export licence is, or may be, required. The buyer will not acquire title to the lot until all amounts due to us from the buyer have been received by us in good cleared funds even in circumstances where we have released the lot to the buyer.

(d) Collection of purchases

We shall be entitled to retain items sold until all amounts due to us, or to Christie's International plc,

AML 19/02/09

or to any of its affiliates, subsidiaries or parent companies worldwide, have been received in full in good cleared funds or until the buyer has performed any other outstanding obligations as we, in our sole discretion, shall require, including, for the avoidance of doubt, completing any anti-money laundering or anti-terrorism financing checks we may require to our satisfaction. In the event a buyer fails to complete any anti-money laundering or anti-terrorism financing checks to our satisfaction, Christie's shall be entitled to cancel the sale and to take any other actions that are required or permitted under applicable law. Subject to this, the buyer shall collect purchased lots within two calendar days from the date of the sale unless otherwise agreed between us and the buyer.

(e) Packing, handling and shipping

Although we shall use reasonable efforts to take care when handling, packing and shipping a purchased lot and in selecting third parties for these purposes, we are not responsible for the acts or omissions of any such third parties. Similarly, where we suggest other handlers, packers or carriers if so requested, our suggestions are made on the basis of our general experience of such parties in the past and we are not responsible to any person to whom we have made a recommendation for the acts or omissions of the third party concerned.

(f) Export licence

Unless otherwise agreed by us in writing, the fact that the buyer wishes to apply for an export licence does not affect his or her obligation to make payment immediately after the sale nor our right to charge interest or storage charges on late payment. If the buyer requests us to apply for an export licence on his or her behalf, we shall be entitled to make a charge for this service. We shall not be obliged to rescind a sale nor to refund any interest or other expenses incurred by the buyer where payment is made by the buyer in circumstances where an export licence is required.

(g) Remedies for non payment

If the buyer fails to make payment in full in good cleared funds within 7 days after the sale, we shall have the right to exercise a number of legal rights and remedies. These include, but are not limited to, the following:

- (i) to charge interest at an annual rate equal to 5% above the base rate of Lloyds TSB Bank Plc;
- (ii) to hold the defaulting buyer liable for the total amount due and to commence legal proceedings for its recovery together with interest, legal fees and costs to the fullest extent permitted under applicable law;
- (iii) to cancel the sale;
- (iv) to resell the property publicly or privately on such terms as we shall think fit;
- (v) to pay the seller an amount up to the net proceeds payable in respect of the amount bid by the defaulting buyer;
- (vi) to set off against any amounts which we, or Christie's International plc, or any of its affiliates, subsidiaries or parent companies worldwide, may owe the buyer in any other transactions, the outstanding amount remaining unpaid by the buyer;
- (vii) where several amounts are owed by the buyer to us, or to Christie's International plc, or to any of its affiliates, subsidiaries or parent companies worldwide, in respect of different transactions, to apply any amount paid to discharge any

- amount owed in respect of any particular transaction, whether or not the buyer so directs;
- (viii) to reject at any future auction any bids made by or on behalf of the buyer or to obtain a deposit from the buyer before accepting any bids;
- (ix) to exercise all the rights and remedies of a person holding security over any property in our possession owned by the buyer, whether by way of pledge, security interest or in any other way, to the fullest extent permitted by the law of the place where such property is located. The buyer will be deemed to have granted such security to us and we may retain such property as collateral security for such buyer's obligations to us;
- (x) to take such other action as we deem necessary or appropriate.

If we resell the property under paragraph (iv) above, the defaulting buyer shall be liable for payment of any deficiency between the total amount originally due to us and the price obtained upon resale as well as for all reasonable costs, expenses, damages, legal fees and commissions and premiums of whatever kind associated with both sales or otherwise arising from the default. If we pay any amount to the seller under paragraph (v) above, the buyer acknowledges that Christie's shall have all of the rights of the seller, however arising, to pursue the buyer for such amount.

(h) Failure to collect purchases

Where purchases are not collected within two calendar days from the date of the sale, whether or not payment has been made, we shall be permitted to remove the property to a third party warehouse at the buyer's expense, and only release the items after payment in full has been made of removal, storage, handling, and any other costs reasonably incurred, together with payment of all other amounts due to us.

(i) Selling Property at Christie's

In addition to expenses such as transport, all consignors pay a commission according to a fixed scale of charges based upon the value of the property sold by the consignor at Christie's in a calendar year. Commissions are charged on a sale by sale basis.

5. LIMITED WARRANTY

In addition to Christie's liability to buyers set out in clause 2 of these Conditions, but subject to the terms and conditions of this paragraph, Christie's warrants for a period of five years from the date of the sale that any property described in headings printed in UPPER CASE TYPE (i.e. headings having all capital-letter type) in this catalogue (as such description may be amended by any saleroom notice or announcement) which is stated without qualification to be the work of a named author or authorship, is authentic and not a forgery. The term "author" or "authorship" refers to the creator of the property or to the period, culture, source or origin, as the case may be, with which the creation of such property is identified in the UPPER CASE description of the property in this catalogue. Only UPPER CASE TYPE headings of lots in this catalogue indicate what is being warranted by Christie's. Christie's warranty does not apply to supplemental material which appears below the UPPER CASE TYPE headings of each lot and Christie's is not responsible for any errors or omissions in such material. The terms used in the headings are further explained in Important Notices and Explanation of Cataloguing Practice. The warranty does not apply to

any heading which is stated to represent a qualified opinion. The warranty is subject to the following:

- (i) It does not apply where (a) the catalogue description or saleroom notice corresponded to the generally accepted opinion of scholars or experts at the date of the sale or fairly indicated that there was a conflict of opinions; or (b) correct identification of a lot can be demonstrated only by means of either a scientific process not generally accepted for use until after publication of the catalogue or a process which at the date of publication of the catalogue was unreasonably expensive or impractical or likely to have caused damage to the property.
- (ii) The benefits of the warranty are not assignable and shall apply only to the original buyer of the lot as shown on the invoice originally issued by Christie's when the lot was sold at auction.
- (iii) The original buyer must have remained the owner of the lot without disposing of any interest in it to any third party.
- (iv) The buyer's sole and exclusive remedy against Christie's and the seller, in place of any other remedy which might be available, is the cancellation of the sale and the refund of the original purchase price paid for the lot. Neither Christie's nor the seller will be liable for any special, incidental or consequential damages including, without limitation, loss of profits nor for interest.
- (v) The buyer must give written notice of claim to us within five years from the date of the auction. It is Christie's general policy, and Christie's shall have the right, to require the buyer to obtain the written opinions of two recognised experts in the field, mutually acceptable to Christie's and the buyer, before Christie's decides whether or not to cancel the sale under the warranty.
- (vi) The buyer must return the lot to the Christie's saleroom at which it was purchased in the same condition as at the time of the sale.

6. COPYRIGHT

The copyright in all images, illustrations and written material produced by or for Christie's relating to a lot including the contents of this catalogue, is and shall remain at all times the property of Christie's and shall not be used by the buyer, nor by anyone else, without our prior written consent. Christie's and the seller make no representation or warranty that the buyer of a property will acquire any copyright or other reproduction rights in it.

7. SEVERABILITY

If any part of these Conditions of Sale is found by any court to be invalid, illegal or unenforceable, that part shall be discounted and the rest of the conditions shall continue to be valid to the fullest extent permitted by law.

8. LAW AND JURISDICTION

The rights and obligations of the parties with respect to these Conditions of Sale, the conduct of the auction and any matters connected with any of the foregoing shall be governed and interpreted by the laws of England. By bidding at auction, whether present in person or by agent, by written bid, telephone or other means, the buyer shall be deemed to have submitted, for the benefit of Christie's, to the exclusive jurisdiction of the courts of the United Kingdom.

AML 9/9/08

WORLDWIDE SALEROOMS AND EUROPEAN OFFICES

AUSTRIA

VIENNA
+43 (0)1 533 8812
Angela Baillou

BELGIUM

BRUSSELS
+32 (0)2 512 88 30
Roland de Lathuy

FINLAND AND THE BALTIC STATES

HELSINKI
+358 (0)9 608 212
Barbro Schauman
(Consultant)

FRANCE

• PARIS
+33 (0)1 40 76 85 85

GERMANY

DÜSSELDORF
+49 (0)21 14 91 59 30
Andreas Rumbler
FRANKFURT

+49 (0)61 74 20 94 85
Anja Schaller

HAMBURG
+49 (0)40 27 94 073
Christiane Gräfin zu

Rantzau
MUNICH
+49 (0)89 24 20 96 80

Marie Christine Gräfin
Huy

STUTTGART
+49 (0)71 12 26 96 99
Eva Susanne Schweizer

ISRAEL

TEL AVIV
+972 (0)3 695 0695
Roni Gilat-Baharaff

ITALY

• MILAN
+39 02 303 2831
ROME
+39 06 686 3333

JAPAN

TOKYO
+81 (0)3 3571 0668
Kanae Ishibashi

MONACO

+377 97 97 11 00
Nancy Dotta
(Consultant)

THE NETHERLANDS

• AMSTERDAM
+31 (0)20 57 55 255

PEOPLES REPUBLIC OF CHINA

• HONG KONG
+852 2521 5396

RUSSIA

MOSCOW
+7 495 937 6364
+44 20 7389 2318
Anastasia Volobueva

SPAIN

BARCELONA
+34 (0)93 487 8259
Cuca Escoda

MADRID
+34 (0)91 532 6626

Juan Varez
Dalia Padilla

SWITZERLAND

• GENEVA
+41 (0)22 319 1766
Eveline de Proyart

• ZURICH
+41 (0)44 268 1010
Dr. Dirk Boll

TURKEY

ISTANBUL
+90 (0)532 582 4895
Zeynep Kayhan
(Consultant)

UNITED ARAB EMIRATES

• DUBAI
+971 (0)4 425 5647
Chaden Khoury

UNITED KINGDOM

• LONDON
+44 (0)20 7839 9060
LONDON,

• SOUTH KENSINGTON
+44 (0)20 7930 6074
SOUTH

+44 (0)845 900 1766
Mark Wrey

NORTH
+44 (0)845 900 1766
Thomas Scott

EAST

+44 (0)845 900 1766
Simon Reynolds

NORTHWEST AND

WALES

+44 (0)845 900 1766
Mark Newstead

Jane Blood

SCOTLAND

+44 (0)131 225 4756
Bernard Williams

Robert Lagneau
David Bowes-Lyon

(Consultant)

ISLE OF MAN

+44 1624 814502

The Marchioness

Conyngham

(Consultant)

CHANNEL ISLANDS

+44 (0)1534 485 988

Melissa Bonn

IRELAND

+353 (0)59 86 24996
Christine Ryall

UNITED STATES

LOS ANGELES

+1 310 385 2600

• NEW YORK

+1 212 636 2000

• DENOTES SALEROOM ENQUIRIES— Call the Saleroom or Office
For a complete salerooms & offices listing go to christies.com

EMAIL— info@christies.com

17/04/09

CHRISTIE'S SPECIALIST DEPARTMENTS AND SERVICES

DEPARTMENTS

AMERICAN FURNITURE
NY: +1 212 636 2230

AMERICAN INDIAN ART
NY: +1 212 606 0536

AMERICAN PICTURES
NY: +1 212 636 2140

ANGLO-INDIAN ART
KS: +44 (0)20 7389 2570

ANTIQUITIES
SK: +44 (0)20 7752 3219

ARMS AND ARMOUR
SK: +44 (0)20 7752 3119

AUSTRALIAN PICTURES
KS: +44 (0)20 7389 2040

BOOKS AND
MANUSCRIPTS
KS: +44 (0)20 7389 2158
SK: +44 (0)20 7752 3203

BRITISH & IRISH ART
KS: +44 (0)20 7389 2682
NY: +1 212 636 2084
SK: +44 (0)20 7752 3257

BRITISH ART ON PAPER
KS: +44 (0)20 7389 2278
SK: +44 (0)20 7752 3293
NY: +1 212 636 2085

BRITISH PICTURES 1500-
1850
KS: +44 (0)20 7389 2945

CARPETS
KS: +44 (0)20 7389 2370
SK: +44 (0)20 7389 2776

CHINESE WORKS OF ART
KS: +44 (0)20 7389 2577
SK: +44 (0)20 7752 3239

CLOCKS
KS: +44 (0)20 7389 2224

CONTEMPORARY ART
KS: +44 (0)20 7389 2920
SK: +44 (0)20 7752 3313

CORKSCREWS
SK: +44 (0)20 7752 3263

COSTUME, TEXTILES AND
FANS
SK: +44 (0)20 7752 3215

EUROPEAN CERAMICS
AND GLASS
SK: +44 (0)20 7752 3026

FURNITURE
KS: +44 (0)20 7389 2482
SK: +44 (0)20 7389 2791

ICONS
SK: +44 (0)20 7752 3261

IMPRESSIONIST PICTURES
KS: +44 (0)20 7389 2638
SK: +44 (0)20 7752 3218

INDIAN CONTEMPORARY
ART
KS: +44 (0)20 7389 2700
NY: +1 212 636 2189

INTERIORS
SK: +44 (0)20 7389 2236
NY: +1 212 636 2032

ISLAMIC WORKS OF ART
KS: +44 (0)20 7389 2700
SK: +44 (0)20 7752 3239

JAPANESE WORKS OF
ART
KS: +44 (0)20 7389 2591
SK: +44 (0)20 7752 3239

JEWELLERY
KS: +44 (0)20 7389 2383
SK: +44 (0)20 7752 3265

LATIN AMERICAN ART
NY: +1 212 636 2150

MARITIME PICTURES
SK: +44 (0)20 7752 3284
NY: +1 212 707 5949

MINIATURES
KS: +44 (0)20 7389 2650
SK: +44 (0)20 7752 3177

MODERN DESIGN
SK: +44 (0)20 7389 2142

MUSICAL INSTRUMENTS
SK: +44 (0)20 7752 3365

NINETEENTH CENTURY
FURNITURE AND
SCULPTURE
KS: +44 (0)20 7389 2144

NINETEENTH CENTURY
EUROPEAN PICTURES
KS: +44 (0)20 7389 2443
SK: +44 (0)20 7752 3309

OBJECTS OF VERTU
KS: +44 (0)20 7389 2347
SK: +44 (0)20 7752 3001

OLD MASTER DRAWINGS
KS: +44 (0)20 7389 2251

OLD MASTER PICTURES
KS: +44 (0)20 7389 2531
SK: +44 (0)20 7752 3250

ORIENTAL CERAMICS
AND
Works of Art
SK: +44 (0)20 7752 3235

PHOTOGRAPHS
SK: +44 (0)20 7389 2292

PICTURE FRAMES
SK: +44 (0)20 7389 2763

POPULAR CULTURE AND
ENTERTAINMENT
SK: +44 (0)20 7752 3123

POST-WAR ART
KS: +44 (0)20 7389 2450
SK: +44 (0)20 7752 3210

POSTERS
SK: +44 (0)20 7752 3208

PRINTS
KS: +44 (0)20 7389 2328
SK: +44 (0)20 7752 3109

PRIVATE COLLECTION
AND COUNTRY HOUSE
SALES
KS: +44 (0)20 7389 2343

RUSSIAN WORKS OF ART
KS: +44 (0)20 7389 2662

TRAVEL, SCIENCE AND
NATURAL HISTORY
SK: +44 (0)20 7752 3291

SCULPTURE
KS: +44 (0)20 7389 2331
SK: +44 (0)20 7389 2794

SILVER
KS: +44 (0)20 7389 2666
SK: +44 (0)20 7752 3262

TOPOGRAPHICAL
PICTURES
KS: +44 (0)20 7389 2040
SK: +44 (0)20 7752 3291

TRIBAL AND PRE-
COLUMBIAN ART
PAR: +33 (0)140 768 386

TWENTIETH CENTURY
BRITISH ART
KS: +44 (0)20 7389 2684
SK: +44 (0)20 7752 3311

TWENTIETH CENTURY
DECORATIVE ART &
DESIGN
KS: +44 (0)20 7389 2140
SK: +44 (0)20 7752 3236

TWENTIETH CENTURY
PICTURES
SK: +44 (0)20 7752 3218

VICTORIAN PICTURES
KS: +44 (0)20 7389 2468
SK: +44 (0)20 7752 3257

WATERCOLOURS AND
DRAWINGS
SK: +44 (0)20 7752 3293

WINE
KS: +44 (0)20 7752 3366

AUCTION SERVICES

CHRISTIE'S FINE ART
SECURITY SERVICES
Tel: +44 (0)20 7622 0609
Fax: +44 (0)20 7978 2073
Email:
cfass@christies.com

CORPORATE
COLLECTIONS
Tel: +44 (0)20 7389 2089
Email:
bclark@christies.com

FINANCIAL SERVICES
Tel: +44 (0)20 7389 2624
Fax: +44 (0)20 7389 2204
Email: cbernard-
treille@christies.com

HERITAGE AND
TAXATION
Tel: +44 (0)20 7389 2101
Fax: +44 (0)20 7389 2300
Email:
sjohnson@christies.com

PRIVATE COLLECTION
AND COUNTRY HOUSE
SALES
Tel: +44 (0)20 7389 2343
Fax: +44 (0)20 7389 2225
Email:
awaters@christies.com

MUSEUM SERVICES
US: +1 212 636 2620
Fax: +1 212 636 4929
Email:
awhiting@christies.com

PRIVATE SALES
US: +1 212 636 2034
Fax: +1 212 636 2035
Email:
bwhite@christies.com

Valuations
Tel: +44 (0)20 7389 2548
Fax: +44 (0)20 7389 2038
Email:
norchard@christies.com

OTHER SERVICES

CHRISTIE'S EDUCATION
London
Tel: +44 (0)20 7665 4350
Fax: +44 (0)20 7665 4351
Email:
education@christies.com
New York
Tel: +1 212 355 1501
Fax: +1 212 355 7370
Email:
christieseducation@christies.edu

CHRISTIE'S GREAT
ESTATES
Tel: +44 (0)20 7389 2734
Fax: +44 (0)20 7389 2403
Email:
info@christiesge.com

KEY TO ABBREVIATIONS

KS:
London, King Street
NY:
New York, Rockefeller Plaza
PAR:
Paris
SK:
London, South Kensington

30/03/09

**ALBERTO PASINI
(ITALIAN, 1826-1899)**

Porta di un Bazar

signed 'A. Pasini' (lower right)
oil on canvas
13 x 16 7/8 in. (33.1 x 41.5 cm.)

£150,000-200,000

**Auction
9 July 2009**

**Viewing
3-8 July 2009**

**Enquiries
Alexandra McMorrow
amcmorrow@christies.com
+44 (0)20 7389 2538**

**Catalogues
London
+44 (0)20 7389 2820
New York
+1 800 395 6300**

**London
8 King Street,
St. James's
London SW1Y 6QT
+44 (0)20 7839 9060**

**View catalogues
and leave bids online at
christies.com**



ORIENTALIST ART

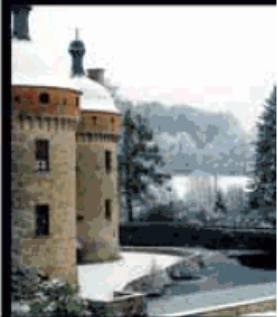
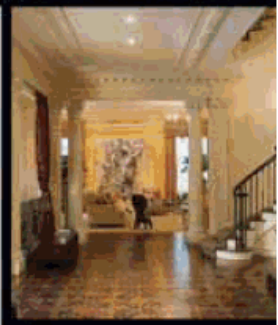
London, King Street, 9 July 2009

CHRISTIE'S
SINCE 1766



Art for your home

Home
for your art



CHRISTIE'S GREAT ESTATES
*International Luxury
 Real Estate Specialists*
www.christiesgreatestates.com

If you are as passionate about your home as you are about your art collection, one company inspires confidence and trust with its proven expertise. Christie's Great Estates, a subsidiary of Christie's, reaches a global market for buying and selling the world's most distinctive real estate.

**CHRISTIE'S
 GREAT ESTATES®**

Beverly Hills +1 310 385 2691
 London +44 (0)20 7389 2551
 New York +1 212 468 7140

Palm Beach +1 561 805 7327
 Santa Fe +1 505 983 8733



JEWELS AT SOUTH KENSINGTON

TUESDAY 14 JULY 2009 AT 2.00 PM
 85 Old Brompton Road, London SW7 3LD
CODE NAME: JLS
SALE NUMBER: 5893

(Dealers billing name and address must agree with tax exemption certificate. Invoices cannot be changed after they have been printed.)

BID ONLINE FOR THIS SALE AT CHRISTIES.COM

BIDDING INCREMENTS

Bidding generally opens below the low estimate and advances in increments of up to 10%, subject to the auctioneer's discretion. Absentee bids that do not conform to the increments set below may be lowered to the next bidding interval.

- UK£50 to UK£1,000 by UK£50s
- UK£1,000 to UK£2,000 by UK£100s
- UK£2,000 to UK£3,000 by UK£200s
- UK£3,000 to UK£5,000 by UK£200, 500, 800
(ie: UK£4,200, 4,500, 4,800)
- UK£5,000 to UK£10,000 by UK£500s
- UK£10,000 to UK£20,000 by UK£1,000s
- UK£20,000 to UK£30,000 by UK£2,000s
- UK£30,000 to UK£50,000 by UK£2,000, 5,000, 8,000
(ie: UK£32,000, 35,000, 38,000)
- UK£50,000 to UK£100,000 by UK£5,000s
- UK£100,000 to UK£200,000 by UK£10,000s
- above UK£200,000 at auctioneer's discretion

The auctioneer may vary the increments during the course of the auction at his or her own discretion.

Auction Results: +44 (0)20 7627 2707

Please also refer to the information contained in Buying at Christie's.
 I request Christie's to bid on the following lots up to the maximum price I have indicated for each lot. I understand that if my bid is successful, the purchase price will be the sum of my final bid plus a buyer's premium of 25% of the final bid price of each lot up to and including £25,000, 20% of the excess of the hammer price above £25,000 and up to and including £500,000 and 12% of the excess of the hammer price above £500,000, together with any VAT chargeable on the final bid and the buyer's premium. VAT is chargeable on the purchase price of daggered (†) lots, and for buyers outside the EU on (0) lots, at the standard rate. VAT is chargeable on the purchase price of starred (*) lots at the reduced rate. Christie's South Kensington is not able to notify successful bidders by telephone. While invoices are sent out by mail after the auction we do not accept responsibility for notifying you of the result of your bid. Buyers are requested to contact us by telephone or in person as soon as possible after the sale to obtain details of the outcome of their bids to avoid incurring unnecessary storage charges.
 I understand that Christie's provides the service of executing absentee bids for the convenience of clients and that Christie's is not responsible for failing to execute bids or for errors relating to execution of bids. On my behalf, Christie's will try to purchase these lots for the lowest possible price, taking into account the reserve and other bids. Absentee bids submitted on "no reserve" lots will, in the absence of a higher bid, be executed at approximately 50% of the low pre-sale estimate or at the amount of the bid if it is less than 50% of the low pre-sale estimate. If identical absentee bids are received for the same lot, the written bid received first by Christie's will take precedence. Please contact the Telephone Bid office at least 24 hours in advance of the sale to make arrangements for telephone bidding. Tel: +44 (0)20 7752 3111
 All bids are subject to the terms of the Conditions of Sale and Limited Warranty printed in each Christie's catalogue.

ABSENTEE BIDS FORM

CHRISTIE'S SOUTH KENSINGTON

Absentee bids must be received at least 24 hours before the auction begins.
Tel: +44 (0)20 7752 3225 Fax: +44 (0)20 7581 1403 on-line www.christies.com

5893

Client Number (if applicable) _____ Sale Number _____
 Billing Name (please print) _____
 Address _____
 _____ Post Code _____
 Daytime Telephone _____ Evening Telephone _____
 Fax (Important) _____ Email _____
 Please tick if you prefer not to receive information about our upcoming sales by e-mail
 Signature _____

If you have not previously bid or consigned with Christie's, please attach copies of the following documents. Individuals: government-issued photo identification (such as a photo driving licence, national identity card, or passport) and, if not shown on the ID document, proof of current address, for example a utility bill or bank statement. Corporate clients: a certificate of incorporation. Other business structures such as trusts, offshore companies or partnerships: please contact the Credit Department at +44 (0)20 7752 3137 for advice on the information you should supply. If you are registering to bid on behalf of someone who has not previously bid or consigned with Christie's, please attach identification documents for yourself as well as the party on whose behalf you are bidding, together with a signed letter of authorisation from that party. New clients, clients who have not made a purchase from any Christie's office within the last two years, and those wishing to spend more than on previous occasions may be asked to supply a bank reference. We also request that you complete the section below with your bank details:

Name of Bank(s) _____
 Address of Banks(s) _____
 Account Number(s) _____
 Name of Account Officer(s) _____
 Bank Telephone Number _____

PLEASE PRINT CLEARLY

Lot number (in numerical order)	Maximum Bid UKE (excluding buyer's premium)	Lot number (in numerical order)	Maximum Bid UKE (excluding buyer's premium)

If you are registered within the European Community for VAT/IVA/TVVA/BTW/MMWST/MOMS Please quote number below:

JEWELS AND WATCHES

Catalogue Subscriptions Order Form

Code	Subscription Title	Location	Issues	UK£Price	US\$Price	EURPrice
Jewellery						
<input type="checkbox"/> K316	Vintage Jewels at South Kensington (included in K16)	South Kensington	2	19	30	29
<input type="checkbox"/> A16	Amsterdam Jewels (includes Watches)	Amsterdam	2	27	44	40
<input type="checkbox"/> D16	Jewels and Watches: The Dubai Sales	Dubai	2	70	114	106
<input type="checkbox"/> N16	Magnificent Jewels: The New York Sales	New York	4	141	228	213
<input type="checkbox"/> L16	Magnificent Jewels: The London Sales	King Street	2	57	95	87
<input type="checkbox"/> P16	Paris Jewels	Paris	2	38	61	57
<input type="checkbox"/> K16	Jewels at South Kensington (includes K316)	South Kensington	10	95	152	143
<input type="checkbox"/> M16	Milan Jewels (includes Watches)	Milan	2	27	44	40
<input type="checkbox"/> G16	Magnificent Jewels: The Geneva Sales	Geneva	2	70	114	106
<input type="checkbox"/> H16	Magnificent Jewels: The Hong Kong Sales (includes Jadeite)	Hong Kong	2	70	114	106
Watches and Wristwatches						
<input type="checkbox"/> A16	Jewels (includes Watches)	Amsterdam	2	27	44	40
<input type="checkbox"/> D16	Jewels and Watches: The Dubai Sales	Dubai	2	70	114	106
<input type="checkbox"/> H44	Important Watches	Hong Kong	2	70	114	106
<input type="checkbox"/> N44	Important Pocket Watches and Wristwatches	New York	2	70	114	106
<input type="checkbox"/> G44	Important Pocket Watches and Wristwatches	Geneva	2	70	114	106
<input type="checkbox"/> M16	Milan Jewels (includes Watches)	Milan	2	27	44	40

Catalogue Subscriptions Order Form

Billing Address/Send catalogues to:

Name

Address

Daytime Telephone Facsimile e-mail

Please tick if you prefer not to receive information about our upcoming sales by e-mail

Christie's Client Number

Method of payment: Visa MasterCard American Express

Card Number Expiry Date

Card Member Signature

Cheque enclosed US\$ UK£ EUR Please make cheque payable to **Christie's**

Residents of the US states of CA, FL, IL, MA, NY, PA, RI, and TX please add local sales tax.

Residents of Belgium, France, Germany, Italy, the Netherlands, and Spain please add local VAT. Tax Exempt clients must include a copy of their Tax Exempt Certificate.

Orders shipped to North or South America will be charged in US dollars. Orders shipped to the European Union (except the UK) will be charged in euros. All other orders will be charged in UK pounds sterling.

Receive beautifully illustrated catalogues from our auctions around the world.

Your private view of some of the world's most beautiful objects and an indispensable guide to forthcoming auctions will be mailed to you as soon as available.

To place an order: please indicate your choice above and complete your details on the left and fax or mail this form. Alternatively, view catalogues free online at christies.com.

Reply to:

Christie's Catalogues, 8 King Street, St James's
London SW1Y 6QT, United Kingdom
Tel: +44 (0)20 7389 2820 Fax: +44 (0)20 7389 2869
subscribe-uk@christies.com

Christie's Catalogues, 20 Rockefeller Plaza
New York, NY 10020, USA
Tel: +1 800 395 6300 Fax: +1 800 395 5600
From outside US
Tel: +1 212 636 2500 Fax: +1 212 636 4940
subscribe-us@christies.com

CHRISTIE'S



CHRISTIE'S

THE BOARD OF CHRISTIE'S

Patricia Barbizet, Chairman,
Edward Dolman, Chief Executive Officer;
Charles Cator, Deputy Chairman,
François Curiel, Deputy Chairman,
Nick Deeming, Pedro Girao, Brett Gorvy,
Nicholas Hall, Lisa King, Stephen Lash,
Viscount Linley, Marc Porter,
Jussi Pyllkänen, Theow-Huang Tow

CHRISTIE'S UK

CHAIRMAN'S OFFICE

Viscount Linley, Chairman
Noël Annesley, Honorary Chairman;
Richard Roundell, Vice Chairman;

Robert Copley, Deputy Chairman;
The Earl of Halifax, Deputy Chairman;
Jonathan Horwich, Deputy Chairman;
Francis Russell, Deputy Chairman;
Edward Clive
Amin Jaffer
Roy Miller
Orlando Rock

Jane Hay, UK Managing Director;
Lisa King, International Managing Director;
Gerard Barrett, International Commercial
Director

DIRECTORS

Anke Adler-Slotke, James Alabaster,
Philip Anders, Simon Andrews,
Richard Bagnall-Smith, Upasana Bajaj,
Martin Beisly, Philip Belcher, Tara Bell,
Dominic Bennett, Jeremy Bentley,
Ellen Berkeley, Giovanna Bertazzoni,
Rufus Bird, Jane Blood, David Bowes-Lyon,
Peter Brown, Robert Brown,
James Bruce-Gardyne, Olivier Camu,
Benjamin Clark, Karen Cole,
Jamie Collingridge, Ingrid Cowan,
Migi Coyle, John Croom, Sebastian Davies,
Isabelle de La Bruyere, Willem de Gier,
Julia Delves Broughton, Adrian Denton,
Harriet Drummond, Adam Duncan,
Hugh Edmeades, (Chairman, Christie's South
Kensington), David Elswood,
Jean Paul Engelen,
Meredith Etherington-Smith, Nick Finch,
Peter Flory, Elizabeth Floyd, Margaret Ford,
Patricia Frost, Philippe Garner, Simon Green,
David Gregory, Peter Gwynn, Philip Harley,
Paul Hewitt, Rachel Hidderley, Mark Hinton,
Gillian Holden, Sarah Hornsby, Michael Jeha,
Susan Johnson, Donald Johnston,
Richard Knight, Robert Lagneau,
Nicholas Lambourn, Elizabeth Lane,
Laura Lindsay, David Llewellyn,
Richard Lloyd, William Lorimer,
Catherine Manson, John McDonald,
Nic McElhatton, Alexandra McMorro,
Andrew McVinish, Franca Mercati,
Yamini Mehta, Edward Monagle,
Chris Munro, Rupert Neelands,
Mark Newstead, Liberte Nuti,
Nicholas Orchard, Andreas Pampoulides,
Keith Penton, Henry Pettifer,
Anthony Phillips, William Porter,
Marcus Räddecke, Paul Raison, Amjad Rauf,
William Robinson, Christine Ryall,
Raymond Sanicroft-Baker, Tom Scott,
Thomas Seydoux, Dominic Simpson,
John Stainton, Matthew Stephenson,
Jonathan Stone, Kay Sutton,
Alexis de Tiesenhausen, Nicolette Tomkinson,
Brenda Van Camp, Thomas Venning,
Jay Vincze, David Warren, Andrew Waters,
Nick White, Mark Wilkinson,
Bernard Williams, Harry Williams-Bulkeley,
Martin Wilson, Victoria Wolcough,
Rodney Woolley, Toby Woolley,
Tom Woolston, Mark Wrey

ASSOCIATE DIRECTORS

Richard Addington, Deborah Allan,
Dina Amin, Johanna Baring, Sven Becker,
Piers Boothman, Mark Bowis,
Louise Broadhurst, Jo Brooks, Lucy Brown,
Anne Bury, Michael Cowley, Daniel Gallen,
Pat Galligan, Sebastian Goetz, Lara Grieve,
Coral Hall, Peter Horwood, Rosie Jarvie,
Alexandra Kindermann, Teresa Krasny,
Mark Henry Lampé, Jeffrey Lassaline,
William Lawrie, Brandon Lindberg, Joy
McCall, Murray Macaulay, Sarah Mansfield,
Nicolas Martineau, Jeremy Morgan,
Sandra Nedvetskaia, Caroline Porter,
Michael Prevezer, Simon Reynolds,
Sumiko Roberts, Tim Schmelcher,
Rosemary Scott, Nigel Shorthouse,
Laura Tayler, Daniel Tolson, Bart van Son,
Tony Walshe, Gower Williams,
Annette Wilson, Yuka Yamaji, Geoff Young

EUROPEAN DIRECTORS

Jussi Pyllkänen, President
Angela Baillou, Dr. Dirk Boll,
Roni Gilat-Baharaff, Clarice Pecori Giraldi,
Christiane Gräfin zu Rantzau,
Roland de Lathuy, Eveline de Proyart,
Francois de Ricqlès, Andreas Rumberl,
Jop Ubbens, Juan Varez

CHRISTIE'S EUROPEAN ADVISORY BOARD

Pedro Girao, Chairman,
Christopher Balfour, Patricia Barbizet,
Genevra Elkann, I.D. Fürstin zu Fürstenberg,
S.D. Dr Johann Georg Prinz von Hohenzollern,
H.R.H. Prince Pavlos of Greece,
Alicia Koplowitz, Robert Manoukian,
Her Grace The Duchess of Marlborough,
Usha Mittal, Leopoldo Rodés, Çiğdem Simavi

The Paper used in this catalogue
has been manufactured at a mill
which has been awarded the ISO
14001 for Environment
Management and is a registered
mill within EMAS (the EU Eco-
Management and Audit Scheme)



Photo credit: Max Saber
Printed in England
© Christie, Manson & Woods Ltd. (2007)



26/05/09



CHRISTIE'S

85 OLD BROMPTON ROAD LONDON SW7 3LD

+44 (0)20 7930 6074 TELEPHONE +44 (0)20 7752 3321 FACSIMILE