

EXQUISITE DIAMOND SOLITAIRES MODERATELY PRICED



7208
Platinum
7 diamonds
\$300.00



7209
Platinum
7 diamonds
\$315.00



7210
Platinum
3 diamonds
\$330.00



7211
Platinum
9 diamonds
\$345.00



7212
Platinum
9 diamonds
\$360.00



7213
Platinum
11 diamonds
\$370.00



7214
Platinum
5 diamonds
\$400.00

7215 Platinum
5 diamonds, \$410.00



A MAGNIFICENT SOLITAIRE
7220 A large diamond of wonderful quality and color, weighing 7.62 carats, exquisitely mounted in a platinum ring, enhanced with 8 square and 18 round diamonds — an exceptional value, \$9000.00



7216
Platinum
7 diamonds
\$420.00



7217
Platinum
1 large round and 2 baguette diamonds, \$450.00



7218
Platinum
1 large and 4 small round diamonds, 4 baguette diamonds
\$500.00



7219
Platinum
13 diamonds
\$550.00



7221
Platinum
1 large round and 6 baguette diamonds, \$550.00



7222
Platinum
25 diamonds
\$575.00



7224
Platinum
13 diamonds
\$700.00



7225
Platinum
17 diamonds
\$725.00



7223
Platinum
1 large, 2 small round and 2 navette diamonds, \$625.00



7227
Platinum
25 diamonds
\$850.00



7228
Platinum
19 diamonds
\$950.00



7229
Platinum
13 diamonds
\$1350.00



7230
Platinum
1 large, 2 small round and 4 baguette diamonds
\$1450.00



7226
Platinum
25 diamonds
\$800.00



7232
Platinum
65 diamonds
\$1700.00



7233
Platinum
1 large navette and 2 baguette diamonds, \$750.00



7234
Platinum
1 large navette and 2 baguette diamonds, \$1250.00



7235
Platinum
1 large emerald cut and 6 baguette diamonds
\$1250.00



7231
Platinum
1 large, 2 small round and 2 baguette diamonds
\$1500.00



7237
Platinum
1 large navette, 6 baguette and 16 round diamonds
\$2800.00



7238
Platinum
1 large emerald cut and 2 baguette diamonds
\$3900.00



7236
Platinum
1 large emerald cut and 8 baguette diamonds
\$1400.00

S. KIND & SONS, 1110 CHESTNUT ST. PHILADELPHIA

DUE TO UNUSUAL CONDITIONS PRICES ARE SUBJECT TO CHANGE

ARTISTIC RINGS IN CHARMING AND FASCINATING DESIGNS



7239
Platinum
7 diamonds
\$100.00



7240
Platinum
1 navette and
2 square diamonds
12 round diamonds
\$185.00



7241
Platinum
1 navette and
14 round diamonds
\$225.00



7242
Platinum
11 diamonds
\$105.00



7243
Platinum
14 diamonds
\$130.00



7244
Platinum
7 diamonds
\$120.00



7245
Platinum
25 diamonds
\$180.00



7246 Platinum, 3
round and 2 baguette
diamonds, \$525.00



7247
Platinum
25 diamonds
\$195.00



7248
Platinum
14 diamonds
\$140.00



7250
Platinum
9 diamonds
\$110.00



7251
Platinum
17 diamonds
4 calibre sapphires
\$170.00



A REMARKABLE VALUE
7249 One of our new de-
signs—hand wrought of
platinum and artistically
set with 15 diamonds
\$125.00



7253
Platinum
21 round and
2 baguette dias.
4 calibre emeralds
\$370.00



7254
Platinum
11 diamonds
\$245.00



7255
Platinum
13 diamonds
\$135.00



7252
Platinum
32 round and
2 baguette
diamonds, \$500.00



7258
Platinum
27 diamonds
\$350.00



7259
Platinum
19 diamonds
\$275.00



7260
Platinum
30 round and
8 baguette
diamonds, \$525.00



7256
Platinum
19 diamonds
\$550.00



7257
Platinum
21 round and
6 baguette
diamonds, \$410.00



7263
Platinum
11 diamonds
\$115.00



7264
Platinum
26 diamonds
\$800.00



7265
Platinum
39 diamonds, 4
calibre emeralds
\$290.00



7261
Platinum
26 round and
2 baguette
diamonds, \$270.00



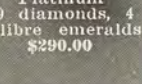
7262
Platinum
16 round and
1 baguette
diamond, \$230.00



7267
Platinum
31 round and
4 baguette
diamonds, \$975.00



7269
Platinum
47 diamonds
\$1700.00



7266
Platinum
25 diamonds
10 calibre sapphires
\$275.00



7267
Platinum
51 diamonds
\$550.00

S. KIND & SONS, 1110 CHESTNUT ST. PHILADELPHIA

DUE TO UNUSUAL CONDITIONS PRICES ARE SUBJECT TO CHANGE

JEWELED RINGS IN BEAUTIFUL COMBINATIONS OF GEMS

7270
Platinum
genuine pearl
2 baguette
diamonds, \$110.00

7271
Platinum
genuine pearl
2 baguette
diamonds, \$180.00

7272
Platinum
genuine pearl
2 baguette
and 10 round
diamonds, \$230.00

7273
Platinum
genuine pearl
18 diamonds
\$230.00

7274
Platinum
ruby, 2 baguette
and 2 round
diamonds, \$700.00

7275
Platinum
ruby, 20
diamonds, \$165.00

7276
Platinum
ruby
12 diamonds
\$105.00

7277 Platinum, star ruby
18 diamonds, \$400.00

7278
Platinum
emerald
10 diamonds
\$215.00

7279
Platinum
carved emerald
30 diamonds
\$215.00

7281
Platinum
emerald, 2
baguette and
2 round diamonds
\$460.00

7282
Platinum emerald
8 baguette and
8 round diamonds
\$1050.00

**BEAUTIFUL
OPAL RING**
7280 A gem opal of ex-
quisite quality, fascinating
in its ever changing colors,
mounted in a platinum
ring, with 26 diamonds
\$160.00

7284
7 emeralds
Platinum
26 diamonds
\$1000.00

7285
Platinum
emerald, 10
baguette diamonds
\$2700.00

7286
Platinum
sapphire, 4
baguette diamonds
\$440.00

7287
Platinum
sapphire
62 diamonds
\$470.00

7283
Platinum
gem emerald
6 Pentacut dia-
monds, \$7100.00

7289
Platinum
sapphire
14 diamonds
\$100.00

7290
Platinum
cabochon sapphire
2 baguette and
4 round diamonds
\$700.00

7291
Platinum
aquamarine
4 baguette
diamonds, \$220.00

7292
Platinum
1 large and
8 small zircons
\$105.00

7288
Platinum
sapphire
2 square and
6 round diamonds
\$250.00

7294
Platinum
star sapphire
2 baguette
diamonds, \$400.00

7295
Platinum
star sapphire
6 baguette and
48 round dia-
monds, \$500.00

7296
Platinum
oxblood coral
black enameled
edge, 12 dia-
monds, \$265.00

7297
Platinum, opal
2 baguette and
24 round dia-
monds, \$215.00

7293
Platinum
jade, 2 baguette
and 2 round
diamonds, \$250.00

7299
Platinum, opal
2 baguette and
26 round dia-
monds, \$265.00

7300
Platinum
black opal
6 baguette and
32 round dia-
monds, \$390.00

S. KIND & SONS, 1110 CHESTNUT ST. PHILADELPHIA

DUE TO UNUSUAL CONDITIONS PRICES ARE SUBJECT TO CHANGE

WEDDING RINGS CREATED BY MASTER CRAFTSMEN



7442 Sapphire Guard Ring of modern design made of platinum and encircled with 22 genuine sapphires, calibre cut (illustration slightly exaggerated) \$55.00



7443 Jeweled wedding ring of fashionable width; platinum, encircled with 34 diamonds in channel settings; sizes 3 1/2 to 8; (illustration slightly exaggerated) \$100.00



7444 Platinum 10 diamonds \$31.00



7445 Platinum 9 diamonds \$30.00



7446 Platinum 7 diamonds \$25.00



7447 Platinum 10 diamonds \$40.00

7448

7449

FOR THE MODERN BRIDE AND GROOM
Orange Blossom baguette design

7448 Bride's ring, 18K natural or white gold \$8.50; platinum, \$15.00
7449 Groom's ring, 14K natural gold, \$17.00; 18K white gold, \$19.00



7450 Platinum 9 diamonds \$55.00



7451 Platinum 9 diamonds \$38.00



7452 Platinum 8 diamonds \$40.00



7453 Platinum 35 genuine rubies calibre cut, \$30.00



7454 Platinum flexible links 66 diamonds \$175.00



7455 Platinum 24 diamonds \$60.00



7456 Platinum 36 diamonds \$150.00



7457 Platinum 42 diamonds \$75.00



7458 Platinum 29 diamonds \$175.00



7459 Platinum 6 baguette and 18 round diamonds \$265.00



7460 Platinum 20 baguette diamonds, \$160.00



7461 Platinum 12 baguette and 12 round diamonds \$130.00



7462 Platinum 16 diamonds 24 genuine emeralds calibre cut \$240.00



7463 Platinum 36 genuine emeralds calibre cut \$295.00



7464 Platinum 28 square diamonds \$240.00



7465 Platinum 17 navette diamonds \$185.00



7466 Platinum 15 baguette diamonds \$225.00



7467 18K natural gold, narrow (shown), \$6.00 medium, \$9.00 wider, \$12.00



7468 Ribbed border, 18K natural or white gold, \$4.25 platinum, \$8.50



A NEW DESIGN



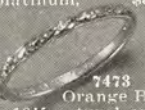
7470 Plain mill grained edge, 18K white gold, \$4.75 platinum, \$10.50



7471 Hand engraved 18K natural or white gold, \$8.50 platinum, \$11.00

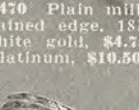


7472 Hand engraved 18K natural or white gold, \$8.50 platinum, \$12.50

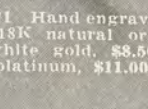


7473 Orange Blossom 18K natural or white gold, narrow (shown) \$9.00; wider, \$11.00 platinum, narrow (shown), \$13.50 wider, \$17.00

7469 A hand engraved design which has been much admired, 18K natural or white gold \$7.00; platinum \$9.00



7474 Orange Blossom beveled, 18K natural or white gold \$10.50; platinum \$16.00



7475 Orange Blossom 18K natural or white gold, \$9.00 platinum, \$17.00

S. KIND & SONS, 1110 CHESTNUT ST. PHILADELPHIA

DUE TO UNUSUAL CONDITIONS PRICES ARE SUBJECT TO CHANGE

RINGS SELECTED FOR THEIR BEAUTY AND STYLE



7352 14K green gold, black onyx or carnelian \$7.00



7353 10K natural gold Chinese jade, lapis or carnelian, \$7.00



7365 18K white gold 15 diamonds \$62.00



7370 14K green gold carnelian, \$14.00 jade, \$14.50 synthetic ruby \$16.00; synthetic sapphire, \$18.50



7375 14K green gold carnelian, \$15.00 jade, \$16.00 synthetic ruby \$16.50; synthetic sapphire, \$19.00



7380 14K green gold topaz or amethyst \$18.00



7354 Baby's ring 10K natural gold \$1.25



7357 Child's ring 10K natural gold amethyst, topaz or garnet, \$3.75



7355 Child's ring 14K white gold amethyst, topaz or garnet, \$4.50



7358 Child's ring 10K natural gold amethyst, topaz or garnet, \$7.00



7356 Baby's signet ring, 10K natural gold, \$2.00



7359 Child's ring 14K green gold sardonyx, amethyst or garnet, \$10.50



7360 14K green gold, carved Chinese jade and seed pearls, \$15.00



7361 14K green gold, Chinese jade carnelian, lapis or coral, \$12.50 turquoise matrix \$15.00



7362 18K white gold diamond, \$30.00



7366 18K white gold 11 diamonds \$58.00



7371 18K white gold zircon, \$37.00



7376 14K natural gold carnelian shell cameo, \$10.50



7381 14K green gold topaz, \$29.00 garnet, \$32.00 amethyst, \$39.00



7363 Platinum Japanese cultured pearl, 2 diamonds \$55.00



7367 14K green gold zircon and seed pearls, \$31.00



7372 10K green gold zircon, \$7.00



7377 14K green gold carnelian, black onyx or chalcedony \$16.50



7382 14K white gold engraved crystal or black onyx with diamond \$37.00



7364 18K white gold 3 diamonds \$42.00



7368 18K white gold 8 diamonds \$70.00



7373 14K white gold topaz, garnet or amethyst, \$22.00 aquamarine, \$25.00



7378 14K green gold, carved coral, carved jade or carved lapis and seed pearls \$15.00



7383 14K white gold engraved crystal or black onyx with diamond, \$26.00



7369 18K white gold 25 diamonds \$115.00



7374 18K white gold cushion shaped faceted, synthetic zircon; synthetic ruby; or synthetic sapphire and 8 diamonds, \$39.00



7379 14K white gold, cushion shaped, faceted amethyst, topaz or garnet, and 2 diamonds, \$24.00



7384 14K green gold topaz or amethyst \$21.00

S. KIND & SONS, 1110 CHESTNUT ST. PHILADELPHIA

DUE TO UNUSUAL CONDITIONS PRICES ARE SUBJECT TO CHANGE

STYLES WHICH APPEAL TO THE MASCULINE TASTE



7385 14K green gold \$22.00



7386 14K natural gold \$9.00



7387 14K green gold \$12.00



7388 14K natural gold \$5.00



7389 14K green gold \$14.50



7390 14K green gold, plain \$29.00; engraved \$33.00; eng. td. \$35.00



7391 18K white gold diamond \$70.00



7392 18K white gold diamond \$100.00



7393 14K green gold diamond \$190.00



7394 14K natural gold \$18.50



7396 10K natural gold, black onyx or sardonyx or bloodstone, \$13.00



7397 18K white gold diamond \$270.00



7395 14K natural gold extra heavy, plain \$33.00; basket weave, \$55.00; estimates for cutting of crest cheerfully furnished on request



7399 Platinum 1 large round and 2 baguette diamonds, \$650.00



7400 10K natural gold, black onyx, sardonyx or bloodstone, \$11.00



7401 10K natural gold, black onyx, or sardonyx intaglio, \$18.00



7402 10K natural gold, black onyx, or sardonyx or bloodstone \$23.00



7398 Platinum diamond \$425.00



7404 10K natural gold, black onyx or sardonyx intaglio, \$16.00



7405 10K natural gold, black onyx or sardonyx or bloodstone \$16.50



7406 10K natural gold, black onyx or sardonyx intaglio, \$24.00



7407 10K green gold, amethyst topaz or garnet \$25.00



7403 10K natural gold, black onyx, \$12.00; with inlaid silver initial \$15.00



7409 10K natural gold, black onyx, sardonyx or bloodstone, \$19.00



7410 10K natural gold, black onyx, sardonyx or bloodstone, \$20.00



7411 14K green gold, sardonyx or black onyx \$33.00 bloodstone, \$35.00



7412 14K green gold, black onyx, sardonyx or bloodstone, \$38.00



7413 14K natural gold, black and white onyx cameo, \$48.00



7414 14K green gold hammered topaz, \$49.00 garnet, \$50.00 amethyst, \$56.00



7415 14K white gold synthetic sapphire and 2 diamonds \$36.00

S. KIND & SONS, 1110 CHESTNUT ST. PHILADELPHIA

DUE TO UNUSUAL CONDITIONS PRICES ARE SUBJECT TO CHANGE

GENUINE PEARLS, BROOCHES AND NECKLACE CLASPS

7416 3 Pearls graduated, 14K chain, \$5.00

7417 5 Pearls graduated, 14K chain, \$7.50

7418 8 Pearls graduated, 14K chain, \$10.00

7419 5 Pearls uniform, 14K chain, \$15.00

7420 187 Oriental pearls, graduated platinum clasp with 1 diamond \$275.00

7421 Platinum clasp, 4 navette diamonds \$110.00

7422 Platinum clasp, 1 baguette diamond, 4 Oriental sapphires \$250.00

7423 Platinum clasp, 3 diamonds \$55.00

7424 Platinum clasp, 5 diamonds \$25.00

7425 Platinum clasp, 1 navette 16 round diamonds \$175.00

7426 Platinum clasp, 2 diamonds, \$15.00

7428 10 Pearls graduated, 14K chain, \$20.00

7429 12 Pearls graduated, 14K chain, \$25.00

7430 15 Pearls graduated, 14K chain, \$35.00

7431 19 Pearls graduated, 14K chain, \$50.00

7427 209 Oriental pearls graduated, platinum clasp 2 diamonds, \$160.00

7432 173 Oriental pearls graduated, platinum clasp 10 diamonds, \$500.00



\$0.50		\$0.75
\$1.00	\$1.50	\$2.00
\$3.00	\$5.00	\$7.50
\$10.00	\$15.00	\$20.00
\$25.00	\$35.00	\$50.00



7433 Platinum brooch 8 baguette, 48 round diamonds, \$675.00



7435 Platinum brooch 34 diamonds, \$160.00



7434 Platinum brooch 3 diamonds, \$115.00



7438 Platinum brooch 2 baguette, 1 large and 42 smaller round diamonds, \$350.00

7436 Platinum brooch 39 diamonds, \$150.00



7437 Platinum brooch 1 large, 32 smaller diamonds, \$205.00



7441 Platinum brooch 3 emerald cut, 30 square 4 baguette and 146 round diamonds \$2200.00



7439 Platinum brooch 5 large and 136 smaller diamonds, \$800.00



7440 Platinum brooch 1 large and 36 smaller diamonds, \$300.00

Start an Add-A-Pearl necklace for your little girl. The investment does not necessarily have to be very large. Additional pearls may be added on gift occasions. They are matched perfectly in quality and color. The Add-A-Pearl necklace consists of a group of Oriental pearls, strung on a silk cord and inserted in a fine neck chain. It is a gift which will be cherished forever.

S. KIND & SONS, 1110 CHESTNUT ST. PHILADELPHIA

DUE TO UNUSUAL CONDITIONS PRICES ARE SUBJECT TO CHANGE

NOVEL JEWELRY FOR STYLISH WOMEN



7787 Pendant
14K white gold
including 16
inch neck chain
engraved crystal
with 1 diamond
\$30.00
3 diamonds
\$34.00



7788 Pendant
14K white gold
1 diamond
\$14.50



7789 Pendant, 14K
white gold, platinum
top, black onyx
with diamond, \$17.50
15 inch neck chain
\$2.50; complete
\$20.00



7790 Dress Clip
14K white gold
\$15.00



7791 Pendant, 14K
white gold
engraved crystal
with diamond
including 16 inch
neck chain, \$18.50



7792 Pendant, 14K
white gold
platinum top, 1
diamond, \$24.00
2 diamonds, \$30.00



7793 Brooch, 14K
white gold, diamond
in platinum setting
\$21.00



7794 Brooch, 14K
white gold, platinum
top, diamond, \$17.50;
without diamond, \$11.00



7795 Brooch, 10K
white gold, diamond
\$10.50; without
diamond, \$7.00



7796 Bracelet, 7 inches, 14K green gold, 5 genuine zircons, \$60.00



7797 Bracelet, 7 inches, 14K white gold, platinum top, diamond, \$41.00; 2 diamonds and sapphire, \$44.00; 3 diamonds, \$55.00



7798 Bracelet, 7 inches, 14K green gold, platinum top, 5 engraved crystals with 5 diamonds, \$87.00; 5 engraved crystals, with 3 diamonds and 2 sapphires, \$90.00



7799 Brooch, 10K
natural gold, carved
Chinese jade, carnelian
or lapis, \$7.50



7800 Brooch, 10K
white gold, diamond
\$14.50



7801 Brooch, 14K green gold
platinum top and sides, 1 dia-
mond, \$45.00; 3 diamonds, \$69.00
5 diamonds, \$94.00



GENUINE ZIRCON JEWELRY—14K green gold mountings.
7802 Earrings for pierced or unpierced ears, 2 genuine Zircons encircled with genuine seed pearls, \$50.00 pair; without seed pearls, \$48.00 pair
7803 Pendant, including 17 inch neck chain, 2 genuine zircons encircled with genuine seed pearls, \$42.00; without seed pearls, \$39.00
7804 Ring, genuine zircon encircled with genuine seed pearls, \$20.00; without seed pearls, \$18.00
7805 Bracelet, 7 inches, 4 genuine zircons encircled with genuine seed pearls, \$40.00; without seed pearls, \$37.00

S. KIND & SONS, 1110 CHESTNUT ST. PHILADELPHIA

DUE TO UNUSUAL CONDITIONS PRICES ARE SUBJECT TO CHANGE

CHOOSE JEWELRY—ALWAYS A PLEASING GIFT



7806 Brooch, 14K green gold, platinum top and sides, 1 diamond, \$40.00; 3 diamonds, \$62.00; 3 diamonds and 6-calibre cut sapphires, \$83.00



7807 Brooch, 14K natural and green gold, \$31.00



7808 Brooch, 14K white gold platinum top, engraved crystal with 3 diamonds, \$85.00



7809 Pendant, 10K white gold, amethyst or synthetic emerald \$8.50; 16 inch cable link neck chain, \$3.75; complete, \$12.25



7810 Earrings for pierced or unpierced ears, 10K white gold, 2 diamonds \$21.00 pair



7811 Earrings for pierced or unpierced ears, 14K green gold, 8 pear shaped and 8 round faceted amethysts, \$44.00 pair



7812 Pendant 10K white gold 1 diamond, \$9.50



7813 Pendant, 14K white gold, platinum top, including 16 inch neck chain: 1 diamond, \$50.00 6 diamonds, \$85.00



7814 Bracelet, 7 inches, 14K white gold, satin finish, 1 diamond, \$35.00; diamond and 2 sapphires, \$46.00; 3 diamonds, \$50.00; 5 diamonds, \$65.00



7815 Bracelet, 7 inches, 14K white gold, 2 diamonds and sapphire, \$35.00 3 diamonds, \$40.00



7816 Bracelet, 7 inches, 14K white gold, platinum top and sides 3 diamonds, \$115.00; 5 diamonds, \$150.00



7819
FLOATING
OPAL
JEWELRY

7817

7818

7820

These articles are made with transparent spheres containing crystal clear liquid in which float beautiful pieces of opals, reflecting the various color combinations.

7817 Pendant, 14K natural green or white gold, very small, \$8.00; small, as shown, \$10.00; medium, \$12.00; large, \$16.00; 15 inch cable link neck chain, \$2.50

7818 Earrings, for pierced or unpierced ears, 14K natural, green or white gold, small, \$22.00 pair; medium, as shown, \$24.00 pair; large, \$26.00 pair

7819 Ring, 14K solid shank, plain green gold, \$18.50; pierced, as shown, in natural or green gold, \$18.50; pierced, in white gold, \$20.00

7820 Double drop pendant, 14K natural, green or white gold, including 15 inch cable link neck chain: small, \$20.00; medium, as shown, \$22.00; large, \$24.00



7821 Brooch, 14K white gold genuine zircon and 4 diamonds, \$36.00



7822 Brooch, 14K white gold 1 diamond, \$24.00



7823 Brooch, 14K white gold platinum top, 1 diamond, \$39.00; 3 diamonds, \$58.00

S. KIND & SONS, 1110 CHESTNUT ST. PHILADELPHIA

DUE TO UNUSUAL CONDITIONS PRICES ARE SUBJECT TO CHANGE

GIFTS FOR BRIDESMAIDS, BIRTHDAYS AND GRADUATIONS



7824

7824 Pendant with 15 inch necklace 14K green gold, carved carnelian, or lapis with 8 round beads in necklace \$40.00; carved Chinese jade and 8 round beads, \$59.00

7825 Bracelet, 7 inches. 14K green gold, 3 carved carnelians or lapis \$20.00; 3 carved Chinese jade \$30.00



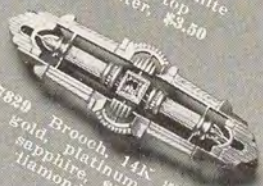
7826 Brooch, 14K white gold, \$3.50



7827 Spot pin, 14K white gold, platinum top, with delicate black enameled border, pearl in center, \$2.25



7828 Spot pin, 14K white gold, platinum top sapphire in center, \$3.50



7829 Brooch, 14K green gold, platinum top sapphire, \$14.00; diamond, \$17.00



7830 Drop pin, 14K natural gold, with white gold bands and imitation crystal showing design of horsehead showing halved center, \$5.50; or wire crystal, \$7.00 without



7831

7832

7831 Earrings for pierced or unpierced ears, 10K natural gold, 2 pear shaped and 2 round carved Chinese jade, carnelian, or lapis \$7.50 pair

7832 Pendant, 10K natural gold, including 15 inch fancy link neck chain carved Chinese jade, carnelian, or lapis and 4 round beads in necklace, \$7.50

7833 Bracelet, 7 inches, 10K natural gold, carved Chinese jade, carnelian or lapis and 4 round beads, \$7.50



7835 Bracelet, 7 inches, 14K green gold, 3 stones, \$20.00; 5 stones, \$25.00



7834 Identification bracelet, 6 1/2 inches sterling silver, \$1.00; 10K natural or green gold, \$6.00



7836 Necklace, 15 inches, 14K Roman finish, \$65.00



7837 Flexible sport bracelet, 7 inches, with imitation crystal showing horsehead design, sterling silver, \$6.00; 14K natural gold, \$11.00



7838 Sport Bracelet, 7 inches, sterling silver, 5 imitation crystals, \$3.75



7839 Sport bracelet, 7 inches sterling silver, imitation crystal, showing subjects of dogs or horsehead, \$4.00

S. KIND & SONS, 1110 CHESTNUT ST. PHILADELPHIA

DUE TO UNUSUAL CONDITIONS PRICES ARE SUBJECT TO CHANGE

QUALITY JEWELRY MODERATELY PRICED



7841 Ring, 14K natural gold, black onyx with diamond centre, \$7.00

7843 Baby charm, 14K green gold engine-turned, including 13 inch cable neck link chain, \$4.80

7844 Child's bracelet, 10K natural gold, engine-turned, has secret lock and safety guard, \$8.00

7847 Hat pin of bow design, 14K natural and rose gold, Airdale ornament, \$10.50

7848 Brooch, 14K green or white gold engine-turned, without bowknot, \$4.75

7840 Barrings, 14K plain roman or polished green gold, \$14.00 pair; engraved green gold, \$16.00 pair

7842 Pendant, 10K natural gold, black onyx with diamond centre, including a 16 inch fancy link neck chain, \$9.75

7845 Brooch, 14K natural gold, carnelian shell cameo, small as shown, \$9.00; medium, \$10.50

7851 Handy pins, 14K white gold pierced platinum top, \$4.50 pair

7846 Brooch, 14K green gold, top green platinum leaves, enameled flower with diamond centre, \$18.50

7854 Irish shawl pin, quite the rogue, with sterling silver, with imitation crystal showing horseheads or dog design, \$4.50

7849 Ladies' scarf pin, sterling silver with imitation crystal showing subjects, Fox Terrier, wire hair, Scottie, \$3.50

7850 Handy pins, 14K plain roman or natural gold, engraved natural gold, \$4.00 pair

7852 Ladies' muffler pin, 3 1/2 inches long, sterling silver with two Scotties, \$3.00

7853 Sport pin with Scottie, 14K, \$15.50

7855 Bracelet, 7 inches, 14K green gold, fluted links, \$12.50

7856 Bracelet, 7 inches, 14K natural gold, with 7 genuine stones, Scarab design, alternating colors, \$22.00

7857 Bracelet, 7 inches, 14K green gold, with 3 carved Chinese jade, carnelian or lapis, \$21.00

7858 Graduated Richelieu pearl necklace, including 14K white gold clasp, M quality \$9.75, C quality \$12.50, XXX quality \$14.00, \$21.50, \$25.50

7859 Bracelet, 7 inches, 10K green gold, with carved Chinese jade, carnelian or lapis and 4 round beads, \$7.50

7853 Sport pin with Scottie, 14K, \$15.50

7855 Bracelet, 7 inches, 14K green gold, fluted links, \$12.50

7856 Bracelet, 7 inches, 14K natural gold, with 7 genuine stones, Scarab design, alternating colors, \$22.00

7857 Bracelet, 7 inches, 14K green gold, with 3 carved Chinese jade, carnelian or lapis, \$21.00

7858 Graduated Richelieu pearl necklace, including 14K white gold clasp, M quality \$9.75, C quality \$12.50, XXX quality \$14.00, \$21.50, \$25.50

7859 Bracelet, 7 inches, 10K green gold, with carved Chinese jade, carnelian or lapis and 4 round beads, \$7.50

7853 Sport pin with Scottie, 14K, \$15.50

7855 Bracelet, 7 inches, 14K green gold, fluted links, \$12.50

7856 Bracelet, 7 inches, 14K natural gold, with 7 genuine stones, Scarab design, alternating colors, \$22.00

S. KIND & SONS, 1110 CHESTNUT ST. PHILADELPHIA

DUE TO UNUSUAL CONDITIONS PRICES ARE SUBJECT TO CHANGE

EMBLEM JEWELRY, CHARMS AND BRACELETS



7319 Rainbow ring plain shank, with black and white enameled top and applied enameled emblem, green gold, 10K, \$6.00
14K, \$7.50

7320 Rainbow pin enameled, 10K green or natural gold, \$3.75; 14K white gold, \$4.75



7324 Goat charm, 14K green gold \$2.50

7325 Elephant charm, 14K green gold \$3.50

7326 Sail boat charm 14K roman gold, \$7.50

7327 Golf ball charm 14K roman gold, \$8.00

7328 Beverage shaker charm, 14K green gold, \$5.00



7330 Eastern Star pin, 14K white gold enameled 1 diamond, \$16.00 without stone \$6.00


7331 Eastern Star ring, 14K natural gold, black onyx with raised enameled emblem \$12.00




7321 Official De Molay pin, enameled, 10 Oriental half pearls size shown, 10K natural gold \$3.85; larger, \$5.85; size shown 14K white or green gold, \$5.85; larger, \$7.85

7322 Official De Molay ring sterling silver \$4.95; 10K natural gold, \$10.50

7323 Official De Molay Sister pin, black enameled panel, pearl center, \$3.05



7329 Bracelet for charms 7 inches, 14K green gold, \$7.50



7332 4th degree K. of C. button, 14K green gold enameled, 1 diamond, \$17.50 without stone, \$4.25

7333 K. of C. button, 14K white gold enameled \$3.75

7334 K. of C. ring, 14K green gold, black onyx with raised white gold enameled emblem, \$35.00



7335 Sport bracelet, 7 inches, 14K roman and green gold, \$30.00



7336 Knight Templar button 14K white gold \$3.00

7337 Aviation button, 14K white gold \$3.75

7338 Chapter button, 14K green gold enameled \$3.50

7339 Rotary button, 14K green gold enameled 1 diamond, \$16.50 without stone, \$3.25

7340 Odd Fellows button, 14K white gold, \$3.25



7341 Shrine button, 14K green gold platinum faced without stones \$4.75; 1 diamond, \$21.00; 5 diamonds \$41.00

7342 Shrine button, 14K green gold, platinum faced without stone \$5.00; 1 diamond, \$15.00



7345 Blue Lodge slipper pin, 14K white or green gold, without stone, \$3.50; 1 diamond, \$8.50

7344 Blue Lodge button, enameled 14K green or white gold, without stone \$2.25; white gold with diamond \$5.00

7346 Blue Lodge button, enameled 14K platinum faced without stone, \$3.75 1 diamond, \$18.50



7340 Consistory button enameled, 14K green or white gold \$3.75, 14K platinum faced, \$6.50

7350 Consistory ring, enameled, 14K green gold platinum faced emblem, without stone, \$83.00; 1 diamond, \$90.00



7343 Shrine ring, 14K green gold, enameled raised platinum faced emblem, \$37.00



7347 Blue Lodge ring, 10K green gold, black onyx with raised 14K white gold enameled emblem \$16.50

7348 Blue Lodge ring, 14K green gold enameled without stone \$37.00; 1 diamond \$50.00

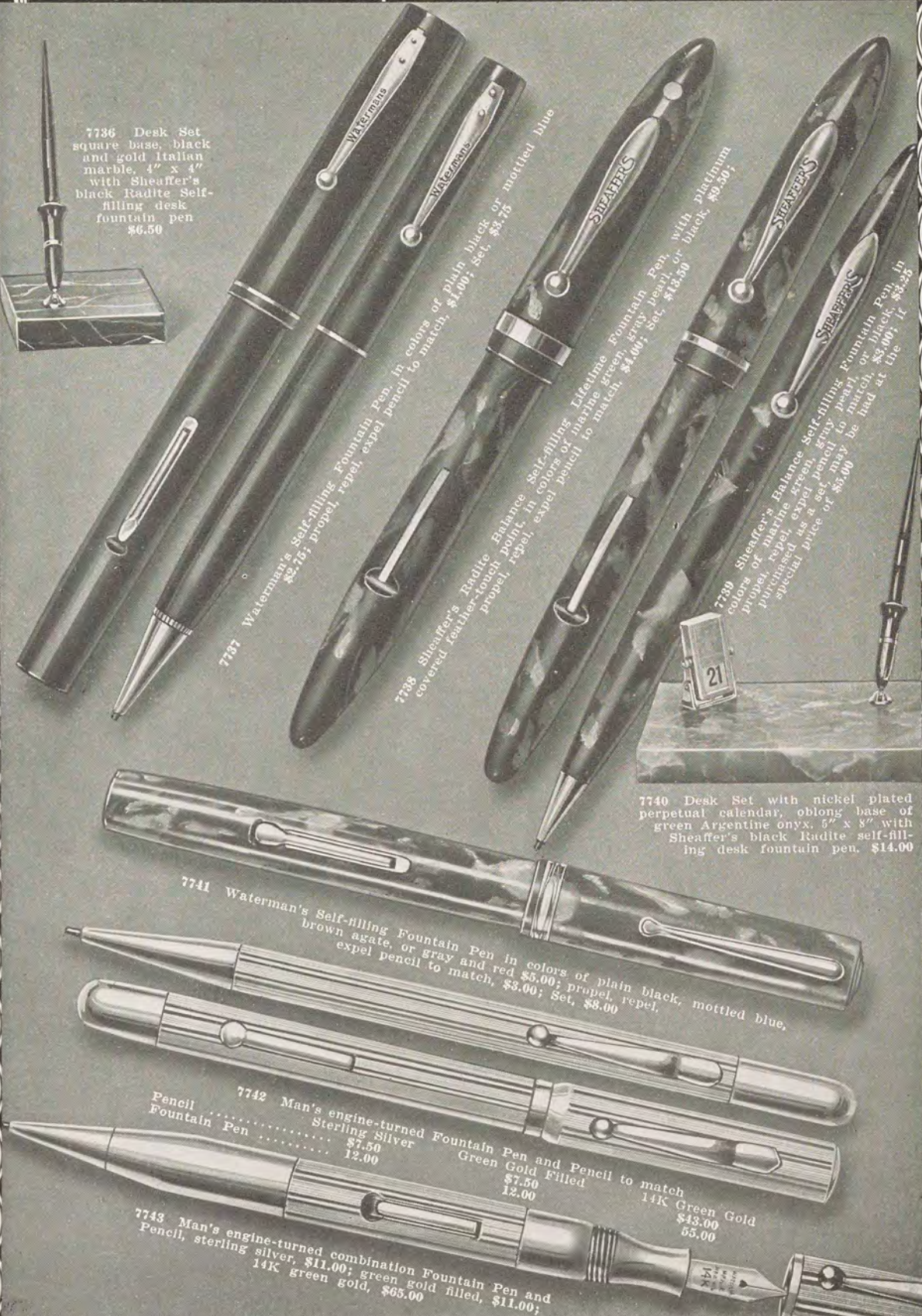


7351 Consistory ring enameled emblems, 14K green gold, platinum faced eagles, 1 diamond, \$160.00; mounting furnished for your diamond weighing up to 1 carat for \$69.00

S. KIND & SONS, 1110 CHESTNUT ST. PHILADELPHIA

DUE TO UNUSUAL CONDITIONS PRICES ARE SUBJECT TO CHANGE

FOUNTAIN PENS, PENCILS AND DESK SETS



7736 Desk Set square base, black and gold Italian marble, 4" x 4" with Sheaffer's black Radite Self-filling desk fountain pen \$6.50

7737 Waterman's Self-filling Fountain Pen, in colors of plain black or mottled blue \$2.75; propel, repel, expel pencil to match, \$1.00; Set, \$3.75

7738 Sheaffer's Radite Balance Self-filling Lifetime Fountain Pen with platinum covered leather-voch point, in colors of marine green, gray pearl, or black, \$9.50; propel, repel, expel pencil to match, \$2.00; Set, \$11.50

7739 Sheaffer's Balance Self-filling Fountain Pen with platinum colors of marine green, gray pearl, or black, \$9.50; propel, repel, expel pencil to match, \$2.00; Set, \$11.50

7740 Desk Set with nickel plated perpetual calendar, oblong base of green Argentine onyx, 5" x 8" with Sheaffer's black Radite self-filling desk fountain pen, \$14.00

7741 Waterman's Self-filling Fountain Pen in colors of plain black, mottled blue, brown agate, or gray and red \$5.00; propel, repel, expel pencil to match, \$3.00; Set, \$8.00

7742 Man's engine-turned Fountain Pen and Pencil to match
 Pencil \$7.50
 Fountain Pen \$7.50
 Sterling Silver 12.00
 Green Gold Filled 12.00
 14K Green Gold \$43.00
 14K Green Gold \$5.00

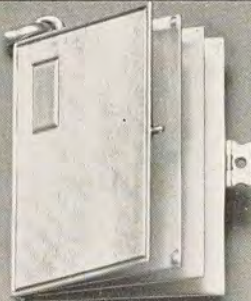
7743 Man's engine-turned combination Fountain Pen and Pencil, sterling silver, \$11.00; green gold filled, \$11.00; 14K green gold, \$65.00

S. KIND & SONS, 1110 CHESTNUT ST. PHILADELPHIA

DUE TO UNUSUAL CONDITIONS PRICES ARE SUBJECT TO CHANGE

MEN'S GIFTS, USEFUL AND APPRECIATED

Photo case, engine-turned, with two inner leaves, size 1 3/8" x 1 1/8"



Initials or monogram engraved free, slight additional charge for inscription on inside

7744 Waldemar chain, platinum 5 Oriental pearls, \$125.00

7746 Waldemar chain, 14K green or white gold, \$44.50

7747 Waldemar chain, platinum \$34.00

7745 One of the most cherished gifts—can be furnished with as many leaves as desired, prices on request. This one with 4 leaves is the most popular. It is arranged to hold 6 photographs. Sometimes, however, the inside cover is used for engraving of inscription. As illustrated, sterling silver, \$10.00; 14K green or natural gold, \$33.00. Extra charge for photographing picture on leaf is \$3.00 each

7748 Waldemar chain, 14K green or white gold, \$9.50

7749 Waldemar chain, 14K natural, green or white gold, \$17.50

7750 Waldemar chain, 10K natural, green or white gold, \$7.00

7751 Key holder with blank key, 14K green gold, engine-turned \$37.00



7753 Engine-turned extension pencil, sterling silver, \$4.00; green gold filled, \$4.00; 14K green gold, \$31.00

7754 Pocket knife, 10K engine-turned, 1 blade and file, green gold, \$6.50; white gold, \$7.50

7752 Key chain with padlock, 14K natural gold, \$16.00

7755 Pocket knife, 14K green gold, engine-turned, 1 blade, file and scissors, \$26.00

7756 Pocket knife, 14K green gold, engine-turned, 2 blades and file, \$14.00



7758 Pocket knife, 14K green or white gold, engine-turned, 2 blades and file, \$11.00

7757 Plain harness buckle, sterling silver \$5.50; 14K green gold, \$34.00

1" leather belts, smooth cowhide, \$1.00; pin seal, \$2.00

7759 Buckle, engine-turned sterling silver, \$3.00; 14K green gold, \$40.00



7760 Key ring 1 1/4" diameter 14K green gold, \$9.50

7761 Buckle, sterling silver overlaid with 14K green gold, \$7.00

S. KIND & SONS, 1110 CHESTNUT ST. PHILADELPHIA

DUE TO UNUSUAL CONDITIONS PRICES ARE SUBJECT TO CHANGE

JEWELRY FOR THE DISCRIMINATING MAN



7762 Sport chain 5 inches long 14K natural, green or white gold, engine-turned spring ring \$12.50



7763 A matched set—10K green gold tie clip, \$7.00; collar holder, \$4.00 set, \$11.00



7764 Money clip, for the man who has almost everything—14K green gold \$12.00



7765 Monogrammed tie clip with individual initials carved specially to order, choice of 14K natural, green or white gold, \$12.00



7775

7776

7766 Tie clip, 14K natural or green gold, as shown, \$8.00; without shield, \$6.50



7767 Collar pin, 14K green gold, engine-turned, \$7.00



7768 Soft collar holder, 14K natural gold, \$6.00



7769 Links, 10K natural or white gold, engine-turned \$7.50 pair



7772 Stud 14K gold genuine Oriental pearl, \$150.00



7777

SPORT JEWELRY

14K green gold, with imitation crystals, showing heads of Terrier, Police or Pointer dogs, Fox or Horse

7775 Links, \$8.50 pair

7776 Money clip, \$8.00

7777 Tie clip, \$8.00



7779 Scarf pin 14K genuine Oriental pearl \$85.00



7782 Links, 14K green gold, engine-turned, \$31.00 pair



7770 Links, 14K natural or white gold, engine-turned \$12.00 pair



7773 Kremenz collar button for front or back, natural gold, 10K \$2.00; 14K \$2.50



DRESS SET Excellent Value

7778 Gold filled, jet, white or smoked Mother-of-Pearl, choice of octagon or round design.

3 Studs \$1.00
4 Vest buttons \$2.25
1 Pair link buttons... \$2.25
Set sold complete for \$5.00



7780 Scarf pin platinum, 1 diamond, \$40.00



7783 Links, 14K green gold platinum faced 2 diamonds \$62.00 pair



7771 Links, 14K natural or white gold, engine-turned \$13.00 pair



7774 Larter collar button for front or back, natural gold, 10K \$2.00, 14K \$2.75



7781 Scarf pin platinum, 5 diamonds, \$55.00



7784 Links, 14K green gold platinum faced enameled, 2 diamonds, \$100.00 pair



7785 Dress set, jet white, or smoked Pearl, fancy 14K white gold border natural gold connections

	Plain	Pearl	Diamond
	Centre	Centre	Centre
Studs, set of 3.....	\$5.00	\$10.50	\$22.00
Vest buttons, 4.....	8.50	17.00	35.00
Link buttons, pair....	7.00	15.00	31.00
Complete set.....	20.00	42.50	88.00

Mother-of-Pearl with 10K

7786 Dress set, smoked Mother-of-Pearl, gold back, platinum top, with diamond centre

Studs, set of 3.....	\$45.00
Vest buttons, 4.....	71.00
Link buttons, pair.....	84.00
Complete set.....	200.00

S. KIND & SONS, 1110 CHESTNUT ST. PHILADELPHIA

DUE TO UNUSUAL CONDITIONS PRICES ARE SUBJECT TO CHANGE

PRACTICAL GIFTS ARE ALWAYS ACCEPTABLE

A name or one line stamped in gold without extra charge; additional stamping 50c per line



7860 Bridge set fancy two-tone leather, gold tooled 2 decks of cards score pad and pencil $3\frac{1}{2}'' \times 5''$ \$3.25



7861 2 Decks of cards in a box for \$1.00; these cards are especially good values. We ask permission to send substitute patterns when necessary



7862 Zipper tobacco pouch with separate compartment for tobacco and pipe, $3\frac{1}{2}'' \times 6\frac{1}{2}''$, brown or black bison goat, \$3.50; Waldorf grain seal, \$3.50; ostrich, \$4.75 genuine briar pipe, \$.50



7863 Curved flask fits pocket comfortably. Glass bottle with nickel plated stopper and cap. Black and tan cowhide cover. 4 oz. $5\frac{1}{2}'' \times 3\frac{1}{2}''$, \$3.50 6 oz. $7\frac{1}{2}'' \times 4\frac{1}{2}''$ \$4.25; 8 oz. $8\frac{1}{2}'' \times 4\frac{1}{2}''$ \$5.00



7864 Mirakel' vest pocket sport glasses, weight with case, 2 1/2" height with case on. This De Luxe model is so compact that it will easily fit in vest pocket. Quality lens according to the tremendously wide field of 250 yards at 1000 yards distance. Can be used continuously without the slightest eye strain. A remarkable glass for viewing sport events at close range. Quality leather case, black Morocco, polished, black cowhide or brown anakoskin. Equipped with Talonette slide fastener. \$17.50



7865 Cigarette case holding pack of 20 cigarettes, $3\frac{1}{4}'' \times 2\frac{1}{4}''$, 2 14K green gold corners, lizard goat, \$2.50; hairline seal or ostrich, \$3.50 without corners deduct, \$1.00 in each case



7866 Hip case, dull pin seal or ostrich with removable pass compartment and case for cards, $4\frac{1}{2}'' \times 3\frac{1}{2}''$, 2 14K green gold corners, \$6.50 without corners \$5.00



7867 Card case $2\frac{3}{4}'' \times 4''$, 2 14K green gold corners, Waldorf grain seal \$3.50; ostrich, \$4.75 without corners deduct \$1.00 in each case



7870 Hip case, ostrich or hairline seal, with pass compartment and case for cards, $4\frac{1}{2}'' \times 3\frac{1}{2}''$, 2 14K green gold corners, \$2.50 without corners, \$1.75 key case with 6 hooks $3\frac{1}{2}'' \times 2\frac{1}{2}''$, leather covered button and 2 14K green gold corners, \$2.50 without corners, \$1.75



7868 Clear case $5'' \times 3\frac{1}{2}''$ lizard goat, \$3.00; ostrich, \$4.75; with 14K oval shield if desired, \$1.50 extra



7869 Busch Seist field glasses, aluminum alloy covered with black vulcanite, black japanned mountings $4\frac{1}{4}''$ high with 1 1/2" object lenses—power of distance four times that of the naked eye and field of view at 1000 yards covering an area of 110 yards, provided with loops and neck strap, in black leather field case with carrying strap \$19.00

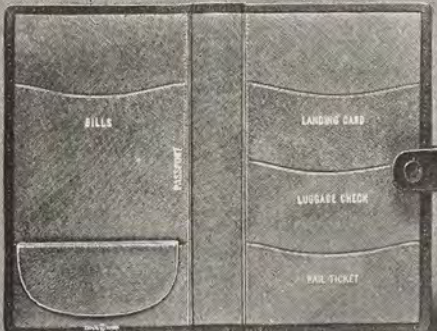


7871 Hip case hairline seal or ostrich with removable pass compartment and space for cards, $4\frac{1}{2}'' \times 3\frac{1}{2}''$, 4 14K green gold corners, \$5.00; without corners, \$2.50; small block initials sterling silver, \$3.35 each 14K, \$1.00 each

7872 Metal cigarette case, holding 10 cigarettes, $3\frac{3}{4}'' \times 2\frac{1}{4}''$ overlaid with ostrich black pin seal, blue tan, or green ecraze calfskin, \$3.50



7873 Cigarette case holding 20 cigarettes, $4\frac{1}{2}'' \times 3\frac{1}{2}''$ 14K green gold shield lizard goat, \$4.75; hairline seal, \$7.00; ostrich, \$9.00 without shield, lizard goat, \$3.50; hairline seal \$5.00; ostrich, \$6.00



7874 Passport case with folding snap button, measures $4\frac{1}{2}'' \times 6\frac{1}{2}''$ when closed, black lizard grained goat, \$5.00 black pin grained seal, \$7.00 ostrich, \$9.00



7875 Letter case, 2 open ends, $7\frac{1}{2}'' \times 4\frac{1}{2}''$, 2 14K green gold corners, lizard goat, \$3.25; hairline seal, \$4.50; ostrich, \$7.00; without corners lizard goat, \$1.75 hairline seal, \$3.00 ostrich, \$5.00



7876 Brief case, zipper style, leather lined with 2 pockets, $16'' \times 11''$ black or brown Mandruka cowhide, \$5.00; black baboon grained cowhide, \$7.00; black or brown walrus seal, \$10.00

S. KIND & SONS, 1110 CHESTNUT ST. PHILADELPHIA

DUE TO UNUSUAL CONDITIONS PRICES ARE SUBJECT TO CHANGE

INEXPENSIVE AND USEFUL GIFTS OF LEATHER



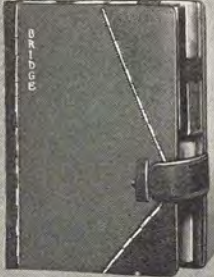
7877 Jewel case, rose, blue, tan green, or brown stag grain skiver gold tooled trimmings, with lift out tray, 4 1/2" x 3 3/4" x 2 1/2", \$3.50
 6 1/4" x 4 1/4" x 2 1/2", \$5.00
 7 1/4" x 5 5/8" x 2 3/4", \$6.50
 7 1/2" x 6 1/4" x 3", \$10.00



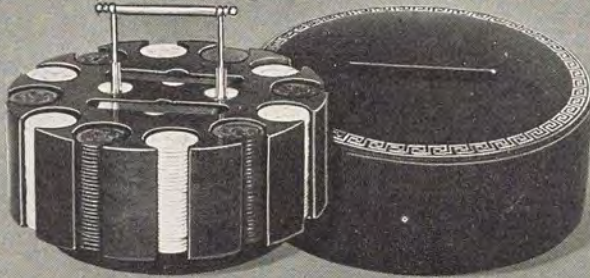
7878 Brush set, brown shark grained cowhide, zipper style case, green leather lined, fitted with natural ebony hair brush, cloth brush, comb and nail file, 7" x 3" x 1 1/2", \$5.00



7879 Gentleman's jewel case, green or tan stag grained skiver, 5" x 3 1/2" x 1 1/4", \$3.75



7880 Bridge set, fancy two-toned tan leather 4 decks cards, 2 score pads and 2 pencils, 7 1/2" x 5 1/2", \$6.50



7881 Revolving block type mahogany game set, with gold plated sliding handle, contains 300 chips, 1 1/2" in diameter, 2 decks of cards gold tooled Morocco leather cover, 10" in diameter, 4 1/2" high, complete, \$25.00



7882 "My trip abroad" book, pink, blue, tan or green ecrase finished leather, gold tooled including lock and key, 6 1/2" x 4 1/4", \$3.50



7883 Man's traveling set zipper style case, with fittings to match in color, size when closed, 10" x 6 3/4" x 1 3/8" Shark grained cowhide, black \$7.00; brown, \$8.00



7884 Man's toilet kit, zipper style case black or brown Shark grained cowhide rubberized cloth lining, with fittings to match in color, 4 1/2" x 10", contains military brush, comb, toothbrush holder and razor set, \$3.75



7885 Man's traveling set zipper style case, with fittings to match in color size when closed, 8 1/4" x 7 1/2" x 1 3/8", shark grained cowhide, black, \$5.00 brown, \$6.00



7886 Man's traveling set, zipper style case, with fittings to match in color, size when closed, 10" x 7 1/2" x 2 1/8", Shark grained cowhide, black, \$10.00; brown, \$10.75



7887 A fitted traveling bag, 20" long black leather, with chromium plated black enameled fittings, \$29.00



7888 Lady's toilet set, zipper style case, blue, brown, or green stag grained leather silk lined, with fittings to match in color, size when closed, 10 1/2" x 6 1/2" x 2" \$10.00

S. KIND & SONS, 1110 CHESTNUT ST. PHILADELPHIA

DUE TO UNUSUAL CONDITIONS PRICES ARE SUBJECT TO CHANGE

ATTRACTIVE BRACELETS FOR WOMEN'S WATCHES

These bracelets are arranged to fit most any watch, particularly the modern baguette watch. On this style the ends are much like No. 7103



7100 A charming bracelet of platinum enhanced with 75 diamonds, \$500.00



7101 A fashionable design, made entirely of platinum with 47 diamonds, \$305.00



7102 18K white gold mesh cord bracelet, platinum ends, with 3 diamonds in each end, \$75.00; without diamonds and with plain pipe ends, \$30.00. Can also be furnished in 14K white, green or yellow gold with plain pipe ends and without diamonds for \$18.00, or with black silk cord instead of metal cord for \$10.00



7103 An artistic bracelet of open links, 14K white gold with diamond in each end, \$45.00; without diamonds, \$26.00



7104 18K white gold mesh bracelet with platinum ends containing 2 diamonds in each end, \$84.00; or without diamonds and plain pipe ends, \$44.00; 14K white or yellow gold with plain pipe ends and without diamonds, \$34.00



7105 An excellent value, bracelet of 14K white, green or yellow gold, \$12.00

INEXPENSIVE BRACELETS OF SMART DESIGNS



7106 White, green or yellow gold filled, open-link bracelet, with adjustable center catch, \$6.00



7107 Sterling silver bracelet with center catch, \$5.00



7108 White gold filled, open-link bracelet, with a collapsible, self-adjusting ratched clasp, \$4.00



7109 White green or yellow gold filled, open-link bracelet with a collapsible, self-adjusting ratched clasp, \$3.00



7110 White, green or yellow gold filled, bracelet of dainty design with a collapsible, self-adjusting ratched clasp, \$3.50

S. KIND & SONS, 1110 CHESTNUT ST. PHILADELPHIA

DUE TO UNUSUAL CONDITIONS PRICES ARE SUBJECT TO CHANGE

JEWELED WATCHES, INDIVIDUAL IN DESIGN



S. KIND & SONS
 Extraordinary value
 7111 Platinum case, 30
 diamonds fitted with an
 exceptional 17 jeweled
 movement, silk cord wristlet
 with 14K white gold
 attachments, \$75.00

S. KIND & SONS
 7112 Platinum case, 28 diamonds
 17 Jeweled movement, ribbon
 wristband, an especially good
 value, \$125.00

WALTHAM
 7114 Platinum case, 34 round and 2
 navette diamonds, 17 Jeweled movement
 silk cord wristlet with 14K white gold
 attachments, \$150.00

GRUEN
 7113 Platinum case, 33 diamonds, 17
 Jeweled precision movement, silk cord
 wristlet with white gold filled
 attachments, \$135.00

ELGIN
 7116 Platinum case, 40 round, and 2 baguette
 diamonds, 17 Jeweled movement, silk cord
 wristlet with 14K white gold attachments,
 \$135.00

MOVADO ESQUIRE
 7115 Platinum case, 26 diamonds, 17 Jeweled
 movement, silk cord wristlet with
 gold attachments, \$170.00

HAMILTON
 7118 Platinum case, 38 diamonds, 17
 Jeweled movement, silk cord wristlet
 with platinum attachments, \$285.00

MOVADO
 7117 Platinum case, 32 diamonds, 17 Jeweled
 movement, silk cord wristlet with
 gold attachments, \$225.00

LONGINES
 7120 Platinum case, 36 diamonds, 15
 Jeweled movement, ribbon wrist-
 band, \$325.00, same style
 with 18K white gold
 back, \$285.00

HAMILTON
 7119 Platinum case, 48 diamonds, 17
 Jeweled movement, silk cord wristlet
 with platinum attachments
 \$350.00

S. KIND & SONS, 1110 CHESTNUT ST. PHILADELPHIA

DUE TO UNUSUAL CONDITIONS PRICES ARE SUBJECT TO CHANGE

THE NEWEST DESIGNS IN SMALL WATCHES



7121 14K white gold case with 2 diamonds
Jeweled movement, silk cord wristlet
\$45.00; without diamonds, \$38.00
WALTHAM

7122 14K white or natural gold case, 17
Jeweled adjusted movement, ribbon wrist-
band, \$65.00; similar style
filled case, \$55.00
HAMILTON

7124 14K white or natural gold case, 17
Jeweled adjusted movement, silk cord
wristlet, \$50.00
ELGIN

7123 18K white or natural gold case, 17
Jeweled adjusted movement, silk cord
wristlet, \$78.00
HAMILTON

7126 14K white or natural gold case, 17
Jeweled movement, silk cord wristlet, \$55.00
MOVADO ESQUIRE

7125 14K white or natural gold filled case
17 Jeweled adjusted movement, silk cord
wristlet, \$55.00
HAMILTON

7128 14K white or natural gold case, 17
Jeweled movement, silk cord wristlet, \$105.00
MOVADO

7127 14K white or natural gold case, 17
Jeweled movement, silk cord wristlet, \$50.00
S. KIND & SONS

7130 14K white or natural gold
case, 15 Jeweled movement,
ribbon wristband, \$75.00
LONGINES

7129 14K white or natural gold case, 17
Jeweled movement, with 14K gold cord
wristlet to match, \$80.00
MOVADO

S. KIND & SONS, 1110 CHESTNUT ST. PHILADELPHIA

DUE TO UNUSUAL CONDITIONS PRICES ARE SUBJECT TO CHANGE

INEXPENSIVE WATCHES—GUARANTEED TIMEKEEPERS



7131
14K white or natural gold filled case
15 Jeweled movement, silk cord
wristlet. \$35.00
CONCORD

7132 14K white or natural gold case, 15
Jeweled movement, ribbon wristband. \$35.00;
same style 14K gold filled case with 7
Jeweled movement. \$20.00
ELGIN

7134 14K white gold case, 17 Jeweled
movement, silk cord wristlet. \$30.00
S. KIND & SONS

7133 14K white or natural gold filled case
7 Jeweled movement, silk cord wristlet
\$32.50; similar style with 17 Jeweled
movement. \$45.00
ELGIN

7136 14K white gold filled case with metal
wristlet to match, 15 Jeweled movement
\$32.50; with 7 Jeweled movement. \$25.00
S. KIND & SONS

7135 14K white or natural gold case 17
Jeweled movement, silk cord wristlet. \$40.00
similar style 14K gold filled case. \$32.50.
WITNAUER

7138 14K white gold filled case with metal
wristlet to match, 7 Jeweled movement
\$25.00; with 15 Jeweled movement. \$32.50
S. KIND & SONS

7137 14K white gold case, 17 Jeweled
movement, silk cord wristlet. \$25.00
S. KIND & SONS

7140 S. KIND & SONS
14K white gold case,
15 Jeweled movement,
ribbon wristband. \$25.00

7139 14K white or natural gold reinforced
case, 15 Jeweled movement, silk cord
wristlet or ribbon wristband. \$40.00
S. KIND & SONS

S. KIND & SONS, 1110 CHESTNUT ST. PHILADELPHIA

DUE TO UNUSUAL CONDITIONS PRICES ARE SUBJECT TO CHANGE

METAL WRISTLETS FOR MEN'S WATCHES

These wristlets may be attached to most any style watch and are adjustable to any wrist size.

7141 The washable linen strap, made of genuine Irish linen equipped with a non-rustable buckle—may be laundered as often as it becomes soiled. Sold in sets of 3, in colors of white, green and blue, \$1.50 per set.

7142 A sturdy and inexpensive wristlet—leather cord with white, green or yellow gold filled attachments, \$4.00

7143 Something different in a wristlet—white, green or yellow gold filled metal, \$3.00

7144 An open link wristlet of good taste—white, green or yellow gold filled with a collapsible, self-adjusting, ratched clasp, \$5.50

7145 Quite attractive in design—white, green or yellow gold filled over silver base, \$9.00; 14K white, green or yellow gold, \$40.00

7146 A KREMENTZ self-adjustable wristlet of non-tarnishable, non-corrosive metal, in white metal only, \$3.50; white, green or yellow gold over silver base, known as all-precious metal \$10.00

TWO ULTRA-FASHIONABLE WRISTLETS OF GOLD

7147 A flexible wristlet of unique design—14K white, green or yellow gold, \$64.00

7148 For those men who admire the unusual in jewelry we recommend this wristlet—14K white, green or yellow gold, \$62.00

S. KIND & SONS, 1110 CHESTNUT ST. PHILADELPHIA

DUE TO UNUSUAL CONDITIONS PRICES ARE SUBJECT TO CHANGE

WATCHES FOR THOSE WHO APPRECIATE DEPENDABILITY

S. KIND & SONS

7149 14K white or natural gold filled case, curved back, 17 jeweled movement, raised gilt numerals and hands, leather wristband, \$50.00

S. KIND & SONS

EXCLUSIVE MODELS

These watches represent all that is required in style to please the conservative as well as the fastidious taste, but of far more importance is the quality and dependability of the movement. Each watch must pass the most rigid test of our watch experts and is guaranteed to give excellent timekeeping service. We will gladly engrave the initials or monogram on back of case without extra charge.

S. KIND & SONS

7150 14K white gold filled case, curved back, 15 jeweled movement, radium dial, leather wristband \$27.50

S. KIND & SONS

7151 14K white or natural gold filled case, 15 jeweled movement, raised gilt numerals or radium dial, leather wristband, \$40.00

S. KIND & SONS

7152 14K white or natural gold filled case, curved to fit the wrist, 15 jeweled movement, raised gilt numerals or radium dial, leather wristband, \$50.00

S. KIND & SONS

7153 Thin model case, 10K natural, white or green gold filled, 15 jeweled movement, raised gilt numerals—an especially good value, \$27.50

S. KIND & SONS

7154 Extra thin model case 14K white or natural gold filled, 17 jeweled adjusted movement raised, gilt numerals, \$50.00; 15 jeweled adjusted movement, \$40.00

S. KIND & SONS

7155 Extra thin model case 14K white or natural gold special 17 jeweled movement, raised gold numerals and hands, \$80.00; special 15 jeweled movement \$70.00

S. KIND & SONS, 1110 CHESTNUT ST. PHILADELPHIA

DUE TO UNUSUAL CONDITIONS PRICES ARE SUBJECT TO CHANGE

WATCHES—BUILT FOR STYLE AND DURABILITY

Suitable metal wristlets to be worn with these watches are shown on page 24



7156—GRUEN—In modern 14K natural or white gold filled case with a metal wristlet to match, 15 jeweled adjusted movement, silver dial with raised gilt numerals, \$47.50

All our watches are fully guaranteed for time-keeping service for one year



7157 14K natural gold filled case, curved back to fit wrist 15 jeweled movement, radium dial, leather wristband, \$40.00; same style with 17 jeweled movement, \$45.00



7158 10K natural gold filled or silver case, 17 jeweled movement raised gold numerals, leather wristband, \$42.50; with radium numerals and hands, \$40.00



7159 14K natural gold case, curved back to fit wrist, 17 jeweled movement, raised gilt numerals leather wristband, \$95.00; same style 14K gold filled case, \$50.00



HAMILTON

7160 14K white or natural gold filled case, 17 jeweled adjusted movement, \$50.00; similar style 14K gold case, \$75.00



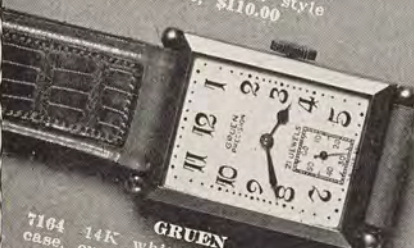
7161 14K white or green gold filled case, curved back to fit wrist, 15 jeweled movement raised gilt numerals or radium dial, leather wristband, \$62.00



7162 14K white or natural gold filled case, 19 jeweled adjusted movement, radium dial, leather wristband, \$65.00; similar style 14K gold case, \$110.00



7163 14K white or green gold case, 15 jeweled adjusted movement, radium dial, leather wristband, \$75.00



7164 14K white or natural gold case, curved back to fit wrist, 21 jeweled adjusted movement raised gilt numerals, leather wristband, \$100.00



LONGINES

7165 14K white or natural gold case, thin model, 17 jeweled adjusted movement, silver dial, \$90.00



7166 14K white or natural gold case, curved back to fit wrist, 17 jeweled movement, raised gold numerals, leather wristband, \$105.00

S. KIND & SONS, 1110 CHESTNUT ST. PHILADELPHIA

DUE TO UNUSUAL CONDITIONS PRICES ARE SUBJECT TO CHANGE

INEXPENSIVE WATCHES WHICH WILL GIVE SERVICE

Suitable metal wristlets to be worn with these watches are shown on page 24



Engraving of initials or monogram cheerfully done without extra charge

7167 All-proof watch, guaranteed water-proof shock-proof, non-magnetic and dust-proof, stainless steel case with non-breakable crystal. Appropriate for golf, football, swimming—it is unbreakable—with leather wristband, \$25.00 with metal wristlet, \$27.50



S. KIND & SONS
7168 10K white gold plated case, 15 jeweled adjusted movement, raised blue numerals, or radium dial, leather wristband, \$18.00

ELGIN
7169 10K white or natural gold plated case, 7 jeweled movement, leather wristband, \$17.00



GRUEN
7170 nickel case, chromium finish, 15 jeweled movement, raised gilt numerals, leather wristband, \$25.00

ELGIN
7172 14K white gold case, 17 jeweled movement, raised gilt numerals, leather wristband, \$35.00; same style 14K gold filled case, \$27.00



ELGIN
7171 10K natural gold filled case, 15 jeweled movement, raised gilt numerals, \$22.00; 7 jeweled movement, \$17.00



GRUEN
7173 10K natural gold filled case, 7 jeweled movement, raised gilt numerals, leather wristband, \$27.50

MOVADO
7174 14K white gold filled case, curved to fit wrist, 15 jeweled movement, raised blue numerals or radium dial, leather wristband, \$30.00



WITTSNAUER
7175 14K white or natural gold filled case, curved back, 15 jeweled movement, raised gilt numerals, or radium dial, leather wristband, \$40.00

WALTHAM
7176 14K white or natural gold filled case, 17 jeweled adjusted movement, raised gilt numerals, \$25.00

GRUEN
7177 14K white or natural gold filled case, curved back, 17 jeweled movement, radium dial, leather wristband, \$37.50; with 7 jeweled movement, \$27.50

S. KIND & SONS, 1110 CHESTNUT ST. PHILADELPHIA

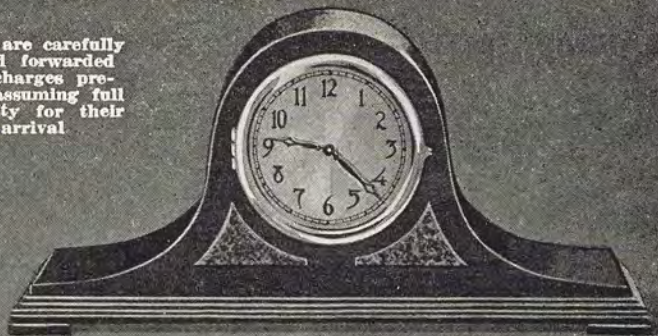
DUE TO UNUSUAL CONDITIONS PRICES ARE SUBJECT TO CHANGE

FOR THAT WEDDING OR ANNIVERSARY GIFT



ONYX CLOCK
7889 Green and black onyx case, 4" x 4" New Haven synchronous electric movement, silver dial 2 1/2" x 2 1/2", \$5.50

All clocks are carefully timed and forwarded delivery charges pre-paid, we assuming full responsibility for their safe arrival.



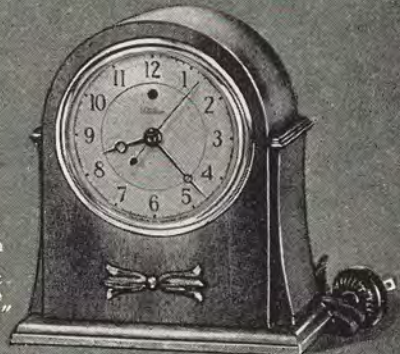
SETH THOMAS
7890 Mahogany case, contrasting panels, 9 3/4" high 20 1/4" wide, 5" silver dial, synchronous self-starting movement, quarter-hour Westminster chime and hour strike on five perfectly tuned rods, \$27.50



ELGIN
7891 Nickel chromium plated case, 4 1/2" square, 8 day movement silver dial with raised numerals, \$15.00



SETH THOMAS
7892 Mahogany case, 8 3/4" high 6 3/4" wide, 4" silver dial synchronous electric movement with hour and half hour strike \$20.00; similar style 6 1/2" high, 5 1/4" wide, without strike, \$11.50



TELECHRON
7894 Mahogany case 6 1/2" high, 6" wide 3 1/2" ivory dial, self-starting synchronous electric movement \$5.95



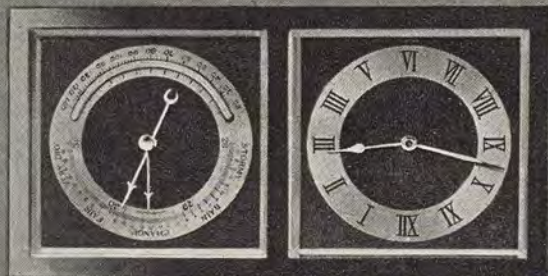
HAMMOND
7893 A novel clock—mahogany case, 6 1/4" high, 8" wide, synchronous electric movement, registering minute and hour, white dial with black numerals, \$9.75



TELECHRON
7895 Chromium finish case black Catalina base, 5 1/2" high 6 1/4" wide, with 4 1/2" silver dial, self-starting synchronous electric movement, \$5.95



COLONIAL LAMP
7896 Polished brass base with cut crystal drops frosted ornamental glass chimney 15 1/2" high \$19.00 pair



CHELSEA
7897 Combination clock and barometer, solid cast frame, Verd antique green, or copper bronze finish, 4 1/4" high, 8" wide, with synchronous electric time movement; or if preferred can be furnished with an 8 day key-wind movement, \$66.00



ARTISTIC LAMP
7898 Gracefully outlined, enameled in white, green or oxblood gold plated base and trimming, pleated silk shade, \$17.50 pair; sold singly at \$9.00 each

S. KIND & SONS, 1110 CHESTNUT ST. PHILADELPHIA

DUE TO UNUSUAL CONDITIONS PRICES ARE SUBJECT TO CHANGE

CHOOSE A LAMP OR CLOCK IT IS ALWAYS ACCEPTABLE



WALTHAM
7899 Leather folding clock, 8 day, 7 jeweled movement, radium numerals and hands, cases furnished in assorted colors of leather, \$13.50

We have often been told how beautifully we wrap our gifts. There is no extra charge for this service.



TELECHRON ALARM
7900 White or black Catalina case with brass base, 4 1/2" high, 4 1/2" wide, 3 1/2" dial, synchronous electric movement with alarm, \$5.95



SETH THOMAS
7904 Mahogany case, 28 3/4" high, 9 3/4" wide, 5" silver dial, synchronous electric movement with hour and half strike, \$30.00



SETH THOMAS
7902 Mahogany case, 5 3/4" high, 5 1/2" wide, 3 1/2" dial with synchronous electric movement, \$4.00



UNUSUAL CLOCK
7903 Chrome or gold finished case, 5" square with black background dial same finish as case, synchronous electric movement, \$5.95



SPECIAL CLOCK
7901 Dark brown bakelite case, 6" high, 4" wide, with inlays and faceplate of oxidized bronze neatly engraved, illuminated dial registering hour, minute and second synchronous electric movement, \$10.50



SETH THOMAS
7905 Mahogany case, raised contrasting panels, 7" high, 13 1/4" wide, 4" silver dial, synchronous electric movement striking hour and half hour, \$20.00



MODERN LAMP
7906 White Catalina lamp, black enameled base with gold plated trimmings, cut crystal drops and white silk pleated shade, 22" high, \$12.50



BEAUTIFUL LAMP
7908 White or blue china lamp, gilt trimmed, with gold plated octagon base and white silk pleated shade, 23" high, \$15.00



HERSCHEDE
7907 Mahogany case, bird's eye maple front, 9 3/4" high, 20" wide, 5 1/2" silver dial with raised bronze numerals, synchronous electric movement with continuous accurate time through current interruptions, quarter hour chime and hour strike, \$50.00

S. KIND & SONS, 1110 CHESTNUT ST. PHILADELPHIA

DUE TO UNUSUAL CONDITIONS PRICES ARE SUBJECT TO CHANGE

GIFTS THAT LITTLE CHILDREN WILL ENJOY AND CHERISH



7476 Child's birth record frame, etched design, size of opening 2 7/8" x 4 3/4" silver plated, \$5.00 sterling silver, \$10.00



7477 Baby spoon sterling silver curved handle, \$1.75



7478 Bib clasp etched design sterling silver, \$2.25



7486 Rattle sterling silver \$1.50



7487 Fork and spoon sterling silver, complete with china plate, \$2.75



7479 Baby military brushes sterling silver, engine-turned per pair, \$4.00; comb to match, \$1.00; set complete, \$5.00



7480 Baby set sterling silver consists of Knife, \$2.50; Fork, \$1.50 Spoon, \$1.50 set complete \$5.50



7488 Napkin ring, sterling silver 2 1/2" long \$1.00



7489 Rattle sterling silver, \$2.00



7490 Napkin ring, sterling silver, bead edge, \$1.25



7493 Baby brush and comb sterling silver, gray finish set complete, \$3.00



7481 Child's warming plate porcelain lined, nickel plated 6 3/4" in diameter, \$2.00



7492 Napkin ring, sterling silver, engine-turned, \$1.75



7484 Child's cup sterling silver etched with alphabet 2 1/2" high, \$6.00



7491 Pap bowl and plate sterling silver bowl 6" in diameter plate 6 3/4" in diameter set complete, \$10.00



7483 Pap bowl and plate, sterling silver 6 3/4" in diameter set complete, \$10.00



7482 Cup sterling silver gilt lined 2 1/2" high, \$4.50



7494 Cup sterling silver gilt lined 2 1/2" high, \$3.00



7495 Porringer sterling silver pierced handle 4 3/4" in diameter, \$5.00



7485

"KIND" BIRTH RECORD SPOON

A most attractive gift for the new born babe. It is a full size sterling silver teaspoon 5 3/4 inches long. The handle is gray finish and embossed front and back in the design of a stork, his long, thin legs resting on a chimney top, built up from the bowl of the spoon.

The bowl is embossed **"Birth Record,"** and a place is arranged for engraving all the facts such a record should contain: The full name and the place of birth. (There is a space for two names and one initial only; as Frank Smith, or Frank L. Smith, but not Frank Lawrence Smith). The hour (which is indicated by the engraved hands in the clock dial and the letters A.M. or P.M. below).

The date, month and year; the weight, in pounds and ounces; the height, in inches.

When this full record is engraved in a spoon it naturally is cherished by the mother and held in high esteem by all. The spoon is heavy and well made, and may be used daily for years; still its sentimental value will remain and it will naturally be retained for a lifetime as a cherished souvenir. **Price includes engraving.**

Sterling Silver, \$3.50

In ordering, please give full Birth Record to be engraved in bowl.

Name.....
(If there is a middle name use initial only, as for example JOHN L. DOE)

Place of birth, City..... State.....

HOUR..... A.M. or P.M. (Cross off one or the other)

Month..... Date..... Year.....

Weight:.....lbs.....oz. Height:.....inches
(Print birth record above)

S. KIND & SONS, 1110 CHESTNUT ST. PHILADELPHIA

DUE TO UNUSUAL CONDITIONS PRICES ARE SUBJECT TO CHANGE

A PAGE WHICH WILL HELP YOU SOLVE THE GIFT PROBLEM



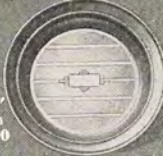
7496 Picture frame of crystal with individual monogram on the glass price includes engraving size of opening, 5" x 7" \$3.50; 6" x 8", \$3.50 8" x 10", \$4.00



7497 Table lighter dog mounted on Catalina base chromium plated 5 1/2" high, \$5.00



7499 Match box sterling silver engine-turned, 1 1/2" long, matches ash tray No. 7500, \$1.00



7500 Ash tray sterling silver engine-turned 2 1/2" in diameter matches ash tray No. 7499 \$1.25



7501 Money clip sterling silver enameled border \$1.25



7502 Picture frame, sterling silver, size of openings

		Plain	Engine-turned
2 1/4"	3 1/4"	\$3.00	\$3.75
2 1/4" x 3 1/4"	4 3/4"	3.75	5.00
3 1/2" x 4 1/2"	4"	4.00	6.00
4 1/2" x 6 3/4"	5"	7.50	9.00
4 3/4" x 6 3/4"	6 3/4"	8.50	10.00
5 3/8" x 7 3/8"	7 3/8"	12.00	14.00



7498 Stamp box sterling silver engine-turned, holds roll of 250 stamps \$4.00



7505 Picture frame, silver plated, black enamel, size of openings, 6" x 8", \$4.25 7" x 9", \$5.00 8" x 10", \$6.50



7504 Flower pin sterling silver 2 1/2" long, \$2.00



7503 Identification bracelet, sterling silver, \$1.00



7506 Ronson lighter chromium plated black enamel \$4.00



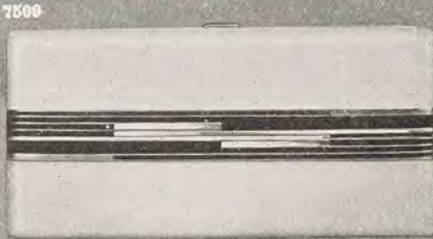
7507 Ladies' cigarette case sterling silver engine-turned holds 6 cigarettes 2 1/2" wide, \$5.00



7508 Prayer book marker sterling silver \$1.00



7509 Lighter chromium plated black enamel, \$4.00



7511 Ladies' cigarette case, chromium plated, white with black enameled stripes, holds 20 cigarettes, \$5.00



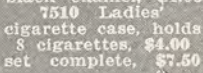
7512 Compact, silver plated, fitted with small bulb to illuminate the mirror, holds powder and rouge black enamel, 2 3/4" long, \$5.00



7513 Key holder sterling silver engine-turned 2 1/2" long, \$3.50



7514 Perfume flask, sterling silver engine-turned, \$1.25 funnel, \$1.50 set \$1.75



7510 Ladies' cigarette case, holds 8 cigarettes, \$4.00 set complete, \$7.50



7515 Identification bracelet sterling silver \$1.50



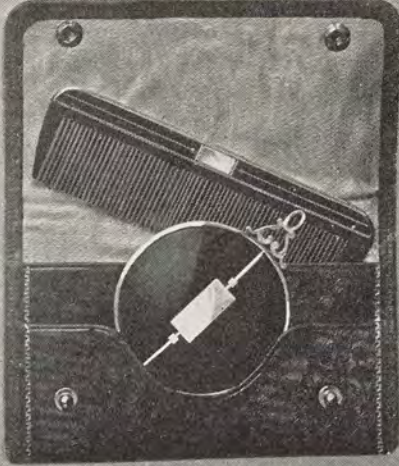
7516 Oxfords sterling silver engraved edge, \$5.00



7517 Comb in case sterling silver, engine-turned, 3" long, \$3.75



7518 Bobbed hair comb in leather case, sterling silver, 3 1/2" long, \$2.50



7519 Bobbed hair set, sterling silver black enameled mirror 2 1/4" in diameter in leather case, \$5.00



7520 Compact sterling silver enameled, holds powder and rouge, in colors of white, blue and yellow 2 1/2" in diameter \$4.00



7521 Compact sterling silver lid, holds powder and rouge, in colors of white blue and yellow 2 1/4" wide, \$6.00

S. KIND & SONS, 1110 CHESTNUT ST. PHILADELPHIA

DUE TO UNUSUAL CONDITIONS PRICES ARE SUBJECT TO CHANGE

TIMELY AND DESIRABLE GIFTS MODERATELY PRICED



7522 Cigarette case sterling silver engine-turned holds 12 cigarettes 4 1/2" long, \$9.50



7523 Book ends onyx base, bronze dog, 8 3/4" high \$8.50 pair



7524 Cigarette case sterling silver, engine-turned, holds 12 cigarettes, 4 3/4" long \$12.00



7525 File and comb in leather case, sterling silver, engine-turned, 5" long \$2.25



7525 Cigarette case sterling silver, engine-turned, holds 12 cigarettes, 4" long \$13.50



7526 Hair brush with comb in handle sterling silver, 5 1/2" long, silver plated \$5.00



7527 Cigarette box chromium plated lid and dog; Catalina box with 4 sections 8" long, \$8.00



7529 Cigarette case and lighter set, chromium plated, black and smoked pearl enamel holds 12 cigarettes, set complete, \$13.50



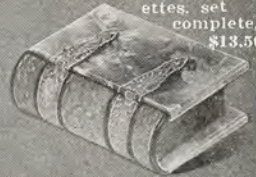
7531 Brush with comb in handle chromium plated in leather case \$4.50



7532 Cigarette case and lighter combination, chromium plated black and smoked pearl enamel, holds 14 cigarettes, \$7.50



7533 Traveling set, chromium plated, black enamel, consists of military brushes, cloth brush and comb, complete \$14.50



7534 Cigarette box onyx lid and base with bronze fittings 6" x 4", \$12.00



7535 Cigarette case chromium plated black enamel, holds 20 cigarettes, 6 1/2" long, \$6.00



7536 Hair brush, short handle, sterling silver comb to match, in leather case, \$7.50



7537 Military brushes with comb to match chromium plated black enamel in leather case, \$7.50



7538 Military brushes sterling silver, comb to match, engine-turned in leather case, \$13.50



7539 Beer mug silver plated lid ornamented, 8 1/2" high, per dozen \$30.00



7540 Decanter sterling silver deposit, non-tarnishable black or blue glass, \$5.00



7541 Flask, sterling silver engine-turned, 1 pint capacity, \$22.00



7542 Decanter sterling silver deposit, non-tarnishable, 8 1/2" high \$6.00



7543 Beverage dispenser, silver plated fits on top of bottle, will pour exactly 1 1/2 ounces and refills automatically as bottle is tilted back, \$3.99; quart bottle, sterling silver deposit, \$7.50 complete, \$10.50

S. KIND & SONS, 1110 CHESTNUT ST. PHILADELPHIA

DUE TO UNUSUAL CONDITIONS PRICES ARE SUBJECT TO CHANGE

NOVEL GIFTS THAT WILL DELIGHT THE RECIPIENT



7544 Ronson lighter chromium plated engine-turned \$5.00



7545 Pocket knife, sterling silver, contains cork screw and bottle opener, 2 1/2" long, \$3.00



7549 Bag tag sterling silver \$1.00



7546 Bottle opener and cork screw, sterling silver handle, 4 1/2" long, \$1.50



7547 Identification bracelet, sterling silver \$1.50



7548 Key chain sterling silver \$1.00



7550 Cigar cutter sterling silver engine-turned \$2.50



7552 Rabbit's foot charm sterling silver top, \$1.00



7553 Money clip sterling silver embossed, 2 1/4" long, \$1.75



7551 Thermometer case sterling silver, engine-turned 4 1/2" long (price does not include thermometer), \$3.50



7555 Ash tray of onyx with bronze ducks 6" long, \$5.00

7554 Lighter and ash tray, set of 4, chromium plated, colored base of Catalina, \$5.00



7557 Key chain, sterling silver attaches to belt, \$2.25



7558 Book ends, silver plated figure of seal 5 1/2" high, per pair, \$7.50



7559 Key holder sterling silver engine-turned 2 keys, \$4.00 with 1 key, \$3.50



7560 Highball glass price includes engraving of monogram on glass, 5 1/2" high, \$10.00 cocktail glasses, sherbets and goblets to match, same price



7556 Ash tray of onyx with bronze dog, 4 1/4" wide \$2.50

7561 Cigarette box with applied sterling silver deposit monogram black glass 3 1/2" x 4 1/2", \$3.50 ash tray to match 5 1/2" in diameter, \$2.50



7562 Sterling Silver Mounted Monogrammed Gear Shift Ball
The newest expression of personal taste for motorists. Adjustable to gearshift rod and an ideal gift that is individual and inexpensive. Furnished in colors of black, ivory, blue, jade, rattan or maroon. In ordering please be sure to mention year and make of car. Price includes engraving of monogram, \$3.00



7566 Beverage mixer, sterling silver deposit, silver plated top, quart capacity, \$4.00



7563 Cigarette box and lighter, chromium plated colored base of Catalina, 5 1/2" high \$6.00



7564 Bitters bottle sterling silver deposit 7 1/2" high, \$2.50



7565 Lighter and pipe holder chromium plated, colored base of Catalina, \$8.00

S. KIND & SONS, 1110 CHESTNUT ST. PHILADELPHIA

DUE TO UNUSUAL CONDITIONS PRICES ARE SUBJECT TO CHANGE

BEAUTIFUL DESIGNS IN STERLING SILVER TOILETWARE



Initials or monogram always add to the appearance of toiletware. We cheerfully do this engraving in a most careful manner without extra charge.

	Reflection Gray Finish	Fashion Gray Finish	De Lorraine Gray Finish	Moderne Bright Finish	Josephine Bright Finish
Mirror	\$21.00	\$25.00	\$32.00	\$31.00	\$17.50
Hair Brush	15.00	20.00	18.50	22.00	12.50
Lady's Comb	4.00	5.00	5.00	7.00	3.00
Man's Comb	4.00	5.00	5.00	7.00	3.00
Cloth Brush	15.00	24.00	21.00	17.50	11.00
Hat Brush	not made	not made	13.00	not made	3.50
Military Brushes, pair	25.00	40.00	39.00	not made	19.50
Nail File	2.50	3.25	6.00	7.00	2.25
Shoe Hook	2.50	3.25	6.00	6.00	2.25
Shoe Horn	2.50	3.25	6.00	15.00	2.25
Cuticle Knife	2.50	3.25	6.00	6.00	2.25
Manicure Scissors	5.00	5.00	6.50	10.75	2.25
Nail Polisher	7.50	11.50	13.50	not made	3.50
Nail Polisher Tray	8.50	20.00	15.50	not made	2.50
Pin Tray	not made	not made	13.50	not made	not made
Puff Jar	20.00	25.00	29.00	26.00	10.50
Salve Jar	7.50	12.50	15.00	13.50	2.00
Cologne Bottle	15.00	17.50	17.00	17.50	3.50

S. KIND & SONS, 1110 CHESTNUT ST. PHILADELPHIA

DUE TO UNUSUAL CONDITIONS PRICES ARE SUBJECT TO CHANGE

STERLING SILVER TOILETWARE OF DISTINCTION



Each piece is carefully wrapped in a most beautiful manner, Delivery charges are prepaid, and safe arrival of package is guaranteed by us.

	Southampton Bright Finish	Antoinette Bright Finish	Portia Bright Finish	Duchess Bright Finish	Mayfair Bright Finish
Mirror	\$17.50	\$21.00	\$13.50	\$16.00	\$19.00
Hair Brush	13.50	14.00	9.00	10.00	13.50
Lady's Comb	4.00	5.00	2.50	3.25	5.00
Man's Comb	4.00	5.00	2.50	3.25	5.00
Cloth Brush	not made	16.50	7.50	8.50	14.00
Hat Brush	not made	11.00	not made	3.50	10.50
Military Brush, per pair..	25.00	25.00	15.00	14.00	34.00
Nail File	3.50	4.25	1.75	1.50	7.50
Shoe Hook	3.50	4.25	1.75	1.50	6.50
Shoe Horn	3.50	4.25	1.75	1.50	11.00
Cuticle Knife	3.50	4.25	1.75	1.50	6.50
Manicure Scissors	6.50	6.00	2.25	2.25	10.50
Nail Polisher	3.50	8.50	3.25	2.75	12.50
Nail Polisher Tray	13.50	13.50	2.50	3.75	13.00
Pin Tray	not made	14.00	not made	not made	12.50
Puff Jar	14.50	15.00	10.00	10.00	20.00
Salve Jar	5.00	5.00	1.75	2.75	10.00
Cologne Bottle	15.00	15.00	3.25	3.00	21.00

S. KIND & SONS, 1110 CHESTNUT ST. PHILADELPHIA

DUE TO UNUSUAL CONDITIONS PRICES ARE SUBJECT TO CHANGE

ATTRACTIVE TOILETWARE PRICED MODERATELY



We have assembled patterns of toiletware on this page in designs which we believe will appeal to both men and women who prefer the "unusual" things.

For instance, the Argyle pattern of sterling silver is particularly appropriate for a man. It has a ring mirror, a stub handled hair brush, or military brushes, and the pieces are substantially made of a weight which is guaranteed to give excellent service.

The other mirrors illustrated naturally appeal to women, and they are most beautiful in their contrast of the different colors of lacquer. These sets are made of non-tarnishable metal and the different patterns are furnished in different colors as follows: Selene, black shaded lacquer; Grandeur, green shaded lacquer; Adeline, ivory lacquer top with black lacquer handle; and the Valere, of black lacquer. This particular mirror is furnished with an adjustable easel so that it can be used as a make-up mirror.

Where space permits, we are always glad to engrave the initials or monogram without charge.

	Valere Lacquer	Selene Lacquer	Argyle Sterling silver Bright finish	Grandeur Lacquer	Adeline Lacquer
Mirror	\$10.00	\$7.00	\$32.00	\$6.00	\$6.50
Hair Brush	6.50	8.00	20.00	6.50	6.50
Comb	2.50	3.00	6.50	3.50	2.50
Cloth Brush	4.25	not made	15.00	3.50	4.25
Military Brushes per pair	not made	not made	30.00	not made	not made
Nail File	1.75	not made	7.00	1.00	1.75
Shoe Hook	1.75	not made	6.50	1.00	1.75
Shoe Horn	1.75	not made	8.50	1.00	1.75
Scissors	not made	not made	11.00	not made	not made
Puff Jar	4.25	not made	not made	4.00	4.25

S. KIND & SONS, 1110 CHESTNUT ST. PHILADELPHIA

DUE TO UNUSUAL CONDITIONS PRICES ARE SUBJECT TO CHANGE

USEFUL GIFTS EXTREMELY MODERATE IN PRICE



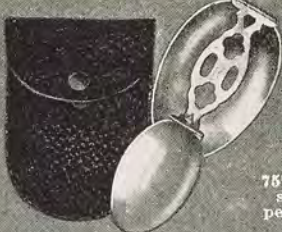
7572 Tomato server sterling silver, gray finish, \$6.50



7567 Sugar tongs sterling silver, \$4.25



7568 Corn Holders sterling silver handles, per doz. \$3.50; per pair, \$7.5



7569 Medicine spoon sterling silver, in leather case, \$7.50



7570 Salt spoon sterling silver per doz., \$4.50; each, \$50



7571 Sugar tongs sterling silver, gray finish, \$2.50



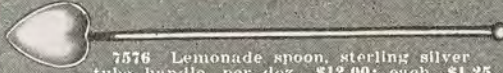
7573 Steak carving set, sterling silver handles and guards, stainless steel blade and fork. Special value, \$5.00



7574 Salt spoon shaker, sterling silver, \$1.25



7575 Lemon fork sterling silver gray finish \$1.00



7576 Lemonade spoon, sterling silver tube handle, per doz., \$12.00; each, \$1.25



7578 Cube ice tongs sterling silver \$5.00



7577 Poultry shears, sterling silver handles, \$7.50



7580 Cheese server, sterling silver handle stainless steel blade, \$1.75



7581 Grape shears, sterling silver handle \$3.75



7579 Pie server sterling silver handle, stainless steel blade, \$2.50



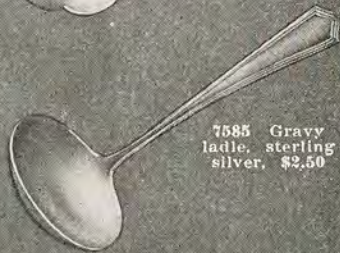
7582 Bon bon spoon, sterling silver, gray finish, \$1.25



7583 Ice tongs sterling silver \$10.00



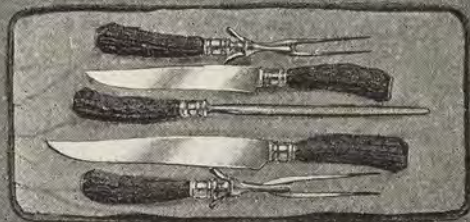
7584 Pamilla chest, lined with non-tarnishable cloth to prevent silver from tarnishing, leather covered zipper style fastener made to hold 200 pieces of flatware, 12 3/4" x 21 1/2" x 3 1/4", \$10.00



7585 Gravy ladle, sterling silver, \$2.50



7586 4 piece natural stag handle carving set with knife, fork, steel and poultry shears stainless steel blades, sterling silver mountings and ends, \$14.50; without poultry shears, 3 pieces, \$8.00



7587 5 piece stag handle carving set, stainless steel blades, sterling silver mountings and ends, \$19.00; 3 piece set, \$11.00

S. KIND & SONS, 1110 CHESTNUT ST. PHILADELPHIA

DUE TO UNUSUAL CONDITIONS PRICES ARE SUBJECT TO CHANGE

STERLING SILVER TABLEWARE OF VALUE



	Washington Sterling		Fairfax Sterling		Wm. & Mary Sterling		Craftsman Sterling		Pointed Antique Sterling		Queen Anne Sterling	
	Doz.	Each	Doz.	Each	Doz.	Each	Doz.	Each	Doz.	Each	Doz.	Each
Tea Spoons	12.00	1.25	16.00	1.75	16.00	1.75	17.00	1.75	20.00	2.00	20.00	2.00
Tea Spoons	17.00	1.75	20.00	2.00	20.00	2.00	21.00	2.00	25.00	2.50	not made	
Dessert Spoons	27.00	2.50	35.00	3.25	34.00	3.25	35.00	3.25	32.00	3.00	32.00	3.00
Dessert Spoons	29.00	2.75	41.00	4.00	not made		not made		40.00	3.75	35.00	3.25
Table Spoons	42.00	3.50	45.00	3.75	48.00	4.00	54.00	4.50	48.00	4.00	48.00	4.00
Soup Spoons, round bowls	32.00	3.00	36.00	3.25	36.00	3.25	40.00	3.75	40.00	3.75	36.00	3.25
Dessert Forks	26.00	2.50	32.00	3.00	32.00	3.00	36.00	3.25	32.00	3.00	32.00	3.00
Dessert Forks	29.00	2.75	42.00	3.75	not made		not made		40.00	3.75	35.00	3.25
Dinner Forks	34.00	3.25	43.00	4.00	43.00	4.00	46.00	4.25	42.00	3.75	42.00	3.75
Dinner Forks	38.00	3.50	50.00	4.50	not made		not made		53.00	4.75	46.00	4.25
Dessert Knives, stainless steel	30.00	2.75	36.00	3.25	36.00	3.25	38.00	3.50	36.00	3.25	36.00	3.25
Dinner Knives, stainless steel	34.00	3.25	40.00	3.75	40.00	3.75	42.00	3.75	40.00	3.75	40.00	3.75
Cream Soup Spoons	22.00	2.25	25.00	2.50	28.00	2.75	31.00	2.75	30.00	2.75	28.00	2.75
Bouillon Spoons	17.00	1.75	23.00	2.25	23.00	2.25	23.00	2.25	24.00	2.25	24.00	2.25
Coffee Spoons	10.00	1.25	12.00	1.25	12.00	1.25	12.00	1.25	12.00	1.25	12.00	1.25
Orange Spoons	19.00	2.00	28.00	2.75	24.00	2.25	27.00	2.50	28.00	2.75	27.00	2.50
Ice Tea Spoons	23.00	2.25	28.00	2.75	28.00	2.75	30.00	2.75	30.00	2.75	28.00	2.75
Ice Cream Forks	19.00	2.00	30.00	2.75	25.00	2.50	27.00	2.50	30.00	2.75	28.00	2.75
Oyster Forks	13.00	1.50	17.50	1.75	17.00	1.75	20.00	2.00	18.00	1.75	17.50	1.75
Individual Salad Forks	19.00	2.00	26.00	2.50	26.00	2.50	30.00	2.75	27.00	2.50	26.00	2.50
Butter Spreaders	17.00	1.75	25.00	2.50	24.00	2.25	26.00	2.50	25.00	2.50	25.00	2.50
Berry Spoon		6.50		8.50		8.50		8.50		9.00		8.50
Bon Bon Spoon		2.00		2.25		2.50		2.75		2.25		2.25
Olive Spoon		2.00		2.75		2.50		2.50		not made		not made
Preserve Spoon		5.00		5.50		6.00		5.00		6.00		6.00
Sugar Spoon		2.00		2.50		2.50		2.75		2.50		2.50
Cold Meat Fork		5.00		6.00		5.00		5.00		6.50		6.00
Olive Fork		2.00		2.75		1.75		2.50		2.75		2.75
Cheese Server, hollow handle		2.75		3.00		3.00		3.00		3.00		3.00
Pie Server, hollow handle		4.50		5.00		4.75		5.90		5.00		5.00
Jelly Server		2.00		2.50		2.25		3.00		2.75		2.75
Tomato Server		7.50		8.50		8.50		6.50		5.00		8.00
Cream Ladle		3.00		3.25		2.75		3.25		3.25		3.25
Mayonnaise Ladle		2.50		2.75		2.00		not made		2.75		not made
Gravy Ladle		4.50		5.50		5.00		5.00		5.00		5.00
Sugar Tongs		2.00		2.75		1.75		3.25		3.00		3.50
Butter Knife		3.00		4.00		4.00		3.75		4.00		4.00
Butter Pick		2.00		2.50		2.00		2.75		2.50		2.50
Baby Set, Spoon and Fork		3.00		3.50		3.50		not made		3.00		3.00
Salad Set, 2 pieces		14.00		12.00		11.00		17.00		12.50		14.25
Carving Set, large, 3 pcs., stainless steel		25.00		28.00		28.00		28.00		28.00		28.00
Carving Set, steak, 2 pcs., stainless steel		8.00		9.00		9.00		9.00		8.00		9.00

S. KIND & SONS, 1110 CHESTNUT ST. PHILADELPHIA

DUE TO UNUSUAL CONDITIONS PRICES ARE SUBJECT TO CHANGE

STERLING SILVER TABLEWARE OF VALUE



	Baltimore Rose Sterling		Rose Marie Sterling		Lady Diana Sterling		Gadroon Sterling		Cascade Sterling		Hunt Club Sterling	
	Doz.	Each	Doz.	Each	Doz.	Each	Doz.	Each	Doz.	Each	Doz.	Each
Tea Spoons	\$9.00	\$1.00	\$14.00	\$1.50	\$15.00	\$1.50	\$16.00	\$1.75	\$14.00	\$1.50	\$16.00	\$1.75
Tea Spoons	10.00	1.25	16.00	1.75	17.00	1.75	20.00	2.00	16.00	1.75	20.00	2.00
Tea Spoons	14.00	1.50	20.00	2.00	21.00	2.00	not made		20.00	2.00	25.00	2.50
Dessert Spoons	24.00	2.25	33.00	3.00	30.00	2.75	36.00	3.25	29.00	2.75	33.00	3.00
Dessert Spoons	not made		not made		36.00	3.25	not made		not made		not made	
Table Spoons	32.00	2.75	54.00	4.50	45.00	3.75	54.00	4.50	51.00	4.25	54.00	4.50
Soup, Spoons, round bowls	24.00	2.25	38.00	3.50	37.00	3.50	38.00	3.50	36.00	3.25	38.00	3.50
Dessert Forks	24.00	2.25	35.00	3.25	33.00	3.00	36.00	3.25	32.00	3.00	35.00	3.25
Dessert Forks	not made		not made		39.00	3.50	not made		not made		45.00	4.00
Dinner Forks	32.00	3.00	48.00	4.25	42.00	3.75	44.00	4.00	42.00	3.75	48.00	4.25
Dinner Forks	not made		not made		48.00	4.25	not made		not made		54.00	4.75
Dessert Knives, stainless steel	21.00	2.00	38.00	3.50	38.00	3.50	38.00	3.50	36.00	3.25	38.00	3.50
Dinner Knives, stainless steel	30.00	2.75	42.00	3.75	42.00	3.75	42.00	3.75	40.00	3.75	42.00	3.75
Cream Soup Spoons	15.00	1.50	31.00	3.00	30.00	2.75	30.00	2.75	29.00	2.75	33.00	3.00
Bouillon Spoons	14.00	1.50	25.00	2.50	22.00	2.25	24.00	2.25	22.00	2.25	26.00	2.50
Coffee Spoons	8.00	1.00	13.00	1.50	11.00	1.25	12.00	1.25	12.00	1.25	14.00	1.50
Orange Spoons	15.00	1.50	30.00	2.75	26.00	2.50	30.00	2.75	26.00	2.50	30.00	2.75
Ice Tea Spoons	18.00	1.75	33.00	3.00	29.00	2.75	32.00	3.00	28.00	2.75	33.00	3.00
Ice Cream Forks	15.00	1.50	30.00	2.75	26.00	2.50	28.00	2.75	26.00	2.50	30.00	2.75
Oyster Forks	11.00	1.25	17.50	1.75	18.00	1.75	18.00	1.75	18.00	1.75	17.50	1.75
Individual Salad Forks	15.00	1.50	30.00	2.75	29.00	2.75	28.00	2.75	28.00	2.75	30.00	2.75
Butter Spreaders	12.00	1.25	25.00	2.50	25.00	2.50	24.00	2.25	24.00	2.25	25.00	2.50
Berry Spoon	5.00	5.00	9.00	9.00	8.50	8.50	8.50	8.50	8.00	8.00	8.50	8.50
Bon Bon Spoon	1.25	1.25	2.50	2.50	2.50	2.50	2.50	2.50	2.50	2.50	2.25	2.25
Olive Spoon	3.00	1.25	not made		5.00	2.50	not made		5.00	2.50	5.00	2.75
Preserve Spoon	1.25	1.25	3.75	3.75	5.00	5.00	not made		5.00	5.00	5.50	5.50
Sugar Spoon	3.00	1.25	6.50	6.50	6.00	6.00	6.00	6.00	5.00	5.00	6.00	6.00
Cold Meat Fork	1.25	1.25	2.75	2.75	2.50	2.50	2.50	2.50	2.50	2.50	2.50	2.50
Olive Fork	2.25	2.25	3.00	3.00	3.00	3.00	3.00	3.00	3.00	3.00	3.00	3.00
Cheese Server, hollow handle	3.25	3.25	5.00	5.00	5.00	5.00	5.00	5.00	5.00	5.00	5.00	5.00
Pie Server, hollow handle	2.00	2.00	2.75	2.75	3.00	3.00	2.50	2.50	2.75	2.75	2.50	2.50
Jelly Server	7.00	7.00	8.50	8.50	6.50	6.50	7.50	7.50	6.50	6.50	8.50	8.50
Tomato Server	2.25	2.25	4.00	4.00	3.25	3.25	3.50	3.50	3.25	3.25	3.75	3.75
Cream Ladle	1.50	1.50	3.00	3.00	not made		not made		not made		2.75	2.75
Mayonnaisse Ladle	3.25	3.25	6.00	6.00	5.00	5.00	6.00	6.00	5.00	5.00	6.00	6.00
Gravy Ladle	2.25	2.25	3.25	3.25	3.00	3.00	3.50	3.50	3.00	3.00	3.25	3.25
Sugar Tongs	2.00	2.00	4.00	4.00	3.75	3.75	3.50	3.50	3.75	3.75	4.00	4.00
Butter Knife	1.25	1.25	2.75	2.75	2.75	2.75	not made		2.50	2.50	2.50	2.50
Butter Pick	2.00	2.00	not made		3.50	3.50	not made		3.25	3.25	3.50	3.50
Baby Set, Spoon and Fork	9.00	9.00	16.50	16.50	17.00	17.00	12.50	12.50	16.00	16.00	15.00	15.00
Salad Set, 2 pieces	20.00	20.00	28.00	28.00	28.00	28.00	30.00	30.00	28.00	28.00	28.00	28.00
Carving Set, large, 3 pcs., stainless steel	4.00	4.00	9.00	9.00	9.00	9.00	9.00	9.00	9.00	9.00	9.00	9.00
Carving Set, steak, 2 pcs., stainless steel												

S. KIND & SONS, 1110 CHESTNUT ST. PHILADELPHIA

DUE TO UNUSUAL CONDITIONS PRICES ARE SUBJECT TO CHANGE

SILVER PLATED TABLEWARE OF QUALITY



	Legacy 1847 Rogers Plate	George Washington Alvin Plate	Mayfair Wm. Rogers Plate	King Cedric Community Plate	Lady Hamilton Community Plate	Washington Irving Gorham Plate
	Doz.	Doz.	Doz.	Doz.	Doz.	Doz.
Tea Spoons	\$6.50	\$6.00	\$4.00	\$5.50	\$5.50	\$7.50
Dessert Spoons	13.00	12.00	8.00	13.00	13.00	15.00
Soup Spoons	13.00	13.00	8.00	13.00	13.00	15.00
Table Spoons	13.00	12.00	8.00	13.00	13.00	15.00
Dessert Forks	13.00	12.00	8.00	13.00	13.00	15.00
Dinner Forks	13.00	12.00	8.00	13.00	13.00	15.00
Viande Dinner Forks	13.00	not made	not made	not made	not made	not made
Dessert Knives, hollow handles, stainless steel	24.00	22.00	21.00	22.00	22.00	25.00
Dinner Knives, hollow handles, stainless steel	24.00	22.00	21.00	22.00	22.00	25.00
Dinner Knives, solid handles, stainless steel	not made	not made	10.00	not made	not made	not made
Viande Dinner Knives, hollow handles, stainless steel	not made	not made	not made	not made	not made	not made
Bouillon Spoons	12.00	12.00	6.00	12.00	12.00	13.50
Cream Soup Spoons	13.00	not made	not made	13.00	13.00	not made
Coffee Spoons	6.50	6.00	4.00	5.50	5.50	7.00
Orange Spoons	10.00	10.00	6.00	10.00	10.00	12.00
Iced Tea Spoons	10.00	10.00	6.00	9.50	9.50	12.00
Ica Cream Forks	12.00	not made	not made	11.00	11.00	12.00
Oyster Forks	10.00	9.00	6.00	9.50	9.50	10.00
Salad Forks	12.00	12.00	8.00	11.00	11.00	14.00
Butter Spreaders	10.00	12.00	6.00	9.50	9.50	12.00
Berry Spoon	Each	Each	Each	Each	Each	Each
Sugar Spoon	3.00	3.00	1.75	1.85	1.85	3.50
Olive Spoon	1.00	1.00	.75	1.00	1.00	1.25
Cold Meat Fork	not made	1.50	not made	not made	not made	1.25
Olive or Pickle Fork	2.00	2.00	1.25	1.85	1.85	2.25
Cheese Server, hollow handle	not made	1.25	not made	not made	not made	1.25
Pie Server, hollow handle	2.75	2.50	not made	not made	not made	2.25
Tomato Server	3.50	3.75	2.50	3.00	3.00	4.00
Jelly Server	3.00	3.00	1.75	1.85	1.85	3.50
French pastry server	1.50	not made	not made	1.50	1.50	1.50
Cream Ladle	not made	not made	not made	2.75	2.75	not made
Gravy Ladle	2.00	2.00	1.25	not made	not made	2.25
Sugar Tongs	2.50	2.50	1.75	1.85	1.85	2.75
Butter Knife	1.50	1.75	1.00	1.50	1.50	2.00
Child's Set, spoon, fork and knife, 3 pcs.	1.00	1.00	.75	1.00	1.00	1.25
Baby Set	3.25	3.00	2.00	3.75	3.75	3.65
Curved Handle Feeding Spoon	2.00	not made	not made	1.50	1.50	3.50
Salad Set, spoon and fork, 2 pcs.	1.00	not made	not made	.85	.85	not made
Carving Set, large, stainless steel, 3 pcs.	6.50	not made	not made	3.70	3.70	6.50
Carving Set, steak, stainless steel, 2 pcs.	17.00	16.50	not made	17.00	17.00	18.00
Poultry Shears	7.50	6.00	5.00	6.00	6.00	6.00
Ice Tongs	10.00	not made	not made	not made	10.00	10.00
	not made	4.00	not made	not made	not made	4.00

S. KIND & SONS, 1110 CHESTNUT ST. PHILADELPHIA

DUE TO UNUSUAL CONDITIONS PRICES ARE SUBJECT TO CHANGE

SILVER PLATED TABLEWARE OF QUALITY



	Deauville Community Plate	Marquise 1847 Rodgers Plate	Grosvenor Community Plate	Masterpiece Holmes & Ed- wards Plate	Vanity Fair Gorham Plate	The Stylist Reed & Bar- ton Plate
Tea Spoons	Doz. \$5.50	Doz. \$6.50	Doz. \$5.50	Doz. \$6.50	Doz. \$7.50	Doz. \$6.50
Dessert Spoons	13.00	13.00	13.00	13.00	15.00	12.00
Soup Spoons	13.00	13.00	13.00	13.00	15.00	14.00
Table Spoons	13.00	13.00	13.00	13.00	15.00	14.00
Dessert Forks	13.00	13.00	13.00	13.00	15.00	14.00
Dinner Forks	not made	13.00	not made	13.00	not made	not made
Viande Dessert Forks	not made	13.00	not made	13.00	not made	not made
Dinner Dinner Forks	not made	13.00	not made	13.00	not made	not made
Dessert Knives, hollow handle, stainless steel	22.00	24.00	22.00	26.00	23.00	20.00
Dinner Knives, hollow handle, stainless steel	22.00	24.00	22.00	26.00	25.00	22.00
Viande Dinner Knives, hollow handle, stainless steel	not made	26.00	not made	26.00	not made	not made
Viande Dessert Knives, hollow handle, stainless steel	not made	26.00	not made	26.00	not made	not made
Bouillon Spoons	12.00	12.00	12.00	12.00	13.50	12.00
Cream Soup Spoons	13.00	13.00	13.00	13.00	not made	13.00
Coffee Spoons	5.50	6.50	5.50	6.50	7.00	6.00
Orange Spoons	10.00	10.00	10.00	10.00	12.00	10.00
Iced Tea Spoons	9.50	10.00	9.50	10.00	12.00	12.00
Ice Cream Forks	11.00	12.00	11.00	12.00	12.00	12.00
Oyster Forks	9.50	10.00	9.50	10.00	10.00	9.00
Salad Forks	11.00	12.00	11.00	12.00	14.00	12.00
Butter Spreaders	9.50	10.00	9.50	10.00	12.00	10.00
Berry Spoon	Each 1.85	Each 3.00	Each 1.85	Each 3.00	Each 3.50	Each 3.00
Sugar Spoon	1.00	1.00	1.00	1.00	1.25	1.00
Olive Spoon	not made	not made	not made	1.50	1.25	not made
Cold Meat Fork	1.85	2.00	1.85	2.00	2.25	2.50
Olive or Pickle Fork	1.00	1.25	1.00	1.25	1.25	1.25
Cheese Server, hollow handle	not made	2.75	not made	2.75	2.25	2.00
Pie Server, hollow handle	3.00	3.50	3.00	3.50	4.00	3.00
Tomato Server	1.85	3.00	1.85	3.00	3.50	3.00
Jelly Server	1.50	1.50	1.50	1.50	1.50	1.50
French Pastry Server	2.75	not made	2.75	not made	not made	not made
Cream Ladle	1.50	2.00	1.50	2.00	2.25	2.00
Gravy Ladle	1.85	2.50	1.85	2.50	2.75	2.50
Sugar Tong	1.50	1.50	1.50	1.50	2.00	1.75
Butter Knife	1.00	1.00	1.00	1.00	1.25	1.00
Child's Set, spoon, fork and knife, 3 pcs.	3.75	3.25	3.75	3.25	3.65	not made
Baby Set	1.50	2.00	1.50	not made	3.50	not made
Curved Handle Feeding Spoon	.85	1.00	.85	not made	not made	not made
Salad Set, spoon and fork, 2 pcs.	3.75	6.50	3.60	4.50	6.50	6.50
Carving Set, large, stainless steel, 3 pcs.	17.00	17.00	17.00	17.00	18.00	15.00
Carving Set, steak, stainless steel, 2 pcs.	6.00	7.50	6.00	7.50	6.00	5.00
Poultry Shears	10.00	10.00	10.00	10.00	10.00	not made
Ice Tong	not made	not made	not made	not made	4.00	4.00

S. KIND & SONS, 1110 CHESTNUT ST. PHILADELPHIA

DUE TO UNUSUAL CONDITIONS PRICES ARE SUBJECT TO CHANGE

A COLLECTION OF BEAUTIFUL GIFTS FOR THE HOME



7588 Bread tray, pierced border, bright finish, sterling silver, 13" long, \$12.00



7589 Salt and pepper shaker, heavy weight sterling silver, 3 3/4" high, per pair, \$10.00



7590 Centrepiece, sterling silver, pierced border double screen for cut flowers, 10 1/2" in diameter \$26.00



7591 Almond dish sterling silver, bright finish, 6 1/2" long, \$5.00 individual dishes to match, per dozen \$15.00



7592 Coaster for bottles sterling silver rim glass base 3 3/4" in diameter per dozen, \$10.00



7593 Napkin ring, sterling silver thread 3" long, \$1.50



7595 Mayonnaise set, sterling silver gray finish plate 5 1/2" in diameter set including ladle \$10.00



7596 Call bell sterling silver 3 1/4" high \$6.50



7597 Cheese plate and server sterling silver 6" in diameter complete, \$4.75



7598 Cocktail cup, sterling silver 3" high per dozen \$39.00



7594 Sherbet sterling silver gilt lined 3 1/4" high per dozen \$30.00



7600 Candelabra sterling silver bright or gray finish 5 1/2" high per pair, \$17.00



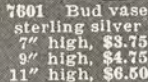
7603 Napkin clip, sterling silver, all initials, \$1.00



7602 Napkin clip, sterling silver pierced, \$1.25



7599 Mayonnaise set, sterling silver bowl, 5" in diameter complete, \$9.25



7601 Bud vase sterling silver 7" high, \$3.75 9" high, \$4.75 11" high, \$6.50



7607 French dressing bottle sterling top engraved glass 6 1/2" high, \$5.00



7608 Prize cup sterling silver, bright finish, price includes base, height for cup only: 7" high, \$14.50; 8" high, \$20.00; 9" high, \$23.00; 10" high, \$28.00



7604 Gravy boat and tray sterling silver 8 oz. capacity heavy weight, \$21.00



7605 Coaster set, sterling silver rim glass base 6 coasters with rack, \$6.00 8 coasters with rack, \$7.50 12 coasters with rack, \$10.50



7606 Salt and Pepper sterling silver 5 1/4" high per pair, \$5.50



7609 Compote sterling silver pierced border 5 1/2" high, \$5.00



7610 Sugar and cream sterling silver, gilt lined 2 1/2" high, \$13.50



7613 Ketchup bottle holder sterling silver pierced frame 3 1/4" high, \$10.00



7611 Candy dish sterling silver, shell pattern 8" long, \$12.50



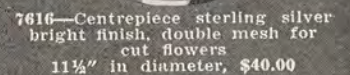
7614 Sandwich or luncheon tray sterling silver, oval shape pierced border: 9 1/2" long, \$12.00 11" long, \$15.00



7615 Double vegetable dish, bright or gray finish—lid may be used as separate dish \$33.00



7612 Salad plate sterling silver plain edge 8" in diameter per doz., \$83.00



7616 Centrepiece sterling silver bright finish, double mesh for cut flowers 11 1/2" in diameter, \$40.00

S. KIND & SONS, 1110 CHESTNUT ST. PHILADELPHIA

DUE TO UNUSUAL CONDITIONS PRICES ARE SUBJECT TO CHANGE

EVERY ARTICLE OUTSTANDING FOR ITS QUALITY AND USEFULNESS



7617 Mustard jar and spoon sterling silver glass lining 2 3/4" high \$2.50



7618 Butter dish sterling silver lid and plate, glass lining 6" in diameter, \$6.00



7619 Coffee cup and saucer, sterling silver Lenox china lining, 3 1/4" high per dozen, \$52.00



7620 Butter dish sterling silver, glass drainer, 6" in diameter, \$7.50



7621 Tea ball and stand sterling silver \$2.75



7622 Sherbet sterling silver pierced frame glass lining, 3 3/4" high, per dozen \$46.00



7623 Ice tub sterling silver glass lining, 6 1/2" in diameter, \$20.00



7624 Candelabra sterling silver colonial base, 3 3/4" high, per pair \$10.00



7625 Cathedral candlestick sterling silver 3 1/2" high, per pair, \$5.00



7626 Cheese and cracker dish and lid, glass sterling silver plate holder, 9 1/2" in diameter, \$21.00



7627 Bouillon cup sterling silver pierced frame Lenox china lining 4 1/2" in diameter per dozen, \$66.00



7628 Bon bon dish sterling silver pierced edge, 5 3/8" in diameter, \$3.50 spoon, \$1.50 complete, \$5.00



7629 Bon bon dish sterling silver heavy weight, side handles, 10 1/4" long \$12.50



7630 Bon bon basket, sterling silver, pierced rim 6" in diameter \$5.00



7631 Castor set sterling silver frame, 4 1/2" high 3 bottles, \$5.00 with 2 bottles \$3.75



7632 Centrepiece sterling silver thread edge, mesh to hold cut flowers 9" in diameter \$13.50



7633 Bon bon basket, sterling silver, shell pattern 6" long, \$6.50



7634 Cookie tray sterling silver bright finish, 8" in diameter, \$7.00



7635 Goblet sterling silver gilt lined, 6 1/2" high, per dozen, \$60.00



7636 Sugar and cream set, sterling silver, colonial design, gilt lined 4" high, \$17.50



7637 Compote sterling silver gadroon border 5 3/4" high \$10.00



7638 Tray, sterling silver for sugar and cream set 9" long, \$7.00



7639 Flower Vase sterling silver bright finish 8 1/2" high, \$5.00



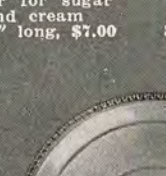
7640 Coffee set, sterling silver consisting of coffee pot, 8" high \$32.00; sugar bowl, 3" high, \$8.50 cream pitcher, 3" high, \$8.50 tray, 10" in diameter, \$18.50 complete, \$67.00



7641 Candlestick sterling silver
Plain Eng.
Fr. Pr.
8" high \$10.00 \$12.50
10" high 11.50 13.50
12" high 17.00 19.00



7642 Water pitcher, sterling silver, 2 quart capacity, 9 1/4" high, \$35.00

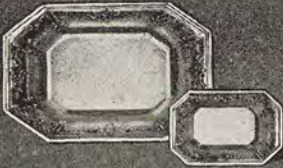


7643 Sandwich tray, sterling silver fancy edge, 9 1/2" in diameter, \$13.00

S. KIND & SONS, 1110 CHESTNUT ST. PHILADELPHIA

DUE TO UNUSUAL CONDITIONS PRICES ARE SUBJECT TO CHANGE

APPROPRIATE HOUSEHOLD ACCESSORIES OF STERLING SILVER



7644 Sterling silver almond dish, gray finish embossed design, 6 1/4 long \$7.50; individual dishes to match, 3/4" long per doz. \$20.00



7645 Cocktail cup sterling silver, good weight, 3" high per dozen, \$39.00



7646 Tea ball and stand, sterling silver, \$3.50



7647 Napkin ring sterling silver engine-turned 2 3/4" long, \$2.75



7648 Candelabra sterling silver bead edge, 4 1/4" high, per pair \$8.50; same with three branches \$10.00 pair



7649 Open salt sterling silver, blue glass lining, 2 1/4" in diameter \$4.25 pair



7650 Open salt individual size sterling silver frame glass lining, 1 3/4" in diameter, \$2.75 pair



7651 Cathedral candlestick, sterling silver, 2 5/8" high per pair, \$5.00



7652 Jam jar sterling silver lid and spoon 4" high \$4.00



7657 Sugar basket, sterling silver, blue glass lining 3 1/4" high \$7.00



7653 Jelly dish and server, sterling silver, gray finish dish 5 1/4" in diameter, complete \$9.00



7654 Sugar and cream set, sterling silver, 3 3/4" high \$6.00 pair; tray 8 1/4" long, \$5.00 complete, \$11.00



7655 Coaster set, sterling silver on glass 3" in diameter with rack set of 6, \$7.50; with 8 coasters \$9.50; with 12 coasters, \$12.50



7656 Candlesticks sterling silver, 10" high, per pair \$13.50



7658 Sugar and cream set sterling silver, 2 3/4" high per pair, \$15.00



7659 Domino sugar tray, sterling silver pierced frame, 6" long, \$3.50



7662 Salt and pepper, sterling silver, colonial design, 4 1/4" high, per pair \$3.75



7663 Salt and pepper, sterling silver, hexagon design, 5 3/4" high, per pair, \$8.00



7664 Candy dish sterling silver, three sections, heavy weight 7 1/2" in diameter, \$13.50



7660 Bread tray sterling silver, pierced border, 11" long, \$15.00



7661 Sweet pea vase sterling silver, gilt screen to hold flowers in place, 4 1/2" high \$11.00



7666 Bon bon dish sterling silver, design of leaf 6" in diameter, \$6.50



7665 Bread and butter plate, sterling silver thread edge, 6" in diameter, per dozen \$30.00



7667 Sandwich or cake tray china with sterling silver edge, 11 3/4" in diameter, \$15.00



7668 Flower vase sterling silver, fluted top, 5 1/2" high, \$6.50 7" high, \$10.00 8 1/2" high, \$12.50



7669 Open vegetable dish, sterling silver heavy weight, 9 3/4" long, \$20.00



7670 Beverage mixer sterling silver, quart capacity, hammered design, \$37.00; plain design, \$33.00

S. KIND & SONS, 1110 CHESTNUT ST. PHILADELPHIA

DUE TO UNUSUAL CONDITIONS PRICES ARE SUBJECT TO CHANGE

MODERN HOMES HAVE USE. FOR THESE ARTICLES



7671 5 Piece tea set consisting of coffee pot, 12" high, 6 cup capacity, \$10.50; tea pot, 11½" high 5 cup capacity, \$10.00; sugar bowl, 7", \$6.50 cream pitcher, 5", \$5.00; waste bowl, 4½", \$3.75 set complete, \$35.00



7674 Frigidaire dessert cup 2¾" long, set of 8 cups, \$8.00



7672 Double vegetable individual size gadroon border 7¾" long, \$5.00



7673 Bread tray embossed design, 13½" long, \$3.50



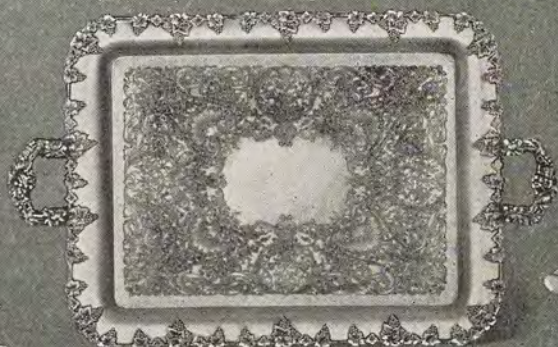
7677 Prize cup, gray finish, gilt lined, price includes base; height for cup only, 4¾", \$3.25; 6", \$4.25; 8¼" \$5.00; 10" \$6.50



7675 Centrepiece plain polished, 12¼" in diameter \$7.50



7676 Asparagus dish removable drainer, tray can be used as platter, 15½" long, \$11.50 asparagus tongs, \$2.50; set complete, \$14.00



7680 Serving tray, reproduction of English Sheffield, heavily silver plated, 18" long, \$21.00; 20" long, \$24.00; 22" long, \$29.00



7678 Fruit dish shell design, 9½" long, \$5.00



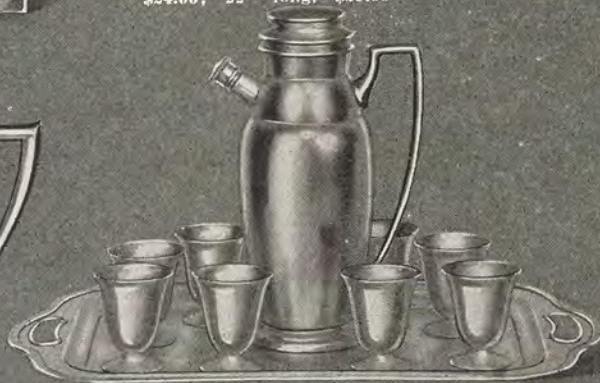
7679 Ice tub and tongs, gray finish tub, 6" in diameter complete, \$4.25



7681 Sugar and cream set on tray 11" long, set complete \$5.75



7682 Water pitcher thread edge, 2 quart capacity, 8½" high \$11.50



7683 Beverage set consisting of shaker, quart capacity 11" high, \$6.00; 6 cups 3" high, \$8.50; tray 18" long, \$10.00 set complete, \$24.50



7684 Beverage mixer, gray finish 12½" high, 2 quart capacity, \$7.50

S. KIND & SONS, 1110 CHESTNUT ST. PHILADELPHIA

DUE TO UNUSUAL CONDITIONS PRICES ARE SUBJECT TO CHANGE

SILVER PLATED WARE THE HOUSEWIFE WILL APPRECIATE



7685 7686 7687

SPECIAL VALUES

- 7685 Double vegetable dish, bright finish 11" long, \$6.00
- 7686 Meat platter with well and tree 16" long, \$6.00
- 7687 Gravy boat and tray, 8 3/4" long capacity, 8 oz., \$6.00



7688 Bottle holder pierced frame to hold Worcestershire bottle, \$1.25; quart size for ginger ale bottle, \$1.75; for ketchup bottle 8 oz., \$1.25; for syphon bottle \$3.00



7689 Newspaper rack, 10" high, \$4.25



7692 Prize cup and base, gray finish, 5 1/2" high (size of cup only) \$2.00



7690 Compote for salted nuts or candies, 4 1/2" high \$2.25



7691 Round double vegetable dish, 3 partitions, 11 1/2" in diameter, \$10.00



7693 Candy dish 3 sections shell pattern, 7 1/2" long, \$3.50



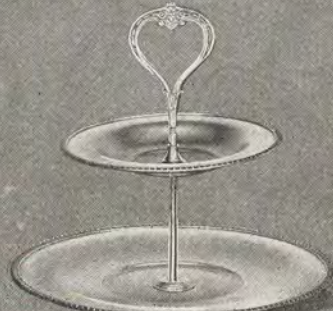
7694 Relish dish, 5 sections removable glass lining, 14" in diameter, \$7.50



7695 Prize cup, bright finish, gilt lined, price includes base height, for cup only, 5 1/2" high \$3.75; 7 1/2" high, \$4.50 3 3/4" high, \$6.00 12" high, \$9.50



7696 Coffee set, bright finish, consisting of coffee pot, 10" high, \$8.00; sugar bowl, 5 1/2" high, \$3.00; cream pitcher 3 1/2" high, \$3.00; tray, 15 1/2" long, \$6.00 set complete, \$19.50



7697 Sandwich and cake tray, thread edge, bright finish, 8 1/2" high, \$7.00



7698 Serving tray embossed centre, English reproduction 10" in diameter, \$6.50; 12" in diameter, \$8.50; 14" in diameter, \$10.00



7699 Water pitcher bright finish, 9" high 5 pint capacity, \$7.50



7700 Sandwich tray embossed design, 10" in diameter, \$3.50

S. KIND & SONS, 1110 CHESTNUT ST. PHILADELPHIA

DUE TO UNUSUAL CONDITIONS PRICES ARE SUBJECT TO CHANGE