

PALMS of ZABALO

Roberto Aguinda, Lorenzo Criollo, Mauricio Mendua, Robin Foster, Margaret Metz

Photos and Production by: R. B. Foster & M. R. Metz, with support from the Andrew Mellon Foundation and the Cofán community of Zabalo.

© Centro Cofán Zabalo and Environmental & Conservation Programs, The Field Museum, Chicago, IL 60605 USA. [RRC@fmmh.org] Rapid Color Guide # 5 version 1.6



1 *omacho'si*  
Aiphanes ulei



2 *tuinfa*  
Astrocaryum chambira



3 *tuinfa*  
Astrocaryum chambira



4 *firirima*  
Astrocaryum jauari



5 *firirima*  
Astrocaryum jauari



6 *e'tso*  
Astrocaryum murumuru



7 *e'tsocho*  
Astrocaryum murumuru



8 *sapoje*  
Attalea butyracea



9 *chapia inayova*  
Attalea insignis



10 *inayova*  
Attalea maripa



11 *inzapara*  
Bactris concinna



12 *o'ma*  
Bactris gasipaes



13 *manambe o'ma*  
Bactris hirta



14 *omacho'si*  
Bactris riparia



15 *omacho'si antian*  
Bactris simplicifrons



16 *tsintsincho*  
Bactris maraja



17 *coincoiñocho*  
Bactris sp.



18 *purivocho'si*  
Chamaedorea pinnatifrons



19 *arponcho*  
Desmoncus giganteus



20 *arponcho*  
Desmoncus mitis

PALMAS de ZABALO

Roberto Aguinda, Lorenzo Criollo, Mauricio Mendua, Robin Foster, Margaret Metz

Fotos y Produccion por: R. B. Foster & M. R. Metz, con el apoyo del Andrew Mellon Foundation, y la comunidad Cofán de Zabalo.

© Centro Cofán Zabalo y Environmental & Conservation Programs, The Field Museum, Chicago, IL 60605 USA. [RRC@fmnh.org] Rapid Color Guide # 5 version 1.6



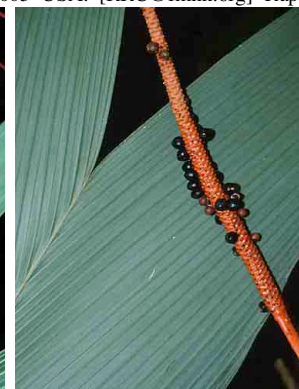
21 *di'va*  
Euterpe precatoria



22 *munda'si*  
Geonoma brongniartii



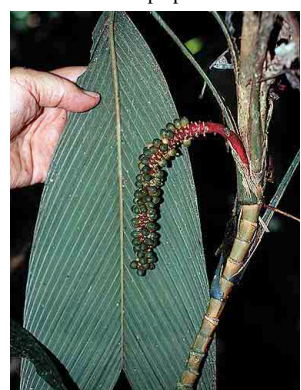
23 *tsaoje'si*  
Geonoma longepedunculata



24 *cofaje*  
Geonoma macrostachys



25 *tsaoje'si zu'je*  
Geonoma maxima



26 *ttesi cofaje*  
Geonoma stricta var. piscicauda



27 *mundasi*  
Geonoma stricta var. trailii



28 *ttesi cofaje*  
Geonoma triglochis



29  
Geonoma sp.



30 *zu'jecho*  
Hyospathe elegans



31 *bom'bo*  
Iriartea deltoidea



32 *bom'bo*  
Iriartea deltoidea



33 *canongocho*  
Mauritia flexuosa



34 *nijon'cho*  
Oenocarpus bataua



35 *patisa'cco*  
Ammandra dasyneura



36 *shishije*  
Phytelephas tenuicaulis



37 *anacco*  
Socratea exorrhiza



38 *anacco, tssa tssa'vo*  
Socratea exorrhiza



39 *ccu'ye*  
Wettinia maynensis



40 *ccu'ye*  
Wettinia maynensis