

**EXPLANATION OF PLATE I.**

**John Valentine Satterlee.**



**EXPLANATION OF PLATE II.**

**Figure 1. Keshena, Shawano County, Wisconsin, from north hill, showing State Highway 47.**

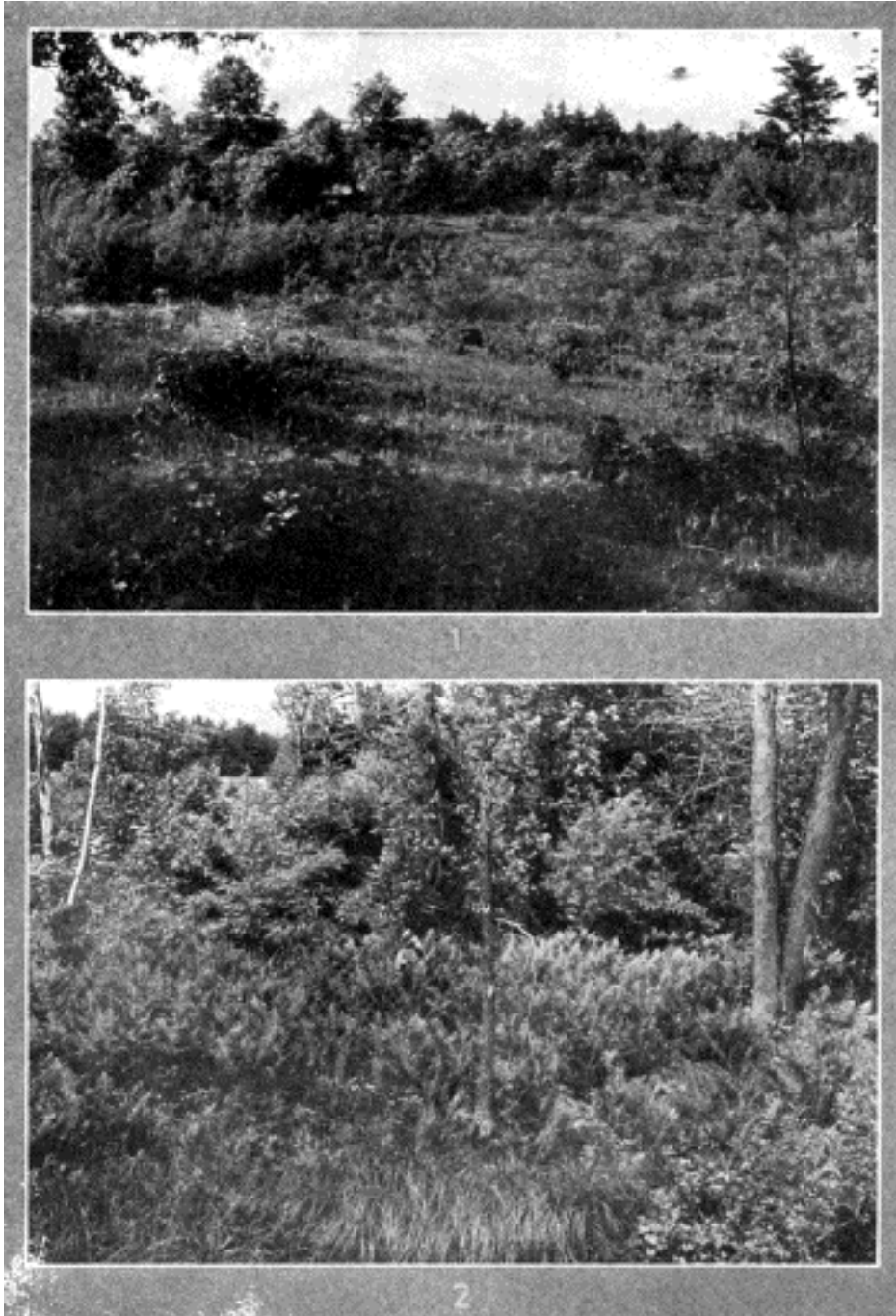
**Figure 2. Typical Menominee family at Crow Settlement near West Branch of Wolf River, Menominee Reservation. William Satterlee and wife, nephews, brother John V. Satterlee and uncle Jim Blackcloud.**



**EXPLANATION OF PLATE III.**

**Figure 1. Clay-sand forest in lake region of Menomini Reservation. Certain types of medicines are only found here.**

**Figure 2. Deciduous forest, river bottom soil near Wolf River, where an entirely different type of medicines is found.**



**EXPLANATION OF PLATE IV.**

**Figure 1. Wisho'nakwît, Menomini medicine man, at his home near Keshena.**

**Figure 2. Louise Amor, Menomini medicine woman, in her tribal dress with applique embroidery on broadcloth.**



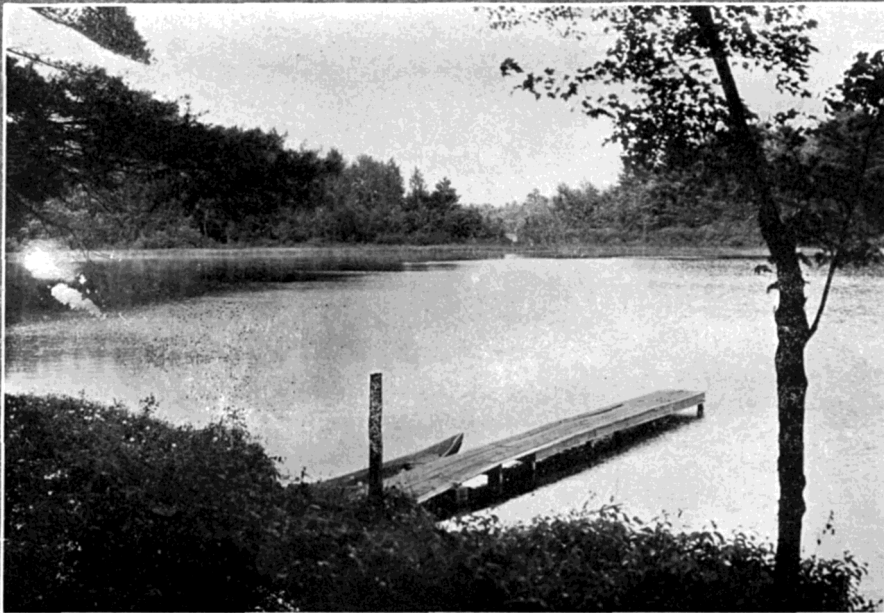
**EXPLANATION OF PLATE V.**

**Figure 1. Keshena Falls of the Wolf River, a mile north of Keshena.  
The source of hydro-electric power for the reservation.**

**Figure 2. Lake La Mote, one of the small chain of lakes in the southeastern portion of  
the reservation.**



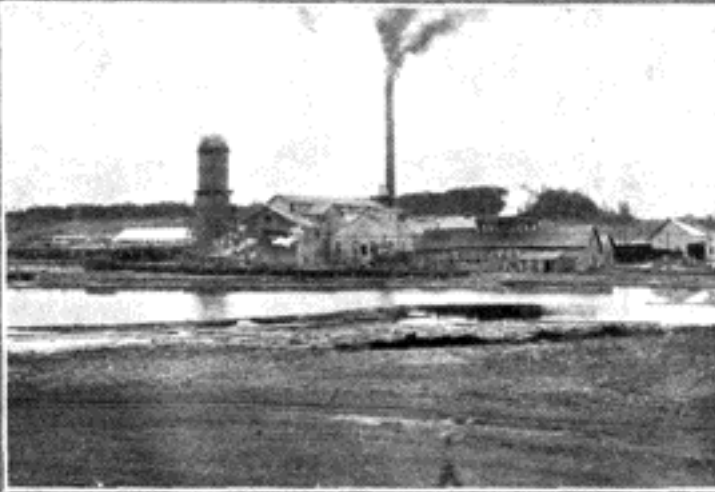
1



2

**EXPLANATION OF PLATE VI.**

- Figure 1. Menomini sawmill at Neopit, Wisconsin. An industrial mill for the Menomini.**  
**Figure 2. Forest nursery of white and Austrian pine, Neopit Operation Farm, near Keshena.**  
**Figure 3. Pagan cemetery. near Keshena, where Chief Oshkosh is buried.**  
**Figure 4. The Menomini Spirit Rock on old Military Road, from Keshena Falls to Oconto.**



1



2



3



4

**EXPLANATION OF PLATE VII**

- Figure 1. White Oak (*Quercus alba* L.). Source of medicine and wood.**  
**Figure 2. Hard Maple (*Acer saccharum* Marsh.). Source of maple sugar.**  
**Figure 3. Slippery Elm (*Ulmus fulva* Mx.). Source of medicine and fiber.**  
**Figure 4. Butternut (*Juglans cinerea* L.). Source of medicine and dye.**



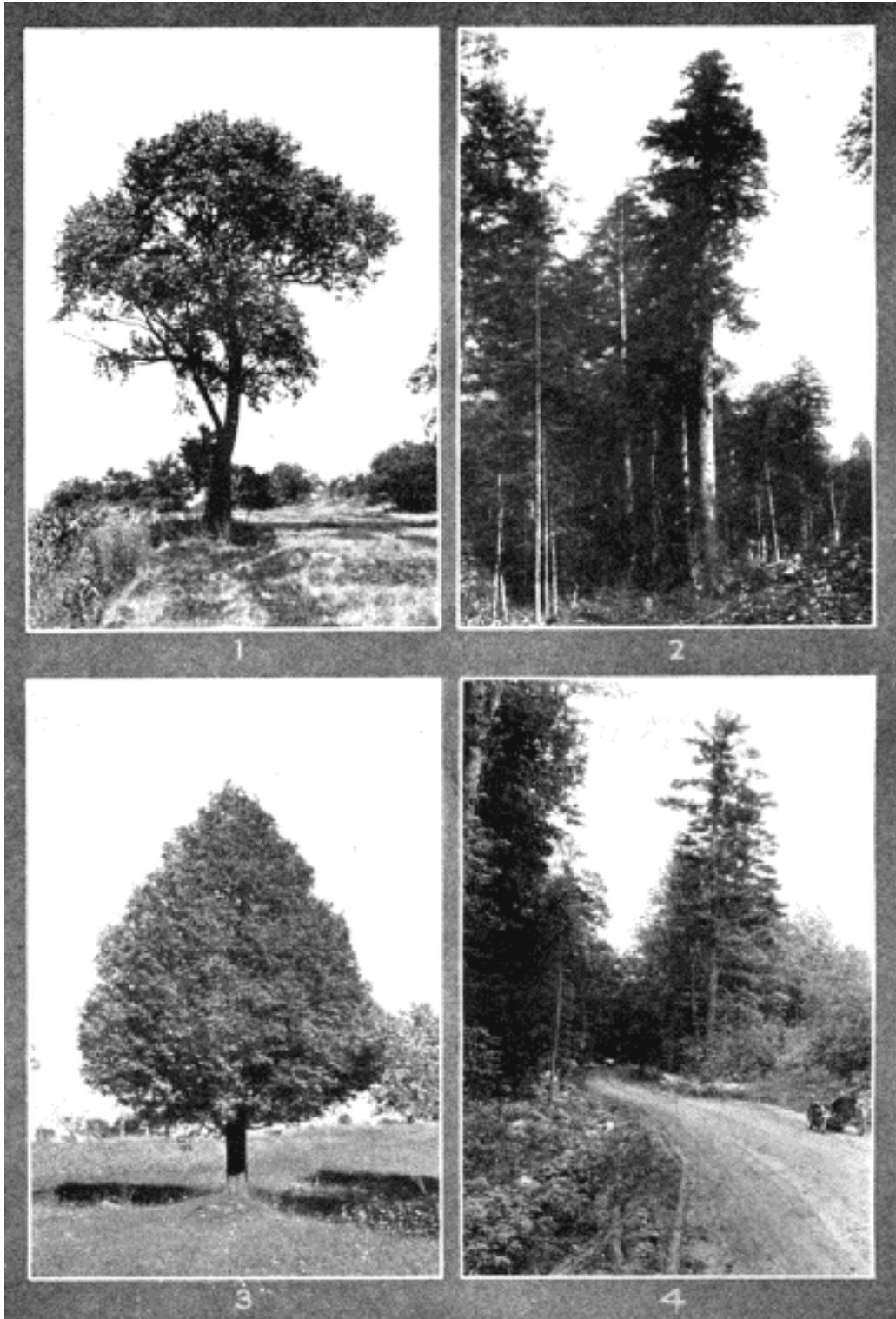
**EXPLANATION OF PLATE VIII.**

**Figure 1. Choke Cherry (*Prunus virginiana* Mill.). Source of medicine and food.**

**Figure 2. Hemlock (*Tsuga canadensis* Carr.). Source of medicine, dye and tanning material.**

**Figure 3. Arbor-vitae or White Cedar (*Thuja occidentalis* L.). Source of fiber and medicine.**

**Figure 4. State Highway 47 on Moccasin Hill near Neopit, Menomini Reservation.**





**EXPLANATION OF PLATE IX.**

**Figure 1. Shellbark Hickory (*Carya ovata* (Mill.) K. Koch). Source of food and wood.**

**Figure 2. Beech (*Fagus grandifolia* Ehrh.). Source of medicine, food and wood.**

**Figure 3. Black Ash (*Fraxinus nigra* Marsh.). Source of medicine and wood.**

**Figure 4. Staghorn Sumac (*Rhus typhina* L.). Source of beverage and medicine.**



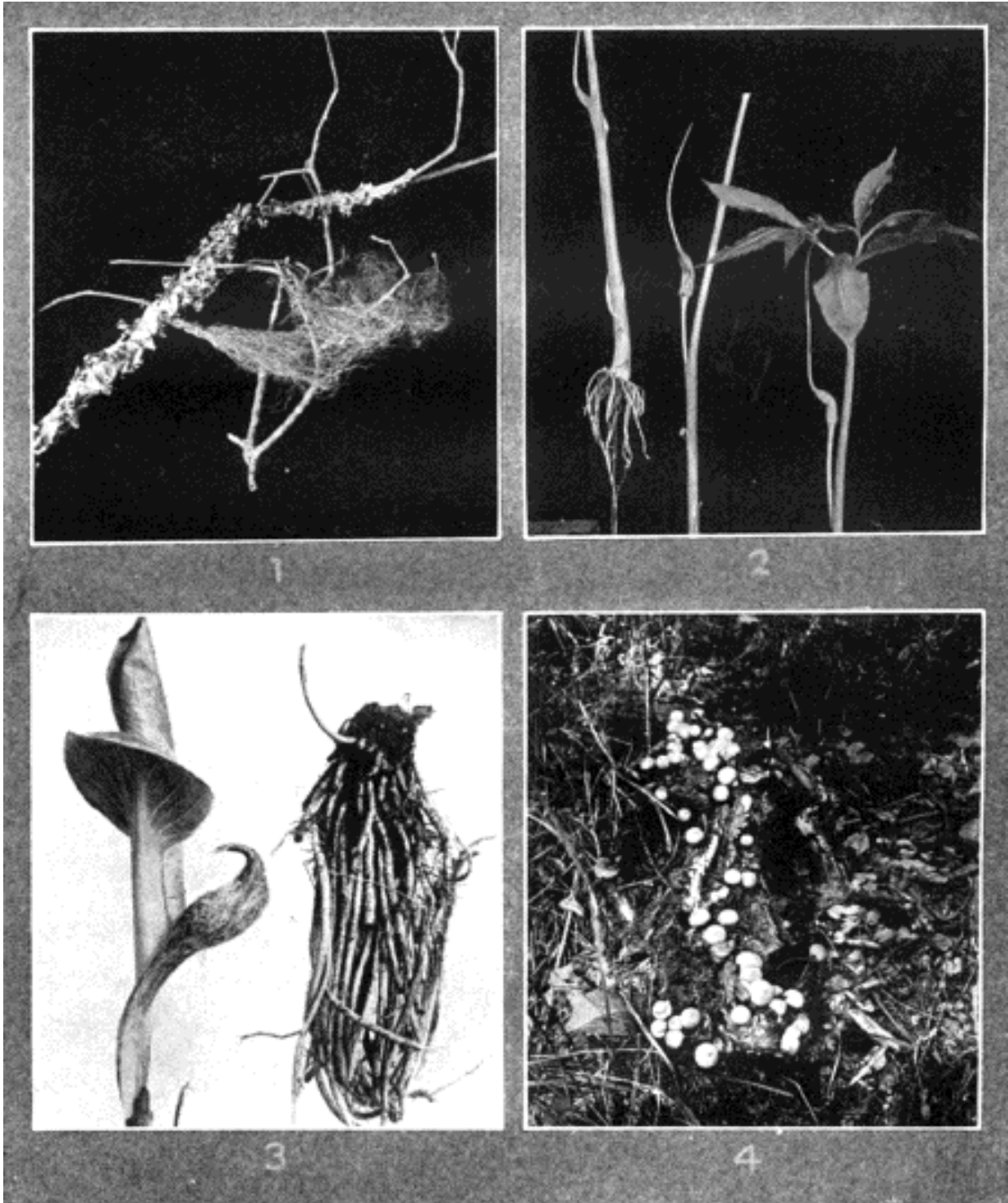
**EXPLANATION OF PLATE X.**

**Figure 1. Tree Lichen (*Sticta glomulifera*). Source of food and medicine.**

**Figure 2. Dragon Root (*Arisaema dracontium* (L.) Schott). Source of medicine.**

**Figure 3. Skunk Cabbage (*Symplocarpus foetida* (L.) Nutt.). Source of medicine.**

**Figure 4. Gem Puffballs (*Lycoperdon pyriforme* Schaeff.). Source of medicine and sorcery.**



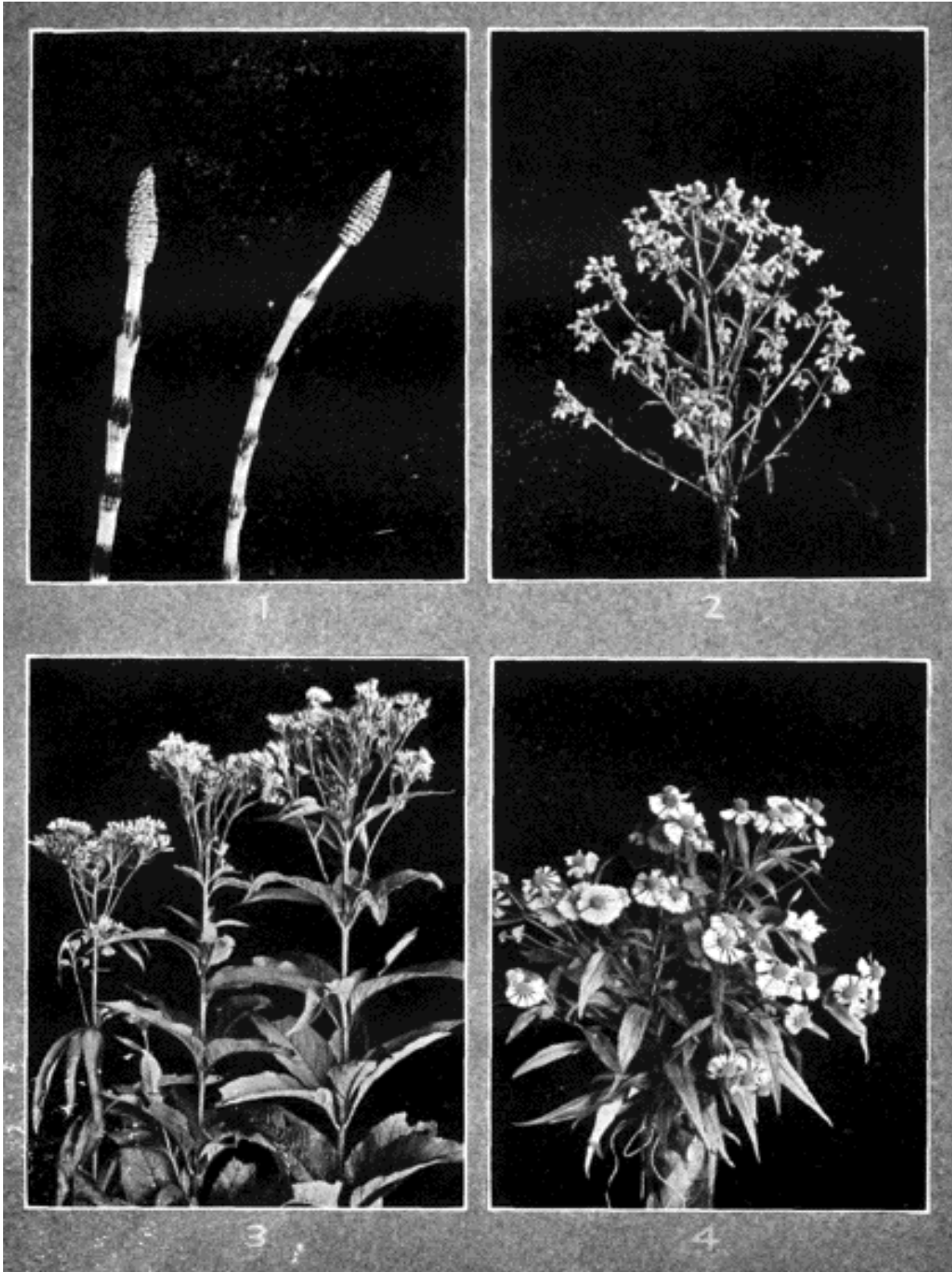
EXPLANATION OF PLATE XI.

Figure 1. Field Horsetail (*Equisetum hyemale* L.). Source of medicine and scouring material.

Figure 2. Mouse-ear Everlasting (*Gnaphallium polycephalum* Mx.). Source of medicine.

Figure 3. Joe-pye Weed (*Eupatorium purpureum* L.). Source of medicine.

Figure 4. Sneezeweed (*Helenium autumnale* L.). Source of medicine.



**EXPLANATION OF PLATE XII.**

**Figure 1. Modern Menomini house in the Crow Settlement.**

**Figure 2. Blue-eyed Grass (*Sisyrinchium albidum*, Raf.). Source of medicine and sorcery.**

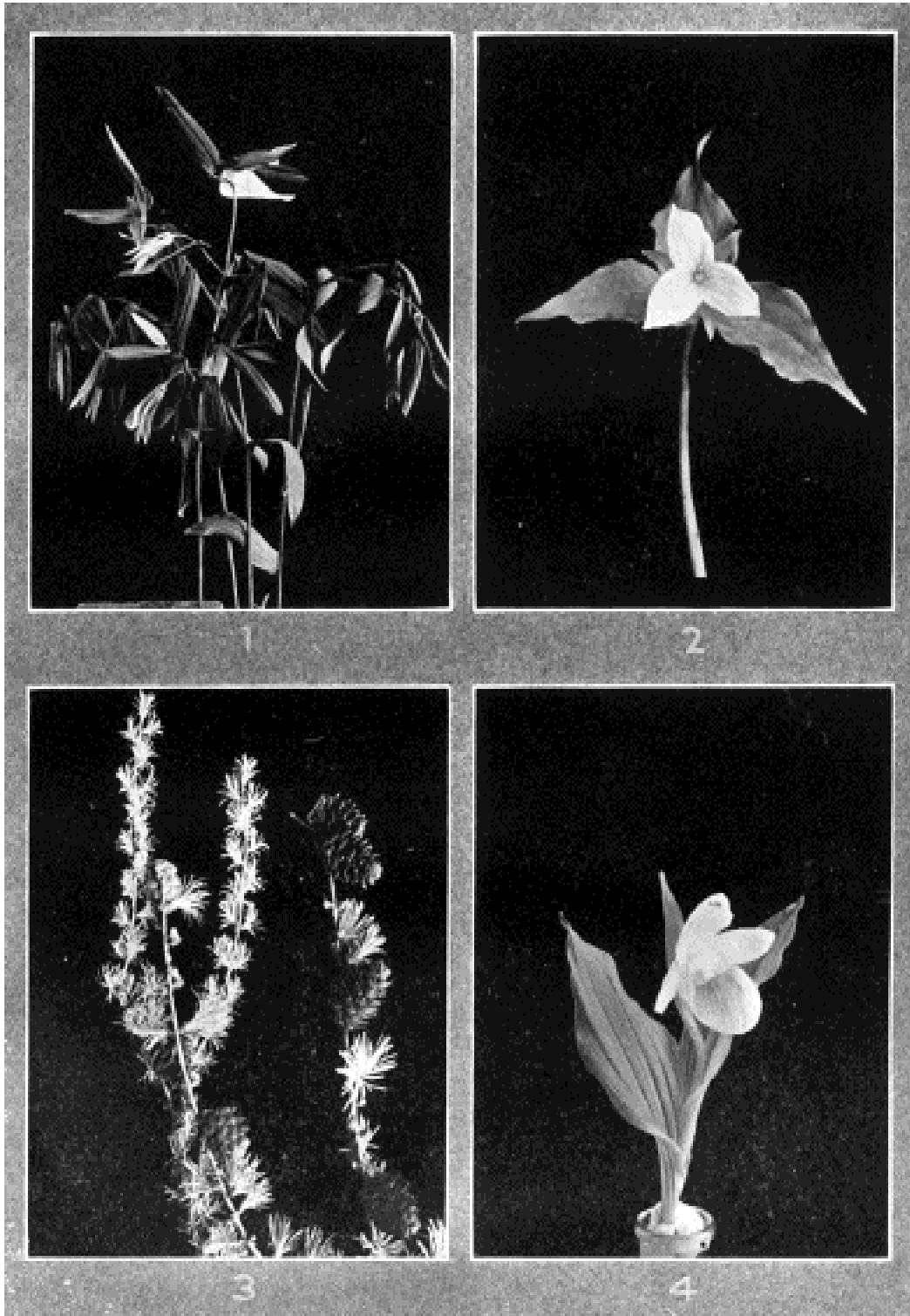
**Figure 3. Dutchman's Breeches (*Dicentra cucullaria* (L.) Bernh.). A Menomini love-charm.**

**Figure 4. Basswood (*Tilia americana* L.). Chief fiber plant of the Menomini.**



EXPLANATION OF PLATE XIII.

- Figure 1. Bellwort (*Uvularia grandiflora* Sm.). Source of a Menomini medicine.  
Figure 2. Large-flowered Trillium (*T. grandiflorum* (Mx.) Salisb.). Source of various medicines.  
Figure 3. Tamarack (*Larix laricina* (DuRoi) Koch). Source of medicines.  
Figure 4. Stemless Ladies' Slipper (*Cypripedium acaule* Ait.). Source of medicine.



**EXPLANATION OF PLATE XIV.**

**Figure 1.** Lady's Sorrel (*Oxalis corniculata* L.). Source of a yellow dyestuff .

**Figure 2.** Bloodroot (*Sanguinaria canadensis* L.). Source of medicine and dye.

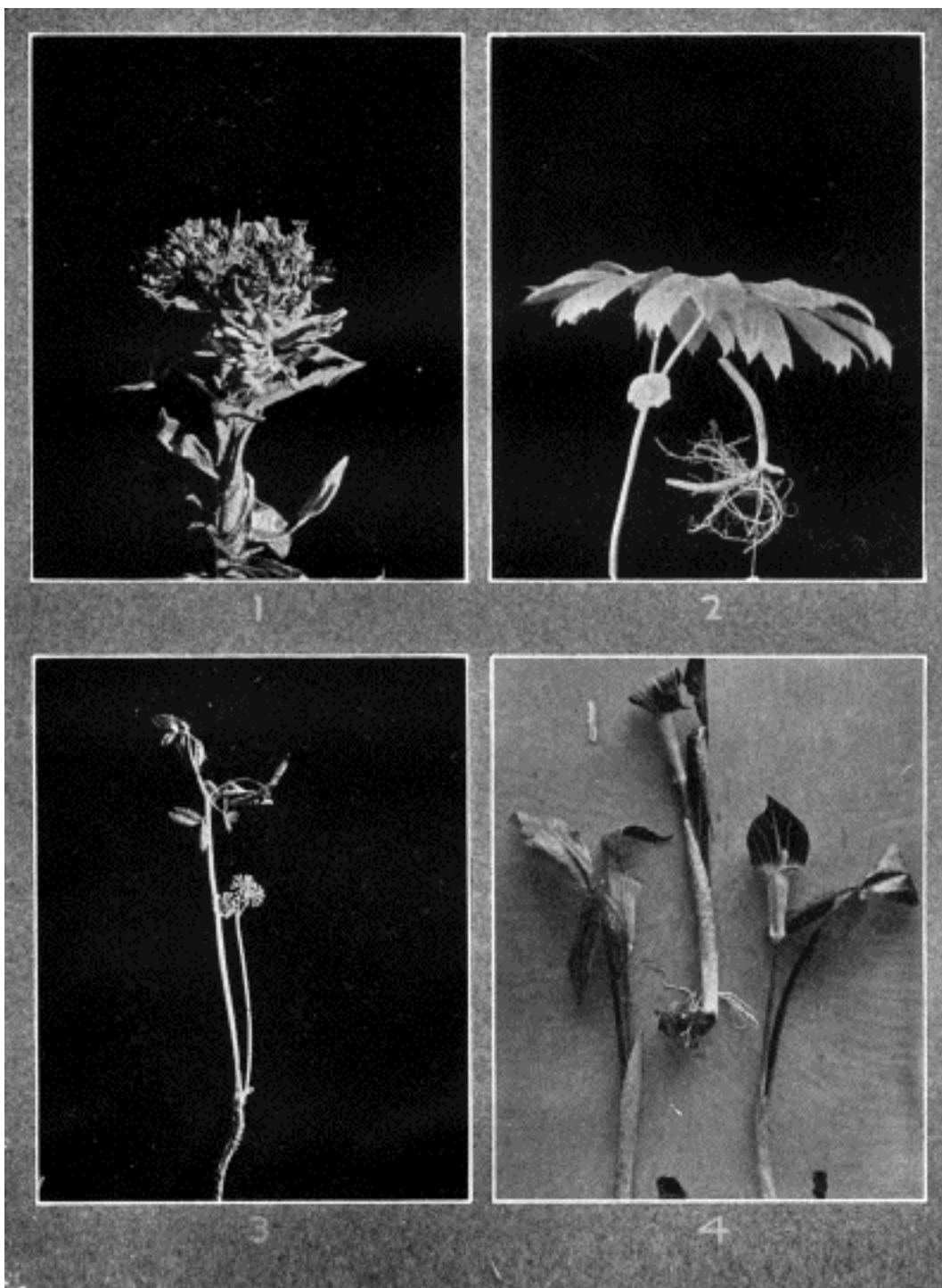
**Figure 3.** Northern Clintonia (*C. borealis* (Ait.) Raf.) with which dog poisons his teeth.

**Figure 4.** Pasture Rose (*Rosa humilis* Marsh.). Source of medicine.



EXPLANATION OF PLATE XV.

- Figure 1. Butterfly Weed (*Asclepias tuberosa* L.). Source of various remedies.  
Figure 2. May Apple (*Podophyllum peltatum* L.). Source of potato bug poison.  
Figure 3. Indian Spikenard (*Aralia racemosa* L.). Source of medicine and food.  
Figure 4. Jack-in-the-pulpit (*Arisaema triphyllum* (L.) Schott.). Source of medicine.



EXPLANATION OF PLATE XVI.

Figure 1. Yarrow (*Achillea millefolium* L.). Source of medicine.

Figure 2. Common Elderberry (*Sambucus canadensis* L.). Source of purgative medicine.

Figure 3. Hazelnut (*Corylus americana* Walt.). Source of medicine, fiber and food.

Figure 4. Maple-leaved Viburnum (*T. acerifolium* L.). Source of medicine.



1



2



3



4



**EXPLANATION OF PLATE XVII.**

**Figure 1. Nannyberry (*Viburnum lentago* L.). Source of food.**

**Figure 2. High-bush Cranberry (*Viburnum opulus americanus* (Mill.) Ait.). Source of food and medicine.**

**Figure 3. Yellow Pimpernel (*Taenidia integerrima* (L.) Drude). Source of medicine.**

**Figure 4. Blue Vervain (*Verbena hastata* L.). Source of medicine.**



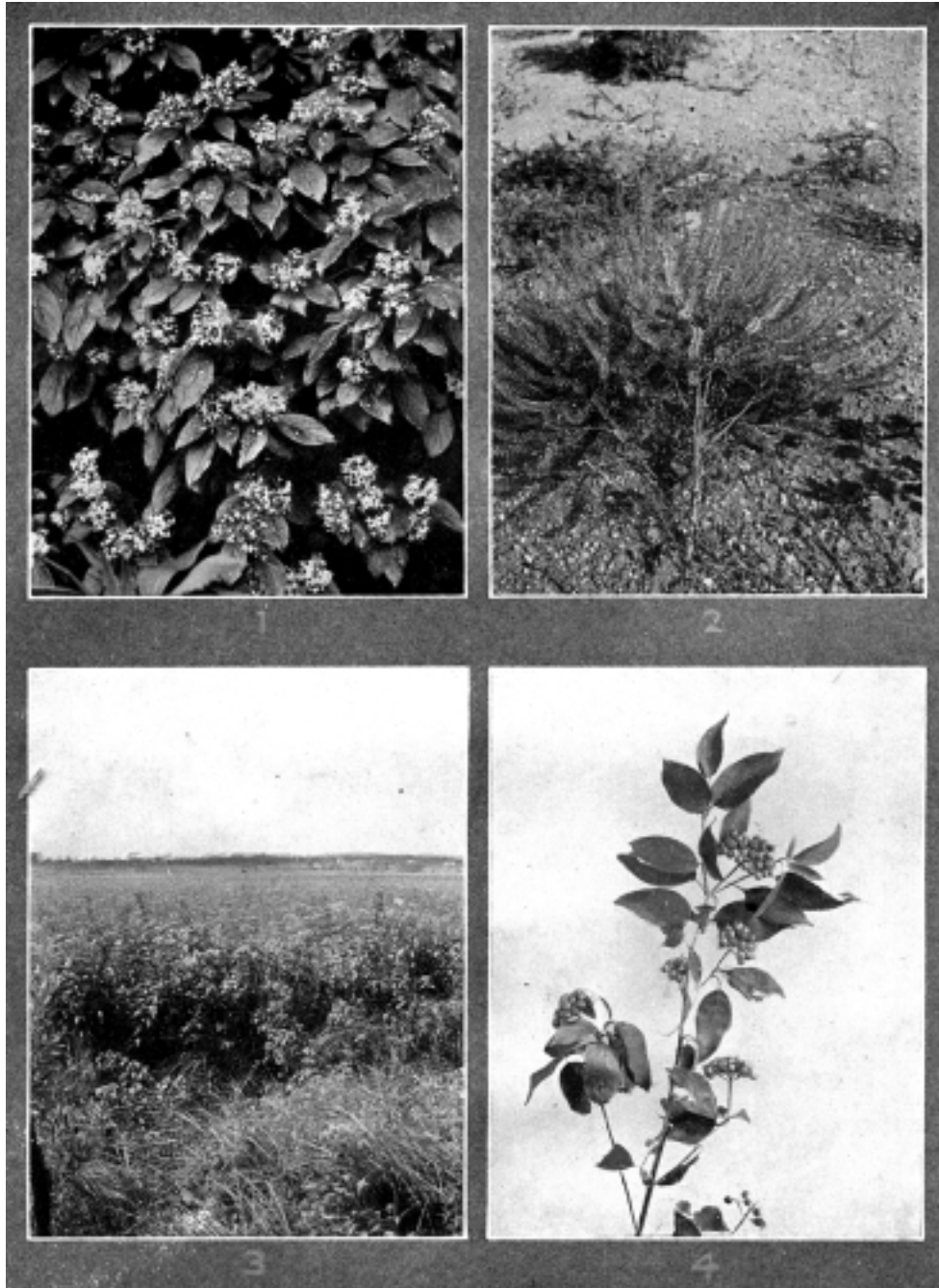
EXPLANATION OF PLATE XVIII.

Figure 1. Alternate-leaved Cornel (*Cornus alternifolia* L.f.). Source of medicine and tobacco.

Figure 2. Virginia Peppergrass (*Lepidium virginicum* L.). Source of medicine.

Figure 3. Joe-pye Weed (*Eupatorium purpureum* L.) and Boneset (*Eu. perfoliatum* L.). Sources of medicines.

Figure 4. Silky Cornel (*Cornus amomum* Mill.). Source of medicine and tobacco.



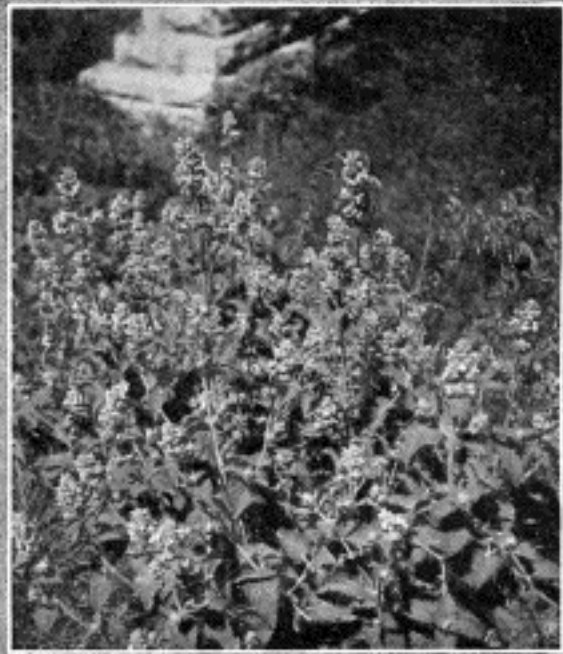
EXPLANATION OF PLATE XIX.

Figure 1. Blue-eyed Grass (*Sisyrinchium albidum* Raf.). Source of charm and medicine.

Figure 2. Wild Crane's Bill (*Geranium maculatum* L.). Source of medicine.

Figure 3. Wild Bergamot (*Monarda fistulosa* L.). Source of medicine.

Figure 4. Catnep (*Nepeta cataria* L.). Source of medicine.



EXPLANATION OF PLATE XX.

Figure 1. Prince's Pine (*Chimaphila umbellata* (L.) Nutt.) The smaller specimen is the source of a medicine.

Figure 2. Witch-hazel (*Hamamelis virginiana* L.). Source of rubbing oil, and magic seeds.

Figure 3. Wild Mint (*Mentha arvensis canadensis* (L.) Briquet) Source of medicine.

Figure 4. Peppermint (*Mentha piperita* L.).



EXPLANATION OF PLATE XXI.

Figure 1. New Jersey Tea (*Ceanothus americanus* L.). Source of beverage and medicine.

Figure 2. Liverleaf (*Hepatica acutiloba* D.C.). Source of medicine.

Figure 3. White Pine (*Pinus strobus* L.). Source of medicine, wood and pitch.

Figure 4. White Spruce (*Picea canadensis* (Mill.) B, S. P.). Source of medicines.



1



2



3

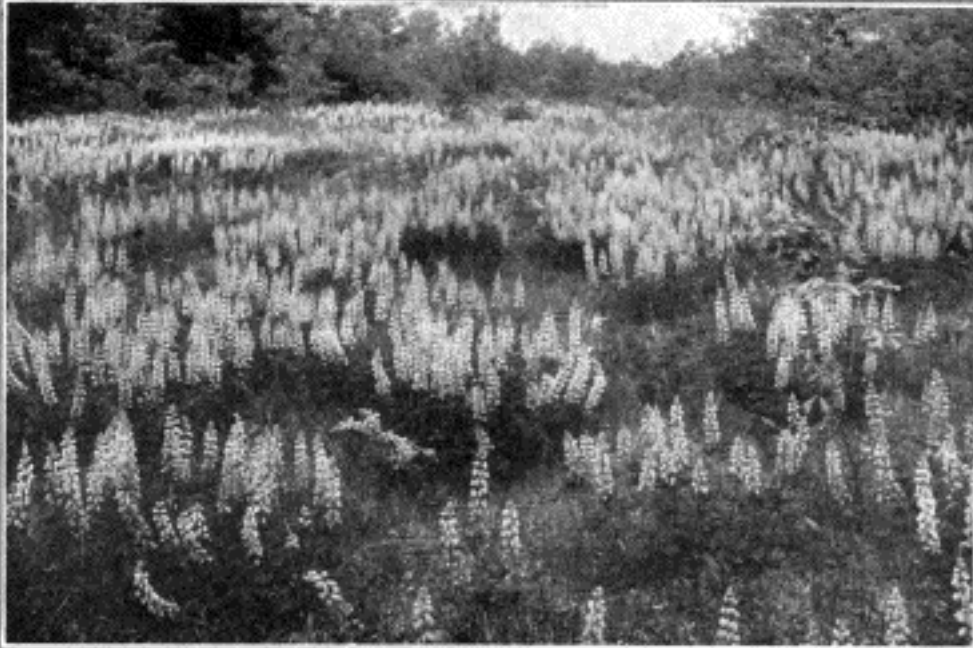


4

EXPLANATION OF PLATE XXII.

Figure 1. Lupines (*Lupinus perennis* L.) Source of horse medicine.

Figure 2. Showy Ladies' Slipper (*Cypripedium hirsutum* Mill.). Source of medicine.



1



2

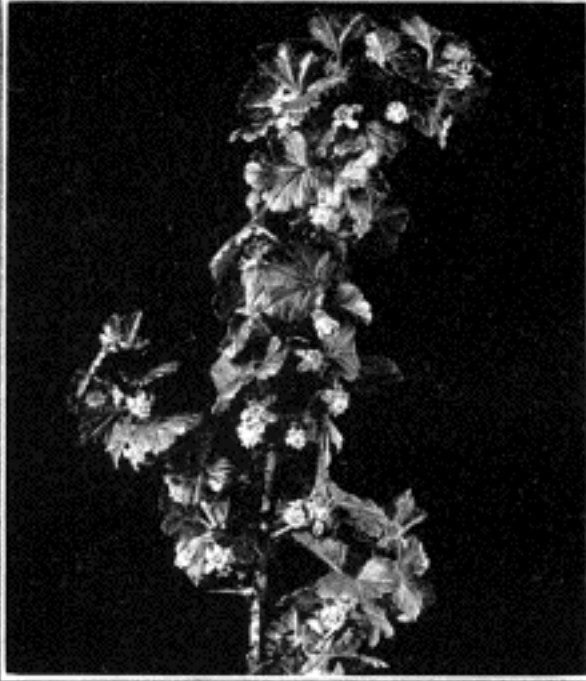
EXPLANATION OF PLATE XXIII.

Figure 1. Prickly Gooseberry (*Ribes cynosbati* L.). Source of food.

Figure 2. Prickly Ash (*Zanthoxylum americanum* Mill.). Source of medicines.

Figure 3. Black or Rum Cherry (*Prunus serotina* Ehrh.). Source of beverage and medicine.

Figure 4. Swamp Saxifrage (*Saxifraga pennsylvanica* L.). Source of medicine.



1



2



3



4

EXPLANATION OF PLATE XXIV.

Figure 1. Cow Parsnip (*Heracleum lanatum* Mx.). A sorcerers' medicine and hunting charm.

Figure 2. Angelica (*Angelica atropurpurea* L.). Source of medicine.

Figure 3. Edible Valerian (*Valeriana edulis* Nutt.). Source of medicines.

Figure 4. Great Mullen (*Verbascum thapsus* L.). Source of medicine.



1



2



3



4



EXPLANATION OF PLATE XXV.

Figure 1. Culver's Root (*Veronica virginica* L.). Source of medicine and mystic medicine.

Figure 2. Fragrant Bedstraw (*Galium triflorum* Mx.). Source of medicine.

Figure 3. Red Raspberry (*Rubus idaeus aculeatissimus* (C. A. Mey) Regel & Tiling). A seasoner of medicines and a source of food.

Figure 4. Blackberry (*Rubus allegheniensis* Porter). Source of medicine and food.



1



2



3



4

**EXPLANATION OF PLATE XXVI.**

**Figure 1. Menomini Squashes (*Cucurbita pepo* Var.). The kind dried in slices for winter use.**

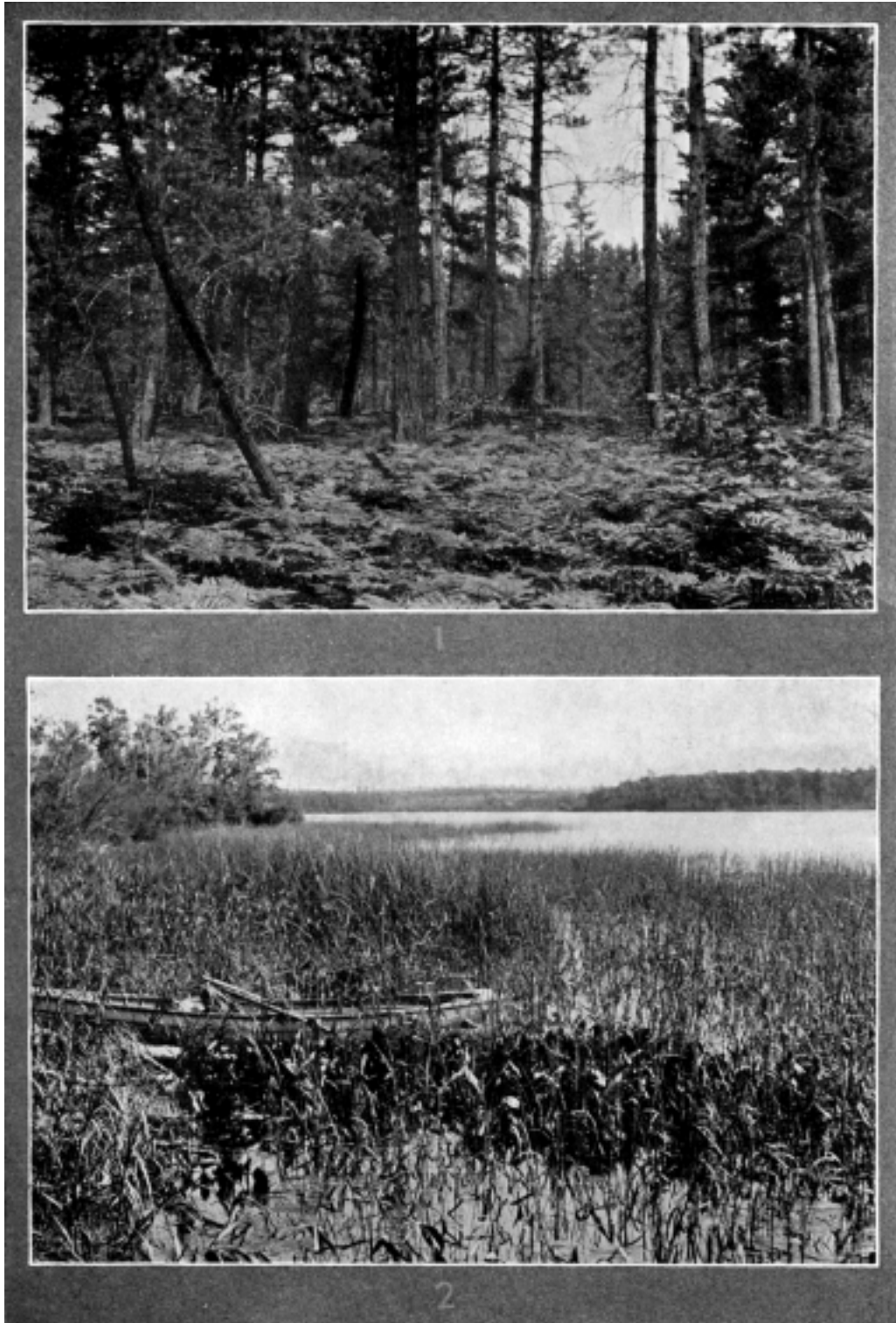
**Figure 2. Common Milkweed (*Asclepias syriaca* L.). A Menomini food.**



EXPLANATION OF PLATE XXVII.

Figure 1. Cinnamon Fern (*Osmunda cinnamomea* L.). Source of medicine and food.

Figure 2. A lake border with wild rice (*Zizania aquatica* L.).



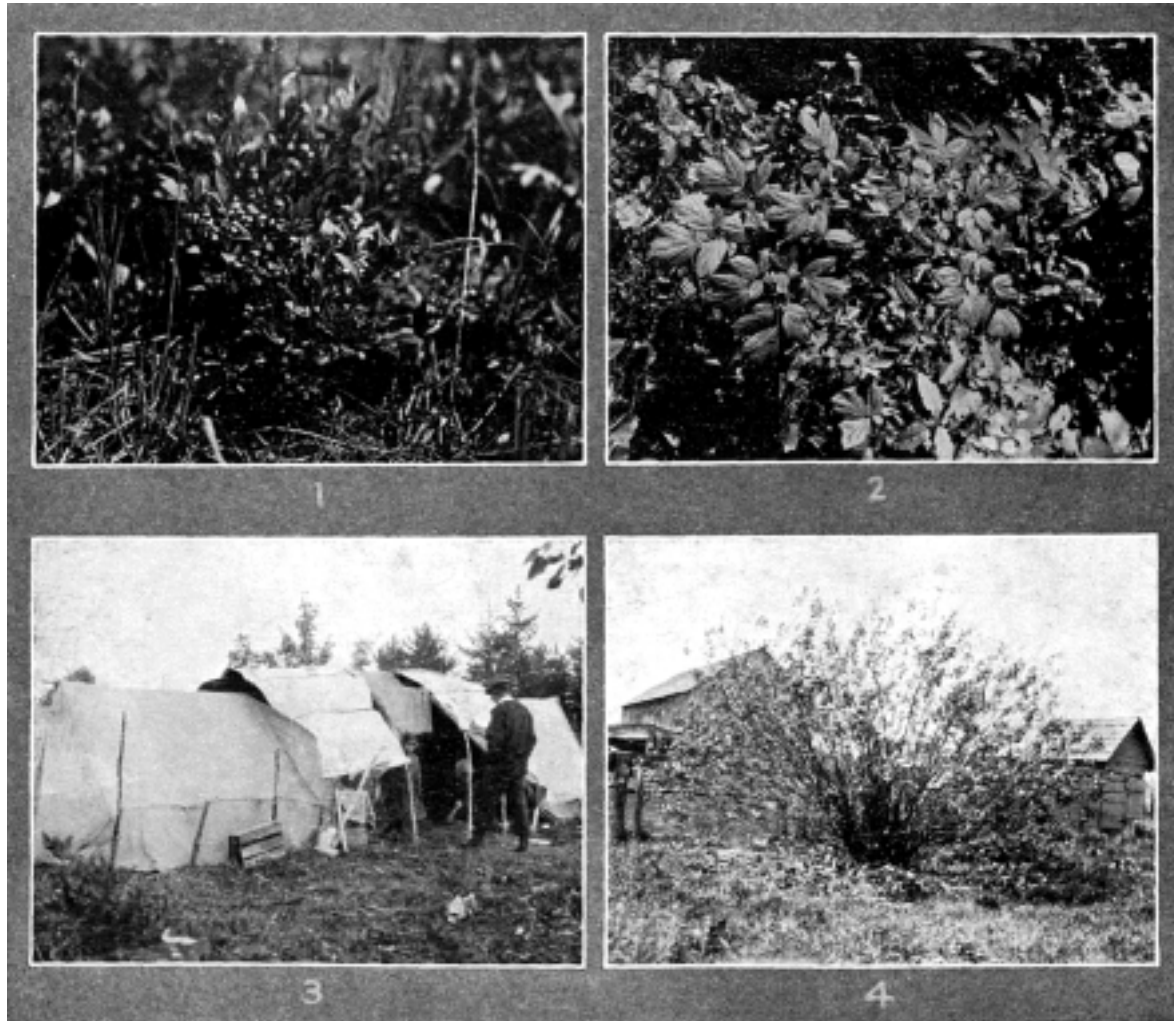
**EXPLANATION OF PLATE XXVIII.**

**Figure 1. Blueberries (*Vaccinium pennsylvanicum* Lam.). A favorite food of the Menomini.**

**Figure 2. Blue Cohosh (*Caulophyllum thalictroides* L.). Source of medicine.**

**Figure 3. A wild rice gatherer's camp.**

**Figure 4. Three-leaved Hop Tree (*Ptelea trifoliata* L.). A sacred medicine.**



EXPLANATION OF PLATE XXIX.

Figure 1. Threshing wild rice (*Zizania aquatica* L.).

Figure 2. Winnowing wild rice.

Figure 3. Groundnut (*Apios tuberosa* Moench.). Menomini wild white potato vine.

Figure 4. Drying beans Menomini fashion.



1



2



3



4

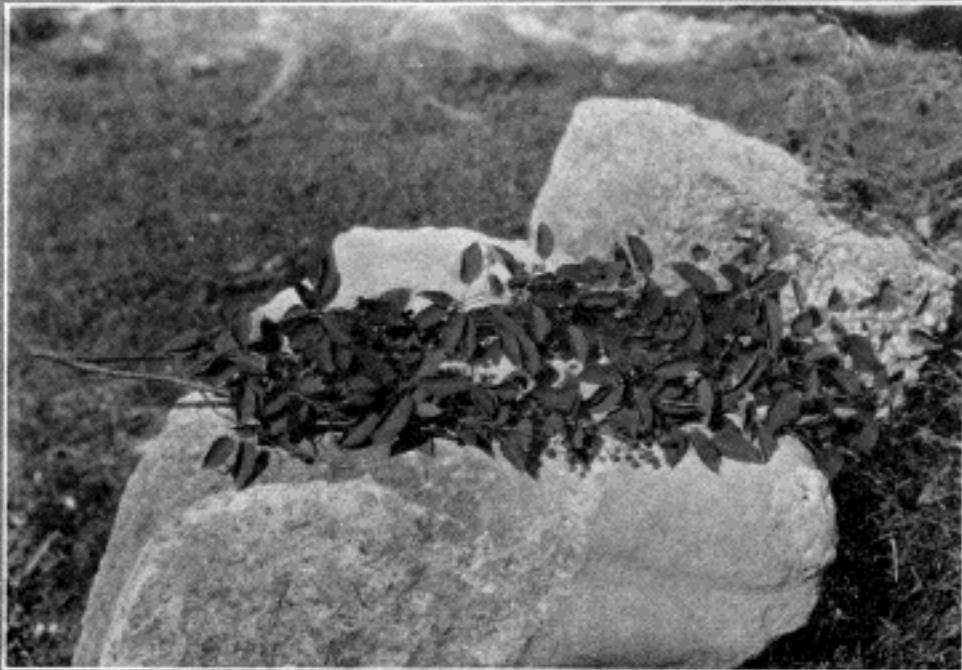
EXPLANATION OF PLATE XXX.

Figure 1. A single root of Groundnut (*Apios tuberosa* Wench.).

Figure 2. A branch of Juneberries (*Amelanchier huronensis* Wiegand) .



1



2

EXPLANATION OF PLATE XXXI.

Figure 1. Dandelion (*Taraxacum officinale* Weber). A Menomini food.

Figure 2. Rugel's Plantain (*Plantago rugelii* Dcne.). Source of medicine.

Figure 3. Arum-leaved Arrowhead (*Sagittaria arifolia* Nutt.). Menomini white potato.

Figure 4. Staghorn Sumac (*Rhus typhina* L.) . Source of a beverage, and medicine.



1



2



3



4

EXPLANATION OF PLATE XXXII.

Figure 1. Wild Onion (*Allium canadense*, Roth). A Menomini food.

Figure 2. Menomini cultivated potato (*Solanum tuberosum*). A variety always cultivated by the Menomini, the origin not known.

Figure 3. Yellow Ladies' Slipper (*Cypripedium parviflorum pubescens* (Willd.) Knight). Source of medicine.

Figure 4. Wild Leek (*Allium tricoccum* Ait.). A Menomini food.





EXPLANATION OF PLATE XXXIII.

Figure 1. Virginia Waterleaf (*Hydrophyllum virginianum* L.). A Menomini leaf food.

Figure 2. Wild Strawberry (*Fragaria virginiana* Duchesne). A Menomini berry food.

Figure 3. Woolly Sweet Cicely (*Osmorrhiza claytoni* (Mx.) Clarke). A food and medicine.

Figure 4. Marsh Marigold (*Caltha palustris* L.). Menomini spring greens.



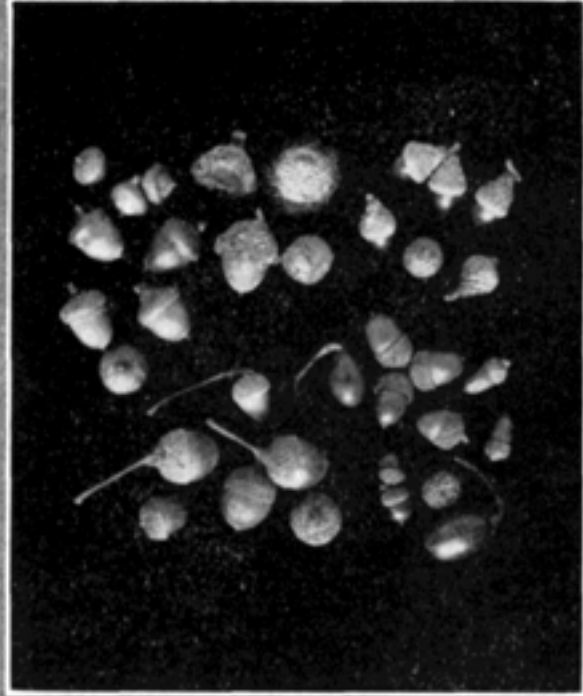
EXPLANATION OF PLATE XXXIV.

Figure 1. Wood Betony (*Pedicularis canadensis* L.). An evil charm of the Menomini.

Figure 2. Acorns of various species used as food by the Menomini,

Figure 3. Bittersweet (*Celastrus scandens* L.). A Menomini bark food.

Figure 4. Indian Paintbrush (*Castilleja coccinea* (L.) Spreng.). A Menomini love charm.



3

4

EXPLANATION OF PLATE XXXV.

Figure 1. Bishop's Cap (*Mitella diphylla* L.). A sacred bead seed.

Figure 2. Slender Nettle (*Urtica gracilis* Ait.). A Menomini fiber plant.

Figure 3. Cat-tail (*Typha latifolia* L.). A Menomini fiber plant.

Figure 4. Spreading Dogbane (*Apocynum androsaemifolium* L.). Menomini thread material.



EXPLANATION OF PLATE XXXVI.

- Figure 1. Spotted Touch-me-not (*Impatiens biflora* Walt.). A Menomini dye plant.  
Figure 2. Hoary Puccoon (*Lithospermum canescens* (Mx.) Lehm.). Source of a sacred bead.  
Figure 3. Menomini girls gathering Indian Paintbrush for Decoration Day, 1922.  
Figure 4. Cynthia (*Krigia amplexicaulis* Nutt.). A Menomini hunting charm.

