

COSMOPOLITAN CLUB

University of Georgia

presents

the

International Night

Some words by the President of the Club, Juri Vilval (Sweden); introduced
by Tom Pace (United States)

1. International Welcome
Dieter Pfannenstiel (Germany), Bill Royston (England),
Chantal Riso (France), Ramon Ponce DeLeon (Philippines),
Paul Waeber (Switzerland)
2. A Latin-American touch
Rogelio Marini (Argentina)
3. English as she is spoke
Bill Royston (England)
4. The spirit, the song, and the dance
Urmilla Bhatt (India), Razia Khatoon (Pakistan)
5. Six strings and a love song
Nghien Xi Thing (Vietnam)
6. A little ballet and ten fingers
Dieter Pfannenstiel (Germany)
7. Let's dance with Switzerland
Vreni Holzer and Paul Waeber (Switzerland)
8. Does Shakespeare sell?
Juan Celecia (Argentina)
9. A folk song, a coffee house, and U.S.A.
Moreen Silver (United States)
10. Rhythm, candles, and a dance
Rulia Hutasoit (Indonesia)
11. 'Longing for Home' in a song
Hong Shik Min (Korea), Marie Tippins (United States)
12. Of bulls and men
Alberto Forcadas and Javier Tomas (Spain)
13. Music to leave by
Juan Celecia (Argentina)



FAMOUS ENTERTAINER AND ATHLETE
TO SPEAK

Dr. P.D.Q. Monk, M.D., Ph.D.,
D.D.T., National Vice Chairman
of the NAAACP, will address our
local Chapter soon. The title
of his address will be Equality,
Integration and the Future. Dr.
Monk is one of the Nation's
leading "Modern Authorities" on
psychology, sociology, anthro-
pology and philosophy.

EMORY UNIVERSITY
Emory University, Ga.

THE EMORY UNIVERSITY SCHOOL OF Business Administration cordially invites you to meet with the alumni of the School at their annual dinner on Friday evening, June 6th, Piedmont Driving Club. Social hour at 6:30 p.m.; dinner (informal) at 7:15.

Mr. Marion B. Folsom, Treasurer of the Kodak Company and Chairman of the Committee for Economic Development, will speak on the subject: "Economic Progress in a Re-armed World."

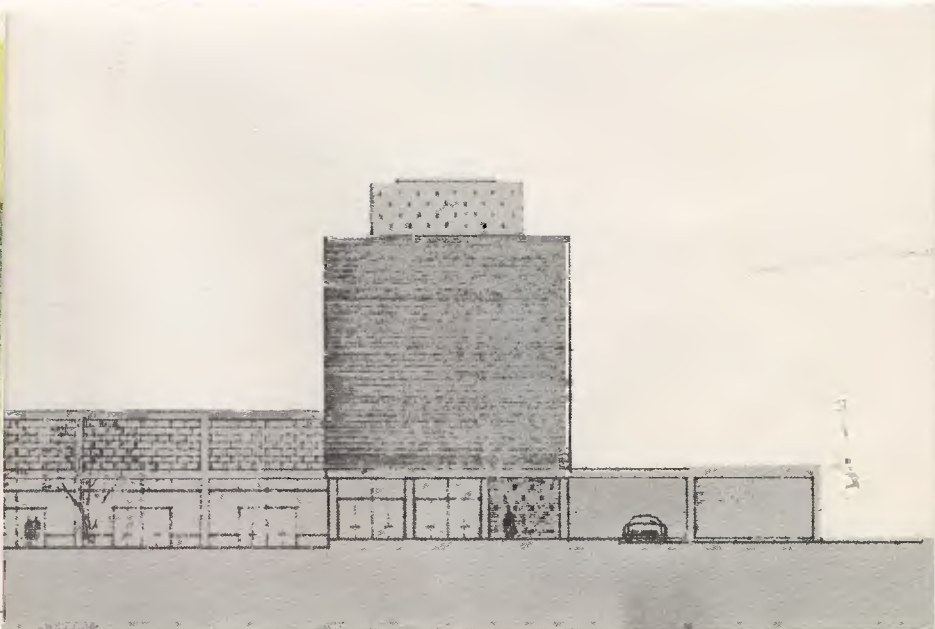
Cost of the dinner will be \$3.75 per person. Please use the enclosed form to make your reservation before Wednesday, June 4th. A postpaid reply envelope is enclosed for your convenience.

About Mr. Folsom:

Treasurer and Director of Kodak; Director, Federal Reserve Bank of New York; Member, President's Advisory Council on Economic Security, 1934-35; Member, Federal Advisory Council on Social Security, 1937-38; Division Executive, National Advisory Defense Commission, June, 1940-January, 1941; Vice-Chairman, President's Advisory Committee on Merchant Marine, 1947-48; Member, Social Security Advisory Council of United States Senate Finance Committee, 1948; Member, National Industrial Conference Board; Member, Business Advisory Council United States Department of Commerce; Director, United States Chamber of Commerce, 1942-48; Chairman, Board of Trustees, Committee for Economic Development; and Member, Committee on Mobilization Policy, National Security Relations Board.



. . . . In GEORGIA:



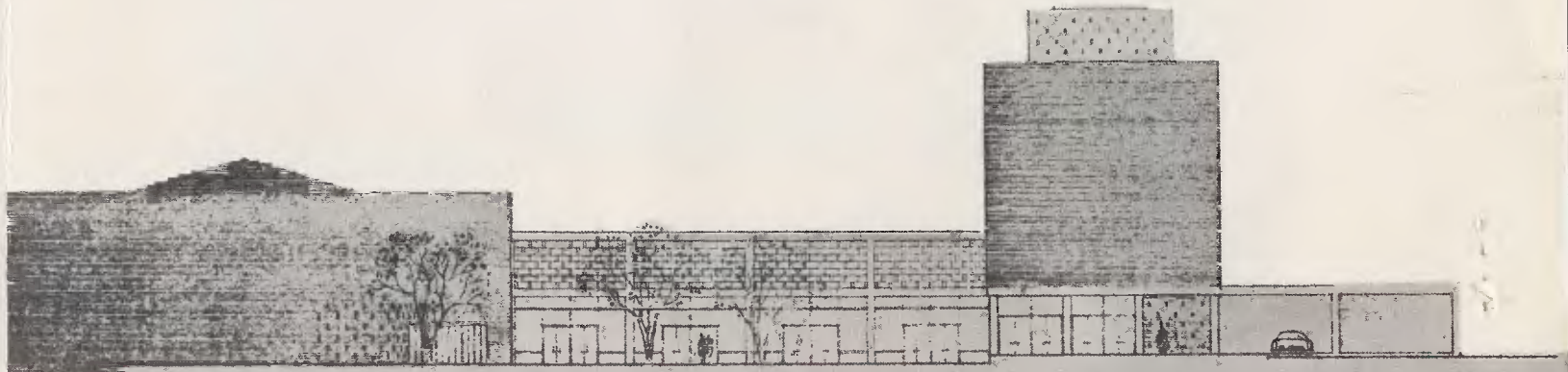
PEOPLE HELP THEMSELVES

A New Facility

- 300 Overnight Guests
 - 500 Dining Capacity
- 400 Auditorium Capacity
 - 27 Conference Rooms
 - 750 Parking Spaces
 - *Air Conditioned*

at the
University of GEORGIA
in Athens

Stevens and Wilkinson, *architects*
Lewis J. Sarvis, *consulting architect*
Thomas Church, *landscape architect*



Continuing Education:

A Story of Helping . . . PEOPLE HELP THEMSELVES

Funds Provided by
The W. K. Kellogg Foundation
And The State of Georgia
Make Possible

CONTINUING EDUCATION

A University of Georgia

PROGRAM

Involving the Use of

Television

Motion Pictures

Radio

Printed Materials

Home Study

Backed up by
Face to Face Conferences
And Aids to Community
Growth and Development

INDIVIDUALS and groups of all ages and of all educational levels are in need of wisdom and skills with which to fashion better lives. There is an awakening to the urgent need for richer, more useful lives, and there is an awakening to the belief that learning has no age limit. More men and more groups of men are seeking wisdom and the skills with which judgment, decision, and attitude may be fashioned. Individuals are seeking links with each other, with their families, and communities, and their governments and their world at large. Learning and living no longer are regarded as separate functions.

THE individual and his family, and their immediate community are key units of society. Mature, responsible groups grow from mature, responsible individuals. To encourage maturity and responsibility, we believe it becomes the duty of a publicly supported University to provide the means for continuing education among the people in its area. At such university resources, people, and problems may be brought together. Here is a source of initiative, understanding, and guidance.

ALREADY there is a framework at The University of Georgia within which specific economic and cultural problems and their solutions may be approached. There is, already, an accumulated store of information, and there is, already, research activity in various fields of interest. Here is a place where concepts of problems, the potentials of opportunity, and resources may be deepened and extended constantly. Here means may be sought and perfected to translate experience and to encourage development of intellectual and moral forces which may be brought to bear on common problems and opportunities.

OUR new facility will enable us to meet the demands for continuing education on a university-wide level. Upon the basis already provided by the state University System a program is being built. It is our belief that such a program should grow boldly out of human need, and that methods and techniques may be fashioned to the problems which confront individuals and groups. It is our objective to provide through The University of Georgia an institution where all educational resources available will be brought into the service of all the people to the end that more people may live richer, more useful lives.

Continuing Education:

A Story of Helping . . . PEOPLE HELP THEMSELVES

An INVITATION

Facilities Include
University Centers at
Rome, Waycross, Marietta,
Columbus, Gainesville
and Camp Gordon

In the Fall of 1956, the University of Georgia will open its Continuing Education Center. This new facility will enable the University to expand tremendously its already far-reaching program of continuing education.

The University of Georgia takes pleasure in extending this invitation to make use of our facilities and staff and participate in our programs. Interested groups are invited to hold their conferences, workshops, seminars and similar meetings at the University of Georgia.

We shall be glad to receive queries regardless of geographical location

Athens, Georgia, Is Just Around the Corner
By PLANE . . . TRAIN . . . BUS . . . AUTOMOBILE



GEORGIA INTERNATIONAL LIFE INSURANCE COMPANY

October, 1960

Hold

As of the end of September, 1960, we have been selling life insurance for fourteen months. The first two of these months, August and September of 1959, were months during which our field people had incomplete forms and merchandise. Essentially, then, our full time efforts with a reasonably complete portfolio of life insurance policies and the forms companion thereto commenced in October of 1959; the period from October 1, 1959 through September 30, 1960, therefore represents our first full year of operation.

The Table below is accordingly broken into two sections, the first of which is two months of preliminary activity and the last of which is the twelve months ending September 30, 1960. Business is called "submitted" when the file is complete in our Home Office in Atlanta, and ready for appraisal of the risk. For various reasons a portion of the submitted business never becomes "paid" business; notwithstanding, submitted business is an excellent yardstick of the paid business to be expected in ensuing months. Paid business is business on which the Company is responsible for the payment of policy benefits — business on which the policy owner has fully paid the required initial premium.



P R O D U C T I O N

	<u>Submitted</u>	<u>Paid</u>
<u>1959</u>		
August	\$ 226,000	\$ 30,000
September	353,000	187,000

October	558,000	215,000
November	661,000	358,000
December	449,000	661,000
<u>1960</u>		
January	1,029,000	472,000
February	1,312,000	686,000
March	1,404,000	929,000
April	1,847,000	1,293,000
May	2,110,000	1,413,000
June	2,455,000	1,775,000
July	3,136,000	2,634,000
August	4,006,000	3,137,000
September	4,297,000	3,243,000

The above Table does not include business acquired via the purchase of the Florida subsidiary nor does it include reinsurance accepted from other life insurance companies. The business listed above is that which our General Agents, and the Agents and Brokers reporting to them, have placed with our Company. As such, it becomes an index of the growth in our sales force as well as an indication of the rate at which our insurance account is increasing.



The Company is now licensed to transact business in the following territories: Alabama, Arizona, Arkansas, Florida (through subsidiary), Georgia, Maryland, Oregon, South Carolina, Texas, United Kingdom, Virginia, Washington and West Virginia. We now have representatives in nine of these thirteen jurisdictions and expect to make appointments in the remaining four before the end of the year. We hope to add several more territories in the near future.

Our Home Office staff has been strengthened by the addition of several experienced, aggressive persons and we have added six seasoned men to our production staff at detached locations to assist with the recruitment of General Agents, Agents and Brokers.

Total insurance in force (including that in the Table above and that acquired by purchase and reinsurance) is now approximately \$43,000,000. We find the results which we are reporting to you to be most encouraging; we did not expect to reach our present position this quickly. We hope that you will share our satisfaction and optimism for the future.

G. Albert Lawton
President



GEORGIA INTERNATIONAL LIFE INSURANCE COMPANY

and

FLORIDA-GEORGIA INTERNATIONAL LIFE INSURANCE COMPANY

STAFF

G. ALBERT LAWTON *
President

WYLIE CRAIG*
Vice President

JAMES C. H. ANDERSON*
Vice President

ARTHUR C. HUENERS*
Secretary-Treasurer

COL. PETER A. BLATE, USAF, RET.
Director of Military Agencies

NICHOLAS H. CARPENTER
Resident Actuary

HORACE ELLIS
Superintendent of Agencies

FRANK B. FALKSTEIN
Regional Director of Agencies

DONALD L. GOULD, C.I.U.
Regional Director of Agencies

CHARLES R. HONCE, JR.
Superintendent of Agencies

RICHARD A. HURD*
Assistant Vice President

A. C. R. C. MITCHARD
Regional Director of Agencies

EARL R. ORMSBEE, JR.**
Director of Agencies

MORTIMER R. SAMS, III *
Assistant Vice President

KEITH SKELLEY
Superintendent of Agencies

DAVID N. WAKELY, F.S.A.*
Actuary

JOSEPH A. WILBER, M.D.*
Medical Director

BOWLES, ANDREWS & TOWNE, Actuarial Consultants*
DUNCAN & COPELAND, INC., Advertising Agency*
ERNST & ERNST, Auditors*
SPALDING, SIBLEY, TROUTMAN,
MEADOW & SMITH, General Counsel*
TRUST COMPANY OF GEORGIA, Investment Counsel*

DIRECTORS

HUGHES SPALDING, Senior Partner*
Spalding, Sibley, Troutman, Meadow & Smith
G. ALBERT LAWTON, President*
Georgia International Life Insurance Company
IVAN ALLEN, JR., Vice Chairman, Board of Directors
Ivan Allen Company
JAMES C. H. ANDERSON, Vice President*
Georgia International Life Insurance Company
JOSEPH EARLE BIRNIE, President
The Bank of Georgia
JAMES V. CARMICHAEL, President
Scripto, Inc.
HARRISON CLARKE, Executive Vice President
The Johnson, Lane, Space Corporation
WYLIE CRAIG, Vice President*
Georgia International Life Insurance Company
J. M. CULPEPPER, Proprietor**
Jack Culpepper Contractor, Tallahassee
JACK F. GLENN, Assistant President
The Citizens and Southern National Bank
ARTHUR C. HUENERS, Secretary-Treasurer*
Georgia International Life Insurance Company

ALFRED W. JONES, Chairman of the Board
Sea Island Company
A. W. LEDBETTER, Chairman of the Board
Central of Georgia Railway Company
JOHN J. MCDONOUGH, President
Georgia Power Company
RICHARD H. RICH, President
Rich's, Inc.
JAMES D. ROBINSON, Jr., Chairman of the Board*
The First National Bank of Atlanta
GODFREY SMITH, President**
Capital City National Bank, Tallahassee
GEORGE P. SWIFT, President
Muscogee Manufacturing Company
THOMAS M. TILLMAN, President
The Tillman Company, Inc.
HENRY B. TOMPKINS, President
The Robinson-Humphrey Company, Inc.
FRED J. TURNER, Retired President
Southern Bell Telephone and Telegraph Co.
WILLIAM C. WARDLAW, JR., President
Wardlaw & Company

** — Florida-Georgia International Life Insurance Company only.

* — Same position, Florida-Georgia International Life Insurance Company.

Honoring

H U G H H O D G S O N

MENU

Catawba cocktail

Stemmed strawberries

Cheese Balls

Iced Fruit Bed

Ham Chutney Rounds

Borscht - Rye Melba

Prime Ribs of Beef au jus - Horseradish Sauce

Stuffed Mushroom Caps

Baked Gold Potato - Sour Cream

Avocado Fruit Toss - Celery Seed Dressing

Rolls - Butter

Piano Bombe

Beverage

IN APPRECIATION OF HUGH HODGSON

Toastmaster Alvin B. Biscoe

Grace Louis T. Griffith

Music Students Bob Edge

The University O. C. Aderhold

College of Arts and Sciences John O. Eidson

Music Faculty J. Harris Mitchell
John Anderson

The University System Harmon W. Caldwell

Caro Nome Mrs. Lamar Dodd

All Good Wishes Calvin S. Brown

Decorations - Mrs. Francis Johnstone, Mrs. John Eidson,
Mrs. Thomas Green, and Mrs. Robert Wheeler

COMMITTEE

John H. Anderson

Leighton M. Ballew

Alvin B. Biscoe

Calvin S. Brown

Lamar Dodd

John O. Eidson

Thomas F. Green

Earl McCutchen

J. Harris Mitchell

Mrs. Lester Quattlebaum

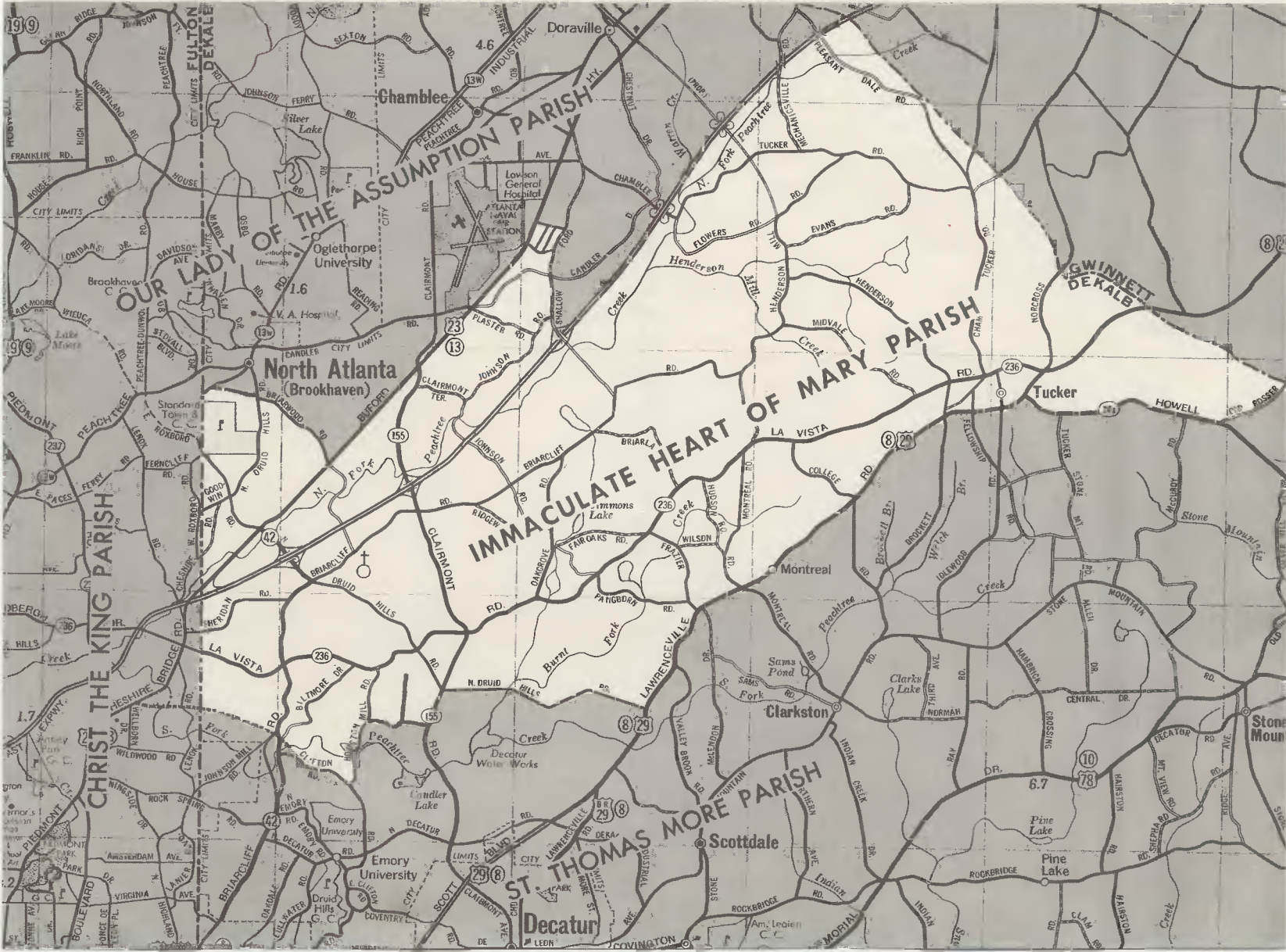
Mrs. Edith L. Stallings

Robert S. Wheeler

Louis T. Griffith, Chairman

Program by Vincent Dieball

Immaculate Heart of Mary Parish Boundaries



LEONARD HAAS AND GEORGE A. HAAS

OF THE FIRM OF

HAAS, HURT & PEEK

AND

EDWARD S. WHITE, HAMILTON DOUGLAS, JR.

ROSS ARNOLD AND LAIRD W. SHULL

OF THE FIRM OF

WHITE, DOUGLAS & ARNOLD

ANNOUNCE THE FORMATION OF A PARTNERSHIP

FOR THE GENERAL PRACTICE OF LAW

UNDER THE FIRM NAME OF

HAAS, WHITE, DOUGLAS & ARNOLD

WITH OFFICES AT

SUITE 601 HAAS-HOWELL BUILDING

ATLANTA, GEORGIA

WALNUT 1151

THE NEWMAN CLUB
AT THE
UNIVERSITY OF GEORGIA
CORDIALLY INVITES YOU TO ATTEND
THE PRESENTATION OF
THE GEORGIA CATHOLIC AWARD
BY
THE MOST REVEREND FRANCIS E. HYLAND, D.D., J.C.D.
TO
MR. HUGHES SPALDING, LL.D.
AT FOUR O'CLOCK IN THE AFTERNOON
SUNDAY, MAY FIFTEENTH, 1960

RECEPTION IMMEDIATELY
FOLLOWING THE PRESENTATION

NEWMAN HALL
1344 SOUTH LUMPKIN STREET
ATHENS, GEORGIA

*Now-You too
can have*

**Your
OWN
foundation**

for the
enduring
benefit of
mankind



METROPOLITAN FOUNDATION OF ATLANTA

a Community Trust

ROCKEFELLER AND CARNEGIE FORTUNES are scarce. Fords, Mellons and Rosenwalds entrust to their own charitable foundations sums so vast as to be beyond the grasp of most of us. There are few Stanfords to endow great universities—few, in fact, who can spare enough to create separate philanthropic enterprises.

Yet it is not only the Carnegies and Fords, the Rockefellers and Rosenwalds, the few on the pinnacle of financial success, who desire to benefit humanity and can do so in proportion to their means. Great numbers of Americans have *some* surplus, enough to establish charitable or educational funds. Many want to create useful memorials to relatives or associates. Yet it may seem difficult or impractical to do so without millions to work with.

How, then, can a person of moderate means create, from whatever resources he can spare, a fund for the enduring benefit of mankind? How can such a person, whose surplus for charity is *not* millions:

- (1) create his own Foundation,
- (2) secure the services *forever* of a financial trustee of *his own* choice,
- (3) assure for his fund the use of all community resources for intelligent philanthropic planning, and finally
- (4) have a perpetual governing board of leading citizens, serving without pay, to supervise the use of his funds, guided by his own present instructions and the needs of the future?

The answer to this question seems a large order, but it is often provided by a Community Foundation like the Metropolitan Foundation of Atlanta. Separate funds within a Community Foundation may be of any size (they vary throughout the country from the gift of a few dollars, perhaps "in lieu of flowers," to the trust fund of several millions). The founder of a fund may designate his preferred field of philanthropy, even name the agency or institution to benefit from his generosity, or he may leave complete discretion with the board which will administer his gift—the Distribution Committee of the Foundation.

Choice of financial trustee rests with the donor. You may select any one of several trust institutions in Atlanta, all of which have approved the Foundation plan and agreed to accept and manage property for it.

The name of a fund may be that of its founder or of someone else named by him. Contributions from any trust will always be made in the name chosen for it.

A life interest in a trust may be reserved to its creator or to other persons, with the income paid to them during their lives, and subsequently to charity through the Foundation.

THE DISTRIBUTION COMMITTEE is the heart of the Community Trust plan. Its function is to direct expenditures of income from each trust in accordance with the desires of the donor, or if no instructions are given, then as required by the needs of the community.

Always reserved to this Committee is the right to *act for* the creator of a trust if, in the course of time and changing conditions, his instructions have become obsolete. If, for example, the agency designated to receive income from a trust should cease to exist, the Committee has the power and duty to prevent freezing or waste of these funds, by applying them to another charitable purpose. The ten members of this Committee are appointed for six-year terms by the heads of various civic and judicial agencies and by the Trustees' Committee. (See back of cover). They serve without pay. They and their successors will conscientiously represent you in carrying out your philanthropic intentions.

YOUR OWN FOUNDATION, then, can be put under the financial management of the bank of your choice, by will or by living gift. (By the latter means you give during your lifetime and you can enjoy watching your gift at work, even guiding it if you wish.) Income from your trust will be reported periodically by your trustee bank to the Distribution Committee. Grants from this income will be ordered by the Committee in accordance with your instructions or, if you prefer to make your gift unrestricted "for the benefit of mankind," then in the light of the Committee members' wide knowledge of charitable needs in your community. The trust you create will be *your* foundation, carrying on *your* generosity, guided by the terms of *your* instructions.

More detailed information can be secured from the Executive Director of the Metropolitan Foundation of Atlanta, from any member of the Distribution Committee, or from a trust officer at any member bank in Atlanta. Your attorney has received information about the Foundation plan, and will be welcome at a conference.

DISTRIBUTION COMMITTEE

J. Pollard Turman

(Appointed by the President, Atlanta Chamber of Commerce)

John H. Boman, Jr.

(Appointed by the President of the Atlanta Bar Association)

Dr. Crawford Barnett

(Appointed by the President
of the Fulton County Medical Society)

Mrs. Albert E. Thornton

(Appointed by the Senior Judge, Superior Court
of the State of Georgia, Atlanta Judicial Circuit)

Guy Rutland, Sr.

(Appointed by the Senior Judge, Superior Court
of the State of Georgia, Stone Mountain Judicial Circuit)

James Anderson

(Appointed by the Senior Judge, Superior Court
of the State of Georgia, Cobb Judicial Circuit)

James D. Robinson, Jr.

Robert Adamson

Gordon Jones

Charles Thwaite, Jr.

(Appointed by Trustees Committee)

Harrison Jones, President

TRUSTEES COMMITTEE

James D. Robinson, Jr., Chairman

The First National Bank of Atlanta

Jack Glenn, Assistant President

The Citizens & Southern National Bank

Gordon Jones, President

The Fulton National Bank of Atlanta

Charles Thwaite, Jr., Chairman

Trust Company of Georgia

A. B. Padgett, Executive Director
METROPOLITAN FOUNDATION
OF ATLANTA
1423 Candler Bldg.
MU. 8-4117

The Old Guard



“Toujours Pret”

42nd ANNUAL REUNION
MONDAY, MAY 16, 1960
ANTOINE'S RESTAURANT
NEW ORLEANS, LOUISIANA

**ROSTER
OF
THE OLD GUARD**

Thos. C. Law, President
Joe Flaig, Vice President

R. T. Doughtie, Jr., Historian
C. E. Garner, Secretary-Treasurer

HONORARY MEMBERS

Harris Barksdale
J. E. Byram
R. E. Evans
Chris FitzSimons, Jr.
J. R. Gill
T. H. Gregory
Ray Grisham
T. J. Harrell*
Richard Haughton
Harry Hodgson
R. M. Hughes*

Ollie E. Jones
W. McD. Jones
T. S. Kenan, Jr.
W. D. Lowe
P. D. McCarley
Guy S. Meloy
Oscar Robinson
A. L. Ward
W. L. Weber
N. R. Whitney
S. W. Wilbor

H. E. Wilson

ACTIVE MEMBERS

Thos. E. Allen*
L. W. Althausser
H. S. Baker
Ben R. Barbee
P. B. Bartmess
Dupuy Bateman, Jr.
W. F. Bowld
T. F. Bridgers
J. H. Bryson
Frank B. Caldwell, Sr.
W. B. Coberly, Jr.
G. E. Covington
Harold E. Covington
Roy B. Davis*
R. T. Doughtie, Jr.
A. L. Durand
Joe Flaig
Irvin H. Fleming, Jr.
W. R. Flippin
C. E. Garner
E. A. Geoghegan

E. T. George, II
Wallace D. Griffin
C. W. Hand*
Hal Harris
H. M. Henry
James Hicky
Alfred Jenkins
Jack W. Kidd
W. H. Knapp
Thomas C. Law
P. A. Laws
E. H. Lawton
T. C. Lee
M. W. Lyons
James B. Mayer*
J. R. Mays, Jr.
Zach McClendon
Harry B. McCoy
H. L. McPherson
W. T. Melvin
A. J. Mills

John F. Moloney
F. L. Morgan
Irvin Morgan, Jr.
Robert F. Patterson
Edgar L. Pearson
George C. Perry
J. B. Perry, Jr.
A. Q. Petersen
C. T. Prindeville
E. L. Puckett*
A. K. Shaifer
Harvey Simmons
J. W. Simmons, Jr.
L. B. Stevenson
R. L. Stigler
W. G. Taylor
Louis Tobian
S. J. Vaughan, Jr.
C. W. Wallace
R. B. Williams
Henry Wunderlich

Maxwell Yerger

*Elected May 11, 1959

OLD GUARD DINNER

FRONT ANNEX ROOM—ANTOINE'S RESTAURANT
NEW ORLEANS, LOUISIANA

Cocktail Hour 7:00 P.M.

Dinner 8:00 P.M.

ECREVISSE CARDINAL

Hearts of Celery

Queen Olives

TORTUE AU SHERRY

TOURNEDOS DE BOUEF

POIS A LA FRANCAISE

POMMES DE TERRE SOUFLÉ

COEUR DE PALMIER

CERISSES JUBILÉ



Café Noir



CIGARS

CIGARETTES

Autographs



“Old wood to burn,
Old books to read,
Old wine to drink,
Old friends to trust.”

“The time has come,” the
Walrus said, “to talk of many things:
For instance . . . of Retirement!”

And soon I'll be retiring to the hills
and valleys of a peaceful countryside.

Some of my friends have asked, in a tone of misgiving,
“What on earth will you ever find to do?” My concern, oddly
enough, is that there'll not be enough hours in the day for me.

Against the constant temptation to read, to meditate, to loaf
beside the fire or out in the lazy sunshine, maybe to do a bit of
traveling, I must also find the time to record, as best I can, some
small portion of what these busy years have taught me.

“But no one may ever read it!” the cynic exclaims. True. Maybe
no one will ever view the painting of the artist, starving and
freezing in his garret. Still, he must paint, and I must write.

Here, now, is an expression of thanks for a thousand kindnesses
through these years. For counsel, friendship—even love—that
some have given me.

But, whatever else it is, it is not a dull request that you will re-
member me. Just help yourself, instead, to Rosetti's gentle option:

“And if thou wilt, remember
And if thou wilt, forget.”

Address:
(After late October, 1960)
Gordonsville, Virginia



J. Rou Gentry

STATE OF GEORGIA
CERTIFIED STATEMENT FOR ANNUAL REGISTRATION OF A CORPORATION

NAME OF CORPORATION: _____

PRESIDENT: _____ GENERAL MANAGER: _____

PRINCIPAL OFFICE: (Street and No.) _____ (City) _____ (State) _____

PRINCIPAL OFFICE IN GA.: (Street and No.) _____ (City) _____

AUTHORIZED AGENT IN GA.: IF FOREIGN _____

AGENT'S ADDRESS: IF FOREIGN (Street and No.) _____ (City) _____

NATURE OF BUSINESS: _____

WHEN INCORPORATED: (Date) _____ BEGAN DOING BUSINESS IN GEORGIA: (Date) _____

WHERE INCORPORATED: (City) _____ (County) _____ (State) _____

BY WHAT AUTHORITY INCORPORATED: _____ CAPITAL STOCK _____

(Secretary of State, Legislature, Superior Court, or other authority)

TO THE HONORABLE SECRETARY OF STATE, Atlanta, Ga.:

I HEREBY CERTIFY that the above statement, furnished the Secretary of State of Georgia for record, as required by an act of the General Assembly of Georgia, approved August 16th, 1906, is correct. Date _____ 19_____.

Signed by: _____ Title _____

(Law requires that President or General Manager must sign)

(OVER)

CORPORATION COMMISSIONER

The Secretary of State shall be ex-officio Corporation Commissioner of this State, and shall be charged with the execution of the duties hereinafter enumerated.

Returns of Corporation. It is the duty of all corporations except banks doing business in this State, whether incorporated by the Legislature of this State, by the Secretary of State, or by the judgment of the Superior Courts, or of any foreign corporation doing business in this State, to make a return, annually, through the President or General Manager on or by the first day of November.

Fees. At the time of making said return the officer making the same shall remit a fee of ONE DOLLAR for the FIRST YEAR and FIFTY CENTS annually thereafter to cover the cost of recording the return.

PENALTY FOR NON-COMPLIANCE. Upon failure and refusal of any corporation to make said return, the Company shall be liable to a penalty of FIFTY DOLLARS and the Commissioner of Corporation is authorized to issue his execution therefor, including all costs incurred: Provided the Secretary of State shall have in his discretion authority to suspend the penalty or issue of fi. fas., when he shall be convinced that there has been no bad faith in failure to comply with the requirements of this Article.

SUNDAY, DECEMBER 11, 1960

ATHENS, GEORGIA

FIRST BAPTIST CHURCH

Enter in Silence . . . Wait in Prayer . . . Worship in Reverence

MORNING WORSHIP 11:00

PRELUDE: "*Sleeper's Wake! A Voice Is Calling*" J. S. Bach

CHORAL INTROIT: "*Alleluia, Sing Praises to God*" J. S. Bach

DOXOLOGY: Followed by INVOCATION while standing

HYMN NO. 151: "*O Zion, Haste*" Tidings

SCRIPTURE: Acts 16:25-34

PRAYER

HYMN NO. 141: "*It Came Upon the Midnight Clear*" Carol

OFFERTORY: "*Aria*" Peeters

CHORAL WORSHIP: "*The Lord Is My Light*" Allitsen

SERMON: "WHAT IS SALVATION?"

HYMN NO. 37: "*There Is a Fountain*" Mason

BENEDICTION

POSTLUDE: "*Break Forth O Beautiful Heavenly Light*" J. S. Bach

EVENING WORSHIP 7:30

EAGLE AWARD PRESENTATION TO

Paul Gallis

Scout Message by the Pastor: "A True Scout"

Those who wish to unite with this church by profession of faith, by transfer of letter or by statement are invited to present themselves during the hymn of invitation. It is requested that no one leave the sanctuary during the invitation hymn.

HOWARD P. GIDDENS

Pastor

D. C. RHODEN

Minister of Music

OPPORTUNITIES FOR THE WEEK

SUNDAY, DECEMBER 11

- 9:45 Sunday School
- 4:00 Training Union Visitation
- 5:30 Student Supper
- 6:15 Training Union
- 8:30 Local Youth Fellowship
- 9:15 B.S.U. Fellowship, B.S.U. Center

MONDAY, DECEMBER 12

- 3:30 Cherub Choir Rehearsal
- 3:30 Beginner Sunbeams Meet
- 3:30 Junior G.A.'s Meet
- 4:15 Primary Sunbeams Meet
- 4:30 Beginner Music Activities
- 6:45 Crusader Choir Rehearsal
- 7:30-9:00 Deacons School

TUESDAY, DECEMBER 13

- 7:30 Boy Scout Troop 22 Meets
- 7:30-9:00 Deacons School

WEDNESDAY, DECEMBER 14

- 5:30 Youth Choir Rehearsal
- 6:30 Family Night Supper
- 7:00 Prayer Meeting
- 7:30-9:00 Deacons School
- 8:00 Chancel Choir Rehearsal
- 8:00 Church Council

THURSDAY, DECEMBER 15

- 4:00 Carol Choir Rehearsal
- 7:00 Kindergarten Christmas Program
- 7:30-9:00 Deacons School

FRIDAY, DECEMBER 16

- 7:30 Boy Scout Christmas Party

SATURDAY, DECEMBER 17

- 7:30 Junior II Sunday School Christmas Party

* * *

The flowers on the altar today are given by Mr. Harry Hodgson, Sr. to the glory of God and in loving memory of his wife.

Copies of **THE FIRST BAPTIST CHURCH NEWS** are available in the vestibule. The **NURSERY** is open Sunday from 9:30 a.m. to 12:15 p.m. and 6:45 to 9:15 p.m.

A decorative border with a repeating floral and vine pattern surrounds the entire text area. The border is composed of two parallel lines with intricate scrollwork and leaf motifs between them.

HODGSON'S, INC.

ATHENS, GEORGIA

\$500.00

**5% SINKING FUND
DEBENTURES**

(SUBORDINATED)

UNITED STATES OF AMERICA

NUMBER

STATE OF GEORGIA

DOLLARS

500.00



SERIES

B

HODGSON'S, INC.

5% SINKING FUND DEBENTURES

(Subordinated)

HODGSON'S, INC., a corporation of the State of Georgia (hereinafter called the Company) acknowledges itself indebted to, and for value received hereby promises to pay to the bearer at the office of the Company in the City of Athens, Georgia, on the 1st day of September, 1975, the principal sum of \$500.00 in lawful money, to pay interest thereon from the 1st day of June, 1945, until the Company's obligation with respect to the payment of such principal shall have been discharged, at the rate of 5% per annum, payable on the 1st day of September in each year upon presentation, and quarterly thereafter.

This Debenture is one of a series of Debentures aggregating \$200,000.00 issued by the Company, known as its Series B Sinking Fund Debentures, (Subordinated) issued under an Indenture dated as of the 1st day of June, 1945, between the Company and The Citizens and Southern National Bank at Athens, Georgia, (hereinafter called the Trustee), to which Indenture and all Indentures supplemental thereto reference is made for a more particular statement of the rights, powers and privileges of the holder of this Debenture and the rights, obligations and duties of the Company.

This Indenture may be registered as to principal and interest at the option of the holder upon presentation thereof to the office of the Trustee in Athens, Georgia.

The holders of not less than 66% of the principal amount of these Debentures at the time outstanding, may consent on behalf of the holders of all such Debentures to the postponement of any interest payment for a period not exceeding three years from its due date as provided for in the Indenture under which this Debenture is issued.

The Company shall on or before the 1st day of August of each year beginning the 1st day of August, 1946, deposit with the Trustee in a sinking fund the sum of \$10,000.00 in money and/or in the par value of these Debentures; and in addition thereto shall deposit 25% of the net earnings of the corporation in excess of \$25,000.00 as shown by the audit covering the immediately preceding year's operation. The Trustee shall use the moneys in said sinking fund from time to time for the purchase of these Debentures on the open market, if they can be purchased at a price not exceeding the call price thereof, and if not, then the Trustee shall from time to time call a sufficiency of these Debentures to consume the moneys remaining in said sinking fund.

The Indenture contains provisions permitting the Company and the Trustee with the consent of the holders of not less than 66% in aggregate principal amount of the Debentures at the time outstanding, evidence as in the Indenture provided, to execute Supplemental Indentures, adding any provisions to, or changing in any manner, or eliminating any of the provisions of the Indenture or of any Supplemental Indenture, or modifying in any manner the rights of the holders of the Debentures and coupons; provided, however, that no such Supplemental Indenture shall:

- (1) extend the fixed maturity of any Debentures, or reduce the rate, or extend the time of payment of interest thereon, (except as provided in the Indenture) or reduce the principal amount thereof without the consent of the holder of each Debenture so affected, or
- (2) reduce the aforesaid percentage of Debentures, the holders of which are required to consent to any such Supplemental Indenture without the consent of holders of all Debentures then outstanding.

Any such consent either as to the postponement of any interest payment or the execution of Supplemental Indentures, by the holder of this Debenture (unless effectively revoked as provided in the Indenture) shall be conclusive and binding upon such holder and upon all future holders and owners of this Debenture, irrespective of whether or not any notation of such consents are made upon this Debenture.

These Debentures may be called at any time and from time to time, in whole or in part, at the option of the Company, or by the Trustee for sinking fund purposes, at par plus all accrued and unpaid interest, by publishing notice of such redemption once a week for four weeks in one daily newspaper of general circulation in the City of Athens, Georgia, the first publication to be at least 30 days and not more than 45 days prior to the date of redemption, as provided in the Indenture under which the same are issued. If less than all are called, the Debentures so called shall be selected by lot.

These Debentures are subordinated to the indebtedness of the Company incurred in the ordinary course of business not to exceed \$500,000.00 and to \$73,100.00 Series A Debentures. The Company shall pay no dividends on any of its stock until the total amount of the Debentures outstanding have been reduced to \$200,000.00 or less; unless the sinking fund provisions have been fully complied with; unless the Company's quick assets amount to \$200,000.00 or more after said dividend is paid, which dividend will be in excess of 25% of the net earnings of the corporation for the preceding year.

In Witness Whereof, HODGSON'S, Inc., has caused this Debenture to be signed by its President, and its corporate seal to be affixed and attested by its Secretary.

HODGSON'S, INC.

(SEAL)

Attest:

By

Secretary

President

Artists Associates

Inc.

*cordially invites you
to attend
the
opening reception
of their
unique gallery
of paintings*

April 16, 1961

Reception 2:00 p.m. to 6:00 p.m.

935 West Peachtree Street, N. E.

Atlanta, Georgia

Featuring

*the works of the
following
well-known
Georgia artists*

Ouida Canaday

Paul Chelko

David Cogland

Tom Dewberry

Marjorie Elder

Walter Greer

K. Pass

Keenan Shute

Ben Shute

Vivian Steinberg

Tito

James Pace

Pat Herrington

Bill Grey

Joe McKibben


Frances Piel

Rhea Montag

Kathryn Burke

Robert Gillespie

Jack Brock




THE CLOISTER

Sea Island
GEORGIA

RATES, FACILITIES AND
OTHER INFORMATION

EFFECTIVE
SEPTEMBER 1, 1961
OPEN ALL YEAR



AMERICAN PLAN RATES - - PER DAY

Effective September 1, 1961

Subject to 3% Georgia Sales Tax . . . and to change without notice

CAREFULLY CHOSEN CLIENTELE -- REFERENCES REQUESTED

No. Avail.	Type Room		June 1 - Aug. 31		Sept. 1 - Jan. 31		Feb. 1 - May 31	
			Two Persons	One Person	Two Persons	One Person	Two Persons	One Person
8	5A	}	47	xx	50	xx	58	xx
10	4A		42	xx	44	xx	50	xx
38	AAA		40	xx	42	xx	48	xx
30	AA	}	36	26	38	28	45	xx
35	A		34	24	36	26	43	xx
33	B		32	22	34	24	41	29
13	C		30	20	32	22	38	26
THIRD PERSON in room add				11		12		14

10% discount on stays of one month or longer, except during March and April.

Difference in room rate is due to location and size. All rooms have twin beds and private bath, are well furnished and comfortable. 5A rooms have bed areas separated from living room; also dressing room. Most AAA rooms in hotel have enclosed Lanai type living room.

SUITE RATE for two persons—Total of one person rates for rooms occupied. Where xx shows on rate schedule, the one person rate is the two person rate less meal allowance.

AIR-CONDITIONING—All guest rooms are air-conditioned during season (from approximately May 1st to October 15th.) The Cloister dining rooms, club rooms and lounges are air-conditioned.

CHILDREN'S RATES (when occupying room with adult)—13 years of age and over, regular 3rd person rate. 6 years of age through 12, \$8.00 per day. 3 through 5 years, \$6.00 per day. 2 years and under, \$4.00 per day. Any child occupying a separate room will be charged the regular adult rate in effect.

Year round meal rates for Transients or Cottagers: Breakfast, \$1.75; Luncheon, \$3.00; Dinner, \$5.50.

Limited accommodations in service dormitories for white maids and chauffeurs — \$8 daily American Plan. Permission cannot be granted to keep dogs or other pets in guest rooms.

CONCERNING RESERVATIONS

Last minute changes due to emergencies are understandable, but those due to simple uncertainty cause great hardship in these days of costly operations and capacity bookings. Please notify us well in advance of any necessary change in your reservation.

HOW TO REACH SEA ISLAND

BY RAIL . . . From the West via Southern Railroad to Brunswick, Georgia. From North or South via Seaboard to Thalmann, Georgia, 30 miles away or via the Atlantic Coast Line to Nahunta, 50 miles distant. Guests are met at train by car when The Cloister is notified in advance. There is a reasonable charge for this service.

BY AIR . . . Via Delta and Eastern Airlines to Brunswick, Georgia. Airport located on St. Simons Island 3 miles from Sea Island. Also, non stop air service to Jacksonville and connecting local service to St. Simons. Consult local air lines office for schedules and routings.

BY MOTOR . . . From North and South via U. S. Highway No. 17, from West U. S. Highways No. 341 or 84. Sea Island is half-way between Savannah, Georgia, and Jacksonville, Florida. Enter paved causeway, off Route 17, at Brunswick, Georgia—10 miles from Sea Island.

COTTAGE RENTALS

Of the more than 160 privately owned houses in the Sea Island residence colony approximately one-half are available for rental when not occupied by owner. These are completely furnished two to five bedroom houses. Rental rates, \$600 to \$1500 per month. All Cloister facilities available to cottagers. Address Cloister Manager, advising period of rental and size house desired.

HOW TO SEND BAGGAGE

Address all baggage to The Cloister, Sea Island, Georgia, as follows:

- 1) Express baggage should be sent to The Cloister via Brunswick, Georgia. Allow one week enroute.
- 2) If checked on Atlantic Coast Line or Southern, buy ticket to Brunswick, Georgia.
- 3) If checked on Seaboard Railroad, buy additional ticket from Everett City, Georgia, to Brunswick, Georgia, on Southern Railroad.

Send your baggage checks, registered mail, to Manager's Office at The Cloister, so the Transportation Department may have your baggage here on your arrival.

RATES FOR SPORTS FACILITIES

GOLF CLUB

- GREENS FEES**— **Daily**—(February through May)
18 holes \$5.00; 9 holes \$3.50.
(June through January)
18 holes \$4.00; 9 holes \$3.00.
- Monthly**—(February through May)
First member of family \$75;
Second \$50; Third \$25.
(June through January)
First member of family \$60;
Second \$40; Third \$20.

Above Greens Fees are for Cloister Hotel Guests and Sea Island Cottagers. Other golfers pay slightly higher Greens Fees.

- CADDIES FEES**—9 holes single, \$2.00; double, \$1.50 per bag; 18 holes single, \$3.00; double, \$2.50 per bag.
- INSTRUCTION**—Individual, \$5.00 per half hour.
- GOLF CART RENTAL**—\$7.00 for 18 holes; \$4.00 for 9 holes.
- DRIVING RANGE FEES**—Small bucket of balls, 50c; large bucket of balls, \$1.00.
- CLUB CLEANING — STORAGE** — \$1.50 a week; \$3.00 a month.

BEACH CLUB

- FRESH WATER SWIMMING POOL**—Heated during winter months. Gratis to Cloister guests.
- LOCKERS**—Charge for locker and towels, 50c per day, \$2.50 per week, \$7.50 per month. Cloister guests who dress in rooms are requested to use Hotel bathers' entrance.

GUN CLUB

- SKEET SHOOTING**—\$3.75 per round, including shells, \$2.00 per round, targets only. Expert instruction, \$3.00 per half hour. Guns available for use. Clubhouse and fields are open all day except Monday and Sunday mornings—February 1st through May 31st, June 1st through January 31st, by appointment.
- HUNTING** — Controlled Shooting Areas. (Inquire for Hunting brochure).

FISHING

- CLOISTER DOCK**—Opposite Cloister motor entrance. Facilities for inshore salt water fishing: Trout, whiting, drum, bass, croaker and sheepshead.
- INSIDE WATERS FISHING**—145 H. P. Cruiser—All year from Cloister Dock. Half day (5 hours) 1 or 2 persons, \$26; additional passengers, \$6 each. Full day 1 or 2 passengers, \$40; additional passengers \$7.50 each. Tackle and bait furnished.
- DEEP SEA FISHING** — Charter boats available during June, July and August—1 to 4 persons, \$50; 6 persons, \$60. Tackle and bait furnished.

RIDING STABLES

EXCELLENT SADDLE HORSES—

1 hour, or less	\$ 3.00
Second hour	2.00
Picnic Rides (4-hr. maximum)	6.00

INSTRUCTION—\$6.00 per hour (includes patron's and instructor's horse). Six one-hour lessons \$30.00.

GROOM'S SERVICES—Cost of extra horse only.

TENNIS

Court Fees, \$1.00 an hour per person. Instruction or playing partner \$5.00 per half hour. Rackets, balls, clothing and supplies available. Re-string and repair service.

CYCLING

Bicycles, \$1.00 per half day; \$1.50 per day; \$7.50 per week. Tandem bicycles \$1.75 per half day, \$2.50 per day .

SEA ISLAND PRIVATE SCHOOL

Operated only during the second semester of the school year (January through April) for children 6 through 14 years of age, with instruction from 1st through 8th grades. Entrance may be made for any period of time, with child's own home school work carried on.

During the first semester (September through December) tutoring at the Sea Island School House may be arranged through the Headmistress of the school.

TUITION—Second Semester (3½ months) \$150 - \$165, Month \$50 - \$55, Week \$14 - \$16, Day \$5. Slightly lower rates for first grade with morning classes only. Rates for tutoring services on request.

CLOISTER GARAGE

U-DRIVE-CARS available at the Cloister Garage, which is affiliated with National Car Rental Service. Latest model cars may be secured either through the National agency at Jacksonville Air Terminal or the Cloister Garage.

CHAUFFEURED CARS—\$5.00 per hour. Waiting charge \$2.50 per hour. Chauffeur for driving privately owned cars \$2.00 per hour.

STORAGE—\$1.25 per day; \$7.50 per week; \$22.50 per month.

WASH, GREASE and REPAIR SERVICE—Current prices.

TRANSPORTATION RATES TO RAILWAY STATIONS:

Brunswick (Southern RR) 12 miles—\$4.00 for 1 or 2 persons. Each additional person \$1.75.

Thalmann (Seaboard RR) 30 miles—\$10.00 for 1 or 2 persons. Each additional person \$5.00.

Nahunta (A. C. L. RR) 50 miles—\$14.00 for 1 or 2 persons. Each additional person \$5.00.

Waycross (A. C. L. RR from West) 75 miles—\$25.00 for 1 or 2 persons. Each additional person \$5.00.

To Airports—(Rates for Cloister guests):

St. Simons—\$1.50 for one person. \$1.00 each additional person.

Savannah Airport—\$30.00 for 1 or 2 persons, downtown \$35.00. Each additional person \$5.00.

Jacksonville Airport—\$30.00 for 1 or 2 persons, downtown, \$35.00. Each additional person \$5.00.

WHAT TO WEAR

FOR THE LADIES

Sea Island, a year-round resort, is the perfect setting for classic country clothes. For daytime use, lightweight and light colored, woolen suits and dresses (December through April) and casual cottons almost all year. Bermuda shorts and socks are often worn in the daytime during the spring and summer seasons. Hats and gloves are seldom seen at Sea Island.

SPORTS . . . Tennis dresses, or shorts, and tennis shoes for Sea Island's Teniko courts. Golf dresses or Bermuda shorts are worn on the golf course. Wool skirts, cashmere sweaters and light weight toppers are seen November through March. The Stables are open the year-round, so bring your lightweight riding clothes. Bathing suits and beach coats are suggested for Beach Club wear. No brief shorts or bathing suits are worn in the lobby, clubrooms or public rooms of The Cloister. A bather's entrance is provided for guests' use.

FOR THE MEN

At breakfast or luncheon sport or casual jackets are customary in the dining room. Gentlemen are required to wear coats in the dining room and clubrooms with ties at night. From December through March windbreakers are often needed on the golf course. From April through October lightweight sport coats, sweaters, slacks or Bermuda shorts and socks are worn during the day time. You will need a beach jacket when at the Beach Club. Don't forget your golf clubs, riding clothes, fishing equipment and guns for skeet shooting.

EVENING WEAR

"Dressing" at The Cloister is optional throughout the year; however, there are certain nights when the majority enjoy black tie and cocktail or dinner dresses—Saturday nights, Thursday nights, and on nights of Alfresco dinners. During the months of February, March, and April a goodly percentage of guests "dress" nightly (except Sunday.)

Gala Birthday Celebration

Honoring

The President of the United States

Saturday, May 27, 1961

National Guard Armory, Washington, D. C.

We hope you will join with Democrats, their friends and loyal supporters throughout the nation in saying to President Kennedy on the occasion of his 44th Birthday that the Democratic Party is once again solvent.

Your presence, along with thousands of others, will be a genuine tribute to our President—and assure him and the Democratic Majority in Congress that the Democratic Party is proud of the Administration.

Your presence will also be a guarantee of continued support of our Party.

Enclosed is a Dinner Reservation Card. John M. Bailey, Chairman, and Matthew H. McCloskey, Treasurer, of the Democratic National Committee, join with us in urging you to fill in this card and return it promptly. Tables seat ten and we hope you and your friends will join in filling one or more tables.

We look forward to seeing you on this GREAT occasion!

Ralph W. Gardner

Chairman



GEORGIA INTERNATIONAL LIFE INSURANCE COMPANY

The Annual Meeting of Stockholders of GEORGIA INTERNATIONAL LIFE INSURANCE COMPANY will be held on the 15th day of March, 1961, at ten o'clock A. M., in the Directors' Meeting Room of the Citizens and Southern National Bank, corner of Marietta and Broad Streets, Atlanta, Georgia, for the purpose of receiving the President's Annual Report, to elect Directors, and to transact other business that may properly come before the meeting.

Notice is also hereby given of a proposed Charter amendment to be acted on at the Annual Meeting. The new Georgia Insurance Code, which was passed by the General Assembly in 1960 and became effective on January 1, 1961, permits a Georgia insurance company to have outstanding common stock with a par value of \$1.00 per share. Prior to the new Code the minimum was \$2.50, which is the present par value of the Company's stock. Pursuant to the provisions of the new Code, the Directors of the Company, at their January meeting, proposed and unanimously recommended that the stockholders amend the Company's charter by reducing the par value of the authorized capital stock of the Company from \$2.50 to \$1.00 per share. The effect of this action will be to transfer \$2,670,000 from the Company's capital account to its surplus account, leaving the Company's capital at \$1,780,000.

You are urged to sign and return promptly the proxy statement on the enclosed card, regardless of whether or not you plan to attend the meeting. Your attendance at the meeting will automatically revoke the proxy.

Yours very truly,

Arthur C. Hueners

Arthur C. Hueners
Secretary-Treasurer

February 16, 1961



**The Annual LAW DAY
SCHOOL OF LAW
The University of GEORGIA**

May 5, 1962

PROGRAM

- 9:30 A.M. REGISTRATION, Rotunda, Law Building
COFFEE HOUR, Reading Room, Law Library
- 11:30 A.M. THE UNIVERSITY CHAPEL
Presiding, Donald B. Howe, Jr.
President, Law Student Advisory Council
Organ Prelude by Bach
Invocation: Rev. J. Earl Gilbreath
Emmanuel Episcopal Church
Welcome to the University:
Dr. O. C. Aderhold, President,
The University of Georgia
Welcome to Law Day:
J. Alton Hosch, Dean
School of Law,
The University of Georgia
Presentation of Student Awards
Introduction of Speaker: Donald B.
Howe, Jr.
Address: Honorable J. Strom
Thurmond, United States Senator
from South Carolina
Alma Mater: Audience
Benediction: Rev. J. Earl Gilbreath
Organ Postlude by Mendelssohn
Organist . . . Miss Nolee May
Dunaway

1:00 P.M. LUNCHEON, The Georgia Center for Continuing Education Main Dining Room

Presiding: Harry S. Baxter, Attorney at Law, Atlanta, and President, The University of Georgia Law School Association

Remarks: Howell C. Erwin, Jr., Attorney at Law, Athens, Georgia

Presentation of Scroll to member of family of the late Honorable Paul Brown, Elberton, Georgia, distinguished lawyer, Member of Congress, and loyal friend of the School of Law and The University of Georgia.

Remarks: A. O. B. Sparks, Attorney at Law, Macon, Georgia

Presentation of Scroll to William King Meadow, Atlanta, distinguished lawyer, and loyal friend of the School of Law and The University of Georgia.

5/5 X
3:30 P.M. SCHOOL OF LAW COURT ROOM Student Moot Court Competition Final Argument

THE COURT:

Honorable T. Grady Head, Presiding Justice, Supreme Court of Georgia

Honorable Homer C. Eberhardt, Judge, Court of Appeals of Georgia

Honorable Robert L. Russell, Judge, Court of Appeals of Georgia

ALMA MATER

(By J. B. Wright, Jr., '12)

From the hills of Georgia's northland
Beams thy noble brow,
And the sons of Georgia rising
Pledge with sacred vow.

CHORUS:

Alma Mater, thee we'll honor,
True and loyal be,
Ever crowned with praise and glory,
Georgia, hail to thee.

'Neath the pine trees' stately shadow
Spread thy riches rare,
And thy sons, dear Alma Mater,
Will thy treasures share.

Through the ages, Alma Mater,
Men will look to thee;
Thou the fairest of the Southland,
Georgia's Varsity.

LAW DAY PLANNING GROUPS

Law Student Advisory Council

University of Georgia Law School Association

Law Faculty Committee

Institute of Law and Government Committee

The School of Law and the Institute of Law and Government

We again welcome you on this Annual Law Day to the School of Law and to the Institute of Law and Government. For over a century, The University of Georgia School of Law has been of service to the State in training its students for the legal profession. Its alumni have through the years rendered distinguished service to Georgia and to the Nation. We are pleased with these notable achievements and we also realize that the Law School must continue to do its part in training future members of the profession to meet the increasingly complicated demands of society upon law and its institutions. Through the Institute of Law and Government which operates as an integral part of the School of Law, we provide continuing legal education for members of the bar and Georgia public officials. The Institute also engages in research looking toward the improvement of the law and the effective administration of justice by Georgia public officials. Through the loyal support of alumni and friends, the State Government, the organized bar, and other agencies we believe the Law School and Institute will continue to make a valuable contribution to the people of Georgia. Every year we look forward with pleasure to the return of our alumni and friends to the University campus. We feel you enjoy the relationship with one another and that you will derive both pleasure and benefit from renewing your association with the Law School and the Institute, and meeting the present student body and faculty.

J. Alton Hosch,
Dean of the School of Law



NUMBER
2773

SHARES
20

INCORPORATED UNDER THE LAWS OF THE STATE OF GEORGIA

THE ATLANTA TIMES, INC.

COMMON STOCK

THIS CERTIFIES THAT

WILLIAM E. CADLE
126 SO. MAIN
SWAINSBORO, GEORGIA

is the owner of

COUNTERSIGNED
BY *Galina S. Stepan*
REGISTRAR

TWENTY

shares of

the common stock of THE ATLANTA TIMES, INC. having a par value of one dollar per share fully paid and non-assessable, transferable only on the books of the Corporation upon surrender of this certificate properly endorsed.

WITNESS the facsimile seal of the Corporation and the facsimile signatures of the President and Secretary of the Corporation.

Dated AUGUST 3, 1962

THIS CERTIFICATE IS NOT VALID UNTIL
COUNTERSIGNED BY THE REGISTRAR

Walter T. Austin
SECRETARY



W. E. Cadle
PRESIDENT

For value Received, _____ hereby sell, assign, and transfer unto

_____ Shares
of the Common Stock, represented by the within Certificate,
and do hereby irrevocably constitute and appoint

_____ Attorney
to transfer the said stock on the Books of the within named
Corporation with full power of substitution in the premises.

Dated _____ 19____

In Presence of _____

NOTICE - THE SIGNATURE OF THIS ASSIGNMENT MUST CORRESPOND WITH THE NAME AS WRITTEN UPON THE
FACE OF THIS CERTIFICATE IN EVERY PARTICULAR, WITHOUT ALTERATION OR ENLARGEMENT, OR ANY CHANGE WHATSOEVER

Special Collections Libraries
University of Georgia
Athens, Georgia 30602

Please Retain This Portion

RECEIPT

THE ATLANTA TIMES, Inc.
P. O. Box 5298, Station "E"
ATLANTA, GEORGIA 30307

I have this date _____
entered my subscription for

	3 Mo.	6 Mo.	1 Yr.
DAILY	\$3.90 <input type="checkbox"/>	\$ 7.80 <input type="checkbox"/>	\$15.60 <input type="checkbox"/>
SUNDAY	\$1.95 <input type="checkbox"/>	\$ 3.90 <input type="checkbox"/>	\$ 7.80 <input type="checkbox"/>
DAILY & SUN.	\$5.85 <input type="checkbox"/>	\$11.70 <input type="checkbox"/>	\$23.40 <input type="checkbox"/>

Paid By

Check No. _____

Money Order

The Atlanta Times

CHARTER SUBSCRIPTION

I want to be a Charter Subscriber to the ATLANTA TIMES. Please record my subscription at once.

I enclose herewith check (or money order) for \$_____.

Name _____

Address _____

(Street or P. O. Box)

(City)

(State)

(Zip Code)

	3 Mo.	6 Mo.	1 Yr.
DAILY	\$3.90 <input type="checkbox"/>	\$ 7.80 <input type="checkbox"/>	\$15.60 <input type="checkbox"/>
SUNDAY	\$1.95 <input type="checkbox"/>	\$ 3.90 <input type="checkbox"/>	\$ 7.80 <input type="checkbox"/>
DAILY & SUN.	\$5.85 <input type="checkbox"/>	\$11.70 <input type="checkbox"/>	\$23.40 <input type="checkbox"/>

All subscription payments will be held in escrow until THE TIMES is in publication, and your subscription started.

THE ATLANTA TIMES



GEORGIA INTERNATIONAL LIFE INSURANCE COMPANY

The Annual Meeting of Stockholders of **GEORGIA INTERNATIONAL LIFE INSURANCE COMPANY** will be held on the 21st day of March, 1962, at ten o'clock A.M., in the Directors' Meeting Room of the First National Bank of Atlanta, corner of Marietta and Whitehall Streets, Atlanta, Georgia, for the purpose of receiving the President's Annual Report, to elect Directors, and to transact other business that may properly come before the meeting.

You are urged to sign and return promptly the proxy statement on the enclosed card, whether or not you plan to attend the meeting. Your attendance at the meeting will automatically revoke the proxy.

Yours very truly,

Arthur C. Hueners
Secretary-Treasurer

February 12, 1962



GEORGIA INTERNATIONAL LIFE INSURANCE COMPANY

To All Stockholders

You recently received notice of your Company's Annual Meeting to be held on March 21, 1962, together with a proxy for that meeting.

Following mailing of the notice, the Company received an offer from two large institutional investors to purchase 100,000 shares of the authorized but unissued common stock of the Company at \$10 per share net to the Company. The purchase would be for investment and not for resale.

Your Directors have approved the acceptance of this offer and it is the purpose of this notice to advise you that the offer will be considered at the Annual Meeting on March 21, 1962 at 10:00 A.M. in the Directors Meeting Room of The First National Bank of Atlanta, Marietta and Peachtree Streets, Atlanta, Georgia, along with the election of Directors, the President's Annual Report, and such other business as may come before the meeting.

It is extremely important that the enclosed proxy form be executed and returned promptly regardless of whether you returned the proxy previously sent you, and regardless of whether you plan to attend the meeting. Your attendance at the meeting will automatically revoke the proxy.

It is the intention of the persons named in the enclosed proxy form to vote all proxies in favor of the acceptance of the offer referred to above.

Yours very truly,



Arthur C. Hueners

Secretary-Treasurer

February 28, 1962

OFFICERS

- M. B. SELTZER
PRESIDENT
- PETER J. STELLING
VICE-PRESIDENT
- MRS. VERNON WHITE
VICE-PRESIDENT
- ROBERT H. FERST
SECRETARY AND TREASURER
- ERIC MATTSON
PRODUCER-DIRECTOR
- CHRISTOPHER B. MANOS
EXECUTIVE PRODUCER

TRINITY 5-8338

THEATER UNDER THE STARS

(MUNICIPAL THEATER, INC.)
 GEORGIAN TERRACE HOTEL
 659 Peachtree Street, N. E.
 ATLANTA, GA.

JOHN WARD
 PUBLICITY AND ADVERTISING



DOLORES GRAY
"CAN CAN"

Dear Theater-Goer :

Our stars and shows have been selected for 1962. We feel they will make our 10th Anniversary season a memorable occasion.



GIORGIO TOZZI
"FANNY"



I would like to point out what I feel are the benefits in buying SEASON TICKETS. First of all, you are assured the same seat on the same night for all six shows. If for some reason you can't come on your chosen night, we make every effort to exchange your tickets for comparable seats on the night you can come. Also, there is a 17% discount for the purchase of season tickets. We feel this makes, Theater-Under-The-Stars the best entertainment dollar buy in the city of Atlanta, and within the financial reach of anyone wishing to take their family out for an evening. After you purchase the season tickets, if you like them they are automatically yours, year-in and year-out.



BARBARA COOK
"FANNY"



I am stressing the point of season tickets because last year close to 30,000 people came to see the "King and I", starring Blanche Thebom. Not only were a great many people unable to get choice seats, but hundreds were unable to get any seats at all! We figure that with our selections this season, we will have several of the six shows sold out in advance.



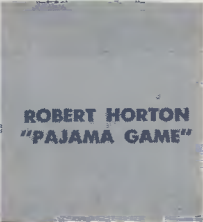
DOROTHY COLLINS
"BRIGADOON"



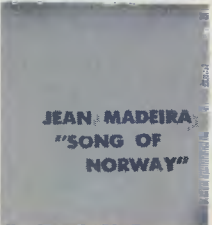
On the back page is a diagram of the Theater, with season ticket prices, and an order blank for your convenience.



ROBERT HORTON
"PAJAMA GAME"



Get season tickets for the 1962, 10TH ANNIVERSARY season now, while choice seats are available.



JEAN MADEIRA
"SONG OF NORWAY"



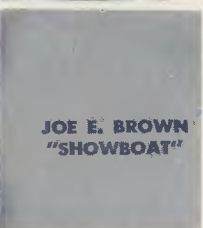
Please feel free to call on me for any information.

Sincerely yours,

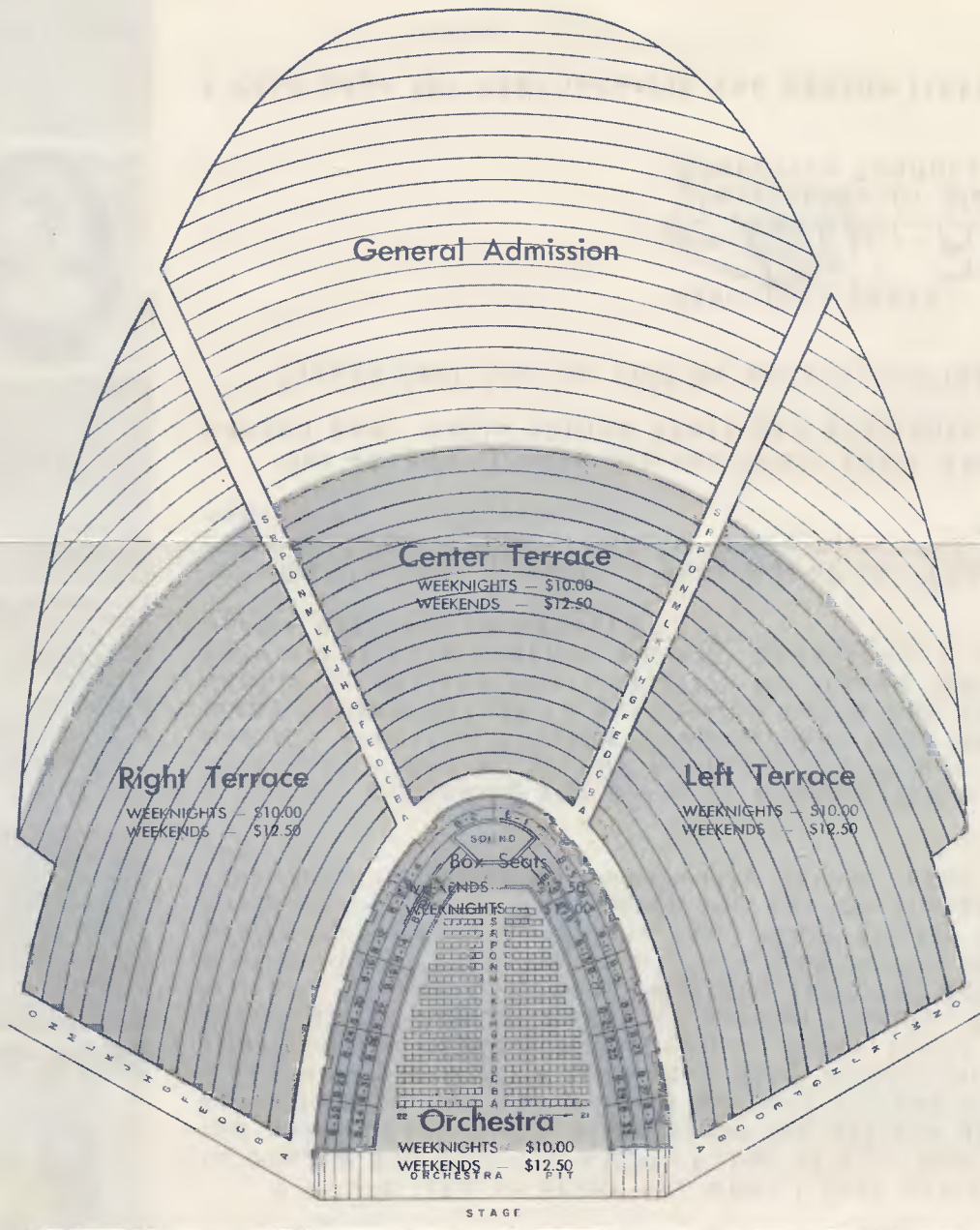
Christopher B. Manos
 Christopher B. Manos
 Executive Producer



JOE E. BROWN
"SHOWBOAT"



(Turn page for seat location and season ticket prices)



ALL PRICES ARE SEASON TICKET PRICES — SIX SHOWS FOR THE PRICE OF FIVE

Season Begins July 10

For Information — Call TR. 5-8338
or come in Person to Georgian
Terrace Hotel — 659 Peachtree St.

*Season Ticket Offer
Ends June 15th*

Theater Under The Stars

659 Peachtree Street Atlanta, Georgia

Enclosed is check or money order for
Theater Under the Stars season tickets.

Please Add 3% Ga. Sales Tax

Section	Number of Seats	Night
1st Row Choice	_____	2nd Row Choice _____
Name	_____	
Address	_____	
City	_____	State _____

*The Georgetown University Alumni Club
of Georgia
requests the pleasure of your company
at a cocktail hour and dinner
in honor of
The Very Reverend Edward B. Bunn, S.J.
President of Georgetown University
on the occasion of the 175th Anniversary
of the University
Piedmont Driving Club
Monday, April 13, 1964
7:00 p.m.*

Please Reply

*\$6.00 per person
(cocktails not included)*

Ladies Invited

AGNES SCOTT COLLEGE - DECATUR, GEORGIA



THE DEPARTMENT OF ART *presents*

LAMAR DODD

PAINTINGS ON EXHIBIT — APRIL 9 - 30, 1967

Hours: Weekdays 9-5 and 7-10 p.m. Saturday and Sunday 2-5 p.m.

Catalog of Exhibition

- | | | | |
|-------------------------|------|--------------------------------|------|
| 1. NATURE | 1966 | 15. 8 TUBAS | 1965 |
| 2. ARRANGEMENT | 1966 | 16. ITALIAN SUNLIGHT | 1957 |
| 3. LANDSCAPE | 1966 | 17. GRAND CANAL REFLECTIONS #2 | 1961 |
| 4. THE OPENING | 1966 | 18. BEFORE THE BLAST-OFF | 1963 |
| 5. STUDY | 1966 | 19. GOTHIC | 1967 |
| 6. HORIZONTAL | 1965 | 20. ABOVE THE HORIZON #1 | 1966 |
| 7. THE CLIFF | 1965 | 21. ABOVE THE HORIZON #2 | 1966 |
| 8. FIGURES | 1965 | 22. YELLOW ROSE | 1966 |
| 9. THE FLIGHT | 1965 | 23. FIGURES | 1966 |
| 10. CLIMAX | 1966 | 24. FLOWERS | 1966 |
| 11. OBJECTS | 1966 | 25. ABOVE THE HORIZON #3 | 1966 |
| 12. THE HARBOR | 1963 | 26. SEA FORMS | 1966 |
| 13. AFTERNOON | 1964 | 27. THE DEPTH | 1966 |
| 14. SEA CAPTAIN'S HOUSE | 1964 | | |

*You are cordially invited to attend
a reception and preview of work by*

LAMAR DODD

SUNDAY, APRIL 9th. 1967 - 2 - 5 P. M.

Exhibition continues through April 30th.

DANA FINE ARTS BUILDING

LAMAR DODD . . . head of the Department of Art and Chairman of the Division of Fine Arts of the University of Georgia, is well known to Agnes Scott and to Atlanta. Agnes Scott is greatly indebted to Mr. Dodd for his many contributions of time and effort throughout the years in assisting the development of its art department. His lectures on this campus have been appreciated and enjoyed by the campus community and the community of greater Atlanta. Mr. Dodd is a painter whose works have won awards regionally and nationally. He is represented in museums and private collections throughout the nation and abroad. Mr. Dodd was appointed by the State Dept. to the U. S. Advisory Committee on the Arts and has been President of the College Art Association of America. He is the current chairman of the Georgia Art Commission of the State of Georgia. These are only a few of the many distinguished positions and achievements of Lamar Dodd of Georgia. Agnes Scott is proud to present this exhibition of his outstanding work.

DEPARTMENT OF ART
AGNES SCOTT COLLEGE
DECATUR, GEORGIA 30030

2 July 3, 1968

564

Choose Delegates In Macon

Georgia's Loyal Democrats To Challenge Maddox Group

Macon's Dempsey Hotel will house an unprecedented political gathering in Georgia on August 10 when "The Georgia Convention of Loyal National Democrats" convenes to elect delegates to the Democratic National Convention who will challenge the seating of Lester Maddox and his slate.

Sponsored by the Georgia Democratic Party Forum, a reform group started within the Democratic Party following the 1966 gubernatorial election, the Macon meeting will be open to all Georgians who are registered voters who consider themselves Democrats and who will affirm their intentions to support and work for their party's national ticket in 1968.

The basis for the Forum's challenge of the Maddox delegation, according to Forum Chairman E. T. Kehrer of Cobb County, is that the criteria set forth in the Convention Call is violated by the presence of so many persons who are known to favor George Wallace of the American Independent Party.

Lester Maddox, who both ap-

points and heads up the delegation, operating under the unit rule, has been openly espousing Wallace as a presidential contender. Mr. Kehrer said that the question of party loyalty was the primary consideration, but that other issues are involved such as the fact that there are only three Negro voting delegates out of sixty-four voting delegates.

Challenge delegates will be elected at the Macon convention, with a caucus of each of the state's congressional districts bringing nominations before the entire convention. There, in plenary session, with opportunity for further nominations from the floor, the entire convention will vote on who is to represent them

in Chicago's Democratic National Convention which August 26. It is expected that the delegation of Georgian delegates will appear before the Credentials Committee a week earlier to submit written briefs and oral testimony according to established procedure. The Credentials Committee

COME TO MACON THIS SATURDAY

DON'T LET LESTER MADDOX SPEAK

FOR YOU AND GEORGIA DEMOCRATS

* * * * *

Keynote Speaker:

THE HON. JOHN CONYERS

Member of Congress
Detroit, Mich.

Also:

GEORGIA POLITICAL LEADERS

OBSERVERS SENT BY VICE-PRESIDENT
HUMPHREY AND SENATOR MCCARTHY

ALL REGISTERED GEORGIA VOTERS WHO ARE
DEMOCRATS AND WHO SIGNIFY THAT THEY
WILL SUPPORT THE NATIONAL TICKET ARE
INVITED

Attend Participate

Georgia Convention of Loyal National Democrats

DEMPSEY HOTEL
MACON, GA.

10:00 A. M. AUGUST 10, 1968

—If you are a loyal Democrat and don't want a predominantly pro-Wallace delegation speaking for you at the Democratic National Convention, come to Macon and help elect delegates from your congressional district.

—Anyone may participate who is a registered Georgia voter and who will affirm that they will support and work for the Democratic Party's Presidential ticket in 1968. That's 100% more than Lester Maddox and most of his hand-picked group will do.

Georgia Democratic Party Forum
P. O. Box 863
Atlanta, Ga. 30301

525 - 8549

255 - 0778

The Democratic National Committee has advised us that members of the challenge delegation will appear before the Credentials Committee in Chicago on about Aug. 19th.

We stand a good chance of unseating all or some of the Maddox-appointed delegates, especially those who have supported Barry Goldwater and/or George Wallace, if the "Georgia Convention of Loyal National Democrats" is successful and able to field a representative delegation. Come and support this effort to build a progressive Democratic Party in Georgia.

We need YOU in Macon. But if you can't come, but want to help, we need funds to help pay Convention expenses and to assist challenge delegates in making the trip to Chicago. Make checks payable to the Georgia Democratic Party Forum and send to the address indicated to the right.

COMMITTEE OF
ARTS AND LETTERS
FOR HUMPHREY

"A Clear, Brave, Civilizing Force"

Hubert Humphrey.

There has been nobody quite like him.
As a clear, brave, civilizing force in
our country, and in every sense of that
important word, he stands by himself.

Anyone who has taken the trouble to examine
his record over the past twenty odd years
not only his early and courageous championship
of civil rights, but along so many other
fruitful lines as well, must recognize instantly
that his is a career without parallel. His aims
are invariably in the right direction, the right
liberal direction, he is imaginative and creative,
he thinks to the end of the century not just till
tomorrow, and unlike so many who are caught up
in government, he remains flexible.

And it is this civilizing strength which is
precisely what the nation now stands in need of.

We can trust him, as we could not possibly trust
anyone else.

Let us give this great and good man a chance to
guide us in these very difficult and tangled times.

He alone can do it.

Conrad Aiken

Don't Just Sit There And Hope For A Change!

You Can Help
ELECT
EUGENE MCCARTHY
PRESIDENT

Come To The

Georgia Democratic Party Forum

August 10 - 10 a.m. Dempsey Hotel, Macon

Transportation Will Be Provided

Between Athens and Macon

For Information Contact

MCCARTHY HEADQUARTERS

151½ Clayton Street 549-4423

1968 HOTEL HEADQUARTERS

AUBURN—Holiday Inn
DOWNTOWN BIRMINGHAM

DUKE—Holiday Inn West
DURHAM, N. C.

NOTRE DAME—Hotel Elkhart
ELKHART, IND.

GEORGIA—One Day Trip
ATHENS, GA.

1968 FRESHMAN SCHEDULE

Sat.	Oct. 12	MIAMI . . . Tampa, Fla.	8:00 PM
Fri.	Oct. 25	CLEMSON	Atlanta 8:00 PM
Sat.	Nov. 9	F.S.U.	Moultrie, Ga. 8:00 PM
Fri.	Nov. 15	TENNESSEE	Atlanta 8:00 PM
Thurs.	Nov. 28	GEORGIA	Atlanta 2:30 PM

Address All Inquiries to
GEORGIA TECH ATHLETIC ASS'N
ATLANTA, GEORGIA 30332

GEORGIA TECH'S

Schedules of the Future

FOOTBALL 1968

Sep. 21	T. C. U.	Atlanta	2:00 p.m.
Sep. 28	Miami	Atlanta	2:00 p.m.
Oct. 5	Clemson	Atlanta	2:00 p.m.
Oct. 12	Tennessee	Atlanta	2:00 p.m.
Oct. 19	Auburn	Bir'ham	1:30 p.m.
Oct. 26	Tulane (H.C.)	Atlanta	2:00 p.m.
Nov. 2	Duke	Durham	2:00 p.m.
Nov. 9	Navy	Atlanta	2:00 p.m.
Nov. 16	Notre Dame	S. Bend	1:30 p.m.
Nov. 30	Georgia	Athens	2:00 p.m.

Tech's Grant Field seating capacity 59,809

1969 FOOTBALL

Sept. 20	S.M.U. at Atlanta, Ga.
Sept. 27	Baylor at Atlanta, Ga.
Oct. 4	Clemson at Atlanta, Ga.
Oct. 11	Tennessee at Knoxville, Tenn.
Oct. 18	Auburn at Atlanta, Ga.
Oct. 25	Sou. Cal. at Los Angeles
Nov. 1	Duke at Atlanta, Ga.
Nov. 8	Tulane at New Orleans, La.
Nov. 15	Notre Dame at Atlanta, Ga.
Nov. 29	Georgia at Atlanta, Ga.

Seven home games

1970 FOOTBALL

Sept. 19	Florida State at Atlanta, Ga.
Sept. 26	Miami at Atlanta, Ga.
Oct. 3	Clemson at Atlanta, Ga.
Oct. 10	Tennessee at Atlanta, Ga.
Oct. 17	Auburn at Birmingham, Ala.
Oct. 24	Tulane at Atlanta, Ga.
Oct. 31	Duke at Durham, N. C.
Nov. 7	Navy at Atlanta, Ga.
Nov. 14	Notre Dame at South Bend, Ind.
Nov. 28	Georgia at Athens, Ga.

Six home games

1971 FOOTBALL

Sept. 18	Michigan State at Atlanta, Ga.
Sept. 25	Army at Atlanta, Ga.
Oct. 2	Clemson at Atlanta, Ga.
Oct. 9	Tennessee at Knoxville, Tenn.
Oct. 16	Auburn at Atlanta, Ga.
Oct. 23	Tulane at New Orleans, La.
Oct. 30	Duke at Atlanta, Ga.
Nov. 6	Navy (site undecided)
Nov. 13	F. S. U. at Atlanta, Ga.
Nov. 27	Georgia at Atlanta, Ga.

Seven home games

1972 FOOTBALL

Sept. 23	Michigan State at East Lansing, Mich.
Sept. 30	Rice at Atlanta, Ga.
Oct. 7	Clemson at Atlanta, Ga.
Oct. 14	Tennessee at Atlanta, Ga.
Oct. 21	Auburn at Birmingham, Ala.
Oct. 28	Tulane at Atlanta, Ga.
Nov. 4	Duke at Durham, N. C.
Nov. 11	Boston College at Atlanta, Ga.
Nov. 18	Navy at Atlanta, Ga.
Dec. 2	Georgia at Athens, Ga.

Six home games

**IMPORTANT
INFORMATION
ABOUT YOUR 1968
GEORGIA TECH
FOOTBALL TICKET
APPLICATION**

Georgia Tech Athletic Association



IMPORTANT

FOOTBALL SEATING PRIORITY SYSTEM

The following priority system will be used for assigning seats ordered by the priority deadline of May 13, 1968. Orders received in this office after May 13, will be assigned seats in the order of date received.

- I. **Active Alumni (Alumni contributing to the current Alumni Roll Call) are assigned before any inactive alumni.**

SEASON TICKETS — Assignment of improved seats or seats ordered for the first time are made according to the priority calculated as follows:

Class year, less consecutive Alumni Roll Calls answered, less consecutive years season tickets have been purchased. Alumni with the same priority are assigned in the order of the date that the application is received.

There is no limit to the number of season tickets which may be ordered.

Each alumnus is eligible for four seats only in the West Stands, if they are available when his order is filled. If sideline seats are not available, North or South Stand seats will be assigned.

SINGLE GAME TICKETS — Seats are assigned according to the priority calculated as follows:

Class year, less consecutive Alumni Roll Calls answered. Alumni with same priority are assigned in the order of the date that the application is received.

Away Games — Active alumni in the state in which the game is to be played are assigned seats before others.

- II. **Inactive Alumni (Alumni not contributing to the current Alumni Roll Call) are assigned after active alumni.**

SEASON TICKETS — Assignment of improved seats or seats ordered for the first time are made according to the priority calculated as follows:

Class year, less consecutive years season tickets have been purchased. Alumni with the same priority are assigned in order of the date that the application is received. There is no limit to the number of season tickets which may be ordered. Each alumnus is eligible for four seats in the West Stands if they are available when his order is filled. If sideline seats are not available, North or South Stand seats will be assigned.

SINGLE GAME TICKETS — Seats are assigned according to the class year. Alumni with the same class are assigned in the order of the date the application is received.

III. Option Holders (Those who purchased options in 1962 for the right to purchase season tickets for good East Stand seats for ten years)

SEASON TICKETS — Filled in a special section of the East Stand.

SINGLE GAME TICKETS — (home and away)
— Assigned in the order of the date which the application is received.

IV. Non-Alumni

SEASON TICKETS — Assignment of improved seats or seats ordered for the first time are made according to the priority calculated as follows:

Consecutive years season tickets have been purchased. Non-Alumni with the same priority are assigned in order of the date that the application is received. Non-Alumni will be assigned the same seats in the West Stand purchased in 1967, if reordered.

SINGLE GAME TICKETS — (home and away)
— Assigned in the order of the date the application is received.

Alumni and Non-Alumni seated in Sections 47, 48 and 49 of the East Upper Deck in 1967 will automatically be moved to an improved location in 1968, according to the seating categories. This change is due to the expansion of the student section.

HOMECOMING GAME

OCTOBER 26, 1968 — TECH vs. TULANE

Reunion class members are assigned a maximum of four seats in a special section of the East Stand Upper Deck. Additional seats will be assigned by priority.

SINGLE GAME TICKETS — (Georgia)

A limit of four will be placed on the number of Georgia tickets that may be purchased by Active Alumni.

(Tennessee) No single game tickets are available for the Tennessee game. Georgia Tech's contract requires that 12,000 tickets be given to the visiting team.

No limit will be placed on Texas Christian, Miami, Clemson, Tulane and Navy.

PERSONAL SIGNATURE REQUIRED

All records are kept in individual names. The check accompanying the application must bear the personal signature of the individual applying. This requirement protects each individual's priority from misuse by another party. Checks should be made payable to the Georgia Tech Athletic Association, and mailed to the following address:

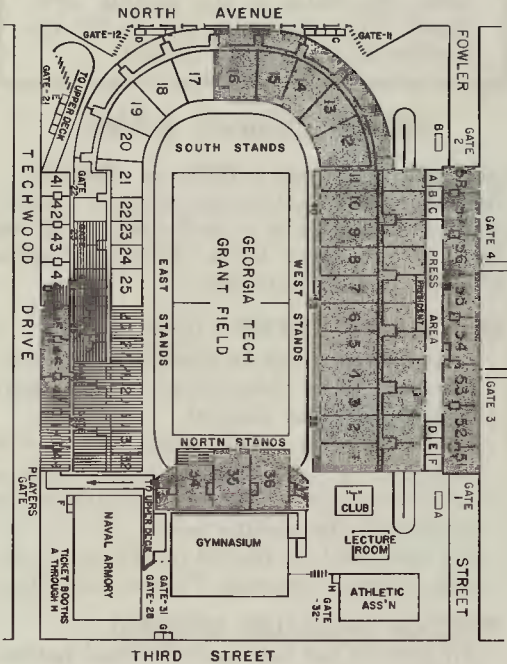
Georgia Tech Athletic Association
Atlanta, Georgia 30332





Payment in full is required with each application. No handling or mailing charge is required.

TICKETS WILL BE MAILED IN SEPTEMBER

No tickets will be distributed before September 1.

STADIUM DIAGRAM



-  Georgia Tech Students
-  Option Holders
-  Visiting Team and Single Game Tickets
-  Season Tickets

(Seating Assignment breakdown may be found on the back of this folder)

SEATING ASSIGNMENT

Assignment of seats to season ticket purchasers is handled by a computer in priority order. Height and yard line are considered in making each assignment. West Stand lower deck seats high on the fifty yard line are considered most desirable. Beginning at that point, seat locations are assigned in the following sequence:

- Category 1. West Stand, Lower Deck
Sections 5, 6, 7 and 8 (rows 46-1) considered simultaneously)
- Category 2. West Stand, Upper Deck
Sections 54, 55, 56 (rows 1-26) and sections 53 and 57 (rows 1-10)
- Category 3. West Stand, Lower Deck
Sections 3, 4, 9, 10 (rows 46-1) and sections 2 and 11 (rows 46-30)
- Category 4. West Stand, Upper Deck
Sections 53 and 57 (rows 11-26) and sections 51, 52 and 58 (rows 1-26)
- Category 5. West Stand, Lower Deck
Sections 2 and 11 (rows 29-1) and section 1
- Category 6. East Stand, Upper Deck
Sections 45 and 46 (rows 1-30)
- Category 7. North Stand
Sections 33, 34, 35, 36 and 37 (rows 44-11)
- Category 8. South Stand
Sections 12 and 13 (rows 38-11)
- Category 9. North Stand
Sections 35 and 36 (rows 10-1)
- Category 10. South Stand
Sections 14, 15 and 16 (rows 38-11)

**INTER-
NATIONAL
BAZAAR**



DECEMBER

345

**UNIVERSITY UNION
MEMORIAL HALL**

**TUES. 7-11 pm
WED. 11-5 & 9 30-11
THUR. 10-5 pm**

[1968]

0 840171

1968 GEORGIA TECH FOOTBALL TICKET APPLICATION

FOR

ACTIVE ALUMNUS

FILE NUMBER	FOLLOWING DATA APPLICABLE ONLY TO GEORGIA TECH ALUMNI		CONSECUTIVE YEARS YOU HAVE BOUGHT SEASON TICKETS SINCE 1948	NUMBER OF SEASON TICKETS YOU BOUGHT LAST YEAR
	CONSECUTIVE ROLL CALLS	CLASS YEAR		
0840171	10		20	4

NOTICE!!
IS THIS
ADDRESS
CORRECT?

MR HUGHES SPALDING
434 TRUST CO GA BLDG
ATLANTA GA 30303

IF

NOT

SHOW CORRECT
ADDRESS HERE
PLEASE
PRINT

NAME
FIRST LINE OF ADDRESS
SECOND LINE OF ADDRESS
THIRD LINE OF ADDRESS (IF ANY)

ORDER **SEASON TICKETS** HERE

INCLUDES SIX HOME GAMES:

TEXAS CHRISTIAN — MIAMI — CLEMSON

TENNESSEE — TULANE — NAVY

CHECK ONE

21

 PREFER '67 SEAT LOCATION IMPROVE LOCATION IF POSSIBLENUMBER OF
SEASON TICKETS

_____ @ \$36.00\$ _____ A

TICKET PRIORITIES EXPIRE MON. MAY 13

SEE REVERSE SIDE

Please do not write in this space

This Space for Machine Records

ORDER SINGLE GAME TICKETS HERE

HOME GAMES

Sept. 21 **TEXAS CHRISTIAN**

_____ @ \$6.00 \$_____ D

Sept. 28 **MIAMI**

_____ @ \$6.00 \$_____ F

Oct. 5 **CLEMSON**

_____ @ \$6.00 \$_____ H

Oct. 12 **TENNESSEE**

AVAILABLE IN SEASON TICKETS ONLY \$_____ K

Oct. 26 **TULANE** (Homecoming)

_____ @ \$6.00 \$_____ M

Nov. 9 **NAVY**

_____ @ \$6.00 \$_____ P

AWAY GAMES

Oct. 19 **AUBURN** at Birmingham

_____ @ \$6.00 \$_____ R

Nov. 2 **DUKE** at Durham

_____ @ \$6.00 \$_____ S

Nov. 16 **NOTRE DAME** at South Bend

_____ @ \$7.00 \$_____ T

Nov. 30 **GEORGIA** at Athens

_____ @ \$6.00 (Limit of Four) \$_____ U

TOTAL SINGLE GAME TICKETS \$_____

TOTAL SEASON TICKETS \$_____

(SEE REVERSE SIDE)

TOTAL ORDER \$_____

RETURN APPLICATION WITH YOUR PERSONAL
CHECK NO. _____ MADE PAYABLE TO THE

GEORGIA TECH ATHLETIC ASSOCIATION
ATLANTA, GEORGIA 30332

TICKET PRIORITIES EXPIRE MON., MAY 13

Ignatius House

6700 Riverside Drive, N. W.

Atlanta, Georgia 30328

Fr. John L. Hein, S. J.
Fr. Philip E. Hanley, S. J.
Bro. Claude L. Ory, S. J.
Mrs. Harrison Gogan

PROGRAMS

Weekend Retreats
Weekend Exercises in
Christian Community
Institutes on Theology
Days of Recollection
Parish Retreats in Parishes
Business Community Seminars
Home Retreats

For Information and
Reservations

Phone 255-0503

SCHEDULE 1969

J A N U A R Y

- 10-12 - Open
- 19 - Theology Institute
- 24-26 - Women - Weekend Retreat
- 31- 2 - Men - Weekend Retreat

F E B R U A R Y

- 9 - Theology Institute
- 10-12 - Episcopal Clergy
- 14-16 - Weekend Exercises of
Christian Community
- 21-23 - Women - Weekend Retreat
- 25 - Day of Recollection
- 28- 2 - Men - ~~Weekend~~ Retreat

M A R C H

- 4 - Day of Recollection
- 7 - 9 - Men - Weekend Retreat
- 11 - Day of Recollection
- 14-16 - Women - Weekend Retreat
- 18 - Day of Recollection
- 21-23 - Men - Weekend Retreat
- 25 - Day of Recollection
- 28-30 - Open

A P R I L

- 6 - Easter
- 11-13 - Open
- 18-20 - Men - Weekend Retreat
- 25-27 - Women - Weekend Retreat

M A Y

- 2 - 4 - Open
- 9 -11 - Men - Weekend Retreat
- 16-18 - Women - Weekend Retreat
- 23-25 - Open

PROGRAMS

Weekend Retreats: These begin Friday at 7:30 p.m. and end Sunday at 7:30 p.m. Presentations on Christianity Today are given to stimulate reflective prayer throughout most of the day.

Weekend Exercises in Christian Community: These begin Friday at 7:30 p.m. and end Sunday at 7:30 p.m. A directed program of dialogue helps men and women of all ages and states in life discuss the reality of the Church today - "The People of God."

Institutes on Theology: The Sunday program will consist of four lectures on current religious problems. Each will be followed by a discussion period. The program will begin at 9:00 a.m. and conclude with Mass at 5:30 p.m.

Days of Recollection: These will take place on five consecutive Tuesdays. The program will begin at 9:30 a.m. and conclude at 2:00 p.m. Mass will be included. The subject matter will be Scripture themes as applied today.

Parish Retreats: This is similar to the Weekend Exercises in Christian Community. It would take place in the parish,

would begin Friday evening at 8:00 p.m. Saturday would be from 9:00 a.m. to 9:00 p.m. Sunday would be from 2:00 p.m. to 7:00 p.m. Participants would go home at night. Meals would be planned by a parish committee. You and members of your parish are encouraged to invite us to conduct such a retreat.

Business Community Seminars: Participants would be men and women who wish to give an hour and a half each week for six to ten consecutive weeks to a discussion of contemporary theological problems. These sessions may take place at noon or after business hours at the convenience of the group. They would be held in a private room of a restaurant or in some other convenient place. You are encouraged to form such a group.

Home Retreats: This is offered to small groups of men and women. The program would consist of the group meeting once a week for a period of ten to twelve weeks. Other than the meetings each member of the group would be expected to spend an hour each day on reflective reading. You are invited to form such a group. This is for persons who cannot get away for a weekend retreat.