


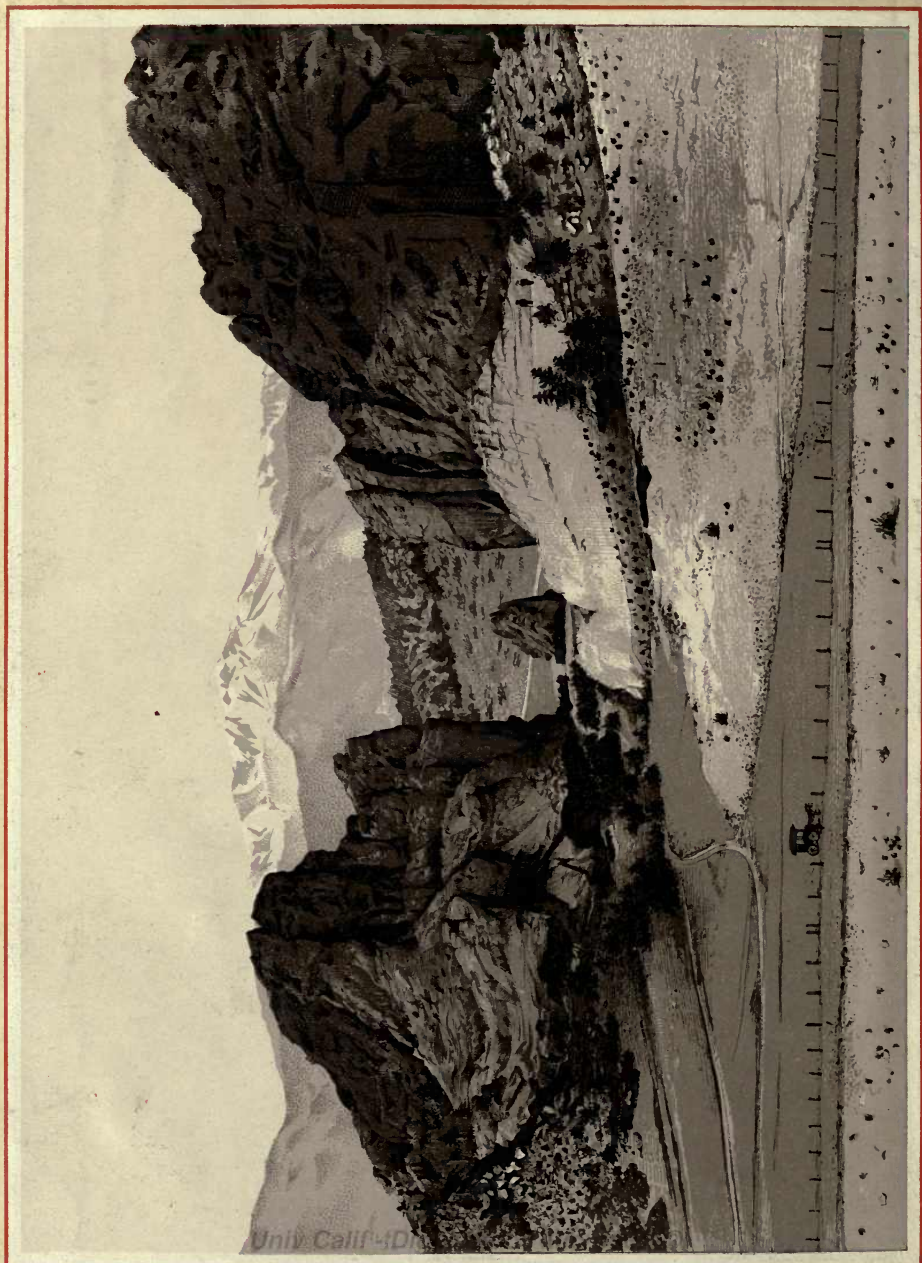
F

721

.A3

Album
of Views
ON THE
Denver &
Rio Grande





GARDEN OF THE GODS AND PIKES PEAK.

B.L. Plate in back

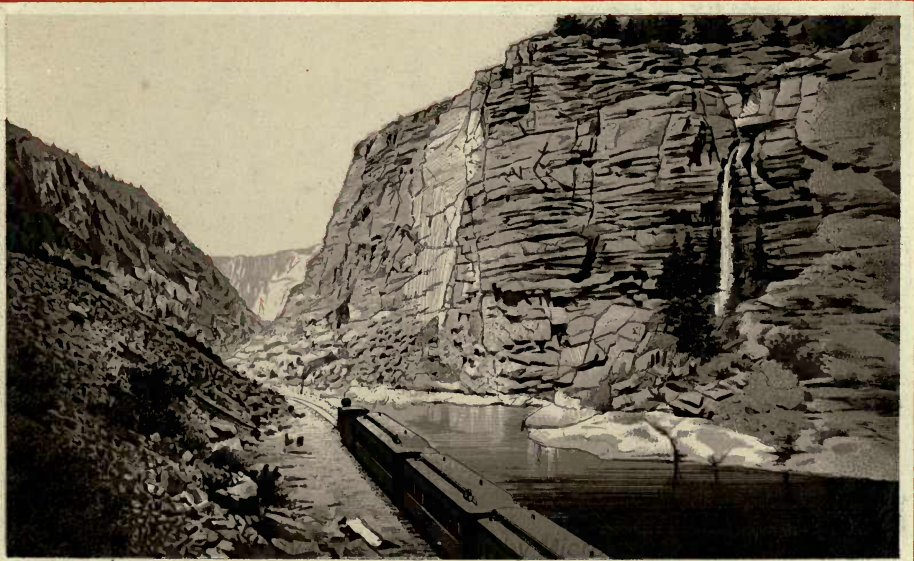
4998

Album



APPROACH TO THE BLACK CANON .

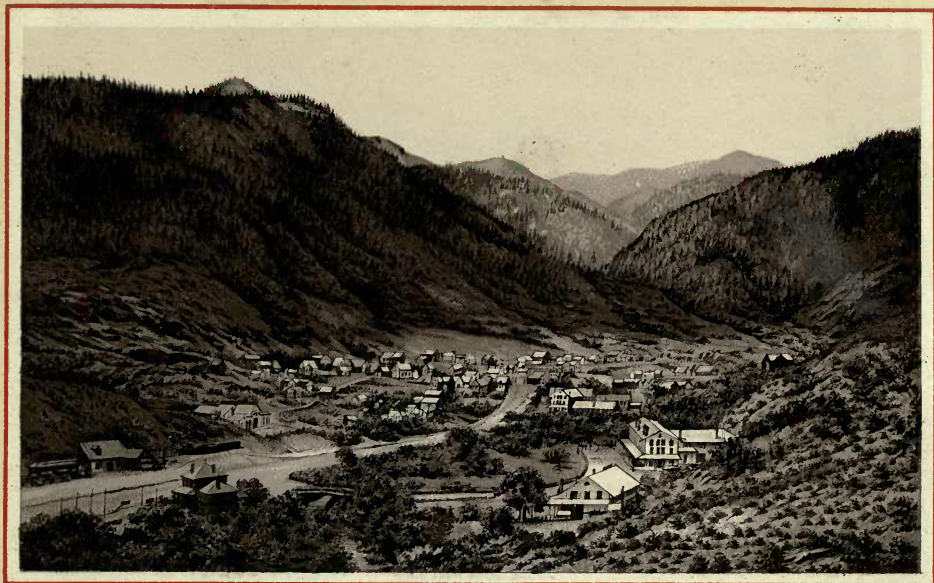
F721
.A3



CHIPETA FALLS, BLACK CANON .



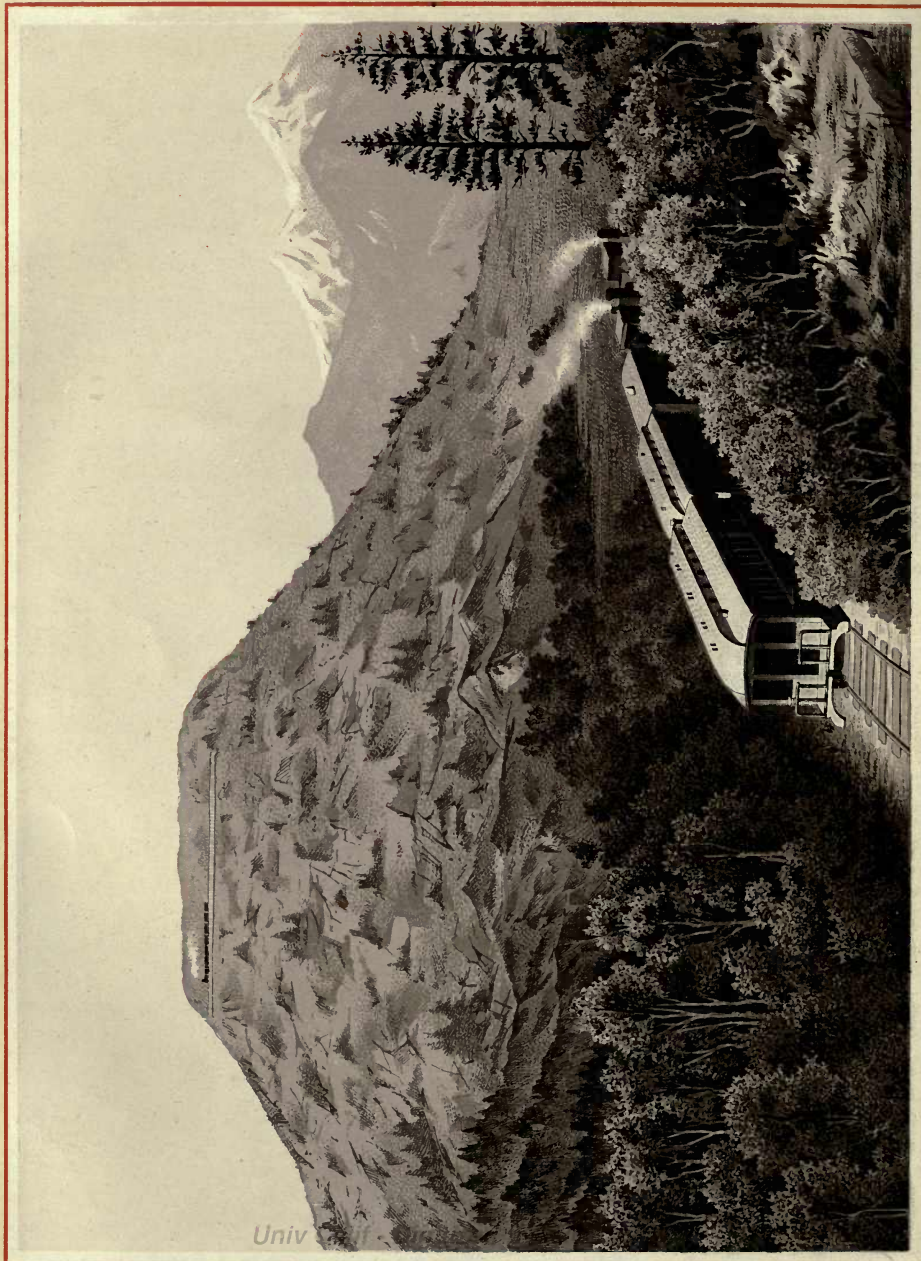
CASLE GATE - PRICE CANON .



MANITOU

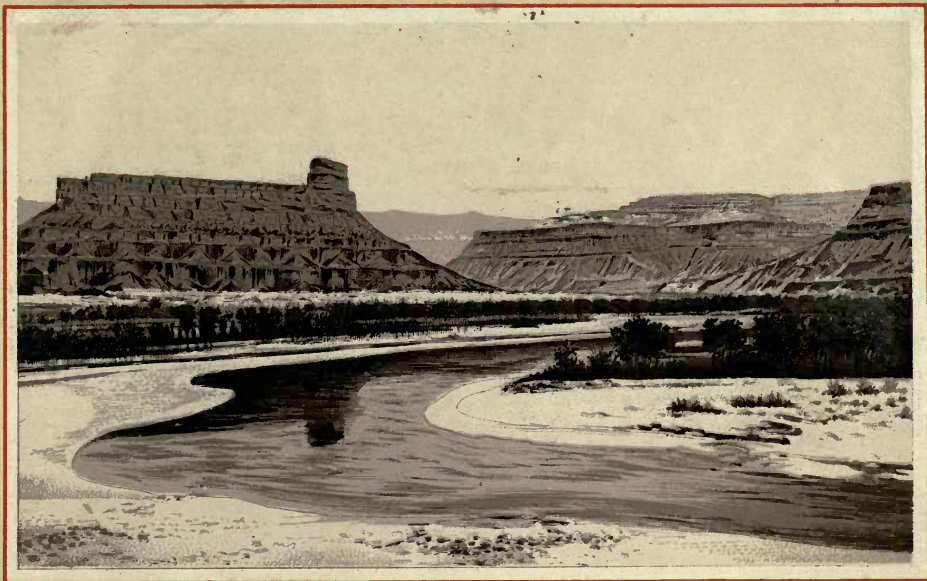


WILLIAMS CANON MANITOU



Univ

VELA PASS - RAILROAD ABOVE THE CLOUDS



GUNNISON BUTTE - GREEN RIVER



Copyrighted 1886 by W.H. Lawrence & Co. Denver, Colo.

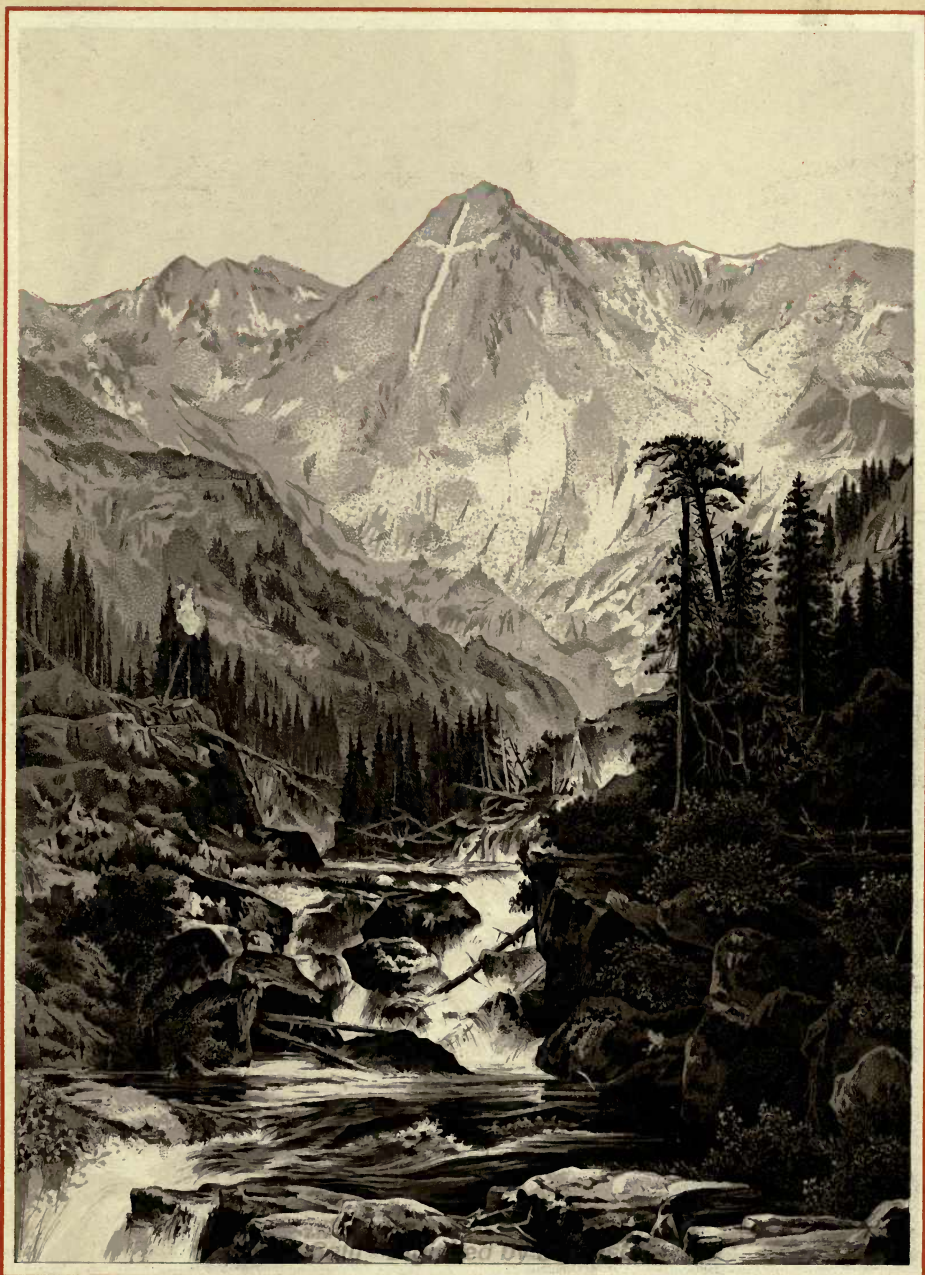
THE GREAT SALT LAKE



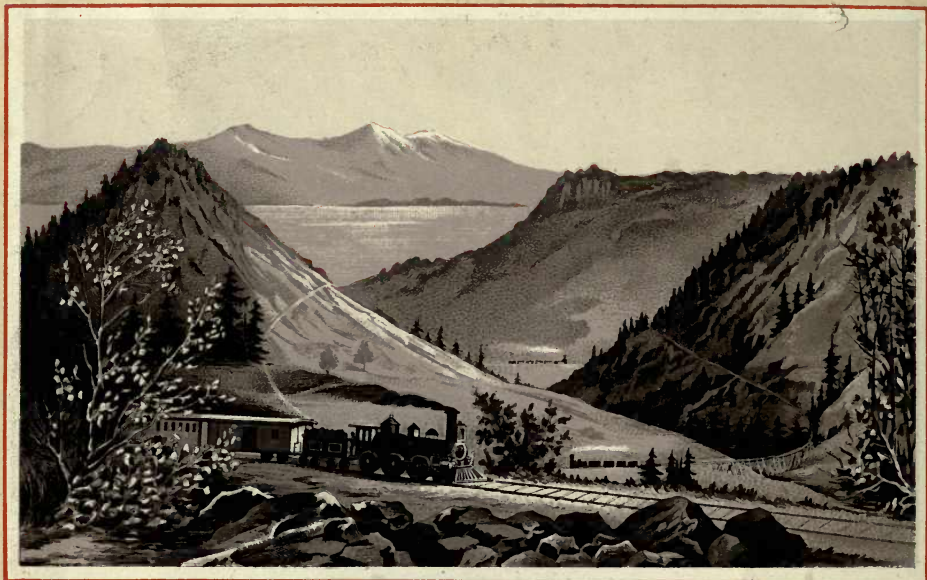
THE UPPER TWIN LAKE.



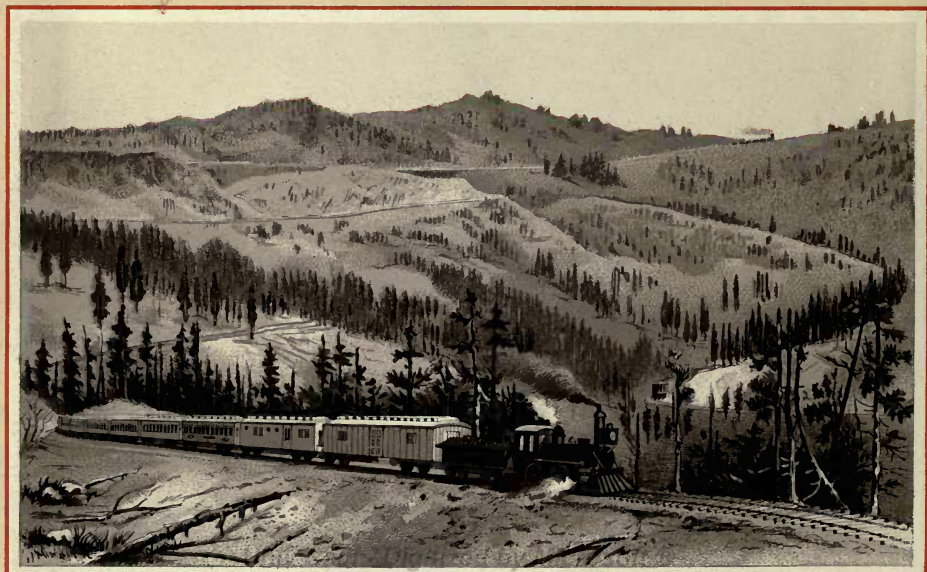
FREMONT PASS.



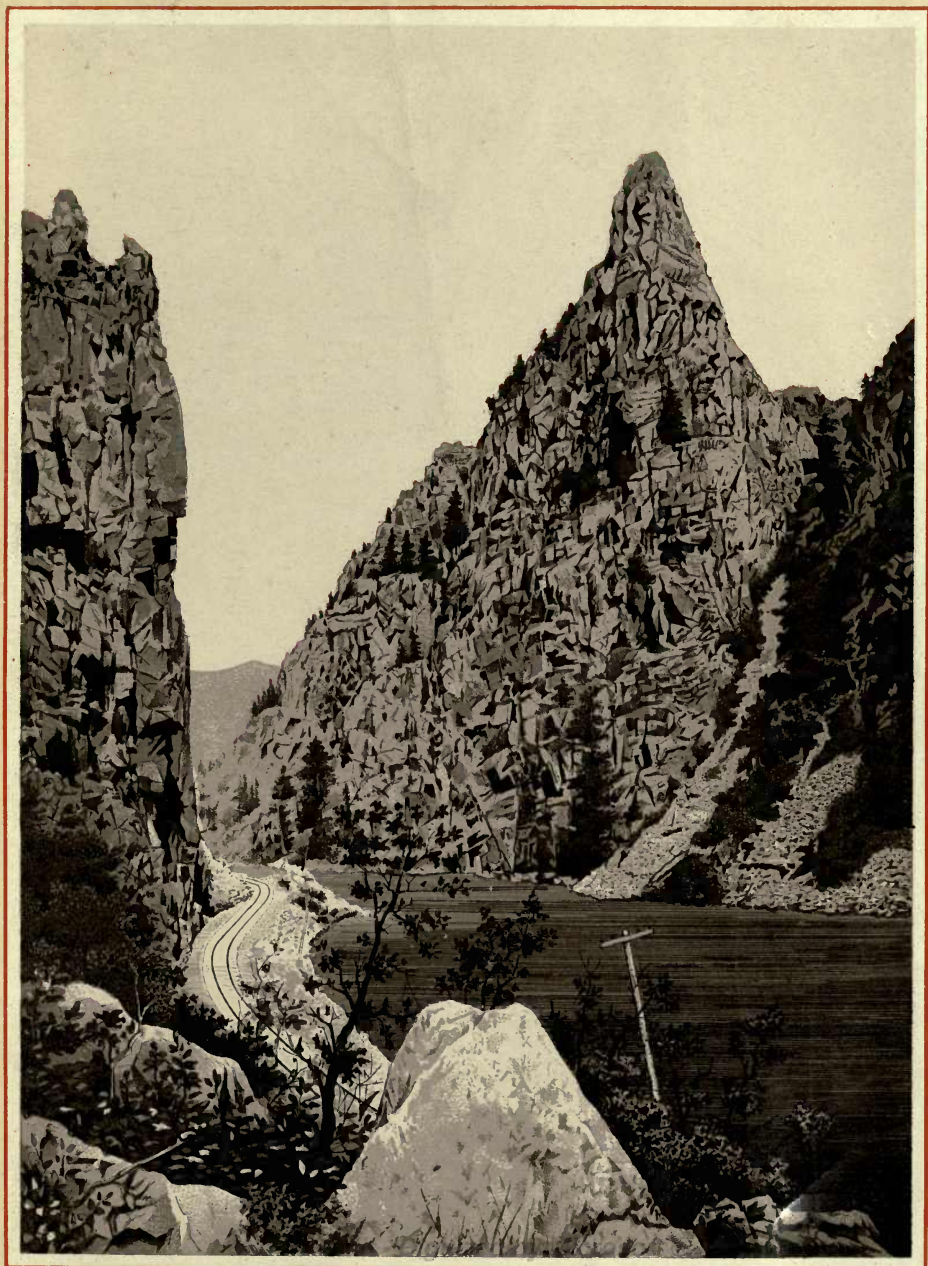
MOUNT OF THE HOLY CROSS



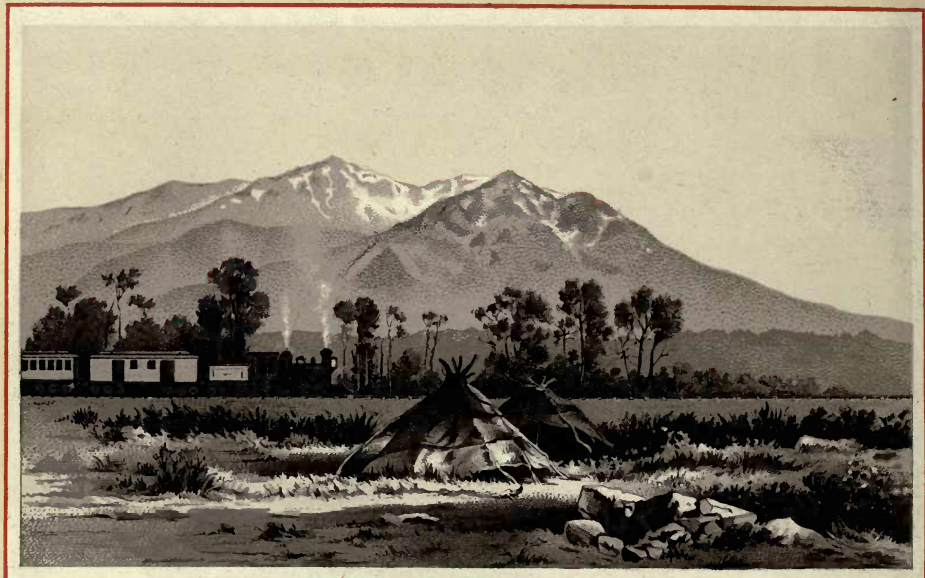
MARSHALL PASS-EASTERN SLOPE,CONTINENTAL DIVIDE



MARSHALL PASS-WESTERN SLOPE,CONTINENTAL DIVIDE



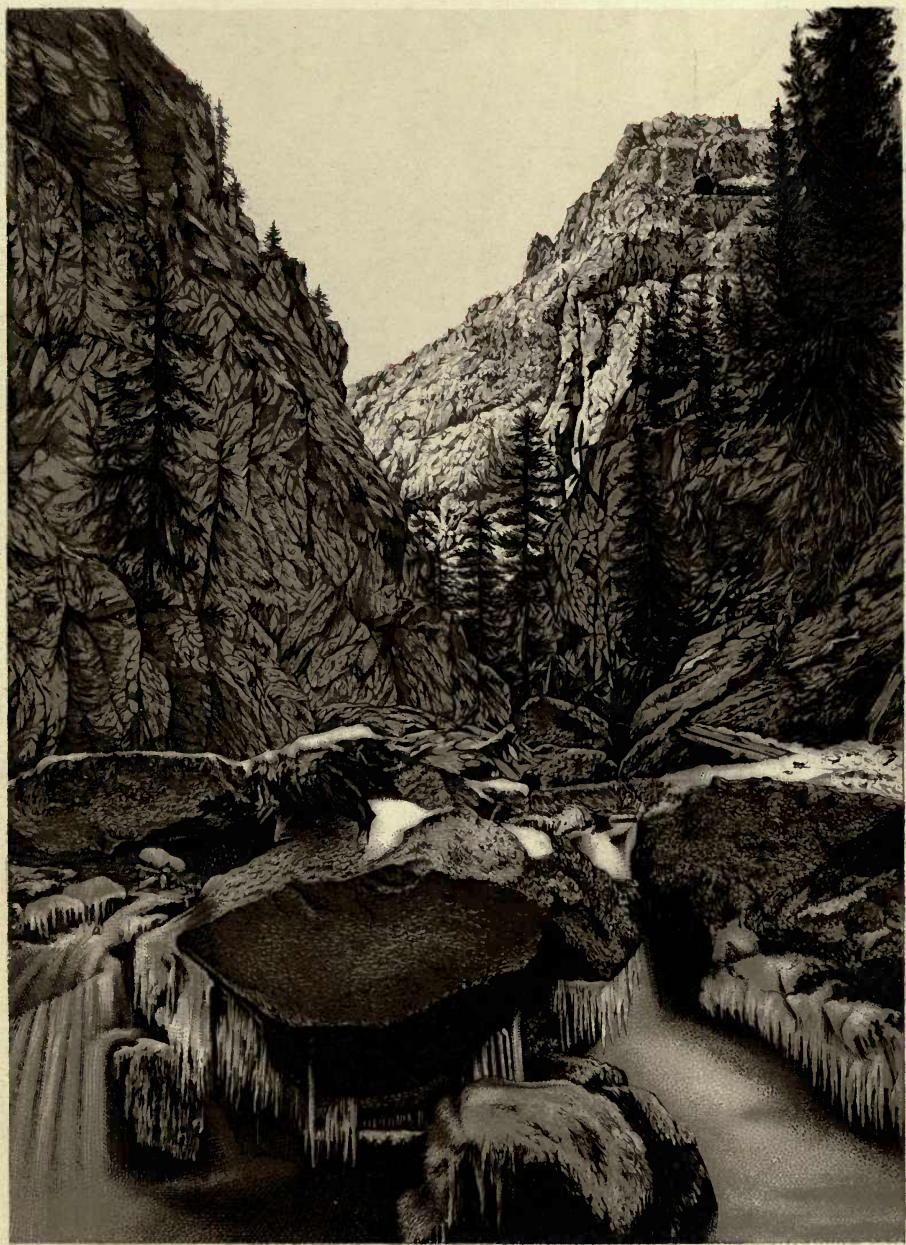
CURRECANTI NEEDLE—BLACK CANON OF THE GUNNISON.



SIERRA BLANCA



WAGON WHEEL GAP



TOITFC GORGE AND TUNNEL.



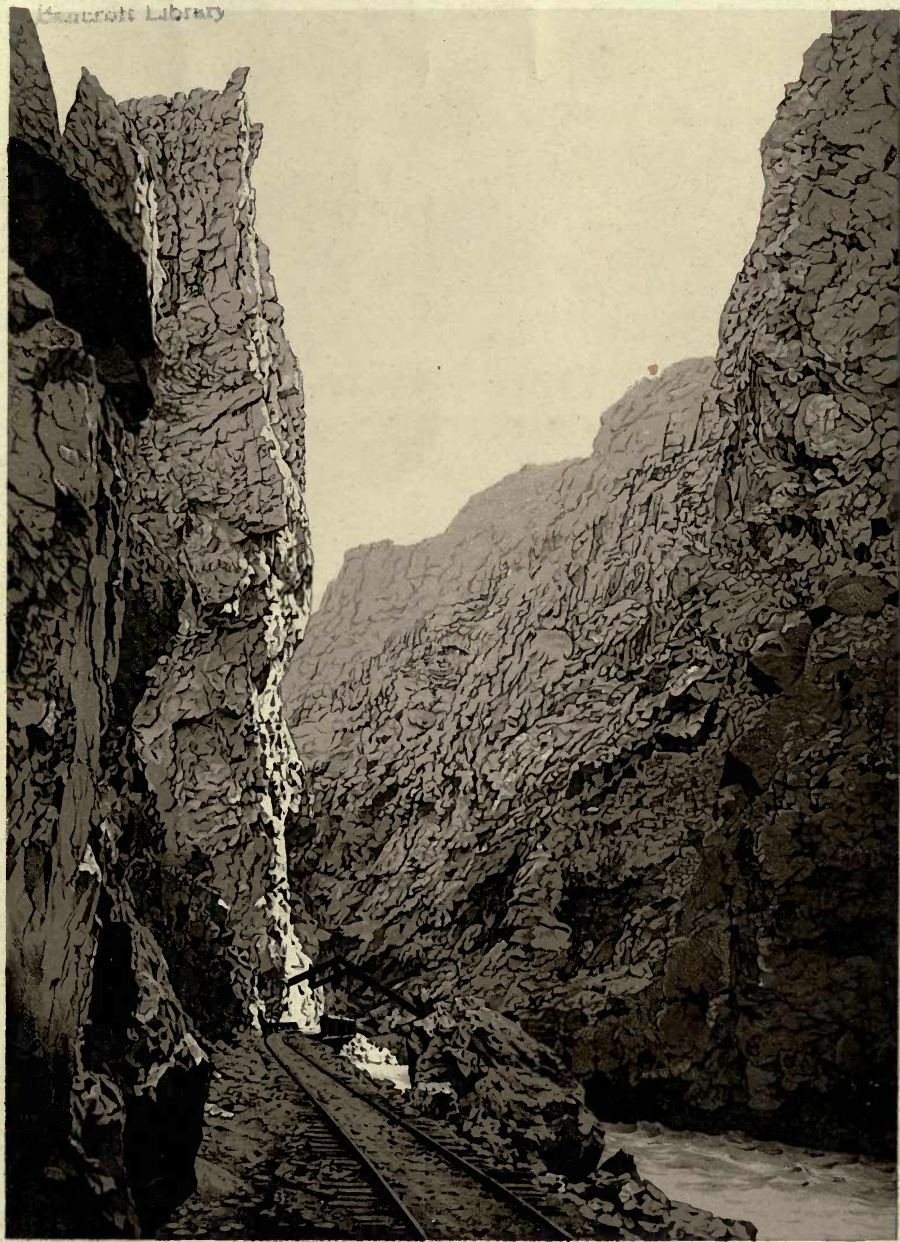
PHANTOM CURVE.



SILVERTON AND SULTAN MOUNTAIN.

Harvard Library

F. J. BERRYESSA MAR, 1938



ROYAL GORGE - GRAND CANYON OF THE ARKANSAS

Bancroft Library

June 29 1889

