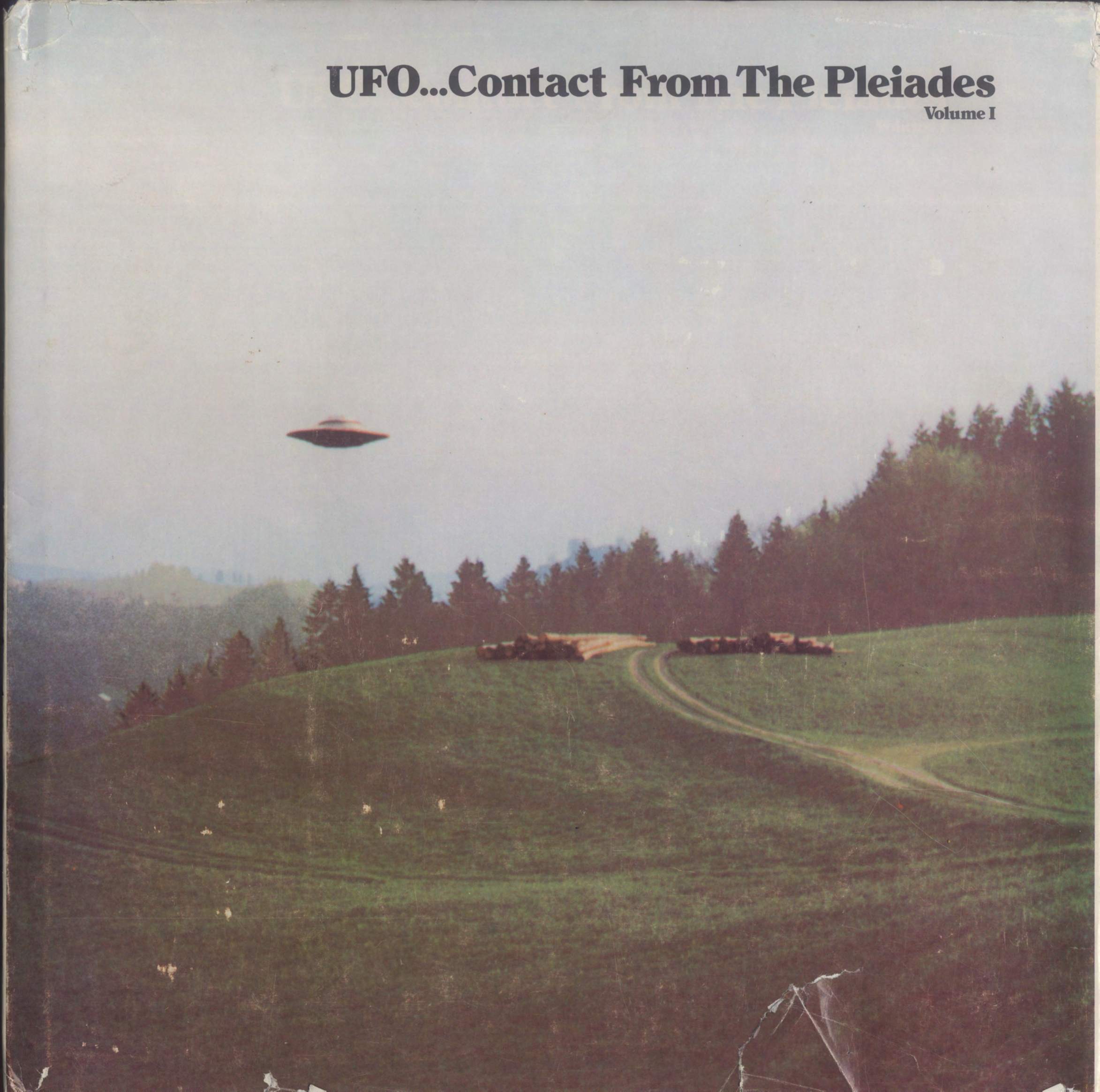


UFO...Contact From The Pleiades

Volume I



This book is not a work of fiction, nor is it a technical treatise. . . . It is in fact an unprecedented Photo-Journal which, for the first time anywhere, offers the beginnings of the inside story to one of the most remarkable series of extraterrestrial encounters ever documented and recorded in the history of mankind. After three years of highly confidential, scientific study under tight security, skilled investigators bring you the amazing photo-events and photo-experiences of a Swiss farmer/caretaker, his startling contacts with extraterrestrial visitors from the Pleiades, and the unparalleled mountain of evidence left in the wake of these unworldly events.

UFO . . . Contact from the Pleiades presents the incredible facts surrounding the ongoing events that began January 28, 1975 . . . and that still continue today as you read this. It is an extraordinary account about Lt. Col. Wendelle C. Stevens (USAF-RET.) and his hand-picked investigative team as they began a three year investigation into the massive amount of evidence, which includes hundreds of clear, sharp photographs, scores of landing tracks, numerous eye witnesses, 8mm motion picture film, more than 3,000 pages of notes on the contact conversations, samples of alien metals from the Pleiadian spacecraft, and much, much more. And it is an astonishing record of the doors which these amazing events opened into ancient history, revealing unbelievable but true correlations between ancient man and visitors from the Pleiades, supporting the Swiss events in an unprecedented manner.

By the time you reach the final chapter in this Photo-Journal, you will have reached an exciting new level of awareness concerning the previously "most impenetrable" mystery of our time . . . UFO's. Has the "most impenetrable" mystery of this century been solved? Can we now replace the term UFO with known . . . IFO . . . Identified Flying Object? Only you can decide.

UFO...Contact From The Pleiades

Volume I





UFO...Contact From The Pleiades

Volume I

"We, too, are still far removed from perfection and have to evolve constantly, just like yourselves. We are neither superior nor super-human, nor are we missionaries... we feel duty bound to the citizens of Earth, because our forebearers were their forebearers..."

*The Pleiadian cosmonaut, SEMJASE
February 8, 1975.*





"If the intelligence of these (UFO) creatures were sufficiently superior to ours, they might choose to have little, if any contact with us."

*Brookings Institute (in a report on extraterrestrial life).
New York Times, December 15, 1960*

"The masses would merely revere us as gods, as in ages past, or go off in hysteria, that is why we regard it prudent to make contact with individual persons only for the time being, in order to disseminate, through them the knowledge concerning our existence and our coming to this planet."

*SEMJASE, Pleiadian Cosmonaut
February 8, 1975*

"There were men from the sky in the earth in these days."

Hebrew Book of Light, 12th-13th Century

"Mankind are here because they are the offspring of parents who were first brought here from another planet. And power was given them to propagate their species. And they were commanded to multiply and replenish the earth."

Brigham Young

"I can assure you that flying saucers, given that they exist, are not constructed by any power on earth."

*President Harry S. Truman
Press Conference, April 4, 1950*

"Something unknown to our understanding is visiting this earth."

*Dr. Mitrovan Zverev
Soviet Scientist*


"These objects (UFO) are conceived and directed by intelligent beings of a very high order. They probably do not originate in our solar system, perhaps not even in our galaxy."

Dr. Hermann Oberth, International Renowned Rocket and Space Travel Authority, and often called the Father of the V-1 and V-2 Weaponry of World War II. Press Conference in Innsbruck, Austria, June, 1954.

"In the distant future we will encounter some other intelligent life."

Frank Bormann, Astronaut





*“The heaven by night is full of marvels,
There is an evening star,
Hesperus fairest of the stars, sharer of
The throne of Aphrodite,
One lovers know so well,
A group of seven stars, the Pleiades.
They are, as it were, the nymphs of heaven.
As doves, the Pleiades, they bring to
Zeus ambrosia, yet at the same time
They are comely Goddesses. . . The daughters
Of the Titan Atlas and spouses of the Gods.”*

Ancient Grecian Poem



The Pleiades

"When these stars rise, all harm rises from the Earth."

*Muhammed, Greatest Prophet Leader
of The Moslem World, Written Centuries Ago*

A cluster of stars known throughout history as the "Seven Sisters", the "Daughters of Zeus"... Maia, Electra, Celano, Taygete, Sterope, Merope, and Alcoyne... mothers of Greek gods, they are believed to have been turned into stars by Zeus, so that they might be safe from Orion who had chased them for seven years. There are no stars so widely acclaimed as these; their beauty and grace are spoken of in literature from all cultures, past and present.

"The Pleiades seem to be among the first stars mentioned in astronomical literature, appearing in Chinese annals of 2357 B.C."

*Introducing the Constellations
Robert B. Baker*

No other area of the sky has been investigated as often and as carefully as that containing the Pleiades. A small two inch telescope was used in 1664, by Robert Hooke, who counted 78 individual stars in this group. In 1876 Max Wolf of the Paris Observatory recorded 625 stars, and in 1887 a four-hour chart made it possible for Paul and Prosper Henry to map 2,326 single stars.

Located in the constellation Taurus, The Bull, the Pleiades (Plee'ya dez) look like a small reproduction of the Big Dipper and are often mislabeled the Little Dipper. Approximately 500 light years from Earth, the stars of the Pleiades are clustered closer together than in ordinary space, averaging no more than one light year between stars.

"When the skies are searched for signals from extraterrestrial civilizations, search carefully in the Pleiades."

*Dr. Irwin Ginsburgh, PhD.
Author, "First, Man. Then, Adam!"*





"There must be other life in space" is the belief that has driven mankind in an exhaustive search of space surrounding our solitary globe. Untold fortunes support every method imaginable. The American CETI Program satellites hurtle their way towards the unknown universe carrying messages designed for alien discovery. Monstrous radio telescopes search out intelligent sounds from distant galaxies. Special Russian computers search inwardly in the volumes of ancient earth histories, attempting to locate the source of possible alien life from correlating traces of centuries-old extraterrestrial visitation. In every way possible, we communicate, watch and listen.

On Tuesday, January 28th, 1975, perhaps aided by such efforts, events of untold magnitude began to unfold. Unknown to the general public, it was on this day, in the remote hillsides of Canton Zurich, Switzerland, that the first evidence of a man's ongoing encounters with beings from another world began...



The Experience...The Beginning

Tuesday, January 28th, 1975,
2:12 P.M.

The Swiss countryside of Hinwel.

As Mr. Meier looked across the empty road toward the meadow and forest beyond, noting to himself how remote they seemed. . . .

Suddenly it began. . . .

Meier heard a very unusual sound. A low, throbbing humming sound that defied description. Then he saw it. A strange silver disc-shaped craft circling slowly above. He couldn't believe his eyes!

He recovered just in time to take several quick photographs, almost forgetting the camera was there, before the strange craft swooped down and softly landed in the clearing 100 meters away. About seven meters in diameter, it just sat there quietly in the tall green grass.

With adrenalin pumping, Mr. Meier ran excitedly towards it. . . but without warning, he was arrested by an unknown force within 50 meters of the craft. . . it was like trying to advance in a hurricane wind. A strong barrier, invisible in nature. Then, from behind the craft, the cosmonaut came, walking directly towards him. . . Meier strained his eyes in disbelief!

His first contact had begun.

"You call us extraterrestrials or star-men, and you attribute to us superhuman powers even though you do not know us. Regarding this, we are men, like you, but our knowledge and our understanding exceeds yours considerably, especially in the technical field."

SEMJASE, Pleiadian Cosmonaut, 1975

Photograph taken by Eduard "Billy" Meier
March 18, 1975, 09:07 hours
Prior to 8th contact as craft approached.
Winkelriot, Switzerland

Eduard "Billy" Meier a Swiss farmer/caretaker and father of three had left his farm house because of an odd compulsion to take his camera and leave... that's the only way that he could describe it. As he had driven his moped curiously through the countryside, following the unusual thought patterns that seemed so strong, Mr. Meier had no way of knowing that within hours his experience would produce historic evidence of extraterrestrial intelligence surpassing anything ever seen by modern civilization surviving on the only planet believed to support life in the Universe.

Time after time, he followed these same impulses in the ensuing months, returning home after each event with rolls and rolls of undeveloped film and reports of phenomenally detailed conversations with beings from the star system known to us as the Pleiades. These unworldly meetings took place at all hours of the day and night, leaving substantial evidence in their wake... hundreds of remarkably clear photographs... landing tracks... burned bushes... 8mm motion picture footage... sound recordings of the sleek spacecraft in flight... physical samples... and over a dozen eye witnesses who would substantiate his story, some having filmed portions of the events themselves.

But from these contacts that would continue on an unprecedented scale over the next four years, came the most sought after evidence of all... wisdom, in the form of over 3,000 pages of notes and dissertations from the Pleiadians themselves.

"We, too, are still far removed from perfection and have to evolve constantly, just like yourselves. We are neither superior nor super-human, nor are we missionaries... but we have taken on certain tasks such as, for example, the supervision of developing life in space, particularly human, and to ensure a certain measure of order. In the course of these duties we do here and there approach the denizens of various worlds, select some individuals and instruct them. This we do only when a race is in a stage of higher evolution. Then we explain (and prove) to them that they are not the only thinking beings in the universe."

SEMJASE, Pleiadian Cosmonaut, 1975

"...and neither is it consistent with the truth that our brothers and sisters come from other parts of space on behalf of a God to bring to the world the long awaited peace. In no case do we come on behalf of anybody, since creation, by itself, confers no obligation (on us). It is a law unto itself, and every form of life must conform with it and become a part of it."

SEMJASE, Pleiadian Cosmonaut, 1975





"Several times we have tried to establish contact with terrestrial humans who might want to assist us in our task. We opened contact but the men selected gave evidence of not being sufficiently willing or loyal. Others were afraid of their own kind (fellow men) and permitted our contacts to go unreported. They explained that their own kind would consider them liars or mad, or would destroy their existence with intrigues.

The terrestrials of many organizations are busy studying our spacecraft but they did not always have available authentic photographs. Some are luminous effects accidentally photographed, others are downright falsifications . . . we are giving you the opportunity of taking photographs of our spaceships, and other similar opportunities will be afforded you so that you may obtain better photographs, be it technically or artistically than now exist."

SEMJASE, Pleiadian Cosmonaut, 1975

12 June, 1975, 10:38 hours

Location: Berg-Rumlikon near Thailingen

This sighting was a filming event only. The seven meter spacecraft (21 ft.) moved from left to right across this beautiful panorama. 8mm motion pictures were also taken. Mr. Meier has taken all of the still photographs on his Olympus 35 ECR camera having an F 42mm, 2.8 lens. The lens is jammed just short of infinity because of previous damage, thus hampering the focus of some photographs.

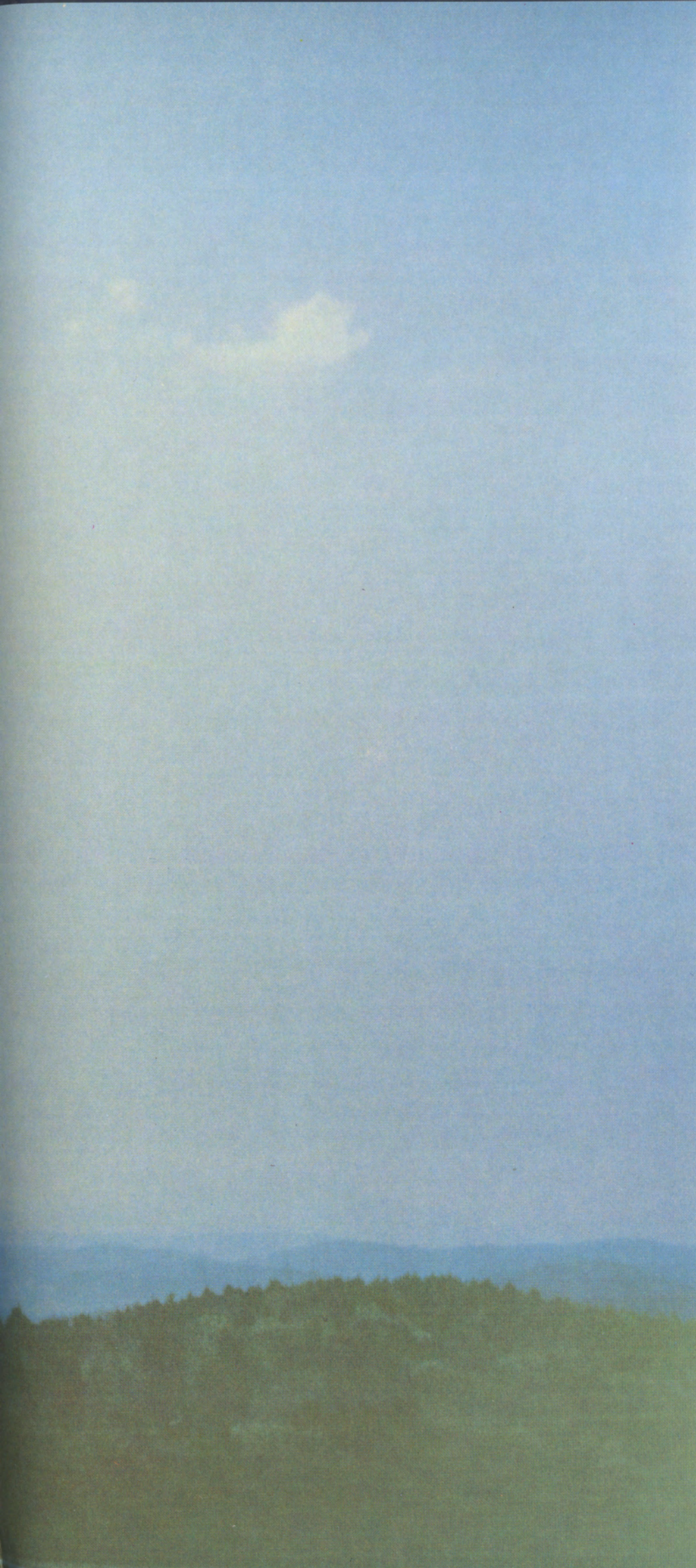


"A single second in the timeless, amounts to many million years in normal space."

PTAAH, Pleiadian Cosmonaut, 1975







It was from the Pleiades, "The Seven Sisters", that these cosmonauts came . . . describing their home planet Erra, the Andromeda Council governing our sector of the Universe, and the Union of Planets they belong to, stretching far out into the vastness of space, 127 billion people strong. Estimating themselves to be 3,000 years in advance of Earth, the Pleiadians told Eduard Meier that they are not superhuman . . . but men, like us, benefiting from greater time, and greater knowledge.

"We do not reach to an end of the universe, for such does not exist."

SEMJASE, Pleiadian Cosmonaut, 1975

Photographs above, and on preceding double page June 12, 1975, 10:38 hours Berg-Rumlikon near Thailingen, Switzerland Taken by Billy Meier as craft approached; 7 meter, variation type-2 craft. The Witness noted that besides moving in curved trajectories, the ship can and often does "jump" instantly from one place to another. Another peculiar thing he observed was a sort of pendulum swing during rapid ascent of the craft. It is erratic like the descent motions a coin dropped in water exhibits — except in an upward direction. Distance "blueing" by moisture suspended in the air is definitely visible in these pictures, clearly indicating a large object some distance from the camera. Two rolls of 36 exposures each were shot in this film series.

“Although terrestrial man may have taken his first step into space, this is still a question of primitive attempts even though he has been able to fly to your moon with missiles. He has still to reach space — because to achieve this end he needs a force (propulsion) that is able to produce a ‘hyperspace’ velocity, so that the tremendous distances are reduced to something navigable. Then space and time are overcome by non-space and non-time — that is, space and time are reduced almost to annihilation.

Through the mastering of this technology fractions of seconds are sufficient to accomplish light years (of your calculations) . . .”

SEMJASE, Pleiadian Cosmonaut, 1975





These startling meetings with visitors from the Pleiades star system began to occur less frequently in the fall of 1976. The daytime meetings, the photographs, and the remarkable nature of the events themselves were important personal experiences to the farmer, but the demands of his work and raising a family had to come first. Gradually, it became more convenient for both he, and the extraterrestrial visitors led by the cosmonaut named SEMJASE, to meet at various times during the night hours when the day's work had been completed and the children were in bed. At such times it was easier for Mr. Meier to react to the indications that another meeting was at hand.

"General public contacts are not in our own best interests at this time and besides, they would not convey a correct significance for the state of mind in which we now exist."

SEMJASE, Pleiadian Cosmonaut, 1975

"... On many occasions space travellers have visited your Earth from other stars (108 different civilizations at last count) sometimes from very distant systems, like ourselves. On occasion accidental contacts which are unique may take place with Earth people."

SEMJASE, Pleiadian Cosmonaut, 1975



"It now flew completely noiseless, and I could see the exact form: It was a disc formed craft with a similar top and base."

Eduard "Billy" Meier, 1975



Billy Meier's experiences have become the longest series of documented encounters ever recorded. By April 4th, 1978, he had a total of 105 meetings with the Pleiadian Cosmonauts, and after well over 130 contacts presently, these ongoing events continue to produce remarkable new photographs and a host of unparalleled evidence.

Over the years, no other extraterrestrial encounters have produced such numerous and varied forms of documentation recording the detail of what actually was happening. Physical, as well as startling audio and visual evidence was left most every time the Pleiadian Cosmonauts returned to one of the eight landing sites for further meetings with the Swiss farmer.

Having observed our progress for thousands of years, the Pleiadian visitors' observations and studies were detailed in these numerous unworldly conversations. Every social, technical, historical and spiritual subject imaginable was discussed in the process of answering the thousands of questions Mr. Meier had.

Billy Meier kept a careful log of notes on the contacts... times, places, dates, detailed conversations, comments, witnesses, and the important highlights underscored by the Pleiadians themselves. The physical meetings with the returning spacecraft and its occupants were occurring once or twice a month, and with each new meeting a stronger friendship and understanding developed with the Cosmonauts.

Being somewhat nordic-looking with few physical differences from our own form, he felt very comfortable. The farmer had no difficulty conversing with Semjase and the other alien crew members when they arrived, because they understood his questions and problems before he mentioned them. They were telepathic. But they also spoke to him in his native Swiss-German dialect with an unusual accent.

Semjase told Mr. Meier that they had long ago experienced the same difficult problems and decisions our world now faced and they had evolved approximately 30 centuries ahead of earth society in knowledge, social structure, and science, with the help of more advanced beings than themselves. Their purpose now focused upon creating an awareness that other intelligent life existed in the universe, both good and bad by our standards, human and non-human in form.

As the Pleiadians left many of these meetings, their craft were observed by numerous witnesses, astounded at the reality of the claimed events. These eye-opening experiences of others created needed support for a quiet Swiss farmer whose sanity was previously questioned at the mere mention of these encounters he was experiencing. But such was the nature of the events as first reported. As the encounters continued and attention on them increased, the quiet rural communities of Canton Zurich, Switzerland were forever disturbed by the historical proportions of experiences they could no longer ignore.

On many occasions, the comings and goings of these craft have been observed and even photographed by a number of other witnesses, many of whom are friends of Meier who, having previously doubted the reality of these fantastic events, had to see it for themselves. Over the years, at least seven different types of spacecraft have been seen over the Swiss valleys approaching or leaving the contacts with the Swiss farmer. Each type appears in some of the hundreds of photographs Mr. Meier has collected of his experiences. This photograph shows a variation type-2 craft, an earlier version seen 3 August 1975 which was said to be hundreds of years old.





The Experience Continues

29 March 1976 18:10 hours

SEMJASE's new 4th variation spacecraft makes its departure toward the south over Mt. Auruti. This version can navigate interstellar space and can operate interdimensionally. About 7 meters in diameter (21 ft.), this ship normally carries a crew of three.

"Within a short time I will get a new beamship, which you will be allowed to photograph closely, to get better pictures."

SEMJASE, Pleiadian Cosmonaut, 1975





During Meier's 4th contact, on February 15, 1975, the Pleiadian cosmonauts answered a question regarding the way in which their spacecraft travels here from the Pleiades. Their two different propulsion systems on the spacecraft allow the entire journey to be made in seven hours, with the help of sub-light speeds for atmospheric travel, and hyper-space drive systems for travel at many times the speed of light in space.

When asked for more detail the cosmonaut replied that some of earth's scientists were working in the proper direction, with some of our top scientists trying out a light emitting propulsion system (for speeds up to the speed of light) and a "tachyon" system which would enable us to travel many times the speed of light. "We use other names, but the principals are the same", the cosmonauts said.

At the time, these principles mentioned by the cosmonauts could not be generally found scientifically discussed in articles, texts, or books. Then, a full two years later, in a new book entitled "Interstellar Travel", John McVey, a distinguished astronomer, discussed these same propulsion principles. As far as could be determined, John McVey did not know of Eduard Meier, and Mr. Meier is still not familiar with McVey's book.

"We have yet to uncover or document any explainable method Mr. Meier could have had of acquiring these unusual facts, other than through the Contacts themselves as he describes."

*Colonel Wendelle C. Stevens
Chief Investigator, the Meier Case, 1977*

14 April, 1976, 16:15 hours

Location: Schmarbuel-Maiwinkle

Photograph left, craft moved over the valley from left to right, turned, and then (photograph right) accelerated suddenly towards camera as this photograph was snapped.



"Man should know that the God (force) is quite simply that of creation, and that man also, either coming from the higher spiritual spheres or being elevated to those spheres after numerous terrestrial lives, is subject to creation and respectively complimentary to it. The higher he soars, the greater becomes his power. However, one can never identify God separately from the creation because God itself is a part of it, with all the rest of the "Gods" who co-exist with it in various states of being, stages of instant celestial substance which are perfectly adapted to them."

SEMJASE, Pleiadian Cosmonaut, 1975

"A spiritually developed being, as a part of creation, acknowledges creation in all things, even the smallest microbe, and leading a creative life causes fears and doubts to vanish like rain before the sun."

By creative thinking man acquires knowledge and wisdom and a sense of unlimited strength which unbinds him from the limitations of convention and dogma.

Material life on Earth is only a passing event, a phenomenon vanishing after a time. However, before him and after him there continues to exist the creative presence of the universe."

SEMJASE, Pleiadian Cosmonaut, 1975



On the 14th of April, 1976, Billy made his way to a valley to the west of Bettswil anticipating the return of Semjase for another meeting late in the afternoon. He carried a camera and tape recorder with him. Unknown to him, the Swiss Army was on maneuvers to the west in the vicinity of Bettswil. What happened next is the first time in history that anything like it has been witnessed, tape recorded, and captured on film.

As Semjase's spacecraft approached up the valley preparing to land, the army field radar apparently picked up the spacecraft on their instruments and a Swiss Mirage jet fighter was vectored in to investigate.

The jet fighter came in from the west, made an unsuccessful pass in pursuit of the spacecraft, and the aerial combat maneuvers began. Billy snapped eleven photographs of the aerial events, and recorded the sounds as it happened. The jet fighter left the area after its 22nd unsuccessful attempt to pursue and contain the alien spacecraft.

"We extraterrestrial living forms have no authority yet to interfere by force with terrestrial concerns."

PTAAH, Pleiadian Cosmonaut, 1975



14 April 1976 16:11 hours

One in a series of eleven photographs in which a Swiss Mirage fighter is seen attacking the PLEIADIAN spacecraft. The fighter has just completed a pass through the valley and is turning around to continue pursuit of the spacecraft. This photograph was taken just as the spacecraft reappeared at a low altitude above the valley floor in the midst of defensive maneuvers. These are the first photographs ever seen of such an aerial event, in which aerial combat between a fighter and a UFO was captured on film.

This series of photographs has been thoroughly examined by computer. A closer view appears in the computer photo analysis section of this book.





29 March 1976 18:10 hours

Two series of photographs were taken, one at 18:10 hours, and the other at about 19:50 hours after a physical contact. Here, the craft approached from the southwest and hovered before landing. The tree is 52 yards away. The craft is hovering beyond over a small valley.

“As Tom and I were walking over the Hassenbol site . . . once more we were impressed by the seemingly impossible task of faking such a photograph. It was 52 yards to the tree in front of and just to the left of the hovering spacecraft as the reflection of the sun flashes off the right side.”

*Lee Elders, Investigator
Hassenbol, Switzerland, 1978*



These photographs, numbering in the hundreds, along with the scores of landing tracks, burned bushes, extra-terrestrial metal and crystal samples, 8mm motion picture film, taped sound recordings of these spacecraft in flight, and the over 3,000 pages of notes on Mr. Meier's phenomenal encounters, as well as the documented experiences and observations of over a dozen witnesses, are all evidence of the Swiss events that could awaken the sleeping giant in us all...the "giant" being the thought that other human life exists, more advanced and understanding than ourselves, and what changes in our own futures could communications with them bring? At no other time in our history has such a mountain of recorded evidence appeared.

29 March, 1976, 18:10 hours
Tree dimensions: 31 ft. tall
21 ft. diameter
Location: Hasenbol-Langenberg

"Close examination of the enhanced version of this photograph clearly shows the branches of the tree in front of the hovering spacecraft."

*Tom Welch, Investigator
Hasenbol, Switzerland
August 3, 1978*



29 March 1976 9:30 hours and 16:50 hours

Photographs on this page and facing page shows the PLEIADIAN Cosmonauts' new third variation spacecraft accompanied by two smaller, pilotless, remote-controlled ships that are limited to operation within a planet's atmosphere. Photograph above shows small remote craft not noticed in the larger photograph (far right) until found recently by investigators during detailed photo analysis.

(As with most all of the photographs, distances are too great for toss-in models, suspension lines or wires are out of the question, photo-trickery, mirror techniques, and paste-ups have been eliminated, as well as the many other forms of faking photographs, leaving the viewer to decide).





The Contactee
Eduard Billy Meier

The Chief Investigator
Col. Wendelle C. Stevens (Ret.)

2 April 1978
Location: Hinterschmidruti, Switzerland

The Investigation

In August, 1976, background events began to unfold in the form of a rather skeptical investigation into "Billy" Meier's unique and unprecedented experiences, initiated by experts in the field of UFO-related phenomena.

The most experienced of the unsuspecting experts drawn to the Meier case was an enigma in his own right. An expert in the field of aircraft technology, his participation in the peace negotiations in Tokyo six days prior to the end of World War II and the surrender of Japan... his later flights into and over communist China, and his consultations in the structural design of the Bolivian Air Force were a remarkable story within themselves. Historic events always appeared to be an integral part of Colonel Wendelle C. Stevens' life, as had been the in-depth investigation of the UFO phenomena around the world. Retired from the United States Air Force Air Technical Intelligence Center in 1963, the Colonel has earned the reputation on an international level since as being one of the top UFO investigators worldwide, a fact reflecting his successful scientific approach in hundreds of such cases. Little did he know that the Swiss case would prove to be his most exhausting, demanding challenge in his 30 years of UFO research and investigation.

In the fall of 1976, the evidence began to mount, pouring in at an alarming rate to Stevens' Arizona residence... months before he had received the first Meier photographs, courtesy of a co-hort investigator in Europe. In the beginning, like everyone else that had come into contact with these precedent setting photographs, he felt that they were too good; after all, no one had ever witnessed such quality in UFO photography before.

But then he decided to find out for himself... his first trip into the world's most neutral country provided Stevens with the opportunity to observe and obtain statements from not only Meier but many witnesses themselves... surprisingly, Meier was now into his 89th contact. As Stevens returned to his residence in the United States, he was still amazed by his observations... something had happened there, something undefinable, but stupendous, leaving its indelible mark of change... difference. He had never seen anything quite like it in his years of investigating other contactee cases... Now it was necessary to bring in science... perhaps the scientists and their stoic computers could shed more light on this incredible case.

Before "science" was brought in, Stevens needed to open a few doors, and wanted an objective opinion by a close friend who, like Wendelle, had seen more UFO-related evidence than anyone else in that field. Mr. Jim Lorenzen, International Director of A.P.R.O. (Aerial Phenomena Research Organization) located in Tucson, Arizona. Jim headed up the world's oldest and largest, and one of the most credible UFO-related investigative agencies... APRO was a no-nonsense organization and he knew that he could count on Jim for help!



In early 1978, it became necessary for Col. Stevens to contact a close friend who had also participated in a number of historic investigations. Lee Elders, International Director of Intercep, a prominent counter-measure security firm based in Phoenix, Arizona, was brought in to expand the investigation and its security level. Mr. Elders not only had a feel for the unusual, but he was a professional in using science and psychology to obtain the optimum in investigative results.

In the weeks that followed, Tom Welch of Intercep, Brit Nilsson-Elders, and a myriad of computer, laser, and photographic specialists were brought together by Stevens and Elders to conduct a most exhaustive and painstakingly detailed investigation. It became one of the most intense scientific probes ever undertaken in the history of the UFO contact phenomena. The remarkable photographs of Billy Meier were first on the list, and the lab facilities of selected specialists in various fields became the setting for a continuing step by step drama.

In early April of 1978, while science was at work, Stevens, and the investigative team comprised of Elders, Nilsson-Elders, and Welch flew to Switzerland and the contact sites for new information and a more in-depth perspective of the events. A high priority was the testing and investigation of the witnesses, and particularly, comparison photographs and investigation of the sites themselves.

As the investigative team traveled to the various contact sites, comparing the photographs to the panorama of the real location, all were impressed by the difficulty of the terrain... and thus the difficulty... actually the impossibility of faking the photographs with the aid of models of a large nature... The computers, months earlier, had already ruled out paste-ups, rear projection and a variety of fraudulent ways to deceive. Site after site was photographed with one of the members of the team standing directly under the location where the craft had hovered for the photographic sessions... The computer, months earlier, had shown that Semjase's spacecraft was approximately 21 feet in diameter... the site analysis bore this out. Distance measurements were taken. Trees and other objects seen in the photographs were sized and measured. But in all cases of comparison, nothing suspicious or unusual was found.



3 August, 1975, 17:40 hours

Location: Ober-Sadelegg

The spacecraft moved further left, to the north, crossed a depression and moved away along a stand of large pines to its right. The taller of those large pines to the right in the picture is 200 yards away, and the far tree-line is 350 yards away.

The ship moved north to beyond the far tree-line and then turned west and flew along that line to the end of those trees.



Incredible events followed in the next few days. Shoe boxes filled with amazing photographs surfaced from dusty hiding places. A stream of remarkable, witnessed accounts poured out from willing observers. Recorded interviews of witnesses for psychological stress evaluation (PSE) continued in unshakable fashion. And Brit Nilsson-Elders found the children more than willing to discuss their "friends" from the sky, without prompting from their parents or a hint of any form of memorization. The investigative team became victims of the friendly people who were neither too kind or too cold to them, but simply respected the purpose for which they were there.

As the evidence mounted with "first ever" tapes of recorded spacecraft sounds which Meier had taped the summer before... the team, no matter how hard they fought it inside... quickly realized that they were now in the midst of something awesome, something incredible that defied the imagination. This could very well be the first authentic, evidence supported case of ongoing extra-terrestrial contact with Earth humanity... the first touchable indication of extra-terrestrial life itself.



August, 1978 Switzerland

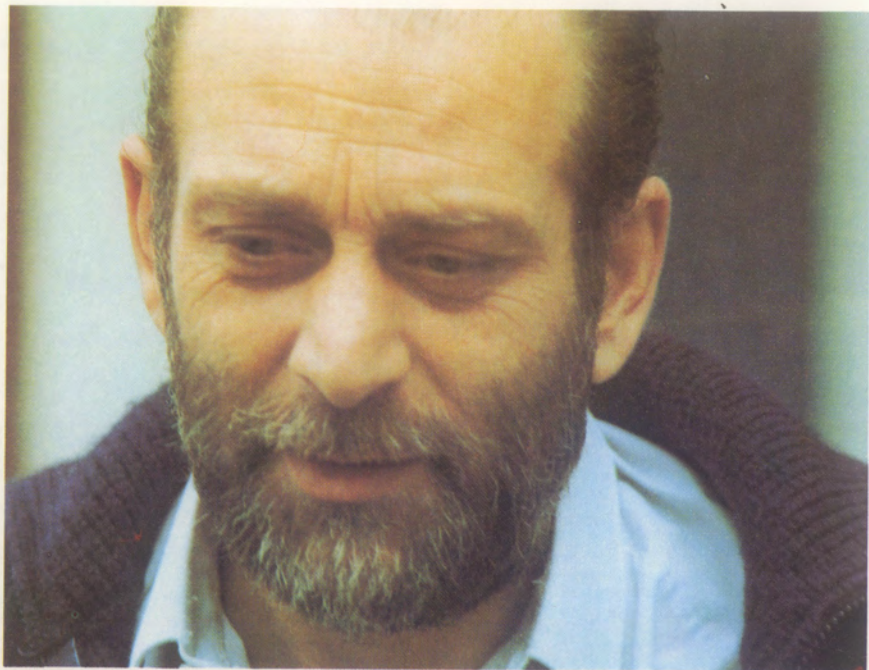
Tom Welch stands on the exact site where two years earlier (29 March, 1976) photographs were taken (large photo left) before and after a contact took place with visitors from the PLEIADES star system.

“Now I became absolutely convinced that the photographs taken at the landing sites that we visited were certainly not faked. There was no way that models could have been used, utilizing string, wire or cable . . . because the foreground fell away at the Ober-Sadelegg site quite sharply to a distance of the trees below, 152 and 198 yards away. No model could have been thrown that great distance and none could have been launched from out of the frame into the scene because of the same distance . . . the object according to the computer and the witnesses had to be approximately 20 feet in diameter or more . . . I had myself photographed by Lee Elders from the contact site and by Tom Welch from the photographer’s point of view. Models are definitely out of the question!”

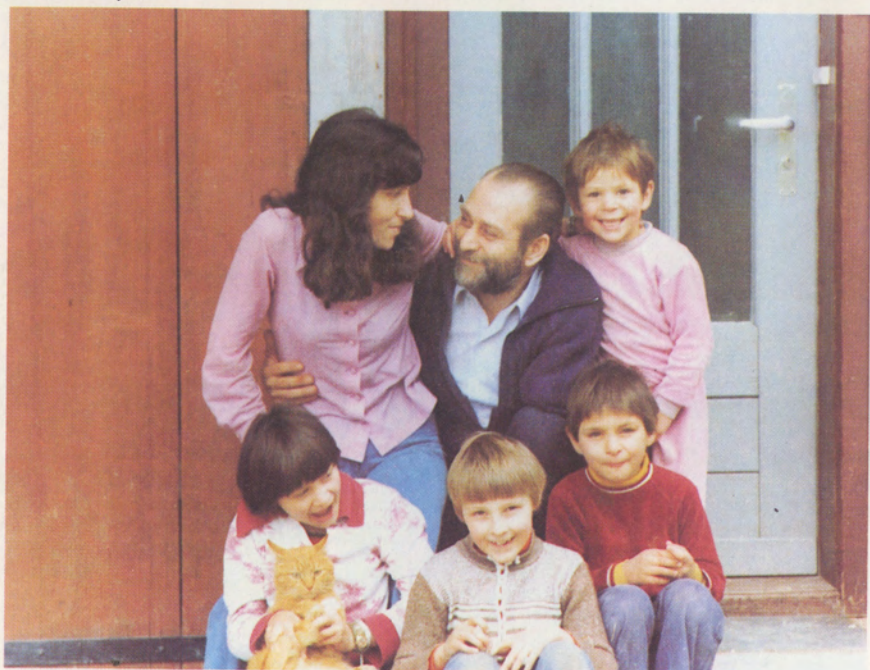
Wendelle C. Stevens, Chief Investigator
of the Meier contact case — Ober-Sadellegg
April, 1978



August, 1978 Switzerland
Billy Meier and investigators Lee Elders and Tom Welch at site of numerous contacts. Large photo right taken here 3 August, 1975. Location: Ober-Sadelegg.



Eduard Billy Meier



The Meier family (center child is daughter of another witness)



Meier farm house



Mr. Meier and witnesses gather in kitchen for Swiss television interview (photos above and right)

The Witnesses



THE WITNESSES

Colonel Stevens and the investigative team were confronted with a substantial number of local witnesses who had personally observed these remarkable events... some had even photographed the Pleiadian spacecraft approaching and leaving the contact sites. Their phenomenal observations and experiences were further documented by detailed interrogations.

While testimony and depositions were taken, the investigative team went one step farther to expose any potential embellishment or memorization in the witnesses' accounts. With the help of the Psychology Department of the University of Arizona, a precise list of questions was drawn up for the witnesses to answer. These answers were tape recorded for Lie Detection Testing by special computers standing by in northern California. Called Psychological Stress Evaluation, these special computer voice analysis systems offered the most intricate, accurate, and sophisticated form of PSE and Lie Detection Testing available.

These witnessed accounts were remarkably detailed and would demand a substantial imagination to create individually. But none of the investigators sensed any hint of "creativity". In fact, the sincerity felt from the witnesses, as they answered the questions directly, was disarming. It was no surprise that these witnesses passed the PSE tests with flying colors.



The Witnesses



The Investigators — Lee Elders, Brit Nilsson-Elders, and Col. Stevens.



Col. Stevens and Tom Welch interview Billy Meier.



The Investigators interview the witnesses.



Of all the remnants of the ongoing events available for examination, the photographs seemed to recreate the events most vividly. Second by second, in series, the photographs detailed the movements of the spacecraft in almost movie-like form during each event. The investigative team spent hours matching up these photographs to create the accurate panorama of each experience, then crosschecked every claimed detail for inconsistencies. In the hours of study and comparing notes, witness accounts, light and weather conditions, and the myriad of other factors, everything corresponded exactly, presenting one of the most detailed pictures imaginable of each event as it happened.







"It is becoming increasingly difficult to remain objective in the face of the accumulating evidence, and we are impelled to a conclusion that the experience actually happened, that the disc shaped craft photographed is really a UFO and that the case is legitimate. We are continuing the investigation into this on-going affair, and we intend to present the facts to the people and we invite anyone to disprove them any way they can."

*Col. Wendelle C. Stevens
Chief Investigator, 1978*

Each form of evidence supporting Mr. Meier's experiences was impressive. To each of the Investigators, one form of evidence or another stood out above the others in its impact. Each had different opinions. But the fact that there were many different types of evidence supporting the experiences, each difficult to dispute, and the presence of literally hundreds of photographs in series which were each startling in their own way, overwhelmed the team.

As they returned home with this startling evidence intact, they focused upon solving the difficulties inherent in finding unbiased scientists who would be willing to examine and study what was now in their possession. Security and confidentiality were essential if an accurate examination was to be made.

Each element of evidence had to be analyzed separately for its own merits or shortcomings, without the preliminary influence or prejudice that general knowledge of the Swiss events could cause. There was much to examine, and although the investigators would return to Switzerland again and again as new events developed, study and analysis of the incredible evidence and information they acquired became the top priority.

Photograph left

28 March, 1976, 16:50 hours

Location: Bachtelhornli-Unterbachtel

A 3,000 percent blow-up of the craft in this photograph was made for analysis (and appears on the next page) as the computers analyzed this photograph.

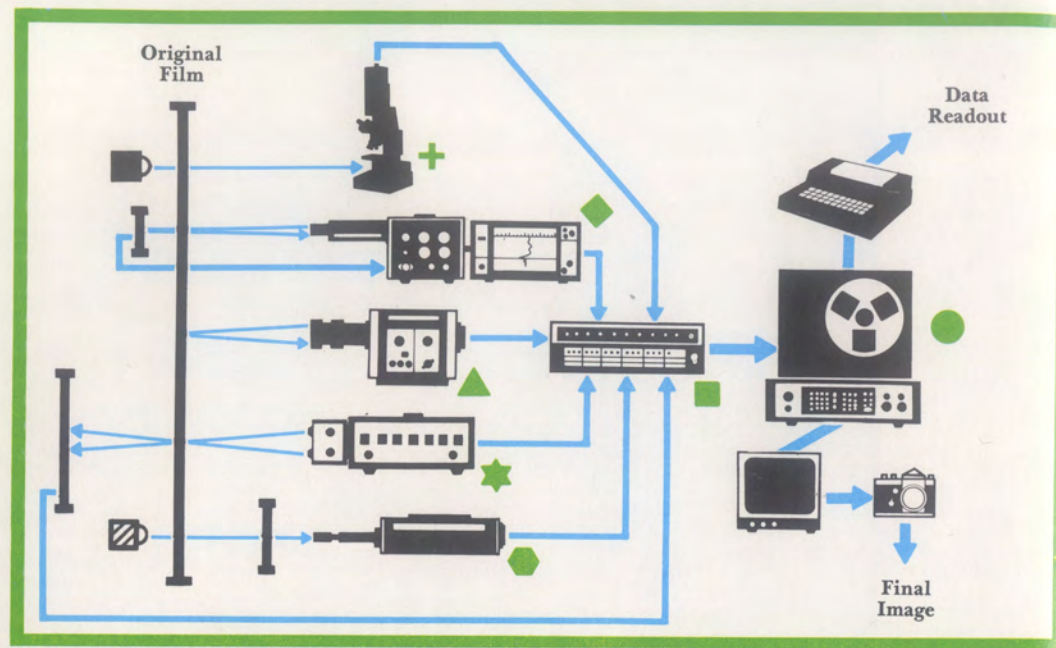
COMPUTER AND LASER PHOTO EXAMINATION

Because of the incredible nature of the Meier photographs, an exhaustive series of Photogrammetric tests were designed by consultants to the investigative team whose specialties centered on optical engineering, special effects, computer analysis, and laser scanning techniques. The objective was to analyze these photographs more thoroughly than any other UFO-type photographs had ever been analyzed before, utilizing additional, highly advanced procedures and technology drawn from sophisticated aerospace and nuclear medicine applications.

Using the most advanced graphics computer systems and electronic equipment available, the specialists began testing for trick photography, models, strings, and special dark room techniques. Applying electron microscopes, laser scanning, and computer functions, the film grain itself was examined for any distortion resulting from double exposure, lamination, or projection methods. The testing became intense, with three photographs (from the fighter sequence taken 14 April 1976, and from the valley sequence taken 28 March 1976 seen on previous pages; and one from the log-pile sequence taken 3 August 1975 seen two pages following) drawing the center of attention. For consistent comparison, photographs showing variation type-4 craft were focused upon (type-4 craft from fighter sequence, 14 April 1976, and from valley sequence, 28 March 1976, seen here).

Further testing targeted on lighting angles, shadows, and edge focus of all objects in each photograph searching for paste-ups, overlays, and other forms of fakery, as well as data for calculations of the size and distance away of each object. The computers would indicate any inconsistency, in addition to providing a three dimensional, topographical view of the objects in question. And image enhancement and edge enhancement was done to improve the qualities of the picture to reveal any suspicious lines, wires, or other aspects that would throw the photographs under doubt. Even more tests were employed to detect other-than-visible-spectrum light or energy captured within the film crystals.

Additional, more evolved testing and study of the photographs actively continues today, but as seen here in photographs of some of the tests, and as noted in the conclusions on a following page, everyone was in for a surprise.

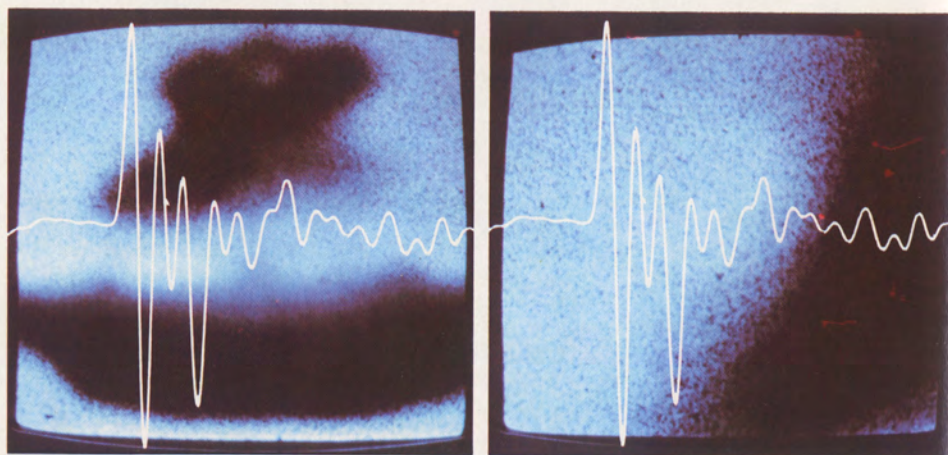


COMPUTER FUNCTIONS

1. **Histogram**, defines Light intensity Values, Z scale
2. **Edge Identification**, Clearly shows all lines (edges) in pictures
3. **Edge Enhancement**, improves visual quality of edges in pictures
4. **Spatial Filtering**, separates different light values (frequency)
5. **Contour Identification**, topographic (3-D) map of object
6. **Focus Index**, identifies edges as function of distance
7. **Contrast Enhancement**, improves visual quality of hazy picture
8. **Image Enhancement**, improves edges and finer detail of object
9. **Geometry Function**, calculates size, distance, aspect ratio of objects

LABORATORY EQUIPMENT

- + **Electron Microscope**, Powerful close-up microscope
- ◆ **Microdensitometer**, Measures density of film grain
- ★ **Interferometer**, Measures Waveform/Frequency of Film Crystals (as lenses)
- **Infraredometer**, Measures Infrared Light not visible to naked eye
- ▲ **Vidicon Tube**, Converts Picture to Electronic Image
- **Digitizer**, Converts Vidicon Image to 300,000 computer cells called pixels
- **Image Process Computer**, Defines, Analyzes, Measures elements of Photo



Film grain analysis by laser scanning microdensitometer — shows consistent homogeneous patterns, no overlapping film grains; eliminates overlays, multiple exposures, multiple printings, and dark room techniques.

+ ◆ 1.



3,000 percent blow-up of type-4 craft from original picture; note ornamental-looking protrusions; rim of craft appears to be moving.

+ ◆ ▲ ■ 1. 3. 7. 8.



Thermogram — color density separations — Low frequencies properties of light/time of day are correct; light values on ground are reflected in craft bottom; eliminates double exposure and paste-ups.

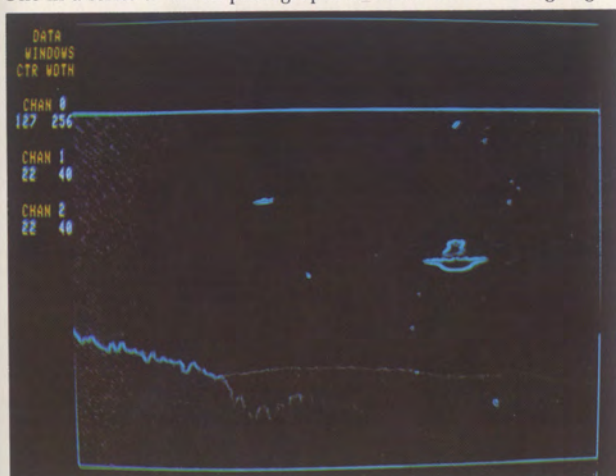
◆ ■ ● 1. 4.



Thermogram — color density separations — High frequencies properties of light/time of day are correct; light values on ground are reflected in craft bottom; eliminates double exposure and paste-ups.

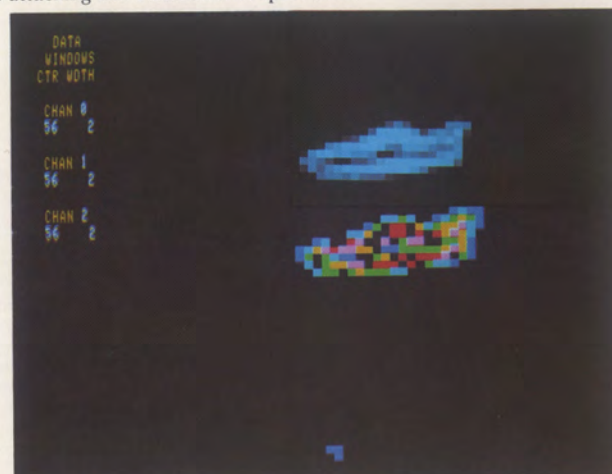
◆ ■ ● 1. 4.

One in a series of eleven photographs in which a Swiss Mirage fighter is seen attacking the PLEIADIAN spacecraft.



Edge Identification — fighter attack photograph; eliminates strings, wires, paste-ups, small models; defines edges for distance/focus and craft/object size calculations, solid object.

◆ ▲ ■ 1. 2. 6. 9.



Edge Identification of jet — eliminates strings, wires, paste-ups, small models due to computer size/distance calculations.

Density Average — object is 3-dimensional due to variable colors.

+ ◆ ▲ ■ 1. 2. 4. 6. 9.

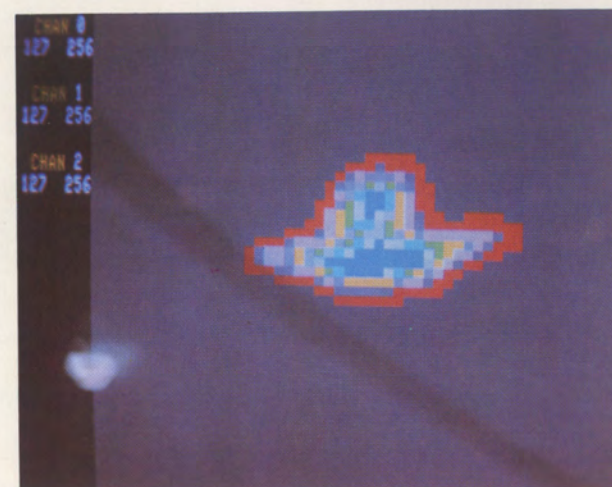


Z-scale Contour of infrared copy print with band pass filtering — topographical view based upon illumination; blue is profile edge of wing closest to camera; shows rear edge (red) slightly larger than front edge due to blurr factor, proving movement of jet; jet exhaust visible, amplified by infrared. ◆ ▲ ■ ● 1. 4. 5.



Edge Identification — fighter and spacecraft; eliminates strings, wires, paste-ups, small models due to computer size/distance calculations.

+ ◆ ▲ ■ 1. 2. 3. 6.



Density Average — object is 3-dimensional due to variable colors.

+ ▲ ■ 1. 3. 4.



Z-scale Contour of infrared copy print with band pass filtering — topographical view based upon illumination; shows supernormal light distortion properties — note purple field flowing into or coming off of craft edge. No combustion engine exhaust visible.

◆ ▲ ■ ● 1. 4. 5.

PHOTOGRAMMETRIC ANALYSIS CONCLUSIONS

The film was examined microscopically and processed by a laser scanning Microdensitometer. Analysis of the film grain (density contour plots) showed no overlapping film crystals, eliminating the possibility of dark room techniques or film overlays, and indicating a consistent, homogeneous grain pattern normally expected of an authentic photograph.

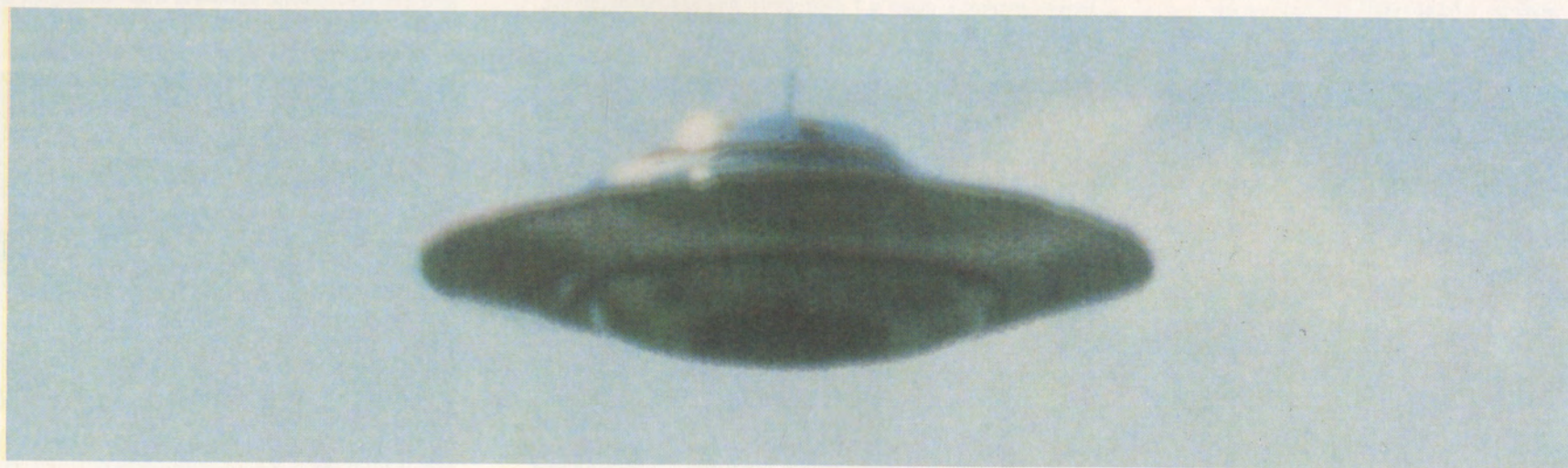
The negatives, transparencies, prints, and color separations were carefully examined for photo paste-up, models at short range, suspended on a string or tossed / propelled into the field of view, and improper focus, distance, or size relationships. Edge enhancement proved that there is no string, filament, or other support holding the craft. Close-up examination of the craft edges and those of other reference objects in the photographs always showed that the focus, distance, and size relationships are proper, eliminating the possibility of small models at short range, and paste-up techniques.

Examination of the location of the shadows and highlights in the photographs verifies that the craft and surrounding landscape were shot under precisely the same conditions of light. The craft was noted to have an extremely smooth, reflective metallic surface, and the light values of the landscape were seen to be reflected in the bottom of the craft. Additionally, Z-scale Contour and Z-scale Density average tests confirmed the craft to be a large, three dimensional object.

In short, nothing was found to indicate trick photography, models, or other suspicious techniques. Nothing was found to indicate a hoax. Distance and size measurements are proper in relation to location measurements taken by the investigators, and the "reported" size of the craft is appropriate to the calculations done by the computers.

While this surprised many of the specialists who were expecting to find "the string" or some other "technique", more was to come. While experimenting with special emission scanning techniques, unusual "energy" fields were found in a photograph only surrounding the area of the craft. The light frequencies of these fields were above the visible spectrum, and remained in the photograph after the visible spectrum of light had been cancelled out. As this is still under further investigation, yet another test revealed supernormal light distortion properties around the craft in a photograph under certain ranges of the light spectrum.

Such things have never been found before, and while they do not affect the validity of the photographs, such findings excited the desire to learn more through further advanced testing and study of these photographs. Interestingly, the majority of specialists involved were unaware of the other forms of evidence supporting Billy Meier's experiences when these preliminary tests supported the validity of the photographs.



3 August 1975, 17:20 hours Distance to log pile: 198 yards
Distance to tree line: 280 yards Location: Ober-Sadelegg
One of the first photographs analyzed by computer photogrammetric methods. Nothing was found to indicate a hoax. An entire series of photographs was shot here as the craft continued to move towards the photographer and to the left over the trees out of the picture.







8mm MOVIE FOOTAGE

During his many meetings with the Pleiadians, Mr. Meier has had the opportunity to film seven different segments of 8mm movie footage. This footage is one of the most precedent-setting forms of evidence supporting Mr. Meier's experiences.

Taken during various seasons over the years, these segments were acquired for the most part by automatic operation of the camera after Billy had set it up on its tripod. Since he was handicapped with the loss of his left arm in a 1963 bus accident, automatic operation of the borrowed camera alleviated the obvious problems he faced, and left him free to take still pictures (as seen here) of the scene as Semjase's spacecraft approached.

The first of seven segments of film taken during the first year of these events, shows the earlier (1975, variation type-2) craft of Semjase's hovering, then circling a tree several times before moving off. Incredibly, the tree top is seen to move violently from the force of the craft as it passes over.

In the second segment, cars moving along the road in both directions are plainly visible behind and below the hovering and moving spacecraft. And during the third segment of film, the craft literally disappears at one point, then reappears after a short time. Examination of this film portion shows that no tampering with or splicing of the film is apparent.

All of the footage is just as remarkable. In over thirty years, less than a dozen movie segments of UFO-type craft have been seen by the public at large. Such movie footage is considered quite rare. By comparison, these seven stunning segments of movie film are providing a wealth of evidence for examination in connection with the results of the on-site investigations.



This scanning electron microscope photograph at 2,000 diameters shows the remarkably efficient conductivity in this metallic specimen. This photograph was made without the gold foil covering ordinarily needed for improved conductivity to prevent electron fogging of the image. Because of the unprecedented, high conductivity of the metal specimen itself, we are able to clearly view not only the crystals but even the X-ray images of other faces of these crystals in this specimen.



METAL SAMPLES ANALYSIS

"The next morning we checked on Meier physically to see if he was up and around. We were told that he was still sleeping and that he had a contact during the night (his 105th), and that he had a surprise for us. We couldn't wait to get up the hill to see what happened. . . finally, at the end of the day when everyone had left, he said, 'I have a surprise for you.' He then produced a small package of amber crystals that he said . . . Quetzal had delivered for us. The package also contained 4 metal, 1 biological and 9 mineral and crystal specimens for us to have examined."

*Col. Wendelle C. Stevens
Chief Investigator, 1978*

Upon their return home, the investigators provided scientists with a small specimen of one of four states of spacecraft metal for confidential study and analysis. At first, broader scope metallurgical analyses were accomplished, and then more in-depth, highly sophisticated examination began. These detailed analyses continue today. However, from the beginning, unique qualities in the metal samples were detected causing the scientists involved to note that they had never seen anything like it before.

Preliminary analysis revealed unique properties, rare transition elements, and an unusually high level of purity in the state of the metal that, in reference to our present technology, was not immediately explainable. The metal specimen's general characteristics seemed to indicate a non-electrolytic, cold fusion synthesis process not generally known to earth technology. The analysis continues as greater study will be needed before final conclusions can be made.

This picture at 500 diameters shows a micro-machined face on one side of the metal specimen that could only have been produced by something exceeding the finest lasers in a most sophisticated technology.





LANDING TRACKS

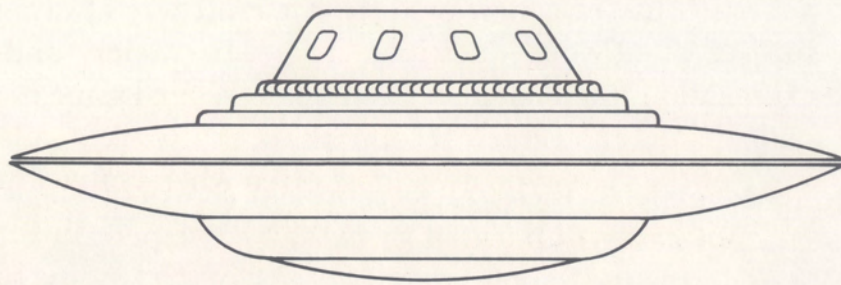
LANDING TRACKS

The more than 130 meetings with the Pleiadian cosmonauts have taken place in various moist, grassy meadows that dot the forested Swiss countryside in the Canton Zurich region. Consequently, a substantial number of physical traces remain of these events including burned bushes, broken branches and twigs, trails of identifiable footprints, and most uniquely, landing tracks left by the various extraterrestrial spacecraft. The majority of these landing marks present an intriguing form of evidence in the fact that, even seasons later, they could still be seen.

Semjase's seven meter ships (21 ft. diameter), types one through four, land on tripod legs that are extended from the lower surface of the craft. These legs have circular dish-shaped shoes that leave a round, swirled-down pattern in the grass. The grass is swirled-down in a counter-clockwise direction, and does not rise again, although new grass does grow up in the swirled-down area. The new grass does not grow in the same manner as that of the surrounding grass. In the print areas left by the landing gear of these spacecraft, the new grass is not as lush, and does not grow as tall, or as dense as the rest of the grass in the surrounding meadow, leaving traces that are visible many months later.

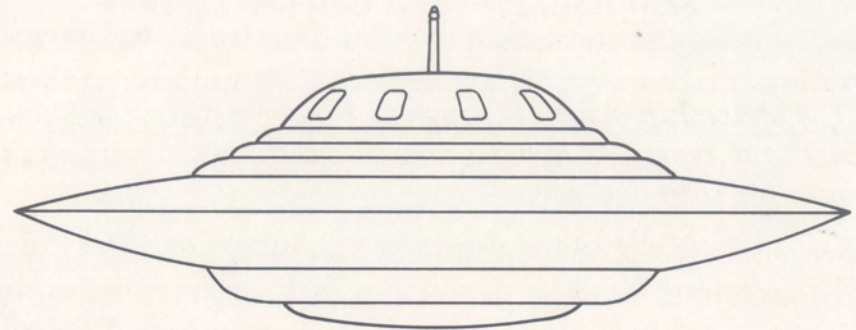
The pilotless, remote-controlled spacecraft seen accompanying Semjase's seven meter craft on several occasions are approximately three and a half, and five meters in diameter and land on the three hemispherical structures spaced 120 degrees apart on their underside. When landed, they do not rest heavily on these round protrusions but they also leave the grass and vegetation below them swirled-down in a counter-clockwise direction. The same unusual growth characteristics of new grass appearing in the landing tracks occur as well.

To the experts, these tracks represent a curious phenomena not easily duplicated or explained, especially when considering the remote terrain of some of the landing sites. Scores of these landing tracks were photographed by witnesses when they were fresh, and later at various times during the changing seasons, creating a record for study through time-lapse photography. They represent another form of evidence supporting the physical level of Mr. Meier's experiences...remaining physical traces that might be expected of such unworldly physical events.



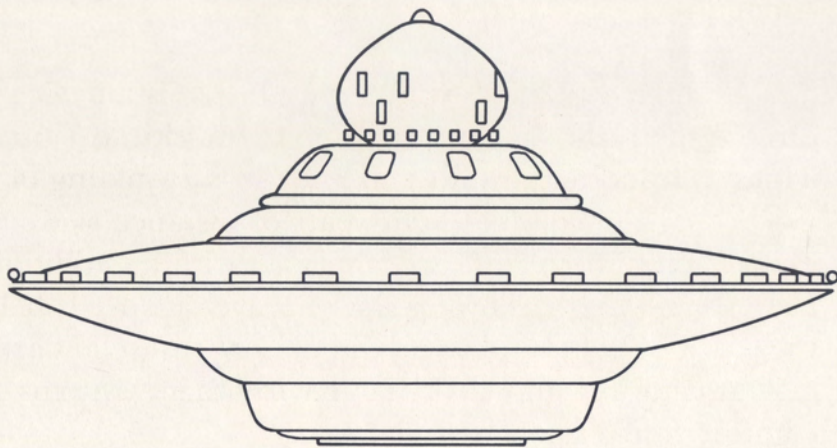
Variation Type-1 Craft

Seven meter reconnaissance ship — (21 ft. diameter) carries crew of three, and has interplanetary capability of travel. Claimed to be several hundred years old and was replaced because of radiation leakage problem.



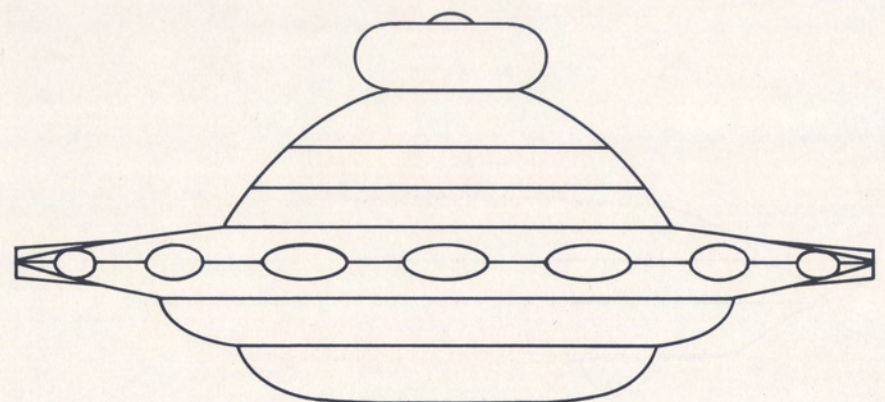
Variation Type-2 Craft

Seven meter reconnaissance ship — (21 ft. diameter) carries crew of three, and has interplanetary capability of travel.



Variation Type-3 Craft

Seven meter reconnaissance ship — (21 ft. diameter) carries crew of three, and has interplanetary capability of travel.



Variation Type-4 Craft

Seven meter reconnaissance ship — (21 ft. diameter) carries crew of three, has time travel capability and interplanetary capability of travel.

"A spacecraft has to be equipped with two different propulsion systems, one for the normal propulsion and another one for the hyper-space propulsion method. It is only when time and space have ceased to exist that we are capable of traveling through light years of distance in a matter of seconds."

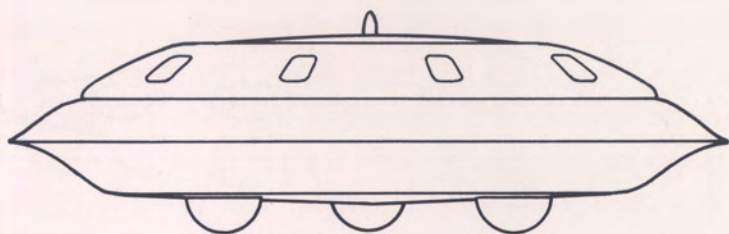
SEMJASE, Pleiadian Cosmonaut, 1975

"If a spaceship breaks through the barrier of light velocity without reaching hyper-space instantly, a catastrophe is due for ship and crew."

SEMJASE, Pleiadian Cosmonaut, 1976

"Our spaceships are protected by a screen of energy which automatically rejects any kind of resistance and every bit of matter. This protective screen is, in fact, identical with the specific gravitational field which we build up around our ships. With this protective screen we are able to neutralize the gravitational field effect of any planet we want to approach."

SEMJASE, Pleiadian Cosmonaut, 1976



Variation Type-5 Craft

Telemeter Discs for Reconnaissance

Remote-controlled, 3½ and 5 meter versions, place for one, travel limited to planetary atmosphere.

SPACECRAFT (PHOTOGRAPHED)

During the years, a number of different types of Pleiadian spacecraft have been seen in connection with these remarkable experiences. Each has been photographed at one time or another and appears among the numerous photographs associated with the witnessed events. Each craft has a different purpose or represents a "newer, more modern version" according to the extraterrestrial visitors. Semjase's use of a new or different craft was always the subject of obvious questions from Mr. Meier, and in explanation, the Pleiadian Cosmonaut related some of the basic details about their reconnaissance ships, particularly those of the class-type used most often when contact activities with residents of a planet took place.

The visitors from the Pleiades have many different types or classes of spacecraft, some of which are capable of interplanetary and interdimensional space travel. Most of the Pleiades spacecraft operating around Earth belong to a specific category of small reconnaissance ships with interplanetary capabilities. From 5 to 22.5 meters (17 to 76 feet) in diameter, they are able to fly from planet to planet if desired, but also operate within the planetary atmospheres. They provide room for one to seven persons, depending upon their size. The various craft used most frequently by Semjase and her crew are reconnaissance ships approximately 7 meters in diameter, having just enough room for a crew of three.

Among their technical equipment aboard is a device for dimensional and hyperdimensional transitions (jumps) which transports the ship and crew in a twinkling of an eye through uncounted light years of distance as we understand it. These craft are equipped with an additional propulsion system allowing slower travel at speeds below the speed of light in physical dimensions, as well as artificial gravitation and artificial environment systems for comfort and ease of travel.

Another type of craft, seen with the 7 meter reconnaissance ships, are the remote-controlled Telemeter Discs, varying in size from 3 to 5 meters in diameter. This class of scout ships is used to gather data and monitor, providing information to the 'mother' ship controlling each disc, or storing information for retrieval at a later date. Equipped with extensive sensing devices, the larger versions also have space aboard for one occupant as a passenger or pilot.

The Pleiadian Connection/Egypt

"We, too, are still far removed from perfection and have to evolve constantly, just like yourselves. We are neither superior nor super-human, nor are we missionaries... We feel duty bound to the citizens of Earth, because our forebearers were their forebearers..."

*The Pleiadian Cosmonaut, SEMJASE
February 8, 1975*

From ancient manuscripts and cuneiforms to legends and mythology, no stars are more talked about than the Pleiades... nor are any other stars considered more influential to Man's Destiny. From the time of Ahmose I, Egyptian Pharaoh at the time of David, King of Judea, numerous cuneiform tablets were addressed to the Pleiades... expressing a budding civilization's thoughts to its mentors. Egypt provided only a small part of the almost magical love and respect our world has shed on the Pleiadian Constellation and its visiting inhabitants. With November, the "Pleiade-month", early peoples began their year... and on the day of these stars' midnight culmination, November 17, no petition was ever presented in vain to the ancient Kings of Persia.

THE INVESTIGATORS

Lee Elders, Brit Nilsson-Elders, and Tom Welch began to experience the sensations Schliemann must have felt when he unearthed the legendary city of Troy, succeeding because he had dared believe in and follow the "mythology" of Homer's Iliad. It has been proven in the past that, when dealing with large gaps of time in history, many times the truth becomes transposed into legend. Such became the challenge of this team and after only a few weeks a wealth of history began to reveal itself under a new light. The first doors to open for the investigators were over 45 centuries old.

They found that this case could no longer be measured by the normal UFO criteria... but now entered a new category all its own... Identified Flying Objects. For the first time, a case continually presented known factors, not unknown... and now it presented historical connections as well.

THE TEMPLE OF HATHOR

In the old spiritual city of Denderah, along the Nile River, lies the Temple of Hathor... dedicated to the Goddess of Love and the Stars of Hathor... the Pleiades. In this Temple a marvel of Man's beginning can be found; An eons-old carving on the ceiling, intricate in design. A star clock, first carved in early B.C., celebrates the Pleiades, the vastly greater sun around which our solar system revolves, taking 25,827.5 years to complete one revolution. Called the Precession of the Equinoxes, this clock of stone has survived the ages.

"The pagan Arabs, according to Hafiz, fixed here (The Pleiades) the seat of immortality, as did the Berbers, or Kabyles, of Northern Africa, and widely separated from them, the Dyaks of Borneo; all thinking them to be the central point of the Universe.

Star Names, Their Lore and Their Meanings, Allen

THE GREAT PYRAMID OF CHEOPS

The Great Pyramid was riddled with Pleiadian Mystery. Its seven mystical chambers, suggested Professor Charles Piazzi, commemorate the seven visible stars of the Pleiades, for some unknown but important reason. Amazingly, the figured time of the rotation of our solar system around the Pleiades (25,827.5 years) was worked into four places in the massive stone structure with mathematical precision. The most notable of these connections is seen surrounding the King's Chamber, walled in rare red granite deep inside the pyramid. Standing in the King's Chamber, on the fiftieth tier of stones, amidst its eery pink glow, the Egyptians symbolically stood among the planets of the Pleiades and their power.

The two base diagonals of Cheops are 12,913.75 pyramidal inches. Multiplying this figure by two equals 25,827.5, the exact number for the precession of the equinoxes. Science would bear out more . . . much more, as they found unique passageways leading out of the heart of the great structure that were directed toward the Pleiades when they passed nearest the zenith. The Great Pyramid was so

precisely oriented to the stars of Hathor that in 2170 B.C., when the Pleiades were on the meridian at exactly midnight, on the very first day of spring, they could be seen sparkling through the south passageway.

THE GREAT PYRAMID OF CHEOPS, EGYPT



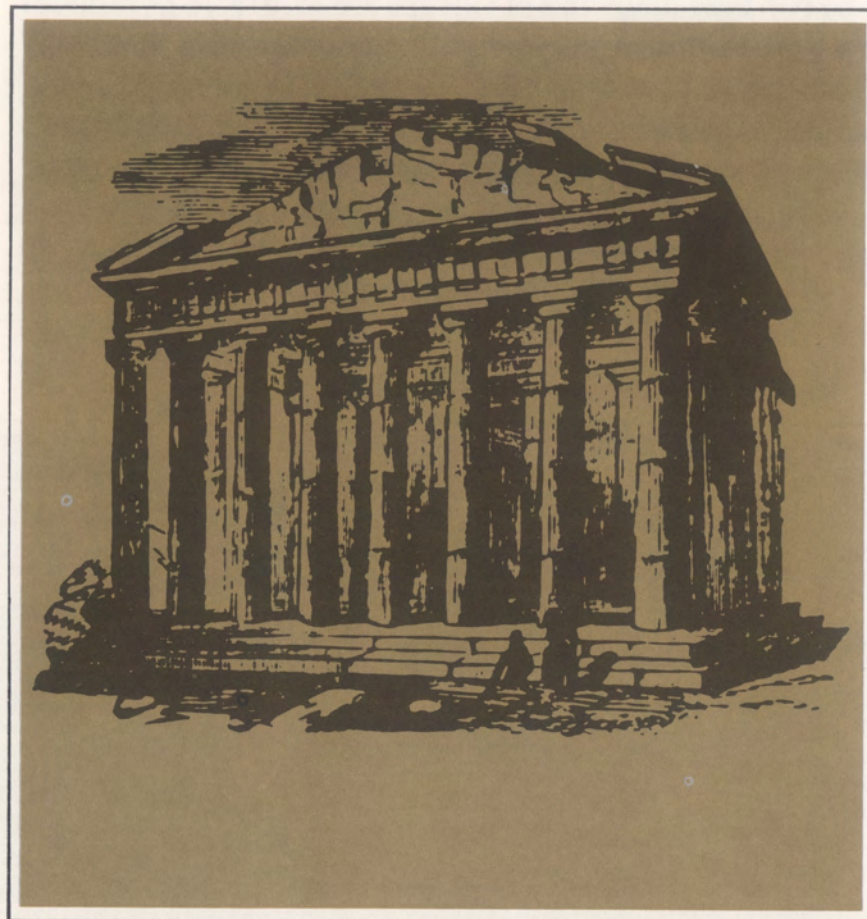
The Pleiadian Connection/Greece

The Greeks of prehistoric times had no written records to their ancestry and relied heavily on the traditions and beliefs passed from generation to generation. Each city and tribe had their own protecting hero or demigod, which were believed to have come to Greece from far away lands or their homes in the stars. Many of the ancient Greek myths relate stories about the lives and adventures of these great divinities; one such tale states that Orion bragged to the other heavenly beings that no man or animal could be his match. His strong boasting excited the anger of the God Juno, who sent a scorpion to kill Orion with a single sting on the foot. Is it a stretched coincidence that the Pleiades, at certain angles in the night sky, take on the form of a scorpion? The Pleiades were so important to the Greek civilization that at least six temples were built, wholly oriented towards these stars and their corresponding positions when rising and setting. From temples such as these, the stars of the "Gods" were watched.

"The earliest Greeks, like primitive peoples all over the world in far Antiquity, worshipped the Spacemen as Sky Gods descending as Divine Kings to teach the arts and crafts of civilization to aspiring humanity. The Celestials mastered a wondrous science, some Gods were believed to control thunder, lightning, winds, storms, seas and the potent, everpresent forces of Nature. Temples were erected on hills as dwelling places of the Gods, race-memories perhaps of the secluded abodes of the Space-Kings in ancient days."

W. Raymond Drake

Gods and Spacemen in Greece and Rome



THE PARTHENON, GREECE

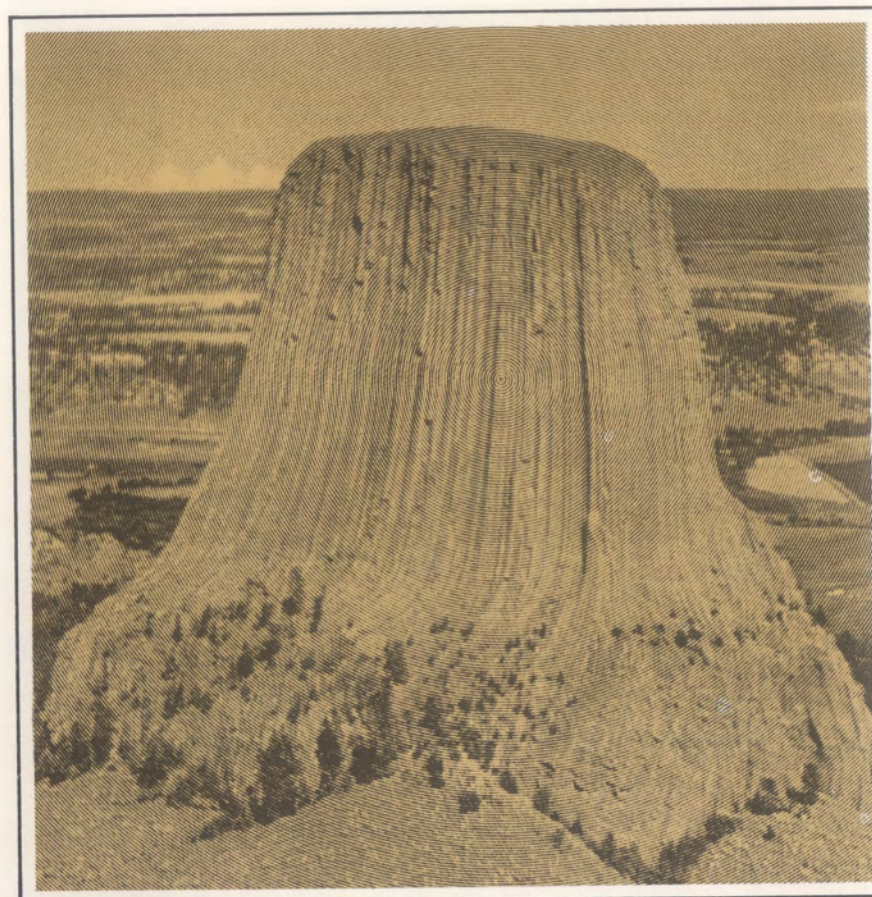
"Grecian Temples were oriented to the Pleiades, or to their Lucida; those of Athene on the Acropolis of different dates, corresponding to their different positions when rising. These were the Temple of 1530 B.C., The Hecatompedon of 1150 B.C. the great Parthenon, finished on the same site 438 B.C. The Temple of Bacchus at Athens of 1030 B.C. looked toward their setting, as did the Asclepeion at Epidaurus of 1275 B.C. and the Temple of Sunium of 845 B.C. At some unknown date, perhaps contemporaneous with these Grecian structures, they were pictured in the new world on the walls of Palenque Temple upon a blue background, and certainly were a well-known object in other parts of Mexico, for Cortez heard there, in 1519, a very ancient tradition of the destruction of the world in some past age at their midnight culmination."

*Introducing the constellations,
Robert H. Baker*

The Pleiadian Connection/North America

"In American Indian legend we find the Pleiades are connected with the Mateo Tepe or Devil's Tower, that curious and mysterious impressive rock formation which rises like a colossal petrified tree-stump to a height of 1,300 feet above the plains of Northeastern Wyoming. According to the lore of the Kiowa, the Tower was raised by the Great Spirit to protect seven Indian maidens who were pursued by giant bears; the maidens were afterward placed in the sky as the Pleiades cluster, and the marks of the bear's claws may be seen in the vertical striations on the sides of the Tower unto this day. The Cheyenne had a similar legend."

*Burnham's Celestial Handbook
Volume 3, by Robert Burnham Jr.*



DEVIL'S TOWER, WYOMING



GREAT PYRAMID OF THE SUN, MEXICO

At the sacred site of Teotihuacan, some 28 miles north of Mexico City, we find that the west face of the Great Pyramid of the Sun is oriented to the setting of the Pleiades, and that 11 of the west-running streets of the city point to the same spot on the horizon. These structures, are far more ancient than either Aztec or Toltec culture.

In ancient Aztec and Maya tradition the midnight culmination of the Pleiades was an event of great and ominous significance, particularly at intervals of 52 years when the two pre-Columbian time-counts (the sacred and the secular calendars) once again come into coincidence.

In the Mayan jungle city called Paleque, a temple was reported to have a beautiful mural on its ceiling depicting the brilliant blue sky holding the constellation of stars known as the Pleiades within it. The inscription with it read "Deity, taking pity on the children of Earth, sent one of the divine sons to live among them and instruct them . . ."

The Pleiadian Connection/South America

Summerian, Assyrian, and Babylonian cuneiform tells us the story . . . the same story that takes the investigation half a world away to the majestic Andes mountains and the steamy Amazon Basin of South America. How did the pre-Inca peoples know what the others knew so well? It is amazing! Amidst a collage of modern cities, old conquistador villages teetering at the edge of mountainous valleys, and primitive, hut strewn indian communities hidden in the rain forests of the Amazon, the same religious legends have been passed from generation to generation. . . The pre-Inca peoples *knew that the stars were inhabited*, and that the "Gods" came down to them from the constellation of the Pleiades, changing their lives memorably for the better.

Such knowledge is remarkably widespread across the South American Continent. Even the Abipones Tribe of the Brazilian Amazon circle their protective jungle campfires and discuss *The Pleiades* with pride . . . after all, according to the "old ones", *they are the source of their Ancestors!*

Pre-Inca religions and cultures reveal that much of the South American civilizations was based on the belief that their forefathers came from the stars and that these extraterrestrials taught the Incas how to use fire, as well as how to plant and harvest crops. In return for the greater knowledge that was imparted to them from their friends from the stars, the Incas built temples and constructed ceremonies to worship their mentors.

In describing a great Inca temple in Peru, De La Vega in his "The Inca's", pages 71 to 116, stated, "*The room nearest that of the Moon was devoted to Venus, to the Pleiades and to all the other stars. Venus was honored as the sun's page, who accompanies him on his way, now following him, now preceding him. The Indians considered the other stars as servants of the Moon, and this was why they were represented near her. The constellation of the Pleiades was particularly revered.*"

MACHU PICHU, PERU



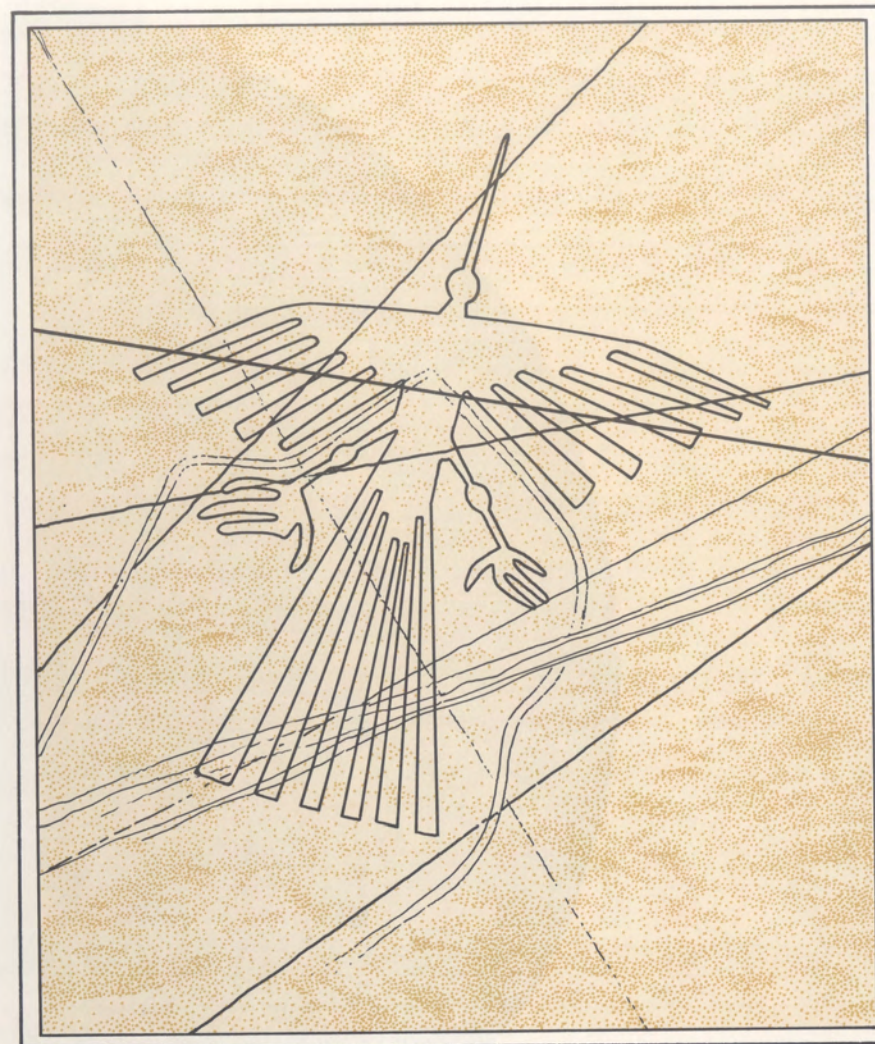
The residents of all of South America were not alone. Even though the Pleiades were *honored everywhere* in ancient Peru as "*The Arbiters of Human Destiny*" ... we find that "The Seven Sisters" are also revered in the Carribean Islands. The Pleiades are considered the "*location of the Creator of the Universe*", "*Where God Lives*", "*The exact Center of Heaven*", and the "*Location of God's House*" by the Cunas, as well as other tribes scattered throughout this part of our world.

The Cunas say that the Pleiades are the soul of God. In secrets of the Cuna Earth Mother, by Clyde Keeler, we find the following;

"It seems as though there is a constant struggle going on in the sky between the people of light and goodness, and the people of darkness and evil. Ikwaniptippi, in describing certain celestial bodies, referred to this battle. He spoke of the Pleiades as seven heroes who are arrowmakers who prepare fiery shafts for the battle. At other times, the Pleiades are the soul of God or where God lives..."

"The Calina Carib myth runs more or less as follows: The universe has its source in Amana, a virgin mother and water goddess who has no navel (i.e. was never born), a beautiful woman whose body ends in a serpent. She is the essence of time, has borne all things, can adopt any shape, dwells in the waters of the heavens and exercises her power from the Pleiades."

Pre-Columbian American Religions — Walter Krickenberg, 1968



THE NAZCA PLAINS, PERU

In a new book, "Pathways to the Gods — The Mystery of the Andes Lines", we find, on pages 58 and 59 a map of the Nazca Valley floor showing many of the long lines that run for miles over broken terrain in perfectly straight formation. Tony Morrison, the author, calls the great rectangle, beginning with the tail of the figure of the Thunderbird, The Plaza of the Pleiades because it is oriented directly to the rising of the Pleiades at the estimated times of construction. Other lines are oriented to the setting of the Pleiades.

Harper and Row, 1978



THE DISC OF PHAISTOS

"An archeological bronze medallion in the museum of Heraklion in Greece, called "The Disc of Phaistos" (17th Century B.C.), shows, engraved in relief, in spiral form, from the center out, a story of a celestial visitation by beings who arrived in a disc-shaped craft from the sky. The seven dots enclosed in a circle that is repeated many times is believed to represent the Pleiades."

Wendell C. Stevens

Note saucer-type figure
above, third row down from
the top edge.

"The seven-dot single quote symbol, according to this theory, can hardly represent anything other than the cluster of the Pleiades."

*Burnham's Celestial Handbook,
Vol. III, pg. 1868*

Acknowledgement

On behalf of myself and my associates, Lee Elders, Tom Welch, Brit Nilsson-Elders and the principal witness in this case, Billy Meier, I wish to thank the many eminent scientists, well known and highly respected in their various disciplines, some of whom are leaders in their professions and hold the highest academic credentials; and some of whom are administrative and department heads in their organizations — including government research laboratories — who have given the evidence presented to them on this case the most careful and sincere examination possible with the latest state-of-the-art scientific equipment available, and have advised us on how to proceed.

In addition, our thanks go to De Anza Systems, Inc., manufacturers of the remarkable state-of-the-art computer graphics systems utilized to better illustrate some of the test procedures; and to the authors and publishers whose various works became the sources of much correlating research.

We want to thank also, the many new acquaintances we have made in the course of this investigation, for their contribution to the overall effort, and especially those new friends who have worked so hard with us in setting up this book.

Without these people this book would not exist.

Col. Wendelle C. Stevens
Chief Investigator
The Meier Case, 1979

Epilogue

As Volume I goes to print, Eduard "Billy" Meier's experiences with extraterrestrials continue. In order to bring this new information and evidence to the public, GENESIS III PRODUCTIONS, LTD. is preparing UFO... CONTACT FROM THE PLEIADES, Volume II... More exciting, never-before-seen photographs, additional results and observations from ongoing analysis... specifically designed for this case by the scientific community, further insight into the Pleiadians and their messages, plus a few startling details not yet publically known.

THE INVESTIGATION CONTINUES...

All materials for this Photo-Journal have been collected and studied in confidence and never before released, including:

- ☆ *The first documented photographs of IDENTIFIED EXTRATERRESTRIAL SPACECRAFT.*
- ☆ *More than a dozen color photographs enlarged to a full foot in size . . . some up to two feet.*
- ☆ *The clearest, sharpest color photographs ever seen of UFOs.*
- ☆ *Actual quotes from the ALIENS who come from the Star constellation known to us as THE PLEIADES.*
- ☆ *Information on the PLEIADES and the PLEIADIANS.*
- ☆ *Scientific documentation.*
- ☆ *Photographs of the Pleidian spacecraft metal samples, and their documentation.*
- ☆ *Photographs of the witnesses, the investigators and the contact sites.*
- ☆ *Plus much, much more.*