



Director's Update Brief

Tuesday

**02 JUN 2009 1100 EDT
Day 45**

The Week of IPRs



Situation Awareness 02 JUN 2009



- Other Public Health Events

- Influenza H5N1 Humans in Egypt (New): One confirmed human case on 1 June 2009, 77th confirmed case in Egypt with 27 deaths (CFP=35%)

(GDD Ops Center Daily Report 1 June 2009)

- Severe Weather

- California, Oregon (2 June 09): Severe rain and thunderstorm activity from Northern CA and OR to the Great Basin.

(FEMA Sitrep 2 June 2009)

- NOAA forecasting *near-normal* hurricane season likely this year

(NOAA FHC)

- FEMA Joint Field Office: 20 Field Offices are supporting 30 Major Disaster Declarations and 9 Emergency Declarations

(FEMA HQ)



Key Events Novel Influenza A (H1N1) 02 JUN 2009



- Novel Influenza A (H1N1) Declarations
 - WHO: Pandemic Phase 5 (29 Apr 1600 EDT)
 - USG: Public Health Emergency declared (26 Apr 2009)
 - HHS: Downgraded to Phase 1 – Awareness (9 May 2009)
- **US Cases: As of 02 JUN 2009 0100 EDT (all states reporting cases)**

	Cases	Hosp	Deaths
US TOTAL Cases INCL DC	10,673	716	17
US TOTAL States Affected INCL DC	51	39	7
US Territories			
PR			
II	6		

- **International Cases: 17,410 confirmed cases in 62 countries**
 - 14 new countries with confirmed cases:
 - Europe:* Czech Republic, Cyprus, Estonia, Hungary, Romania, Slovakia
 - Americas:* Bahamas, Bolivia, Dominican Republic, Jamaica, Paraguay, Uruguay, Venezuela
 - Asia:* Vietnam
- **Deployments: 11 deployed**



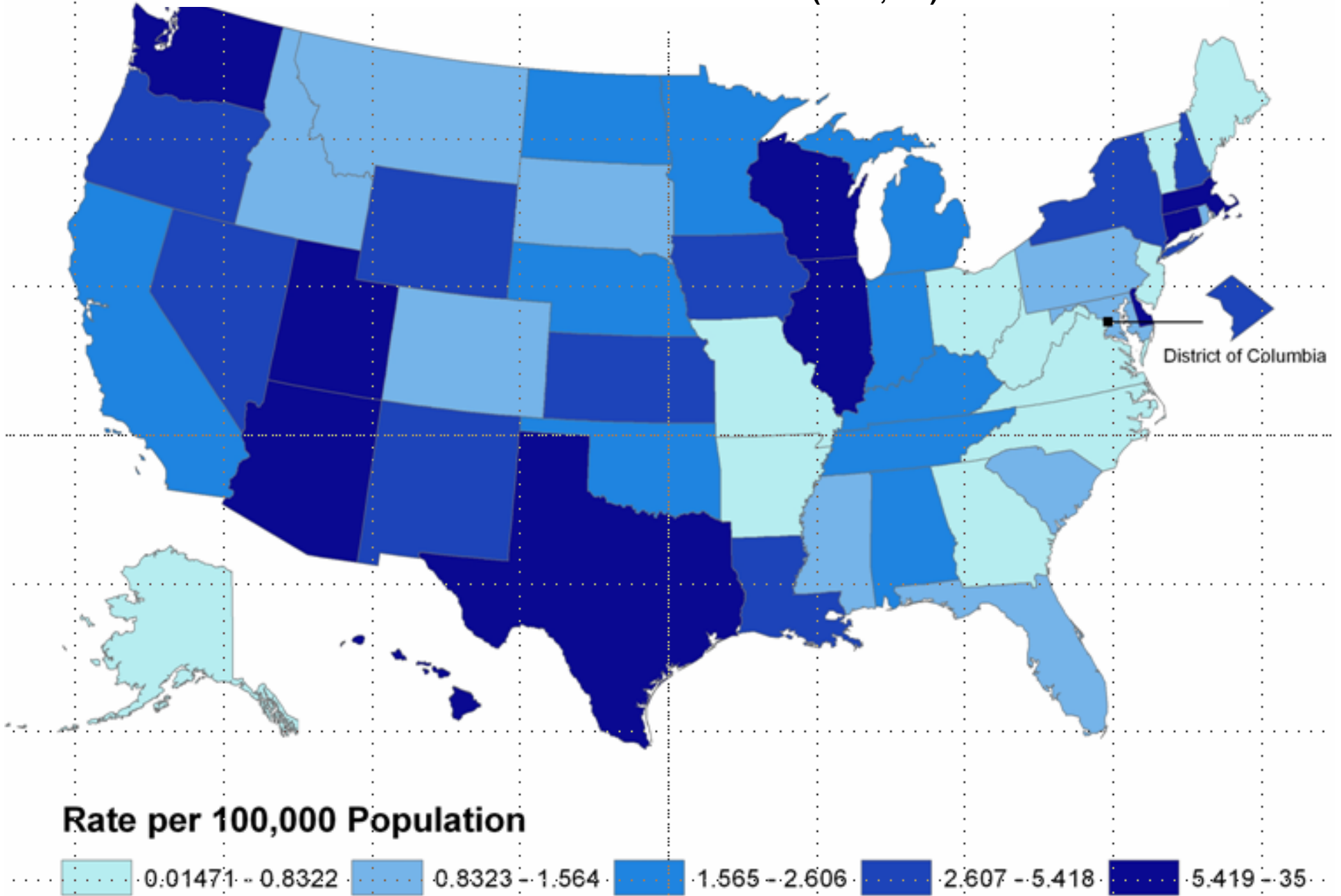
Epidemiology/Surveillance

Descriptive Statistics of Novel Influenza A (H1N1) Cases Reported to CDC by States-As of 02 JUN 2009 1100 EDT (n=10,679)



- Gender: 51% male, 49% female*
- Secondary attack rate in household contacts:
 - ARI—19%
 - ILI—12%
- Generation time:
 - ARI—2.0-3.1 days
 - ILI—2.4-3.1 days
- Hospitalizations: 716 (6.7%)
- Deaths: 17 (0.16%) in 7 states:

Epidemiology/Surveillance
Number of Novel Influenza A (H1N1) Cases Reported to CDC by State
As of 02 JUN 2009 1100 EDT (n=10,679)

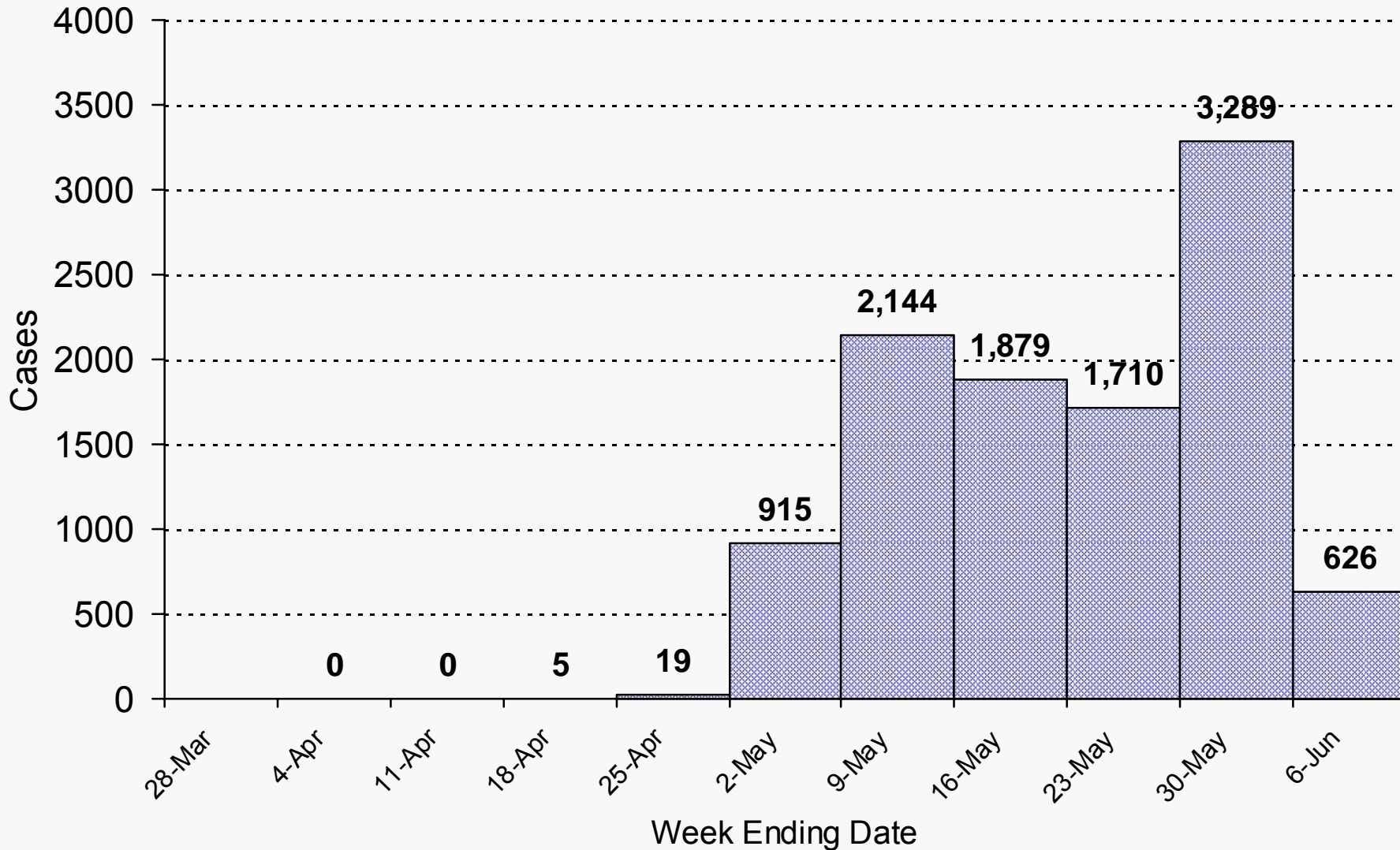




Epidemiology/Surveillance

Confirmed and Probable Novel Influenza A (H1N1) Cases by Report Date

As of 02 JUN 2009 1100 EDT (n=10,587) (Weekly*)

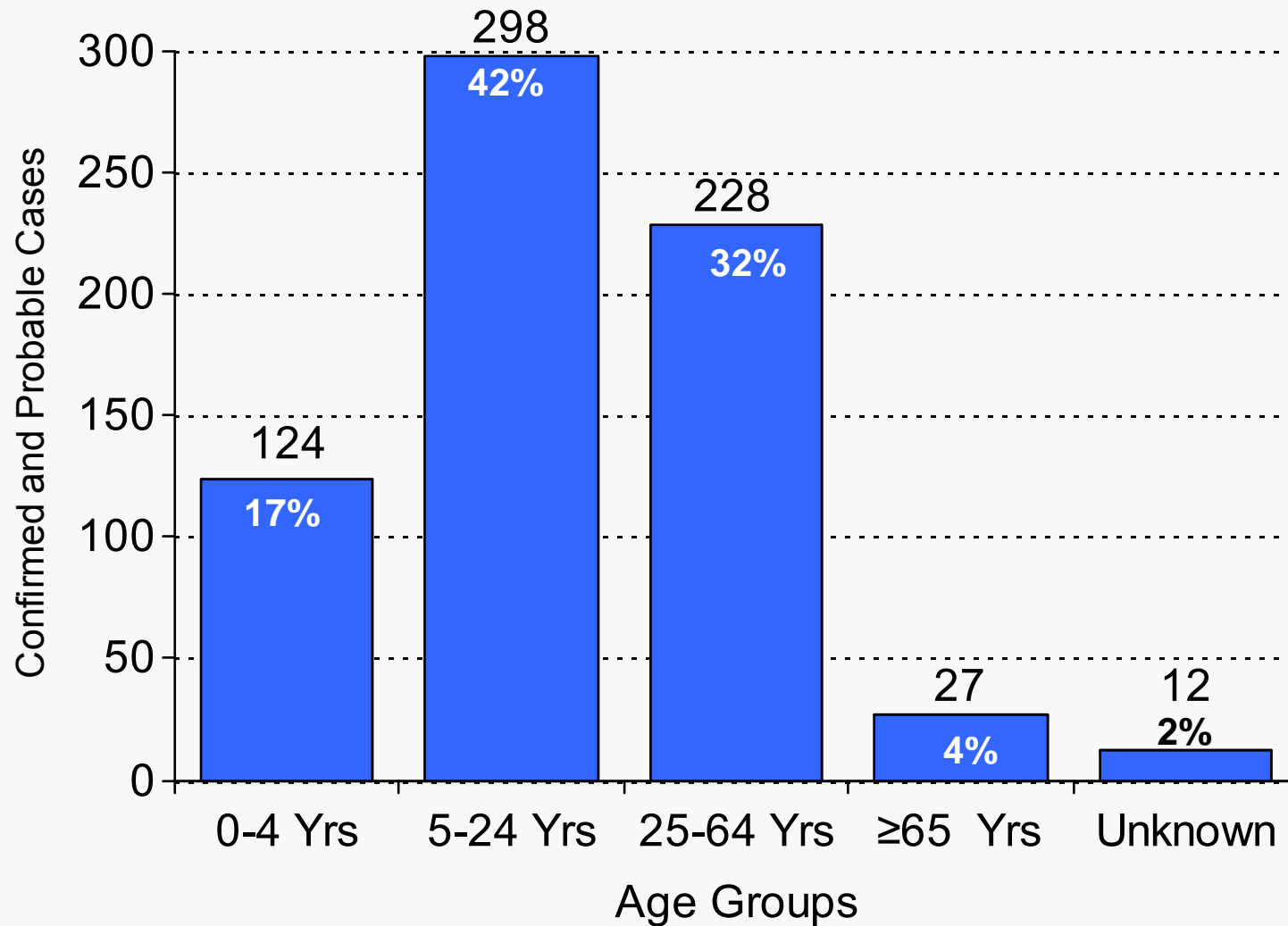


*Data for week ending 06 JUN 2009 include reports submitted between 5/31/2009 0001 EDT and 5/31/2009 1159 EDT



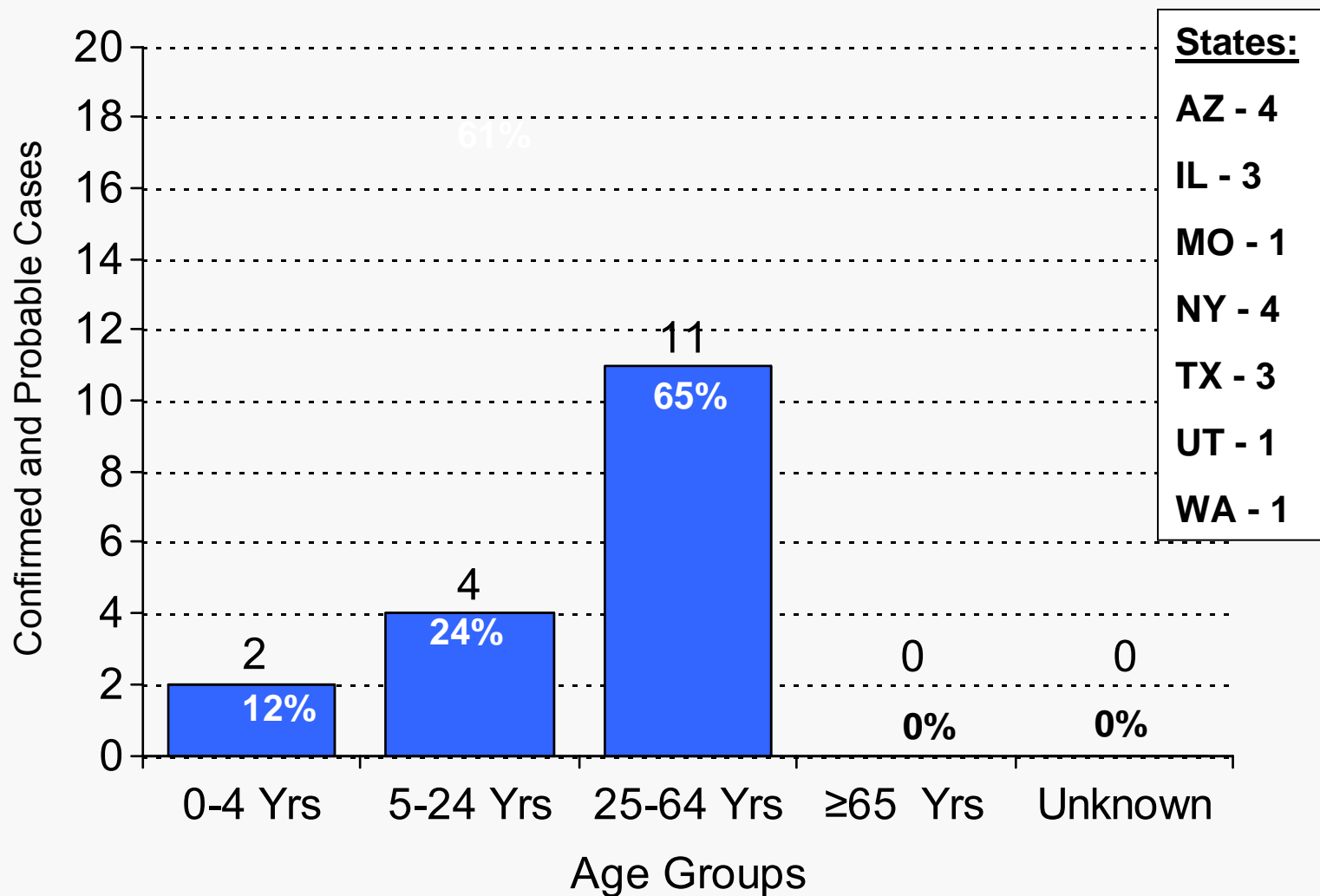
Epidemiology/Surveillance

Confirmed and Probable Novel Influenza A (H1N1) Hospitalizations by Age Data reported as of 02 JUN 2009 1100 EDT (n=716)





Confirmed and Probable Novel Influenza A (H1N1) Deaths by Age Data Reported as of 02 JUN 2009 1100 EDT (n=17)



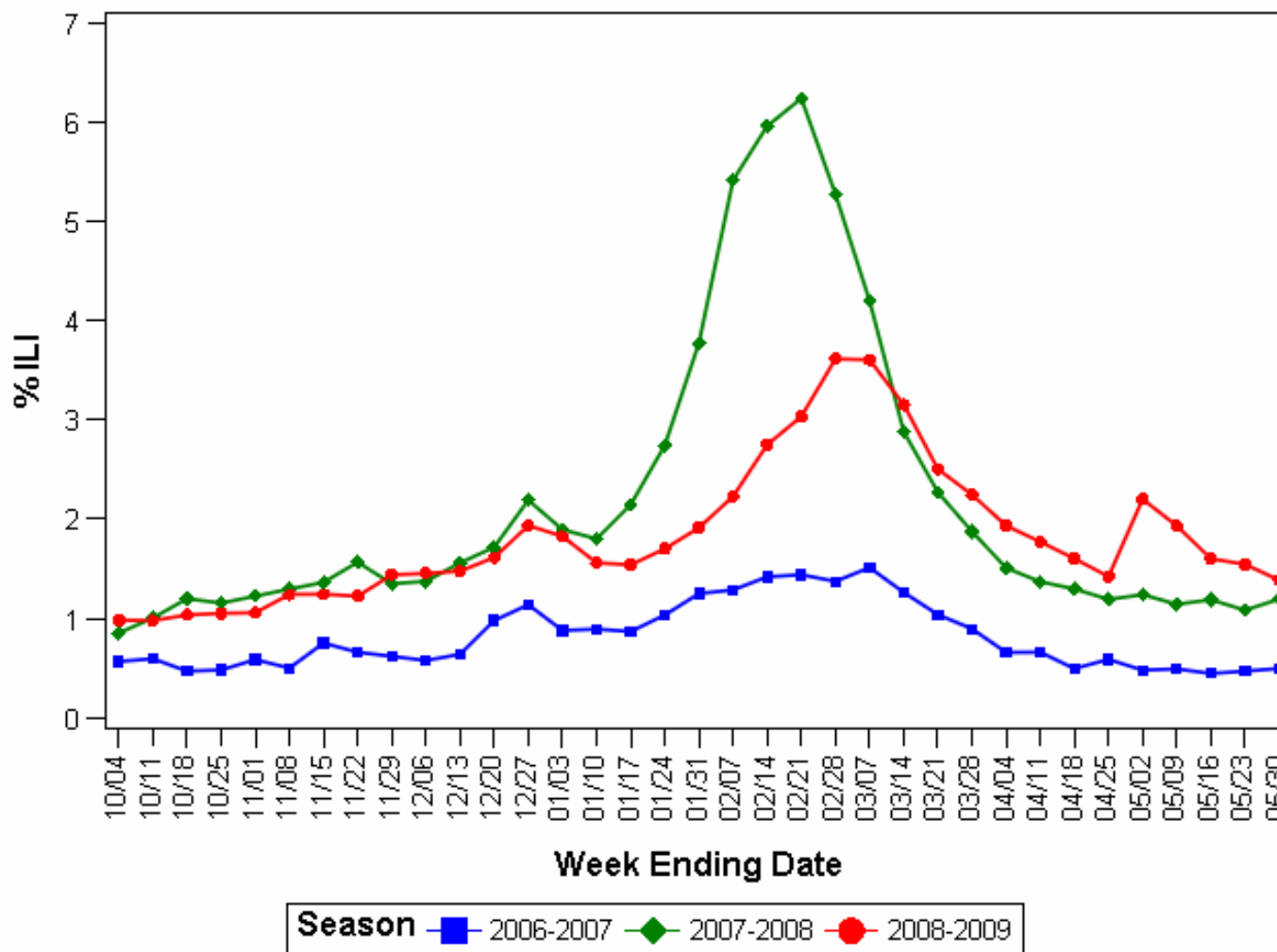


Epidemiology/Surveillance

Percentage of Visits for ILI by Final Diagnosis Reported by BioSense Emergency Departments 10/07/2006 to 05/30/2009: U.S.



Data Source=ED Final Diagnosis





Epidemiology/Surveillance
Novel Influenza A (H1N1) - 02 JUN 2009
Surveillance Systems



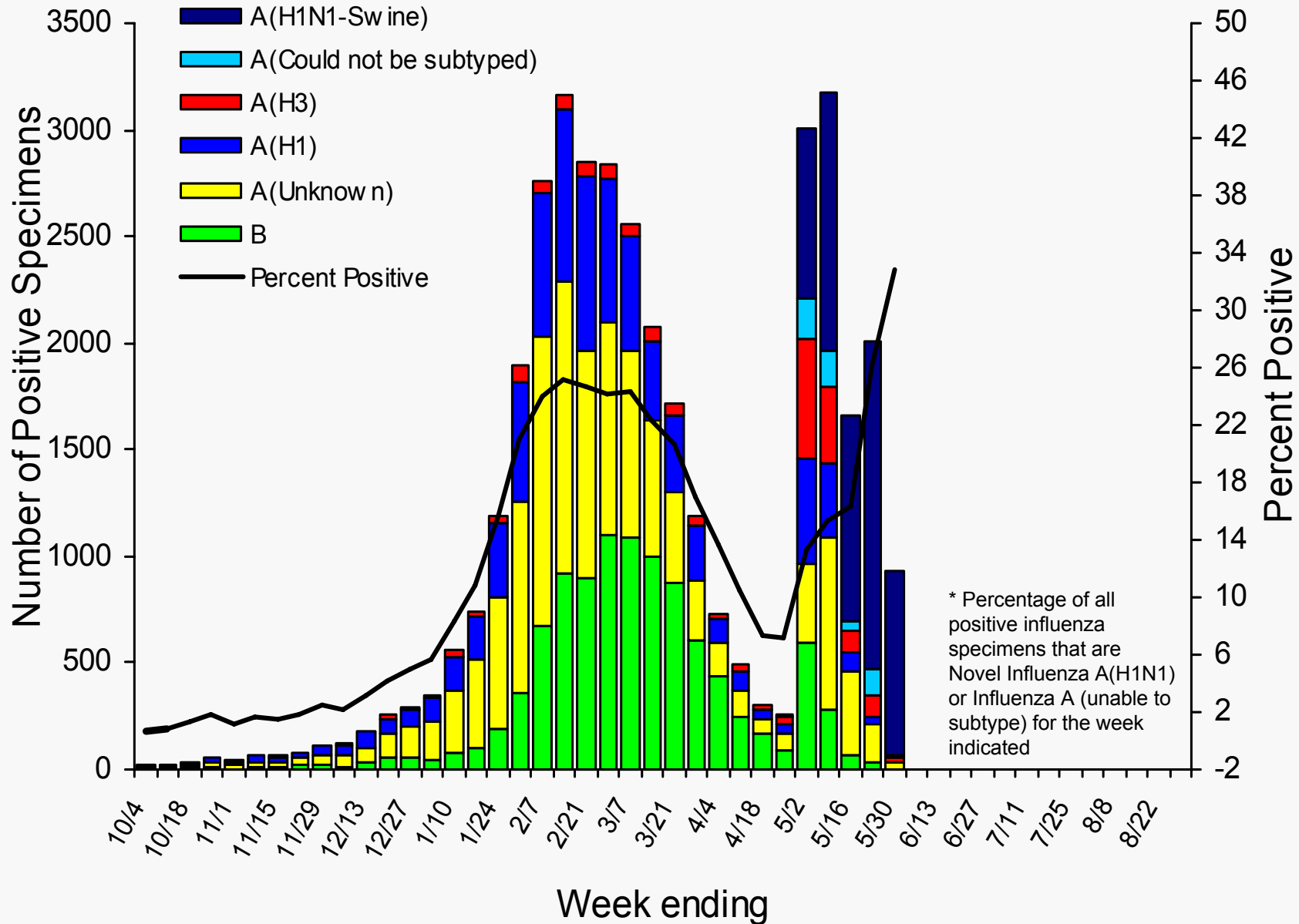
- **WHO/NREVSS Collaborating Laboratories**
 - Seasonal influenza A (H1), A (H3), and B viruses co-circulated with novel influenza A (H1N1) viruses
- **ILINet (week ending 30 May)**
 - % of ILI outpatient visits ↑ the national baseline
 - Overall, the percentage of outpatient visits for ILI is increasing
- **122 Cities Mortality Reporting System (graph)**
 - % pneumonia and influenza deaths remains within expected
 - % deaths due to pneumonia and influenza is remains stable
- **Geographic Spread of Influenza as Assessed by State and Territorial Epidemiologists – state reporting:**
 - Widespread: 4 states Regional: 11 states
 - Local: 13 states + DC Sporadic: 21 states None: 1 state



Epidemiology/Surveillance

Novel Influenza A (H1N1) - 02 JUN 2009

U.S. WHO/NREVSS Collaborating Laboratories Summary, 2008-09



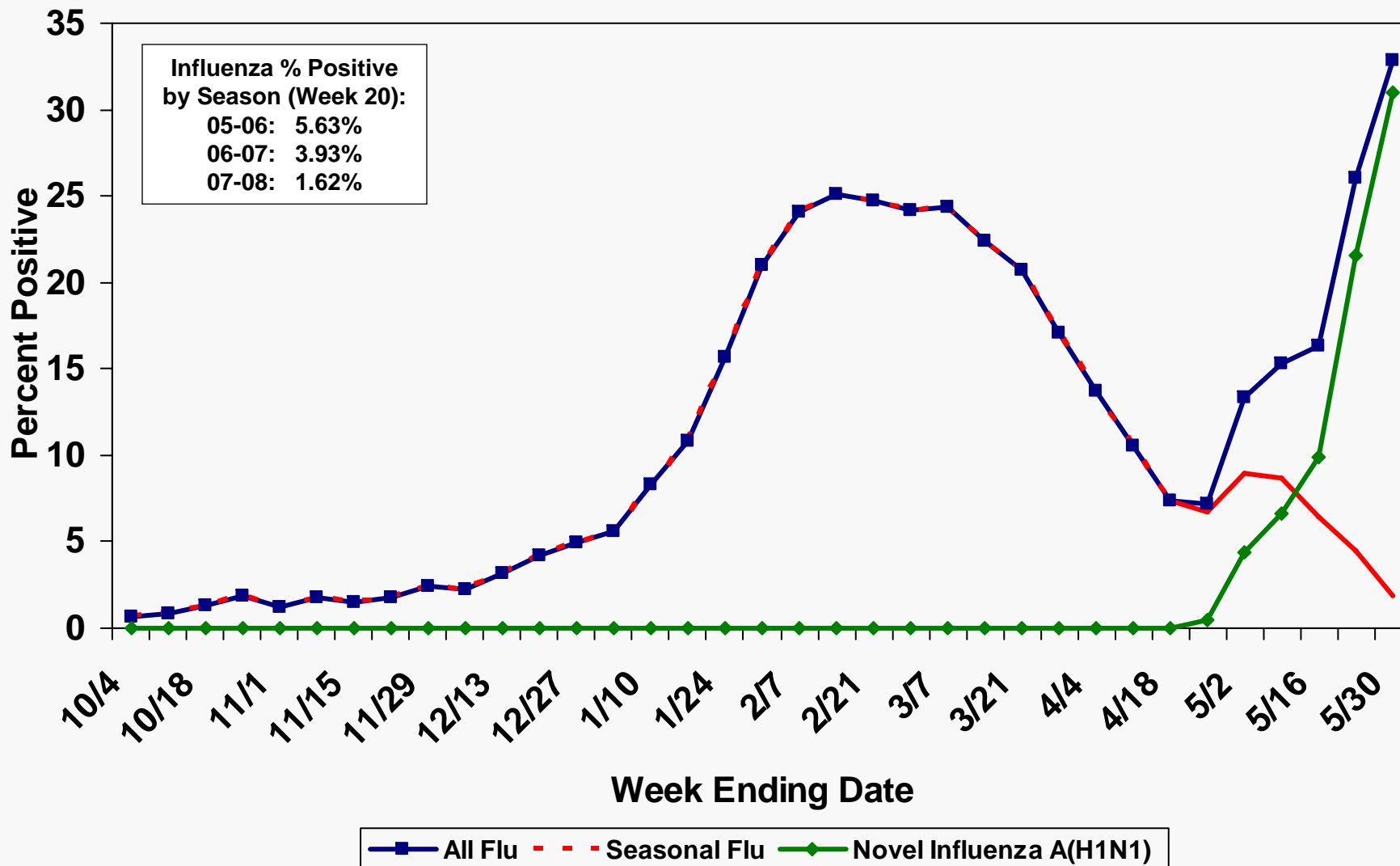


Epidemiology/Surveillance

Novel Influenza A (H1N1) - 02 JUN 2009



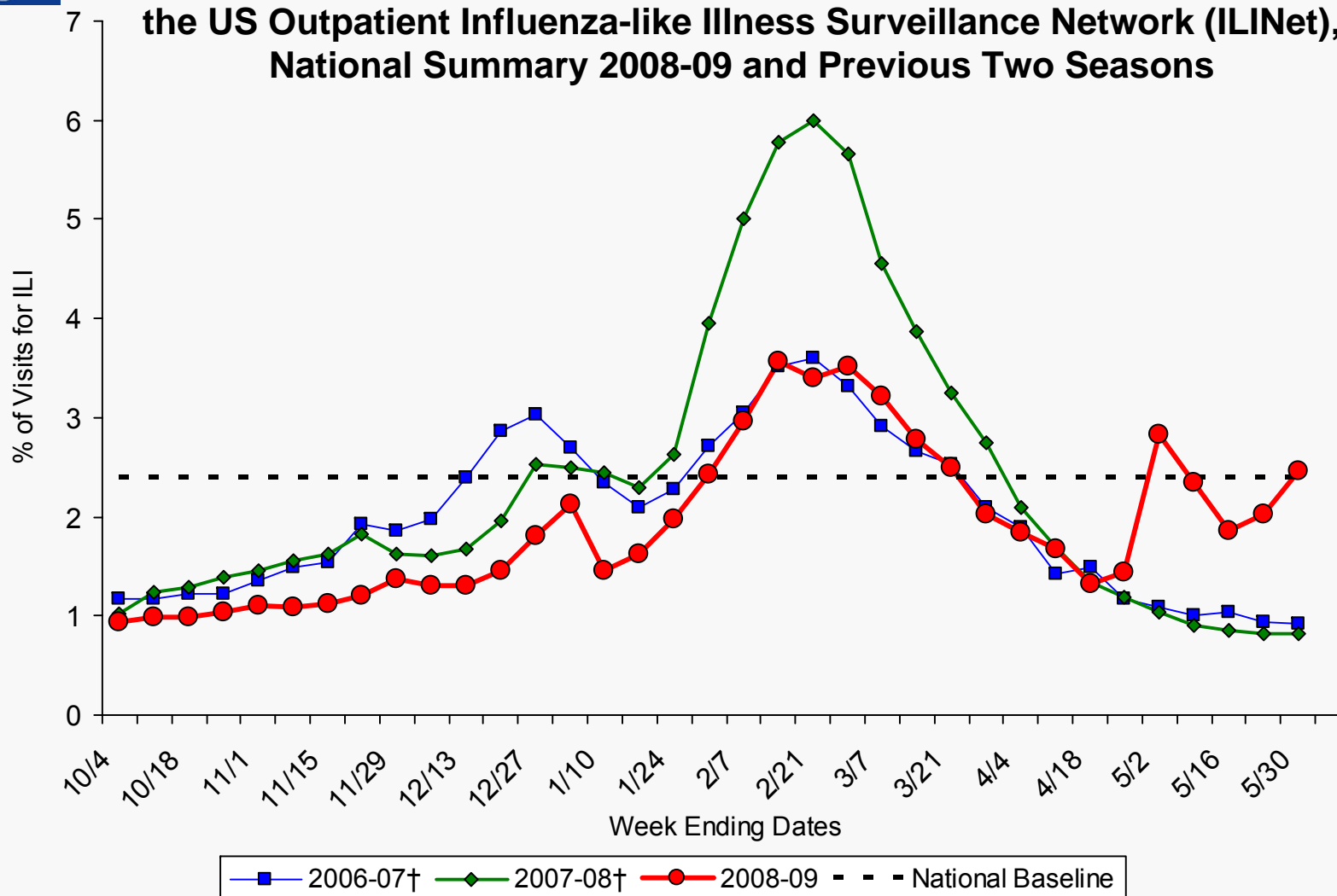
Percent of Specimens Positive for Influenza Reported by WHO and NREVSS Labs: Novel Influenza A(H1N1) vs. Seasonal Influenza, by Week





Epidemiology/Surveillance Novel Influenza A (H1N1) – 02 JUN 2009

Percentage of Visits for Influenza-like Illness (ILI) Reported by the US Outpatient Influenza-like Illness Surveillance Network (ILINet), National Summary 2008-09 and Previous Two Seasons



NOTE: Week ending dates vary by influenza season

*Preliminary ILI data for week 21, as of June 1, 2009 (n=367 weekly ILI reports received from 41 states)

† There was no week 53 during the 2006-07 and 2007-08 seasons, therefore the week 53 data point for those seasons is an average of weeks 52 and 1.



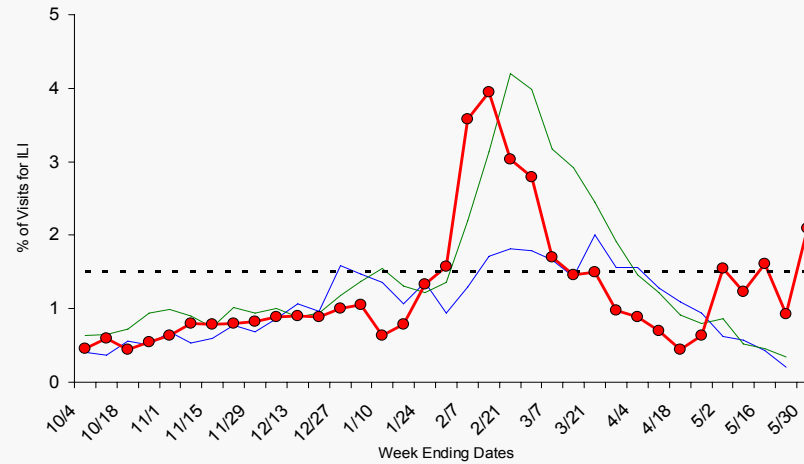
Epidemiology/Surveillance

Novel Influenza A (H1N1) – 02 JUN 2009

Current Influenza Surveillance – ILINet Regions I-III

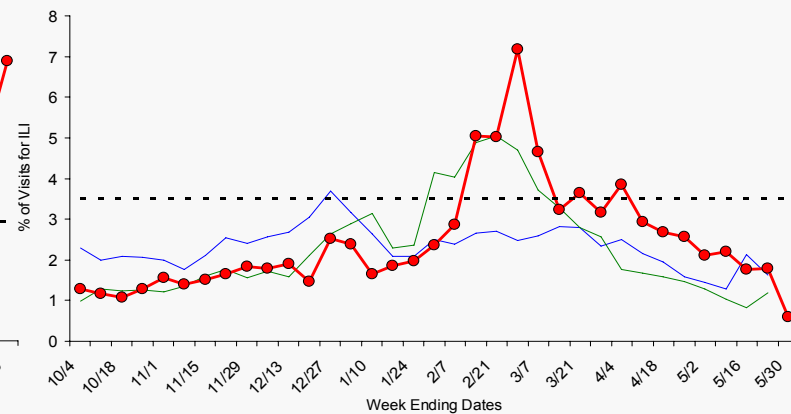
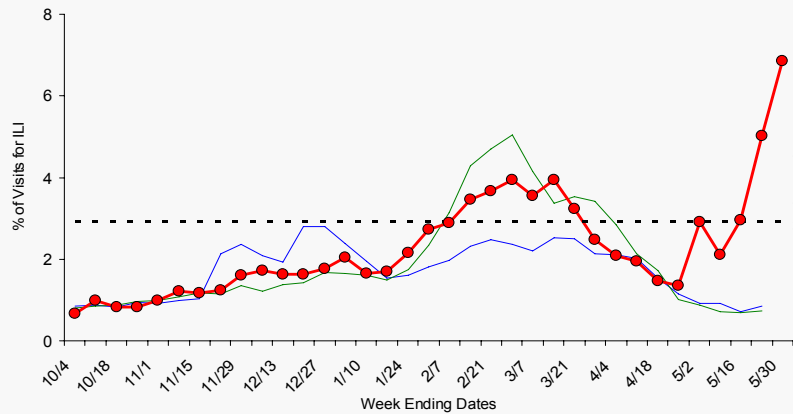


Region I - CT, ME, MA, NH, RI, VT



Region II - NJ, NY

Region III - DE, DC, MD, PA, VA, WV



NOTE: Scales differ between regions

NOTE: There was no week 53 during the 2006-07 and 2007-08 seasons, therefore the week 53 data point for those seasons is an average of weeks 52 and 1.

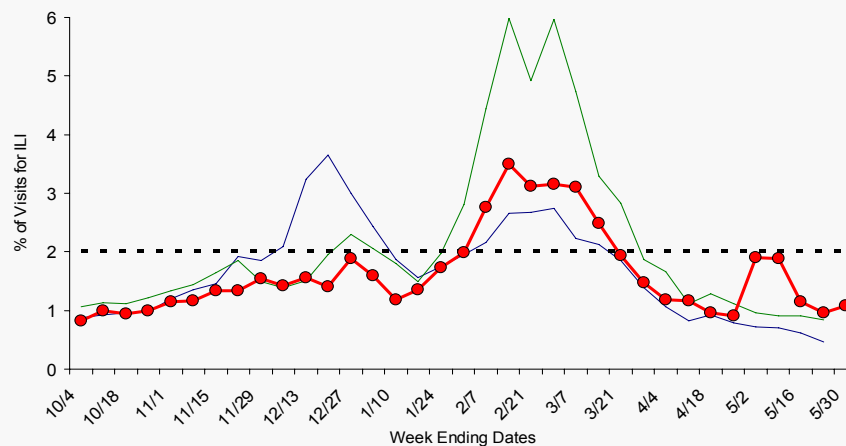


Epidemiology/Surveillance

Novel Influenza A (H1N1) – 02 JUN 2009

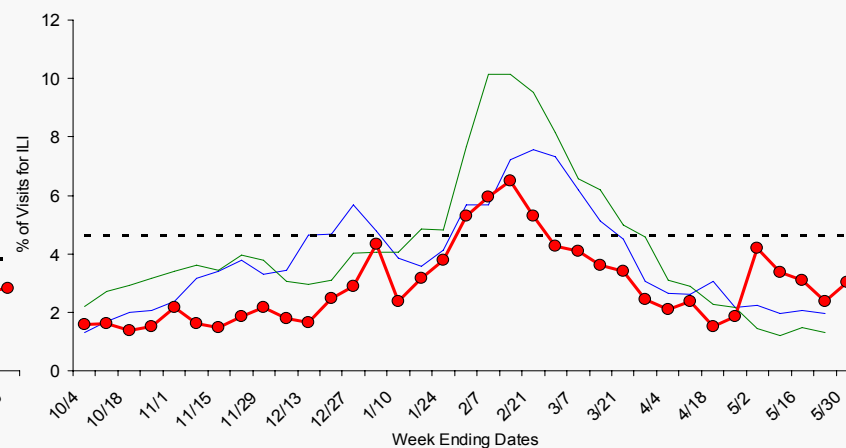
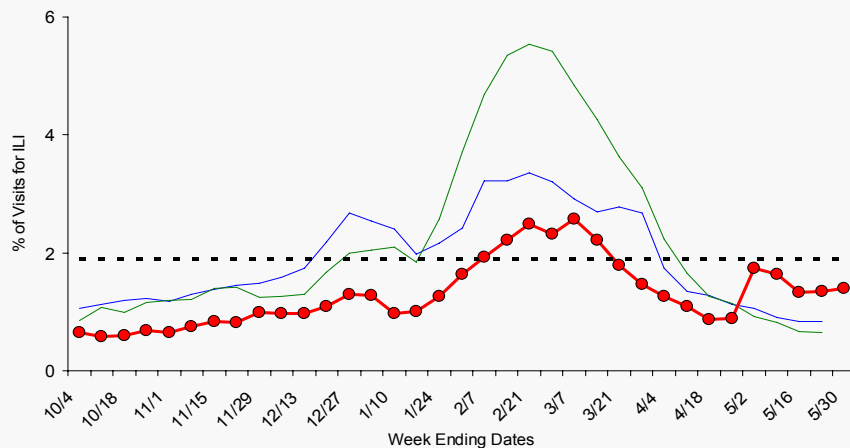
Current Influenza Surveillance – ILINet Regions IV-VI

Region IV - AL, FL, GA, KY, MS, NC, SC, TN



Region V - IL, IN, MI, MN, OH, WI

Region VI - AR, LA, NM, OK, TX



NOTE: Scales differ between regions

NOTE: There was no week 53 during the 2006-07 and 2007-08 seasons, therefore the week 53 data point for those seasons is an average of weeks 52 and 1.



Epidemiology/Surveillance

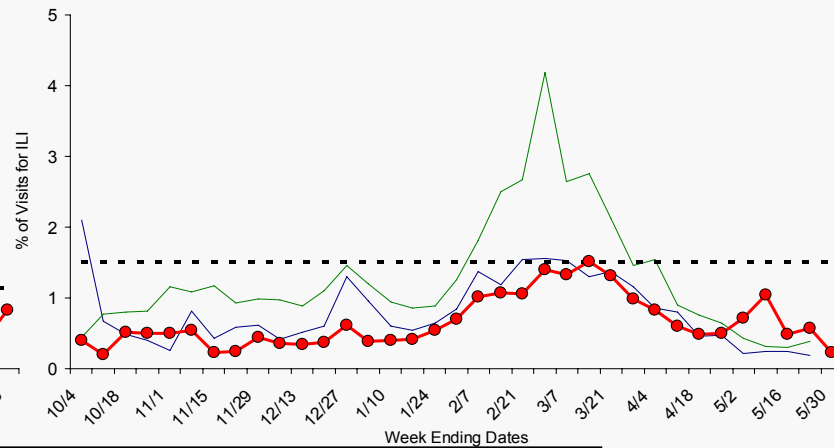
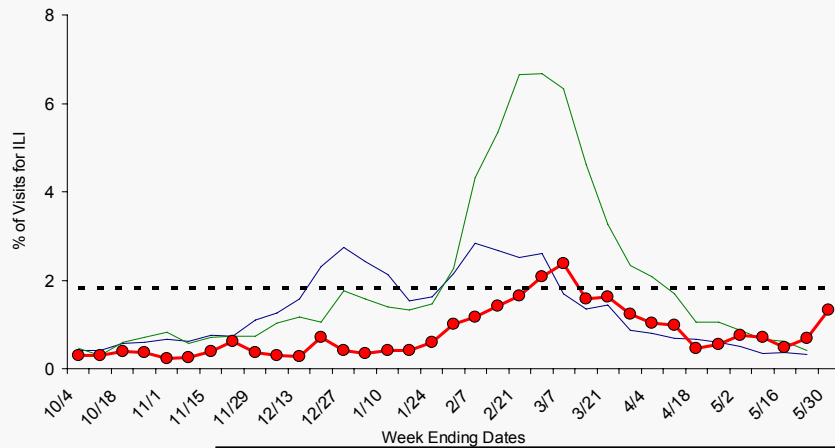
Novel Influenza A (H1N1) – 02 JUN 2009

Current Influenza Surveillance – ILINet Regions VII-X



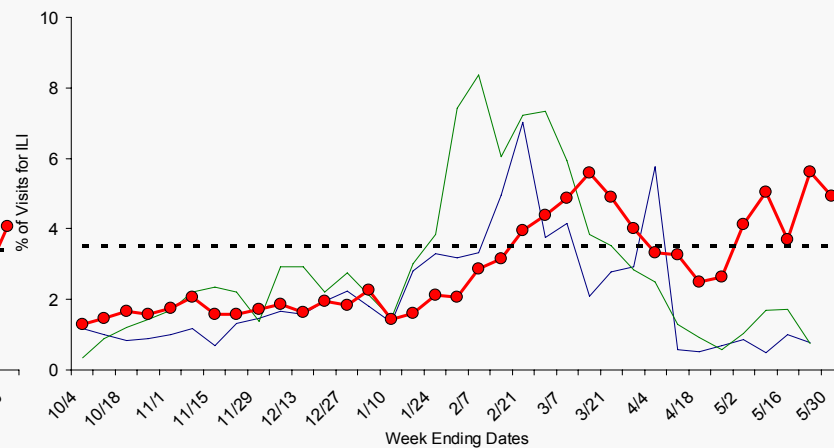
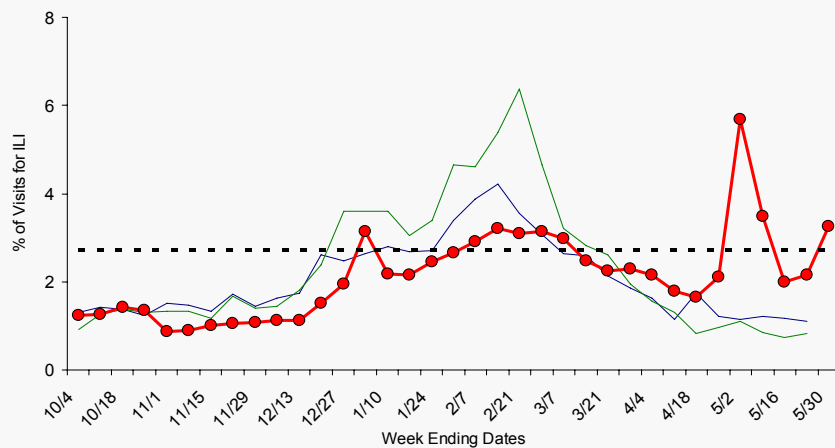
Region VII - IA, KS, MO, NE

Region VIII - CO, MT, ND, SD, UT, WY



Region IX - AZ, CA, HI, NV

Region X - AK, ID, OR, WA



NOTE: Scales differ between regions

NOTE: There was no week 53 during the 2006-07 and 2007-08 seasons, therefore the week 53 data point for those seasons is an average of weeks 52 and 1.

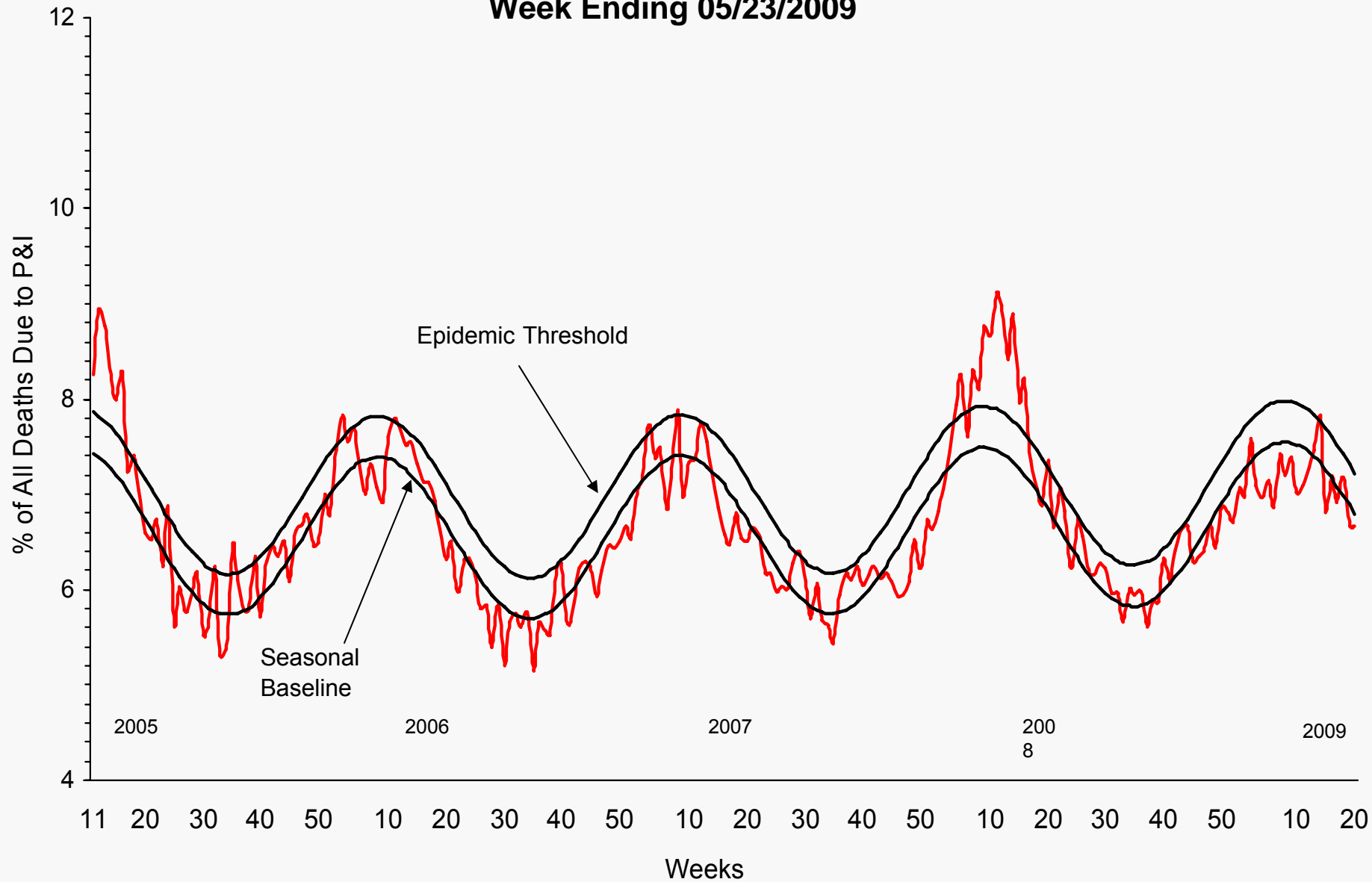


Epidemiology/Surveillance

Novel Influenza A (H1N1) - 29 May 2009

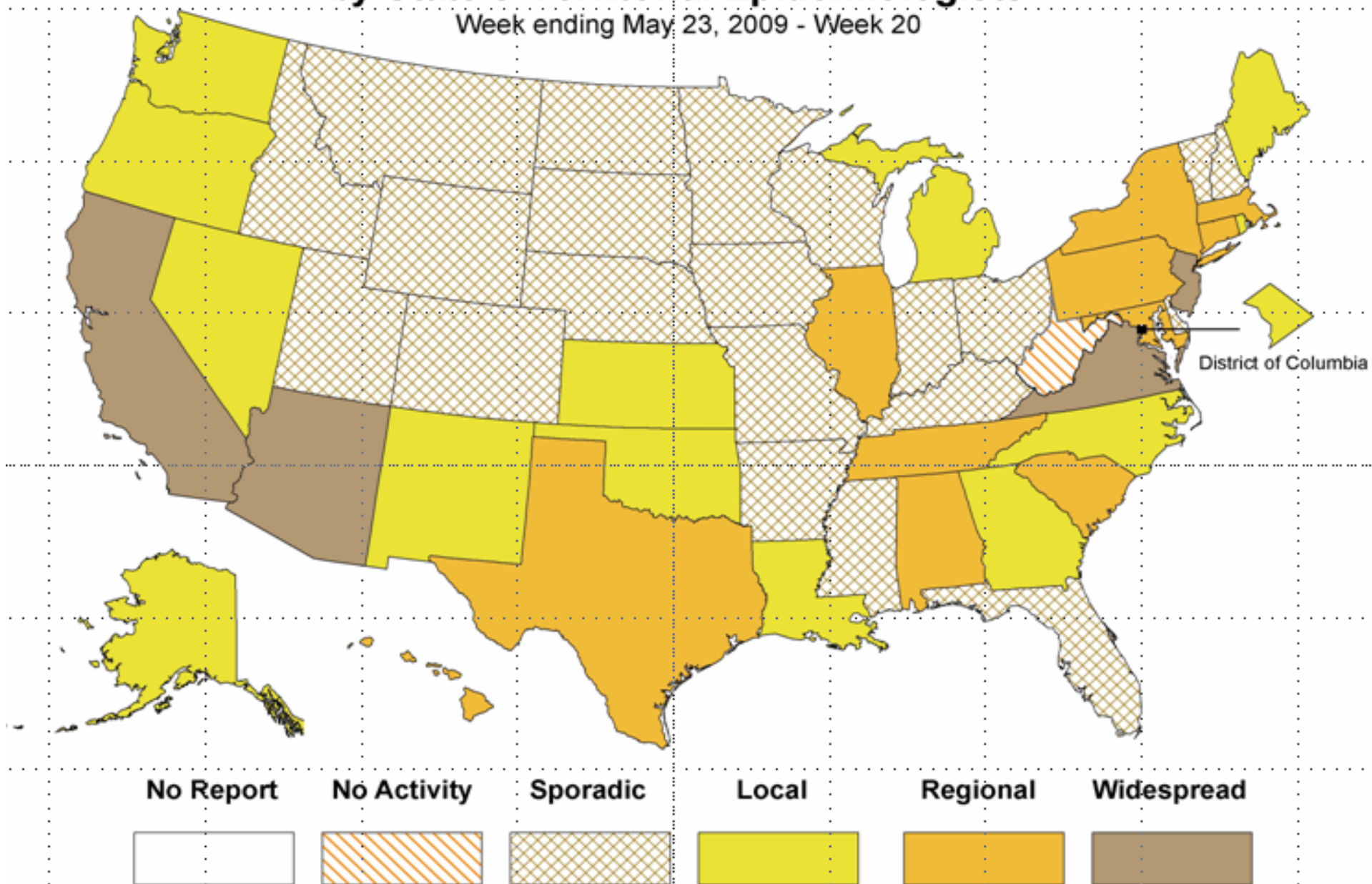
Pneumonia and Influenza Mortality for 122 U.S. Cities

Week Ending 05/23/2009



Weekly Influenza Activity Estimates Reported by State & Territorial Epidemiologists*

Week ending May 23, 2009 - Week 20



* This map indicates geographic spread & does not measure the severity of influenza activity



International Novel Influenza A (H1N1) 02 JUN 2009



- **WHO global case count:** 17,410 confirmed cases in 62 countries*
 - **14 new countries with confirmed cases in last 4 days:**
 - Europe:** Czech Republic, Cyprus, Estonia, Hungary, Romania, Slovakia
 - Americas:** Bahamas, Bolivia, Dominican Republic, Jamaica, Paraguay, Uruguay, Venezuela
 - Asia:** Vietnam
 - **Countries with highest confirmed case counts:**
 - **Mexico:** 5029 confirmed cases and 97 deaths (↑488 in last 4 days)
 - No change in trend in Mexico has been observed
 - **Canada:** 1336 (↑415 in last 4 days)
 - **Countries with recent jumps in confirmed case count:**
 - **Australia:** 297 (↑258 in last 4 days)
 - **Chile:** 250 (↑164 in last 4 days)
 - **Argentina:** 100 (↑81 in last 4 days)
 - **UK:** 229 (↑92 in last 4 days)
 - **China:** 52 (↑30 in last 4 days)

**Note: WHO case counts are current as of 06/01/09, 6:00 pm EDT*



Vaccine Novel Influenza A (H1N1) - 02 JUN 2009



- NVAC H1N1 vaccine session topics (6/2/2009)
 - Epidemiology/Response
 - Vaccine Development
 - Vaccine Planning Assumptions
 - Vaccine Safety
 - State and Local Response Role
 - Role of Federal Advisory Committees
- Manufacturer calls this week to discussions distribution options and capabilities



**Division of Global Migration and Quarantine
Novel Influenza A (H1N1) - 02 JUN 2009
Community Mitigation and Ports of Entry**



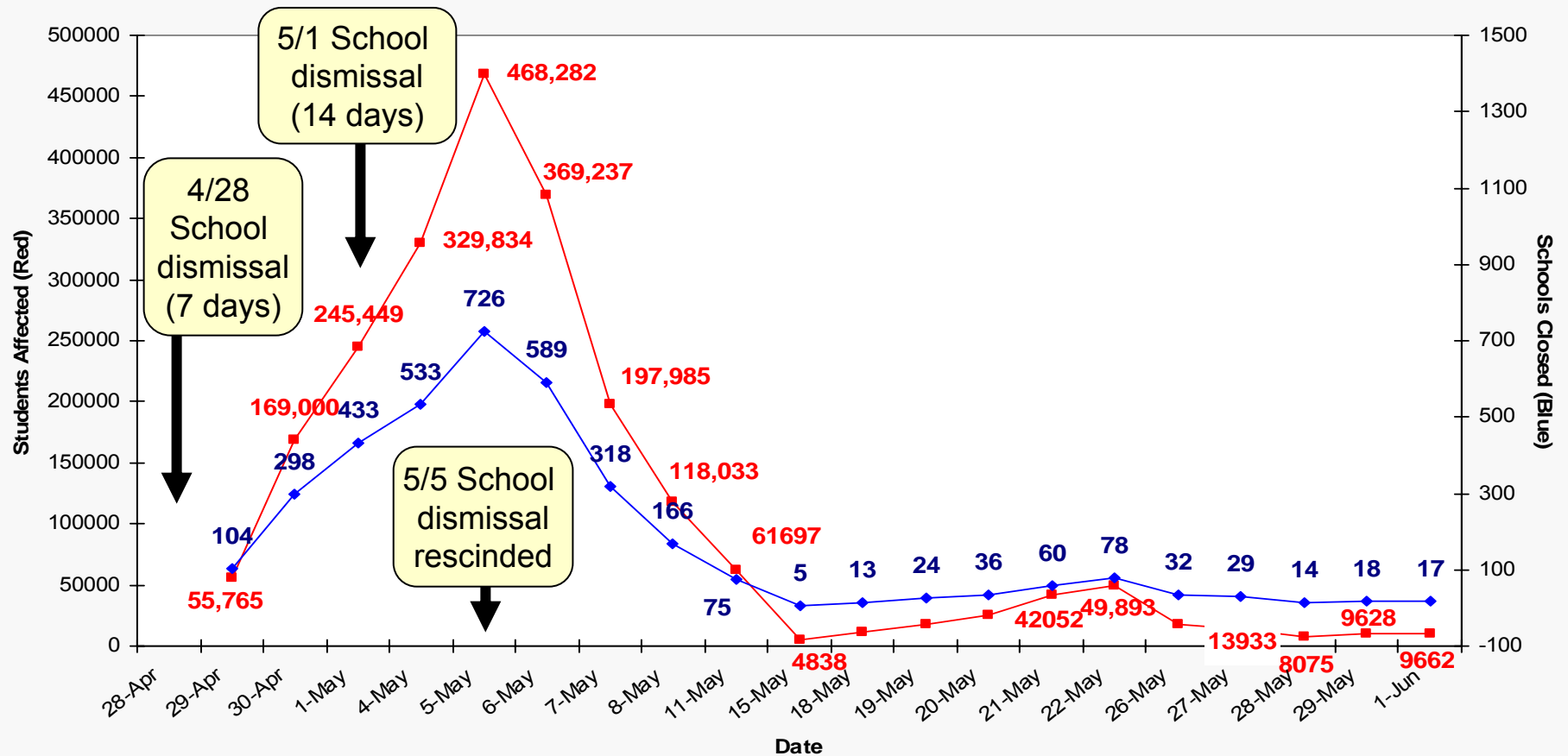
- **Community Mitigation**
 - NPI Effectiveness research meeting held on June 1
 - DOE visit to CDC this week regarding school dismissal
 - NPI Co-Op proposals are being reviewed for funding recommendations
 - Guidance documents for summer camp and child care in progress
 - Domestic EPI-AIDS (Dallas/Ft Worth, Pennsylvania, Houston, Delaware, and Chicago) in progress
 - NPI Surveillance plan under development, briefing forthcoming
- **Ports of Entry**
 - Quarantine Station staff displaying posters
 - 10 new cases of respiratory illness reported among travelers (May 29-June 1)
 - 8 ILI and 2 ARI cases
 - Total cases of H1N1 reported among travelers (April 1-June 1)
 - 31 Confirmed cases
 - 7 Probable cases
 - 74 Suspect cases



Division of Global Migration and Quarantine Novel Influenza A (H1N1) - 02 JUN 2009 School Dismissal, United States, 4/29 – 6/01, 2009



- 17 schools closed due to H1N1 in 3 states today: FL, MA, and NY
- The closures impacted 9,662 students and 773 teachers
- 13 schools reopened in MA, NY, and WA affecting ~5310 students and ~460 teachers



Source: ED and CDC Confirmed School Closing Reports released each weekday at 2:00pm

Source: ED and CDC Confirmed School Closing Reports released each weekday at 2:00pm



Communications Summary Novel Influenza A (H1N1) – 02 JUN 2009



Channel Traffic (From Friday to Monday)

- Web Page Views: 633,154 to 261,136 (-59%)
- Public Inquiries: 317 to 96 (-70%)
- News Stories: Print/Internet: 106 to 64 (-40%)
- Twitter: “Swine Flu” 31.9/min. to 3.0/min, “H1N1” 4.1/min. to 5.5 min.

Themes

- No national television stories were found; no stories found in about 1/3 of top 25 markets; TV news is dominated by local events.

Emerging Themes

- Face masks for TSA? Amendment to TSA Authorization Bill being considered in Congress.
- Models’ Projections for Flu Miss Mark by Wide Margin; computer models estimated the number of probable flu cases by this time at about 2500; CDC estimates there are more than 100,000.
- Treasury Secretary Geithner flies in a military aircraft to China - China quarantining passengers sitting close to suspected H1N1 passengers on commercial flights.