



Director's Situation Update Monday

**11 May 2009 1100 EDT
Day 23**

Day of Vaccine Planning



Novel Influenza A (H1N1) Key Events 11 May 2009



- **Novel Influenza A (H1N1) Declarations**
 - WHO: Pandemic Phase 5 (29 Apr 1600 EDT)
 - Declarations of Emergency (no changes)
 - USG: Public Health Emergency declared (26 Apr 2009)
 - SLTT Declarations: 10
 - CA, TX, WI, FL, NE, VA, MD, IA, OH, American Samoa
 - National Declarations: 4
 - Ecuador, Costa Rica, Colombia, Mexico
- **US Cases:**
 - Confirmed: 2,618 cases (♣ 86)
 - 2,614 cases, 43 States; 4 cases DC
 - Probable: 704 cases
 - 698 cases, 40 States; 6 cases DC
 - Confirmed/Probable: 3,322 cases (♣ 75)
 - 3,312 cases, 46 States; 10 cases DC
 - Third fatality in US identified in WA
 - Total Deaths 3: (2-TX, 1-WA)
- **International Cases: 4,694 in 30 Countries**
 - New countries with confirmed cases: Norway, China
- **Deployments: 116 deployed, 34 pending**



Novel Influenza A (H1N1) 11 May 2009



Strategic Objectives / Principles

1. Reduce illness and death
2. Minimize societal impact
3. Put greatest effort in activities with greatest impact

Zones of Effort

1. Understanding the problem
2. Public Health Interventions
3. Communications



Epidemiology/Surveillance Team

Novel Influenza A (H1N1) Cases as of 11 May 2009 1100 EDT



	Confirmed (CDC Lab)									
	Cases				Hosp				Deaths	
	# State Cases	# States	# DC Cases	TTL States+DC	# State Cases	# States	# DC Cases	TTL States+DC	# State Cases	# States
11-May	2,614	43	4	2,618	93	21	1	94	3	2
Change (5/10 to 5/11)	86	0	0	86	(-4)	0	0	(-4)	0	0

	Total Confirmed and Probable									
	Cases				Hosp				Deaths	
	# State Cases	# States	# DC Cases	TTL States+DC	# State Cases	# States	# DC Cases	TTL States+DC	# State Cases	# States
11-May	3,312	46	10	3,322	109	24	1	110	3	2
Change (5/10 to 5/11)	(-75)	0	0	(-75)	(-10)	0	0	(-10)	0	0

-Internal Use Only (FIUO)---For Official Use Only (FOUO) -

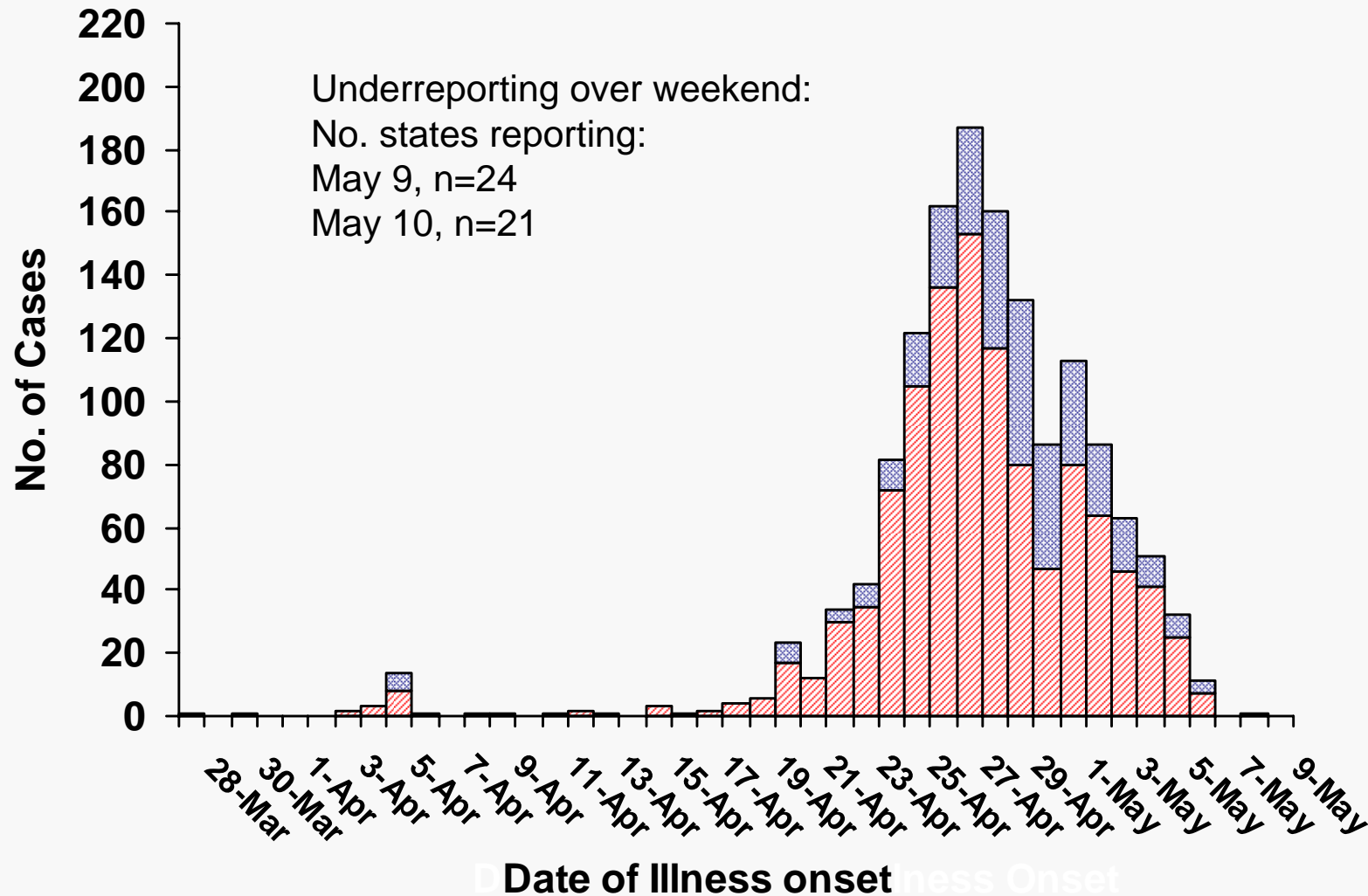


Epidemiology/Surveillance Team

Cases by Date of Onset as of 11 May 2009 1100 EDT



Confirmed Probable



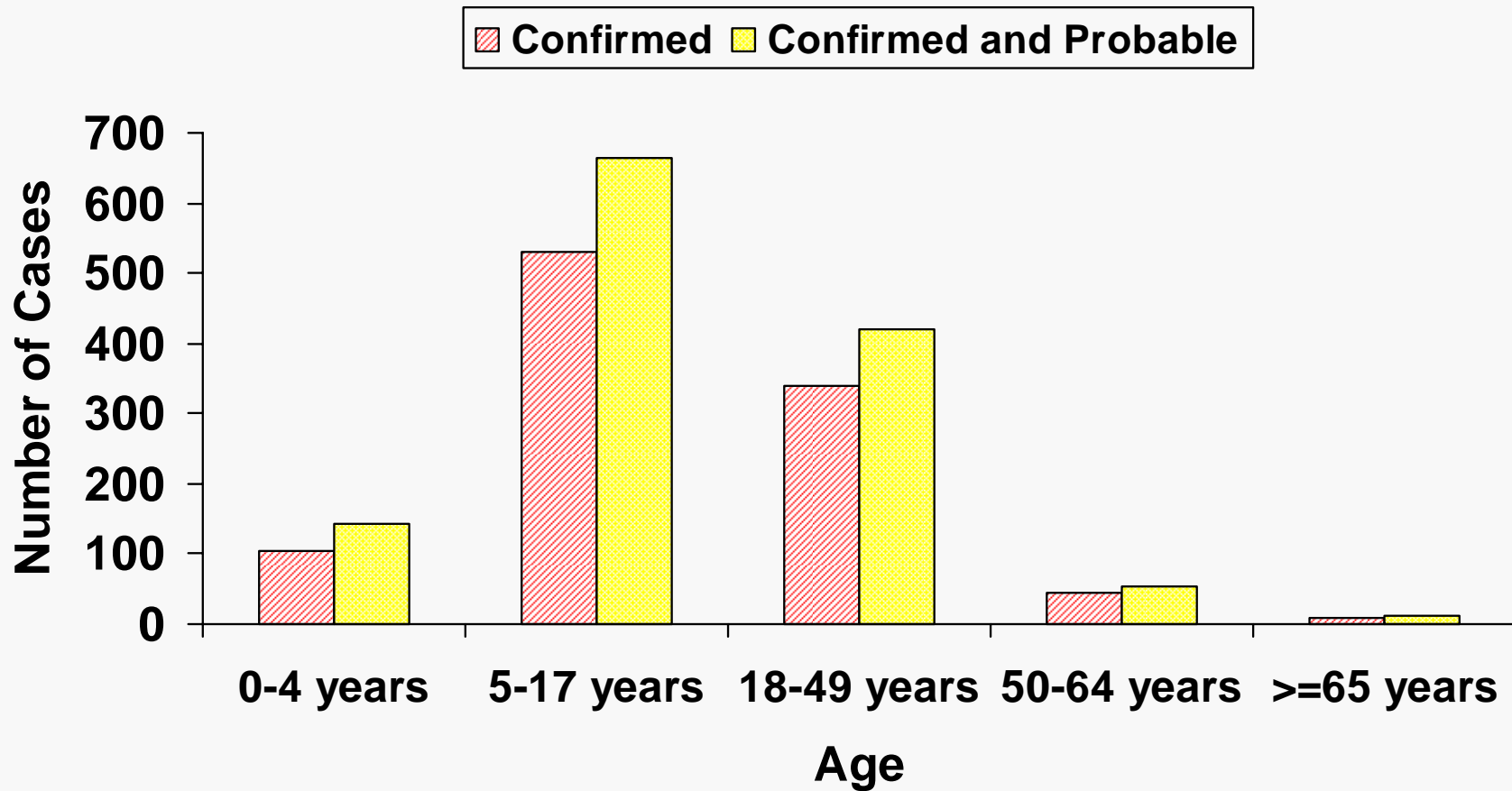
-Internal Use Only (FIUO)---For Official Use Only (FOUO) -

NOT FOR FURTHER DISTRIBUTION -Sensitive But Unclassified (SBU) - Novel Influenza A (H1N1) - **NOT FOR FURTHER DISTRIBUTION**



Epidemiology/Surveillance Team

Age Group by Case Status as of 11 May 2009 1100 EDT



*Age available for 962/2618 confirmed and 244/704 probable cases.



Epidemiology/Surveillance Team

Confirmed Cases Descriptive Statistics as of 11 May 2009 1100 EDT



- **Median age: 15 years, range 1 month- 86 years**
- **62% (633/1026): age <18 years**
- **16 cases: age <12 months**
- **Gender: 49% female**

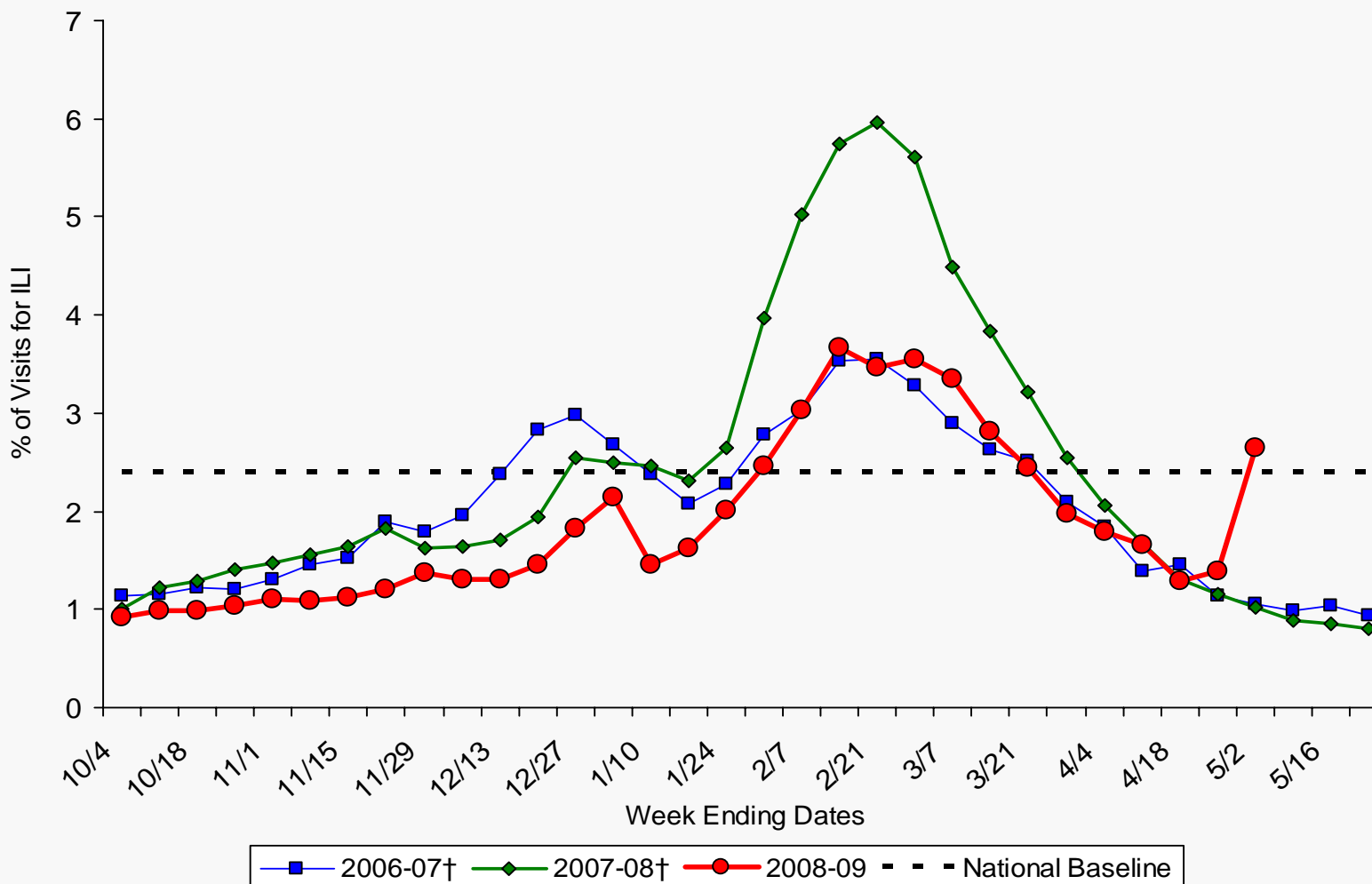
-Internal Use Only (FIUO)---For Official Use Only (FOUO) –

7

NOT FOR FURTHER DISTRIBUTION -Sensitive But Unclassified (SBU) – Novel Influenza A (H1N1) – **NOT FOR FURTHER DISTRIBUTION**



**% ILI Visits Reported by US Outpatient Influenza-like Illness Surveillance Network (ILINet),
National Summary 2008-09 and Previous Two Seasons
(No updates since last report)**



NOTE: Week ending dates vary by influenza season

***Preliminary ILI data for week 17, as of May 10, 2009 (n=1,081 weekly ILI reports received from 50 states)**

† There was no week 53 during the 2006-07 and 2007-08 seasons, therefore the week 53 data point for those seasons is an average of weeks 52 and 1.

-Internal Use Only (FIUO)---For Official Use Only (FOUO) -



Epidemiology/Surveillance Assessment & Planning 11 May 2009



- **Assessment:**
 - **Current case counts represent low case reporting by states May 9-10**
 - **Expect significant increase in numbers reported May 11**
- **Plan:**
 - **Continuing to review general epi trends as well as info from HCP and pregnancy activities**
 - **Anticipating additional data from field studies over next several days, including household attack rates, estimates of duration of symptoms from shedding study**



International Novel Influenza A (H1N1) - 11 May 2009



- **WHO global case count: 4,694 confirmed cases in 30 countries***
 - No major increase in cases since yesterday's report
 - New countries with confirmed cases: **Norway, China****
 - China's first confirmed case:
 - 30 y.o. male studying at unspecified US university
 - Departure flight from US was out of St. Louis
 - Countries with highest confirmed case count after the US and Mexico:
 - Canada: 284 (♣ 4) Spain: 95 (=) UK: 47 (♣ 4)
- **Two documents being finalized**
 - Research Agenda for Tropics and Southern Hemisphere
 - CDC Strategy for H1N1 Pandemic Mitigation in the Imminent Southern Influenza Season
- ***Note: WHO case counts are current as of 05/11/09, 6:00 am EDT**
- ****First case in mainland China. 1 case previously confirmed in Hong Kong.**



Division of Global Migration and Quarantine Novel Influenza A (H1N1) - 11 May 2009



- **Ports of Entry (POEs)**
 - 157 response events, 15 confirmed after referral at POE (10 May)
 - Hawaii DOH conducting enhanced sentinel surveillance:
 - Swabs for arriving domestic and international travelers with ILI symptoms
 - Positive travelers encouraged to self-isolate
- **Community Mitigation (CM)**
 - Epi-Aids: NPI - NY, Chicago, Delaware
 - Ft Worth School closure evaluation under review
 - Community Mitigation Team arrived Mexico City, 9 May



Vaccine Novel Influenza A (H1N1) - 11 May 2009



- **Activities**
 - **Developing recommendations around use of remaining 2008-09 Northern Hemisphere seasonal vaccine (week of 5/11/09)**
 - **Plans Unit mission analysis**
 - **Strategy meeting on unintended consequences**
 - **ACIP influenza work group call**

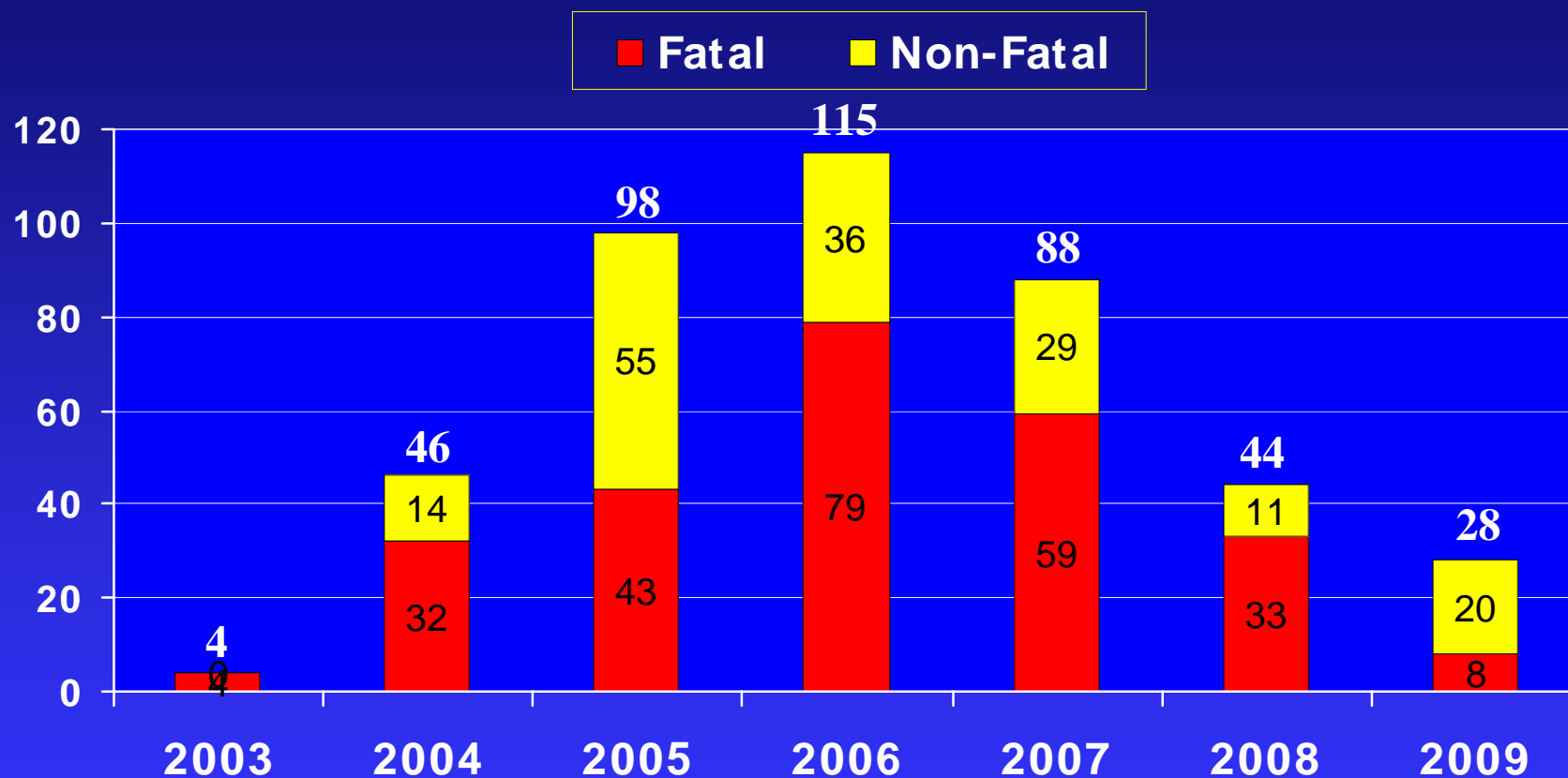


**Animal/Human
Novel Influenza A (H1N1) - 11 May 2009**



- **High Pathogenic Avian Influenza (HPAI)**
 - **H5N1 OIE confirmed outbreaks in past 3 weeks**

Human Cases of Avian Influenza H5N1 2003-2009*



*WHO, May 6, 2009: 423 cases total, 258 fatal (61.19%)





Communications Summary

Novel Influenza A (H1N1) - 11 May 2009



Domestic Communication

Channel Traffic

- Web Page Views: 729, 366 (-49%)
- Public Inquires: 290 (-55%)
- Print/Internet News Stories: 241 (-3%)
- National Television Stories: 26 (+63%)
- Local Television Stories: 320 (-20%)

Themes

Print/Internet—Focus on International Themes

New flu kills US man, spreads to Australia, Japan

Emerging themes (all news channels)

- Criticism of warning system – WHO needs mechanism to dial down the anxiety levels while educating about the extent of transmission.

Spanish Language Media Monitoring (global outlets; machine translation)

Coverage, generally non-sensational, factual, and non-critical

- **Case count continues to mount rapidly**
- **Secondary transmission instances noted in Europe**
- **Illness course mild-moderate and self-limiting**
- **Fatal cases (Costa Rica, Canada) in presence of underlying (chronic) disease or disorder**
- **Economic losses in Mexico, substantial though effort underway to “normalize” activities**

Public Inquiries: CDC-INFO emails/calls

- Symptoms? 23%
- Incubation Period? 12%
- Travel recommendations? 10%