

Bosque Humedo de América Tropical

Plantas Leñosas ESPINOSAS

Robin Foster, Brenda Lin, Margaret Metz, Tyana Wachter

Fotos de: R. B. Foster & T. S. Wachter. Producido por: R. B. Foster, B. B. Lin, M. R. Metz, con el apoyo del Andrew Mellon Foundation.

© Environmental & Conservation Programs, The Field Museum, Chicago, IL 60605 USA. [RRC@fmnh.org] Rapid Color Guide # 23 version 1.3



1 **Aiphanes**
ARECACEAE



2 **Astrocaryum** chambira
ARECACEAE



3 **Astrocaryum** standleyanum
ARECACEAE



4 **Bactris** maraja
ARECACEAE



5 **Bactris** glaucescens
ARECACEAE



6 **Cryosophila** stauracantha
ARECACEAE



7 **Desmoncus** orthoacanthos
ARECACEAE



8 **Barnadesia** parviflora
ASTERACEAE



9 **Ceiba** pentandra (juv.)
BOMBACACEAE



10 **Chorisia** speciosa
BOMBACACEAE



11 **Pachira** quinata (juv.)
BOMBACACEAE



12 **Pereskiaopsis** aquosa
CACTACEAE



13 **Jacaratia** digitata
CARICACEAE



14 **Dioscorea**
DIOSCOREACEAE



15 **Hura** crepitans
EUPHORBIACEAE



16 **Acacia**
FABACEAE



17 **Acacia** collinsii
FABACEAE



18 **Erythrina**
FABACEAE



19 **Machaerium** cirriferrum
FABACEAE



20 **Piptadenia** anolidermis
FABACEAE

Tropical America – Moist Forest

WOODY PLANTS with SPINES and THORNS

Robin Foster, Brenda Lin, Margaret Metz, Tyana Wachter

Photos by: R. B. Foster & T. S. Wachter. Produced by: R. B. Foster, B. B. Lin, M. R. Metz, with support from the Andrew Mellon Foundation.
© Environmental & Conservation Programs, The Field Museum, Chicago, IL 60605 USA. [RRC@fmnh.org] Rapid Color Guide # 23 version 1.3



21 *Xylosma chlorantha*
FLACOURTIACEAE



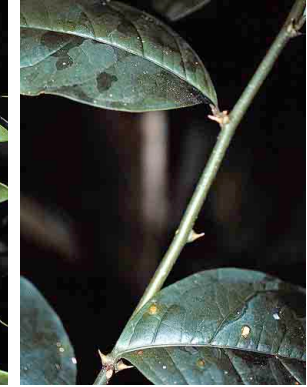
22 *Poulsenia armata*
MORACEAE



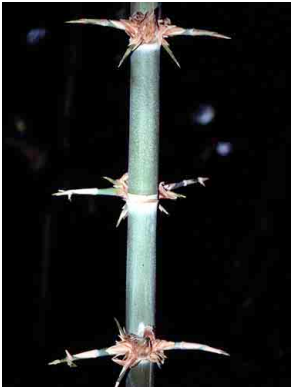
23 *Pisonia aculeata*
NYCTAGINACEAE



24 *Ximenia americana*
OLACACEAE



25 *Seguiera*
PHYTOLACCACEAE



26 *Guadua*
POACEAE



27 *Rubus*
ROSACEAE



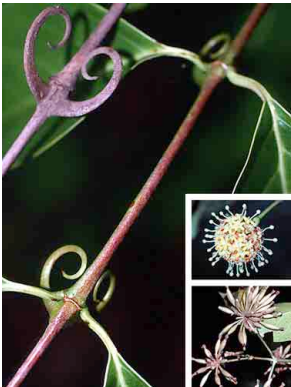
28 *Guettarda foliacea*
RUBIACEAE



29 *Randia aculeata*
RUBIACEAE



30 *Randia armata*
RUBIACEAE



31 *Uncaria guianensis*
RUBIACEAE



32 *Zanthoxylum ekmanii*
RUTACEAE



33 *Zanthoxylum* (juv.)
RUTACEAE



34 *Smilax*
SMILACACEAE



35 *Solanum viridipes*
SOLANACEAE



36 *Byttneria aculeata*
STERCULIACEAE



37 *Jacquinia macrocarpa*
THEOPHRASTACEAE



38 *Celtis iguaneus*
ULMACEAE



39 *Urera baccifera*
URTICACEAE



40 (helecho arboreo)
PTERIDOPHYTA