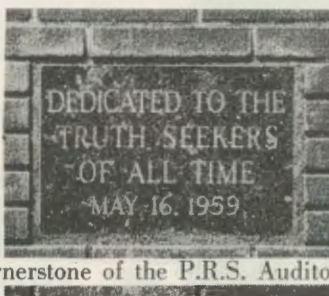


# The Philosophical Research Society, Inc.

3910 Los Feliz Blvd. - Los Angeles 27, Calif. - NOrmandy 3-2167

MANLY P. HALL  
President - Founder

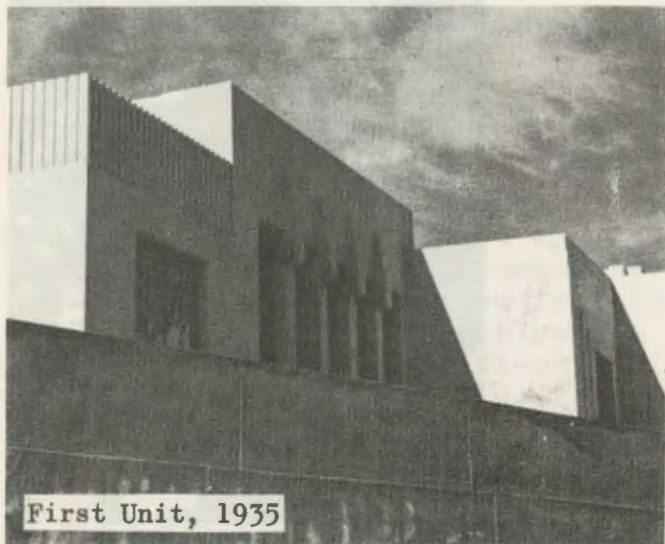
HENRY L. DRAKE  
Vice-President



40th ANNIVERSARY  
OF MANLY P. HALL'S  
PUBLIC WORK  
1960

WHAT THE COOPERATION OF DEDICATED FRIENDS HAS MADE POSSIBLE

THE HEADQUARTERS OF THE PHILOSOPHICAL RESEARCH SOCIETY



## A House of Philosophy In the Modern World

The keynote of all activities is support of the significance of spiritual values in a material world, with philosophical instruction directed to wider understanding of the laws of living for the physical, moral and spiritual welfare of all humankind.

## The Library and Classroom Came Next

The library makes available to thoughtful students an impressive collection of source material devoted to philosophy, religion, and psychology. The classroom was the first center for instruction on our own premises.





THIRD UNIT, 1959



### Completing Our Building Program

The Auditorium makes it possible to centralize all P.R.S. activities at headquarters. The buildings now surround a spacious patio, where an atmosphere of gracious quietude prevails.

### Dedication Ceremony

"It is our dedicated purpose that these foundations of timeless wisdom, fashioned by this our present labor, shall endure to serve and inspire men and women of good spirit throughout the world."

— Manly P. Hall



### First Lecture In the Auditorium

Friends from far and near gather in our Auditorium to share the benefits of idealistic learning.

HELP THOSE WHO ARE HELPING OTHERS -- EXPRESS YOUR IDEALS BY SUPPORTING  
THE PHILOSOPHICAL RESEARCH SOCIETY





### SPECIAL BULLETIN TO ALL P.R.S. FRIENDS

Dear Friend:

Since you are on our mailing list because you are interested in the work of our Society, we feel that you will want to know of the important project in progress at headquarters. We have arrived at the happy moment when the bank mortgage on our Auditorium loan has been reduced from \$40,000 to only \$10,000. We feel, therefore, that the time has come to invite all our friends to participate in an all-out effort to pay off this indebtedness. Success will enable us to devote our resources more fully to the printing program and educational activities which are the basic work of our Society.

The initial financing of the Auditorium was accomplished by gifts, largely in the form of long-term pledges. Due to a change in one of Los Angeles City's ordinances, it became necessary to begin construction of the building before the pledges given were paid in. Luckily we had in hand about two thirds of the necessary funds, and were able to arrange for the balance from the Bank of America on security supplied by pledges and some other assets. We met our deadline, and the Auditorium has been in regular use since July 1959.

Although some of the original contributors to the Building Fund have voluntarily renewed their pledges, a number of others, for varied reasons, have been unable to complete theirs. This has caused a serious drain on the Society's working capital, since we have had to carry a larger part of the bank payments each month, which, with interest, amount to \$575. Relieving our budget of this burden would help substantially to carry on the work of the Society in the years ahead. The saving in interest alone, for example, would make possible the publication of a new book.

It would be most inspiring to us all if the entire Auditorium project were financed through voluntary contributions of



friends who believe in the Society's work. I sincerely hope you will want to help in attaining this goal. Your donation will place your name on our contributors' list, and you will receive our bi-monthly "Contributors' Bulletin." This will bring you news of our activities, notes on art treasures in our collection, and special announcements about publications.

The plan set forth in the accompanying blank allows you to choose the amount of your gift and to send it in four monthly payments, without undue strain on your budget. We will deeply appreciate your whole-hearted cooperation in this project.

If all of our friends will help as much as they can, I am sure that we can look forward to the happy occasion of burning the mortgage as our first official act in January 1964.

Hopefully and sincerely yours,

*Manly P. Hall*

I wish to participate in the P.R.S. "Burn the Mortgage" project, and will send a contribution each month, from September through December 1963, as follows:

Donations to  
the Society are  
tax-deductible.

- |                                          |                                          |
|------------------------------------------|------------------------------------------|
| <input type="checkbox"/> \$ 2.50 a month | <input type="checkbox"/> \$25.00 a month |
| <input type="checkbox"/> 5.00 a month    | <input type="checkbox"/> 50.00 a month   |
| <input type="checkbox"/> 10.00 a month   | <input type="checkbox"/> _____ a month   |

I enclose my September donation herewith.

\* \* \* \* \*

I prefer to make my total contribution at this time: \$ \_\_\_\_\_

NAME \_\_\_\_\_

ADDRESS \_\_\_\_\_

Please make checks or money orders payable to P.R.S. BUILDING FUND