

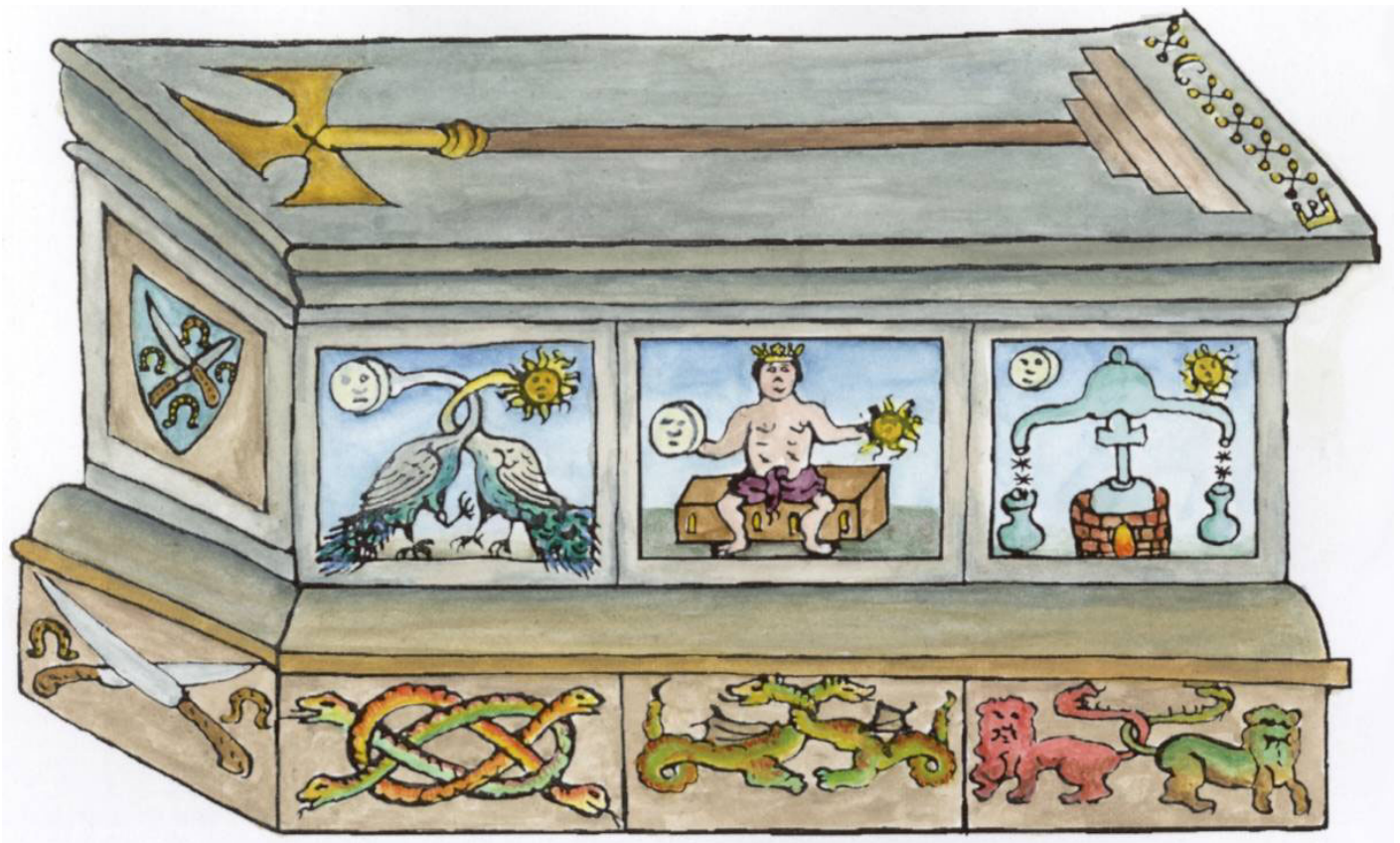
The third collection of
alchemical and hermetic emblems
coloured by Adam McLean

Gallery of individual emblems

These images are copyright © Adam McLean 2004
The images on this CD-Rom are for use only for private study and must not be used in any publication, or distributed in electronic form on web sites or other media, without permission from the copyright holder Adam McLean <alchemy@dial.pipex.com>. This applies both to entire images or parts of images. This file has been set up so that both printing and the cutting and pasting of the images is disabled. The images are distributed in this form for study and contemplation on a computer screen. If you require high quality colour prints of some of these images then see the details of how to purchase at:

<http://www.alchemywebsite.com/bookshop>

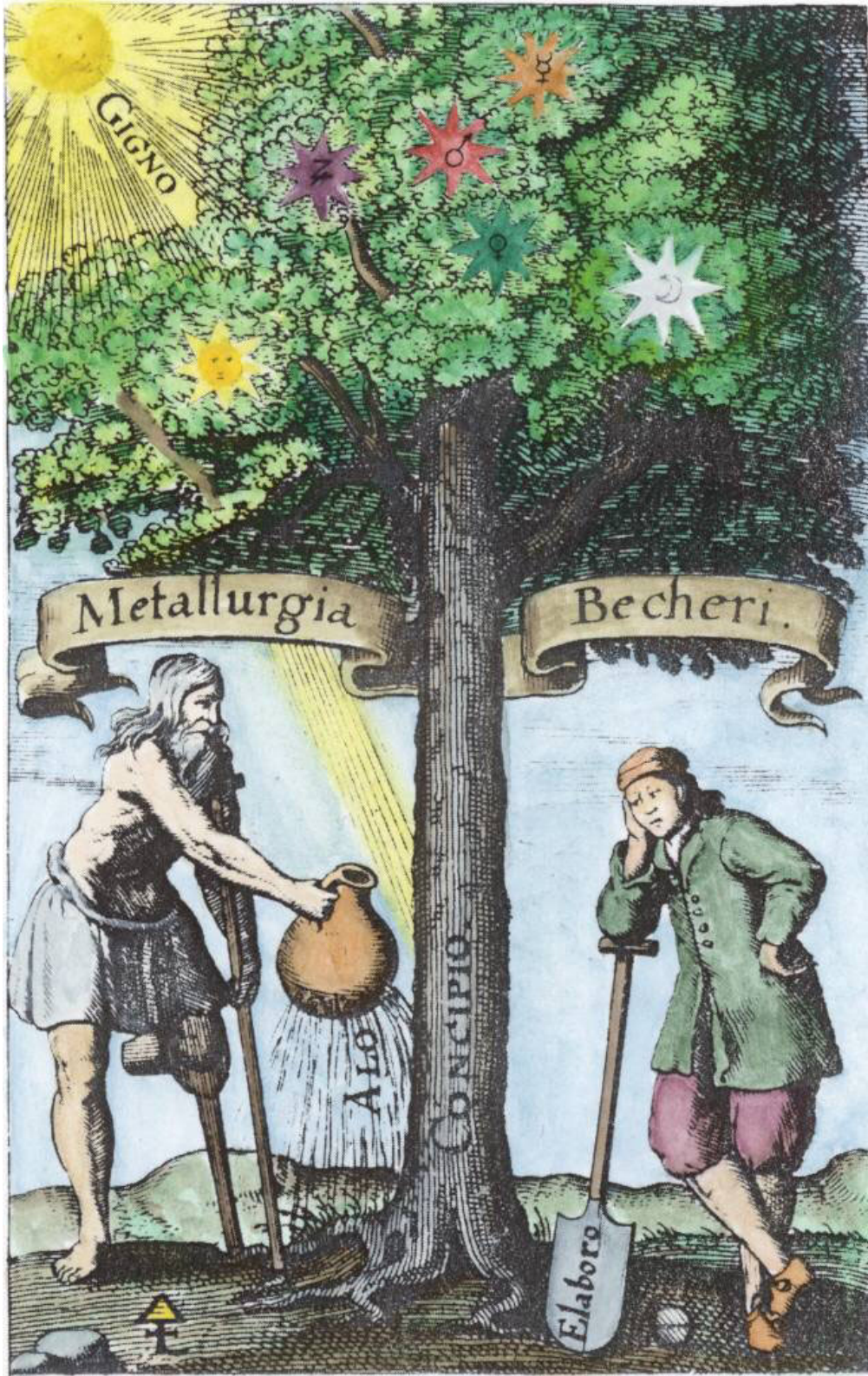
A161. Redrawn version of George Ripley's tomb.



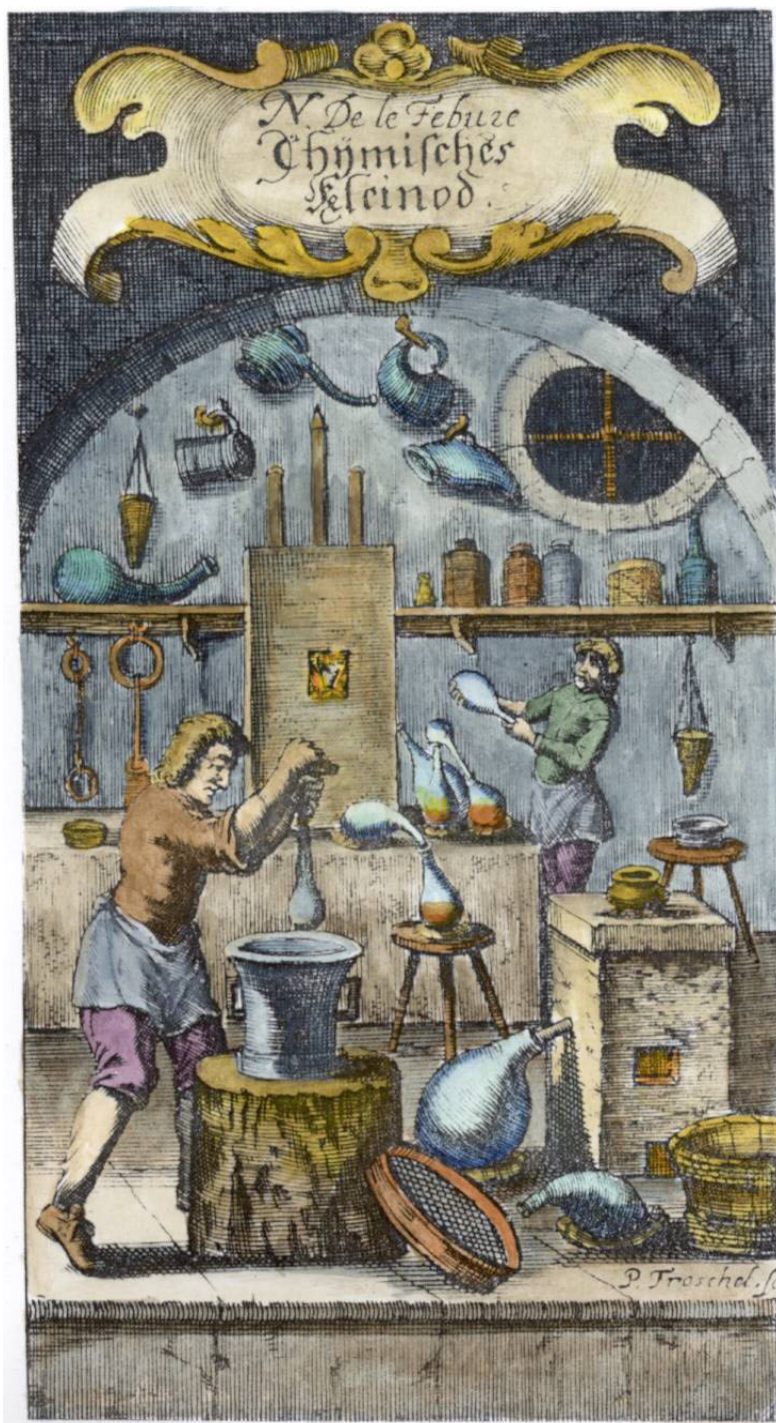
A162. Titlepage engraving from Schweighardt *Speculum sophericum Rhodostauroticum*, 1618.



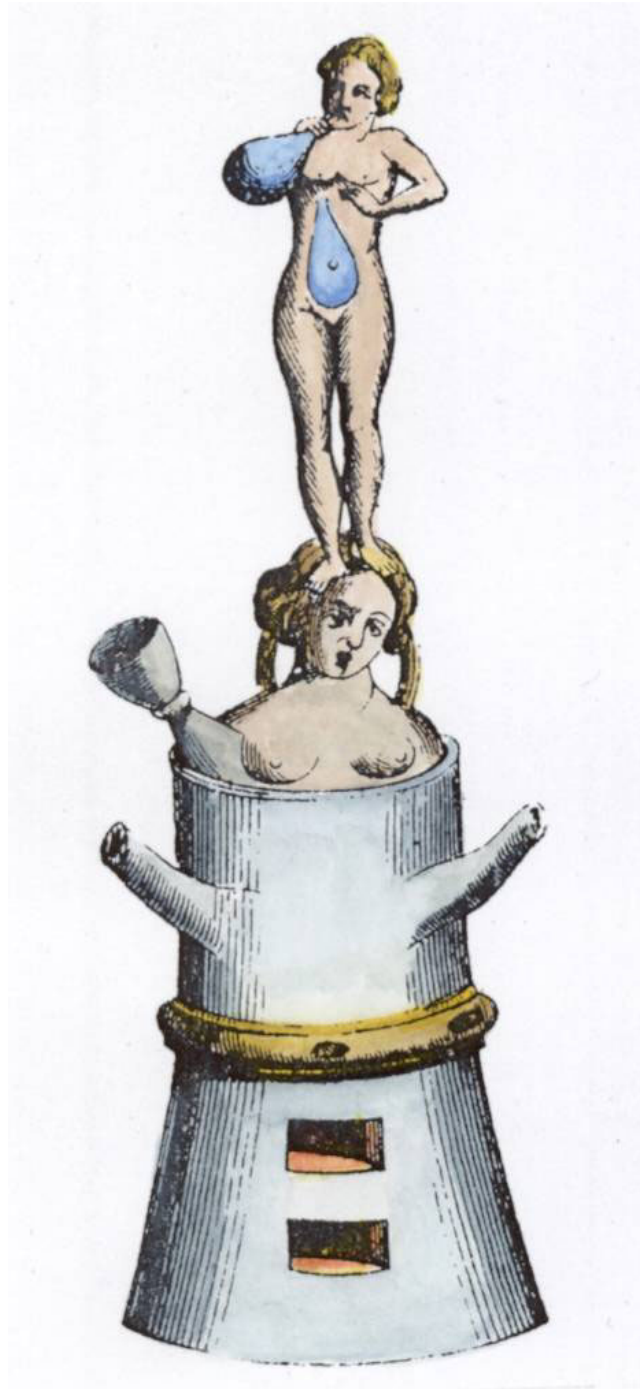
A163. Engraved titlepage from Johann Joachim Becher, *Natur-Kündigung der Metallen*, Frankfurt, 1661.



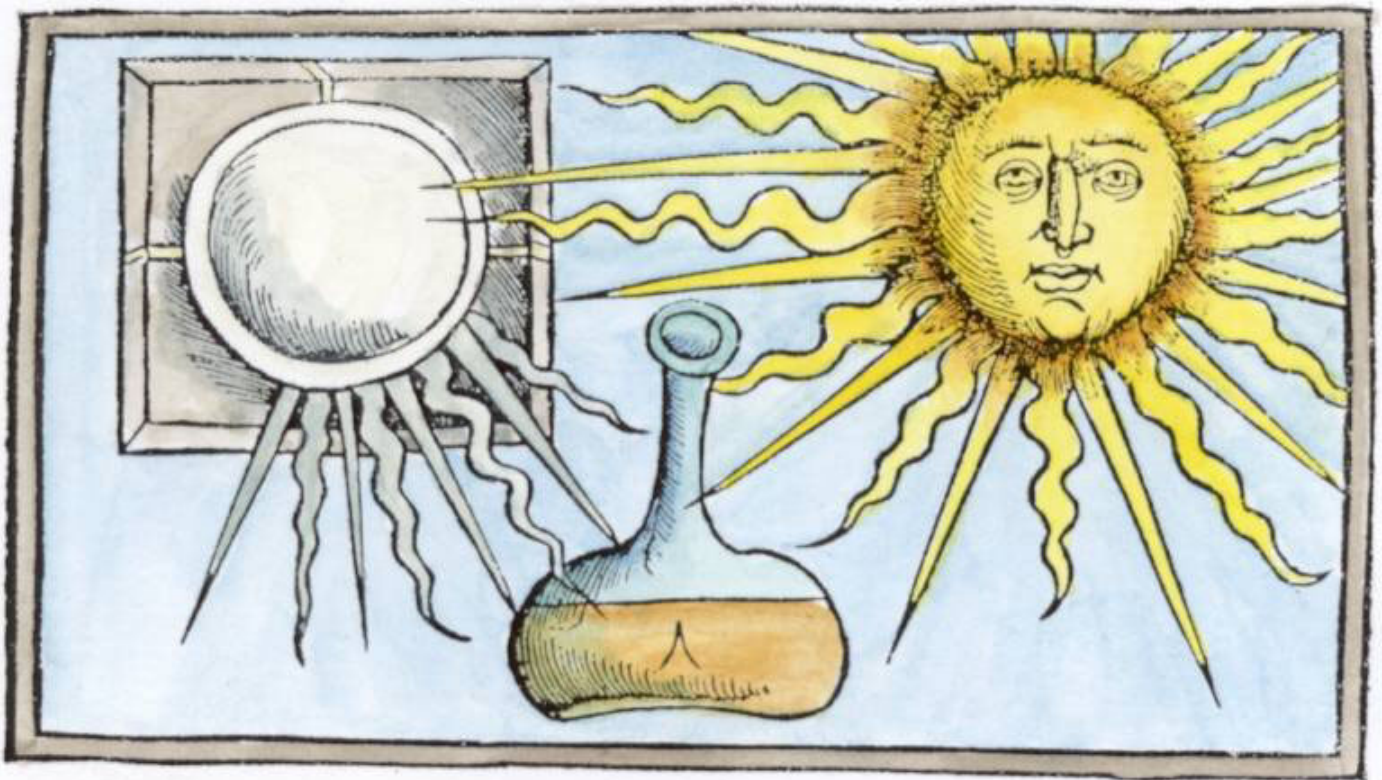
A164. Engraving from Nicolas Le Fèvre, *Chymischer Handleiter, und guldnes Kleinod*, Nurnberg, 1676.



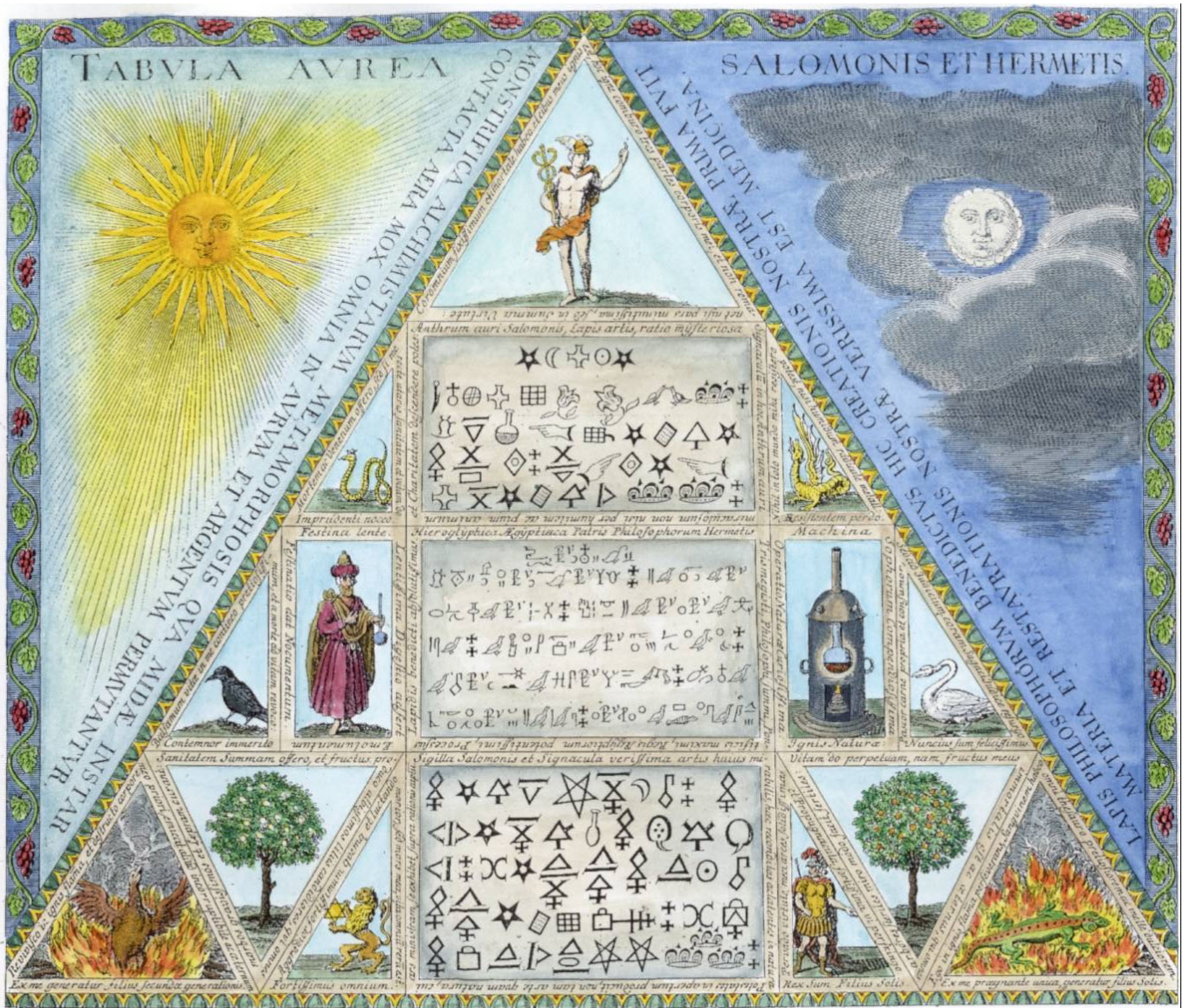
A165. J. De Vries, *Fourneau*, 16th Century.



A166. Woodcut from Philip Ulstad, *Coelum Philosophorum*, Strassburg, 1526.



A167. Engraving from Hermogenes, *Des aufrichtigen Hermogenes Apocalypsis*, Leipzig, 1739.



A168. Engraving from Johann Joachim Becher, *Opuscula chymica rariora*, Nurnberg, 1719



A169. Engraving from Karl von Eckhartshausen, *Zahlenlehre der Natur*, Leipzig, 1794.



A170. Engraved titlepage from Michael Maier, *Viatorium*, Oppenheim, 1618



A171. Engraved titlepage from Mylius, *Anatomia Auri*, Frankfurt, 1628.



A172.



A173. Frontispiece engraving from *Der hermetische Philosophus oder Haupt-Schlüssel*, Frankfurt, 1709.



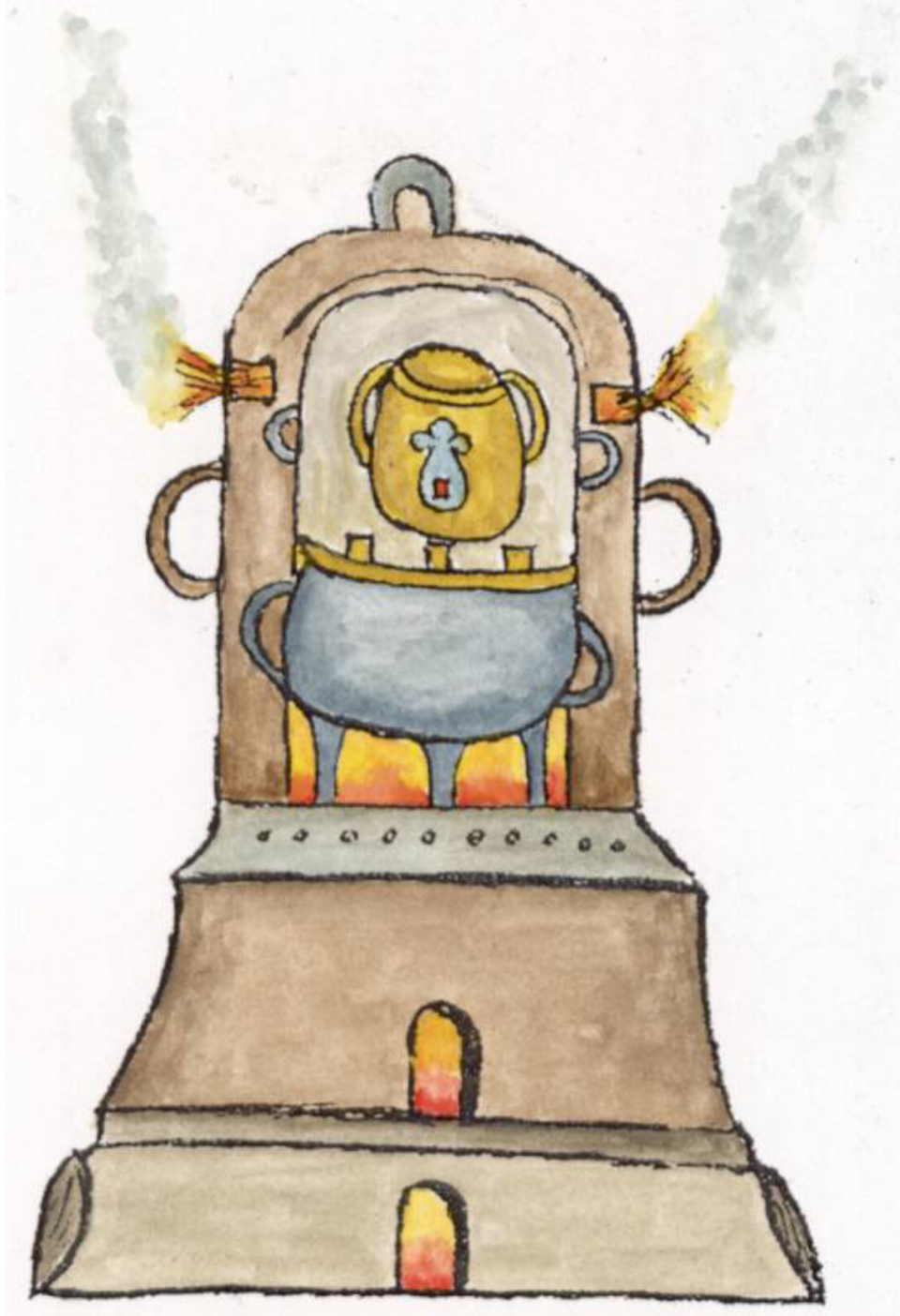
A174. Frontispiece engraving from *Der hermetische Philosophus oder Haupt-Schlüssel*, Frankfurt, 1709.



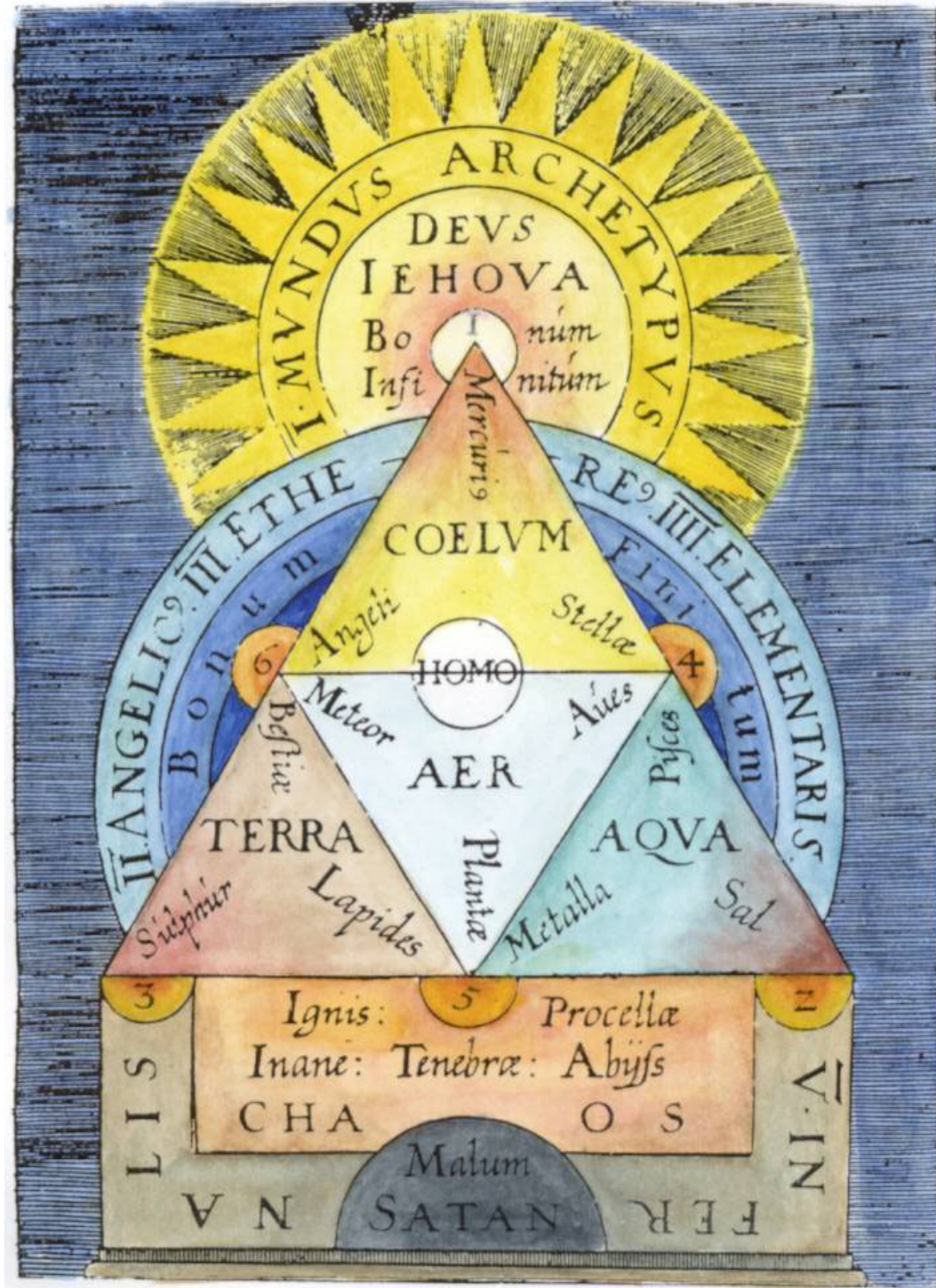
A175. Engraving of Mercurius Trismegistus from Pierre Mussard, *Historia Deorum fatidicorum*, Venice, 1675.



A176. Thomas Charnock's furnace from a manuscript, 16th century.



A177. Engraving of Cosmological diagram from Helisaeus Röslin *De Opere Dei Creationis, seu, de mundo hypotheses*, Franckfurt, 1597.



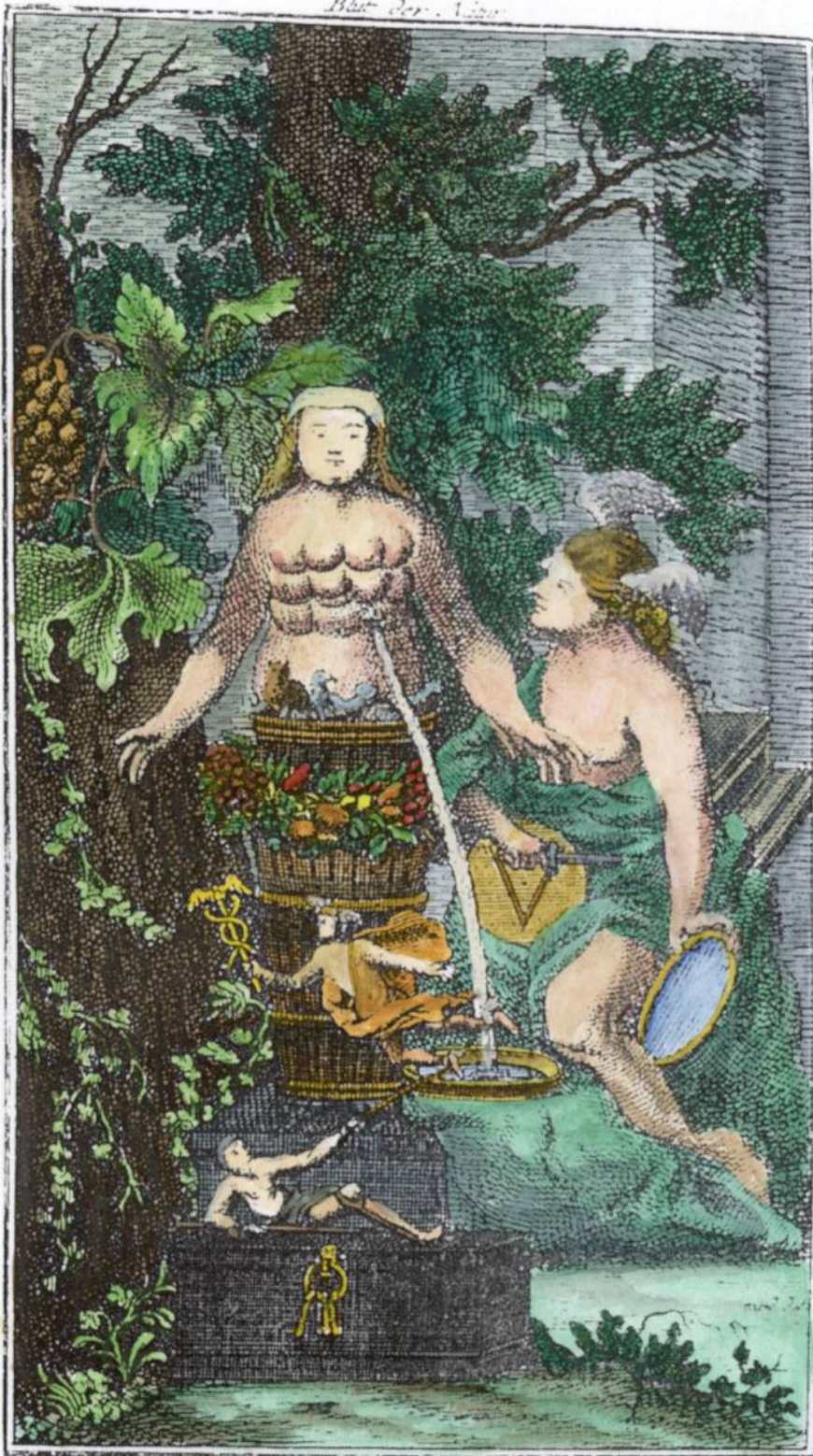
A178. Engraving by Abraham Bosse *La calcination Solaire de l'antimoine* (Calcination of antimony by sunlight.)



A179. Frontispiece engraving from Karl von Eckhartshausen *Aufschlüsse zur Magie*, Munich, 1788.



A180. Engraving from Anonymus von Schwartzfuss *Das Blut der Natur*, Frankfurt and Leipzig, 1767.



A181. Engraved title page from *Musaeum hermeticum*, 1625.



A182. Woodcut from Bartholomaeus, Anglicus *Le propriétaire des choses*, Lyon 1490.



A183. Engraving from title page of Ashmole *Theatrum Chemicum Britannicum*, 1652.



A184. Woodcut from Nazari, *Della tramutatione metallica sogni tre*, 1572.



A185. Title page engraving from Christoph Glasser, *Chimischer Wegweiser*, 1710.



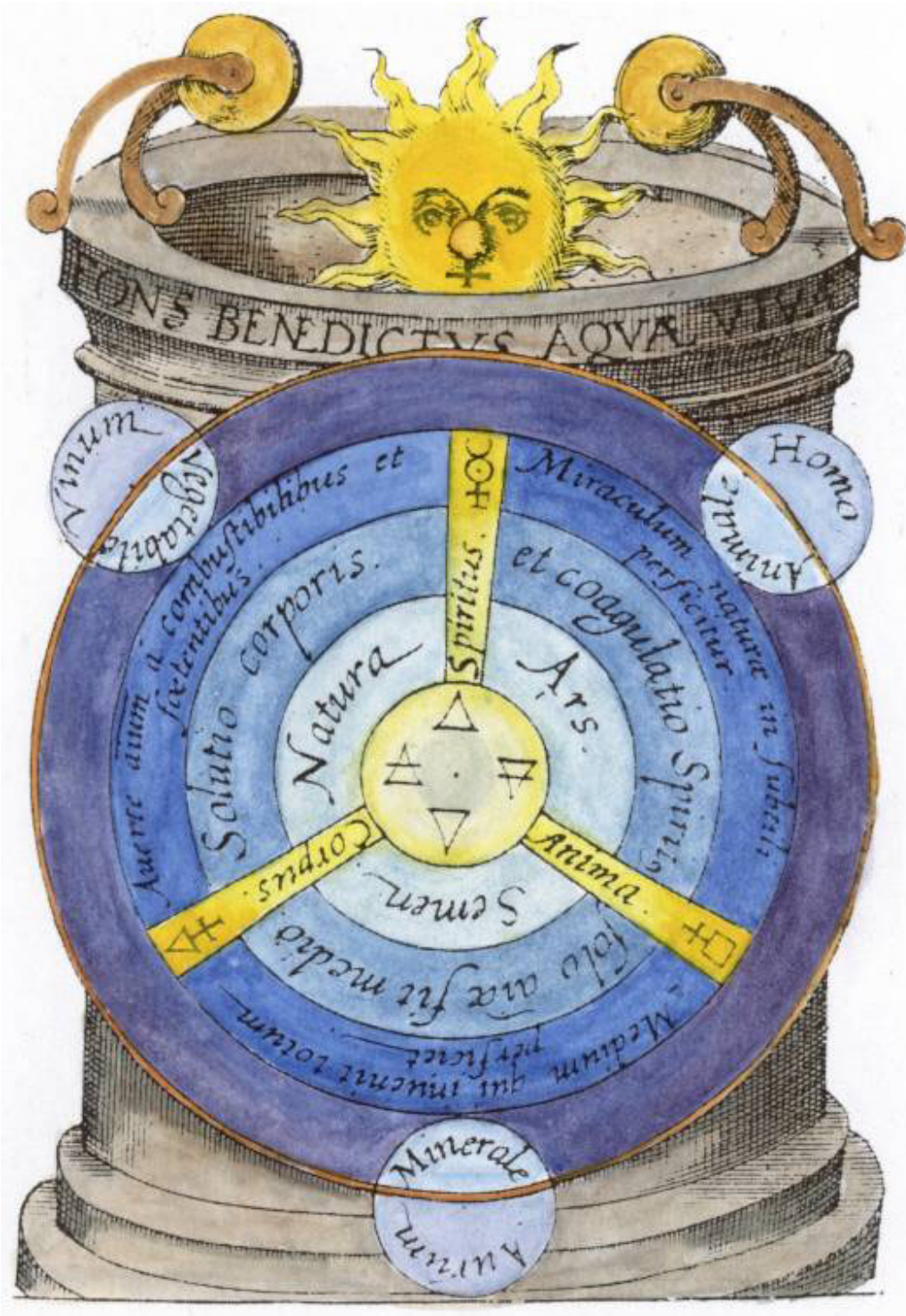
A186. Frontispiece engraving from J.J. Becher, *Tripus hermeticus fatidicus*, 1689.



A187. Woodcut from Johann Sternhals, *Ritter-Krieg...* Hamburg 1580.



A188. Part of engraved titlepage from Johann Rhenanus, *Solis e puteo emergentis*, Frankfurt, 1613



A189. Enraving from Johann Christoph von Ettner *Des getreuen Eckharts Entlauffener Chymicus*, Augsburg, 1697.



A190. Woodcut from *Hortus Sanitatis*, Strasbourg c. 1497.



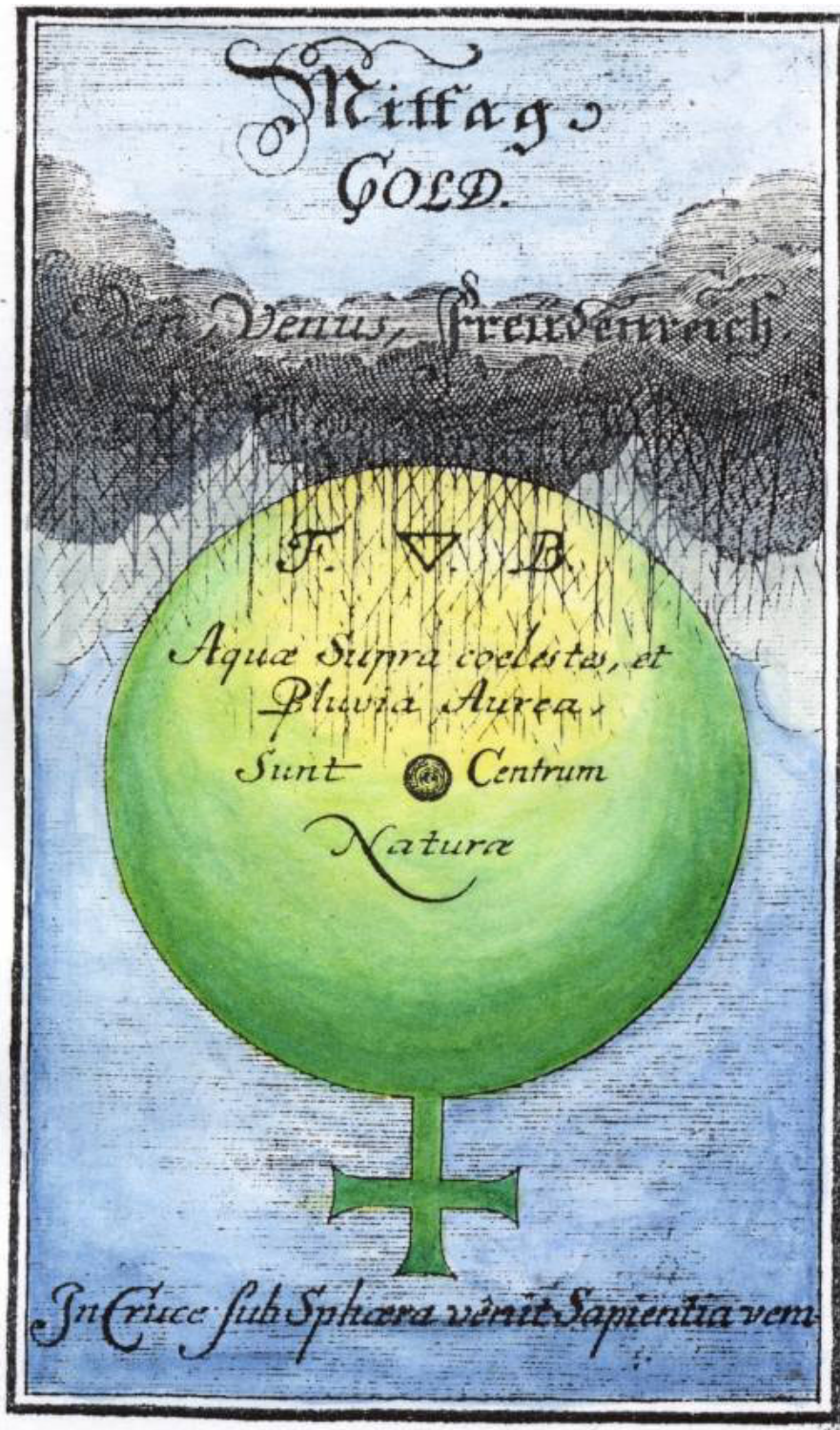
A191. Engraved frontispiece from Giambattista della Porta, *Magiae naturalis libri viginti*, Leiden 1644.



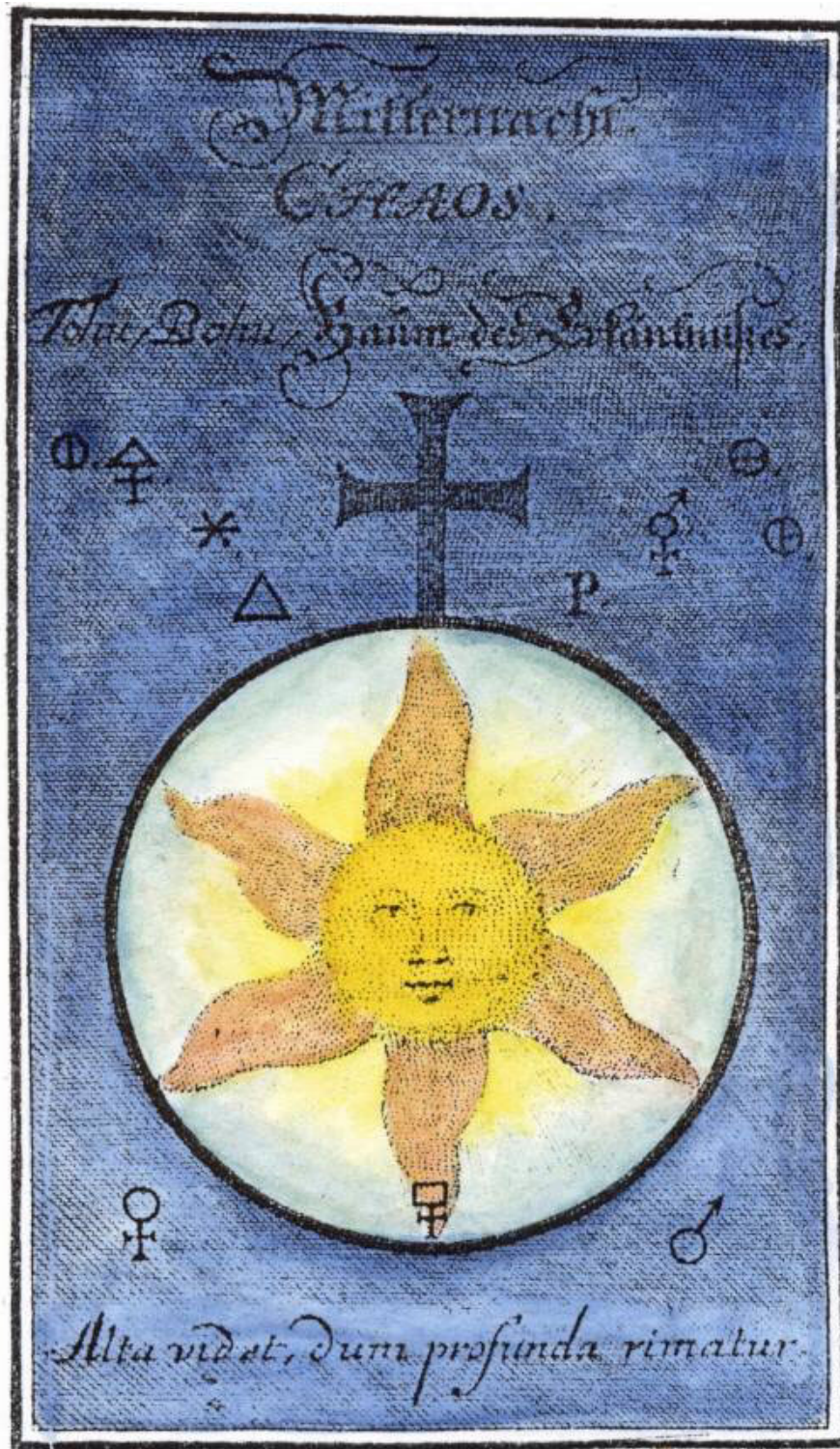
A192. Engraving from Maier *Septimana philosophica*, Franckfurt, 1620.



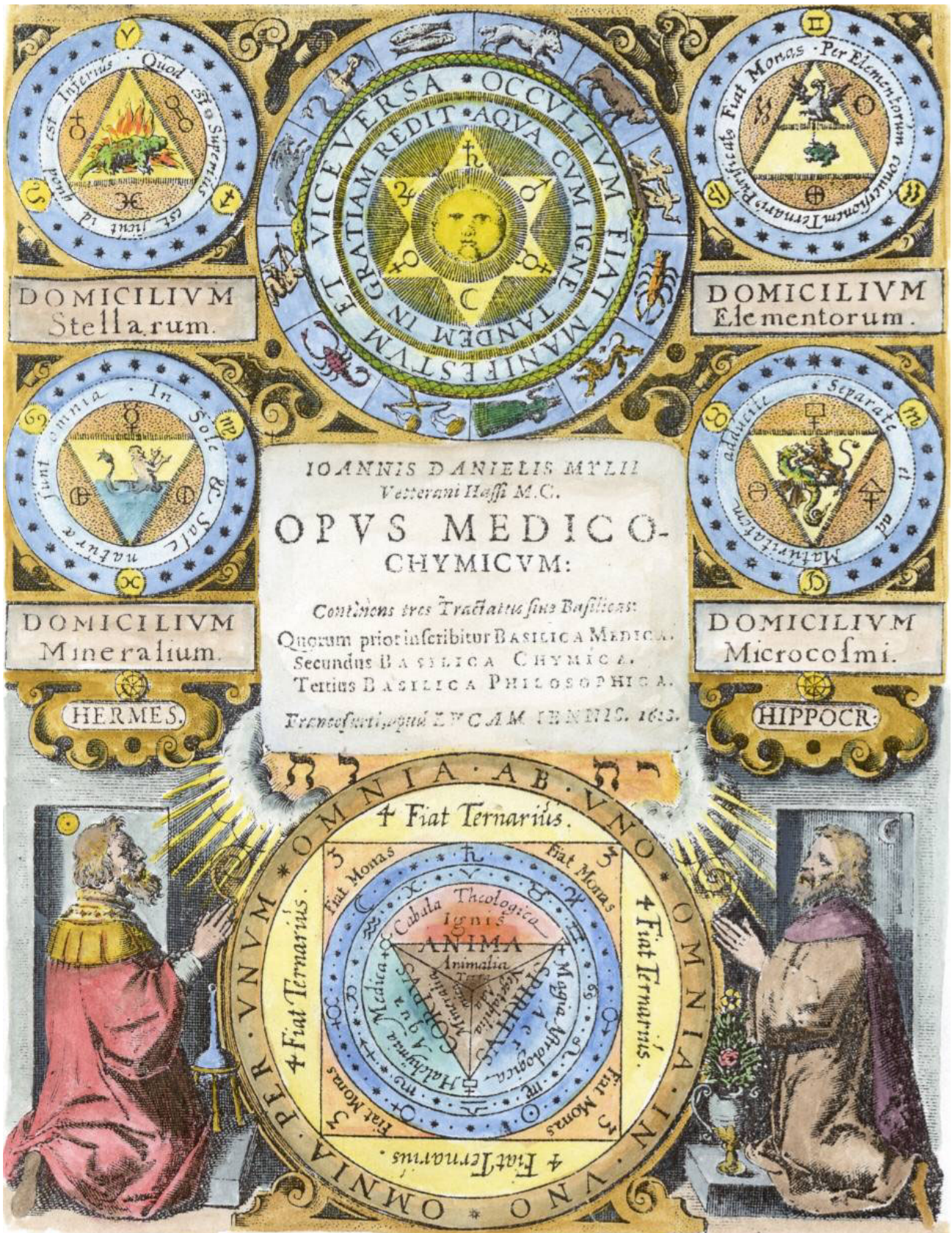
A193. Second engraved frontispiece from J.P. Maul *Gründliche Beschreibung des höchsten Kleinods der Welt*, Gotha 1714.



A194. First engraved frontispiece from J.P. Maul *Gründliche Beschreibung des höchsten Kleinods der Welt*, Gotha 1714.



A195. Engraved title page from J.D. Mylius *Opus Medico-chymicum*, Frankfurt, 1618.



A196. Woodcut from Brunschwygt, *Liber de arte distillandi*, Strasbourg, 1500.



A197. Engraved title page from Michael Maier *Arcana arcanissima*, 1614.



A198. Engraved title page from J Ziegler *Fermentatio, Generationis et Corruptionis causa*, Basel, 1647.



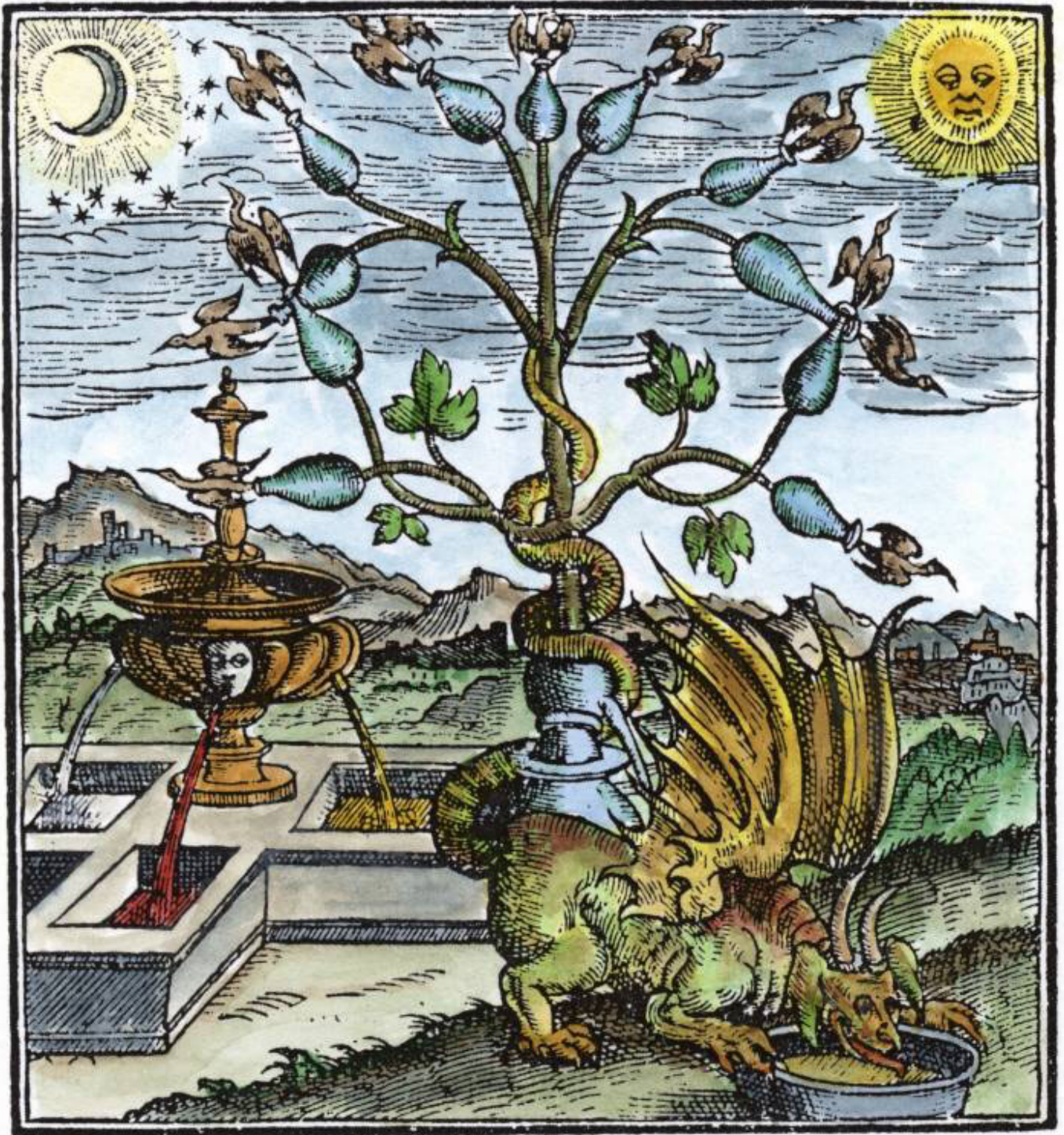
A199. Engraving from C Gesner, *The Practice of the New and Old Physicke*, London, 1599.



A200. Engraving from C Gesner, *The Practice of the New and Old Physicke*, London, 1599.



A201. Engraving from C Gesner, *The Practice of the New and Old Physicke*, London, 1599.

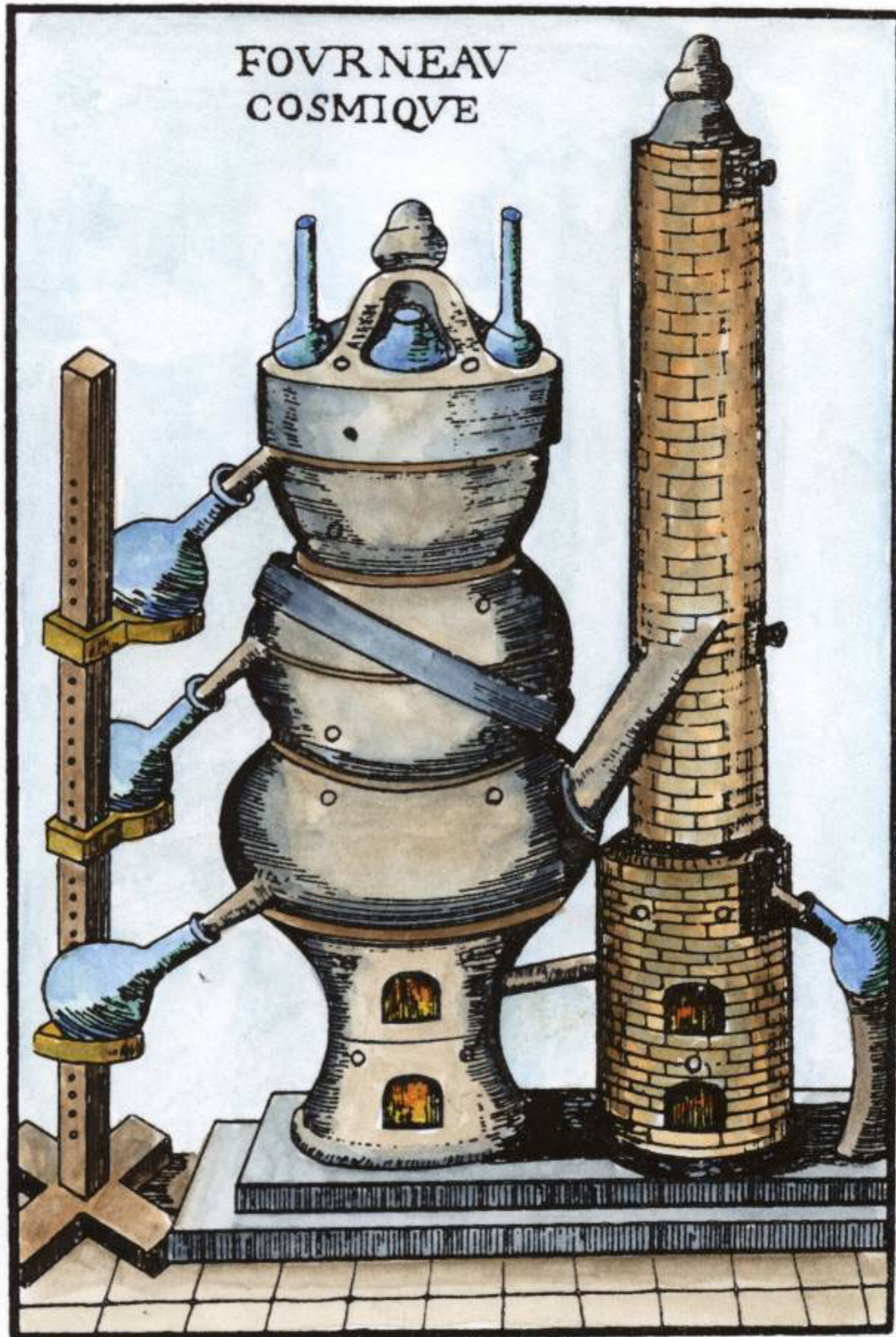




A203. Engraved title page from John Swan *Speculum Mundi*, Cambridge, 1644.



A204. Woodcut from Annibal Barlet, *Le vray et methodique cours...* Paris, 1651.



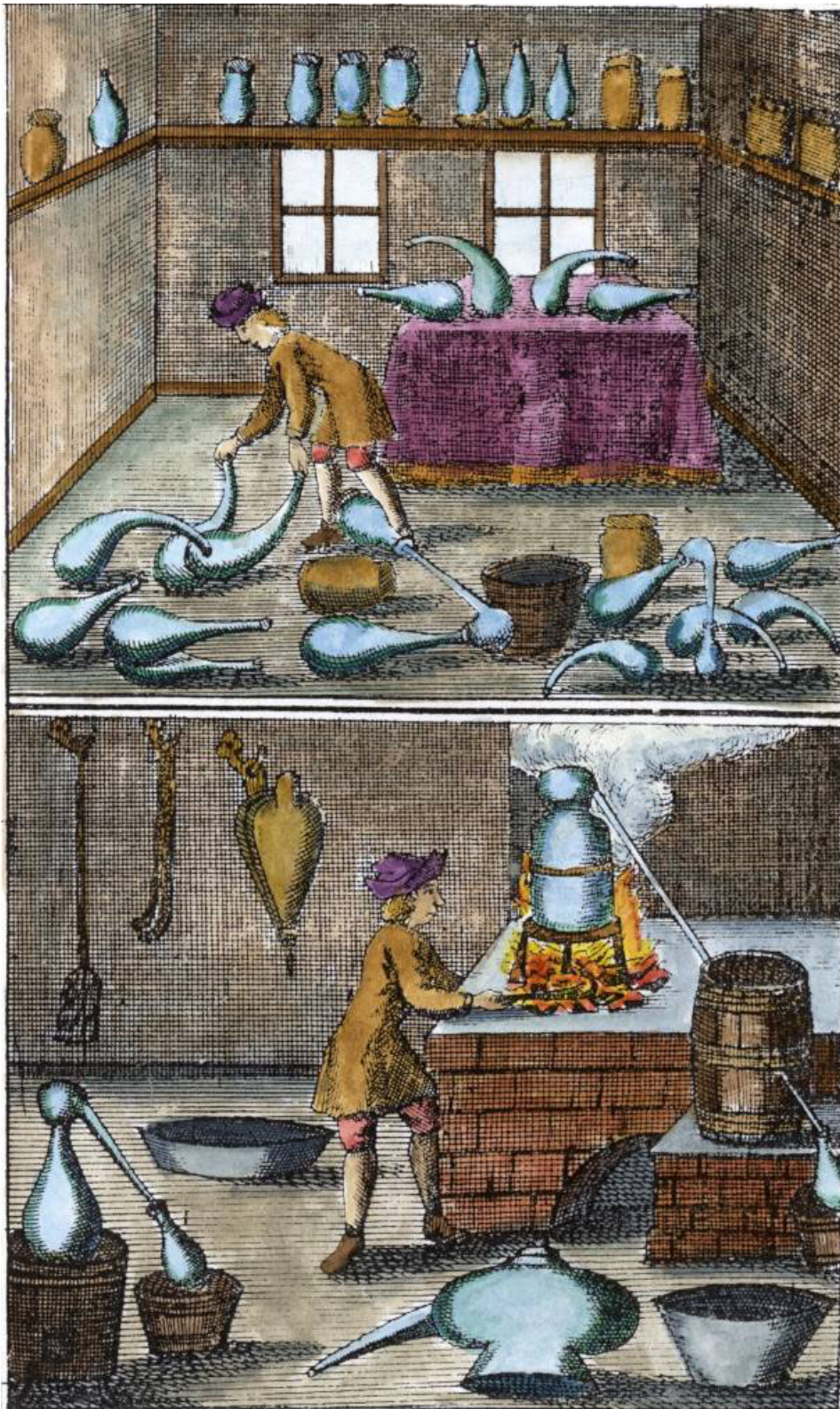
A205. Engraved titlepage from Georg Kirsten, *Adversaria et animadversiones in Iohannis Agricola*, Stettin, 1648.



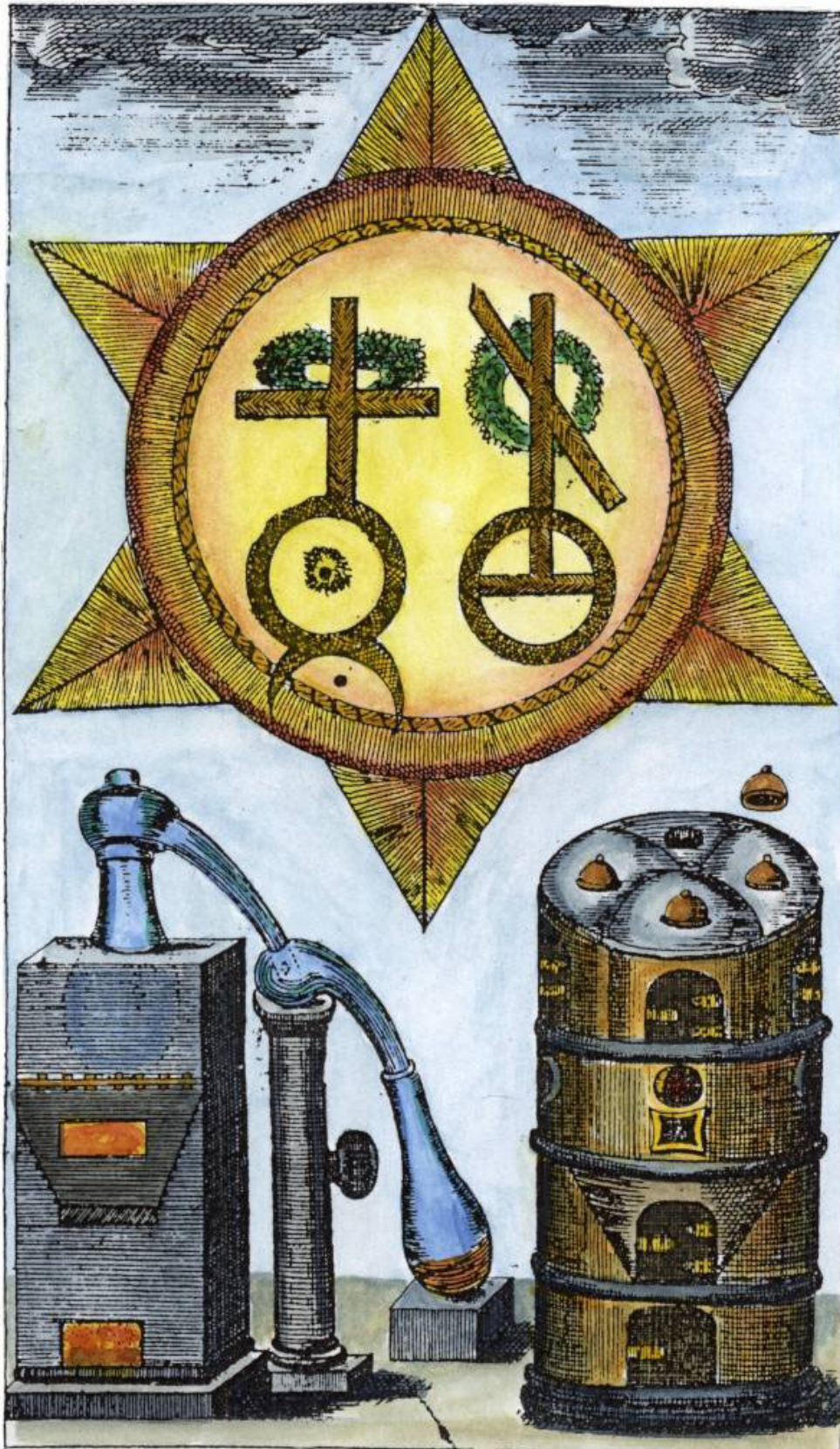
A206. Frontispiece engraving from David Beuther *Universal und Particularia*, Hamburg, 1718.



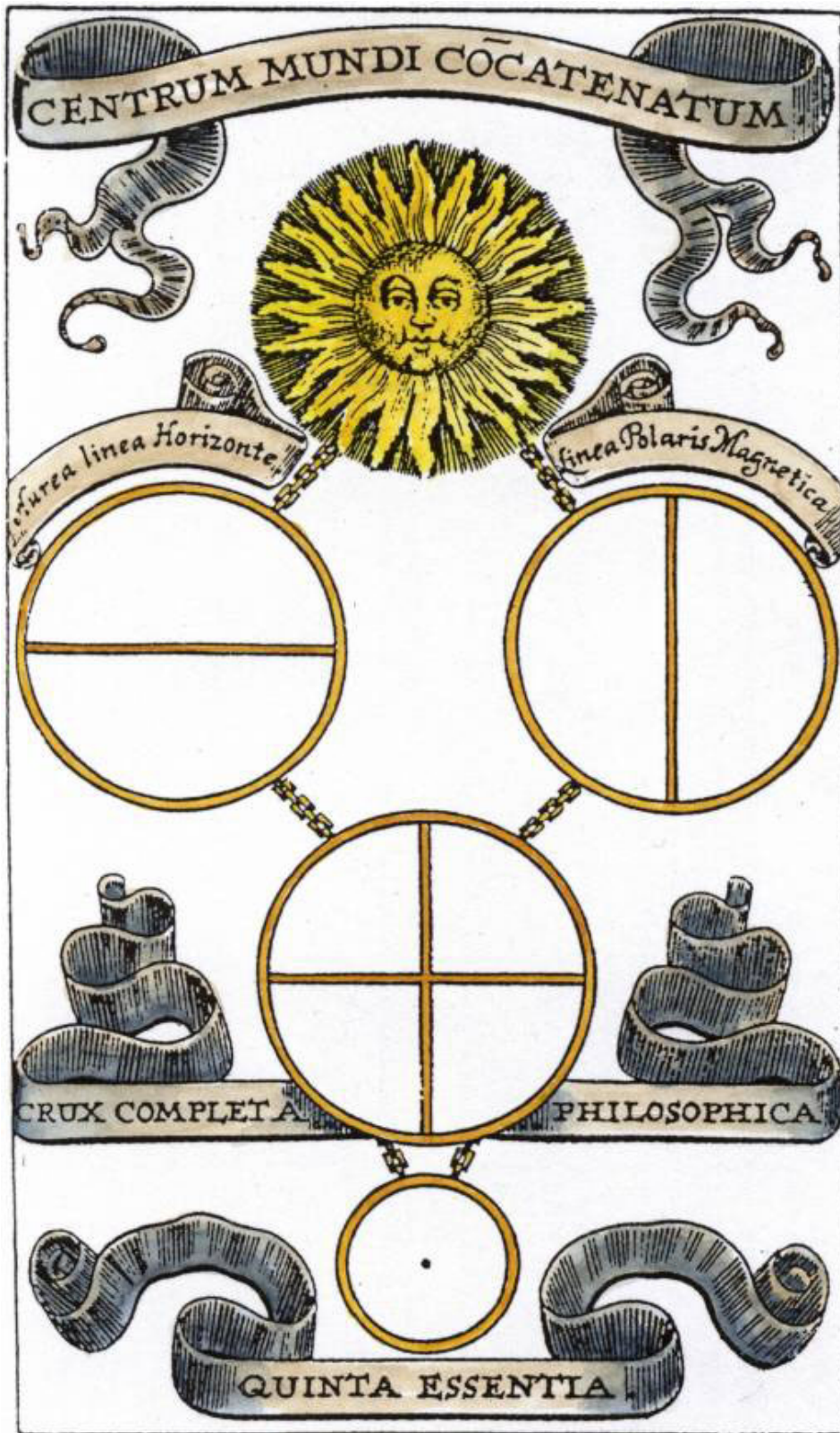
A207.



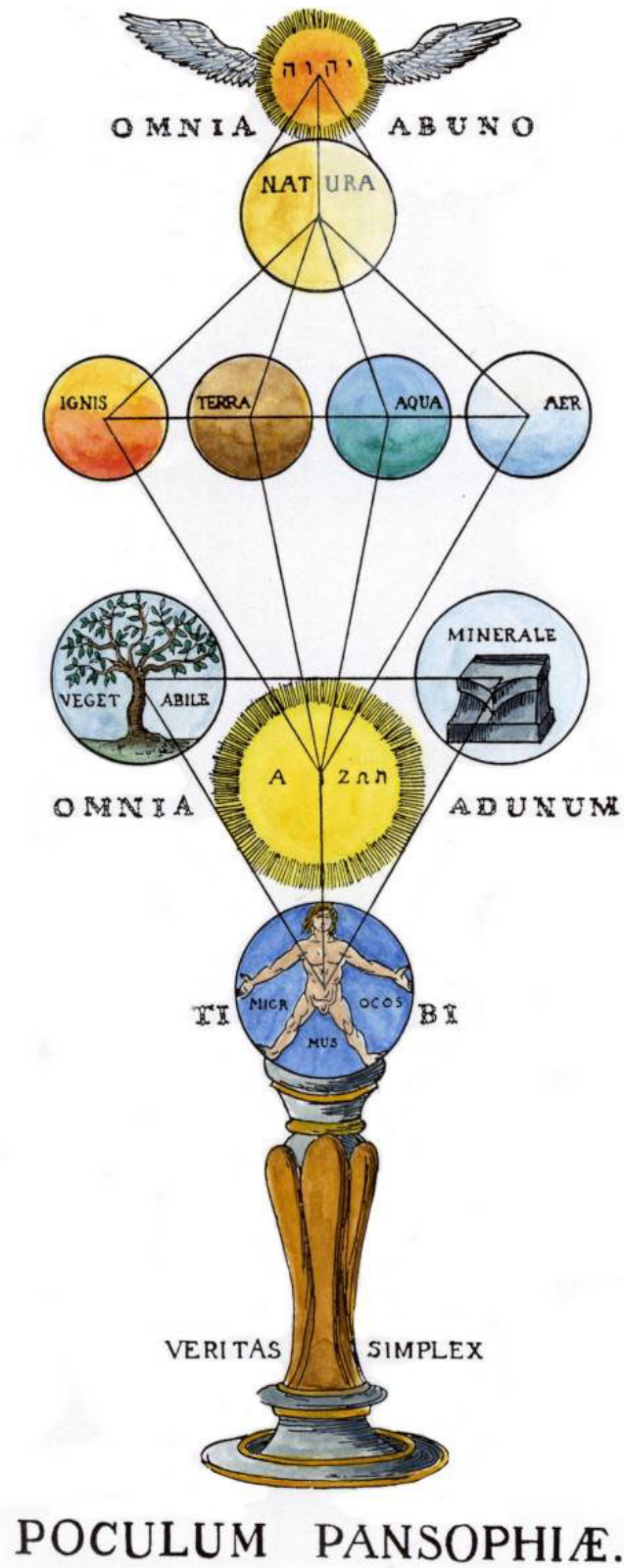
A209. Engraving from Fictuld, Herman. *Azoth et Ignis*. Leipzig, 1749.



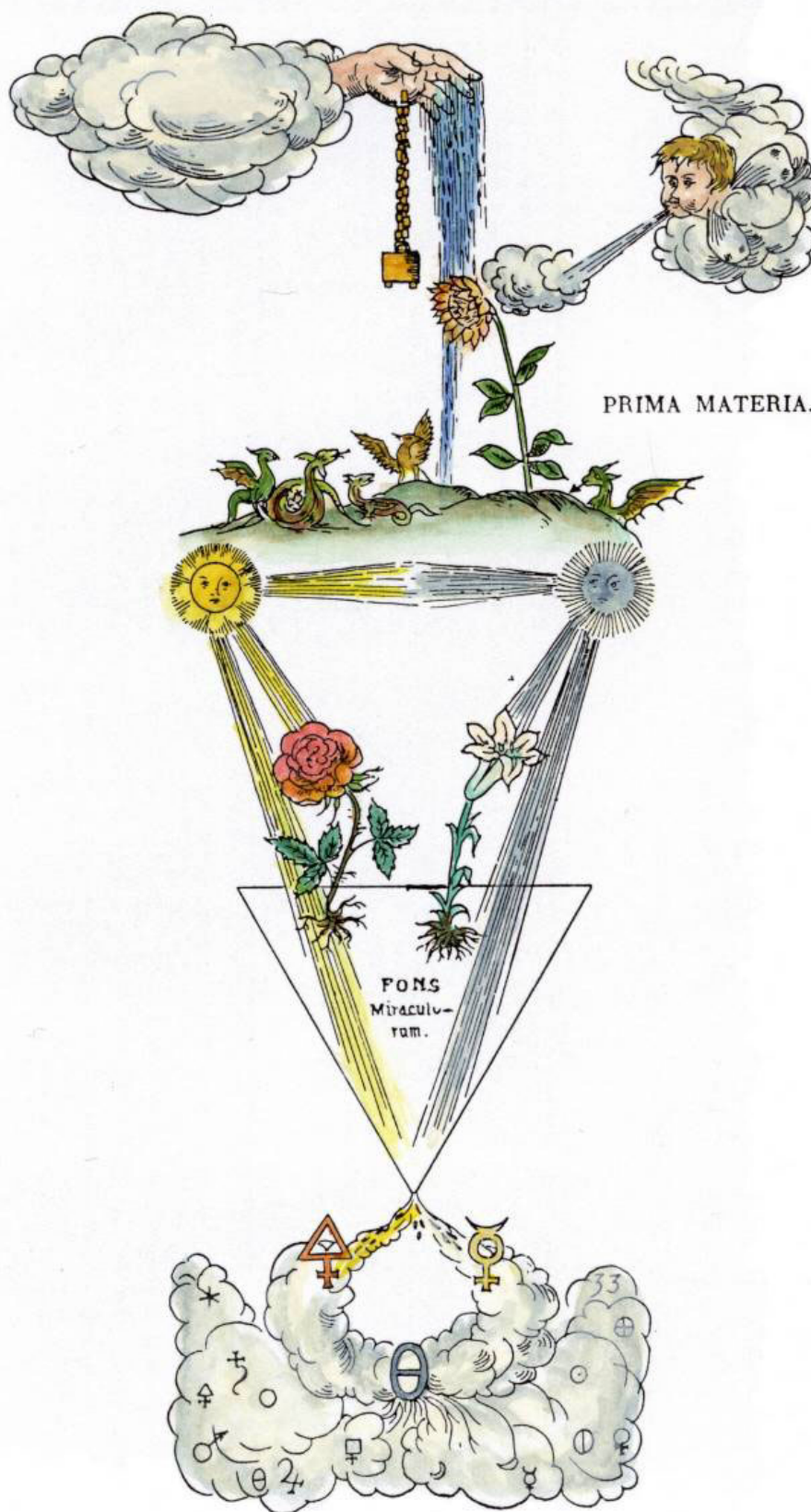
A210. Engraving from Johann Joachim Becher *Tripus hermeticus fatidicus*, Frankfurt, 1689.



A211. Engraving redrawn from *Die Lehren der Rosenkreuzer aus dem 16ten und 17ten Jahrhundert*. Altona, 1785.



A212. Engraving redrawn from *Die Lehren der Rosenkreuzer aus dem 16ten und 17ten Jahrhundert*. Altona, 1785.



A213. Engraving from Basil Valentine, *Chymische Schriften*. Hamburg, 1717.



A214. Engraved title page from Libavius *Syntagmatis selectorum...* Frankfurt 1613 (reused from *Alchymia...* 1605.)



A215. Frontispiece engraving from Adolph Christoph Bentz *Philosophische Schau-Bühne*, Nurnberg, 1706.



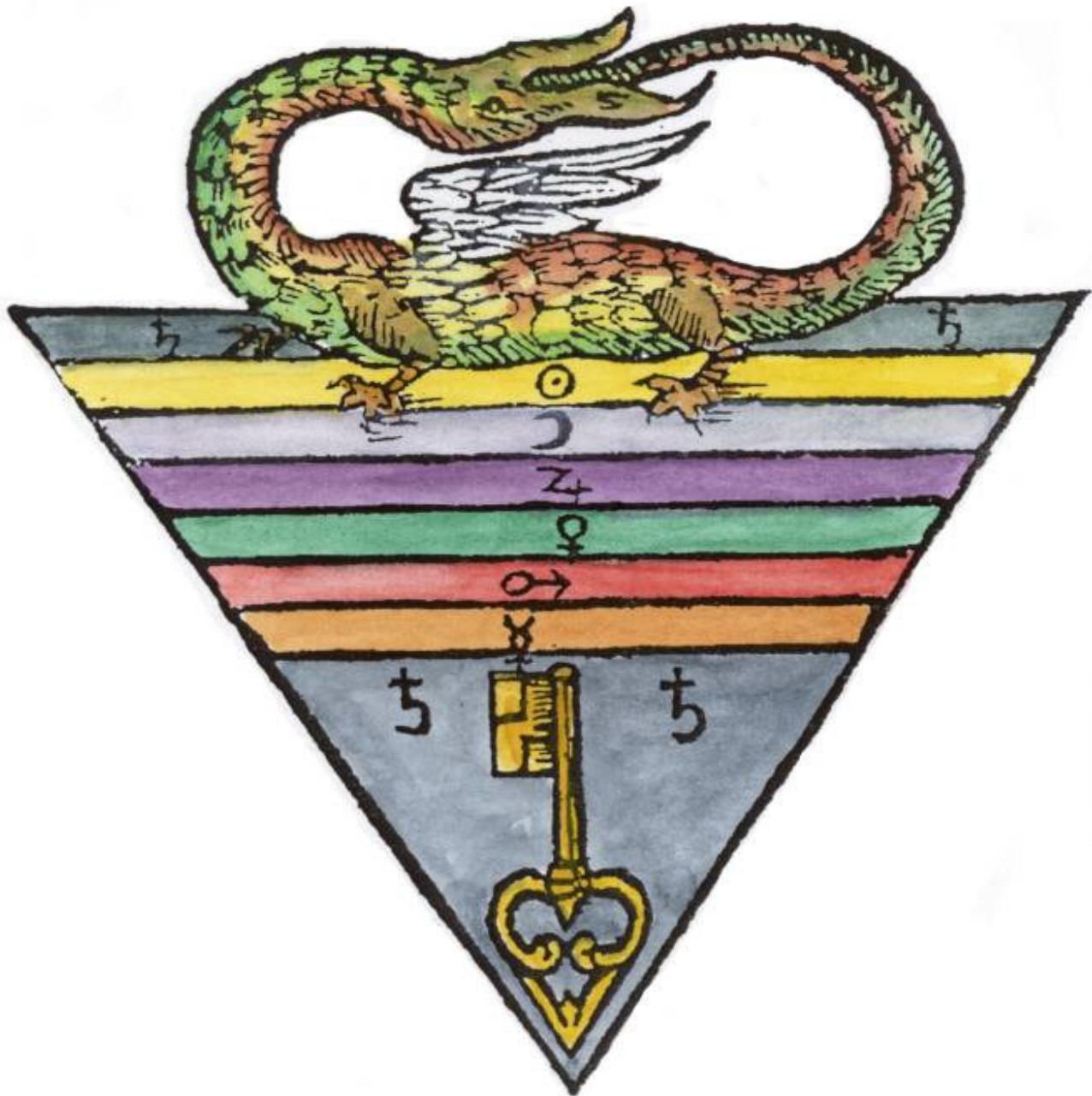
A216. Engraving from Franz Clinge *Ein Richtiger-Wegweiser...* Berlin, 1701.



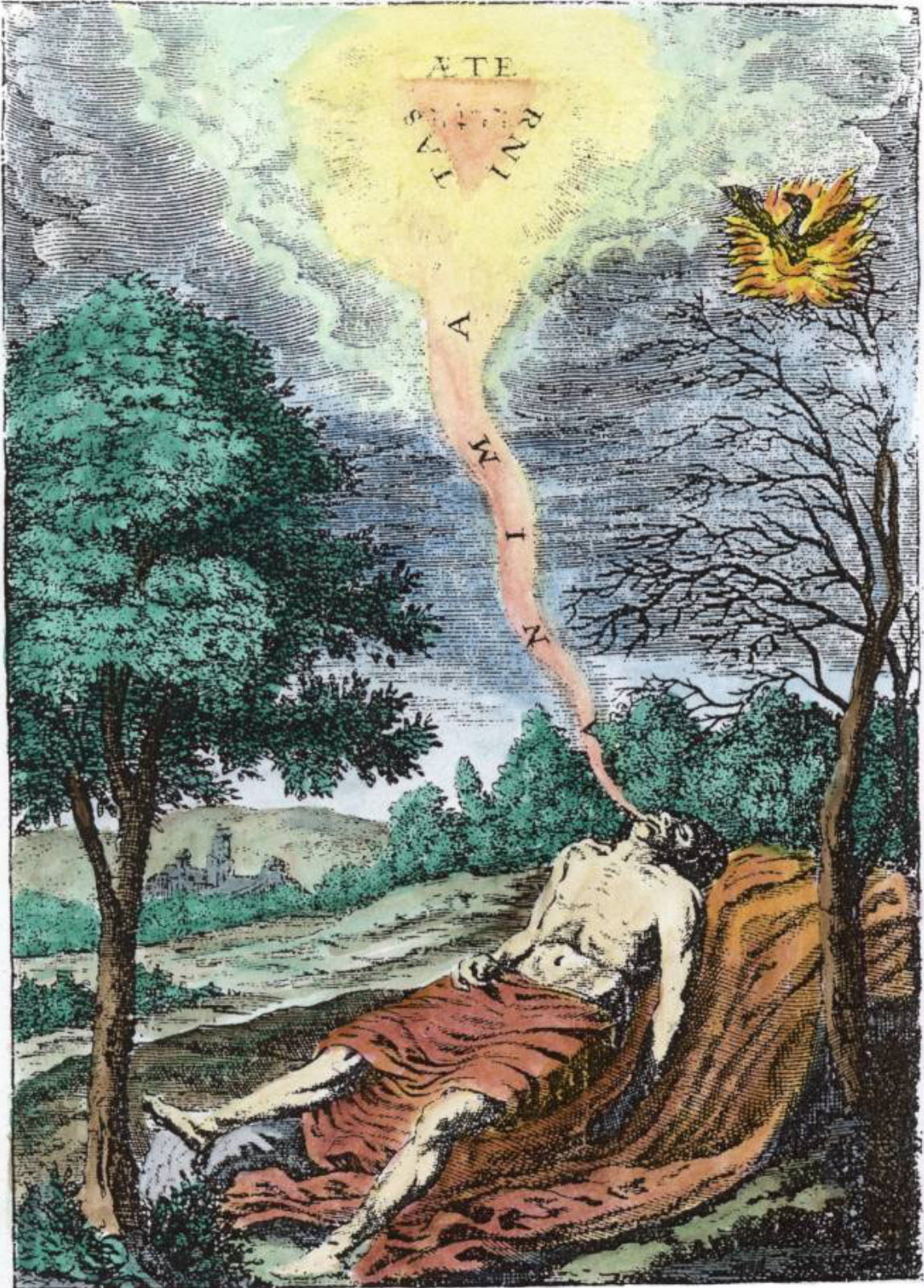
A217. Frontispiece engraving from *Der curieuses Kunst- und Werck-Schuel*, Nurnberg, 1696.



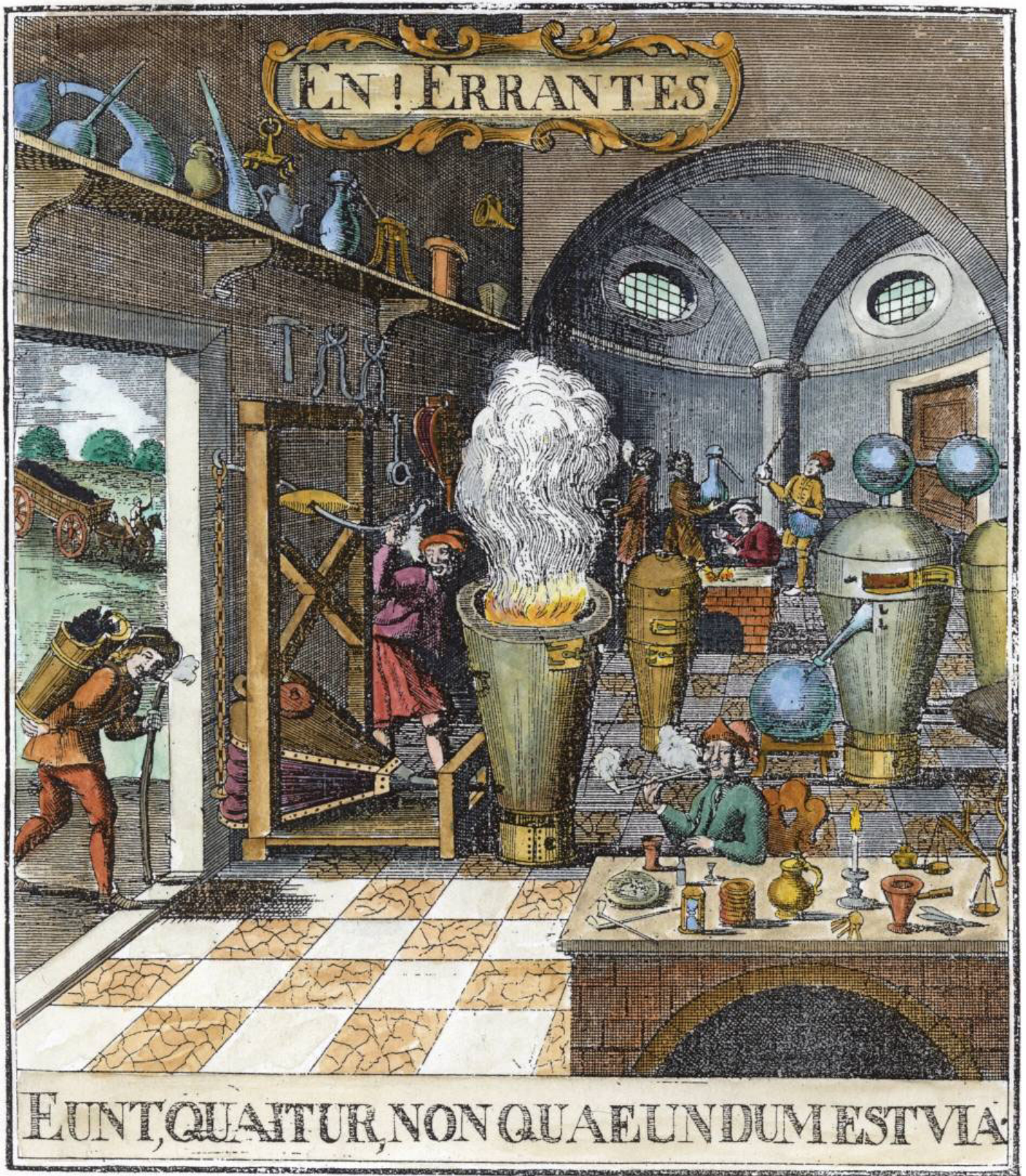
A218. Woodcut from Toeltius *Coelum reseratum chymicum*... Frankfurt, 1737.

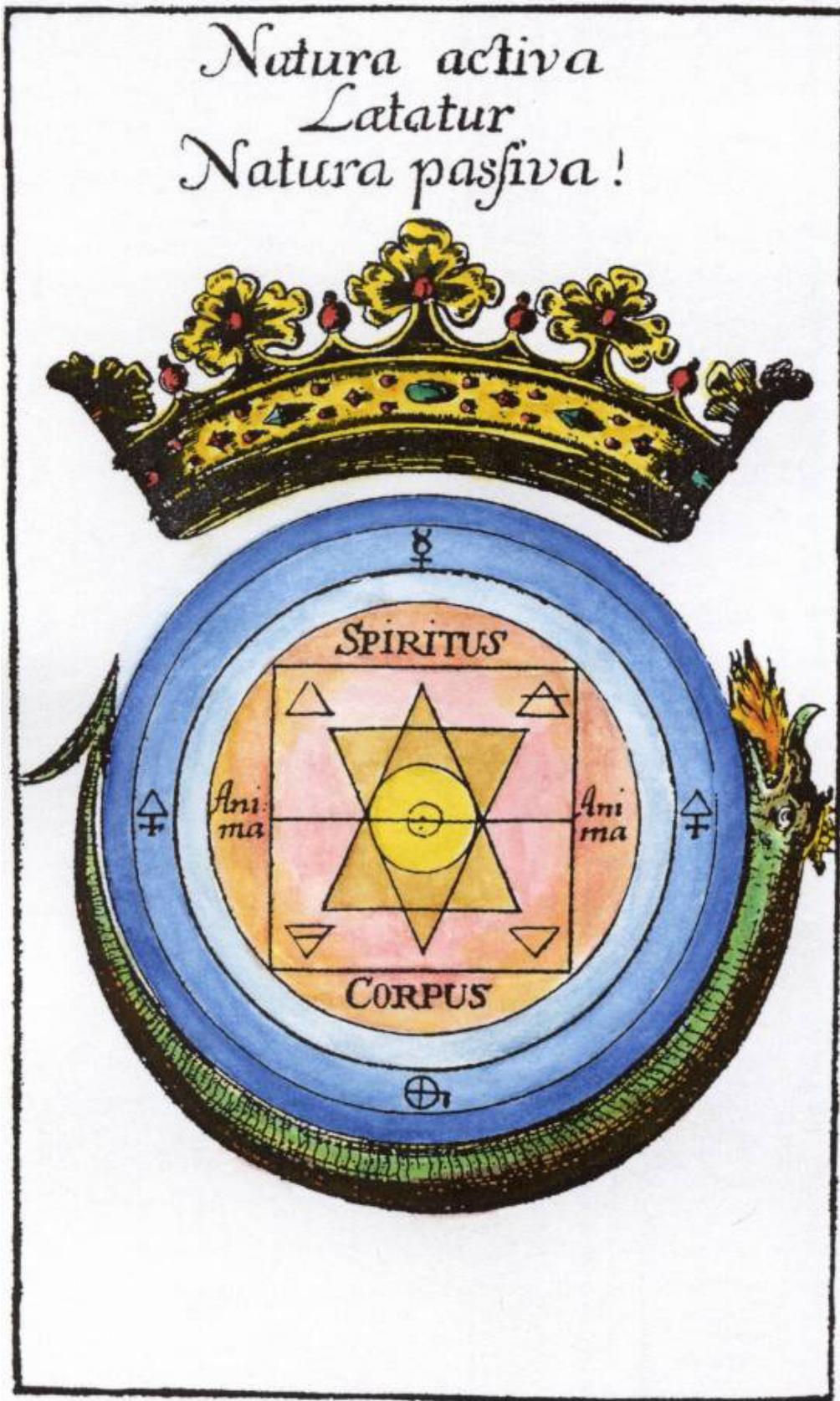


A219. Frontispiece from Kenelm Digby, *Demonstratio immortalitatis animae rationalis*, Frankfurt 1664.



A220. Engraved frontispiece *Falscher und wahrer Lapis Philosophorum*, Frankfurt, 1752.

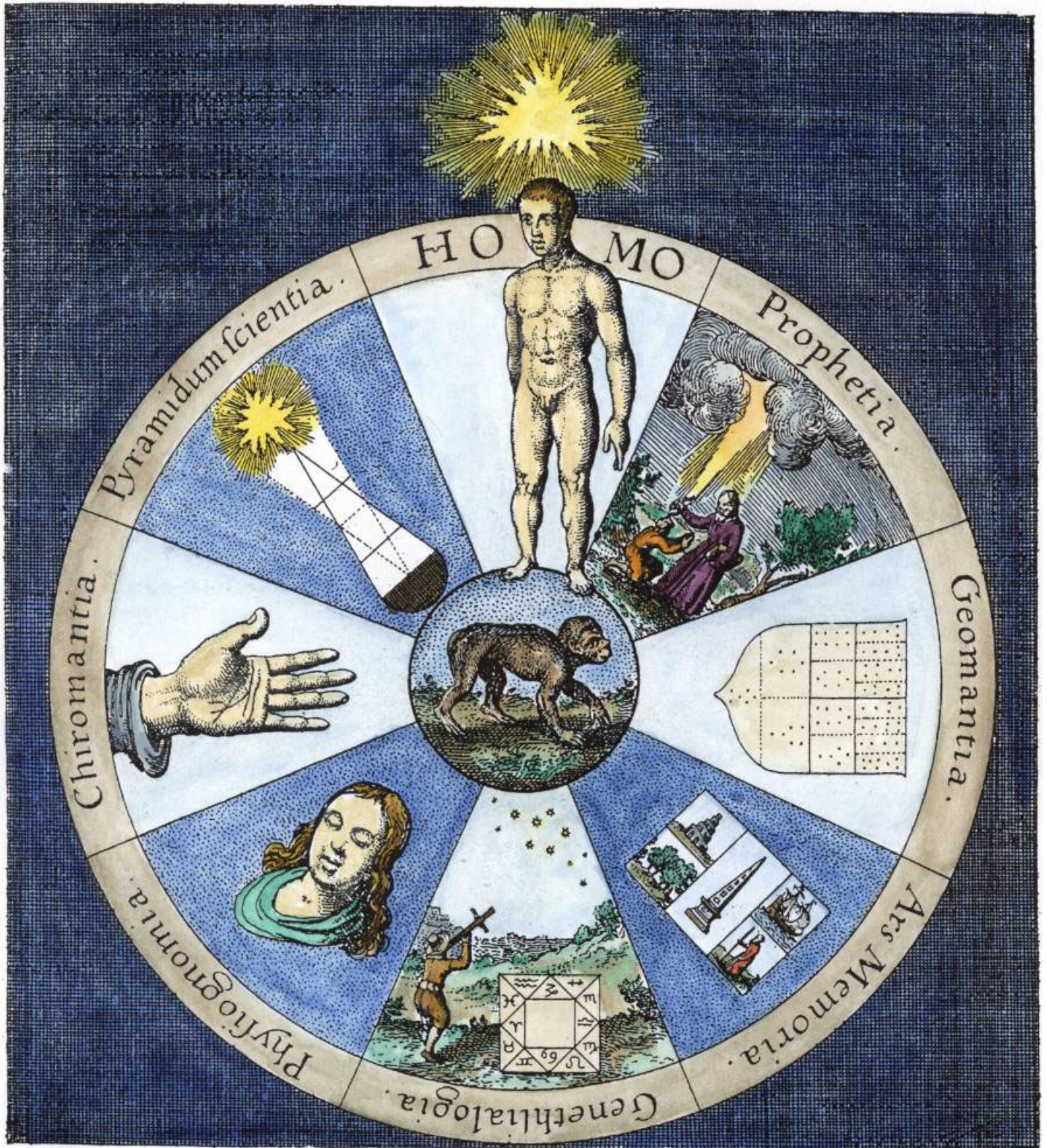




A222. Engraving on titlepage of Hiebner von Schneebergk *Mysterium Sigillorum*, Erfurt, 1696.



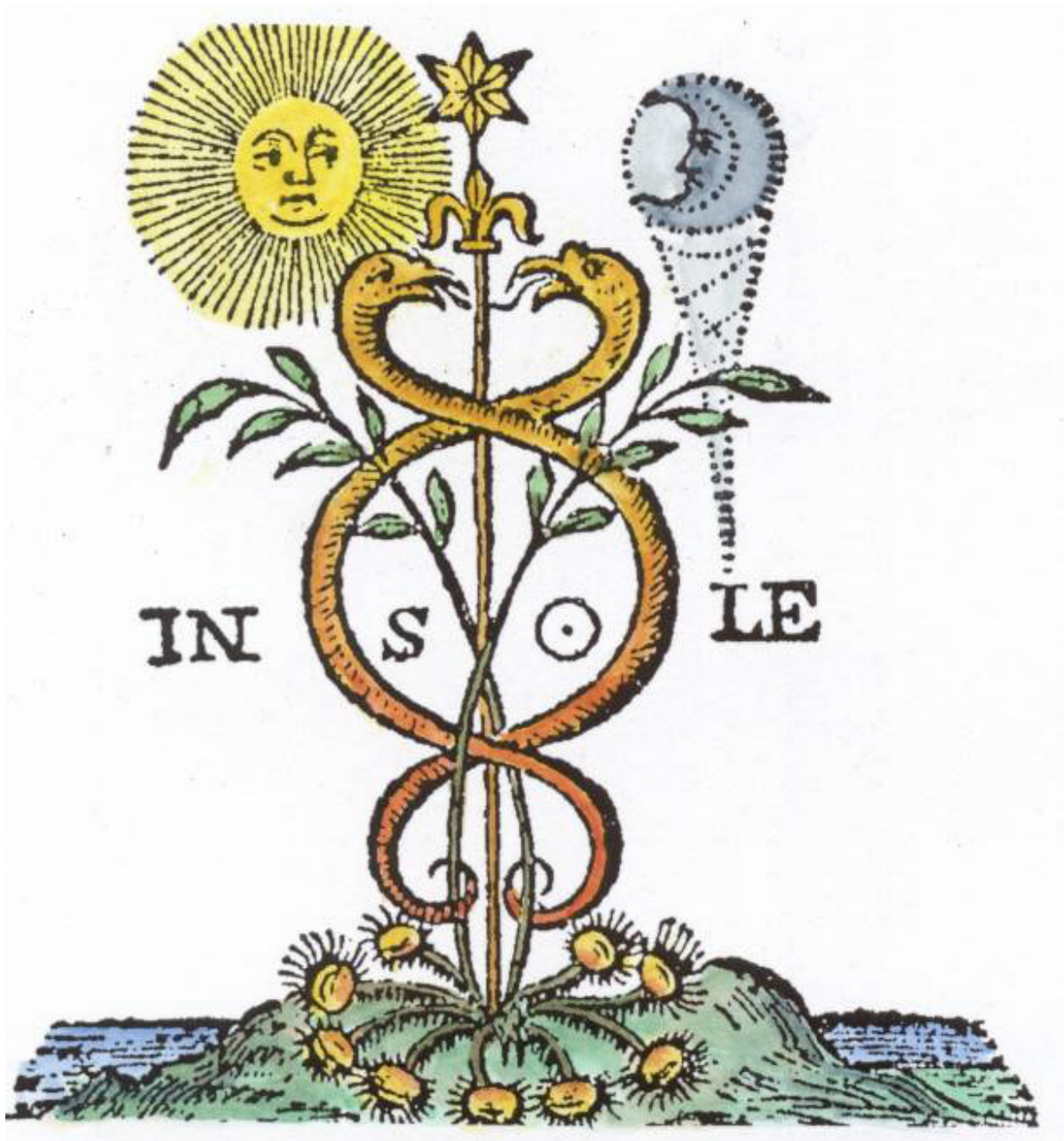
A223. Engraving from titlepage Robert Fludd, *Utriusque cosmi historia*, Tome II, Oppenheim 1620.



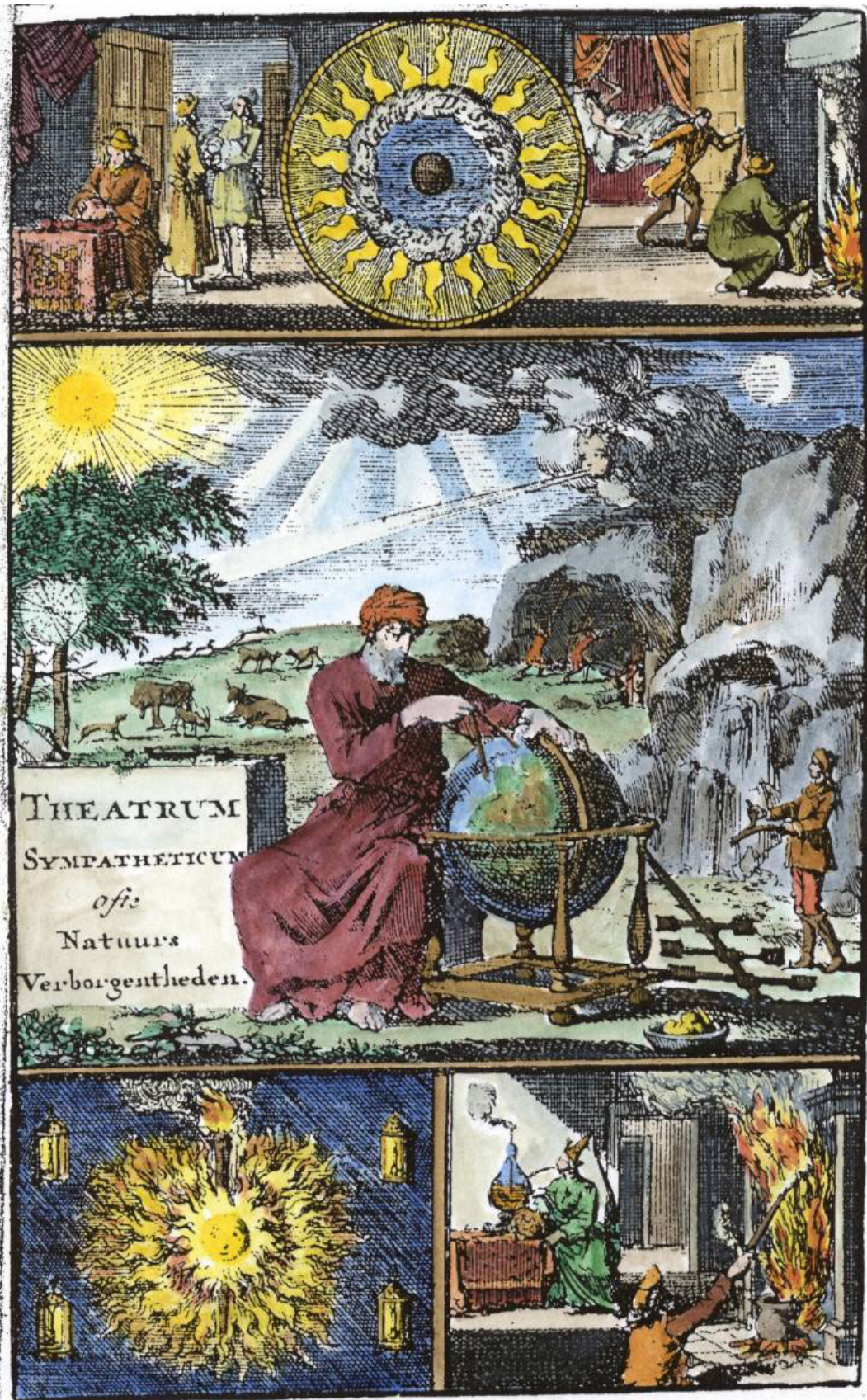
A224. Woodcut title page from Hieronymus Braunschweig, *Distilierbuch der rechten Kunst*, 1552.



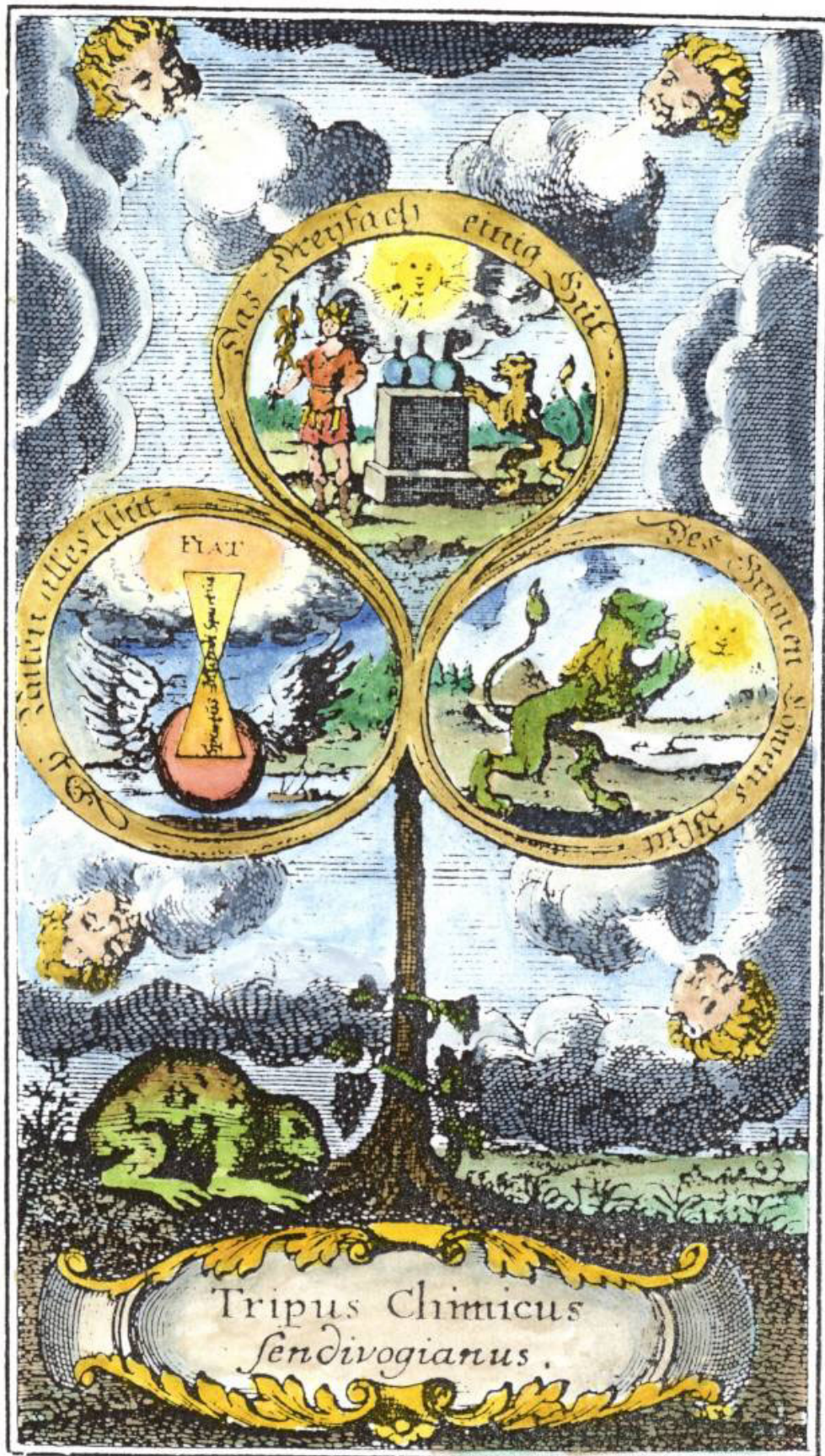
A225. Woodcut on title page of *Das Geheimniss der hermetischen Philosophie*, Frankfurt and Leipzig, 1770.



A226. Frontispiece from *Theatrum Sympateticum* Amsterdam, 1727.

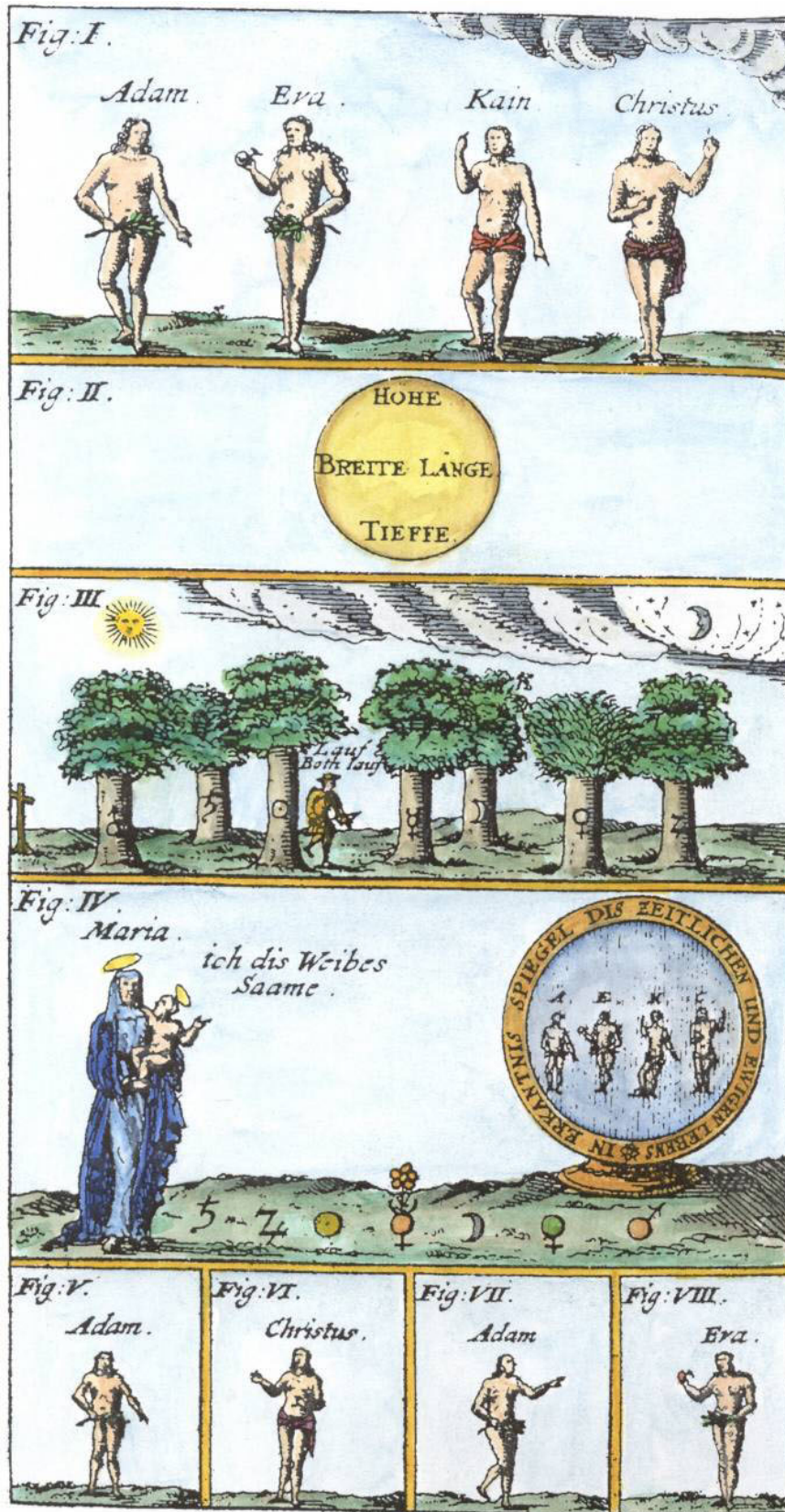


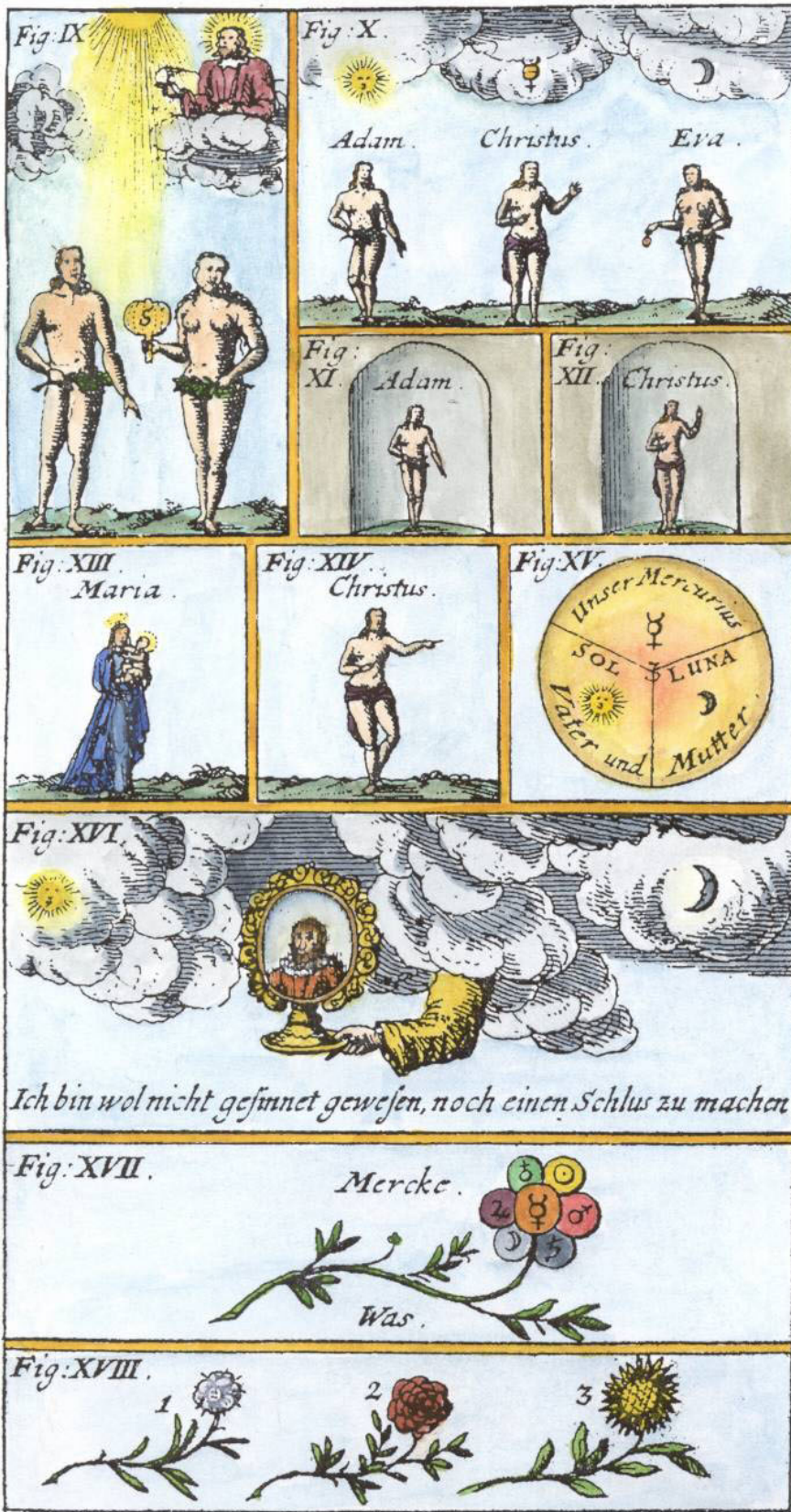
A227. Frontispiece from Michael Sendivogius, *Chymische Schrifften*, Vienna, 1750.

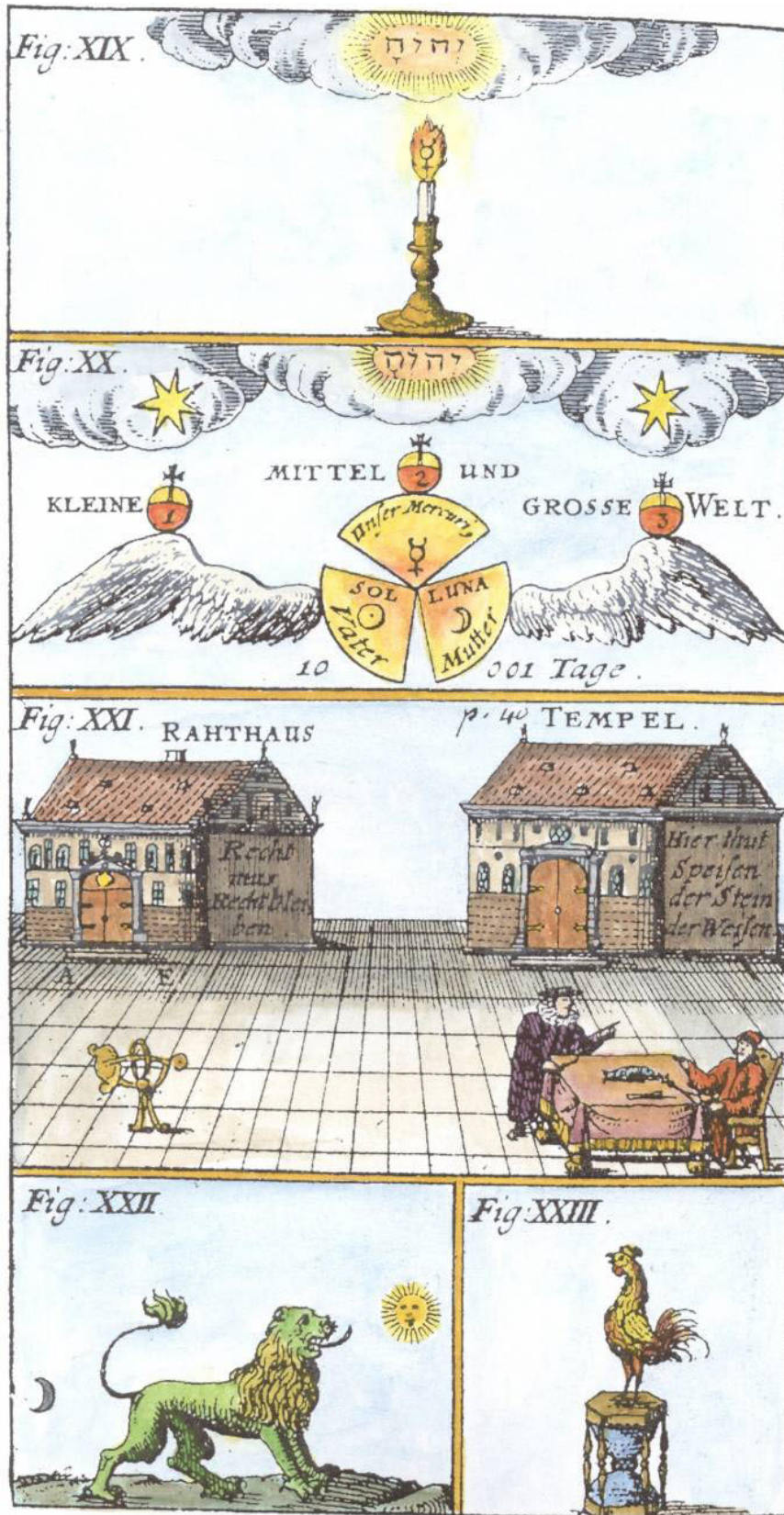


A228. Frontispiece engraving from Bernard Trevisanus *Chymische Schrifften* Nurnberg, 1747.







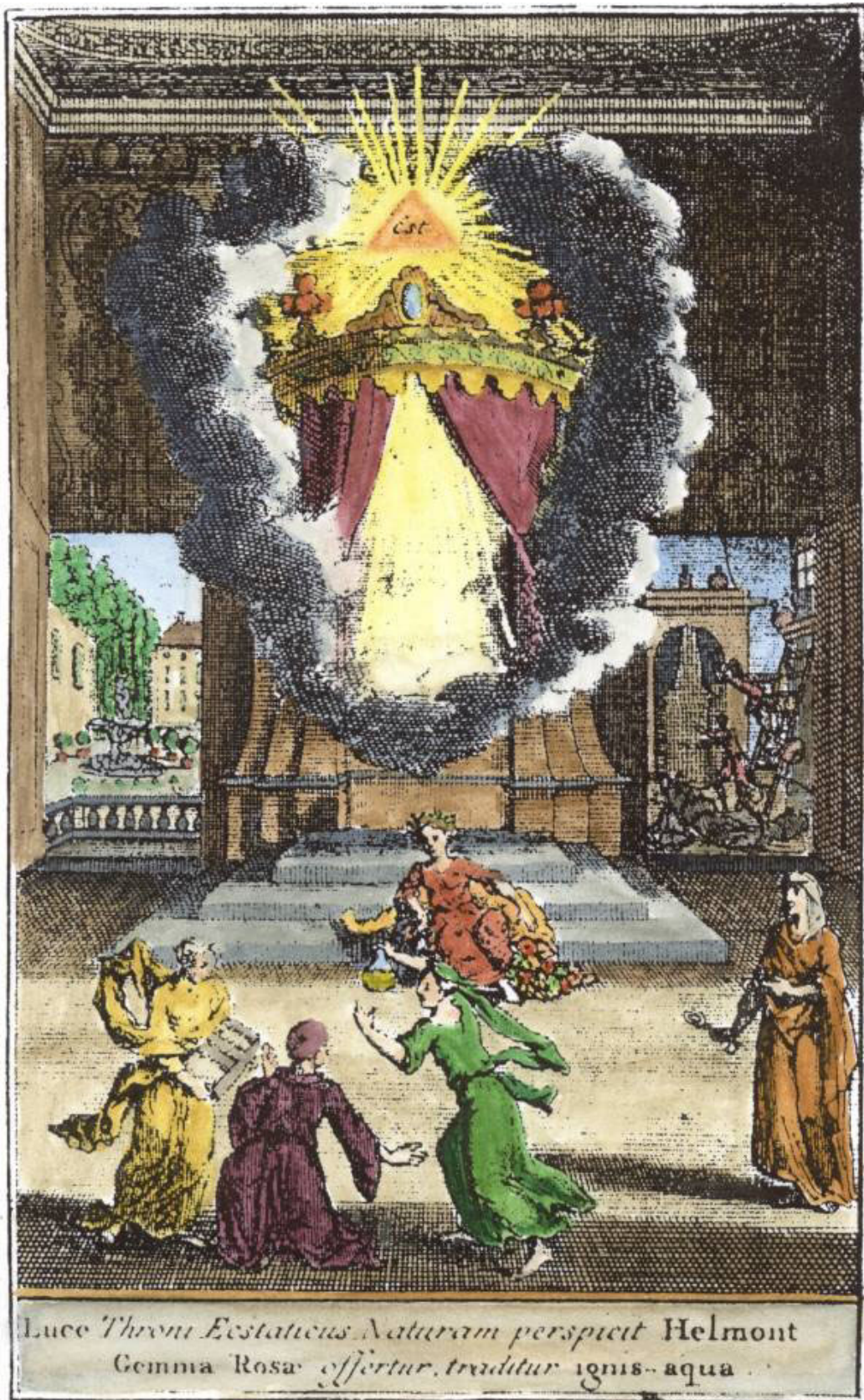




A233. Frontispiece engraving from Johann Heinrich Cohausen *Lumen Novum Phosphoris Accensum* Amsterdam 1717.



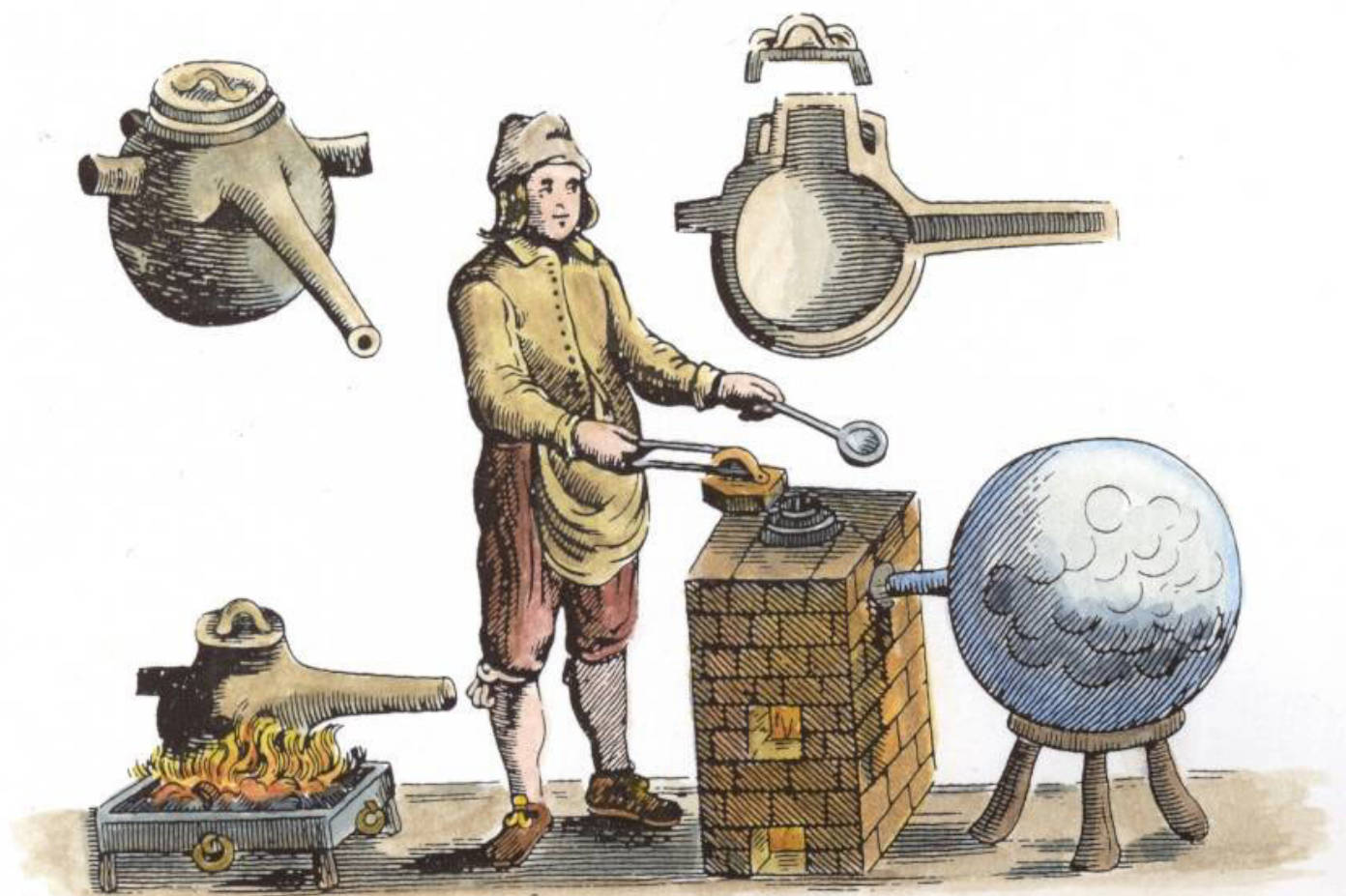
A234. Frontispiece engraving from Johann Heinrich Cohausen *Helmontius ecstaticus* Amsterdam, 1731.



A235. Engraving from Giambattista della Porta *Magia Naturalis* Nuremberg, 1680.



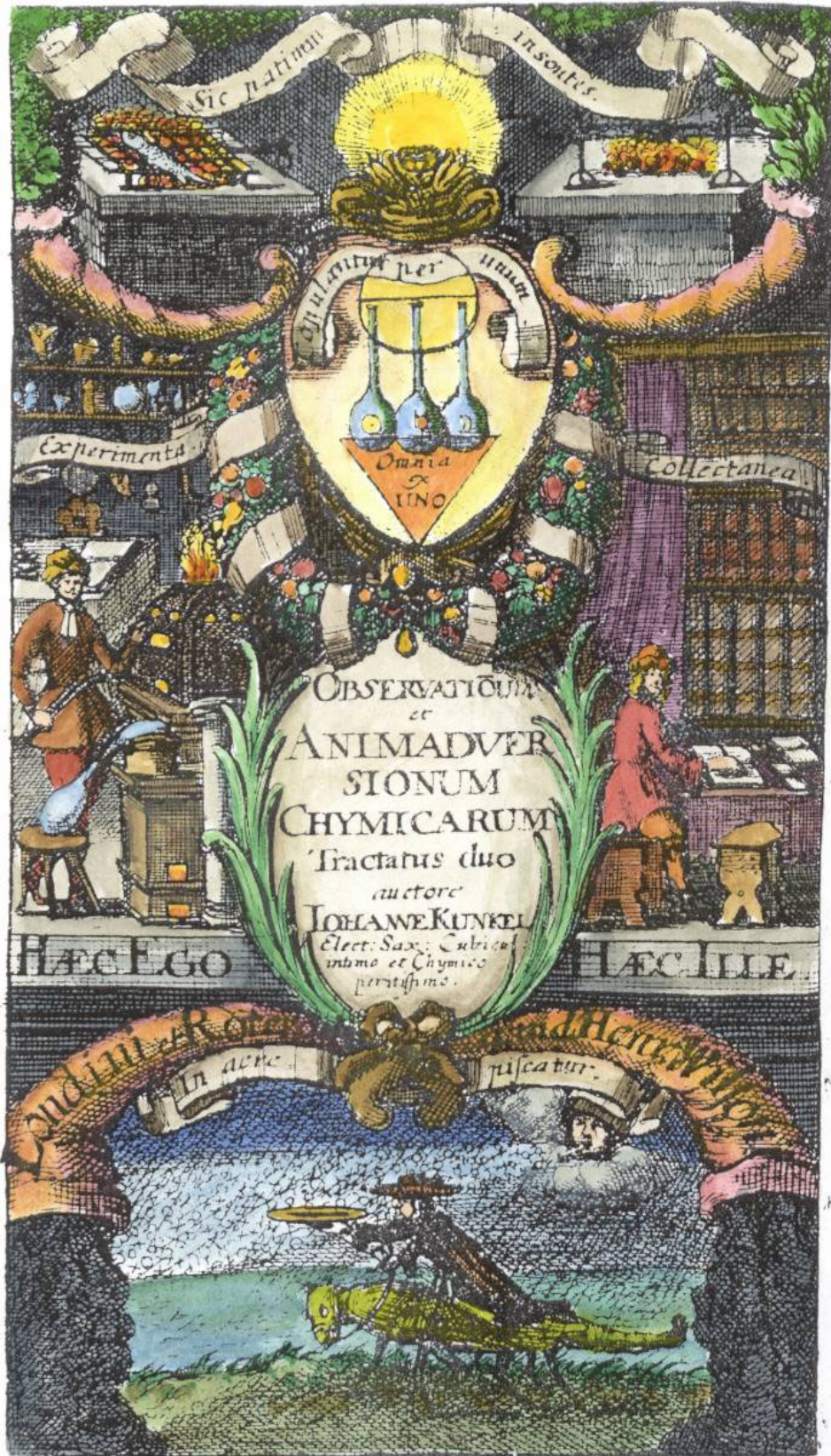
A236. Engraving from Glauber *Furni novi philosophici* Amsterdam, 1651.



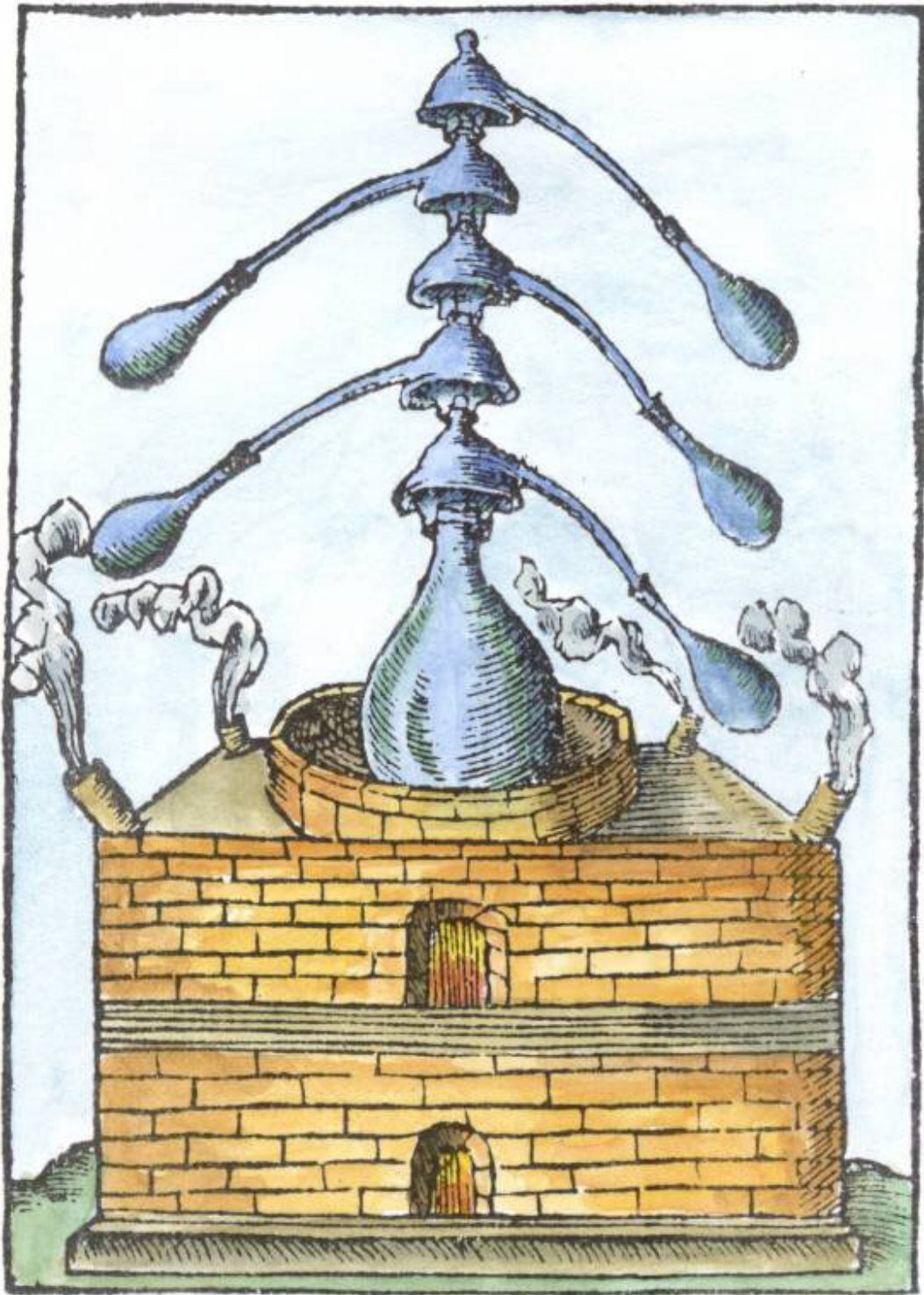
A237. Engraving from Felix Maurer *Observationes Curioso-Physicae* Frankfurt and Leipzig, 1713.



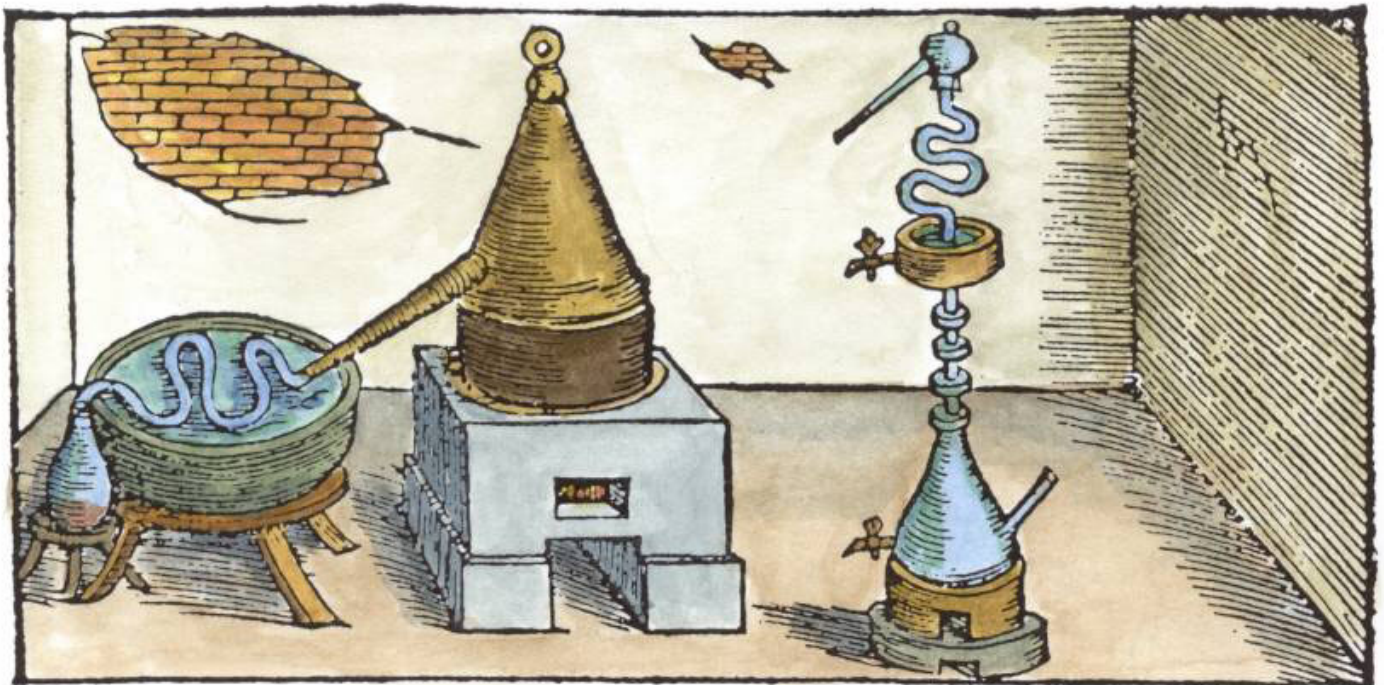
A238. Frontispiece engraving from Johannes Kunckel *Observationes Chymicae* London and Rotterdam, 1678.



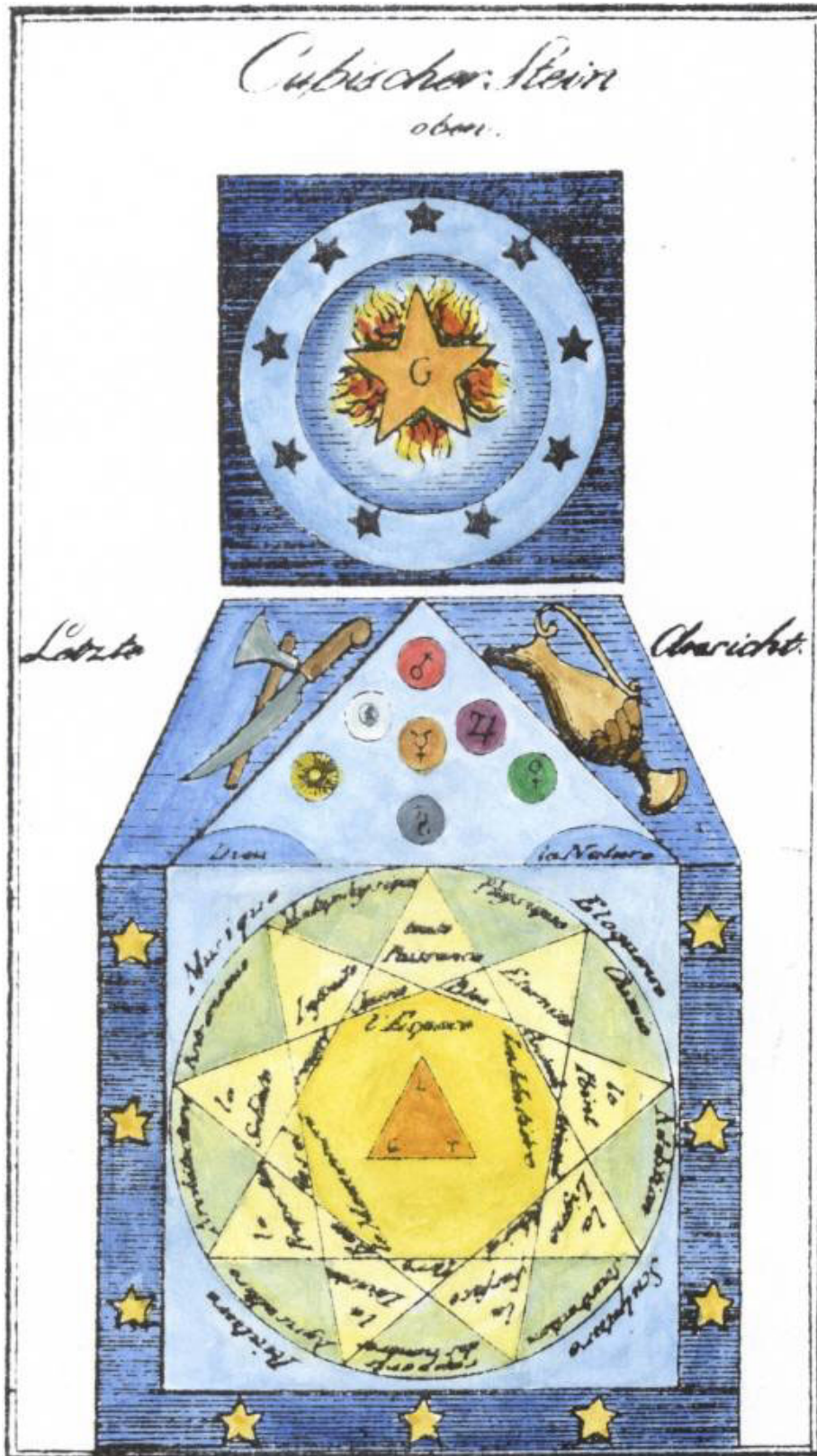
A239. Woodcut from Philipp Ulstad *Coelum philosophorum* Lyon, 1553.



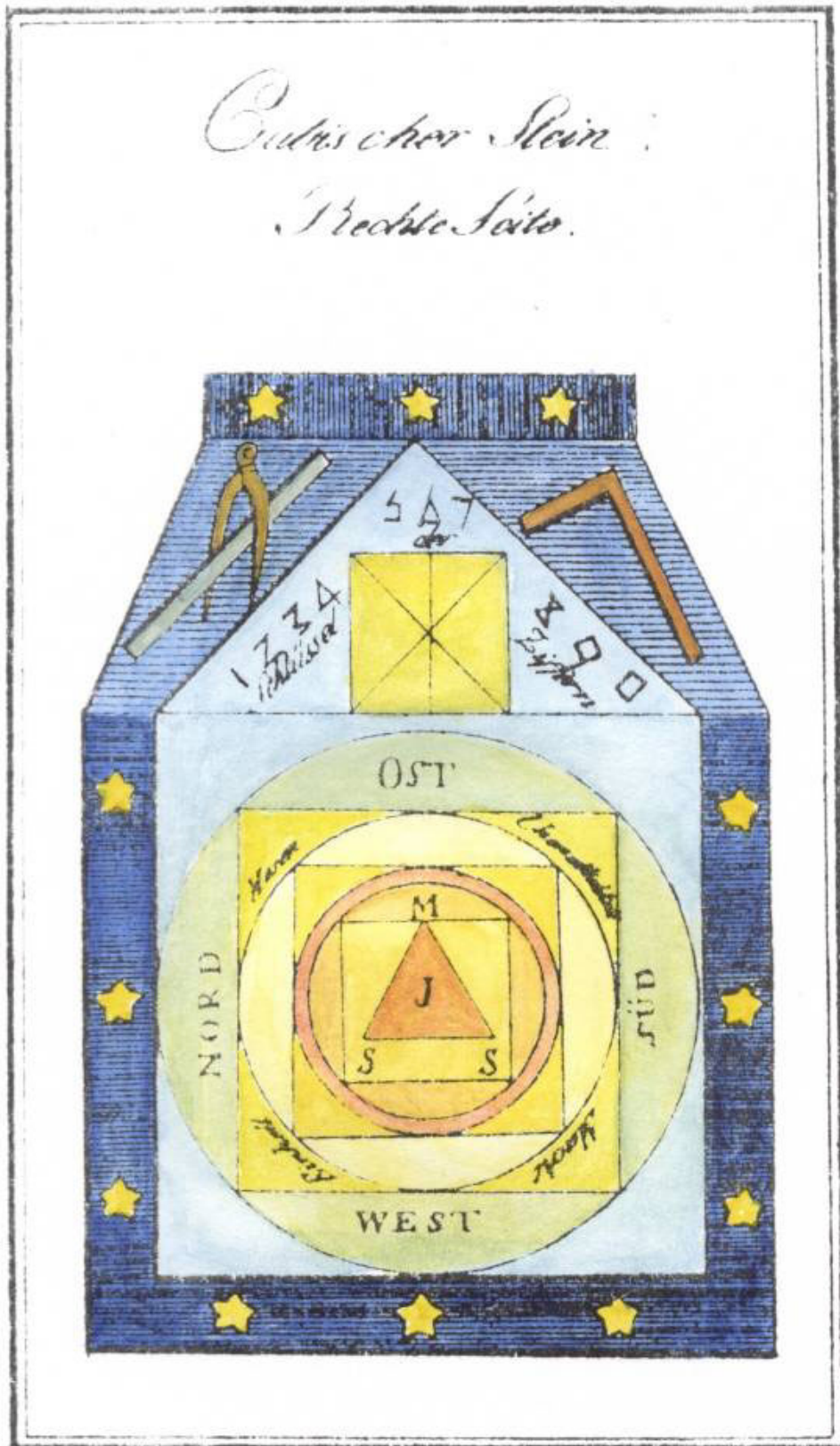
A240. Woodcut from Vannoccio Biringuccio *Pirotechnia* Venice, 1540.



A241. Engraving of cubic stone from *Maurisches Handbuch* Leipzig, 1829.



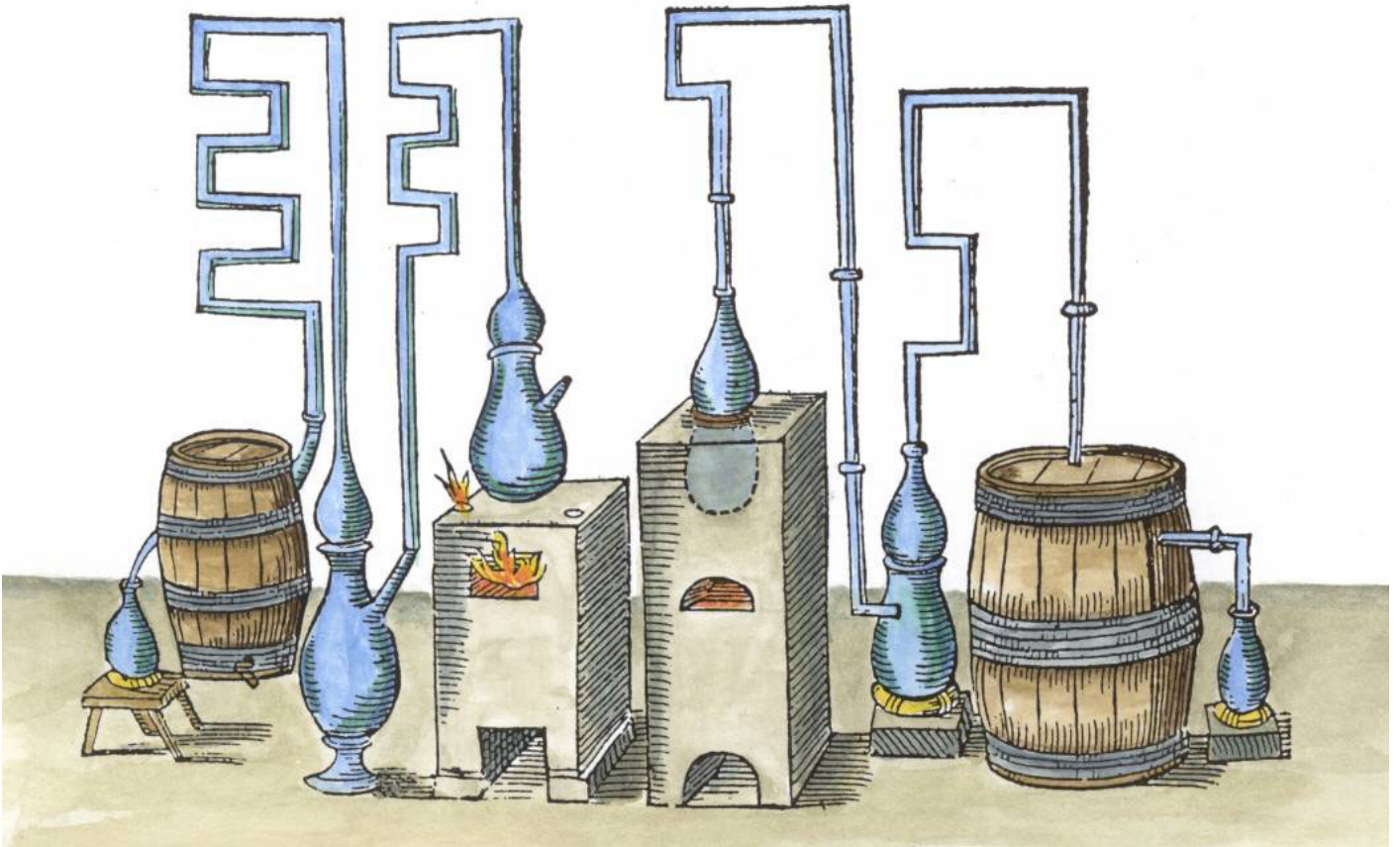
A242. Engraving of cubic stone from *Maurisches Handbuch* Leipzig, 1829.



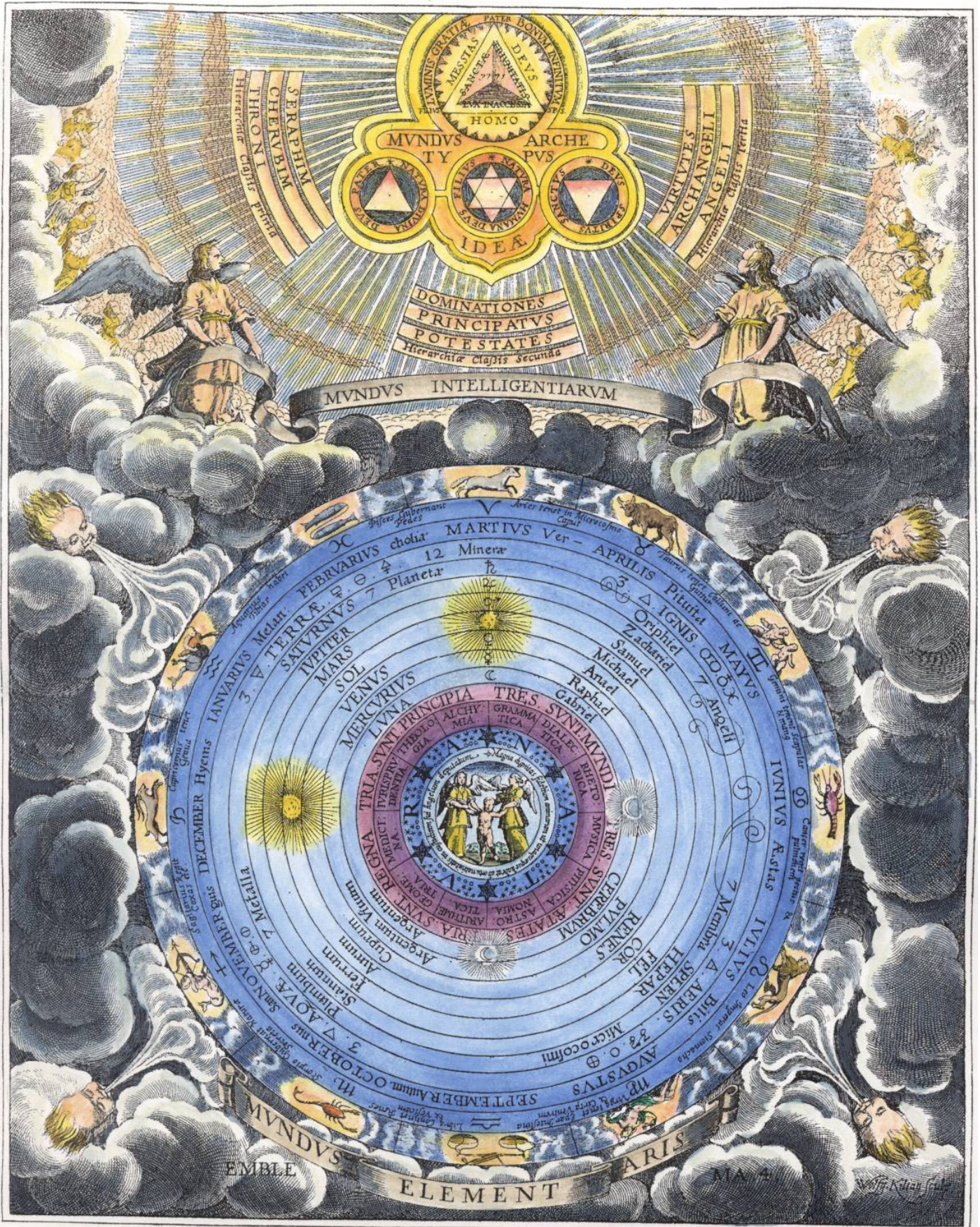
A243. Engraving from J.F. Henkel *Unterricht von der Mineralogie* Dresden, 1747.



A244. Woodcut from Libavius *Syntagma selectorum* Frankfurt, 1611.



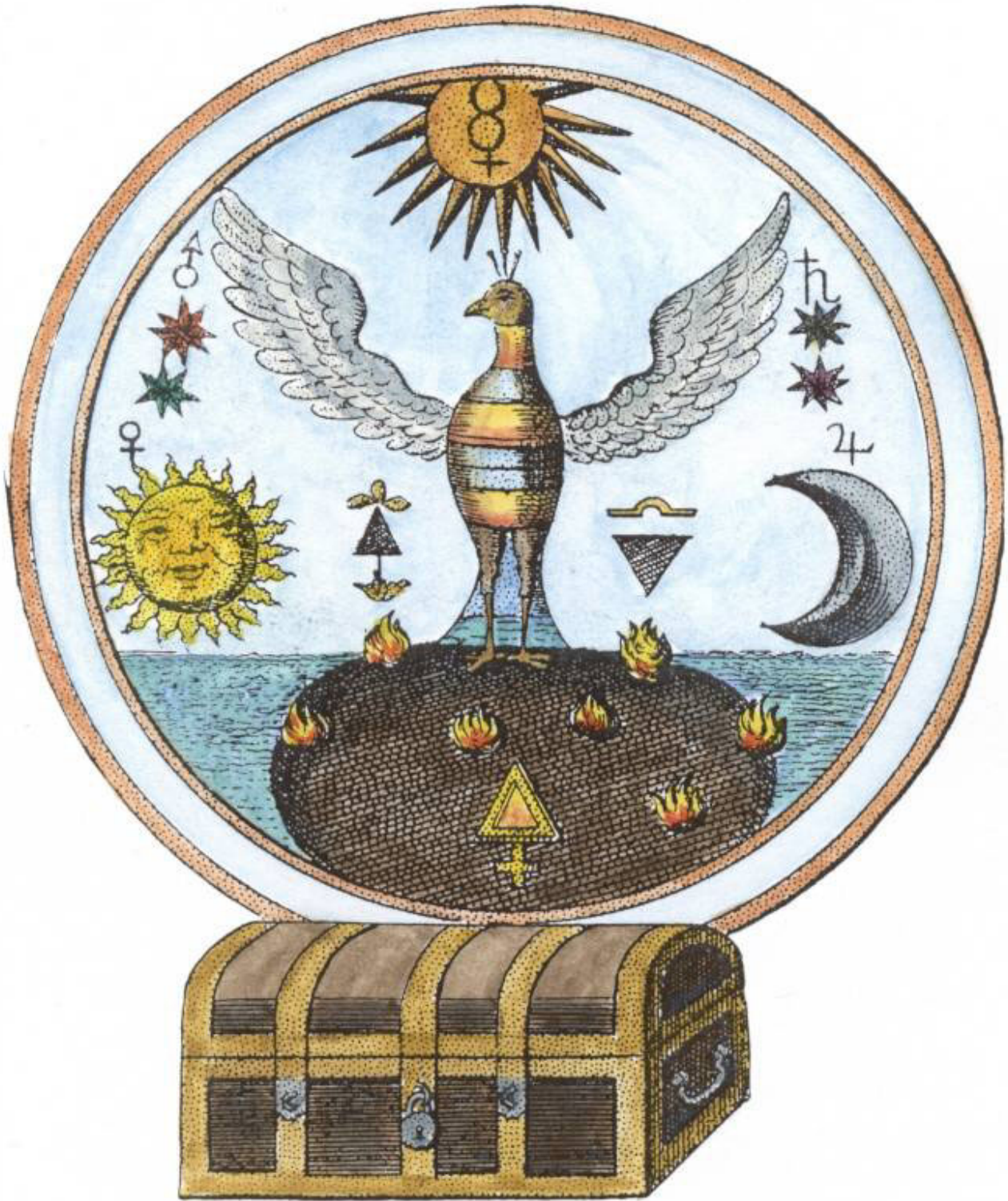
A245. Engraving from Malachias Geiger *Microcosmus hypochondriacus*, Munich, 1651.



A246. Engraving from Barchusen *Elementa chemiae* Leiden, 1718.



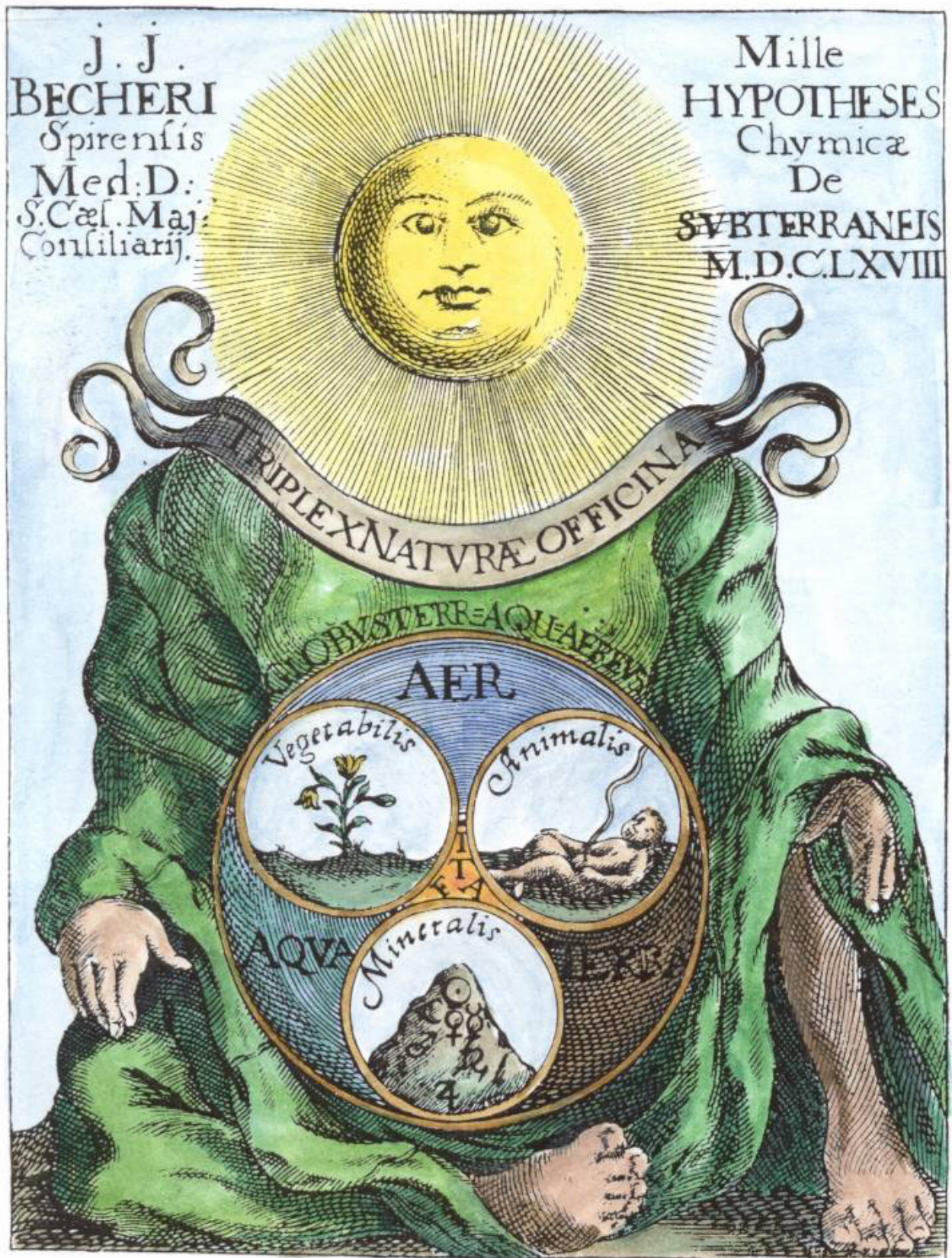
A247. Engraving from Barchusen *Elementa chemiae* Leiden, 1718.



A248. Engraving on title page of Basil Valentine *Revelation des mysteres* Paris, 1668



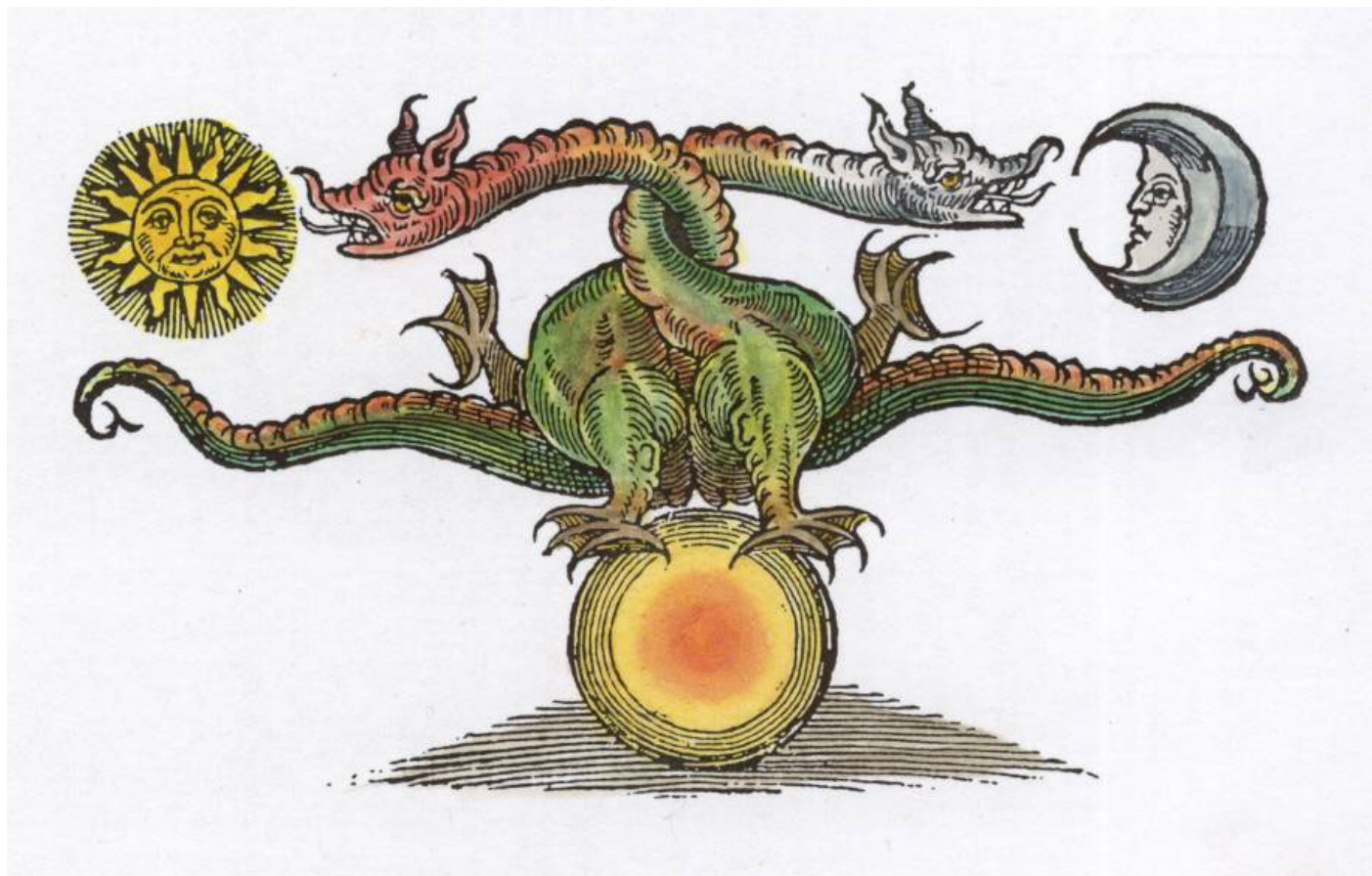
A249. Engraving from J.J. Becher *Actorum laboratorii chymici Monacensis* Frankfurt, 1669.



A250. Illustration from August Strindberg *Inferno* Berlin 1898



A251. Woodcut from Ashmole *Theatrum Chemicum Britaanicum*, London, 1652.



A252.



